



Full wwPDB X-ray Structure Validation Report ⓘ

Feb 1, 2016 – 12:22 AM GMT

PDB ID : 245D
Title : DNA-DRUG REFINEMENT: A COMPARISON OF THE PROGRAMS NUCLSQ, PROLSQ, SHELXL93 AND X-PLOR, USING THE LOW TEMPERATURE D(TGATCA)-NOGALAMYCIN STRUCTURE
Authors : Schuerman, G.S.; Smith, C.K.; Turkenburg, J.P.; Dettmar, A.N.; Van Meervelt, L.; Moore, M.H.
Deposited on : 1996-01-12
Resolution : 1.40 Å(reported)

This is a Full wwPDB X-ray Structure Validation Report for a publicly released PDB entry.
We welcome your comments at validation@mail.wwpdb.org
A user guide is available at
<http://wwpdb.org/validation/2016/XrayValidationReportHelp>
with specific help available everywhere you see the ⓘ symbol.

The following versions of software and data (see [references ⓘ](#)) were used in the production of this report:

MolProbity : 4.02b-467
Mogul : 1.7 (RC4), CSD as536be (2015)
Xtriage (Phenix) : **NOT EXECUTED**
EDS : **NOT EXECUTED**
Percentile statistics : 20151230.v01 (using entries in the PDB archive December 30th 2015)
Ideal geometry (proteins) : Engh & Huber (2001)
Ideal geometry (DNA, RNA) : Parkinson et al. (1996)
Validation Pipeline (wwPDB-VP) : trunk26865

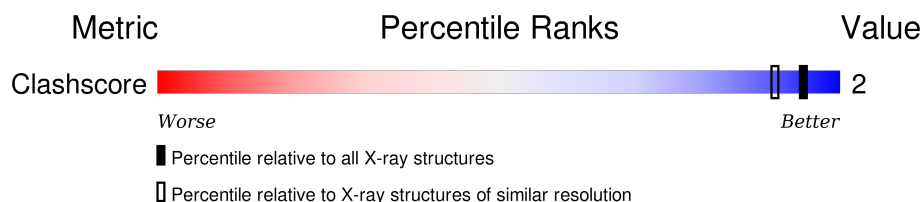
1 Overall quality at a glance

The following experimental techniques were used to determine the structure:

X-RAY DIFFRACTION

The reported resolution of this entry is 1.40 Å.

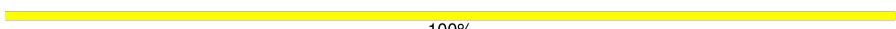

Percentile scores (ranging between 0-100) for global validation metrics of the entry are shown in the following graphic. The table shows the number of entries on which the scores are based.



Metric	Whole archive (#Entries)	Similar resolution (#Entries, resolution range(Å))
Clashscore	102246	1295 (1.40-1.40)

The table below summarises the geometric issues observed across the polymeric chains and their fit to the electron density. The red, orange, yellow and green segments on the lower bar indicate the fraction of residues that contain outliers for ≥ 3 , 2, 1 and 0 types of geometric quality criteria. A grey segment represents the fraction of residues that are not modelled. The numeric value for each fraction is indicated below the corresponding segment, with a dot representing fractions $\leq 5\%$. The upper red bar (where present) indicates the fraction of residues that have poor fit to the electron density. The numeric value is given above the bar.

Note EDS was not executed.

Mol	Chain	Length	Quality of chain
1	A	6	 100%
1	B	6	 83% 17%

2 Entry composition [i](#)

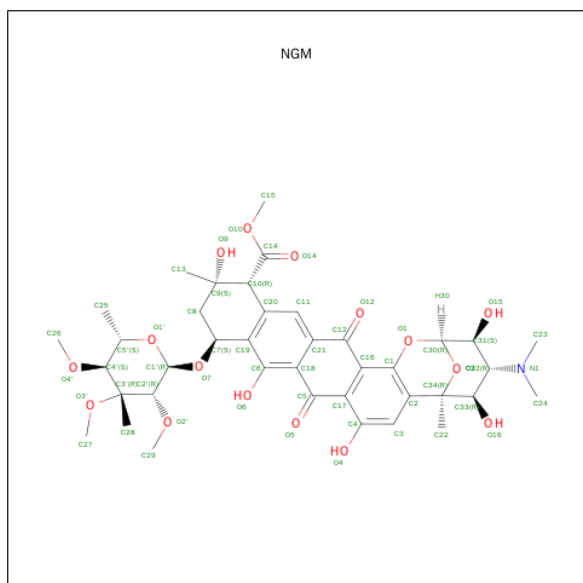
There are 3 unique types of molecules in this entry. The entry contains 421 atoms, of which 0 are hydrogens and 0 are deuteriums.

In the tables below, the ZeroOcc column contains the number of atoms modelled with zero occupancy, the AltConf column contains the number of residues with at least one atom in alternate conformation and the Trace column contains the number of residues modelled with at most 2 atoms.

- Molecule 1 is a DNA chain called DNA (5'-D(*TP*GP*AP*TP*CP*A)-3').

Mol	Chain	Residues	Atoms					ZeroOcc	AltConf	Trace
1	A	6	Total	C	N	O	P	0	0	0
			120	59	22	34	5			
1	B	6	Total	C	N	O	P	0	0	0
			120	59	22	34	5			

- Molecule 2 is NOGALAMYCIN (three-letter code: NGM) (formula: $C_{39}H_{49}NO_{16}$).



Mol	Chain	Residues	Atoms				ZeroOcc	AltConf
2	B	1	Total	C	N	O	0	0
			56	39	1	16		
2	A	1	Total	C	N	O	0	1
			59	40	1	18		

- Molecule 3 is water.

Mol	Chain	Residues	Atoms		ZeroOcc	AltConf
3	A	43	Total 43	O 43	0	0
3	B	23	Total 23	O 23	0	0

3 Residue-property plots

These plots are drawn for all protein, RNA and DNA chains in the entry. The first graphic for a chain summarises the proportions of errors displayed in the second graphic. The second graphic shows the sequence view annotated by issues in geometry and electron density. Residues are color-coded according to the number of geometric quality criteria for which they contain at least one outlier: green = 0, yellow = 1, orange = 2 and red = 3 or more. A red dot above a residue indicates a poor fit to the electron density ($RSRZ > 2$). Stretches of 2 or more consecutive residues without any outlier are shown as a green connector. Residues present in the sample, but not in the model, are shown in grey.


Note EDS was not executed.

- Molecule 1: DNA (5'-D(*TP*GP*AP*TP*CP*A)-3')

Chain A:  100%

T1	G2	A3	T4	C5	A6
----	----	----	----	----	----

- Molecule 1: DNA (5'-D(*TP*GP*AP*TP*CP*A)-3')

Chain B:  83% 17%

T7	G8	A9	T10	C11	A12
----	----	----	-----	-----	-----

4 Data and refinement statistics

Xtriage (Phenix) and EDS were not executed - this section will therefore be incomplete.

Property	Value	Source
Space group	P 41 21 2	Depositor
Cell constants a, b, c, α , β , γ	37.29Å 37.29Å 71.12Å 90.00° 90.00° 90.00°	Depositor
Resolution (Å)	8.00 – 1.40	Depositor
% Data completeness (in resolution range)	(Not available) (8.00-1.40)	Depositor
R_{merge}	0.04	Depositor
R_{sym}	(Not available)	Depositor
Refinement program	SHELXL-93	Depositor
R, R_{free}	0.160 , 0.252	Depositor
Estimated twinning fraction	No twinning to report.	Xtriage
Total number of atoms	421	wwPDB-VP
Average B, all atoms (Å ²)	19.0	wwPDB-VP

5 Model quality

5.1 Standard geometry

Bond lengths and bond angles in the following residue types are not validated in this section: NGM

The Z score for a bond length (or angle) is the number of standard deviations the observed value is removed from the expected value. A bond length (or angle) with $|Z| > 5$ is considered an outlier worth inspection. RMSZ is the root-mean-square of all Z scores of the bond lengths (or angles).

Mol	Chain	Bond lengths		Bond angles	
		RMSZ	$\# Z > 5$	RMSZ	$\# Z > 5$
1	A	2.41	5/134 (3.7%)	3.12	17/205 (8.3%)
1	B	2.64	12/134 (9.0%)	3.12	19/205 (9.3%)
All	All	2.53	17/268 (6.3%)	3.12	36/410 (8.8%)

All (17) bond length outliers are listed below:

Mol	Chain	Res	Type	Atoms	Z	Observed(Å)	Ideal(Å)
1	B	8	DG	C2'-C1'	8.84	1.61	1.52
1	A	2	DG	C2'-C1'	8.76	1.61	1.52
1	B	11	DC	C2'-C1'	6.88	1.59	1.52
1	A	5	DC	C2'-C1'	6.67	1.59	1.52
1	A	1	DT	C2'-C1'	6.17	1.58	1.52
1	B	7	DT	C5-C7	6.07	1.53	1.50
1	B	7	DT	C4'-C3'	-5.74	1.46	1.52
1	B	8	DG	C6-O6	5.67	1.29	1.24
1	B	12	DA	C2'-C1'	5.61	1.57	1.52
1	B	7	DT	C2'-C1'	5.59	1.57	1.52
1	B	8	DG	C4'-O4'	5.55	1.50	1.45
1	B	8	DG	C4'-C3'	-5.45	1.47	1.52
1	B	10	DT	P-O5'	5.40	1.65	1.59
1	A	4	DT	C4'-C3'	-5.23	1.47	1.52
1	B	10	DT	O3'-P	5.08	1.67	1.61
1	A	1	DT	C5-C7	5.06	1.53	1.50
1	B	9	DA	C2'-C1'	5.03	1.57	1.52

All (36) bond angle outliers are listed below:

Mol	Chain	Res	Type	Atoms	Z	Observed(°)	Ideal(°)
1	B	8	DG	O4'-C1'-N9	17.53	120.27	108.00
1	A	2	DG	O4'-C1'-N9	17.52	120.27	108.00

Continued on next page...

Continued from previous page...

Mol	Chain	Res	Type	Atoms	Z	Observed(°)	Ideal(°)
1	A	5	DC	O4'-C1'-N1	17.45	120.21	108.00
1	B	11	DC	O4'-C1'-N1	13.47	117.43	108.00
1	A	2	DG	P-O3'-C3'	12.93	135.22	119.70
1	B	10	DT	C2-N3-C4	10.08	133.25	127.20
1	B	9	DA	OP1-P-OP2	-8.16	107.35	119.60
1	A	2	DG	C4'-C3'-C2'	7.91	110.22	103.10
1	B	7	DT	C4'-C3'-C2'	7.18	109.56	103.10
1	A	4	DT	N3-C2-O2	-7.11	118.03	122.30
1	A	2	DG	C2-N3-C4	-6.90	108.45	111.90
1	A	1	DT	O4'-C4'-C3'	-6.52	101.89	104.50
1	B	10	DT	C4'-C3'-C2'	6.50	108.95	103.10
1	A	5	DC	C2-N3-C4	6.39	123.09	119.90
1	B	10	DT	N3-C4-C5	-6.25	111.45	115.20
1	A	1	DT	N1-C2-N3	-6.22	110.86	114.60
1	B	9	DA	C4'-C3'-C2'	6.06	108.55	103.10
1	B	10	DT	N1-C2-N3	-5.88	111.07	114.60
1	B	8	DG	C4'-C3'-C2'	5.82	108.33	103.10
1	B	8	DG	O4'-C1'-C2'	-5.81	101.25	105.90
1	B	12	DA	C5-C6-N6	-5.71	119.13	123.70
1	A	3	DA	C4'-C3'-C2'	5.61	108.15	103.10
1	A	6	DA	OP1-P-OP2	-5.58	111.23	119.60
1	B	8	DG	P-O5'-C5'	5.47	129.65	120.90
1	A	1	DT	C6-C5-C7	5.45	126.17	122.90
1	A	4	DT	C4'-C3'-C2'	5.44	108.00	103.10
1	A	5	DC	C4'-C3'-C2'	5.32	107.89	103.10
1	A	2	DG	C5-C6-O6	5.29	131.77	128.60
1	B	10	DT	N3-C4-O4	5.26	123.06	119.90
1	A	4	DT	O4'-C4'-C3'	-5.25	102.40	104.50
1	B	11	DC	C4'-C3'-C2'	5.24	107.82	103.10
1	A	2	DG	N3-C4-C5	5.18	131.19	128.60
1	B	12	DA	C5-C6-N1	5.15	120.28	117.70
1	B	7	DT	C6-C5-C7	-5.11	119.84	122.90
1	B	12	DA	C4'-C3'-C2'	5.08	107.67	103.10
1	B	8	DG	P-O3'-C3'	5.01	125.71	119.70

There are no chirality outliers.

There are no planarity outliers.

5.2 Too-close contacts ⓘ

In the following table, the Non-H and H(model) columns list the number of non-hydrogen atoms and hydrogen atoms in the chain respectively. The H(added) column lists the number of hydrogen

atoms added and optimized by MolProbity. The Clashes column lists the number of clashes within the asymmetric unit, whereas Symm-Clashes lists symmetry related clashes.

Mol	Chain	Non-H	H(model)	H(added)	Clashes	Symm-Clashes
1	A	120	0	70	0	0
1	B	120	0	70	1	0
2	A	59	0	6	0	0
2	B	56	0	49	1	0
3	A	43	0	0	0	0
3	B	23	0	0	0	0
All	All	421	0	195	1	0

The all-atom clashscore is defined as the number of clashes found per 1000 atoms (including hydrogen atoms). The all-atom clashscore for this structure is 2.

All (1) close contacts within the same asymmetric unit are listed below, sorted by their clash magnitude.

Atom-1	Atom-2	Interatomic distance (Å)	Clash overlap (Å)
1:B:8:DG:O6	2:B:13:NGM:H32	2.18	0.43

There are no symmetry-related clashes.

5.3 Torsion angles [i](#)

5.3.1 Protein backbone [i](#)

There are no protein molecules in this entry.

5.3.2 Protein sidechains [i](#)

There are no protein molecules in this entry.

5.3.3 RNA [i](#)

There are no RNA molecules in this entry.

5.4 Non-standard residues in protein, DNA, RNA chains [i](#)

There are no non-standard protein/DNA/RNA residues in this entry.

5.5 Carbohydrates [i](#)

There are no carbohydrates in this entry.

5.6 Ligand geometry [i](#)

3 ligands are modelled in this entry.

In the following table, the Counts columns list the number of bonds (or angles) for which Mogul statistics could be retrieved, the number of bonds (or angles) that are observed in the model and the number of bonds (or angles) that are defined in the chemical component dictionary. The Link column lists molecule types, if any, to which the group is linked. The Z score for a bond length (or angle) is the number of standard deviations the observed value is removed from the expected value. A bond length (or angle) with $|Z| > 2$ is considered an outlier worth inspection. RMSZ is the root-mean-square of all Z scores of the bond lengths (or angles).

Mol	Type	Chain	Res	Link	Bond lengths			Bond angles		
					Counts	RMSZ	$\# Z > 2$	Counts	RMSZ	$\# Z > 2$
2	NGM	A	14[A]	-	56,62,62	2.97	18 (32%)	70,101,101	2.48	16 (22%)
2	NGM	A	14[B]	-	56,62,62	2.96	18 (32%)	70,101,101	2.33	15 (21%)
2	NGM	B	13	-	56,62,62	1.58	11 (19%)	70,101,101	2.04	17 (24%)

In the following table, the Chirals column lists the number of chiral outliers, the number of chiral centers analysed, the number of these observed in the model and the number defined in the chemical component dictionary. Similar counts are reported in the Torsion and Rings columns. '-' means no outliers of that kind were identified.

Mol	Type	Chain	Res	Link	Chirals	Torsions	Rings
2	NGM	A	14[A]	-	-	0/21/113/113	0/1/7/7
2	NGM	A	14[B]	-	-	0/21/113/113	0/1/7/7
2	NGM	B	13	-	-	0/21/113/113	0/1/7/7

All (47) bond length outliers are listed below:

Mol	Chain	Res	Type	Atoms	Z	Observed(Å)	Ideal(Å)
2	A	14[A]	NGM	O10-C14	-6.20	1.17	1.33
2	A	14[B]	NGM	O10-C14	-5.97	1.17	1.33
2	B	13	NGM	C22-C34	-2.92	1.46	1.52
2	B	13	NGM	O10-C14	-2.62	1.26	1.33
2	B	13	NGM	C25-C5'	-2.20	1.46	1.51
2	A	14[A]	NGM	C31-C32	-2.03	1.50	1.53
2	A	14[B]	NGM	C31-C32	-2.03	1.50	1.53
2	A	14[A]	NGM	O4-C4	2.04	1.40	1.36
2	A	14[B]	NGM	O4-C4	2.04	1.40	1.36

Continued on next page...

Continued from previous page...

Mol	Chain	Res	Type	Atoms	Z	Observed(Å)	Ideal(Å)
2	A	14[A]	NGM	O7-C1'	2.07	1.47	1.41
2	A	14[B]	NGM	O7-C1'	2.07	1.47	1.41
2	A	14[A]	NGM	O2'-C2'	2.24	1.46	1.42
2	A	14[B]	NGM	O2'-C2'	2.24	1.46	1.42
2	B	13	NGM	O12-C12	2.33	1.27	1.22
2	B	13	NGM	O4-C4	2.36	1.41	1.36
2	A	14[A]	NGM	C3-C4	2.38	1.42	1.38
2	A	14[B]	NGM	C3-C4	2.38	1.42	1.38
2	B	13	NGM	C3-C4	2.41	1.42	1.38
2	B	13	NGM	C8-C7	2.87	1.58	1.52
2	B	13	NGM	C8-C9	3.23	1.60	1.53
2	B	13	NGM	O5-C5	3.37	1.28	1.22
2	A	14[A]	NGM	O3'-C27	3.66	1.54	1.43
2	A	14[B]	NGM	O3'-C27	3.66	1.54	1.43
2	A	14[A]	NGM	O2'-C29	3.87	1.56	1.42
2	A	14[B]	NGM	O2'-C29	3.87	1.56	1.42
2	A	14[A]	NGM	O4'-C26	3.96	1.57	1.42
2	A	14[B]	NGM	O4'-C26	3.96	1.57	1.42
2	B	13	NGM	C19-C7	4.19	1.59	1.51
2	A	14[A]	NGM	C28-C3'	4.35	1.64	1.51
2	A	14[B]	NGM	C28-C3'	4.35	1.64	1.51
2	A	14[B]	NGM	O10-C15	4.72	1.56	1.45
2	A	14[A]	NGM	O10-C15	4.73	1.56	1.45
2	A	14[A]	NGM	C22-C34	5.04	1.62	1.52
2	A	14[B]	NGM	C22-C34	5.04	1.62	1.52
2	A	14[A]	NGM	C25-C5'	5.12	1.64	1.51
2	A	14[B]	NGM	C25-C5'	5.12	1.64	1.51
2	B	13	NGM	C20-C10	5.27	1.60	1.51
2	A	14[A]	NGM	C13-C9	6.00	1.63	1.52
2	A	14[B]	NGM	C13-C9	6.00	1.63	1.52
2	A	14[B]	NGM	O14-C14	6.26	1.37	1.21
2	A	14[A]	NGM	O14-C14	6.28	1.37	1.21
2	A	14[A]	NGM	O5-C5	6.81	1.35	1.22
2	A	14[B]	NGM	O5-C5	6.81	1.35	1.22
2	A	14[A]	NGM	O12-C12	7.79	1.36	1.22
2	A	14[B]	NGM	O12-C12	7.79	1.36	1.22
2	A	14[A]	NGM	C32-N1	8.03	1.66	1.48
2	A	14[B]	NGM	C32-N1	8.03	1.66	1.48

All (48) bond angle outliers are listed below:

Continued on next page...

Continued from previous page...

Mol	Chain	Res	Type	Atoms	Z	Observed(°)	Ideal(°)
2	A	14[A]	NGM	O14-C14-C10	-10.53	107.25	124.82
2	A	14[B]	NGM	O14-C14-C10	-9.10	109.63	124.82
2	B	13	NGM	C31-C32-C33	-8.20	98.52	110.46
2	B	13	NGM	O14-C14-C10	-4.68	117.01	124.82
2	B	13	NGM	O2-C30-C31	-4.61	100.98	110.62
2	A	14[A]	NGM	O12-C12-C21	-4.04	114.95	120.89
2	A	14[B]	NGM	O12-C12-C21	-4.04	114.95	120.89
2	A	14[A]	NGM	C30-C31-C32	-2.78	104.41	109.31
2	A	14[B]	NGM	C30-C31-C32	-2.78	104.41	109.31
2	B	13	NGM	C26-O4'-C4'	-2.61	109.40	114.39
2	B	13	NGM	C3-C2-C34	-2.52	117.16	121.21
2	B	13	NGM	O12-C12-C21	-2.37	117.41	120.89
2	A	14[A]	NGM	C13-C9-C8	-2.16	106.17	110.57
2	A	14[B]	NGM	C13-C9-C8	-2.16	106.17	110.57
2	B	13	NGM	O15-C31-C30	-2.01	105.60	110.02
2	A	14[A]	NGM	C21-C12-C16	2.00	121.41	117.99
2	A	14[B]	NGM	C21-C12-C16	2.00	121.41	117.99
2	A	14[A]	NGM	C1'-O1'-C5'	2.00	117.06	113.64
2	A	14[B]	NGM	C1'-O1'-C5'	2.00	117.06	113.64
2	A	14[A]	NGM	C18-C5-C17	2.09	121.91	118.09
2	A	14[B]	NGM	C18-C5-C17	2.09	121.91	118.09
2	B	13	NGM	C1-O1-C30	2.09	122.18	115.94
2	A	14[A]	NGM	O10-C14-O14	2.13	128.20	123.79
2	A	14[A]	NGM	O9-C9-C8	2.15	113.20	107.99
2	A	14[B]	NGM	O9-C9-C8	2.15	113.20	107.99
2	A	14[A]	NGM	O15-C31-C32	2.20	114.95	108.81
2	A	14[B]	NGM	O15-C31-C32	2.20	114.95	108.81
2	A	14[A]	NGM	C3-C2-C1	2.21	120.21	117.02
2	A	14[B]	NGM	C3-C2-C1	2.21	120.21	117.02
2	B	13	NGM	C3-C2-C1	2.27	120.31	117.02
2	B	13	NGM	C22-C34-C2	2.49	116.17	111.60
2	B	13	NGM	O1'-C5'-C25	2.50	112.10	106.64
2	A	14[A]	NGM	O7-C1'-C2'	2.73	114.67	109.05
2	A	14[B]	NGM	O7-C1'-C2'	2.73	114.67	109.05
2	B	13	NGM	O7-C1'-C2'	2.74	114.68	109.05
2	B	13	NGM	O1-C1-C16	2.74	121.50	116.40
2	B	13	NGM	O10-C14-O14	2.77	129.50	123.79
2	B	13	NGM	C1'-O7-C7	2.95	120.72	114.91
2	A	14[A]	NGM	O1'-C5'-C25	4.70	116.91	106.64
2	A	14[B]	NGM	O1'-C5'-C25	4.70	116.91	106.64
2	B	13	NGM	C30-C31-C32	5.08	118.25	109.31

Continued on next page...

Continued from previous page...

Mol	Chain	Res	Type	Atoms	Z	Observed(°)	Ideal(°)
2	B	13	NGM	C15-O10-C14	5.80	129.59	115.99
2	A	14[B]	NGM	O10-C14-C10	6.58	122.41	111.17
2	A	14[A]	NGM	C31-C32-C33	6.66	120.16	110.46
2	A	14[B]	NGM	C31-C32-C33	6.66	120.16	110.46
2	A	14[A]	NGM	O10-C14-C10	7.01	123.15	111.17
2	A	14[B]	NGM	C15-O10-C14	8.07	134.92	115.99
2	A	14[A]	NGM	C15-O10-C14	8.84	136.73	115.99

There are no chirality outliers.

There are no torsion outliers.

There are no ring outliers.

1 monomer is involved in 1 short contact:

Mol	Chain	Res	Type	Clashes	Symm-Clashes
2	B	13	NGM	1	0

5.7 Other polymers [i](#)

There are no such residues in this entry.

5.8 Polymer linkage issues [i](#)

There are no chain breaks in this entry.

6 Fit of model and data [i](#)

6.1 Protein, DNA and RNA chains [i](#)

EDS was not executed - this section will therefore be empty.

6.2 Non-standard residues in protein, DNA, RNA chains [i](#)

EDS was not executed - this section will therefore be empty.

6.3 Carbohydrates [i](#)

EDS was not executed - this section will therefore be empty.

6.4 Ligands [i](#)

EDS was not executed - this section will therefore be empty.

6.5 Other polymers [i](#)

EDS was not executed - this section will therefore be empty.