



# Full wwPDB X-ray Structure Validation Report ⓘ

Feb 1, 2016 – 07:14 AM GMT

PDB ID : 3A1J  
Title : Crystal structure of the human Rad9-Hus1-Rad1 complex  
Authors : Sohn, S.Y.; Cho, Y.  
Deposited on : 2009-04-08  
Resolution : 2.50 Å(reported)

This is a Full wwPDB X-ray Structure Validation Report for a publicly released PDB entry.  
We welcome your comments at [validation@mail.wwpdb.org](mailto:validation@mail.wwpdb.org)  
A user guide is available at  
<http://wwpdb.org/validation/2016/XrayValidationReportHelp>  
with specific help available everywhere you see the ⓘ symbol.

---

The following versions of software and data (see [references ⓘ](#)) were used in the production of this report:

MolProbity : 4.02b-467  
Mogul : 1.7 (RC4), CSD as536be (2015)  
Xtriage (Phenix) : 1.9-1692  
EDS : rb-20026688  
Percentile statistics : 20151230.v01 (using entries in the PDB archive December 30th 2015)  
Refmac : 5.8.0135  
CCP4 : 6.5.0  
Ideal geometry (proteins) : Engh & Huber (2001)  
Ideal geometry (DNA, RNA) : Parkinson et al. (1996)  
Validation Pipeline (wwPDB-VP) : trunk26865

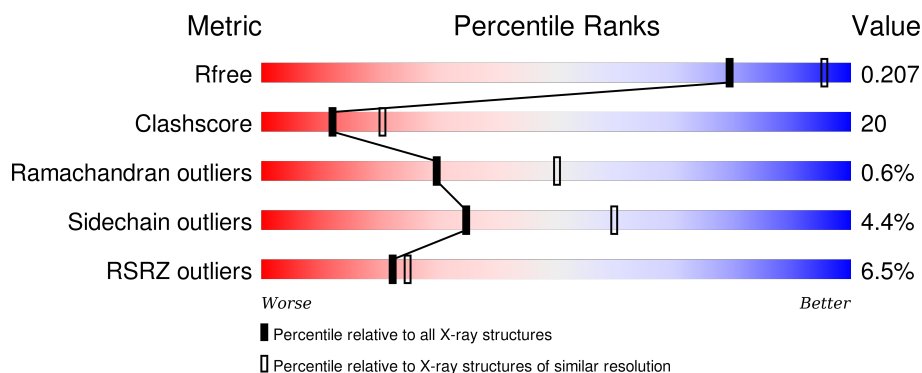
# 1 Overall quality at a glance ⓘ

The following experimental techniques were used to determine the structure:

## *X-RAY DIFFRACTION*

The reported resolution of this entry is 2.50 Å.

Percentile scores (ranging between 0-100) for global validation metrics of the entry are shown in the following graphic. The table shows the number of entries on which the scores are based.



Metric	Whole archive (#Entries)	Similar resolution (#Entries, resolution range(Å))
$R_{free}$	91344	3553 (2.50-2.50)
Clashscore	102246	4242 (2.50-2.50)
Ramachandran outliers	100387	4156 (2.50-2.50)
Sidechain outliers	100360	4158 (2.50-2.50)
RSRZ outliers	91569	3562 (2.50-2.50)

The table below summarises the geometric issues observed across the polymeric chains and their fit to the electron density. The red, orange, yellow and green segments on the lower bar indicate the fraction of residues that contain outliers for  $\geq 3$ , 2, 1 and 0 types of geometric quality criteria. A grey segment represents the fraction of residues that are not modelled. The numeric value for each fraction is indicated below the corresponding segment, with a dot representing fractions  $\leq 5\%$ . The upper red bar (where present) indicates the fraction of residues that have poor fit to the electron density. The numeric value is given above the bar.

Mol	Chain	Length	Quality of chain
1	A	266	<div> <div>5%</div> <div>67%</div> <div>30%</div> <div>.</div> </div>
2	B	281	<div> <div>6%</div> <div>57%</div> <div>36%</div> <div>.</div> <div>.</div> </div>
3	C	263	<div> <div>7%</div> <div>64%</div> <div>34%</div> <div>.</div> </div>

The following table lists non-polymeric compounds, carbohydrate monomers and non-standard residues in protein, DNA, RNA chains that are outliers for geometric or electron-density-fit criteria:

Mol	Type	Chain	Res	Chirality	Geometry	Clashes	Electron density
4	SUC	A	6001	-	-	-	X

## 2 Entry composition

There are 5 unique types of molecules in this entry. The entry contains 6467 atoms, of which 0 are hydrogens and 0 are deuteriums.

In the tables below, the ZeroOcc column contains the number of atoms modelled with zero occupancy, the AltConf column contains the number of residues with at least one atom in alternate conformation and the Trace column contains the number of residues modelled with at most 2 atoms.

- Molecule 1 is a protein called Cell cycle checkpoint control protein RAD9A.

Mol	Chain	Residues	Atoms						ZeroOcc	AltConf	Trace
1	A	265	Total	C	N	O	S	Se	0	0	0
			2044	1299	356	373	10	6			

- Molecule 2 is a protein called Checkpoint protein HUS1.

Mol	Chain	Residues	Atoms						ZeroOcc	AltConf	Trace
2	B	269	Total	C	N	O	S	Se	0	0	0
			2138	1366	364	392	7	9			

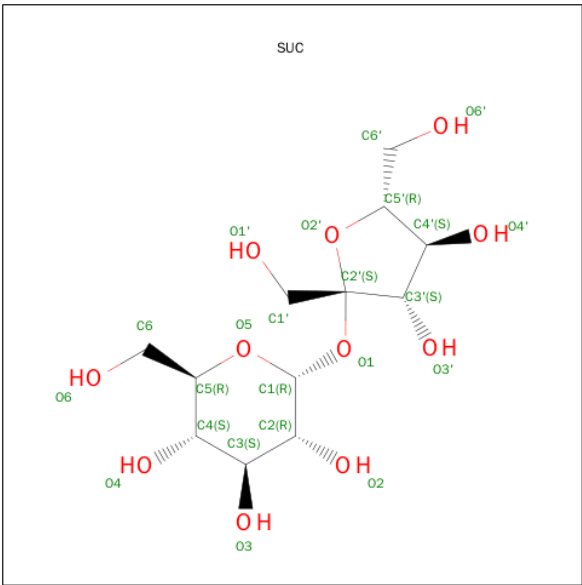
There is a discrepancy between the modelled and reference sequences:

Chain	Residue	Modelled	Actual	Comment	Reference
B	0	HIS	-	EXPRESSION TAG	UNP O60921

- Molecule 3 is a protein called Cell cycle checkpoint protein RAD1.

Mol	Chain	Residues	Atoms						ZeroOcc	AltConf	Trace
3	C	263	Total	C	N	O	S	Se	0	0	0
			2076	1315	341	402	11	7			

- Molecule 4 is SUGAR (SUCROSE) (three-letter code: SUC) (formula: C<sub>12</sub>H<sub>22</sub>O<sub>11</sub>).



Mol	Chain	Residues	Atoms			ZeroOcc	AltConf
4	A	1	Total	C	O	0	0
			23	12	11		

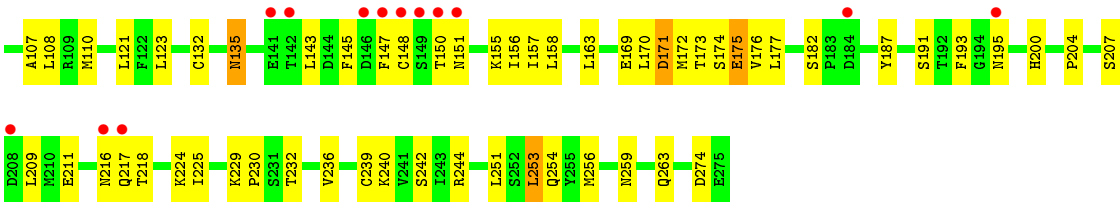
- Molecule 5 is water.

Mol	Chain	Residues	Atoms		ZeroOcc	AltConf
5	A	64	Total	O	0	0
			64	64		
5	B	54	Total	O	0	0
			54	54		
5	C	68	Total	O	0	0
			68	68		



- Molecule 1: Cell cycle checkpoint control protein RAD9A





## 4 Data and refinement statistics

Property	Value	Source
Space group	P 1 21 1	Depositor
Cell constants a, b, c, $\alpha$ , $\beta$ , $\gamma$	77.15Å 70.78Å 86.66Å 90.00° 99.20° 90.00°	Depositor
Resolution (Å)	19.90 – 2.50 19.90 – 2.50	Depositor EDS
% Data completeness (in resolution range)	96.2 (19.90-2.50) 95.2 (19.90-2.50)	Depositor EDS
$R_{merge}$	(Not available)	Depositor
$R_{sym}$	0.09	Depositor
$\langle I/\sigma(I) \rangle$ <sup>1</sup>	9.16 (at 2.50Å)	Xtriage
Refinement program	CNS 1.1	Depositor
R, $R_{free}$	0.209 , 0.282 0.207 , 0.207	Depositor DCC
$R_{free}$ test set	1555 reflections (5.09%)	DCC
Wilson B-factor (Å <sup>2</sup> )	43.3	Xtriage
Anisotropy	0.134	Xtriage
Bulk solvent $k_{sol}$ (e/Å <sup>3</sup> ), $B_{sol}$ (Å <sup>2</sup> )	0.34 , 48.7	EDS
Estimated twinning fraction	No twinning to report.	Xtriage
L-test for twinning <sup>2</sup>	$\langle  L  \rangle = 0.48$ , $\langle L^2 \rangle = 0.31$	Xtriage
Outliers	0 of 30524 reflections	Xtriage
$F_o, F_c$ correlation	0.94	EDS
Total number of atoms	6467	wwPDB-VP
Average B, all atoms (Å <sup>2</sup> )	45.0	wwPDB-VP

Xtriage's analysis on translational NCS is as follows: *The largest off-origin peak in the Patterson function is 5.16% of the height of the origin peak. No significant pseudotranslation is detected.*

<sup>1</sup>Intensities estimated from amplitudes.

<sup>2</sup>Theoretical values of  $\langle |L| \rangle$ ,  $\langle L^2 \rangle$  for acentric reflections are 0.5, 0.375 respectively for untwinned datasets, and 0.333, 0.2 for perfectly twinned datasets.



## 5 Model quality [i](#)

### 5.1 Standard geometry [i](#)

Bond lengths and bond angles in the following residue types are not validated in this section: SUC

The Z score for a bond length (or angle) is the number of standard deviations the observed value is removed from the expected value. A bond length (or angle) with  $|Z| > 5$  is considered an outlier worth inspection. RMSZ is the root-mean-square of all Z scores of the bond lengths (or angles).

Mol	Chain	Bond lengths		Bond angles	
		RMSZ	$\# Z  > 5$	RMSZ	$\# Z  > 5$
1	A	0.38	0/2075	0.65	0/2788
2	B	0.36	0/2166	0.63	1/2912 (0.0%)
3	C	0.38	0/2107	0.62	0/2837
All	All	0.37	0/6348	0.64	1/8537 (0.0%)

There are no bond length outliers.

All (1) bond angle outliers are listed below:

Mol	Chain	Res	Type	Atoms	Z	Observed( $^{\circ}$ )	Ideal( $^{\circ}$ )
2	B	113	LEU	N-CA-C	-5.74	95.51	111.00

There are no chirality outliers.

There are no planarity outliers.

### 5.2 Too-close contacts [i](#)

In the following table, the Non-H and H(model) columns list the number of non-hydrogen atoms and hydrogen atoms in the chain respectively. The H(added) column lists the number of hydrogen atoms added and optimized by MolProbity. The Clashes column lists the number of clashes within the asymmetric unit, whereas Symm-Clashes lists symmetry related clashes.

Mol	Chain	Non-H	H(model)	H(added)	Clashes	Symm-Clashes
1	A	2044	0	2079	80	0
2	B	2138	0	2205	100	0
3	C	2076	0	2050	80	0
4	A	23	0	22	1	0
5	A	64	0	0	7	0
5	B	54	0	0	1	0
5	C	68	0	0	4	0

*Continued on next page...*

*Continued from previous page...*

Mol	Chain	Non-H	H(model)	H(added)	Clashes	Symm-Clashes
All	All	6467	0	6356	251	0

The all-atom clashscore is defined as the number of clashes found per 1000 atoms (including hydrogen atoms). The all-atom clashscore for this structure is 20.

All (251) close contacts within the same asymmetric unit are listed below, sorted by their clash magnitude.

Atom-1	Atom-2	Interatomic distance (Å)	Clash overlap (Å)
2:B:169:VAL:HG12	2:B:173:MSE:HE2	1.39	1.05
1:A:197:MSE:HE2	1:A:198:CYS:N	1.82	0.95
2:B:13:LEU:HD21	2:B:95:ALA:HB1	1.56	0.88
3:C:177:LEU:HB2	3:C:225:ILE:HD13	1.52	0.88
3:C:173:THR:HG21	3:C:195:ASN:H	1.39	0.87
1:A:6:THR:HG22	1:A:96:LYS:HG2	1.55	0.87
2:B:81:LEU:HD23	2:B:135:ILE:HD13	1.54	0.86
3:C:239:CYS:SG	3:C:256:MSE:HE2	2.18	0.83
1:A:107:ARG:HD3	1:A:123:ASN:HB3	1.59	0.82
2:B:43:LEU:HD13	2:B:45:ASP:H	1.43	0.82
1:A:197:MSE:HE3	2:B:128:ILE:O	1.79	0.82
1:A:197:MSE:HE2	1:A:198:CYS:H	1.46	0.81
2:B:43:LEU:HD11	2:B:45:ASP:HB3	1.65	0.79
3:C:172:MSE:HE2	3:C:229:LYS:HD2	1.62	0.79
2:B:76:ASN:HD22	2:B:140:ARG:NH1	1.80	0.79
1:A:11:LYS:HE2	1:A:15:LYS:HE2	1.64	0.79
2:B:13:LEU:CD2	2:B:95:ALA:HB1	2.15	0.76
1:A:26:GLU:HG2	1:A:74:LYS:HE3	1.68	0.75
1:A:7:GLY:O	1:A:10:VAL:HG12	1.85	0.75
3:C:171:ASP:OD1	3:C:173:THR:HB	1.88	0.74
2:B:69:MSE:HE1	2:B:77:ASN:ND2	2.02	0.74
3:C:45:THR:HG22	3:C:47:ASN:H	1.51	0.74
2:B:247:ASN:HD22	2:B:248:PRO:HD2	1.52	0.73
3:C:31:LEU:HD21	3:C:51:VAL:HG21	1.69	0.73
3:C:66:GLN:HG2	3:C:69:ILE:HG12	1.72	0.72
3:C:148:CYS:HB2	3:C:151:ASN:ND2	2.04	0.71
2:B:55:TRP:CD2	2:B:148:GLU:HB3	2.26	0.71
2:B:174:LYS:HD2	2:B:238:LEU:HD12	1.73	0.69
1:A:170:ILE:HG12	1:A:209:ALA:HB3	1.75	0.68
2:B:46:LYS:HA	2:B:51:GLY:HA2	1.75	0.68
1:A:193:MSE:CE	2:B:90:ARG:CZ	2.71	0.68
2:B:166:MSE:O	2:B:170:VAL:HG13	1.93	0.68
4:A:6001:SUC:H1	4:A:6001:SUC:O1'	1.94	0.67

*Continued on next page...*

*Continued from previous page...*

Atom-1	Atom-2	Interatomic distance (Å)	Clash overlap (Å)
2:B:256:VAL:HG12	2:B:259:LYS:HB2	1.76	0.67
2:B:60:GLN:HG3	2:B:67:PHE:CG	2.31	0.65
1:A:146:ARG:HE	1:A:205:GLN:NE2	1.94	0.65
3:C:173:THR:CG2	3:C:195:ASN:H	2.09	0.65
2:B:84:THR:O	2:B:87:ASN:HB2	1.97	0.65
2:B:170:VAL:HA	2:B:173:MSE:HE3	1.80	0.64
2:B:75:GLU:HG3	2:B:76:ASN:N	2.12	0.64
2:B:60:GLN:HG3	2:B:67:PHE:CD2	2.33	0.64
2:B:248:PRO:HG2	2:B:251:ALA:HB2	1.81	0.63
3:C:224:LYS:HE3	3:C:274:ASP:OD1	1.99	0.63
1:A:89:MSE:HE3	3:C:169:GLU:HG3	1.82	0.62
1:A:182:HIS:HD2	5:A:275:HOH:O	1.82	0.62
1:A:138:PRO:HG3	1:A:248:ILE:HD13	1.83	0.61
3:C:155:LYS:NZ	3:C:157:ILE:HD11	2.16	0.61
2:B:254:ASN:HD22	2:B:262:HIS:CD2	2.18	0.61
1:A:150:ARG:HG2	5:A:287:HOH:O	2.00	0.61
3:C:44:ALA:HB3	3:C:80:VAL:CG1	2.31	0.61
2:B:32:LEU:HD11	2:B:39:LEU:HG	1.82	0.60
1:A:83:VAL:HG11	1:A:110:VAL:HG11	1.82	0.60
1:A:259:HIS:HB2	5:A:278:HOH:O	2.00	0.60
3:C:29:THR:HB	5:C:294:HOH:O	2.02	0.60
1:A:184:GLU:HG2	1:A:186:ALA:HB3	1.84	0.59
3:C:24:VAL:HG11	3:C:123:LEU:HD23	1.84	0.59
1:A:197:MSE:CE	2:B:128:ILE:O	2.51	0.59
2:B:31:THR:HG21	2:B:146:LEU:HD13	1.85	0.59
2:B:254:ASN:HD22	2:B:262:HIS:HD2	1.51	0.58
3:C:155:LYS:HZ1	3:C:157:ILE:HD11	1.68	0.58
3:C:65:ILE:N	3:C:65:ILE:HD12	2.19	0.58
3:C:45:THR:CG2	3:C:47:ASN:H	2.14	0.57
1:A:197:MSE:HE3	2:B:128:ILE:C	2.23	0.57
2:B:154:PRO:HB3	2:B:254:ASN:HB3	1.85	0.57
2:B:69:MSE:HE1	2:B:77:ASN:HD21	1.68	0.57
2:B:224:VAL:HG12	2:B:225:GLU:N	2.20	0.57
2:B:174:LYS:HE3	2:B:235:ARG:HG2	1.85	0.57
1:A:116:PHE:CD2	3:C:209:LEU:HD11	2.40	0.56
3:C:158:LEU:HB3	3:C:163:LEU:HD11	1.86	0.56
2:B:75:GLU:HG3	2:B:76:ASN:H	1.70	0.56
1:A:144:MSE:HA	1:A:238:ILE:O	2.05	0.56
3:C:211:GLU:OE1	3:C:240:LYS:HE2	2.06	0.56
3:C:45:THR:HG23	3:C:46:LYS:N	2.21	0.56
1:A:68:GLN:C	1:A:68:GLN:HE21	2.08	0.56

*Continued on next page...*

*Continued from previous page...*

Atom-1	Atom-2	Interatomic distance (Å)	Clash overlap (Å)
1:A:42:ASN:HB2	1:A:47:ALA:H	1.71	0.55
3:C:99:SER:N	3:C:100:PRO:HD3	2.21	0.55
2:B:24:ALA:HA	2:B:85:SER:HB3	1.87	0.55
3:C:40:ALA:HB2	3:C:53:VAL:HG12	1.89	0.55
2:B:185:ASN:ND2	2:B:227:MSE:HE3	2.22	0.55
2:B:160:LEU:HD21	2:B:253:CYS:HB2	1.89	0.54
1:A:145:LEU:CD2	1:A:207:LEU:HG	2.37	0.54
1:A:174:ARG:NH2	1:A:207:LEU:O	2.41	0.54
2:B:81:LEU:CD2	2:B:135:ILE:HD13	2.35	0.53
1:A:26:GLU:HG2	1:A:74:LYS:CE	2.36	0.53
1:A:1:MSE:N	1:A:65:THR:HB	2.24	0.53
2:B:260:MSE:HG3	2:B:276:ILE:O	2.09	0.53
3:C:19:ALA:HA	3:C:72:GLU:O	2.09	0.52
2:B:52:VAL:HG23	2:B:275:PHE:O	2.09	0.52
3:C:135:ASN:N	3:C:135:ASN:HD22	2.07	0.52
3:C:216:ASN:HB2	5:C:322:HOH:O	2.08	0.52
2:B:8:VAL:HG22	2:B:8:VAL:O	2.10	0.52
2:B:160:LEU:CD2	2:B:253:CYS:HB2	2.40	0.52
3:C:110:MSE:HG2	3:C:121:LEU:CD2	2.40	0.52
2:B:160:LEU:HD11	2:B:263:PHE:HD1	1.75	0.52
2:B:250:LYS:HE3	2:B:252:LEU:HD12	1.92	0.52
2:B:59:GLU:HB2	2:B:62:ASN:ND2	2.25	0.52
1:A:256:LEU:HD12	1:A:256:LEU:C	2.30	0.52
1:A:193:MSE:HE1	2:B:90:ARG:CZ	2.38	0.51
2:B:161:PRO:HB3	2:B:208:LEU:HD21	1.91	0.51
1:A:1:MSE:N	1:A:65:THR:HG22	2.25	0.51
2:B:99:ARG:HD3	2:B:118:GLU:OE2	2.11	0.51
1:A:174:ARG:HD3	1:A:201:GLU:CD	2.31	0.51
1:A:146:ARG:HE	1:A:205:GLN:HE21	1.58	0.51
3:C:24:VAL:HG11	3:C:123:LEU:CD2	2.40	0.51
2:B:65:ASN:OD1	2:B:66:GLU:HG3	2.11	0.51
1:A:39:ARG:HG2	1:A:50:CYS:SG	2.51	0.51
1:A:197:MSE:CE	1:A:198:CYS:H	2.21	0.50
3:C:158:LEU:CB	3:C:163:LEU:HD11	2.41	0.50
2:B:1:MSE:HE2	2:B:72:VAL:HG12	1.92	0.50
2:B:2:LYS:O	2:B:69:MSE:HA	2.11	0.50
2:B:7:ILE:HD12	2:B:101:LEU:HD23	1.94	0.50
2:B:151:VAL:HG23	2:B:151:VAL:O	2.12	0.50
2:B:178:ASN:HA	2:B:234:ILE:CG2	2.41	0.49
1:A:170:ILE:HG22	1:A:211:GLU:HA	1.94	0.49
3:C:98:SER:C	3:C:100:PRO:HD3	2.32	0.49

*Continued on next page...*

*Continued from previous page...*

Atom-1	Atom-2	Interatomic distance (Å)	Clash overlap (Å)
3:C:83:ARG:HG3	3:C:83:ARG:HH11	1.76	0.49
1:A:101:LEU:C	1:A:102:ASN:HD22	2.16	0.49
3:C:155:LYS:HG3	3:C:244:ARG:HG2	1.95	0.49
3:C:17:LEU:HD12	3:C:18:VAL:N	2.28	0.49
2:B:160:LEU:HD11	2:B:263:PHE:CD1	2.47	0.49
3:C:24:VAL:CG1	3:C:108:LEU:HB2	2.42	0.48
2:B:268:GLU:O	2:B:269:ASP:CG	2.51	0.48
2:B:43:LEU:C	2:B:43:LEU:HD13	2.34	0.48
3:C:13:ASP:OD1	3:C:13:ASP:O	2.31	0.48
1:A:150:ARG:NH2	1:A:233:ASN:HB2	2.29	0.48
2:B:184:ALA:HA	2:B:227:MSE:HE2	1.96	0.48
3:C:110:MSE:HG2	3:C:121:LEU:HD23	1.95	0.48
1:A:225:LEU:HG	1:A:260:PHE:CD1	2.49	0.48
2:B:121:SER:HB2	5:B:318:HOH:O	2.12	0.48
1:A:120:LYS:HE2	1:A:122:HIS:CE1	2.49	0.48
3:C:45:THR:CG2	3:C:46:LYS:N	2.76	0.47
2:B:259:LYS:O	2:B:260:MSE:HB2	2.14	0.47
1:A:249:PHE:CE2	1:A:262:LEU:HD12	2.49	0.47
3:C:187:TYR:HD2	3:C:204:PRO:HA	1.79	0.47
3:C:57:LYS:HA	3:C:143:LEU:HD11	1.97	0.47
3:C:175:GLU:HG3	3:C:176:VAL:HG13	1.97	0.47
2:B:173:MSE:HE1	2:B:192:LEU:HB3	1.97	0.47
2:B:36:PRO:CA	2:B:69:MSE:HE2	2.45	0.47
3:C:174:SER:CB	3:C:193:PHE:H	2.28	0.47
1:A:170:ILE:HD12	1:A:170:ILE:N	2.30	0.46
1:A:1:MSE:H1	1:A:65:THR:CB	2.28	0.46
2:B:139:PRO:HG2	2:B:142:LEU:HG	1.97	0.46
2:B:76:ASN:HB2	2:B:140:ARG:NH1	2.30	0.46
1:A:10:VAL:HG13	1:A:11:LYS:N	2.30	0.46
2:B:247:ASN:ND2	2:B:248:PRO:HD2	2.26	0.46
3:C:121:LEU:HB2	3:C:132:CYS:HB2	1.97	0.46
3:C:18:VAL:HB	3:C:74:LYS:HG2	1.97	0.46
2:B:76:ASN:HD22	2:B:140:ARG:CZ	2.27	0.46
2:B:212:PRO:O	2:B:213:LEU:HB2	2.15	0.46
1:A:197:MSE:HE1	2:B:127:ARG:HB3	1.98	0.46
3:C:89:LEU:O	3:C:89:LEU:HD12	2.15	0.46
3:C:232:THR:O	3:C:236:VAL:HG23	2.15	0.46
1:A:252:LYS:HG3	1:A:257:ASP:OD1	2.16	0.46
1:A:102:ASN:HD22	1:A:102:ASN:N	2.12	0.46
1:A:41:VAL:HG21	1:A:45:ARG:HD3	1.98	0.46
3:C:17:LEU:HD12	3:C:18:VAL:H	1.80	0.45

*Continued on next page...*

*Continued from previous page...*

Atom-1	Atom-2	Interatomic distance (Å)	Clash overlap (Å)
1:A:24:GLY:HA3	1:A:40:THR:OG1	2.16	0.45
2:B:112:CYS:HA	2:B:133:ILE:O	2.16	0.45
1:A:70:LEU:HD23	5:A:303:HOH:O	2.16	0.45
3:C:259:ASN:ND2	3:C:263:GLN:HB2	2.31	0.45
3:C:191:SER:OG	3:C:200:HIS:HD2	1.99	0.45
2:B:81:LEU:N	2:B:81:LEU:HD12	2.30	0.45
2:B:101:LEU:HD11	2:B:115:VAL:HG13	1.98	0.45
1:A:200:GLY:HA3	1:A:202:GLU:OE2	2.17	0.45
3:C:254:GLN:HG3	5:C:307:HOH:O	2.14	0.45
3:C:24:VAL:HG13	3:C:108:LEU:HB2	1.99	0.45
1:A:9:ASN:HA	1:A:12:VAL:HG13	1.99	0.45
1:A:158:PRO:HG2	1:A:197:MSE:HG3	1.99	0.45
2:B:76:ASN:ND2	2:B:140:ARG:HD3	2.31	0.45
3:C:83:ARG:NH1	3:C:83:ARG:HG3	2.32	0.45
3:C:74:LYS:HG3	5:C:292:HOH:O	2.16	0.45
1:A:85:ARG:HD3	3:C:169:GLU:OE1	2.17	0.45
1:A:68:GLN:C	1:A:68:GLN:NE2	2.69	0.45
1:A:146:ARG:HG3	1:A:237:SER:OG	2.16	0.45
2:B:178:ASN:HA	2:B:234:ILE:HG22	1.99	0.45
2:B:43:LEU:CD1	2:B:45:ASP:H	2.23	0.44
1:A:10:VAL:CG1	5:A:310:HOH:O	2.66	0.44
2:B:43:LEU:CD1	2:B:45:ASP:HB3	2.41	0.44
3:C:229:LYS:N	3:C:230:PRO:HD2	2.32	0.44
3:C:156:ILE:O	3:C:242:SER:HA	2.18	0.44
2:B:60:GLN:CG	2:B:67:PHE:CG	2.99	0.44
1:A:102:ASN:ND2	1:A:102:ASN:N	2.65	0.44
1:A:155:ALA:CB	1:A:199:LEU:HD11	2.47	0.44
1:A:150:ARG:HH11	1:A:150:ARG:HG3	1.82	0.44
2:B:110:PHE:HB2	2:B:111:PRO:HD2	2.00	0.44
3:C:172:MSE:CE	3:C:229:LYS:HD2	2.41	0.44
1:A:193:MSE:HE3	2:B:90:ARG:NH1	2.33	0.44
2:B:96:GLN:HG3	2:B:97:ASN:N	2.32	0.44
2:B:167:LYS:O	2:B:171:GLU:HB2	2.17	0.44
3:C:107:ALA:O	3:C:123:LEU:HA	2.18	0.44
1:A:1:MSE:N	1:A:65:THR:CG2	2.81	0.44
3:C:135:ASN:H	3:C:135:ASN:HD22	1.66	0.44
3:C:60:GLN:HB2	3:C:145:PHE:HE2	1.83	0.44
2:B:224:VAL:CG1	2:B:225:GLU:N	2.81	0.43
3:C:259:ASN:HD21	3:C:263:GLN:HB2	1.82	0.43
2:B:101:LEU:HD11	2:B:115:VAL:CG1	2.48	0.43
3:C:156:ILE:HG22	3:C:158:LEU:HD22	2.00	0.43

*Continued on next page...*

*Continued from previous page...*

Atom-1	Atom-2	Interatomic distance (Å)	Clash overlap (Å)
3:C:204:PRO:HG2	3:C:207:SER:HB2	1.99	0.43
2:B:250:LYS:CE	2:B:252:LEU:HD12	2.49	0.43
1:A:1:MSE:N	1:A:65:THR:CB	2.81	0.43
3:C:57:LYS:HA	3:C:143:LEU:CD1	2.49	0.43
2:B:36:PRO:CB	2:B:69:MSE:HE2	2.49	0.43
1:A:29:LEU:HD23	1:A:29:LEU:O	2.18	0.43
2:B:60:GLN:HG3	2:B:67:PHE:CD1	2.54	0.43
1:A:156:VAL:O	1:A:156:VAL:HG12	2.19	0.42
1:A:21:SER:HA	1:A:77:MSE:HE3	2.01	0.42
2:B:140:ARG:HA	2:B:143:TRP:CE2	2.54	0.42
1:A:239:HIS:HD2	5:A:313:HOH:O	2.02	0.42
3:C:16:SER:O	3:C:75:VAL:HA	2.19	0.42
2:B:29:THR:O	2:B:43:LEU:HD23	2.19	0.42
3:C:171:ASP:OD1	3:C:173:THR:CB	2.64	0.42
1:A:42:ASN:CG	1:A:47:ALA:HB3	2.39	0.42
2:B:36:PRO:HB3	2:B:69:MSE:HE2	2.02	0.42
3:C:148:CYS:C	3:C:150:THR:H	2.20	0.42
3:C:157:ILE:HG12	3:C:242:SER:CB	2.49	0.42
3:C:20:SER:HA	3:C:108:LEU:O	2.19	0.42
2:B:268:GLU:C	2:B:269:ASP:OD1	2.58	0.42
3:C:30:ILE:CG2	3:C:63:ALA:HB1	2.49	0.42
3:C:101:MSE:HE3	3:C:102:PRO:HD2	2.02	0.42
3:C:182:SER:HB2	3:C:218:THR:HG23	2.02	0.42
3:C:53:VAL:HG22	3:C:61:ALA:HB3	2.01	0.42
2:B:169:VAL:O	2:B:173:MSE:HG3	2.20	0.41
2:B:36:PRO:HD3	2:B:69:MSE:CE	2.51	0.41
1:A:189:THR:O	1:A:190:ALA:HB3	2.20	0.41
2:B:88:LEU:O	2:B:92:LEU:HG	2.19	0.41
1:A:96:LYS:HB2	1:A:113:HIS:HB2	2.01	0.41
3:C:155:LYS:HG3	3:C:244:ARG:CG	2.51	0.41
1:A:207:LEU:HD23	1:A:207:LEU:C	2.40	0.41
2:B:248:PRO:CG	2:B:251:ALA:HB2	2.49	0.41
3:C:216:ASN:O	3:C:217:GLN:HB2	2.20	0.41
2:B:190:LEU:HD23	2:B:190:LEU:C	2.41	0.41
1:A:241:ASP:HB3	1:A:242:ALA:H	1.59	0.41
3:C:148:CYS:C	3:C:150:THR:N	2.74	0.41
3:C:174:SER:HB2	3:C:193:PHE:H	1.85	0.41
1:A:42:ASN:HA	1:A:42:ASN:HD22	1.52	0.41
2:B:95:ALA:HA	2:B:98:ALA:HB2	2.02	0.41
1:A:75:ILE:CD1	1:A:108:LEU:HD22	2.51	0.41
3:C:251:LEU:HG	3:C:253:LEU:HD13	2.03	0.41

*Continued on next page...*

Continued from previous page...

Atom-1	Atom-2	Interatomic distance (Å)	Clash overlap (Å)
3:C:157:ILE:HG12	3:C:242:SER:HB2	2.02	0.41
1:A:145:LEU:HD22	1:A:207:LEU:HG	2.01	0.41
2:B:17:THR:HA	2:B:92:LEU:HD13	2.03	0.41
1:A:242:ALA:O	1:A:243:PRO:C	2.57	0.41
1:A:67:GLY:O	1:A:69:ASP:OD1	2.38	0.41
2:B:76:ASN:HD22	2:B:140:ARG:HH11	1.63	0.41
2:B:50:GLY:HA3	2:B:236:LYS:NZ	2.35	0.41
1:A:75:ILE:HG12	1:A:126:PHE:HB3	2.03	0.40
1:A:178:LEU:HD12	1:A:178:LEU:HA	1.87	0.40
2:B:18:ARG:NH2	2:B:268:GLU:OE2	2.45	0.40
2:B:180:LEU:HD22	2:B:237:LEU:HD12	2.04	0.40
2:B:192:LEU:HA	2:B:192:LEU:HD23	1.94	0.40
1:A:174:ARG:HA	5:A:307:HOH:O	2.22	0.40

There are no symmetry-related clashes.

## 5.3 Torsion angles ⓘ

### 5.3.1 Protein backbone ⓘ

In the following table, the Percentiles column shows the percent Ramachandran outliers of the chain as a percentile score with respect to all X-ray entries followed by that with respect to entries of similar resolution.

The Analysed column shows the number of residues for which the backbone conformation was analysed, and the total number of residues.

Mol	Chain	Analysed	Favoured	Allowed	Outliers	Percentiles	
1	A	261/266 (98%)	244 (94%)	15 (6%)	2 (1%)	24	41
2	B	263/281 (94%)	243 (92%)	18 (7%)	2 (1%)	24	41
3	C	261/263 (99%)	245 (94%)	15 (6%)	1 (0%)	39	61
All	All	785/810 (97%)	732 (93%)	48 (6%)	5 (1%)	30	50

All (5) Ramachandran outliers are listed below:

Mol	Chain	Res	Type
3	C	171	ASP
1	A	70	LEU
1	A	91	GLU
2	B	60	GLN

Continued on next page...



*Continued from previous page...*

Mol	Chain	Res	Type
2	B	108	LYS

### 5.3.2 Protein sidechains ⓘ

In the following table, the Percentiles column shows the percent sidechain outliers of the chain as a percentile score with respect to all X-ray entries followed by that with respect to entries of similar resolution.

The Analysed column shows the number of residues for which the sidechain conformation was analysed, and the total number of residues.

Mol	Chain	Analysed	Rotameric	Outliers	Percentiles	
1	A	224/219 (102%)	215 (96%)	9 (4%)	38	64
2	B	248/249 (100%)	236 (95%)	12 (5%)	31	55
3	C	237/230 (103%)	227 (96%)	10 (4%)	36	62
All	All	709/698 (102%)	678 (96%)	31 (4%)	35	60

All (31) residues with a non-rotameric sidechain are listed below:

Mol	Chain	Res	Type
1	A	20	LEU
1	A	42	ASN
1	A	65	THR
1	A	68	GLN
1	A	70	LEU
1	A	178	LEU
1	A	197	MSE
1	A	202	GLU
1	A	225	LEU
2	B	20	SER
2	B	45	ASP
2	B	60	GLN
2	B	69	MSE
2	B	83	LEU
2	B	86	GLU
2	B	120	LEU
2	B	170	VAL
2	B	180	LEU
2	B	237	LEU
2	B	238	LEU
2	B	247	ASN

*Continued on next page...*

*Continued from previous page...*

Mol	Chain	Res	Type
3	C	14	GLN
3	C	24	VAL
3	C	38	GLU
3	C	45	THR
3	C	86	LEU
3	C	135	ASN
3	C	147	PHE
3	C	170	LEU
3	C	175	GLU
3	C	253	LEU

Some sidechains can be flipped to improve hydrogen bonding and reduce clashes. All (21) such sidechains are listed below:

Mol	Chain	Res	Type
1	A	42	ASN
1	A	59	GLN
1	A	62	GLN
1	A	68	GLN
1	A	102	ASN
1	A	111	GLN
1	A	143	HIS
1	A	205	GLN
1	A	208	GLN
2	B	62	ASN
2	B	68	GLN
2	B	76	ASN
2	B	97	ASN
2	B	231	HIS
2	B	244	GLN
2	B	247	ASN
2	B	262	HIS
3	C	35	HIS
3	C	135	ASN
3	C	151	ASN
3	C	200	HIS

### 5.3.3 RNA ⓘ

There are no RNA molecules in this entry.

## 5.4 Non-standard residues in protein, DNA, RNA chains [i](#)

There are no non-standard protein/DNA/RNA residues in this entry.

## 5.5 Carbohydrates [i](#)

There are no carbohydrates in this entry.

## 5.6 Ligand geometry [i](#)

1 ligand is modelled in this entry.

In the following table, the Counts columns list the number of bonds (or angles) for which Mogul statistics could be retrieved, the number of bonds (or angles) that are observed in the model and the number of bonds (or angles) that are defined in the chemical component dictionary. The Link column lists molecule types, if any, to which the group is linked. The Z score for a bond length (or angle) is the number of standard deviations the observed value is removed from the expected value. A bond length (or angle) with  $|Z| > 2$  is considered an outlier worth inspection. RMSZ is the root-mean-square of all Z scores of the bond lengths (or angles).

Mol	Type	Chain	Res	Link	Bond lengths			Bond angles		
					Counts	RMSZ	$\# Z  > 2$	Counts	RMSZ	$\# Z  > 2$
4	SUC	A	6001	-	24,24,24	0.92	0	36,36,36	0.83	1 (2%)

In the following table, the Chirals column lists the number of chiral outliers, the number of chiral centers analysed, the number of these observed in the model and the number defined in the chemical component dictionary. Similar counts are reported in the Torsion and Rings columns. '-' means no outliers of that kind were identified.

Mol	Type	Chain	Res	Link	Chirals	Torsions	Rings
4	SUC	A	6001	-	-	0/12/51/51	0/2/2/2

There are no bond length outliers.

All (1) bond angle outliers are listed below:

Mol	Chain	Res	Type	Atoms	Z	Observed(°)	Ideal(°)
4	A	6001	SUC	O1-C2'-C1'	2.24	116.88	109.69

There are no chirality outliers.

There are no torsion outliers.

There are no ring outliers.

1 monomer is involved in 1 short contact:

Mol	Chain	Res	Type	Clashes	Symm-Clashes
4	A	6001	SUC	1	0

## 5.7 Other polymers [i](#)

There are no such residues in this entry.

## 5.8 Polymer linkage issues [i](#)

There are no chain breaks in this entry.

## 6 Fit of model and data ⓘ

### 6.1 Protein, DNA and RNA chains ⓘ

In the following table, the column labelled ‘#RSRZ> 2’ contains the number (and percentage) of RSRZ outliers, followed by percent RSRZ outliers for the chain as percentile scores relative to all X-ray entries and entries of similar resolution. The OWAB column contains the minimum, median, 95<sup>th</sup> percentile and maximum values of the occupancy-weighted average B-factor per residue. The column labelled ‘Q< 0.9’ lists the number of (and percentage) of residues with an average occupancy less than 0.9.

Mol	Chain	Analysed	<RSRZ>	#RSRZ>2		OWAB(Å <sup>2</sup> )	Q<0.9
1	A	259/266 (97%)	0.18	14 (5%)	29 33	24, 40, 68, 90	0
2	B	260/281 (92%)	0.30	17 (6%)	22 25	23, 42, 73, 85	0
3	C	256/263 (97%)	0.41	19 (7%)	17 19	24, 44, 76, 87	0
All	All	775/810 (95%)	0.29	50 (6%)	22 25	23, 42, 73, 90	0

All (50) RSRZ outliers are listed below:

Mol	Chain	Res	Type	RSRZ
1	A	186	ALA	6.7
3	C	146	ASP	6.7
2	B	45	ASP	6.6
1	A	68	GLN	5.3
1	A	187	ASP	4.9
3	C	216	ASN	4.4
3	C	149	SER	4.1
2	B	72	VAL	4.1
2	B	269	ASP	4.1
2	B	280	SER	4.0
1	A	70	LEU	4.0
1	A	103	GLY	3.9
1	A	33	GLU	3.9
3	C	99	SER	3.8
2	B	224	VAL	3.8
2	B	0	HIS	3.7
1	A	172	ARG	3.6
2	B	226	HIS	3.6
2	B	150	VAL	3.5
3	C	147	PHE	3.5
2	B	213	LEU	3.4
2	B	75	GLU	3.3
3	C	150	THR	3.3

*Continued on next page...*

*Continued from previous page...*

Mol	Chain	Res	Type	RSRZ
3	C	141	GLU	3.3
1	A	69	ASP	3.2
3	C	148	CYS	3.2
1	A	266	SER	3.1
3	C	13	ASP	3.0
3	C	14	GLN	3.0
3	C	208	ASP	2.9
2	B	46	LYS	2.8
3	C	151	ASN	2.7
1	A	183	GLU	2.7
3	C	217	GLN	2.7
3	C	98	SER	2.7
3	C	103	GLY	2.6
2	B	212	PRO	2.6
2	B	140	ARG	2.6
3	C	76	GLN	2.5
1	A	85	ARG	2.5
1	A	107	ARG	2.4
2	B	56	CYS	2.4
3	C	142	THR	2.3
2	B	109	HIS	2.3
2	B	151	VAL	2.2
2	B	47	LEU	2.2
1	A	188	SER	2.1
3	C	184	ASP	2.1
3	C	195	ASN	2.1
1	A	106	SER	2.1

## 6.2 Non-standard residues in protein, DNA, RNA chains [i](#)

There are no non-standard protein/DNA/RNA residues in this entry.

## 6.3 Carbohydrates [i](#)

There are no carbohydrates in this entry.

## 6.4 Ligands [i](#)

In the following table, the Atoms column lists the number of modelled atoms in the group and the number defined in the chemical component dictionary. LLDF column lists the quality of electron density of the group with respect to its neighbouring residues in protein, DNA or RNA chains.

The B-factors column lists the minimum, median, 95<sup>th</sup> percentile and maximum values of B factors of atoms in the group. The column labelled 'Q< 0.9' lists the number of atoms with occupancy less than 0.9.

Mol	Type	Chain	Res	Atoms	RSCC	RSR	LLDF	B-factors( $\text{\AA}^2$ )	Q<0.9
4	SUC	A	6001	23/23	0.64	0.48	6.29	89,92,94,94	0

## 6.5 Other polymers [i](#)

There are no such residues in this entry.