



# Full wwPDB X-ray Structure Validation Report ⓘ

Mar 17, 2016 – 08:39 PM EDT

PDB ID : 5A28  
Title : Leishmania major N-myristoyltransferase in complex with a chlorophenyl inhibitor (compound 13).  
Authors : Rackham, M.D.; Yu, Z.; Brannigan, J.A.; Heal, W.P.; Paape, D.; Barker, K.V.; Wilkinson, A.J.; Smith, D.F.; Tate, E.W.; Leatherbarrow, R.J.  
Deposited on : 2015-05-15  
Resolution : 1.48 Å(reported)

This is a Full wwPDB X-ray Structure Validation Report for a publicly released PDB entry.  
We welcome your comments at [validation@mail.wwpdb.org](mailto:validation@mail.wwpdb.org)  
A user guide is available at  
<http://wwpdb.org/validation/2016/XrayValidationReportHelp>  
with specific help available everywhere you see the ⓘ symbol.

---

The following versions of software and data (see [references ⓘ](#)) were used in the production of this report:

MolProbity : 4.02b-467  
Mogul : 1.7.1 (RC1), CSD as537be (2016)  
Xtriage (Phenix) : 1.9-1692  
EDS : rb-20027107  
Percentile statistics : 20151230.v01 (using entries in the PDB archive December 30th 2015)  
Refmac : 5.8.0122  
CCP4 : 6.5.0  
Ideal geometry (proteins) : Engh & Huber (2001)  
Ideal geometry (DNA, RNA) : Parkinson et al. (1996)  
Validation Pipeline (wwPDB-VP) : rb-20027107

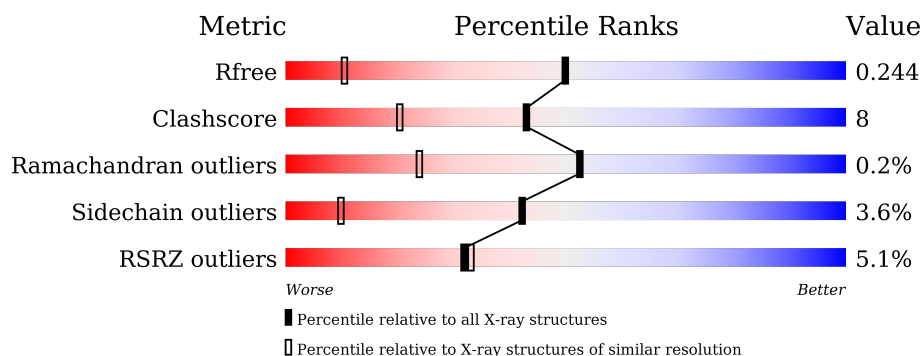
# 1 Overall quality at a glance

The following experimental techniques were used to determine the structure:

*X-RAY DIFFRACTION*

The reported resolution of this entry is 1.48 Å.

Percentile scores (ranging between 0-100) for global validation metrics of the entry are shown in the following graphic. The table shows the number of entries on which the scores are based.



Metric	Whole archive (#Entries)	Similar resolution (#Entries, resolution range(Å))
$R_{free}$	91344	3129 (1.50-1.46)
Clashscore	102246	3380 (1.50-1.46)
Ramachandran outliers	100387	3310 (1.50-1.46)
Sidechain outliers	100360	3308 (1.50-1.46)
RSRZ outliers	91569	3133 (1.50-1.46)

The table below summarises the geometric issues observed across the polymeric chains and their fit to the electron density. The red, orange, yellow and green segments on the lower bar indicate the fraction of residues that contain outliers for  $\geq 3$ , 2, 1 and 0 types of geometric quality criteria. A grey segment represents the fraction of residues that are not modelled. The numeric value for each fraction is indicated below the corresponding segment, with a dot representing fractions  $\leq 5\%$ . The upper red bar (where present) indicates the fraction of residues that have poor fit to the electron density. The numeric value is given above the bar.

Mol	Chain	Length	Quality of chain
1	A	411	

## 2 Entry composition [i](#)

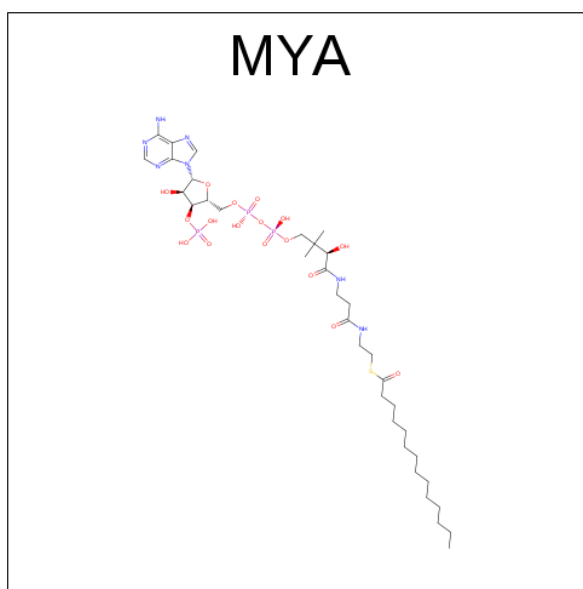
There are 5 unique types of molecules in this entry. The entry contains 4018 atoms, of which 0 are hydrogens and 0 are deuteriums.

In the tables below, the ZeroOcc column contains the number of atoms modelled with zero occupancy, the AltConf column contains the number of residues with at least one atom in alternate conformation and the Trace column contains the number of residues modelled with at most 2 atoms.

- Molecule 1 is a protein called GLYCYLPEPTIDE N-TETRADECANOYLTRANSFERASE.

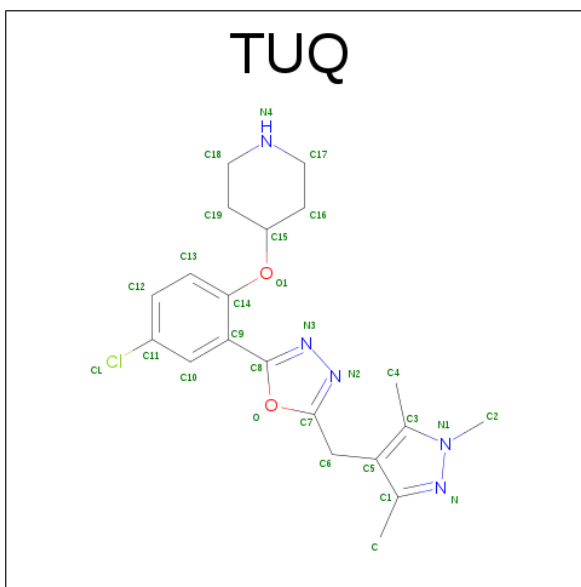
Mol	Chain	Residues	Atoms					ZeroOcc	AltConf	Trace
			Total	C	N	O	S			
1	A	411	3563	2319	582	643	19	0	38	0

- Molecule 2 is TETRADECANOYL-COA (three-letter code: MYA) (formula: C<sub>35</sub>H<sub>62</sub>N<sub>7</sub>O<sub>17</sub>P<sub>3</sub>S).



Mol	Chain	Residues	Atoms						ZeroOcc	AltConf
			Total	C	N	O	P	S		
2	A	1	63	35	7	17	3	1	0	0

- Molecule 3 is 4-(4-CHLORO-2-{5-[(TRIMETHYL-1H-PYRAZOL-4-YL)METHYL]-1,3,4-OXADIAZOL-2-YL}PHENOXY)PIPERIDINE (three-letter code: TUQ) (formula: C<sub>20</sub>H<sub>24</sub>ClN<sub>5</sub>O<sub>2</sub>).



Mol	Chain	Residues	Atoms					ZeroOcc	AltConf
3	A	1	Total	C	Cl	N	O	0	0
			28	20	1	5	2		

- Molecule 4 is MAGNESIUM ION (three-letter code: MG) (formula: Mg).

Mol	Chain	Residues	Atoms		ZeroOcc	AltConf
4	A	1	Total	Mg	0	0
			1	1		

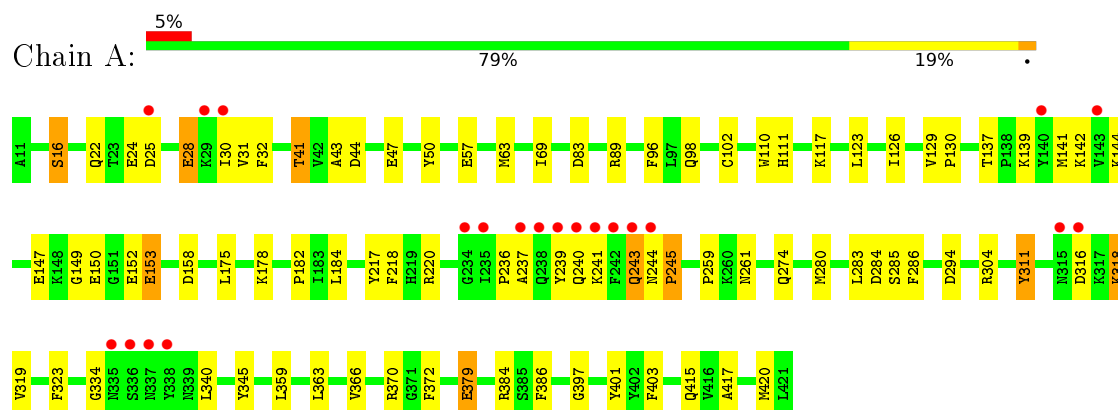
- Molecule 5 is water.

Mol	Chain	Residues	Atoms		ZeroOcc	AltConf
5	A	361	Total	O	0	2
			363	363		

### 3 Residue-property plots [i](#)

These plots are drawn for all protein, RNA and DNA chains in the entry. The first graphic for a chain summarises the proportions of errors displayed in the second graphic. The second graphic shows the sequence view annotated by issues in geometry and electron density. Residues are color-coded according to the number of geometric quality criteria for which they contain at least one outlier: green = 0, yellow = 1, orange = 2 and red = 3 or more. A red dot above a residue indicates a poor fit to the electron density ( $RSRZ > 2$ ). Stretches of 2 or more consecutive residues without any outlier are shown as a green connector. Residues present in the sample, but not in the model, are shown in grey.

- Molecule 1: GLYCYLPEPTIDE N-TETRADECANOYLTRANSFERASE



## 4 Data and refinement statistics

Property	Value	Source
Space group	P 1 21 1	Depositor
Cell constants a, b, c, $\alpha$ , $\beta$ , $\gamma$	48.45Å 92.16Å 53.46Å 90.00° 113.79° 90.00°	Depositor
Resolution (Å)	48.92 – 1.48 48.92 – 1.48	Depositor EDS
% Data completeness (in resolution range)	98.8 (48.92-1.48) 98.8 (48.92-1.48)	Depositor EDS
$R_{merge}$	0.04	Depositor
$R_{sym}$	(Not available)	Depositor
$\langle I/\sigma(I) \rangle$ <sup>1</sup>	1.77 (at 1.48Å)	Xtriage
Refinement program	REFMAC 5.8.0107	Depositor
R, $R_{free}$	0.201 , 0.245 0.200 , 0.244	Depositor DCC
$R_{free}$ test set	3493 reflections (5.21%)	DCC
Wilson B-factor (Å <sup>2</sup> )	19.2	Xtriage
Anisotropy	0.465	Xtriage
Bulk solvent $k_{sol}$ (e/Å <sup>3</sup> ), $B_{sol}$ (Å <sup>2</sup> )	0.31 , 36.8	EDS
Estimated twinning fraction	No twinning to report.	Xtriage
L-test for twinning <sup>2</sup>	$\langle  L  \rangle = 0.49$ , $\langle L^2 \rangle = 0.32$	Xtriage
Outliers	0 of 70561 reflections	Xtriage
$F_o, F_c$ correlation	0.97	EDS
Total number of atoms	4018	wwPDB-VP
Average B, all atoms (Å <sup>2</sup> )	27.0	wwPDB-VP

Xtriage's analysis on translational NCS is as follows: *The largest off-origin peak in the Patterson function is 6.38% of the height of the origin peak. No significant pseudotranslation is detected.*

<sup>1</sup>Intensities estimated from amplitudes.

<sup>2</sup>Theoretical values of  $\langle |L| \rangle$ ,  $\langle L^2 \rangle$  for acentric reflections are 0.5, 0.375 respectively for untwinned datasets, and 0.333, 0.2 for perfectly twinned datasets.

## 5 Model quality

### 5.1 Standard geometry

Bond lengths and bond angles in the following residue types are not validated in this section: MYA, TUQ, MG

The Z score for a bond length (or angle) is the number of standard deviations the observed value is removed from the expected value. A bond length (or angle) with  $|Z| > 5$  is considered an outlier worth inspection. RMSZ is the root-mean-square of all Z scores of the bond lengths (or angles).

Mol	Chain	Bond lengths		Bond angles	
		RMSZ	$\# Z  > 5$	RMSZ	$\# Z  > 5$
1	A	1.32	13/3769 (0.3%)	1.24	17/5119 (0.3%)

Chiral center outliers are detected by calculating the chiral volume of a chiral center and verifying if the center is modelled as a planar moiety or with the opposite hand. A planarity outlier is detected by checking planarity of atoms in a peptide group, atoms in a mainchain group or atoms of a sidechain that are expected to be planar.

Mol	Chain	#Chirality outliers	#Planarity outliers
1	A	0	1

All (13) bond length outliers are listed below:

Mol	Chain	Res	Type	Atoms	Z	Observed(Å)	Ideal(Å)
1	A	384	ARG	CZ-NH2	6.85	1.42	1.33
1	A	379	GLU	CD-OE1	6.77	1.33	1.25
1	A	311	TYR	CG-CD1	6.31	1.47	1.39
1	A	110	TRP	CG-CD1	6.18	1.45	1.36
1	A	50	TYR	CE1-CZ	5.56	1.45	1.38
1	A	403	PHE	CG-CD1	5.54	1.47	1.38
1	A	345	TYR	CG-CD1	5.50	1.46	1.39
1	A	286	PHE	CG-CD1	5.50	1.47	1.38
1	A	110	TRP	CZ3-CH2	5.37	1.48	1.40
1	A	16[A]	SER	CA-CB	5.27	1.60	1.52
1	A	16[B]	SER	CA-CB	5.27	1.60	1.52
1	A	386	PHE	CG-CD2	5.16	1.46	1.38
1	A	284	ASP	CB-CG	5.03	1.62	1.51

All (17) bond angle outliers are listed below:

Mol	Chain	Res	Type	Atoms	Z	Observed(°)	Ideal(°)
1	A	220	ARG	NE-CZ-NH2	-10.12	115.24	120.30
1	A	89	ARG	NE-CZ-NH2	-8.82	115.89	120.30
1	A	372	PHE	CB-CG-CD2	-8.80	114.64	120.80
1	A	370	ARG	NE-CZ-NH2	-8.68	115.96	120.30
1	A	89	ARG	NE-CZ-NH1	8.09	124.35	120.30
1	A	83	ASP	CB-CG-OD2	7.29	124.86	118.30
1	A	304	ARG	CG-CD-NE	-6.91	97.28	111.80
1	A	220	ARG	NE-CZ-NH1	6.88	123.74	120.30
1	A	372	PHE	CB-CG-CD1	6.58	125.40	120.80
1	A	96	PHE	CB-CG-CD2	-5.75	116.78	120.80
1	A	370	ARG	NE-CZ-NH1	5.74	123.17	120.30
1	A	44	ASP	CB-CG-OD2	-5.66	113.20	118.30
1	A	359	LEU	CB-CG-CD1	-5.62	101.45	111.00
1	A	401	TYR	CD1-CE1-CZ	-5.33	115.00	119.80
1	A	323	PHE	CB-CG-CD1	5.29	124.50	120.80
1	A	137	THR	N-CA-C	5.21	125.08	111.00
1	A	294	ASP	CB-CG-OD1	5.11	122.90	118.30

There are no chirality outliers.

All (1) planarity outliers are listed below:

Mol	Chain	Res	Type	Group
1	A	261	ASN	Peptide

## 5.2 Too-close contacts ⓘ

In the following table, the Non-H and H(model) columns list the number of non-hydrogen atoms and hydrogen atoms in the chain respectively. The H(added) column lists the number of hydrogen atoms added and optimized by MolProbity. The Clashes column lists the number of clashes within the asymmetric unit, whereas Symm-Clashes lists symmetry related clashes.

Mol	Chain	Non-H	H(model)	H(added)	Clashes	Symm-Clashes
1	A	3563	0	3583	60	0
2	A	63	0	58	0	0
3	A	28	0	0	0	0
4	A	1	0	0	0	0
5	A	363	0	0	10	0
All	All	4018	0	3641	60	0

The all-atom clashscore is defined as the number of clashes found per 1000 atoms (including hydrogen atoms). The all-atom clashscore for this structure is 8.

All (60) close contacts within the same asymmetric unit are listed below, sorted by their clash



magnitude.

Atom-1	Atom-2	Interatomic distance (Å)	Clash overlap (Å)
1:A:415[B]:GLN:NE2	5:A:2352:HOH:O	1.57	1.34
1:A:24[B]:GLU:OE2	5:A:2018:HOH:O	1.57	1.20
1:A:415[B]:GLN:CD	5:A:2352:HOH:O	1.75	1.17
1:A:415[B]:GLN:OE1	5:A:2352:HOH:O	1.67	1.11
1:A:175[B]:LEU:HD22	1:A:178[B]:LYS:NZ	1.82	0.94
1:A:175[B]:LEU:HD22	1:A:178[B]:LYS:HZ2	1.31	0.94
1:A:98[B]:GLN:OE1	5:A:2134:HOH:O	1.90	0.88
1:A:175[B]:LEU:CD2	1:A:178[B]:LYS:NZ	2.41	0.83
1:A:31:VAL:HB	1:A:141:MET:HE2	1.64	0.79
1:A:25:ASP:HA	1:A:28:GLU:HB2	1.65	0.77
1:A:142:LYS:NZ	1:A:158:ASP:OD2	2.23	0.70
1:A:31:VAL:HB	1:A:141:MET:CE	2.25	0.66
1:A:178[B]:LYS:NZ	5:A:2211:HOH:O	2.30	0.65
1:A:16[A]:SER:HA	1:A:22:GLN:HE22	1.63	0.63
1:A:316:ASP:O	1:A:318:LYS:HE2	1.98	0.63
1:A:236:PRO:HD2	1:A:239:TYR:CD1	2.33	0.63
1:A:16[B]:SER:HA	1:A:22:GLN:HE22	1.64	0.62
1:A:175[B]:LEU:CD2	1:A:178[B]:LYS:HZ1	2.12	0.61
1:A:63:MET:O	1:A:69[A]:ILE:HD11	2.01	0.60
1:A:175[B]:LEU:HD23	1:A:178[B]:LYS:CE	2.32	0.59
1:A:274:GLN:NE2	1:A:319:VAL:H	2.00	0.57
1:A:123:LEU:HD13	1:A:175[A]:LEU:HD21	1.87	0.56
1:A:41:THR:HG23	1:A:43:ALA:H	1.70	0.55
1:A:175[B]:LEU:HD23	1:A:178[B]:LYS:HE3	1.88	0.54
1:A:32:PHE:CE2	1:A:153[A]:GLU:HG3	2.44	0.52
1:A:149:GLY:O	5:A:2188:HOH:O	2.19	0.52
1:A:280[B]:MET:HA	1:A:280[B]:MET:CE	2.39	0.51
1:A:311:TYR:CE1	1:A:366:VAL:HG11	2.46	0.51
1:A:420[B]:MET:HA	1:A:420[B]:MET:HE2	1.91	0.51
1:A:126:ILE:HG22	1:A:184[A]:LEU:HD22	1.92	0.51
1:A:175[B]:LEU:CD2	1:A:178[B]:LYS:CE	2.89	0.51
1:A:334:GLY:HA2	5:A:2311:HOH:O	2.10	0.51
1:A:69[A]:ILE:HD13	1:A:98[A]:GLN:HG2	1.93	0.51
1:A:25:ASP:CA	1:A:28:GLU:HB2	2.40	0.50
1:A:139:LYS:HE2	1:A:285:SER:O	2.11	0.50
1:A:237:ALA:O	1:A:240:GLN:HG2	2.12	0.50
1:A:25:ASP:HA	1:A:28:GLU:CB	2.39	0.50
1:A:57:GLU:OE1	1:A:117:LYS:HG2	2.12	0.50
1:A:274:GLN:HE22	1:A:318:LYS:HA	1.80	0.47
1:A:32:PHE:HE2	1:A:153[A]:GLU:HG3	1.80	0.47
1:A:31:VAL:CB	1:A:141:MET:HE2	2.40	0.47

*Continued on next page...*

Continued from previous page...

Atom-1	Atom-2	Interatomic distance (Å)	Clash overlap (Å)
1:A:274:GLN:HE22	1:A:319:VAL:H	1.62	0.46
1:A:41:THR:CG2	1:A:43:ALA:H	2.28	0.46
1:A:243:GLN:HE21	1:A:244:ASN:HB2	1.81	0.46
1:A:217[A]:TYR:CD2	1:A:397:GLY:C	2.90	0.45
1:A:129:VAL:HB	1:A:130:PRO:HD2	1.98	0.45
1:A:283:LEU:HD22	1:A:417:ALA:HB1	1.99	0.44
1:A:363:LEU:C	1:A:363:LEU:HD23	2.38	0.44
1:A:280[B]:MET:HA	1:A:280[B]:MET:HE3	2.00	0.43
1:A:152:GLU:HB2	5:A:2190:HOH:O	2.18	0.43
1:A:69[A]:ILE:CD1	1:A:98[A]:GLN:HG2	2.50	0.42
1:A:30:ILE:HA	5:A:2022:HOH:O	2.19	0.42
1:A:218:PHE:CE1	1:A:379:GLU:HB3	2.55	0.42
1:A:123:LEU:HB3	1:A:175[A]:LEU:HD22	2.02	0.42
1:A:16[A]:SER:HA	1:A:22:GLN:NE2	2.33	0.41
1:A:244:ASN:HA	1:A:245:PRO:HD3	2.00	0.41
1:A:63:MET:HB3	1:A:102:CYS:SG	2.60	0.41
1:A:16[B]:SER:HA	1:A:22:GLN:NE2	2.34	0.40

There are no symmetry-related clashes.

## 5.3 Torsion angles

### 5.3.1 Protein backbone

In the following table, the Percentiles column shows the percent Ramachandran outliers of the chain as a percentile score with respect to all X-ray entries followed by that with respect to entries of similar resolution.

The Analysed column shows the number of residues for which the backbone conformation was analysed, and the total number of residues.

Mol	Chain	Analysed	Favoured	Allowed	Outliers	Percentiles
1	A	447/411 (109%)	430 (96%)	16 (4%)	1 (0%)	52 24

All (1) Ramachandran outliers are listed below:

Mol	Chain	Res	Type
1	A	245	PRO

### 5.3.2 Protein sidechains ⓘ

In the following table, the Percentiles column shows the percent sidechain outliers of the chain as a percentile score with respect to all X-ray entries followed by that with respect to entries of similar resolution.

The Analysed column shows the number of residues for which the sidechain conformation was analysed, and the total number of residues.

Mol	Chain	Analysed	Rotameric	Outliers	Percentiles
1	A	400/362 (110%)	384 (96%)	16 (4%)	38 7

All (16) residues with a non-rotameric sidechain are listed below:

Mol	Chain	Res	Type
1	A	28	GLU
1	A	41	THR
1	A	47[A]	GLU
1	A	47[B]	GLU
1	A	144	LYS
1	A	147[A]	GLU
1	A	147[B]	GLU
1	A	150	GLU
1	A	153[A]	GLU
1	A	153[B]	GLU
1	A	182	PRO
1	A	241	LYS
1	A	243	GLN
1	A	259	PRO
1	A	318	LYS
1	A	340	LEU

Some sidechains can be flipped to improve hydrogen bonding and reduce clashes. All (7) such sidechains are listed below:

Mol	Chain	Res	Type
1	A	18	GLN
1	A	22	GLN
1	A	111	HIS
1	A	243	GLN
1	A	261	ASN
1	A	274	GLN
1	A	339	ASN

### 5.3.3 RNA ⓘ

There are no RNA molecules in this entry.

## 5.4 Non-standard residues in protein, DNA, RNA chains ⓘ

There are no non-standard protein/DNA/RNA residues in this entry.

## 5.5 Carbohydrates ⓘ

There are no carbohydrates in this entry.

## 5.6 Ligand geometry ⓘ

Of 3 ligands modelled in this entry, 1 is monoatomic - leaving 2 for Mogul analysis.

In the following table, the Counts columns list the number of bonds (or angles) for which Mogul statistics could be retrieved, the number of bonds (or angles) that are observed in the model and the number of bonds (or angles) that are defined in the chemical component dictionary. The Link column lists molecule types, if any, to which the group is linked. The Z score for a bond length (or angle) is the number of standard deviations the observed value is removed from the expected value. A bond length (or angle) with  $|Z| > 2$  is considered an outlier worth inspection. RMSZ is the root-mean-square of all Z scores of the bond lengths (or angles).

Mol	Type	Chain	Res	Link	Bond lengths			Bond angles		
					Counts	RMSZ	$\# Z  > 2$	Counts	RMSZ	$\# Z  > 2$
2	MYA	A	1001	4	53,65,65	1.19	4 (7%)	64,91,91	1.80	13 (20%)
3	TUQ	A	1002	-	26,31,31	1.71	7 (26%)	32,44,44	2.98	17 (53%)

In the following table, the Chirals column lists the number of chiral outliers, the number of chiral centers analysed, the number of these observed in the model and the number defined in the chemical component dictionary. Similar counts are reported in the Torsion and Rings columns. '-' means no outliers of that kind were identified.

Mol	Type	Chain	Res	Link	Chirals	Torsions	Rings
2	MYA	A	1001	4	-	0/59/80/80	0/3/3/3
3	TUQ	A	1002	-	-	0/8/20/20	0/3/4/4

All (11) bond length outliers are listed below:

Mol	Chain	Res	Type	Atoms	Z	Observed(Å)	Ideal(Å)
2	A	1001	MYA	O4X-C1X	-3.00	1.37	1.41

*Continued on next page...*

*Continued from previous page...*

Mol	Chain	Res	Type	Atoms	Z	Observed(Å)	Ideal(Å)
3	A	1002	TUQ	C9-C14	-2.18	1.36	1.40
2	A	1001	MYA	C3X-C4X	-2.13	1.46	1.52
2	A	1001	MYA	O5X-C5X	-2.08	1.36	1.44
3	A	1002	TUQ	C4-C3	2.18	1.54	1.49
3	A	1002	TUQ	C11-CL	2.26	1.79	1.74
2	A	1001	MYA	C7-C6	2.60	1.59	1.51
3	A	1002	TUQ	C19-C15	2.77	1.58	1.51
3	A	1002	TUQ	C3-C5	3.17	1.45	1.39
3	A	1002	TUQ	N-N1	3.88	1.41	1.37
3	A	1002	TUQ	C13-C12	4.23	1.47	1.38

All (30) bond angle outliers are listed below:

Mol	Chain	Res	Type	Atoms	Z	Observed(°)	Ideal(°)
2	A	1001	MYA	N3A-C2A-N1A	-6.60	123.68	128.87
3	A	1002	TUQ	C13-C12-C11	-5.53	113.22	119.22
2	A	1001	MYA	C1X-N9A-C4A	-5.07	121.15	126.81
2	A	1001	MYA	C4X-O4X-C1X	-3.97	105.44	109.64
3	A	1002	TUQ	C2-N1-N	-3.81	111.48	118.04
3	A	1002	TUQ	C12-C11-CL	-3.68	113.12	119.35
3	A	1002	TUQ	C9-C10-C11	-3.53	112.99	119.09
3	A	1002	TUQ	C16-C15-C19	-3.31	106.09	111.56
3	A	1002	TUQ	C6-C5-C3	-3.14	121.21	127.19
3	A	1002	TUQ	C10-C9-C8	-3.10	111.28	118.41
3	A	1002	TUQ	C5-C3-N1	-2.95	104.37	106.81
2	A	1001	MYA	O3X-P3X-O9A	-2.76	100.88	107.48
2	A	1001	MYA	C2-C3-N4	-2.53	107.34	112.43
3	A	1002	TUQ	O1-C14-C13	-2.31	117.94	123.83
2	A	1001	MYA	O10-C10-C9	-2.30	105.05	110.52
2	A	1001	MYA	O4X-C1X-N9A	-2.19	103.98	108.11
3	A	1002	TUQ	C10-C11-CL	-2.11	116.32	119.13
2	A	1001	MYA	O7A-P3X-O9A	-2.01	104.06	110.63
2	A	1001	MYA	O8A-P3X-O9A	2.04	117.27	110.63
2	A	1001	MYA	C7-N8-C9	2.25	127.12	122.62
3	A	1002	TUQ	C14-C9-C8	2.38	125.82	122.64
2	A	1001	MYA	O5A-P2A-O4A	2.51	125.61	112.56
3	A	1002	TUQ	C6-C5-C1	2.92	132.87	127.14
3	A	1002	TUQ	C18-C19-C15	3.55	114.08	110.28
2	A	1001	MYA	O7A-P3X-O8A	3.68	120.95	107.44
3	A	1002	TUQ	C10-C9-C14	3.91	122.86	118.04
2	A	1001	MYA	O2M-C2M-C3M	4.31	117.07	109.26
3	A	1002	TUQ	C2-N1-C3	4.96	136.10	129.03

*Continued on next page...*

*Continued from previous page...*

Mol	Chain	Res	Type	Atoms	Z	Observed(°)	Ideal(°)
3	A	1002	TUQ	O1-C15-C19	5.98	123.13	108.31
3	A	1002	TUQ	C12-C11-C10	6.60	130.55	121.53

There are no chirality outliers.

There are no torsion outliers.

There are no ring outliers.

No monomer is involved in short contacts.

## 5.7 Other polymers [i](#)

There are no such residues in this entry.

## 5.8 Polymer linkage issues [i](#)

There are no chain breaks in this entry.

## 6 Fit of model and data [i](#)

### 6.1 Protein, DNA and RNA chains [i](#)

In the following table, the column labelled ‘#RSRZ> 2’ contains the number (and percentage) of RSRZ outliers, followed by percent RSRZ outliers for the chain as percentile scores relative to all X-ray entries and entries of similar resolution. The OWAB column contains the minimum, median, 95<sup>th</sup> percentile and maximum values of the occupancy-weighted average B-factor per residue. The column labelled ‘Q< 0.9’ lists the number of (and percentage) of residues with an average occupancy less than 0.9.

Mol	Chain	Analysed	<RSRZ>	#RSRZ>2		OWAB(Å <sup>2</sup> )	Q<0.9
1	A	411/411 (100%)	0.28	21 (5%)	32 33	11, 23, 54, 107	10 (2%)

All (21) RSRZ outliers are listed below:

Mol	Chain	Res	Type	RSRZ
1	A	242	PHE	7.8
1	A	241	LYS	4.5
1	A	337	ASN	4.1
1	A	237	ALA	3.9
1	A	143	VAL	3.8
1	A	25	ASP	3.8
1	A	336	SER	3.7
1	A	238	GLN	3.7
1	A	240	GLN	3.6
1	A	338	TYR	3.4
1	A	244	ASN	3.4
1	A	239	TYR	3.3
1	A	30	ILE	3.3
1	A	140	TYR	3.2
1	A	335	ASN	2.7
1	A	243	GLN	2.5
1	A	29	LYS	2.4
1	A	315	ASN	2.4
1	A	234	GLY	2.3
1	A	235	ILE	2.1
1	A	316	ASP	2.0

### 6.2 Non-standard residues in protein, DNA, RNA chains [i](#)

There are no non-standard protein/DNA/RNA residues in this entry.

### 6.3 Carbohydrates [i](#)

There are no carbohydrates in this entry.

### 6.4 Ligands [i](#)

In the following table, the Atoms column lists the number of modelled atoms in the group and the number defined in the chemical component dictionary. LLDF column lists the quality of electron density of the group with respect to its neighbouring residues in protein, DNA or RNA chains. The B-factors column lists the minimum, median, 95<sup>th</sup> percentile and maximum values of B factors of atoms in the group. The column labelled 'Q< 0.9' lists the number of atoms with occupancy less than 0.9.

Mol	Type	Chain	Res	Atoms	RSCC	RSR	LLDF	B-factors( $\text{\AA}^2$ )	Q<0.9
3	TUQ	A	1002	28/28	0.95	0.09	-0.20	14,19,27,30	0
4	MG	A	1003	1/1	0.98	0.08	-1.02	28,28,28,28	0
2	MYA	A	1001	63/63	0.97	0.07	-1.18	12,18,23,28	0

### 6.5 Other polymers [i](#)

There are no such residues in this entry.