



Full wwPDB X-ray Structure Validation Report ⓘ

Jan 31, 2016 – 06:18 PM GMT

PDB ID : 1A4Q
Title : INFLUENZA VIRUS B/BEIJING/1/87 NEURAMINIDASE COMPLEXED
WITH DIHYDROPYRAN-PHENETHYL-PROPYL-CARBOXAMIDE
Authors : Cleasby, A.; Singh, O.; Skarzynski, T.; Wonacott, A.J.
Deposited on : 1998-01-30
Resolution : 1.90 Å(reported)

This is a Full wwPDB X-ray Structure Validation Report for a publicly released PDB entry.
We welcome your comments at validation@mail.wwpdb.org
A user guide is available at
<http://wwpdb.org/validation/2016/XrayValidationReportHelp>
with specific help available everywhere you see the ⓘ symbol.

The following versions of software and data (see [references ⓘ](#)) were used in the production of this report:

MolProbity : 4.02b-467
Mogul : 1.7 (RC4), CSD as536be (2015)
Xtriage (Phenix) : **NOT EXECUTED**
EDS : **NOT EXECUTED**
Percentile statistics : 20151230.v01 (using entries in the PDB archive December 30th 2015)
Ideal geometry (proteins) : Engh & Huber (2001)
Ideal geometry (DNA, RNA) : Parkinson et al. (1996)
Validation Pipeline (wwPDB-VP) : trunk26865

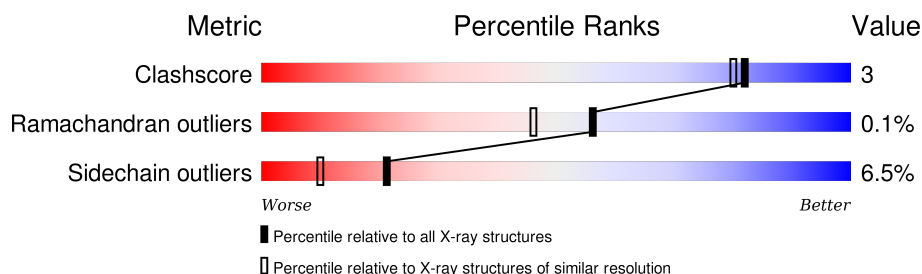
1 Overall quality at a glance

The following experimental techniques were used to determine the structure:

X-RAY DIFFRACTION

The reported resolution of this entry is 1.90 Å.

Percentile scores (ranging between 0-100) for global validation metrics of the entry are shown in the following graphic. The table shows the number of entries on which the scores are based.



Metric	Whole archive (#Entries)	Similar resolution (#Entries, resolution range(Å))
Clashscore	102246	5398 (1.90-1.90)
Ramachandran outliers	100387	5338 (1.90-1.90)
Sidechain outliers	100360	5339 (1.90-1.90)

The table below summarises the geometric issues observed across the polymeric chains and their fit to the electron density. The red, orange, yellow and green segments on the lower bar indicate the fraction of residues that contain outliers for ≥ 3 , 2, 1 and 0 types of geometric quality criteria. A grey segment represents the fraction of residues that are not modelled. The numeric value for each fraction is indicated below the corresponding segment, with a dot representing fractions $\leq 5\%$. The upper red bar (where present) indicates the fraction of residues that have poor fit to the electron density. The numeric value is given above the bar.

Note EDS was not executed.

Mol	Chain	Length	Quality of chain
1	A	390	 85% 12% •
1	B	390	 86% 11% ••

2 Entry composition [i](#)

There are 5 unique types of molecules in this entry. The entry contains 6656 atoms, of which 0 are hydrogens and 0 are deuteriums.

In the tables below, the ZeroOcc column contains the number of atoms modelled with zero occupancy, the AltConf column contains the number of residues with at least one atom in alternate conformation and the Trace column contains the number of residues modelled with at most 2 atoms.

- Molecule 1 is a protein called NEURAMINIDASE.

Mol	Chain	Residues	Atoms					ZeroOcc	AltConf	Trace
1	A	390	Total	C	N	O	S	0	0	0
			3036	1899	533	575	29			
1	B	390	Total	C	N	O	S	0	0	0
			3036	1899	533	575	29			

- Molecule 2 is SUGAR (N-ACETYL-D-GLUCOSAMINE) (three-letter code: NAG) (formula: $C_8H_{15}NO_6$).

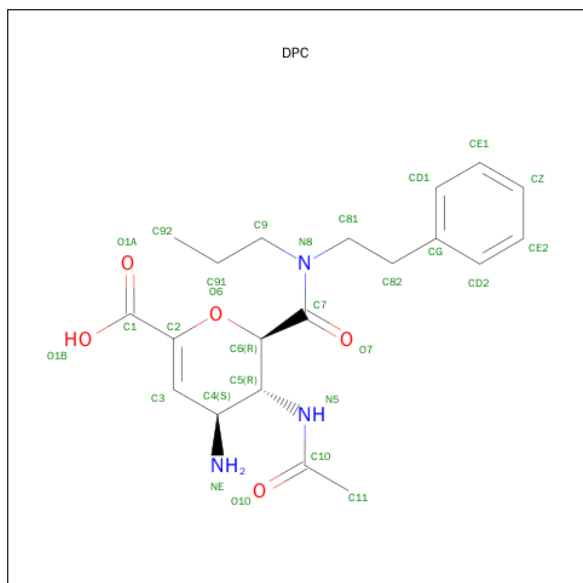


Mol	Chain	Residues	Atoms				ZeroOcc	AltConf
2	A	1	Total	C	N	O	0	0
			14	8	1	5		
2	B	1	Total	C	N	O	0	0
			14	8	1	5		

- Molecule 3 is CALCIUM ION (three-letter code: CA) (formula: Ca).

Mol	Chain	Residues	Atoms	ZeroOcc	AltConf
3	B	2	Total Ca 2 2	0	0
3	A	1	Total Ca 1 1	0	0

- Molecule 4 is 5-ACETYLAMINO-4-AMINO-6-(PHENETHYL-PROPYL-CARBAMOYL)-5,6-DIHYDRO-4H-PYRAN-2-CARBOXYLIC ACID (three-letter code: DPC) (formula: $C_{20}H_{27}N_3O_5$).



Mol	Chain	Residues	Atoms	ZeroOcc	AltConf
4	A	1	Total C N O 28 20 3 5	0	0
4	B	1	Total C N O 28 20 3 5	0	0

- Molecule 5 is water.

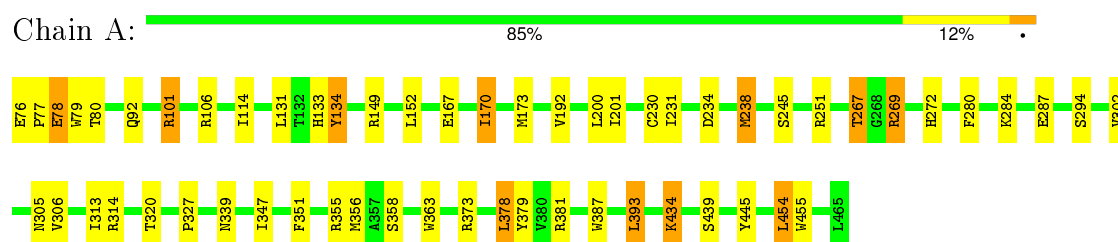
Mol	Chain	Residues	Atoms	ZeroOcc	AltConf
5	A	258	Total O 258 258	0	0
5	B	239	Total O 239 239	0	0

3 Residue-property plots [i](#)

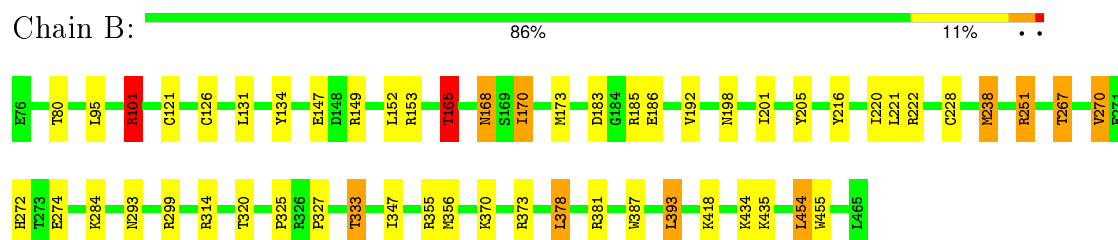
These plots are drawn for all protein, RNA and DNA chains in the entry. The first graphic for a chain summarises the proportions of errors displayed in the second graphic. The second graphic shows the sequence view annotated by issues in geometry and electron density. Residues are color-coded according to the number of geometric quality criteria for which they contain at least one outlier: green = 0, yellow = 1, orange = 2 and red = 3 or more. A red dot above a residue indicates a poor fit to the electron density ($RSRZ > 2$). Stretches of 2 or more consecutive residues without any outlier are shown as a green connector. Residues present in the sample, but not in the model, are shown in grey.

Note EDS was not executed.

• Molecule 1: NEURAMINIDASE



• Molecule 1: NEURAMINIDASE



4 Data and refinement statistics

Xtriage (Phenix) and EDS were not executed - this section will therefore be incomplete.

Property	Value	Source
Space group	P 31 2 1	Depositor
Cell constants a, b, c, α , β , γ	88.30Å 88.30Å 221.10Å 90.00° 90.00° 120.00°	Depositor
Resolution (Å)	34.00 – 1.90	Depositor
% Data completeness (in resolution range)	(Not available) (34.00-1.90)	Depositor
R_{merge}	0.09	Depositor
R_{sym}	(Not available)	Depositor
Refinement program	X-PLOR 3.8	Depositor
R, R_{free}	0.201 , (Not available)	Depositor
Estimated twinning fraction	No twinning to report.	Xtriage
Total number of atoms	6656	wwPDB-VP
Average B, all atoms (Å ²)	13.0	wwPDB-VP

5 Model quality

5.1 Standard geometry

Bond lengths and bond angles in the following residue types are not validated in this section: CA, DPC, NAG

The Z score for a bond length (or angle) is the number of standard deviations the observed value is removed from the expected value. A bond length (or angle) with $|Z| > 5$ is considered an outlier worth inspection. RMSZ is the root-mean-square of all Z scores of the bond lengths (or angles).

Mol	Chain	Bond lengths		Bond angles	
		RMSZ	$\# Z > 5$	RMSZ	$\# Z > 5$
1	A	0.77	0/3109	1.38	17/4197 (0.4%)
1	B	0.78	0/3109	1.53	33/4197 (0.8%)
All	All	0.78	0/6218	1.46	50/8394 (0.6%)

Chiral center outliers are detected by calculating the chiral volume of a chiral center and verifying if the center is modelled as a planar moiety or with the opposite hand. A planarity outlier is detected by checking planarity of atoms in a peptide group, atoms in a mainchain group or atoms of a sidechain that are expected to be planar.

Mol	Chain	#Chirality outliers	#Planarity outliers
1	A	0	1

There are no bond length outliers.

All (50) bond angle outliers are listed below:

Mol	Chain	Res	Type	Atoms	Z	Observed($^{\circ}$)	Ideal($^{\circ}$)
1	B	153	ARG	NE-CZ-NH2	-21.98	109.31	120.30
1	B	101	ARG	NE-CZ-NH2	-20.53	110.03	120.30
1	A	101	ARG	NE-CZ-NH2	-19.10	110.75	120.30
1	B	355	ARG	NE-CZ-NH2	-18.66	110.97	120.30
1	B	355	ARG	NE-CZ-NH1	18.16	129.38	120.30
1	B	153	ARG	NE-CZ-NH1	18.15	129.38	120.30
1	B	101	ARG	NE-CZ-NH1	18.15	129.38	120.30
1	A	101	ARG	NE-CZ-NH1	16.22	128.41	120.30
1	A	238	MET	CG-SD-CE	15.06	124.29	100.20
1	B	238	MET	CG-SD-CE	12.25	119.80	100.20
1	A	251	ARG	NE-CZ-NH1	11.34	125.97	120.30
1	A	106	ARG	NE-CZ-NH2	-9.16	115.72	120.30
1	B	165	THR	N-CA-CB	-8.99	93.22	110.30
1	B	170	ILE	CB-CA-C	-8.35	94.91	111.60

Continued on next page...

Continued from previous page...

Mol	Chain	Res	Type	Atoms	Z	Observed(°)	Ideal(°)
1	B	270	VAL	N-CA-CB	-8.11	93.65	111.50
1	B	222	ARG	NE-CZ-NH1	7.88	124.24	120.30
1	B	434	LYS	CA-CB-CG	7.87	130.70	113.40
1	B	173	MET	CG-SD-CE	-7.62	88.01	100.20
1	A	269	ARG	NE-CZ-NH2	-7.09	116.75	120.30
1	A	267	THR	N-CA-CB	-6.97	97.05	110.30
1	A	251	ARG	NE-CZ-NH2	-6.69	116.95	120.30
1	B	267	THR	N-CA-CB	-6.68	97.60	110.30
1	B	356	MET	CG-SD-CE	-6.68	89.51	100.20
1	A	149	ARG	NE-CZ-NH1	6.61	123.61	120.30
1	B	185	ARG	NE-CZ-NH2	-6.59	117.00	120.30
1	B	153	ARG	CD-NE-CZ	6.31	132.43	123.60
1	B	251	ARG	NE-CZ-NH1	6.26	123.43	120.30
1	A	356	MET	CG-SD-CE	-6.22	90.25	100.20
1	A	173	MET	CG-SD-CE	-6.17	90.33	100.20
1	B	149	ARG	NE-CZ-NH2	-6.09	117.26	120.30
1	B	434	LYS	N-CA-CB	-6.01	99.79	110.60
1	A	355	ARG	NE-CZ-NH1	5.92	123.26	120.30
1	B	333	THR	N-CA-CB	-5.91	99.07	110.30
1	B	170	ILE	N-CA-CB	5.90	124.38	110.80
1	B	183	ASP	CB-CG-OD1	5.81	123.53	118.30
1	B	299	ARG	NE-CZ-NH1	5.78	123.19	120.30
1	B	378	LEU	CB-CG-CD1	-5.77	101.20	111.00
1	A	170	ILE	CB-CA-C	-5.76	100.07	111.60
1	B	149	ARG	NE-CZ-NH1	5.76	123.18	120.30
1	B	101	ARG	CB-CG-CD	-5.74	96.67	111.60
1	B	270	VAL	CB-CA-C	5.74	122.30	111.40
1	B	165	THR	CA-CB-CG2	-5.73	104.38	112.40
1	B	147	GLU	CA-CB-CG	5.68	125.91	113.40
1	B	251	ARG	NE-CZ-NH2	-5.60	117.50	120.30
1	A	358	SER	N-CA-CB	-5.41	102.39	110.50
1	A	355	ARG	NE-CZ-NH2	-5.31	117.64	120.30
1	A	381	ARG	NE-CZ-NH1	5.29	122.94	120.30
1	A	378	LEU	CB-CG-CD1	-5.25	102.07	111.00
1	B	418	LYS	CA-CB-CG	5.05	124.52	113.40
1	B	274	GLU	CB-CA-C	-5.02	100.36	110.40

There are no chirality outliers.

All (1) planarity outliers are listed below:

Mol	Chain	Res	Type	Group
1	A	445	TYR	Sidechain

5.2 Too-close contacts ⓘ

In the following table, the Non-H and H(model) columns list the number of non-hydrogen atoms and hydrogen atoms in the chain respectively. The H(added) column lists the number of hydrogen atoms added and optimized by MolProbity. The Clashes column lists the number of clashes within the asymmetric unit, whereas Symm-Clashes lists symmetry related clashes.

Mol	Chain	Non-H	H(model)	H(added)	Clashes	Symm-Clashes
1	A	3036	0	2923	25	0
1	B	3036	0	2923	17	0
2	A	14	0	13	0	0
2	B	14	0	13	0	0
3	A	1	0	0	0	0
3	B	2	0	0	0	0
4	A	28	0	26	0	0
4	B	28	0	26	0	0
5	A	258	0	0	2	0
5	B	239	0	0	2	0
All	All	6656	0	5924	39	0

The all-atom clashscore is defined as the number of clashes found per 1000 atoms (including hydrogen atoms). The all-atom clashscore for this structure is 3.

All (39) close contacts within the same asymmetric unit are listed below, sorted by their clash magnitude.

Atom-1	Atom-2	Interatomic distance (Å)	Clash overlap (Å)
1:B:192:VAL:HG22	1:B:201:ILE:HD13	1.58	0.85
1:A:192:VAL:HG22	1:A:201:ILE:HD13	1.59	0.82
1:B:165:THR:HG22	1:B:168:ASN:HB2	1.66	0.77
1:B:165:THR:HG22	1:B:168:ASN:H	1.65	0.61
1:A:170:ILE:HD12	5:B:662:HOH:O	2.02	0.58
1:B:201:ILE:HG12	1:B:221:LEU:HD21	1.90	0.54
1:A:320:THR:HB	1:A:393:LEU:HD22	1.90	0.54
1:A:434:LYS:HE3	1:A:434:LYS:H	1.73	0.53
1:A:134:TYR:O	1:B:101:ARG:HD3	2.09	0.53
1:A:272:HIS:HB2	5:A:676:HOH:O	2.08	0.52
1:B:216:TYR:CZ	1:B:251:ARG:HD3	2.47	0.51
1:A:284:LYS:HE3	1:A:305:ASN:HD21	1.77	0.49
1:B:192:VAL:CG2	1:B:201:ILE:HD13	2.37	0.48
1:B:314:ARG:HB2	1:B:387:TRP:CD1	2.48	0.48
1:A:314:ARG:HB2	1:A:387:TRP:CD1	2.49	0.48
1:A:200:LEU:HB2	1:B:454:LEU:HD23	1.96	0.47
1:A:269:ARG:HH21	1:A:339:ASN:HD21	1.63	0.47

Continued on next page...

Continued from previous page...

Atom-1	Atom-2	Interatomic distance (Å)	Clash overlap (Å)
1:A:351:PHE:HA	1:A:363:TRP:O	2.14	0.46
1:A:379:TYR:HB3	1:A:393:LEU:HB3	1.98	0.46
1:A:302:VAL:HG22	1:A:313:ILE:HG12	1.99	0.45
1:B:320:THR:HB	1:B:393:LEU:HD22	1.98	0.45
1:B:347:ILE:HD12	1:B:373:ARG:HG2	1.98	0.45
1:A:92:GLN:HE22	1:A:454:LEU:H	1.63	0.45
1:A:167:GLU:OE2	1:B:165:THR:HG21	2.17	0.45
1:A:347:ILE:HD12	1:A:373:ARG:HG2	1.99	0.44
1:B:165:THR:CG2	1:B:168:ASN:H	2.29	0.44
1:A:133:HIS:HE1	5:A:703:HOH:O	2.01	0.43
1:B:325:PRO:HA	1:B:370:LYS:O	2.19	0.42
1:A:231:ILE:HB	1:A:280:PHE:CZ	2.53	0.42
1:A:287:GLU:HA	1:A:302:VAL:O	2.19	0.42
1:A:78:GLU:HG2	1:A:79:TRP:O	2.19	0.42
1:A:114:ILE:O	1:A:439:SER:HA	2.20	0.42
1:A:170:ILE:HG23	5:B:662:HOH:O	2.20	0.41
1:B:121:CYS:HA	1:B:126:CYS:HA	2.01	0.41
1:B:186:GLU:HB3	1:B:205:TYR:CZ	2.54	0.41
1:B:272:HIS:CD2	1:B:293:ASN:H	2.39	0.41
1:A:92:GLN:NE2	1:A:454:LEU:H	2.18	0.40
1:A:434:LYS:H	1:A:434:LYS:CE	2.34	0.40
1:A:230:CYS:HA	1:A:234:ASP:O	2.22	0.40

There are no symmetry-related clashes.

5.3 Torsion angles [i](#)

5.3.1 Protein backbone [i](#)

In the following table, the Percentiles column shows the percent Ramachandran outliers of the chain as a percentile score with respect to all X-ray entries followed by that with respect to entries of similar resolution.

The Analysed column shows the number of residues for which the backbone conformation was analysed, and the total number of residues.

Mol	Chain	Analysed	Favoured	Allowed	Outliers	Percentiles	
1	A	388/390 (100%)	374 (96%)	14 (4%)	0	100	100
1	B	388/390 (100%)	376 (97%)	11 (3%)	1 (0%)	46	35
All	All	776/780 (100%)	750 (97%)	25 (3%)	1 (0%)	56	46

All (1) Ramachandran outliers are listed below:

Mol	Chain	Res	Type
1	B	220	ILE

5.3.2 Protein sidechains ⓘ

In the following table, the Percentiles column shows the percent sidechain outliers of the chain as a percentile score with respect to all X-ray entries followed by that with respect to entries of similar resolution.

The Analysed column shows the number of residues for which the sidechain conformation was analysed, and the total number of residues.

Mol	Chain	Analysed	Rotameric	Outliers	Percentiles	
1	A	324/324 (100%)	305 (94%)	19 (6%)	24	12
1	B	324/324 (100%)	301 (93%)	23 (7%)	18	8
All	All	648/648 (100%)	606 (94%)	42 (6%)	21	10

All (42) residues with a non-rotameric sidechain are listed below:

Mol	Chain	Res	Type
1	A	76	GLU
1	A	77	PRO
1	A	78	GLU
1	A	80	THR
1	A	101	ARG
1	A	131	LEU
1	A	134	TYR
1	A	152	LEU
1	A	238	MET
1	A	245	SER
1	A	267	THR
1	A	294	SER
1	A	306	VAL
1	A	327	PRO
1	A	378	LEU
1	A	393	LEU
1	A	434	LYS
1	A	454	LEU
1	A	455	TRP
1	B	80	THR
1	B	95	LEU
1	B	101	ARG

Continued on next page...

Continued from previous page...

Mol	Chain	Res	Type
1	B	131	LEU
1	B	134	TYR
1	B	152	LEU
1	B	165	THR
1	B	168	ASN
1	B	170	ILE
1	B	198	ASN
1	B	228	CYS
1	B	238	MET
1	B	267	THR
1	B	270	VAL
1	B	284	LYS
1	B	327	PRO
1	B	333	THR
1	B	378	LEU
1	B	381	ARG
1	B	393	LEU
1	B	435	LYS
1	B	454	LEU
1	B	455	TRP

Some sidechains can be flipped to improve hydrogen bonding and reduce clashes. All (8) such sidechains are listed below:

Mol	Chain	Res	Type
1	A	92	GLN
1	A	133	HIS
1	A	168	ASN
1	A	339	ASN
1	B	133	HIS
1	B	143	ASN
1	B	168	ASN
1	B	229	ASN

5.3.3 RNA ⓘ

There are no RNA molecules in this entry.

5.4 Non-standard residues in protein, DNA, RNA chains ⓘ

There are no non-standard protein/DNA/RNA residues in this entry.

5.5 Carbohydrates ⓘ

There are no carbohydrates in this entry.

5.6 Ligand geometry ⓘ

Of 7 ligands modelled in this entry, 3 are monoatomic - leaving 4 for Mogul analysis.

In the following table, the Counts columns list the number of bonds (or angles) for which Mogul statistics could be retrieved, the number of bonds (or angles) that are observed in the model and the number of bonds (or angles) that are defined in the chemical component dictionary. The Link column lists molecule types, if any, to which the group is linked. The Z score for a bond length (or angle) is the number of standard deviations the observed value is removed from the expected value. A bond length (or angle) with $|Z| > 2$ is considered an outlier worth inspection. RMSZ is the root-mean-square of all Z scores of the bond lengths (or angles).

Mol	Type	Chain	Res	Link	Bond lengths			Bond angles		
					Counts	RMSZ	$\# Z > 2$	Counts	RMSZ	$\# Z > 2$
2	NAG	A	1	1	14,14,15	0.92	0	15,19,21	1.82	3 (20%)
4	DPC	A	466	-	25,29,29	2.97	3 (12%)	28,39,39	1.14	2 (7%)
2	NAG	B	1	1	14,14,15	0.94	0	15,19,21	1.07	1 (6%)
4	DPC	B	466	-	25,29,29	1.21	2 (8%)	28,39,39	0.90	0

In the following table, the Chirals column lists the number of chiral outliers, the number of chiral centers analysed, the number of these observed in the model and the number defined in the chemical component dictionary. Similar counts are reported in the Torsion and Rings columns. '-' means no outliers of that kind were identified.

Mol	Type	Chain	Res	Link	Chirals	Torsions	Rings
2	NAG	A	1	1	-	0/6/23/26	0/1/1/1
4	DPC	A	466	-	-	0/19/40/40	0/2/2/2
2	NAG	B	1	1	-	0/6/23/26	0/1/1/1
4	DPC	B	466	-	-	0/19/40/40	0/2/2/2

All (5) bond length outliers are listed below:

Mol	Chain	Res	Type	Atoms	Z	Observed(Å)	Ideal(Å)
4	A	466	DPC	O7-C7	-13.68	0.97	1.22
4	B	466	DPC	O6-C6	-3.86	1.40	1.46
4	A	466	DPC	O6-C6	-3.66	1.40	1.46
4	B	466	DPC	O6-C2	-2.85	1.32	1.37
4	A	466	DPC	O6-C2	-2.11	1.33	1.37

All (6) bond angle outliers are listed below:

Mol	Chain	Res	Type	Atoms	Z	Observed(°)	Ideal(°)
4	A	466	DPC	O7-C7-C6	-2.68	112.58	119.42
2	B	1	NAG	C1-O5-C5	2.06	114.87	112.25
2	A	1	NAG	C1-O5-C5	2.44	115.35	112.25
2	A	1	NAG	O3-C3-C2	2.91	114.88	109.11
4	A	466	DPC	O7-C7-N8	4.05	126.72	121.66
2	A	1	NAG	C2-N2-C7	4.16	128.38	123.04

There are no chirality outliers.

There are no torsion outliers.

There are no ring outliers.

No monomer is involved in short contacts.

5.7 Other polymers [i](#)

There are no such residues in this entry.

5.8 Polymer linkage issues [i](#)

There are no chain breaks in this entry.

6 Fit of model and data [i](#)

6.1 Protein, DNA and RNA chains [i](#)

EDS was not executed - this section will therefore be empty.

6.2 Non-standard residues in protein, DNA, RNA chains [i](#)

EDS was not executed - this section will therefore be empty.

6.3 Carbohydrates [i](#)

EDS was not executed - this section will therefore be empty.

6.4 Ligands [i](#)

EDS was not executed - this section will therefore be empty.

6.5 Other polymers [i](#)

EDS was not executed - this section will therefore be empty.