



# wwPDB X-ray Structure Validation Summary Report ⓘ

Feb 1, 2016 – 07:16 AM GMT

PDB ID : 3A50  
Title : Structure of cytochrome P450 Vdh mutant (Vdh-K1) obtained by directed evolution with bound vitamin D3  
Authors : Yasutake, Y.; Fujii, Y.; Cheon, W.K.; Arisawa, A.; Tamura, T.  
Deposited on : 2009-07-24  
Resolution : 2.05 Å(reported)

This is a wwPDB X-ray Structure Validation Summary Report for a publicly released PDB entry.  
We welcome your comments at [validation@mail.wwpdb.org](mailto:validation@mail.wwpdb.org)  
A user guide is available at  
<http://wwpdb.org/validation/2016/XrayValidationReportHelp>  
with specific help available everywhere you see the ⓘ symbol.

---

The following versions of software and data (see [references ⓘ](#)) were used in the production of this report:

MolProbity : 4.02b-467  
Mogul : 1.7 (RC4), CSD as536be (2015)  
Xtriage (Phenix) : 1.9-1692  
EDS : rb-20026688  
Percentile statistics : 20151230.v01 (using entries in the PDB archive December 30th 2015)  
Refmac : 5.8.0135  
CCP4 : 6.5.0  
Ideal geometry (proteins) : Engh & Huber (2001)  
Ideal geometry (DNA, RNA) : Parkinson et al. (1996)  
Validation Pipeline (wwPDB-VP) : trunk26865

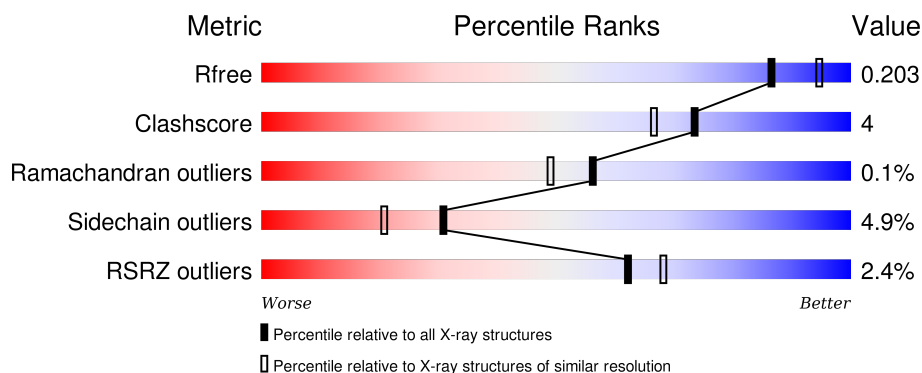
# 1 Overall quality at a glance ⓘ

The following experimental techniques were used to determine the structure:

## *X-RAY DIFFRACTION*

The reported resolution of this entry is 2.05 Å.

Percentile scores (ranging between 0-100) for global validation metrics of the entry are shown in the following graphic. The table shows the number of entries on which the scores are based.



Metric	Whole archive (#Entries)	Similar resolution (#Entries, resolution range(Å))
$R_{free}$	91344	1192 (2.04-2.04)
Clashscore	102246	1269 (2.04-2.04)
Ramachandran outliers	100387	1258 (2.04-2.04)
Sidechain outliers	100360	1258 (2.04-2.04)
RSRZ outliers	91569	1194 (2.04-2.04)

The table below summarises the geometric issues observed across the polymeric chains and their fit to the electron density. The red, orange, yellow and green segments on the lower bar indicate the fraction of residues that contain outliers for  $\geq 3$ , 2, 1 and 0 types of geometric quality criteria. A grey segment represents the fraction of residues that are not modelled. The numeric value for each fraction is indicated below the corresponding segment, with a dot representing fractions  $\leq 5\%$ . The upper red bar (where present) indicates the fraction of residues that have poor fit to the electron density. The numeric value is given above the bar.

Mol	Chain	Length	Quality of chain
1	A	411	<div> <div style="width: 91%;"></div> <div style="width: 6%;"></div> <div style="width: 3%;"></div> </div> 91% 6% ..
1	B	411	<div> <div style="width: 89%;"></div> <div style="width: 8%;"></div> <div style="width: 3%;"></div> </div> 89% 8% .
1	C	411	<div> <div style="width: 84%;"></div> <div style="width: 12%;"></div> <div style="width: 4%;"></div> </div> 84% 12% ..
1	D	411	<div> <div style="width: 85%;"></div> <div style="width: 11%;"></div> <div style="width: 4%;"></div> </div> 85% 11% ..
1	E	411	<div> <div style="width: 88%;"></div> <div style="width: 8%;"></div> <div style="width: 4%;"></div> </div> 88% 8% ..

The following table lists non-polymeric compounds, carbohydrate monomers and non-standard residues in protein, DNA, RNA chains that are outliers for geometric or electron-density-fit criteria:

Mol	Type	Chain	Res	Chirality	Geometry	Clashes	Electron density
3	VD3	A	2001	-	-	-	X
3	VD3	B	2001	-	-	-	X
3	VD3	C	2001	-	-	-	X
3	VD3	D	2001	-	-	-	X
3	VD3	E	2001	-	-	-	X
4	ACT	E	4005	-	-	-	X
6	GOL	A	3002	-	-	-	X

## 2 Entry composition

There are 7 unique types of molecules in this entry. The entry contains 16977 atoms, of which 0 are hydrogens and 0 are deuteriums.

In the tables below, the ZeroOcc column contains the number of atoms modelled with zero occupancy, the AltConf column contains the number of residues with at least one atom in alternate conformation and the Trace column contains the number of residues modelled with at most 2 atoms.

- Molecule 1 is a protein called Vitamin D hydroxylase.

Mol	Chain	Residues	Atoms					ZeroOcc	AltConf	Trace
1	A	402	Total	C	N	O	S	0	0	0
			3113	1958	549	589	17			
1	B	402	Total	C	N	O	S	0	0	0
			3113	1958	549	589	17			
1	C	401	Total	C	N	O	S	0	0	0
			3108	1955	548	588	17			
1	D	401	Total	C	N	O	S	0	0	0
			3108	1955	548	588	17			
1	E	401	Total	C	N	O	S	0	0	0
			3108	1955	548	588	17			

There are 60 discrepancies between the modelled and reference sequences:

Chain	Residue	Modelled	Actual	Comment	Reference
A	70	ARG	THR	ENGINEERED MUTATION	UNP C4B644
A	156	LEU	VAL	ENGINEERED MUTATION	UNP C4B644
A	216	MET	GLU	ENGINEERED MUTATION	UNP C4B644
A	384	ARG	GLU	ENGINEERED MUTATION	UNP C4B644
A	404	LEU	-	EXPRESSION TAG	UNP C4B644
A	405	GLU	-	EXPRESSION TAG	UNP C4B644
A	406	HIS	-	EXPRESSION TAG	UNP C4B644
A	407	HIS	-	EXPRESSION TAG	UNP C4B644
A	408	HIS	-	EXPRESSION TAG	UNP C4B644
A	409	HIS	-	EXPRESSION TAG	UNP C4B644
A	410	HIS	-	EXPRESSION TAG	UNP C4B644
A	411	HIS	-	EXPRESSION TAG	UNP C4B644
B	70	ARG	THR	ENGINEERED MUTATION	UNP C4B644
B	156	LEU	VAL	ENGINEERED MUTATION	UNP C4B644
B	216	MET	GLU	ENGINEERED MUTATION	UNP C4B644
B	384	ARG	GLU	ENGINEERED MUTATION	UNP C4B644
B	404	LEU	-	EXPRESSION TAG	UNP C4B644
B	405	GLU	-	EXPRESSION TAG	UNP C4B644
B	406	HIS	-	EXPRESSION TAG	UNP C4B644

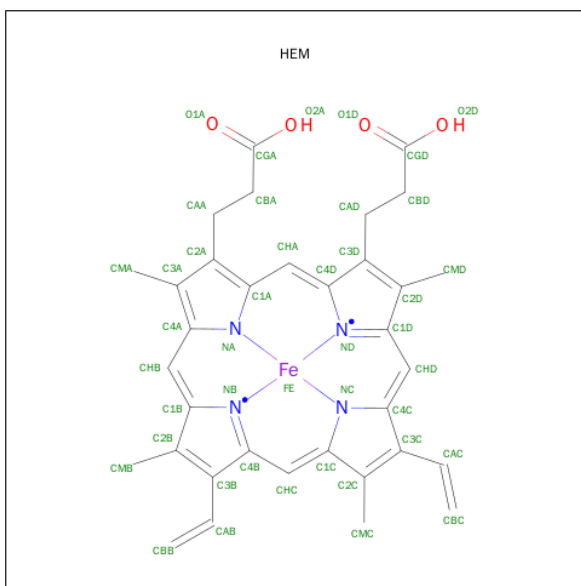
*Continued on next page...*

*Continued from previous page...*

Chain	Residue	Modelled	Actual	Comment	Reference
B	407	HIS	-	EXPRESSION TAG	UNP C4B644
B	408	HIS	-	EXPRESSION TAG	UNP C4B644
B	409	HIS	-	EXPRESSION TAG	UNP C4B644
B	410	HIS	-	EXPRESSION TAG	UNP C4B644
B	411	HIS	-	EXPRESSION TAG	UNP C4B644
C	70	ARG	THR	ENGINEERED MUTATION	UNP C4B644
C	156	LEU	VAL	ENGINEERED MUTATION	UNP C4B644
C	216	MET	GLU	ENGINEERED MUTATION	UNP C4B644
C	384	ARG	GLU	ENGINEERED MUTATION	UNP C4B644
C	404	LEU	-	EXPRESSION TAG	UNP C4B644
C	405	GLU	-	EXPRESSION TAG	UNP C4B644
C	406	HIS	-	EXPRESSION TAG	UNP C4B644
C	407	HIS	-	EXPRESSION TAG	UNP C4B644
C	408	HIS	-	EXPRESSION TAG	UNP C4B644
C	409	HIS	-	EXPRESSION TAG	UNP C4B644
C	410	HIS	-	EXPRESSION TAG	UNP C4B644
C	411	HIS	-	EXPRESSION TAG	UNP C4B644
D	70	ARG	THR	ENGINEERED MUTATION	UNP C4B644
D	156	LEU	VAL	ENGINEERED MUTATION	UNP C4B644
D	216	MET	GLU	ENGINEERED MUTATION	UNP C4B644
D	384	ARG	GLU	ENGINEERED MUTATION	UNP C4B644
D	404	LEU	-	EXPRESSION TAG	UNP C4B644
D	405	GLU	-	EXPRESSION TAG	UNP C4B644
D	406	HIS	-	EXPRESSION TAG	UNP C4B644
D	407	HIS	-	EXPRESSION TAG	UNP C4B644
D	408	HIS	-	EXPRESSION TAG	UNP C4B644
D	409	HIS	-	EXPRESSION TAG	UNP C4B644
D	410	HIS	-	EXPRESSION TAG	UNP C4B644
D	411	HIS	-	EXPRESSION TAG	UNP C4B644
E	70	ARG	THR	ENGINEERED MUTATION	UNP C4B644
E	156	LEU	VAL	ENGINEERED MUTATION	UNP C4B644
E	216	MET	GLU	ENGINEERED MUTATION	UNP C4B644
E	384	ARG	GLU	ENGINEERED MUTATION	UNP C4B644
E	404	LEU	-	EXPRESSION TAG	UNP C4B644
E	405	GLU	-	EXPRESSION TAG	UNP C4B644
E	406	HIS	-	EXPRESSION TAG	UNP C4B644
E	407	HIS	-	EXPRESSION TAG	UNP C4B644
E	408	HIS	-	EXPRESSION TAG	UNP C4B644
E	409	HIS	-	EXPRESSION TAG	UNP C4B644
E	410	HIS	-	EXPRESSION TAG	UNP C4B644
E	411	HIS	-	EXPRESSION TAG	UNP C4B644

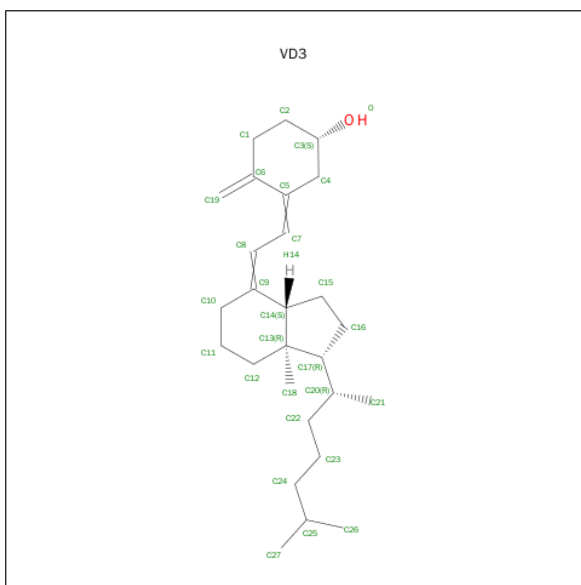
- Molecule 2 is PROTOPORPHYRIN IX CONTAINING FE (three-letter code: HEM) (for-

mula: C<sub>34</sub>H<sub>32</sub>FeN<sub>4</sub>O<sub>4</sub>).



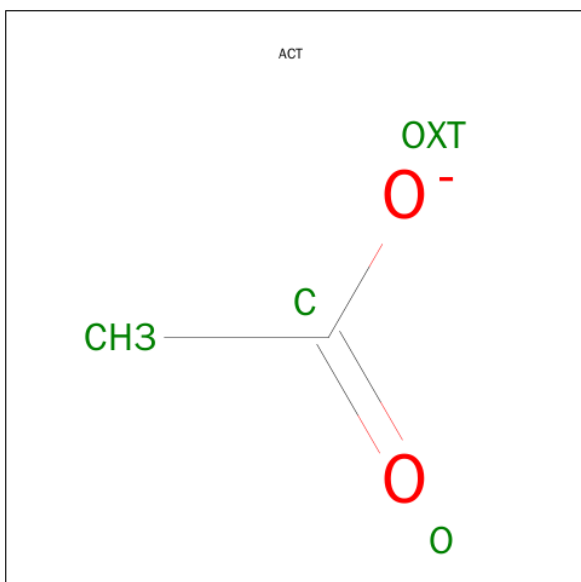
Mol	Chain	Residues	Atoms					ZeroOcc	AltConf
2	A	1	Total 43	C 34	Fe 1	N 4	O 4	0	0
2	B	1	Total 43	C 34	Fe 1	N 4	O 4	0	0
2	C	1	Total 43	C 34	Fe 1	N 4	O 4	0	0
2	D	1	Total 43	C 34	Fe 1	N 4	O 4	0	0
2	E	1	Total 43	C 34	Fe 1	N 4	O 4	0	0

- Molecule 3 is (1S,3Z)-3-[(2E)-2-[(1R,3AR,7AS)-7A-METHYL-1-[(2R)-6-METHYLHEPTA N-2-YL]-2,3,3A,5,6,7-HEXAHYDRO-1H-INDEN-4-YLIDENE]ETHYLIDENE]-4-METHYL IDENE-CYCLOHEXAN-1-OL (three-letter code: VD3) (formula: C<sub>27</sub>H<sub>44</sub>O).



Mol	Chain	Residues	Atoms			ZeroOcc	AltConf
3	A	1	Total	C	O	0	0
			28	27	1		
3	B	1	Total	C	O	0	0
			28	27	1		
3	C	1	Total	C	O	0	0
			28	27	1		
3	D	1	Total	C	O	0	0
			28	27	1		
3	E	1	Total	C	O	0	0
			28	27	1		

- Molecule 4 is ACETATE ION (three-letter code: ACT) (formula:  $\text{C}_2\text{H}_3\text{O}_2$ ).

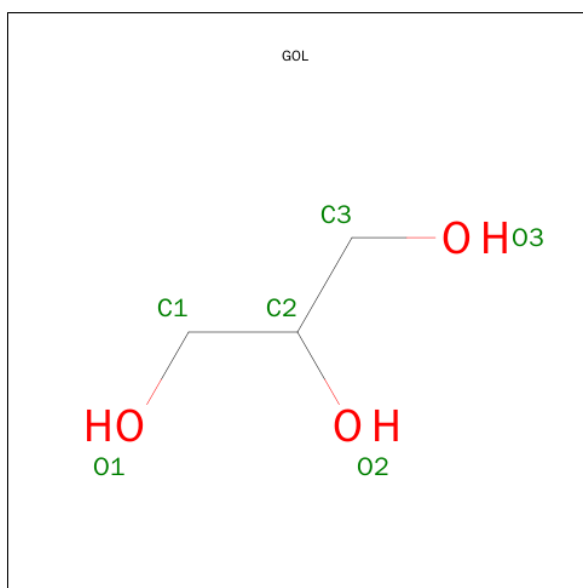


Mol	Chain	Residues	Atoms	ZeroOcc	AltConf
4	A	1	Total C O 4 2 2	0	0
4	C	1	Total C O 4 2 2	0	0
4	C	1	Total C O 4 2 2	0	0
4	D	1	Total C O 4 2 2	0	0
4	E	1	Total C O 4 2 2	0	0
4	E	1	Total C O 4 2 2	0	0

- Molecule 5 is CALCIUM ION (three-letter code: CA) (formula: Ca).

Mol	Chain	Residues	Atoms	ZeroOcc	AltConf
5	A	3	Total Ca 3 3	0	0
5	D	1	Total Ca 1 1	0	0
5	C	1	Total Ca 1 1	0	0
5	E	1	Total Ca 1 1	0	0

- Molecule 6 is GLYCEROL (three-letter code: GOL) (formula: C<sub>3</sub>H<sub>8</sub>O<sub>3</sub>).





Mol	Chain	Residues	Atoms			ZeroOcc	AltConf
6	A	1	Total	C	O	0	0
			6	3	3		
6	A	1	Total	C	O	0	0
			6	3	3		

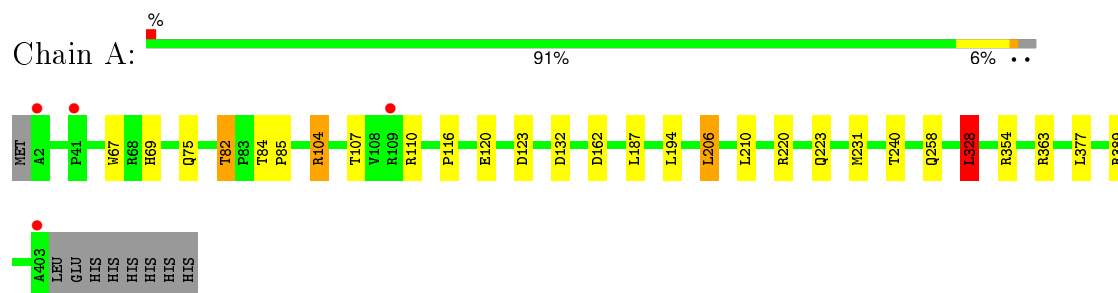
- Molecule 7 is water.

Mol	Chain	Residues	Atoms		ZeroOcc	AltConf
7	A	303	Total	O	0	0
			303	303		
7	B	174	Total	O	0	0
			174	174		
7	C	150	Total	O	0	0
			150	150		
7	D	198	Total	O	0	0
			198	198		
7	E	205	Total	O	0	0
			205	205		

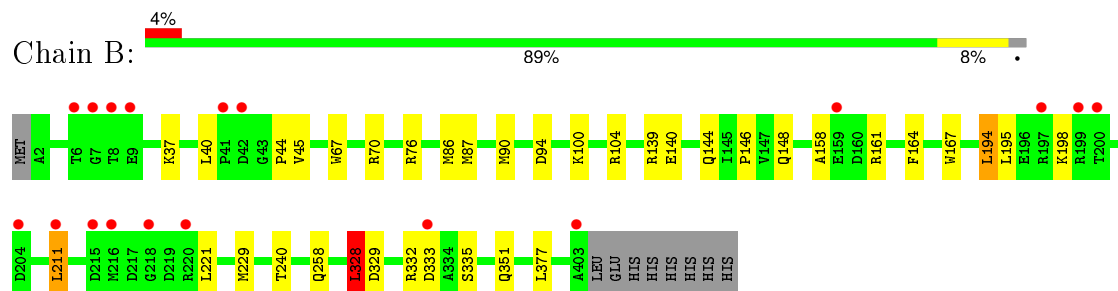
### 3 Residue-property plots [i](#)

These plots are drawn for all protein, RNA and DNA chains in the entry. The first graphic for a chain summarises the proportions of errors displayed in the second graphic. The second graphic shows the sequence view annotated by issues in geometry and electron density. Residues are color-coded according to the number of geometric quality criteria for which they contain at least one outlier: green = 0, yellow = 1, orange = 2 and red = 3 or more. A red dot above a residue indicates a poor fit to the electron density ( $RSRZ > 2$ ). Stretches of 2 or more consecutive residues without any outlier are shown as a green connector. Residues present in the sample, but not in the model, are shown in grey.

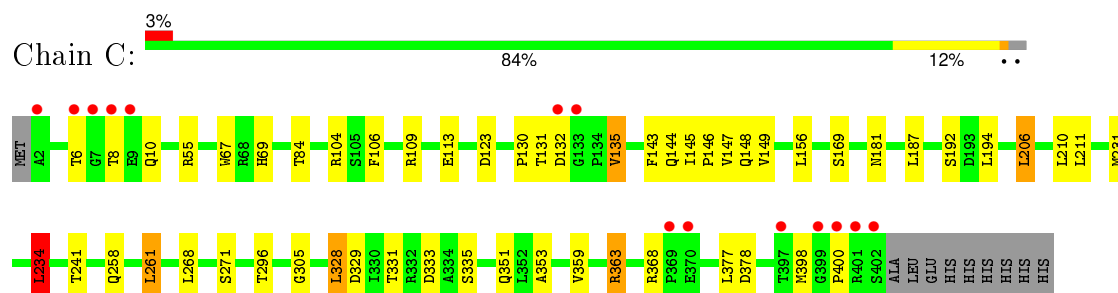
#### • Molecule 1: Vitamin D hydroxylase



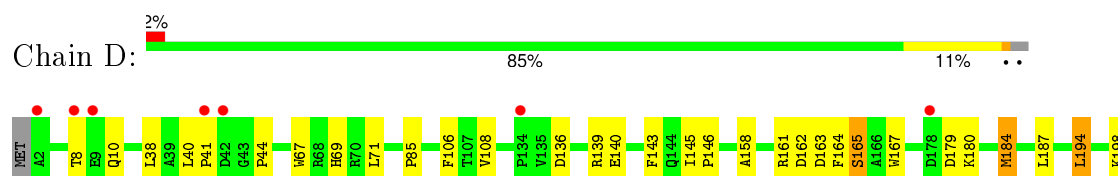
#### • Molecule 1: Vitamin D hydroxylase



#### • Molecule 1: Vitamin D hydroxylase

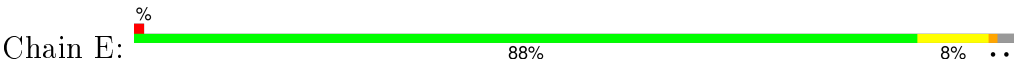


#### • Molecule 1: Vitamin D hydroxylase





● Molecule 1: Vitamin D hydroxylase



## 4 Data and refinement statistics

Property	Value	Source
Space group	P 21 21 21	Depositor
Cell constants a, b, c, $\alpha$ , $\beta$ , $\gamma$	77.38Å 172.27Å 189.06Å 90.00° 90.00° 90.00°	Depositor
Resolution (Å)	49.09 – 2.05 46.11 – 2.05	Depositor EDS
% Data completeness (in resolution range)	99.9 (49.09-2.05) 99.9 (46.11-2.05)	Depositor EDS
$R_{merge}$	0.11	Depositor
$R_{sym}$	(Not available)	Depositor
$\langle I/\sigma(I) \rangle$ <sup>1</sup>	3.02 (at 2.05Å)	Xtriage
Refinement program	REFMAC 5.2.0019	Depositor
R, $R_{free}$	0.201 , 0.240 0.203 , 0.203	Depositor DCC
$R_{free}$ test set	7920 reflections (5.26%)	DCC
Wilson B-factor (Å <sup>2</sup> )	26.7	Xtriage
Anisotropy	0.223	Xtriage
Bulk solvent $k_{sol}$ (e/Å <sup>3</sup> ), $B_{sol}$ (Å <sup>2</sup> )	0.36 , 46.7	EDS
Estimated twinning fraction	No twinning to report.	Xtriage
L-test for twinning <sup>2</sup>	$\langle  L  \rangle = 0.50$ , $\langle L^2 \rangle = 0.33$	Xtriage
Outliers	0 of 158604 reflections	Xtriage
$F_o, F_c$ correlation	0.94	EDS
Total number of atoms	16977	wwPDB-VP
Average B, all atoms (Å <sup>2</sup> )	28.0	wwPDB-VP

Xtriage's analysis on translational NCS is as follows: *The largest off-origin peak in the Patterson function is 2.74% of the height of the origin peak. No significant pseudotranslation is detected.*

<sup>1</sup>Intensities estimated from amplitudes.

<sup>2</sup>Theoretical values of  $\langle |L| \rangle$ ,  $\langle L^2 \rangle$  for acentric reflections are 0.5, 0.375 respectively for untwinned datasets, and 0.333, 0.2 for perfectly twinned datasets.

## 5 Model quality [i](#)

### 5.1 Standard geometry [i](#)

Bond lengths and bond angles in the following residue types are not validated in this section: GOL, VD3, CA, HEM, ACT

The Z score for a bond length (or angle) is the number of standard deviations the observed value is removed from the expected value. A bond length (or angle) with  $|Z| > 5$  is considered an outlier worth inspection. RMSZ is the root-mean-square of all Z scores of the bond lengths (or angles).

Mol	Chain	Bond lengths		Bond angles	
		RMSZ	# Z  >5	RMSZ	# Z  >5
1	A	0.67	0/3179	0.72	1/4325 (0.0%)
1	B	0.57	0/3179	0.67	1/4325 (0.0%)
1	C	0.59	0/3174	0.69	1/4318 (0.0%)
1	D	0.59	0/3174	0.70	1/4318 (0.0%)
1	E	0.59	0/3174	0.71	3/4318 (0.1%)
All	All	0.60	0/15880	0.70	7/21604 (0.0%)

There are no bond length outliers.

The worst 5 of 7 bond angle outliers are listed below:

Mol	Chain	Res	Type	Atoms	Z	Observed(°)	Ideal(°)
1	E	234	LEU	CA-CB-CG	8.69	135.29	115.30
1	C	234	LEU	CA-CB-CG	7.58	132.74	115.30
1	E	234	LEU	CB-CG-CD1	5.49	120.34	111.00
1	B	328	LEU	CA-CB-CG	5.36	127.63	115.30
1	A	328	LEU	CA-CB-CG	5.19	127.23	115.30

There are no chirality outliers.

There are no planarity outliers.

### 5.2 Too-close contacts [i](#)

In the following table, the Non-H and H(model) columns list the number of non-hydrogen atoms and hydrogen atoms in the chain respectively. The H(added) column lists the number of hydrogen atoms added and optimized by MolProbity. The Clashes column lists the number of clashes within the asymmetric unit, whereas Symm-Clashes lists symmetry related clashes.

Mol	Chain	Non-H	H(model)	H(added)	Clashes	Symm-Clashes
1	A	3113	0	3095	18	0

*Continued on next page...*

*Continued from previous page...*

Mol	Chain	Non-H	H(model)	H(added)	Clashes	Symm-Clashes
1	B	3113	0	3095	24	0
1	C	3108	0	3090	34	0
1	D	3108	0	3090	25	0
1	E	3108	0	3090	21	0
2	A	43	0	30	1	0
2	B	43	0	30	0	0
2	C	43	0	30	7	0
2	D	43	0	30	1	0
2	E	43	0	30	0	0
3	A	28	0	44	1	0
3	B	28	0	44	6	0
3	C	28	0	44	2	0
3	D	28	0	44	4	0
3	E	28	0	43	6	0
4	A	4	0	3	0	0
4	C	8	0	6	0	0
4	D	4	0	3	0	0
4	E	8	0	6	0	0
5	A	3	0	0	0	0
5	C	1	0	0	0	0
5	D	1	0	0	0	0
5	E	1	0	0	0	0
6	A	12	0	14	0	0
7	A	303	0	0	3	0
7	B	174	0	0	1	0
7	C	150	0	0	2	0
7	D	198	0	0	1	0
7	E	205	0	0	1	0
All	All	16977	0	15861	129	0

The all-atom clashscore is defined as the number of clashes found per 1000 atoms (including hydrogen atoms). The all-atom clashscore for this structure is 4.

The worst 5 of 129 close contacts within the same asymmetric unit are listed below, sorted by their clash magnitude.

Atom-1	Atom-2	Interatomic distance (Å)	Clash overlap (Å)
1:A:82:THR:HG21	1:A:85:PRO:HA	1.51	0.90
1:E:187:LEU:HD13	1:E:231:MET:HG3	1.60	0.83
1:C:258:GLN:HG3	1:C:328:LEU:HD13	1.63	0.80
1:C:353:ALA:HB1	2:C:412:HEM:CBB	2.15	0.77
3:B:2001:VD3:H212	3:B:2001:VD3:H121	1.69	0.75

There are no symmetry-related clashes.

## 5.3 Torsion angles [i](#)

### 5.3.1 Protein backbone [i](#)

In the following table, the Percentiles column shows the percent Ramachandran outliers of the chain as a percentile score with respect to all X-ray entries followed by that with respect to entries of similar resolution.

The Analysed column shows the number of residues for which the backbone conformation was analysed, and the total number of residues.

Mol	Chain	Analysed	Favoured	Allowed	Outliers	Percentiles	
1	A	400/411 (97%)	388 (97%)	12 (3%)	0	100	100
1	B	400/411 (97%)	386 (96%)	14 (4%)	0	100	100
1	C	399/411 (97%)	386 (97%)	13 (3%)	0	100	100
1	D	399/411 (97%)	385 (96%)	13 (3%)	1 (0%)	46	36
1	E	399/411 (97%)	388 (97%)	11 (3%)	0	100	100
All	All	1997/2055 (97%)	1933 (97%)	63 (3%)	1 (0%)	56	49

All (1) Ramachandran outliers are listed below:

Mol	Chain	Res	Type
1	D	8	THR

### 5.3.2 Protein sidechains [i](#)

In the following table, the Percentiles column shows the percent sidechain outliers of the chain as a percentile score with respect to all X-ray entries followed by that with respect to entries of similar resolution.

The Analysed column shows the number of residues for which the sidechain conformation was analysed, and the total number of residues.

Mol	Chain	Analysed	Rotameric	Outliers	Percentiles	
1	A	334/343 (97%)	321 (96%)	13 (4%)	39	30
1	B	334/343 (97%)	323 (97%)	11 (3%)	45	37
1	C	334/343 (97%)	312 (93%)	22 (7%)	21	11
1	D	334/343 (97%)	315 (94%)	19 (6%)	25	15

*Continued on next page...*

*Continued from previous page...*

Mol	Chain	Analysed	Rotameric	Outliers	Percentiles	
1	E	334/343 (97%)	317 (95%)	17 (5%)	29	19
All	All	1670/1715 (97%)	1588 (95%)	82 (5%)	31	21

5 of 82 residues with a non-rotameric sidechain are listed below:

Mol	Chain	Res	Type
1	C	234	LEU
1	C	378	ASP
1	E	206	LEU
1	C	261	LEU
1	C	333	ASP

Some sidechains can be flipped to improve hydrogen bonding and reduce clashes. 5 of 15 such sidechains are listed below:

Mol	Chain	Res	Type
1	C	238	HIS
1	C	351	GLN
1	E	69	HIS
1	C	69	HIS
1	E	10	GLN

### 5.3.3 RNA [i](#)

There are no RNA molecules in this entry.

## 5.4 Non-standard residues in protein, DNA, RNA chains [i](#)

There are no non-standard protein/DNA/RNA residues in this entry.

## 5.5 Carbohydrates [i](#)

There are no carbohydrates in this entry.

## 5.6 Ligand geometry [i](#)

Of 24 ligands modelled in this entry, 6 are monoatomic - leaving 18 for Mogul analysis.

In the following table, the Counts columns list the number of bonds (or angles) for which Mogul statistics could be retrieved, the number of bonds (or angles) that are observed in the model and



the number of bonds (or angles) that are defined in the chemical component dictionary. The Link column lists molecule types, if any, to which the group is linked. The Z score for a bond length (or angle) is the number of standard deviations the observed value is removed from the expected value. A bond length (or angle) with  $|Z| > 2$  is considered an outlier worth inspection. RMSZ is the root-mean-square of all Z scores of the bond lengths (or angles).

Mol	Type	Chain	Res	Link	Bond lengths			Bond angles		
					Counts	RMSZ	# Z  > 2	Counts	RMSZ	# Z  > 2
3	VD3	A	2001	-	28,30,30	0.60	0	36,43,43	1.86	8 (22%)
6	GOL	A	3001	-	5,5,5	0.47	0	5,5,5	0.38	0
6	GOL	A	3002	5	5,5,5	0.27	0	5,5,5	1.82	1 (20%)
4	ACT	A	4006	-	1,3,3	1.78	0	0,3,3	0.00	-
2	HEM	A	412	1	30,50,50	2.45	12 (40%)	24,82,82	2.51	14 (58%)
3	VD3	B	2001	-	28,30,30	0.91	1 (3%)	36,43,43	1.79	9 (25%)
2	HEM	B	412	1	30,50,50	2.23	9 (30%)	24,82,82	2.40	10 (41%)
3	VD3	C	2001	-	28,30,30	0.87	1 (3%)	36,43,43	1.82	7 (19%)
4	ACT	C	4004	5	1,3,3	1.59	0	0,3,3	0.00	-
4	ACT	C	4007	-	1,3,3	1.59	0	0,3,3	0.00	-
2	HEM	C	412	1	30,50,50	2.26	9 (30%)	24,82,82	2.33	11 (45%)
3	VD3	D	2001	-	28,30,30	0.91	2 (7%)	36,43,43	1.66	8 (22%)
4	ACT	D	4001	-	1,3,3	1.58	0	0,3,3	0.00	-
2	HEM	D	412	1	30,50,50	2.41	8 (26%)	24,82,82	2.40	13 (54%)
3	VD3	E	2001	-	28,30,30	0.82	0	36,43,43	2.52	12 (33%)
4	ACT	E	4005	5	1,3,3	1.69	0	0,3,3	0.00	-
4	ACT	E	4008	-	1,3,3	1.11	0	0,3,3	0.00	-
2	HEM	E	412	1	30,50,50	2.33	10 (33%)	24,82,82	2.42	11 (45%)

In the following table, the Chirals column lists the number of chiral outliers, the number of chiral centers analysed, the number of these observed in the model and the number defined in the chemical component dictionary. Similar counts are reported in the Torsion and Rings columns. '-' means no outliers of that kind were identified.

Mol	Type	Chain	Res	Link	Chirals	Torsions	Rings
3	VD3	A	2001	-	-	0/15/56/56	0/3/3/3
6	GOL	A	3001	-	-	0/4/4/4	0/0/0/0
6	GOL	A	3002	5	-	0/4/4/4	0/0/0/0
4	ACT	A	4006	-	-	0/0/0/0	0/0/0/0
2	HEM	A	412	1	-	0/10/54/54	0/0/8/8
3	VD3	B	2001	-	-	0/15/56/56	0/3/3/3
2	HEM	B	412	1	-	0/10/54/54	0/0/8/8
3	VD3	C	2001	-	-	0/15/56/56	0/3/3/3
4	ACT	C	4004	5	-	0/0/0/0	0/0/0/0

*Continued on next page...*

*Continued from previous page...*

Mol	Type	Chain	Res	Link	Chirals	Torsions	Rings
4	ACT	C	4007	-	-	0/0/0/0	0/0/0/0
2	HEM	C	412	1	-	0/10/54/54	0/0/8/8
3	VD3	D	2001	-	-	1/15/56/56	0/3/3/3
4	ACT	D	4001	-	-	0/0/0/0	0/0/0/0
2	HEM	D	412	1	-	0/10/54/54	0/0/8/8
3	VD3	E	2001	-	-	0/15/56/56	0/3/3/3
4	ACT	E	4005	5	-	0/0/0/0	0/0/0/0
4	ACT	E	4008	-	-	0/0/0/0	0/0/0/0
2	HEM	E	412	1	-	0/10/54/54	0/0/8/8

The worst 5 of 52 bond length outliers are listed below:

Mol	Chain	Res	Type	Atoms	Z	Observed(Å)	Ideal(Å)
2	D	412	HEM	C3B-C4B	-8.24	1.44	1.51
2	A	412	HEM	C3B-C4B	-7.70	1.45	1.51
2	E	412	HEM	C3B-C4B	-7.18	1.45	1.51
2	B	412	HEM	C3B-C4B	-7.02	1.45	1.51
2	C	412	HEM	C3B-C4B	-6.60	1.46	1.51

The worst 5 of 104 bond angle outliers are listed below:

Mol	Chain	Res	Type	Atoms	Z	Observed(°)	Ideal(°)
3	E	2001	VD3	C14-C13-C17	-8.98	90.39	99.74
3	A	2001	VD3	C7-C8-C9	-6.63	115.75	125.87
3	B	2001	VD3	C10-C9-C8	-4.70	118.96	125.36
3	B	2001	VD3	C7-C8-C9	-4.50	119.01	125.87
3	D	2001	VD3	C4-C5-C7	-4.24	114.75	120.64

There are no chirality outliers.

All (1) torsion outliers are listed below:

Mol	Chain	Res	Type	Atoms
3	D	2001	VD3	C9-C8-C7-C5

There are no ring outliers.

8 monomers are involved in 28 short contacts:

Mol	Chain	Res	Type	Clashes	Symm-Clashes
3	A	2001	VD3	1	0
2	A	412	HEM	1	0
3	B	2001	VD3	6	0

*Continued on next page...*

*Continued from previous page...*

Mol	Chain	Res	Type	Clashes	Symm-Clashes
3	C	2001	VD3	2	0
2	C	412	HEM	7	0
3	D	2001	VD3	4	0
2	D	412	HEM	1	0
3	E	2001	VD3	6	0

## 5.7 Other polymers [i](#)

There are no such residues in this entry.

## 5.8 Polymer linkage issues [i](#)

There are no chain breaks in this entry.

## 6 Fit of model and data ⓘ

### 6.1 Protein, DNA and RNA chains ⓘ

In the following table, the column labelled ‘#RSRZ> 2’ contains the number (and percentage) of RSRZ outliers, followed by percent RSRZ outliers for the chain as percentile scores relative to all X-ray entries and entries of similar resolution. The OWAB column contains the minimum, median, 95<sup>th</sup> percentile and maximum values of the occupancy-weighted average B-factor per residue. The column labelled ‘Q< 0.9’ lists the number of (and percentage) of residues with an average occupancy less than 0.9.

Mol	Chain	Analysed	<RSRZ>	#RSRZ>2	OWAB(Å <sup>2</sup> )	Q<0.9
1	A	402/411 (97%)	-0.17	4 (0%) 84 87	11, 20, 35, 45	0
1	B	402/411 (97%)	0.09	18 (4%) 37 42	16, 29, 52, 64	0
1	C	401/411 (97%)	0.08	14 (3%) 48 54	14, 29, 49, 61	0
1	D	401/411 (97%)	-0.10	8 (1%) 68 73	14, 29, 48, 56	0
1	E	401/411 (97%)	-0.12	4 (0%) 84 87	17, 27, 42, 52	0
All	All	2007/2055 (97%)	-0.04	48 (2%) 62 68	11, 27, 47, 64	0

The worst 5 of 48 RSRZ outliers are listed below:

Mol	Chain	Res	Type	RSRZ
1	A	403	ALA	6.3
1	C	6	THR	5.1
1	D	8	THR	4.7
1	C	399	GLY	4.5
1	B	216	MET	4.2

### 6.2 Non-standard residues in protein, DNA, RNA chains ⓘ

There are no non-standard protein/DNA/RNA residues in this entry.

### 6.3 Carbohydrates ⓘ

There are no carbohydrates in this entry.

### 6.4 Ligands ⓘ

In the following table, the Atoms column lists the number of modelled atoms in the group and the number defined in the chemical component dictionary. LLDF column lists the quality of electron

density of the group with respect to its neighbouring residues in protein, DNA or RNA chains. The B-factors column lists the minimum, median, 95<sup>th</sup> percentile and maximum values of B factors of atoms in the group. The column labelled 'Q< 0.9' lists the number of atoms with occupancy less than 0.9.

Mol	Type	Chain	Res	Atoms	RSCC	RSR	LLDF	B-factors(Å <sup>2</sup> )	Q<0.9
3	VD3	E	2001	28/28	0.59	0.40	9.89	62,74,82,82	0
3	VD3	B	2001	28/28	0.60	0.36	8.86	67,78,83,83	0
3	VD3	D	2001	28/28	0.72	0.33	8.04	56,69,77,77	0
3	VD3	A	2001	28/28	0.56	0.35	6.81	45,60,68,68	0
3	VD3	C	2001	28/28	0.74	0.27	5.03	45,64,71,71	0
4	ACT	E	4005	4/4	0.75	0.18	4.67	42,42,42,42	0
6	GOL	A	3002	6/6	0.93	0.13	2.43	29,32,33,38	0
4	ACT	C	4004	4/4	0.85	0.12	1.40	43,43,43,43	0
2	HEM	A	412	43/43	0.99	0.17	0.79	9,13,15,23	0
2	HEM	C	412	43/43	0.98	0.14	0.76	12,16,19,29	0
2	HEM	E	412	43/43	0.98	0.14	0.62	15,18,19,23	0
2	HEM	D	412	43/43	0.98	0.11	0.62	13,16,18,23	0
4	ACT	A	4006	4/4	0.95	0.17	0.50	20,20,20,20	0
6	GOL	A	3001	6/6	0.95	0.10	-0.12	23,23,24,25	0
4	ACT	C	4007	4/4	0.88	0.12	-0.18	30,30,31,31	0
2	HEM	B	412	43/43	0.97	0.11	-0.32	19,25,28,30	0
5	CA	E	2504	1/1	0.98	0.08	-0.58	35,35,35,35	0
5	CA	C	2503	1/1	0.97	0.06	-1.92	33,33,33,33	0
5	CA	A	2501	1/1	0.99	0.06	-2.07	29,29,29,29	0
5	CA	D	2502	1/1	0.97	0.04	-4.82	35,35,35,35	0
5	CA	A	2506	1/1	0.94	0.05	-	41,41,41,41	0
4	ACT	E	4008	4/4	0.97	0.10	-	36,36,36,36	0
5	CA	A	2505	1/1	0.99	0.04	-	27,27,27,27	0
4	ACT	D	4001	4/4	0.97	0.08	-	18,18,18,18	0

## 6.5 Other polymers

There are no such residues in this entry.