



# Full wwPDB X-ray Structure Validation Report ⓘ

Feb 1, 2016 – 02:41 PM GMT

PDB ID : 4A69  
Title : Structure of HDAC3 bound to corepressor and inositol tetrphosphate  
Authors : Watson, P.J.; Fairall, L.; Santos, G.M.; Schwabe, J.W.R.  
Deposited on : 2011-11-01  
Resolution : 2.06 Å(reported)

This is a Full wwPDB X-ray Structure Validation Report for a publicly released PDB entry.  
We welcome your comments at [validation@mail.wwpdb.org](mailto:validation@mail.wwpdb.org)  
A user guide is available at  
<http://wwpdb.org/validation/2016/XrayValidationReportHelp>  
with specific help available everywhere you see the ⓘ symbol.

---

The following versions of software and data (see [references ⓘ](#)) were used in the production of this report:

MolProbity : 4.02b-467  
Mogul : 1.7 (RC4), CSD as536be (2015)  
Xtriage (Phenix) : 1.9-1692  
EDS : rb-20026688  
Percentile statistics : 20151230.v01 (using entries in the PDB archive December 30th 2015)  
Refmac : 5.8.0135  
CCP4 : 6.5.0  
Ideal geometry (proteins) : Engh & Huber (2001)  
Ideal geometry (DNA, RNA) : Parkinson et al. (1996)  
Validation Pipeline (wwPDB-VP) : trunk26865

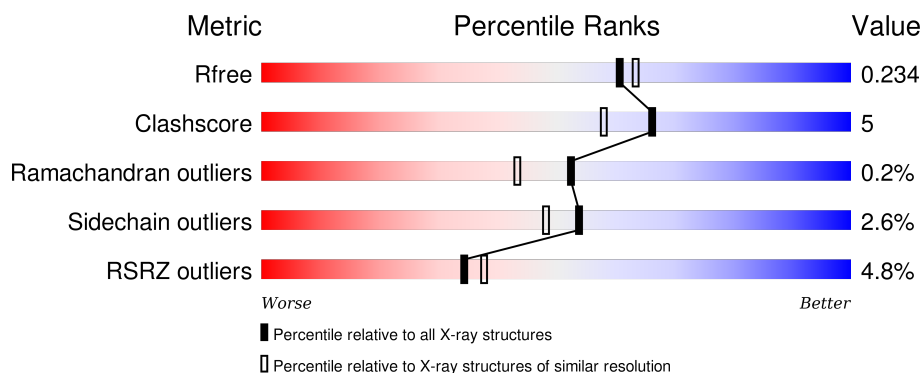
# 1 Overall quality at a glance i

The following experimental techniques were used to determine the structure:

## *X-RAY DIFFRACTION*

The reported resolution of this entry is 2.06 Å.

Percentile scores (ranging between 0-100) for global validation metrics of the entry are shown in the following graphic. The table shows the number of entries on which the scores are based.



Metric	Whole archive (#Entries)	Similar resolution (#Entries, resolution range(Å))
$R_{free}$	91344	1799 (2.08-2.04)
Clashscore	102246	1910 (2.08-2.04)
Ramachandran outliers	100387	1893 (2.08-2.04)
Sidechain outliers	100360	1893 (2.08-2.04)
RSRZ outliers	91569	1802 (2.08-2.04)

The table below summarises the geometric issues observed across the polymeric chains and their fit to the electron density. The red, orange, yellow and green segments on the lower bar indicate the fraction of residues that contain outliers for  $\geq 3$ , 2, 1 and 0 types of geometric quality criteria. A grey segment represents the fraction of residues that are not modelled. The numeric value for each fraction is indicated below the corresponding segment, with a dot representing fractions  $\leq 5\%$ . The upper red bar (where present) indicates the fraction of residues that have poor fit to the electron density. The numeric value is given above the bar.

Mol	Chain	Length	Quality of chain
1	A	376	<div> <div>2%</div> <div>86%</div> <div>11%</div> <div>..</div> </div>
1	B	376	<div> <div>3%</div> <div>88%</div> <div>9%</div> <div>..</div> </div>
2	C	94	<div> <div>13%</div> <div>70%</div> <div>..</div> <div>27%</div> </div>
2	D	94	<div> <div>15%</div> <div>61%</div> <div>11%</div> <div>•</div> <div>28%</div> </div>

The following table lists non-polymeric compounds, carbohydrate monomers and non-standard

residues in protein, DNA, RNA chains that are outliers for geometric or electron-density-fit criteria:

Mol	Type	Chain	Res	Chirality	Geometry	Clashes	Electron density
4	ACT	A	501	-	-	-	X

## 2 Entry composition [i](#)

There are 8 unique types of molecules in this entry. The entry contains 7536 atoms, of which 0 are hydrogens and 0 are deuteriums.

In the tables below, the ZeroOcc column contains the number of atoms modelled with zero occupancy, the AltConf column contains the number of residues with at least one atom in alternate conformation and the Trace column contains the number of residues modelled with at most 2 atoms.

- Molecule 1 is a protein called HISTONE DEACETYLASE 3,.

Mol	Chain	Residues	Atoms					ZeroOcc	AltConf	Trace
1	A	369	Total	C	N	O	S	0	0	0
			2971	1910	496	546	19			
1	B	369	Total	C	N	O	S	0	0	0
			2971	1910	496	546	19			

- Molecule 2 is a protein called NUCLEAR RECEPTOR COREPRESSOR 2.

Mol	Chain	Residues	Atoms					ZeroOcc	AltConf	Trace
2	C	69	Total	C	N	O	S	0	0	0
			582	376	97	102	7			
2	D	68	Total	C	N	O	S	0	0	0
			571	370	95	100	6			

There are 4 discrepancies between the modelled and reference sequences:

Chain	Residue	Modelled	Actual	Comment	Reference
C	387	GLY	-	EXPRESSION TAG	UNP Q9Y618
C	388	ALA	-	EXPRESSION TAG	UNP Q9Y618
D	387	GLY	-	EXPRESSION TAG	UNP Q9Y618
D	388	ALA	-	EXPRESSION TAG	UNP Q9Y618

- Molecule 3 is ZINC ION (three-letter code: ZN) (formula: Zn).

Mol	Chain	Residues	Atoms		ZeroOcc	AltConf
3	B	1	Total	Zn	0	0
			1	1		
3	A	1	Total	Zn	0	0
			1	1		

- Molecule 4 is ACETATE ION (three-letter code: ACT) (formula: C<sub>2</sub>H<sub>3</sub>O<sub>2</sub>).



Mol	Chain	Residues	Atoms			ZeroOcc	AltConf
4	A	1	Total	C	O	0	0
			4	2	2		
4	B	1	Total	C	O	0	0
			4	2	2		

- Molecule 5 is POTASSIUM ION (three-letter code: K) (formula: K).

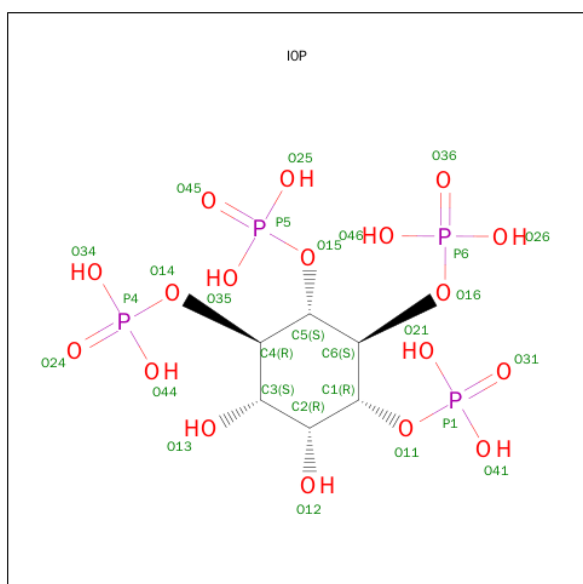
Mol	Chain	Residues	Atoms		ZeroOcc	AltConf
5	B	2	Total	K	0	0
			2	2		
5	A	2	Total	K	0	0
			2	2		

- Molecule 6 is GLYCEROL (three-letter code: GOL) (formula: C<sub>3</sub>H<sub>8</sub>O<sub>3</sub>).



Mol	Chain	Residues	Atoms			ZeroOcc	AltConf
6	A	1	Total	C	O	0	0
			6	3	3		
6	A	1	Total	C	O	0	0
			6	3	3		
6	B	1	Total	C	O	0	0
			6	3	3		
6	B	1	Total	C	O	0	0
			6	3	3		

- Molecule 7 is D-MYO INOSITOL 1,4,5,6 TETRAKISPHOSPHATE (three-letter code: IOP) (formula:  $C_6H_{16}O_{18}P_4$ ).



Mol	Chain	Residues	Atoms				ZeroOcc	AltConf
7	C	1	Total	C	O	P	0	0
			28	6	18	4		
7	D	1	Total	C	O	P	0	0
			28	6	18	4		

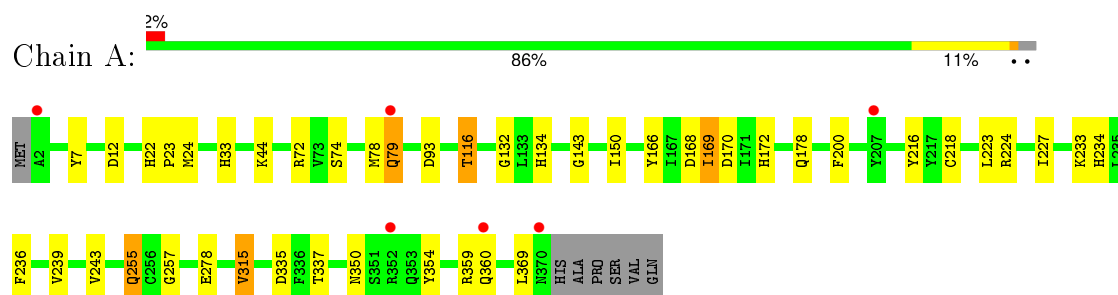
- Molecule 8 is water.

Mol	Chain	Residues	Atoms		ZeroOcc	AltConf
8	A	166	Total	O	0	0
			166	166		
8	B	147	Total	O	0	0
			147	147		
8	C	23	Total	O	0	0
			23	23		
8	D	11	Total	O	0	0
			11	11		

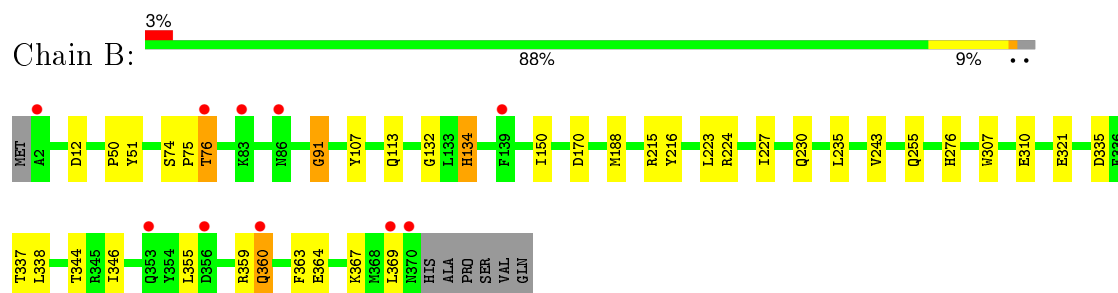
### 3 Residue-property plots

These plots are drawn for all protein, RNA and DNA chains in the entry. The first graphic for a chain summarises the proportions of errors displayed in the second graphic. The second graphic shows the sequence view annotated by issues in geometry and electron density. Residues are color-coded according to the number of geometric quality criteria for which they contain at least one outlier: green = 0, yellow = 1, orange = 2 and red = 3 or more. A red dot above a residue indicates a poor fit to the electron density ( $RSRZ > 2$ ). Stretches of 2 or more consecutive residues without any outlier are shown as a green connector. Residues present in the sample, but not in the model, are shown in grey.

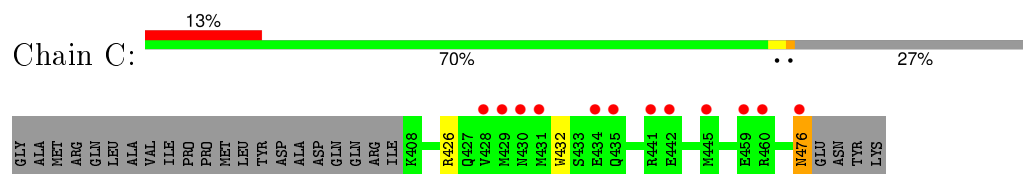
- Molecule 1: HISTONE DEACETYLASE 3,



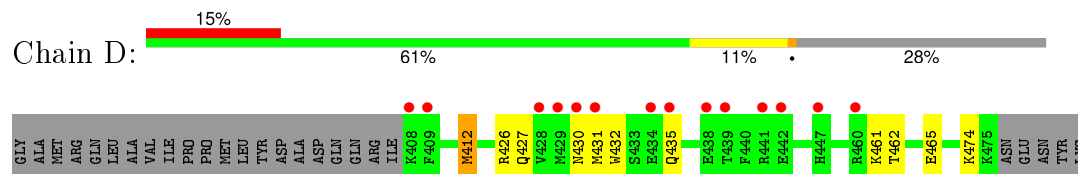
- Molecule 1: HISTONE DEACETYLASE 3,



- Molecule 2: NUCLEAR RECEPTOR COREPRESSOR 2



- Molecule 2: NUCLEAR RECEPTOR COREPRESSOR 2





## 4 Data and refinement statistics

Property	Value	Source
Space group	C 2 2 21	Depositor
Cell constants a, b, c, $\alpha$ , $\beta$ , $\gamma$	86.45Å 118.63Å 190.71Å 90.00° 90.00° 90.00°	Depositor
Resolution (Å)	95.35 – 2.06 28.93 – 2.06	Depositor EDS
% Data completeness (in resolution range)	85.3 (95.35-2.06) 85.4 (28.93-2.06)	Depositor EDS
$R_{merge}$	0.10	Depositor
$R_{sym}$	(Not available)	Depositor
$\langle I/\sigma(I) \rangle$ <sup>1</sup>	2.44 (at 2.06Å)	Xtriage
Refinement program	REFMAC 5.6.0117	Depositor
R, $R_{free}$	0.187 , 0.236 0.185 , 0.234	Depositor DCC
$R_{free}$ test set	2631 reflections (5.34%)	DCC
Wilson B-factor (Å <sup>2</sup> )	24.7	Xtriage
Anisotropy	0.503	Xtriage
Bulk solvent $k_{sol}$ (e/Å <sup>3</sup> ), $B_{sol}$ (Å <sup>2</sup> )	0.37 , 39.8	EDS
Estimated twinning fraction	No twinning to report.	Xtriage
L-test for twinning <sup>2</sup>	$\langle  L  \rangle = 0.48$ , $\langle L^2 \rangle = 0.30$	Xtriage
Outliers	0 of 51868 reflections	Xtriage
$F_o, F_c$ correlation	0.95	EDS
Total number of atoms	7536	wwPDB-VP
Average B, all atoms (Å <sup>2</sup> )	27.0	wwPDB-VP

Xtriage's analysis on translational NCS is as follows: *The largest off-origin peak in the Patterson function is 3.64% of the height of the origin peak. No significant pseudotranslation is detected.*

<sup>1</sup>Intensities estimated from amplitudes.

<sup>2</sup>Theoretical values of  $\langle |L| \rangle$ ,  $\langle L^2 \rangle$  for acentric reflections are 0.5, 0.375 respectively for untwinned datasets, and 0.333, 0.2 for perfectly twinned datasets.

## 5 Model quality [i](#)

### 5.1 Standard geometry [i](#)

Bond lengths and bond angles in the following residue types are not validated in this section: GOL, ZN, K, IOP, ACT

The Z score for a bond length (or angle) is the number of standard deviations the observed value is removed from the expected value. A bond length (or angle) with  $|Z| > 5$  is considered an outlier worth inspection. RMSZ is the root-mean-square of all Z scores of the bond lengths (or angles).

Mol	Chain	Bond lengths		Bond angles	
		RMSZ	$\# Z  > 5$	RMSZ	$\# Z  > 5$
1	A	0.51	0/3056	0.59	0/4147
1	B	0.51	1/3056 (0.0%)	0.61	0/4147
2	C	0.50	1/595 (0.2%)	0.57	0/795
2	D	0.48	0/584	0.59	0/781
All	All	0.51	2/7291 (0.0%)	0.60	0/9870

All (2) bond length outliers are listed below:

Mol	Chain	Res	Type	Atoms	Z	Observed(Å)	Ideal(Å)
1	B	307	TRP	CD2-CE2	5.32	1.47	1.41
2	C	432	TRP	CD2-CE2	5.11	1.47	1.41

There are no bond angle outliers.

There are no chirality outliers.

There are no planarity outliers.

### 5.2 Too-close contacts [i](#)

In the following table, the Non-H and H(model) columns list the number of non-hydrogen atoms and hydrogen atoms in the chain respectively. The H(added) column lists the number of hydrogen atoms added and optimized by MolProbity. The Clashes column lists the number of clashes within the asymmetric unit, whereas Symm-Clashes lists symmetry related clashes.

Mol	Chain	Non-H	H(model)	H(added)	Clashes	Symm-Clashes
1	A	2971	0	2832	35	0
1	B	2971	0	2833	25	0
2	C	582	0	578	3	0
2	D	571	0	565	10	0
3	A	1	0	0	0	0

*Continued on next page...*

*Continued from previous page...*

Mol	Chain	Non-H	H(model)	H(added)	Clashes	Symm-Clashes
3	B	1	0	0	0	0
4	A	4	0	3	0	0
4	B	4	0	3	1	0
5	A	2	0	0	0	0
5	B	2	0	0	0	0
6	A	12	0	16	1	0
6	B	12	0	16	1	0
7	C	28	0	8	1	0
7	D	28	0	8	1	0
8	A	166	0	0	4	0
8	B	147	0	0	2	0
8	C	23	0	0	1	0
8	D	11	0	0	1	0
All	All	7536	0	6862	69	0

The all-atom clashscore is defined as the number of clashes found per 1000 atoms (including hydrogen atoms). The all-atom clashscore for this structure is 5.

All (69) close contacts within the same asymmetric unit are listed below, sorted by their clash magnitude.

Atom-1	Atom-2	Interatomic distance (Å)	Clash overlap (Å)
1:B:188:MET:HE3	1:B:243:VAL:HG13	1.52	0.90
1:B:276:HIS:HD2	1:B:310:GLU:OE2	1.56	0.88
1:B:335:ASP:OD2	1:B:337:THR:HG22	1.74	0.87
1:B:188:MET:CE	1:B:243:VAL:HG13	2.16	0.76
1:A:169:ILE:HD11	1:A:236:PHE:CE1	2.24	0.72
1:A:335:ASP:OD2	1:A:337:THR:HG22	1.92	0.70
1:A:22:HIS:HD2	1:A:24:MET:H	1.38	0.70
1:B:224:ARG:HG2	1:B:224:ARG:HH11	1.56	0.69
1:A:170:ASP:HB2	1:A:255:GLN:HE22	1.57	0.69
1:B:50:PRO:HA	1:B:113:GLN:HE22	1.58	0.68
1:A:224:ARG:H	1:A:350:ASN:HD21	1.42	0.67
2:D:427:GLN:O	2:D:430:ASN:HB2	1.95	0.67
1:A:116:THR:CG2	8:A:2071:HOH:O	2.45	0.65
1:B:170:ASP:HB2	1:B:255:GLN:HE21	1.62	0.65
1:A:22:HIS:CD2	1:A:24:MET:H	2.21	0.58
1:B:51:TYR:H	1:B:113:GLN:NE2	2.02	0.58
1:B:235:LEU:HD21	1:B:359:ARG:HG2	1.86	0.58
1:A:255:GLN:C	1:A:255:GLN:HE21	2.08	0.57
2:C:476:ASN:N	2:C:476:ASN:OD1	2.38	0.57
1:A:143:GLY:HA2	2:D:412:MET:HG3	1.86	0.55

*Continued on next page...*

*Continued from previous page...*

Atom-1	Atom-2	Interatomic distance (Å)	Clash overlap (Å)
1:B:12:ASP:OD1	2:D:426:ARG:NH2	2.39	0.55
1:A:22:HIS:HE1	1:A:93:ASP:O	1.89	0.55
1:A:200:PHE:CD1	2:D:412:MET:HG2	2.42	0.55
1:B:276:HIS:CD2	1:B:310:GLU:OE2	2.48	0.54
1:B:76:THR:HB	8:B:2044:HOH:O	2.07	0.54
1:A:255:GLN:NE2	1:A:257:GLY:H	2.05	0.53
1:A:93:ASP:HB2	8:A:2064:HOH:O	2.08	0.53
1:A:234:HIS:O	1:A:359:ARG:NH1	2.43	0.52
2:D:462:THR:HG22	2:D:465:GLU:HG3	1.92	0.52
1:A:223:LEU:HD13	1:A:227:ILE:HD13	1.92	0.52
1:A:170:ASP:HB2	1:A:255:GLN:NE2	2.24	0.52
1:A:172:HIS:CE1	2:D:412:MET:HE1	2.45	0.51
1:A:224:ARG:H	1:A:350:ASN:ND2	2.09	0.51
1:A:224:ARG:HH21	1:A:354:TYR:HD1	1.58	0.50
1:B:359:ARG:O	1:B:363:PHE:HD2	1.95	0.49
1:A:116:THR:HG22	8:A:2071:HOH:O	2.11	0.49
1:A:12:ASP:OD1	2:C:426:ARG:NH2	2.46	0.49
1:B:74:SER:C	1:B:76:THR:H	2.16	0.49
1:A:116:THR:HG23	8:A:2071:HOH:O	2.11	0.48
1:B:355:LEU:O	1:B:359:ARG:HG3	2.14	0.48
2:D:474:LYS:NZ	7:D:501:IOP:O35	2.48	0.47
1:B:321:GLU:HG3	1:B:337:THR:OG1	2.14	0.47
2:D:426:ARG:HD3	8:D:2002:HOH:O	2.15	0.47
1:A:166:TYR:CE2	1:A:168:ASP:HB2	2.49	0.47
1:A:233:LYS:HE2	1:A:278:GLU:OE1	2.16	0.46
1:A:239:VAL:O	1:A:243:VAL:HG23	2.17	0.45
2:D:432:TRP:CZ2	2:D:461:LYS:HG2	2.51	0.45
1:A:7:TYR:OH	1:A:33:HIS:HD2	1.99	0.45
1:B:132:GLY:HA2	1:B:150:ILE:HD11	1.99	0.45
2:C:426:ARG:HD3	8:C:2005:HOH:O	2.16	0.45
1:B:74:SER:O	1:B:76:THR:N	2.49	0.44
1:B:223:LEU:HD13	1:B:227:ILE:HD13	1.99	0.44
1:B:134:HIS:NE2	4:B:501:ACT:OXT	2.51	0.43
1:A:132:GLY:HA2	1:A:150:ILE:HD11	1.99	0.43
1:B:344:THR:HB	1:B:346:ILE:HG12	2.01	0.43
1:A:79:GLN:CD	1:A:79:GLN:H	2.22	0.43
1:B:91:GLY:HA2	8:B:2050:HOH:O	2.19	0.42
1:B:215:ARG:O	1:B:216:TYR:HB2	2.19	0.42
1:B:51:TYR:H	1:B:113:GLN:HE22	1.67	0.42
1:A:116:THR:HG21	6:A:505:GOL:O3	2.19	0.42
1:A:216:TYR:O	1:A:369:LEU:HD21	2.20	0.42

*Continued on next page...*

*Continued from previous page...*

Atom-1	Atom-2	Interatomic distance (Å)	Clash overlap (Å)
1:B:360:GLN:NE2	1:B:364:GLU:OE2	2.53	0.42
6:B:506:GOL:H12	7:C:501:IOP:H3	2.01	0.42
1:A:74:SER:O	1:A:78:MET:HG3	2.20	0.41
1:A:169:ILE:O	1:A:169:ILE:HG23	2.19	0.41
1:A:22:HIS:HA	1:A:23:PRO:HD3	1.88	0.41
2:D:432:TRP:CE2	2:D:461:LYS:HE2	2.56	0.41
1:A:178:GLN:HG3	1:A:218:CYS:SG	2.60	0.41
1:A:44:LYS:HD3	1:A:315:VAL:HG13	2.03	0.40

There are no symmetry-related clashes.

## 5.3 Torsion angles [i](#)

### 5.3.1 Protein backbone [i](#)

In the following table, the Percentiles column shows the percent Ramachandran outliers of the chain as a percentile score with respect to all X-ray entries followed by that with respect to entries of similar resolution.

The Analysed column shows the number of residues for which the backbone conformation was analysed, and the total number of residues.

Mol	Chain	Analysed	Favoured	Allowed	Outliers	Percentiles	
1	A	367/376 (98%)	362 (99%)	5 (1%)	0	100	100
1	B	367/376 (98%)	356 (97%)	9 (2%)	2 (0%)	34	22
2	C	67/94 (71%)	65 (97%)	2 (3%)	0	100	100
2	D	66/94 (70%)	65 (98%)	1 (2%)	0	100	100
All	All	867/940 (92%)	848 (98%)	17 (2%)	2 (0%)	52	43

All (2) Ramachandran outliers are listed below:

Mol	Chain	Res	Type
1	B	75	PRO
1	B	91	GLY

### 5.3.2 Protein sidechains [i](#)

In the following table, the Percentiles column shows the percent sidechain outliers of the chain as a percentile score with respect to all X-ray entries followed by that with respect to entries of similar

resolution.

The Analysed column shows the number of residues for which the sidechain conformation was analysed, and the total number of residues.

Mol	Chain	Analysed	Rotameric	Outliers	Percentiles	
1	A	321/327 (98%)	313 (98%)	8 (2%)	55	49
1	B	321/327 (98%)	313 (98%)	8 (2%)	55	49
2	C	63/85 (74%)	62 (98%)	1 (2%)	70	67
2	D	61/85 (72%)	58 (95%)	3 (5%)	31	21
All	All	766/824 (93%)	746 (97%)	20 (3%)	54	48

All (20) residues with a non-rotameric sidechain are listed below:

Mol	Chain	Res	Type
1	A	72	ARG
1	A	79	GLN
1	A	116	THR
1	A	134	HIS
1	A	169	ILE
1	A	255	GLN
1	A	315	VAL
1	A	360	GLN
1	B	76	THR
1	B	107	TYR
1	B	134	HIS
1	B	230	GLN
1	B	338	LEU
1	B	360	GLN
1	B	367	LYS
1	B	369	LEU
2	C	476	ASN
2	D	412	MET
2	D	431	MET
2	D	435	GLN

Some sidechains can be flipped to improve hydrogen bonding and reduce clashes. All (17) such sidechains are listed below:

Mol	Chain	Res	Type
1	A	22	HIS
1	A	33	HIS
1	A	178	GLN

*Continued on next page...*

*Continued from previous page...*

Mol	Chain	Res	Type
1	A	220	ASN
1	A	237	GLN
1	A	255	GLN
1	A	350	ASN
1	B	79	GLN
1	B	113	GLN
1	B	178	GLN
1	B	220	ASN
1	B	230	GLN
1	B	234	HIS
1	B	237	GLN
1	B	276	HIS
1	B	360	GLN
2	C	427	GLN

### 5.3.3 RNA [i](#)

There are no RNA molecules in this entry.

## 5.4 Non-standard residues in protein, DNA, RNA chains [i](#)

There are no non-standard protein/DNA/RNA residues in this entry.

## 5.5 Carbohydrates [i](#)

There are no carbohydrates in this entry.

## 5.6 Ligand geometry [i](#)

Of 14 ligands modelled in this entry, 6 are monoatomic - leaving 8 for Mogul analysis.

In the following table, the Counts columns list the number of bonds (or angles) for which Mogul statistics could be retrieved, the number of bonds (or angles) that are observed in the model and the number of bonds (or angles) that are defined in the chemical component dictionary. The Link column lists molecule types, if any, to which the group is linked. The Z score for a bond length (or angle) is the number of standard deviations the observed value is removed from the expected value. A bond length (or angle) with  $|Z| > 2$  is considered an outlier worth inspection. RMSZ is the root-mean-square of all Z scores of the bond lengths (or angles).

Mol	Type	Chain	Res	Link	Bond lengths			Bond angles		
					Counts	RMSZ	# Z  > 2	Counts	RMSZ	# Z  > 2
4	ACT	A	501	3	1,3,3	1.17	0	0,3,3	0.00	-
6	GOL	A	505	-	5,5,5	0.36	0	5,5,5	0.38	0
6	GOL	A	506	-	5,5,5	0.21	0	5,5,5	0.54	0
4	ACT	B	501	3	1,3,3	1.50	0	0,3,3	0.00	-
6	GOL	B	505	-	5,5,5	0.21	0	5,5,5	0.74	0
6	GOL	B	506	-	5,5,5	0.25	0	5,5,5	0.49	0
7	I0P	C	501	-	28,28,28	0.61	0	38,46,46	1.05	3 (7%)
7	I0P	D	501	-	28,28,28	0.62	0	38,46,46	1.16	2 (5%)

In the following table, the Chirals column lists the number of chiral outliers, the number of chiral centers analysed, the number of these observed in the model and the number defined in the chemical component dictionary. Similar counts are reported in the Torsion and Rings columns. '-' means no outliers of that kind were identified.

Mol	Type	Chain	Res	Link	Chirals	Torsions	Rings
4	ACT	A	501	3	-	0/0/0/0	0/0/0/0
6	GOL	A	505	-	-	0/4/4/4	0/0/0/0
6	GOL	A	506	-	-	0/4/4/4	0/0/0/0
4	ACT	B	501	3	-	0/0/0/0	0/0/0/0
6	GOL	B	505	-	-	0/4/4/4	0/0/0/0
6	GOL	B	506	-	-	0/4/4/4	0/0/0/0
7	I0P	C	501	-	-	0/20/44/44	0/1/1/1
7	I0P	D	501	-	-	0/20/44/44	0/1/1/1

There are no bond length outliers.

All (5) bond angle outliers are listed below:

Mol	Chain	Res	Type	Atoms	Z	Observed(°)	Ideal(°)
7	D	501	I0P	O16-P6-O36	-2.26	101.46	107.11
7	C	501	I0P	P5-O15-C5	2.08	126.55	121.56
7	C	501	I0P	O34-P4-O24	2.22	117.72	110.58
7	C	501	I0P	O41-P1-O21	2.23	115.85	107.38
7	D	501	I0P	P5-O15-C5	2.30	127.08	121.56

There are no chirality outliers.

There are no torsion outliers.

There are no ring outliers.

5 monomers are involved in 4 short contacts:



Mol	Chain	Res	Type	Clashes	Symm-Clashes
6	A	505	GOL	1	0
4	B	501	ACT	1	0
6	B	506	GOL	1	0
7	C	501	I0P	1	0
7	D	501	I0P	1	0

## 5.7 Other polymers [i](#)

There are no such residues in this entry.

## 5.8 Polymer linkage issues [i](#)

There are no chain breaks in this entry.

## 6 Fit of model and data ⓘ

### 6.1 Protein, DNA and RNA chains ⓘ

In the following table, the column labelled ‘#RSRZ> 2’ contains the number (and percentage) of RSRZ outliers, followed by percent RSRZ outliers for the chain as percentile scores relative to all X-ray entries and entries of similar resolution. The OWAB column contains the minimum, median, 95<sup>th</sup> percentile and maximum values of the occupancy-weighted average B-factor per residue. The column labelled ‘Q< 0.9’ lists the number of (and percentage) of residues with an average occupancy less than 0.9.

Mol	Chain	Analysed	<RSRZ>	#RSRZ>2	OWAB(Å <sup>2</sup> )	Q<0.9
1	A	369/376 (98%)	-0.03	6 (1%) 74 78	15, 22, 40, 58	0
1	B	369/376 (98%)	0.05	10 (2%) 58 63	16, 23, 40, 54	0
2	C	69/94 (73%)	0.72	12 (17%) 2 2	20, 35, 57, 76	0
2	D	68/94 (72%)	0.85	14 (20%) 1 1	21, 37, 58, 68	0
All	All	875/940 (93%)	0.13	42 (4%) 34 38	15, 24, 49, 76	0

All (42) RSRZ outliers are listed below:

Mol	Chain	Res	Type	RSRZ
2	D	428	VAL	5.9
2	C	428	VAL	5.7
2	C	430	ASN	5.3
2	C	429	MET	4.7
2	D	430	ASN	4.3
2	D	429	MET	4.1
1	B	369	LEU	3.8
2	D	431	MET	3.8
1	B	2	ALA	3.6
2	C	435	GLN	3.5
2	C	431	MET	3.5
2	C	476	ASN	3.4
2	D	460	ARG	3.3
2	C	460	ARG	3.2
1	A	2	ALA	3.2
1	B	356	ASP	3.2
2	C	459	GLU	3.0
1	A	360	GLN	2.9
2	C	445	MET	2.8
2	D	442	GLU	2.8
1	A	352	ARG	2.8

*Continued on next page...*

*Continued from previous page...*

Mol	Chain	Res	Type	RSRZ
1	A	79	GLN	2.7
1	B	83	LYS	2.7
1	B	370	ASN	2.7
2	D	447	HIS	2.6
2	D	435	GLN	2.6
2	D	438	GLU	2.6
2	C	441	ARG	2.5
2	D	441	ARG	2.5
2	D	434	GLU	2.5
1	B	76	THR	2.5
1	A	207	TYR	2.4
1	A	370	ASN	2.3
1	B	360	GLN	2.3
1	B	86	ASN	2.2
2	D	408	LYS	2.2
1	B	139	PHE	2.1
1	B	353	GLN	2.1
2	C	434	GLU	2.0
2	D	409	PHE	2.0
2	D	439	THR	2.0
2	C	442	GLU	2.0

## 6.2 Non-standard residues in protein, DNA, RNA chains ⓘ

There are no non-standard protein/DNA/RNA residues in this entry.

## 6.3 Carbohydrates ⓘ

There are no carbohydrates in this entry.

## 6.4 Ligands ⓘ

In the following table, the Atoms column lists the number of modelled atoms in the group and the number defined in the chemical component dictionary. LLDF column lists the quality of electron density of the group with respect to its neighbouring residues in protein, DNA or RNA chains. The B-factors column lists the minimum, median, 95<sup>th</sup> percentile and maximum values of B factors of atoms in the group. The column labelled 'Q< 0.9' lists the number of atoms with occupancy less than 0.9.

Mol	Type	Chain	Res	Atoms	RSCC	RSR	LLDF	B-factors(Å <sup>2</sup> )	Q<0.9
4	ACT	A	501	4/4	0.98	0.17	3.01	23,24,24,25	0

*Continued on next page...*

*Continued from previous page...*

Mol	Type	Chain	Res	Atoms	RSCC	RSR	LLDF	B-factors( $\text{\AA}^2$ )	Q<0.9
6	GOL	A	505	6/6	0.92	0.14	1.55	25,25,26,27	0
6	GOL	B	506	6/6	0.89	0.15	1.32	34,37,39,42	0
6	GOL	A	506	6/6	0.93	0.13	1.19	36,37,39,39	0
4	ACT	B	501	4/4	0.98	0.15	0.97	22,22,23,23	0
7	I0P	D	501	28/28	0.98	0.10	-0.41	20,23,32,33	0
7	I0P	C	501	28/28	0.97	0.10	-0.48	20,24,29,30	0
5	K	B	504	1/1	1.00	0.07	-1.69	25,25,25,25	0
5	K	A	503	1/1	1.00	0.10	-1.93	18,18,18,18	0
3	ZN	A	500	1/1	1.00	0.07	-2.65	17,17,17,17	0
5	K	B	503	1/1	1.00	0.09	-2.66	19,19,19,19	0
3	ZN	B	500	1/1	1.00	0.06	-3.38	20,20,20,20	0
5	K	A	504	1/1	0.98	0.05	-3.54	36,36,36,36	0
6	GOL	B	505	6/6	0.91	0.12	-	24,25,26,26	0

## 6.5 Other polymers [i](#)

There are no such residues in this entry.