



# Full wwPDB X-ray Structure Validation Report ⓘ

Jan 31, 2016 – 06:20 PM GMT

PDB ID : 1A7A  
Title : STRUCTURE OF HUMAN PLACENTAL S-ADENOSYLHOMOCYSTEINE HYDROLASE: DETERMINATION OF A 30 SELENIUM ATOM SUBSTRUCTURE FROM DATA AT A SINGLE WAVELENGTH  
Authors : Turner, M.A.; Yuan, C.-S.; Borchardt, R.T.; Hershfield, M.S.; Smith, G.D.; Howell, P.L.  
Deposited on : 1998-03-10  
Resolution : 2.80 Å(reported)

This is a Full wwPDB X-ray Structure Validation Report for a publicly released PDB entry.  
We welcome your comments at [validation@mail.wwpdb.org](mailto:validation@mail.wwpdb.org)  
A user guide is available at  
<http://wwpdb.org/validation/2016/XrayValidationReportHelp>  
with specific help available everywhere you see the ⓘ symbol.

---

The following versions of software and data (see [references ⓘ](#)) were used in the production of this report:

MolProbity : 4.02b-467  
Mogul : 1.7 (RC4), CSD as536be (2015)  
Xtriage (Phenix) : 1.9-1692  
EDS : rb-20026688  
Percentile statistics : 20151230.v01 (using entries in the PDB archive December 30th 2015)  
Refmac : 5.8.0135  
CCP4 : 6.5.0  
Ideal geometry (proteins) : Engh & Huber (2001)  
Ideal geometry (DNA, RNA) : Parkinson et al. (1996)  
Validation Pipeline (wwPDB-VP) : trunk26865

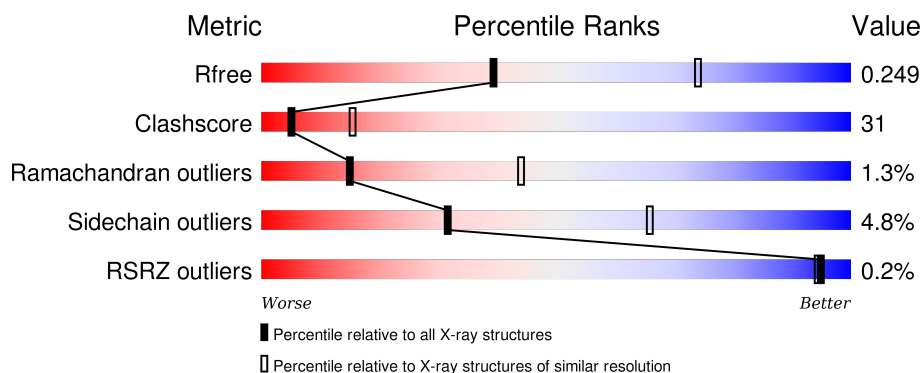
# 1 Overall quality at a glance

The following experimental techniques were used to determine the structure:

## *X-RAY DIFFRACTION*

The reported resolution of this entry is 2.80 Å.

Percentile scores (ranging between 0-100) for global validation metrics of the entry are shown in the following graphic. The table shows the number of entries on which the scores are based.



Metric	Whole archive (#Entries)	Similar resolution (#Entries, resolution range(Å))
$R_{free}$	91344	2393 (2.80-2.80)
Clashscore	102246	2827 (2.80-2.80)
Ramachandran outliers	100387	2782 (2.80-2.80)
Sidechain outliers	100360	2784 (2.80-2.80)
RSRZ outliers	91569	2404 (2.80-2.80)

The table below summarises the geometric issues observed across the polymeric chains and their fit to the electron density. The red, orange, yellow and green segments on the lower bar indicate the fraction of residues that contain outliers for  $\geq 3$ , 2, 1 and 0 types of geometric quality criteria. A grey segment represents the fraction of residues that are not modelled. The numeric value for each fraction is indicated below the corresponding segment, with a dot representing fractions  $\leq 5\%$ . The upper red bar (where present) indicates the fraction of residues that have poor fit to the electron density. The numeric value is given above the bar.

Mol	Chain	Length	Quality of chain
1	A	432	
1	B	432	

The following table lists non-polymeric compounds, carbohydrate monomers and non-standard residues in protein, DNA, RNA chains that are outliers for geometric or electron-density-fit criteria:

Mol	Type	Chain	Res	Chirality	Geometry	Clashes	Electron density
3	ADC	B	436	X	-	-	-

## 2 Entry composition

There are 4 unique types of molecules in this entry. The entry contains 6834 atoms, of which 0 are hydrogens and 0 are deuteriums.

In the tables below, the ZeroOcc column contains the number of atoms modelled with zero occupancy, the AltConf column contains the number of residues with at least one atom in alternate conformation and the Trace column contains the number of residues modelled with at most 2 atoms.

- Molecule 1 is a protein called S-ADENOSYLHOMOCYSTEINE HYDROLASE.

Mol	Chain	Residues	Atoms						ZeroOcc	AltConf	Trace
1	A	431	Total	C	N	O	S	Se	0	0	0
			3336	2115	573	623	10	15			
1	B	430	Total	C	N	O	S	Se	0	0	0
			3330	2112	572	621	10	15			

There are 30 discrepancies between the modelled and reference sequences:

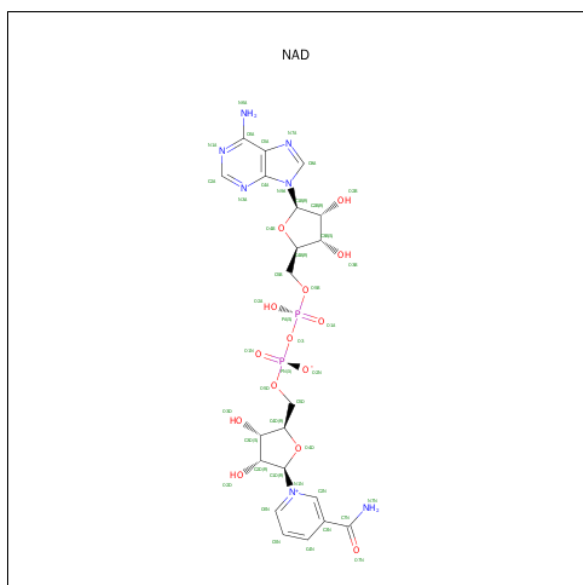
Chain	Residue	Modelled	Actual	Comment	Reference
A	29	MSE	MET	ENGINEERED	UNP P23526
A	33	MSE	MET	ENGINEERED	UNP P23526
A	35	MSE	MET	ENGINEERED	UNP P23526
A	56	MSE	MET	ENGINEERED	UNP P23526
A	127	MSE	MET	ENGINEERED	UNP P23526
A	167	MSE	MET	ENGINEERED	UNP P23526
A	168	MSE	MET	ENGINEERED	UNP P23526
A	210	MSE	MET	ENGINEERED	UNP P23526
A	254	MSE	MET	ENGINEERED	UNP P23526
A	262	MSE	MET	ENGINEERED	UNP P23526
A	290	MSE	MET	ENGINEERED	UNP P23526
A	351	MSE	MET	ENGINEERED	UNP P23526
A	358	MSE	MET	ENGINEERED	UNP P23526
A	367	MSE	MET	ENGINEERED	UNP P23526
A	419	MSE	MET	ENGINEERED	UNP P23526
B	29	MSE	MET	ENGINEERED	UNP P23526
B	33	MSE	MET	ENGINEERED	UNP P23526
B	35	MSE	MET	ENGINEERED	UNP P23526
B	56	MSE	MET	ENGINEERED	UNP P23526
B	127	MSE	MET	ENGINEERED	UNP P23526
B	167	MSE	MET	ENGINEERED	UNP P23526
B	168	MSE	MET	ENGINEERED	UNP P23526
B	210	MSE	MET	ENGINEERED	UNP P23526
B	254	MSE	MET	ENGINEERED	UNP P23526
B	262	MSE	MET	ENGINEERED	UNP P23526

*Continued on next page...*

*Continued from previous page...*

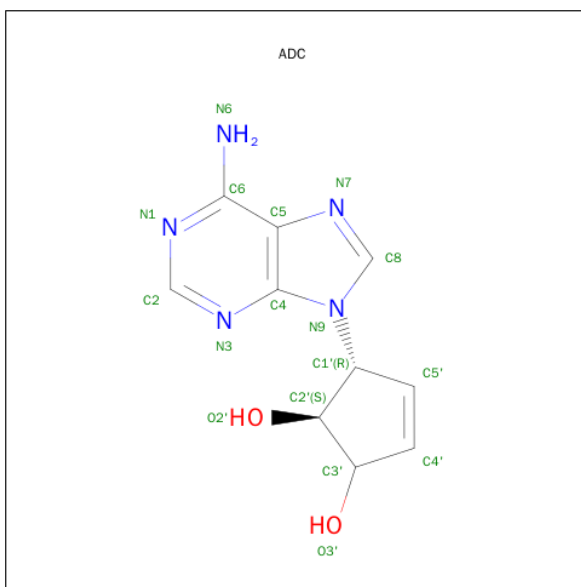
Chain	Residue	Modelled	Actual	Comment	Reference
B	290	MSE	MET	ENGINEERED	UNP P23526
B	351	MSE	MET	ENGINEERED	UNP P23526
B	358	MSE	MET	ENGINEERED	UNP P23526
B	367	MSE	MET	ENGINEERED	UNP P23526
B	419	MSE	MET	ENGINEERED	UNP P23526

- Molecule 2 is NICOTINAMIDE-ADENINE-DINUCLEOTIDE (three-letter code: NAD) (formula:  $C_{21}H_{27}N_7O_{14}P_2$ ).



Mol	Chain	Residues	Atoms					ZeroOcc	AltConf
2	A	1	Total	C	N	O	P	0	0
			44	21	7	14	2		
2	B	1	Total	C	N	O	P	0	0
			44	21	7	14	2		

- Molecule 3 is (1'R,2'S)-9-(2-HYDROXY-3'-KETO-CYCLOPENTEN-1-YL)ADENINE (three-letter code: ADC) (formula:  $C_{10}H_{11}N_5O_2$ ).



Mol	Chain	Residues	Atoms				ZeroOcc	AltConf
3	A	1	Total	C	N	O	0	0
			17	10	5	2		
3	B	1	Total	C	N	O	0	0
			17	10	5	2		

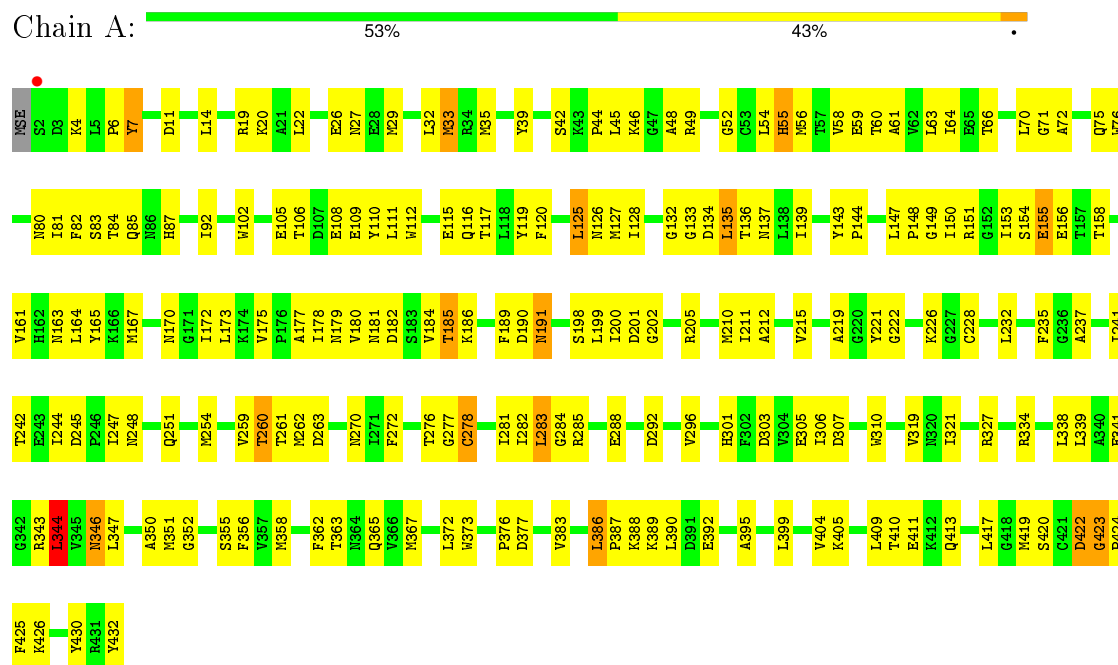
- Molecule 4 is water.

Mol	Chain	Residues	Atoms		ZeroOcc	AltConf
4	A	27	Total	O	0	0
			27	27		
4	B	19	Total	O	0	0
			19	19		

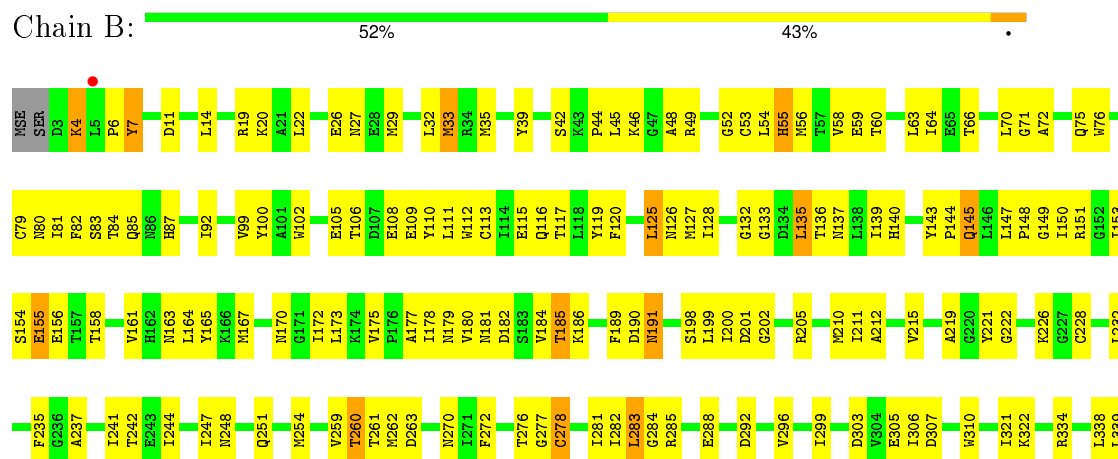
### 3 Residue-property plots

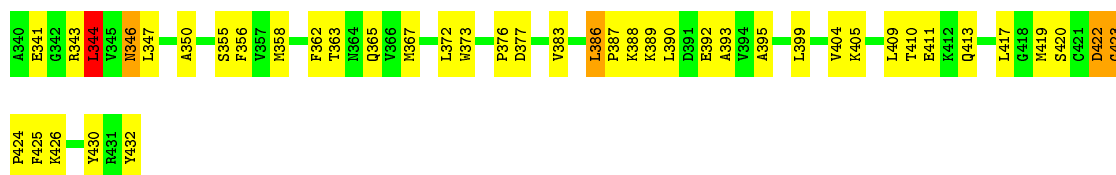
These plots are drawn for all protein, RNA and DNA chains in the entry. The first graphic for a chain summarises the proportions of errors displayed in the second graphic. The second graphic shows the sequence view annotated by issues in geometry and electron density. Residues are color-coded according to the number of geometric quality criteria for which they contain at least one outlier: green = 0, yellow = 1, orange = 2 and red = 3 or more. A red dot above a residue indicates a poor fit to the electron density ( $RSRZ > 2$ ). Stretches of 2 or more consecutive residues without any outlier are shown as a green connector. Residues present in the sample, but not in the model, are shown in grey.

#### • Molecule 1: S-ADENOSYLHOMOCYSTEINE HYDROLASE



#### • Molecule 1: S-ADENOSYLHOMOCYSTEINE HYDROLASE







## 4 Data and refinement statistics

Property	Value	Source
Space group	C 2 2 2	Depositor
Cell constants a, b, c, $\alpha$ , $\beta$ , $\gamma$	91.93Å 168.02Å 137.77Å 90.00° 90.00° 90.00°	Depositor
Resolution (Å)	20.00 – 2.80 45.97 – 2.80	Depositor EDS
% Data completeness (in resolution range)	97.5 (20.00-2.80) 97.5 (45.97-2.80)	Depositor EDS
$R_{merge}$	0.07	Depositor
$R_{sym}$	(Not available)	Depositor
$\langle I/\sigma(I) \rangle$ <sup>1</sup>	10.90 (at 2.81Å)	Xtriage
Refinement program	CNS 0.1	Depositor
R, $R_{free}$	0.227 , 0.247 0.225 , 0.249	Depositor DCC
$R_{free}$ test set	2515 reflections (9.69%)	DCC
Wilson B-factor (Å <sup>2</sup> )	23.6	Xtriage
Anisotropy	1.093	Xtriage
Bulk solvent $k_{sol}$ (e/Å <sup>3</sup> ), $B_{sol}$ (Å <sup>2</sup> )	0.34 , 31.8	EDS
Estimated twinning fraction	0.023 for 1/2*h-1/2*k,-3/2*h-1/2*k,-l 0.037 for 1/2*h+1/2*k,3/2*h-1/2*k,-l	Xtriage
L-test for twinning <sup>2</sup>	$\langle  L  \rangle = 0.46$ , $\langle L^2 \rangle = 0.29$	Xtriage
Outliers	0 of 49640 reflections	Xtriage
$F_o, F_c$ correlation	0.90	EDS
Total number of atoms	6834	wwPDB-VP
Average B, all atoms (Å <sup>2</sup> )	21.0	wwPDB-VP

Xtriage's analysis on translational NCS is as follows: *The largest off-origin peak in the Patterson function is 6.38% of the height of the origin peak. No significant pseudotranslation is detected.*

<sup>1</sup> Intensities estimated from amplitudes.

<sup>2</sup> Theoretical values of  $\langle |L| \rangle$ ,  $\langle L^2 \rangle$  for acentric reflections are 0.5, 0.375 respectively for untwinned datasets, and 0.333, 0.2 for perfectly twinned datasets.

## 5 Model quality

### 5.1 Standard geometry

Bond lengths and bond angles in the following residue types are not validated in this section: ADC, NAD

The Z score for a bond length (or angle) is the number of standard deviations the observed value is removed from the expected value. A bond length (or angle) with  $|Z| > 5$  is considered an outlier worth inspection. RMSZ is the root-mean-square of all Z scores of the bond lengths (or angles).

Mol	Chain	Bond lengths		Bond angles	
		RMSZ	$\# Z  > 5$	RMSZ	$\# Z  > 5$
1	A	0.44	0/3385	0.69	0/4556
1	B	0.43	0/3379	0.68	0/4548
All	All	0.43	0/6764	0.69	0/9104

There are no bond length outliers.

There are no bond angle outliers.

There are no chirality outliers.

There are no planarity outliers.

### 5.2 Too-close contacts

In the following table, the Non-H and H(model) columns list the number of non-hydrogen atoms and hydrogen atoms in the chain respectively. The H(added) column lists the number of hydrogen atoms added and optimized by MolProbity. The Clashes column lists the number of clashes within the asymmetric unit, whereas Symm-Clashes lists symmetry related clashes.

Mol	Chain	Non-H	H(model)	H(added)	Clashes	Symm-Clashes
1	A	3336	0	3350	212	0
1	B	3330	0	3345	221	1
2	A	44	0	26	2	0
2	B	44	0	25	2	0
3	A	17	0	8	3	0
3	B	17	0	9	3	0
4	A	27	0	0	4	0
4	B	19	0	0	0	2
All	All	6834	0	6763	417	2

The all-atom clashscore is defined as the number of clashes found per 1000 atoms (including hydrogen atoms). The all-atom clashscore for this structure is 31.

All (417) close contacts within the same asymmetric unit are listed below, sorted by their clash magnitude.

Atom-1	Atom-2	Interatomic distance (Å)	Clash overlap (Å)
1:A:276:THR:HG22	1:A:278:CYS:H	1.16	1.07
1:B:276:THR:HG22	1:B:278:CYS:H	1.14	1.05
1:B:127:MSE:HE3	1:B:373:TRP:HB2	1.48	0.96
1:A:127:MSE:HE3	1:A:373:TRP:HB2	1.49	0.95
1:A:404:VAL:HG13	1:B:259:VAL:HB	1.51	0.90
1:B:20:LYS:HA	1:B:20:LYS:HE2	1.56	0.88
1:A:409:LEU:HD21	1:A:419:MSE:HE3	1.57	0.86
1:B:128:ILE:HG23	1:B:135:LEU:HD13	1.58	0.85
1:A:409:LEU:CD2	1:A:419:MSE:HE3	2.07	0.84
1:A:248:ASN:HA	1:A:251:GLN:HE21	1.42	0.84
1:A:20:LYS:HE2	1:A:20:LYS:HA	1.57	0.83
1:B:248:ASN:HA	1:B:251:GLN:HE21	1.41	0.83
1:A:128:ILE:HG23	1:A:135:LEU:HD13	1.60	0.83
1:B:409:LEU:HD21	1:B:419:MSE:HE3	1.61	0.82
1:B:173:LEU:HD11	1:B:175:VAL:O	1.80	0.82
1:B:409:LEU:CD2	1:B:419:MSE:HE3	2.08	0.82
1:A:127:MSE:HE2	1:A:373:TRP:HE3	1.43	0.81
1:A:173:LEU:HD11	1:A:175:VAL:O	1.80	0.81
1:A:49:ARG:N	1:A:126:ASN:HD22	1.78	0.81
1:B:276:THR:HG22	1:B:278:CYS:N	1.96	0.81
1:B:222:GLY:HA3	2:B:434:NAD:O1A	1.79	0.81
1:B:127:MSE:HE2	1:B:373:TRP:HE3	1.47	0.80
1:A:260:THR:HG22	1:A:261:THR:H	1.46	0.80
1:A:49:ARG:H	1:A:126:ASN:HD22	1.30	0.79
1:A:262:MSE:HE2	1:A:282:ILE:HG12	1.65	0.79
1:B:125:LEU:H	1:B:125:LEU:HD23	1.47	0.79
1:B:262:MSE:HE2	1:B:282:ILE:HG12	1.65	0.78
1:A:222:GLY:HA3	2:A:433:NAD:O1A	1.83	0.78
1:A:186:LYS:HZ2	1:A:191:ASN:HD21	1.31	0.78
1:A:417:LEU:HD13	1:A:419:MSE:HE2	1.67	0.77
1:A:125:LEU:HD23	1:A:125:LEU:H	1.50	0.77
1:B:56:MSE:HE1	1:B:92:ILE:HG13	1.65	0.77
1:B:417:LEU:HD13	1:B:419:MSE:HE2	1.66	0.76
1:B:49:ARG:N	1:B:126:ASN:HD22	1.83	0.76
1:A:58:VAL:H	1:A:85:GLN:NE2	1.84	0.76
1:A:186:LYS:NZ	1:A:191:ASN:HD21	1.84	0.75
1:B:58:VAL:H	1:B:85:GLN:NE2	1.84	0.75
1:A:259:VAL:HB	1:B:404:VAL:HG13	1.68	0.75
1:B:151:ARG:HD3	1:B:376:PRO:HG3	1.69	0.74
1:A:278:CYS:HB3	1:B:417:LEU:HD21	1.68	0.74

*Continued on next page...*

*Continued from previous page...*

Atom-1	Atom-2	Interatomic distance (Å)	Clash overlap (Å)
1:B:260:THR:HG22	1:B:261:THR:H	1.51	0.74
1:A:276:THR:HG22	1:A:278:CYS:N	1.98	0.74
1:A:56:MSE:HE1	1:A:92:ILE:HG13	1.69	0.74
1:B:49:ARG:H	1:B:126:ASN:HD22	1.36	0.74
1:B:186:LYS:NZ	1:B:191:ASN:HD21	1.85	0.73
1:A:151:ARG:HD3	1:A:376:PRO:HG3	1.68	0.73
1:B:145:GLN:NE2	1:B:145:GLN:H	1.87	0.73
1:A:417:LEU:HD21	1:B:278:CYS:HB3	1.71	0.73
1:A:215:VAL:H	1:A:270:ASN:HD22	1.34	0.73
1:A:387:PRO:HD2	1:A:390:LEU:HD12	1.71	0.73
1:B:215:VAL:H	1:B:270:ASN:HD22	1.38	0.72
1:A:75:GLN:HG3	1:A:120:PHE:CE2	2.26	0.70
1:A:307:ASP:OD2	1:A:310:TRP:HB2	1.92	0.70
1:A:29:MSE:CE	1:A:59:GLU:HG3	2.21	0.70
1:A:127:MSE:HE3	1:A:373:TRP:CB	2.21	0.70
1:A:29:MSE:HE1	1:A:59:GLU:HG3	1.74	0.69
1:B:387:PRO:HD2	1:B:390:LEU:HD12	1.74	0.69
1:B:186:LYS:HZ2	1:B:191:ASN:HD21	1.39	0.69
1:B:106:THR:OG1	1:B:109:GLU:HG3	1.93	0.69
1:B:181:ASN:HD22	1:B:186:LYS:NZ	1.91	0.69
1:B:276:THR:HG22	1:B:277:GLY:N	2.07	0.68
1:B:29:MSE:CE	1:B:59:GLU:HG3	2.24	0.68
1:B:161:VAL:HG21	1:B:179:ASN:OD1	1.93	0.68
1:A:276:THR:HG22	1:A:277:GLY:N	2.07	0.68
1:A:181:ASN:HD22	1:A:186:LYS:NZ	1.91	0.68
1:B:156:GLU:O	1:B:181:ASN:HB2	1.93	0.68
1:A:106:THR:OG1	1:A:109:GLU:HG3	1.94	0.68
1:B:127:MSE:HE3	1:B:373:TRP:CB	2.22	0.68
1:B:307:ASP:OD2	1:B:310:TRP:HB2	1.94	0.68
1:B:75:GLN:HG3	1:B:120:PHE:CE2	2.29	0.67
1:A:346:ASN:HD22	1:A:346:ASN:N	1.91	0.67
1:B:82:PHE:CE2	1:B:343:ARG:HD2	2.30	0.67
1:B:125:LEU:N	1:B:125:LEU:HD23	2.11	0.66
1:A:191:ASN:N	1:A:191:ASN:HD22	1.92	0.66
1:A:405:LYS:HD2	1:B:260:THR:HG23	1.78	0.65
1:A:410:THR:H	1:A:413:GLN:HE21	1.44	0.65
1:B:191:ASN:N	1:B:191:ASN:HD22	1.93	0.65
1:B:219:ALA:HA	1:B:242:THR:OG1	1.96	0.65
1:A:125:LEU:HD11	1:A:139:ILE:HD11	1.79	0.64
1:B:125:LEU:HD11	1:B:139:ILE:HD11	1.79	0.64
1:B:346:ASN:HD22	1:B:346:ASN:N	1.95	0.64

*Continued on next page...*

*Continued from previous page...*

Atom-1	Atom-2	Interatomic distance (Å)	Clash overlap (Å)
1:B:181:ASN:ND2	1:B:186:LYS:HZ2	1.96	0.64
1:A:125:LEU:HD23	1:A:125:LEU:N	2.13	0.64
1:A:219:ALA:HA	1:A:242:THR:OG1	1.98	0.64
1:A:45:LEU:HB3	1:A:72:ALA:HB2	1.79	0.64
1:B:45:LEU:HB3	1:B:72:ALA:HB2	1.80	0.64
1:B:143:TYR:HA	1:B:145:GLN:HE22	1.63	0.64
1:A:82:PHE:CE2	1:A:343:ARG:HD2	2.33	0.64
1:B:151:ARG:HD3	1:B:376:PRO:CG	2.27	0.63
1:A:283:LEU:HD22	1:A:283:LEU:N	2.13	0.63
1:B:358:MSE:HE2	3:B:436:ADC:C4	2.29	0.63
1:A:156:GLU:O	1:A:181:ASN:HB2	1.99	0.63
1:B:426:LYS:HD3	1:B:430:TYR:CD2	2.34	0.63
1:A:426:LYS:HD3	1:A:430:TYR:CD2	2.33	0.63
1:B:29:MSE:HE1	1:B:59:GLU:HA	1.81	0.63
1:A:346:ASN:ND2	1:A:347:LEU:H	1.97	0.62
1:A:29:MSE:HE3	1:A:355:SER:HB3	1.81	0.62
1:B:29:MSE:HE1	1:B:59:GLU:HG3	1.82	0.62
1:B:125:LEU:CD2	1:B:125:LEU:H	2.11	0.62
1:B:283:LEU:N	1:B:283:LEU:HD22	2.13	0.62
1:A:215:VAL:H	1:A:270:ASN:ND2	1.97	0.62
1:A:151:ARG:HD3	1:A:376:PRO:CG	2.29	0.62
1:B:178:ILE:HG13	1:B:372:LEU:HD21	1.81	0.62
1:A:108:GLU:OE1	1:A:108:GLU:N	2.33	0.62
1:A:161:VAL:HG21	1:A:179:ASN:OD1	2.00	0.61
1:B:181:ASN:HD22	1:B:186:LYS:HZ2	1.49	0.61
1:A:49:ARG:N	1:A:126:ASN:ND2	2.48	0.60
1:B:417:LEU:CD1	1:B:419:MSE:HE2	2.31	0.60
1:B:108:GLU:N	1:B:108:GLU:OE1	2.34	0.60
1:B:410:THR:H	1:B:413:GLN:HE21	1.49	0.60
1:A:211:ILE:HG22	1:A:237:ALA:HB2	1.83	0.60
1:B:215:VAL:H	1:B:270:ASN:ND2	2.00	0.60
1:B:210:MSE:HE2	1:B:212:ALA:HB3	1.84	0.60
1:B:263:ASP:OD1	1:B:285:ARG:NH2	2.35	0.59
1:A:139:ILE:HG22	1:A:147:LEU:HD13	1.84	0.59
1:A:247:ILE:O	1:A:251:GLN:HG3	2.03	0.59
1:B:29:MSE:HE3	1:B:355:SER:HB3	1.84	0.59
1:A:49:ARG:H	1:A:126:ASN:ND2	1.99	0.59
1:A:210:MSE:HE2	1:A:212:ALA:HB3	1.85	0.59
1:A:60:THR:O	1:A:64:ILE:HG13	2.03	0.59
1:A:276:THR:CG2	1:A:277:GLY:N	2.66	0.58
1:A:125:LEU:CD2	1:A:125:LEU:H	2.14	0.58

*Continued on next page...*

*Continued from previous page...*

Atom-1	Atom-2	Interatomic distance (Å)	Clash overlap (Å)
1:A:181:ASN:ND2	1:A:186:LYS:HZ2	2.01	0.58
1:B:211:ILE:HG22	1:B:237:ALA:HB2	1.85	0.58
1:B:154:SER:OG	1:B:365:GLN:NE2	2.35	0.58
1:A:358:MSE:HE1	3:A:435:ADC:O2'	2.03	0.58
1:A:410:THR:H	1:A:413:GLN:NE2	2.01	0.58
1:B:170:ASN:O	1:B:172:ILE:HG13	2.04	0.58
1:B:42:SER:OG	1:B:44:PRO:HD3	2.04	0.58
1:A:111:LEU:HD13	1:A:111:LEU:C	2.24	0.58
1:A:263:ASP:OD1	1:A:285:ARG:NH2	2.36	0.58
1:A:42:SER:OG	1:A:44:PRO:HD3	2.04	0.58
1:A:127:MSE:CE	1:A:373:TRP:HE3	2.15	0.57
1:B:111:LEU:HD13	1:B:111:LEU:C	2.24	0.57
1:A:409:LEU:HD22	1:A:419:MSE:HE3	1.87	0.57
1:B:139:ILE:HG22	1:B:147:LEU:HD13	1.86	0.57
1:B:60:THR:O	1:B:64:ILE:HG13	2.05	0.57
1:A:22:LEU:O	1:A:26:GLU:HG3	2.04	0.57
1:A:154:SER:OG	1:A:365:GLN:NE2	2.38	0.57
1:B:276:THR:CG2	1:B:277:GLY:N	2.66	0.57
1:B:212:ALA:HB2	1:B:235:PHE:O	2.05	0.57
1:B:409:LEU:HD22	1:B:419:MSE:HE3	1.84	0.56
1:A:125:LEU:HD11	1:A:139:ILE:CD1	2.35	0.56
1:A:358:MSE:HE2	3:A:435:ADC:C4	2.35	0.56
1:A:338:LEU:HD11	1:A:341:GLU:HA	1.87	0.56
1:A:75:GLN:HE21	1:A:117:THR:HA	1.70	0.56
1:B:346:ASN:ND2	1:B:347:LEU:H	2.01	0.56
1:A:147:LEU:HB3	1:A:148:PRO:CD	2.35	0.56
1:B:303:ASP:OD1	1:B:303:ASP:O	2.22	0.56
1:A:128:ILE:HG21	1:A:136:THR:HG22	1.87	0.56
1:B:49:ARG:H	1:B:126:ASN:ND2	2.04	0.56
1:B:338:LEU:CD1	1:B:341:GLU:HA	2.36	0.56
1:B:338:LEU:HD11	1:B:341:GLU:HA	1.86	0.56
1:A:153:ILE:HB	1:A:177:ALA:HB2	1.88	0.56
1:A:155:GLU:HG2	4:A:462:HOH:O	2.05	0.56
1:A:29:MSE:HE1	1:A:59:GLU:HA	1.88	0.55
1:A:417:LEU:HD13	1:A:419:MSE:CE	2.36	0.55
1:B:410:THR:H	1:B:413:GLN:NE2	2.03	0.55
1:B:75:GLN:HE21	1:B:117:THR:HA	1.71	0.55
1:A:212:ALA:HB2	1:A:235:PHE:O	2.07	0.55
1:A:284:GLY:O	1:A:288:GLU:HG3	2.08	0.55
1:B:35:MSE:HE1	1:B:367:MSE:HG2	1.88	0.55
1:A:66:THR:O	1:A:70:LEU:HD13	2.07	0.55

*Continued on next page...*

*Continued from previous page...*

Atom-1	Atom-2	Interatomic distance (Å)	Clash overlap (Å)
1:B:56:MSE:HB3	1:B:84:THR:HG23	1.89	0.54
1:A:6:PRO:O	1:A:7:TYR:HB3	2.06	0.54
1:A:35:MSE:HE1	1:A:367:MSE:HG2	1.88	0.54
1:A:260:THR:HG23	1:B:405:LYS:HD2	1.89	0.54
1:B:49:ARG:N	1:B:126:ASN:ND2	2.52	0.54
1:A:417:LEU:CD1	1:A:419:MSE:HE2	2.34	0.54
1:B:128:ILE:HG21	1:B:136:THR:HG22	1.89	0.54
1:A:153:ILE:O	1:A:177:ALA:HA	2.07	0.54
1:B:125:LEU:HD11	1:B:139:ILE:CD1	2.37	0.54
1:A:346:ASN:HD22	1:A:347:LEU:H	1.55	0.54
1:B:363:THR:HG22	1:B:367:MSE:HE3	1.90	0.54
1:A:388:LYS:O	1:A:392:GLU:HG3	2.07	0.54
1:A:181:ASN:HD22	1:A:186:LYS:HZ2	1.54	0.54
1:A:338:LEU:CD1	1:A:341:GLU:HA	2.38	0.54
1:B:161:VAL:HG11	1:B:179:ASN:ND2	2.22	0.53
1:A:128:ILE:HD11	1:A:139:ILE:HD12	1.89	0.53
1:B:11:ASP:OD2	1:B:14:LEU:HD13	2.07	0.53
1:B:22:LEU:O	1:B:26:GLU:HG3	2.08	0.53
1:B:127:MSE:CE	1:B:373:TRP:HE3	2.18	0.53
1:B:153:ILE:O	1:B:177:ALA:HA	2.09	0.53
1:B:417:LEU:HD13	1:B:419:MSE:CE	2.36	0.53
1:B:147:LEU:HB3	1:B:148:PRO:CD	2.39	0.53
1:A:221:TYR:CD1	1:A:241:ILE:HD13	2.44	0.53
1:B:153:ILE:HB	1:B:177:ALA:HB2	1.88	0.53
1:B:221:TYR:CD1	1:B:241:ILE:HD13	2.44	0.53
1:A:56:MSE:HB3	1:A:84:THR:HG23	1.91	0.53
1:A:303:ASP:O	1:A:303:ASP:OD1	2.27	0.53
1:B:6:PRO:O	1:B:7:TYR:HB3	2.09	0.53
1:B:276:THR:HB	1:B:305:GLU:OE1	2.08	0.53
1:B:247:ILE:O	1:B:251:GLN:HG3	2.09	0.53
1:B:284:GLY:O	1:B:288:GLU:HG3	2.09	0.53
1:A:278:CYS:O	1:A:305:GLU:HG2	2.09	0.52
1:B:26:GLU:HB3	1:B:33:MSE:HE2	1.91	0.52
1:A:178:ILE:HG13	1:A:372:LEU:HD21	1.91	0.52
1:A:276:THR:HB	1:A:305:GLU:OE1	2.10	0.52
1:A:170:ASN:O	1:A:172:ILE:HG13	2.10	0.52
1:A:111:LEU:O	1:A:115:GLU:HG3	2.10	0.52
1:B:395:ALA:O	1:B:399:LEU:HD13	2.10	0.52
1:B:276:THR:HG21	1:B:281:ILE:HD11	1.93	0.51
1:B:58:VAL:HG23	1:B:85:GLN:NE2	2.26	0.51
1:B:346:ASN:HD22	1:B:347:LEU:H	1.58	0.51

*Continued on next page...*

*Continued from previous page...*

Atom-1	Atom-2	Interatomic distance (Å)	Clash overlap (Å)
1:B:66:THR:O	1:B:70:LEU:HD13	2.10	0.51
1:A:128:ILE:HG21	1:A:136:THR:CG2	2.41	0.51
1:B:278:CYS:O	1:B:305:GLU:HG2	2.10	0.51
1:A:363:THR:HG22	1:A:367:MSE:HE3	1.93	0.51
1:A:185:THR:HA	1:A:189:PHE:CD1	2.46	0.51
3:A:435:ADC:H4'	4:A:436:HOH:O	2.12	0.50
1:A:420:SER:C	1:A:422:ASP:H	2.14	0.50
1:B:46:LYS:HA	1:B:71:GLY:O	2.12	0.50
1:A:191:ASN:H	1:A:191:ASN:HD22	1.56	0.50
1:A:409:LEU:HD13	1:B:244:ILE:HD13	1.92	0.50
1:A:26:GLU:HB3	1:A:33:MSE:HE2	1.94	0.50
1:B:106:THR:HG23	1:B:109:GLU:OE1	2.12	0.50
1:A:46:LYS:HA	1:A:71:GLY:O	2.11	0.50
1:B:155:GLU:HB2	1:B:164:LEU:HD11	1.94	0.50
1:A:254:MSE:HE1	1:B:356:PHE:CE2	2.46	0.50
1:A:111:LEU:HD13	1:A:111:LEU:O	2.11	0.50
1:B:111:LEU:O	1:B:115:GLU:HG3	2.10	0.50
1:B:111:LEU:HD13	1:B:111:LEU:O	2.11	0.50
1:A:63:LEU:HD22	1:A:362:PHE:CD1	2.46	0.49
1:B:63:LEU:HD22	1:B:362:PHE:CD1	2.47	0.49
1:A:155:GLU:HB2	1:A:164:LEU:HD11	1.95	0.49
1:A:201:ASP:OD1	1:A:205:ARG:NE	2.45	0.49
1:B:136:THR:CG2	1:B:153:ILE:HD13	2.42	0.49
1:B:420:SER:C	1:B:422:ASP:H	2.14	0.49
1:B:20:LYS:CA	1:B:20:LYS:HE2	2.35	0.49
1:A:346:ASN:N	1:A:346:ASN:ND2	2.60	0.49
1:B:191:ASN:HD22	1:B:191:ASN:H	1.61	0.49
1:A:276:THR:HG21	1:A:281:ILE:HD11	1.95	0.49
1:B:26:GLU:HB3	1:B:33:MSE:CE	2.42	0.49
1:A:52:GLY:HA3	1:A:76:TRP:CE3	2.48	0.48
1:B:296:VAL:HG12	1:B:306:ILE:HD13	1.95	0.48
1:B:128:ILE:HG21	1:B:136:THR:CG2	2.44	0.48
1:A:296:VAL:HG12	1:A:306:ILE:HD13	1.95	0.48
1:A:54:LEU:O	1:A:55:HIS:C	2.51	0.48
1:A:59:GLU:CD	1:A:59:GLU:H	2.16	0.48
1:B:177:ALA:O	1:B:383:VAL:HA	2.13	0.48
1:A:426:LYS:HD3	1:A:430:TYR:CE2	2.49	0.48
1:A:143:TYR:N	1:A:144:PRO:CD	2.77	0.48
1:B:186:LYS:C	1:B:186:LYS:HD3	2.34	0.48
1:A:346:ASN:ND2	1:A:347:LEU:N	2.62	0.48
1:A:179:ASN:ND2	1:A:182:ASP:HB2	2.29	0.48

*Continued on next page...*



*Continued from previous page...*

Atom-1	Atom-2	Interatomic distance (Å)	Clash overlap (Å)
1:B:185:THR:HA	1:B:189:PHE:CD1	2.49	0.48
1:A:395:ALA:O	1:A:399:LEU:HD13	2.14	0.48
1:A:58:VAL:HG23	1:A:85:GLN:NE2	2.29	0.48
1:A:11:ASP:OD2	1:A:14:LEU:HD13	2.13	0.48
1:A:20:LYS:HE2	1:A:20:LYS:CA	2.36	0.47
1:A:173:LEU:HD13	1:A:175:VAL:H	1.78	0.47
1:B:58:VAL:H	1:B:85:GLN:HE22	1.62	0.47
1:B:52:GLY:HA3	1:B:76:TRP:CE3	2.49	0.47
1:A:221:TYR:CZ	1:A:226:LYS:HG2	2.49	0.47
1:B:389:LYS:NZ	1:B:423:GLY:HA2	2.30	0.47
1:A:244:ILE:HD13	1:B:409:LEU:HD13	1.95	0.47
1:B:221:TYR:CZ	1:B:226:LYS:HG2	2.49	0.47
1:A:405:LYS:HD2	1:B:260:THR:CG2	2.45	0.47
1:A:163:ASN:O	1:A:167:MSE:HG3	2.14	0.47
1:B:54:LEU:O	1:B:55:HIS:C	2.53	0.47
1:A:134:ASP:HB2	4:A:444:HOH:O	2.15	0.47
1:B:128:ILE:HD11	1:B:139:ILE:HD12	1.96	0.47
1:A:303:ASP:HB3	1:A:343:ARG:HG2	1.97	0.47
1:B:7:TYR:CD1	1:B:7:TYR:C	2.88	0.47
1:B:201:ASP:OD1	1:B:205:ARG:NE	2.47	0.47
1:A:425:PHE:O	1:A:426:LYS:HG3	2.15	0.47
1:B:191:ASN:ND2	1:B:191:ASN:N	2.63	0.46
1:A:186:LYS:C	1:A:186:LYS:HD3	2.36	0.46
1:B:181:ASN:HA	1:B:186:LYS:HD2	1.98	0.46
1:A:54:LEU:HD11	1:A:362:PHE:HE1	1.79	0.46
1:A:136:THR:CG2	1:A:153:ILE:HD13	2.45	0.46
1:A:155:GLU:O	1:A:180:VAL:HB	2.14	0.46
1:B:100:TYR:O	1:B:113:CYS:HB3	2.15	0.46
1:B:48:ALA:HA	1:B:126:ASN:HD22	1.79	0.46
1:A:132:GLY:N	1:A:155:GLU:OE2	2.48	0.46
1:A:185:THR:HA	1:A:189:PHE:CE1	2.51	0.46
1:A:356:PHE:CE2	1:B:254:MSE:HE1	2.50	0.46
1:B:388:LYS:O	1:B:392:GLU:HG3	2.16	0.46
1:A:106:THR:HG23	1:A:109:GLU:OE1	2.16	0.46
1:A:139:ILE:HD13	1:A:150:ILE:HD11	1.98	0.46
1:B:343:ARG:HH11	1:B:343:ARG:HG3	1.80	0.46
1:B:54:LEU:HD11	1:B:362:PHE:HE1	1.80	0.46
1:B:426:LYS:HD3	1:B:430:TYR:CE2	2.51	0.46
1:B:147:LEU:C	1:B:149:GLY:H	2.19	0.46
1:B:32:LEU:HD21	1:B:362:PHE:HB3	1.98	0.46
1:A:26:GLU:HB3	1:A:33:MSE:CE	2.46	0.46

*Continued on next page...*

*Continued from previous page...*

Atom-1	Atom-2	Interatomic distance (Å)	Clash overlap (Å)
1:B:262:MSE:HE1	1:B:272:PHE:CD2	2.52	0.45
1:B:358:MSE:HE2	3:B:436:ADC:N3	2.30	0.45
1:B:321:ILE:HD12	1:B:321:ILE:N	2.31	0.45
1:B:409:LEU:HD21	1:B:419:MSE:CE	2.40	0.45
1:B:39:TYR:CD1	1:B:44:PRO:HG3	2.51	0.45
1:A:199:LEU:HD22	1:A:228:CYS:SG	2.56	0.45
1:A:177:ALA:O	1:A:383:VAL:HA	2.16	0.45
1:A:389:LYS:NZ	1:A:423:GLY:HA2	2.32	0.45
1:B:139:ILE:HD13	1:B:150:ILE:HD11	1.98	0.45
1:A:173:LEU:HD13	1:A:173:LEU:C	2.37	0.45
1:B:338:LEU:HD13	1:B:339:LEU:N	2.31	0.45
1:B:81:ILE:HG22	1:B:110:TYR:HB2	1.98	0.45
1:A:144:PRO:O	1:A:147:LEU:HB2	2.17	0.45
1:A:178:ILE:HG21	1:A:386:LEU:HD13	1.99	0.45
1:B:163:ASN:O	1:B:167:MSE:HG3	2.17	0.45
1:A:147:LEU:C	1:A:149:GLY:H	2.20	0.45
1:B:173:LEU:HD13	1:B:175:VAL:H	1.81	0.45
1:B:303:ASP:HB3	1:B:343:ARG:HG2	1.99	0.45
1:A:127:MSE:HE3	1:A:373:TRP:CA	2.47	0.45
1:A:181:ASN:HA	1:A:186:LYS:HD2	1.98	0.45
1:B:19:ARG:HA	1:B:19:ARG:HD3	1.72	0.45
1:B:346:ASN:ND2	1:B:346:ASN:N	2.63	0.45
1:A:420:SER:C	1:A:422:ASP:N	2.69	0.45
1:A:244:ILE:CD1	1:B:409:LEU:HD13	2.47	0.45
1:A:63:LEU:HD13	1:A:362:PHE:HB3	1.99	0.45
1:A:112:TRP:O	1:A:116:GLN:HG2	2.17	0.45
1:B:358:MSE:CE	3:B:436:ADC:C4	2.95	0.44
1:B:426:LYS:HD3	1:B:430:TYR:CG	2.52	0.44
1:A:426:LYS:HD3	1:A:430:TYR:CG	2.52	0.44
1:B:54:LEU:HD23	1:B:54:LEU:C	2.38	0.44
1:A:254:MSE:HE1	1:B:356:PHE:HE2	1.81	0.44
1:B:420:SER:C	1:B:422:ASP:N	2.71	0.44
1:A:48:ALA:HA	1:A:126:ASN:HD22	1.83	0.44
1:A:198:SER:HB2	1:A:346:ASN:HB2	1.99	0.44
1:B:178:ILE:HG21	1:B:386:LEU:HD13	1.99	0.44
1:A:14:LEU:HB3	1:A:87:HIS:HA	2.00	0.44
1:A:7:TYR:CD1	1:A:7:TYR:C	2.90	0.44
1:B:198:SER:HB2	1:B:346:ASN:HB2	2.00	0.44
1:A:338:LEU:HD13	1:A:339:LEU:N	2.32	0.44
1:B:35:MSE:CE	1:B:367:MSE:HG2	2.47	0.44
1:B:112:TRP:O	1:B:116:GLN:HG2	2.18	0.44

*Continued on next page...*

*Continued from previous page...*

Atom-1	Atom-2	Interatomic distance (Å)	Clash overlap (Å)
1:B:143:TYR:N	1:B:144:PRO:CD	2.80	0.44
1:B:155:GLU:O	1:B:180:VAL:HB	2.17	0.44
1:A:346:ASN:O	1:A:350:ALA:HB3	2.17	0.44
1:A:343:ARG:HG3	1:A:343:ARG:HH11	1.83	0.44
1:B:202:GLY:HA2	1:B:350:ALA:HB2	1.98	0.43
1:A:254:MSE:CE	1:B:356:PHE:HE2	2.31	0.43
1:B:425:PHE:O	1:B:426:LYS:HG3	2.18	0.43
1:A:387:PRO:CD	1:A:390:LEU:HD12	2.45	0.43
1:A:191:ASN:N	1:A:191:ASN:ND2	2.63	0.43
1:B:346:ASN:ND2	1:B:347:LEU:N	2.65	0.43
1:A:161:VAL:HG11	1:A:179:ASN:ND2	2.33	0.43
1:A:19:ARG:HA	1:A:19:ARG:HD3	1.79	0.43
1:A:81:ILE:HG22	1:A:110:TYR:HB2	1.99	0.43
1:B:344:LEU:HD23	1:B:344:LEU:N	2.33	0.43
1:A:410:THR:HG23	1:A:413:GLN:NE2	2.33	0.43
1:A:200:ILE:HD11	1:A:232:LEU:HD23	2.00	0.43
1:B:4:LYS:NZ	1:B:119:TYR:O	2.52	0.43
1:A:127:MSE:CE	1:A:373:TRP:HA	2.49	0.43
1:A:165:TYR:CD1	1:A:383:VAL:HG11	2.53	0.43
1:B:32:LEU:HD21	1:B:362:PHE:CB	2.49	0.43
1:B:363:THR:CG2	1:B:367:MSE:HE3	2.48	0.43
1:A:158:THR:HB	2:A:433:NAD:H2D	2.01	0.43
1:B:185:THR:HA	1:B:189:PHE:CE1	2.53	0.43
1:A:32:LEU:HD21	1:A:362:PHE:HB3	2.01	0.43
1:A:39:TYR:CD1	1:A:44:PRO:HG3	2.53	0.42
1:B:199:LEU:HD22	1:B:228:CYS:SG	2.59	0.42
1:A:260:THR:HG22	1:A:261:THR:N	2.25	0.42
1:A:80:ASN:ND2	1:A:344:LEU:CD2	2.82	0.42
1:B:200:ILE:HD11	1:B:232:LEU:HD23	2.01	0.42
1:A:283:LEU:N	1:A:283:LEU:CD2	2.82	0.42
1:A:202:GLY:HA2	1:A:350:ALA:HB2	2.00	0.42
1:A:363:THR:CG2	1:A:367:MSE:HE3	2.48	0.42
1:B:145:GLN:HE21	1:B:145:GLN:H	1.64	0.42
1:B:338:LEU:HD13	1:B:338:LEU:C	2.40	0.42
1:A:54:LEU:C	1:A:54:LEU:HD23	2.39	0.42
1:B:165:TYR:CD1	1:B:383:VAL:HG11	2.54	0.42
1:A:165:TYR:CE1	1:A:383:VAL:HG11	2.54	0.42
1:A:205:ARG:NH1	1:A:351:MSE:HG2	2.34	0.42
1:A:319:VAL:HG23	1:A:327:ARG:HB3	2.02	0.42
1:A:184:VAL:HG21	1:A:432:TYR:CE1	2.55	0.42
1:B:59:GLU:CD	1:B:59:GLU:H	2.22	0.42

*Continued on next page...*

*Continued from previous page...*

Atom-1	Atom-2	Interatomic distance (Å)	Clash overlap (Å)
1:B:80:ASN:ND2	1:B:344:LEU:HD21	2.35	0.42
1:A:102:TRP:CE2	1:A:105:GLU:HG2	2.55	0.42
1:B:321:ILE:HG22	1:B:322:LYS:HG2	2.02	0.42
1:B:276:THR:CG2	1:B:277:GLY:H	2.32	0.42
1:A:22:LEU:HD22	1:A:61:ALA:HB3	2.02	0.42
1:B:132:GLY:N	1:B:155:GLU:OE2	2.49	0.42
1:B:133:GLY:O	1:B:137:ASN:HB2	2.19	0.42
1:B:20:LYS:CE	1:B:20:LYS:HA	2.38	0.41
1:B:14:LEU:HB3	1:B:87:HIS:HA	2.01	0.41
1:B:80:ASN:ND2	1:B:344:LEU:CD2	2.83	0.41
1:A:321:ILE:N	1:A:321:ILE:HD12	2.34	0.41
1:B:140:HIS:CE1	1:B:147:LEU:HD11	2.55	0.41
1:A:245:ASP:HB3	1:A:248:ASN:HD22	1.86	0.41
1:A:19:ARG:O	1:A:20:LYS:C	2.58	0.41
1:A:80:ASN:HB3	1:A:83:SER:OG	2.19	0.41
1:B:161:VAL:CG1	1:B:165:TYR:CE2	3.04	0.41
1:B:55:HIS:CE1	1:B:347:LEU:HD13	2.55	0.41
1:B:53:CYS:O	1:B:79:CYS:HB3	2.19	0.41
1:B:92:ILE:HG22	1:B:99:VAL:CG2	2.51	0.41
1:B:165:TYR:CE1	1:B:383:VAL:HG11	2.56	0.41
1:B:178:ILE:CG1	1:B:372:LEU:HD21	2.47	0.41
1:A:133:GLY:O	1:A:137:ASN:HB2	2.20	0.41
1:A:404:VAL:HG13	1:B:259:VAL:CB	2.37	0.41
1:B:179:ASN:ND2	1:B:182:ASP:HB2	2.36	0.41
1:B:346:ASN:O	1:B:350:ALA:HB3	2.20	0.41
1:B:63:LEU:HD13	1:B:362:PHE:HB3	2.02	0.41
1:A:4:LYS:NZ	1:A:119:TYR:O	2.54	0.41
1:B:299:ILE:O	1:B:299:ILE:HG12	2.21	0.41
1:A:262:MSE:HE1	1:A:272:PHE:CD2	2.56	0.41
1:B:410:THR:HG23	1:B:413:GLN:NE2	2.35	0.41
1:A:417:LEU:HD11	1:B:278:CYS:HB3	2.03	0.41
1:B:125:LEU:CD2	1:B:125:LEU:N	2.78	0.41
1:B:158:THR:HB	2:B:434:NAD:H2D	2.03	0.41
1:B:387:PRO:CD	1:B:390:LEU:HD12	2.47	0.41
1:A:301:HIS:ND1	4:A:436:HOH:O	2.37	0.41
1:B:102:TRP:CE2	1:B:105:GLU:HG2	2.56	0.41
1:B:184:VAL:HG21	1:B:432:TYR:CE1	2.56	0.41
1:A:409:LEU:HD11	1:A:417:LEU:HD12	2.03	0.41
1:A:35:MSE:CE	1:A:367:MSE:HG2	2.50	0.41
1:A:347:LEU:HD23	1:A:352:GLY:HA3	2.03	0.40
1:B:54:LEU:HB3	1:B:76:TRP:HZ2	1.86	0.40

*Continued on next page...*

Continued from previous page...

Atom-1	Atom-2	Interatomic distance (Å)	Clash overlap (Å)
1:B:80:ASN:HB3	1:B:83:SER:OG	2.20	0.40
1:B:190:ASP:C	1:B:190:ASP:OD1	2.59	0.40
1:A:292:ASP:N	1:A:334:ARG:HD2	2.36	0.40
1:B:292:ASP:N	1:B:334:ARG:HD2	2.36	0.40
1:A:276:THR:CG2	1:A:277:GLY:H	2.33	0.40
1:A:409:LEU:HD13	1:B:244:ILE:CD1	2.51	0.40
1:B:241:ILE:O	1:B:259:VAL:HA	2.21	0.40
1:B:390:LEU:O	1:B:393:ALA:HB3	2.21	0.40

All (2) symmetry-related close contacts are listed below. The label for Atom-2 includes the symmetry operator and encoded unit-cell translations to be applied.

Atom-1	Atom-2	Interatomic distance (Å)	Clash overlap (Å)
4:B:446:HOH:O	4:B:446:HOH:O[6_555]	2.05	0.15
1:B:201:ASP:OD1	4:B:446:HOH:O[6_555]	2.19	0.01

## 5.3 Torsion angles [i](#)

### 5.3.1 Protein backbone [i](#)

In the following table, the Percentiles column shows the percent Ramachandran outliers of the chain as a percentile score with respect to all X-ray entries followed by that with respect to entries of similar resolution.

The Analysed column shows the number of residues for which the backbone conformation was analysed, and the total number of residues.

Mol	Chain	Analysed	Favoured	Allowed	Outliers	Percentiles	
1	A	429/432 (99%)	389 (91%)	35 (8%)	5 (1%)	16	47
1	B	428/432 (99%)	387 (90%)	35 (8%)	6 (1%)	14	42
All	All	857/864 (99%)	776 (90%)	70 (8%)	11 (1%)	15	44

All (11) Ramachandran outliers are listed below:

Mol	Chain	Res	Type
1	A	7	TYR
1	B	7	TYR
1	B	55	HIS
1	A	55	HIS

Continued on next page...

*Continued from previous page...*

Mol	Chain	Res	Type
1	A	185	THR
1	A	344	LEU
1	B	4	LYS
1	B	185	THR
1	B	344	LEU
1	A	423	GLY
1	B	423	GLY

### 5.3.2 Protein sidechains ⓘ

In the following table, the Percentiles column shows the percent sidechain outliers of the chain as a percentile score with respect to all X-ray entries followed by that with respect to entries of similar resolution.

The Analysed column shows the number of residues for which the sidechain conformation was analysed, and the total number of residues.

Mol	Chain	Analysed	Rotameric	Outliers	Percentiles	
1	A	355/340 (104%)	338 (95%)	17 (5%)	31	66
1	B	354/340 (104%)	337 (95%)	17 (5%)	31	66
All	All	709/680 (104%)	675 (95%)	34 (5%)	31	66

All (34) residues with a non-rotameric sidechain are listed below:

Mol	Chain	Res	Type
1	A	27	ASN
1	A	33	MSE
1	A	125	LEU
1	A	135	LEU
1	A	155	GLU
1	A	190	ASP
1	A	191	ASN
1	A	260	THR
1	A	278	CYS
1	A	283	LEU
1	A	344	LEU
1	A	346	ASN
1	A	377	ASP
1	A	386	LEU
1	A	411	GLU
1	A	422	ASP

*Continued on next page...*

*Continued from previous page...*

Mol	Chain	Res	Type
1	A	424	PRO
1	B	27	ASN
1	B	33	MSE
1	B	125	LEU
1	B	135	LEU
1	B	145	GLN
1	B	155	GLU
1	B	191	ASN
1	B	260	THR
1	B	278	CYS
1	B	283	LEU
1	B	344	LEU
1	B	346	ASN
1	B	377	ASP
1	B	386	LEU
1	B	411	GLU
1	B	422	ASP
1	B	424	PRO

Some sidechains can be flipped to improve hydrogen bonding and reduce clashes. All (36) such sidechains are listed below:

Mol	Chain	Res	Type
1	A	27	ASN
1	A	75	GLN
1	A	85	GLN
1	A	126	ASN
1	A	145	GLN
1	A	181	ASN
1	A	191	ASN
1	A	248	ASN
1	A	251	GLN
1	A	267	GLN
1	A	270	ASN
1	A	324	GLN
1	A	346	ASN
1	A	353	HIS
1	A	360	ASN
1	A	365	GLN
1	A	369	GLN
1	A	413	GLN
1	B	27	ASN
1	B	75	GLN

*Continued on next page...*

*Continued from previous page...*

Mol	Chain	Res	Type
1	B	85	GLN
1	B	126	ASN
1	B	145	GLN
1	B	181	ASN
1	B	191	ASN
1	B	248	ASN
1	B	251	GLN
1	B	267	GLN
1	B	270	ASN
1	B	324	GLN
1	B	346	ASN
1	B	353	HIS
1	B	360	ASN
1	B	365	GLN
1	B	369	GLN
1	B	413	GLN

### 5.3.3 RNA [i](#)

There are no RNA molecules in this entry.

## 5.4 Non-standard residues in protein, DNA, RNA chains [i](#)

There are no non-standard protein/DNA/RNA residues in this entry.

## 5.5 Carbohydrates [i](#)

There are no carbohydrates in this entry.

## 5.6 Ligand geometry [i](#)

4 ligands are modelled in this entry.

In the following table, the Counts columns list the number of bonds (or angles) for which Mogul statistics could be retrieved, the number of bonds (or angles) that are observed in the model and the number of bonds (or angles) that are defined in the chemical component dictionary. The Link column lists molecule types, if any, to which the group is linked. The Z score for a bond length (or angle) is the number of standard deviations the observed value is removed from the expected value. A bond length (or angle) with  $|Z| > 2$  is considered an outlier worth inspection. RMSZ is the root-mean-square of all Z scores of the bond lengths (or angles).



Mol	Type	Chain	Res	Link	Bond lengths			Bond angles		
					Counts	RMSZ	# Z  > 2	Counts	RMSZ	# Z  > 2
2	NAD	A	433	-	38,48,48	2.52	12 (31%)	47,73,73	3.26	22 (46%)
3	ADC	A	435	-	14,19,19	3.09	4 (28%)	10,28,28	3.66	2 (20%)
2	NAD	B	434	-	38,48,48	2.61	12 (31%)	47,73,73	3.28	20 (42%)
3	ADC	B	436	-	14,19,19	3.30	5 (35%)	10,28,28	3.96	3 (30%)

In the following table, the Chirals column lists the number of chiral outliers, the number of chiral centers analysed, the number of these observed in the model and the number defined in the chemical component dictionary. Similar counts are reported in the Torsion and Rings columns. '-' means no outliers of that kind were identified.

Mol	Type	Chain	Res	Link	Chirals	Torsions	Rings
2	NAD	A	433	-	-	0/22/62/62	0/5/5/5
3	ADC	A	435	-	-	0/0/17/17	0/3/3/3
2	NAD	B	434	-	-	0/22/62/62	0/5/5/5
3	ADC	B	436	-	1/1/3/5	0/0/17/17	0/3/3/3

All (33) bond length outliers are listed below:

Mol	Chain	Res	Type	Atoms	Z	Observed(Å)	Ideal(Å)
3	B	436	ADC	O3'-C3'	-11.00	1.20	1.43
3	A	435	ADC	O3'-C3'	-10.52	1.21	1.43
2	B	434	NAD	O4B-C1B	-3.62	1.36	1.41
2	A	433	NAD	O4B-C1B	-3.27	1.37	1.41
3	B	436	ADC	C3'-C4'	-3.26	1.47	1.50
2	B	434	NAD	O3D-C3D	-2.78	1.36	1.43
2	A	433	NAD	O2B-C2B	-2.44	1.37	1.43
2	A	433	NAD	PN-O1N	-2.38	1.42	1.51
2	A	433	NAD	O3D-C3D	-2.22	1.37	1.43
2	B	434	NAD	O2B-C2B	-2.16	1.37	1.43
2	B	434	NAD	PN-O1N	-2.11	1.43	1.51
3	A	435	ADC	C3'-C4'	-2.06	1.48	1.50
3	B	436	ADC	C8-N7	-2.05	1.30	1.34
3	B	436	ADC	C4-N3	2.08	1.38	1.35
3	A	435	ADC	C2-N3	2.09	1.35	1.32
3	A	435	ADC	C4-N3	2.19	1.38	1.35
3	B	436	ADC	C2-N3	2.35	1.36	1.32
2	A	433	NAD	C4N-C3N	2.37	1.43	1.39
2	A	433	NAD	C3D-C4D	2.54	1.59	1.53
2	B	434	NAD	C3D-C4D	2.60	1.60	1.53
2	B	434	NAD	C4N-C3N	2.76	1.44	1.39
2	A	433	NAD	O4D-C4D	3.19	1.52	1.45

*Continued on next page...*

*Continued from previous page...*

Mol	Chain	Res	Type	Atoms	Z	Observed(Å)	Ideal(Å)
2	B	434	NAD	O4D-C4D	3.47	1.53	1.45
2	B	434	NAD	C5N-C4N	3.74	1.46	1.38
2	A	433	NAD	C5N-C4N	3.79	1.46	1.38
2	A	433	NAD	C7N-N7N	4.01	1.41	1.33
2	B	434	NAD	C7N-N7N	4.12	1.41	1.33
2	A	433	NAD	C4A-N3A	5.51	1.43	1.35
2	B	434	NAD	C4A-N3A	6.01	1.44	1.35
2	A	433	NAD	C2A-N3A	6.64	1.43	1.32
2	B	434	NAD	C2A-N3A	6.81	1.44	1.32
2	B	434	NAD	C3N-C7N	7.67	1.62	1.50
2	A	433	NAD	C3N-C7N	7.78	1.62	1.50

All (47) bond angle outliers are listed below:

Mol	Chain	Res	Type	Atoms	Z	Observed(°)	Ideal(°)
2	B	434	NAD	N3A-C2A-N1A	-9.20	121.85	128.89
2	A	433	NAD	N3A-C2A-N1A	-9.00	122.00	128.89
2	A	433	NAD	O3-PA-O5B	-8.20	81.18	102.94
2	B	434	NAD	O3-PA-O5B	-8.11	81.43	102.94
2	A	433	NAD	O5D-PN-O1N	-6.35	84.96	109.62
2	B	434	NAD	O5D-PN-O1N	-6.27	85.27	109.62
2	A	433	NAD	O2N-PN-O5D	-5.74	79.53	108.46
2	B	434	NAD	O2N-PN-O5D	-5.59	80.25	108.46
2	B	434	NAD	C5N-C4N-C3N	-5.59	113.30	120.33
2	B	434	NAD	C3N-C2N-N1N	-5.52	114.00	120.36
2	A	433	NAD	C3N-C2N-N1N	-5.50	114.03	120.36
2	A	433	NAD	C5N-C4N-C3N	-5.44	113.50	120.33
2	B	434	NAD	O2A-PA-O3	-5.20	81.48	105.09
2	A	433	NAD	O2A-PA-O3	-5.14	81.79	105.09
2	B	434	NAD	O3-PN-O5D	-4.66	90.56	102.94
2	A	433	NAD	O3-PN-O5D	-4.10	92.05	102.94
2	B	434	NAD	C2N-C3N-C7N	-3.10	110.30	119.31
2	A	433	NAD	C2N-C3N-C7N	-3.02	110.55	119.31
2	A	433	NAD	O3D-C3D-C4D	-2.38	103.92	111.05
2	B	434	NAD	O3D-C3D-C4D	-2.38	103.92	111.05
2	A	433	NAD	C5N-C6N-N1N	-2.30	116.50	120.47
2	B	434	NAD	O4D-C4D-C3D	-2.26	100.59	105.15
3	B	436	ADC	O2'-C2'-C3'	-2.21	106.39	112.39
2	B	434	NAD	C5N-C6N-N1N	-2.11	116.81	120.47
2	A	433	NAD	O4D-C4D-C3D	-2.09	100.94	105.15
2	A	433	NAD	O7N-C7N-C3N	-2.06	117.34	119.59
2	B	434	NAD	O5B-C5B-C4B	2.04	116.64	109.12

*Continued on next page...*

*Continued from previous page...*

Mol	Chain	Res	Type	Atoms	Z	Observed(°)	Ideal(°)
2	A	433	NAD	O5B-C5B-C4B	2.17	117.14	109.12
2	A	433	NAD	C6N-C5N-C4N	2.31	122.93	119.44
2	A	433	NAD	PN-O3-PA	2.63	140.12	132.73
2	B	434	NAD	C2B-C3B-C4B	2.70	108.15	102.61
2	B	434	NAD	PN-O3-PA	2.75	140.45	132.73
2	A	433	NAD	C2B-C3B-C4B	2.76	108.28	102.61
2	B	434	NAD	O2N-PN-O1N	2.80	127.68	112.53
2	A	433	NAD	O5D-C5D-C4D	2.83	119.54	109.12
2	A	433	NAD	O2N-PN-O1N	2.95	128.52	112.53
2	B	434	NAD	O5D-C5D-C4D	3.07	120.45	109.12
2	A	433	NAD	O2A-PA-O1A	3.21	129.93	112.53
2	B	434	NAD	O2A-PA-O1A	3.32	130.53	112.53
2	A	433	NAD	C2A-N1A-C6A	4.16	126.21	118.77
2	B	434	NAD	C2A-N1A-C6A	4.19	126.25	118.77
3	A	435	ADC	O3'-C3'-C2'	4.29	122.87	113.78
3	B	436	ADC	O3'-C3'-C2'	4.93	124.23	113.78
2	A	433	NAD	C2N-C3N-C4N	6.98	126.06	118.29
2	B	434	NAD	C2N-C3N-C4N	7.23	126.34	118.29
3	A	435	ADC	O3'-C3'-C4'	10.03	127.44	110.83
3	B	436	ADC	O3'-C3'-C4'	10.68	128.53	110.83

All (1) chirality outliers are listed below:

Mol	Chain	Res	Type	Atom
3	B	436	ADC	C3'

There are no torsion outliers.

There are no ring outliers.

4 monomers are involved in 10 short contacts:

Mol	Chain	Res	Type	Clashes	Symm-Clashes
2	A	433	NAD	2	0
3	A	435	ADC	3	0
2	B	434	NAD	2	0
3	B	436	ADC	3	0

## 5.7 Other polymers ⓘ

There are no such residues in this entry.

## 5.8 Polymer linkage issues ⓘ

There are no chain breaks in this entry.

## 6 Fit of model and data [i](#)

### 6.1 Protein, DNA and RNA chains [i](#)

In the following table, the column labelled ‘#RSRZ> 2’ contains the number (and percentage) of RSRZ outliers, followed by percent RSRZ outliers for the chain as percentile scores relative to all X-ray entries and entries of similar resolution. The OWAB column contains the minimum, median, 95<sup>th</sup> percentile and maximum values of the occupancy-weighted average B-factor per residue. The column labelled ‘Q< 0.9’ lists the number of (and percentage) of residues with an average occupancy less than 0.9.

Mol	Chain	Analysed	<RSRZ>	#RSRZ>2	OWAB(Å <sup>2</sup> )	Q<0.9
1	A	416/432 (96%)	-0.25	1 (0%) 95 94	2, 17, 27, 43	0
1	B	415/432 (96%)	-0.05	1 (0%) 95 94	7, 27, 39, 47	0
All	All	831/864 (96%)	-0.15	2 (0%) 95 94	2, 20, 36, 47	0

All (2) RSRZ outliers are listed below:

Mol	Chain	Res	Type	RSRZ
1	A	2	SER	4.6
1	B	5	LEU	2.3

### 6.2 Non-standard residues in protein, DNA, RNA chains [i](#)

There are no non-standard protein/DNA/RNA residues in this entry.

### 6.3 Carbohydrates [i](#)

There are no carbohydrates in this entry.

### 6.4 Ligands [i](#)

In the following table, the Atoms column lists the number of modelled atoms in the group and the number defined in the chemical component dictionary. LLDF column lists the quality of electron density of the group with respect to its neighbouring residues in protein, DNA or RNA chains. The B-factors column lists the minimum, median, 95<sup>th</sup> percentile and maximum values of B factors of atoms in the group. The column labelled ‘Q< 0.9’ lists the number of atoms with occupancy less than 0.9.

Mol	Type	Chain	Res	Atoms	RSCC	RSR	LLDF	B-factors(Å <sup>2</sup> )	Q<0.9
3	ADC	B	436	17/17	0.95	0.18	0.86	42,43,45,45	0

*Continued on next page...*

*Continued from previous page...*

Mol	Type	Chain	Res	Atoms	RSCC	RSR	LLDF	B-factors( $\text{\AA}^2$ )	Q<0.9
2	NAD	A	433	44/44	0.95	0.17	0.35	13,15,18,21	0
2	NAD	B	434	44/44	0.94	0.17	0.10	14,17,22,23	0
3	ADC	A	435	17/17	0.96	0.15	0.03	13,15,17,17	0

## 6.5 Other polymers [i](#)

There are no such residues in this entry.