



Full wwPDB X-ray Structure Validation Report ⓘ

Feb 19, 2016 – 09:26 PM GMT

PDB ID : 5AB9
Title : Structure of the p53 cancer mutant Y220C with bound small molecule 7-ethyl-3-(piperidin-4-yl)-1H-indole
Authors : Joerger, A.C.
Deposited on : 2015-08-04
Resolution : 1.36 Å(reported)

This is a Full wwPDB X-ray Structure Validation Report for a publicly released PDB entry.
We welcome your comments at validation@mail.wwpdb.org
A user guide is available at
<http://wwpdb.org/validation/2016/XrayValidationReportHelp>
with specific help available everywhere you see the ⓘ symbol.

The following versions of software and data (see [references ⓘ](#)) were used in the production of this report:

MolProbity : 4.02b-467
Mogul : 1.7.1 (RC1), CSD as537be (2016)
Xtriage (Phenix) : 1.9-1692
EDS : rb-20026982
Percentile statistics : 20151230.v01 (using entries in the PDB archive December 30th 2015)
Refmac : 5.8.0135
CCP4 : 6.5.0
Ideal geometry (proteins) : Engh & Huber (2001)
Ideal geometry (DNA, RNA) : Parkinson et al. (1996)
Validation Pipeline (wwPDB-VP) : rb-20026982

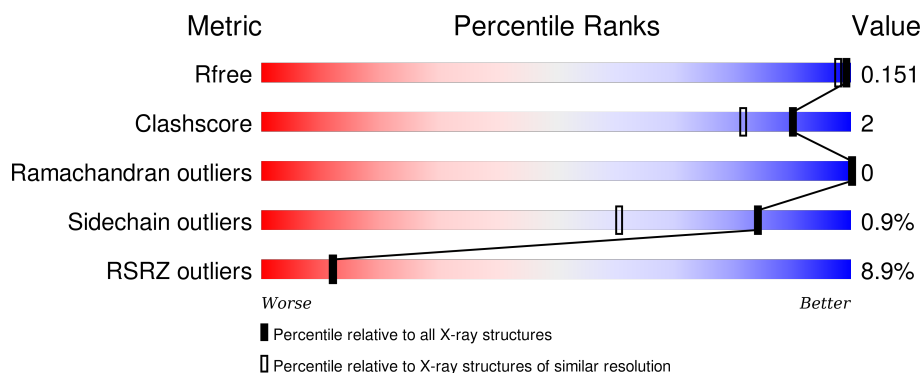
1 Overall quality at a glance

The following experimental techniques were used to determine the structure:

X-RAY DIFFRACTION

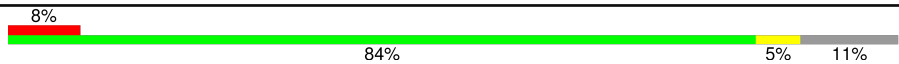
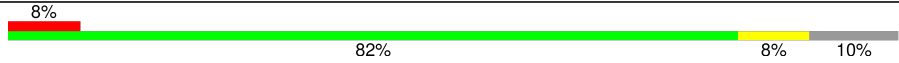
The reported resolution of this entry is 1.36 Å.

Percentile scores (ranging between 0-100) for global validation metrics of the entry are shown in the following graphic. The table shows the number of entries on which the scores are based.



Metric	Whole archive (#Entries)	Similar resolution (#Entries, resolution range(Å))
R_{free}	91344	2199 (1.40-1.32)
Clashscore	102246	2337 (1.40-1.32)
Ramachandran outliers	100387	2280 (1.40-1.32)
Sidechain outliers	100360	2279 (1.40-1.32)
RSRZ outliers	91569	2199 (1.40-1.32)

The table below summarises the geometric issues observed across the polymeric chains and their fit to the electron density. The red, orange, yellow and green segments on the lower bar indicate the fraction of residues that contain outliers for ≥ 3 , 2, 1 and 0 types of geometric quality criteria. A grey segment represents the fraction of residues that are not modelled. The numeric value for each fraction is indicated below the corresponding segment, with a dot representing fractions $\leq 5\%$. The upper red bar (where present) indicates the fraction of residues that have poor fit to the electron density. The numeric value is given above the bar.

Mol	Chain	Length	Quality of chain
1	A	219	
1	B	219	

The following table lists non-polymeric compounds, carbohydrate monomers and non-standard residues in protein, DNA, RNA chains that are outliers for geometric or electron-density-fit criteria:

Mol	Type	Chain	Res	Chirality	Geometry	Clashes	Electron density
3	PEG	A	1291	-	-	-	X
4	92O	A	1293	-	-	-	X
4	92O	B	1293	-	-	-	X

2 Entry composition

There are 5 unique types of molecules in this entry. The entry contains 3684 atoms, of which 0 are hydrogens and 0 are deuteriums.

In the tables below, the ZeroOcc column contains the number of atoms modelled with zero occupancy, the AltConf column contains the number of residues with at least one atom in alternate conformation and the Trace column contains the number of residues modelled with at most 2 atoms.

- Molecule 1 is a protein called CELLULAR TUMOR ANTIGEN P53.

Mol	Chain	Residues	Atoms					ZeroOcc	AltConf	Trace
1	A	195	Total	C	N	O	S	0	13	0
			1597	993	292	293	19			
1	B	197	Total	C	N	O	S	0	11	0
			1590	986	287	298	19			

There are 10 discrepancies between the modelled and reference sequences:

Chain	Residue	Modelled	Actual	Comment	Reference
A	133	LEU	MET	ENGINEERED MUTATION	UNP P04637
A	203	ALA	VAL	ENGINEERED MUTATION	UNP P04637
A	220	CYS	TYR	ENGINEERED MUTATION	UNP P04637
A	239	TYR	ASN	ENGINEERED MUTATION	UNP P04637
A	268	ASP	ASN	ENGINEERED MUTATION	UNP P04637
B	133	LEU	MET	ENGINEERED MUTATION	UNP P04637
B	203	ALA	VAL	ENGINEERED MUTATION	UNP P04637
B	220	CYS	TYR	ENGINEERED MUTATION	UNP P04637
B	239	TYR	ASN	ENGINEERED MUTATION	UNP P04637
B	268	ASP	ASN	ENGINEERED MUTATION	UNP P04637

- Molecule 2 is ZINC ION (three-letter code: ZN) (formula: Zn).

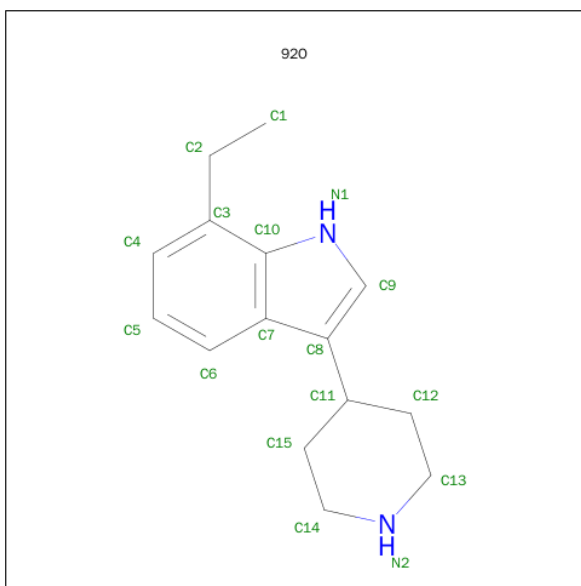
Mol	Chain	Residues	Atoms		ZeroOcc	AltConf
2	B	1	Total	Zn	0	0
			1	1		
2	A	1	Total	Zn	0	0
			1	1		

- Molecule 3 is DI(HYDROXYETHYL)ETHER (three-letter code: PEG) (formula: C₄H₁₀O₃).



Mol	Chain	Residues	Atoms			ZeroOcc	AltConf
3	A	1	Total	C	O	0	0
			7	4	3		

- Molecule 4 is 7-ETHYL-3-(PIPERIDIN-4-YL)-1H-INDOLE (three-letter code: 92O) (formula: $C_{15}H_{20}N_2$).



Mol	Chain	Residues	Atoms			ZeroOcc	AltConf
4	A	1	Total	C	N	0	0
			17	15	2		
4	A	1	Total	C	N	0	0
			12	11	1		

Continued on next page...

Continued from previous page...

Mol	Chain	Residues	Atoms			ZeroOcc	AltConf
4	B	1	Total	C	N	0	0
			17	15	2		
4	B	1	Total	C	N	0	0
			17	15	2		

- Molecule 5 is water.

Mol	Chain	Residues	Atoms		ZeroOcc	AltConf
5	A	215	Total	O	0	0
			215	215		
5	B	210	Total	O	0	0
			210	210		

4 Data and refinement statistics

Property	Value	Source
Space group	P 21 21 21	Depositor
Cell constants a, b, c, α , β , γ	64.99Å 71.06Å 105.03Å 90.00° 90.00° 90.00°	Depositor
Resolution (Å)	29.43 – 1.36 29.43 – 1.36	Depositor EDS
% Data completeness (in resolution range)	99.0 (29.43-1.36) 99.0 (29.43-1.36)	Depositor EDS
R_{merge}	0.05	Depositor
R_{sym}	(Not available)	Depositor
$\langle I/\sigma(I) \rangle$ ¹	3.12 (at 1.36Å)	Xtriage
Refinement program	PHENIX (PHENIX.REFINE)	Depositor
R, R_{free}	0.143 , 0.166 0.149 , 0.151	Depositor DCC
R_{free} test set	5208 reflections (5.28%)	DCC
Wilson B-factor (Å ²)	13.8	Xtriage
Anisotropy	0.452	Xtriage
Bulk solvent k_{sol} (e/Å ³), B_{sol} (Å ²)	0.38 , 46.4	EDS
Estimated twinning fraction	No twinning to report.	Xtriage
L-test for twinning ²	$\langle L \rangle = 0.51$, $\langle L^2 \rangle = 0.35$	Xtriage
Outliers	2 of 103904 reflections (0.002%)	Xtriage
F_o, F_c correlation	0.98	EDS
Total number of atoms	3684	wwPDB-VP
Average B, all atoms (Å ²)	21.0	wwPDB-VP

Xtriage's analysis on translational NCS is as follows: *The analyses of the Patterson function reveals a significant off-origin peak that is 46.31 % of the origin peak, indicating pseudo translational symmetry. The chance of finding a peak of this or larger height randomly in a structure without pseudo translational symmetry is equal to 1.1656e-04. The detected translational NCS is most likely also responsible for the elevated intensity ratio.*

¹Intensities estimated from amplitudes.

²Theoretical values of $\langle |L| \rangle$, $\langle L^2 \rangle$ for acentric reflections are 0.5, 0.375 respectively for untwinned datasets, and 0.333, 0.2 for perfectly twinned datasets.

5 Model quality

5.1 Standard geometry

Bond lengths and bond angles in the following residue types are not validated in this section: ZN, PEG, 92O

The Z score for a bond length (or angle) is the number of standard deviations the observed value is removed from the expected value. A bond length (or angle) with $|Z| > 5$ is considered an outlier worth inspection. RMSZ is the root-mean-square of all Z scores of the bond lengths (or angles).

Mol	Chain	Bond lengths		Bond angles	
		RMSZ	$\# Z > 5$	RMSZ	$\# Z > 5$
1	A	0.33	0/1671	0.53	0/2266
1	B	0.32	0/1657	0.53	0/2247
All	All	0.33	0/3328	0.53	0/4513

There are no bond length outliers.

There are no bond angle outliers.

There are no chirality outliers.

There are no planarity outliers.

5.2 Too-close contacts

In the following table, the Non-H and H(model) columns list the number of non-hydrogen atoms and hydrogen atoms in the chain respectively. The H(added) column lists the number of hydrogen atoms added and optimized by MolProbity. The Clashes column lists the number of clashes within the asymmetric unit, whereas Symm-Clashes lists symmetry related clashes.

Mol	Chain	Non-H	H(model)	H(added)	Clashes	Symm-Clashes
1	A	1597	0	1591	6	0
1	B	1590	0	1575	9	0
2	A	1	0	0	0	0
2	B	1	0	0	0	0
3	A	7	0	10	1	0
4	A	29	0	30	1	0
4	B	34	0	40	1	0
5	A	215	0	0	2	0
5	B	210	0	0	1	0
All	All	3684	0	3246	15	0

The all-atom clashscore is defined as the number of clashes found per 1000 atoms (including

hydrogen atoms). The all-atom clashscore for this structure is 2.

All (15) close contacts within the same asymmetric unit are listed below, sorted by their clash magnitude.

Atom-1	Atom-2	Interatomic distance (Å)	Clash overlap (Å)
1:B:120:LYS:NZ	1:B:277[A]:CYS:SG	2.63	0.71
1:A:115:HIS:HB3	3:A:1291:PEG:H21	1.80	0.62
1:B:150:THR:HG23	4:B:1292:92O:H5	1.86	0.56
1:A:150:THR:HG23	4:A:1292:92O:H5	1.96	0.47
1:B:175:ARG:HD3	1:B:191:PRO:O	2.14	0.47
1:A:258:GLU:OE2	5:A:2198:HOH:O	2.20	0.46
1:B:258[B]:GLU:OE2	5:B:2077:HOH:O	2.21	0.45
1:A:175:ARG:HD3	1:A:191:PRO:O	2.17	0.44
1:B:101:LYS:O	1:B:267:ARG:HD2	2.18	0.43
1:B:256[B]:THR:HG23	1:B:264:LEU:HD12	2.02	0.42
1:A:170:THR:HG23	5:A:2106:HOH:O	2.19	0.42
1:B:124:CYS:SG	1:B:133:LEU:HD11	2.59	0.41
1:A:97:VAL:HG11	1:A:169[A]:MET:SD	2.61	0.41
1:B:122[B]:VAL:HG11	1:B:125:THR:HB	2.02	0.40
1:B:97:VAL:HA	1:B:98:PRO:HD3	1.91	0.40

There are no symmetry-related clashes.

5.3 Torsion angles ⓘ

5.3.1 Protein backbone ⓘ

In the following table, the Percentiles column shows the percent Ramachandran outliers of the chain as a percentile score with respect to all X-ray entries followed by that with respect to entries of similar resolution.

The Analysed column shows the number of residues for which the backbone conformation was analysed, and the total number of residues.

Mol	Chain	Analysed	Favoured	Allowed	Outliers	Percentiles	
1	A	206/219 (94%)	205 (100%)	1 (0%)	0	100	100
1	B	206/219 (94%)	206 (100%)	0	0	100	100
All	All	412/438 (94%)	411 (100%)	1 (0%)	0	100	100

There are no Ramachandran outliers to report.

5.3.2 Protein sidechains [i](#)

In the following table, the Percentiles column shows the percent sidechain outliers of the chain as a percentile score with respect to all X-ray entries followed by that with respect to entries of similar resolution.

The Analysed column shows the number of residues for which the sidechain conformation was analysed, and the total number of residues.

Mol	Chain	Analysed	Rotameric	Outliers	Percentiles	
1	A	187/195 (96%)	185 (99%)	2 (1%)	80	53
1	B	187/195 (96%)	186 (100%)	1 (0%)	92	77
All	All	374/390 (96%)	371 (99%)	3 (1%)	84	65

All (3) residues with a non-rotameric sidechain are listed below:

Mol	Chain	Res	Type
1	A	110	ARG
1	A	247	ASN
1	B	110	ARG

Some sidechains can be flipped to improve hydrogen bonding and reduce clashes. There are no such sidechains identified.

5.3.3 RNA [i](#)

There are no RNA molecules in this entry.

5.4 Non-standard residues in protein, DNA, RNA chains [i](#)

There are no non-standard protein/DNA/RNA residues in this entry.

5.5 Carbohydrates [i](#)

There are no carbohydrates in this entry.

5.6 Ligand geometry [i](#)

Of 7 ligands modelled in this entry, 2 are monoatomic - leaving 5 for Mogul analysis.

In the following table, the Counts columns list the number of bonds (or angles) for which Mogul statistics could be retrieved, the number of bonds (or angles) that are observed in the model and

the number of bonds (or angles) that are defined in the chemical component dictionary. The Link column lists molecule types, if any, to which the group is linked. The Z score for a bond length (or angle) is the number of standard deviations the observed value is removed from the expected value. A bond length (or angle) with $|Z| > 2$ is considered an outlier worth inspection. RMSZ is the root-mean-square of all Z scores of the bond lengths (or angles).

Mol	Type	Chain	Res	Link	Bond lengths			Bond angles		
					Counts	RMSZ	$\# Z > 2$	Counts	RMSZ	$\# Z > 2$
3	PEG	A	1291	-	6,6,6	0.51	0	5,5,5	0.30	0
4	92O	A	1292	-	17,19,19	0.91	0	17,26,26	0.86	1 (5%)
4	92O	A	1293	-	10,13,19	0.94	0	9,18,26	1.07	1 (11%)
4	92O	B	1292	-	17,19,19	0.88	0	17,26,26	0.85	0
4	92O	B	1293	-	17,19,19	0.88	0	17,26,26	0.98	1 (5%)

In the following table, the Chirals column lists the number of chiral outliers, the number of chiral centers analysed, the number of these observed in the model and the number defined in the chemical component dictionary. Similar counts are reported in the Torsion and Rings columns. '-' means no outliers of that kind were identified.

Mol	Type	Chain	Res	Link	Chirals	Torsions	Rings
3	PEG	A	1291	-	-	0/4/4/4	0/0/0/0
4	92O	A	1292	-	-	0/4/14/14	0/3/3/3
4	92O	A	1293	-	-	0/2/2/14	0/2/2/3
4	92O	B	1292	-	-	0/4/14/14	0/3/3/3
4	92O	B	1293	-	-	0/4/14/14	0/3/3/3

There are no bond length outliers.

All (3) bond angle outliers are listed below:

Mol	Chain	Res	Type	Atoms	Z	Observed(°)	Ideal(°)
4	A	1293	92O	C4-C3-C10	-2.49	115.27	118.93
4	B	1293	92O	C4-C3-C10	-2.24	115.62	118.93
4	A	1292	92O	C4-C3-C10	-2.05	115.91	118.93

There are no chirality outliers.

There are no torsion outliers.

There are no ring outliers.

3 monomers are involved in 3 short contacts:

Mol	Chain	Res	Type	Clashes	Symm-Clashes
3	A	1291	PEG	1	0
4	A	1292	92O	1	0

Continued on next page...

Continued from previous page...

Mol	Chain	Res	Type	Clashes	Symm-Clashes
4	B	1292	92O	1	0

5.7 Other polymers [i](#)

There are no such residues in this entry.

5.8 Polymer linkage issues [i](#)

There are no chain breaks in this entry.

6 Fit of model and data ⓘ

6.1 Protein, DNA and RNA chains ⓘ

In the following table, the column labelled ‘#RSRZ> 2’ contains the number (and percentage) of RSRZ outliers, followed by percent RSRZ outliers for the chain as percentile scores relative to all X-ray entries and entries of similar resolution. The OWAB column contains the minimum, median, 95th percentile and maximum values of the occupancy-weighted average B-factor per residue. The column labelled ‘Q< 0.9’ lists the number of (and percentage) of residues with an average occupancy less than 0.9.

Mol	Chain	Analysed	<RSRZ>	#RSRZ>2		OWAB(Å ²)	Q<0.9
1	A	195/219 (89%)	0.30	18 (9%)	11 11	10, 17, 37, 52	0
1	B	197/219 (89%)	0.29	17 (8%)	13 13	9, 17, 38, 61	0
All	All	392/438 (89%)	0.29	35 (8%)	12 12	9, 17, 37, 61	0

All (35) RSRZ outliers are listed below:

Mol	Chain	Res	Type	RSRZ
1	B	290	ARG	5.7
1	B	225	VAL	5.2
1	B	291	LYS	4.9
1	B	226	GLY	4.7
1	A	120	LYS	4.3
1	A	289	LEU	4.2
1	B	209	ARG	3.9
1	A	290	ARG	3.8
1	A	288	ASN	3.6
1	A	201	LEU	3.6
1	B	120	LYS	3.5
1	A	187	GLY	3.4
1	B	288	ASN	3.4
1	B	287	GLU	3.3
1	A	210	ASN	3.2
1	A	183	SER	3.1
1	B	95	SER	3.0
1	A	209	ARG	2.9
1	B	121	SER	2.9
1	A	185	SER	2.8
1	B	187	GLY	2.8
1	B	224	GLU	2.7
1	A	212	PHE	2.6
1	B	119	ALA	2.6

Continued on next page...

Continued from previous page...

Mol	Chain	Res	Type	RSRZ
1	B	280	ARG	2.5
1	B	289	LEU	2.5
1	A	225	VAL	2.5
1	A	224	GLU	2.4
1	A	195	ILE	2.4
1	B	212	PHE	2.3
1	A	287	GLU	2.3
1	A	96	SER	2.2
1	A	121	SER	2.1
1	A	280	ARG	2.1
1	B	96[A]	SER	2.1

6.2 Non-standard residues in protein, DNA, RNA chains [i](#)

There are no non-standard protein/DNA/RNA residues in this entry.

6.3 Carbohydrates [i](#)

There are no carbohydrates in this entry.

6.4 Ligands [i](#)

In the following table, the Atoms column lists the number of modelled atoms in the group and the number defined in the chemical component dictionary. LLDF column lists the quality of electron density of the group with respect to its neighbouring residues in protein, DNA or RNA chains. The B-factors column lists the minimum, median, 95th percentile and maximum values of B factors of atoms in the group. The column labelled 'Q< 0.9' lists the number of atoms with occupancy less than 0.9.

Mol	Type	Chain	Res	Atoms	RSCC	RSR	LLDF	B-factors(Å ²)	Q<0.9
4	92O	A	1293	12/17	0.69	0.21	4.38	38,41,42,43	0
4	92O	B	1293	17/17	0.79	0.20	4.12	29,33,44,44	0
3	PEG	A	1291	7/7	0.77	0.17	3.33	39,45,48,49	0
4	92O	A	1292	17/17	0.87	0.11	1.12	18,20,26,27	0
4	92O	B	1292	17/17	0.90	0.09	0.17	15,17,25,26	0
2	ZN	B	313	1/1	1.00	0.04	-1.66	14,14,14,14	0
2	ZN	A	313	1/1	1.00	0.04	-2.46	14,14,14,14	0

6.5 Other polymers ⓘ

There are no such residues in this entry.