



Full wwPDB X-ray Structure Validation Report ⓘ

Feb 19, 2016 – 09:29 PM GMT

PDB ID : 5AC2
Title : human aldehyde dehydrogenase 1A1 with duocarmycin analog
Authors : Koch, M.F.; Harteis, S.; Blank, I.D.; Pestel, G.; Tietze, L.F.; Ochsenfeld, C.;
Schneider, S.; Sieber, S.A.
Deposited on : 2015-08-11
Resolution : 1.85 Å(reported)

This is a Full wwPDB X-ray Structure Validation Report for a publicly released PDB entry.
We welcome your comments at validation@mail.wwpdb.org
A user guide is available at
<http://wwpdb.org/validation/2016/XrayValidationReportHelp>
with specific help available everywhere you see the ⓘ symbol.

The following versions of software and data (see [references ⓘ](#)) were used in the production of this report:

MolProbity : 4.02b-467
Mogul : 1.7.1 (RC1), CSD as537be (2016)
Xtriage (Phenix) : 1.9-1692
EDS : rb-20026982
Percentile statistics : 20151230.v01 (using entries in the PDB archive December 30th 2015)
Refmac : 5.8.0135
CCP4 : 6.5.0
Ideal geometry (proteins) : Engh & Huber (2001)
Ideal geometry (DNA, RNA) : Parkinson et al. (1996)
Validation Pipeline (wwPDB-VP) : rb-20026982

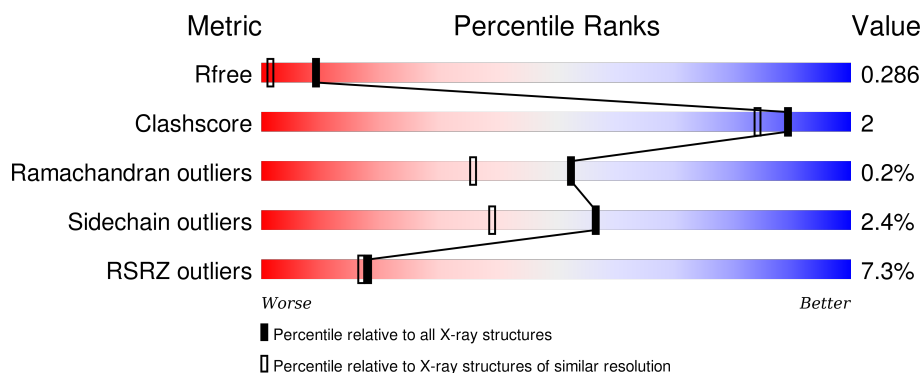
1 Overall quality at a glance

The following experimental techniques were used to determine the structure:

X-RAY DIFFRACTION

The reported resolution of this entry is 1.85 Å.

Percentile scores (ranging between 0-100) for global validation metrics of the entry are shown in the following graphic. The table shows the number of entries on which the scores are based.



Metric	Whole archive (#Entries)	Similar resolution (#Entries, resolution range(Å))
R_{free}	91344	1745 (1.86-1.86)
Clashscore	102246	1898 (1.86-1.86)
Ramachandran outliers	100387	1875 (1.86-1.86)
Sidechain outliers	100360	1875 (1.86-1.86)
RSRZ outliers	91569	1747 (1.86-1.86)

The table below summarises the geometric issues observed across the polymeric chains and their fit to the electron density. The red, orange, yellow and green segments on the lower bar indicate the fraction of residues that contain outliers for ≥ 3 , 2, 1 and 0 types of geometric quality criteria. A grey segment represents the fraction of residues that are not modelled. The numeric value for each fraction is indicated below the corresponding segment, with a dot representing fractions $\leq 5\%$. The upper red bar (where present) indicates the fraction of residues that have poor fit to the electron density. The numeric value is given above the bar.

Mol	Chain	Length	Quality of chain
1	A	501	<div> <div>7%</div> <div>91%</div> <div>7%</div> </div>

The following table lists non-polymeric compounds, carbohydrate monomers and non-standard residues in protein, DNA, RNA chains that are outliers for geometric or electron-density-fit criteria:

Mol	Type	Chain	Res	Chirality	Geometry	Clashes	Electron density
2	K9P	A	1502	-	-	-	X

Continued on next page...

Continued from previous page...

Mol	Type	Chain	Res	Chirality	Geometry	Clashes	Electron density
4	TXE	A	1504	X	-	-	-

2 Entry composition [i](#)

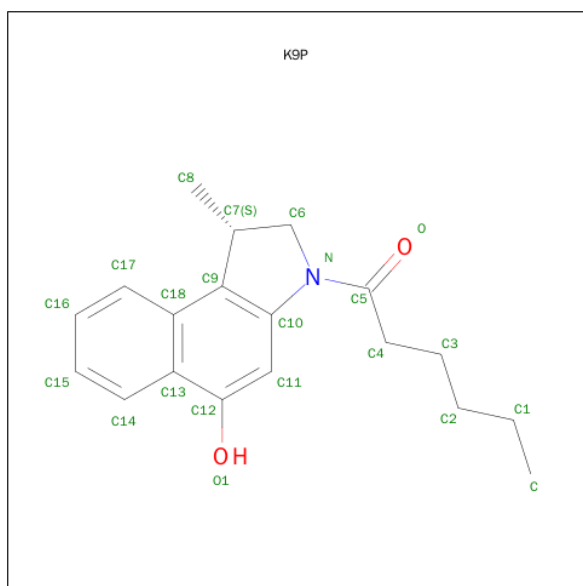
There are 5 unique types of molecules in this entry. The entry contains 4076 atoms, of which 0 are hydrogens and 0 are deuteriums.

In the tables below, the ZeroOcc column contains the number of atoms modelled with zero occupancy, the AltConf column contains the number of residues with at least one atom in alternate conformation and the Trace column contains the number of residues modelled with at most 2 atoms.

- Molecule 1 is a protein called RETINAL DEHYDROGENASE 1.

Mol	Chain	Residues	Atoms					ZeroOcc	AltConf	Trace
1	A	494	Total	C	N	O	S	0	4	0
			3840	2449	647	724	20			

- Molecule 2 is 1-[(1S)-1-METHYL-5-OXIDANYL-1,2-DIHYDROBENZO[E]INDOL-3-YL]H EXAN-1-ONE (three-letter code: K9P) (formula: C₁₉H₂₃NO₂).

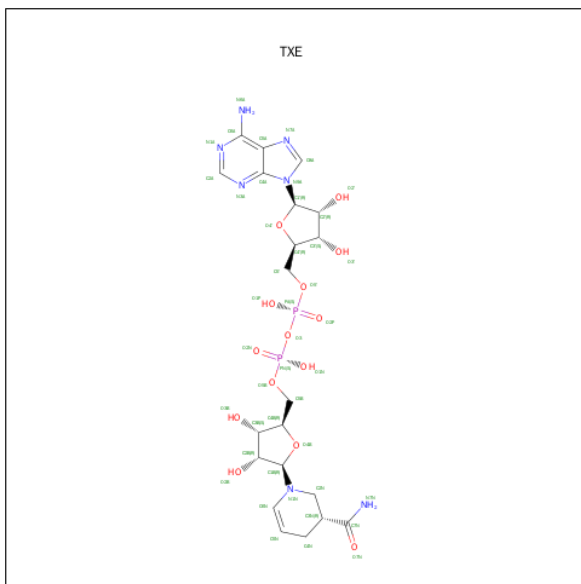


Mol	Chain	Residues	Atoms				ZeroOcc	AltConf
2	A	1	Total	C	N	O	0	0
			22	19	1	2		

- Molecule 3 is YTTERBIUM (III) ION (three-letter code: YB) (formula: Yb).

Mol	Chain	Residues	Atoms		ZeroOcc	AltConf
3	A	3	Total	Yb	0	0
			3	3		

- Molecule 4 is [[(2R,3S,4R,5R)-5-[(3R)-3-AMINOCARBONYL-3,4-DIHYDRO-2H-PYRIDIN-1-YL]-3,4-BIS(OXIDANYL)OXOLAN-2-YL]METHOXY-OXIDANIDYL-PHOSPHORYL] [(2R,3S,4R,5R)-5-(6-AMINOPURIN-9-YL)-3,4-BIS(OXIDANYL)OXOLAN-2-YL]METHYL PHOSPHATE (three-letter code: TXE) (formula: C₂₁H₃₁N₇O₁₄P₂).



Mol	Chain	Residues	Atoms					ZeroOcc	AltConf
4	A	1	Total	C	N	O	P	0	0
			44	21	7	14	2		

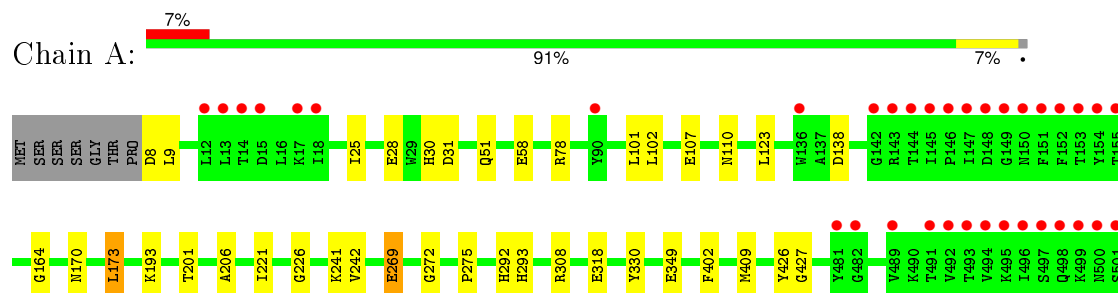
- Molecule 5 is water.

Mol	Chain	Residues	Atoms		ZeroOcc	AltConf
5	A	167	Total	O	0	0
			167	167		

3 Residue-property plots

These plots are drawn for all protein, RNA and DNA chains in the entry. The first graphic for a chain summarises the proportions of errors displayed in the second graphic. The second graphic shows the sequence view annotated by issues in geometry and electron density. Residues are color-coded according to the number of geometric quality criteria for which they contain at least one outlier: green = 0, yellow = 1, orange = 2 and red = 3 or more. A red dot above a residue indicates a poor fit to the electron density ($RSRZ > 2$). Stretches of 2 or more consecutive residues without any outlier are shown as a green connector. Residues present in the sample, but not in the model, are shown in grey.

● Molecule 1: RETINAL DEHYDROGENASE 1



4 Data and refinement statistics

Property	Value	Source
Space group	P 4 2 2	Depositor
Cell constants a, b, c, α , β , γ	109.12Å 109.12Å 83.17Å 90.00° 90.00° 90.00°	Depositor
Resolution (Å)	48.80 – 1.85 48.80 – 1.85	Depositor EDS
% Data completeness (in resolution range)	99.8 (48.80-1.85) 99.8 (48.80-1.85)	Depositor EDS
R_{merge}	0.19	Depositor
R_{sym}	(Not available)	Depositor
$\langle I/\sigma(I) \rangle$ ¹	1.19 (at 1.84Å)	Xtriage
Refinement program	REFMAC 5.8.0073	Depositor
R, R_{free}	0.199 , 0.251 0.247 , 0.286	Depositor DCC
R_{free} test set	2172 reflections (5.26%)	DCC
Wilson B-factor (Å ²)	27.9	Xtriage
Anisotropy	0.299	Xtriage
Bulk solvent k_{sol} (e/Å ³), B_{sol} (Å ²)	0.32 , 34.7	EDS
Estimated twinning fraction	No twinning to report.	Xtriage
L-test for twinning ²	$\langle L \rangle = 0.48$, $\langle L^2 \rangle = 0.32$	Xtriage
Outliers	1 of 43648 reflections (0.002%)	Xtriage
F_o, F_c correlation	0.94	EDS
Total number of atoms	4076	wwPDB-VP
Average B, all atoms (Å ²)	41.0	wwPDB-VP

Xtriage's analysis on translational NCS is as follows: *The largest off-origin peak in the Patterson function is 5.62% of the height of the origin peak. No significant pseudotranslation is detected.*

¹Intensities estimated from amplitudes.

²Theoretical values of $\langle |L| \rangle$, $\langle L^2 \rangle$ for acentric reflections are 0.5, 0.375 respectively for untwinned datasets, and 0.333, 0.2 for perfectly twinned datasets.

5 Model quality

5.1 Standard geometry

Bond lengths and bond angles in the following residue types are not validated in this section: TXE, K9P, YB

The Z score for a bond length (or angle) is the number of standard deviations the observed value is removed from the expected value. A bond length (or angle) with $|Z| > 5$ is considered an outlier worth inspection. RMSZ is the root-mean-square of all Z scores of the bond lengths (or angles).

Mol	Chain	Bond lengths		Bond angles	
		RMSZ	$\# Z > 5$	RMSZ	$\# Z > 5$
1	A	0.96	4/3928 (0.1%)	0.89	4/5316 (0.1%)

Chiral center outliers are detected by calculating the chiral volume of a chiral center and verifying if the center is modelled as a planar moiety or with the opposite hand. A planarity outlier is detected by checking planarity of atoms in a peptide group, atoms in a mainchain group or atoms of a sidechain that are expected to be planar.

Mol	Chain	#Chirality outliers	#Planarity outliers
1	A	0	1

All (4) bond length outliers are listed below:

Mol	Chain	Res	Type	Atoms	Z	Observed(Å)	Ideal(Å)
1	A	9	LEU	C-N	-14.68	1.06	1.34
1	A	101	LEU	C-N	-10.61	1.09	1.34
1	A	8	ASP	C-N	-9.71	1.11	1.34
1	A	269	GLU	CD-OE2	-5.14	1.20	1.25

All (4) bond angle outliers are listed below:

Mol	Chain	Res	Type	Atoms	Z	Observed(°)	Ideal(°)
1	A	78	ARG	NE-CZ-NH1	6.11	123.36	120.30
1	A	9	LEU	O-C-N	-5.61	110.44	121.10
1	A	138	ASP	CB-CG-OD2	-5.55	113.31	118.30
1	A	31	ASP	CB-CG-OD1	5.35	123.11	118.30

There are no chirality outliers.

All (1) planarity outliers are listed below:

Mol	Chain	Res	Type	Group
1	A	102	LEU	Mainchain

5.2 Too-close contacts ⓘ

In the following table, the Non-H and H(model) columns list the number of non-hydrogen atoms and hydrogen atoms in the chain respectively. The H(added) column lists the number of hydrogen atoms added and optimized by MolProbity. The Clashes column lists the number of clashes within the asymmetric unit, whereas Symm-Clashes lists symmetry related clashes.

Mol	Chain	Non-H	H(model)	H(added)	Clashes	Symm-Clashes
1	A	3840	0	3833	15	0
2	A	22	0	20	3	0
3	A	3	0	0	1	0
4	A	44	0	28	3	0
5	A	167	0	0	2	0
All	All	4076	0	3881	19	0

The all-atom clashscore is defined as the number of clashes found per 1000 atoms (including hydrogen atoms). The all-atom clashscore for this structure is 2.

All (19) close contacts within the same asymmetric unit are listed below, sorted by their clash magnitude.

Atom-1	Atom-2	Interatomic distance (Å)	Clash overlap (Å)
1:A:206:ALA:HB2	1:A:221:ILE:HD12	1.72	0.69
3:A:1507:YB:YB	5:A:2164:HOH:O	1.89	0.64
1:A:170:ASN:HD21	4:A:1504:TXE:HN7N	1.49	0.60
1:A:349:GLU:OE2	5:A:2123:HOH:O	2.18	0.56
1:A:292:HIS:NE2	1:A:330:TYR:OH	2.38	0.54
1:A:272:GLY:HA2	1:A:426:TYR:CD1	2.44	0.53
1:A:107:GLU:OE2	1:A:173:LEU:HB2	2.09	0.52
1:A:28:GLU:HG3	1:A:30:HIS:HE2	1.75	0.52
1:A:58:GLU:CD	1:A:58:GLU:H	2.14	0.50
1:A:25:ILE:O	1:A:28:GLU:HG2	2.12	0.50
1:A:28:GLU:HG3	1:A:30:HIS:NE2	2.30	0.46
1:A:164:GLY:O	1:A:242:VAL:HA	2.18	0.43
1:A:293:HIS:HB2	2:A:1502:K9P:HC3	2.01	0.43
1:A:173:LEU:HD13	1:A:201:THR:HB	2.00	0.43
1:A:275:PRO:HA	1:A:308:ARG:O	2.19	0.43
4:A:1504:TXE:H2'	4:A:1504:TXE:H5'	1.62	0.42
2:A:1502:K9P:H82C	2:A:1502:K9P:H17	2.02	0.41
1:A:226:GLY:HA3	4:A:1504:TXE:C8A	2.51	0.41

Continued on next page...

Continued from previous page...

Atom-1	Atom-2	Interatomic distance (Å)	Clash overlap (Å)
2:A:1502:K9P:O	2:A:1502:K9P:H11	2.20	0.41

There are no symmetry-related clashes.

5.3 Torsion angles [i](#)

5.3.1 Protein backbone [i](#)

In the following table, the Percentiles column shows the percent Ramachandran outliers of the chain as a percentile score with respect to all X-ray entries followed by that with respect to entries of similar resolution.

The Analysed column shows the number of residues for which the backbone conformation was analysed, and the total number of residues.

Mol	Chain	Analysed	Favoured	Allowed	Outliers	Percentiles
1	A	496/501 (99%)	481 (97%)	14 (3%)	1 (0%)	52 36

All (1) Ramachandran outliers are listed below:

Mol	Chain	Res	Type
1	A	427	GLY

5.3.2 Protein sidechains [i](#)

In the following table, the Percentiles column shows the percent sidechain outliers of the chain as a percentile score with respect to all X-ray entries followed by that with respect to entries of similar resolution.

The Analysed column shows the number of residues for which the sidechain conformation was analysed, and the total number of residues.

Mol	Chain	Analysed	Rotameric	Outliers	Percentiles
1	A	413/415 (100%)	403 (98%)	10 (2%)	57 39

All (10) residues with a non-rotameric sidechain are listed below:

Mol	Chain	Res	Type
1	A	51	GLN
1	A	110	ASN

Continued on next page...

Continued from previous page...

Mol	Chain	Res	Type
1	A	123	LEU
1	A	173	LEU
1	A	193	LYS
1	A	241	LYS
1	A	269	GLU
1	A	318	GLU
1	A	402	PHE
1	A	409	MET

Some sidechains can be flipped to improve hydrogen bonding and reduce clashes. All (3) such sidechains are listed below:

Mol	Chain	Res	Type
1	A	117	ASN
1	A	383	GLN
1	A	474	ASN

5.3.3 RNA [i](#)

There are no RNA molecules in this entry.

5.4 Non-standard residues in protein, DNA, RNA chains [i](#)

There are no non-standard protein/DNA/RNA residues in this entry.

5.5 Carbohydrates [i](#)

There are no carbohydrates in this entry.

5.6 Ligand geometry [i](#)

Of 5 ligands modelled in this entry, 3 are monoatomic - leaving 2 for Mogul analysis.

In the following table, the Counts columns list the number of bonds (or angles) for which Mogul statistics could be retrieved, the number of bonds (or angles) that are observed in the model and the number of bonds (or angles) that are defined in the chemical component dictionary. The Link column lists molecule types, if any, to which the group is linked. The Z score for a bond length (or angle) is the number of standard deviations the observed value is removed from the expected value. A bond length (or angle) with $|Z| > 2$ is considered an outlier worth inspection. RMSZ is the root-mean-square of all Z scores of the bond lengths (or angles).

Mol	Type	Chain	Res	Link	Bond lengths			Bond angles		
					Counts	RMSZ	# Z > 2	Counts	RMSZ	# Z > 2
2	K9P	A	1502	1	23,24,24	1.77	8 (34%)	23,34,34	1.28	2 (8%)
4	TXE	A	1504	3	41,48,48	2.27	10 (24%)	43,73,73	2.80	12 (27%)

In the following table, the Chirals column lists the number of chiral outliers, the number of chiral centers analysed, the number of these observed in the model and the number defined in the chemical component dictionary. Similar counts are reported in the Torsion and Rings columns. '-' means no outliers of that kind were identified.

Mol	Type	Chain	Res	Link	Chirals	Torsions	Rings
2	K9P	A	1502	1	-	0/9/21/21	0/3/3/3
4	TXE	A	1504	3	1/1/13/15	0/26/72/72	0/5/5/5

All (18) bond length outliers are listed below:

Mol	Chain	Res	Type	Atoms	Z	Observed(Å)	Ideal(Å)
4	A	1504	TXE	C2N-C3N	-8.68	1.38	1.53
4	A	1504	TXE	C2N-N1N	-5.56	1.37	1.46
4	A	1504	TXE	C4N-C3N	-4.72	1.39	1.52
4	A	1504	TXE	C4N-C5N	-4.27	1.40	1.49
2	A	1502	K9P	C9-C7	-3.31	1.46	1.51
2	A	1502	K9P	C9-C18	-3.31	1.37	1.43
2	A	1502	K9P	C18-C13	-3.24	1.37	1.43
2	A	1502	K9P	C5-N	-3.05	1.30	1.36
2	A	1502	K9P	C17-C18	-3.01	1.36	1.42
2	A	1502	K9P	C14-C13	-2.91	1.36	1.42
4	A	1504	TXE	C3N-C7N	-2.63	1.47	1.52
4	A	1504	TXE	O5'-C5'	-2.45	1.35	1.44
2	A	1502	K9P	C6-N	-2.04	1.43	1.47
2	A	1502	K9P	C12-C13	-2.00	1.39	1.43
4	A	1504	TXE	O7N-C7N	2.15	1.27	1.23
4	A	1504	TXE	C6N-C5N	2.45	1.37	1.33
4	A	1504	TXE	C5A-C4A	3.05	1.47	1.40
4	A	1504	TXE	O4'-C1'	3.46	1.46	1.41

All (14) bond angle outliers are listed below:

Mol	Chain	Res	Type	Atoms	Z	Observed(°)	Ideal(°)
4	A	1504	TXE	N3A-C2A-N1A	-7.00	123.38	128.87
4	A	1504	TXE	C5'-C4'-C3'	-4.61	97.35	115.20
4	A	1504	TXE	C1'-N9A-C4A	-4.22	122.10	126.81
4	A	1504	TXE	C4'-O4'-C1'	-3.97	105.43	109.64
4	A	1504	TXE	O1P-PA-O5'	-2.72	95.28	108.24

Continued on next page...

Continued from previous page...

Mol	Chain	Res	Type	Atoms	Z	Observed(°)	Ideal(°)
4	A	1504	TXE	C2'-C3'-C4'	-2.63	97.25	102.64
2	A	1502	K9P	C2-C3-C4	-2.07	105.63	113.30
4	A	1504	TXE	N6A-C6A-N1A	2.27	122.32	118.52
2	A	1502	K9P	O1-C12-C13	2.80	120.20	116.18
4	A	1504	TXE	O1N-PN-O2N	2.90	127.66	112.56
4	A	1504	TXE	C3N-C4N-C5N	3.80	119.12	112.04
4	A	1504	TXE	O4'-C1'-N9A	4.21	116.06	108.11
4	A	1504	TXE	C2N-C3N-C7N	4.54	118.74	110.42
4	A	1504	TXE	C2N-C3N-C4N	10.50	119.90	109.62

All (1) chirality outliers are listed below:

Mol	Chain	Res	Type	Atom
4	A	1504	TXE	C3N

There are no torsion outliers.

There are no ring outliers.

2 monomers are involved in 6 short contacts:

Mol	Chain	Res	Type	Clashes	Symm-Clashes
2	A	1502	K9P	3	0
4	A	1504	TXE	3	0

5.7 Other polymers [i](#)

There are no such residues in this entry.

5.8 Polymer linkage issues [i](#)

There are no chain breaks in this entry.

6 Fit of model and data ⓘ

6.1 Protein, DNA and RNA chains ⓘ

In the following table, the column labelled ‘#RSRZ> 2’ contains the number (and percentage) of RSRZ outliers, followed by percent RSRZ outliers for the chain as percentile scores relative to all X-ray entries and entries of similar resolution. The OWAB column contains the minimum, median, 95th percentile and maximum values of the occupancy-weighted average B-factor per residue. The column labelled ‘Q< 0.9’ lists the number of (and percentage) of residues with an average occupancy less than 0.9.

Mol	Chain	Analysed	<RSRZ>	#RSRZ>2	OWAB(Å ²)	Q<0.9
1	A	494/501 (98%)	0.46	36 (7%) 18 17	29, 40, 60, 85	0

All (36) RSRZ outliers are listed below:

Mol	Chain	Res	Type	RSRZ
1	A	13	LEU	6.6
1	A	145	ILE	5.9
1	A	494	VAL	5.0
1	A	492	VAL	5.0
1	A	496	ILE	4.7
1	A	501	SER	4.6
1	A	14	THR	4.5
1	A	144	THR	4.5
1	A	147	ILE	4.3
1	A	153	THR	4.3
1	A	151	PHE	4.3
1	A	154	TYR	4.2
1	A	150	ASN	4.1
1	A	500	ASN	3.9
1	A	489	VAL	3.6
1	A	152	PHE	3.4
1	A	493	THR	3.4
1	A	149	GLY	3.3
1	A	146	PRO	3.3
1	A	491	THR	3.1
1	A	17	LYS	3.0
1	A	497	SER	3.0
1	A	495	LYS	2.9
1	A	499	LYS	2.9
1	A	143	ARG	2.8
1	A	155	THR	2.7
1	A	142	GLY	2.7

Continued on next page...

Continued from previous page...

Mol	Chain	Res	Type	RSRZ
1	A	15	ASP	2.7
1	A	482	GLY	2.6
1	A	12	LEU	2.6
1	A	90	TYR	2.5
1	A	498	GLN	2.5
1	A	136	TRP	2.5
1	A	18	ILE	2.4
1	A	148	ASP	2.4
1	A	481	TYR	2.1

6.2 Non-standard residues in protein, DNA, RNA chains [i](#)

There are no non-standard protein/DNA/RNA residues in this entry.

6.3 Carbohydrates [i](#)

There are no carbohydrates in this entry.

6.4 Ligands [i](#)

In the following table, the Atoms column lists the number of modelled atoms in the group and the number defined in the chemical component dictionary. LLDF column lists the quality of electron density of the group with respect to its neighbouring residues in protein, DNA or RNA chains. The B-factors column lists the minimum, median, 95th percentile and maximum values of B factors of atoms in the group. The column labelled 'Q< 0.9' lists the number of atoms with occupancy less than 0.9.

Mol	Type	Chain	Res	Atoms	RSCC	RSR	LLDF	B-factors(Å ²)	Q<0.9
2	K9P	A	1502	22/22	0.86	0.17	4.02	35,42,48,52	0
4	TXE	A	1504	44/44	0.96	0.09	-0.94	24,31,34,41	0
3	YB	A	1507	1/1	0.94	0.07	-	35,35,35,35	0
3	YB	A	1508	1/1	0.99	0.04	-	34,34,34,34	0
3	YB	A	1503	1/1	0.84	0.20	-	118,118,118,118	0

6.5 Other polymers [i](#)

There are no such residues in this entry.