



# Full wwPDB X-ray Structure Validation Report ⓘ

Feb 1, 2016 – 12:27 AM GMT

PDB ID : 2AGY  
Title : Crystal structure of the Schiff base intermediate in the reductive half-reaction of aromatic amine dehydrogenase (AADH) with tryptamine. Monoclinic form  
Authors : Masgrau, L.; Roujeinikova, A.; Johannissen, L.O.; Hothi, P.; Basran, J.; Ranaghan, K.E.; Mulholland, A.J.; Sutcliffe, M.J.; Scrutton, N.S.; Leys, D.  
Deposited on : 2005-07-27  
Resolution : 1.10 Å(reported)

This is a Full wwPDB X-ray Structure Validation Report for a publicly released PDB entry.  
We welcome your comments at [validation@mail.wwpdb.org](mailto:validation@mail.wwpdb.org)  
A user guide is available at  
<http://wwpdb.org/validation/2016/XrayValidationReportHelp>  
with specific help available everywhere you see the ⓘ symbol.

---

The following versions of software and data (see [references ⓘ](#)) were used in the production of this report:

MolProbity : 4.02b-467  
Mogul : 1.7 (RC4), CSD as536be (2015)  
Xtriage (Phenix) : 1.9-1692  
EDS : rb-20026688  
Percentile statistics : 20151230.v01 (using entries in the PDB archive December 30th 2015)  
Refmac : 5.8.0135  
CCP4 : 6.5.0  
Ideal geometry (proteins) : Engh & Huber (2001)  
Ideal geometry (DNA, RNA) : Parkinson et al. (1996)  
Validation Pipeline (wwPDB-VP) : trunk26865

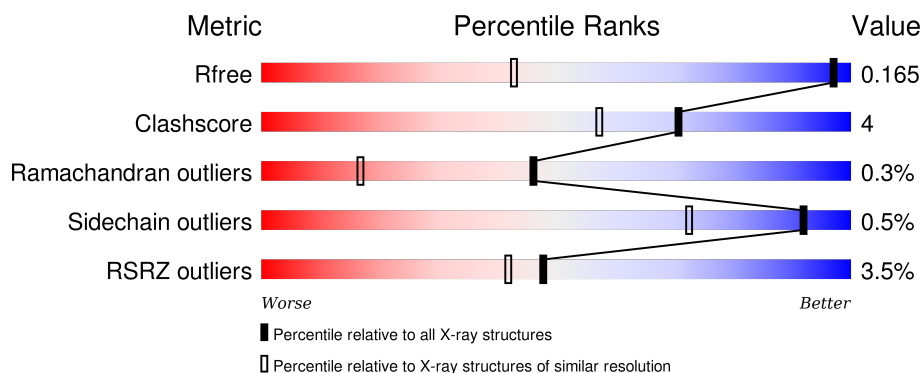
# 1 Overall quality at a glance

The following experimental techniques were used to determine the structure:

## *X-RAY DIFFRACTION*

The reported resolution of this entry is 1.10 Å.

Percentile scores (ranging between 0-100) for global validation metrics of the entry are shown in the following graphic. The table shows the number of entries on which the scores are based.



Metric	Whole archive (#Entries)	Similar resolution (#Entries, resolution range(Å))
$R_{free}$	91344	1006 (1.14-1.06)
Clashscore	102246	1055 (1.14-1.06)
Ramachandran outliers	100387	1016 (1.14-1.06)
Sidechain outliers	100360	1014 (1.14-1.06)
RSRZ outliers	91569	1009 (1.14-1.06)

The table below summarises the geometric issues observed across the polymeric chains and their fit to the electron density. The red, orange, yellow and green segments on the lower bar indicate the fraction of residues that contain outliers for  $\geq 3$ , 2, 1 and 0 types of geometric quality criteria. A grey segment represents the fraction of residues that are not modelled. The numeric value for each fraction is indicated below the corresponding segment, with a dot representing fractions  $\leq 5\%$ . The upper red bar (where present) indicates the fraction of residues that have poor fit to the electron density. The numeric value is given above the bar.

Mol	Chain	Length	Quality of chain
1	D	135	<div> <div>3%</div> <div>71% 10% 19%</div> </div>
1	H	135	<div> <div>6%</div> <div>66% 11% 22%</div> </div>
2	A	361	<div> <div>2%</div> <div>90% 9%</div> </div>
2	B	361	<div> <div>4%</div> <div>91% 9%</div> </div>

The following table lists non-polymeric compounds, carbohydrate monomers and non-standard

residues in protein, DNA, RNA chains that are outliers for geometric or electron-density-fit criteria:

Mol	Type	Chain	Res	Chirality	Geometry	Clashes	Electron density
3	TSH	D	2	-	-	-	X

## 2 Entry composition [i](#)

There are 4 unique types of molecules in this entry. The entry contains 8789 atoms, of which 0 are hydrogens and 0 are deuteriums.

In the tables below, the ZeroOcc column contains the number of atoms modelled with zero occupancy, the AltConf column contains the number of residues with at least one atom in alternate conformation and the Trace column contains the number of residues modelled with at most 2 atoms.

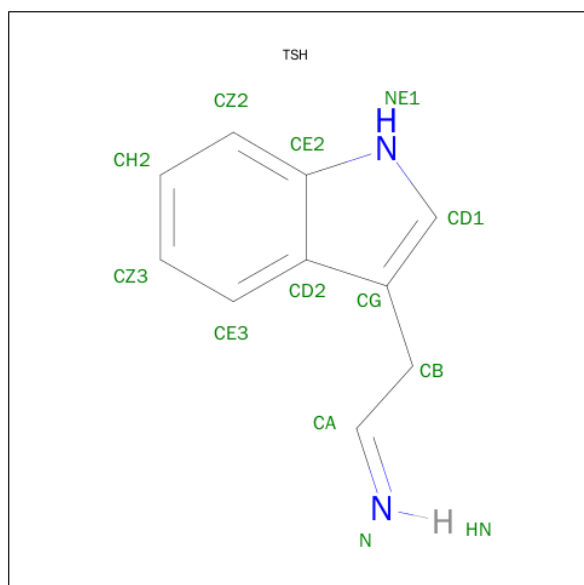
- Molecule 1 is a protein called Aromatic amine dehydrogenase.

Mol	Chain	Residues	Atoms					ZeroOcc	AltConf	Trace
1	D	109	Total	C	N	O	S	0	0	0
			835	510	147	163	15			
1	H	105	Total	C	N	O	S	0	0	0
			804	492	140	157	15			

- Molecule 2 is a protein called Aromatic amine dehydrogenase.

Mol	Chain	Residues	Atoms					ZeroOcc	AltConf	Trace
2	A	360	Total	C	N	O	S	0	1	0
			2805	1770	487	534	14			
2	B	361	Total	C	N	O	S	0	1	0
			2809	1771	490	534	14			

- Molecule 3 is 2-(1H-INDOL-3-YL)ETHANIMINE (three-letter code: TSH) (formula: C<sub>10</sub>H<sub>10</sub>N<sub>2</sub>).



Mol	Chain	Residues	Atoms			ZeroOcc	AltConf
3	H	1	Total	C	N	0	0
			12	10	2		
3	D	1	Total	C	N	0	0
			12	10	2		

- Molecule 4 is water.

Mol	Chain	Residues	Atoms		ZeroOcc	AltConf
4	A	621	Total	O	0	0
			621	621		
4	B	568	Total	O	0	0
			568	568		
4	D	178	Total	O	0	0
			178	178		
4	H	145	Total	O	0	0
			145	145		

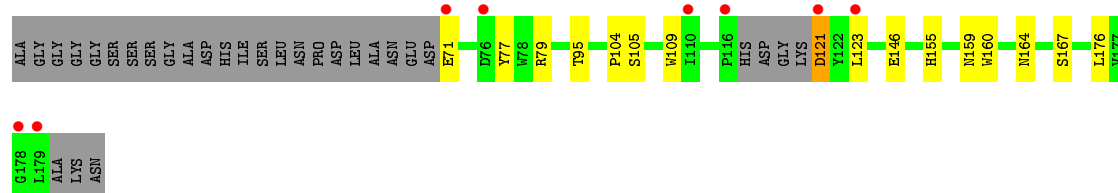
### 3 Residue-property plots [i](#)

These plots are drawn for all protein, RNA and DNA chains in the entry. The first graphic for a chain summarises the proportions of errors displayed in the second graphic. The second graphic shows the sequence view annotated by issues in geometry and electron density. Residues are color-coded according to the number of geometric quality criteria for which they contain at least one outlier: green = 0, yellow = 1, orange = 2 and red = 3 or more. A red dot above a residue indicates a poor fit to the electron density ( $RSRZ > 2$ ). Stretches of 2 or more consecutive residues without any outlier are shown as a green connector. Residues present in the sample, but not in the model, are shown in grey.

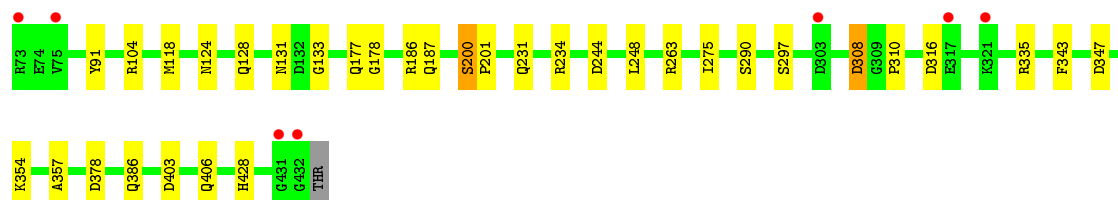
- Molecule 1: Aromatic amine dehydrogenase



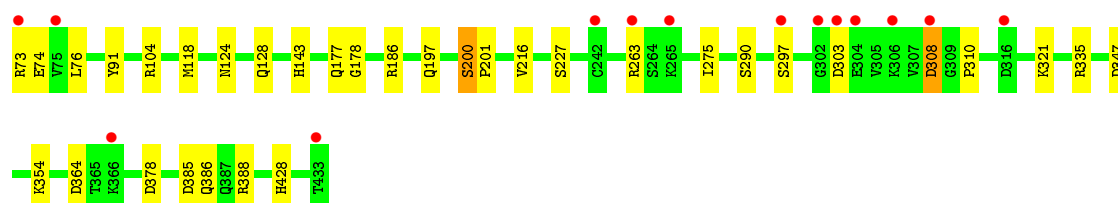
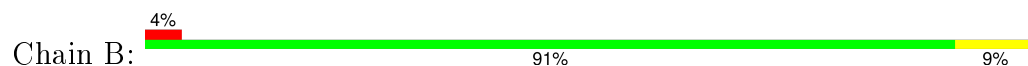
- Molecule 1: Aromatic amine dehydrogenase



- Molecule 2: Aromatic amine dehydrogenase



- Molecule 2: Aromatic amine dehydrogenase



## 4 Data and refinement statistics

Property	Value	Source
Space group	P 1 21 1	Depositor
Cell constants a, b, c, $\alpha$ , $\beta$ , $\gamma$	70.70Å 88.37Å 79.71Å 90.00° 90.19° 90.00°	Depositor
Resolution (Å)	15.00 – 1.10 17.21 – 1.10	Depositor EDS
% Data completeness (in resolution range)	100.0 (15.00-1.10) 95.6 (17.21-1.10)	Depositor EDS
$R_{merge}$	0.06	Depositor
$R_{sym}$	(Not available)	Depositor
$\langle I/\sigma(I) \rangle$ <sup>1</sup>	2.91 (at 1.10Å)	Xtriage
Refinement program	REFMAC 5.1.9999	Depositor
R, $R_{free}$	0.144 , 0.163 0.146 , 0.165	Depositor DCC
$R_{free}$ test set	18936 reflections (5.30%)	DCC
Wilson B-factor (Å <sup>2</sup> )	19.1	Xtriage
Anisotropy	0.127	Xtriage
Bulk solvent $k_{sol}$ (e/Å <sup>3</sup> ), $B_{sol}$ (Å <sup>2</sup> )	0.36 , 48.5	EDS
Estimated twinning fraction	0.011 for h,-k,-l	Xtriage
L-test for twinning <sup>2</sup>	$\langle  L  \rangle = 0.52$ , $\langle L^2 \rangle = 0.35$	Xtriage
Outliers	0 of 376123 reflections	Xtriage
$F_o, F_c$ correlation	0.98	EDS
Total number of atoms	8789	wwPDB-VP
Average B, all atoms (Å <sup>2</sup> )	24.0	wwPDB-VP

Xtriage's analysis on translational NCS is as follows: *The largest off-origin peak in the Patterson function is 4.58% of the height of the origin peak. No significant pseudotranslation is detected.*

<sup>1</sup>Intensities estimated from amplitudes.

<sup>2</sup>Theoretical values of  $\langle |L| \rangle$ ,  $\langle L^2 \rangle$  for acentric reflections are 0.5, 0.375 respectively for untwinned datasets, and 0.333, 0.2 for perfectly twinned datasets.

## 5 Model quality

### 5.1 Standard geometry

Bond lengths and bond angles in the following residue types are not validated in this section: TRQ, TSH

The Z score for a bond length (or angle) is the number of standard deviations the observed value is removed from the expected value. A bond length (or angle) with  $|Z| > 5$  is considered an outlier worth inspection. RMSZ is the root-mean-square of all Z scores of the bond lengths (or angles).

Mol	Chain	Bond lengths		Bond angles	
		RMSZ	# $ Z  > 5$	RMSZ	# $ Z  > 5$
1	D	0.65	0/842	0.71	0/1146
1	H	0.70	0/809	0.72	1/1101 (0.1%)
2	A	0.66	0/2873	0.73	6/3893 (0.2%)
2	B	0.61	0/2877	0.71	6/3900 (0.2%)
All	All	0.65	0/7401	0.72	13/10040 (0.1%)

Chiral center outliers are detected by calculating the chiral volume of a chiral center and verifying if the center is modelled as a planar moiety or with the opposite hand. A planarity outlier is detected by checking planarity of atoms in a peptide group, atoms in a mainchain group or atoms of a sidechain that are expected to be planar.

Mol	Chain	#Chirality outliers	#Planarity outliers
2	A	0	1
2	B	0	1
All	All	0	2

There are no bond length outliers.

All (13) bond angle outliers are listed below:

Mol	Chain	Res	Type	Atoms	Z	Observed(°)	Ideal(°)
2	A	316	ASP	CB-CG-OD2	5.69	123.42	118.30
2	A	403	ASP	CB-CG-OD1	5.46	123.21	118.30
2	B	364	ASP	CB-CG-OD2	5.38	123.14	118.30
2	B	347	ASP	CB-CG-OD2	5.37	123.14	118.30
2	A	347	ASP	CB-CG-OD2	5.29	123.06	118.30
2	A	308	ASP	CB-CG-OD2	5.28	123.05	118.30
2	B	378	ASP	CB-CG-OD2	5.19	122.97	118.30
2	B	303	ASP	CB-CG-OD2	5.12	122.91	118.30
1	H	121	ASP	CB-CG-OD2	5.11	122.90	118.30
2	B	308	ASP	CB-CG-OD2	5.03	122.83	118.30

*Continued on next page...*



*Continued from previous page...*

Mol	Chain	Res	Type	Atoms	Z	Observed(°)	Ideal(°)
2	A	378	ASP	CB-CG-OD2	5.03	122.82	118.30
2	B	385	ASP	CB-CG-OD2	5.02	122.82	118.30
2	A	244	ASP	CB-CG-OD2	5.00	122.80	118.30

There are no chirality outliers.

All (2) planarity outliers are listed below:

Mol	Chain	Res	Type	Group
2	A	310	PRO	Peptide
2	B	310	PRO	Peptide

## 5.2 Too-close contacts

In the following table, the Non-H and H(model) columns list the number of non-hydrogen atoms and hydrogen atoms in the chain respectively. The H(added) column lists the number of hydrogen atoms added and optimized by MolProbity. The Clashes column lists the number of clashes within the asymmetric unit, whereas Symm-Clashes lists symmetry related clashes.

Mol	Chain	Non-H	H(model)	H(added)	Clashes	Symm-Clashes
1	D	835	0	732	13	0
1	H	804	0	704	13	0
2	A	2805	0	2743	21	0
2	B	2809	0	2744	23	0
3	D	12	0	9	1	0
3	H	12	0	9	0	0
4	A	621	0	0	4	2
4	B	568	0	0	4	2
4	D	178	0	0	7	0
4	H	145	0	0	3	0
All	All	8789	0	6941	62	2

The all-atom clashscore is defined as the number of clashes found per 1000 atoms (including hydrogen atoms). The all-atom clashscore for this structure is 4.

All (62) close contacts within the same asymmetric unit are listed below, sorted by their clash magnitude.

Atom-1	Atom-2	Interatomic distance (Å)	Clash overlap (Å)
1:D:179:LEU:C	4:D:275:HOH:O	1.97	1.01
2:A:124:ASN:HD21	2:A:178:GLY:H	1.32	0.77

*Continued on next page...*

*Continued from previous page...*

Atom-1	Atom-2	Interatomic distance (Å)	Clash overlap (Å)
4:D:243:HOH:O	2:A:118[A]:MET:SD	2.43	0.77
1:D:165:GLU:CD	4:D:269:HOH:O	2.23	0.76
1:H:105:SER:HA	1:H:164:ASN:HD21	1.51	0.75
1:D:95:THR:HG22	4:D:231:HOH:O	1.85	0.75
1:H:121:ASP:N	4:H:246:HOH:O	2.21	0.74
4:H:209:HOH:O	2:B:118[B]:MET:SD	2.46	0.74
1:D:71:GLU:N	4:D:232:HOH:O	2.21	0.73
2:B:124:ASN:HD21	2:B:178:GLY:H	1.36	0.71
2:B:91:TYR:OH	2:B:428:HIS:HD2	1.72	0.71
2:A:297:SER:OG	4:A:835:HOH:O	2.08	0.70
2:A:91:TYR:OH	2:A:428:HIS:HD2	1.77	0.68
2:B:197:GLN:NE2	2:B:227:SER:H	1.92	0.67
1:D:105:SER:HA	1:D:164:ASN:HD21	1.60	0.67
2:A:335:ARG:H	2:A:386:GLN:HE22	1.45	0.63
2:A:335:ARG:H	2:A:386:GLN:NE2	1.99	0.60
1:H:167:SER:HB2	2:A:177:GLN:HE22	1.67	0.59
2:B:197:GLN:HE21	2:B:227:SER:H	1.51	0.59
2:A:91:TYR:OH	2:A:428:HIS:CD2	2.57	0.57
2:A:406:GLN:HG2	4:A:753:HOH:O	2.04	0.57
2:B:321:LYS:HA	4:B:802:HOH:O	2.04	0.57
1:H:77:TYR:CE1	1:H:79:ARG:HG2	2.39	0.57
1:H:71:GLU:N	4:H:293:HOH:O	2.39	0.56
1:D:145:ARG:NH1	4:D:328:HOH:O	2.39	0.56
1:D:167:SER:HB2	2:B:177:GLN:HE22	1.69	0.55
2:A:248:LEU:HD13	2:A:263:ARG:HD3	1.88	0.54
2:B:263:ARG:CZ	4:B:730:HOH:O	2.56	0.54
2:B:335:ARG:H	2:B:386:GLN:HE22	1.56	0.53
1:D:109:TRQ:HB2	1:D:160:TRP:NE1	2.23	0.52
1:H:159:ASN:HD22	2:A:177:GLN:NE2	2.06	0.52
2:B:297:SER:HB2	2:B:308:ASP:OD1	2.11	0.51
2:B:335:ARG:H	2:B:386:GLN:NE2	2.09	0.50
1:H:109:TRQ:HB2	1:H:160:TRP:NE1	2.27	0.50
2:B:275:ILE:HA	2:B:290:SER:HA	1.95	0.49
1:H:155:HIS:HE1	4:A:484:HOH:O	1.95	0.48
1:D:159:ASN:HD22	2:B:177:GLN:NE2	2.11	0.48
2:A:275:ILE:HA	2:A:290:SER:HA	1.96	0.47
1:H:146:GLU:CD	2:A:354:LYS:HZ1	2.18	0.47
2:A:128:GLN:HE22	2:A:186:ARG:C	2.18	0.46
1:H:176:LEU:HD22	2:B:73:ARG:HD2	1.96	0.46
2:A:133:GLY:O	2:A:428:HIS:HE1	1.98	0.46
2:B:143:HIS:HD2	4:B:564:HOH:O	1.98	0.46

*Continued on next page...*

Continued from previous page...

Atom-1	Atom-2	Interatomic distance (Å)	Clash overlap (Å)
1:D:146:GLU:CD	2:B:354:LYS:HZ1	2.19	0.45
1:H:104:PRO:HB3	2:B:76:LEU:HD23	1.98	0.45
4:D:207:HOH:O	2:B:143:HIS:HE1	1.99	0.45
2:B:128:GLN:HE22	2:B:186:ARG:C	2.19	0.45
2:A:131:ASN:H	2:A:187:GLN:HE22	1.64	0.44
1:D:155:HIS:HE1	4:B:457:HOH:O	2.01	0.44
2:B:200:SER:N	2:B:201:PRO:HA	2.33	0.43
1:H:79:ARG:HD2	1:H:95:THR:HG21	2.00	0.43
2:B:73:ARG:HD3	2:B:74:GLU:HG3	2.01	0.43
2:B:200:SER:N	2:B:201:PRO:CA	2.83	0.42
1:D:109:TRQ:HB2	1:D:160:TRP:HE1	1.85	0.42
2:A:231:GLN:NE2	2:A:234:ARG:HH11	2.17	0.42
2:A:343:PHE:HB3	2:A:357:ALA:HB2	2.02	0.42
2:A:308:ASP:OD2	2:A:308:ASP:C	2.58	0.41
2:A:406:GLN:NE2	4:A:518:HOH:O	2.53	0.41
2:B:91:TYR:OH	2:B:428:HIS:CD2	2.62	0.41
2:A:200:SER:N	2:A:201:PRO:HA	2.36	0.41
1:D:159:ASN:HB2	3:D:2:TSH:CZ3	2.51	0.40
1:H:109:TRQ:HB2	1:H:160:TRP:HE1	1.86	0.40

All (2) symmetry-related close contacts are listed below. The label for Atom-2 includes the symmetry operator and encoded unit-cell translations to be applied.

Atom-1	Atom-2	Interatomic distance (Å)	Clash overlap (Å)
4:A:1041:HOH:O	4:B:902:HOH:O[2_546]	1.98	0.22
4:A:773:HOH:O	4:B:904:HOH:O[1_655]	2.13	0.07

## 5.3 Torsion angles [i](#)

### 5.3.1 Protein backbone [i](#)

In the following table, the Percentiles column shows the percent Ramachandran outliers of the chain as a percentile score with respect to all X-ray entries followed by that with respect to entries of similar resolution.

The Analysed column shows the number of residues for which the backbone conformation was analysed, and the total number of residues.

Mol	Chain	Analysed	Favoured	Allowed	Outliers	Percentiles
1	D	106/135 (78%)	104 (98%)	2 (2%)	0	<b>100</b> <b>100</b>

Continued on next page...

*Continued from previous page...*

Mol	Chain	Analysed	Favoured	Allowed	Outliers	Percentiles	
1	H	100/135 (74%)	97 (97%)	3 (3%)	0	100	100
2	A	359/361 (99%)	347 (97%)	11 (3%)	1 (0%)	46	17
2	B	360/361 (100%)	346 (96%)	12 (3%)	2 (1%)	30	6
All	All	925/992 (93%)	894 (97%)	28 (3%)	3 (0%)	46	17

All (3) Ramachandran outliers are listed below:

Mol	Chain	Res	Type
2	B	216	VAL
2	A	200	SER
2	B	200	SER

### 5.3.2 Protein sidechains ⓘ

In the following table, the Percentiles column shows the percent sidechain outliers of the chain as a percentile score with respect to all X-ray entries followed by that with respect to entries of similar resolution.

The Analysed column shows the number of residues for which the sidechain conformation was analysed, and the total number of residues.

Mol	Chain	Analysed	Rotameric	Outliers	Percentiles	
1	D	95/112 (85%)	95 (100%)	0	100	100
1	H	92/112 (82%)	91 (99%)	1 (1%)	80	46
2	A	304/305 (100%)	303 (100%)	1 (0%)	94	78
2	B	304/305 (100%)	302 (99%)	2 (1%)	88	63
All	All	795/834 (95%)	791 (100%)	4 (0%)	92	72

All (4) residues with a non-rotameric sidechain are listed below:

Mol	Chain	Res	Type
1	H	123	LEU
2	A	104	ARG
2	B	104	ARG
2	B	388	ARG

Some sidechains can be flipped to improve hydrogen bonding and reduce clashes. All (36) such sidechains are listed below:

Mol	Chain	Res	Type
1	D	139	GLN
1	D	143	GLN
1	D	155	HIS
1	D	164	ASN
1	H	139	GLN
1	H	143	GLN
1	H	155	HIS
1	H	164	ASN
2	A	124	ASN
2	A	128	GLN
2	A	177	GLN
2	A	180	ASN
2	A	187	GLN
2	A	231	GLN
2	A	261	GLN
2	A	266	GLN
2	A	386	GLN
2	A	406	GLN
2	A	424	GLN
2	A	426	GLN
2	A	428	HIS
2	B	86	GLN
2	B	124	ASN
2	B	128	GLN
2	B	143	HIS
2	B	177	GLN
2	B	180	ASN
2	B	187	GLN
2	B	197	GLN
2	B	231	GLN
2	B	266	GLN
2	B	386	GLN
2	B	406	GLN
2	B	424	GLN
2	B	426	GLN
2	B	428	HIS

### 5.3.3 RNA ⓘ

There are no RNA molecules in this entry.

## 5.4 Non-standard residues in protein, DNA, RNA chains ⓘ

2 non-standard protein/DNA/RNA residues are modelled in this entry.

In the following table, the Counts columns list the number of bonds (or angles) for which Mogul statistics could be retrieved, the number of bonds (or angles) that are observed in the model and the number of bonds (or angles) that are defined in the chemical component dictionary. The Link column lists molecule types, if any, to which the group is linked. The Z score for a bond length (or angle) is the number of standard deviations the observed value is removed from the expected value. A bond length (or angle) with  $|Z| > 2$  is considered an outlier worth inspection. RMSZ is the root-mean-square of all Z scores of the bond lengths (or angles).

Mol	Type	Chain	Res	Link	Bond lengths			Bond angles		
					Counts	RMSZ	# Z  > 2	Counts	RMSZ	# Z  > 2
1	TRQ	D	109	1,3	13,16,18	3.99	6 (46%)	8,22,26	1.80	3 (37%)
1	TRQ	H	109	1,3	13,16,18	4.09	5 (38%)	8,22,26	1.99	5 (62%)

In the following table, the Chirals column lists the number of chiral outliers, the number of chiral centers analysed, the number of these observed in the model and the number defined in the chemical component dictionary. Similar counts are reported in the Torsion and Rings columns. '-' means no outliers of that kind were identified.

Mol	Type	Chain	Res	Link	Chirals	Torsions	Rings
1	TRQ	D	109	1,3	-	0/3/16/21	0/2/2/2
1	TRQ	H	109	1,3	-	0/3/16/21	0/2/2/2

All (11) bond length outliers are listed below:

Mol	Chain	Res	Type	Atoms	Z	Observed(Å)	Ideal(Å)
1	D	109	TRQ	CH2-CZ3	-5.15	1.38	1.49
1	H	109	TRQ	CH2-CZ3	-4.77	1.38	1.49
1	H	109	TRQ	CD1-CG	-2.71	1.34	1.38
1	D	109	TRQ	CD1-CG	-2.21	1.34	1.38
1	D	109	TRQ	CB-CG	3.17	1.56	1.51
1	D	109	TRQ	CE3-CZ3	3.65	1.40	1.33
1	H	109	TRQ	CE3-CZ3	3.87	1.41	1.33
1	D	109	TRQ	CD2-CG	4.97	1.46	1.40
1	H	109	TRQ	CD2-CG	5.55	1.47	1.40
1	D	109	TRQ	O7-CZ2	10.85	1.41	1.22
1	H	109	TRQ	O7-CZ2	11.56	1.42	1.22

All (8) bond angle outliers are listed below:

Mol	Chain	Res	Type	Atoms	Z	Observed(°)	Ideal(°)
1	H	109	TRQ	O7-CZ2-CE2	-2.85	117.52	122.29
1	D	109	TRQ	O7-CZ2-CE2	-2.43	118.22	122.29
1	H	109	TRQ	CB-CG-CD1	-2.24	125.19	127.97
1	D	109	TRQ	CB-CG-CD1	-2.21	125.24	127.97
1	H	109	TRQ	CD1-NE1-CE2	2.07	109.69	104.34
1	D	109	TRQ	CB-CG-CD2	2.11	129.37	124.40
1	H	109	TRQ	CB-CG-CD2	2.13	129.42	124.40
1	H	109	TRQ	O7-CZ2-CH2	2.31	124.22	120.76

There are no chirality outliers.

There are no torsion outliers.

There are no ring outliers.

2 monomers are involved in 4 short contacts:

Mol	Chain	Res	Type	Clashes	Symm-Clashes
1	D	109	TRQ	2	0
1	H	109	TRQ	2	0

## 5.5 Carbohydrates [i](#)

There are no carbohydrates in this entry.

## 5.6 Ligand geometry [i](#)

2 ligands are modelled in this entry.

In the following table, the Counts columns list the number of bonds (or angles) for which Mogul statistics could be retrieved, the number of bonds (or angles) that are observed in the model and the number of bonds (or angles) that are defined in the chemical component dictionary. The Link column lists molecule types, if any, to which the group is linked. The Z score for a bond length (or angle) is the number of standard deviations the observed value is removed from the expected value. A bond length (or angle) with  $|Z| > 2$  is considered an outlier worth inspection. RMSZ is the root-mean-square of all Z scores of the bond lengths (or angles).

Mol	Type	Chain	Res	Link	Bond lengths			Bond angles		
					Counts	RMSZ	$\# Z  > 2$	Counts	RMSZ	$\# Z  > 2$
3	TSH	D	2	1	11,13,13	1.15	1 (9%)	8,17,17	0.95	0
3	TSH	H	1	1	11,13,13	1.22	1 (9%)	8,17,17	0.92	0

In the following table, the Chirals column lists the number of chiral outliers, the number of chiral centers analysed, the number of these observed in the model and the number defined in the chemical

component dictionary. Similar counts are reported in the Torsion and Rings columns. '-' means no outliers of that kind were identified.

Mol	Type	Chain	Res	Link	Chirals	Torsions	Rings
3	TSH	D	2	1	-	0/0/3/3	0/2/2/2
3	TSH	H	1	1	-	0/0/3/3	0/2/2/2

All (2) bond length outliers are listed below:

Mol	Chain	Res	Type	Atoms	Z	Observed(Å)	Ideal(Å)
3	H	1	TSH	CE3-CD2	-2.43	1.37	1.42
3	D	2	TSH	CE3-CD2	-2.20	1.37	1.42

There are no bond angle outliers.

There are no chirality outliers.

There are no torsion outliers.

There are no ring outliers.

1 monomer is involved in 1 short contact:

Mol	Chain	Res	Type	Clashes	Symm-Clashes
3	D	2	TSH	1	0

## 5.7 Other polymers [i](#)

There are no such residues in this entry.

## 5.8 Polymer linkage issues [i](#)

There are no chain breaks in this entry.



## 6 Fit of model and data ⓘ

### 6.1 Protein, DNA and RNA chains ⓘ

In the following table, the column labelled ‘#RSRZ> 2’ contains the number (and percentage) of RSRZ outliers, followed by percent RSRZ outliers for the chain as percentile scores relative to all X-ray entries and entries of similar resolution. The OWAB column contains the minimum, median, 95<sup>th</sup> percentile and maximum values of the occupancy-weighted average B-factor per residue. The column labelled ‘Q< 0.9’ lists the number of (and percentage) of residues with an average occupancy less than 0.9.

Mol	Chain	Analysed	<RSRZ>	#RSRZ>2	OWAB(Å <sup>2</sup> )	Q<0.9
1	D	108/135 (80%)	0.15	4 (3%) 45 39	16, 21, 28, 35	0
1	H	104/135 (77%)	0.43	8 (7%) 16 16	16, 21, 31, 39	0
2	A	360/361 (99%)	0.00	7 (1%) 70 64	14, 19, 27, 38	0
2	B	361/361 (100%)	0.19	14 (3%) 43 37	15, 22, 33, 46	0
All	All	933/992 (94%)	0.14	33 (3%) 48 42	14, 20, 31, 46	0

All (33) RSRZ outliers are listed below:

Mol	Chain	Res	Type	RSRZ
2	B	73	ARG	7.1
2	B	303	ASP	7.1
2	A	431	GLY	5.5
1	H	71	GLU	5.1
2	A	75	VAL	4.9
1	H	116	PRO	4.6
2	B	263	ARG	4.4
2	A	73	ARG	4.2
2	A	432	GLY	3.8
1	H	179	LEU	3.7
2	B	304	GLU	3.5
2	B	433	THR	3.5
1	D	179	LEU	3.4
1	H	121	ASP	3.1
2	A	303	ASP	3.1
2	B	265	LYS	3.1
1	H	178	GLY	3.0
2	B	366	LYS	2.9
1	H	110	ILE	2.9
1	D	71	GLU	2.8
2	A	317	GLU	2.8

*Continued on next page...*

*Continued from previous page...*

Mol	Chain	Res	Type	RSRZ
1	H	123	LEU	2.8
1	H	76	ASP	2.7
2	B	75	VAL	2.7
2	B	308	ASP	2.7
1	D	145	ARG	2.6
2	B	306	LYS	2.6
2	B	302	GLY	2.2
1	D	76	ASP	2.2
2	B	242	CYS	2.2
2	B	316	ASP	2.2
2	A	321	LYS	2.2
2	B	297	SER	2.0

## 6.2 Non-standard residues in protein, DNA, RNA chains [i](#)

In the following table, the Atoms column lists the number of modelled atoms in the group and the number defined in the chemical component dictionary. LLDF column lists the quality of electron density of the group with respect to its neighbouring residues in protein, DNA or RNA chains. The B-factors column lists the minimum, median, 95<sup>th</sup> percentile and maximum values of B factors of atoms in the group. The column labelled 'Q< 0.9' lists the number of atoms with occupancy less than 0.9.

Mol	Type	Chain	Res	Atoms	RSCC	RSR	LLDF	B-factors(Å <sup>2</sup> )	Q<0.9
1	TRQ	H	109	15/17	0.96	0.05	-	18,19,22,24	0
1	TRQ	D	109	15/17	0.93	0.07	-	20,20,22,24	0

## 6.3 Carbohydrates [i](#)

There are no carbohydrates in this entry.

## 6.4 Ligands [i](#)

In the following table, the Atoms column lists the number of modelled atoms in the group and the number defined in the chemical component dictionary. LLDF column lists the quality of electron density of the group with respect to its neighbouring residues in protein, DNA or RNA chains. The B-factors column lists the minimum, median, 95<sup>th</sup> percentile and maximum values of B factors of atoms in the group. The column labelled 'Q< 0.9' lists the number of atoms with occupancy less than 0.9.

Mol	Type	Chain	Res	Atoms	RSCC	RSR	LLDF	B-factors(Å <sup>2</sup> )	Q<0.9
3	TSH	D	2	12/12	0.85	0.11	3.07	24,28,30,31	0

*Continued on next page...*

*Continued from previous page...*

Mol	Type	Chain	Res	Atoms	RSCC	RSR	LLDF	B-factors( $\text{\AA}^2$ )	Q<0.9
3	TSH	H	1	12/12	0.85	0.10	1.96	24,28,30,31	0

## 6.5 Other polymers [i](#)

There are no such residues in this entry.