



Full wwPDB X-ray Structure Validation Report ⓘ

Jan 31, 2016 – 06:22 PM GMT

PDB ID : 1AH3
Title : ALDOSE REDUCTASE COMPLEXED WITH TOLRESTAT INHIBITOR
Authors : Moras, D.; Podjarny, A.
Deposited on : 1997-04-12
Resolution : 2.30 Å(reported)

This is a Full wwPDB X-ray Structure Validation Report for a publicly released PDB entry.
We welcome your comments at validation@mail.wwpdb.org
A user guide is available at
<http://wwpdb.org/validation/2016/XrayValidationReportHelp>
with specific help available everywhere you see the ⓘ symbol.

The following versions of software and data (see [references ⓘ](#)) were used in the production of this report:

MolProbity : 4.02b-467
Mogul : 1.7 (RC4), CSD as536be (2015)
Xtriage (Phenix) : 1.9-1692
EDS : rb-20026688
Percentile statistics : 20151230.v01 (using entries in the PDB archive December 30th 2015)
Refmac : 5.8.0135
CCP4 : 6.5.0
Ideal geometry (proteins) : Engh & Huber (2001)
Ideal geometry (DNA, RNA) : Parkinson et al. (1996)
Validation Pipeline (wwPDB-VP) : trunk26865

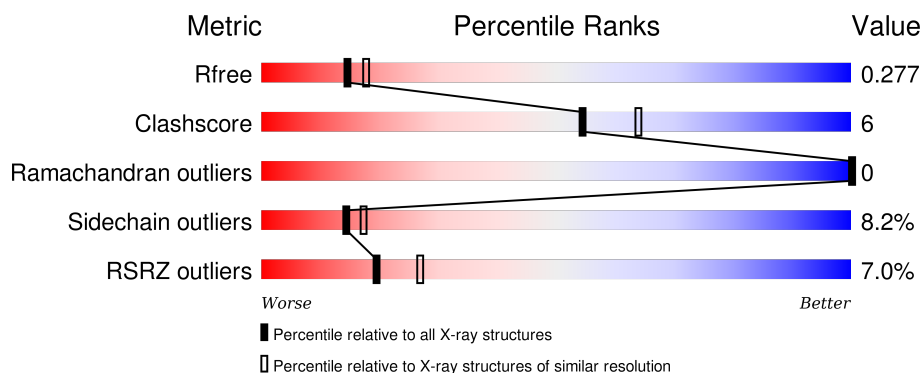
1 Overall quality at a glance ⓘ

The following experimental techniques were used to determine the structure:

X-RAY DIFFRACTION

The reported resolution of this entry is 2.30 Å.

Percentile scores (ranging between 0-100) for global validation metrics of the entry are shown in the following graphic. The table shows the number of entries on which the scores are based.



Metric	Whole archive (#Entries)	Similar resolution (#Entries, resolution range(Å))
R_{free}	91344	3852 (2.30-2.30)
Clashscore	102246	4452 (2.30-2.30)
Ramachandran outliers	100387	4410 (2.30-2.30)
Sidechain outliers	100360	4409 (2.30-2.30)
RSRZ outliers	91569	3857 (2.30-2.30)

The table below summarises the geometric issues observed across the polymeric chains and their fit to the electron density. The red, orange, yellow and green segments on the lower bar indicate the fraction of residues that contain outliers for ≥ 3 , 2, 1 and 0 types of geometric quality criteria. A grey segment represents the fraction of residues that are not modelled. The numeric value for each fraction is indicated below the corresponding segment, with a dot representing fractions $\leq 5\%$. The upper red bar (where present) indicates the fraction of residues that have poor fit to the electron density. The numeric value is given above the bar.

Mol	Chain	Length	Quality of chain
1	A	315	<div> <div>7%</div> <div>77%</div> <div>19%</div> <div>.</div> </div>

2 Entry composition [i](#)

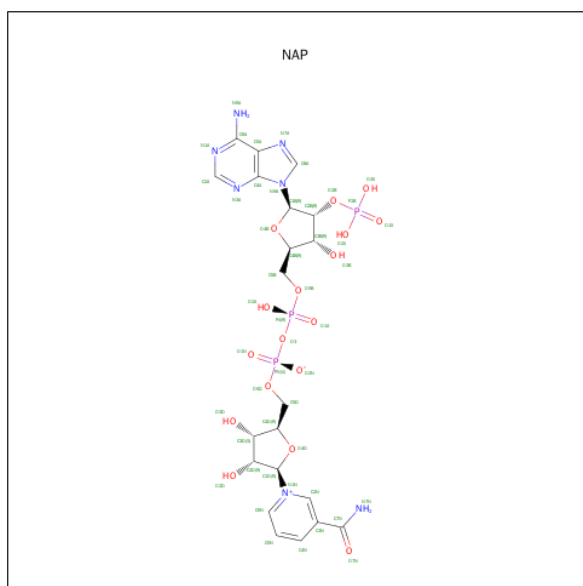
There are 4 unique types of molecules in this entry. The entry contains 3288 atoms, of which 543 are hydrogens and 0 are deuteriums.

In the tables below, the ZeroOcc column contains the number of atoms modelled with zero occupancy, the AltConf column contains the number of residues with at least one atom in alternate conformation and the Trace column contains the number of residues modelled with at most 2 atoms.

- Molecule 1 is a protein called ALDOSE REDUCTASE.

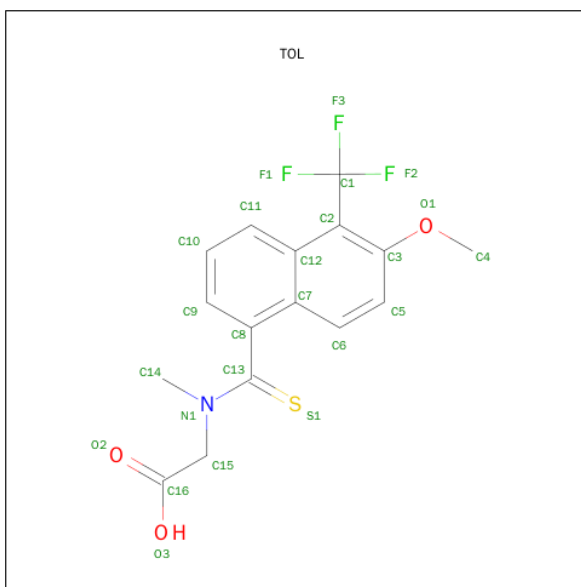
Mol	Chain	Residues	Atoms						ZeroOcc	AltConf	Trace
1	A	315	Total	C	H	N	O	S	0	0	0
			3059	1623	536	420	469	11			

- Molecule 2 is NADP NICOTINAMIDE-ADENINE-DINUCLEOTIDE PHOSPHATE (three-letter code: NAP) (formula: $C_{21}H_{28}N_7O_{17}P_3$).



Mol	Chain	Residues	Atoms						ZeroOcc	AltConf
2	A	1	Total	C	H	N	O	P	0	0
			55	21	7	7	17	3		

- Molecule 3 is TOLRESTAT (three-letter code: TOL) (formula: $C_{16}H_{14}F_3NO_3S$).



Mol	Chain	Residues	Atoms						ZeroOcc	AltConf
3	A	1	Total	C	F	N	O	S	0	0
			24	16	3	1	3	1		

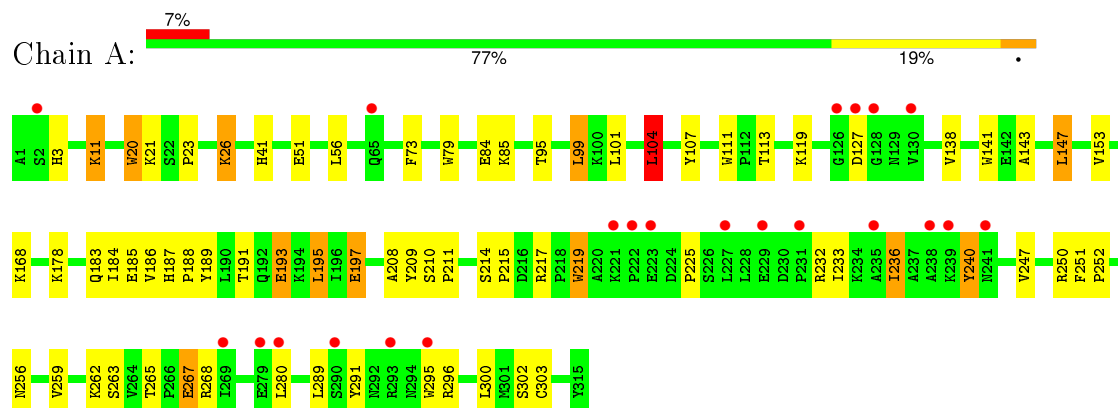
- Molecule 4 is water.

Mol	Chain	Residues	Atoms		ZeroOcc	AltConf
4	A	150	Total	O	1	0
			150	150		

3 Residue-property plots [i](#)

These plots are drawn for all protein, RNA and DNA chains in the entry. The first graphic for a chain summarises the proportions of errors displayed in the second graphic. The second graphic shows the sequence view annotated by issues in geometry and electron density. Residues are color-coded according to the number of geometric quality criteria for which they contain at least one outlier: green = 0, yellow = 1, orange = 2 and red = 3 or more. A red dot above a residue indicates a poor fit to the electron density ($\text{RSRZ} > 2$). Stretches of 2 or more consecutive residues without any outlier are shown as a green connector. Residues present in the sample, but not in the model, are shown in grey.

• Molecule 1: ALDOSE REDUCTASE



4 Data and refinement statistics

Property	Value	Source
Space group	P 43 21 2	Depositor
Cell constants a, b, c, α , β , γ	68.42Å 68.42Å 153.56Å 90.00° 90.00° 90.00°	Depositor
Resolution (Å)	6.00 – 2.30 14.94 – 2.30	Depositor EDS
% Data completeness (in resolution range)	91.0 (6.00-2.30) 91.6 (14.94-2.30)	Depositor EDS
R_{merge}	(Not available)	Depositor
R_{sym}	0.04	Depositor
$\langle I/\sigma(I) \rangle$ ¹	7.26 (at 2.29Å)	Xtriage
Refinement program	X-PLOR 3.1	Depositor
R, R_{free}	0.207 , 0.290 0.200 , 0.277	Depositor DCC
R_{free} test set	1474 reflections (11.35%)	DCC
Wilson B-factor (Å ²)	35.2	Xtriage
Anisotropy	0.460	Xtriage
Bulk solvent k_{sol} (e/Å ³), B_{sol} (Å ²)	0.32 , 88.7	EDS
Estimated twinning fraction	No twinning to report.	Xtriage
L-test for twinning ²	$\langle L \rangle = 0.50$, $\langle L^2 \rangle = 0.33$	Xtriage
Outliers	0 of 15449 reflections	Xtriage
F_o, F_c correlation	0.95	EDS
Total number of atoms	3288	wwPDB-VP
Average B, all atoms (Å ²)	36.0	wwPDB-VP

Xtriage's analysis on translational NCS is as follows: *The largest off-origin peak in the Patterson function is 5.72% of the height of the origin peak. No significant pseudotranslation is detected.*

¹Intensities estimated from amplitudes.

²Theoretical values of $\langle |L| \rangle$, $\langle L^2 \rangle$ for acentric reflections are 0.5, 0.375 respectively for untwinned datasets, and 0.333, 0.2 for perfectly twinned datasets.

5 Model quality

5.1 Standard geometry

Bond lengths and bond angles in the following residue types are not validated in this section: NAP, AYA, TOL

The Z score for a bond length (or angle) is the number of standard deviations the observed value is removed from the expected value. A bond length (or angle) with $|Z| > 5$ is considered an outlier worth inspection. RMSZ is the root-mean-square of all Z scores of the bond lengths (or angles).

Mol	Chain	Bond lengths		Bond angles	
		RMSZ	$\# Z > 5$	RMSZ	$\# Z > 5$
1	A	0.74	0/2580	1.30	21/3506 (0.6%)

There are no bond length outliers.

All (21) bond angle outliers are listed below:

Mol	Chain	Res	Type	Atoms	Z	Observed($^{\circ}$)	Ideal($^{\circ}$)
1	A	79	TRP	CD1-CG-CD2	8.48	113.09	106.30
1	A	296	ARG	NE-CZ-NH1	8.20	124.40	120.30
1	A	141	TRP	CD1-CG-CD2	8.05	112.74	106.30
1	A	79	TRP	CE2-CD2-CG	-8.02	100.88	107.30
1	A	219	TRP	CD1-CG-CD2	7.76	112.50	106.30
1	A	219	TRP	CE2-CD2-CG	-7.18	101.56	107.30
1	A	111	TRP	CE2-CD2-CG	-7.09	101.63	107.30
1	A	141	TRP	CE2-CD2-CG	-7.08	101.64	107.30
1	A	296	ARG	NE-CZ-NH2	-6.78	116.91	120.30
1	A	111	TRP	CD1-CG-CD2	6.75	111.70	106.30
1	A	79	TRP	CG-CD2-CE3	6.23	139.51	133.90
1	A	295	TRP	CD1-CG-CD2	5.79	110.93	106.30
1	A	104	LEU	CA-CB-CG	5.46	127.85	115.30
1	A	79	TRP	CG-CD1-NE1	-5.40	104.70	110.10
1	A	217	ARG	NE-CZ-NH1	5.39	123.00	120.30
1	A	209	TYR	CA-CB-CG	5.38	123.62	113.40
1	A	295	TRP	CE2-CD2-CG	-5.33	103.04	107.30
1	A	240	TYR	CB-CG-CD1	-5.18	117.89	121.00
1	A	20	TRP	CD1-CG-CD2	5.16	110.43	106.30
1	A	217	ARG	NE-CZ-NH2	-5.06	117.77	120.30
1	A	141	TRP	CG-CD1-NE1	-5.00	105.10	110.10

There are no chirality outliers.

There are no planarity outliers.

5.2 Too-close contacts ⓘ

In the following table, the Non-H and H(model) columns list the number of non-hydrogen atoms and hydrogen atoms in the chain respectively. The H(added) column lists the number of hydrogen atoms added and optimized by MolProbity. The Clashes column lists the number of clashes within the asymmetric unit, whereas Symm-Clashes lists symmetry related clashes.

Mol	Chain	Non-H	H(model)	H(added)	Clashes	Symm-Clashes
1	A	2523	536	2518	33	0
2	A	48	7	25	5	0
3	A	24	0	13	1	0
4	A	150	0	0	1	0
All	All	2745	543	2556	33	0

The all-atom clashscore is defined as the number of clashes found per 1000 atoms (including hydrogen atoms). The all-atom clashscore for this structure is 6.

All (33) close contacts within the same asymmetric unit are listed below, sorted by their clash magnitude.

Atom-1	Atom-2	Interatomic distance (Å)	Clash overlap (Å)
1:A:20:TRP:CE3	1:A:21:LYS:HE3	2.36	0.60
1:A:233:ILE:HA	1:A:236:ILE:HG22	1.84	0.58
1:A:252:PRO:HG3	4:A:533:HOH:O	2.04	0.56
1:A:247:VAL:HG23	1:A:280:LEU:HD21	1.88	0.55
1:A:240:TYR:OH	1:A:280:LEU:HA	2.10	0.52
1:A:23:PRO:HG2	1:A:26:LYS:HG3	1.91	0.52
1:A:104:LEU:HB2	1:A:153:VAL:HG12	1.92	0.51
1:A:193:GLU:O	1:A:197:GLU:HB2	2.11	0.50
1:A:184:ILE:HD13	1:A:195:LEU:HD13	1.93	0.49
1:A:138:VAL:HG21	1:A:168:LYS:HD2	1.94	0.49
1:A:262:LYS:O	2:A:318:NAP:H8A	2.13	0.48
1:A:3:HIS:NE2	1:A:11:LYS:HG2	2.29	0.48
1:A:95:THR:O	1:A:99:LEU:HB2	2.14	0.48
1:A:185:GLU:OE2	1:A:187:HIS:HE1	1.97	0.47
1:A:219:TRP:HH2	3:A:320:TOL:H143	1.80	0.47
1:A:147:LEU:HB3	1:A:153:VAL:HG22	1.97	0.47
1:A:251:PHE:HB3	1:A:252:PRO:HD3	1.96	0.47
1:A:113:THR:HG21	1:A:303:CYS:SG	2.55	0.46
1:A:41:HIS:HA	1:A:73:PHE:O	2.15	0.46
1:A:186:VAL:HB	1:A:208:ALA:HB1	1.96	0.46
1:A:107:TYR:HB2	1:A:153:VAL:HG11	1.98	0.46
1:A:191:THR:HG21	1:A:289:LEU:HA	1.98	0.45
1:A:183:GLN:OE1	2:A:318:NAP:H2N	2.17	0.44

Continued on next page...

Continued from previous page...

Atom-1	Atom-2	Interatomic distance (Å)	Clash overlap (Å)
1:A:268:ARG:HD2	2:A:318:NAP:C6A	2.48	0.44
1:A:263:SER:HA	2:A:318:NAP:O2X	2.18	0.44
1:A:210:SER:N	1:A:211:PRO:HD3	2.34	0.43
1:A:265:THR:HG22	1:A:267:GLU:HG2	2.01	0.43
1:A:189:TYR:HE2	1:A:225:PRO:HB2	1.83	0.43
1:A:51:GLU:HB3	1:A:99:LEU:HD13	2.02	0.42
1:A:85:LYS:HG2	1:A:143:ALA:HB2	2.02	0.41
1:A:232:ARG:HB3	1:A:291:TYR:OH	2.20	0.41
1:A:189:TYR:CE2	1:A:225:PRO:HB2	2.55	0.41
1:A:215:PRO:HD2	2:A:318:NAP:H4B	2.03	0.41

There are no symmetry-related clashes.

5.3 Torsion angles ⓘ

5.3.1 Protein backbone ⓘ

In the following table, the Percentiles column shows the percent Ramachandran outliers of the chain as a percentile score with respect to all X-ray entries followed by that with respect to entries of similar resolution.

The Analysed column shows the number of residues for which the backbone conformation was analysed, and the total number of residues.

Mol	Chain	Analysed	Favoured	Allowed	Outliers	Percentiles	
1	A	313/315 (99%)	300 (96%)	13 (4%)	0	100	100

There are no Ramachandran outliers to report.

5.3.2 Protein sidechains ⓘ

In the following table, the Percentiles column shows the percent sidechain outliers of the chain as a percentile score with respect to all X-ray entries followed by that with respect to entries of similar resolution.

The Analysed column shows the number of residues for which the sidechain conformation was analysed, and the total number of residues.

Mol	Chain	Analysed	Rotameric	Outliers	Percentiles	
1	A	279/279 (100%)	256 (92%)	23 (8%)	14	17

All (23) residues with a non-rotameric sidechain are listed below:

Mol	Chain	Res	Type
1	A	11	LYS
1	A	26	LYS
1	A	56	LEU
1	A	84	GLU
1	A	99	LEU
1	A	101	LEU
1	A	104	LEU
1	A	119	LYS
1	A	127	ASP
1	A	147	LEU
1	A	178	LYS
1	A	188	PRO
1	A	193	GLU
1	A	195	LEU
1	A	197	GLU
1	A	214	SER
1	A	236	ILE
1	A	250	ARG
1	A	256	ASN
1	A	259	VAL
1	A	267	GLU
1	A	300	LEU
1	A	302	SER

Some sidechains can be flipped to improve hydrogen bonding and reduce clashes. All (2) such sidechains are listed below:

Mol	Chain	Res	Type
1	A	93	GLN
1	A	187	HIS

5.3.3 RNA ⓘ

There are no RNA molecules in this entry.

5.4 Non-standard residues in protein, DNA, RNA chains ⓘ

1 non-standard protein/DNA/RNA residue is modelled in this entry.

In the following table, the Counts columns list the number of bonds (or angles) for which Mogul statistics could be retrieved, the number of bonds (or angles) that are observed in the model and

the number of bonds (or angles) that are defined in the chemical component dictionary. The Link column lists molecule types, if any, to which the group is linked. The Z score for a bond length (or angle) is the number of standard deviations the observed value is removed from the expected value. A bond length (or angle) with $|Z| > 2$ is considered an outlier worth inspection. RMSZ is the root-mean-square of all Z scores of the bond lengths (or angles).

Mol	Type	Chain	Res	Link	Bond lengths			Bond angles		
					Counts	RMSZ	$\# Z > 2$	Counts	RMSZ	$\# Z > 2$
1	AYA	A	1	1	6,7,8	0.84	0	7,8,10	1.63	1 (14%)

In the following table, the Chirals column lists the number of chiral outliers, the number of chiral centers analysed, the number of these observed in the model and the number defined in the chemical component dictionary. Similar counts are reported in the Torsion and Rings columns. '-' means no outliers of that kind were identified.

Mol	Type	Chain	Res	Link	Chirals	Torsions	Rings
1	AYA	A	1	1	-	0/4/6/8	0/0/0/0

There are no bond length outliers.

All (1) bond angle outliers are listed below:

Mol	Chain	Res	Type	Atoms	Z	Observed(°)	Ideal(°)
1	A	1	AYA	CA-N-CT	-2.75	117.20	121.46

There are no chirality outliers.

There are no torsion outliers.

There are no ring outliers.

No monomer is involved in short contacts.

5.5 Carbohydrates [i](#)

There are no carbohydrates in this entry.

5.6 Ligand geometry [i](#)

2 ligands are modelled in this entry.

In the following table, the Counts columns list the number of bonds (or angles) for which Mogul statistics could be retrieved, the number of bonds (or angles) that are observed in the model and the number of bonds (or angles) that are defined in the chemical component dictionary. The Link column lists molecule types, if any, to which the group is linked. The Z score for a bond length (or angle) is the number of standard deviations the observed value is removed from the expected

value. A bond length (or angle) with $|Z| > 2$ is considered an outlier worth inspection. RMSZ is the root-mean-square of all Z scores of the bond lengths (or angles).

Mol	Type	Chain	Res	Link	Bond lengths			Bond angles		
					Counts	RMSZ	$\# Z > 2$	Counts	RMSZ	$\# Z > 2$
2	NAP	A	318	-	42,52,52	1.03	4 (9%)	54,80,80	1.78	8 (14%)
3	TOL	A	320	-	20,25,25	1.72	4 (20%)	29,37,37	1.52	6 (20%)

In the following table, the Chirals column lists the number of chiral outliers, the number of chiral centers analysed, the number of these observed in the model and the number defined in the chemical component dictionary. Similar counts are reported in the Torsion and Rings columns. '-' means no outliers of that kind were identified.

Mol	Type	Chain	Res	Link	Chirals	Torsions	Rings
2	NAP	A	318	-	-	0/27/67/67	0/5/5/5
3	TOL	A	320	-	-	0/18/20/20	0/2/2/2

All (8) bond length outliers are listed below:

Mol	Chain	Res	Type	Atoms	Z	Observed(Å)	Ideal(Å)
3	A	320	TOL	O1-C3	-2.89	1.32	1.37
2	A	318	NAP	C3N-C7N	2.11	1.53	1.50
2	A	318	NAP	C6N-N1N	2.19	1.41	1.35
2	A	318	NAP	O4D-C1D	2.35	1.44	1.41
3	A	320	TOL	C13-S1	2.65	1.71	1.66
2	A	318	NAP	O4B-C1B	2.71	1.44	1.41
3	A	320	TOL	C1-C2	2.88	1.54	1.51
3	A	320	TOL	C3-C2	4.44	1.42	1.38

All (14) bond angle outliers are listed below:

Mol	Chain	Res	Type	Atoms	Z	Observed(°)	Ideal(°)
2	A	318	NAP	N3A-C2A-N1A	-9.26	121.81	128.89
3	A	320	TOL	C4-O1-C3	-3.03	112.95	117.54
3	A	320	TOL	C5-C3-C2	-2.79	119.35	122.39
3	A	320	TOL	C6-C7-C8	-2.57	119.47	123.27
2	A	318	NAP	C4D-O4D-C1D	-2.30	107.19	109.72
2	A	318	NAP	C1B-N9A-C4A	-2.12	123.74	126.94
3	A	320	TOL	C9-C8-C13	-2.11	116.88	119.55
2	A	318	NAP	C4B-O4B-C1B	-2.03	107.49	109.72
3	A	320	TOL	O1-C3-C5	-2.00	120.98	124.35
2	A	318	NAP	O3X-P2B-O2X	2.03	115.11	107.38
2	A	318	NAP	PN-O3-PA	2.25	139.04	132.73
2	A	318	NAP	O4B-C1B-N9A	2.89	114.16	108.10

Continued on next page...

Continued from previous page...

Mol	Chain	Res	Type	Atoms	Z	Observed($^{\circ}$)	Ideal($^{\circ}$)
2	A	318	NAP	C4A-C5A-N7A	3.76	112.94	109.48
3	A	320	TOL	C3-C2-C12	3.81	119.73	117.73

There are no chirality outliers.

There are no torsion outliers.

There are no ring outliers.

2 monomers are involved in 6 short contacts:

Mol	Chain	Res	Type	Clashes	Symm-Clashes
2	A	318	NAP	5	0
3	A	320	TOL	1	0

5.7 Other polymers [i](#)

There are no such residues in this entry.

5.8 Polymer linkage issues [i](#)

There are no chain breaks in this entry.

6 Fit of model and data

6.1 Protein, DNA and RNA chains

In the following table, the column labelled ‘#RSRZ> 2’ contains the number (and percentage) of RSRZ outliers, followed by percent RSRZ outliers for the chain as percentile scores relative to all X-ray entries and entries of similar resolution. The OWAB column contains the minimum, median, 95th percentile and maximum values of the occupancy-weighted average B-factor per residue. The column labelled ‘Q< 0.9’ lists the number of (and percentage) of residues with an average occupancy less than 0.9.

Mol	Chain	Analysed	<RSRZ>	#RSRZ>2		OWAB(Å ²)	Q<0.9
1	A	314/315 (99%)	0.17	22 (7%)	19 27	13, 35, 72, 81	2 (0%)

All (22) RSRZ outliers are listed below:

Mol	Chain	Res	Type	RSRZ
1	A	127	ASP	3.8
1	A	279	GLU	3.7
1	A	238	ALA	3.7
1	A	241	ASN	3.7
1	A	128	GLY	3.6
1	A	235	ALA	3.5
1	A	239	LYS	3.1
1	A	293	ARG	2.8
1	A	231	PRO	2.7
1	A	222	PRO	2.6
1	A	227	LEU	2.6
1	A	65	GLN	2.6
1	A	280	LEU	2.4
1	A	290	SER	2.4
1	A	221	LYS	2.3
1	A	126	GLY	2.3
1	A	2	SER	2.2
1	A	223	GLU	2.2
1	A	269	ILE	2.2
1	A	130	VAL	2.2
1	A	295	TRP	2.1
1	A	229	GLU	2.1

6.2 Non-standard residues in protein, DNA, RNA chains [i](#)

In the following table, the Atoms column lists the number of modelled atoms in the group and the number defined in the chemical component dictionary. LLDF column lists the quality of electron density of the group with respect to its neighbouring residues in protein, DNA or RNA chains. The B-factors column lists the minimum, median, 95th percentile and maximum values of B factors of atoms in the group. The column labelled 'Q< 0.9' lists the number of atoms with occupancy less than 0.9.

Mol	Type	Chain	Res	Atoms	RSCC	RSR	LLDF	B-factors(Å ²)	Q<0.9
1	AYA	A	1	8/9	0.66	0.44	-	20,76,83,85	0

6.3 Carbohydrates [i](#)

There are no carbohydrates in this entry.

6.4 Ligands [i](#)

In the following table, the Atoms column lists the number of modelled atoms in the group and the number defined in the chemical component dictionary. LLDF column lists the quality of electron density of the group with respect to its neighbouring residues in protein, DNA or RNA chains. The B-factors column lists the minimum, median, 95th percentile and maximum values of B factors of atoms in the group. The column labelled 'Q< 0.9' lists the number of atoms with occupancy less than 0.9.

Mol	Type	Chain	Res	Atoms	RSCC	RSR	LLDF	B-factors(Å ²)	Q<0.9
2	NAP	A	318	48/48	0.95	0.11	-0.40	8,29,43,45	0
3	TOL	A	320	24/24	0.94	0.11	-0.81	16,34,39,47	0

6.5 Other polymers [i](#)

There are no such residues in this entry.