



Full wwPDB NMR Structure Validation Report ⓘ

Apr 26, 2016 – 01:41 PM BST

PDB ID : 1AKK
Title : SOLUTION STRUCTURE OF OXIDIZED HORSE HEART CYTOCHROME C, NMR, MINIMIZED AVERAGE STRUCTURE
Authors : Banci, L.; Bertini, I.; Gray, H.B.; Luchinat, C.; Reddig, T.; Rosato, A.; Turano, P.
Deposited on : 1997-05-22

This is a Full wwPDB NMR Structure Validation Report for a publicly released PDB entry.
We welcome your comments at validation@mail.wwpdb.org
A user guide is available at
<http://wwpdb.org/validation/2016/NMRValidationReportHelp>
with specific help available everywhere you see the ⓘ symbol.

The following versions of software and data (see [references ⓘ](#)) were used in the production of this report:

Cyrange : Kirchner and Güntert (2011)
NmrClust : Kelley et al. (1996)
MolProbity : 4.02b-467
Mogul : 1.7.1 (RC1), CSD as537be (2016)
Percentile statistics : 20151230.v01 (using entries in the PDB archive December 30th 2015)
RCI : v_1n_11_5_13_A (Berjanski et al., 2005)
PANAV : Wang et al. (2010)
ShiftChecker : rb-20027457
Ideal geometry (proteins) : Engh & Huber (2001)
Ideal geometry (DNA, RNA) : Parkinson et al. (1996)
Validation Pipeline (wwPDB-VP) : rb-20027457

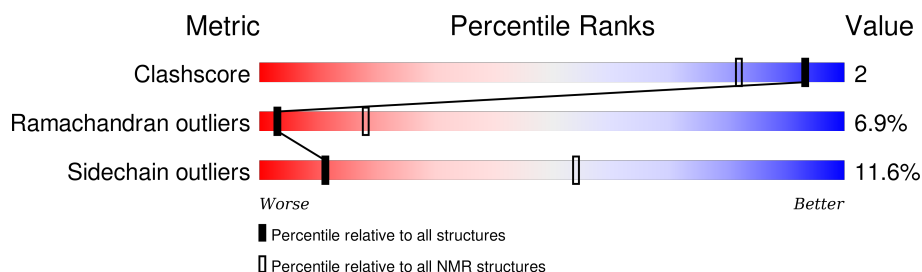
1 Overall quality at a glance

The following experimental techniques were used to determine the structure:

SOLUTION NMR

The overall completeness of chemical shifts assignment was not calculated.

Percentile scores (ranging between 0-100) for global validation metrics of the entry are shown in the following graphic. The table shows the number of entries on which the scores are based.



Metric	Whole archive (#Entries)	NMR archive (#Entries)
Clashscore	114402	11133
Ramachandran outliers	111179	9975
Sidechain outliers	111093	9958

The table below summarises the geometric issues observed across the polymeric chains and their fit to the experimental data. The red, orange, yellow and green segments indicate the fraction of residues that contain outliers for ≥ 3 , 2, 1 and 0 types of geometric quality criteria. A cyan segment indicates the fraction of residues that are not part of the well-defined cores, and a grey segment represents the fraction of residues that are not modelled. The numeric value for each fraction is indicated below the corresponding segment, with a dot representing fractions $\leq 5\%$

Mol	Chain	Length	Quality of chain
1	A	104	 78% 18% •

2 Ensemble composition and analysis ⓘ

This entry contains 1 models. Identification of well-defined residues and clustering analysis are not possible.

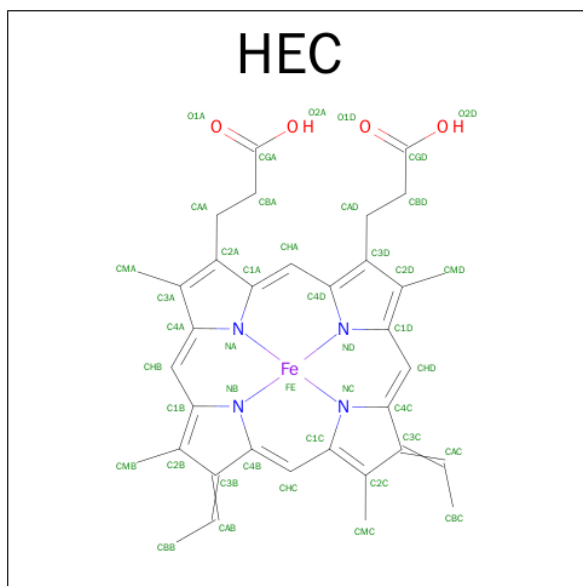
3 Entry composition

There are 2 unique types of molecules in this entry. The entry contains 1745 atoms, of which 878 are hydrogens and 1 is deuterium.

- Molecule 1 is a protein called CYTOCHROME C.

Mol	Chain	Residues	Atoms							Trace
1	A	104	Total	C	D	H	N	O	S	0
			1670	524	1	846	144	151	4	

- Molecule 2 is HEME C (three-letter code: HEC) (formula: $\text{C}_{34}\text{H}_{34}\text{FeN}_4\text{O}_4$).




Mol	Chain	Residues	Atoms					
2	A	1	Total	C	Fe	H	N	O
			75	34	1	32	4	4

4 Residue-property plots [i](#)

These plots are provided for all protein, RNA and DNA chains in the entry. The first graphic is the same as shown in the summary in section 1 of this report. The second graphic shows the sequence where residues are colour-coded according to the number of geometric quality criteria for which they contain at least one outlier: green = 0, yellow = 1, orange = 2 and red = 3 or more. Stretches of 2 or more consecutive residues without any outliers are shown as green connectors. Residues which are classified as ill-defined in the NMR ensemble, are shown in cyan with an underline colour-coded according to the previous scheme. Residues which were present in the experimental sample, but not modelled in the final structure are shown in grey.

- Molecule 1: CYTOCHROME C

Chain A: 



5 Refinement protocol and experimental data overview

The models were refined using the following method: *DISTANCE GEOMETRY*.

Of the 35 calculated structures, 1 were deposited, based on the following criterion: *LEAST RESTRAINT VIOLATION*.

The following table shows the software used for structure solution, optimisation and refinement.

Software name	Classification	Version
AMBER	refinement	
DYANA	structure solution	

The following table shows chemical shift validation statistics as aggregates over all chemical shift files. Detailed validation can be found in section 7 of this report.

Chemical shift file(s)	BMRB entry 5660
Number of chemical shift lists	5
Total number of shifts	39
Number of shifts mapped to atoms	0
Number of unparsed shifts	0
Number of shifts with mapping errors	39
Number of shifts with mapping warnings	0
Assignment completeness (well-defined parts)	0%

No validations of the models with respect to experimental NMR restraints is performed at this time.

6 Model quality

6.1 Standard geometry

Bond lengths and bond angles in the following residue types are not validated in this section: HEC

There are no covalent bond-length or bond-angle outliers.

Chiral center outliers are detected by calculating the chiral volume of a chiral center and verifying if the center is modelled as a planar moiety or with the opposite hand. A planarity outlier is detected by checking planarity of atoms in a peptide group, atoms in a mainchain group or atoms of a sidechain that are expected to be planar.

Mol	Chain	Chirality	Planarity
1	A	0	6
All	All	0	6

There are no bond-length outliers.

There are no bond-angle outliers.

There are no chirality outliers.

All planar outliers are listed below.

Mol	Chain	Res	Type	Group
1	A	91	ARG	Sidechain
1	A	74	TYR	Sidechain
1	A	48	TYR	Sidechain
1	A	18	HIS	Sidechain
1	A	97	TYR	Sidechain
1	A	10	PHE	Sidechain

6.2 Too-close contacts

In the following table, the Non-H and H(model) columns list the number of non-hydrogen atoms and hydrogen atoms in each chain respectively. The H(added) column lists the number of hydrogen atoms added and optimized by MolProbity. The Clashes column lists the number of clashes averaged over the ensemble.

Mol	Chain	Non-H	H(model)	H(added)	Clashes
1	A	824	846	847	2
2	A	43	32	30	1
All	All	867	878	877	3

The all-atom clashscore is defined as the number of clashes found per 1000 atoms (including hydrogen atoms). The all-atom clashscore for this structure is 2.

All clashes are listed below, sorted by their clash magnitude.

Atom-1	Atom-2	Clash(Å)	Distance(Å)
2:A:105:HEC:HBB3	2:A:105:HEC:HMB1	0.62	1.71
1:A:11:VAL:HA	1:A:15:ALA:HB2	0.44	1.90
1:A:85:ILE:CG2	1:A:90:GLU:CB	0.41	2.99

6.3 Torsion angles [i](#)

6.3.1 Protein backbone [i](#)

In the following table, the Percentiles column shows the percent Ramachandran outliers of the chain as a percentile score with respect to all PDB entries followed by that with respect to all NMR entries. The Analysed column shows the number of residues for which the backbone conformation was analysed and the total number of residues.

Mol	Chain	Analysed	Favoured	Allowed	Outliers	Percentiles	
1	A	102/104 (98%)	74 (73%)	21 (21%)	7 (7%)	3	18
All	All	102/104 (98%)	74 (73%)	21 (21%)	7 (7%)	3	18

All 7 Ramachandran outliers are listed below. They are sorted by the frequency of occurrence in the ensemble.

Mol	Chain	Res	Type
1	A	103	ASN
1	A	87	LYS
1	A	40	THR
1	A	42	GLN
1	A	81	ILE
1	A	86	LYS
1	A	14	CYS

6.3.2 Protein sidechains [i](#)

In the following table, the Percentiles column shows the percent sidechain outliers of the chain as a percentile score with respect to all PDB entries followed by that with respect to all NMR entries. The Analysed column shows the number of residues for which the sidechain conformation was analysed and the total number of residues.

Mol	Chain	Analysed	Rotameric	Outliers	Percentiles	
1	A	86/86 (100%)	76 (88%)	10 (12%)	11	54
All	All	86/86 (100%)	76 (88%)	10 (12%)	11	54

All 10 residues with a non-rotameric sidechain are listed below. They are sorted by the frequency of occurrence in the ensemble.

Mol	Chain	Res	Type
1	A	78	THR
1	A	90	GLU
1	A	33	HIS
1	A	55	LYS
1	A	63	THR
1	A	102	THR
1	A	81	ILE
1	A	91	ARG
1	A	85	ILE
1	A	95	ILE

6.3.3 RNA [i](#)

There are no RNA molecules in this entry.

6.4 Non-standard residues in protein, DNA, RNA chains [i](#)

There are no non-standard protein/DNA/RNA residues in this entry.

6.5 Carbohydrates [i](#)

There are no carbohydrates in this entry.

6.6 Ligand geometry [i](#)

1 ligand is modelled in this entry.

In the following table, the Counts columns list the number of bonds for which Mogul statistics could be retrieved, the number of bonds that are observed in the model and the number of bonds that are defined in the chemical component dictionary. The Link column lists molecule types, if any, to which the group is linked. The Z score for a bond length is the number of standard deviations the observed value is removed from the expected value. A bond length with $|Z| > 2$ is considered an outlier worth inspection. RMSZ is the average root-mean-square of all Z scores of the bond lengths.

Mol	Type	Chain	Res	Link	Bond lengths		
					Counts	RMSZ	#Z>2
2	HEC	A	105	1	24,50,50	0.89	0 (0%)

In the following table, the Counts columns list the number of angles for which Mogul statistics could be retrieved, the number of angles that are observed in the model and the number of angles that are defined in the chemical component dictionary. The Link column lists molecule types, if any, to which the group is linked. The Z score for a bond angle is the number of standard deviations the observed value is removed from the expected value. A bond angle with $|Z| > 2$ is considered an outlier worth inspection. RMSZ is the average root-mean-square of all Z scores of the bond angles.

Mol	Type	Chain	Res	Link	Bond angles		
					Counts	RMSZ	#Z>2
2	HEC	A	105	1	19,82,82	2.10	2 (10%)

In the following table, the Chirals column lists the number of chiral outliers, the number of chiral centers analysed, the number of these observed in the model and the number defined in the chemical component dictionary. Similar counts are reported in the Torsion and Rings columns. '-' means no outliers of that kind were identified.

Mol	Type	Chain	Res	Link	Chirals	Torsions	Rings
2	HEC	A	105	1	-	0,6,54,54	0,0,8,8

There are no bond-length outliers.

All angle outliers are listed below. They are sorted according to the Z-score.

Mol	Chain	Res	Type	Atoms	Z	Observed(°)	Ideal(°)
2	A	105	HEC	CBC-CAC-C3C	5.95	114.33	127.34
2	A	105	HEC	CBB-CAB-C3B	5.43	115.47	127.34

There are no chirality outliers.

There are no torsion outliers.

There are no ring outliers.

6.7 Other polymers

There are no such molecules in this entry.

6.8 Polymer linkage issues ⓘ

There are no chain breaks in this entry.

7 Chemical shift validation

The completeness of assignment taking into account all chemical shift lists is 0% for the well-defined parts and 0% for the entire structure.

7.1 Chemical shift list 1

File name: BMRB entry 5660

Chemical shift list name: *assigned_chem_shift_list_1*

7.1.1 Bookkeeping

The following table shows the results of parsing the chemical shift list and reports the number of nuclei with statistically unusual chemical shifts.

Total number of shifts	7
Number of shifts mapped to atoms	0
Number of unparsed shifts	0
Number of shifts with mapping errors	7
Number of shifts with mapping warnings	0
Number of shift outliers (ShiftChecker)	6

The following assigned chemical shifts were not mapped to the molecules present in the coordinate file.

- Chain not found in structure. All 7 occurrences are reported below.

Chain	Res	Type	Atom	Shift Data		
				Value	Uncertainty	Ambiguity
UNMAPPED	30	PRO	HG2	-0.9	0.02	2
UNMAPPED	30	PRO	HD2	-4.43	0.02	2
UNMAPPED	59	TRP	HH2	7.51	0.02	2
UNMAPPED	18	HIS	HB2	9.0	0.02	2
UNMAPPED	30	PRO	HD3	-2.32	0.02	2
UNMAPPED	18	HIS	HD2	24.5	0.02	2
UNMAPPED	18	HIS	HB3	14.6	0.02	2

7.1.2 Chemical shift referencing

No chemical shift referencing corrections were calculated (not enough data).

7.1.3 Completeness of resonance assignments [i](#)

The following table shows the completeness of the chemical shift assignments for the well-defined regions of the structure. The overall completeness is 0%, i.e. 0 atoms were assigned a chemical shift out of a possible 1307. 0 out of 9 assigned methyl groups (LEU and VAL) were assigned stereospecifically.

	Total	¹ H	¹³ C	¹⁵ N
Backbone	0/512 (0%)	0/204 (0%)	0/208 (0%)	0/100 (0%)
Sidechain	0/695 (0%)	0/411 (0%)	0/251 (0%)	0/33 (0%)
Aromatic	0/100 (0%)	0/54 (0%)	0/43 (0%)	0/3 (0%)
Overall	0/1307 (0%)	0/669 (0%)	0/502 (0%)	0/136 (0%)

The following table shows the completeness of the chemical shift assignments for the full structure. The overall completeness is 0%, i.e. 0 atoms were assigned a chemical shift out of a possible 1307. 0 out of 9 assigned methyl groups (LEU and VAL) were assigned stereospecifically.

	Total	¹ H	¹³ C	¹⁵ N
Backbone	0/512 (0%)	0/204 (0%)	0/208 (0%)	0/100 (0%)
Sidechain	0/695 (0%)	0/411 (0%)	0/251 (0%)	0/33 (0%)
Aromatic	0/100 (0%)	0/54 (0%)	0/43 (0%)	0/3 (0%)
Overall	0/1307 (0%)	0/669 (0%)	0/502 (0%)	0/136 (0%)

7.1.4 Statistically unusual chemical shifts [i](#)

The following table lists the statistically unusual chemical shifts. These are statistical measures, and large deviations from the mean do not necessarily imply incorrect assignments. Molecules containing paramagnetic centres or hemes are expected to give rise to anomalous chemical shifts.

Mol	Chain	Res	Type	Atom	Shift, ppm	Expected range, ppm	Z-score
???	UNMAPPED	18	HIS	HD2	24.50	9.28 – 4.78	38.8
???	UNMAPPED	18	HIS	HB3	14.60	5.00 – 1.10	29.6
???	UNMAPPED	30	PRO	HD2	-4.43	5.45 – 1.85	-22.4
???	UNMAPPED	18	HIS	HB2	9.00	4.91 – 1.31	16.4
???	UNMAPPED	30	PRO	HD3	-2.32	5.52 – 1.72	-15.6
???	UNMAPPED	30	PRO	HG2	-0.90	3.48 – 0.38	-9.1

7.1.5 Random Coil Index (RCI) plots [i](#)

No *random coil index* (RCI) plot could be generated from the current chemical shift list (assigned_chem_shift_list_1). RCI is only applicable to proteins.

7.2 Chemical shift list 2

File name: BMRB entry 5660

Chemical shift list name: *assigned_chem_shift_list_2*

7.2.1 Bookkeeping

The following table shows the results of parsing the chemical shift list and reports the number of nuclei with statistically unusual chemical shifts.

Total number of shifts	14
Number of shifts mapped to atoms	0
Number of unparsed shifts	0
Number of shifts with mapping errors	14
Number of shifts with mapping warnings	0
Number of shift outliers (ShiftChecker)	0

The following assigned chemical shifts were not mapped to the molecules present in the coordinate file.

- Chain not found in structure. All 14 occurrences are reported below.

Chain	Res	Type	Atom	Shift Data		
				Value	Uncertainty	Ambiguity
UNMAPPED	1	HEM	HMA1	35.74	0.02	2
UNMAPPED	1	HEM	HAD1	-1.33	0.02	1
UNMAPPED	1	HEM	HAA2	19.14	0.02	1
UNMAPPED	1	HEM	HBB1	-2.63	0.02	2
UNMAPPED	1	HEM	HAD2	1.95	0.02	1
UNMAPPED	1	HEM	HBC1	3.1	0.02	2
UNMAPPED	1	HEM	HBA2	-0.59	0.02	1
UNMAPPED	1	HEM	HAC	2.17	0.02	1
UNMAPPED	1	HEM	HMD1	9.77	0.02	2
UNMAPPED	1	HEM	HBA1	1.51	0.02	1
UNMAPPED	1	HEM	HMC1	32.44	0.02	2
UNMAPPED	1	HEM	HHB	-2.75	0.02	1
UNMAPPED	1	HEM	HMB1	7.2	0.02	2
UNMAPPED	1	HEM	HAA1	11.61	0.02	1

7.2.2 Chemical shift referencing

No chemical shift referencing corrections were calculated (not enough data).

7.2.3 Completeness of resonance assignments [i](#)

The following table shows the completeness of the chemical shift assignments for the well-defined regions of the structure. The overall completeness is 0%, i.e. 0 atoms were assigned a chemical shift out of a possible 1307. 0 out of 9 assigned methyl groups (LEU and VAL) were assigned stereospecifically.

	Total	¹ H	¹³ C	¹⁵ N
Backbone	0/512 (0%)	0/204 (0%)	0/208 (0%)	0/100 (0%)
Sidechain	0/695 (0%)	0/411 (0%)	0/251 (0%)	0/33 (0%)
Aromatic	0/100 (0%)	0/54 (0%)	0/43 (0%)	0/3 (0%)
Overall	0/1307 (0%)	0/669 (0%)	0/502 (0%)	0/136 (0%)

The following table shows the completeness of the chemical shift assignments for the full structure. The overall completeness is 0%, i.e. 0 atoms were assigned a chemical shift out of a possible 1307. 0 out of 9 assigned methyl groups (LEU and VAL) were assigned stereospecifically.

	Total	¹ H	¹³ C	¹⁵ N
Backbone	0/512 (0%)	0/204 (0%)	0/208 (0%)	0/100 (0%)
Sidechain	0/695 (0%)	0/411 (0%)	0/251 (0%)	0/33 (0%)
Aromatic	0/100 (0%)	0/54 (0%)	0/43 (0%)	0/3 (0%)
Overall	0/1307 (0%)	0/669 (0%)	0/502 (0%)	0/136 (0%)

7.2.4 Statistically unusual chemical shifts [i](#)

There are no statistically unusual chemical shifts.

7.2.5 Random Coil Index (RCI) plots [i](#)

No *random coil index* (RCI) plot could be generated from the current chemical shift list (assigned_chem_shift_list_2). RCI is only applicable to proteins.

7.3 Chemical shift list 3

File name: BMRB entry 5660

Chemical shift list name: *assigned_chem_shift_list_3*

7.3.1 Bookkeeping [i](#)

The following table shows the results of parsing the chemical shift list and reports the number of nuclei with statistically unusual chemical shifts.

Total number of shifts	9
Number of shifts mapped to atoms	0
Number of unparsed shifts	0
Number of shifts with mapping errors	9
Number of shifts with mapping warnings	0
Number of shift outliers (ShiftChecker)	0

The following assigned chemical shifts were not mapped to the molecules present in the coordinate file.

- Chain not found in structure. All 9 occurrences are reported below.

Chain	Res	Type	Atom	Shift Data		
				Value	Uncertainty	Ambiguity
UNMAPPED	1	HEM	HMA1	22.87	0.02	2
UNMAPPED	1	HEM	HAA2	-1.02	0.02	1
UNMAPPED	1	HEM	HHB	-6.06	0.02	1
UNMAPPED	1	HEM	HBA2	0.98	0.02	1
UNMAPPED	1	HEM	HMD1	21.11	0.02	2
UNMAPPED	1	HEM	HBA1	2.0	0.02	1
UNMAPPED	1	HEM	HMC1	11.45	0.02	2
UNMAPPED	1	HEM	HMB1	12.93	0.02	2
UNMAPPED	1	HEM	HAA1	0.0	0.02	1

7.3.2 Chemical shift referencing [i](#)

No chemical shift referencing corrections were calculated (not enough data).

7.3.3 Completeness of resonance assignments [i](#)

The following table shows the completeness of the chemical shift assignments for the well-defined regions of the structure. The overall completeness is 0%, i.e. 0 atoms were assigned a chemical shift out of a possible 1307. 0 out of 9 assigned methyl groups (LEU and VAL) were assigned stereospecifically.

	Total	¹ H	¹³ C	¹⁵ N
Backbone	0/512 (0%)	0/204 (0%)	0/208 (0%)	0/100 (0%)
Sidechain	0/695 (0%)	0/411 (0%)	0/251 (0%)	0/33 (0%)
Aromatic	0/100 (0%)	0/54 (0%)	0/43 (0%)	0/3 (0%)
Overall	0/1307 (0%)	0/669 (0%)	0/502 (0%)	0/136 (0%)

The following table shows the completeness of the chemical shift assignments for the full structure. The overall completeness is 0%, i.e. 0 atoms were assigned a chemical shift out of a possible 1307.

0 out of 9 assigned methyl groups (LEU and VAL) were assigned stereospecifically.

	Total	¹H	¹³C	¹⁵N
Backbone	0/512 (0%)	0/204 (0%)	0/208 (0%)	0/100 (0%)
Sidechain	0/695 (0%)	0/411 (0%)	0/251 (0%)	0/33 (0%)
Aromatic	0/100 (0%)	0/54 (0%)	0/43 (0%)	0/3 (0%)
Overall	0/1307 (0%)	0/669 (0%)	0/502 (0%)	0/136 (0%)

7.3.4 Statistically unusual chemical shifts [i](#)

There are no statistically unusual chemical shifts.

7.3.5 Random Coil Index (RCI) plots [i](#)

No *random coil index* (RCI) plot could be generated from the current chemical shift list (assigned_chem_shift_list_3). RCI is only applicable to proteins.

7.4 Chemical shift list 4

File name: BMRB entry 5660

Chemical shift list name: *assigned_chem_shift_list_4*

7.4.1 Bookkeeping [i](#)

The following table shows the results of parsing the chemical shift list and reports the number of nuclei with statistically unusual chemical shifts.

Total number of shifts	6
Number of shifts mapped to atoms	0
Number of unparsed shifts	0
Number of shifts with mapping errors	6
Number of shifts with mapping warnings	0
Number of shift outliers (ShiftChecker)	0

The following assigned chemical shifts were not mapped to the molecules present in the coordinate file.

- Chain not found in structure. All 6 occurrences are reported below.

Chain	Res	Type	Atom	Shift Data		
				Value	Uncertainty	Ambiguity
UNMAPPED	1	HEM	HMA1	21.56	0.02	2

Continued on next page...

Continued from previous page...

Chain	Res	Type	Atom	Shift Data		
				Value	Uncertainty	Ambiguity
UNMAPPED	1	HEM	HAA2	-0.81	0.02	1
UNMAPPED	1	HEM	HHB	-5.68	0.02	1
UNMAPPED	1	HEM	HMD1	21.11	0.02	2
UNMAPPED	1	HEM	HMC1	11.81	0.02	2
UNMAPPED	1	HEM	HMB1	13.64	0.02	2

7.4.2 Chemical shift referencing ⓘ

No chemical shift referencing corrections were calculated (not enough data).

7.4.3 Completeness of resonance assignments ⓘ

The following table shows the completeness of the chemical shift assignments for the well-defined regions of the structure. The overall completeness is 0%, i.e. 0 atoms were assigned a chemical shift out of a possible 1307. 0 out of 9 assigned methyl groups (LEU and VAL) were assigned stereospecifically.

	Total	¹ H	¹³ C	¹⁵ N
Backbone	0/512 (0%)	0/204 (0%)	0/208 (0%)	0/100 (0%)
Sidechain	0/695 (0%)	0/411 (0%)	0/251 (0%)	0/33 (0%)
Aromatic	0/100 (0%)	0/54 (0%)	0/43 (0%)	0/3 (0%)
Overall	0/1307 (0%)	0/669 (0%)	0/502 (0%)	0/136 (0%)

The following table shows the completeness of the chemical shift assignments for the full structure. The overall completeness is 0%, i.e. 0 atoms were assigned a chemical shift out of a possible 1307. 0 out of 9 assigned methyl groups (LEU and VAL) were assigned stereospecifically.

	Total	¹ H	¹³ C	¹⁵ N
Backbone	0/512 (0%)	0/204 (0%)	0/208 (0%)	0/100 (0%)
Sidechain	0/695 (0%)	0/411 (0%)	0/251 (0%)	0/33 (0%)
Aromatic	0/100 (0%)	0/54 (0%)	0/43 (0%)	0/3 (0%)
Overall	0/1307 (0%)	0/669 (0%)	0/502 (0%)	0/136 (0%)

7.4.4 Statistically unusual chemical shifts ⓘ

There are no statistically unusual chemical shifts.

7.4.5 Random Coil Index (RCI) plots [i](#)

No *random coil index* (RCI) plot could be generated from the current chemical shift list (assigned_chem_shift_list_4). RCI is only applicable to proteins.

7.5 Chemical shift list 5

File name: BMRB entry 5660

Chemical shift list name: *assigned_chem_shift_list_5*

7.5.1 Bookkeeping [i](#)

The following table shows the results of parsing the chemical shift list and reports the number of nuclei with statistically unusual chemical shifts.

Total number of shifts	3
Number of shifts mapped to atoms	0
Number of unparsed shifts	0
Number of shifts with mapping errors	3
Number of shifts with mapping warnings	0
Number of shift outliers (ShiftChecker)	0

The following assigned chemical shifts were not mapped to the molecules present in the coordinate file.

- Chain not found in structure. All 3 occurrences are reported below.

Chain	Res	Type	Atom	Shift Data		
				Value	Uncertainty	Ambiguity
UNMAPPED	1	HEM	HMA1	24.5	0.02	2
UNMAPPED	1	HEM	HMD1	19.34	0.02	2
UNMAPPED	1	HEM	HMC1	12.1	0.02	2

7.5.2 Chemical shift referencing [i](#)

No chemical shift referencing corrections were calculated (not enough data).

7.5.3 Completeness of resonance assignments [i](#)

The following table shows the completeness of the chemical shift assignments for the well-defined regions of the structure. The overall completeness is 0%, i.e. 0 atoms were assigned a chemical shift out of a possible 1307. 0 out of 9 assigned methyl groups (LEU and VAL) were assigned stereospecifically.

	Total	¹H	¹³C	¹⁵N
Backbone	0/512 (0%)	0/204 (0%)	0/208 (0%)	0/100 (0%)
Sidechain	0/695 (0%)	0/411 (0%)	0/251 (0%)	0/33 (0%)
Aromatic	0/100 (0%)	0/54 (0%)	0/43 (0%)	0/3 (0%)
Overall	0/1307 (0%)	0/669 (0%)	0/502 (0%)	0/136 (0%)

The following table shows the completeness of the chemical shift assignments for the full structure. The overall completeness is 0%, i.e. 0 atoms were assigned a chemical shift out of a possible 1307. 0 out of 9 assigned methyl groups (LEU and VAL) were assigned stereospecifically.

	Total	¹H	¹³C	¹⁵N
Backbone	0/512 (0%)	0/204 (0%)	0/208 (0%)	0/100 (0%)
Sidechain	0/695 (0%)	0/411 (0%)	0/251 (0%)	0/33 (0%)
Aromatic	0/100 (0%)	0/54 (0%)	0/43 (0%)	0/3 (0%)
Overall	0/1307 (0%)	0/669 (0%)	0/502 (0%)	0/136 (0%)

7.5.4 Statistically unusual chemical shifts [i](#)

There are no statistically unusual chemical shifts.

7.5.5 Random Coil Index (RCI) plots [i](#)

No *random coil index* (RCI) plot could be generated from the current chemical shift list (assigned_chem_shift_list_5). RCI is only applicable to proteins.