



# Full wwPDB X-ray Structure Validation Report ⓘ

Jan 31, 2016 – 06:24 PM GMT

PDB ID : 1AMN  
Title : TRANSITION STATE ANALOG: ACETYLCHOLINESTERASE COM-  
PLEXED WITH M-(N,N,N-TRIMETHYLAMMONIO)TRIFLUOROAC  
ETOPHENONE  
Authors : Harel, M.; Silman, I.; Sussman, J.L.  
Deposited on : 1996-02-13  
Resolution : 2.80 Å(reported)

This is a Full wwPDB X-ray Structure Validation Report for a publicly released PDB entry.  
We welcome your comments at [validation@mail.wwpdb.org](mailto:validation@mail.wwpdb.org)  
A user guide is available at  
<http://wwpdb.org/validation/2016/XrayValidationReportHelp>  
with specific help available everywhere you see the ⓘ symbol.

---

The following versions of software and data (see [references ⓘ](#)) were used in the production of this report:

MolProbity : 4.02b-467  
Mogul : 1.7 (RC4), CSD as536be (2015)  
Xtriage (Phenix) : 1.9-1692  
EDS : rb-20026688  
Percentile statistics : 20151230.v01 (using entries in the PDB archive December 30th 2015)  
Refmac : 5.8.0135  
CCP4 : 6.5.0  
Ideal geometry (proteins) : Engh & Huber (2001)  
Ideal geometry (DNA, RNA) : Parkinson et al. (1996)  
Validation Pipeline (wwPDB-VP) : trunk26865

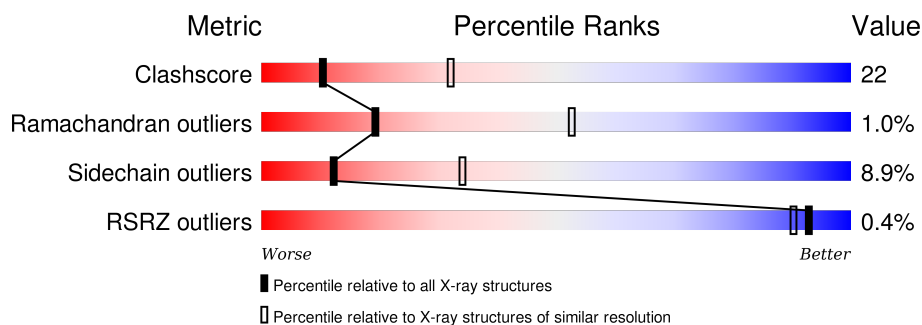
# 1 Overall quality at a glance

The following experimental techniques were used to determine the structure:

*X-RAY DIFFRACTION*

The reported resolution of this entry is 2.80 Å.

Percentile scores (ranging between 0-100) for global validation metrics of the entry are shown in the following graphic. The table shows the number of entries on which the scores are based.



Metric	Whole archive (#Entries)	Similar resolution (#Entries, resolution range(Å))
Clashscore	102246	2827 (2.80-2.80)
Ramachandran outliers	100387	2782 (2.80-2.80)
Sidechain outliers	100360	2784 (2.80-2.80)
RSRZ outliers	91569	2404 (2.80-2.80)

The table below summarises the geometric issues observed across the polymeric chains and their fit to the electron density. The red, orange, yellow and green segments on the lower bar indicate the fraction of residues that contain outliers for  $\geq 3$ , 2, 1 and 0 types of geometric quality criteria. A grey segment represents the fraction of residues that are not modelled. The numeric value for each fraction is indicated below the corresponding segment, with a dot representing fractions  $\leq 5\%$ . The upper red bar (where present) indicates the fraction of residues that have poor fit to the electron density. The numeric value is given above the bar.

Mol	Chain	Length	Quality of chain
1	A	537	

The following table lists non-polymeric compounds, carbohydrate monomers and non-standard residues in protein, DNA, RNA chains that are outliers for geometric or electron-density-fit criteria:

Mol	Type	Chain	Res	Chirality	Geometry	Clashes	Electron density
2	SO4	A	593	-	X	-	X

## 2 Entry composition [i](#)

There are 4 unique types of molecules in this entry. The entry contains 5348 atoms, of which 1078 are hydrogens and 0 are deuteriums.

In the tables below, the ZeroOcc column contains the number of atoms modelled with zero occupancy, the AltConf column contains the number of residues with at least one atom in alternate conformation and the Trace column contains the number of residues modelled with at most 2 atoms.

- Molecule 1 is a protein called ACETYLCHOLINESTERASE.

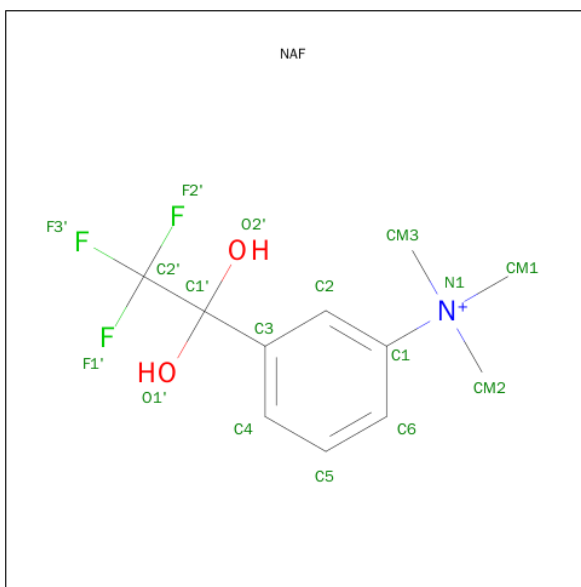
Mol	Chain	Residues	Atoms						ZeroOcc	AltConf	Trace
			Total	C	H	N	O	S			
1	A	526	5029	2680	880	700	747	22	0	0	0

- Molecule 2 is SULFATE ION (three-letter code: SO4) (formula: O<sub>4</sub>S).



Mol	Chain	Residues	Atoms			ZeroOcc	AltConf
			Total	O	S		
2	A	1	5	4	1	0	0

- Molecule 3 is M-(N,N,N-TRIMETHYLAMMONIO)-2,2,2-TRIFLUORO-1,1-DIHYDROXY ETHYLBENZENE (three-letter code: NAF) (formula: C<sub>11</sub>H<sub>15</sub>F<sub>3</sub>NO<sub>2</sub>).



Mol	Chain	Residues	Atoms					ZeroOcc	AltConf
3	A	1	Total	C	F	N	O	0	0
			17	11	3	1	2		

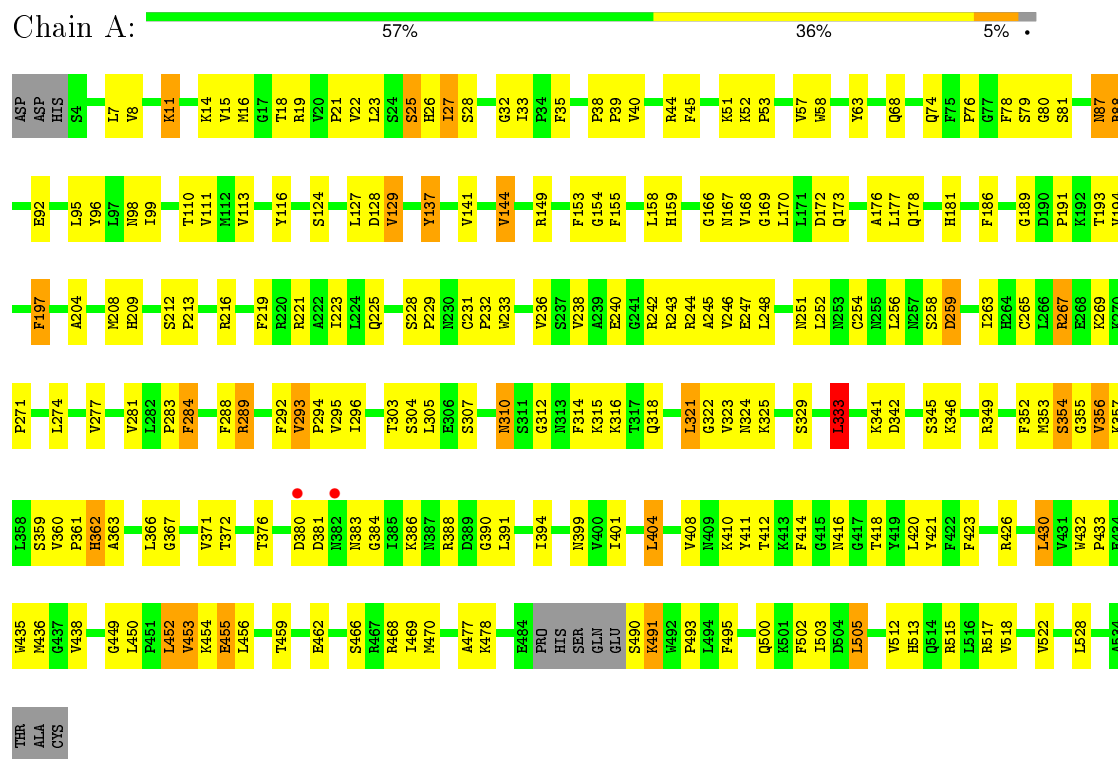
- Molecule 4 is water.

Mol	Chain	Residues	Atoms			ZeroOcc	AltConf
4	A	99	Total	H	O	0	0
			297	198	99		

### 3 Residue-property plots

These plots are drawn for all protein, RNA and DNA chains in the entry. The first graphic for a chain summarises the proportions of errors displayed in the second graphic. The second graphic shows the sequence view annotated by issues in geometry and electron density. Residues are color-coded according to the number of geometric quality criteria for which they contain at least one outlier: green = 0, yellow = 1, orange = 2 and red = 3 or more. A red dot above a residue indicates a poor fit to the electron density ( $\text{RSRZ} > 2$ ). Stretches of 2 or more consecutive residues without any outlier are shown as a green connector. Residues present in the sample, but not in the model, are shown in grey.

#### • Molecule 1: ACETYLCHOLINESTERASE



## 4 Data and refinement statistics

Property	Value	Source
Space group	P 31 2 1	Depositor
Cell constants a, b, c, $\alpha$ , $\beta$ , $\gamma$	113.54Å 113.54Å 137.53Å 90.00° 90.00° 120.00°	Depositor
Resolution (Å)	8.00 – 2.80 29.41 – 2.80	Depositor EDS
% Data completeness (in resolution range)	(Not available) (8.00-2.80) 98.2 (29.41-2.80)	Depositor EDS
$R_{merge}$	0.12	Depositor
$R_{sym}$	(Not available)	Depositor
$\langle I/\sigma(I) \rangle$ <sup>1</sup>	1.25 (at 2.80Å)	Xtriage
Refinement program	X-PLOR	Depositor
R, $R_{free}$	0.188 , 0.235 0.182 , (Not available)	Depositor DCC
$R_{free}$ test set	No test flags present.	DCC
Wilson B-factor (Å <sup>2</sup> )	37.0	Xtriage
Anisotropy	0.420	Xtriage
Bulk solvent $k_{sol}$ (e/Å <sup>3</sup> ), $B_{sol}$ (Å <sup>2</sup> )	0.34 , 100.4	EDS
Estimated twinning fraction	0.039 for -h,-k,l	Xtriage
L-test for twinning <sup>2</sup>	$\langle  L  \rangle = 0.47$ , $\langle L^2 \rangle = 0.30$	Xtriage
Outliers	0 of 25272 reflections	Xtriage
$F_o, F_c$ correlation	0.92	EDS
Total number of atoms	5348	wwPDB-VP
Average B, all atoms (Å <sup>2</sup> )	20.0	wwPDB-VP

Xtriage's analysis on translational NCS is as follows: *The largest off-origin peak in the Patterson function is 3.71% of the height of the origin peak. No significant pseudotranslation is detected.*

<sup>1</sup>Intensities estimated from amplitudes.

<sup>2</sup>Theoretical values of  $\langle |L| \rangle$ ,  $\langle L^2 \rangle$  for acentric reflections are 0.5, 0.375 respectively for untwinned datasets, and 0.333, 0.2 for perfectly twinned datasets.

## 5 Model quality [i](#)

### 5.1 Standard geometry [i](#)

Bond lengths and bond angles in the following residue types are not validated in this section: NAF, SO4

The Z score for a bond length (or angle) is the number of standard deviations the observed value is removed from the expected value. A bond length (or angle) with  $|Z| > 5$  is considered an outlier worth inspection. RMSZ is the root-mean-square of all Z scores of the bond lengths (or angles).

Mol	Chain	Bond lengths		Bond angles	
		RMSZ	$\# Z  > 5$	RMSZ	$\# Z  > 5$
1	A	0.55	0/4269	0.79	1/5795 (0.0%)

There are no bond length outliers.

All (1) bond angle outliers are listed below:

Mol	Chain	Res	Type	Atoms	Z	Observed( $^{\circ}$ )	Ideal( $^{\circ}$ )
1	A	333	LEU	CA-CB-CG	5.82	128.68	115.30

There are no chirality outliers.

There are no planarity outliers.

### 5.2 Too-close contacts [i](#)

In the following table, the Non-H and H(model) columns list the number of non-hydrogen atoms and hydrogen atoms in the chain respectively. The H(added) column lists the number of hydrogen atoms added and optimized by MolProbity. The Clashes column lists the number of clashes within the asymmetric unit, whereas Symm-Clashes lists symmetry related clashes.

Mol	Chain	Non-H	H(model)	H(added)	Clashes	Symm-Clashes
1	A	4149	880	4000	175	0
2	A	5	0	0	0	0
3	A	17	0	13	1	0
4	A	99	198	0	3	0
All	All	4270	1078	4013	176	0

The all-atom clashscore is defined as the number of clashes found per 1000 atoms (including hydrogen atoms). The all-atom clashscore for this structure is 22.

All (176) close contacts within the same asymmetric unit are listed below, sorted by their clash

magnitude.

Atom-1	Atom-2	Interatomic distance (Å)	Clash overlap (Å)
1:A:158:LEU:HD12	1:A:263:ILE:HD11	1.53	0.91
1:A:110:THR:HG23	1:A:193:THR:HG22	1.53	0.88
1:A:383:ASN:HB3	1:A:386:LYS:HB2	1.58	0.85
1:A:68:GLN:HG2	1:A:271:PRO:HB3	1.59	0.84
1:A:303:THR:HG22	1:A:304:SER:H	1.45	0.81
1:A:322:GLY:HA3	1:A:421:TYR:CE2	2.17	0.79
1:A:252:LEU:HD23	1:A:269:LYS:HG3	1.63	0.78
1:A:453:VAL:HG22	1:A:456:LEU:HG	1.65	0.78
1:A:322:GLY:HA3	1:A:421:TYR:CZ	2.19	0.77
1:A:11:LYS:HD2	1:A:186:PHE:HE2	1.49	0.76
1:A:204:ALA:O	1:A:208:MET:HG3	1.86	0.75
1:A:113:VAL:HA	1:A:144:VAL:HG13	1.66	0.74
1:A:324:ASN:HD22	1:A:423:PHE:HB3	1.53	0.73
1:A:345:SER:O	1:A:388:ARG:HG3	1.88	0.73
1:A:354:SER:HA	1:A:357:LYS:HE2	1.69	0.73
1:A:158:LEU:HD12	1:A:263:ILE:CD1	2.21	0.70
1:A:316:LYS:HG2	1:A:414:PHE:O	1.93	0.69
1:A:259:ASP:O	1:A:263:ILE:HG12	1.93	0.68
1:A:246:VAL:HB	1:A:256:LEU:HD23	1.75	0.68
1:A:15:VAL:HG12	1:A:58:TRP:HB3	1.74	0.67
1:A:303:THR:HG22	1:A:304:SER:N	2.08	0.67
1:A:490:SER:O	1:A:491:LYS:HB2	1.94	0.67
1:A:359:SER:O	1:A:361:PRO:HD3	1.94	0.67
1:A:213:PRO:HA	1:A:216:ARG:HE	1.60	0.66
1:A:110:THR:OG1	1:A:478:LYS:HG2	1.94	0.66
1:A:324:ASN:ND2	1:A:423:PHE:HB3	2.11	0.66
1:A:236:VAL:HG13	1:A:293:VAL:HG12	1.78	0.66
1:A:418:THR:OG1	1:A:495:PHE:HB3	1.97	0.65
1:A:355:GLY:HA3	1:A:391:LEU:HD21	1.77	0.64
1:A:149:ARG:NH2	1:A:168:VAL:HG13	2.12	0.64
1:A:380:ASP:OD1	1:A:383:ASN:HB2	1.97	0.64
1:A:495:PHE:CZ	1:A:500:GLN:HG2	2.33	0.64
1:A:11:LYS:HD2	1:A:186:PHE:CE2	2.34	0.62
1:A:39:PRO:HD3	1:A:95:LEU:HD12	1.82	0.62
1:A:45:PHE:O	1:A:168:VAL:HG21	2.01	0.61
1:A:111:VAL:HB	1:A:194:VAL:HG22	1.83	0.61
1:A:453:VAL:CG2	1:A:456:LEU:HG	2.32	0.60
1:A:321:LEU:HD11	1:A:408:VAL:HG22	1.85	0.59
1:A:16:MET:HB2	1:A:57:VAL:HG11	1.83	0.59
1:A:155:PHE:CE2	1:A:294:PRO:HG3	2.38	0.59
1:A:219:PHE:O	1:A:315:LYS:HE2	2.03	0.58

*Continued on next page...*



*Continued from previous page...*

Atom-1	Atom-2	Interatomic distance (Å)	Clash overlap (Å)
1:A:450:LEU:HD12	1:A:456:LEU:HD11	1.85	0.58
1:A:372:THR:O	1:A:376:THR:HG23	2.04	0.58
1:A:359:SER:C	1:A:361:PRO:HD3	2.24	0.58
1:A:459:THR:OG1	1:A:462:GLU:HG3	2.04	0.58
1:A:216:ARG:HG2	1:A:315:LYS:HB2	1.85	0.57
1:A:352:PHE:O	1:A:356:VAL:HG13	2.05	0.57
1:A:453:VAL:HG23	1:A:455:GLU:HG2	1.87	0.57
1:A:310:ASN:ND2	1:A:410:LYS:HE3	2.20	0.57
1:A:242:ARG:O	1:A:245:ALA:HB3	2.05	0.57
1:A:149:ARG:NH2	1:A:168:VAL:CG1	2.68	0.56
1:A:233:TRP:O	1:A:293:VAL:HG21	2.05	0.56
1:A:236:VAL:HG13	1:A:293:VAL:CG1	2.35	0.56
1:A:155:PHE:HE2	1:A:294:PRO:HG3	1.69	0.56
1:A:166:GLY:O	1:A:168:VAL:N	2.39	0.55
1:A:401:ILE:HG21	1:A:517:ARG:HG3	1.88	0.55
1:A:426:ARG:NE	4:A:633:HOH:O	2.38	0.55
1:A:197:PHE:CB	1:A:223:ILE:HB	2.36	0.55
1:A:44:ARG:HD3	1:A:92:GLU:OE2	2.06	0.55
1:A:360:VAL:CG1	1:A:363:ALA:HB2	2.36	0.55
1:A:353:MET:O	1:A:357:LYS:HG3	2.08	0.55
1:A:23:LEU:HD11	1:A:452:LEU:HD23	1.88	0.54
1:A:303:THR:CG2	1:A:304:SER:H	2.20	0.53
1:A:189:GLY:O	1:A:191:PRO:HD3	2.07	0.53
1:A:349:ARG:HD2	1:A:381:ASP:O	2.08	0.53
1:A:390:GLY:O	1:A:394:ILE:HG13	2.09	0.53
1:A:87:ASN:C	1:A:87:ASN:HD22	2.12	0.53
1:A:360:VAL:HG12	1:A:363:ALA:HB2	1.91	0.53
1:A:173:GLN:OE1	1:A:209:HIS:HE1	1.92	0.53
1:A:169:GLY:HA2	1:A:172:ASP:OD2	2.09	0.52
1:A:333:LEU:HD22	1:A:333:LEU:O	2.09	0.52
1:A:213:PRO:HA	1:A:216:ARG:NE	2.23	0.52
1:A:318:GLN:HG3	1:A:416:ASN:O	2.09	0.52
1:A:197:PHE:HB3	1:A:223:ILE:HB	1.91	0.52
1:A:372:THR:HG23	1:A:376:THR:HG21	1.91	0.51
1:A:312:GLY:HA2	1:A:314:PHE:CE2	2.45	0.51
1:A:110:THR:HG23	1:A:193:THR:CG2	2.34	0.51
1:A:503:ILE:HG22	1:A:512:VAL:HA	1.93	0.51
1:A:35:PHE:CZ	1:A:176:ALA:HB2	2.46	0.51
1:A:265:CYS:SG	1:A:269:LYS:HE2	2.49	0.51
1:A:254:CYS:O	1:A:256:LEU:HD12	2.11	0.51
1:A:503:ILE:HG22	1:A:512:VAL:HG22	1.92	0.51

*Continued on next page...*

*Continued from previous page...*

Atom-1	Atom-2	Interatomic distance (Å)	Clash overlap (Å)
1:A:246:VAL:O	1:A:256:LEU:HD21	2.11	0.50
1:A:515:ARG:HB3	1:A:518:VAL:HB	1.93	0.50
1:A:33:ILE:HD12	1:A:99:ILE:HD12	1.94	0.50
1:A:433:PRO:HB2	1:A:435:TRP:CD1	2.47	0.50
1:A:8:VAL:O	1:A:14:LYS:HA	2.12	0.50
1:A:349:ARG:HH12	1:A:376:THR:HG21	1.77	0.49
1:A:325:LYS:HB3	1:A:438:VAL:HB	1.95	0.49
1:A:289:ARG:NH2	1:A:399:ASN:OD1	2.44	0.49
1:A:367:GLY:O	1:A:371:VAL:HG23	2.11	0.49
1:A:149:ARG:HH22	1:A:168:VAL:HG13	1.78	0.49
1:A:240:GLU:OE2	1:A:243:ARG:HD3	2.13	0.49
1:A:252:LEU:HB3	1:A:269:LYS:HE3	1.95	0.49
1:A:243:ARG:HG3	1:A:244:ARG:N	2.27	0.49
1:A:21:PRO:HG3	1:A:26:HIS:NE2	2.28	0.48
1:A:466:SER:O	1:A:470:MET:HG3	2.13	0.48
1:A:213:PRO:HG2	4:A:610:HOH:O	2.13	0.48
1:A:349:ARG:HD3	1:A:381:ASP:OD2	2.14	0.48
1:A:502:PHE:CZ	1:A:513:HIS:HB2	2.48	0.48
1:A:74:GLN:O	1:A:76:PRO:HD3	2.12	0.48
1:A:450:LEU:HD12	1:A:456:LEU:CD1	2.43	0.48
1:A:314:PHE:CE1	1:A:411:TYR:CD2	3.01	0.48
1:A:149:ARG:O	1:A:154:GLY:HA3	2.15	0.47
1:A:159:HIS:HB2	1:A:238:VAL:HG13	1.95	0.47
1:A:491:LYS:O	1:A:493:PRO:HD3	2.14	0.47
3:A:594:NAF:H4	3:A:594:NAF:F1'	2.03	0.47
1:A:228:SER:OG	1:A:404:LEU:HA	2.15	0.47
1:A:247:GLU:HB3	1:A:281:VAL:HG12	1.96	0.47
1:A:450:LEU:O	1:A:453:VAL:HG13	2.14	0.47
1:A:40:VAL:HG12	1:A:92:GLU:HB2	1.97	0.47
1:A:208:MET:HG2	1:A:229:PRO:HB3	1.97	0.47
1:A:243:ARG:O	1:A:246:VAL:HG22	2.15	0.46
1:A:346:LYS:HB3	1:A:384:GLY:HA3	1.97	0.46
1:A:32:GLY:O	1:A:96:TYR:HD2	1.98	0.46
1:A:63:TYR:HB3	1:A:88:ARG:HD3	1.98	0.46
1:A:324:ASN:ND2	1:A:423:PHE:HD2	2.12	0.46
1:A:366:LEU:HA	1:A:366:LEU:HD12	1.70	0.46
1:A:310:ASN:HD21	1:A:410:LYS:HE3	1.81	0.45
1:A:454:LYS:O	1:A:456:LEU:N	2.49	0.45
1:A:433:PRO:HG2	1:A:436:MET:SD	2.57	0.45
1:A:263:ILE:O	1:A:267:ARG:HB2	2.17	0.44
1:A:454:LYS:C	1:A:456:LEU:H	2.21	0.44

*Continued on next page...*

*Continued from previous page...*

Atom-1	Atom-2	Interatomic distance (Å)	Clash overlap (Å)
1:A:469:ILE:HD11	1:A:505:LEU:HD12	1.99	0.44
1:A:251:ASN:HB3	1:A:277:VAL:HG21	1.99	0.44
1:A:420:LEU:HD23	1:A:502:PHE:HB3	2.00	0.43
1:A:178:GLN:O	1:A:181:HIS:HB3	2.17	0.43
1:A:79:SER:O	1:A:80:GLY:C	2.55	0.43
1:A:362:HIS:CD2	1:A:362:HIS:N	2.86	0.43
1:A:284:PHE:CD1	1:A:284:PHE:N	2.83	0.43
1:A:246:VAL:HB	1:A:256:LEU:CD2	2.46	0.43
1:A:391:LEU:HA	1:A:391:LEU:HD12	1.77	0.43
1:A:44:ARG:HD2	1:A:153:PHE:HD1	1.83	0.43
1:A:197:PHE:H	1:A:197:PHE:HD1	1.66	0.43
1:A:33:ILE:CD1	1:A:99:ILE:HD12	2.48	0.43
1:A:450:LEU:HD13	1:A:450:LEU:HA	1.73	0.43
1:A:25:SER:O	1:A:26:HIS:ND1	2.52	0.43
1:A:503:ILE:CG2	1:A:512:VAL:HG22	2.48	0.43
1:A:296:ILE:CD1	1:A:305:LEU:HD13	2.49	0.42
1:A:372:THR:HG23	1:A:376:THR:CG2	2.48	0.42
1:A:362:HIS:CD2	4:A:613:HOH:O	2.72	0.42
1:A:423:PHE:HD1	1:A:505:LEU:HB3	1.84	0.42
1:A:7:LEU:C	1:A:7:LEU:HD13	2.39	0.42
1:A:159:HIS:CB	1:A:238:VAL:HG13	2.49	0.42
1:A:221:ARG:HD2	1:A:477:ALA:O	2.20	0.42
1:A:137:TYR:CD1	1:A:137:TYR:C	2.93	0.42
1:A:212:SER:HA	1:A:213:PRO:HD2	1.90	0.42
1:A:426:ARG:CG	1:A:430:LEU:HD12	2.50	0.42
1:A:231:CYS:HA	1:A:232:PRO:HD3	1.82	0.42
1:A:383:ASN:CB	1:A:386:LYS:HB2	2.41	0.42
1:A:321:LEU:H	1:A:321:LEU:HD23	1.85	0.42
1:A:51:LYS:HA	1:A:51:LYS:HD2	1.82	0.42
1:A:491:LYS:HA	1:A:491:LYS:HD3	1.75	0.41
1:A:78:PHE:HE2	1:A:432:TRP:CH2	2.38	0.41
1:A:52:LYS:HA	1:A:53:PRO:HD3	1.85	0.41
1:A:88:ARG:HH11	1:A:88:ARG:CG	2.33	0.41
1:A:251:ASN:C	1:A:252:LEU:HD12	2.40	0.41
1:A:455:GLU:CD	1:A:455:GLU:H	2.24	0.41
1:A:38:PRO:HA	1:A:39:PRO:HD2	1.88	0.41
1:A:216:ARG:NH1	1:A:314:PHE:HA	2.36	0.41
1:A:124:SER:HB2	1:A:127:LEU:HD23	2.02	0.41
1:A:74:GLN:C	1:A:76:PRO:HD3	2.42	0.41
1:A:127:LEU:O	1:A:129:VAL:N	2.54	0.41
1:A:341:LYS:HE2	1:A:342:ASP:OD1	2.21	0.41

*Continued on next page...*

Continued from previous page...

Atom-1	Atom-2	Interatomic distance (Å)	Clash overlap (Å)
1:A:27:ILE:HG23	1:A:28:SER:N	2.36	0.41
1:A:44:ARG:O	1:A:45:PHE:HB2	2.21	0.40
1:A:22:VAL:O	1:A:22:VAL:HG13	2.21	0.40
1:A:22:VAL:HG22	1:A:23:LEU:HG	2.04	0.40
1:A:236:VAL:CG2	1:A:295:VAL:HG12	2.52	0.40
1:A:449:GLY:O	1:A:452:LEU:HB2	2.22	0.40
1:A:170:LEU:HD12	1:A:170:LEU:HA	1.89	0.40
1:A:116:TYR:CD1	1:A:116:TYR:C	2.95	0.40
1:A:248:LEU:HD22	1:A:292:PHE:CZ	2.57	0.40
1:A:18:THR:HG22	1:A:19:ARG:N	2.36	0.40
1:A:98:ASN:O	1:A:144:VAL:HA	2.20	0.40
1:A:35:PHE:C	1:A:35:PHE:CD1	2.95	0.40

There are no symmetry-related clashes.

## 5.3 Torsion angles ⓘ

### 5.3.1 Protein backbone ⓘ

In the following table, the Percentiles column shows the percent Ramachandran outliers of the chain as a percentile score with respect to all X-ray entries followed by that with respect to entries of similar resolution.

The Analysed column shows the number of residues for which the backbone conformation was analysed, and the total number of residues.

Mol	Chain	Analysed	Favoured	Allowed	Outliers	Percentiles	
1	A	522/537 (97%)	473 (91%)	44 (8%)	5 (1%)	19	52

All (5) Ramachandran outliers are listed below:

Mol	Chain	Res	Type
1	A	128	ASP
1	A	167	ASN
1	A	491	LYS
1	A	329	SER
1	A	455	GLU

### 5.3.2 Protein sidechains ⓘ

In the following table, the Percentiles column shows the percent sidechain outliers of the chain as a percentile score with respect to all X-ray entries followed by that with respect to entries of similar resolution.

The Analysed column shows the number of residues for which the sidechain conformation was analysed, and the total number of residues.

Mol	Chain	Analysed	Rotameric	Outliers	Percentiles	
1	A	440/469 (94%)	401 (91%)	39 (9%)	12	34

All (39) residues with a non-rotameric sidechain are listed below:

Mol	Chain	Res	Type
1	A	11	LYS
1	A	25	SER
1	A	27	ILE
1	A	81	SER
1	A	87	ASN
1	A	88	ARG
1	A	129	VAL
1	A	137	TYR
1	A	141	VAL
1	A	144	VAL
1	A	177	LEU
1	A	197	PHE
1	A	225	GLN
1	A	258	SER
1	A	259	ASP
1	A	267	ARG
1	A	274	LEU
1	A	283	PRO
1	A	284	PHE
1	A	288	PHE
1	A	289	ARG
1	A	293	VAL
1	A	307	SER
1	A	310	ASN
1	A	321	LEU
1	A	323	VAL
1	A	333	LEU
1	A	354	SER
1	A	356	VAL
1	A	362	HIS

*Continued on next page...*

*Continued from previous page...*

Mol	Chain	Res	Type
1	A	404	LEU
1	A	412	THR
1	A	430	LEU
1	A	452	LEU
1	A	453	VAL
1	A	468	ARG
1	A	505	LEU
1	A	522	VAL
1	A	528	LEU

Some sidechains can be flipped to improve hydrogen bonding and reduce clashes. All (14) such sidechains are listed below:

Mol	Chain	Res	Type
1	A	65	ASN
1	A	66	ASN
1	A	87	ASN
1	A	209	HIS
1	A	225	GLN
1	A	255	ASN
1	A	272	GLN
1	A	310	ASN
1	A	324	ASN
1	A	416	ASN
1	A	471	HIS
1	A	483	ASN
1	A	525	ASN
1	A	526	GLN

### 5.3.3 RNA ⓘ

There are no RNA molecules in this entry.

## 5.4 Non-standard residues in protein, DNA, RNA chains ⓘ

There are no non-standard protein/DNA/RNA residues in this entry.

## 5.5 Carbohydrates ⓘ

There are no carbohydrates in this entry.

## 5.6 Ligand geometry

2 ligands are modelled in this entry.

In the following table, the Counts columns list the number of bonds (or angles) for which Mogul statistics could be retrieved, the number of bonds (or angles) that are observed in the model and the number of bonds (or angles) that are defined in the chemical component dictionary. The Link column lists molecule types, if any, to which the group is linked. The Z score for a bond length (or angle) is the number of standard deviations the observed value is removed from the expected value. A bond length (or angle) with  $|Z| > 2$  is considered an outlier worth inspection. RMSZ is the root-mean-square of all Z scores of the bond lengths (or angles).

Mol	Type	Chain	Res	Link	Bond lengths			Bond angles		
					Counts	RMSZ	# Z  > 2	Counts	RMSZ	# Z  > 2
2	SO4	A	593	-	4,4,4	2.83	4 (100%)	6,6,6	0.82	0
3	NAF	A	594	1	12,17,17	2.91	7 (58%)	18,28,28	2.26	7 (38%)

In the following table, the Chirals column lists the number of chiral outliers, the number of chiral centers analysed, the number of these observed in the model and the number defined in the chemical component dictionary. Similar counts are reported in the Torsion and Rings columns. '-' means no outliers of that kind were identified.

Mol	Type	Chain	Res	Link	Chirals	Torsions	Rings
2	SO4	A	593	-	-	0/0/0/0	0/0/0/0
3	NAF	A	594	1	-	0/11/21/21	0/1/1/1

All (11) bond length outliers are listed below:

Mol	Chain	Res	Type	Atoms	Z	Observed(Å)	Ideal(Å)
3	A	594	NAF	C1-N1	-4.58	1.39	1.50
3	A	594	NAF	C2-C1	2.14	1.43	1.39
2	A	593	SO4	O4-S	2.24	1.55	1.47
2	A	593	SO4	O3-S	2.61	1.56	1.47
2	A	593	SO4	O2-S	2.74	1.56	1.47
3	A	594	NAF	F3'-C2'	2.81	1.40	1.32
3	A	594	NAF	C4-C3	3.32	1.44	1.39
2	A	593	SO4	O1-S	3.56	1.59	1.47
3	A	594	NAF	F2'-C2'	3.95	1.43	1.32
3	A	594	NAF	F1'-C2'	3.99	1.43	1.32
3	A	594	NAF	C6-C1	4.69	1.49	1.39

All (7) bond angle outliers are listed below:

Mol	Chain	Res	Type	Atoms	Z	Observed(°)	Ideal(°)
3	A	594	NAF	CM3-N1-CM2	-5.30	91.05	108.11
3	A	594	NAF	CM1-N1-C1	-2.43	104.91	110.75
3	A	594	NAF	CM2-N1-C1	2.59	116.97	110.75
3	A	594	NAF	F2'-C2'-F1'	2.72	112.70	105.87
3	A	594	NAF	CM3-N1-CM1	3.29	118.70	108.11
3	A	594	NAF	C2'-C1'-C3	3.36	115.48	109.23
3	A	594	NAF	CM3-N1-C1	3.74	119.73	110.75

There are no chirality outliers.

There are no torsion outliers.

There are no ring outliers.

1 monomer is involved in 1 short contact:

Mol	Chain	Res	Type	Clashes	Symm-Clashes
3	A	594	NAF	1	0

## 5.7 Other polymers [i](#)

There are no such residues in this entry.

## 5.8 Polymer linkage issues [i](#)

There are no chain breaks in this entry.



## 6 Fit of model and data [i](#)

### 6.1 Protein, DNA and RNA chains [i](#)

In the following table, the column labelled ‘#RSRZ> 2’ contains the number (and percentage) of RSRZ outliers, followed by percent RSRZ outliers for the chain as percentile scores relative to all X-ray entries and entries of similar resolution. The OWAB column contains the minimum, median, 95<sup>th</sup> percentile and maximum values of the occupancy-weighted average B-factor per residue. The column labelled ‘Q< 0.9’ lists the number of (and percentage) of residues with an average occupancy less than 0.9.

Mol	Chain	Analysed	<RSRZ>	#RSRZ>2	OWAB(Å <sup>2</sup> )	Q<0.9
1	A	526/537 (97%)	-0.69	2 (0%) 93 90	3, 20, 44, 61	0

All (2) RSRZ outliers are listed below:

Mol	Chain	Res	Type	RSRZ
1	A	380	ASP	2.6
1	A	382	ASN	2.1

### 6.2 Non-standard residues in protein, DNA, RNA chains [i](#)

There are no non-standard protein/DNA/RNA residues in this entry.

### 6.3 Carbohydrates [i](#)

There are no carbohydrates in this entry.

### 6.4 Ligands [i](#)

In the following table, the Atoms column lists the number of modelled atoms in the group and the number defined in the chemical component dictionary. LLDF column lists the quality of electron density of the group with respect to its neighbouring residues in protein, DNA or RNA chains. The B-factors column lists the minimum, median, 95<sup>th</sup> percentile and maximum values of B factors of atoms in the group. The column labelled ‘Q< 0.9’ lists the number of atoms with occupancy less than 0.9.

Mol	Type	Chain	Res	Atoms	RSCC	RSR	LLDF	B-factors(Å <sup>2</sup> )	Q<0.9
2	SO4	A	593	5/5	0.96	0.19	3.09	72,73,77,77	0
3	NAF	A	594	17/17	0.96	0.16	0.55	4,12,16,17	0

## 6.5 Other polymers

There are no such residues in this entry.