



Full wwPDB X-ray Structure Validation Report ⓘ

Feb 1, 2016 – 12:28 AM GMT

PDB ID : 2AMD
Title : Crystal Structure Of SARS_CoV Mpro in Complex with an Inhibitor N9
Authors : Yang, H.; Xue, X.; Yang, K.; Zhao, Q.; Bartlam, M.; Rao, Z.
Deposited on : 2005-08-09
Resolution : 1.85 Å(reported)

This is a Full wwPDB X-ray Structure Validation Report for a publicly released PDB entry.
We welcome your comments at validation@mail.wwpdb.org
A user guide is available at
<http://wwpdb.org/validation/2016/XrayValidationReportHelp>
with specific help available everywhere you see the ⓘ symbol.

The following versions of software and data (see [references ⓘ](#)) were used in the production of this report:

MolProbity : 4.02b-467
Mogul : 1.7 (RC4), CSD as536be (2015)
Xtriage (Phenix) : 1.9-1692
EDS : rb-20026688
Percentile statistics : 20151230.v01 (using entries in the PDB archive December 30th 2015)
Refmac : 5.8.0135
CCP4 : 6.5.0
Ideal geometry (proteins) : Engh & Huber (2001)
Ideal geometry (DNA, RNA) : Parkinson et al. (1996)
Validation Pipeline (wwPDB-VP) : trunk26865

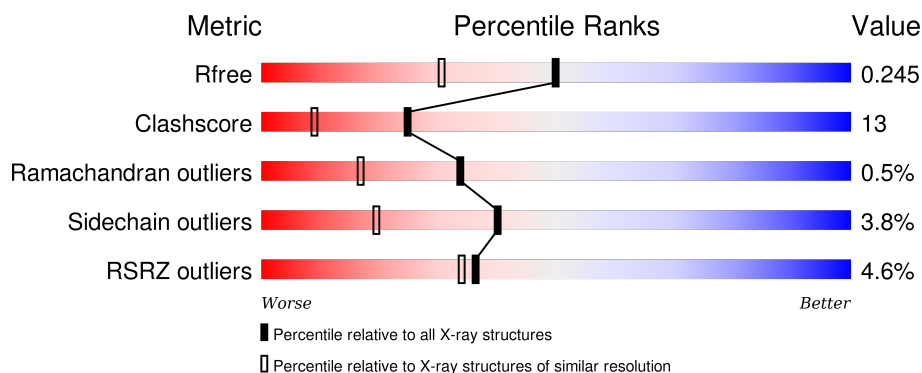
1 Overall quality at a glance

The following experimental techniques were used to determine the structure:

X-RAY DIFFRACTION

The reported resolution of this entry is 1.85 Å.

Percentile scores (ranging between 0-100) for global validation metrics of the entry are shown in the following graphic. The table shows the number of entries on which the scores are based.



Metric	Whole archive (#Entries)	Similar resolution (#Entries, resolution range(Å))
R_{free}	91344	1745 (1.86-1.86)
Clashscore	102246	1898 (1.86-1.86)
Ramachandran outliers	100387	1875 (1.86-1.86)
Sidechain outliers	100360	1875 (1.86-1.86)
RSRZ outliers	91569	1747 (1.86-1.86)

The table below summarises the geometric issues observed across the polymeric chains and their fit to the electron density. The red, orange, yellow and green segments on the lower bar indicate the fraction of residues that contain outliers for ≥ 3 , 2, 1 and 0 types of geometric quality criteria. A grey segment represents the fraction of residues that are not modelled. The numeric value for each fraction is indicated below the corresponding segment, with a dot representing fractions $\leq 5\%$. The upper red bar (where present) indicates the fraction of residues that have poor fit to the electron density. The numeric value is given above the bar.

Mol	Chain	Length	Quality of chain
1	A	311	<div> <div>6%</div> <div> <div></div> <div>75%</div> <div>21%</div> <div>• •</div> </div> </div>
1	B	311	<div> <div>3%</div> <div> <div></div> <div>75%</div> <div>21%</div> <div>• •</div> </div> </div>

2 Entry composition

There are 3 unique types of molecules in this entry. The entry contains 5223 atoms, of which 0 are hydrogens and 0 are deuteriums.

In the tables below, the ZeroOcc column contains the number of atoms modelled with zero occupancy, the AltConf column contains the number of residues with at least one atom in alternate conformation and the Trace column contains the number of residues modelled with at most 2 atoms.

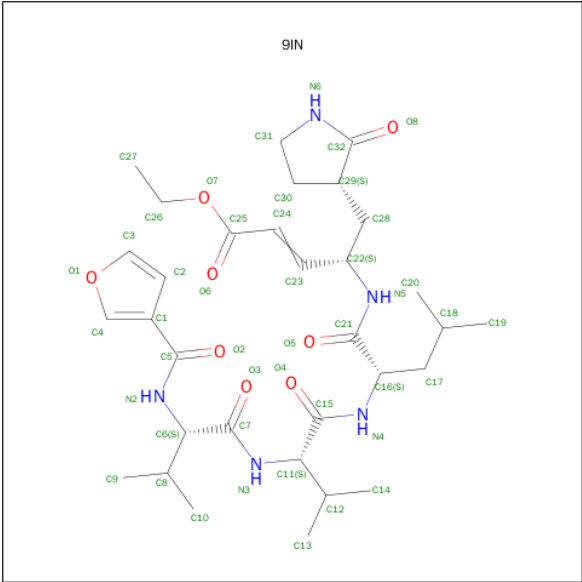
- Molecule 1 is a protein called 3C-like proteinase.

Mol	Chain	Residues	Atoms					ZeroOcc	AltConf	Trace
1	A	309	Total	C	N	O	S	0	0	0
			2386	1510	407	447	22			
1	B	304	Total	C	N	O	S	0	0	0
			2346	1481	402	441	22			

There are 10 discrepancies between the modelled and reference sequences:

Chain	Residue	Modelled	Actual	Comment	Reference
A	-4	GLY	-	CLONING ARTIFACT	UNP P59641
A	-3	PRO	-	CLONING ARTIFACT	UNP P59641
A	-2	LEU	-	CLONING ARTIFACT	UNP P59641
A	-1	GLY	-	CLONING ARTIFACT	UNP P59641
A	0	SER	-	CLONING ARTIFACT	UNP P59641
B	-4	GLY	-	CLONING ARTIFACT	UNP P59641
B	-3	PRO	-	CLONING ARTIFACT	UNP P59641
B	-2	LEU	-	CLONING ARTIFACT	UNP P59641
B	-1	GLY	-	CLONING ARTIFACT	UNP P59641
B	0	SER	-	CLONING ARTIFACT	UNP P59641

- Molecule 2 is N-(3-FUROYL)-D-VALYL-L-VALYL-N 1 -((1R,2Z)-4-ETHOXY-4-OXO-1-[[[(3S)-2-OXOPYRROLIDIN-3-YL]METHYL}BUT-2-ENYL)-D-LEUCINAMIDE (three-letter code: 9IN) (formula: C₃₂H₄₉N₅O₈).



Mol	Chain	Residues	Atoms				ZeroOcc	AltConf
2	A	1	Total	C	N	O	0	0
			45	32	5	8		
2	B	1	Total	C	N	O	0	0
			45	32	5	8		

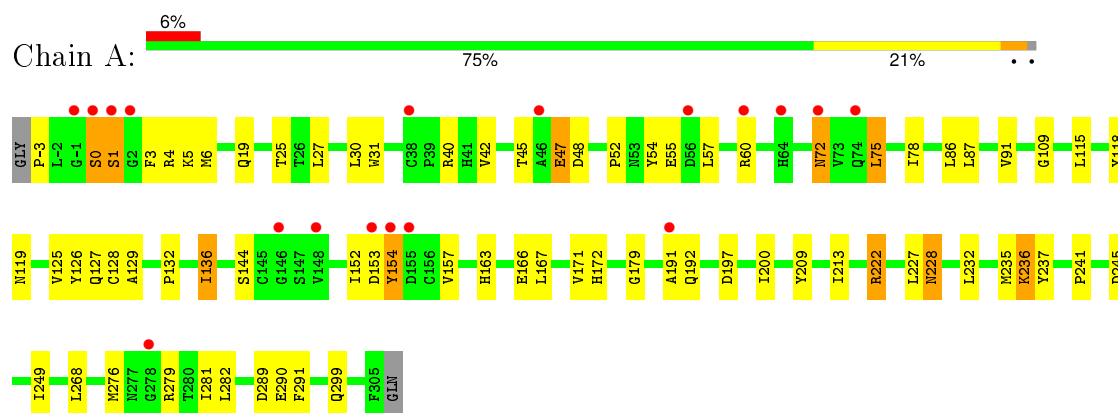
- Molecule 3 is water.

Mol	Chain	Residues	Atoms		ZeroOcc	AltConf
3	A	194	Total	O	0	0
			194	194		
3	B	207	Total	O	0	0
			207	207		

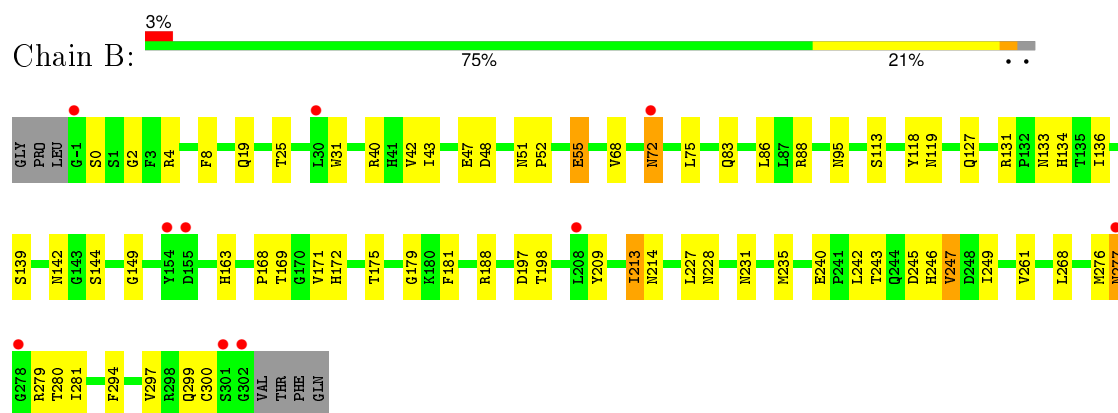
3 Residue-property plots [i](#)

These plots are drawn for all protein, RNA and DNA chains in the entry. The first graphic for a chain summarises the proportions of errors displayed in the second graphic. The second graphic shows the sequence view annotated by issues in geometry and electron density. Residues are color-coded according to the number of geometric quality criteria for which they contain at least one outlier: green = 0, yellow = 1, orange = 2 and red = 3 or more. A red dot above a residue indicates a poor fit to the electron density ($\text{RSRZ} > 2$). Stretches of 2 or more consecutive residues without any outlier are shown as a green connector. Residues present in the sample, but not in the model, are shown in grey.

• Molecule 1: 3C-like proteinase



• Molecule 1: 3C-like proteinase



4 Data and refinement statistics

Property	Value	Source
Space group	P 1 21 1	Depositor
Cell constants a, b, c, α , β , γ	52.11Å 94.99Å 67.60Å 90.00° 103.09° 90.00°	Depositor
Resolution (Å)	30.00 – 1.85 24.31 – 1.86	Depositor EDS
% Data completeness (in resolution range)	(Not available) (30.00-1.85) 95.6 (24.31-1.86)	Depositor EDS
R_{merge}	(Not available)	Depositor
R_{sym}	(Not available)	Depositor
$\langle I/\sigma(I) \rangle$ ¹	2.86 (at 1.86Å)	Xtriage
Refinement program	CNS 1.0	Depositor
R, R_{free}	0.215 , 0.245 0.214 , 0.245	Depositor DCC
R_{free} test set	2600 reflections (5.04%)	DCC
Wilson B-factor (Å ²)	25.2	Xtriage
Anisotropy	0.083	Xtriage
Bulk solvent k_{sol} (e/Å ³), B_{sol} (Å ²)	0.35 , 42.0	EDS
Estimated twinning fraction	No twinning to report.	Xtriage
L-test for twinning ²	$\langle L \rangle = 0.49$, $\langle L^2 \rangle = 0.32$	Xtriage
Outliers	0 of 53776 reflections	Xtriage
F_o, F_c correlation	0.95	EDS
Total number of atoms	5223	wwPDB-VP
Average B, all atoms (Å ²)	28.0	wwPDB-VP

Xtriage's analysis on translational NCS is as follows: *The largest off-origin peak in the Patterson function is 5.24% of the height of the origin peak. No significant pseudotranslation is detected.*

¹Intensities estimated from amplitudes.

²Theoretical values of $\langle |L| \rangle$, $\langle L^2 \rangle$ for acentric reflections are 0.5, 0.375 respectively for untwinned datasets, and 0.333, 0.2 for perfectly twinned datasets.

5 Model quality

5.1 Standard geometry

Bond lengths and bond angles in the following residue types are not validated in this section: 9IN

The Z score for a bond length (or angle) is the number of standard deviations the observed value is removed from the expected value. A bond length (or angle) with $|Z| > 5$ is considered an outlier worth inspection. RMSZ is the root-mean-square of all Z scores of the bond lengths (or angles).

Mol	Chain	Bond lengths		Bond angles	
		RMSZ	# Z >5	RMSZ	# Z >5
1	A	0.34	0/2440	0.65	0/3315
1	B	0.35	0/2398	0.65	0/3257
All	All	0.35	0/4838	0.65	0/6572

There are no bond length outliers.

There are no bond angle outliers.

There are no chirality outliers.

There are no planarity outliers.

5.2 Too-close contacts

In the following table, the Non-H and H(model) columns list the number of non-hydrogen atoms and hydrogen atoms in the chain respectively. The H(added) column lists the number of hydrogen atoms added and optimized by MolProbity. The Clashes column lists the number of clashes within the asymmetric unit, whereas Symm-Clashes lists symmetry related clashes.

Mol	Chain	Non-H	H(model)	H(added)	Clashes	Symm-Clashes
1	A	2386	0	2339	59	0
1	B	2346	0	2296	63	0
2	A	45	0	47	3	0
2	B	45	0	47	3	0
3	A	194	0	0	5	0
3	B	207	0	0	6	0
All	All	5223	0	4729	122	0

The all-atom clashscore is defined as the number of clashes found per 1000 atoms (including hydrogen atoms). The all-atom clashscore for this structure is 13.

All (122) close contacts within the same asymmetric unit are listed below, sorted by their clash

magnitude.

Atom-1	Atom-2	Interatomic distance (Å)	Clash overlap (Å)
1:B:4:ARG:H	1:B:299:GLN:HE22	1.08	1.01
1:B:231:ASN:HB3	1:B:235:MET:HE3	1.43	1.00
1:B:277:ASN:HD22	1:B:279:ARG:HH12	1.10	0.92
1:B:88:ARG:HG3	1:B:88:ARG:HH11	1.43	0.83
1:A:222:ARG:HG3	1:A:222:ARG:HH11	1.45	0.82
1:A:245:ASP:O	1:A:249:ILE:HD13	1.80	0.82
1:B:51:ASN:HD22	1:B:188:ARG:NH1	1.83	0.76
1:B:277:ASN:HD22	1:B:279:ARG:NH1	1.84	0.76
1:B:68:VAL:HG23	1:B:75:LEU:HB2	1.68	0.74
1:B:51:ASN:HD22	1:B:188:ARG:HH12	1.37	0.70
1:B:4:ARG:H	1:B:299:GLN:NE2	1.87	0.70
1:B:169:THR:HG21	3:B:2140:HOH:O	1.91	0.69
1:B:231:ASN:HB3	1:B:235:MET:CE	2.21	0.69
1:A:60:ARG:NH1	1:A:60:ARG:HB2	2.10	0.67
1:A:136:ILE:HD13	1:A:172:HIS:O	1.97	0.65
1:A:1:SER:HB2	3:A:1128:HOH:O	1.96	0.65
1:B:55:GLU:HB2	3:B:2051:HOH:O	1.97	0.64
1:B:86:LEU:HG	1:B:179:GLY:HA2	1.80	0.64
1:B:209:TYR:O	1:B:213:ILE:HG23	1.98	0.64
1:A:127:GLN:HG2	3:A:1020:HOH:O	1.99	0.63
1:B:227:LEU:HD21	1:B:242:LEU:O	1.99	0.62
1:A:40:ARG:HA	1:A:87:LEU:HG	1.81	0.62
1:A:6:MET:CE	1:A:299:GLN:HG3	2.30	0.61
1:B:48:ASP:O	1:B:52:PRO:HB3	1.98	0.61
1:B:277:ASN:ND2	1:B:279:ARG:HH12	1.92	0.60
1:B:169:THR:HG23	1:B:171:VAL:HG22	1.83	0.60
1:B:51:ASN:ND2	1:B:188:ARG:HH12	1.97	0.60
1:A:-3:PRO:N	3:A:1067:HOH:O	2.33	0.60
1:B:72:ASN:H	1:B:72:ASN:HD22	1.47	0.60
1:A:236:LYS:HG3	1:A:237:TYR:CD1	2.37	0.59
1:A:60:ARG:HH11	1:A:60:ARG:HB2	1.67	0.58
1:A:276:MET:HE3	1:A:281:ILE:HG13	1.86	0.57
1:A:276:MET:HE2	1:A:279:ARG:O	2.05	0.56
1:A:75:LEU:HD22	1:A:91:VAL:HB	1.88	0.55
1:B:247:VAL:HB	1:B:261:VAL:HG11	1.88	0.55
1:A:6:MET:HE2	1:A:299:GLN:HG3	1.89	0.55
1:B:131:ARG:HD2	1:B:197:ASP:OD1	2.07	0.55
1:B:88:ARG:HG3	1:B:88:ARG:NH1	2.18	0.54
1:B:8:PHE:HD1	1:B:113:SER:HG	1.53	0.54
1:B:83:GLN:HB2	1:B:88:ARG:NH1	2.22	0.54
1:A:25:THR:HG23	2:A:1001:9IN:H273	1.90	0.54

Continued on next page...

Continued from previous page...

Atom-1	Atom-2	Interatomic distance (Å)	Clash overlap (Å)
1:A:86:LEU:HG	1:A:179:GLY:HA2	1.89	0.54
1:A:48:ASP:OD2	1:A:57:LEU:HD11	2.08	0.54
1:B:213:ILE:CD1	1:B:300:CYS:HB3	2.38	0.53
1:B:136:ILE:N	1:B:136:ILE:HD12	2.23	0.53
1:B:276:MET:HE2	1:B:279:ARG:O	2.08	0.53
1:A:236:LYS:O	1:A:236:LYS:HD2	2.08	0.53
1:B:168:PRO:HG3	2:B:2001:9IN:C5	2.38	0.53
1:B:213:ILE:HD11	1:B:300:CYS:HB3	1.89	0.53
1:A:276:MET:CE	1:A:281:ILE:HG13	2.39	0.52
1:A:163:HIS:HE1	1:A:172:HIS:HB3	1.73	0.52
1:B:4:ARG:N	1:B:299:GLN:HE22	1.91	0.51
1:A:31:TRP:CE2	1:A:75:LEU:HD11	2.45	0.51
1:B:131:ARG:CD	1:B:197:ASP:OD1	2.58	0.51
1:A:209:TYR:O	1:A:213:ILE:HG12	2.09	0.51
1:B:31:TRP:CE2	1:B:95:ASN:HB2	2.46	0.51
1:B:19:GLN:NE2	1:B:119:ASN:HD22	2.09	0.51
1:B:31:TRP:CD2	1:B:95:ASN:HB2	2.47	0.50
1:B:243:THR:H	1:B:246:HIS:CD2	2.30	0.50
1:A:6:MET:HE1	3:B:2094:HOH:O	2.12	0.49
1:A:4:ARG:HG2	1:B:139:SER:HB2	1.93	0.49
1:A:136:ILE:H	1:A:136:ILE:HD13	1.76	0.49
1:A:55:GLU:CD	1:A:55:GLU:H	2.16	0.49
1:A:152:ILE:HD12	1:A:157:VAL:HG22	1.95	0.49
1:B:245:ASP:O	1:B:249:ILE:HG12	2.12	0.48
1:A:166:GLU:OE2	1:B:0:SER:O	2.31	0.48
1:A:6:MET:HE3	3:A:1071:HOH:O	2.12	0.47
1:A:1:SER:N	3:A:1188:HOH:O	2.47	0.47
1:A:5:LYS:HG2	1:A:291:PHE:CZ	2.50	0.47
1:A:19:GLN:HE21	1:A:119:ASN:HA	1.80	0.47
1:A:78:ILE:HD12	1:A:78:ILE:C	2.35	0.47
1:B:68:VAL:HG22	1:B:75:LEU:O	2.15	0.47
2:B:2001:9IN:HN2	2:B:2001:9IN:H4	1.15	0.47
1:A:109:GLY:HA2	1:A:200:ILE:HD13	1.97	0.47
1:B:19:GLN:HE22	1:B:119:ASN:HD22	1.63	0.46
1:B:113:SER:O	1:B:149:GLY:HA2	2.16	0.46
1:B:133:ASN:O	1:B:134:HIS:HB2	2.16	0.46
1:A:47:GLU:N	1:A:47:GLU:OE1	2.45	0.46
1:A:163:HIS:CE1	1:A:172:HIS:HB3	2.50	0.46
1:A:0:SER:O	1:A:1:SER:HB2	2.16	0.46
1:A:222:ARG:CG	1:A:222:ARG:HH11	2.19	0.45
1:A:136:ILE:HD13	1:A:136:ILE:N	2.31	0.45

Continued on next page...

Continued from previous page...

Atom-1	Atom-2	Interatomic distance (Å)	Clash overlap (Å)
1:A:192:GLN:NE2	2:A:1001:9IN:H101	2.32	0.45
1:A:222:ARG:O	1:A:222:ARG:HG3	2.15	0.45
1:B:142:ASN:ND2	3:B:2167:HOH:O	2.50	0.45
1:B:51:ASN:ND2	1:B:188:ARG:NH1	2.57	0.45
1:B:68:VAL:CG2	1:B:75:LEU:O	2.65	0.45
1:A:19:GLN:HE21	1:A:119:ASN:CA	2.30	0.45
1:A:153:ASP:O	1:A:154:TYR:HB3	2.18	0.44
1:B:25:THR:HG21	1:B:42:VAL:O	2.18	0.44
1:B:25:THR:CG2	1:B:42:VAL:O	2.66	0.44
1:B:118:TYR:CE1	1:B:144:SER:HB3	2.53	0.44
1:A:3:PHE:HB2	1:A:282:LEU:HD13	2.00	0.44
1:B:169:THR:CG2	1:B:171:VAL:HG22	2.46	0.44
1:B:86:LEU:HG	1:B:179:GLY:CA	2.47	0.44
1:B:47:GLU:CD	1:B:47:GLU:H	2.21	0.43
1:B:168:PRO:HD2	3:B:2121:HOH:O	2.18	0.43
1:A:115:LEU:HD13	1:A:125:VAL:CG1	2.48	0.43
1:B:175:THR:HG22	1:B:181:PHE:HA	1.99	0.43
1:B:68:VAL:CG2	1:B:75:LEU:HB2	2.45	0.43
1:A:191:ALA:HA	2:A:1001:9IN:C2	2.49	0.43
2:B:2001:9IN:H271	3:B:2151:HOH:O	2.18	0.43
1:A:118:TYR:CE1	1:A:144:SER:HB3	2.54	0.43
1:B:276:MET:CE	1:B:281:ILE:HG13	2.49	0.42
1:B:198:THR:OG1	1:B:240:GLU:HG2	2.19	0.42
1:A:167:LEU:HD12	1:A:171:VAL:HG23	2.00	0.42
1:B:243:THR:H	1:B:246:HIS:HD2	1.68	0.42
1:A:126:TYR:HE1	1:A:128:CYS:SG	2.42	0.42
1:A:27:LEU:HG	1:A:42:VAL:HG23	2.02	0.42
1:A:115:LEU:CD1	1:A:125:VAL:CG1	2.98	0.41
1:B:40:ARG:O	1:B:43:ILE:HG12	2.19	0.41
1:A:72:ASN:OD1	1:A:72:ASN:N	2.49	0.41
1:A:228:ASN:O	1:A:232:LEU:HG	2.21	0.41
1:A:52:PRO:HG2	1:A:54:TYR:CE1	2.56	0.41
1:B:276:MET:HE2	1:B:280:THR:HA	2.02	0.41
1:A:129:ALA:HB3	1:A:290:GLU:OE2	2.20	0.41
1:B:294:PHE:O	1:B:297:VAL:HG22	2.20	0.41
1:B:2:GLY:H	1:B:214:ASN:HD21	1.68	0.41
1:A:235:MET:CE	1:A:241:PRO:HG3	2.51	0.41
1:A:19:GLN:NE2	1:A:119:ASN:HD22	2.19	0.41
1:A:132:PRO:HD2	1:A:197:ASP:OD1	2.21	0.41
1:B:163:HIS:HE1	1:B:172:HIS:HB3	1.87	0.40

There are no symmetry-related clashes.

5.3 Torsion angles

5.3.1 Protein backbone

In the following table, the Percentiles column shows the percent Ramachandran outliers of the chain as a percentile score with respect to all X-ray entries followed by that with respect to entries of similar resolution.

The Analysed column shows the number of residues for which the backbone conformation was analysed, and the total number of residues.

Mol	Chain	Analysed	Favoured	Allowed	Outliers	Percentiles	
1	A	307/311 (99%)	298 (97%)	6 (2%)	3 (1%)	19	6
1	B	302/311 (97%)	296 (98%)	6 (2%)	0	100	100
All	All	609/622 (98%)	594 (98%)	12 (2%)	3 (0%)	34	17

All (3) Ramachandran outliers are listed below:

Mol	Chain	Res	Type
1	A	1	SER
1	A	0	SER
1	A	154	TYR

5.3.2 Protein sidechains

In the following table, the Percentiles column shows the percent sidechain outliers of the chain as a percentile score with respect to all X-ray entries followed by that with respect to entries of similar resolution.

The Analysed column shows the number of residues for which the sidechain conformation was analysed, and the total number of residues.

Mol	Chain	Analysed	Rotameric	Outliers	Percentiles	
1	A	265/266 (100%)	253 (96%)	12 (4%)	34	14
1	B	260/266 (98%)	252 (97%)	8 (3%)	47	28
All	All	525/532 (99%)	505 (96%)	20 (4%)	40	19

All (20) residues with a non-rotameric sidechain are listed below:

Mol	Chain	Res	Type
1	A	30	LEU
1	A	45	THR
1	A	47	GLU

Continued on next page...

Continued from previous page...

Mol	Chain	Res	Type
1	A	72	ASN
1	A	75	LEU
1	A	136	ILE
1	A	222	ARG
1	A	227	LEU
1	A	228	ASN
1	A	236	LYS
1	A	268	LEU
1	A	289	ASP
1	B	55	GLU
1	B	72	ASN
1	B	127	GLN
1	B	213	ILE
1	B	228	ASN
1	B	247	VAL
1	B	268	LEU
1	B	277	ASN

Some sidechains can be flipped to improve hydrogen bonding and reduce clashes. All (19) such sidechains are listed below:

Mol	Chain	Res	Type
1	A	19	GLN
1	A	51	ASN
1	A	84	ASN
1	A	228	ASN
1	A	246	HIS
1	A	277	ASN
1	A	299	GLN
1	B	19	GLN
1	B	51	ASN
1	B	69	GLN
1	B	72	ASN
1	B	127	GLN
1	B	134	HIS
1	B	142	ASN
1	B	214	ASN
1	B	246	HIS
1	B	274	ASN
1	B	277	ASN
1	B	299	GLN

5.3.3 RNA ⓘ

There are no RNA molecules in this entry.

5.4 Non-standard residues in protein, DNA, RNA chains ⓘ

There are no non-standard protein/DNA/RNA residues in this entry.

5.5 Carbohydrates ⓘ

There are no carbohydrates in this entry.

5.6 Ligand geometry ⓘ

2 ligands are modelled in this entry.

In the following table, the Counts columns list the number of bonds (or angles) for which Mogul statistics could be retrieved, the number of bonds (or angles) that are observed in the model and the number of bonds (or angles) that are defined in the chemical component dictionary. The Link column lists molecule types, if any, to which the group is linked. The Z score for a bond length (or angle) is the number of standard deviations the observed value is removed from the expected value. A bond length (or angle) with $|Z| > 2$ is considered an outlier worth inspection. RMSZ is the root-mean-square of all Z scores of the bond lengths (or angles).

Mol	Type	Chain	Res	Link	Bond lengths			Bond angles		
					Counts	RMSZ	$\# Z > 2$	Counts	RMSZ	$\# Z > 2$
2	9IN	A	1001	1	42,46,46	2.98	14 (33%)	51,62,62	3.17	18 (35%)
2	9IN	B	2001	1	42,46,46	2.96	12 (28%)	51,62,62	2.60	14 (27%)

In the following table, the Chirals column lists the number of chiral outliers, the number of chiral centers analysed, the number of these observed in the model and the number defined in the chemical component dictionary. Similar counts are reported in the Torsion and Rings columns. '-' means no outliers of that kind were identified.

Mol	Type	Chain	Res	Link	Chirals	Torsions	Rings
2	9IN	A	1001	1	-	0/56/66/66	0/1/2/2
2	9IN	B	2001	1	-	0/56/66/66	0/1/2/2

All (26) bond length outliers are listed below:

Mol	Chain	Res	Type	Atoms	Z	Observed(Å)	Ideal(Å)
2	B	2001	9IN	C4-C1	-10.18	1.25	1.37

Continued on next page...

Continued from previous page...

Mol	Chain	Res	Type	Atoms	Z	Observed(Å)	Ideal(Å)
2	A	1001	9IN	C4-C1	-9.59	1.26	1.37
2	A	1001	9IN	C22-N5	-9.01	1.32	1.46
2	B	2001	9IN	C7-N3	-6.57	1.18	1.34
2	A	1001	9IN	C7-N3	-6.52	1.18	1.34
2	B	2001	9IN	C22-N5	-5.97	1.37	1.46
2	A	1001	9IN	C6-N2	-2.50	1.40	1.45
2	A	1001	9IN	C28-C29	-2.41	1.47	1.53
2	A	1001	9IN	C28-C22	-2.14	1.47	1.54
2	A	1001	9IN	C5-N2	2.01	1.38	1.34
2	B	2001	9IN	O6-C25	2.13	1.26	1.21
2	A	1001	9IN	O6-C25	2.55	1.27	1.21
2	B	2001	9IN	O7-C25	2.62	1.40	1.34
2	A	1001	9IN	O7-C25	2.70	1.40	1.34
2	B	2001	9IN	C15-N4	2.80	1.40	1.34
2	B	2001	9IN	C5-N2	3.19	1.41	1.34
2	B	2001	9IN	C21-N5	3.20	1.41	1.34
2	A	1001	9IN	C16-N4	3.32	1.53	1.45
2	A	1001	9IN	O5-C21	3.45	1.30	1.23
2	B	2001	9IN	C16-N4	3.49	1.53	1.45
2	B	2001	9IN	O5-C21	3.50	1.30	1.23
2	A	1001	9IN	C1-C5	3.50	1.57	1.50
2	A	1001	9IN	C15-N4	3.54	1.42	1.34
2	B	2001	9IN	C1-C5	4.77	1.60	1.50
2	A	1001	9IN	C24-C23	7.15	1.51	1.32
2	B	2001	9IN	C24-C23	7.86	1.53	1.32

All (32) bond angle outliers are listed below:

Mol	Chain	Res	Type	Atoms	Z	Observed(°)	Ideal(°)
2	A	1001	9IN	C1-C5-N2	-16.70	87.18	116.93
2	B	2001	9IN	C1-C5-N2	-13.30	93.25	116.93
2	A	1001	9IN	C12-C11-C15	-6.46	94.37	111.31
2	B	2001	9IN	C22-C23-C24	-4.87	100.66	126.58
2	A	1001	9IN	C13-C12-C11	-4.45	97.81	111.14
2	A	1001	9IN	C22-C23-C24	-3.94	105.62	126.58
2	B	2001	9IN	C12-C11-C15	-3.82	101.29	111.31
2	A	1001	9IN	C4-C1-C5	-3.10	109.42	124.83
2	B	2001	9IN	C10-C8-C9	-2.98	101.90	110.67
2	A	1001	9IN	C6-C7-N3	-2.87	110.10	116.44
2	B	2001	9IN	C6-C7-N3	-2.75	110.37	116.44
2	A	1001	9IN	C28-C22-C23	-2.70	106.68	111.09
2	A	1001	9IN	C14-C12-C11	-2.68	103.12	111.14

Continued on next page...

Continued from previous page...

Mol	Chain	Res	Type	Atoms	Z	Observed(°)	Ideal(°)
2	A	1001	9IN	C10-C8-C9	-2.67	102.82	110.67
2	B	2001	9IN	O8-C32-N6	-2.64	123.05	125.96
2	B	2001	9IN	C4-C1-C5	-2.60	111.92	124.83
2	B	2001	9IN	C12-C11-N3	-2.60	104.51	111.36
2	A	1001	9IN	C11-N3-C7	-2.59	115.04	121.85
2	B	2001	9IN	C11-N3-C7	-2.58	115.06	121.85
2	B	2001	9IN	C28-C22-C23	-2.51	107.00	111.09
2	A	1001	9IN	C21-C16-N4	-2.39	104.53	111.26
2	B	2001	9IN	C14-C12-C11	-2.29	104.28	111.14
2	A	1001	9IN	O8-C32-N6	-2.25	123.48	125.96
2	A	1001	9IN	C8-C6-N2	-2.17	105.64	111.36
2	A	1001	9IN	C12-C11-N3	-2.16	105.65	111.36
2	B	2001	9IN	O2-C5-C1	2.31	124.93	120.97
2	A	1001	9IN	O3-C7-N3	3.04	128.89	122.93
2	A	1001	9IN	O2-C5-N2	3.13	128.09	122.44
2	B	2001	9IN	O3-C7-N3	3.58	129.93	122.93
2	A	1001	9IN	O2-C5-C1	3.85	127.55	120.97
2	B	2001	9IN	C9-C8-C6	4.65	125.06	111.14
2	A	1001	9IN	C9-C8-C6	5.13	126.49	111.14

There are no chirality outliers.

There are no torsion outliers.

There are no ring outliers.

2 monomers are involved in 6 short contacts:

Mol	Chain	Res	Type	Clashes	Symm-Clashes
2	A	1001	9IN	3	0
2	B	2001	9IN	3	0

5.7 Other polymers [i](#)

There are no such residues in this entry.

5.8 Polymer linkage issues [i](#)

There are no chain breaks in this entry.

6 Fit of model and data ⓘ

6.1 Protein, DNA and RNA chains ⓘ

In the following table, the column labelled ‘#RSRZ> 2’ contains the number (and percentage) of RSRZ outliers, followed by percent RSRZ outliers for the chain as percentile scores relative to all X-ray entries and entries of similar resolution. The OWAB column contains the minimum, median, 95th percentile and maximum values of the occupancy-weighted average B-factor per residue. The column labelled ‘Q< 0.9’ lists the number of (and percentage) of residues with an average occupancy less than 0.9.

Mol	Chain	Analysed	<RSRZ>	#RSRZ>2	OWAB(Å ²)	Q<0.9
1	A	309/311 (99%)	0.44	18 (5%) 26 25	18, 26, 46, 62	0
1	B	304/311 (97%)	0.24	10 (3%) 50 47	17, 26, 41, 59	0
All	All	613/622 (98%)	0.34	28 (4%) 36 34	17, 26, 44, 62	0

All (28) RSRZ outliers are listed below:

Mol	Chain	Res	Type	RSRZ
1	A	0	SER	6.5
1	B	154	TYR	6.4
1	A	154	TYR	5.4
1	A	1	SER	5.3
1	B	302	GLY	4.9
1	A	2	GLY	4.8
1	A	46	ALA	4.7
1	A	72	ASN	4.3
1	B	301	SER	4.2
1	A	-1	GLY	3.7
1	B	72	ASN	3.6
1	B	277	ASN	3.5
1	A	155	ASP	3.2
1	B	-1	GLY	2.9
1	A	278	GLY	2.8
1	A	56	ASP	2.8
1	B	208	LEU	2.4
1	A	60	ARG	2.4
1	B	155	ASP	2.3
1	A	148	VAL	2.3
1	B	30	LEU	2.2
1	A	64	HIS	2.2
1	A	74	GLN	2.1
1	A	191	ALA	2.1

Continued on next page...

Continued from previous page...

Mol	Chain	Res	Type	RSRZ
1	A	146	GLY	2.1
1	B	278	GLY	2.1
1	A	38	CYS	2.0
1	A	153	ASP	2.0

6.2 Non-standard residues in protein, DNA, RNA chains [i](#)

There are no non-standard protein/DNA/RNA residues in this entry.

6.3 Carbohydrates [i](#)

There are no carbohydrates in this entry.

6.4 Ligands [i](#)

In the following table, the Atoms column lists the number of modelled atoms in the group and the number defined in the chemical component dictionary. LLDF column lists the quality of electron density of the group with respect to its neighbouring residues in protein, DNA or RNA chains. The B-factors column lists the minimum, median, 95th percentile and maximum values of B factors of atoms in the group. The column labelled 'Q< 0.9' lists the number of atoms with occupancy less than 0.9.

Mol	Type	Chain	Res	Atoms	RSCC	RSR	LLDF	B-factors(\AA^2)	Q<0.9
2	9IN	B	2001	45/45	0.82	0.15	1.27	23,28,41,43	0
2	9IN	A	1001	45/45	0.84	0.15	0.65	25,30,51,53	0

6.5 Other polymers [i](#)

There are no such residues in this entry.