



Full wwPDB X-ray Structure Validation Report ⓘ

Feb 1, 2016 – 02:51 PM GMT

PDB ID : 4AQ7
Title : Ternary complex of E. coli leucyl-tRNA synthetase, tRNA(leu) and leucyl-adenylate analogue in the aminoacylation conformation
Authors : Palencia, A.; Crepin, T.; Vu, M.T.; Lincecum Jr, T.L.; Martinis, S.A.; Cusack, S.
Deposited on : 2012-04-13
Resolution : 2.50 Å(reported)

This is a Full wwPDB X-ray Structure Validation Report for a publicly released PDB entry.
We welcome your comments at validation@mail.wwpdb.org
A user guide is available at
<http://wwpdb.org/validation/2016/XrayValidationReportHelp>
with specific help available everywhere you see the ⓘ symbol.

The following versions of software and data (see [references ⓘ](#)) were used in the production of this report:

MolProbity : 4.02b-467
Mogul : 1.7 (RC4), CSD as536be (2015)
Xtriage (Phenix) : 1.9-1692
EDS : rb-20026688
Percentile statistics : 20151230.v01 (using entries in the PDB archive December 30th 2015)
Refmac : 5.8.0135
CCP4 : 6.5.0
Ideal geometry (proteins) : Engh & Huber (2001)
Ideal geometry (DNA, RNA) : Parkinson et al. (1996)
Validation Pipeline (wwPDB-VP) : trunk26865

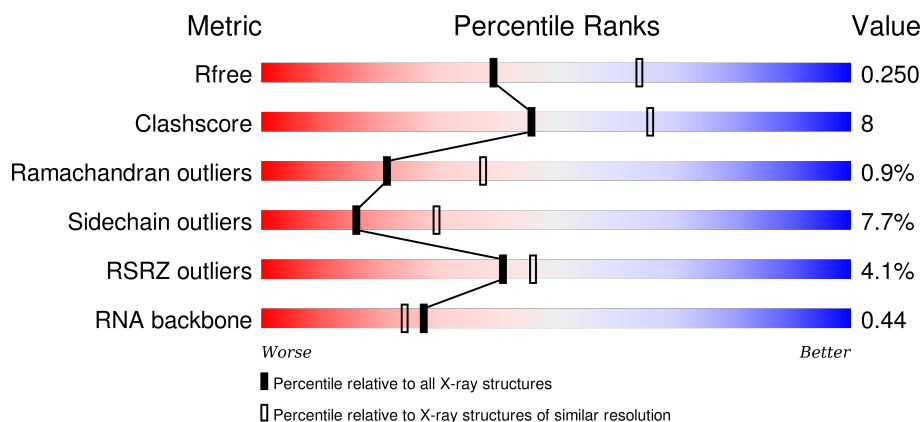
1 Overall quality at a glance

The following experimental techniques were used to determine the structure:

X-RAY DIFFRACTION

The reported resolution of this entry is 2.50 Å.

Percentile scores (ranging between 0-100) for global validation metrics of the entry are shown in the following graphic. The table shows the number of entries on which the scores are based.



Metric	Whole archive (#Entries)	Similar resolution (#Entries, resolution range(Å))
R_{free}	91344	3553 (2.50-2.50)
Clashscore	102246	4242 (2.50-2.50)
Ramachandran outliers	100387	4156 (2.50-2.50)
Sidechain outliers	100360	4158 (2.50-2.50)
RSRZ outliers	91569	3562 (2.50-2.50)
RNA backbone	2183	1172 (3.00-2.00)

The table below summarises the geometric issues observed across the polymeric chains and their fit to the electron density. The red, orange, yellow and green segments on the lower bar indicate the fraction of residues that contain outliers for ≥ 3 , 2, 1 and 0 types of geometric quality criteria. A grey segment represents the fraction of residues that are not modelled. The numeric value for each fraction is indicated below the corresponding segment, with a dot representing fractions $\leq 5\%$. The upper red bar (where present) indicates the fraction of residues that have poor fit to the electron density. The numeric value is given above the bar.

Mol	Chain	Length	Quality of chain
1	A	880	<div> <div>3%</div> <div>77%</div> <div>19%</div> <div>..</div> </div>
1	D	880	<div> <div>5%</div> <div>76%</div> <div>19%</div> <div>..</div> </div>
2	B	87	<div> <div>%</div> <div>48%</div> <div>32%</div> <div>9%</div> <div>9%</div> </div>
2	E	87	<div> <div>6%</div> <div>47%</div> <div>32%</div> <div>8%</div> <div>11%</div> </div>

The following table lists non-polymeric compounds, carbohydrate monomers and non-standard residues in protein, DNA, RNA chains that are outliers for geometric or electron-density-fit criteria:

Mol	Type	Chain	Res	Chirality	Geometry	Clashes	Electron density
5	LEU	A	902	-	-	-	X

2 Entry composition

There are 7 unique types of molecules in this entry. The entry contains 17212 atoms, of which 0 are hydrogens and 0 are deuteriums.

In the tables below, the ZeroOcc column contains the number of atoms modelled with zero occupancy, the AltConf column contains the number of residues with at least one atom in alternate conformation and the Trace column contains the number of residues modelled with at most 2 atoms.

- Molecule 1 is a protein called LEUCINE-TRNA LIGASE.

Mol	Chain	Residues	Atoms					ZeroOcc	AltConf	Trace
1	A	860	Total	C	N	O	S	0	0	0
			6835	4339	1159	1292	45			
1	D	860	Total	C	N	O	S	0	0	0
			6835	4339	1159	1292	45			

There are 40 discrepancies between the modelled and reference sequences:

Chain	Residue	Modelled	Actual	Comment	Reference
A	-19	MET	-	EXPRESSION TAG	UNP P07813
A	-18	GLY	-	EXPRESSION TAG	UNP P07813
A	-17	SER	-	EXPRESSION TAG	UNP P07813
A	-16	SER	-	EXPRESSION TAG	UNP P07813
A	-15	HIS	-	EXPRESSION TAG	UNP P07813
A	-14	HIS	-	EXPRESSION TAG	UNP P07813
A	-13	HIS	-	EXPRESSION TAG	UNP P07813
A	-12	HIS	-	EXPRESSION TAG	UNP P07813
A	-11	HIS	-	EXPRESSION TAG	UNP P07813
A	-10	HIS	-	EXPRESSION TAG	UNP P07813
A	-9	SER	-	EXPRESSION TAG	UNP P07813
A	-8	SER	-	EXPRESSION TAG	UNP P07813
A	-7	GLY	-	EXPRESSION TAG	UNP P07813
A	-6	LEU	-	EXPRESSION TAG	UNP P07813
A	-5	VAL	-	EXPRESSION TAG	UNP P07813
A	-4	PRO	-	EXPRESSION TAG	UNP P07813
A	-3	ARG	-	EXPRESSION TAG	UNP P07813
A	-2	GLY	-	EXPRESSION TAG	UNP P07813
A	-1	SER	-	EXPRESSION TAG	UNP P07813
A	0	HIS	-	EXPRESSION TAG	UNP P07813
D	-19	MET	-	EXPRESSION TAG	UNP P07813
D	-18	GLY	-	EXPRESSION TAG	UNP P07813
D	-17	SER	-	EXPRESSION TAG	UNP P07813
D	-16	SER	-	EXPRESSION TAG	UNP P07813
D	-15	HIS	-	EXPRESSION TAG	UNP P07813

Continued on next page...

Continued from previous page...

Chain	Residue	Modelled	Actual	Comment	Reference
D	-14	HIS	-	EXPRESSION TAG	UNP P07813
D	-13	HIS	-	EXPRESSION TAG	UNP P07813
D	-12	HIS	-	EXPRESSION TAG	UNP P07813
D	-11	HIS	-	EXPRESSION TAG	UNP P07813
D	-10	HIS	-	EXPRESSION TAG	UNP P07813
D	-9	SER	-	EXPRESSION TAG	UNP P07813
D	-8	SER	-	EXPRESSION TAG	UNP P07813
D	-7	GLY	-	EXPRESSION TAG	UNP P07813
D	-6	LEU	-	EXPRESSION TAG	UNP P07813
D	-5	VAL	-	EXPRESSION TAG	UNP P07813
D	-4	PRO	-	EXPRESSION TAG	UNP P07813
D	-3	ARG	-	EXPRESSION TAG	UNP P07813
D	-2	GLY	-	EXPRESSION TAG	UNP P07813
D	-1	SER	-	EXPRESSION TAG	UNP P07813
D	0	HIS	-	EXPRESSION TAG	UNP P07813

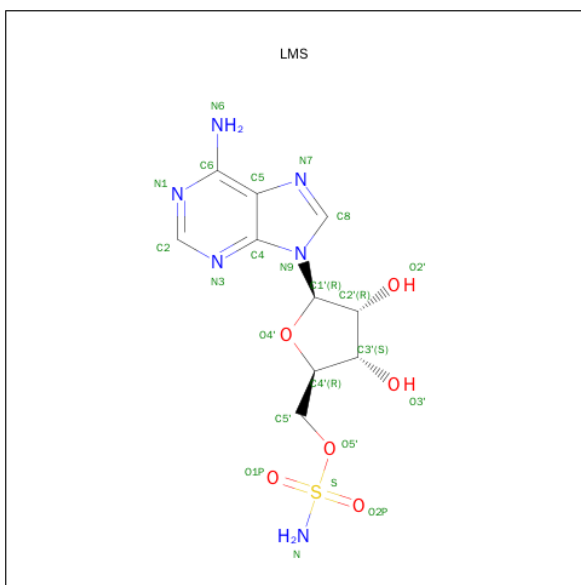
- Molecule 2 is a RNA chain called E. COLI TRNALEU UAA ISOACCEPTOR.

Mol	Chain	Residues	Atoms					ZeroOcc	AltConf	Trace
2	B	79	Total	C	N	O	P	0	0	0
			1675	743	303	550	79			
2	E	77	Total	C	N	O	P	0	0	0
			1632	724	295	536	77			

- Molecule 3 is ZINC ION (three-letter code: ZN) (formula: Zn).

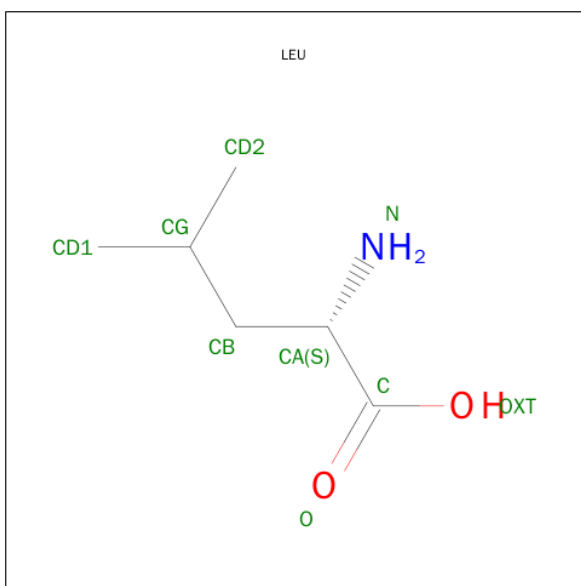
Mol	Chain	Residues	Atoms		ZeroOcc	AltConf
3	A	1	Total	Zn	0	0
			1	1		
3	D	1	Total	Zn	0	0
			1	1		

- Molecule 4 is [(2R,3S,4R,5R)-5-(6-AMINO-9H-PURIN-9-YL)-3,4-DIHYDROXYTE TRAHYDRO-2-FURANYL]METHYL SULFAMATE (three-letter code: LMS) (formula: C₁₀H₁₄N₆O₆S).



Mol	Chain	Residues	Atoms					ZeroOcc	AltConf
4	A	1	Total	C	N	O	S	0	0
			23	10	6	6	1		
4	D	1	Total	C	N	O	S	0	0
			23	10	6	6	1		

- Molecule 5 is LEUCINE (three-letter code: LEU) (formula: $C_6H_{13}NO_2$).



Mol	Chain	Residues	Atoms				ZeroOcc	AltConf
5	A	1	Total	C	N	O	0	0
			8	6	1	1		
5	D	1	Total	C	N	O	0	0
			8	6	1	1		

- Molecule 6 is MAGNESIUM ION (three-letter code: MG) (formula: Mg).

Mol	Chain	Residues	Atoms		ZeroOcc	AltConf
6	B	1	Total	Mg	0	0
			1	1		
6	E	1	Total	Mg	0	0
			1	1		

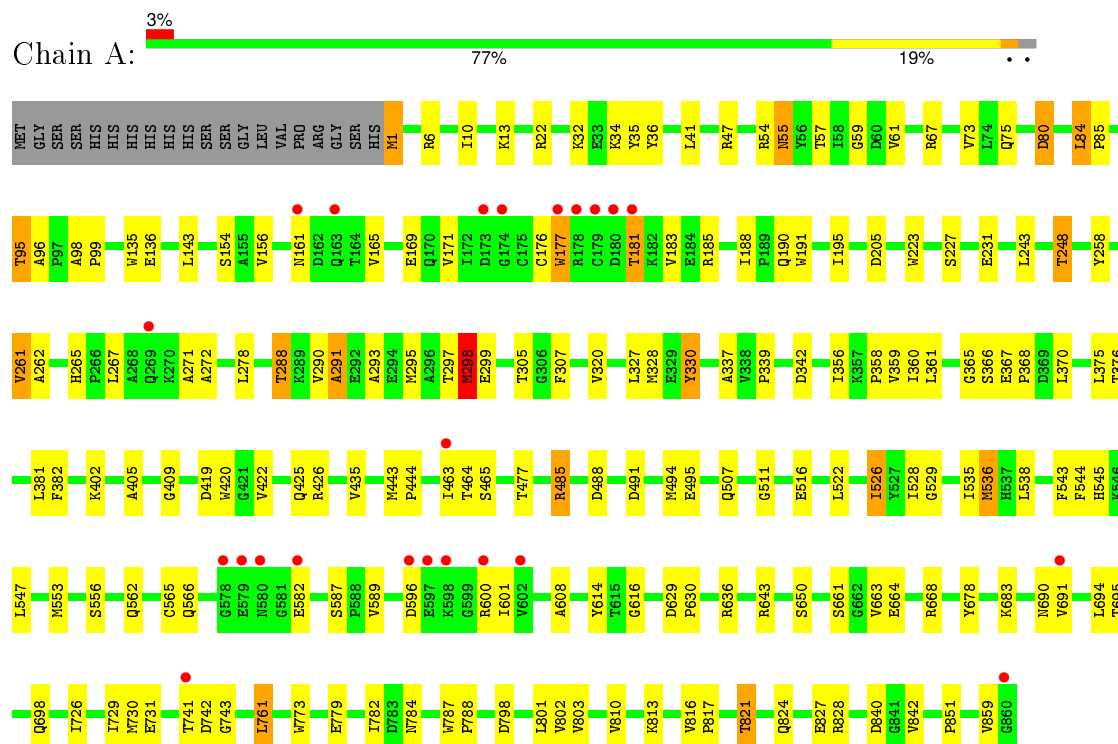
- Molecule 7 is water.

Mol	Chain	Residues	Atoms		ZeroOcc	AltConf
7	A	104	Total	O	0	0
			104	104		
7	B	15	Total	O	0	0
			15	15		
7	D	47	Total	O	0	0
			47	47		
7	E	3	Total	O	0	0
			3	3		

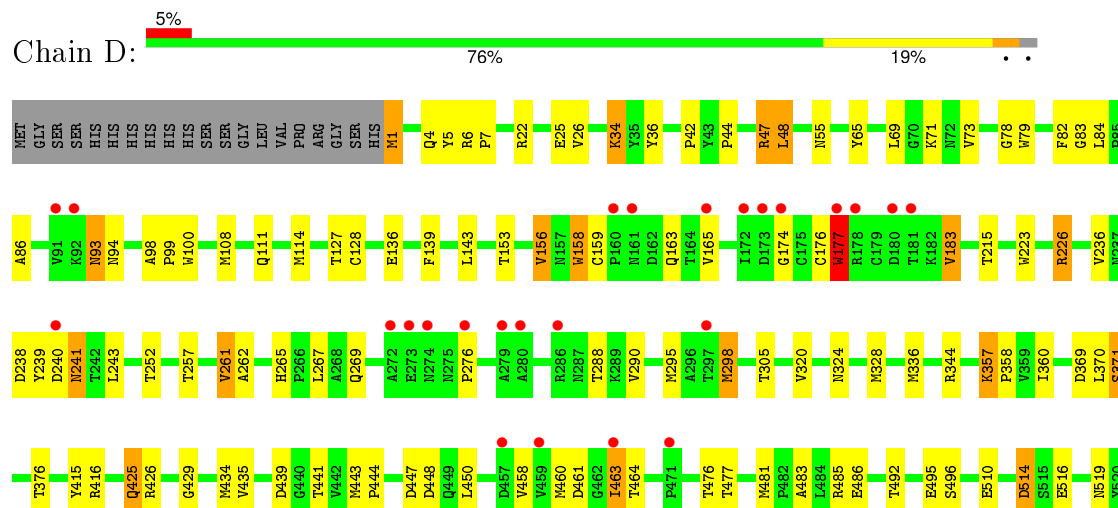
3 Residue-property plots

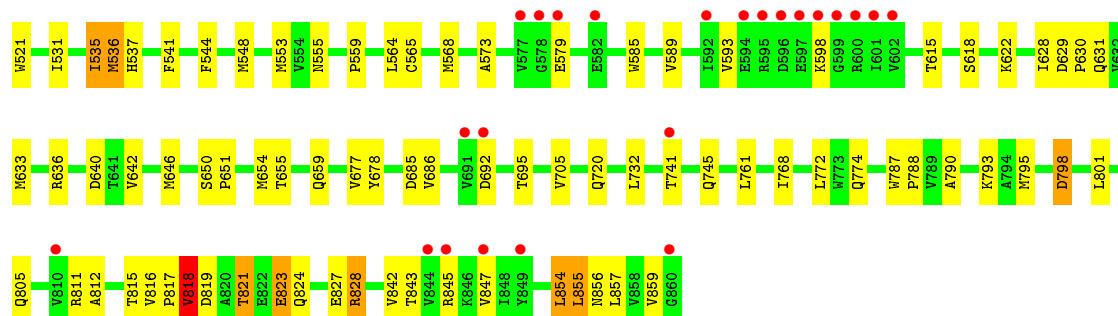
These plots are drawn for all protein, RNA and DNA chains in the entry. The first graphic for a chain summarises the proportions of errors displayed in the second graphic. The second graphic shows the sequence view annotated by issues in geometry and electron density. Residues are color-coded according to the number of geometric quality criteria for which they contain at least one outlier: green = 0, yellow = 1, orange = 2 and red = 3 or more. A red dot above a residue indicates a poor fit to the electron density ($\text{RSRZ} > 2$). Stretches of 2 or more consecutive residues without any outlier are shown as a green connector. Residues present in the sample, but not in the model, are shown in grey.

• Molecule 1: LEUCINE-TRNA LIGASE

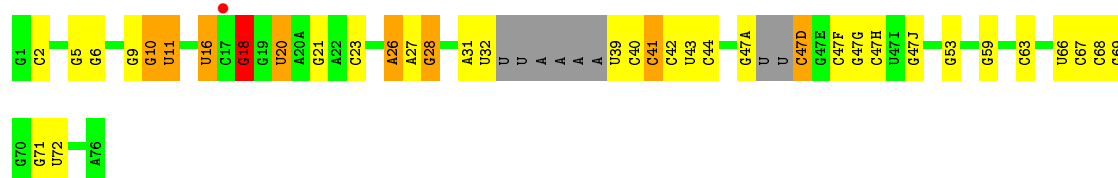


• Molecule 1: LEUCINE-TRNA LIGASE

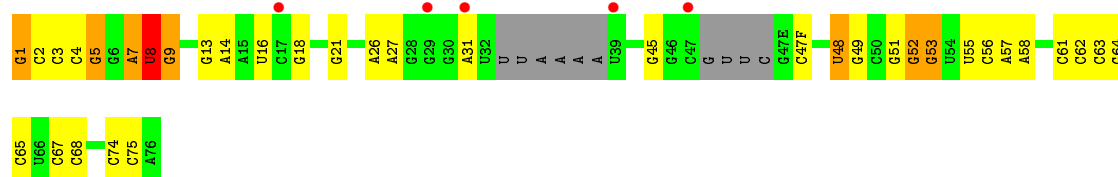




• Molecule 2: E. COLI TRNALEU UAA ISOACCEPTOR



• Molecule 2: E. COLI TRNALEU UAA ISOACCEPTOR



4 Data and refinement statistics

Property	Value	Source
Space group	C 1 2 1	Depositor
Cell constants a, b, c, α , β , γ	158.66Å 69.20Å 228.84Å 90.00° 104.35° 90.00°	Depositor
Resolution (Å)	39.69 – 2.50 39.46 – 2.50	Depositor EDS
% Data completeness (in resolution range)	90.3 (39.69-2.50) 90.4 (39.46-2.50)	Depositor EDS
R_{merge}	0.08	Depositor
R_{sym}	(Not available)	Depositor
$\langle I/\sigma(I) \rangle$ ¹	2.11 (at 2.51Å)	Xtriage
Refinement program	REFMAC 5.6.0116	Depositor
R, R_{free}	0.188 , 0.250 0.189 , 0.250	Depositor DCC
R_{free} test set	3826 reflections (5.32%)	DCC
Wilson B-factor (Å ²)	50.5	Xtriage
Anisotropy	0.052	Xtriage
Bulk solvent k_{sol} (e/Å ³), B_{sol} (Å ²)	0.33 , 42.2	EDS
Estimated twinning fraction	No twinning to report.	Xtriage
L-test for twinning ²	$\langle L \rangle = 0.46$, $\langle L^2 \rangle = 0.29$	Xtriage
Outliers	0 of 75711 reflections	Xtriage
F_o, F_c correlation	0.95	EDS
Total number of atoms	17212	wwPDB-VP
Average B, all atoms (Å ²)	55.0	wwPDB-VP

Xtriage's analysis on translational NCS is as follows: *The largest off-origin peak in the Patterson function is 2.89% of the height of the origin peak. No significant pseudotranslation is detected.*

¹Intensities estimated from amplitudes.

²Theoretical values of $\langle |L| \rangle$, $\langle L^2 \rangle$ for acentric reflections are 0.5, 0.375 respectively for untwinned datasets, and 0.333, 0.2 for perfectly twinned datasets.

5 Model quality

5.1 Standard geometry

Bond lengths and bond angles in the following residue types are not validated in this section: ZN, LMS, MG

The Z score for a bond length (or angle) is the number of standard deviations the observed value is removed from the expected value. A bond length (or angle) with $|Z| > 5$ is considered an outlier worth inspection. RMSZ is the root-mean-square of all Z scores of the bond lengths (or angles).

Mol	Chain	Bond lengths		Bond angles	
		RMSZ	# Z >5	RMSZ	# Z >5
1	A	0.90	5/6996 (0.1%)	0.93	14/9497 (0.1%)
1	D	0.76	3/6996 (0.0%)	0.82	3/9497 (0.0%)
2	B	0.59	0/1869	1.17	24/2908 (0.8%)
2	E	0.45	0/1821	0.96	10/2833 (0.4%)
All	All	0.78	8/17682 (0.0%)	0.92	51/24735 (0.2%)

All (8) bond length outliers are listed below:

Mol	Chain	Res	Type	Atoms	Z	Observed(Å)	Ideal(Å)
1	A	75	GLN	CD-OE1	6.79	1.38	1.24
1	A	191	TRP	CD2-CE2	6.01	1.48	1.41
1	A	420	TRP	CD2-CE2	5.62	1.48	1.41
1	A	507	GLN	CD-OE1	5.51	1.36	1.24
1	D	158	TRP	CD2-CE2	5.36	1.47	1.41
1	D	585	TRP	CD2-CE2	5.33	1.47	1.41
1	A	205	ASP	CB-CG	5.15	1.62	1.51
1	D	177	TRP	CD2-CE2	5.06	1.47	1.41

All (51) bond angle outliers are listed below:

Mol	Chain	Res	Type	Atoms	Z	Observed(°)	Ideal(°)
2	B	47(D)	C	P-O3'-C3'	10.76	132.62	119.70
2	B	72	U	O5'-P-OP1	-9.61	97.05	105.70
2	B	69	G	O5'-P-OP1	-8.66	97.91	105.70
2	B	68	C	OP1-P-O3'	8.00	122.79	105.20
2	B	6	G	O5'-P-OP1	7.93	120.22	110.70
2	B	21	G	P-O3'-C3'	7.63	128.85	119.70
2	E	4	C	O5'-P-OP1	-7.44	99.00	105.70
1	A	426	ARG	NE-CZ-NH1	7.23	123.92	120.30
1	A	643	ARG	NE-CZ-NH2	-7.21	116.69	120.30

Continued on next page...

Continued from previous page...

Mol	Chain	Res	Type	Atoms	Z	Observed(°)	Ideal(°)
2	B	71	G	O5'-P-OP1	-7.07	99.34	105.70
2	B	59	G	P-O3'-C3'	6.91	127.99	119.70
1	A	205	ASP	CB-CG-OD1	6.78	124.41	118.30
2	B	40	C	O3'-P-O5'	-6.69	91.28	104.00
2	B	53	G	O5'-P-OP1	-6.47	99.88	105.70
2	E	48	U	P-O3'-C3'	6.00	126.90	119.70
2	B	63	C	OP1-P-O3'	5.99	118.37	105.20
2	B	18	G	O3'-P-O5'	-5.98	92.65	104.00
2	E	5	G	O5'-P-OP1	-5.96	100.33	105.70
1	A	643	ARG	NE-CZ-NH1	5.95	123.27	120.30
1	A	668	ARG	NE-CZ-NH1	5.92	123.26	120.30
2	B	28	G	P-O3'-C3'	5.86	126.73	119.70
2	B	23	C	OP2-P-O3'	5.82	118.01	105.20
2	E	3	C	O5'-P-OP1	-5.82	100.46	105.70
1	A	80	ASP	CB-CG-OD1	5.77	123.50	118.30
2	B	47(J)	G	O5'-P-OP1	-5.74	100.53	105.70
2	E	7	A	P-O3'-C3'	5.67	126.50	119.70
1	D	636	ARG	NE-CZ-NH1	5.66	123.13	120.30
1	A	522	LEU	CB-CG-CD1	-5.66	101.38	111.00
2	B	16	U	P-O3'-C3'	5.63	126.46	119.70
2	E	4	C	P-O3'-C3'	-5.60	112.98	119.70
2	B	20	U	O5'-P-OP1	-5.58	100.67	105.70
2	B	5	G	OP2-P-O3'	-5.53	93.03	105.20
1	A	828	ARG	NE-CZ-NH1	5.41	123.00	120.30
1	A	80	ASP	CB-CG-OD2	-5.38	113.46	118.30
1	A	485	ARG	NE-CZ-NH2	-5.37	117.61	120.30
2	B	41	C	P-O3'-C3'	5.22	125.97	119.70
2	E	53	G	P-O3'-C3'	5.21	125.95	119.70
1	D	48	LEU	CB-CG-CD1	-5.15	102.25	111.00
1	A	491	ASP	CB-CG-OD1	5.13	122.92	118.30
2	B	26	A	O5'-P-OP1	-5.13	101.08	105.70
2	E	8	U	O3'-P-O5'	-5.11	94.29	104.00
2	B	27	A	O5'-P-OP1	-5.11	101.11	105.70
2	B	39	U	OP2-P-O3'	5.10	116.41	105.20
1	A	185	ARG	NE-CZ-NH1	5.08	122.84	120.30
2	E	58	A	P-O3'-C3'	-5.07	113.61	119.70
1	A	54	ARG	NE-CZ-NH2	-5.07	117.77	120.30
2	B	18	G	OP1-P-O3'	5.07	116.35	105.20
2	B	2	C	OP1-P-O3'	5.04	116.30	105.20
1	A	488	ASP	CB-CG-OD1	5.04	122.84	118.30
1	D	640	ASP	CB-CG-OD1	5.03	122.82	118.30
2	E	1	G	P-O3'-C3'	5.01	125.72	119.70

There are no chirality outliers.

There are no planarity outliers.

5.2 Too-close contacts

In the following table, the Non-H and H(model) columns list the number of non-hydrogen atoms and hydrogen atoms in the chain respectively. The H(added) column lists the number of hydrogen atoms added and optimized by MolProbity. The Clashes column lists the number of clashes within the asymmetric unit, whereas Symm-Clashes lists symmetry related clashes.

Mol	Chain	Non-H	H(model)	H(added)	Clashes	Symm-Clashes
1	A	6835	0	6687	119	0
1	D	6835	0	6687	110	0
2	B	1675	0	847	12	0
2	E	1632	0	825	15	0
3	A	1	0	0	0	0
3	D	1	0	0	0	0
4	A	23	0	13	0	0
4	D	23	0	13	0	0
5	A	8	0	10	1	0
5	D	8	0	10	0	0
6	B	1	0	0	0	0
6	E	1	0	0	0	0
7	A	104	0	0	9	0
7	B	15	0	0	1	0
7	D	47	0	0	6	0
7	E	3	0	0	1	0
All	All	17212	0	15092	247	0

The all-atom clashscore is defined as the number of clashes found per 1000 atoms (including hydrogen atoms). The all-atom clashscore for this structure is 8.

All (247) close contacts within the same asymmetric unit are listed below, sorted by their clash magnitude.

Atom-1	Atom-2	Interatomic distance (Å)	Clash overlap (Å)
1:A:1:MET:HE1	1:A:678:TYR:HA	1.13	1.10
1:A:288:THR:HG23	1:A:295:MET:HE3	1.45	0.97
1:A:1:MET:HE1	1:A:678:TYR:CA	1.96	0.96
1:D:223:TRP:CE3	1:D:535:ILE:HD13	2.04	0.91
1:D:463:ILE:HG22	1:D:464:THR:HG23	1.54	0.90
1:D:267:LEU:HD23	1:D:267:LEU:O	1.79	0.83
1:A:360:ILE:HD13	1:A:381:LEU:HD23	1.60	0.82

Continued on next page...

Continued from previous page...

Atom-1	Atom-2	Interatomic distance (Å)	Clash overlap (Å)
1:D:262:ALA:HB3	1:D:328:MET:HE2	1.59	0.82
1:D:223:TRP:CD2	1:D:535:ILE:HD13	2.14	0.82
1:A:288:THR:HG23	1:A:295:MET:CE	2.11	0.81
1:D:842:VAL:HG21	1:D:859:VAL:HG22	1.63	0.80
1:D:447:ASP:HA	1:D:450:LEU:HD12	1.64	0.79
1:A:729:ILE:HD13	1:A:761:LEU:HD13	1.66	0.78
1:A:694:LEU:HD22	1:A:698:GLN:HB3	1.69	0.74
1:D:262:ALA:HB3	1:D:328:MET:CE	2.16	0.74
1:A:154:SER:HB3	1:A:190:GLN:HE21	1.51	0.74
1:D:548:MET:HA	1:D:553:MET:HE3	1.70	0.73
1:D:98:ALA:HB3	1:D:99:PRO:HD3	1.69	0.73
1:D:535:ILE:HG22	1:D:536:MET:N	2.04	0.73
1:A:265:HIS:HB2	1:A:328:MET:HE1	1.71	0.72
1:D:223:TRP:CE3	1:D:535:ILE:CD1	2.73	0.71
1:A:813:LYS:CE	2:B:20:U:O2	2.39	0.71
1:D:573:ALA:HB3	1:D:615:THR:OG1	1.91	0.69
1:A:267:LEU:HD21	1:A:305:THR:HG21	1.75	0.69
1:D:226:ARG:HG3	1:D:415:TYR:CE1	2.28	0.68
1:D:265:HIS:HB2	1:D:328:MET:HE1	1.75	0.68
1:A:553:MET:HE1	7:A:2030:HOH:O	1.91	0.68
1:A:1:MET:HE3	1:A:678:TYR:HD2	1.60	0.67
1:A:305:THR:HB	1:A:320:VAL:O	1.95	0.66
1:A:161:ASN:OD1	1:A:181:THR:HG21	1.95	0.65
1:A:272:ALA:CA	1:A:278:LEU:HD23	2.27	0.65
1:A:32:LYS:NZ	7:A:2013:HOH:O	2.29	0.65
1:A:813:LYS:HE2	2:B:20:U:O2	1.97	0.64
1:D:842:VAL:HG21	1:D:859:VAL:CG2	2.27	0.64
1:D:71:LYS:O	1:D:73:VAL:HG23	1.98	0.64
1:D:486:GLU:HA	1:D:486:GLU:OE1	1.98	0.64
1:D:677:VAL:HG11	1:D:772:LEU:HD22	1.79	0.64
1:A:366:SER:HB3	7:A:2058:HOH:O	1.97	0.63
1:A:589:VAL:HG12	1:A:589:VAL:O	1.98	0.63
1:A:55:ASN:C	1:A:55:ASN:HD22	2.01	0.63
1:A:136:GLU:OE2	1:A:495:GLU:OE2	2.16	0.62
1:A:265:HIS:CB	1:A:328:MET:HE1	2.28	0.62
1:A:726:ILE:HG22	1:A:730:MET:HE3	1.81	0.62
1:A:358:PRO:HB3	1:A:370:LEU:HD11	1.81	0.62
1:A:98:ALA:HB3	1:A:99:PRO:HD3	1.83	0.61
1:D:790:ALA:HB1	1:D:795:MET:CE	2.31	0.61
1:A:842:VAL:HG21	1:A:859:VAL:HG11	1.82	0.61
1:A:1:MET:HE3	1:A:678:TYR:CD2	2.35	0.61

Continued on next page...

Continued from previous page...

Atom-1	Atom-2	Interatomic distance (Å)	Clash overlap (Å)
1:A:305:THR:HG22	1:A:307:PHE:H	1.65	0.61
1:A:596:ASP:HB2	1:A:600:ARG:O	2.01	0.61
1:A:223:TRP:CD2	1:A:535:ILE:HG21	2.35	0.61
1:A:55:ASN:HB2	1:A:566:GLN:NE2	2.17	0.60
1:D:111:GLN:NE2	1:D:629:ASP:OD1	2.34	0.60
1:D:633:MET:HE2	1:D:642:VAL:HG13	1.83	0.60
1:D:548:MET:HA	1:D:553:MET:CE	2.32	0.59
1:A:741:THR:N	1:A:742:ASP:OD1	2.35	0.59
1:A:176:CYS:SG	1:A:177:TRP:N	2.75	0.59
1:A:813:LYS:NZ	2:B:20:U:O2	2.35	0.59
1:D:174:GLY:O	1:D:183:VAL:HG21	2.02	0.59
1:D:811:ARG:O	1:D:812:ALA:HB2	2.04	0.58
1:A:816:VAL:O	1:A:817:PRO:C	2.42	0.58
1:A:629:ASP:OD1	1:A:630:PRO:HD2	2.04	0.58
1:D:426:ARG:NH2	2:E:74:C:O2	2.35	0.58
1:A:272:ALA:N	1:A:278:LEU:HD23	2.19	0.57
1:A:156:VAL:HG13	1:A:165:VAL:HG13	1.85	0.57
1:D:790:ALA:HB1	1:D:795:MET:HE2	1.86	0.57
1:D:805:GLN:OE1	1:D:854:LEU:HD11	2.05	0.57
1:D:305:THR:HG23	1:D:320:VAL:O	2.05	0.57
1:D:847:VAL:HG22	1:D:857:LEU:HD23	1.87	0.57
1:D:741:THR:HG22	1:D:741:THR:O	2.05	0.56
1:D:288:THR:HB	1:D:298:MET:HE3	1.86	0.56
1:A:1:MET:HE1	1:A:678:TYR:CB	2.35	0.56
1:D:774:GLN:HG2	7:D:2046:HOH:O	2.05	0.56
1:A:295:MET:HE2	1:A:298:MET:SD	2.45	0.55
1:D:165:VAL:HG21	1:D:425:GLN:HG3	1.87	0.55
1:D:288:THR:HG21	1:D:324:ASN:HB2	1.88	0.55
1:A:359:VAL:O	1:A:381:LEU:HD23	2.06	0.55
1:D:435:VAL:HG13	1:D:483:ALA:HB1	1.89	0.55
2:B:18:G:H5"	7:B:2005:HOH:O	2.07	0.55
1:D:252:THR:HG22	1:D:360:ILE:HD11	1.88	0.55
1:A:366:SER:OG	1:A:367:GLU:N	2.39	0.55
1:D:139:PHE:HE1	1:D:553:MET:CE	2.20	0.54
1:A:98:ALA:HB3	1:A:99:PRO:CD	2.38	0.54
1:A:803:VAL:CG1	1:A:810:VAL:HG22	2.37	0.54
2:E:53:G:N2	2:E:62:C:C2	2.75	0.54
1:A:543:PHE:CZ	1:A:547:LEU:HD11	2.42	0.54
1:A:361:LEU:HD13	1:A:365:GLY:O	2.08	0.54
1:A:84:LEU:HD22	7:A:2023:HOH:O	2.08	0.54
1:A:47:ARG:NH1	1:D:579:GLU:OE2	2.38	0.53

Continued on next page...

Continued from previous page...

Atom-1	Atom-2	Interatomic distance (Å)	Clash overlap (Å)
1:A:262:ALA:HB3	1:A:328:MET:CE	2.38	0.53
1:A:368:PRO:HB3	1:A:375:LEU:HD22	1.90	0.53
1:A:526:ILE:HD12	1:A:562:GLN:HG2	1.90	0.53
1:D:5:TYR:CE1	1:D:768:ILE:HD12	2.44	0.53
2:E:53:G:C2	2:E:62:C:N3	2.77	0.53
1:A:272:ALA:HA	1:A:278:LEU:HD23	1.91	0.52
1:A:464:THR:HG22	1:A:465:SER:N	2.24	0.52
1:D:817:PRO:O	1:D:818:VAL:C	2.48	0.52
1:D:156:VAL:HG13	1:D:165:VAL:HG13	1.91	0.52
1:A:358:PRO:HB3	1:A:370:LEU:CD1	2.38	0.52
1:D:1:MET:N	7:D:2001:HOH:O	2.32	0.52
1:A:690:ASN:O	1:A:691:VAL:C	2.47	0.52
1:D:82:PHE:CG	1:D:429:GLY:HA2	2.45	0.52
1:A:360:ILE:HD13	1:A:381:LEU:CD2	2.36	0.51
1:D:434:MET:HE1	1:D:444:PRO:HB3	1.91	0.51
1:A:801:LEU:HD23	1:A:801:LEU:C	2.30	0.51
1:D:369:ASP:OD1	1:D:371:SER:OG	2.28	0.51
2:B:47(D):C:O2	2:B:47(D):C:O4'	2.27	0.51
1:D:4:GLN:HB2	7:D:2002:HOH:O	2.11	0.51
1:A:608:ALA:HB1	1:D:93:ASN:OD1	2.11	0.51
1:A:261:VAL:HG13	1:A:265:HIS:HB3	1.91	0.51
1:A:171:VAL:HG22	1:A:183:VAL:HG21	1.92	0.51
1:A:265:HIS:HB2	1:A:328:MET:CE	2.40	0.50
1:D:241:ASN:C	7:D:2024:HOH:O	2.48	0.50
1:D:541:PHE:CZ	1:D:559:PRO:HB2	2.46	0.50
1:A:135:TRP:CZ3	1:A:511:GLY:HA2	2.47	0.50
1:A:22:ARG:HD3	7:A:2009:HOH:O	2.10	0.50
1:A:305:THR:CG2	1:A:307:PHE:HD2	2.24	0.50
2:E:52:G:O6	2:E:62:C:N4	2.38	0.50
1:A:361:LEU:HD23	1:A:382:PHE:CD1	2.46	0.50
1:A:227:SER:OG	1:A:248:THR:CG2	2.59	0.50
1:A:267:LEU:CD2	1:A:305:THR:HG21	2.40	0.50
1:D:215:THR:HG22	2:E:5:G:H5'	1.94	0.50
1:D:139:PHE:HE1	1:D:553:MET:HE1	1.77	0.49
2:B:10:G:C2	2:B:11:U:C6	3.00	0.49
1:A:258:TYR:CZ	1:A:337:ALA:CB	2.95	0.49
1:A:422:VAL:HG11	1:A:494:MET:HE1	1.95	0.49
1:D:705:VAL:HG22	1:D:732:LEU:HD11	1.95	0.49
1:A:288:THR:CG2	1:A:295:MET:CE	2.86	0.49
1:A:67:ARG:NH1	1:A:784:ASN:OD1	2.46	0.49
1:D:564:LEU:HD22	1:D:720:GLN:HG2	1.94	0.49

Continued on next page...

Continued from previous page...

Atom-1	Atom-2	Interatomic distance (Å)	Clash overlap (Å)
1:A:298:MET:HG3	7:A:2056:HOH:O	2.13	0.48
2:E:67:C:H2'	2:E:68:C:O4'	2.13	0.48
1:D:139:PHE:CE1	1:D:553:MET:HE1	2.48	0.48
1:D:818:VAL:HG13	1:D:819:ASP:H	1.78	0.48
2:B:47(G):G:O2'	2:B:47(H):C:H5'	2.13	0.48
1:A:339:PRO:HB2	1:A:356:ILE:HG23	1.95	0.48
1:A:842:VAL:HB	1:A:859:VAL:HG13	1.95	0.48
1:A:223:TRP:CG	1:A:535:ILE:HG21	2.48	0.48
1:D:443:MET:HB2	1:D:444:PRO:HD2	1.94	0.48
1:A:402:LYS:O	1:A:405:ALA:HB3	2.13	0.48
2:E:55:U:H2'	2:E:57:A:OP1	2.13	0.48
1:A:773:TRP:HB2	1:A:782:ILE:HD12	1.94	0.48
1:D:257:THR:HG22	1:D:357:LYS:HD3	1.95	0.48
1:D:267:LEU:HD23	1:D:267:LEU:C	2.33	0.48
1:D:589:VAL:CG1	1:D:589:VAL:O	2.62	0.48
2:B:66:U:H2'	2:B:67:C:O4'	2.13	0.48
1:D:651:PRO:HG3	2:E:14:A:OP1	2.14	0.47
2:E:9:G:N3	2:E:9:G:H2'	2.29	0.47
1:D:65:TYR:CZ	1:D:69:LEU:HD11	2.49	0.47
1:A:265:HIS:CD2	1:A:328:MET:HE1	2.49	0.47
1:D:288:THR:CB	1:D:298:MET:HE3	2.44	0.47
1:D:798:ASP:N	1:D:798:ASP:OD1	2.34	0.47
1:A:135:TRP:CH2	1:A:511:GLY:HA2	2.50	0.47
1:D:114:MET:HE3	1:D:631:GLN:HE22	1.80	0.47
2:B:43:U:H2'	2:B:44:C:O4'	2.15	0.47
1:D:823:GLU:OE1	1:D:823:GLU:HA	2.14	0.47
1:D:855:LEU:HD12	1:D:856:ASN:N	2.30	0.47
1:D:358:PRO:HB3	1:D:370:LEU:HD11	1.96	0.47
1:A:57:THR:O	1:A:61:VAL:HG23	2.14	0.46
1:D:176:CYS:SG	1:D:177:TRP:N	2.87	0.46
1:A:842:VAL:HG21	1:A:859:VAL:CG1	2.46	0.46
2:E:26:A:H2'	2:E:27:A:O4'	2.14	0.46
1:A:55:ASN:HB2	1:A:566:GLN:HE22	1.80	0.46
1:D:174:GLY:O	1:D:183:VAL:CG2	2.63	0.46
1:A:271:ALA:HB2	1:A:307:PHE:CE2	2.50	0.46
1:D:439:ASP:HB3	1:D:441:THR:H	1.81	0.45
1:D:463:ILE:HG22	1:D:464:THR:N	2.31	0.45
1:A:59:GLY:HA2	1:A:528:ILE:HD13	1.96	0.45
1:D:22:ARG:NH1	1:D:25:GLU:OE2	2.49	0.45
2:B:31:A:H2'	2:B:32:U:O5'	2.16	0.45
1:D:79:TRP:O	1:D:127:THR:HG23	2.16	0.45

Continued on next page...

Continued from previous page...

Atom-1	Atom-2	Interatomic distance (Å)	Clash overlap (Å)
1:A:136:GLU:OE1	1:A:495:GLU:HG3	2.16	0.45
1:D:548:MET:HG2	1:D:553:MET:HE1	1.97	0.45
1:D:821:THR:HG23	1:D:824:GLN:OE1	2.17	0.45
1:A:95:THR:HG22	1:A:96:ALA:H	1.82	0.45
1:D:842:VAL:CG2	1:D:859:VAL:HG22	2.42	0.45
1:D:514:ASP:C	1:D:514:ASP:OD1	2.53	0.45
1:A:231:GLU:O	1:A:409:GLY:HA2	2.18	0.45
1:A:614:TYR:CZ	1:A:616:GLY:HA2	2.52	0.44
1:D:536:MET:O	1:D:537:HIS:C	2.54	0.44
1:A:290:VAL:O	1:A:291:ALA:HB2	2.18	0.44
1:D:519:ASN:OD1	1:D:555:ASN:HB2	2.18	0.44
1:D:136:GLU:OE1	1:D:495:GLU:HG3	2.18	0.44
1:D:531:ILE:N	1:D:568:MET:HE3	2.31	0.44
1:A:545:HIS:CE1	1:A:556:SER:HG	2.36	0.44
1:A:55:ASN:ND2	1:A:55:ASN:C	2.71	0.44
1:D:241:ASN:HB2	7:D:2024:HOH:O	2.17	0.44
1:D:439:ASP:CB	1:D:441:THR:H	2.31	0.44
1:D:47:ARG:HE	1:D:47:ARG:HB3	1.67	0.44
1:A:41:LEU:HG	1:A:80:ASP:HB2	2.00	0.43
1:D:236:VAL:HB	1:D:239:TYR:HB3	2.00	0.43
1:A:743:GLY:HA3	7:A:2097:HOH:O	2.18	0.43
1:A:589:VAL:O	1:A:589:VAL:CG1	2.65	0.43
1:D:787:TRP:CD2	1:D:788:PRO:HD2	2.53	0.43
1:D:83:GLY:HA2	1:D:492:THR:HG21	1.99	0.43
1:A:536:MET:HB2	7:A:2075:HOH:O	2.19	0.43
1:D:447:ASP:HA	1:D:450:LEU:CD1	2.40	0.43
1:A:821:THR:HG23	1:A:824:GLN:HG3	1.99	0.43
1:A:361:LEU:HD23	1:A:382:PHE:CE1	2.54	0.43
1:D:855:LEU:HD12	1:D:855:LEU:C	2.39	0.43
2:E:1:G:C6	2:E:2:C:C4	3.06	0.43
1:A:529:GLY:O	1:A:565:CYS:HA	2.18	0.43
1:D:158:TRP:CZ2	1:D:163:GLN:HA	2.54	0.43
1:A:361:LEU:CD2	1:A:382:PHE:CD1	3.02	0.42
1:D:136:GLU:OE2	1:D:495:GLU:OE2	2.36	0.42
1:A:6:ARG:O	1:A:10:ILE:HD12	2.18	0.42
1:A:359:VAL:O	1:A:381:LEU:CD2	2.68	0.42
1:D:261:VAL:HG22	1:D:265:HIS:CG	2.55	0.42
1:A:801:LEU:HD23	1:A:802:VAL:N	2.35	0.42
1:D:633:MET:CE	1:D:642:VAL:HG13	2.50	0.42
2:B:31:A:C2'	2:B:32:U:O5'	2.68	0.42
1:A:443:MET:HB2	1:A:444:PRO:CD	2.50	0.42

Continued on next page...

Continued from previous page...

Atom-1	Atom-2	Interatomic distance (Å)	Clash overlap (Å)
1:A:195:ILE:HG22	1:A:419:ASP:HA	2.01	0.42
1:D:828:ARG:HD3	1:D:828:ARG:O	2.20	0.42
1:A:327:LEU:CD1	1:A:330:TYR:HE2	2.33	0.42
1:A:729:ILE:CD1	1:A:761:LEU:HD13	2.42	0.42
1:A:80:ASP:OD2	5:A:902:LEU:N	2.52	0.41
1:D:6:ARG:HA	1:D:7:PRO:HD3	1.91	0.41
1:D:1:MET:HE1	1:D:678:TYR:HA	2.02	0.41
1:D:86:ALA:HA	1:D:100:TRP:CZ3	2.55	0.41
2:E:57:A:P	7:E:2003:HOH:O	2.78	0.41
1:A:485:ARG:HB2	7:A:2066:HOH:O	2.18	0.41
1:D:82:PHE:CE2	1:D:128:CYS:HA	2.56	0.41
1:D:44:PRO:HA	1:D:108:MET:SD	2.61	0.41
1:D:476:THR:OG1	1:D:477:THR:N	2.54	0.41
1:D:290:VAL:N	7:D:2018:HOH:O	2.29	0.41
1:A:601:ILE:HD12	1:A:614:TYR:CE1	2.55	0.41
1:D:34:LYS:NZ	1:D:521:TRP:O	2.42	0.41
1:A:729:ILE:CD1	1:A:761:LEU:CD1	2.98	0.41
1:D:26:VAL:HG11	1:D:73:VAL:O	2.21	0.41
1:D:531:ILE:HG13	1:D:531:ILE:O	2.21	0.41
2:B:10:G:C6	2:B:26:A:C2	3.09	0.41
1:A:328:MET:HA	1:A:328:MET:HE2	2.03	0.41
1:A:787:TRP:CD2	1:A:788:PRO:HD2	2.56	0.41
2:E:7:A:H3'	2:E:8:U:H5'	2.03	0.41
2:E:7:A:C3'	2:E:8:U:H5'	2.51	0.41
1:A:35:TYR:O	1:A:73:VAL:HA	2.21	0.41
1:A:98:ALA:N	1:A:99:PRO:HD2	2.36	0.41
1:D:84:LEU:HD23	1:D:426:ARG:HD3	2.03	0.41
2:E:8:U:H2'	2:E:21:G:N2	2.36	0.41
1:A:538:LEU:HA	1:A:538:LEU:HD23	1.87	0.41
1:D:629:ASP:OD1	1:D:630:PRO:HD2	2.21	0.40
1:A:608:ALA:HB2	1:D:93:ASN:HD21	1.86	0.40
1:A:258:TYR:CE1	1:A:337:ALA:CB	3.04	0.40
1:D:633:MET:HE2	1:D:642:VAL:HG22	2.03	0.40
1:D:42:PRO:HD2	1:D:78:GLY:O	2.20	0.40
1:A:84:LEU:N	1:A:85:PRO:CD	2.84	0.40

There are no symmetry-related clashes.

5.3 Torsion angles [i](#)

5.3.1 Protein backbone [i](#)

In the following table, the Percentiles column shows the percent Ramachandran outliers of the chain as a percentile score with respect to all X-ray entries followed by that with respect to entries of similar resolution.

The Analysed column shows the number of residues for which the backbone conformation was analysed, and the total number of residues.

Mol	Chain	Analysed	Favoured	Allowed	Outliers	Percentiles	
1	A	858/880 (98%)	808 (94%)	44 (5%)	6 (1%)	26	46
1	D	858/880 (98%)	802 (94%)	47 (6%)	9 (1%)	19	34
All	All	1716/1760 (98%)	1610 (94%)	91 (5%)	15 (1%)	21	37

All (15) Ramachandran outliers are listed below:

Mol	Chain	Res	Type
1	A	463	ILE
1	D	463	ILE
1	A	293	ALA
1	A	536	MET
1	D	240	ASP
1	D	460	MET
1	D	818	VAL
1	A	291	ALA
1	D	93	ASN
1	D	536	MET
1	A	298	MET
1	D	94	ASN
1	D	276	PRO
1	A	851	PRO
1	D	535	ILE

5.3.2 Protein sidechains [i](#)

In the following table, the Percentiles column shows the percent sidechain outliers of the chain as a percentile score with respect to all X-ray entries followed by that with respect to entries of similar resolution.

The Analysed column shows the number of residues for which the sidechain conformation was analysed, and the total number of residues.

Mol	Chain	Analysed	Rotameric	Outliers	Percentiles	
1	A	724/741 (98%)	680 (94%)	44 (6%)	23	42
1	D	724/741 (98%)	656 (91%)	68 (9%)	11	20
All	All	1448/1482 (98%)	1336 (92%)	112 (8%)	16	30

All (112) residues with a non-rotameric sidechain are listed below:

Mol	Chain	Res	Type
1	A	1	MET
1	A	13	LYS
1	A	34	LYS
1	A	36	TYR
1	A	55	ASN
1	A	84	LEU
1	A	95	THR
1	A	143	LEU
1	A	169	GLU
1	A	177	TRP
1	A	181	THR
1	A	188	ILE
1	A	243	LEU
1	A	248	THR
1	A	261	VAL
1	A	288	THR
1	A	297	THR
1	A	298	MET
1	A	299	GLU
1	A	330	TYR
1	A	342	ASP
1	A	376	THR
1	A	425	GLN
1	A	435	VAL
1	A	477	THR
1	A	516	GLU
1	A	526	ILE
1	A	544	PHE
1	A	582	GLU
1	A	587	SER
1	A	636	ARG
1	A	650	SER
1	A	661	SER
1	A	663	VAL
1	A	664	GLU

Continued on next page...

Continued from previous page...

Mol	Chain	Res	Type
1	A	683	LYS
1	A	695	THR
1	A	731	GLU
1	A	761	LEU
1	A	779	GLU
1	A	798	ASP
1	A	821	THR
1	A	827	GLU
1	A	840	ASP
1	D	1	MET
1	D	34	LYS
1	D	36	TYR
1	D	47	ARG
1	D	48	LEU
1	D	55	ASN
1	D	143	LEU
1	D	153	THR
1	D	156	VAL
1	D	159	CYS
1	D	177	TRP
1	D	183	VAL
1	D	226	ARG
1	D	238	ASP
1	D	241	ASN
1	D	243	LEU
1	D	261	VAL
1	D	269	GLN
1	D	295	MET
1	D	298	MET
1	D	336	MET
1	D	344	ARG
1	D	357	LYS
1	D	371	SER
1	D	376	THR
1	D	416	ARG
1	D	425	GLN
1	D	448	ASP
1	D	458	VAL
1	D	461	ASP
1	D	481	MET
1	D	485	ARG
1	D	496	SER

Continued on next page...

Continued from previous page...

Mol	Chain	Res	Type
1	D	510	GLU
1	D	514	ASP
1	D	516	GLU
1	D	544	PHE
1	D	565	CYS
1	D	593	VAL
1	D	598	LYS
1	D	618	SER
1	D	622	LYS
1	D	628	ILE
1	D	646	MET
1	D	650	SER
1	D	654	MET
1	D	655	THR
1	D	659	GLN
1	D	685	ASP
1	D	686	VAL
1	D	692	ASP
1	D	695	THR
1	D	745	GLN
1	D	761	LEU
1	D	793	LYS
1	D	798	ASP
1	D	801	LEU
1	D	815	THR
1	D	816	VAL
1	D	818	VAL
1	D	821	THR
1	D	823	GLU
1	D	827	GLU
1	D	828	ARG
1	D	843	THR
1	D	845	ARG
1	D	854	LEU
1	D	855	LEU

Some sidechains can be flipped to improve hydrogen bonding and reduce clashes. All (3) such sidechains are listed below:

Mol	Chain	Res	Type
1	A	566	GLN
1	D	161	ASN
1	D	631	GLN

5.3.3 RNA ⓘ

Mol	Chain	Analysed	Backbone Outliers	Pucker Outliers
2	B	75/87 (86%)	10 (13%)	0
2	E	73/87 (83%)	17 (23%)	1 (1%)
All	All	148/174 (85%)	27 (18%)	1 (0%)

All (27) RNA backbone outliers are listed below:

Mol	Chain	Res	Type
2	B	9	G
2	B	10	G
2	B	11	U
2	B	16	U
2	B	18	G
2	B	28	G
2	B	41	C
2	B	42	C
2	B	47(A)	G
2	B	47(F)	C
2	E	8	U
2	E	9	G
2	E	13	G
2	E	16	U
2	E	18	G
2	E	31	A
2	E	45	G
2	E	47(F)	C
2	E	48	U
2	E	49	G
2	E	51	G
2	E	52	G
2	E	56	C
2	E	61	C
2	E	63	C
2	E	65	C
2	E	75	C

All (1) RNA pucker outliers are listed below:

Mol	Chain	Res	Type
2	E	64	G

5.4 Non-standard residues in protein, DNA, RNA chains [i](#)

There are no non-standard protein/DNA/RNA residues in this entry.

5.5 Carbohydrates [i](#)

There are no carbohydrates in this entry.

5.6 Ligand geometry [i](#)

Of 8 ligands modelled in this entry, 4 are monoatomic - leaving 4 for Mogul analysis.

In the following table, the Counts columns list the number of bonds (or angles) for which Mogul statistics could be retrieved, the number of bonds (or angles) that are observed in the model and the number of bonds (or angles) that are defined in the chemical component dictionary. The Link column lists molecule types, if any, to which the group is linked. The Z score for a bond length (or angle) is the number of standard deviations the observed value is removed from the expected value. A bond length (or angle) with $|Z| > 2$ is considered an outlier worth inspection. RMSZ is the root-mean-square of all Z scores of the bond lengths (or angles).

Mol	Type	Chain	Res	Link	Bond lengths			Bond angles		
					Counts	RMSZ	# $ Z > 2$	Counts	RMSZ	# $ Z > 2$
4	LMS	A	901	5	20,25,25	2.54	5 (25%)	22,38,38	3.19	6 (27%)
5	LEU	A	902	4	6,7,8	0.78	0	6,8,10	1.03	1 (16%)
4	LMS	D	901	5	20,25,25	2.57	4 (20%)	22,38,38	3.18	8 (36%)
5	LEU	D	902	4	6,7,8	0.40	0	6,8,10	1.18	1 (16%)

In the following table, the Chirals column lists the number of chiral outliers, the number of chiral centers analysed, the number of these observed in the model and the number defined in the chemical component dictionary. Similar counts are reported in the Torsion and Rings columns. '-' means no outliers of that kind were identified.

Mol	Type	Chain	Res	Link	Chirals	Torsions	Rings
4	LMS	A	901	5	-	0/6/26/26	0/3/3/3
5	LEU	A	902	4	-	0/4/6/8	0/0/0/0
4	LMS	D	901	5	-	0/6/26/26	0/3/3/3
5	LEU	D	902	4	-	0/4/6/8	0/0/0/0

All (9) bond length outliers are listed below:

Mol	Chain	Res	Type	Atoms	Z	Observed(Å)	Ideal(Å)
4	D	901	LMS	S-N	-4.99	1.53	1.58
4	A	901	LMS	S-N	-3.52	1.55	1.58

Continued on next page...

Continued from previous page...

Mol	Chain	Res	Type	Atoms	Z	Observed(Å)	Ideal(Å)
4	D	901	LMS	O5'-S	-3.03	1.53	1.57
4	A	901	LMS	C5-N7	-2.32	1.31	1.39
4	A	901	LMS	O5'-S	-2.20	1.54	1.57
4	A	901	LMS	O1P-S	4.36	1.45	1.42
4	D	901	LMS	O2P-S	5.22	1.46	1.42
4	D	901	LMS	O1P-S	7.90	1.48	1.42
4	A	901	LMS	O2P-S	8.81	1.49	1.42

All (16) bond angle outliers are listed below:

Mol	Chain	Res	Type	Atoms	Z	Observed(°)	Ideal(°)
4	A	901	LMS	N3-C2-N1	-10.41	120.93	128.89
4	D	901	LMS	O2P-S-O1P	-9.95	111.07	119.98
4	D	901	LMS	N3-C2-N1	-7.74	122.97	128.89
4	A	901	LMS	O2P-S-O1P	-7.65	113.13	119.98
4	D	901	LMS	O1P-S-N	-4.56	102.32	109.13
4	A	901	LMS	C2'-C1'-N9	-3.47	108.99	114.29
4	D	901	LMS	C2'-C1'-N9	-2.69	110.18	114.29
4	D	901	LMS	C4-C5-N7	-2.51	107.17	109.48
5	A	902	LEU	O-C-CA	-2.27	119.58	125.49
4	D	901	LMS	C1'-N9-C4	-2.17	123.66	126.94
4	A	901	LMS	O3'-C3'-C2'	-2.14	104.86	111.83
5	D	902	LEU	O-C-CA	-2.08	120.07	125.49
4	D	901	LMS	C4'-O4'-C1'	2.25	112.19	109.72
4	D	901	LMS	O2P-S-N	3.01	113.63	109.13
4	A	901	LMS	O2P-S-N	3.36	114.15	109.13
4	A	901	LMS	C4'-O4'-C1'	3.73	113.82	109.72

There are no chirality outliers.

There are no torsion outliers.

There are no ring outliers.

1 monomer is involved in 1 short contact:

Mol	Chain	Res	Type	Clashes	Symm-Clashes
5	A	902	LEU	1	0

5.7 Other polymers ⓘ

There are no such residues in this entry.

5.8 Polymer linkage issues ⓘ

There are no chain breaks in this entry.

6 Fit of model and data

6.1 Protein, DNA and RNA chains

In the following table, the column labelled ‘#RSRZ> 2’ contains the number (and percentage) of RSRZ outliers, followed by percent RSRZ outliers for the chain as percentile scores relative to all X-ray entries and entries of similar resolution. The OWAB column contains the minimum, median, 95th percentile and maximum values of the occupancy-weighted average B-factor per residue. The column labelled ‘Q< 0.9’ lists the number of (and percentage) of residues with an average occupancy less than 0.9.

Mol	Chain	Analysed	<RSRZ>	#RSRZ>2	OWAB(Å ²)	Q<0.9
1	A	860/880 (97%)	0.04	23 (2%) 58 62	20, 43, 80, 132	0
1	D	860/880 (97%)	0.41	48 (5%) 28 31	33, 59, 102, 165	0
2	B	79/87 (90%)	-0.43	1 (1%) 79 82	24, 45, 98, 122	0
2	E	77/87 (88%)	0.16	5 (6%) 22 25	40, 72, 111, 141	0
All	All	1876/1934 (97%)	0.20	77 (4%) 41 46	20, 51, 99, 165	0

All (77) RSRZ outliers are listed below:

Mol	Chain	Res	Type	RSRZ
1	D	860	GLY	7.3
1	D	597	GLU	6.8
1	D	180	ASP	6.3
1	D	600	ARG	6.3
1	D	602	VAL	5.9
1	D	272	ALA	5.9
1	D	463	ILE	5.8
1	D	601	ILE	5.6
1	A	860	GLY	4.9
1	D	599	GLY	4.7
1	D	274	ASN	4.2
1	A	597	GLU	4.1
1	A	173	ASP	4.1
1	A	180	ASP	4.0
1	D	273	GLU	3.9
1	D	276	PRO	3.9
1	A	598	LYS	3.8
2	B	17	C	3.8
1	A	178	ARG	3.8
1	D	595	ARG	3.7
1	D	173	ASP	3.7

Continued on next page...

Continued from previous page...

Mol	Chain	Res	Type	RSRZ
1	D	240	ASP	3.7
1	D	279	ALA	3.5
1	A	463	ILE	3.4
1	D	577	VAL	3.4
2	E	31	A	3.3
1	A	177	TRP	3.2
1	D	177	TRP	3.2
1	A	181	THR	3.2
1	A	580	ASN	3.2
1	A	161	ASN	3.2
1	D	596	ASP	3.2
1	D	692	ASP	3.1
1	D	172	ILE	3.1
1	D	181	THR	3.0
1	A	741	THR	2.9
1	D	594	GLU	2.8
1	D	459	VAL	2.8
1	D	592	ILE	2.8
1	D	178	ARG	2.8
1	A	579	GLU	2.7
2	E	47	C	2.7
1	D	598	LYS	2.6
1	D	578	GLY	2.6
1	D	174	GLY	2.5
1	A	691	VAL	2.5
1	D	691	VAL	2.5
1	D	161	ASN	2.4
1	D	286	ARG	2.4
1	D	160	PRO	2.4
1	A	174	GLY	2.4
1	D	579	GLU	2.4
1	D	582	GLU	2.4
1	A	163	GLN	2.4
2	E	17	C	2.3
1	D	845	ARG	2.3
1	D	471	PRO	2.3
1	D	741	THR	2.3
1	A	600	ARG	2.3
1	D	297	THR	2.3
1	D	847	VAL	2.3
1	A	596	ASP	2.2
2	E	39	U	2.2

Continued on next page...

Continued from previous page...

Mol	Chain	Res	Type	RSRZ
1	A	179	CYS	2.2
1	A	269	GLN	2.2
1	A	582	GLU	2.2
2	E	29	G	2.2
1	D	165	VAL	2.1
1	D	280	ALA	2.1
1	D	810	VAL	2.1
1	D	849	TYR	2.1
1	A	578	GLY	2.1
1	A	602	VAL	2.0
1	D	91	VAL	2.0
1	D	457	ASP	2.0
1	D	844	VAL	2.0
1	D	92	LYS	2.0

6.2 Non-standard residues in protein, DNA, RNA chains [i](#)

There are no non-standard protein/DNA/RNA residues in this entry.

6.3 Carbohydrates [i](#)

There are no carbohydrates in this entry.

6.4 Ligands [i](#)

In the following table, the Atoms column lists the number of modelled atoms in the group and the number defined in the chemical component dictionary. LLDF column lists the quality of electron density of the group with respect to its neighbouring residues in protein, DNA or RNA chains. The B-factors column lists the minimum, median, 95th percentile and maximum values of B factors of atoms in the group. The column labelled 'Q< 0.9' lists the number of atoms with occupancy less than 0.9.

Mol	Type	Chain	Res	Atoms	RSCC	RSR	LLDF	B-factors(Å ²)	Q<0.9
5	LEU	A	902	8/9	0.98	0.22	2.05	23,25,27,27	0
5	LEU	D	902	8/9	0.97	0.23	0.89	31,37,40,43	0
4	LMS	A	901	23/23	0.99	0.18	0.48	20,22,25,28	0
4	LMS	D	901	23/23	0.98	0.19	-0.13	32,34,40,42	0
3	ZN	A	900	1/1	0.81	0.07	-1.91	104,104,104,104	0
3	ZN	D	900	1/1	0.92	0.05	-2.41	105,105,105,105	0
6	MG	E	1077	1/1	0.97	0.15	-	67,67,67,67	0
6	MG	B	1077	1/1	0.92	0.23	-	55,55,55,55	0

6.5 Other polymers

There are no such residues in this entry.