



# Full wwPDB X-ray Structure Validation Report ⓘ

Feb 1, 2016 – 07:25 AM GMT

PDB ID : 3ART  
Title : Crystal Structure Analysis of Chitinase A from *Vibrio harveyi* with novel inhibitors - W275G mutant complex structure with DEQUALINIUM  
Authors : Pantoom, S.; Vetter, I.R.; Prinz, H.; Suginta, W.  
Deposited on : 2010-12-09  
Resolution : 2.23 Å(reported)

This is a Full wwPDB X-ray Structure Validation Report for a publicly released PDB entry.  
We welcome your comments at [validation@mail.wwpdb.org](mailto:validation@mail.wwpdb.org)  
A user guide is available at  
<http://wwpdb.org/validation/2016/XrayValidationReportHelp>  
with specific help available everywhere you see the ⓘ symbol.

---

The following versions of software and data (see [references ⓘ](#)) were used in the production of this report:

MolProbity : 4.02b-467  
Mogul : 1.7 (RC4), CSD as536be (2015)  
Xtriage (Phenix) : 1.9-1692  
EDS : rb-20026688  
Percentile statistics : 20151230.v01 (using entries in the PDB archive December 30th 2015)  
Refmac : 5.8.0135  
CCP4 : 6.5.0  
Ideal geometry (proteins) : Engh & Huber (2001)  
Ideal geometry (DNA, RNA) : Parkinson et al. (1996)  
Validation Pipeline (wwPDB-VP) : trunk26865

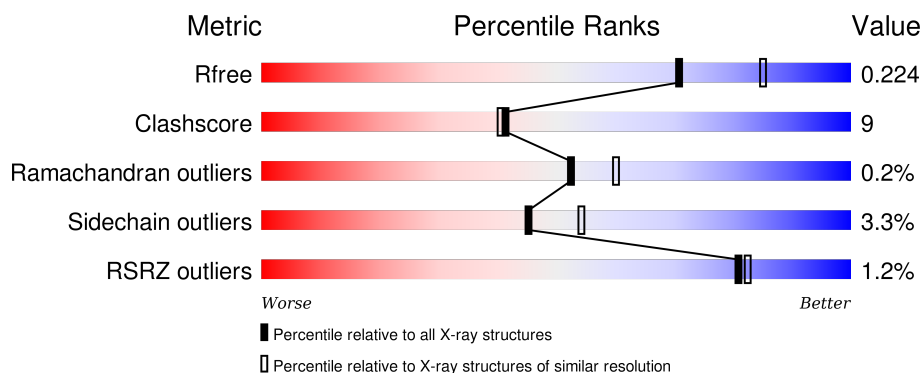
# 1 Overall quality at a glance

The following experimental techniques were used to determine the structure:

## *X-RAY DIFFRACTION*

The reported resolution of this entry is 2.23 Å.

Percentile scores (ranging between 0-100) for global validation metrics of the entry are shown in the following graphic. The table shows the number of entries on which the scores are based.



Metric	Whole archive (#Entries)	Similar resolution (#Entries, resolution range(Å))
$R_{free}$	91344	1611 (2.26-2.22)
Clashscore	102246	1764 (2.26-2.22)
Ramachandran outliers	100387	1724 (2.26-2.22)
Sidechain outliers	100360	1724 (2.26-2.22)
RSRZ outliers	91569	1616 (2.26-2.22)

The table below summarises the geometric issues observed across the polymeric chains and their fit to the electron density. The red, orange, yellow and green segments on the lower bar indicate the fraction of residues that contain outliers for  $\geq 3$ , 2, 1 and 0 types of geometric quality criteria. A grey segment represents the fraction of residues that are not modelled. The numeric value for each fraction is indicated below the corresponding segment, with a dot representing fractions  $\leq 5\%$ . The upper red bar (where present) indicates the fraction of residues that have poor fit to the electron density. The numeric value is given above the bar.

Mol	Chain	Length	Quality of chain
1	A	584	<div> <div></div> <div>86%</div> <div>11%</div> <div>..</div> </div>

The following table lists non-polymeric compounds, carbohydrate monomers and non-standard residues in protein, DNA, RNA chains that are outliers for geometric or electron-density-fit criteria:

Mol	Type	Chain	Res	Chirality	Geometry	Clashes	Electron density
2	DEQ	A	606	-	-	-	X

*Continued on next page...*

*Continued from previous page...*

Mol	Type	Chain	Res	Chirality	Geometry	Clashes	Electron density
2	DEQ	A	607	-	-	-	X
2	DEQ	A	608	-	-	-	X

## 2 Entry composition [i](#)

There are 4 unique types of molecules in this entry. The entry contains 4989 atoms, of which 0 are hydrogens and 0 are deuteriums.

In the tables below, the ZeroOcc column contains the number of atoms modelled with zero occupancy, the AltConf column contains the number of residues with at least one atom in alternate conformation and the Trace column contains the number of residues modelled with at most 2 atoms.

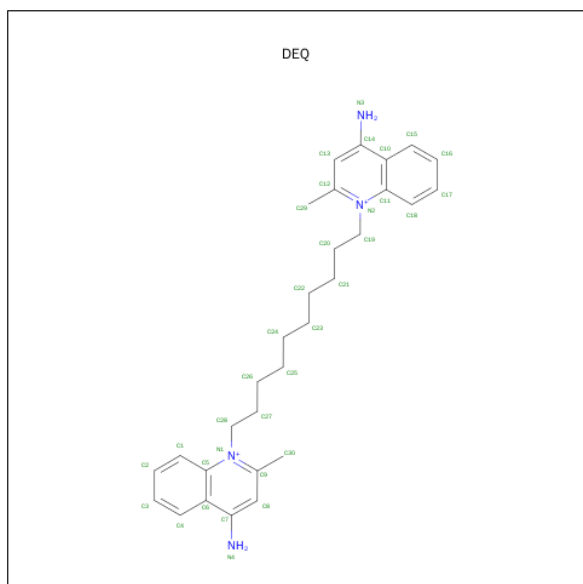
- Molecule 1 is a protein called Chitinase A.

Mol	Chain	Residues	Atoms					ZeroOcc	AltConf	Trace
			Total	C	N	O	S			
1	A	570	4435	2818	712	877	28	0	14	0

There are 9 discrepancies between the modelled and reference sequences:

Chain	Residue	Modelled	Actual	Comment	Reference
A	275	GLY	TRP	ENGINEERED MUTATION	UNP Q9AMP1
A	598	ARG	-	EXPRESSION TAG	UNP Q9AMP1
A	599	SER	-	EXPRESSION TAG	UNP Q9AMP1
A	600	HIS	-	EXPRESSION TAG	UNP Q9AMP1
A	601	HIS	-	EXPRESSION TAG	UNP Q9AMP1
A	602	HIS	-	EXPRESSION TAG	UNP Q9AMP1
A	603	HIS	-	EXPRESSION TAG	UNP Q9AMP1
A	604	HIS	-	EXPRESSION TAG	UNP Q9AMP1
A	605	HIS	-	EXPRESSION TAG	UNP Q9AMP1

- Molecule 2 is DEQUALINIUM (three-letter code: DEQ) (formula: C<sub>30</sub>H<sub>40</sub>N<sub>4</sub>).



Mol	Chain	Residues	Atoms			ZeroOcc	AltConf
2	A	1	Total	C	N	0	0
			34	30	4		
2	A	1	Total	C	N	0	0
			34	30	4		
2	A	1	Total	C	N	0	0
			34	30	4		

- Molecule 3 is GLYCEROL (three-letter code: GOL) (formula:  $C_3H_8O_3$ ).



Mol	Chain	Residues	Atoms			ZeroOcc	AltConf
3	A	1	Total	C	O	0	0
			6	3	3		

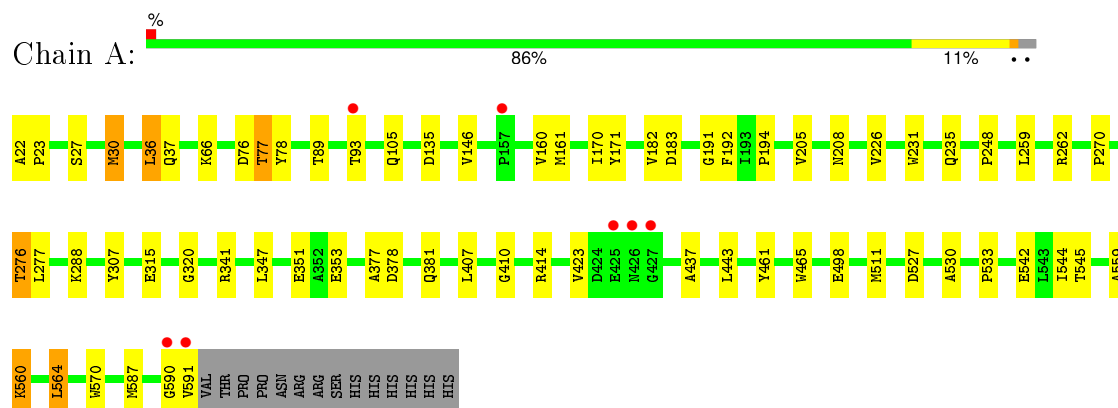
- Molecule 4 is water.

Mol	Chain	Residues	Atoms		ZeroOcc	AltConf
4	A	446	Total	O	0	0
			446	446		

### 3 Residue-property plots

These plots are drawn for all protein, RNA and DNA chains in the entry. The first graphic for a chain summarises the proportions of errors displayed in the second graphic. The second graphic shows the sequence view annotated by issues in geometry and electron density. Residues are color-coded according to the number of geometric quality criteria for which they contain at least one outlier: green = 0, yellow = 1, orange = 2 and red = 3 or more. A red dot above a residue indicates a poor fit to the electron density ( $RSRZ > 2$ ). Stretches of 2 or more consecutive residues without any outlier are shown as a green connector. Residues present in the sample, but not in the model, are shown in grey.

#### ● Molecule 1: Chitinase A



## 4 Data and refinement statistics

Property	Value	Source
Space group	P 21 21 21	Depositor
Cell constants a, b, c, $\alpha$ , $\beta$ , $\gamma$	66.60Å 84.15Å 102.60Å 90.00° 90.00° 90.00°	Depositor
Resolution (Å)	19.94 – 2.23 19.94 – 2.23	Depositor EDS
% Data completeness (in resolution range)	100.0 (19.94-2.23) 98.4 (19.94-2.23)	Depositor EDS
$R_{merge}$	0.08	Depositor
$R_{sym}$	(Not available)	Depositor
$\langle I/\sigma(I) \rangle$ <sup>1</sup>	3.39 (at 2.23Å)	Xtriage
Refinement program	REFMAC 5.5.0102	Depositor
R, $R_{free}$	0.162 , 0.229 0.161 , 0.224	Depositor DCC
$R_{free}$ test set	1412 reflections (5.26%)	DCC
Wilson B-factor (Å <sup>2</sup> )	16.9	Xtriage
Anisotropy	0.127	Xtriage
Bulk solvent $k_{sol}$ (e/Å <sup>3</sup> ), $B_{sol}$ (Å <sup>2</sup> )	0.35 , 36.5	EDS
Estimated twinning fraction	No twinning to report.	Xtriage
L-test for twinning <sup>2</sup>	$\langle  L  \rangle = 0.48$ , $\langle L^2 \rangle = 0.31$	Xtriage
Outliers	0 of 28235 reflections	Xtriage
$F_o, F_c$ correlation	0.95	EDS
Total number of atoms	4989	wwPDB-VP
Average B, all atoms (Å <sup>2</sup> )	16.0	wwPDB-VP

Xtriage's analysis on translational NCS is as follows: *The largest off-origin peak in the Patterson function is 5.35% of the height of the origin peak. No significant pseudotranslation is detected.*

<sup>1</sup>Intensities estimated from amplitudes.

<sup>2</sup>Theoretical values of  $\langle |L| \rangle$ ,  $\langle L^2 \rangle$  for acentric reflections are 0.5, 0.375 respectively for untwinned datasets, and 0.333, 0.2 for perfectly twinned datasets.

## 5 Model quality [i](#)

### 5.1 Standard geometry [i](#)

Bond lengths and bond angles in the following residue types are not validated in this section: GOL, DEQ

The Z score for a bond length (or angle) is the number of standard deviations the observed value is removed from the expected value. A bond length (or angle) with  $|Z| > 5$  is considered an outlier worth inspection. RMSZ is the root-mean-square of all Z scores of the bond lengths (or angles).

Mol	Chain	Bond lengths		Bond angles	
		RMSZ	$\# Z  > 5$	RMSZ	$\# Z  > 5$
1	A	1.00	2/4587 (0.0%)	0.87	4/6235 (0.1%)

All (2) bond length outliers are listed below:

Mol	Chain	Res	Type	Atoms	Z	Observed(Å)	Ideal(Å)
1	A	353	GLU	CD-OE2	5.74	1.31	1.25
1	A	377	ALA	CA-CB	5.06	1.63	1.52

All (4) bond angle outliers are listed below:

Mol	Chain	Res	Type	Atoms	Z	Observed(°)	Ideal(°)
1	A	135	ASP	CB-CG-OD1	5.68	123.41	118.30
1	A	341	ARG	NE-CZ-NH2	-5.44	117.58	120.30
1	A	527	ASP	CB-CG-OD1	5.44	123.19	118.30
1	A	341	ARG	NE-CZ-NH1	5.41	123.00	120.30

There are no chirality outliers.

There are no planarity outliers.

### 5.2 Too-close contacts [i](#)

In the following table, the Non-H and H(model) columns list the number of non-hydrogen atoms and hydrogen atoms in the chain respectively. The H(added) column lists the number of hydrogen atoms added and optimized by MolProbity. The Clashes column lists the number of clashes within the asymmetric unit, whereas Symm-Clashes lists symmetry related clashes.

Mol	Chain	Non-H	H(model)	H(added)	Clashes	Symm-Clashes
1	A	4435	0	4222	57	0
2	A	102	0	120	30	0

*Continued on next page...*



*Continued from previous page...*

Mol	Chain	Non-H	H(model)	H(added)	Clashes	Symm-Clashes
3	A	6	0	8	0	0
4	A	446	0	0	11	0
All	All	4989	0	4350	76	0

The all-atom clashscore is defined as the number of clashes found per 1000 atoms (including hydrogen atoms). The all-atom clashscore for this structure is 9.

All (76) close contacts within the same asymmetric unit are listed below, sorted by their clash magnitude.

Atom-1	Atom-2	Interatomic distance (Å)	Clash overlap (Å)
2:A:607:DEQ:H131	4:A:1031:HOH:O	1.19	1.27
1:A:182:VAL:HG11	1:A:259:LEU:HD11	1.28	1.14
1:A:511[B]:MET:HE1	1:A:544:ILE:HD13	1.31	1.12
1:A:146:VAL:HB	2:A:608:DEQ:H293	1.18	1.08
2:A:607:DEQ:H11	2:A:607:DEQ:H272	1.34	1.07
1:A:511[B]:MET:CE	1:A:544:ILE:HD13	1.89	1.03
1:A:146:VAL:HB	2:A:608:DEQ:C29	1.93	0.99
2:A:607:DEQ:N3	4:A:950:HOH:O	1.92	0.99
2:A:606:DEQ:H191	2:A:606:DEQ:H272	1.46	0.97
1:A:511[B]:MET:CE	1:A:544:ILE:CD1	2.46	0.93
1:A:511[B]:MET:HE1	1:A:544:ILE:CD1	2.05	0.87
1:A:76[A]:ASP:OD2	1:A:77[A]:THR:HG23	1.76	0.86
2:A:608:DEQ:H272	2:A:608:DEQ:H292	1.56	0.85
1:A:315[A]:GLU:OE2	4:A:815:HOH:O	1.94	0.85
1:A:511[B]:MET:HE3	1:A:544:ILE:CD1	2.08	0.83
2:A:606:DEQ:H301	2:A:606:DEQ:H271	1.60	0.83
1:A:146:VAL:CB	2:A:608:DEQ:H293	2.07	0.81
1:A:511[B]:MET:HE3	1:A:544:ILE:HD12	1.65	0.77
2:A:606:DEQ:C27	2:A:606:DEQ:H301	2.15	0.77
2:A:607:DEQ:H201	2:A:607:DEQ:H292	1.66	0.76
2:A:606:DEQ:H181	2:A:606:DEQ:H202	1.67	0.74
1:A:559:ALA:HA	1:A:564:LEU:HD22	1.70	0.73
1:A:183:ASP:H	2:A:608:DEQ:H222	1.54	0.73
1:A:182:VAL:HG11	1:A:259:LEU:CD1	2.14	0.71
2:A:606:DEQ:H201	4:A:13:HOH:O	1.91	0.69
1:A:105:GLN:NE2	4:A:894:HOH:O	2.24	0.69
1:A:146:VAL:HG21	2:A:608:DEQ:H212	1.77	0.67
1:A:262:ARG:NH2	2:A:608:DEQ:H181	2.10	0.66
1:A:30:MET:SD	1:A:36:LEU:HD22	2.36	0.66
1:A:194:PRO:HB3	1:A:277:LEU:HD22	1.78	0.65
2:A:606:DEQ:H211	4:A:1023:HOH:O	1.96	0.64

*Continued on next page...*

*Continued from previous page...*

Atom-1	Atom-2	Interatomic distance (Å)	Clash overlap (Å)
1:A:320:GLY:O	2:A:606:DEQ:H292	1.98	0.64
1:A:37:GLN:HE21	1:A:248:PRO:HD3	1.63	0.64
1:A:276:THR:HG22	4:A:994:HOH:O	1.99	0.63
2:A:607:DEQ:C1	2:A:607:DEQ:H272	2.19	0.62
1:A:76[A]:ASP:OD2	1:A:77[A]:THR:CG2	2.48	0.61
1:A:22:ALA:N	1:A:23:PRO:CD	2.63	0.61
1:A:262:ARG:HH21	2:A:608:DEQ:H181	1.67	0.60
1:A:146:VAL:HG21	2:A:608:DEQ:C21	2.31	0.60
1:A:270:PRO:HD3	1:A:307:TYR:CD2	2.37	0.59
2:A:607:DEQ:H201	2:A:607:DEQ:C29	2.32	0.59
1:A:208:ASN:HD22	2:A:607:DEQ:H241	1.68	0.59
1:A:262:ARG:HH21	2:A:608:DEQ:C18	2.16	0.58
1:A:78:TYR:O	1:A:89[A]:THR:HG23	2.04	0.57
1:A:276:THR:HG23	4:A:828:HOH:O	2.05	0.57
1:A:410:GLY:HA2	1:A:530:ALA:HB2	1.86	0.56
1:A:194:PRO:HD2	1:A:226:VAL:O	2.07	0.55
1:A:560:LYS:NZ	1:A:590:GLY:HA3	2.25	0.51
1:A:560:LYS:HZ1	1:A:590:GLY:H	1.60	0.50
1:A:560:LYS:HE2	1:A:590:GLY:O	2.11	0.50
1:A:160:VAL:O	1:A:161:MET:HE2	2.13	0.48
1:A:66:LYS:HE3	4:A:999:HOH:O	2.12	0.48
1:A:231:TRP:HA	1:A:235:GLN:HB2	1.96	0.48
2:A:606:DEQ:H293	2:A:606:DEQ:H282	1.96	0.48
1:A:560:LYS:HZ1	1:A:590:GLY:N	2.12	0.48
2:A:606:DEQ:H261	2:A:606:DEQ:H231	1.59	0.47
1:A:560:LYS:CB	1:A:560:LYS:HZ3	2.26	0.47
2:A:607:DEQ:C20	2:A:607:DEQ:C29	2.94	0.45
1:A:347:LEU:O	1:A:351:GLU:HG3	2.16	0.45
1:A:22:ALA:N	1:A:23:PRO:HD2	2.30	0.45
2:A:606:DEQ:C18	2:A:606:DEQ:H202	2.42	0.44
1:A:560:LYS:HZ3	1:A:590:GLY:HA3	1.82	0.44
1:A:414:ARG:HH11	1:A:414:ARG:HG2	1.80	0.44
1:A:378:ASP:O	1:A:381:GLN:HG2	2.18	0.44
1:A:37:GLN:NE2	1:A:248:PRO:HD3	2.32	0.43
1:A:161:MET:CE	1:A:587:MET:HG3	2.48	0.43
2:A:607:DEQ:C17	4:A:1027:HOH:O	2.66	0.43
1:A:191:GLY:HA2	1:A:192:PHE:HA	1.77	0.43
1:A:170:ILE:O	4:A:782:HOH:O	2.22	0.42
1:A:560:LYS:HZ2	1:A:560:LYS:HG3	1.66	0.42
1:A:465:TRP:O	1:A:542:GLU:HA	2.20	0.42
1:A:407:LEU:HA	1:A:437:ALA:HB3	2.00	0.42

*Continued on next page...*

*Continued from previous page...*

Atom-1	Atom-2	Interatomic distance (Å)	Clash overlap (Å)
1:A:161:MET:HE3	1:A:587:MET:HG3	2.02	0.41
1:A:288:LYS:HA	1:A:288:LYS:HD3	1.92	0.41
2:A:608:DEQ:H282	2:A:608:DEQ:H301	1.88	0.41
1:A:461:TYR:CE1	1:A:570[A]:TRP:HD1	2.39	0.41

There are no symmetry-related clashes.

## 5.3 Torsion angles [i](#)

### 5.3.1 Protein backbone [i](#)

In the following table, the Percentiles column shows the percent Ramachandran outliers of the chain as a percentile score with respect to all X-ray entries followed by that with respect to entries of similar resolution.

The Analysed column shows the number of residues for which the backbone conformation was analysed, and the total number of residues.

Mol	Chain	Analysed	Favoured	Allowed	Outliers	Percentiles
1	A	582/584 (100%)	565 (97%)	16 (3%)	1 (0%)	52 60

All (1) Ramachandran outliers are listed below:

Mol	Chain	Res	Type
1	A	171	TYR

### 5.3.2 Protein sidechains [i](#)

In the following table, the Percentiles column shows the percent sidechain outliers of the chain as a percentile score with respect to all X-ray entries followed by that with respect to entries of similar resolution.

The Analysed column shows the number of residues for which the sidechain conformation was analysed, and the total number of residues.

Mol	Chain	Analysed	Rotameric	Outliers	Percentiles
1	A	468/468 (100%)	451 (96%)	17 (4%)	42 50

All (17) residues with a non-rotameric sidechain are listed below:

Mol	Chain	Res	Type
1	A	27	SER
1	A	30	MET
1	A	36	LEU
1	A	77[A]	THR
1	A	77[B]	THR
1	A	93[A]	THR
1	A	93[B]	THR
1	A	205	VAL
1	A	276	THR
1	A	423	VAL
1	A	443	LEU
1	A	498	GLU
1	A	533	PRO
1	A	545	THR
1	A	560	LYS
1	A	564	LEU
1	A	591	VAL

Some sidechains can be flipped to improve hydrogen bonding and reduce clashes. All (4) such sidechains are listed below:

Mol	Chain	Res	Type
1	A	37	GLN
1	A	208	ASN
1	A	211	ASN
1	A	549	HIS

### 5.3.3 RNA ⓘ

There are no RNA molecules in this entry.

## 5.4 Non-standard residues in protein, DNA, RNA chains ⓘ

There are no non-standard protein/DNA/RNA residues in this entry.

## 5.5 Carbohydrates ⓘ

There are no carbohydrates in this entry.

## 5.6 Ligand geometry

4 ligands are modelled in this entry.

In the following table, the Counts columns list the number of bonds (or angles) for which Mogul statistics could be retrieved, the number of bonds (or angles) that are observed in the model and the number of bonds (or angles) that are defined in the chemical component dictionary. The Link column lists molecule types, if any, to which the group is linked. The Z score for a bond length (or angle) is the number of standard deviations the observed value is removed from the expected value. A bond length (or angle) with  $|Z| > 2$  is considered an outlier worth inspection. RMSZ is the root-mean-square of all Z scores of the bond lengths (or angles).

Mol	Type	Chain	Res	Link	Bond lengths			Bond angles		
					Counts	RMSZ	$\# Z  > 2$	Counts	RMSZ	$\# Z  > 2$
3	GOL	A	3500	-	5,5,5	0.22	0	5,5,5	0.68	0
2	DEQ	A	606	-	37,37,37	2.37	7 (18%)	36,50,50	2.73	10 (27%)
2	DEQ	A	607	-	37,37,37	2.52	8 (21%)	36,50,50	2.72	14 (38%)
2	DEQ	A	608	-	37,37,37	2.52	5 (13%)	36,50,50	1.98	7 (19%)

In the following table, the Chirals column lists the number of chiral outliers, the number of chiral centers analysed, the number of these observed in the model and the number defined in the chemical component dictionary. Similar counts are reported in the Torsion and Rings columns. '-' means no outliers of that kind were identified.

Mol	Type	Chain	Res	Link	Chirals	Torsions	Rings
3	GOL	A	3500	-	-	0/4/4/4	0/0/0/0
2	DEQ	A	606	-	-	1/13/13/13	0/4/4/4
2	DEQ	A	607	-	-	1/13/13/13	0/4/4/4
2	DEQ	A	608	-	-	0/13/13/13	0/4/4/4

All (20) bond length outliers are listed below:

Mol	Chain	Res	Type	Atoms	Z	Observed(Å)	Ideal(Å)
2	A	607	DEQ	C17-C18	2.04	1.41	1.36
2	A	607	DEQ	C28-N1	2.09	1.55	1.47
2	A	608	DEQ	C30-C9	2.44	1.55	1.49
2	A	606	DEQ	C2-C1	2.49	1.42	1.36
2	A	606	DEQ	C29-C12	2.75	1.56	1.49
2	A	607	DEQ	C29-C12	2.84	1.56	1.49
2	A	607	DEQ	C30-C9	2.91	1.56	1.49
2	A	606	DEQ	C30-C9	3.19	1.57	1.49
2	A	608	DEQ	C5-N1	4.41	1.46	1.40
2	A	606	DEQ	C5-N1	4.82	1.46	1.40
2	A	607	DEQ	C5-N1	5.15	1.47	1.40
2	A	606	DEQ	C11-N2	5.45	1.47	1.40

*Continued on next page...*

*Continued from previous page...*

Mol	Chain	Res	Type	Atoms	Z	Observed(Å)	Ideal(Å)
2	A	606	DEQ	C12-N2	5.76	1.43	1.36
2	A	607	DEQ	C11-N2	6.00	1.48	1.40
2	A	608	DEQ	C11-N2	6.93	1.49	1.40
2	A	608	DEQ	C12-N2	7.29	1.44	1.36
2	A	607	DEQ	C12-N2	7.73	1.45	1.36
2	A	607	DEQ	C9-N1	8.09	1.45	1.36
2	A	606	DEQ	C9-N1	8.45	1.46	1.36
2	A	608	DEQ	C9-N1	8.60	1.46	1.36

All (31) bond angle outliers are listed below:

Mol	Chain	Res	Type	Atoms	Z	Observed(°)	Ideal(°)
2	A	607	DEQ	C4-C6-C7	-2.87	118.65	122.87
2	A	607	DEQ	C29-C12-C13	-2.84	115.53	121.67
2	A	607	DEQ	C15-C10-C14	-2.83	118.70	122.87
2	A	607	DEQ	C1-C5-C6	-2.49	116.17	119.40
2	A	607	DEQ	C30-C9-C8	-2.36	116.55	121.67
2	A	606	DEQ	C15-C10-C14	-2.28	119.51	122.87
2	A	607	DEQ	C17-C16-C15	-2.28	117.14	120.45
2	A	606	DEQ	C4-C6-C7	-2.26	119.55	122.87
2	A	608	DEQ	C29-C12-C13	-2.25	116.79	121.67
2	A	606	DEQ	C30-C9-C8	-2.25	116.80	121.67
2	A	607	DEQ	C18-C11-C10	-2.19	116.56	119.40
2	A	606	DEQ	C28-N1-C5	-2.18	116.95	119.06
2	A	608	DEQ	C15-C10-C14	-2.11	119.76	122.87
2	A	608	DEQ	C4-C6-C7	-2.09	119.80	122.87
2	A	608	DEQ	C30-C9-C8	-2.07	117.19	121.67
2	A	607	DEQ	C1-C5-N1	2.07	123.65	121.15
2	A	607	DEQ	C4-C6-C5	2.31	120.74	118.17
2	A	606	DEQ	C15-C10-C11	2.55	121.01	118.17
2	A	607	DEQ	C29-C12-N2	2.62	124.55	119.76
2	A	608	DEQ	C13-C12-N2	2.65	121.69	119.51
2	A	606	DEQ	C4-C6-C5	2.76	121.24	118.17
2	A	606	DEQ	C30-C9-N1	2.99	125.24	119.76
2	A	607	DEQ	C15-C10-C11	3.02	121.52	118.17
2	A	607	DEQ	C19-N2-C11	3.92	122.86	119.06
2	A	608	DEQ	C19-N2-C11	6.79	125.65	119.06
2	A	608	DEQ	C20-C19-N2	6.84	118.06	112.29
2	A	606	DEQ	C27-C28-N1	7.85	118.92	112.29
2	A	607	DEQ	C28-N1-C5	8.09	126.92	119.06
2	A	606	DEQ	C19-N2-C11	8.34	127.15	119.06
2	A	606	DEQ	C20-C19-N2	8.36	119.35	112.29

*Continued on next page...*

*Continued from previous page...*

Mol	Chain	Res	Type	Atoms	Z	Observed( $^{\circ}$ )	Ideal( $^{\circ}$ )
2	A	607	DEQ	C27-C28-N1	9.84	120.60	112.29

There are no chirality outliers.

All (2) torsion outliers are listed below:

Mol	Chain	Res	Type	Atoms
2	A	607	DEQ	C27-C28-N1-C9
2	A	606	DEQ	C27-C28-N1-C5

There are no ring outliers.

3 monomers are involved in 30 short contacts:

Mol	Chain	Res	Type	Clashes	Symm-Clashes
2	A	606	DEQ	10	0
2	A	607	DEQ	9	0
2	A	608	DEQ	11	0

## 5.7 Other polymers [i](#)

There are no such residues in this entry.

## 5.8 Polymer linkage issues [i](#)

There are no chain breaks in this entry.

## 6 Fit of model and data [i](#)

### 6.1 Protein, DNA and RNA chains [i](#)

In the following table, the column labelled ‘#RSRZ> 2’ contains the number (and percentage) of RSRZ outliers, followed by percent RSRZ outliers for the chain as percentile scores relative to all X-ray entries and entries of similar resolution. The OWAB column contains the minimum, median, 95<sup>th</sup> percentile and maximum values of the occupancy-weighted average B-factor per residue. The column labelled ‘Q< 0.9’ lists the number of (and percentage) of residues with an average occupancy less than 0.9.

Mol	Chain	Analysed	<RSRZ>	#RSRZ>2	OWAB(Å <sup>2</sup> )	Q<0.9
1	A	570/584 (97%)	-0.54	7 (1%) 81 82	5, 14, 28, 53	0

All (7) RSRZ outliers are listed below:

Mol	Chain	Res	Type	RSRZ
1	A	590	GLY	3.6
1	A	427	GLY	3.5
1	A	426	ASN	2.8
1	A	425	GLU	2.8
1	A	591	VAL	2.3
1	A	157	PRO	2.2
1	A	93[A]	THR	2.1

### 6.2 Non-standard residues in protein, DNA, RNA chains [i](#)

There are no non-standard protein/DNA/RNA residues in this entry.

### 6.3 Carbohydrates [i](#)

There are no carbohydrates in this entry.

### 6.4 Ligands [i](#)

In the following table, the Atoms column lists the number of modelled atoms in the group and the number defined in the chemical component dictionary. LLDF column lists the quality of electron density of the group with respect to its neighbouring residues in protein, DNA or RNA chains. The B-factors column lists the minimum, median, 95<sup>th</sup> percentile and maximum values of B factors of atoms in the group. The column labelled ‘Q< 0.9’ lists the number of atoms with occupancy less than 0.9.



Mol	Type	Chain	Res	Atoms	RSCC	RSR	LLDF	B-factors( $\text{\AA}^2$ )	Q<0.9
2	DEQ	A	608	34/34	0.11	0.61	22.67	49,74,86,87	0
2	DEQ	A	606	34/34	0.60	0.43	14.74	55,62,68,69	0
2	DEQ	A	607	34/34	0.49	0.39	3.29	39,49,71,72	0
3	GOL	A	3500	6/6	0.98	0.09	-0.29	13,15,17,24	0

## 6.5 Other polymers [i](#)

There are no such residues in this entry.