



Full wwPDB X-ray Structure Validation Report ⓘ

Feb 1, 2016 – 02:53 PM GMT

PDB ID : 4ASY
Title : Pseudomonas aeruginosa RmlA in complex with allosteric inhibitor
Authors : Alphey, M.S.; Pirrie, L.; Torrie, L.S.; Gardiner, M.; Sarkar, A.; Brenk, R.;
Westwood, N.J.; Gray, D.; Naismith, J.H.
Deposited on : 2012-05-03
Resolution : 2.30 Å(reported)

This is a Full wwPDB X-ray Structure Validation Report for a publicly released PDB entry.
We welcome your comments at validation@mail.wwpdb.org
A user guide is available at
<http://wwpdb.org/validation/2016/XrayValidationReportHelp>
with specific help available everywhere you see the ⓘ symbol.

The following versions of software and data (see [references ⓘ](#)) were used in the production of this report:

MolProbity : 4.02b-467
Mogul : 1.7 (RC4), CSD as536be (2015)
Xtriage (Phenix) : 1.9-1692
EDS : rb-20026688
Percentile statistics : 20151230.v01 (using entries in the PDB archive December 30th 2015)
Refmac : 5.8.0135
CCP4 : 6.5.0
Ideal geometry (proteins) : Engh & Huber (2001)
Ideal geometry (DNA, RNA) : Parkinson et al. (1996)
Validation Pipeline (wwPDB-VP) : trunk26865

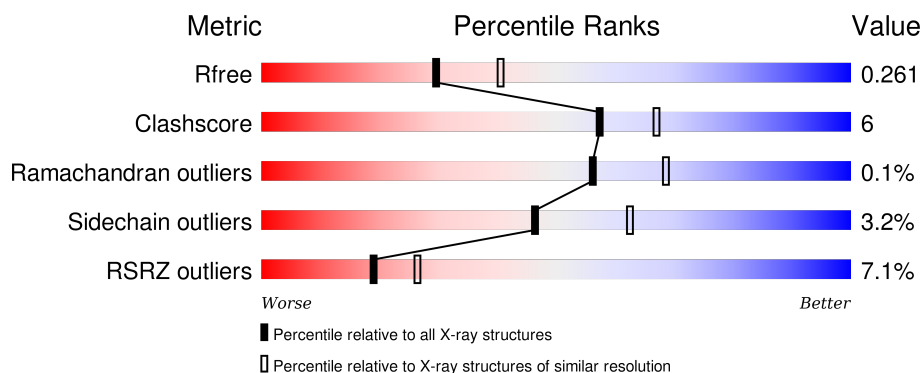
1 Overall quality at a glance

The following experimental techniques were used to determine the structure:

X-RAY DIFFRACTION

The reported resolution of this entry is 2.30 Å.

Percentile scores (ranging between 0-100) for global validation metrics of the entry are shown in the following graphic. The table shows the number of entries on which the scores are based.



Metric	Whole archive (#Entries)	Similar resolution (#Entries, resolution range(Å))
R_{free}	91344	3852 (2.30-2.30)
Clashscore	102246	4452 (2.30-2.30)
Ramachandran outliers	100387	4410 (2.30-2.30)
Sidechain outliers	100360	4409 (2.30-2.30)
RSRZ outliers	91569	3857 (2.30-2.30)

The table below summarises the geometric issues observed across the polymeric chains and their fit to the electron density. The red, orange, yellow and green segments on the lower bar indicate the fraction of residues that contain outliers for ≥ 3 , 2, 1 and 0 types of geometric quality criteria. A grey segment represents the fraction of residues that are not modelled. The numeric value for each fraction is indicated below the corresponding segment, with a dot representing fractions $\leq 5\%$. The upper red bar (where present) indicates the fraction of residues that have poor fit to the electron density. The numeric value is given above the bar.

Mol	Chain	Length	Quality of chain
1	A	293	<div> <div>5%</div> <div>90%</div> <div>9%</div> </div>
1	B	293	<div> <div>8%</div> <div>89%</div> <div>10%</div> </div>
1	C	293	<div> <div>6%</div> <div>87%</div> <div>12%</div> </div>
1	D	293	<div> <div>9%</div> <div>90%</div> <div>10%</div> </div>

The following table lists non-polymeric compounds, carbohydrate monomers and non-standard

residues in protein, DNA, RNA chains that are outliers for geometric or electron-density-fit criteria:

Mol	Type	Chain	Res	Chirality	Geometry	Clashes	Electron density
2	N5Y	C	1294	-	-	-	X
3	CL	B	1295	-	-	-	X
3	CL	C	1295	-	-	-	X
4	MES	A	1296	-	-	-	X

2 Entry composition [i](#)

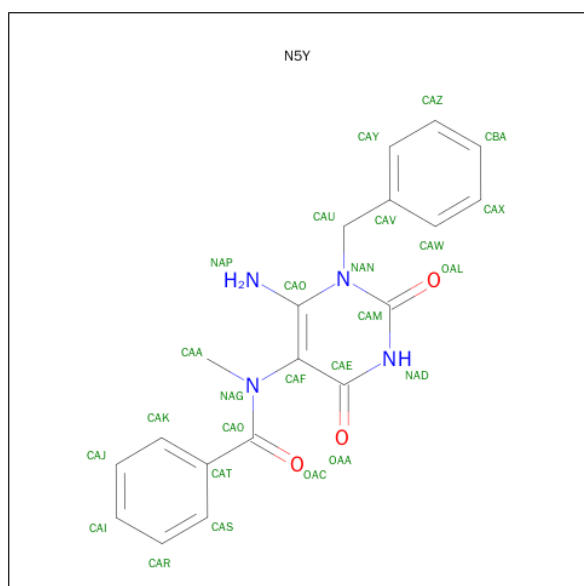
There are 5 unique types of molecules in this entry. The entry contains 9716 atoms, of which 0 are hydrogens and 0 are deuteriums.

In the tables below, the ZeroOcc column contains the number of atoms modelled with zero occupancy, the AltConf column contains the number of residues with at least one atom in alternate conformation and the Trace column contains the number of residues modelled with at most 2 atoms.

- Molecule 1 is a protein called GLUCOSE-1-PHOSPHATE THYMIDYLYLTRANSFERASE.

Mol	Chain	Residues	Atoms					ZeroOcc	AltConf	Trace
1	A	293	Total	C	N	O	S	0	0	0
			2293	1467	386	435	5			
1	B	292	Total	C	N	O	S	0	0	0
			2285	1462	385	434	4			
1	C	293	Total	C	N	O	S	0	0	0
			2293	1467	386	435	5			
1	D	293	Total	C	N	O	S	0	0	0
			2293	1467	386	435	5			

- Molecule 2 is N-(6-AMINO-1-BENZYL-2,4-DIOXO-1,2,3,4-TETRAHYDOPYRIMIDIN-5-YL)-N-METHYLBENZAMIDE (three-letter code: N5Y) (formula: C₁₉H₁₈N₄O₃).



Mol	Chain	Residues	Atoms				ZeroOcc	AltConf
2	A	1	Total	C	N	O	0	0
			26	19	4	3		

Continued on next page...

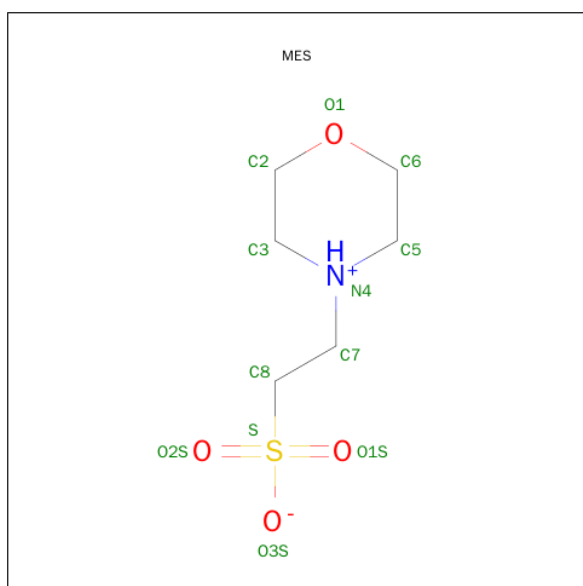
Continued from previous page...

Mol	Chain	Residues	Atoms				ZeroOcc	AltConf
2	B	1	Total	C	N	O	0	0
			26	19	4	3		
2	C	1	Total	C	N	O	0	0
			26	19	4	3		
2	D	1	Total	C	N	O	0	0
			26	19	4	3		

- Molecule 3 is CHLORIDE ION (three-letter code: CL) (formula: Cl).

Mol	Chain	Residues	Atoms		ZeroOcc	AltConf
3	B	1	Total	Cl	0	0
			1	1		
3	A	1	Total	Cl	0	0
			1	1		
3	D	1	Total	Cl	0	0
			1	1		
3	C	1	Total	Cl	0	0
			1	1		

- Molecule 4 is 2-(N-MORPHOLINO)-ETHANESULFONIC ACID (three-letter code: MES) (formula: C₆H₁₃NO₄S).



Mol	Chain	Residues	Atoms					ZeroOcc	AltConf
4	A	1	Total	C	N	O	S	0	0
			12	6	1	4	1		
4	B	1	Total	C	N	O	S	0	0
			12	6	1	4	1		

Continued on next page...

Continued from previous page...

Mol	Chain	Residues	Atoms					ZeroOcc	AltConf
4	C	1	Total	C	N	O	S	0	0
			12	6	1	4	1		
4	D	1	Total	C	N	O	S	0	0
			12	6	1	4	1		

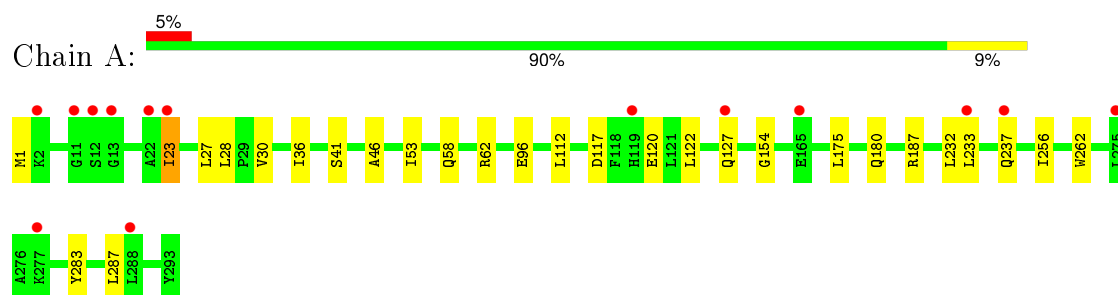
- Molecule 5 is water.

Mol	Chain	Residues	Atoms		ZeroOcc	AltConf
5	A	94	Total	O	0	0
			94	94		
5	B	109	Total	O	0	0
			109	109		
5	C	110	Total	O	0	0
			110	110		
5	D	83	Total	O	0	0
			83	83		

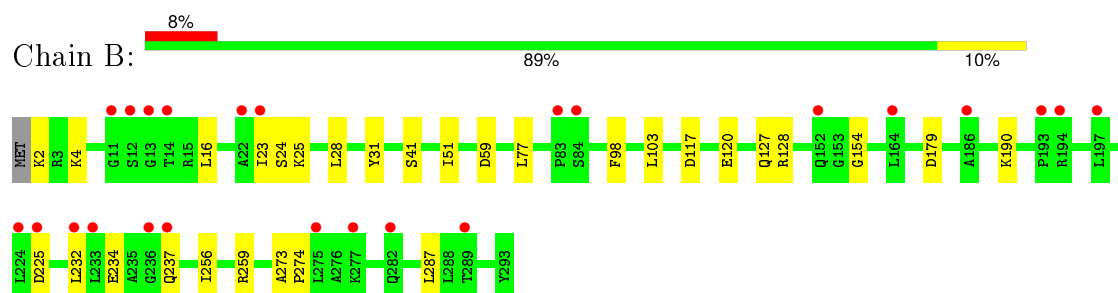
3 Residue-property plots [i](#)

These plots are drawn for all protein, RNA and DNA chains in the entry. The first graphic for a chain summarises the proportions of errors displayed in the second graphic. The second graphic shows the sequence view annotated by issues in geometry and electron density. Residues are color-coded according to the number of geometric quality criteria for which they contain at least one outlier: green = 0, yellow = 1, orange = 2 and red = 3 or more. A red dot above a residue indicates a poor fit to the electron density ($RSRZ > 2$). Stretches of 2 or more consecutive residues without any outlier are shown as a green connector. Residues present in the sample, but not in the model, are shown in grey.

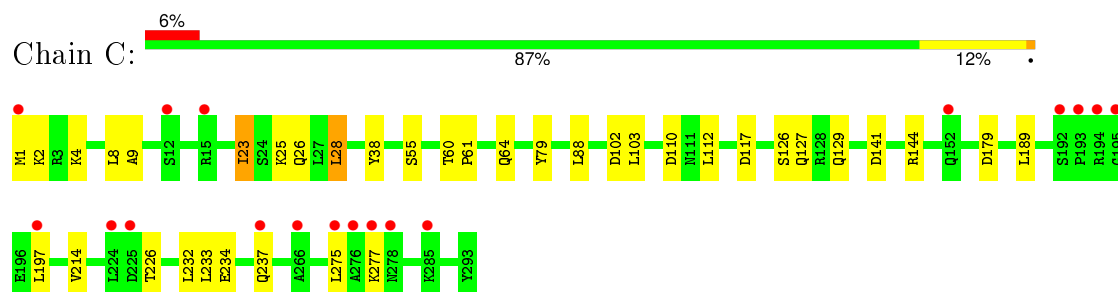
• Molecule 1: GLUCOSE-1-PHOSPHATE THYMIDYLTRANSFERASE



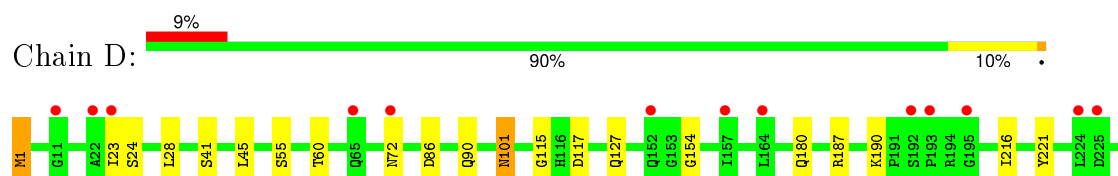
• Molecule 1: GLUCOSE-1-PHOSPHATE THYMIDYLTRANSFERASE

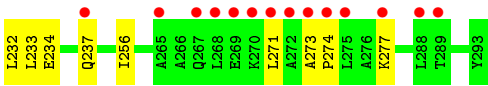


• Molecule 1: GLUCOSE-1-PHOSPHATE THYMIDYLTRANSFERASE



• Molecule 1: GLUCOSE-1-PHOSPHATE THYMIDYLTRANSFERASE





4 Data and refinement statistics

Property	Value	Source
Space group	P 1 21 1	Depositor
Cell constants a, b, c, α , β , γ	73.99Å 136.98Å 75.19Å 90.00° 103.28° 90.00°	Depositor
Resolution (Å)	44.48 – 2.30 44.47 – 2.30	Depositor EDS
% Data completeness (in resolution range)	97.3 (44.48-2.30) 97.3 (44.47-2.30)	Depositor EDS
R_{merge}	0.08	Depositor
R_{sym}	(Not available)	Depositor
$\langle I/\sigma(I) \rangle$ ¹	2.66 (at 2.29Å)	Xtriage
Refinement program	REFMAC 5.6.0117	Depositor
R, R_{free}	0.209 , 0.259 0.214 , 0.261	Depositor DCC
R_{free} test set	3145 reflections (5.26%)	DCC
Wilson B-factor (Å ²)	27.4	Xtriage
Anisotropy	0.180	Xtriage
Bulk solvent k_{sol} (e/Å ³), B_{sol} (Å ²)	0.37 , 41.7	EDS
Estimated twinning fraction	0.033 for l,-k,h	Xtriage
L-test for twinning ²	$\langle L \rangle = 0.48$, $\langle L^2 \rangle = 0.31$	Xtriage
Outliers	1 of 62887 reflections (0.002%)	Xtriage
F_o, F_c correlation	0.90	EDS
Total number of atoms	9716	wwPDB-VP
Average B, all atoms (Å ²)	46.0	wwPDB-VP

Xtriage's analysis on translational NCS is as follows: *The largest off-origin peak in the Patterson function is 3.62% of the height of the origin peak. No significant pseudotranslation is detected.*

¹Intensities estimated from amplitudes.

²Theoretical values of $\langle |L| \rangle$, $\langle L^2 \rangle$ for acentric reflections are 0.5, 0.375 respectively for untwinned datasets, and 0.333, 0.2 for perfectly twinned datasets.

5 Model quality [i](#)

5.1 Standard geometry [i](#)

Bond lengths and bond angles in the following residue types are not validated in this section: N5Y, MES, CL

The Z score for a bond length (or angle) is the number of standard deviations the observed value is removed from the expected value. A bond length (or angle) with $|Z| > 5$ is considered an outlier worth inspection. RMSZ is the root-mean-square of all Z scores of the bond lengths (or angles).

Mol	Chain	Bond lengths		Bond angles	
		RMSZ	$\# Z > 5$	RMSZ	$\# Z > 5$
1	A	0.55	1/2343 (0.0%)	0.65	0/3178
1	B	0.54	0/2335	0.63	0/3168
1	C	0.56	0/2343	0.67	0/3178
1	D	0.55	0/2343	0.67	0/3178
All	All	0.55	1/9364 (0.0%)	0.65	0/12702

All (1) bond length outliers are listed below:

Mol	Chain	Res	Type	Atoms	Z	Observed(Å)	Ideal(Å)
1	A	262	TRP	CD2-CE2	5.47	1.48	1.41

There are no bond angle outliers.

There are no chirality outliers.

There are no planarity outliers.

5.2 Too-close contacts [i](#)

In the following table, the Non-H and H(model) columns list the number of non-hydrogen atoms and hydrogen atoms in the chain respectively. The H(added) column lists the number of hydrogen atoms added and optimized by MolProbity. The Clashes column lists the number of clashes within the asymmetric unit, whereas Symm-Clashes lists symmetry related clashes.

Mol	Chain	Non-H	H(model)	H(added)	Clashes	Symm-Clashes
1	A	2293	0	2284	30	0
1	B	2285	0	2272	29	0
1	C	2293	0	2284	36	0
1	D	2293	0	2284	34	0
2	A	26	0	18	3	0
2	B	26	0	18	2	0

Continued on next page...

Continued from previous page...

Mol	Chain	Non-H	H(model)	H(added)	Clashes	Symm-Clashes
2	C	26	0	18	0	0
2	D	26	0	18	6	0
3	A	1	0	0	0	0
3	B	1	0	0	0	0
3	C	1	0	0	0	0
3	D	1	0	0	0	0
4	A	12	0	13	2	0
4	B	12	0	13	1	0
4	C	12	0	13	1	0
4	D	12	0	13	5	0
5	A	94	0	0	3	0
5	B	109	0	0	1	0
5	C	110	0	0	2	0
5	D	83	0	0	1	0
All	All	9716	0	9248	111	0

The all-atom clashscore is defined as the number of clashes found per 1000 atoms (including hydrogen atoms). The all-atom clashscore for this structure is 6.

All (111) close contacts within the same asymmetric unit are listed below, sorted by their clash magnitude.

Atom-1	Atom-2	Interatomic distance (Å)	Clash overlap (Å)
1:A:237:GLN:OE1	1:C:237:GLN:OE1	1.64	1.16
1:B:237:GLN:OE1	1:D:237:GLN:OE1	1.69	1.08
1:A:23:ILE:HG21	1:C:23:ILE:HD12	1.32	1.05
1:C:23:ILE:HD13	1:C:28:LEU:CD1	1.90	1.02
1:C:23:ILE:HD13	1:C:28:LEU:HD12	1.38	1.01
1:B:23:ILE:HD12	1:D:23:ILE:HD13	1.55	0.87
1:A:23:ILE:HD12	1:C:23:ILE:HG21	1.55	0.86
1:B:23:ILE:HD12	1:D:23:ILE:CD1	2.06	0.84
1:A:23:ILE:CG2	1:C:23:ILE:HD12	2.06	0.83
1:D:23:ILE:HD11	1:D:28:LEU:HD23	1.65	0.78
1:B:237:GLN:HG3	1:D:233:LEU:HD11	1.67	0.75
2:D:1294:N5Y:HAJ	5:D:2013:HOH:O	1.90	0.72
1:A:237:GLN:HG3	1:C:233:LEU:HD11	1.71	0.70
1:A:23:ILE:HG21	1:C:23:ILE:CD1	2.16	0.70
1:B:237:GLN:OE1	1:D:237:GLN:CD	2.30	0.69
1:B:237:GLN:OE1	1:D:237:GLN:HG2	1.93	0.68
1:B:237:GLN:OE1	1:D:237:GLN:CG	2.45	0.64
1:D:154:GLY:O	4:D:1296:MES:H72	1.97	0.64
1:A:237:GLN:CD	1:C:237:GLN:OE1	2.36	0.63

Continued on next page...

Continued from previous page...

Atom-1	Atom-2	Interatomic distance (Å)	Clash overlap (Å)
1:A:154:GLY:O	4:A:1296:MES:H32	1.99	0.62
1:C:9:ALA:HB3	1:C:55:SER:HB3	1.83	0.61
1:C:23:ILE:HD13	1:C:28:LEU:HD13	1.81	0.61
1:A:283:TYR:O	1:A:287:LEU:HD13	2.01	0.60
1:C:141:ASP:OD2	1:C:144:ARG:HD3	2.02	0.59
1:C:8:LEU:HD23	1:C:88:LEU:HD22	1.84	0.59
1:B:103:LEU:HD23	1:B:179:ASP:HA	1.86	0.58
1:D:273:ALA:HB3	1:D:274:PRO:HD3	1.85	0.58
1:A:1:MET:SD	1:A:180:GLN:NE2	2.78	0.57
1:B:154:GLY:O	4:B:1296:MES:H32	2.04	0.57
1:A:53:ILE:HD12	1:A:53:ILE:N	2.19	0.57
2:A:1294:N5Y:HAJ	5:A:2010:HOH:O	2.03	0.57
1:A:30:VAL:HG11	1:A:112:LEU:HD21	1.87	0.57
1:B:23:ILE:HD13	1:B:28:LEU:HD23	1.88	0.56
1:B:237:GLN:CD	1:D:237:GLN:OE1	2.43	0.56
1:A:23:ILE:HD12	1:C:23:ILE:HD12	1.88	0.56
1:D:256:ILE:HG23	2:D:1294:N5Y:HAX	1.89	0.55
1:A:23:ILE:HD13	1:A:28:LEU:HD23	1.88	0.54
1:A:237:GLN:OE1	1:C:237:GLN:CD	2.44	0.54
1:B:24:SER:HB2	1:B:59:ASP:CG	2.29	0.53
1:C:38:TYR:CB	1:C:112:LEU:HD22	2.39	0.53
1:C:38:TYR:CG	1:C:112:LEU:HD22	2.44	0.53
1:D:216:ILE:HG12	4:D:1296:MES:H21	1.91	0.53
1:A:154:GLY:O	4:A:1296:MES:H72	2.09	0.53
1:A:122:LEU:CD2	1:A:175:LEU:HD21	2.39	0.52
1:D:45:LEU:HD22	2:D:1294:N5Y:CAS	2.40	0.52
1:D:45:LEU:HD22	2:D:1294:N5Y:CAR	2.40	0.52
1:C:26:GLN:HB3	5:C:2010:HOH:O	2.09	0.52
1:C:25:LYS:HA	1:C:28:LEU:HD22	1.91	0.52
1:D:1:MET:HE3	1:D:1:MET:HA	1.92	0.52
1:B:23:ILE:HD12	1:D:23:ILE:CG1	2.39	0.52
1:C:110:ASP:HB2	1:C:226:THR:OG1	2.10	0.51
1:C:8:LEU:HD23	1:C:88:LEU:CD2	2.41	0.51
1:B:120:GLU:HG2	5:B:2039:HOH:O	2.11	0.51
1:D:154:GLY:O	4:D:1296:MES:C7	2.59	0.50
1:B:237:GLN:HG2	1:D:237:GLN:OE1	2.11	0.49
1:B:4:LYS:HE2	1:B:98:PHE:O	2.13	0.49
1:A:283:TYR:CZ	1:A:287:LEU:HD11	2.48	0.49
1:D:273:ALA:HB3	1:D:274:PRO:CD	2.43	0.48
1:C:23:ILE:CD1	1:C:28:LEU:HD12	2.27	0.48
1:D:234:GLU:HA	1:D:237:GLN:NE2	2.28	0.48

Continued on next page...

Continued from previous page...

Atom-1	Atom-2	Interatomic distance (Å)	Clash overlap (Å)
1:A:23:ILE:CB	1:C:23:ILE:HD12	2.43	0.48
1:D:154:GLY:O	4:D:1296:MES:H32	2.13	0.48
1:B:273:ALA:HB3	1:B:274:PRO:HD3	1.95	0.48
1:C:26:GLN:NE2	5:C:2011:HOH:O	2.46	0.48
1:B:237:GLN:HA	1:D:233:LEU:HD21	1.96	0.48
1:C:189:LEU:HB2	1:C:197:LEU:HD22	1.96	0.47
1:D:86:ASP:HB2	1:D:90:GLN:HE22	1.79	0.47
2:B:1294:N5Y:CAS	2:B:1294:N5Y:CAF	2.93	0.47
1:A:53:ILE:CD1	1:A:53:ILE:N	2.78	0.47
1:C:214:VAL:O	4:C:1296:MES:H71	2.15	0.46
1:B:24:SER:HB2	1:B:59:ASP:OD2	2.15	0.46
1:C:103:LEU:CD2	1:C:179:ASP:HA	2.46	0.46
1:A:233:LEU:HD11	1:C:237:GLN:HG3	1.97	0.46
2:B:1294:N5Y:HAS	2:B:1294:N5Y:CAF	2.46	0.46
1:D:216:ILE:CG1	4:D:1296:MES:H21	2.46	0.45
1:A:41:SER:HB3	1:A:256:ILE:CD1	2.46	0.45
1:C:23:ILE:O	1:C:23:ILE:HG23	2.16	0.45
1:B:273:ALA:HB3	1:B:274:PRO:CD	2.47	0.45
1:B:41:SER:HB3	1:B:256:ILE:CD1	2.46	0.45
1:B:237:GLN:CG	1:D:237:GLN:OE1	2.64	0.45
2:D:1294:N5Y:CAS	2:D:1294:N5Y:CAF	2.94	0.44
1:C:64:GLN:HG2	1:C:79:TYR:CD1	2.52	0.44
1:A:46:ALA:HB2	1:A:122:LEU:HD13	1.99	0.44
1:C:4:LYS:NZ	1:C:102:ASP:OD2	2.51	0.43
1:D:101:ASN:O	1:D:180:GLN:NE2	2.51	0.43
1:B:16:LEU:HD12	1:B:25:LYS:HD3	2.01	0.43
1:A:36:ILE:HG22	5:A:2006:HOH:O	2.18	0.43
1:A:23:ILE:HD12	1:C:23:ILE:CG2	2.37	0.43
1:B:23:ILE:HD12	1:D:23:ILE:HG12	2.01	0.43
1:C:1:MET:CE	1:C:129:GLN:HB3	2.48	0.43
1:C:234:GLU:HA	1:C:237:GLN:HE21	1.84	0.42
2:A:1294:N5Y:CAS	2:A:1294:N5Y:CAF	2.96	0.42
1:B:103:LEU:CD2	1:B:179:ASP:HA	2.48	0.42
1:C:103:LEU:HD22	1:C:179:ASP:HA	2.00	0.42
1:B:23:ILE:CD1	1:D:23:ILE:HD13	2.38	0.42
1:D:72:ASN:HB3	1:D:271:LEU:HD21	2.00	0.42
1:B:259:ARG:NH2	1:B:287:LEU:HD22	2.35	0.42
1:A:96:GLU:OE2	1:A:187:ARG:NH2	2.49	0.42
1:D:234:GLU:HA	1:D:237:GLN:HE21	1.85	0.42
1:D:115:GLY:HA3	1:D:221:TYR:CD1	2.54	0.42
1:B:234:GLU:HA	1:B:237:GLN:HE21	1.85	0.42

Continued on next page...

Continued from previous page...

Atom-1	Atom-2	Interatomic distance (Å)	Clash overlap (Å)
1:D:55:SER:OG	1:D:60:THR:HA	2.20	0.42
1:A:237:GLN:NE2	5:A:2071:HOH:O	2.53	0.41
1:A:27:LEU:HD11	1:A:62:ARG:HB2	2.02	0.41
1:D:41:SER:HB3	1:D:256:ILE:CD1	2.51	0.41
1:A:41:SER:HB3	1:A:256:ILE:HD13	2.03	0.41
2:D:1294:N5Y:HAS	2:D:1294:N5Y:CAF	2.50	0.41
1:C:60:THR:HB	1:C:61:PRO:HD3	2.02	0.41
1:B:51:ILE:HB	1:B:77:LEU:HD23	2.03	0.41
2:A:1294:N5Y:HAA3	2:A:1294:N5Y:HAP2	1.85	0.40
1:A:23:ILE:HD13	1:A:28:LEU:CD2	2.52	0.40

There are no symmetry-related clashes.

5.3 Torsion angles

5.3.1 Protein backbone

In the following table, the Percentiles column shows the percent Ramachandran outliers of the chain as a percentile score with respect to all X-ray entries followed by that with respect to entries of similar resolution.

The Analysed column shows the number of residues for which the backbone conformation was analysed, and the total number of residues.

Mol	Chain	Analysed	Favoured	Allowed	Outliers	Percentiles	
1	A	291/293 (99%)	287 (99%)	4 (1%)	0	100	100
1	B	290/293 (99%)	284 (98%)	5 (2%)	1 (0%)	46	57
1	C	291/293 (99%)	287 (99%)	4 (1%)	0	100	100
1	D	291/293 (99%)	285 (98%)	6 (2%)	0	100	100
All	All	1163/1172 (99%)	1143 (98%)	19 (2%)	1 (0%)	56	68

All (1) Ramachandran outliers are listed below:

Mol	Chain	Res	Type
1	B	31	TYR

5.3.2 Protein sidechains ⓘ

In the following table, the Percentiles column shows the percent sidechain outliers of the chain as a percentile score with respect to all X-ray entries followed by that with respect to entries of similar resolution.

The Analysed column shows the number of residues for which the sidechain conformation was analysed, and the total number of residues.

Mol	Chain	Analysed	Rotameric	Outliers	Percentiles	
1	A	240/240 (100%)	234 (98%)	6 (2%)	55	73
1	B	239/240 (100%)	232 (97%)	7 (3%)	50	66
1	C	240/240 (100%)	231 (96%)	9 (4%)	40	54
1	D	240/240 (100%)	231 (96%)	9 (4%)	40	54
All	All	959/960 (100%)	928 (97%)	31 (3%)	46	62

All (31) residues with a non-rotameric sidechain are listed below:

Mol	Chain	Res	Type
1	A	23	ILE
1	A	58	GLN
1	A	117	ASP
1	A	120	GLU
1	A	127	GLN
1	A	232	LEU
1	B	2	LYS
1	B	117	ASP
1	B	127	GLN
1	B	128	ARG
1	B	190	LYS
1	B	225	ASP
1	B	232	LEU
1	C	2	LYS
1	C	23	ILE
1	C	28	LEU
1	C	117	ASP
1	C	126	SER
1	C	127	GLN
1	C	232	LEU
1	C	275	LEU
1	C	277	LYS
1	D	1	MET
1	D	24	SER

Continued on next page...

Continued from previous page...

Mol	Chain	Res	Type
1	D	101	ASN
1	D	117	ASP
1	D	127	GLN
1	D	187	ARG
1	D	190	LYS
1	D	232	LEU
1	D	277	LYS

Some sidechains can be flipped to improve hydrogen bonding and reduce clashes. All (6) such sidechains are listed below:

Mol	Chain	Res	Type
1	A	58	GLN
1	A	101	ASN
1	B	17	HIS
1	C	229	HIS
1	D	17	HIS
1	D	152	GLN

5.3.3 RNA [i](#)

There are no RNA molecules in this entry.

5.4 Non-standard residues in protein, DNA, RNA chains [i](#)

There are no non-standard protein/DNA/RNA residues in this entry.

5.5 Carbohydrates [i](#)

There are no carbohydrates in this entry.

5.6 Ligand geometry [i](#)

Of 12 ligands modelled in this entry, 4 are monoatomic - leaving 8 for Mogul analysis.

In the following table, the Counts columns list the number of bonds (or angles) for which Mogul statistics could be retrieved, the number of bonds (or angles) that are observed in the model and the number of bonds (or angles) that are defined in the chemical component dictionary. The Link column lists molecule types, if any, to which the group is linked. The Z score for a bond length (or angle) is the number of standard deviations the observed value is removed from the expected

value. A bond length (or angle) with $|Z| > 2$ is considered an outlier worth inspection. RMSZ is the root-mean-square of all Z scores of the bond lengths (or angles).

Mol	Type	Chain	Res	Link	Bond lengths			Bond angles		
					Counts	RMSZ	# $ Z > 2$	Counts	RMSZ	# $ Z > 2$
2	N5Y	A	1294	-	23,28,28	2.21	4 (17%)	28,39,39	2.08	5 (17%)
4	MES	A	1296	-	11,12,12	0.75	0	14,16,16	1.08	0
2	N5Y	B	1294	-	23,28,28	2.03	4 (17%)	28,39,39	1.95	6 (21%)
4	MES	B	1296	-	11,12,12	0.85	0	14,16,16	1.18	0
2	N5Y	C	1294	-	23,28,28	2.24	4 (17%)	28,39,39	2.14	5 (17%)
4	MES	C	1296	-	11,12,12	0.77	0	14,16,16	1.84	2 (14%)
2	N5Y	D	1294	-	23,28,28	2.01	4 (17%)	28,39,39	1.95	5 (17%)
4	MES	D	1296	-	11,12,12	0.71	0	14,16,16	1.81	2 (14%)

In the following table, the Chirals column lists the number of chiral outliers, the number of chiral centers analysed, the number of these observed in the model and the number defined in the chemical component dictionary. Similar counts are reported in the Torsion and Rings columns. '-' means no outliers of that kind were identified.

Mol	Type	Chain	Res	Link	Chirals	Torsions	Rings
2	N5Y	A	1294	-	-	0/16/16/16	0/3/3/3
4	MES	A	1296	-	-	0/6/14/14	0/1/1/1
2	N5Y	B	1294	-	-	0/16/16/16	0/3/3/3
4	MES	B	1296	-	-	0/6/14/14	0/1/1/1
2	N5Y	C	1294	-	-	0/16/16/16	0/3/3/3
4	MES	C	1296	-	-	0/6/14/14	0/1/1/1
2	N5Y	D	1294	-	-	0/16/16/16	0/3/3/3
4	MES	D	1296	-	-	0/6/14/14	0/1/1/1

All (16) bond length outliers are listed below:

Mol	Chain	Res	Type	Atoms	Z	Observed(Å)	Ideal(Å)
2	C	1294	N5Y	CAT-CA0	-7.06	1.38	1.50
2	A	1294	N5Y	CAT-CA0	-5.92	1.40	1.50
2	D	1294	N5Y	CAT-CA0	-5.62	1.41	1.50
2	A	1294	N5Y	CAF-NAG	-5.32	1.35	1.45
2	D	1294	N5Y	CAU-CAV	-5.04	1.39	1.51
2	B	1294	N5Y	CAT-CA0	-4.96	1.42	1.50
2	B	1294	N5Y	CAF-NAG	-4.90	1.36	1.45
2	C	1294	N5Y	CAF-NAG	-4.56	1.36	1.45
2	B	1294	N5Y	CAU-CAV	-4.51	1.40	1.51
2	D	1294	N5Y	CAF-NAG	-4.43	1.37	1.45
2	C	1294	N5Y	CAU-CAV	-4.40	1.40	1.51

Continued on next page...

Continued from previous page...

Mol	Chain	Res	Type	Atoms	Z	Observed(Å)	Ideal(Å)
2	A	1294	N5Y	CAU-CAV	-4.20	1.41	1.51
2	D	1294	N5Y	CAE-NAD	3.15	1.39	1.33
2	C	1294	N5Y	CAE-NAD	4.21	1.40	1.33
2	B	1294	N5Y	CAE-NAD	4.49	1.41	1.33
2	A	1294	N5Y	CAE-NAD	4.70	1.41	1.33

All (25) bond angle outliers are listed below:

Mol	Chain	Res	Type	Atoms	Z	Observed(°)	Ideal(°)
2	C	1294	N5Y	CAF-CAE-NAD	-4.40	116.70	123.46
2	A	1294	N5Y	CAF-CAE-NAD	-4.14	117.09	123.46
2	D	1294	N5Y	CAF-CAE-NAD	-3.69	117.79	123.46
2	A	1294	N5Y	CAF-CAO-NAP	-3.68	116.99	124.49
2	C	1294	N5Y	CAF-CAO-NAP	-3.65	117.05	124.49
2	B	1294	N5Y	CAF-CAE-NAD	-3.55	118.00	123.46
2	B	1294	N5Y	CAF-CAO-NAP	-3.42	117.51	124.49
4	D	1296	MES	O2S-S-C8	-3.19	104.18	106.91
2	D	1294	N5Y	CAF-CAO-NAP	-3.05	118.28	124.49
2	B	1294	N5Y	CAA-NAG-CA0	-2.34	113.94	118.78
2	B	1294	N5Y	OAC-CA0-NAG	-2.22	118.17	121.47
2	D	1294	N5Y	CAA-NAG-CA0	-2.22	114.19	118.78
2	A	1294	N5Y	CAU-CAV-CAW	2.03	124.48	120.40
2	C	1294	N5Y	CAU-CAV-CAW	2.10	124.62	120.40
4	C	1296	MES	O1S-S-C8	2.60	109.13	106.91
4	D	1296	MES	C6-C5-N4	4.16	116.43	110.12
2	D	1294	N5Y	CAE-CAF-CAO	4.69	119.06	114.57
2	A	1294	N5Y	CAE-NAD-CAM	4.95	119.53	115.25
2	B	1294	N5Y	CAE-CAF-CAO	5.22	119.57	114.57
2	C	1294	N5Y	CAE-CAF-CAO	5.23	119.58	114.57
2	B	1294	N5Y	CAE-NAD-CAM	5.37	119.89	115.25
4	C	1296	MES	O2S-S-C8	5.42	111.53	106.91
2	A	1294	N5Y	CAE-CAF-CAO	6.34	120.64	114.57
2	D	1294	N5Y	CAE-NAD-CAM	6.35	120.74	115.25
2	C	1294	N5Y	CAE-NAD-CAM	7.28	121.54	115.25

There are no chirality outliers.

There are no torsion outliers.

There are no ring outliers.

7 monomers are involved in 20 short contacts:

Mol	Chain	Res	Type	Clashes	Symm-Clashes
2	A	1294	N5Y	3	0
4	A	1296	MES	2	0
2	B	1294	N5Y	2	0
4	B	1296	MES	1	0
4	C	1296	MES	1	0
2	D	1294	N5Y	6	0
4	D	1296	MES	5	0

5.7 Other polymers [i](#)

There are no such residues in this entry.

5.8 Polymer linkage issues [i](#)

There are no chain breaks in this entry.

6 Fit of model and data

6.1 Protein, DNA and RNA chains

In the following table, the column labelled ‘#RSRZ> 2’ contains the number (and percentage) of RSRZ outliers, followed by percent RSRZ outliers for the chain as percentile scores relative to all X-ray entries and entries of similar resolution. The OWAB column contains the minimum, median, 95th percentile and maximum values of the occupancy-weighted average B-factor per residue. The column labelled ‘Q< 0.9’ lists the number of (and percentage) of residues with an average occupancy less than 0.9.

Mol	Chain	Analysed	<RSRZ>	#RSRZ>2	OWAB(Å ²)	Q<0.9
1	A	293/293 (100%)	0.56	14 (4%) 34 43	30, 43, 66, 79	2 (0%)
1	B	292/293 (99%)	0.66	24 (8%) 14 20	30, 45, 69, 88	1 (0%)
1	C	293/293 (100%)	0.62	18 (6%) 25 33	30, 43, 66, 91	3 (1%)
1	D	293/293 (100%)	0.63	27 (9%) 11 16	31, 44, 68, 88	3 (1%)
All	All	1171/1172 (99%)	0.62	83 (7%) 19 26	30, 44, 67, 91	9 (0%)

All (83) RSRZ outliers are listed below:

Mol	Chain	Res	Type	RSRZ
1	C	193	PRO	6.3
1	D	275	LEU	5.4
1	C	15	ARG	4.9
1	D	274	PRO	4.7
1	B	12	SER	4.7
1	A	277	LYS	4.4
1	C	194	ARG	4.3
1	B	152	GLN	4.2
1	D	193	PRO	4.1
1	D	267	GLN	4.0
1	B	193	PRO	3.8
1	C	192	SER	3.7
1	D	152	GLN	3.7
1	B	23	ILE	3.6
1	B	237	GLN	3.6
1	C	1	MET	3.6
1	A	23	ILE	3.5
1	C	237	GLN	3.5
1	A	11	GLY	3.4
1	D	22	ALA	3.4
1	D	195	GLY	3.4

Continued on next page...

Continued from previous page...

Mol	Chain	Res	Type	RSRZ
1	D	271	LEU	3.3
1	D	268	LEU	3.3
1	A	237	GLN	3.3
1	D	277	LYS	3.3
1	D	237	GLN	3.2
1	C	224	LEU	3.1
1	A	13	GLY	3.1
1	B	11	GLY	3.1
1	D	273	ALA	3.1
1	D	289	THR	3.1
1	C	275	LEU	3.0
1	D	288	LEU	3.0
1	D	11	GLY	3.0
1	D	23	ILE	3.0
1	C	285	LYS	2.9
1	B	277	LYS	2.9
1	D	65	GLN	2.9
1	B	275	LEU	2.9
1	D	270	LYS	2.9
1	D	192	SER	2.9
1	C	195	GLY	2.8
1	B	84	SER	2.8
1	A	275	LEU	2.7
1	B	22	ALA	2.7
1	B	13	GLY	2.7
1	C	278	ASN	2.6
1	A	2	LYS	2.6
1	A	119	HIS	2.6
1	C	266	ALA	2.6
1	A	127	GLN	2.6
1	C	225	ASP	2.6
1	A	288	LEU	2.5
1	B	225	ASP	2.5
1	D	157	ILE	2.5
1	D	269	GLU	2.5
1	C	197	LEU	2.5
1	D	225	ASP	2.5
1	D	272	ALA	2.4
1	B	282	GLN	2.4
1	C	277	LYS	2.3
1	B	186	ALA	2.3
1	B	14	THR	2.3

Continued on next page...

Continued from previous page...

Mol	Chain	Res	Type	RSRZ
1	B	83	PRO	2.2
1	A	12	SER	2.2
1	C	12	SER	2.2
1	D	72	ASN	2.2
1	B	232	LEU	2.2
1	D	164	LEU	2.2
1	B	194	ARG	2.1
1	B	289	THR	2.1
1	D	265	ALA	2.1
1	C	276	ALA	2.1
1	A	165	GLU	2.1
1	B	197	LEU	2.1
1	B	233	LEU	2.1
1	A	22	ALA	2.1
1	B	224	LEU	2.1
1	C	152	GLN	2.1
1	B	164	LEU	2.0
1	B	236	GLY	2.0
1	A	233	LEU	2.0
1	D	224	LEU	2.0

6.2 Non-standard residues in protein, DNA, RNA chains [i](#)

There are no non-standard protein/DNA/RNA residues in this entry.

6.3 Carbohydrates [i](#)

There are no carbohydrates in this entry.

6.4 Ligands [i](#)

In the following table, the Atoms column lists the number of modelled atoms in the group and the number defined in the chemical component dictionary. LLDF column lists the quality of electron density of the group with respect to its neighbouring residues in protein, DNA or RNA chains. The B-factors column lists the minimum, median, 95th percentile and maximum values of B factors of atoms in the group. The column labelled 'Q< 0.9' lists the number of atoms with occupancy less than 0.9.

Mol	Type	Chain	Res	Atoms	RSCC	RSR	LLDF	B-factors(Å ²)	Q<0.9
3	CL	C	1295	1/1	0.98	0.20	2.22	43,43,43,43	0

Continued on next page...

Continued from previous page...

Mol	Type	Chain	Res	Atoms	RSCC	RSR	LLDF	B-factors(\AA^2)	Q<0.9
4	MES	A	1296	12/12	0.92	0.18	2.16	57,63,66,69	0
3	CL	B	1295	1/1	0.97	0.20	2.13	46,46,46,46	0
2	N5Y	C	1294	26/26	0.87	0.21	2.01	41,48,56,58	0
3	CL	D	1295	1/1	0.99	0.19	1.60	40,40,40,40	0
4	MES	C	1296	12/12	0.89	0.20	1.58	54,59,71,71	0
2	N5Y	D	1294	26/26	0.83	0.18	1.51	42,51,56,57	0
2	N5Y	B	1294	26/26	0.85	0.19	1.21	42,46,53,56	0
2	N5Y	A	1294	26/26	0.84	0.20	0.99	43,51,56,59	0
4	MES	D	1296	12/12	0.93	0.17	0.34	46,48,50,57	0
4	MES	B	1296	12/12	0.94	0.17	-0.20	42,50,51,52	0
3	CL	A	1295	1/1	0.99	0.14	-1.50	41,41,41,41	0

6.5 Other polymers [i](#)

There are no such residues in this entry.