



# wwPDB X-ray Structure Validation Summary Report ⓘ

Feb 1, 2016 – 07:27 AM GMT

PDB ID : 3AVY  
Title : Structure of viral RNA polymerase complex 6  
Authors : Takeshita, D.; Tomita, K.  
Deposited on : 2011-03-08  
Resolution : 2.62 Å(reported)

This is a wwPDB X-ray Structure Validation Summary Report for a publicly released PDB entry.  
We welcome your comments at [validation@mail.wwpdb.org](mailto:validation@mail.wwpdb.org)  
A user guide is available at  
<http://wwpdb.org/validation/2016/XrayValidationReportHelp>  
with specific help available everywhere you see the ⓘ symbol.

---

The following versions of software and data (see [references ⓘ](#)) were used in the production of this report:

MolProbity : 4.02b-467  
Mogul : 1.7 (RC4), CSD as536be (2015)  
Xtriage (Phenix) : 1.9-1692  
EDS : rb-20026688  
Percentile statistics : 20151230.v01 (using entries in the PDB archive December 30th 2015)  
Refmac : 5.8.0135  
CCP4 : 6.5.0  
Ideal geometry (proteins) : Engh & Huber (2001)  
Ideal geometry (DNA, RNA) : Parkinson et al. (1996)  
Validation Pipeline (wwPDB-VP) : trunk26865

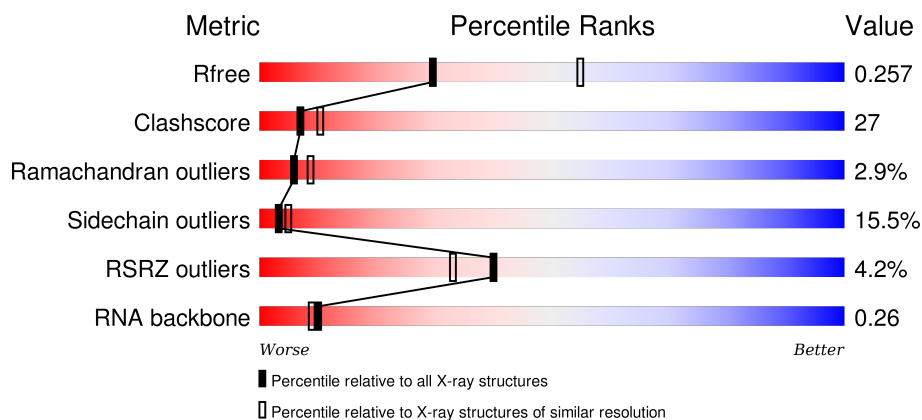
# 1 Overall quality at a glance

The following experimental techniques were used to determine the structure:

*X-RAY DIFFRACTION*

The reported resolution of this entry is 2.62 Å.

Percentile scores (ranging between 0-100) for global validation metrics of the entry are shown in the following graphic. The table shows the number of entries on which the scores are based.



Metric	Whole archive (#Entries)	Similar resolution (#Entries, resolution range(Å))
$R_{free}$	91344	2700 (2.64-2.60)
Clashscore	102246	3065 (2.64-2.60)
Ramachandran outliers	100387	3015 (2.64-2.60)
Sidechain outliers	100360	3015 (2.64-2.60)
RSRZ outliers	91569	2706 (2.64-2.60)
RNA backbone	2183	1036 (3.04-2.20)

The table below summarises the geometric issues observed across the polymeric chains and their fit to the electron density. The red, orange, yellow and green segments on the lower bar indicate the fraction of residues that contain outliers for  $\geq 3$ , 2, 1 and 0 types of geometric quality criteria. A grey segment represents the fraction of residues that are not modelled. The numeric value for each fraction is indicated below the corresponding segment, with a dot representing fractions  $\leq 5\%$ . The upper red bar (where present) indicates the fraction of residues that have poor fit to the electron density. The numeric value is given above the bar.

Mol	Chain	Length	Quality of chain
1	A	1289	
2	G	13	
3	T	18	

## 2 Entry composition

There are 6 unique types of molecules in this entry. The entry contains 9871 atoms, of which 0 are hydrogens and 0 are deuteriums.

In the tables below, the ZeroOcc column contains the number of atoms modelled with zero occupancy, the AltConf column contains the number of residues with at least one atom in alternate conformation and the Trace column contains the number of residues modelled with at most 2 atoms.

- Molecule 1 is a protein called Elongation factor Ts, Elongation factor Tu, LINKER, Q beta replicase.

Mol	Chain	Residues	Atoms					ZeroOcc	AltConf	Trace
1	A	1203	Total	C	N	O	S	0	0	0
			9287	5865	1605	1772	45			

There are 7 discrepancies between the modelled and reference sequences:

Chain	Residue	Modelled	Actual	Comment	Reference
A	284	HIS	-	LINKER	UNP P0A6P3
A	1284	HIS	-	EXPRESSION TAG	UNP Q8LTE0
A	1285	HIS	-	EXPRESSION TAG	UNP Q8LTE0
A	1286	HIS	-	EXPRESSION TAG	UNP Q8LTE0
A	1287	HIS	-	EXPRESSION TAG	UNP Q8LTE0
A	1288	HIS	-	EXPRESSION TAG	UNP Q8LTE0
A	1289	HIS	-	EXPRESSION TAG	UNP Q8LTE0

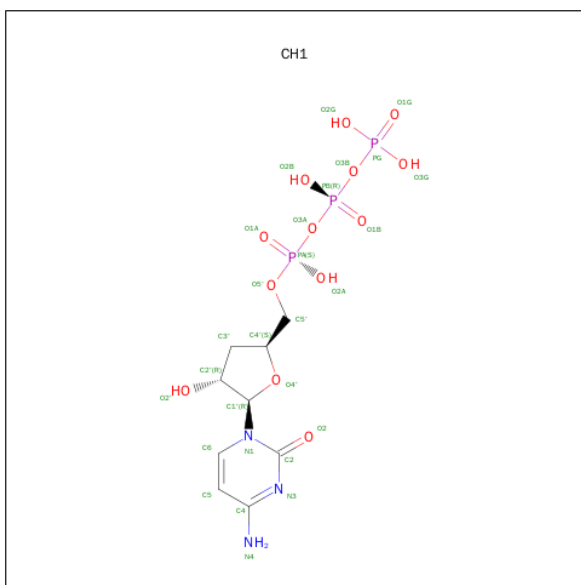
- Molecule 2 is a RNA chain called RNA (5'-R(\*GP\*GP\*GP\*UP\*CP\*CP\*AP\*UP\*AP\*AP\*AP\*AP\*U)-3').

Mol	Chain	Residues	Atoms					ZeroOcc	AltConf	Trace
2	G	8	Total	C	N	O	P	0	0	0
			169	77	32	52	8			

- Molecule 3 is a RNA chain called RNA (5'-R(\*AP\*AP\*CP\*GP\*AP\*UP\*UP\*UP\*UP\*AP\*UP\*GP\*GP\*AP\*CP\*CP\*CP\*A)-3').

Mol	Chain	Residues	Atoms					ZeroOcc	AltConf	Trace
3	T	14	Total	C	N	O	P	0	0	0
			297	133	51	99	14			

- Molecule 4 is 3'-DEOXY-CYTIDINE-5'-TRIPHOSPHATE (three-letter code: CH1) (formula: C<sub>9</sub>H<sub>16</sub>N<sub>3</sub>O<sub>13</sub>P<sub>3</sub>).



Mol	Chain	Residues	Atoms					ZeroOcc	AltConf
4	A	1	Total	C	N	O	P	0	0
			28	9	3	13	3		

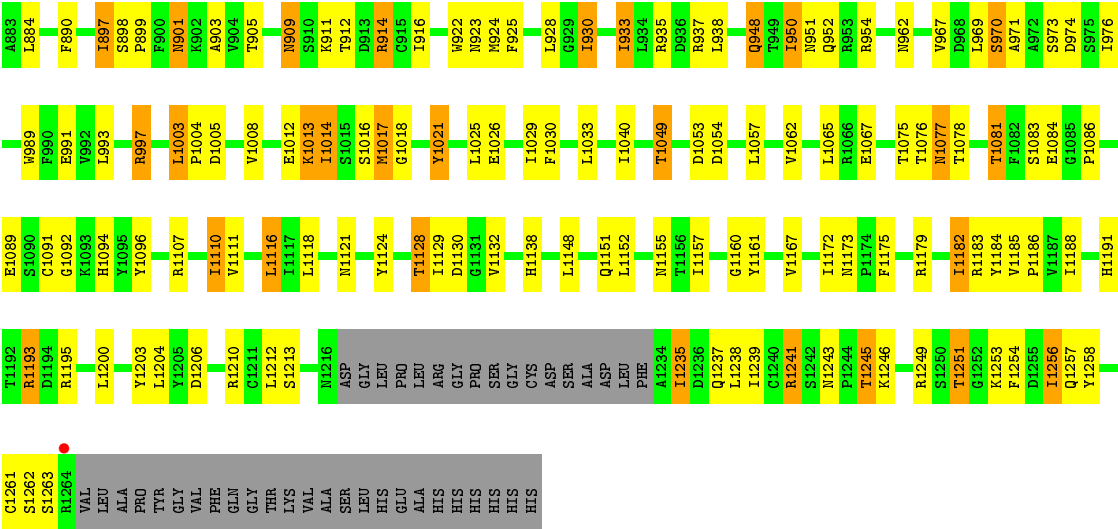
- Molecule 5 is CALCIUM ION (three-letter code: CA) (formula: Ca).

Mol	Chain	Residues	Atoms	ZeroOcc	AltConf
5	A	2	Total Ca 2 2	0	0

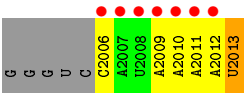
- Molecule 6 is water.

Mol	Chain	Residues	Atoms	ZeroOcc	AltConf
6	A	85	Total O 85 85	0	0
6	T	3	Total O 3 3	0	0

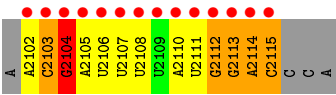
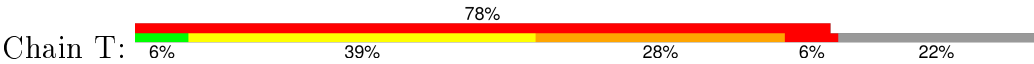




● Molecule 2: RNA (5'-R(\*GP\*GP\*GP\*UP\*CP\*CP\*AP\*UP\*AP\*AP\*AP\*U)-3')



● Molecule 3: RNA (5'-R(\*AP\*AP\*CP\*GP\*AP\*UP\*UP\*UP\*UP\*AP\*UP\*GP\*GP\*AP\*CP\*CP\*CP\*A)-3')



## 4 Data and refinement statistics

Property	Value	Source
Space group	C 2 2 21	Depositor
Cell constants a, b, c, $\alpha$ , $\beta$ , $\gamma$	140.07Å 257.22Å 101.31Å 90.00° 90.00° 90.00°	Depositor
Resolution (Å)	19.99 – 2.62 48.29 – 2.61	Depositor EDS
% Data completeness (in resolution range)	97.3 (19.99-2.62) 99.4 (48.29-2.61)	Depositor EDS
$R_{merge}$	(Not available)	Depositor
$R_{sym}$	(Not available)	Depositor
$\langle I/\sigma(I) \rangle$ <sup>1</sup>	2.84 (at 2.61Å)	Xtriage
Refinement program	PHENIX (phenix.refine: 1.6.4_486)	Depositor
R, $R_{free}$	0.214 , 0.262 0.212 , 0.257	Depositor DCC
$R_{free}$ test set	2807 reflections (5.37%)	DCC
Wilson B-factor (Å <sup>2</sup> )	48.1	Xtriage
Anisotropy	0.381	Xtriage
Bulk solvent $k_{sol}$ (e/Å <sup>3</sup> ), $B_{sol}$ (Å <sup>2</sup> )	0.30 , 40.6	EDS
Estimated twinning fraction	0.017 for 1/2*h-1/2*k,-3/2*h-1/2*k,-l 0.022 for 1/2*h+1/2*k,3/2*h-1/2*k,-l	Xtriage
L-test for twinning <sup>2</sup>	$\langle  L  \rangle = 0.47$ , $\langle L^2 \rangle = 0.30$	Xtriage
Outliers	0 of 55278 reflections	Xtriage
$F_o, F_c$ correlation	0.93	EDS
Total number of atoms	9871	wwPDB-VP
Average B, all atoms (Å <sup>2</sup> )	51.0	wwPDB-VP

Xtriage's analysis on translational NCS is as follows: *The largest off-origin peak in the Patterson function is 2.76% of the height of the origin peak. No significant pseudotranslation is detected.*

<sup>1</sup> Intensities estimated from amplitudes.

<sup>2</sup> Theoretical values of  $\langle |L| \rangle$ ,  $\langle L^2 \rangle$  for acentric reflections are 0.5, 0.375 respectively for untwinned datasets, and 0.333, 0.2 for perfectly twinned datasets.

## 5 Model quality [i](#)

### 5.1 Standard geometry [i](#)

Bond lengths and bond angles in the following residue types are not validated in this section: CH1, CA

The Z score for a bond length (or angle) is the number of standard deviations the observed value is removed from the expected value. A bond length (or angle) with  $|Z| > 5$  is considered an outlier worth inspection. RMSZ is the root-mean-square of all Z scores of the bond lengths (or angles).

Mol	Chain	Bond lengths		Bond angles	
		RMSZ	# Z  >5	RMSZ	# Z  >5
1	A	0.48	0/9456	0.63	0/12787
2	G	0.50	0/189	0.80	1/291 (0.3%)
3	T	0.59	0/331	0.92	1/513 (0.2%)
All	All	0.49	0/9976	0.64	2/13591 (0.0%)

There are no bond length outliers.

All (2) bond angle outliers are listed below:

Mol	Chain	Res	Type	Atoms	Z	Observed(°)	Ideal(°)
2	G	2013	U	O4'-C1'-N1	5.40	112.52	108.20
3	T	2104	G	C8-N9-C4	-5.34	104.26	106.40

There are no chirality outliers.

There are no planarity outliers.

### 5.2 Too-close contacts [i](#)

In the following table, the Non-H and H(model) columns list the number of non-hydrogen atoms and hydrogen atoms in the chain respectively. The H(added) column lists the number of hydrogen atoms added and optimized by MolProbity. The Clashes column lists the number of clashes within the asymmetric unit, whereas Symm-Clashes lists symmetry related clashes.

Mol	Chain	Non-H	H(model)	H(added)	Clashes	Symm-Clashes
1	A	9287	0	9273	492	0
2	G	169	0	85	12	0
3	T	297	0	150	32	0
4	A	28	0	12	6	0
5	A	2	0	0	0	0
6	A	85	0	0	2	0

*Continued on next page...*



*Continued from previous page...*

Mol	Chain	Non-H	H(model)	H(added)	Clashes	Symm-Clashes
6	T	3	0	0	0	0
All	All	9871	0	9520	512	0

The all-atom clashscore is defined as the number of clashes found per 1000 atoms (including hydrogen atoms). The all-atom clashscore for this structure is 27.

The worst 5 of 512 close contacts within the same asymmetric unit are listed below, sorted by their clash magnitude.

Atom-1	Atom-2	Interatomic distance (Å)	Clash overlap (Å)
1:A:930:ILE:HD11	1:A:1021:TYR:HD1	1.13	1.12
1:A:858:ARG:HG3	1:A:858:ARG:HH11	1.15	1.08
1:A:930:ILE:HD11	1:A:1021:TYR:CD1	1.87	1.07
3:T:2104:G:H2'	3:T:2105:A:C8	1.93	1.03
1:A:79:GLN:HE21	1:A:129:ASN:H	1.03	0.94

There are no symmetry-related clashes.

## 5.3 Torsion angles [i](#)

### 5.3.1 Protein backbone [i](#)

In the following table, the Percentiles column shows the percent Ramachandran outliers of the chain as a percentile score with respect to all X-ray entries followed by that with respect to entries of similar resolution.

The Analysed column shows the number of residues for which the backbone conformation was analysed, and the total number of residues.

Mol	Chain	Analysed	Favoured	Allowed	Outliers	Percentiles
1	A	1193/1289 (93%)	1058 (89%)	100 (8%)	35 (3%)	<b>6</b> <b>9</b>

5 of 35 Ramachandran outliers are listed below:

Mol	Chain	Res	Type
1	A	3	GLU
1	A	34	ILE
1	A	104	LYS
1	A	188	ALA
1	A	323	THR

### 5.3.2 Protein sidechains [i](#)

In the following table, the Percentiles column shows the percent sidechain outliers of the chain as a percentile score with respect to all X-ray entries followed by that with respect to entries of similar resolution.

The Analysed column shows the number of residues for which the sidechain conformation was analysed, and the total number of residues.

Mol	Chain	Analysed	Rotameric	Outliers	Percentiles
1	A	995/1060 (94%)	841 (84%)	154 (16%)	<b>3</b> <b>5</b>

5 of 154 residues with a non-rotameric sidechain are listed below:

Mol	Chain	Res	Type
1	A	642	LYS
1	A	808	ASP
1	A	1138	HIS
1	A	655	ASP
1	A	737	GLN

Some sidechains can be flipped to improve hydrogen bonding and reduce clashes. 5 of 27 such sidechains are listed below:

Mol	Chain	Res	Type
1	A	714	ASN
1	A	862	HIS
1	A	1151	GLN
1	A	729	ASN
1	A	90	GLN

### 5.3.3 RNA [i](#)

Mol	Chain	Analysed	Backbone Outliers	Pucker Outliers
2	G	6/13 (46%)	0	0
3	T	13/18 (72%)	6 (46%)	0
All	All	19/31 (61%)	6 (31%)	0

5 of 6 RNA backbone outliers are listed below:

Mol	Chain	Res	Type
3	T	2103	C
3	T	2104	G
3	T	2112	G

*Continued on next page...*

*Continued from previous page...*

Mol	Chain	Res	Type
3	T	2113	G
3	T	2114	A

There are no RNA pucker outliers to report.

## 5.4 Non-standard residues in protein, DNA, RNA chains [i](#)

There are no non-standard protein/DNA/RNA residues in this entry.

## 5.5 Carbohydrates [i](#)

There are no carbohydrates in this entry.

## 5.6 Ligand geometry [i](#)

Of 3 ligands modelled in this entry, 2 are monoatomic - leaving 1 for Mogul analysis.

In the following table, the Counts columns list the number of bonds (or angles) for which Mogul statistics could be retrieved, the number of bonds (or angles) that are observed in the model and the number of bonds (or angles) that are defined in the chemical component dictionary. The Link column lists molecule types, if any, to which the group is linked. The Z score for a bond length (or angle) is the number of standard deviations the observed value is removed from the expected value. A bond length (or angle) with  $|Z| > 2$  is considered an outlier worth inspection. RMSZ is the root-mean-square of all Z scores of the bond lengths (or angles).

Mol	Type	Chain	Res	Link	Bond lengths			Bond angles		
					Counts	RMSZ	$\# Z  > 2$	Counts	RMSZ	$\# Z  > 2$
4	CH1	A	2501	5	21,29,29	1.82	4 (19%)	27,45,45	1.80	6 (22%)

In the following table, the Chirals column lists the number of chiral outliers, the number of chiral centers analysed, the number of these observed in the model and the number defined in the chemical component dictionary. Similar counts are reported in the Torsion and Rings columns. '-' means no outliers of that kind were identified.

Mol	Type	Chain	Res	Link	Chirals	Torsions	Rings
4	CH1	A	2501	5	-	0/18/34/34	0/2/2/2

All (4) bond length outliers are listed below:

Mol	Chain	Res	Type	Atoms	Z	Observed(Å)	Ideal(Å)
4	A	2501	CH1	C2'-C1'	-5.78	1.44	1.53
4	A	2501	CH1	C3'-C4'	-3.83	1.43	1.52
4	A	2501	CH1	C3'-C2'	-2.11	1.47	1.52
4	A	2501	CH1	C4-N4	3.36	1.45	1.35

The worst 5 of 6 bond angle outliers are listed below:

Mol	Chain	Res	Type	Atoms	Z	Observed(°)	Ideal(°)
4	A	2501	CH1	PB-O3A-PA	-3.09	124.06	132.73
4	A	2501	CH1	C5-C4-N3	-2.02	119.25	121.80
4	A	2501	CH1	O3A-PA-O5'	2.47	109.49	102.94
4	A	2501	CH1	O4'-C4'-C5'	2.95	113.89	109.54
4	A	2501	CH1	C2-N3-C4	4.05	121.32	115.61

There are no chirality outliers.

There are no torsion outliers.

There are no ring outliers.

1 monomer is involved in 6 short contacts:

Mol	Chain	Res	Type	Clashes	Symm-Clashes
4	A	2501	CH1	6	0

## 5.7 Other polymers [i](#)

There are no such residues in this entry.

## 5.8 Polymer linkage issues [i](#)

There are no chain breaks in this entry.

## 6 Fit of model and data [i](#)

### 6.1 Protein, DNA and RNA chains [i](#)

In the following table, the column labelled ‘#RSRZ> 2’ contains the number (and percentage) of RSRZ outliers, followed by percent RSRZ outliers for the chain as percentile scores relative to all X-ray entries and entries of similar resolution. The OWAB column contains the minimum, median, 95<sup>th</sup> percentile and maximum values of the occupancy-weighted average B-factor per residue. The column labelled ‘Q< 0.9’ lists the number of (and percentage) of residues with an average occupancy less than 0.9.

Mol	Chain	Analysed	<RSRZ>	#RSRZ>2	OWAB(Å <sup>2</sup> )	Q<0.9
1	A	1203/1289 (93%)	-0.07	30 (2%) 61 55	16, 44, 90, 112	0
2	G	8/13 (61%)	4.87	7 (87%) 0 0	77, 113, 134, 140	0
3	T	14/18 (77%)	6.97	14 (100%) 0 0	86, 106, 118, 128	0
All	All	1225/1320 (92%)	0.05	51 (4%) 40 33	16, 45, 95, 140	0

The worst 5 of 51 RSRZ outliers are listed below:

Mol	Chain	Res	Type	RSRZ
3	T	2114	A	13.2
3	T	2112	G	11.3
3	T	2113	G	10.8
3	T	2104	G	10.1
2	G	2008	U	8.4

### 6.2 Non-standard residues in protein, DNA, RNA chains [i](#)

There are no non-standard protein/DNA/RNA residues in this entry.

### 6.3 Carbohydrates [i](#)

There are no carbohydrates in this entry.

### 6.4 Ligands [i](#)

In the following table, the Atoms column lists the number of modelled atoms in the group and the number defined in the chemical component dictionary. LLDF column lists the quality of electron density of the group with respect to its neighbouring residues in protein, DNA or RNA chains. The B-factors column lists the minimum, median, 95<sup>th</sup> percentile and maximum values of B factors

of atoms in the group. The column labelled 'Q< 0.9' lists the number of atoms with occupancy less than 0.9.

Mol	Type	Chain	Res	Atoms	RSCC	RSR	LLDF	B-factors( $\text{\AA}^2$ )	Q<0.9
4	CH1	A	2501	28/28	0.89	0.19	-0.11	33,60,77,83	0
5	CA	A	3001	1/1	0.97	0.17	-	42,42,42,42	0
5	CA	A	3002	1/1	0.98	0.22	-	46,46,46,46	0

## 6.5 Other polymers [i](#)

There are no such residues in this entry.