



Full wwPDB X-ray Structure Validation Report ⓘ

Feb 1, 2016 – 02:54 PM GMT

PDB ID : 4AVL
Title : Influenza strain pH1N1 2009 polymerase subunit PA endonuclease in complex with dTMP
Authors : Kowalinski, E.; Zubieta, C.; Wolkerstorfer, A.; Szolar, O.H.J.; Ruigrok, R.W.H.; Cusack, S.
Deposited on : 2012-05-28
Resolution : 1.87 Å(reported)

This is a Full wwPDB X-ray Structure Validation Report for a publicly released PDB entry.
We welcome your comments at validation@mail.wwpdb.org
A user guide is available at
<http://wwpdb.org/validation/2016/XrayValidationReportHelp>
with specific help available everywhere you see the ⓘ symbol.

The following versions of software and data (see [references ⓘ](#)) were used in the production of this report:

MolProbity : 4.02b-467
Mogul : 1.7 (RC4), CSD as536be (2015)
Xtriage (Phenix) : 1.9-1692
EDS : rb-20026688
Percentile statistics : 20151230.v01 (using entries in the PDB archive December 30th 2015)
Refmac : 5.8.0135
CCP4 : 6.5.0
Ideal geometry (proteins) : Engh & Huber (2001)
Ideal geometry (DNA, RNA) : Parkinson et al. (1996)
Validation Pipeline (wwPDB-VP) : trunk26865

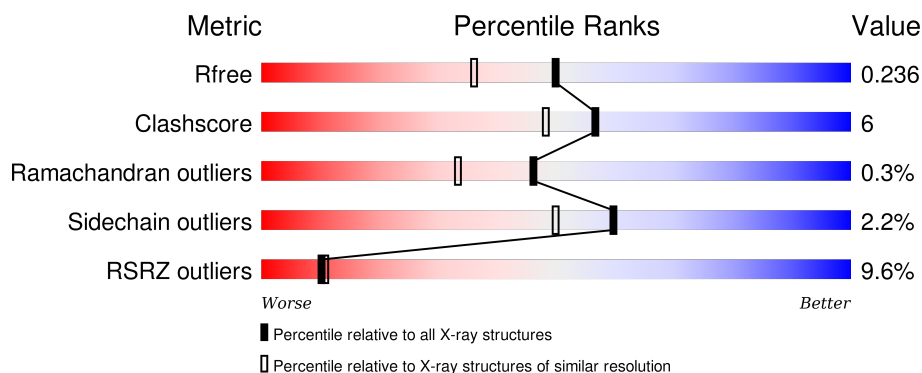
1 Overall quality at a glance

The following experimental techniques were used to determine the structure:

X-RAY DIFFRACTION

The reported resolution of this entry is 1.87 Å.

Percentile scores (ranging between 0-100) for global validation metrics of the entry are shown in the following graphic. The table shows the number of entries on which the scores are based.



Metric	Whole archive (#Entries)	Similar resolution (#Entries, resolution range(Å))
R_{free}	91344	6965 (1.90-1.86)
Clashscore	102246	7778 (1.90-1.86)
Ramachandran outliers	100387	7691 (1.90-1.86)
Sidechain outliers	100360	7692 (1.90-1.86)
RSRZ outliers	91569	6979 (1.90-1.86)

The table below summarises the geometric issues observed across the polymeric chains and their fit to the electron density. The red, orange, yellow and green segments on the lower bar indicate the fraction of residues that contain outliers for ≥ 3 , 2, 1 and 0 types of geometric quality criteria. A grey segment represents the fraction of residues that are not modelled. The numeric value for each fraction is indicated below the corresponding segment, with a dot representing fractions $\leq 5\%$. The upper red bar (where present) indicates the fraction of residues that have poor fit to the electron density. The numeric value is given above the bar.

Mol	Chain	Length	Quality of chain
1	A	204	<div> <div>4%</div> <div>77%</div> <div>10%</div> <div>12%</div> </div>
1	B	204	<div> <div>11%</div> <div>83%</div> <div>9%</div> <div>7%</div> </div>
1	C	204	<div> <div>13%</div> <div>81%</div> <div>12%</div> <div>6%</div> </div>
1	D	204	<div> <div>7%</div> <div>82%</div> <div>14%</div> <div>•</div> </div>

2 Entry composition

There are 4 unique types of molecules in this entry. The entry contains 6658 atoms, of which 0 are hydrogens and 0 are deuteriums.

In the tables below, the ZeroOcc column contains the number of atoms modelled with zero occupancy, the AltConf column contains the number of residues with at least one atom in alternate conformation and the Trace column contains the number of residues modelled with at most 2 atoms.

- Molecule 1 is a protein called POLYMERASE PA.

Mol	Chain	Residues	Atoms					ZeroOcc	AltConf	Trace
1	A	180	Total	C	N	O	S	0	2	0
			1517	967	260	278	12			
1	B	190	Total	C	N	O	S	0	0	0
			1586	1008	271	296	11			
1	C	191	Total	C	N	O	S	0	0	0
			1592	1012	272	296	12			
1	D	198	Total	C	N	O	S	0	0	0
			1637	1037	281	308	11			

There are 24 discrepancies between the modelled and reference sequences:

Chain	Residue	Modelled	Actual	Comment	Reference
A	-5	MET	-	EXPRESSION TAG	UNP C3W5S0
A	-4	GLY	-	EXPRESSION TAG	UNP C3W5S0
A	-3	SER	-	EXPRESSION TAG	UNP C3W5S0
A	-2	GLY	-	EXPRESSION TAG	UNP C3W5S0
A	-1	MET	-	EXPRESSION TAG	UNP C3W5S0
A	0	ALA	-	EXPRESSION TAG	UNP C3W5S0
B	-5	MET	-	EXPRESSION TAG	UNP C3W5S0
B	-4	GLY	-	EXPRESSION TAG	UNP C3W5S0
B	-3	SER	-	EXPRESSION TAG	UNP C3W5S0
B	-2	GLY	-	EXPRESSION TAG	UNP C3W5S0
B	-1	MET	-	EXPRESSION TAG	UNP C3W5S0
B	0	ALA	-	EXPRESSION TAG	UNP C3W5S0
C	-5	MET	-	EXPRESSION TAG	UNP C3W5S0
C	-4	GLY	-	EXPRESSION TAG	UNP C3W5S0
C	-3	SER	-	EXPRESSION TAG	UNP C3W5S0
C	-2	GLY	-	EXPRESSION TAG	UNP C3W5S0
C	-1	MET	-	EXPRESSION TAG	UNP C3W5S0
C	0	ALA	-	EXPRESSION TAG	UNP C3W5S0
D	-5	MET	-	EXPRESSION TAG	UNP C3W5S0
D	-4	GLY	-	EXPRESSION TAG	UNP C3W5S0
D	-3	SER	-	EXPRESSION TAG	UNP C3W5S0

Continued on next page...

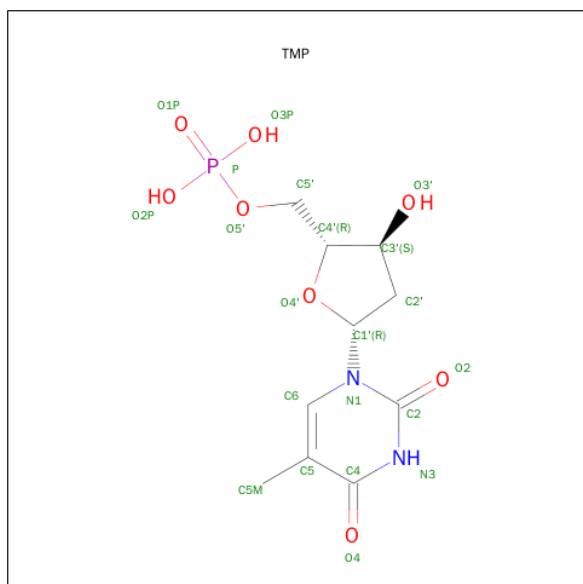
Continued from previous page...

Chain	Residue	Modelled	Actual	Comment	Reference
D	-2	GLY	-	EXPRESSION TAG	UNP C3W5S0
D	-1	MET	-	EXPRESSION TAG	UNP C3W5S0
D	0	ALA	-	EXPRESSION TAG	UNP C3W5S0

- Molecule 2 is MANGANESE (II) ION (three-letter code: MN) (formula: Mn).

Mol	Chain	Residues	Atoms		ZeroOcc	AltConf
2	B	2	Total	Mn	0	0
			2	2		
2	A	2	Total	Mn	0	0
			2	2		
2	D	2	Total	Mn	0	0
			2	2		
2	C	2	Total	Mn	0	0
			2	2		

- Molecule 3 is THYMIDINE-5'-PHOSPHATE (three-letter code: TMP) (formula: C₁₀H₁₅N₂O₈P).



Mol	Chain	Residues	Atoms					ZeroOcc	AltConf
3	A	1	Total	C	N	O	P	0	0
			21	10	2	8	1		
3	B	1	Total	C	N	O	P	0	0
			21	10	2	8	1		
3	C	1	Total	C	N	O	P	0	0
			21	10	2	8	1		
3	D	1	Total	C	N	O	P	0	0
			21	10	2	8	1		

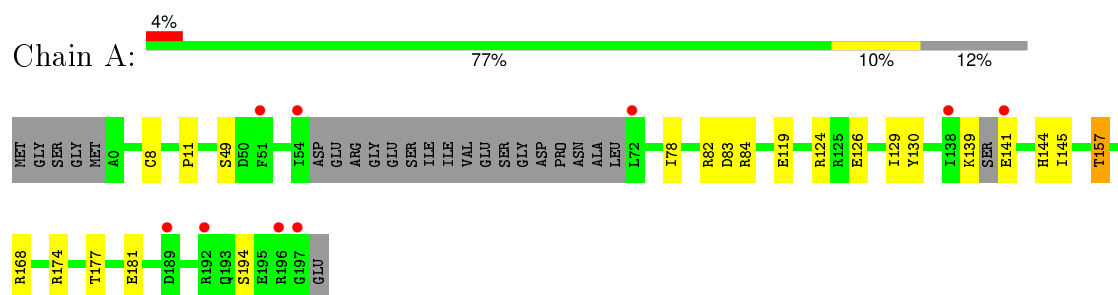
- Molecule 4 is water.

Mol	Chain	Residues	Atoms		ZeroOcc	AltConf
4	A	85	Total 85	O 85	0	0
4	B	40	Total 40	O 40	0	0
4	C	43	Total 43	O 43	0	0
4	D	66	Total 66	O 66	0	0

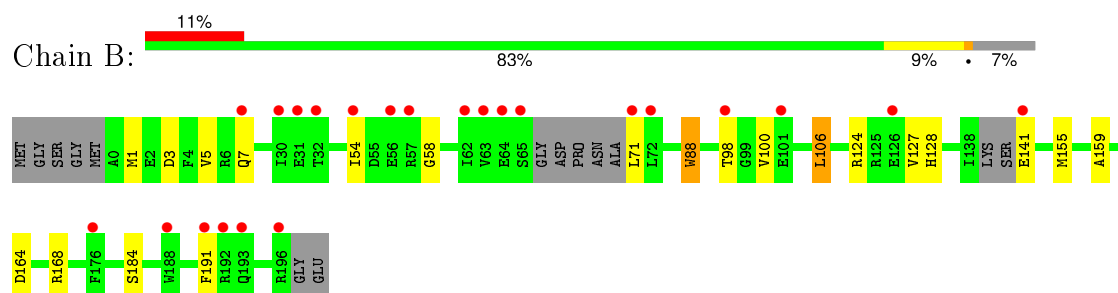
3 Residue-property plots [i](#)

These plots are drawn for all protein, RNA and DNA chains in the entry. The first graphic for a chain summarises the proportions of errors displayed in the second graphic. The second graphic shows the sequence view annotated by issues in geometry and electron density. Residues are color-coded according to the number of geometric quality criteria for which they contain at least one outlier: green = 0, yellow = 1, orange = 2 and red = 3 or more. A red dot above a residue indicates a poor fit to the electron density ($\text{RSRZ} > 2$). Stretches of 2 or more consecutive residues without any outlier are shown as a green connector. Residues present in the sample, but not in the model, are shown in grey.

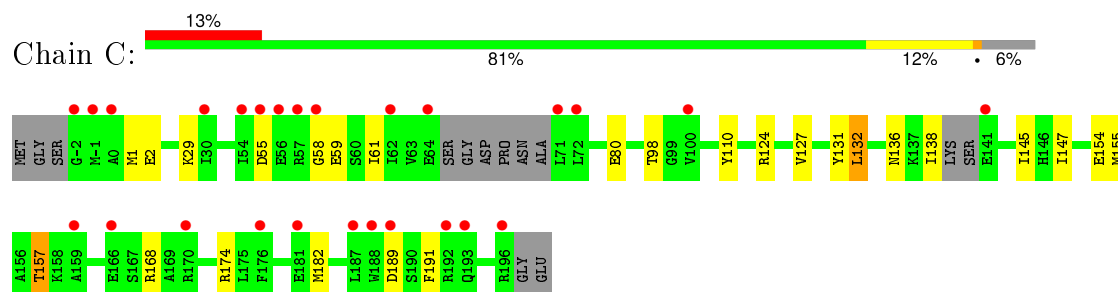
• Molecule 1: POLYMERASE PA



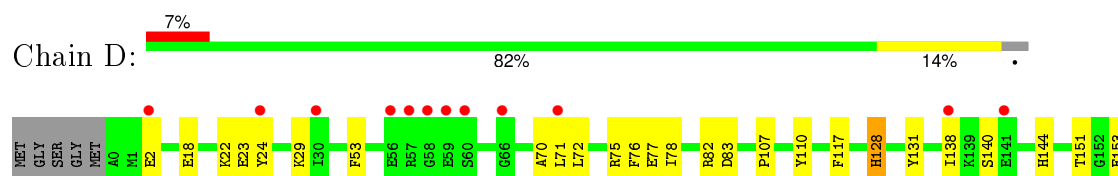
• Molecule 1: POLYMERASE PA



• Molecule 1: POLYMERASE PA



• Molecule 1: POLYMERASE PA





4 Data and refinement statistics

Property	Value	Source
Space group	P 21 21 21	Depositor
Cell constants a, b, c, α , β , γ	54.89Å 121.24Å 129.02Å 90.00° 90.00° 90.00°	Depositor
Resolution (Å)	41.80 – 1.87 41.80 – 1.87	Depositor EDS
% Data completeness (in resolution range)	99.7 (41.80-1.87) 99.8 (41.80-1.87)	Depositor EDS
R_{merge}	0.06	Depositor
R_{sym}	(Not available)	Depositor
$\langle I/\sigma(I) \rangle$ ¹	2.39 (at 1.87Å)	Xtriage
Refinement program	REFMAC 5.6.0116	Depositor
R, R_{free}	0.198 , 0.235 0.200 , 0.236	Depositor DCC
R_{free} test set	3655 reflections (5.36%)	DCC
Wilson B-factor (Å ²)	34.2	Xtriage
Anisotropy	0.317	Xtriage
Bulk solvent k_{sol} (e/Å ³), B_{sol} (Å ²)	0.35 , 43.0	EDS
Estimated twinning fraction	No twinning to report.	Xtriage
L-test for twinning ²	$\langle L \rangle = 0.48$, $\langle L^2 \rangle = 0.31$	Xtriage
Outliers	0 of 71829 reflections	Xtriage
F_o, F_c correlation	0.96	EDS
Total number of atoms	6658	wwPDB-VP
Average B, all atoms (Å ²)	48.0	wwPDB-VP

Xtriage's analysis on translational NCS is as follows: *The largest off-origin peak in the Patterson function is 14.01% of the height of the origin peak. No significant pseudotranslation is detected.*

¹Intensities estimated from amplitudes.

²Theoretical values of $\langle |L| \rangle$, $\langle L^2 \rangle$ for acentric reflections are 0.5, 0.375 respectively for untwinned datasets, and 0.333, 0.2 for perfectly twinned datasets.

5 Model quality ⓘ

5.1 Standard geometry ⓘ

Bond lengths and bond angles in the following residue types are not validated in this section: TMP, MN

The Z score for a bond length (or angle) is the number of standard deviations the observed value is removed from the expected value. A bond length (or angle) with $|Z| > 5$ is considered an outlier worth inspection. RMSZ is the root-mean-square of all Z scores of the bond lengths (or angles).

Mol	Chain	Bond lengths		Bond angles	
		RMSZ	$\# Z > 5$	RMSZ	$\# Z > 5$
1	A	0.78	1/1551 (0.1%)	0.89	7/2078 (0.3%)
1	B	0.62	1/1617 (0.1%)	0.69	0/2169
1	C	0.63	1/1623 (0.1%)	0.73	0/2176
1	D	0.76	0/1671	0.90	5/2245 (0.2%)
All	All	0.70	3/6462 (0.0%)	0.81	12/8668 (0.1%)

All (3) bond length outliers are listed below:

Mol	Chain	Res	Type	Atoms	Z	Observed(Å)	Ideal(Å)
1	C	80	GLU	CD-OE2	5.42	1.31	1.25
1	B	88	TRP	CD2-CE2	5.14	1.47	1.41
1	A	119	GLU	CD-OE2	5.12	1.31	1.25

All (12) bond angle outliers are listed below:

Mol	Chain	Res	Type	Atoms	Z	Observed(°)	Ideal(°)
1	D	82	ARG	NE-CZ-NH2	-12.67	113.96	120.30
1	D	82	ARG	NE-CZ-NH1	10.20	125.40	120.30
1	A	82	ARG	NE-CZ-NH1	8.53	124.56	120.30
1	A	83	ASP	CB-CG-OD1	7.64	125.18	118.30
1	A	82	ARG	NE-CZ-NH2	-6.82	116.89	120.30
1	A	84	ARG	NE-CZ-NH1	6.50	123.55	120.30
1	A	84	ARG	NE-CZ-NH2	-6.23	117.19	120.30
1	A	83	ASP	CB-CG-OD2	-5.95	112.95	118.30
1	D	75	ARG	NE-CZ-NH1	-5.71	117.44	120.30
1	A	168	ARG	NE-CZ-NH2	-5.69	117.45	120.30
1	D	83	ASP	CB-CG-OD1	5.43	123.19	118.30
1	D	24	TYR	CA-CB-CG	5.21	123.30	113.40

There are no chirality outliers.

There are no planarity outliers.

5.2 Too-close contacts

In the following table, the Non-H and H(model) columns list the number of non-hydrogen atoms and hydrogen atoms in the chain respectively. The H(added) column lists the number of hydrogen atoms added and optimized by MolProbity. The Clashes column lists the number of clashes within the asymmetric unit, whereas Symm-Clashes lists symmetry related clashes.

Mol	Chain	Non-H	H(model)	H(added)	Clashes	Symm-Clashes
1	A	1517	0	1496	20	0
1	B	1586	0	1557	19	0
1	C	1592	0	1564	24	0
1	D	1637	0	1605	26	0
2	A	2	0	0	0	0
2	B	2	0	0	0	0
2	C	2	0	0	0	0
2	D	2	0	0	0	0
3	A	21	0	13	0	0
3	B	21	0	13	0	0
3	C	21	0	13	0	0
3	D	21	0	13	0	0
4	A	85	0	0	3	0
4	B	40	0	0	0	0
4	C	43	0	0	1	0
4	D	66	0	0	1	0
All	All	6658	0	6274	78	0

The all-atom clashscore is defined as the number of clashes found per 1000 atoms (including hydrogen atoms). The all-atom clashscore for this structure is 6.

All (78) close contacts within the same asymmetric unit are listed below, sorted by their clash magnitude.

Atom-1	Atom-2	Interatomic distance (Å)	Clash overlap (Å)
1:B:127:VAL:HG12	1:B:155:MET:CE	1.69	1.22
1:B:127:VAL:HG12	1:B:155:MET:HE3	1.19	1.11
1:D:128:HIS:HA	1:D:155:MET:HE1	1.19	1.11
1:D:128:HIS:HA	1:D:155:MET:CE	1.89	1.02
1:B:127:VAL:CG1	1:B:155:MET:HE3	1.93	0.99
1:C:127:VAL:HG11	1:C:155:MET:HB3	1.50	0.93
1:C:127:VAL:CG1	1:C:155:MET:HB3	1.99	0.92
1:B:128:HIS:HA	1:B:155:MET:HE1	1.57	0.87

Continued on next page...

Continued from previous page...

Atom-1	Atom-2	Interatomic distance (Å)	Clash overlap (Å)
1:A:181:GLU:CG	1:D:71:LEU:HD13	2.05	0.86
1:A:181:GLU:HG3	1:D:71:LEU:HD13	1.58	0.86
1:A:145:ILE:H	1:A:157:THR:HG23	1.41	0.84
1:A:177:THR:HG22	1:D:71:LEU:HD11	1.61	0.82
1:A:78:ILE:HG22	4:A:2041:HOH:O	1.79	0.81
1:B:127:VAL:CG1	1:B:155:MET:CE	2.54	0.80
1:A:145:ILE:H	1:A:157:THR:CG2	1.94	0.79
1:A:139:LYS:O	1:A:141:GLU:N	2.19	0.76
1:B:127:VAL:HG11	1:B:155:MET:HB3	1.69	0.74
1:B:88:TRP:CE2	1:B:106:LEU:HD13	2.23	0.73
1:B:127:VAL:HG12	1:B:155:MET:HE2	1.70	0.71
1:C:145:ILE:H	1:C:157:THR:HG23	1.54	0.71
1:D:128:HIS:CA	1:D:155:MET:HE1	2.11	0.70
1:D:77:GLU:OE2	4:D:2025:HOH:O	2.08	0.70
1:C:145:ILE:H	1:C:157:THR:CG2	2.05	0.69
1:C:127:VAL:HG11	1:C:155:MET:CB	2.22	0.69
1:C:55:ASP:HB3	1:C:61:ILE:HD11	1.75	0.67
1:C:132:LEU:HD22	1:C:136:ASN:OD1	1.96	0.65
1:D:151:THR:OG1	1:D:153:GLU:OE1	2.16	0.64
1:C:138:ILE:O	1:C:138:ILE:HG22	2.01	0.61
1:A:177:THR:HG22	1:D:71:LEU:CD1	2.31	0.61
1:A:139:LYS:HA	4:A:2076:HOH:O	2.01	0.59
1:A:181:GLU:HG2	1:D:71:LEU:HD13	1.84	0.59
1:B:128:HIS:CA	1:B:155:MET:HE1	2.32	0.58
1:D:151:THR:HG22	1:D:179:ARG:NH1	2.18	0.57
1:C:1:MET:CE	1:C:182:MET:CE	2.82	0.57
1:C:98:THR:HG21	1:C:110:TYR:OH	2.04	0.57
1:C:174:ARG:NH1	4:C:2042:HOH:O	2.18	0.57
1:B:128:HIS:ND1	1:B:155:MET:CE	2.68	0.56
1:D:157:THR:HG22	1:D:158:LYS:HG3	1.85	0.56
1:A:126:GLU:HB3	1:A:129:ILE:HD12	1.87	0.55
1:C:1:MET:CE	1:C:182:MET:HE3	2.37	0.55
1:C:1:MET:HE1	1:C:182:MET:HE3	1.88	0.55
1:D:128:HIS:CA	1:D:155:MET:CE	2.76	0.54
1:B:128:HIS:ND1	1:B:155:MET:HE1	2.21	0.54
1:C:127:VAL:HG13	1:C:147:ILE:HB	1.89	0.54
1:B:159:ALA:HB2	1:D:70:ALA:HB2	1.90	0.54
1:C:1:MET:HE3	1:C:182:MET:CE	2.39	0.53
1:A:177:THR:CG2	1:D:71:LEU:CD1	2.87	0.52
1:C:131:TYR:OH	1:C:157:THR:HG22	2.11	0.50
1:C:127:VAL:CG1	1:C:155:MET:CB	2.81	0.50

Continued on next page...

Continued from previous page...

Atom-1	Atom-2	Interatomic distance (Å)	Clash overlap (Å)
1:B:3:ASP:O	1:B:7:GLN:HG2	2.11	0.49
1:D:76:PHE:HA	1:D:110:TYR:O	2.12	0.49
1:A:8:CYS:HB3	1:D:71:LEU:HD22	1.96	0.48
1:C:1:MET:HE3	1:C:182:MET:HE1	1.95	0.48
1:C:154:GLU:OE2	1:C:168:ARG:HD2	2.14	0.47
1:C:1:MET:HE1	1:C:182:MET:CE	2.43	0.46
1:A:11:PRO:HB2	1:D:78:ILE:HD12	1.97	0.46
1:B:127:VAL:CG1	1:B:155:MET:HB3	2.41	0.46
1:D:144:HIS:CE1	1:D:157:THR:HB	2.52	0.45
1:C:2:GLU:OE2	1:C:29:LYS:NZ	2.41	0.45
1:B:98:THR:OG1	1:B:100:VAL:HG12	2.17	0.45
1:A:78:ILE:O	1:A:78:ILE:HG23	2.17	0.45
1:A:181:GLU:HG2	1:D:71:LEU:CD1	2.46	0.44
1:B:54:ILE:HG12	1:B:58:GLY:HA2	1.99	0.44
1:A:174:ARG:HH12	1:D:71:LEU:HD21	1.82	0.44
1:A:145:ILE:N	1:A:157:THR:HG23	2.22	0.44
1:C:127:VAL:HG12	1:C:155:MET:HB3	1.90	0.43
1:D:107:PRO:HG2	1:D:117:PHE:CD1	2.53	0.43
1:B:1:MET:O	1:B:5:VAL:HG23	2.18	0.43
1:D:18:GLU:O	1:D:22:LYS:HG3	2.18	0.43
1:D:131:TYR:HB2	1:D:155:MET:HE3	2.02	0.42
1:D:138:ILE:HG22	1:D:140:SER:O	2.20	0.42
1:C:182:MET:HE2	1:C:191:PHE:CB	2.49	0.42
1:B:124:ARG:HD3	1:B:191:PHE:CE2	2.55	0.41
1:B:164:ASP:O	1:B:168:ARG:HG3	2.20	0.41
1:D:53:PHE:CD2	1:D:72:LEU:HB2	2.56	0.41
1:A:194:SER:HB3	4:A:2030:HOH:O	2.21	0.41
1:A:144:HIS:CE1	1:A:157:THR:OG1	2.74	0.41
1:C:124:ARG:HD3	1:C:191:PHE:CE2	2.56	0.40

There are no symmetry-related clashes.

5.3 Torsion angles ⓘ

5.3.1 Protein backbone ⓘ

In the following table, the Percentiles column shows the percent Ramachandran outliers of the chain as a percentile score with respect to all X-ray entries followed by that with respect to entries of similar resolution.

The Analysed column shows the number of residues for which the backbone conformation was analysed, and the total number of residues.

Mol	Chain	Analysed	Favoured	Allowed	Outliers	Percentiles	
1	A	176/204 (86%)	173 (98%)	3 (2%)	0	100	100
1	B	184/204 (90%)	179 (97%)	5 (3%)	0	100	100
1	C	185/204 (91%)	178 (96%)	5 (3%)	2 (1%)	17	6
1	D	196/204 (96%)	191 (97%)	5 (3%)	0	100	100
All	All	741/816 (91%)	721 (97%)	18 (2%)	2 (0%)	46	33

All (2) Ramachandran outliers are listed below:

Mol	Chain	Res	Type
1	C	59	GLU
1	C	58	GLY

5.3.2 Protein sidechains ⓘ

In the following table, the Percentiles column shows the percent sidechain outliers of the chain as a percentile score with respect to all X-ray entries followed by that with respect to entries of similar resolution.

The Analysed column shows the number of residues for which the sidechain conformation was analysed, and the total number of residues.

Mol	Chain	Analysed	Rotameric	Outliers	Percentiles	
1	A	165/182 (91%)	160 (97%)	5 (3%)	48	36
1	B	173/182 (95%)	169 (98%)	4 (2%)	58	48
1	C	173/182 (95%)	170 (98%)	3 (2%)	68	61
1	D	178/182 (98%)	174 (98%)	4 (2%)	60	50
All	All	689/728 (95%)	673 (98%)	16 (2%)	60	48

All (16) residues with a non-rotameric sidechain are listed below:

Mol	Chain	Res	Type
1	A	49[A]	SER
1	A	49[B]	SER
1	A	124	ARG
1	A	130	TYR
1	A	157	THR
1	B	71	LEU
1	B	106	LEU
1	B	141	GLU
1	B	184	SER

Continued on next page...

Continued from previous page...

Mol	Chain	Res	Type
1	C	132	LEU
1	C	157	THR
1	C	189	ASP
1	D	2	GLU
1	D	23	GLU
1	D	29	LYS
1	D	128	HIS

Some sidechains can be flipped to improve hydrogen bonding and reduce clashes. All (3) such sidechains are listed below:

Mol	Chain	Res	Type
1	B	92	ASN
1	C	96	ASN
1	D	74	HIS

5.3.3 RNA [i](#)

There are no RNA molecules in this entry.

5.4 Non-standard residues in protein, DNA, RNA chains [i](#)

There are no non-standard protein/DNA/RNA residues in this entry.

5.5 Carbohydrates [i](#)

There are no carbohydrates in this entry.

5.6 Ligand geometry [i](#)

Of 12 ligands modelled in this entry, 8 are monoatomic - leaving 4 for Mogul analysis.

In the following table, the Counts columns list the number of bonds (or angles) for which Mogul statistics could be retrieved, the number of bonds (or angles) that are observed in the model and the number of bonds (or angles) that are defined in the chemical component dictionary. The Link column lists molecule types, if any, to which the group is linked. The Z score for a bond length (or angle) is the number of standard deviations the observed value is removed from the expected value. A bond length (or angle) with $|Z| > 2$ is considered an outlier worth inspection. RMSZ is the root-mean-square of all Z scores of the bond lengths (or angles).

Mol	Type	Chain	Res	Link	Bond lengths			Bond angles		
					Counts	RMSZ	# Z > 2	Counts	RMSZ	# Z > 2
3	TMP	A	1200	2	17,22,22	1.12	2 (11%)	22,33,33	2.35	5 (22%)
3	TMP	B	1199	2	17,22,22	0.53	0	22,33,33	2.34	3 (13%)
3	TMP	C	1199	2	17,22,22	0.73	0	22,33,33	2.23	5 (22%)
3	TMP	D	1200	2	17,22,22	0.98	2 (11%)	22,33,33	1.88	3 (13%)

In the following table, the Chirals column lists the number of chiral outliers, the number of chiral centers analysed, the number of these observed in the model and the number defined in the chemical component dictionary. Similar counts are reported in the Torsion and Rings columns. '-' means no outliers of that kind were identified.

Mol	Type	Chain	Res	Link	Chirals	Torsions	Rings
3	TMP	A	1200	2	-	0/6/22/22	0/2/2/2
3	TMP	B	1199	2	-	0/6/22/22	0/2/2/2
3	TMP	C	1199	2	-	0/6/22/22	0/2/2/2
3	TMP	D	1200	2	-	0/6/22/22	0/2/2/2

All (4) bond length outliers are listed below:

Mol	Chain	Res	Type	Atoms	Z	Observed(Å)	Ideal(Å)
3	A	1200	TMP	P-O3P	-2.06	1.47	1.54
3	D	1200	TMP	C4-N3	2.14	1.37	1.33
3	D	1200	TMP	C6-N1	2.20	1.38	1.35
3	A	1200	TMP	C6-N1	2.72	1.39	1.35

All (16) bond angle outliers are listed below:

Mol	Chain	Res	Type	Atoms	Z	Observed(°)	Ideal(°)
3	C	1199	TMP	C5-C4-N3	-5.58	118.92	125.14
3	B	1199	TMP	C5-C4-N3	-5.47	119.05	125.14
3	A	1200	TMP	C5-C4-N3	-4.81	119.78	125.14
3	D	1200	TMP	C5-C4-N3	-4.20	120.45	125.14
3	C	1199	TMP	O3P-P-O5'	-2.80	98.51	106.56
3	A	1200	TMP	O3P-P-O5'	-2.47	99.46	106.56
3	A	1200	TMP	O3P-P-O2P	2.01	115.02	107.38
3	C	1199	TMP	O3P-P-O1P	2.27	117.88	110.58
3	B	1199	TMP	O2P-P-O5'	2.44	113.59	106.56
3	A	1200	TMP	O4'-C1'-N1	2.76	112.49	107.72
3	D	1200	TMP	O4'-C1'-N1	3.12	113.13	107.72
3	C	1199	TMP	O4'-C1'-N1	3.57	113.90	107.72
3	D	1200	TMP	C4-N3-C2	5.75	120.21	115.25
3	C	1199	TMP	C4-N3-C2	6.31	120.70	115.25

Continued on next page...

Continued from previous page...

Mol	Chain	Res	Type	Atoms	Z	Observed(°)	Ideal(°)
3	B	1199	TMP	C4-N3-C2	7.84	122.03	115.25
3	A	1200	TMP	C4-N3-C2	8.21	122.34	115.25

There are no chirality outliers.

There are no torsion outliers.

There are no ring outliers.

No monomer is involved in short contacts.

5.7 Other polymers [i](#)

There are no such residues in this entry.

5.8 Polymer linkage issues [i](#)

There are no chain breaks in this entry.

6 Fit of model and data

6.1 Protein, DNA and RNA chains

In the following table, the column labelled ‘#RSRZ> 2’ contains the number (and percentage) of RSRZ outliers, followed by percent RSRZ outliers for the chain as percentile scores relative to all X-ray entries and entries of similar resolution. The OWAB column contains the minimum, median, 95th percentile and maximum values of the occupancy-weighted average B-factor per residue. The column labelled ‘Q< 0.9’ lists the number of (and percentage) of residues with an average occupancy less than 0.9.

Mol	Chain	Analysed	<RSRZ>	#RSRZ>2	OWAB(Å ²)	Q<0.9
1	A	180/204 (88%)	0.42	9 (5%) 32 34	19, 39, 68, 92	0
1	B	190/204 (93%)	0.67	23 (12%) 6 6	28, 53, 79, 118	0
1	C	191/204 (93%)	0.80	26 (13%) 4 4	29, 53, 85, 117	0
1	D	198/204 (97%)	0.55	15 (7%) 17 18	20, 42, 77, 105	0
All	All	759/816 (93%)	0.61	73 (9%) 10 11	19, 47, 80, 118	0

All (73) RSRZ outliers are listed below:

Mol	Chain	Res	Type	RSRZ
1	C	100	VAL	6.0
1	B	63	VAL	5.6
1	B	65	SER	5.5
1	D	57	ARG	5.4
1	C	-1	MET	5.3
1	C	-2	GLY	4.9
1	C	57	ARG	4.5
1	C	64	GLU	4.3
1	C	56	GLU	4.0
1	A	141	GLU	4.0
1	C	55	ASP	3.9
1	A	51	PHE	3.9
1	C	72	LEU	3.9
1	A	54	ILE	3.6
1	B	72	LEU	3.4
1	C	196	ARG	3.4
1	C	58	GLY	3.3
1	C	170	ARG	3.2
1	A	196	ARG	3.2
1	C	30	ILE	3.2
1	D	56	GLU	3.2

Continued on next page...

Continued from previous page...

Mol	Chain	Res	Type	RSRZ
1	C	0	ALA	3.1
1	D	196	ARG	3.1
1	D	30	ILE	3.1
1	D	58	GLY	3.1
1	C	188	TRP	3.1
1	B	71	LEU	3.1
1	D	71	LEU	3.1
1	B	56	GLU	3.0
1	C	54	ILE	2.9
1	D	60	SER	2.9
1	B	54	ILE	2.9
1	C	187	LEU	2.8
1	D	138	ILE	2.8
1	A	197	GLY	2.8
1	D	193	GLN	2.8
1	C	189	ASP	2.8
1	D	59	GLU	2.8
1	B	30	ILE	2.7
1	B	57	ARG	2.7
1	B	196	ARG	2.7
1	C	71	LEU	2.6
1	B	101	GLU	2.6
1	B	141	GLU	2.6
1	B	176	PHE	2.5
1	B	188	TRP	2.5
1	B	126	GLU	2.4
1	B	64	GLU	2.4
1	B	32	THR	2.4
1	B	7	GLN	2.3
1	C	166	GLU	2.3
1	D	66	GLY	2.3
1	C	181	GLU	2.3
1	C	62	ILE	2.3
1	B	98	THR	2.3
1	A	72	LEU	2.3
1	B	193	GLN	2.2
1	B	192	ARG	2.2
1	C	159	ALA	2.1
1	B	191	PHE	2.1
1	B	31	GLU	2.1
1	D	2	GLU	2.1
1	B	62	ILE	2.1

Continued on next page...

Continued from previous page...

Mol	Chain	Res	Type	RSRZ
1	C	192	ARG	2.1
1	D	24	TYR	2.1
1	C	176	PHE	2.1
1	D	141	GLU	2.1
1	D	186	SER	2.0
1	C	193	GLN	2.0
1	A	189	ASP	2.0
1	A	192	ARG	2.0
1	C	141	GLU	2.0
1	A	138	ILE	2.0

6.2 Non-standard residues in protein, DNA, RNA chains [i](#)

There are no non-standard protein/DNA/RNA residues in this entry.

6.3 Carbohydrates [i](#)

There are no carbohydrates in this entry.

6.4 Ligands [i](#)

In the following table, the Atoms column lists the number of modelled atoms in the group and the number defined in the chemical component dictionary. LLDF column lists the quality of electron density of the group with respect to its neighbouring residues in protein, DNA or RNA chains. The B-factors column lists the minimum, median, 95th percentile and maximum values of B factors of atoms in the group. The column labelled 'Q< 0.9' lists the number of atoms with occupancy less than 0.9.

Mol	Type	Chain	Res	Atoms	RSCC	RSR	LLDF	B-factors(Å ²)	Q<0.9
3	TMP	B	1199	21/21	0.96	0.11	-0.20	41,45,53,57	0
3	TMP	A	1200	21/21	0.98	0.12	-0.83	23,33,44,48	0
3	TMP	C	1199	21/21	0.96	0.10	-0.94	33,41,45,47	0
2	MN	C	1197	1/1	0.96	0.08	-1.50	31,31,31,31	0
3	TMP	D	1200	21/21	0.97	0.09	-1.82	22,32,39,45	0
2	MN	C	1198	1/1	0.99	0.07	-1.92	30,30,30,30	0
2	MN	A	1198	1/1	1.00	0.09	-2.33	23,23,23,23	0
2	MN	A	1199	1/1	1.00	0.07	-3.01	21,21,21,21	0
2	MN	D	1199	1/1	1.00	0.07	-3.14	21,21,21,21	0
2	MN	D	1198	1/1	1.00	0.08	-3.43	23,23,23,23	0
2	MN	B	1197	1/1	0.98	0.03	-3.70	36,36,36,36	0
2	MN	B	1198	1/1	0.99	0.03	-6.64	35,35,35,35	0

6.5 Other polymers [i](#)

There are no such residues in this entry.