



Full wwPDB X-ray Structure Validation Report ⓘ

Feb 19, 2016 – 09:39 PM GMT

PDB ID : 5AW4
Title : Kinetics by X-ray crystallography: Rb⁺-substitution of bound K⁺ in the E2.MgF42-.2K⁺ crystal after 1.5 min
Authors : Ogawa, H.; Cornelius, F.; Hirata, A.; Toyoshima, C.
Deposited on : 2015-07-01
Resolution : 2.80 Å(reported)

This is a Full wwPDB X-ray Structure Validation Report for a publicly released PDB entry.
We welcome your comments at validation@mail.wwpdb.org
A user guide is available at
<http://wwpdb.org/validation/2016/XrayValidationReportHelp>
with specific help available everywhere you see the ⓘ symbol.

The following versions of software and data (see [references ⓘ](#)) were used in the production of this report:

MolProbity : 4.02b-467
Mogul : 1.7.1 (RC1), CSD as537be (2016)
Xtriage (Phenix) : 1.9-1692
EDS : rb-20026982
Percentile statistics : 20151230.v01 (using entries in the PDB archive December 30th 2015)
Refmac : 5.8.0135
CCP4 : 6.5.0
Ideal geometry (proteins) : Engh & Huber (2001)
Ideal geometry (DNA, RNA) : Parkinson et al. (1996)
Validation Pipeline (wwPDB-VP) : rb-20026982

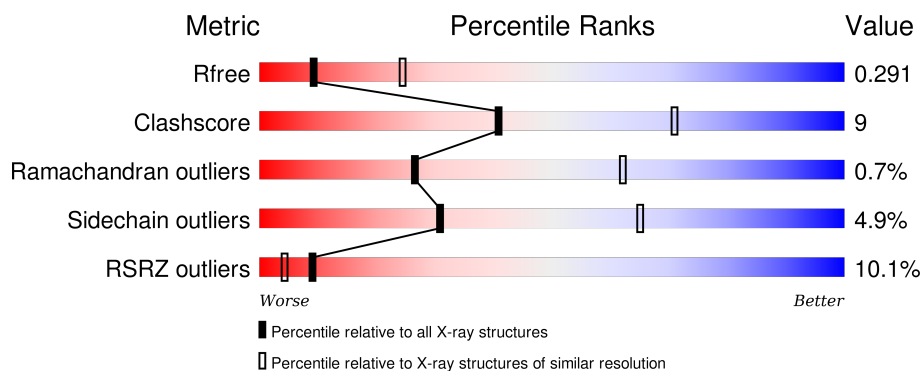
1 Overall quality at a glance

The following experimental techniques were used to determine the structure:

X-RAY DIFFRACTION

The reported resolution of this entry is 2.80 Å.

Percentile scores (ranging between 0-100) for global validation metrics of the entry are shown in the following graphic. The table shows the number of entries on which the scores are based.



Metric	Whole archive (#Entries)	Similar resolution (#Entries, resolution range(Å))
R_{free}	91344	2393 (2.80-2.80)
Clashscore	102246	2827 (2.80-2.80)
Ramachandran outliers	100387	2782 (2.80-2.80)
Sidechain outliers	100360	2784 (2.80-2.80)
RSRZ outliers	91569	2404 (2.80-2.80)

The table below summarises the geometric issues observed across the polymeric chains and their fit to the electron density. The red, orange, yellow and green segments on the lower bar indicate the fraction of residues that contain outliers for ≥ 3 , 2, 1 and 0 types of geometric quality criteria. A grey segment represents the fraction of residues that are not modelled. The numeric value for each fraction is indicated below the corresponding segment, with a dot representing fractions $\leq 5\%$. The upper red bar (where present) indicates the fraction of residues that have poor fit to the electron density. The numeric value is given above the bar.

Mol	Chain	Length	Quality of chain
1	A	1028	<div> <div>7%</div> <div>74%</div> <div>21%</div> <div>• •</div> </div>
2	B	305	<div> <div>18%</div> <div>67%</div> <div>19%</div> <div>• 12%</div> </div>
3	G	74	<div> <div>%</div> <div>36%</div> <div>16%</div> <div>47%</div> </div>

The following table lists non-polymeric compounds, carbohydrate monomers and non-standard residues in protein, DNA, RNA chains that are outliers for geometric or electron-density-fit criteria:

Mol	Type	Chain	Res	Chirality	Geometry	Clashes	Electron density
4	MF4	A	2001	-	-	-	X
5	MG	A	2002	-	-	-	X

2 Entry composition [i](#)

There are 10 unique types of molecules in this entry. The entry contains 10237 atoms, of which 0 are hydrogens and 0 are deuteriums.

In the tables below, the ZeroOcc column contains the number of atoms modelled with zero occupancy, the AltConf column contains the number of residues with at least one atom in alternate conformation and the Trace column contains the number of residues modelled with at most 2 atoms.

- Molecule 1 is a protein called Na, K-ATPase alpha subunit.

Mol	Chain	Residues	Atoms					ZeroOcc	AltConf	Trace
1	A	992	Total	C	N	O	S	0	0	0
			7675	4886	1290	1453	46			

- Molecule 2 is a protein called Na⁺,K⁺-ATPase beta subunit.

Mol	Chain	Residues	Atoms					ZeroOcc	AltConf	Trace
2	B	268	Total	C	N	O	S	0	0	0
			2174	1409	358	396	11			

- Molecule 3 is a protein called Phospholemman-like protein.

Mol	Chain	Residues	Atoms					ZeroOcc	AltConf	Trace
3	G	39	Total	C	N	O	S	0	0	0
			305	200	50	54	1			

- Molecule 4 is TETRAFLUOROMAGNESATE(2-) (three-letter code: MF4) (formula: F₄Mg).



Mol	Chain	Residues	Atoms			ZeroOcc	AltConf
4	A	1	Total	F	Mg	0	0
			5	4	1		

- Molecule 5 is MAGNESIUM ION (three-letter code: MG) (formula: Mg).

Mol	Chain	Residues	Atoms			ZeroOcc	AltConf
5	A	1	Total	Mg		0	0
			1	1			

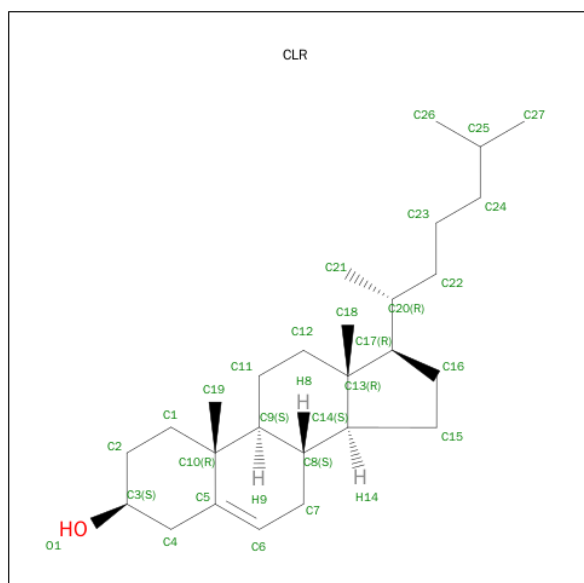
- Molecule 6 is POTASSIUM ION (three-letter code: K) (formula: K).

Mol	Chain	Residues	Atoms			ZeroOcc	AltConf
6	A	3	Total	K		0	3
			3	3			

- Molecule 7 is RUBIDIUM ION (three-letter code: RB) (formula: Rb).

Mol	Chain	Residues	Atoms			ZeroOcc	AltConf
7	A	3	Total	Rb		0	3
			3	3			

- Molecule 8 is CHOLESTEROL (three-letter code: CLR) (formula: C₂₇H₄₆O).



Mol	Chain	Residues	Atoms			ZeroOcc	AltConf
8	B	1	Total	C	O	0	0
			28	27	1		

- Molecule 9 is N-ACETYL-D-GLUCOSAMINE (three-letter code: NAG) (formula: $C_8H_{15}NO_6$).



Mol	Chain	Residues	Atoms				ZeroOcc	AltConf
9	B	1	Total	C	N	O	0	0
			14	8	1	5		
9	B	1	Total	C	N	O	0	0
			14	8	1	5		
9	B	1	Total	C	N	O	0	0
			14	8	1	5		

- Molecule 10 is water.

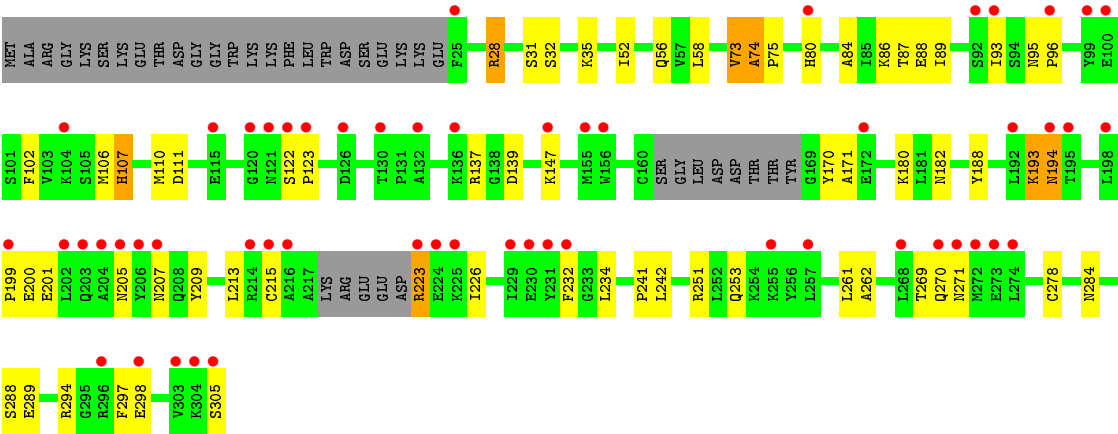
Mol	Chain	Residues	Atoms		ZeroOcc	AltConf
10	A	1	Total	O	0	0
			1	1		

These plots are drawn for all protein, RNA and DNA chains in the entry. The first graphic for a chain summarises the proportions of errors displayed in the second graphic. The second graphic shows the sequence view annotated by issues in geometry and electron density. Residues are color-coded according to the number of geometric quality criteria for which they contain at least one outlier: green = 0, yellow = 1, orange = 2 and red = 3 or more. A red dot above a residue indicates a poor fit to the electron density ($\text{RSRZ} > 2$). Stretches of 2 or more consecutive residues without any outlier are shown as a green connector. Residues present in the sample, but not in the model, are shown in grey.

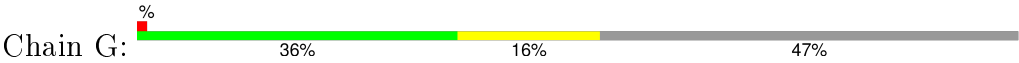
- Chain A: 74% 21% 7%

The figure displays a sequence logo for Chain A, illustrating the conservation of amino acids across 2000 positions. The logo is color-coded by conservation level: green for high conservation (74%), orange for medium conservation (21%), and red for low conservation (7%). The y-axis lists amino acids, and the x-axis shows positions from 1 to 1000. A secondary y-axis on the right lists amino acids for positions 1001 to 2000. The logo shows a high degree of conservation in the first 1000 positions, with a significant drop-off in the second 1000 positions.

- Chain B: 



● Molecule 3: Phospholemman-like protein



4 Data and refinement statistics

Property	Value	Source
Space group	C 1 2 1	Depositor
Cell constants a, b, c, α , β , γ	219.82Å 50.59Å 162.53Å 90.00° 104.42° 90.00°	Depositor
Resolution (Å)	14.96 – 2.80 40.69 – 2.70	Depositor EDS
% Data completeness (in resolution range)	68.2 (14.96-2.80) 83.5 (40.69-2.70)	Depositor EDS
R_{merge}	(Not available)	Depositor
R_{sym}	(Not available)	Depositor
$\langle I/\sigma(I) \rangle$ ¹	3.47 (at 2.68Å)	Xtriage
Refinement program	CNS 1.2	Depositor
R, R_{free}	0.286 , 0.275 0.288 , 0.291	Depositor DCC
R_{free} test set	1901 reflections (5.40%)	DCC
Wilson B-factor (Å ²)	58.6	Xtriage
Anisotropy	0.198	Xtriage
Bulk solvent k_{sol} (e/Å ³), B_{sol} (Å ²)	0.29 , 41.6	EDS
Estimated twinning fraction	No twinning to report.	Xtriage
L-test for twinning ²	$\langle L \rangle = 0.47$, $\langle L^2 \rangle = 0.30$	Xtriage
Outliers	0 of 42379 reflections	Xtriage
F_o, F_c correlation	0.90	EDS
Total number of atoms	10237	wwPDB-VP
Average B, all atoms (Å ²)	100.0	wwPDB-VP

Xtriage's analysis on translational NCS is as follows: *The largest off-origin peak in the Patterson function is 4.65% of the height of the origin peak. No significant pseudotranslation is detected.*

¹Intensities estimated from amplitudes.

²Theoretical values of $\langle |L| \rangle$, $\langle L^2 \rangle$ for acentric reflections are 0.5, 0.375 respectively for untwinned datasets, and 0.333, 0.2 for perfectly twinned datasets.

5 Model quality

5.1 Standard geometry

Bond lengths and bond angles in the following residue types are not validated in this section: MG, NAG, K, MF4, RB, CLR

The Z score for a bond length (or angle) is the number of standard deviations the observed value is removed from the expected value. A bond length (or angle) with $|Z| > 5$ is considered an outlier worth inspection. RMSZ is the root-mean-square of all Z scores of the bond lengths (or angles).

Mol	Chain	Bond lengths		Bond angles	
		RMSZ	# Z >5	RMSZ	# Z >5
1	A	0.38	0/7825	0.51	0/10616
2	B	0.36	0/2229	0.49	0/3002
3	G	0.36	0/309	0.46	0/419
All	All	0.38	0/10363	0.51	0/14037

There are no bond length outliers.

There are no bond angle outliers.

There are no chirality outliers.

There are no planarity outliers.

5.2 Too-close contacts

In the following table, the Non-H and H(model) columns list the number of non-hydrogen atoms and hydrogen atoms in the chain respectively. The H(added) column lists the number of hydrogen atoms added and optimized by MolProbity. The Clashes column lists the number of clashes within the asymmetric unit, whereas Symm-Clashes lists symmetry related clashes.

Mol	Chain	Non-H	H(model)	H(added)	Clashes	Symm-Clashes
1	A	7675	0	7699	130	1
2	B	2174	0	2146	49	0
3	G	305	0	318	9	0
4	A	5	0	0	0	0
5	A	1	0	0	0	0
6	A	3	0	0	0	0
7	A	3	0	0	0	0
8	B	28	0	46	0	0
9	B	42	0	38	0	0
10	A	1	0	0	0	0
All	All	10237	0	10247	177	1

The all-atom clashscore is defined as the number of clashes found per 1000 atoms (including hydrogen atoms). The all-atom clashscore for this structure is 9.

All (177) close contacts within the same asymmetric unit are listed below, sorted by their clash magnitude.

Atom-1	Atom-2	Interatomic distance (Å)	Clash overlap (Å)
2:B:74:ALA:HB3	2:B:75:PRO:HD3	1.47	0.94
1:A:478:VAL:HG21	1:A:571:PHE:HB2	1.64	0.79
1:A:497:LYS:HE2	1:A:499:SER:HB2	1.69	0.75
1:A:868:SER:O	1:A:872:ILE:HG12	1.86	0.75
1:A:61:ARG:HB3	1:A:61:ARG:HH11	1.52	0.73
1:A:261:THR:HG22	1:A:264:ARG:NH2	2.02	0.73
1:A:51:LEU:HD13	1:A:204:ARG:HG3	1.69	0.71
2:B:270:GLN:HG2	2:B:271:ASN:HD22	1.58	0.68
1:A:766:ARG:HD2	1:A:832:MET:CE	2.24	0.68
1:A:339:THR:HG23	1:A:820:ILE:HD13	1.77	0.67
1:A:935:ILE:HG23	1:A:944:ILE:HD12	1.77	0.65
2:B:213:LEU:HD11	2:B:278:CYS:HB3	1.78	0.65
1:A:78:ASN:HA	1:A:261:THR:HG23	1.79	0.64
1:A:816:MET:O	1:A:820:ILE:HG12	1.97	0.63
1:A:160:SER:HB3	1:A:741:VAL:HG22	1.80	0.63
2:B:74:ALA:CB	2:B:75:PRO:HD3	2.23	0.63
2:B:28:ARG:HB2	2:B:32:SER:HB3	1.81	0.63
1:A:52:HIS:HA	1:A:57:THR:HG23	1.80	0.63
1:A:673:LEU:HD22	1:A:677:VAL:HG11	1.80	0.63
2:B:193:LYS:HA	2:B:207:ASN:HD21	1.65	0.62
1:A:323:PHE:O	1:A:327:ILE:HG12	2.01	0.61
1:A:64:THR:HG22	1:A:66:ALA:H	1.65	0.61
3:G:29:VAL:O	3:G:33:ILE:HG12	2.00	0.60
1:A:483:ASN:HB2	1:A:486:ASN:HB2	1.82	0.60
1:A:363:ALA:HB1	1:A:730:ILE:HD12	1.83	0.60
2:B:270:GLN:HG2	2:B:271:ASN:ND2	2.16	0.60
2:B:31:SER:O	2:B:35:LYS:HG3	2.01	0.60
1:A:344:LEU:HB3	1:A:361:LEU:HG	1.85	0.59
2:B:84:ALA:HB1	2:B:88:GLU:H	1.67	0.59
1:A:392:TRP:HB3	1:A:588:LEU:HB2	1.84	0.59
1:A:106:ILE:O	1:A:110:LEU:HB2	2.03	0.59
3:G:21:VAL:O	3:G:25:ILE:HG12	2.02	0.59
1:A:212:LYS:HB2	1:A:251:GLU:HG2	1.85	0.59
2:B:106:MET:O	2:B:110:MET:HG2	2.03	0.58
2:B:75:PRO:HG2	2:B:294:ARG:HH21	1.68	0.57
1:A:345:THR:HA	1:A:361:LEU:HD11	1.84	0.57
1:A:491:SER:HB3	1:A:493:HIS:NE2	2.19	0.57

Continued on next page...

Continued from previous page...

Atom-1	Atom-2	Interatomic distance (Å)	Clash overlap (Å)
2:B:74:ALA:HB3	2:B:75:PRO:CD	2.29	0.57
2:B:193:LYS:HA	2:B:207:ASN:ND2	2.20	0.57
1:A:818:PRO:HB3	1:A:934:LEU:HD22	1.87	0.56
1:A:905:GLN:HE21	2:B:182:ASN:HA	1.69	0.56
2:B:52:ILE:O	2:B:56:GLN:HG2	2.05	0.56
2:B:137:ARG:HD2	2:B:147:LYS:HB3	1.88	0.56
1:A:933:ASP:HA	1:A:936:ILE:HG12	1.86	0.56
1:A:172:ILE:HD13	1:A:177:LYS:HB3	1.87	0.56
2:B:93:ILE:H	2:B:305:SER:HB2	1.72	0.55
1:A:190:LEU:HD11	1:A:206:ILE:HD11	1.88	0.55
1:A:905:GLN:NE2	2:B:182:ASN:HA	2.21	0.55
1:A:894:TRP:CH2	2:B:86:LYS:HG2	2.39	0.55
1:A:157:ILE:HD11	1:A:745:ALA:HA	1.88	0.55
1:A:994:TYR:O	1:A:997:ILE:HG22	2.06	0.55
1:A:351:MET:HA	1:A:354:LYS:HG2	1.88	0.55
1:A:261:THR:HG22	1:A:264:ARG:HH21	1.71	0.55
1:A:596:ARG:HB2	1:A:599:VAL:HG23	1.89	0.55
1:A:871:VAL:HG22	2:B:58:LEU:HD13	1.88	0.54
1:A:924:ILE:HD12	1:A:983:LEU:HD12	1.89	0.54
1:A:64:THR:HG22	1:A:66:ALA:N	2.23	0.54
1:A:994:TYR:HA	1:A:997:ILE:HG22	1.89	0.54
1:A:905:GLN:HE22	2:B:180:LYS:HD3	1.73	0.54
1:A:921:SER:HA	1:A:983:LEU:HD11	1.90	0.54
2:B:213:LEU:HD23	2:B:261:LEU:HD13	1.89	0.53
1:A:51:LEU:CD1	1:A:204:ARG:HG3	2.36	0.53
1:A:424:ILE:HG23	1:A:506:VAL:HB	1.90	0.53
1:A:161:PHE:HA	1:A:164:MET:HE3	1.90	0.53
1:A:324:LEU:O	1:A:328:ILE:HG12	2.09	0.53
1:A:161:PHE:HA	1:A:164:MET:CE	2.39	0.52
1:A:212:LYS:HD3	1:A:224:PRO:HB2	1.90	0.52
1:A:766:ARG:HD2	1:A:832:MET:HE2	1.91	0.52
2:B:75:PRO:HG2	2:B:294:ARG:NH2	2.25	0.52
1:A:808:LEU:O	1:A:812:LEU:HB2	2.10	0.52
3:G:32:VAL:O	3:G:36:ILE:HG12	2.09	0.52
1:A:82:PRO:HA	1:A:158:MET:HG2	1.92	0.52
1:A:572:ASP:HB3	1:A:577:ASN:HB2	1.92	0.51
3:G:25:ILE:O	3:G:29:VAL:HG23	2.11	0.51
1:A:788:THR:N	1:A:789:PRO:HD2	2.26	0.51
1:A:417:THR:HA	1:A:522:LEU:HD22	1.93	0.51
2:B:288:SER:HB2	2:B:294:ARG:HH11	1.76	0.50
1:A:953:ILE:HD13	3:G:38:LEU:CD1	2.42	0.50

Continued on next page...

Continued from previous page...

Atom-1	Atom-2	Interatomic distance (Å)	Clash overlap (Å)
1:A:571:PHE:HA	1:A:577:ASN:HD22	1.76	0.50
1:A:359:LYS:HE2	1:A:746:ALA:O	2.12	0.49
2:B:232:PHE:HB2	2:B:262:ALA:HB3	1.93	0.49
1:A:826:GLN:HE22	1:A:950:LYS:HE3	1.78	0.49
1:A:1020:GLU:OE2	2:B:28:ARG:NH2	2.43	0.49
1:A:1005:ARG:NH1	1:A:1006:ARG:HG3	2.28	0.49
2:B:209:TYR:HA	2:B:242:LEU:HD22	1.96	0.48
1:A:502:ARG:CG	1:A:503:TYR:H	2.27	0.48
1:A:894:TRP:CZ3	2:B:86:LYS:HA	2.48	0.48
1:A:442:ILE:O	1:A:445:ARG:HG2	2.14	0.48
1:A:323:PHE:CE1	1:A:793:PHE:HE2	2.32	0.47
1:A:797:ASN:HD22	1:A:887:ARG:HD3	1.79	0.47
1:A:171:VAL:HG12	1:A:191:VAL:HG22	1.97	0.47
1:A:132:LEU:HD21	1:A:804:THR:HG21	1.97	0.47
1:A:906:TRP:CZ2	2:B:73:VAL:HG22	2.50	0.47
3:G:31:CYS:O	3:G:35:ILE:HG12	2.14	0.47
2:B:87:THR:HB	2:B:298:GLU:O	2.14	0.47
1:A:814:THR:HB	1:A:961:GLU:HG3	1.96	0.47
1:A:336:LEU:HD11	1:A:776:ILE:HG12	1.96	0.47
2:B:80:HIS:HB3	2:B:297:PHE:CZ	2.50	0.47
2:B:122:SER:HA	2:B:123:PRO:HA	1.75	0.47
1:A:924:ILE:HD12	1:A:983:LEU:CD1	2.45	0.46
2:B:226:ILE:HG22	2:B:269:THR:HB	1.96	0.46
1:A:127:ASN:HB3	1:A:131:TYR:CD1	2.50	0.46
2:B:215:CYS:HA	2:B:278:CYS:HA	1.96	0.46
1:A:894:TRP:CZ2	2:B:86:LYS:HG2	2.50	0.46
1:A:631:VAL:HG23	1:A:633:ILE:HG12	1.96	0.46
1:A:63:LEU:HD22	1:A:189:ASP:HB3	1.97	0.46
1:A:303:GLY:HA2	1:A:327:ILE:HG21	1.97	0.46
1:A:953:ILE:HD13	3:G:38:LEU:HD12	1.97	0.46
1:A:670:LEU:HD23	1:A:678:LEU:HD21	1.96	0.46
1:A:784:ILE:HD11	1:A:854:TYR:CG	2.51	0.46
1:A:889:ARG:HD2	1:A:895:ILE:CD1	2.45	0.46
1:A:475:PRO:HD2	1:A:494:GLU:HB2	1.98	0.45
1:A:209:HIS:HB3	1:A:253:THR:HG22	1.98	0.45
2:B:84:ALA:HB1	2:B:88:GLU:N	2.31	0.45
1:A:722:SER:OG	1:A:723:PRO:HD3	2.17	0.45
1:A:631:VAL:CG2	1:A:633:ILE:HG12	2.46	0.45
1:A:847:GLU:H	1:A:847:GLU:CD	2.20	0.45
1:A:676:GLU:H	1:A:676:GLU:CD	2.20	0.45
1:A:52:HIS:HE2	1:A:59:LEU:HD12	1.82	0.44

Continued on next page...

Continued from previous page...

Atom-1	Atom-2	Interatomic distance (Å)	Clash overlap (Å)
1:A:915:GLU:O	1:A:918:CYS:HB2	2.17	0.44
1:A:806:THR:HG22	1:A:923:PHE:HB2	1.99	0.44
2:B:194:ASN:N	2:B:194:ASN:HD22	2.15	0.44
2:B:234:LEU:HG	2:B:241:PRO:HG3	1.99	0.44
1:A:354:LYS:HB2	1:A:354:LYS:HZ2	1.81	0.44
2:B:107:HIS:O	2:B:111:ASP:HB2	2.18	0.44
1:A:246:SER:OG	1:A:267:MET:HG3	2.18	0.44
2:B:107:HIS:ND1	2:B:170:TYR:HE1	2.17	0.43
1:A:273:LEU:O	1:A:277:LEU:HG	2.19	0.43
1:A:790:PHE:O	1:A:794:ILE:HG12	2.19	0.43
2:B:147:LYS:HB2	2:B:253:GLN:HG3	1.99	0.43
1:A:110:LEU:HD22	1:A:324:LEU:HD12	1.99	0.43
1:A:87:PRO:HD2	1:A:90:ILE:HD12	1.99	0.43
1:A:511:PRO:HG2	1:A:542:TYR:CE1	2.53	0.43
3:G:4:GLU:CD	3:G:5:GLY:H	2.23	0.43
1:A:64:THR:HA	1:A:174:ASP:OD1	2.19	0.42
1:A:661:LYS:HA	1:A:661:LYS:HE2	2.00	0.42
1:A:797:ASN:HB3	1:A:885:GLY:HA2	2.01	0.42
1:A:300:VAL:O	1:A:304:VAL:HG22	2.19	0.42
1:A:170:LEU:HD21	1:A:177:LYS:HD3	2.00	0.42
1:A:940:ARG:HE	1:A:1023:TYR:HB2	1.84	0.42
2:B:223:ARG:HH11	2:B:223:ARG:HB2	1.84	0.42
2:B:188:TYR:O	2:B:284:ASN:ND2	2.53	0.42
1:A:291:PHE:HA	1:A:294:ILE:HD12	2.01	0.42
2:B:74:ALA:CB	2:B:75:PRO:CD	2.92	0.42
2:B:89:ILE:HG22	2:B:102:PHE:CE1	2.55	0.42
2:B:95:ASN:HA	2:B:96:PRO:HD3	1.86	0.42
1:A:291:PHE:HB3	1:A:845:VAL:HB	2.02	0.42
2:B:137:ARG:HB3	2:B:147:LYS:HD2	2.01	0.42
1:A:784:ILE:N	1:A:785:PRO:HD2	2.35	0.42
2:B:194:ASN:HB3	2:B:205:ASN:OD1	2.20	0.42
1:A:378:THR:HA	1:A:382:THR:OG1	2.20	0.42
1:A:502:ARG:HE	1:A:562:GLU:HG2	1.85	0.41
1:A:367:LEU:HD23	1:A:761:GLY:HA3	2.01	0.41
1:A:48:LEU:HD23	1:A:59:LEU:HD11	2.01	0.41
1:A:110:LEU:CD2	1:A:324:LEU:HD12	2.50	0.41
2:B:271:ASN:HD21	2:B:305:SER:N	2.19	0.41
1:A:785:PRO:HB2	1:A:926:ILE:CD1	2.51	0.41
1:A:920:THR:HG21	1:A:981:TYR:O	2.20	0.41
3:G:17:TYR:O	3:G:21:VAL:HG23	2.21	0.41
1:A:846:ASN:ND2	1:A:848:ARG:HB2	2.35	0.41

Continued on next page...

Continued from previous page...

Atom-1	Atom-2	Interatomic distance (Å)	Clash overlap (Å)
1:A:502:ARG:HG3	1:A:562:GLU:HG2	2.02	0.41
1:A:301:PHE:O	1:A:305:SER:HB2	2.20	0.41
1:A:44:HIS:HB3	1:A:242:ILE:HD11	2.03	0.41
1:A:426:ALA:O	1:A:471:ARG:HD2	2.20	0.41
1:A:342:VAL:HB	1:A:820:ILE:HD12	2.03	0.41
1:A:647:ARG:HH21	1:A:648:LEU:HD11	1.86	0.41
1:A:540:ASN:N	1:A:540:ASN:HD22	2.18	0.41
1:A:458:LYS:O	1:A:462:LEU:HB2	2.21	0.41
1:A:423:ARG:O	1:A:427:LEU:HB2	2.21	0.41
1:A:284:ILE:O	1:A:288:ILE:HG12	2.21	0.41
1:A:702:VAL:HG13	1:A:712:VAL:HG21	2.03	0.41
1:A:354:LYS:HE2	1:A:760:THR:HB	2.02	0.40
1:A:831:ILE:O	1:A:834:ARG:HG2	2.22	0.40
1:A:925:SER:O	1:A:929:VAL:HG22	2.22	0.40
1:A:989:PHE:HA	1:A:992:PHE:CD1	2.57	0.40
1:A:900:ASP:OD2	1:A:904:GLN:HB2	2.21	0.40
1:A:199:ILE:HG22	1:A:201:ALA:O	2.22	0.40

All (1) symmetry-related close contacts are listed below. The label for Atom-2 includes the symmetry operator and encoded unit-cell translations to be applied.

Atom-1	Atom-2	Interatomic distance (Å)	Clash overlap (Å)
1:A:430:ARG:NH2	1:A:648:LEU:O[1_565]	2.04	0.16

5.3 Torsion angles [i](#)

5.3.1 Protein backbone [i](#)

In the following table, the Percentiles column shows the percent Ramachandran outliers of the chain as a percentile score with respect to all X-ray entries followed by that with respect to entries of similar resolution.

The Analysed column shows the number of residues for which the backbone conformation was analysed, and the total number of residues.

Mol	Chain	Analysed	Favoured	Allowed	Outliers	Percentiles
1	A	990/1028 (96%)	942 (95%)	43 (4%)	5 (0%)	34 69
2	B	262/305 (86%)	223 (85%)	35 (13%)	4 (2%)	13 40
3	G	37/74 (50%)	33 (89%)	4 (11%)	0	100 100

Continued on next page...

Continued from previous page...

Mol	Chain	Analysed	Favoured	Allowed	Outliers	Percentiles
All	All	1289/1407 (92%)	1198 (93%)	82 (6%)	9 (1%)	26 62

All (9) Ramachandran outliers are listed below:

Mol	Chain	Res	Type
1	A	121	THR
1	A	128	ASP
1	A	576	PRO
2	B	74	ALA
2	B	171	ALA
2	B	201	GLU
1	A	123	ASP
1	A	1014	GLY
2	B	199	PRO

5.3.2 Protein sidechains ⓘ

In the following table, the Percentiles column shows the percent sidechain outliers of the chain as a percentile score with respect to all X-ray entries followed by that with respect to entries of similar resolution.

The Analysed column shows the number of residues for which the sidechain conformation was analysed, and the total number of residues.

Mol	Chain	Analysed	Rotameric	Outliers	Percentiles
1	A	840/869 (97%)	796 (95%)	44 (5%)	29 62
2	B	234/266 (88%)	224 (96%)	10 (4%)	35 70
3	G	32/62 (52%)	32 (100%)	0	100 100
All	All	1106/1197 (92%)	1052 (95%)	54 (5%)	31 65

All (54) residues with a non-rotameric sidechain are listed below:

Mol	Chain	Res	Type
1	A	51	LEU
1	A	57	THR
1	A	61	ARG
1	A	63	LEU
1	A	72	LEU
1	A	128	ASP
1	A	165	VAL

Continued on next page...

Continued from previous page...

Mol	Chain	Res	Type
1	A	213	VAL
1	A	217	SER
1	A	218	LEU
1	A	226	THR
1	A	231	PHE
1	A	245	PHE
1	A	248	ASN
1	A	250	VAL
1	A	255	ARG
1	A	261	THR
1	A	284	ILE
1	A	309	LEU
1	A	344	LEU
1	A	354	LYS
1	A	391	MET
1	A	413	LYS
1	A	434	GLN
1	A	454	SER
1	A	457	LEU
1	A	524	ASN
1	A	540	ASN
1	A	557	HIS
1	A	581	THR
1	A	636	GLU
1	A	670	LEU
1	A	682	LEU
1	A	712	VAL
1	A	719	VAL
1	A	726	LYS
1	A	806	THR
1	A	811	ASP
1	A	833	LYS
1	A	847	GLU
1	A	880	PRO
1	A	974	THR
1	A	987	TRP
1	A	1019	GLN
2	B	28	ARG
2	B	73	VAL
2	B	107	HIS
2	B	139	ASP
2	B	193	LYS

Continued on next page...

Continued from previous page...

Mol	Chain	Res	Type
2	B	194	ASN
2	B	200	GLU
2	B	223	ARG
2	B	251	ARG
2	B	289	GLU

Some sidechains can be flipped to improve hydrogen bonding and reduce clashes. All (21) such sidechains are listed below:

Mol	Chain	Res	Type
1	A	118	GLN
1	A	129	ASN
1	A	163	ASN
1	A	225	GLN
1	A	290	HIS
1	A	434	GLN
1	A	524	ASN
1	A	540	ASN
1	A	557	HIS
1	A	577	ASN
1	A	754	ASN
1	A	797	ASN
1	A	826	GLN
1	A	905	GLN
1	A	1019	GLN
2	B	80	HIS
2	B	194	ASN
2	B	207	ASN
2	B	264	GLN
2	B	271	ASN
2	B	284	ASN

5.3.3 RNA ⓘ

There are no RNA molecules in this entry.

5.4 Non-standard residues in protein, DNA, RNA chains ⓘ

There are no non-standard protein/DNA/RNA residues in this entry.

5.5 Carbohydrates

There are no carbohydrates in this entry.

5.6 Ligand geometry

Of 12 ligands modelled in this entry, 7 are monoatomic - leaving 5 for Mogul analysis.

In the following table, the Counts columns list the number of bonds (or angles) for which Mogul statistics could be retrieved, the number of bonds (or angles) that are observed in the model and the number of bonds (or angles) that are defined in the chemical component dictionary. The Link column lists molecule types, if any, to which the group is linked. The Z score for a bond length (or angle) is the number of standard deviations the observed value is removed from the expected value. A bond length (or angle) with $|Z| > 2$ is considered an outlier worth inspection. RMSZ is the root-mean-square of all Z scores of the bond lengths (or angles).

Mol	Type	Chain	Res	Link	Bond lengths			Bond angles		
					Counts	RMSZ	$\# Z > 2$	Counts	RMSZ	$\# Z > 2$
4	MF4	A	2001	1	0,4,4	0.00	-	0,6,6	0.00	-
8	CLR	B	3001	-	31,31,31	0.44	0	48,48,48	1.05	5 (10%)
9	NAG	B	4001	9,2	14,14,15	0.49	0	15,19,21	0.94	1 (6%)
9	NAG	B	4002	9	14,14,15	0.62	0	15,19,21	1.44	1 (6%)
9	NAG	B	4021	2	14,14,15	0.58	0	15,19,21	1.07	1 (6%)

In the following table, the Chirals column lists the number of chiral outliers, the number of chiral centers analysed, the number of these observed in the model and the number defined in the chemical component dictionary. Similar counts are reported in the Torsion and Rings columns. '-' means no outliers of that kind were identified.

Mol	Type	Chain	Res	Link	Chirals	Torsions	Rings
4	MF4	A	2001	1	-	0/0/0/0	0/0/0/0
8	CLR	B	3001	-	-	0/10/68/68	0/4/4/4
9	NAG	B	4001	9,2	-	0/6/23/26	0/1/1/1
9	NAG	B	4002	9	-	0/6/23/26	0/1/1/1
9	NAG	B	4021	2	-	0/6/23/26	0/1/1/1

There are no bond length outliers.

All (8) bond angle outliers are listed below:

Mol	Chain	Res	Type	Atoms	Z	Observed(°)	Ideal(°)
8	B	3001	CLR	C4-C5-C6	-2.15	117.05	120.60
8	B	3001	CLR	C12-C11-C9	2.03	116.78	113.09
8	B	3001	CLR	C4-C5-C10	2.22	119.63	116.41

Continued on next page...

Continued from previous page...

Mol	Chain	Res	Type	Atoms	Z	Observed(°)	Ideal(°)
9	B	4021	NAG	C1-O5-C5	2.44	115.73	112.14
8	B	3001	CLR	C1-C2-C3	2.49	113.73	110.41
9	B	4001	NAG	C1-O5-C5	2.53	115.87	112.14
8	B	3001	CLR	C15-C14-C13	3.02	107.37	103.83
9	B	4002	NAG	C2-N2-C7	4.26	128.65	123.11

There are no chirality outliers.

There are no torsion outliers.

There are no ring outliers.

No monomer is involved in short contacts.

5.7 Other polymers [i](#)

There are no such residues in this entry.

5.8 Polymer linkage issues [i](#)

There are no chain breaks in this entry.

6 Fit of model and data

6.1 Protein, DNA and RNA chains

In the following table, the column labelled ‘#RSRZ> 2’ contains the number (and percentage) of RSRZ outliers, followed by percent RSRZ outliers for the chain as percentile scores relative to all X-ray entries and entries of similar resolution. The OWAB column contains the minimum, median, 95th percentile and maximum values of the occupancy-weighted average B-factor per residue. The column labelled ‘Q< 0.9’ lists the number of (and percentage) of residues with an average occupancy less than 0.9.

Mol	Chain	Analysed	<RSRZ>	#RSRZ>2	OWAB(Å ²)	Q<0.9
1	A	992/1028 (96%)	0.54	75 (7%) 17 9	64, 86, 127, 152	0
2	B	268/305 (87%)	1.14	55 (20%) 1 1	85, 136, 160, 170	0
3	G	39/74 (52%)	0.17	1 (2%) 59 47	81, 90, 133, 137	0
All	All	1299/1407 (92%)	0.65	131 (10%) 9 4	64, 91, 148, 170	0

All (131) RSRZ outliers are listed below:

Mol	Chain	Res	Type	RSRZ
2	B	214	ARG	7.2
2	B	123	PRO	6.5
1	A	894	TRP	5.9
1	A	579	PRO	5.2
1	A	568	GLY	5.0
2	B	121	ASN	5.0
2	B	270	GLN	4.8
2	B	195	THR	4.8
2	B	271	ASN	4.8
1	A	534	MET	4.7
2	B	194	ASN	4.6
1	A	317	TRP	4.6
1	A	498	SER	4.6
2	B	274	LEU	4.6
2	B	255	LYS	4.5
1	A	41	MET	4.4
1	A	79	SER	4.4
1	A	313	LEU	4.3
2	B	272	MET	4.2
1	A	117	ILE	4.2
2	B	93	ILE	4.2
1	A	578	PHE	4.1
1	A	567	GLU	4.1

Continued on next page...

Continued from previous page...

Mol	Chain	Res	Type	RSRZ
2	B	122	SER	4.0
1	A	504	LEU	3.9
1	A	260	TYR	3.9
2	B	96	PRO	3.8
1	A	585	PHE	3.7
2	B	99	TYR	3.6
2	B	203	GLN	3.6
1	A	573	ALA	3.6
1	A	427	LEU	3.6
1	A	312	ILE	3.5
1	A	574	ASP	3.5
1	A	503	TYR	3.5
2	B	215	CYS	3.5
1	A	127	ASN	3.5
2	B	298	GLU	3.4
2	B	25	PHE	3.4
1	A	492	ILE	3.3
2	B	273	GLU	3.3
1	A	563	ASP	3.3
1	A	89	TRP	3.2
1	A	183	GLU	3.2
1	A	529	PRO	3.2
1	A	558	PHE	3.1
2	B	303	VAL	3.0
1	A	464	CYS	3.0
2	B	223	ARG	3.0
1	A	72	LEU	2.9
1	A	562	GLU	2.9
2	B	204	ALA	2.9
2	B	205	ASN	2.9
2	B	216	ALA	2.9
2	B	231	TYR	2.9
1	A	57	THR	2.8
1	A	675	THR	2.8
1	A	90	ILE	2.8
2	B	304	LYS	2.8
2	B	202	LEU	2.8
1	A	501	SER	2.8
1	A	576	PRO	2.7
2	B	147	LYS	2.7
1	A	490	LEU	2.7
1	A	530	LEU	2.7

Continued on next page...

Continued from previous page...

Mol	Chain	Res	Type	RSRZ
2	B	92	SER	2.7
1	A	126	ALA	2.7
2	B	115	GLU	2.7
1	A	121	THR	2.7
1	A	42	ASP	2.6
2	B	225	LYS	2.6
2	B	130	THR	2.6
1	A	582	ASP	2.6
2	B	257	LEU	2.6
1	A	131	TYR	2.6
2	B	120	GLY	2.6
1	A	536	GLU	2.5
1	A	571	PHE	2.5
1	A	84	PRO	2.5
1	A	521	ILE	2.5
1	A	815	ASP	2.5
2	B	100	GLU	2.5
1	A	779	THR	2.5
3	G	13	THR	2.5
2	B	305	SER	2.5
2	B	192	LEU	2.5
1	A	566	ASN	2.4
1	A	412	ASP	2.4
1	A	86	THR	2.4
1	A	149	TYR	2.4
2	B	126	ASP	2.4
2	B	136	LYS	2.4
1	A	114	ALA	2.4
2	B	80	HIS	2.4
1	A	308	ILE	2.4
2	B	268	LEU	2.4
1	A	896	SER	2.4
1	A	411	PHE	2.3
2	B	206	TYR	2.3
1	A	499	SER	2.3
2	B	156	TRP	2.3
2	B	296	ARG	2.3
2	B	207	ASN	2.3
1	A	470	MET	2.3
1	A	32	LEU	2.3
2	B	172	GLU	2.3
1	A	55	TYR	2.2

Continued on next page...

Continued from previous page...

Mol	Chain	Res	Type	RSRZ
1	A	480	ILE	2.2
2	B	155	MET	2.2
1	A	523	LEU	2.2
2	B	230	GLU	2.2
1	A	475	PRO	2.2
1	A	515	LEU	2.2
1	A	533	ASP	2.2
1	A	879	LEU	2.2
2	B	198	LEU	2.1
1	A	826	GLN	2.1
1	A	38	GLU	2.1
2	B	229	ILE	2.1
1	A	113	LEU	2.1
2	B	224	GLU	2.1
2	B	232	PHE	2.1
2	B	199	PRO	2.1
1	A	930	GLN	2.0
2	B	132	ALA	2.0
1	A	531	LYS	2.0
1	A	482	PHE	2.0
1	A	94	ARG	2.0
1	A	380	THR	2.0
1	A	478	VAL	2.0
2	B	104	LYS	2.0

6.2 Non-standard residues in protein, DNA, RNA chains [i](#)

There are no non-standard protein/DNA/RNA residues in this entry.

6.3 Carbohydrates [i](#)

There are no carbohydrates in this entry.

6.4 Ligands [i](#)

In the following table, the Atoms column lists the number of modelled atoms in the group and the number defined in the chemical component dictionary. LLDF column lists the quality of electron density of the group with respect to its neighbouring residues in protein, DNA or RNA chains. The B-factors column lists the minimum, median, 95th percentile and maximum values of B factors of atoms in the group. The column labelled 'Q < 0.9' lists the number of atoms with occupancy less than 0.9.

Mol	Type	Chain	Res	Atoms	RSCC	RSR	LLDF	B-factors(\AA^2)	Q<0.9
4	MF4	A	2001	5/5	0.92	0.36	2.65	69,71,72,73	0
5	MG	A	2002	1/1	0.78	0.37	2.60	66,66,66,66	0
8	CLR	B	3001	28/28	0.83	0.28	1.72	128,128,128,129	0
6	K	A	2007[A]	1/1	0.95	0.11	-2.52	82,82,82,82	1
7	RB	A	2008[B]	1/1	0.95	0.11	-2.52	82,82,82,82	1
6	K	A	2003[A]	1/1	0.97	0.12	-4.93	87,87,87,87	1
7	RB	A	2004[B]	1/1	0.97	0.12	-4.93	87,87,87,87	1
6	K	A	2005[A]	1/1	0.99	0.18	-5.42	87,87,87,87	1
7	RB	A	2006[B]	1/1	0.99	0.18	-5.42	87,87,87,87	1
9	NAG	B	4002	14/15	0.50	0.38	-	149,149,150,150	0
9	NAG	B	4001	14/15	0.82	0.24	-	142,145,146,147	0
9	NAG	B	4021	14/15	0.69	0.43	-	148,149,149,149	0

6.5 Other polymers [i](#)

There are no such residues in this entry.