



wwPDB X-ray Structure Validation Summary Report ⓘ

Feb 1, 2016 – 03:01 PM GMT

PDB ID : 4B9S
Title : Structure of the high fidelity DNA polymerase I with an oxidative formamido pyrimidine-dG DNA lesion outside of the pre-insertion site.
Authors : Gehrke, T.H.; Lischke, U.; Arnold, S.; Schneider, S.; Carell, T.
Deposited on : 2012-09-06
Resolution : 1.73 Å(reported)

This is a wwPDB X-ray Structure Validation Summary Report for a publicly released PDB entry.
We welcome your comments at validation@mail.wwpdb.org
A user guide is available at
<http://wwpdb.org/validation/2016/XrayValidationReportHelp>
with specific help available everywhere you see the ⓘ symbol.

The following versions of software and data (see [references ⓘ](#)) were used in the production of this report:

MolProbity : 4.02b-467
Mogul : 1.7 (RC4), CSD as536be (2015)
Xtriage (Phenix) : 1.9-1692
EDS : rb-20026688
Percentile statistics : 20151230.v01 (using entries in the PDB archive December 30th 2015)
Refmac : 5.8.0135
CCP4 : 6.5.0
Ideal geometry (proteins) : Engh & Huber (2001)
Ideal geometry (DNA, RNA) : Parkinson et al. (1996)
Validation Pipeline (wwPDB-VP) : trunk26865

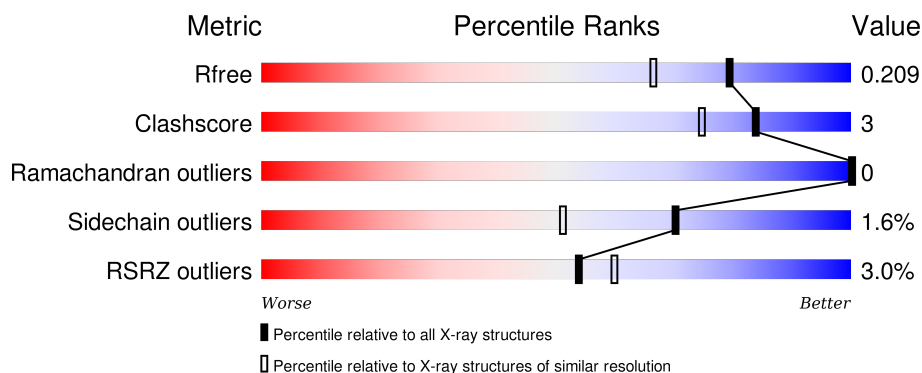
1 Overall quality at a glance

The following experimental techniques were used to determine the structure:

X-RAY DIFFRACTION

The reported resolution of this entry is 1.73 Å.

Percentile scores (ranging between 0-100) for global validation metrics of the entry are shown in the following graphic. The table shows the number of entries on which the scores are based.



Metric	Whole archive (#Entries)	Similar resolution (#Entries, resolution range(Å))
R_{free}	91344	2417 (1.76-1.72)
Clashscore	102246	2570 (1.76-1.72)
Ramachandran outliers	100387	2544 (1.76-1.72)
Sidechain outliers	100360	2544 (1.76-1.72)
RSRZ outliers	91569	2420 (1.76-1.72)

The table below summarises the geometric issues observed across the polymeric chains and their fit to the electron density. The red, orange, yellow and green segments on the lower bar indicate the fraction of residues that contain outliers for ≥ 3 , 2, 1 and 0 types of geometric quality criteria. A grey segment represents the fraction of residues that are not modelled. The numeric value for each fraction is indicated below the corresponding segment, with a dot representing fractions $\leq 5\%$. The upper red bar (where present) indicates the fraction of residues that have poor fit to the electron density. The numeric value is given above the bar.

Mol	Chain	Length	Quality of chain
1	A	619	<div> <div>2%</div> <div>88%</div> <div>5%</div> <div>6%</div> </div>
2	B	10	<div> <div>10%</div> <div>50%</div> <div>20%</div> <div>30%</div> </div>
3	C	15	<div> <div>13%</div> <div>40%</div> <div>40%</div> <div>20%</div> </div>

The following table lists non-polymeric compounds, carbohydrate monomers and non-standard residues in protein, DNA, RNA chains that are outliers for geometric or electron-density-fit criteria:

Mol	Type	Chain	Res	Chirality	Geometry	Clashes	Electron density
3	FOX	C	4	X	-	-	-
4	SO4	A	1878	-	-	-	X
6	SUC	A	1883	-	-	-	X

2 Entry composition

There are 7 unique types of molecules in this entry. The entry contains 5474 atoms, of which 0 are hydrogens and 0 are deuteriums.

In the tables below, the ZeroOcc column contains the number of atoms modelled with zero occupancy, the AltConf column contains the number of residues with at least one atom in alternate conformation and the Trace column contains the number of residues modelled with at most 2 atoms.

- Molecule 1 is a protein called DNA POLYMERASE.

Mol	Chain	Residues	Atoms					ZeroOcc	AltConf	Trace
			Total	C	N	O	S			
1	A	579	4677	2977	812	871	17	0	6	0

There are 39 discrepancies between the modelled and reference sequences:

Chain	Residue	Modelled	Actual	Comment	Reference
A	258	MET	-	EXPRESSION TAG	UNP E1C9K5
A	259	ALA	-	EXPRESSION TAG	UNP E1C9K5
A	260	SER	-	EXPRESSION TAG	UNP E1C9K5
A	261	TRP	-	EXPRESSION TAG	UNP E1C9K5
A	262	SER	-	EXPRESSION TAG	UNP E1C9K5
A	263	HIS	-	EXPRESSION TAG	UNP E1C9K5
A	264	PRO	-	EXPRESSION TAG	UNP E1C9K5
A	265	GLN	-	EXPRESSION TAG	UNP E1C9K5
A	266	PHE	-	EXPRESSION TAG	UNP E1C9K5
A	267	GLU	-	EXPRESSION TAG	UNP E1C9K5
A	268	LYS	-	EXPRESSION TAG	UNP E1C9K5
A	269	GLY	-	EXPRESSION TAG	UNP E1C9K5
A	270	ALA	-	EXPRESSION TAG	UNP E1C9K5
A	271	SER	-	EXPRESSION TAG	UNP E1C9K5
A	272	THR	-	EXPRESSION TAG	UNP E1C9K5
A	273	SER	-	EXPRESSION TAG	UNP E1C9K5
A	274	LEU	-	EXPRESSION TAG	UNP E1C9K5
A	275	TYR	-	EXPRESSION TAG	UNP E1C9K5
A	276	LYS	-	EXPRESSION TAG	UNP E1C9K5
A	277	LYS	-	EXPRESSION TAG	UNP E1C9K5
A	278	ALA	-	EXPRESSION TAG	UNP E1C9K5
A	279	GLY	-	EXPRESSION TAG	UNP E1C9K5
A	280	SER	-	EXPRESSION TAG	UNP E1C9K5
A	281	ALA	-	EXPRESSION TAG	UNP E1C9K5
A	282	ALA	-	EXPRESSION TAG	UNP E1C9K5
A	283	ALA	-	EXPRESSION TAG	UNP E1C9K5
A	284	VAL	-	EXPRESSION TAG	UNP E1C9K5

Continued on next page...

Continued from previous page...

Chain	Residue	Modelled	Actual	Comment	Reference
A	285	LEU	-	EXPRESSION TAG	UNP E1C9K5
A	286	GLU	-	EXPRESSION TAG	UNP E1C9K5
A	287	GLU	-	EXPRESSION TAG	UNP E1C9K5
A	288	ASN	-	EXPRESSION TAG	UNP E1C9K5
A	289	LEU	-	EXPRESSION TAG	UNP E1C9K5
A	290	TYR	-	EXPRESSION TAG	UNP E1C9K5
A	291	PHE	-	EXPRESSION TAG	UNP E1C9K5
A	292	GLN	-	EXPRESSION TAG	UNP E1C9K5
A	293	GLY	-	EXPRESSION TAG	UNP E1C9K5
A	294	SER	-	EXPRESSION TAG	UNP E1C9K5
A	295	PHE	-	EXPRESSION TAG	UNP E1C9K5
A	296	THR	-	EXPRESSION TAG	UNP E1C9K5

- Molecule 2 is a DNA chain called 5'-D(*AP*CP*CP*TP*GP*AP*CP*TP*CP*TP)-3'.

Mol	Chain	Residues	Atoms					ZeroOcc	AltConf	Trace
2	B	10	Total	C	N	O	P	0	0	0
			200	96	33	61	10			

- Molecule 3 is a DNA chain called 5'-D(*CP*AP*TP*FOXP*AP*GP*AP*GP*TP*CP*AP*GP*GP*TP*TP)-3'.

Mol	Chain	Residues	Atoms					ZeroOcc	AltConf	Trace
3	C	12	Total	C	N	O	P	0	0	0
			239	116	45	67	11			

- Molecule 4 is SULFATE ION (three-letter code: SO4) (formula: O₄S).

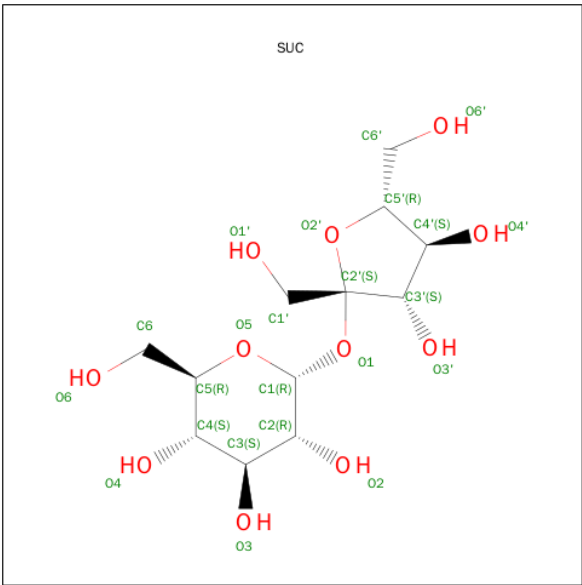


Mol	Chain	Residues	Atoms			ZeroOcc	AltConf
4	A	1	Total	O	S	0	0
			5	4	1		
4	A	1	Total	O	S	0	0
			5	4	1		
4	A	1	Total	O	S	0	0
			5	4	1		
4	A	1	Total	O	S	0	0
			5	4	1		
4	A	1	Total	O	S	0	0
			5	4	1		

- Molecule 5 is MAGNESIUM ION (three-letter code: MG) (formula: Mg).

Mol	Chain	Residues	Atoms		ZeroOcc	AltConf
5	A	1	Total	Mg	0	0
			1	1		

- Molecule 6 is SUGAR (SUCROSE) (three-letter code: SUC) (formula: C₁₂H₂₂O₁₁).



Mol	Chain	Residues	Atoms			ZeroOcc	AltConf
6	A	1	Total	C	O	0	0
			23	12	11		

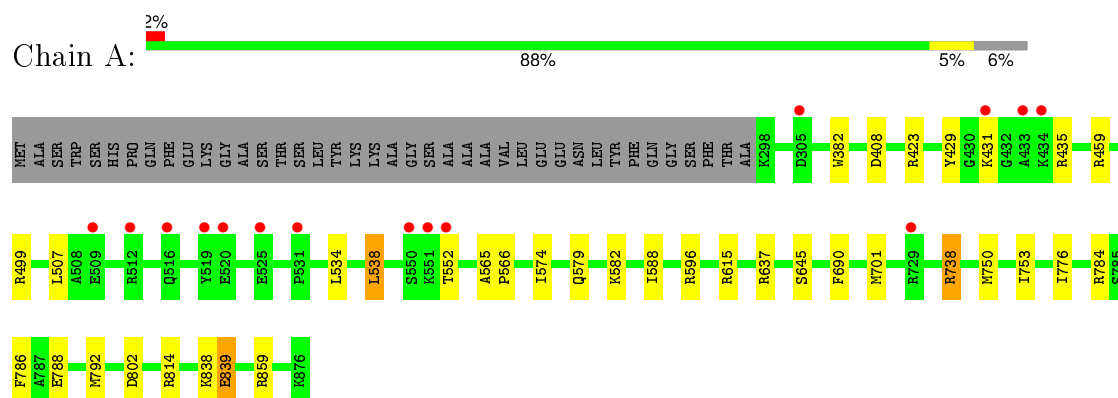
- Molecule 7 is water.

Mol	Chain	Residues	Atoms		ZeroOcc	AltConf
7	A	288	Total	O	0	0
			288	288		
7	B	11	Total	O	0	0
			11	11		
7	C	10	Total	O	0	0
			10	10		

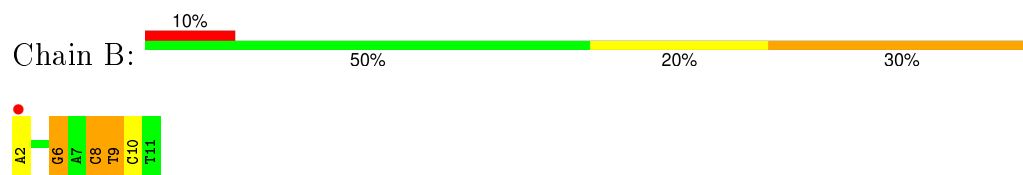
3 Residue-property plots [i](#)

These plots are drawn for all protein, RNA and DNA chains in the entry. The first graphic for a chain summarises the proportions of errors displayed in the second graphic. The second graphic shows the sequence view annotated by issues in geometry and electron density. Residues are color-coded according to the number of geometric quality criteria for which they contain at least one outlier: green = 0, yellow = 1, orange = 2 and red = 3 or more. A red dot above a residue indicates a poor fit to the electron density ($\text{RSRZ} > 2$). Stretches of 2 or more consecutive residues without any outlier are shown as a green connector. Residues present in the sample, but not in the model, are shown in grey.

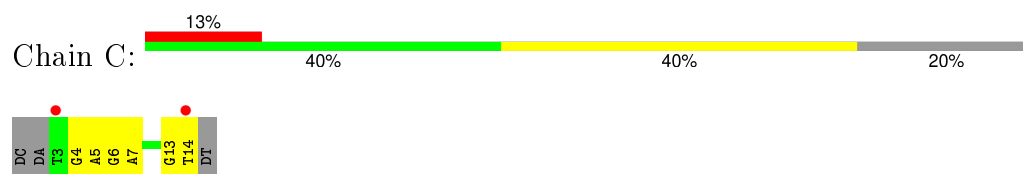
• Molecule 1: DNA POLYMERASE



• Molecule 2: 5'-D(*AP*CP*CP*TP*GP*AP*CP*TP*CP*TP)-3'



• Molecule 3: 5'-D(*CP*AP*TP*FOXP*AP*GP*AP*GP*TP*CP*AP*GP*GP*TP*TP)-3'



4 Data and refinement statistics

Property	Value	Source
Space group	P 21 21 21	Depositor
Cell constants a, b, c, α , β , γ	88.07Å 93.69Å 105.60Å 90.00° 90.00° 90.00°	Depositor
Resolution (Å)	46.84 – 1.73 46.84 – 1.75	Depositor EDS
% Data completeness (in resolution range)	98.7 (46.84-1.73) 99.6 (46.84-1.75)	Depositor EDS
R_{merge}	0.04	Depositor
R_{sym}	(Not available)	Depositor
$\langle I/\sigma(I) \rangle$ ¹	3.34 (at 1.75Å)	Xtriage
Refinement program	REFMAC 5.6.0117	Depositor
R, R_{free}	0.181 , 0.206 0.184 , 0.209	Depositor DCC
R_{free} test set	4411 reflections (5.26%)	DCC
Wilson B-factor (Å ²)	22.8	Xtriage
Anisotropy	0.581	Xtriage
Bulk solvent k_{sol} (e/Å ³), B_{sol} (Å ²)	0.38 , 42.2	EDS
Estimated twinning fraction	No twinning to report.	Xtriage
L-test for twinning ²	$\langle L \rangle = 0.48$, $\langle L^2 \rangle = 0.31$	Xtriage
Outliers	0 of 88217 reflections	Xtriage
F_o, F_c correlation	0.96	EDS
Total number of atoms	5474	wwPDB-VP
Average B, all atoms (Å ²)	27.0	wwPDB-VP

Xtriage's analysis on translational NCS is as follows: *The largest off-origin peak in the Patterson function is 4.04% of the height of the origin peak. No significant pseudotranslation is detected.*

¹Intensities estimated from amplitudes.

²Theoretical values of $\langle |L| \rangle$, $\langle L^2 \rangle$ for acentric reflections are 0.5, 0.375 respectively for untwinned datasets, and 0.333, 0.2 for perfectly twinned datasets.

5 Model quality [i](#)

5.1 Standard geometry [i](#)

Bond lengths and bond angles in the following residue types are not validated in this section: SUC, MG, FOX, SO4

The Z score for a bond length (or angle) is the number of standard deviations the observed value is removed from the expected value. A bond length (or angle) with $|Z| > 5$ is considered an outlier worth inspection. RMSZ is the root-mean-square of all Z scores of the bond lengths (or angles).

Mol	Chain	Bond lengths		Bond angles	
		RMSZ	$\# Z > 5$	RMSZ	$\# Z > 5$
1	A	0.89	2/4778 (0.0%)	0.90	9/6456 (0.1%)
2	B	1.18	3/222 (1.4%)	1.17	2/339 (0.6%)
3	C	1.32	5/253 (2.0%)	1.01	0/388
All	All	0.93	10/5253 (0.2%)	0.92	11/7183 (0.2%)

Chiral center outliers are detected by calculating the chiral volume of a chiral center and verifying if the center is modelled as a planar moiety or with the opposite hand. A planarity outlier is detected by checking planarity of atoms in a peptide group, atoms in a mainchain group or atoms of a sidechain that are expected to be planar.

Mol	Chain	#Chirality outliers	#Planarity outliers
3	C	1	0

The worst 5 of 10 bond length outliers are listed below:

Mol	Chain	Res	Type	Atoms	Z	Observed(Å)	Ideal(Å)
3	C	5	DA	O3'-P	-9.02	1.50	1.61
3	C	7	DA	O3'-P	-8.27	1.51	1.61
2	B	8	DC	O3'-P	-7.92	1.51	1.61
3	C	6	DG	O3'-P	-7.36	1.52	1.61
2	B	9	DT	O3'-P	-6.87	1.52	1.61

The worst 5 of 11 bond angle outliers are listed below:

Mol	Chain	Res	Type	Atoms	Z	Observed(°)	Ideal(°)
2	B	9	DT	O5'-P-OP2	-12.01	94.90	105.70
1	A	423	ARG	NE-CZ-NH2	-7.71	116.45	120.30
1	A	423	ARG	NE-CZ-NH1	7.38	123.99	120.30
1	A	859	ARG	NE-CZ-NH1	6.54	123.57	120.30
1	A	596	ARG	NE-CZ-NH2	-6.18	117.21	120.30

All (1) chirality outliers are listed below:

Mol	Chain	Res	Type	Atom
3	C	4	FOX	C1'

There are no planarity outliers.

5.2 Too-close contacts ⓘ

In the following table, the Non-H and H(model) columns list the number of non-hydrogen atoms and hydrogen atoms in the chain respectively. The H(added) column lists the number of hydrogen atoms added and optimized by MolProbity. The Clashes column lists the number of clashes within the asymmetric unit, whereas Symm-Clashes lists symmetry related clashes.

Mol	Chain	Non-H	H(model)	H(added)	Clashes	Symm-Clashes
1	A	4677	0	4755	27	0
2	B	200	0	114	4	0
3	C	239	0	133	6	0
4	A	25	0	0	0	0
5	A	1	0	0	0	0
6	A	23	0	22	1	0
7	A	288	0	0	1	0
7	B	11	0	0	0	0
7	C	10	0	0	0	0
All	All	5474	0	5024	30	0

The all-atom clashscore is defined as the number of clashes found per 1000 atoms (including hydrogen atoms). The all-atom clashscore for this structure is 3.

The worst 5 of 30 close contacts within the same asymmetric unit are listed below, sorted by their clash magnitude.

Atom-1	Atom-2	Interatomic distance (Å)	Clash overlap (Å)
1:A:552:THR:HG22	2:B:6:DG:OP1	1.45	1.17
1:A:750:MET:SD	1:A:792:MET:HB3	2.03	0.98
1:A:507:LEU:HD12	1:A:588:ILE:CD1	2.02	0.90
1:A:838:LYS:HG2	1:A:839:GLU:OE2	1.75	0.85
1:A:507:LEU:HD12	1:A:588:ILE:HD12	1.68	0.75

There are no symmetry-related clashes.

5.3 Torsion angles [i](#)

5.3.1 Protein backbone [i](#)

In the following table, the Percentiles column shows the percent Ramachandran outliers of the chain as a percentile score with respect to all X-ray entries followed by that with respect to entries of similar resolution.

The Analysed column shows the number of residues for which the backbone conformation was analysed, and the total number of residues.

Mol	Chain	Analysed	Favoured	Allowed	Outliers	Percentiles	
1	A	583/619 (94%)	570 (98%)	13 (2%)	0	100	100

There are no Ramachandran outliers to report.

5.3.2 Protein sidechains [i](#)

In the following table, the Percentiles column shows the percent sidechain outliers of the chain as a percentile score with respect to all X-ray entries followed by that with respect to entries of similar resolution.

The Analysed column shows the number of residues for which the sidechain conformation was analysed, and the total number of residues.

Mol	Chain	Analysed	Rotameric	Outliers	Percentiles	
1	A	501/526 (95%)	493 (98%)	8 (2%)	70	51

5 of 8 residues with a non-rotameric sidechain are listed below:

Mol	Chain	Res	Type
1	A	538	LEU
1	A	776	ILE
1	A	645	SER
1	A	499	ARG
1	A	579	GLN

Some sidechains can be flipped to improve hydrogen bonding and reduce clashes. All (3) such sidechains are listed below:

Mol	Chain	Res	Type
1	A	529	ASN
1	A	579	GLN
1	A	723	GLN

5.3.3 RNA ⓘ

There are no RNA molecules in this entry.

5.4 Non-standard residues in protein, DNA, RNA chains ⓘ

1 non-standard protein/DNA/RNA residue is modelled in this entry.

In the following table, the Counts columns list the number of bonds (or angles) for which Mogul statistics could be retrieved, the number of bonds (or angles) that are observed in the model and the number of bonds (or angles) that are defined in the chemical component dictionary. The Link column lists molecule types, if any, to which the group is linked. The Z score for a bond length (or angle) is the number of standard deviations the observed value is removed from the expected value. A bond length (or angle) with $|Z| > 2$ is considered an outlier worth inspection. RMSZ is the root-mean-square of all Z scores of the bond lengths (or angles).

Mol	Type	Chain	Res	Link	Bond lengths			Bond angles		
					Counts	RMSZ	$\# Z > 2$	Counts	RMSZ	$\# Z > 2$
3	FOX	C	4	3	8,13,25	1.60	1 (12%)	10,17,36	1.56	1 (10%)

In the following table, the Chirals column lists the number of chiral outliers, the number of chiral centers analysed, the number of these observed in the model and the number defined in the chemical component dictionary. Similar counts are reported in the Torsion and Rings columns. '-' means no outliers of that kind were identified.

Mol	Type	Chain	Res	Link	Chirals	Torsions	Rings
3	FOX	C	4	3	1/1/4/7	0/3/19/25	0/1/1/2

All (1) bond length outliers are listed below:

Mol	Chain	Res	Type	Atoms	Z	Observed(Å)	Ideal(Å)
3	C	4	FOX	C4-N9	-4.29	1.34	1.46

All (1) bond angle outliers are listed below:

Mol	Chain	Res	Type	Atoms	Z	Observed(°)	Ideal(°)
3	C	4	FOX	C4'-C6'-C1'	4.04	110.39	103.93

All (1) chirality outliers are listed below:

Mol	Chain	Res	Type	Atom
3	C	4	FOX	C1'

There are no torsion outliers.

There are no ring outliers.

1 monomer is involved in 4 short contacts:

Mol	Chain	Res	Type	Clashes	Symm-Clashes
3	C	4	FOX	4	0

5.5 Carbohydrates [i](#)

There are no carbohydrates in this entry.

5.6 Ligand geometry [i](#)

Of 7 ligands modelled in this entry, 1 is monoatomic - leaving 6 for Mogul analysis.

In the following table, the Counts columns list the number of bonds (or angles) for which Mogul statistics could be retrieved, the number of bonds (or angles) that are observed in the model and the number of bonds (or angles) that are defined in the chemical component dictionary. The Link column lists molecule types, if any, to which the group is linked. The Z score for a bond length (or angle) is the number of standard deviations the observed value is removed from the expected value. A bond length (or angle) with $|Z| > 2$ is considered an outlier worth inspection. RMSZ is the root-mean-square of all Z scores of the bond lengths (or angles).

Mol	Type	Chain	Res	Link	Bond lengths			Bond angles		
					Counts	RMSZ	$\# Z > 2$	Counts	RMSZ	$\# Z > 2$
4	SO4	A	1877	-	4,4,4	2.37	3 (75%)	6,6,6	0.65	0
4	SO4	A	1878	-	4,4,4	1.31	0	6,6,6	0.36	0
4	SO4	A	1879	-	4,4,4	1.63	1 (25%)	6,6,6	0.23	0
4	SO4	A	1880	-	4,4,4	0.57	0	6,6,6	0.26	0
4	SO4	A	1881	-	4,4,4	0.56	0	6,6,6	0.64	0
6	SUC	A	1883	-	24,24,24	0.54	0	36,36,36	0.89	1 (2%)

In the following table, the Chirals column lists the number of chiral outliers, the number of chiral centers analysed, the number of these observed in the model and the number defined in the chemical component dictionary. Similar counts are reported in the Torsion and Rings columns. '-' means no outliers of that kind were identified.

Mol	Type	Chain	Res	Link	Chirals	Torsions	Rings
4	SO4	A	1877	-	-	0/0/0/0	0/0/0/0
4	SO4	A	1878	-	-	0/0/0/0	0/0/0/0
4	SO4	A	1879	-	-	0/0/0/0	0/0/0/0
4	SO4	A	1880	-	-	0/0/0/0	0/0/0/0
4	SO4	A	1881	-	-	0/0/0/0	0/0/0/0
6	SUC	A	1883	-	-	0/12/51/51	0/2/2/2

All (4) bond length outliers are listed below:

Mol	Chain	Res	Type	Atoms	Z	Observed(Å)	Ideal(Å)
4	A	1877	SO4	O2-S	-2.74	1.37	1.47
4	A	1877	SO4	O1-S	-2.42	1.38	1.47
4	A	1877	SO4	O4-S	-2.42	1.38	1.47
4	A	1879	SO4	O4-S	-2.08	1.39	1.47

All (1) bond angle outliers are listed below:

Mol	Chain	Res	Type	Atoms	Z	Observed(°)	Ideal(°)
6	A	1883	SUC	O1'-C1'-C2'	-2.46	104.05	111.91

There are no chirality outliers.

There are no torsion outliers.

There are no ring outliers.

1 monomer is involved in 1 short contact:

Mol	Chain	Res	Type	Clashes	Symm-Clashes
6	A	1883	SUC	1	0

5.7 Other polymers [i](#)

There are no such residues in this entry.

5.8 Polymer linkage issues [i](#)

There are no chain breaks in this entry.

6 Fit of model and data [i](#)

6.1 Protein, DNA and RNA chains [i](#)

In the following table, the column labelled ‘#RSRZ> 2’ contains the number (and percentage) of RSRZ outliers, followed by percent RSRZ outliers for the chain as percentile scores relative to all X-ray entries and entries of similar resolution. The OWAB column contains the minimum, median, 95th percentile and maximum values of the occupancy-weighted average B-factor per residue. The column labelled ‘Q< 0.9’ lists the number of (and percentage) of residues with an average occupancy less than 0.9.

Mol	Chain	Analysed	<RSRZ>	#RSRZ>2	OWAB(Å ²)	Q<0.9
1	A	579/619 (93%)	0.02	15 (2%) 59 66	14, 23, 44, 67	0
2	B	10/10 (100%)	0.30	1 (10%) 9 11	22, 31, 72, 83	0
3	C	11/15 (73%)	0.32	2 (18%) 2 3	21, 27, 66, 73	0
All	All	600/644 (93%)	0.03	18 (3%) 54 60	14, 23, 46, 83	0

The worst 5 of 18 RSRZ outliers are listed below:

Mol	Chain	Res	Type	RSRZ
1	A	433	ALA	7.0
3	C	14	DT	3.3
1	A	431	LYS	3.3
1	A	551	LYS	3.2
2	B	2	DA	3.1

6.2 Non-standard residues in protein, DNA, RNA chains [i](#)

In the following table, the Atoms column lists the number of modelled atoms in the group and the number defined in the chemical component dictionary. LLDF column lists the quality of electron density of the group with respect to its neighbouring residues in protein, DNA or RNA chains. The B-factors column lists the minimum, median, 95th percentile and maximum values of B factors of atoms in the group. The column labelled ‘Q< 0.9’ lists the number of atoms with occupancy less than 0.9.

Mol	Type	Chain	Res	Atoms	RSCC	RSR	LLDF	B-factors(Å ²)	Q<0.9
3	FOX	C	4	13/24	0.88	0.20	-	39,51,70,78	0

6.3 Carbohydrates [i](#)

There are no carbohydrates in this entry.

6.4 Ligands [i](#)

In the following table, the Atoms column lists the number of modelled atoms in the group and the number defined in the chemical component dictionary. LLDF column lists the quality of electron density of the group with respect to its neighbouring residues in protein, DNA or RNA chains. The B-factors column lists the minimum, median, 95th percentile and maximum values of B factors of atoms in the group. The column labelled 'Q< 0.9' lists the number of atoms with occupancy less than 0.9.

Mol	Type	Chain	Res	Atoms	RSCC	RSR	LLDF	B-factors(Å ²)	Q<0.9
6	SUC	A	1883	23/23	0.81	0.31	7.40	17,27,35,37	23
4	SO4	A	1878	5/5	0.92	0.15	5.81	30,35,39,40	0
4	SO4	A	1881	5/5	0.91	0.13	1.37	25,28,30,38	5
4	SO4	A	1877	5/5	0.96	0.11	0.10	40,40,52,52	0
4	SO4	A	1879	5/5	0.97	0.07	-	44,45,52,52	0
5	MG	A	1882	1/1	0.98	0.06	-	36,36,36,36	0
4	SO4	A	1880	5/5	0.97	0.21	-	46,50,53,53	0

6.5 Other polymers [i](#)

There are no such residues in this entry.