



wwPDB X-ray Structure Validation Summary Report ⓘ

Feb 1, 2016 – 07:34 AM GMT

PDB ID : 3BC9
Title : Alpha-amylase B in complex with acarbose
Authors : Tan, T.-C.; Mijts, B.N.; Swaminathan, K.; Patel, B.K.C.; Divne, C.
Deposited on : 2007-11-12
Resolution : 1.35 Å(reported)

This is a wwPDB X-ray Structure Validation Summary Report for a publicly released PDB entry.
We welcome your comments at validation@mail.wwpdb.org
A user guide is available at
<http://wwpdb.org/validation/2016/XrayValidationReportHelp>
with specific help available everywhere you see the ⓘ symbol.

The following versions of software and data (see [references ⓘ](#)) were used in the production of this report:

MolProbity : 4.02b-467
Mogul : 1.7 (RC4), CSD as536be (2015)
Xtriage (Phenix) : 1.9-1692
EDS : rb-20026688
Percentile statistics : 20151230.v01 (using entries in the PDB archive December 30th 2015)
Refmac : 5.8.0135
CCP4 : 6.5.0
Ideal geometry (proteins) : Engh & Huber (2001)
Ideal geometry (DNA, RNA) : Parkinson et al. (1996)
Validation Pipeline (wwPDB-VP) : trunk26865

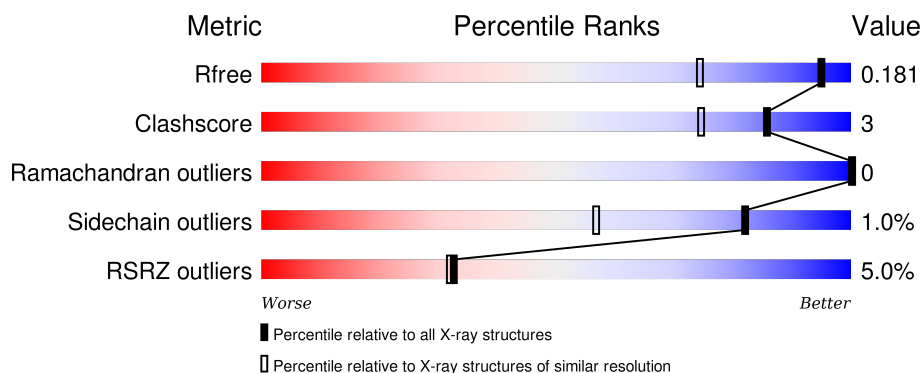
1 Overall quality at a glance

The following experimental techniques were used to determine the structure:

X-RAY DIFFRACTION


The reported resolution of this entry is 1.35 Å.

Percentile scores (ranging between 0-100) for global validation metrics of the entry are shown in the following graphic. The table shows the number of entries on which the scores are based.



Metric	Whole archive (#Entries)	Similar resolution (#Entries, resolution range(Å))
R_{free}	91344	2199 (1.40-1.32)
Clashscore	102246	2337 (1.40-1.32)
Ramachandran outliers	100387	2280 (1.40-1.32)
Sidechain outliers	100360	2279 (1.40-1.32)
RSRZ outliers	91569	2199 (1.40-1.32)

The table below summarises the geometric issues observed across the polymeric chains and their fit to the electron density. The red, orange, yellow and green segments on the lower bar indicate the fraction of residues that contain outliers for ≥ 3 , 2, 1 and 0 types of geometric quality criteria. A grey segment represents the fraction of residues that are not modelled. The numeric value for each fraction is indicated below the corresponding segment, with a dot representing fractions $\leq 5\%$. The upper red bar (where present) indicates the fraction of residues that have poor fit to the electron density. The numeric value is given above the bar.

Mol	Chain	Length	Quality of chain
1	A	599	

The following table lists non-polymeric compounds, carbohydrate monomers and non-standard residues in protein, DNA, RNA chains that are outliers for geometric or electron-density-fit criteria:

Mol	Type	Chain	Res	Chirality	Geometry	Clashes	Electron density
2	GLC	A	802	-	-	-	X

Continued on next page...

Continued from previous page...

Mol	Type	Chain	Res	Chirality	Geometry	Clashes	Electron density
2	ACI	A	803	-	-	-	X
2	BGC	A	809	-	-	-	X
3	ACR	A	901	X	-	-	-
4	GLC	A	1001	-	-	-	X
4	GLC	A	1002	X	-	-	-
5	CA	A	705	-	-	-	X

2 Entry composition [i](#)

There are 7 unique types of molecules in this entry. The entry contains 5566 atoms, of which 0 are hydrogens and 0 are deuteriums.

In the tables below, the ZeroOcc column contains the number of atoms modelled with zero occupancy, the AltConf column contains the number of residues with at least one atom in alternate conformation and the Trace column contains the number of residues modelled with at most 2 atoms.

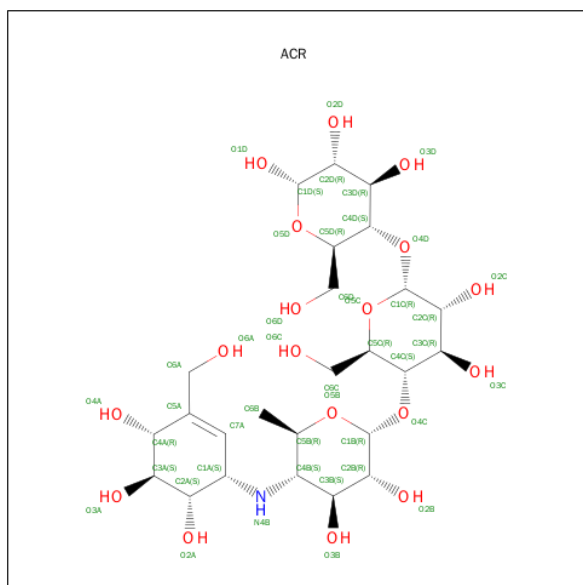
- Molecule 1 is a protein called Alpha amylase, catalytic region.

Mol	Chain	Residues	Atoms					ZeroOcc	AltConf	Trace
1	A	585	Total	C	N	O	S	0	9	0
			4822	3071	780	959	12			

- Molecule 2 is a polymer of unknown type called SUGAR (9-MER).

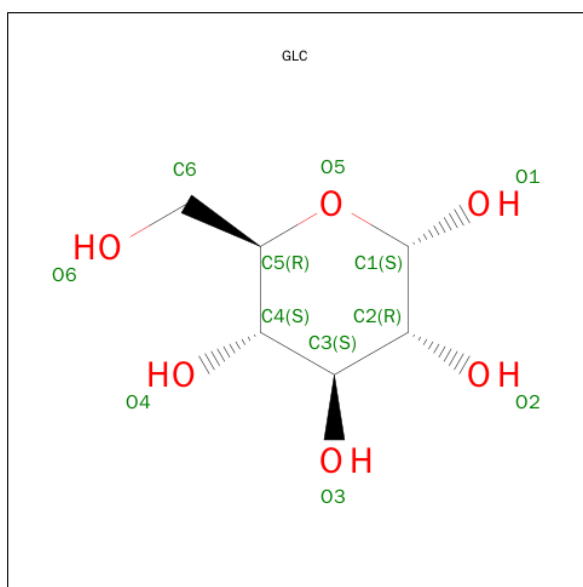
Mol	Chain	Residues	Atoms				ZeroOcc	AltConf
2	A	9	Total	C	N	O	0	0
			97	56	2	39		

- Molecule 3 is SUGAR (ACARBOSE) (three-letter code: ACR) (formula: C₂₅H₄₃NO₁₈).



Mol	Chain	Residues	Atoms				ZeroOcc	AltConf
3	A	1	Total	C	N	O	0	0
			44	25	1	18		

- Molecule 4 is SUGAR (GLUCOSE) (three-letter code: GLC) (formula: C₆H₁₂O₆).



Mol	Chain	Residues	Atoms			ZeroOcc	AltConf
4	A	1	Total	C	O	0	0
			12	6	6		
4	A	1	Total	C	O	0	0
			12	6	6		

- Molecule 5 is CALCIUM ION (three-letter code: CA) (formula: Ca).

Mol	Chain	Residues	Atoms		ZeroOcc	AltConf
5	A	4	Total	Ca	0	0
			4	4		

- Molecule 6 is SODIUM ION (three-letter code: NA) (formula: Na).

Mol	Chain	Residues	Atoms		ZeroOcc	AltConf
6	A	1	Total	Na	0	0
			1	1		

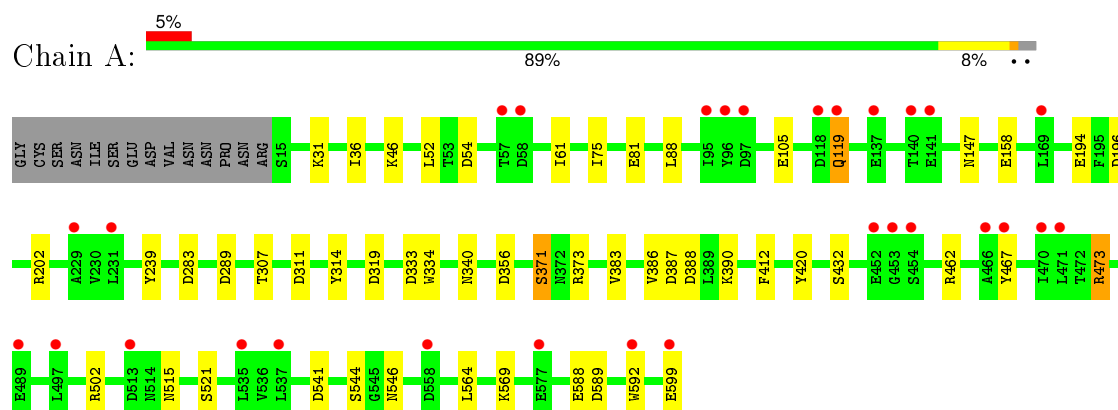
- Molecule 7 is water.

Mol	Chain	Residues	Atoms		ZeroOcc	AltConf
7	A	574	Total	O	0	0
			574	574		

3 Residue-property plots [i](#)

These plots are drawn for all protein, RNA and DNA chains in the entry. The first graphic for a chain summarises the proportions of errors displayed in the second graphic. The second graphic shows the sequence view annotated by issues in geometry and electron density. Residues are color-coded according to the number of geometric quality criteria for which they contain at least one outlier: green = 0, yellow = 1, orange = 2 and red = 3 or more. A red dot above a residue indicates a poor fit to the electron density ($RSRZ > 2$). Stretches of 2 or more consecutive residues without any outlier are shown as a green connector. Residues present in the sample, but not in the model, are shown in grey.

- Molecule 1: Alpha amylase, catalytic region



4 Data and refinement statistics

Property	Value	Source
Space group	C 1 2 1	Depositor
Cell constants a, b, c, α , β , γ	227.85Å 77.24Å 50.38Å 90.00° 98.63° 90.00°	Depositor
Resolution (Å)	30.00 – 1.35 29.71 – 1.35	Depositor EDS
% Data completeness (in resolution range)	99.2 (30.00-1.35) 99.2 (29.71-1.35)	Depositor EDS
R_{merge}	(Not available)	Depositor
R_{sym}	0.08	Depositor
$\langle I/\sigma(I) \rangle$ ¹	1.96 (at 1.35Å)	Xtriage
Refinement program	REFMAC 5.2.0019	Depositor
R, R_{free}	0.151 , 0.178 0.160 , 0.181	Depositor DCC
R_{free} test set	1877 reflections (1.01%)	DCC
Wilson B-factor (Å ²)	13.0	Xtriage
Anisotropy	0.667	Xtriage
Bulk solvent k_{sol} (e/Å ³), B_{sol} (Å ²)	0.41 , 46.4	EDS
Estimated twinning fraction	No twinning to report.	Xtriage
L-test for twinning ²	$\langle L \rangle = 0.48$, $\langle L^2 \rangle = 0.30$	Xtriage
Outliers	0 of 187593 reflections	Xtriage
F_o, F_c correlation	0.97	EDS
Total number of atoms	5566	wwPDB-VP
Average B, all atoms (Å ²)	20.0	wwPDB-VP

Xtriage's analysis on translational NCS is as follows: *The largest off-origin peak in the Patterson function is 5.35% of the height of the origin peak. No significant pseudotranslation is detected.*

¹Intensities estimated from amplitudes.

²Theoretical values of $\langle |L| \rangle$, $\langle L^2 \rangle$ for acentric reflections are 0.5, 0.375 respectively for untwinned datasets, and 0.333, 0.2 for perfectly twinned datasets.

5 Model quality [i](#)

5.1 Standard geometry [i](#)

Bond lengths and bond angles in the following residue types are not validated in this section: BGC, NA, ACI, GLC, GLD, G6D, ACR, CA

The Z score for a bond length (or angle) is the number of standard deviations the observed value is removed from the expected value. A bond length (or angle) with $|Z| > 5$ is considered an outlier worth inspection. RMSZ is the root-mean-square of all Z scores of the bond lengths (or angles).

Mol	Chain	Bond lengths		Bond angles	
		RMSZ	$\# Z > 5$	RMSZ	$\# Z > 5$
1	A	1.05	5/4955 (0.1%)	1.04	19/6751 (0.3%)

Chiral center outliers are detected by calculating the chiral volume of a chiral center and verifying if the center is modelled as a planar moiety or with the opposite hand. A planarity outlier is detected by checking planarity of atoms in a peptide group, atoms in a mainchain group or atoms of a sidechain that are expected to be planar.

Mol	Chain	#Chirality outliers	#Planarity outliers
1	A	0	1

All (5) bond length outliers are listed below:

Mol	Chain	Res	Type	Atoms	Z	Observed(Å)	Ideal(Å)
1	A	588	GLU	CB-CG	-5.91	1.41	1.52
1	A	334	TRP	CZ3-CH2	-5.57	1.31	1.40
1	A	158	GLU	CB-CG	-5.51	1.41	1.52
1	A	194	GLU	CB-CG	-5.23	1.42	1.52
1	A	194	GLU	CG-CD	-5.11	1.44	1.51

The worst 5 of 19 bond angle outliers are listed below:

Mol	Chain	Res	Type	Atoms	Z	Observed(°)	Ideal(°)
1	A	502	ARG	NE-CZ-NH2	10.12	125.36	120.30
1	A	356	ASP	CB-CG-OD2	8.58	126.03	118.30
1	A	502	ARG	NE-CZ-NH1	-8.33	116.13	120.30
1	A	283	ASP	CB-CG-OD2	7.88	125.39	118.30
1	A	467	TYR	CB-CG-CD1	7.84	125.70	121.00

There are no chirality outliers.

All (1) planarity outliers are listed below:

Mol	Chain	Res	Type	Group
1	A	314	TYR	Sidechain

5.2 Too-close contacts

In the following table, the Non-H and H(model) columns list the number of non-hydrogen atoms and hydrogen atoms in the chain respectively. The H(added) column lists the number of hydrogen atoms added and optimized by MolProbity. The Clashes column lists the number of clashes within the asymmetric unit, whereas Symm-Clashes lists symmetry related clashes.

Mol	Chain	Non-H	H(model)	H(added)	Clashes	Symm-Clashes
1	A	4822	0	4443	26	0
2	A	97	0	88	0	0
3	A	44	0	43	0	0
4	A	24	0	23	4	0
5	A	4	0	0	0	0
6	A	1	0	0	0	0
7	A	574	0	0	5	1
All	All	5566	0	4597	27	1

The all-atom clashscore is defined as the number of clashes found per 1000 atoms (including hydrogen atoms). The all-atom clashscore for this structure is 3.

The worst 5 of 27 close contacts within the same asymmetric unit are listed below, sorted by their clash magnitude.

Atom-1	Atom-2	Interatomic distance (Å)	Clash overlap (Å)
1:A:52:LEU:HD23	1:A:61[B]:ILE:HD12	1.48	0.95
1:A:105:GLU:OE1	1:A:569:LYS:HE2	1.89	0.72
1:A:599:GLU:O	7:A:1558:HOH:O	2.09	0.70
1:A:371:SER:HB3	7:A:1402:HOH:O	1.99	0.63
1:A:307:THR:H	4:A:1001:GLC:H62	1.67	0.59

All (1) symmetry-related close contacts are listed below. The label for Atom-2 includes the symmetry operator and encoded unit-cell translations to be applied.

Atom-1	Atom-2	Interatomic distance (Å)	Clash overlap (Å)
7:A:1384:HOH:O	7:A:1405:HOH:O[4_555]	2.07	0.13

5.3 Torsion angles [i](#)

5.3.1 Protein backbone [i](#)

In the following table, the Percentiles column shows the percent Ramachandran outliers of the chain as a percentile score with respect to all X-ray entries followed by that with respect to entries of similar resolution.

The Analysed column shows the number of residues for which the backbone conformation was analysed, and the total number of residues.

Mol	Chain	Analysed	Favoured	Allowed	Outliers	Percentiles	
1	A	592/599 (99%)	577 (98%)	15 (2%)	0	100	100

There are no Ramachandran outliers to report.

5.3.2 Protein sidechains [i](#)

In the following table, the Percentiles column shows the percent sidechain outliers of the chain as a percentile score with respect to all X-ray entries followed by that with respect to entries of similar resolution.

The Analysed column shows the number of residues for which the sidechain conformation was analysed, and the total number of residues.

Mol	Chain	Analysed	Rotameric	Outliers	Percentiles	
1	A	513/517 (99%)	508 (99%)	5 (1%)	82	57

All (5) residues with a non-rotameric sidechain are listed below:

Mol	Chain	Res	Type
1	A	119	GLN
1	A	289	ASP
1	A	371	SER
1	A	473	ARG
1	A	564	LEU

Some sidechains can be flipped to improve hydrogen bonding and reduce clashes. 5 of 6 such sidechains are listed below:

Mol	Chain	Res	Type
1	A	127	GLN
1	A	515	ASN
1	A	147	ASN

Continued on next page...

Continued from previous page...

Mol	Chain	Res	Type
1	A	85	ASN
1	A	248	ASN

5.3.3 RNA ⓘ

There are no RNA molecules in this entry.

5.4 Non-standard residues in protein, DNA, RNA chains ⓘ

There are no non-standard protein/DNA/RNA residues in this entry.

5.5 Carbohydrates ⓘ

9 carbohydrates are modelled in this entry.

In the following table, the Counts columns list the number of bonds (or angles) for which Mogul statistics could be retrieved, the number of bonds (or angles) that are observed in the model and the number of bonds (or angles) that are defined in the chemical component dictionary. The Link column lists molecule types, if any, to which the group is linked. The Z score for a bond length (or angle) is the number of standard deviations the observed value is removed from the expected value. A bond length (or angle) with $|Z| > 2$ is considered an outlier worth inspection. RMSZ is the root-mean-square of all Z scores of the bond lengths (or angles).

Mol	Type	Chain	Res	Link	Bond lengths			Bond angles		
					Counts	RMSZ	$\# Z > 2$	Counts	RMSZ	$\# Z > 2$
2	G6D	A	801	2	10,10,11	1.06	1 (10%)	14,14,16	1.54	4 (28%)
2	GLC	A	802	2	11,11,12	1.09	0	14,15,17	2.24	9 (64%)
2	ACI	A	803	2	11,12,12	1.62	2 (18%)	9,17,17	1.67	3 (33%)
2	GLD	A	804	2	9,9,10	1.32	1 (11%)	10,12,14	1.70	2 (20%)
2	GLC	A	805	2	11,11,12	0.98	1 (9%)	14,15,17	1.68	4 (28%)
2	ACI	A	806	2	11,12,12	2.48	6 (54%)	9,17,17	2.73	3 (33%)
2	GLD	A	807	2	9,9,10	1.04	0	10,12,14	1.58	2 (20%)
2	GLC	A	808	2	11,11,12	1.08	1 (9%)	14,15,17	1.29	1 (7%)
2	BGC	A	809	2	12,12,12	1.13	0	17,17,17	1.47	3 (17%)

In the following table, the Chirals column lists the number of chiral outliers, the number of chiral centers analysed, the number of these observed in the model and the number defined in the chemical component dictionary. Similar counts are reported in the Torsion and Rings columns. '-' means no outliers of that kind were identified.

Mol	Type	Chain	Res	Link	Chirals	Torsions	Rings
2	G6D	A	801	2	-	0/0/17/20	0/1/1/1
2	GLC	A	802	2	-	0/2/19/22	0/1/1/1
2	ACI	A	803	2	-	0/2/22/22	0/1/1/1
2	GLD	A	804	2	-	0/0/13/16	0/1/1/1
2	GLC	A	805	2	-	0/2/19/22	0/1/1/1
2	ACI	A	806	2	-	0/2/22/22	0/1/1/1
2	GLD	A	807	2	-	0/0/13/16	0/1/1/1
2	GLC	A	808	2	-	0/2/19/22	0/1/1/1
2	BGC	A	809	2	-	0/2/22/22	0/1/1/1

The worst 5 of 12 bond length outliers are listed below:

Mol	Chain	Res	Type	Atoms	Z	Observed(Å)	Ideal(Å)
2	A	806	ACI	C3-C4	-3.87	1.48	1.53
2	A	804	GLD	O5-C1	-3.30	1.38	1.43
2	A	801	G6D	O2-C2	-2.25	1.38	1.43
2	A	805	GLC	C4-C5	-2.00	1.48	1.53
2	A	808	GLC	C2-C3	2.13	1.55	1.52

The worst 5 of 31 bond angle outliers are listed below:

Mol	Chain	Res	Type	Atoms	Z	Observed(°)	Ideal(°)
2	A	806	ACI	O6-C6-C5	-6.30	96.90	112.12
2	A	809	BGC	C3-C4-C5	-3.41	104.26	110.20
2	A	807	GLD	O5-C5-C4	-3.29	105.16	109.41
2	A	808	GLC	C2-C3-C4	-3.25	105.52	111.04
2	A	806	ACI	C2-C3-C4	-3.24	106.78	110.73

There are no chirality outliers.

There are no torsion outliers.

There are no ring outliers.

No monomer is involved in short contacts.

5.6 Ligand geometry ⓘ

Of 8 ligands modelled in this entry, 5 are monoatomic - leaving 3 for Mogul analysis.

In the following table, the Counts columns list the number of bonds (or angles) for which Mogul statistics could be retrieved, the number of bonds (or angles) that are observed in the model and the number of bonds (or angles) that are defined in the chemical component dictionary. The Link column lists molecule types, if any, to which the group is linked. The Z score for a bond length (or angle) is the number of standard deviations the observed value is removed from the expected

value. A bond length (or angle) with $|Z| > 2$ is considered an outlier worth inspection. RMSZ is the root-mean-square of all Z scores of the bond lengths (or angles).

Mol	Type	Chain	Res	Link	Bond lengths			Bond angles		
					Counts	RMSZ	$\# Z > 2$	Counts	RMSZ	$\# Z > 2$
4	GLC	A	1001	-	12,12,12	0.99	0	17,17,17	2.61	5 (29%)
4	GLC	A	1002	-	12,12,12	0.49	0	17,17,17	2.29	7 (41%)
3	ACR	A	901	-	46,47,47	0.69	0	58,70,70	1.25	7 (12%)

In the following table, the Chirals column lists the number of chiral outliers, the number of chiral centers analysed, the number of these observed in the model and the number defined in the chemical component dictionary. Similar counts are reported in the Torsion and Rings columns. '-' means no outliers of that kind were identified.

Mol	Type	Chain	Res	Link	Chirals	Torsions	Rings
4	GLC	A	1001	-	-	0/2/22/22	0/1/1/1
4	GLC	A	1002	-	1/1/5/5	0/2/22/22	0/1/1/1
3	ACR	A	901	-	1/1/20/22	0/18/98/98	0/4/4/4

There are no bond length outliers.

The worst 5 of 19 bond angle outliers are listed below:

Mol	Chain	Res	Type	Atoms	Z	Observed(°)	Ideal(°)
4	A	1001	GLC	C4-C3-C2	-6.44	98.78	110.79
4	A	1001	GLC	C6-C5-C4	-5.86	98.55	113.02
3	A	901	ACR	C2A-C3A-C4A	-2.82	107.29	110.73
4	A	1001	GLC	O3-C3-C4	-2.71	104.23	110.34
4	A	1002	GLC	C4-C3-C2	-2.69	105.77	110.79

All (2) chirality outliers are listed below:

Mol	Chain	Res	Type	Atom
4	A	1002	GLC	C1
3	A	901	ACR	C1D

There are no torsion outliers.

There are no ring outliers.

2 monomers are involved in 4 short contacts:

Mol	Chain	Res	Type	Clashes	Symm-Clashes
4	A	1001	GLC	3	0
4	A	1002	GLC	1	0

5.7 Other polymers [i](#)

There are no such residues in this entry.

5.8 Polymer linkage issues [i](#)

There are no chain breaks in this entry.

6 Fit of model and data [i](#)

6.1 Protein, DNA and RNA chains [i](#)

In the following table, the column labelled ‘#RSRZ> 2’ contains the number (and percentage) of RSRZ outliers, followed by percent RSRZ outliers for the chain as percentile scores relative to all X-ray entries and entries of similar resolution. The OWAB column contains the minimum, median, 95th percentile and maximum values of the occupancy-weighted average B-factor per residue. The column labelled ‘Q< 0.9’ lists the number of (and percentage) of residues with an average occupancy less than 0.9.

Mol	Chain	Analysed	<RSRZ>	#RSRZ>2	OWAB(Å ²)	Q<0.9
1	A	585/599 (97%)	0.09	29 (4%) 32 32	10, 17, 28, 39	0

The worst 5 of 29 RSRZ outliers are listed below:

Mol	Chain	Res	Type	RSRZ
1	A	454	SER	4.8
1	A	96	TYR	4.4
1	A	453	GLY	4.3
1	A	97	ASP	4.2
1	A	452	GLU	4.1

6.2 Non-standard residues in protein, DNA, RNA chains [i](#)

There are no non-standard protein/DNA/RNA residues in this entry.

6.3 Carbohydrates [i](#)

In the following table, the Atoms column lists the number of modelled atoms in the group and the number defined in the chemical component dictionary. LLDF column lists the quality of electron density of the group with respect to its neighbouring residues in protein, DNA or RNA chains. The B-factors column lists the minimum, median, 95th percentile and maximum values of B factors of atoms in the group. The column labelled ‘Q< 0.9’ lists the number of atoms with occupancy less than 0.9.

Mol	Type	Chain	Res	Atoms	RSCC	RSR	LLDF	B-factors(Å ²)	Q<0.9
2	ACI	A	803	12/12	0.90	0.18	6.45	20,22,29,38	0
2	BGC	A	809	12/12	0.88	0.26	4.59	26,38,43,47	0
2	GLC	A	802	11/12	0.91	0.17	3.87	25,26,30,35	0
2	ACI	A	806	12/12	0.93	0.09	0.25	14,18,24,30	0
2	GLC	A	805	11/12	0.97	0.06	-0.29	15,17,21,24	0

Continued on next page...

Continued from previous page...

Mol	Type	Chain	Res	Atoms	RSCC	RSR	LLDF	B-factors(\AA^2)	Q<0.9
2	GLD	A	807	9/10	0.98	0.05	-1.02	13,14,17,19	0
2	G6D	A	801	10/11	0.89	0.28	-	26,35,41,41	0
2	GLD	A	804	9/10	0.95	0.08	-	21,22,28,28	0
2	GLC	A	808	11/12	0.96	0.09	-	17,20,24,29	0

6.4 Ligands [i](#)

In the following table, the Atoms column lists the number of modelled atoms in the group and the number defined in the chemical component dictionary. LLDF column lists the quality of electron density of the group with respect to its neighbouring residues in protein, DNA or RNA chains. The B-factors column lists the minimum, median, 95th percentile and maximum values of B factors of atoms in the group. The column labelled 'Q< 0.9' lists the number of atoms with occupancy less than 0.9.

Mol	Type	Chain	Res	Atoms	RSCC	RSR	LLDF	B-factors(\AA^2)	Q<0.9
4	GLC	A	1001	12/12	0.85	0.30	12.94	26,40,42,46	0
5	CA	A	705	1/1	1.00	0.17	3.23	30,30,30,30	0
3	ACR	A	901	44/44	0.92	0.12	1.16	14,23,48,52	0
5	CA	A	702	1/1	1.00	0.07	-0.51	10,10,10,10	0
5	CA	A	703	1/1	1.00	0.04	-0.99	14,14,14,14	0
5	CA	A	701	1/1	1.00	0.03	-1.68	11,11,11,11	0
6	NA	A	704	1/1	1.00	0.03	-1.73	10,10,10,10	0
4	GLC	A	1002	12/12	0.64	0.24	-	72,74,74,75	0

6.5 Other polymers [i](#)

There are no such residues in this entry.