



# Full wwPDB X-ray Structure Validation Report ⓘ

Feb 1, 2016 – 07:35 AM GMT

PDB ID : 3BE9  
Title : Structure-based design and synthesis of novel macrocyclic pyrazolo[1,5-a][1,3,5]triazine compounds as potent inhibitors of protein kinase CK2 and their anticancer activities  
Authors : Nie, Z.; Perretta, C.; Erickson, P.; Margosiak, S.; Lu, J.; Averill, A.; Almassy, R.; Chu, S.  
Deposited on : 2007-11-16  
Resolution : 2.00 Å(reported)

This is a Full wwPDB X-ray Structure Validation Report for a publicly released PDB entry.  
We welcome your comments at [validation@mail.wwpdb.org](mailto:validation@mail.wwpdb.org)  
A user guide is available at  
<http://wwpdb.org/validation/2016/XrayValidationReportHelp>  
with specific help available everywhere you see the ⓘ symbol.

---

The following versions of software and data (see [references ⓘ](#)) were used in the production of this report:

MolProbity : 4.02b-467  
Mogul : 1.7 (RC4), CSD as536be (2015)  
Xtriage (Phenix) : **NOT EXECUTED**  
EDS : **NOT EXECUTED**  
Percentile statistics : 20151230.v01 (using entries in the PDB archive December 30th 2015)  
Ideal geometry (proteins) : Engh & Huber (2001)  
Ideal geometry (DNA, RNA) : Parkinson et al. (1996)  
Validation Pipeline (wwPDB-VP) : trunk26865

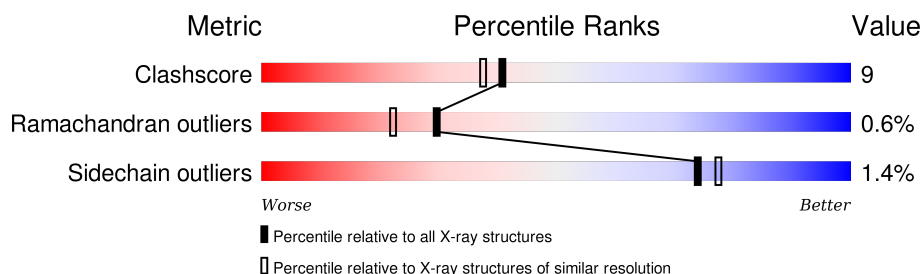
# 1 Overall quality at a glance

The following experimental techniques were used to determine the structure:

*X-RAY DIFFRACTION*

The reported resolution of this entry is 2.00 Å.

Percentile scores (ranging between 0-100) for global validation metrics of the entry are shown in the following graphic. The table shows the number of entries on which the scores are based.



Metric	Whole archive (#Entries)	Similar resolution (#Entries, resolution range(Å))
Clashscore	102246	7340 (2.00-2.00)
Ramachandran outliers	100387	7248 (2.00-2.00)
Sidechain outliers	100360	7247 (2.00-2.00)

The table below summarises the geometric issues observed across the polymeric chains and their fit to the electron density. The red, orange, yellow and green segments on the lower bar indicate the fraction of residues that contain outliers for  $\geq 3$ , 2, 1 and 0 types of geometric quality criteria. A grey segment represents the fraction of residues that are not modelled. The numeric value for each fraction is indicated below the corresponding segment, with a dot representing fractions  $\leq 5\%$ . The upper red bar (where present) indicates the fraction of residues that have poor fit to the electron density. The numeric value is given above the bar.

Note EDS was not executed.

Mol	Chain	Length	Quality of chain
1	A	352	

## 2 Entry composition

There are 3 unique types of molecules in this entry. The entry contains 3007 atoms, of which 0 are hydrogens and 0 are deuteriums.

In the tables below, the ZeroOcc column contains the number of atoms modelled with zero occupancy, the AltConf column contains the number of residues with at least one atom in alternate conformation and the Trace column contains the number of residues modelled with at most 2 atoms.

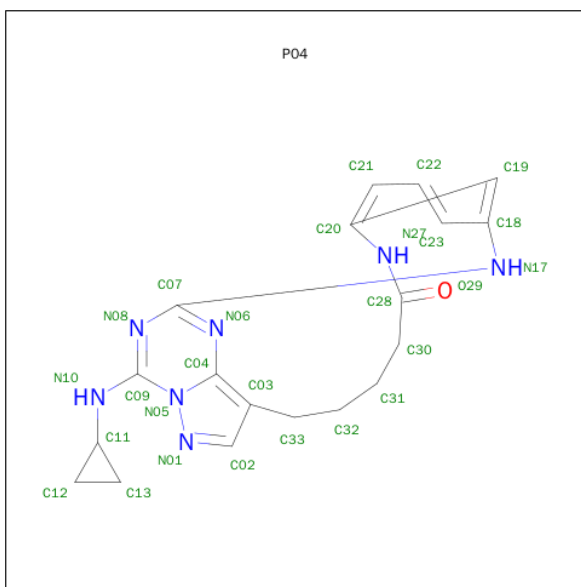
- Molecule 1 is a protein called Casein kinase II subunit alpha.

Mol	Chain	Residues	Atoms					ZeroOcc	AltConf	Trace
1	A	328	Total	C	N	O	S	0	0	0
			2734	1760	471	491	12			

There are 21 discrepancies between the modelled and reference sequences:

Chain	Residue	Modelled	Actual	Comment	Reference
A	-14	MET	-	EXPRESSION TAG	UNP P28523
A	-13	GLY	-	EXPRESSION TAG	UNP P28523
A	-12	SER	-	EXPRESSION TAG	UNP P28523
A	-11	SER	-	EXPRESSION TAG	UNP P28523
A	-10	HIS	-	EXPRESSION TAG	UNP P28523
A	-9	HIS	-	EXPRESSION TAG	UNP P28523
A	-8	HIS	-	EXPRESSION TAG	UNP P28523
A	-7	HIS	-	EXPRESSION TAG	UNP P28523
A	-6	HIS	-	EXPRESSION TAG	UNP P28523
A	-5	HIS	-	EXPRESSION TAG	UNP P28523
A	-4	SER	-	EXPRESSION TAG	UNP P28523
A	-3	SER	-	EXPRESSION TAG	UNP P28523
A	-2	GLY	-	EXPRESSION TAG	UNP P28523
A	-1	LEU	-	EXPRESSION TAG	UNP P28523
A	0	VAL	-	EXPRESSION TAG	UNP P28523
A	1	PRO	-	EXPRESSION TAG	UNP P28523
A	2	ARG	-	EXPRESSION TAG	UNP P28523
A	3	GLY	-	EXPRESSION TAG	UNP P28523
A	4	SER	-	EXPRESSION TAG	UNP P28523
A	5	HIS	-	EXPRESSION TAG	UNP P28523
A	256	ALA	VAL	ENGINEERED	UNP P28523

- Molecule 2 is 19-(CYCLOPROPYLAMINO)-4,6,7,15-TETRAHYDRO-5H-16,1-(AZENOMETHENO)-10,14-(METHENO)PYRAZOLO[4,3-O][1,3,9]TRIAZACYCLOHEXADECIN-8(9H)-ONE (three-letter code: P04) (formula: C<sub>19</sub>H<sub>21</sub>N<sub>7</sub>O).



Mol	Chain	Residues	Atoms				ZeroOcc	AltConf
2	A	1	Total	C	N	O	0	0
			27	19	7	1		

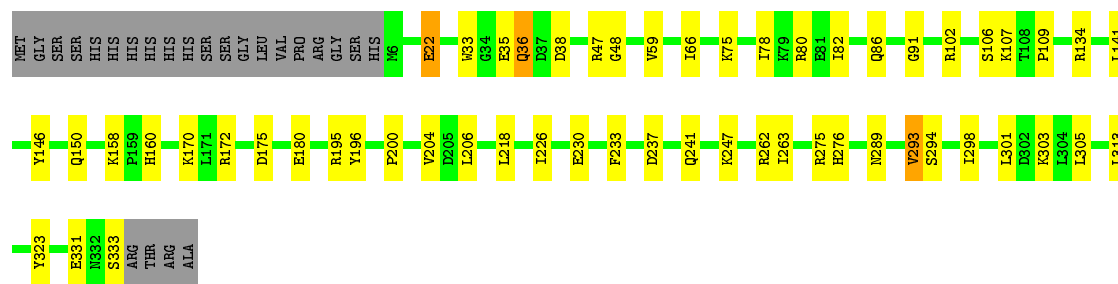
- Molecule 3 is water.

Mol	Chain	Residues	Atoms		ZeroOcc	AltConf
3	A	246	Total	O	0	0
			246	246		



Note EDS was not executed.

- Molecule 1: Casein kinase II subunit alpha



## 4 Data and refinement statistics

Xtriage (Phenix) and EDS were not executed - this section will therefore be incomplete.

Property	Value	Source
Space group	C 1 2 1	Depositor
Cell constants a, b, c, $\alpha$ , $\beta$ , $\gamma$	143.33Å 59.58Å 44.84Å 90.00° 103.42° 90.00°	Depositor
Resolution (Å)	32.70 – 2.00	Depositor
% Data completeness (in resolution range)	91.6 (32.70-2.00)	Depositor
$R_{merge}$	0.08	Depositor
$R_{sym}$	(Not available)	Depositor
Refinement program	CNX	Depositor
R, $R_{free}$	0.190 , 0.228	Depositor
Estimated twinning fraction	No twinning to report.	Xtriage
Total number of atoms	3007	wwPDB-VP
Average B, all atoms (Å <sup>2</sup> )	26.0	wwPDB-VP

## 5 Model quality

### 5.1 Standard geometry

Bond lengths and bond angles in the following residue types are not validated in this section: CSO, P04

The Z score for a bond length (or angle) is the number of standard deviations the observed value is removed from the expected value. A bond length (or angle) with  $|Z| > 5$  is considered an outlier worth inspection. RMSZ is the root-mean-square of all Z scores of the bond lengths (or angles).

Mol	Chain	Bond lengths		Bond angles	
		RMSZ	$\# Z  > 5$	RMSZ	$\# Z  > 5$
1	A	0.31	0/2794	0.56	0/3774

There are no bond length outliers.

There are no bond angle outliers.

There are no chirality outliers.

There are no planarity outliers.

### 5.2 Too-close contacts

In the following table, the Non-H and H(model) columns list the number of non-hydrogen atoms and hydrogen atoms in the chain respectively. The H(added) column lists the number of hydrogen atoms added and optimized by MolProbity. The Clashes column lists the number of clashes within the asymmetric unit, whereas Symm-Clashes lists symmetry related clashes.

Mol	Chain	Non-H	H(model)	H(added)	Clashes	Symm-Clashes
1	A	2734	0	2717	44	0
2	A	27	0	21	4	0
3	A	246	0	0	6	0
All	All	3007	0	2738	47	0

The all-atom clashscore is defined as the number of clashes found per 1000 atoms (including hydrogen atoms). The all-atom clashscore for this structure is 9.

All (47) close contacts within the same asymmetric unit are listed below, sorted by their clash magnitude.

Atom-1	Atom-2	Interatomic distance (Å)	Clash overlap (Å)
1:A:35:GLU:HB3	1:A:38:ASP:OD2	1.80	0.81

*Continued on next page...*

*Continued from previous page...*

Atom-1	Atom-2	Interatomic distance (Å)	Clash overlap (Å)
2:A:501:P04:H31	2:A:501:P04:H19	1.75	0.67
1:A:66:ILE:HG21	2:A:501:P04:H32A	1.76	0.67
1:A:102:ARG:NH2	1:A:107:LYS:HD2	2.13	0.63
1:A:48:GLY:HA3	3:A:624:HOH:O	1.99	0.62
1:A:160:HIS:CD2	1:A:160:HIS:H	2.17	0.62
1:A:47:ARG:HD2	1:A:47:ARG:O	2.01	0.60
1:A:134:ARG:HG2	1:A:323:TYR:CZ	2.39	0.58
2:A:501:P04:N06	2:A:501:P04:H19	2.20	0.56
1:A:294:SER:HB2	3:A:627:HOH:O	2.04	0.56
1:A:33:TRP:CD2	1:A:102:ARG:HD2	2.42	0.55
1:A:293:VAL:HG13	1:A:298:ILE:HD11	1.88	0.55
1:A:47:ARG:HD2	1:A:47:ARG:C	2.27	0.54
1:A:75:LYS:O	1:A:78:ILE:HG22	2.08	0.53
1:A:293:VAL:HG12	1:A:293:VAL:O	2.08	0.52
1:A:22:GLU:CD	1:A:22:GLU:H	2.13	0.52
1:A:91:GLY:HA3	1:A:146:TYR:CE2	2.46	0.51
1:A:170:LYS:HD2	1:A:172:ARG:NH2	2.27	0.50
1:A:36:GLN:HB3	3:A:584:HOH:O	2.12	0.49
1:A:233:PHE:HB3	1:A:241:GLN:HE22	1.78	0.48
1:A:141:LEU:HD21	1:A:218:LEU:HD21	1.96	0.47
1:A:293:VAL:CG1	1:A:298:ILE:HD11	2.44	0.47
1:A:106:SER:O	1:A:107:LYS:HB2	2.14	0.47
1:A:158:LYS:HE3	1:A:160:HIS:HB2	1.97	0.46
1:A:275:ARG:HD3	1:A:276:HIS:N	2.31	0.46
1:A:146:TYR:O	1:A:150:GLN:HG2	2.16	0.45
1:A:241:GLN:HG2	3:A:733:HOH:O	2.17	0.45
1:A:301:LEU:HD11	1:A:305:LEU:CD1	2.49	0.43
1:A:206:LEU:HD12	1:A:263:ILE:HD11	2.00	0.43
1:A:247:LYS:CB	1:A:247:LYS:NZ	2.82	0.43
1:A:82:ILE:O	1:A:86:GLN:HG3	2.17	0.43
1:A:80:ARG:HD3	3:A:729:HOH:O	2.19	0.42
1:A:38:ASP:O	1:A:59:VAL:HG22	2.20	0.42
2:A:501:P04:C31	2:A:501:P04:H19	2.47	0.42
1:A:200:PRO:O	1:A:204:VAL:HG22	2.19	0.42
1:A:262:ARG:HA	1:A:262:ARG:NE	2.34	0.42
1:A:233:PHE:CB	1:A:241:GLN:HE22	2.32	0.42
1:A:107:LYS:O	1:A:109:PRO:HD3	2.19	0.42
1:A:303:LYS:HB3	1:A:313:LEU:HG	2.01	0.42
1:A:331:GLU:C	1:A:333:SER:H	2.23	0.41
1:A:141:LEU:HD21	1:A:218:LEU:CD2	2.50	0.41
1:A:226:ILE:O	1:A:289:ASN:HB2	2.21	0.41

*Continued on next page...*



*Continued from previous page...*

Atom-1	Atom-2	Interatomic distance (Å)	Clash overlap (Å)
1:A:38:ASP:HA	1:A:59:VAL:HG22	2.03	0.41
1:A:275:ARG:C	1:A:275:ARG:HD3	2.42	0.40
1:A:237:ASP:HB2	3:A:626:HOH:O	2.20	0.40
1:A:33:TRP:CE2	1:A:102:ARG:HD2	2.57	0.40
1:A:195:ARG:O	1:A:196:TYR:CB	2.69	0.40

There are no symmetry-related clashes.

## 5.3 Torsion angles [i](#)

### 5.3.1 Protein backbone [i](#)

In the following table, the Percentiles column shows the percent Ramachandran outliers of the chain as a percentile score with respect to all X-ray entries followed by that with respect to entries of similar resolution.

The Analysed column shows the number of residues for which the backbone conformation was analysed, and the total number of residues.

Mol	Chain	Analysed	Favoured	Allowed	Outliers	Percentiles
1	A	325/352 (92%)	309 (95%)	14 (4%)	2 (1%)	30 22

All (2) Ramachandran outliers are listed below:

Mol	Chain	Res	Type
1	A	175	ASP
1	A	293	VAL

### 5.3.2 Protein sidechains [i](#)

In the following table, the Percentiles column shows the percent sidechain outliers of the chain as a percentile score with respect to all X-ray entries followed by that with respect to entries of similar resolution.

The Analysed column shows the number of residues for which the sidechain conformation was analysed, and the total number of residues.

Mol	Chain	Analysed	Rotameric	Outliers	Percentiles
1	A	295/315 (94%)	291 (99%)	4 (1%)	74 77

All (4) residues with a non-rotameric sidechain are listed below:

Mol	Chain	Res	Type
1	A	22	GLU
1	A	36	GLN
1	A	180	GLU
1	A	230	GLU

Some sidechains can be flipped to improve hydrogen bonding and reduce clashes. All (6) such sidechains are listed below:

Mol	Chain	Res	Type
1	A	160	HIS
1	A	241	GLN
1	A	255	ASN
1	A	268	GLN
1	A	310	GLN
1	A	326	GLN

### 5.3.3 RNA ⓘ

There are no RNA molecules in this entry.

## 5.4 Non-standard residues in protein, DNA, RNA chains ⓘ

1 non-standard protein/DNA/RNA residue is modelled in this entry.

In the following table, the Counts columns list the number of bonds (or angles) for which Mogul statistics could be retrieved, the number of bonds (or angles) that are observed in the model and the number of bonds (or angles) that are defined in the chemical component dictionary. The Link column lists molecule types, if any, to which the group is linked. The Z score for a bond length (or angle) is the number of standard deviations the observed value is removed from the expected value. A bond length (or angle) with  $|Z| > 2$  is considered an outlier worth inspection. RMSZ is the root-mean-square of all Z scores of the bond lengths (or angles).

Mol	Type	Chain	Res	Link	Bond lengths			Bond angles		
					Counts	RMSZ	$\# Z  > 2$	Counts	RMSZ	$\# Z  > 2$
1	CSO	A	89	1	3,6,7	0.46	0	1,6,8	1.82	0

In the following table, the Chirals column lists the number of chiral outliers, the number of chiral centers analysed, the number of these observed in the model and the number defined in the chemical component dictionary. Similar counts are reported in the Torsion and Rings columns. '-' means no outliers of that kind were identified.

Mol	Type	Chain	Res	Link	Chirals	Torsions	Rings
1	CSO	A	89	1	-	0/1/5/7	0/0/0/0

There are no bond length outliers.

There are no bond angle outliers.

There are no chirality outliers.

There are no torsion outliers.

There are no ring outliers.

No monomer is involved in short contacts.

## 5.5 Carbohydrates [i](#)

There are no carbohydrates in this entry.

## 5.6 Ligand geometry [i](#)

1 ligand is modelled in this entry.

In the following table, the Counts columns list the number of bonds (or angles) for which Mogul statistics could be retrieved, the number of bonds (or angles) that are observed in the model and the number of bonds (or angles) that are defined in the chemical component dictionary. The Link column lists molecule types, if any, to which the group is linked. The Z score for a bond length (or angle) is the number of standard deviations the observed value is removed from the expected value. A bond length (or angle) with  $|Z| > 2$  is considered an outlier worth inspection. RMSZ is the root-mean-square of all Z scores of the bond lengths (or angles).

Mol	Type	Chain	Res	Link	Bond lengths			Bond angles		
					Counts	RMSZ	# Z  > 2	Counts	RMSZ	# Z  > 2
2	P04	A	501	-	27,31,31	1.04	3 (11%)	29,44,44	1.66	8 (27%)

In the following table, the Chirals column lists the number of chiral outliers, the number of chiral centers analysed, the number of these observed in the model and the number defined in the chemical component dictionary. Similar counts are reported in the Torsion and Rings columns. '-' means no outliers of that kind were identified.

Mol	Type	Chain	Res	Link	Chirals	Torsions	Rings
2	P04	A	501	-	-	0/19/21/21	0/1/5/5

All (3) bond length outliers are listed below:

Mol	Chain	Res	Type	Atoms	Z	Observed(Å)	Ideal(Å)
2	A	501	P04	C20-N27	-2.72	1.36	1.41
2	A	501	P04	C13-C11	2.14	1.53	1.48
2	A	501	P04	C12-C11	2.15	1.53	1.48

All (8) bond angle outliers are listed below:

Mol	Chain	Res	Type	Atoms	Z	Observed(°)	Ideal(°)
2	A	501	P04	O29-C28-C30	-2.88	117.02	121.98
2	A	501	P04	C33-C03-C02	-2.21	124.15	127.88
2	A	501	P04	C09-N08-C07	2.01	118.16	115.22
2	A	501	P04	C20-C19-C18	2.05	122.61	119.49
2	A	501	P04	C07-N06-C04	2.31	117.88	115.09
2	A	501	P04	C20-N27-C28	2.49	132.18	127.47
2	A	501	P04	C02-N01-N05	2.56	108.11	104.03
2	A	501	P04	C30-C28-N27	3.74	120.84	114.52

There are no chirality outliers.

There are no torsion outliers.

There are no ring outliers.

1 monomer is involved in 4 short contacts:

Mol	Chain	Res	Type	Clashes	Symm-Clashes
2	A	501	P04	4	0

## 5.7 Other polymers [i](#)

There are no such residues in this entry.

## 5.8 Polymer linkage issues [i](#)

There are no chain breaks in this entry.

## 6 Fit of model and data [i](#)

### 6.1 Protein, DNA and RNA chains [i](#)

EDS was not executed - this section will therefore be empty.

### 6.2 Non-standard residues in protein, DNA, RNA chains [i](#)

EDS was not executed - this section will therefore be empty.

### 6.3 Carbohydrates [i](#)

EDS was not executed - this section will therefore be empty.

### 6.4 Ligands [i](#)

EDS was not executed - this section will therefore be empty.

### 6.5 Other polymers [i](#)

EDS was not executed - this section will therefore be empty.