



# Full wwPDB X-ray Structure Validation Report ⓘ

Feb 1, 2016 – 07:35 AM GMT

PDB ID : 3BEA  
Title : cFMS tyrosine kinase (tie2 KID) in complex with a pyrimidinopyridone inhibitor  
Authors : Schubert, C.  
Deposited on : 2007-11-16  
Resolution : 2.02 Å(reported)

This is a Full wwPDB X-ray Structure Validation Report for a publicly released PDB entry.  
We welcome your comments at [validation@mail.wwpdb.org](mailto:validation@mail.wwpdb.org)  
A user guide is available at  
<http://wwpdb.org/validation/2016/XrayValidationReportHelp>  
with specific help available everywhere you see the ⓘ symbol.

---

The following versions of software and data (see [references ⓘ](#)) were used in the production of this report:

MolProbity : 4.02b-467  
Mogul : 1.7 (RC4), CSD as536be (2015)  
Xtriage (Phenix) : 1.9-1692  
EDS : rb-20026688  
Percentile statistics : 20151230.v01 (using entries in the PDB archive December 30th 2015)  
Refmac : 5.8.0135  
CCP4 : 6.5.0  
Ideal geometry (proteins) : Engh & Huber (2001)  
Ideal geometry (DNA, RNA) : Parkinson et al. (1996)  
Validation Pipeline (wwPDB-VP) : trunk26865

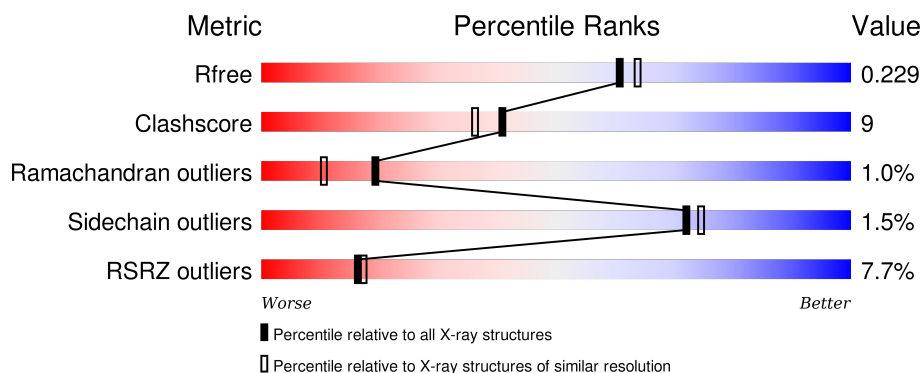
# 1 Overall quality at a glance

The following experimental techniques were used to determine the structure:

## *X-RAY DIFFRACTION*

The reported resolution of this entry is 2.02 Å.

Percentile scores (ranging between 0-100) for global validation metrics of the entry are shown in the following graphic. The table shows the number of entries on which the scores are based.



Metric	Whole archive (#Entries)	Similar resolution (#Entries, resolution range(Å))
$R_{free}$	91344	7858 (2.04-2.00)
Clashscore	102246	9060 (2.04-2.00)
Ramachandran outliers	100387	8952 (2.04-2.00)
Sidechain outliers	100360	8951 (2.04-2.00)
RSRZ outliers	91569	7873 (2.04-2.00)

The table below summarises the geometric issues observed across the polymeric chains and their fit to the electron density. The red, orange, yellow and green segments on the lower bar indicate the fraction of residues that contain outliers for  $\geq 3$ , 2, 1 and 0 types of geometric quality criteria. A grey segment represents the fraction of residues that are not modelled. The numeric value for each fraction is indicated below the corresponding segment, with a dot representing fractions  $\leq 5\%$ . The upper red bar (where present) indicates the fraction of residues that have poor fit to the electron density. The numeric value is given above the bar.

Mol	Chain	Length	Quality of chain
1	A	333	<div> <div>7%</div> <div> <div></div> <div>79%</div> <div>13%</div> <div>• 7%</div> </div> </div>

## 2 Entry composition [i](#)

There are 4 unique types of molecules in this entry. The entry contains 2683 atoms, of which 0 are hydrogens and 0 are deuteriums.

In the tables below, the ZeroOcc column contains the number of atoms modelled with zero occupancy, the AltConf column contains the number of residues with at least one atom in alternate conformation and the Trace column contains the number of residues modelled with at most 2 atoms.

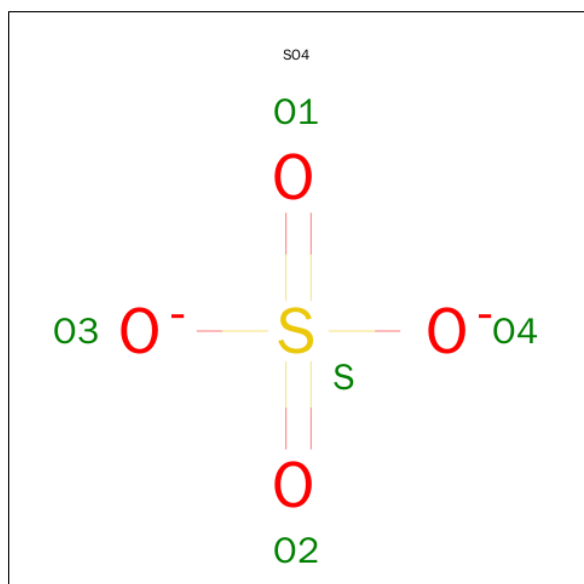
- Molecule 1 is a protein called Macrophage colony-stimulating factor 1 receptor.

Mol	Chain	Residues	Atoms					ZeroOcc	AltConf	Trace
1	A	310	Total	C	N	O	S	0	0	0
			2461	1577	424	445	15			

There are 4 discrepancies between the modelled and reference sequences:

Chain	Residue	Modelled	Actual	Comment	Reference
A	535	GLY	-	EXPRESSION TAG	UNP P07333
A	536	VAL	-	EXPRESSION TAG	UNP P07333
A	537	ASP	-	EXPRESSION TAG	UNP P07333
A	695	LEU	ALA	ENGINEERED	UNP Q02763

- Molecule 2 is SULFATE ION (three-letter code: SO4) (formula: O<sub>4</sub>S).



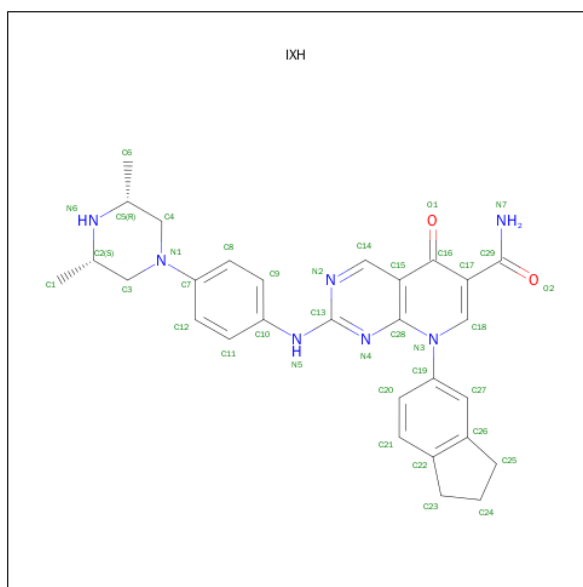
Mol	Chain	Residues	Atoms			ZeroOcc	AltConf
2	A	1	Total	O	S	0	0
			5	4	1		

*Continued on next page...*

Continued from previous page...

Mol	Chain	Residues	Atoms			ZeroOcc	AltConf
2	A	1	Total	O	S	0	0
			5	4	1		
2	A	1	Total	O	S	0	0
			5	4	1		

- Molecule 3 is 8-(2,3-DIHYDRO-1H-INDEN-5-YL)-2-({4-[(3R,5S)-3,5-DIMETHYLPIPERAZIN-1-YL]PHENYL}AMINO)-5-OXO-5,8-DIHYDROPYRIDO[2,3-D]PYRIMIDINE-6-CARBOXAMIDE (three-letter code: IXH) (formula: C<sub>29</sub>H<sub>31</sub>N<sub>7</sub>O<sub>2</sub>).



Mol	Chain	Residues	Atoms				ZeroOcc	AltConf
3	A	1	Total	C	N	O	0	0
			38	29	7	2		

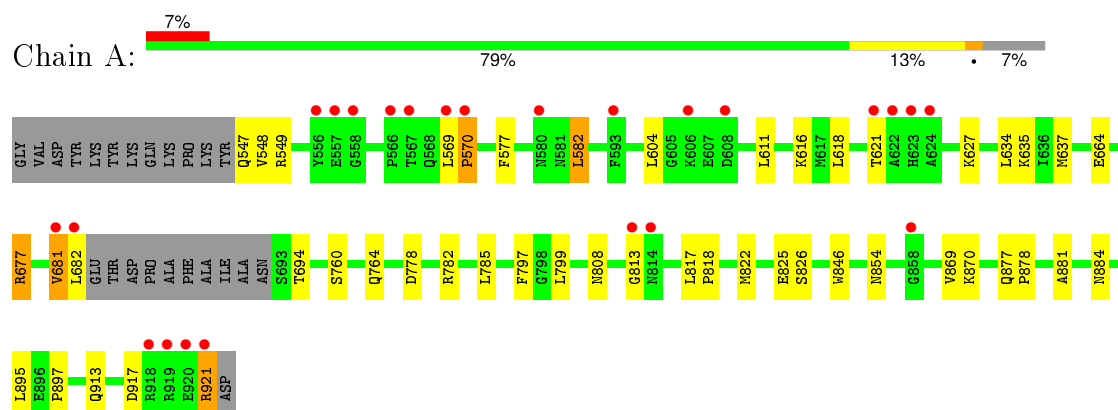
- Molecule 4 is water.

Mol	Chain	Residues	Atoms		ZeroOcc	AltConf
4	A	169	Total	O	0	0
			169	169		

### 3 Residue-property plots [i](#)

These plots are drawn for all protein, RNA and DNA chains in the entry. The first graphic for a chain summarises the proportions of errors displayed in the second graphic. The second graphic shows the sequence view annotated by issues in geometry and electron density. Residues are color-coded according to the number of geometric quality criteria for which they contain at least one outlier: green = 0, yellow = 1, orange = 2 and red = 3 or more. A red dot above a residue indicates a poor fit to the electron density ( $RSRZ > 2$ ). Stretches of 2 or more consecutive residues without any outlier are shown as a green connector. Residues present in the sample, but not in the model, are shown in grey.

- Molecule 1: Macrophage colony-stimulating factor 1 receptor



## 4 Data and refinement statistics

Property	Value	Source
Space group	H 3	Depositor
Cell constants a, b, c, $\alpha$ , $\beta$ , $\gamma$	81.14Å 81.14Å 145.65Å 90.00° 90.00° 120.00°	Depositor
Resolution (Å)	31.13 – 2.02 31.13 – 2.02	Depositor EDS
% Data completeness (in resolution range)	88.2 (31.13-2.02) 88.3 (31.13-2.02)	Depositor EDS
$R_{merge}$	0.06	Depositor
$R_{sym}$	(Not available)	Depositor
$\langle I/\sigma(I) \rangle$ <sup>1</sup>	3.00 (at 2.03Å)	Xtriage
Refinement program	CNX 2005	Depositor
R, $R_{free}$	0.193 , 0.230 0.194 , 0.229	Depositor DCC
$R_{free}$ test set	1514 reflections (7.92%)	DCC
Wilson B-factor (Å <sup>2</sup> )	23.4	Xtriage
Anisotropy	0.399	Xtriage
Bulk solvent $k_{sol}$ (e/Å <sup>3</sup> ), $B_{sol}$ (Å <sup>2</sup> )	0.35 , 53.0	EDS
Estimated twinning fraction	0.031 for h,-h-k,-l	Xtriage
L-test for twinning <sup>2</sup>	$\langle  L  \rangle = 0.49$ , $\langle L^2 \rangle = 0.33$	Xtriage
Outliers	0 of 20630 reflections	Xtriage
$F_o, F_c$ correlation	0.94	EDS
Total number of atoms	2683	wwPDB-VP
Average B, all atoms (Å <sup>2</sup> )	30.0	wwPDB-VP

Xtriage's analysis on translational NCS is as follows: *The largest off-origin peak in the Patterson function is 5.24% of the height of the origin peak. No significant pseudotranslation is detected.*

<sup>1</sup>Intensities estimated from amplitudes.

<sup>2</sup>Theoretical values of  $\langle |L| \rangle$ ,  $\langle L^2 \rangle$  for acentric reflections are 0.5, 0.375 respectively for untwinned datasets, and 0.333, 0.2 for perfectly twinned datasets.

## 5 Model quality [i](#)

### 5.1 Standard geometry [i](#)

Bond lengths and bond angles in the following residue types are not validated in this section: IXH, SO4

The Z score for a bond length (or angle) is the number of standard deviations the observed value is removed from the expected value. A bond length (or angle) with  $|Z| > 5$  is considered an outlier worth inspection. RMSZ is the root-mean-square of all Z scores of the bond lengths (or angles).

Mol	Chain	Bond lengths		Bond angles	
		RMSZ	$\# Z  > 5$	RMSZ	$\# Z  > 5$
1	A	0.27	0/2518	0.45	0/3407

There are no bond length outliers.

There are no bond angle outliers.

There are no chirality outliers.

There are no planarity outliers.

### 5.2 Too-close contacts [i](#)

In the following table, the Non-H and H(model) columns list the number of non-hydrogen atoms and hydrogen atoms in the chain respectively. The H(added) column lists the number of hydrogen atoms added and optimized by MolProbity. The Clashes column lists the number of clashes within the asymmetric unit, whereas Symm-Clashes lists symmetry related clashes.

Mol	Chain	Non-H	H(model)	H(added)	Clashes	Symm-Clashes
1	A	2461	0	2449	43	0
2	A	15	0	0	0	0
3	A	38	0	31	1	0
4	A	169	0	0	4	0
All	All	2683	0	2480	43	0

The all-atom clashscore is defined as the number of clashes found per 1000 atoms (including hydrogen atoms). The all-atom clashscore for this structure is 9.

All (43) close contacts within the same asymmetric unit are listed below, sorted by their clash magnitude.

Atom-1	Atom-2	Interatomic distance (Å)	Clash overlap (Å)
1:A:616:LYS:HD3	1:A:799:LEU:HD12	1.51	0.91
1:A:681:VAL:HG23	1:A:682:LEU:H	1.36	0.88
1:A:570:PRO:HA	1:A:635:LYS:HE2	1.60	0.83
1:A:547:GLN:HE21	1:A:548:VAL:H	1.26	0.80
1:A:760:SER:O	1:A:764:GLN:HG2	1.83	0.79
1:A:547:GLN:NE2	1:A:548:VAL:H	1.88	0.72
1:A:548:VAL:O	1:A:548:VAL:HG12	1.95	0.67
1:A:548:VAL:HG13	1:A:778:ASP:HB2	1.81	0.62
1:A:681:VAL:HG23	1:A:682:LEU:N	2.11	0.61
1:A:884:ASN:HD22	1:A:913:GLN:HE22	1.52	0.57
1:A:570:PRO:CA	1:A:635:LYS:HE2	2.36	0.53
1:A:782:ARG:NH2	1:A:818:PRO:HB3	2.25	0.52
1:A:785:LEU:HD13	1:A:797:PHE:CE2	2.45	0.52
1:A:577:PHE:HE2	1:A:582:LEU:HD13	1.75	0.51
1:A:604:LEU:C	1:A:604:LEU:HD23	2.30	0.51
1:A:808:ASN:HD21	1:A:854:ASN:HD21	1.58	0.50
1:A:785:LEU:HD22	1:A:797:PHE:CZ	2.47	0.50
1:A:548:VAL:O	1:A:548:VAL:CG1	2.60	0.49
1:A:681:VAL:HG21	4:A:1014:HOH:O	2.12	0.49
1:A:694:THR:HG23	4:A:1010:HOH:O	2.12	0.49
1:A:611:LEU:H	1:A:611:LEU:HD23	1.78	0.48
1:A:869:VAL:HG23	1:A:870:LYS:N	2.28	0.48
1:A:917:ASP:O	1:A:921:ARG:HB3	2.15	0.47
1:A:569:LEU:N	1:A:569:LEU:HD12	2.31	0.45
1:A:846:TRP:CD1	1:A:878:PRO:HG3	2.51	0.45
1:A:760:SER:O	1:A:764:GLN:CG	2.61	0.45
1:A:877:GLN:HA	1:A:878:PRO:HD3	1.85	0.45
1:A:611:LEU:N	1:A:611:LEU:HD23	2.31	0.45
1:A:577:PHE:CE2	1:A:582:LEU:HD13	2.52	0.45
1:A:677:ARG:HD3	1:A:677:ARG:HA	1.45	0.44
1:A:547:GLN:HG3	1:A:549:ARG:HG2	1.99	0.44
1:A:895:LEU:O	1:A:897:PRO:HD3	2.18	0.44
1:A:570:PRO:HB3	4:A:1040:HOH:O	2.17	0.43
1:A:878:PRO:HD2	1:A:881:ALA:HB3	2.00	0.43
1:A:664:GLU:O	3:A:923:IXH:H14	2.18	0.43
1:A:621:THR:O	1:A:621:THR:HG22	2.18	0.43
1:A:818:PRO:O	1:A:822:MET:HG3	2.18	0.43
1:A:681:VAL:CG2	1:A:682:LEU:H	2.10	0.42
1:A:817:LEU:HA	1:A:818:PRO:HD3	1.92	0.41
1:A:618:LEU:HD11	1:A:627:LYS:HA	2.02	0.41
1:A:616:LYS:HE3	1:A:616:LYS:HB2	1.79	0.41
1:A:637:MET:HE3	4:A:1032:HOH:O	2.20	0.41

Continued on next page...



*Continued from previous page...*

Atom-1	Atom-2	Interatomic distance (Å)	Clash overlap (Å)
1:A:825:GLU:HG2	1:A:826:SER:N	2.35	0.41

There are no symmetry-related clashes.

## 5.3 Torsion angles [i](#)

### 5.3.1 Protein backbone [i](#)

In the following table, the Percentiles column shows the percent Ramachandran outliers of the chain as a percentile score with respect to all X-ray entries followed by that with respect to entries of similar resolution.

The Analysed column shows the number of residues for which the backbone conformation was analysed, and the total number of residues.

Mol	Chain	Analysed	Favoured	Allowed	Outliers	Percentiles
1	A	306/333 (92%)	294 (96%)	9 (3%)	3 (1%)	19 10

All (3) Ramachandran outliers are listed below:

Mol	Chain	Res	Type
1	A	681	VAL
1	A	570	PRO
1	A	813	GLY

### 5.3.2 Protein sidechains [i](#)

In the following table, the Percentiles column shows the percent sidechain outliers of the chain as a percentile score with respect to all X-ray entries followed by that with respect to entries of similar resolution.

The Analysed column shows the number of residues for which the sidechain conformation was analysed, and the total number of residues.

Mol	Chain	Analysed	Rotameric	Outliers	Percentiles
1	A	264/283 (93%)	260 (98%)	4 (2%)	72 74

All (4) residues with a non-rotameric sidechain are listed below:

Mol	Chain	Res	Type
1	A	582	LEU
1	A	634	LEU
1	A	677	ARG
1	A	921	ARG

Some sidechains can be flipped to improve hydrogen bonding and reduce clashes. All (6) such sidechains are listed below:

Mol	Chain	Res	Type
1	A	547	GLN
1	A	580	ASN
1	A	788	ASN
1	A	808	ASN
1	A	911	GLN
1	A	913	GLN

### 5.3.3 RNA [i](#)

There are no RNA molecules in this entry.

## 5.4 Non-standard residues in protein, DNA, RNA chains [i](#)

There are no non-standard protein/DNA/RNA residues in this entry.

## 5.5 Carbohydrates [i](#)

There are no carbohydrates in this entry.

## 5.6 Ligand geometry [i](#)

4 ligands are modelled in this entry.

In the following table, the Counts columns list the number of bonds (or angles) for which Mogul statistics could be retrieved, the number of bonds (or angles) that are observed in the model and the number of bonds (or angles) that are defined in the chemical component dictionary. The Link column lists molecule types, if any, to which the group is linked. The Z score for a bond length (or angle) is the number of standard deviations the observed value is removed from the expected value. A bond length (or angle) with  $|Z| > 2$  is considered an outlier worth inspection. RMSZ is the root-mean-square of all Z scores of the bond lengths (or angles).

Mol	Type	Chain	Res	Link	Bond lengths			Bond angles		
					Counts	RMSZ	# Z  > 2	Counts	RMSZ	# Z  > 2
2	SO4	A	1	-	4,4,4	0.23	0	6,6,6	0.08	0
2	SO4	A	2	-	4,4,4	0.17	0	6,6,6	0.09	0
2	SO4	A	4	-	4,4,4	0.22	0	6,6,6	0.10	0
3	IXH	A	923	-	40,43,43	1.93	12 (30%)	52,63,63	1.64	12 (23%)

In the following table, the Chirals column lists the number of chiral outliers, the number of chiral centers analysed, the number of these observed in the model and the number defined in the chemical component dictionary. Similar counts are reported in the Torsion and Rings columns. '-' means no outliers of that kind were identified.

Mol	Type	Chain	Res	Link	Chirals	Torsions	Rings
2	SO4	A	1	-	-	0/0/0/0	0/0/0/0
2	SO4	A	2	-	-	0/0/0/0	0/0/0/0
2	SO4	A	4	-	-	0/0/0/0	0/0/0/0
3	IXH	A	923	-	-	0/16/34/34	0/6/6/6

All (12) bond length outliers are listed below:

Mol	Chain	Res	Type	Atoms	Z	Observed(Å)	Ideal(Å)
3	A	923	IXH	C29-N7	2.00	1.37	1.33
3	A	923	IXH	C12-C7	2.16	1.43	1.39
3	A	923	IXH	C11-C12	2.16	1.42	1.38
3	A	923	IXH	C9-C10	2.41	1.43	1.39
3	A	923	IXH	C8-C7	2.49	1.44	1.39
3	A	923	IXH	C9-C8	2.58	1.43	1.38
3	A	923	IXH	C20-C21	2.77	1.43	1.38
3	A	923	IXH	C14-N2	2.87	1.37	1.32
3	A	923	IXH	C28-N3	3.11	1.46	1.39
3	A	923	IXH	C20-C19	3.55	1.44	1.38
3	A	923	IXH	C27-C19	4.89	1.45	1.38
3	A	923	IXH	C16-C15	5.40	1.48	1.41

All (12) bond angle outliers are listed below:

Mol	Chain	Res	Type	Atoms	Z	Observed(°)	Ideal(°)
3	A	923	IXH	N2-C13-N4	-4.00	122.19	126.62
3	A	923	IXH	C20-C19-C27	-3.47	118.36	121.50
3	A	923	IXH	C15-C28-N4	-2.61	120.43	123.53
3	A	923	IXH	C17-C16-C15	-2.37	117.84	121.87
3	A	923	IXH	C20-C19-N3	2.09	122.37	119.50
3	A	923	IXH	N5-C13-N2	2.09	122.34	116.01
3	A	923	IXH	O2-C29-C17	2.15	122.93	120.25

*Continued on next page...*

*Continued from previous page...*

Mol	Chain	Res	Type	Atoms	Z	Observed(°)	Ideal(°)
3	A	923	IXH	N4-C28-N3	2.16	120.40	114.73
3	A	923	IXH	C10-N5-C13	2.22	135.07	129.19
3	A	923	IXH	C8-C7-N1	2.40	124.62	121.38
3	A	923	IXH	C16-C15-C28	3.11	121.30	117.89
3	A	923	IXH	C13-N4-C28	4.50	120.51	115.09

There are no chirality outliers.

There are no torsion outliers.

There are no ring outliers.

1 monomer is involved in 1 short contact:

Mol	Chain	Res	Type	Clashes	Symm-Clashes
3	A	923	IXH	1	0

## 5.7 Other polymers [i](#)

There are no such residues in this entry.

## 5.8 Polymer linkage issues [i](#)

There are no chain breaks in this entry.

## 6 Fit of model and data ⓘ

### 6.1 Protein, DNA and RNA chains ⓘ

In the following table, the column labelled ‘#RSRZ> 2’ contains the number (and percentage) of RSRZ outliers, followed by percent RSRZ outliers for the chain as percentile scores relative to all X-ray entries and entries of similar resolution. The OWAB column contains the minimum, median, 95<sup>th</sup> percentile and maximum values of the occupancy-weighted average B-factor per residue. The column labelled ‘Q< 0.9’ lists the number of (and percentage) of residues with an average occupancy less than 0.9.

Mol	Chain	Analysed	<RSRZ>	#RSRZ>2		OWAB(Å <sup>2</sup> )	Q<0.9
1	A	310/333 (93%)	0.23	24 (7%)	16 17	13, 26, 54, 81	0

All (24) RSRZ outliers are listed below:

Mol	Chain	Res	Type	RSRZ
1	A	569	LEU	9.7
1	A	918	ARG	5.2
1	A	681	VAL	4.5
1	A	919	ARG	4.3
1	A	567	THR	4.0
1	A	621	THR	4.0
1	A	557	GLU	3.8
1	A	606	LYS	3.7
1	A	814	ASN	3.7
1	A	920	GLU	3.4
1	A	570	PRO	3.2
1	A	558	GLY	3.1
1	A	921	ARG	3.1
1	A	624	ALA	3.0
1	A	858	GLY	2.9
1	A	623	HIS	2.8
1	A	682	LEU	2.8
1	A	608	ASP	2.8
1	A	566	PRO	2.6
1	A	556	TYR	2.3
1	A	580	ASN	2.2
1	A	813	GLY	2.2
1	A	593	PHE	2.1
1	A	622	ALA	2.1

## 6.2 Non-standard residues in protein, DNA, RNA chains [i](#)

There are no non-standard protein/DNA/RNA residues in this entry.

## 6.3 Carbohydrates [i](#)

There are no carbohydrates in this entry.

## 6.4 Ligands [i](#)

In the following table, the Atoms column lists the number of modelled atoms in the group and the number defined in the chemical component dictionary. LLDF column lists the quality of electron density of the group with respect to its neighbouring residues in protein, DNA or RNA chains. The B-factors column lists the minimum, median, 95<sup>th</sup> percentile and maximum values of B factors of atoms in the group. The column labelled 'Q< 0.9' lists the number of atoms with occupancy less than 0.9.

Mol	Type	Chain	Res	Atoms	RSCC	RSR	LLDF	B-factors( $\text{\AA}^2$ )	Q<0.9
3	IXH	A	923	38/38	0.94	0.13	-0.07	15,20,28,30	0
2	SO4	A	4	5/5	0.97	0.10	-0.56	33,35,38,39	0
2	SO4	A	2	5/5	0.96	0.14	-	57,59,60,60	0
2	SO4	A	1	5/5	0.95	0.12	-	58,59,59,60	0

## 6.5 Other polymers [i](#)

There are no such residues in this entry.