



# Full wwPDB X-ray Structure Validation Report ⓘ

Feb 1, 2016 – 12:46 AM GMT

PDB ID : 2BFD  
Title : REACTIVITY MODULATION OF HUMAN BRANCHED-CHAIN ALPHA-KETOACID DEHYDROGENASE BY AN INTERNAL MOLECULAR SWITCH  
Authors : Machius, M.; Wynn, R.M.; Chuang, J.L.; Tomchick, D.R.; Brautigam, C.A.; Chuang, D.T.  
Deposited on : 2004-12-06  
Resolution : 1.39 Å(reported)

This is a Full wwPDB X-ray Structure Validation Report for a publicly released PDB entry.  
We welcome your comments at [validation@mail.wwpdb.org](mailto:validation@mail.wwpdb.org)  
A user guide is available at  
<http://wwpdb.org/validation/2016/XrayValidationReportHelp>  
with specific help available everywhere you see the ⓘ symbol.

---

The following versions of software and data (see [references ⓘ](#)) were used in the production of this report:

MolProbity : 4.02b-467  
Mogul : 1.7 (RC4), CSD as536be (2015)  
Xtriage (Phenix) : 1.9-1692  
EDS : rb-20026688  
Percentile statistics : 20151230.v01 (using entries in the PDB archive December 30th 2015)  
Refmac : 5.8.0135  
CCP4 : 6.5.0  
Ideal geometry (proteins) : Engh & Huber (2001)  
Ideal geometry (DNA, RNA) : Parkinson et al. (1996)  
Validation Pipeline (wwPDB-VP) : trunk26865

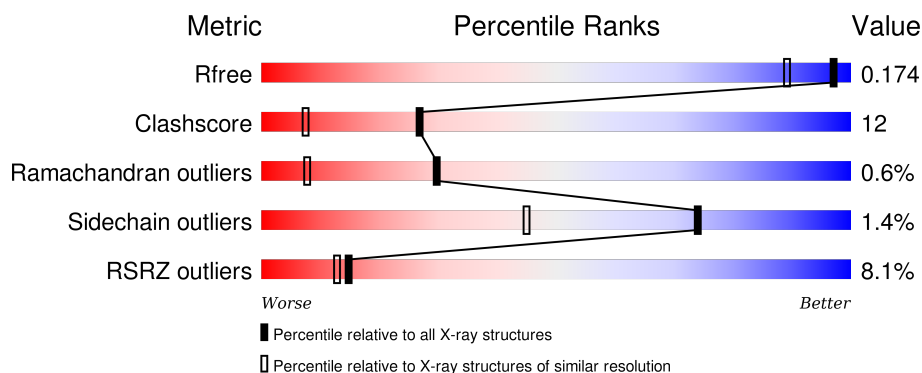
# 1 Overall quality at a glance

The following experimental techniques were used to determine the structure:

## *X-RAY DIFFRACTION*

The reported resolution of this entry is 1.39 Å.

Percentile scores (ranging between 0-100) for global validation metrics of the entry are shown in the following graphic. The table shows the number of entries on which the scores are based.



Metric	Whole archive (#Entries)	Similar resolution (#Entries, resolution range(Å))
$R_{free}$	91344	1199 (1.40-1.40)
Clashscore	102246	1295 (1.40-1.40)
Ramachandran outliers	100387	1259 (1.40-1.40)
Sidechain outliers	100360	1258 (1.40-1.40)
RSRZ outliers	91569	1198 (1.40-1.40)

The table below summarises the geometric issues observed across the polymeric chains and their fit to the electron density. The red, orange, yellow and green segments on the lower bar indicate the fraction of residues that contain outliers for  $\geq 3$ , 2, 1 and 0 types of geometric quality criteria. A grey segment represents the fraction of residues that are not modelled. The numeric value for each fraction is indicated below the corresponding segment, with a dot representing fractions  $\leq 5\%$ . The upper red bar (where present) indicates the fraction of residues that have poor fit to the electron density. The numeric value is given above the bar.

Mol	Chain	Length	Quality of chain
1	A	400	<div> <div>10%</div> <div>74%</div> <div>17%</div> <div>• 7%</div> </div>
2	B	342	<div> <div>5%</div> <div>87%</div> <div>8%</div> <div>• •</div> </div>

The following table lists non-polymeric compounds, carbohydrate monomers and non-standard residues in protein, DNA, RNA chains that are outliers for geometric or electron-density-fit criteria:

Mol	Type	Chain	Res	Chirality	Geometry	Clashes	Electron density
8	MPD	B	901	-	-	-	X

## 2 Entry composition

There are 9 unique types of molecules in this entry. The entry contains 6678 atoms, of which 0 are hydrogens and 0 are deuteriums.

In the tables below, the ZeroOcc column contains the number of atoms modelled with zero occupancy, the AltConf column contains the number of residues with at least one atom in alternate conformation and the Trace column contains the number of residues modelled with at most 2 atoms.

- Molecule 1 is a protein called 2-OXOISOVALERATE DEHYDROGENASE ALPHA SUB-UNIT.

Mol	Chain	Residues	Atoms					ZeroOcc	AltConf	Trace
1	A	374	Total	C	N	O	S	0	32	0
			3312	2085	596	609	22			

There are 3 discrepancies between the modelled and reference sequences:

Chain	Residue	Modelled	Actual	Comment	Reference
A	113	ALA	TYR	ENGINEERED MUTATION	UNP P12694
A	292	SER	HIS	CONFLICT	UNP P12694
A	300	PHE	TYR	CONFLICT	UNP P12694

- Molecule 2 is a protein called 2-OXOISOVALERATE DEHYDROGENASE BETA SUB-UNIT.

Mol	Chain	Residues	Atoms					ZeroOcc	AltConf	Trace
2	B	332	Total	C	N	O	S	0	14	0
			2721	1746	458	501	16			

- Molecule 3 is POTASSIUM ION (three-letter code: K) (formula: K).

Mol	Chain	Residues	Atoms		ZeroOcc	AltConf
3	B	1	Total	K	0	0
			1	1		
3	A	1	Total	K	0	0
			1	1		

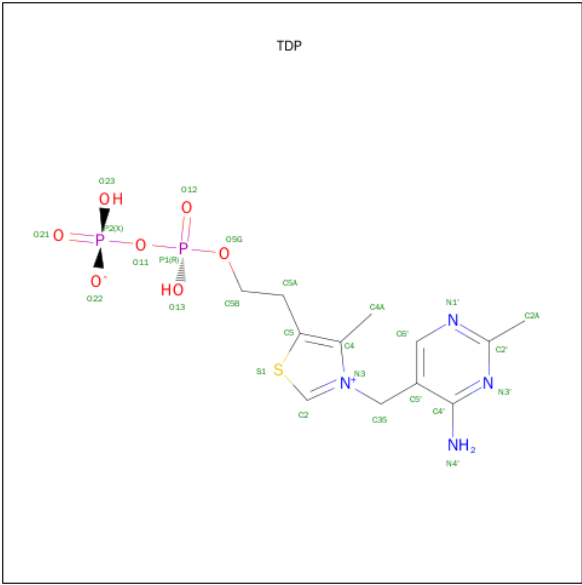
- Molecule 4 is MANGANESE (II) ION (three-letter code: MN) (formula: Mn).

Mol	Chain	Residues	Atoms		ZeroOcc	AltConf
4	A	1	Total	Mn	0	0
			1	1		

- Molecule 5 is CHLORIDE ION (three-letter code: CL) (formula: Cl).

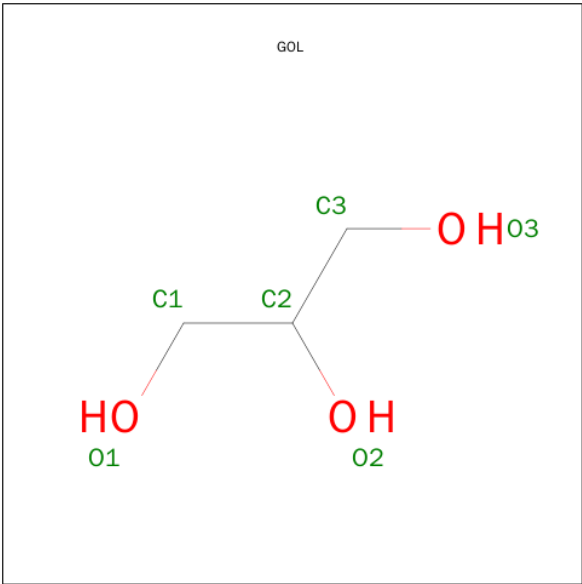
Mol	Chain	Residues	Atoms		ZeroOcc	AltConf
5	A	1	Total	Cl	0	0
			1	1		

- Molecule 6 is THIAMIN DIPHOSPHATE (three-letter code: TDP) (formula: C<sub>12</sub>H<sub>18</sub>N<sub>4</sub>O<sub>7</sub>P<sub>2</sub>S).



Mol	Chain	Residues	Atoms						ZeroOcc	AltConf
6	A	1	Total	C	N	O	P	S	0	0
			26	12	4	7	2	1		

- Molecule 7 is GLYCEROL (three-letter code: GOL) (formula: C<sub>3</sub>H<sub>8</sub>O<sub>3</sub>).



Mol	Chain	Residues	Atoms			ZeroOcc	AltConf
7	B	1	Total	C	O	0	0
			6	3	3		

- Molecule 8 is (4S)-2-METHYL-2,4-PENTANEDIOL (three-letter code: MPD) (formula:  $C_6H_{14}O_2$ ).



Mol	Chain	Residues	Atoms			ZeroOcc	AltConf
8	B	1	Total	C	O	0	0
			8	6	2		

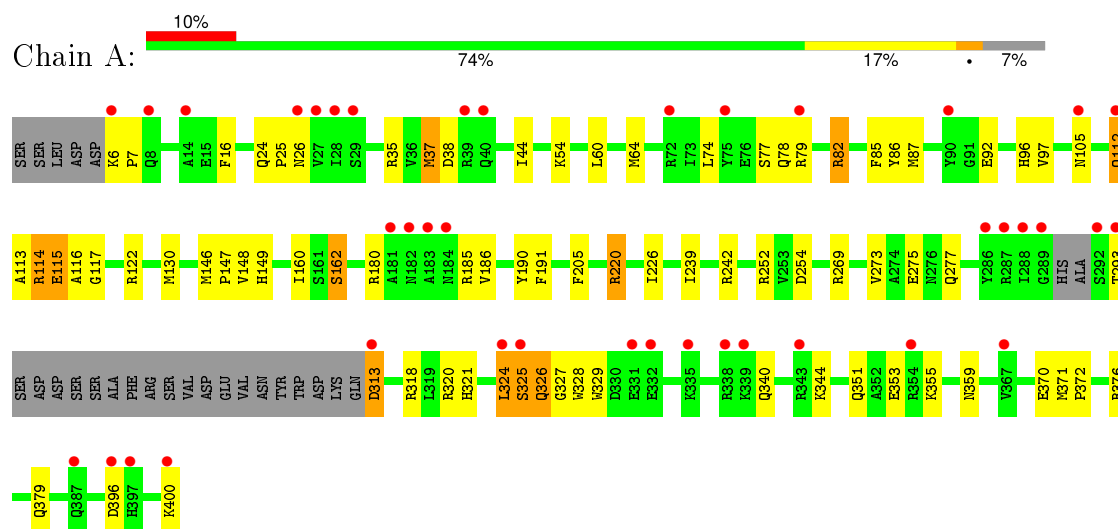
- Molecule 9 is water.

Mol	Chain	Residues	Atoms		ZeroOcc	AltConf
9	A	340	Total	O	0	0
			340	340		
9	B	261	Total	O	0	0
			261	261		

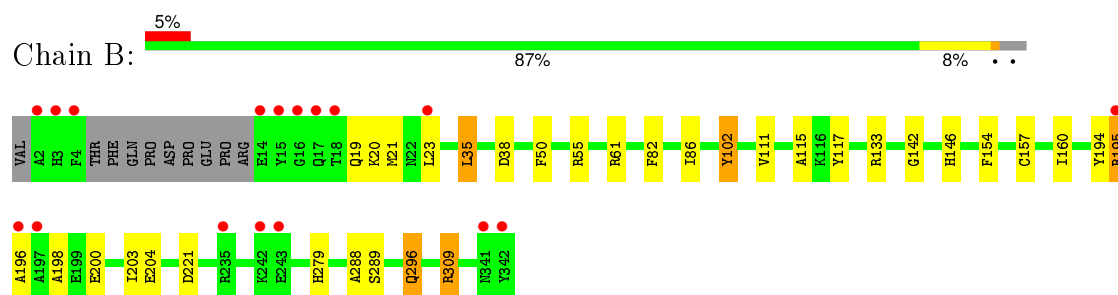
### 3 Residue-property plots [i](#)

These plots are drawn for all protein, RNA and DNA chains in the entry. The first graphic for a chain summarises the proportions of errors displayed in the second graphic. The second graphic shows the sequence view annotated by issues in geometry and electron density. Residues are color-coded according to the number of geometric quality criteria for which they contain at least one outlier: green = 0, yellow = 1, orange = 2 and red = 3 or more. A red dot above a residue indicates a poor fit to the electron density ( $RSRZ > 2$ ). Stretches of 2 or more consecutive residues without any outlier are shown as a green connector. Residues present in the sample, but not in the model, are shown in grey.

#### • Molecule 1: 2-OXOISOVALERATE DEHYDROGENASE ALPHA SUBUNIT



#### • Molecule 2: 2-OXOISOVALERATE DEHYDROGENASE BETA SUBUNIT



## 4 Data and refinement statistics

Property	Value	Source
Space group	P 31 2 1	Depositor
Cell constants a, b, c, $\alpha$ , $\beta$ , $\gamma$	144.84Å 144.84Å 69.25Å 90.00° 90.00° 120.00°	Depositor
Resolution (Å)	30.00 – 1.39 20.31 – 1.39	Depositor EDS
% Data completeness (in resolution range)	97.8 (30.00-1.39) 97.8 (20.31-1.39)	Depositor EDS
$R_{merge}$	0.07	Depositor
$R_{sym}$	(Not available)	Depositor
$\langle I/\sigma(I) \rangle$ <sup>1</sup>	2.09 (at 1.39Å)	Xtriage
Refinement program	REFMAC 5.2.0003	Depositor
R, $R_{free}$	0.149 , 0.170 0.151 , 0.174	Depositor DCC
$R_{free}$ test set	1633 reflections (1.02%)	DCC
Wilson B-factor (Å <sup>2</sup> )	14.8	Xtriage
Anisotropy	0.320	Xtriage
Bulk solvent $k_{sol}$ (e/Å <sup>3</sup> ), $B_{sol}$ (Å <sup>2</sup> )	0.43 , 57.3	EDS
Estimated twinning fraction	0.018 for -h,-k,l	Xtriage
L-test for twinning <sup>2</sup>	$\langle  L  \rangle = 0.50$ , $\langle L^2 \rangle = 0.33$	Xtriage
Outliers	0 of 161892 reflections	Xtriage
$F_o, F_c$ correlation	0.97	EDS
Total number of atoms	6678	wwPDB-VP
Average B, all atoms (Å <sup>2</sup> )	16.0	wwPDB-VP

Xtriage's analysis on translational NCS is as follows: *The largest off-origin peak in the Patterson function is 2.91% of the height of the origin peak. No significant pseudotranslation is detected.*

<sup>1</sup>Intensities estimated from amplitudes.

<sup>2</sup>Theoretical values of  $\langle |L| \rangle$ ,  $\langle L^2 \rangle$  for acentric reflections are 0.5, 0.375 respectively for untwinned datasets, and 0.333, 0.2 for perfectly twinned datasets.



## 5 Model quality

### 5.1 Standard geometry

Bond lengths and bond angles in the following residue types are not validated in this section: GOL, MPD, CL, K, MN, TDP

The Z score for a bond length (or angle) is the number of standard deviations the observed value is removed from the expected value. A bond length (or angle) with  $|Z| > 5$  is considered an outlier worth inspection. RMSZ is the root-mean-square of all Z scores of the bond lengths (or angles).

Mol	Chain	Bond lengths		Bond angles	
		RMSZ	$\# Z  > 5$	RMSZ	$\# Z  > 5$
1	A	1.03	3/3390 (0.1%)	1.16	13/4576 (0.3%)
2	B	0.91	3/2790 (0.1%)	1.04	8/3788 (0.2%)
All	All	0.98	6/6180 (0.1%)	1.11	21/8364 (0.3%)

Chiral center outliers are detected by calculating the chiral volume of a chiral center and verifying if the center is modelled as a planar moiety or with the opposite hand. A planarity outlier is detected by checking planarity of atoms in a peptide group, atoms in a mainchain group or atoms of a sidechain that are expected to be planar.

Mol	Chain	#Chirality outliers	#Planarity outliers
1	A	0	1

All (6) bond length outliers are listed below:

Mol	Chain	Res	Type	Atoms	Z	Observed(Å)	Ideal(Å)
1	A	220	ARG	NE-CZ	8.18	1.43	1.33
1	A	162	SER	CA-CB	7.94	1.64	1.52
1	A	162	SER	CB-OG	7.54	1.52	1.42
2	B	61	ARG	CZ-NH1	5.68	1.40	1.33
2	B	102	TYR	CE1-CZ	-5.39	1.31	1.38
2	B	133	ARG	CG-CD	5.09	1.64	1.51

All (21) bond angle outliers are listed below:

Mol	Chain	Res	Type	Atoms	Z	Observed(°)	Ideal(°)
2	B	61	ARG	NE-CZ-NH1	13.03	126.81	120.30
2	B	61	ARG	NE-CZ-NH2	-10.39	115.10	120.30
1	A	220	ARG	NE-CZ-NH1	10.14	125.37	120.30
1	A	252	ARG	NE-CZ-NH2	-8.37	116.12	120.30
1	A	180	ARG	NE-CZ-NH1	7.64	124.12	120.30

*Continued on next page...*

*Continued from previous page...*

Mol	Chain	Res	Type	Atoms	Z	Observed(°)	Ideal(°)
1	A	37	MET	CG-SD-CE	-7.12	88.80	100.20
2	B	309	ARG	NE-CZ-NH2	-6.84	116.88	120.30
2	B	195	ARG	NE-CZ-NH2	-6.46	117.07	120.30
1	A	313	ASP	CB-CG-OD2	6.09	123.78	118.30
1	A	242	ARG	NE-CZ-NH2	-5.78	117.41	120.30
1	A	180	ARG	NE-CZ-NH2	-5.50	117.55	120.30
1	A	82	ARG	NE-CZ-NH2	-5.45	117.57	120.30
1	A	254	ASP	CB-CG-OD1	5.31	123.08	118.30
2	B	35[A]	LEU	CB-CG-CD2	-5.20	102.17	111.00
2	B	35[B]	LEU	CB-CG-CD2	-5.20	102.17	111.00
1	A	122	ARG	NE-CZ-NH2	-5.15	117.73	120.30
1	A	38	ASP	CB-CG-OD2	5.14	122.93	118.30
2	B	38	ASP	CB-CG-OD2	-5.12	113.69	118.30
1	A	326	GLN	O-C-N	5.06	131.79	123.20
1	A	252	ARG	NE-CZ-NH1	5.02	122.81	120.30
2	B	221	ASP	CB-CG-OD2	5.01	122.81	118.30

There are no chirality outliers.

All (1) planarity outliers are listed below:

Mol	Chain	Res	Type	Group
1	A	112[B]	GLN	Peptide

## 5.2 Too-close contacts ⓘ

In the following table, the Non-H and H(model) columns list the number of non-hydrogen atoms and hydrogen atoms in the chain respectively. The H(added) column lists the number of hydrogen atoms added and optimized by MolProbity. The Clashes column lists the number of clashes within the asymmetric unit, whereas Symm-Clashes lists symmetry related clashes.

Mol	Chain	Non-H	H(model)	H(added)	Clashes	Symm-Clashes
1	A	3312	0	3187	116	1
2	B	2721	0	2667	29	0
3	A	1	0	0	0	0
3	B	1	0	0	0	0
4	A	1	0	0	0	0
5	A	1	0	0	0	0
6	A	26	0	16	1	0
7	B	6	0	8	0	0
8	B	8	0	14	0	0
9	A	340	0	0	19	0

*Continued on next page...*

*Continued from previous page...*

Mol	Chain	Non-H	H(model)	H(added)	Clashes	Symm-Clashes
9	B	261	0	0	2	0
All	All	6678	0	5892	146	1

The all-atom clashscore is defined as the number of clashes found per 1000 atoms (including hydrogen atoms). The all-atom clashscore for this structure is 12.

All (146) close contacts within the same asymmetric unit are listed below, sorted by their clash magnitude.

Atom-1	Atom-2	Interatomic distance (Å)	Clash overlap (Å)
6:A:601:TDP:C2	6:A:601:TDP:H2	0.97	1.48
1:A:92[A]:GLU:OE2	1:A:114[A]:ARG:HD2	1.28	1.32
1:A:186[B]:VAL:CG2	1:A:273[B]:VAL:CG2	2.08	1.29
1:A:92[A]:GLU:OE2	1:A:114[A]:ARG:CD	1.85	1.21
1:A:92[A]:GLU:OE1	1:A:220:ARG:HD2	1.34	1.20
1:A:186[B]:VAL:CG2	1:A:273[B]:VAL:HG23	1.67	1.20
1:A:186[B]:VAL:HG23	1:A:273[B]:VAL:CG2	1.75	1.12
1:A:114[B]:ARG:HA	9:A:2124:HOH:O	1.51	1.11
1:A:92[A]:GLU:OE1	1:A:220:ARG:CD	2.07	1.02
1:A:26:ASN:HB3	9:A:2035:HOH:O	1.62	1.00
1:A:149[A]:HIS:CE1	9:A:2162:HOH:O	2.16	0.97
1:A:112[A]:GLN:HE21	1:A:220:ARG:NH2	1.62	0.96
1:A:186[B]:VAL:HG22	1:A:273[B]:VAL:CG2	1.93	0.96
1:A:186[B]:VAL:HG23	1:A:273[B]:VAL:HG21	1.51	0.90
1:A:74:LEU:HD21	1:A:130[A]:MET:SD	2.12	0.88
1:A:112[A]:GLN:NE2	1:A:220:ARG:NH2	2.22	0.87
1:A:92[A]:GLU:OE2	1:A:114[A]:ARG:HD3	1.72	0.86
2:B:111:VAL:HG22	2:B:157[B]:CYS:SG	2.14	0.86
1:A:205[A]:PHE:CD2	9:A:2232:HOH:O	2.28	0.85
1:A:186[B]:VAL:HG21	1:A:273[B]:VAL:HG23	1.55	0.85
1:A:185:ARG:HG2	9:A:2194:HOH:O	1.75	0.84
1:A:149[A]:HIS:ND1	9:A:2162:HOH:O	2.08	0.83
1:A:186[B]:VAL:CG2	1:A:273[B]:VAL:HG22	2.08	0.83
1:A:186[B]:VAL:HG22	1:A:273[B]:VAL:HG23	1.57	0.82
1:A:326:GLN:HB3	1:A:328[A]:TRP:CE2	2.17	0.80
1:A:96[C]:HIS:CE1	1:A:220:ARG:HD3	2.19	0.78
1:A:324[C]:LEU:CD1	1:A:329:TRP:HB3	2.15	0.76
1:A:112[B]:GLN:HG3	1:A:113[B]:ALA:N	2.01	0.76
1:A:112[A]:GLN:HB3	1:A:190:TYR:O	1.86	0.76
1:A:351:GLN:HG2	1:A:355:LYS:HE3	1.67	0.75
1:A:186[B]:VAL:HG22	1:A:273[B]:VAL:HG22	1.65	0.74
1:A:105:ASN:ND2	9:A:2114:HOH:O	2.21	0.74

*Continued on next page...*

*Continued from previous page...*

Atom-1	Atom-2	Interatomic distance (Å)	Clash overlap (Å)
2:B:19:GLN:HE21	2:B:203:ILE:CD1	2.02	0.72
1:A:64[B]:MET:SD	1:A:97[B]:VAL:HG21	2.29	0.72
2:B:289[B]:SER:OG	2:B:309:ARG:NH1	2.22	0.72
1:A:112[A]:GLN:HE21	1:A:220:ARG:HH21	1.37	0.72
1:A:325[A]:SER:C	1:A:327[A]:GLY:H	1.93	0.72
1:A:82:ARG:NH2	9:A:2090:HOH:O	2.25	0.69
1:A:396:ASP:HB2	9:A:2331:HOH:O	1.94	0.68
1:A:6:LYS:HB3	1:A:7:PRO:HD3	1.75	0.68
1:A:324[C]:LEU:HD11	1:A:329:TRP:HB3	1.75	0.68
1:A:96[A]:HIS:HD1	1:A:117:GLY:H	1.41	0.68
2:B:55[A]:ARG:HD2	2:B:195:ARG:HH22	1.58	0.68
1:A:112[A]:GLN:NE2	1:A:220:ARG:HH22	1.90	0.67
1:A:92[C]:GLU:OE2	1:A:220:ARG:HD2	1.96	0.66
1:A:96[C]:HIS:HE1	1:A:220:ARG:HD3	1.60	0.66
2:B:20:LYS:HE2	2:B:198:ALA:HB3	1.76	0.66
1:A:92[C]:GLU:OE1	9:A:2105:HOH:O	2.15	0.65
1:A:205[A]:PHE:HD2	9:A:2232:HOH:O	1.74	0.65
1:A:112[A]:GLN:HG3	1:A:115[A]:GLU:OE1	1.96	0.65
2:B:55[A]:ARG:HD2	2:B:195:ARG:NH2	2.12	0.64
1:A:112[C]:GLN:HB2	1:A:191:PHE:HA	1.78	0.64
1:A:149[A]:HIS:HE1	1:A:162:SER:OG	1.82	0.62
1:A:92[B]:GLU:OE2	1:A:220:ARG:NH1	2.32	0.62
1:A:112[B]:GLN:HA	1:A:160:ILE:HG23	1.81	0.62
1:A:92[B]:GLU:HB3	1:A:96[B]:HIS:CE1	2.35	0.62
2:B:23[B]:LEU:HB3	2:B:194:TYR:HA	1.80	0.62
1:A:112[A]:GLN:HB2	1:A:191:PHE:HA	1.82	0.61
1:A:359:ASN:ND2	1:A:400:LYS:HB3	2.15	0.61
2:B:279:HIS:CE1	2:B:288:ALA:H	2.19	0.60
1:A:112[B]:GLN:CG	1:A:113[B]:ALA:N	2.64	0.60
1:A:324[C]:LEU:HD12	1:A:329:TRP:HB3	1.81	0.60
1:A:114[B]:ARG:CA	9:A:2124:HOH:O	2.26	0.60
1:A:87[B]:MET:CE	1:A:148[B]:VAL:HG21	2.32	0.60
1:A:351:GLN:CG	1:A:355:LYS:HE3	2.32	0.59
1:A:87[B]:MET:HE2	1:A:148[B]:VAL:CG2	2.33	0.59
1:A:85:PHE:CZ	1:A:87[B]:MET:HG3	2.38	0.59
2:B:19:GLN:HE21	2:B:203:ILE:HD11	1.68	0.58
2:B:19:GLN:NE2	2:B:203:ILE:CD1	2.66	0.58
1:A:376:ARG:NH1	9:A:2315:HOH:O	2.37	0.57
1:A:321:HIS:HA	1:A:324[B]:LEU:HD12	1.86	0.57
2:B:19:GLN:NE2	2:B:203:ILE:HD11	2.20	0.57
2:B:20:LYS:HG3	2:B:200:GLU:OE2	2.03	0.57

*Continued on next page...*

*Continued from previous page...*

Atom-1	Atom-2	Interatomic distance (Å)	Clash overlap (Å)
1:A:37:MET:O	1:A:318[A]:ARG:NH2	2.35	0.56
1:A:112[B]:GLN:HG3	9:A:2120:HOH:O	2.06	0.56
1:A:92[C]:GLU:CD	9:A:2105:HOH:O	2.45	0.55
1:A:112[A]:GLN:NE2	1:A:220:ARG:HH21	1.97	0.55
1:A:85:PHE:CE2	1:A:87[B]:MET:HG3	2.41	0.55
1:A:205[A]:PHE:CE2	9:A:2232:HOH:O	2.55	0.55
1:A:35[A]:ARG:HG2	1:A:44:ILE:HD12	1.88	0.54
1:A:114[B]:ARG:O	9:A:2124:HOH:O	2.17	0.54
2:B:279:HIS:HE1	2:B:288:ALA:H	1.53	0.54
1:A:64[B]:MET:CG	1:A:97[B]:VAL:HG21	2.38	0.54
1:A:326:GLN:CB	1:A:328[A]:TRP:CE2	2.90	0.53
2:B:19:GLN:HE21	2:B:203:ILE:HD12	1.72	0.53
1:A:78:GLN:NE2	9:A:2084:HOH:O	2.42	0.53
2:B:55[A]:ARG:HH11	2:B:195:ARG:HH22	1.57	0.53
1:A:112[A]:GLN:CB	1:A:190:TYR:O	2.56	0.53
1:A:324[C]:LEU:N	1:A:324[C]:LEU:HD12	2.24	0.52
1:A:87[B]:MET:HE2	1:A:148[B]:VAL:HG21	1.92	0.52
1:A:340:GLN:HE21	1:A:344:LYS:HE3	1.76	0.51
1:A:324[A]:LEU:HD12	1:A:329:TRP:HB3	1.93	0.51
1:A:326:GLN:HB2	1:A:328[A]:TRP:CD2	2.46	0.51
1:A:275:GLU:OE1	1:A:277:GLN:NE2	2.43	0.51
1:A:326:GLN:HB3	1:A:328[A]:TRP:NE1	2.26	0.51
2:B:204:GLU:OE1	9:B:2169:HOH:O	2.20	0.50
2:B:146[C]:HIS:CE1	9:B:2127:HOH:O	2.64	0.50
1:A:326:GLN:HB2	1:A:328[A]:TRP:CG	2.46	0.50
1:A:186[B]:VAL:HG23	1:A:273[B]:VAL:HG22	1.80	0.50
1:A:87[B]:MET:HE3	1:A:148[B]:VAL:HG21	1.94	0.50
1:A:325[A]:SER:C	1:A:327[A]:GLY:N	2.65	0.49
1:A:326:GLN:CB	1:A:328[A]:TRP:CD2	2.96	0.49
1:A:113[B]:ALA:O	1:A:114[B]:ARG:HB2	2.13	0.49
2:B:35[B]:LEU:N	2:B:35[B]:LEU:CD2	2.76	0.49
2:B:35[B]:LEU:N	2:B:35[B]:LEU:HD23	2.29	0.48
1:A:370[A]:GLU:O	1:A:372:PRO:HD3	2.12	0.48
1:A:87[B]:MET:CE	1:A:148[B]:VAL:CG2	2.91	0.48
1:A:396:ASP:CB	9:A:2331:HOH:O	2.55	0.47
1:A:92[A]:GLU:OE1	1:A:220:ARG:NE	2.47	0.47
1:A:146[B]:MET:O	1:A:149[B]:HIS:HD2	1.98	0.47
1:A:147:PRO:O	1:A:149[C]:HIS:HD2	1.97	0.47
1:A:86:TYR:O	1:A:293:THR:HG23	2.14	0.47
2:B:21:MET:CE	2:B:203:ILE:HD13	2.45	0.47
1:A:92[C]:GLU:CD	1:A:220:ARG:HD2	2.34	0.46

*Continued on next page...*

*Continued from previous page...*

Atom-1	Atom-2	Interatomic distance (Å)	Clash overlap (Å)
1:A:149[A]:HIS:CE1	1:A:162:SER:OG	2.66	0.46
1:A:146[B]:MET:HG3	1:A:149[B]:HIS:CD2	2.50	0.46
1:A:359:ASN:HD21	1:A:400:LYS:HD2	1.79	0.46
1:A:359:ASN:ND2	1:A:400:LYS:HD2	2.30	0.46
2:B:19:GLN:NE2	2:B:203:ILE:HD12	2.30	0.45
1:A:92[B]:GLU:OE1	1:A:96[B]:HIS:HE1	2.00	0.45
1:A:113[B]:ALA:HB1	1:A:114[B]:ARG:CZ	2.47	0.45
1:A:96[B]:HIS:CD2	1:A:115[B]:GLU:HA	2.52	0.44
1:A:82:ARG:HD3	1:A:353:GLU:OE2	2.17	0.44
1:A:371[A]:MET:SD	1:A:379[A]:GLN:NE2	2.90	0.44
1:A:92[B]:GLU:HB3	1:A:96[B]:HIS:ND1	2.32	0.44
1:A:77:SER:OG	1:A:82:ARG:HB2	2.17	0.44
1:A:147:PRO:O	1:A:148[B]:VAL:HG22	2.19	0.43
1:A:313:ASP:OD1	1:A:318[B]:ARG:NH2	2.50	0.43
1:A:54:LYS:HA	1:A:328[B]:TRP:CZ3	2.55	0.42
1:A:78:GLN:OE1	1:A:293:THR:HB	2.18	0.42
2:B:55[B]:ARG:HG3	2:B:195:ARG:NH2	2.35	0.42
2:B:142:GLY:O	2:B:146[B]:HIS:HB2	2.19	0.42
1:A:114[B]:ARG:C	1:A:116:ALA:N	2.72	0.42
2:B:102:TYR:OH	2:B:146[C]:HIS:HE1	2.03	0.42
1:A:82:ARG:HH11	1:A:82:ARG:HD3	1.73	0.41
2:B:296[A]:GLN:HE21	2:B:296[A]:GLN:HB3	1.60	0.41
2:B:82:PHE:CE2	2:B:86:ILE:HD11	2.55	0.41
1:A:60:LEU:O	1:A:64[B]:MET:HG3	2.21	0.41
1:A:6:LYS:HD3	1:A:16:PHE:HD2	1.85	0.41
1:A:115[A]:GLU:N	1:A:115[A]:GLU:CD	2.72	0.41
2:B:115:ALA:HB2	2:B:160:ILE:HG23	2.03	0.41
1:A:320:ARG:O	1:A:324[C]:LEU:HD13	2.21	0.41
1:A:115[A]:GLU:CA	1:A:115[A]:GLU:OE2	2.66	0.40
1:A:24:GLN:HA	1:A:25:PRO:HD3	1.78	0.40
2:B:154:PHE:O	2:B:157[B]:CYS:HB2	2.21	0.40
2:B:55[A]:ARG:HH11	2:B:195:ARG:NH2	2.20	0.40

All (1) symmetry-related close contacts are listed below. The label for Atom-2 includes the symmetry operator and encoded unit-cell translations to be applied.

Atom-1	Atom-2	Interatomic distance (Å)	Clash overlap (Å)
1:A:326:GLN:OE1	1:A:370[A]:GLU:CG[3_664]	1.88	0.32

## 5.3 Torsion angles [i](#)

### 5.3.1 Protein backbone [i](#)

In the following table, the Percentiles column shows the percent Ramachandran outliers of the chain as a percentile score with respect to all X-ray entries followed by that with respect to entries of similar resolution.

The Analysed column shows the number of residues for which the backbone conformation was analysed, and the total number of residues.

Mol	Chain	Analysed	Favoured	Allowed	Outliers	Percentiles	
1	A	407/400 (102%)	387 (95%)	14 (3%)	6 (2%)	13	1
2	B	344/342 (101%)	333 (97%)	10 (3%)	1 (0%)	46	19
All	All	751/742 (101%)	720 (96%)	24 (3%)	7 (1%)	30	4

All (7) Ramachandran outliers are listed below:

Mol	Chain	Res	Type
1	A	325[A]	SER
1	A	325[B]	SER
1	A	325[C]	SER
1	A	226	ILE
2	B	196	ALA
1	A	114[A]	ARG
1	A	114[B]	ARG

### 5.3.2 Protein sidechains [i](#)

In the following table, the Percentiles column shows the percent sidechain outliers of the chain as a percentile score with respect to all X-ray entries followed by that with respect to entries of similar resolution.

The Analysed column shows the number of residues for which the sidechain conformation was analysed, and the total number of residues.

Mol	Chain	Analysed	Rotameric	Outliers	Percentiles	
1	A	346/334 (104%)	338 (98%)	8 (2%)	58	21
2	B	295/289 (102%)	291 (99%)	4 (1%)	74	45
All	All	641/623 (103%)	629 (98%)	12 (2%)	74	29

All (12) residues with a non-rotameric sidechain are listed below:

Mol	Chain	Res	Type
1	A	79	ARG
1	A	115[A]	GLU
1	A	115[B]	GLU
1	A	239	ILE
1	A	269	ARG
1	A	324[A]	LEU
1	A	324[B]	LEU
1	A	324[C]	LEU
2	B	50	PHE
2	B	117	TYR
2	B	296[A]	GLN
2	B	296[B]	GLN

Some sidechains can be flipped to improve hydrogen bonding and reduce clashes. All (4) such sidechains are listed below:

Mol	Chain	Res	Type
1	A	276	ASN
1	A	333	GLN
2	B	19	GLN
2	B	279	HIS

### 5.3.3 RNA [i](#)

There are no RNA molecules in this entry.

### 5.4 Non-standard residues in protein, DNA, RNA chains [i](#)

There are no non-standard protein/DNA/RNA residues in this entry.

### 5.5 Carbohydrates [i](#)

There are no carbohydrates in this entry.

### 5.6 Ligand geometry [i](#)

Of 7 ligands modelled in this entry, 4 are monoatomic - leaving 3 for Mogul analysis.

In the following table, the Counts columns list the number of bonds (or angles) for which Mogul statistics could be retrieved, the number of bonds (or angles) that are observed in the model and the number of bonds (or angles) that are defined in the chemical component dictionary. The Link



column lists molecule types, if any, to which the group is linked. The Z score for a bond length (or angle) is the number of standard deviations the observed value is removed from the expected value. A bond length (or angle) with  $|Z| > 2$  is considered an outlier worth inspection. RMSZ is the root-mean-square of all Z scores of the bond lengths (or angles).

Mol	Type	Chain	Res	Link	Bond lengths			Bond angles		
					Counts	RMSZ	# Z  > 2	Counts	RMSZ	# Z  > 2
6	TDP	A	601	4	21,27,27	1.36	2 (9%)	31,40,40	1.54	7 (22%)
7	GOL	B	701	-	5,5,5	0.44	0	5,5,5	0.23	0
8	MPD	B	901	-	6,7,7	0.38	0	7,10,10	1.17	1 (14%)

In the following table, the Chirals column lists the number of chiral outliers, the number of chiral centers analysed, the number of these observed in the model and the number defined in the chemical component dictionary. Similar counts are reported in the Torsion and Rings columns. '-' means no outliers of that kind were identified.

Mol	Type	Chain	Res	Link	Chirals	Torsions	Rings
6	TDP	A	601	4	-	0/16/17/17	0/2/2/2
7	GOL	B	701	-	-	0/4/4/4	0/0/0/0
8	MPD	B	901	-	-	0/5/5/5	0/0/0/0

All (2) bond length outliers are listed below:

Mol	Chain	Res	Type	Atoms	Z	Observed(Å)	Ideal(Å)
6	A	601	TDP	C4-N3	-3.12	1.37	1.39
6	A	601	TDP	C35-C5'	2.44	1.56	1.51

All (8) bond angle outliers are listed below:

Mol	Chain	Res	Type	Atoms	Z	Observed(°)	Ideal(°)
8	B	901	MPD	CM-C2-C1	-2.71	104.32	110.24
6	A	601	TDP	N1'-C2'-N3'	-2.23	121.48	125.60
6	A	601	TDP	C4A-C4-C5	-2.15	124.08	128.90
6	A	601	TDP	C4A-C4-N3	-2.04	119.87	122.59
6	A	601	TDP	C6'-N1'-C2'	3.04	121.08	115.77
6	A	601	TDP	C2A-C2'-N1'	3.54	121.28	117.03
6	A	601	TDP	C5A-C5-C4	3.57	130.76	127.56
6	A	601	TDP	C5-C4-N3	3.78	116.02	107.69

There are no chirality outliers.

There are no torsion outliers.

There are no ring outliers.

1 monomer is involved in 1 short contact:

Mol	Chain	Res	Type	Clashes	Symm-Clashes
6	A	601	TDP	1	0

## 5.7 Other polymers [i](#)

There are no such residues in this entry.

## 5.8 Polymer linkage issues [i](#)

There are no chain breaks in this entry.

## 6 Fit of model and data

### 6.1 Protein, DNA and RNA chains

In the following table, the column labelled ‘#RSRZ> 2’ contains the number (and percentage) of RSRZ outliers, followed by percent RSRZ outliers for the chain as percentile scores relative to all X-ray entries and entries of similar resolution. The OWAB column contains the minimum, median, 95<sup>th</sup> percentile and maximum values of the occupancy-weighted average B-factor per residue. The column labelled ‘Q< 0.9’ lists the number of (and percentage) of residues with an average occupancy less than 0.9.

Mol	Chain	Analysed	<RSRZ>	#RSRZ>2	OWAB(Å <sup>2</sup> )	Q<0.9
1	A	374/400 (93%)	0.57	40 (10%) <b>8</b> <b>7</b>	9, 15, 31, 51	0
2	B	332/342 (97%)	0.21	17 (5%) <b>32</b> <b>28</b>	8, 13, 24, 37	0
All	All	706/742 (95%)	0.40	57 (8%) <b>15</b> <b>13</b>	8, 14, 28, 51	0

All (57) RSRZ outliers are listed below:

Mol	Chain	Res	Type	RSRZ
1	A	288	ILE	12.1
2	B	2	ALA	9.4
1	A	28	ILE	9.1
1	A	289	GLY	8.0
1	A	293	THR	7.2
2	B	4	PHE	6.8
1	A	286	TYR	6.5
1	A	26	ASN	5.8
2	B	3	HIS	5.5
1	A	287	ARG	5.4
1	A	183	ALA	5.1
1	A	292	SER	4.8
1	A	324[A]	LEU	4.8
2	B	15	TYR	4.8
2	B	342	TYR	4.8
1	A	182	ASN	4.6
1	A	8	GLN	4.1
1	A	396	ASP	4.1
1	A	6	LYS	4.1
1	A	400	LYS	3.9
2	B	14	GLU	3.5
1	A	343	ARG	3.4
1	A	90	TYR	3.4
1	A	39	ARG	3.4

*Continued on next page...*

*Continued from previous page...*

Mol	Chain	Res	Type	RSRZ
1	A	75	TYR	3.3
1	A	331	GLU	3.3
1	A	387	GLN	3.3
2	B	16	GLY	3.1
2	B	23[A]	LEU	3.1
1	A	338	ARG	3.1
1	A	184	ASN	3.0
2	B	341	ASN	3.0
1	A	79	ARG	3.0
2	B	243	GLU	2.9
1	A	335	LYS	2.8
1	A	397	HIS	2.7
2	B	17	GLN	2.6
1	A	325[A]	SER	2.6
1	A	105	ASN	2.6
2	B	195	ARG	2.5
1	A	332	GLU	2.5
1	A	29	SER	2.5
1	A	354[A]	ARG	2.4
1	A	313	ASP	2.4
2	B	197	ALA	2.4
1	A	40	GLN	2.4
1	A	339	LYS	2.3
2	B	196	ALA	2.3
1	A	112[A]	GLN	2.3
2	B	235	ARG	2.3
1	A	27	VAL	2.3
1	A	367	VAL	2.2
2	B	18	THR	2.2
1	A	14	ALA	2.2
1	A	181	ALA	2.1
1	A	72	ARG	2.0
2	B	242	LYS	2.0

## 6.2 Non-standard residues in protein, DNA, RNA chains ⓘ

There are no non-standard protein/DNA/RNA residues in this entry.

## 6.3 Carbohydrates ⓘ

There are no carbohydrates in this entry.

## 6.4 Ligands [i](#)

In the following table, the Atoms column lists the number of modelled atoms in the group and the number defined in the chemical component dictionary. LLDF column lists the quality of electron density of the group with respect to its neighbouring residues in protein, DNA or RNA chains. The B-factors column lists the minimum, median, 95<sup>th</sup> percentile and maximum values of B factors of atoms in the group. The column labelled 'Q< 0.9' lists the number of atoms with occupancy less than 0.9.

Mol	Type	Chain	Res	Atoms	RSCC	RSR	LLDF	B-factors(Å <sup>2</sup> )	Q<0.9
8	MPD	B	901	8/8	0.85	0.17	3.56	28,35,37,38	0
5	CL	A	504	1/1	0.96	0.15	1.24	24,24,24,24	0
6	TDP	A	601	26/26	0.98	0.08	-0.35	8,10,13,16	0
3	K	B	502	1/1	0.99	0.05	-0.68	11,11,11,11	0
3	K	A	501	1/1	0.99	0.04	-0.95	10,10,10,10	0
7	GOL	B	701	6/6	0.96	0.06	-2.12	14,16,16,16	0
4	MN	A	503	1/1	1.00	0.04	-2.32	9,9,9,9	0

## 6.5 Other polymers [i](#)

There are no such residues in this entry.