



# Full wwPDB X-ray Structure Validation Report ⓘ

Feb 1, 2016 – 12:46 AM GMT

PDB ID : 2BIB  
Title : CRYSTAL STRUCTURE OF THE COMPLETE MODULAR TEICHIOIC ACID PHOSPHORYLCHOLINE ESTERASE PCE (CBPE) FROM STREPTOCOCCUS PNEUMONIAE  
Authors : Hermoso, J.A.; Lagartera, L.; Gonzalez, A.; Garcia, P.; Martinez-Ripoll, M.; Garcia, J.L.; Menendez, M.  
Deposited on : 2005-01-20  
Resolution : 1.92 Å(reported)

This is a Full wwPDB X-ray Structure Validation Report for a publicly released PDB entry.  
We welcome your comments at [validation@mail.wwpdb.org](mailto:validation@mail.wwpdb.org)  
A user guide is available at  
<http://wwpdb.org/validation/2016/XrayValidationReportHelp>  
with specific help available everywhere you see the ⓘ symbol.

---

The following versions of software and data (see [references ⓘ](#)) were used in the production of this report:

MolProbity : 4.02b-467  
Mogul : 1.7 (RC4), CSD as536be (2015)  
Xtriage (Phenix) : 1.9-1692  
EDS : rb-20026688  
Percentile statistics : 20151230.v01 (using entries in the PDB archive December 30th 2015)  
Refmac : 5.8.0135  
CCP4 : 6.5.0  
Ideal geometry (proteins) : Engh & Huber (2001)  
Ideal geometry (DNA, RNA) : Parkinson et al. (1996)  
Validation Pipeline (wwPDB-VP) : trunk26865

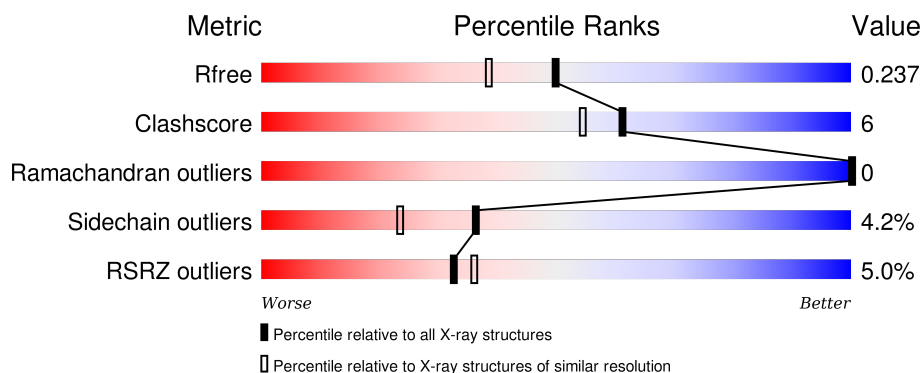
# 1 Overall quality at a glance

The following experimental techniques were used to determine the structure:

## *X-RAY DIFFRACTION*

The reported resolution of this entry is 1.92 Å.

Percentile scores (ranging between 0-100) for global validation metrics of the entry are shown in the following graphic. The table shows the number of entries on which the scores are based.



Metric	Whole archive (#Entries)	Similar resolution (#Entries, resolution range(Å))
$R_{free}$	91344	5832 (1.94-1.90)
Clashscore	102246	6540 (1.94-1.90)
Ramachandran outliers	100387	6464 (1.94-1.90)
Sidechain outliers	100360	6465 (1.94-1.90)
RSRZ outliers	91569	5846 (1.94-1.90)

The table below summarises the geometric issues observed across the polymeric chains and their fit to the electron density. The red, orange, yellow and green segments on the lower bar indicate the fraction of residues that contain outliers for  $\geq 3$ , 2, 1 and 0 types of geometric quality criteria. A grey segment represents the fraction of residues that are not modelled. The numeric value for each fraction is indicated below the corresponding segment, with a dot representing fractions  $\leq 5\%$ . The upper red bar (where present) indicates the fraction of residues that have poor fit to the electron density. The numeric value is given above the bar.

Mol	Chain	Length	Quality of chain
1	A	547	<div> <div>5%</div> <div>86%</div> <div>11% ..</div> </div>

The following table lists non-polymeric compounds, carbohydrate monomers and non-standard residues in protein, DNA, RNA chains that are outliers for geometric or electron-density-fit criteria:

Mol	Type	Chain	Res	Chirality	Geometry	Clashes	Electron density
3	BTB	A	1542	-	-	-	X

*Continued on next page...*

*Continued from previous page...*

Mol	Type	Chain	Res	Chirality	Geometry	Clashes	Electron density
3	BTB	A	1543	-	-	-	X
3	BTB	A	1544	-	-	-	X
3	BTB	A	1545	-	-	-	X
3	BTB	A	1546	-	-	-	X
3	BTB	A	1547	-	-	-	X

## 2 Entry composition [i](#)

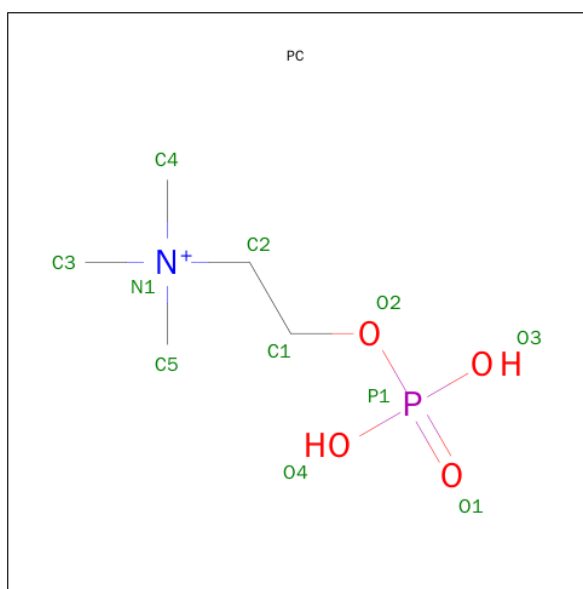
There are 6 unique types of molecules in this entry. The entry contains 4985 atoms, of which 0 are hydrogens and 0 are deuteriums.

In the tables below, the ZeroOcc column contains the number of atoms modelled with zero occupancy, the AltConf column contains the number of residues with at least one atom in alternate conformation and the Trace column contains the number of residues modelled with at most 2 atoms.

- Molecule 1 is a protein called TEICHOIC ACID PHOSPHORYLCHOLINE ESTERASE/CHOLINE BINDING PROTEIN.

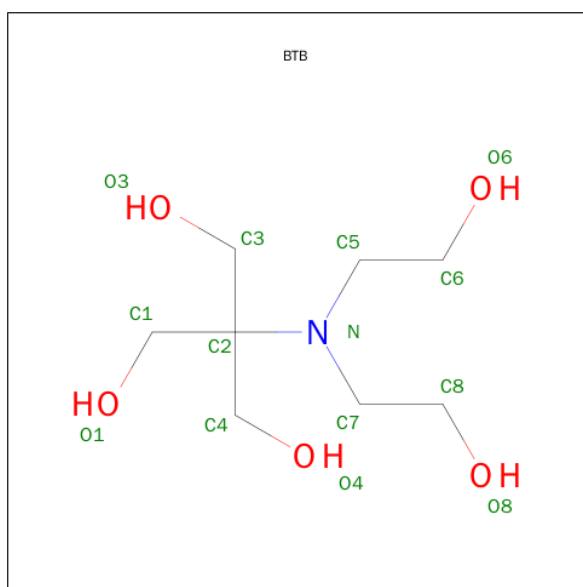
Mol	Chain	Residues	Atoms					ZeroOcc	AltConf	Trace
			Total	C	N	O	S			
1	A	541	4440	2838	734	857	11	0	0	1

- Molecule 2 is PHOSPHOCHOLINE (three-letter code: PC) (formula:  $C_5H_{15}NO_4P$ ).



Mol	Chain	Residues	Atoms					ZeroOcc	AltConf
			Total	C	N	O	P		
2	A	1	11	5	1	4	1	0	0

- Molecule 3 is 2-[BIS-(2-HYDROXY-ETHYL)-AMINO]-2-HYDROXYMETHYL-PROPAN E-1,3-DIOL (three-letter code: BTB) (formula:  $C_8H_{19}NO_5$ ).



Mol	Chain	Residues	Atoms				ZeroOcc	AltConf
3	A	1	Total	C	N	O	0	0
			14	8	1	5		
3	A	1	Total	C	N	O	0	0
			14	8	1	5		
3	A	1	Total	C	N	O	0	0
			14	8	1	5		
3	A	1	Total	C	N	O	0	0
			14	8	1	5		
3	A	1	Total	C	N	O	0	0
			14	8	1	5		
3	A	1	Total	C	N	O	0	0
			14	8	1	5		

- Molecule 4 is ZINC ION (three-letter code: ZN) (formula: Zn).

Mol	Chain	Residues	Atoms		ZeroOcc	AltConf
4	A	2	Total	Zn	0	0
			2	2		

- Molecule 5 is CALCIUM ION (three-letter code: CA) (formula: Ca).

Mol	Chain	Residues	Atoms		ZeroOcc	AltConf
5	A	2	Total	Ca	0	0
			2	2		

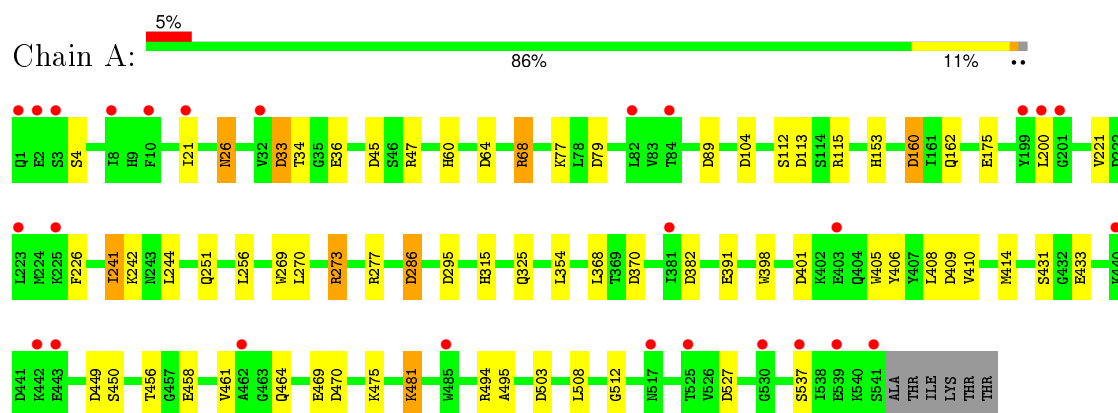
- Molecule 6 is water.

Mol	Chain	Residues	Atoms		ZeroOcc	AltConf
6	A	432	Total 432	O 432	0	0

### 3 Residue-property plots

These plots are drawn for all protein, RNA and DNA chains in the entry. The first graphic for a chain summarises the proportions of errors displayed in the second graphic. The second graphic shows the sequence view annotated by issues in geometry and electron density. Residues are color-coded according to the number of geometric quality criteria for which they contain at least one outlier: green = 0, yellow = 1, orange = 2 and red = 3 or more. A red dot above a residue indicates a poor fit to the electron density ( $RSRZ > 2$ ). Stretches of 2 or more consecutive residues without any outlier are shown as a green connector. Residues present in the sample, but not in the model, are shown in grey.

- Molecule 1: TEICHOIC ACID PHOSPHORYLCHOLINE ESTERASE/ CHOLINE BINDING PROTEIN



## 4 Data and refinement statistics

Property	Value	Source
Space group	C 1 2 1	Depositor
Cell constants a, b, c, $\alpha$ , $\beta$ , $\gamma$	173.49Å 58.12Å 68.65Å 90.00° 108.29° 90.00°	Depositor
Resolution (Å)	27.52 – 1.92 27.50 – 1.92	Depositor EDS
% Data completeness (in resolution range)	95.4 (27.52-1.92) 95.1 (27.50-1.92)	Depositor EDS
$R_{merge}$	0.11	Depositor
$R_{sym}$	(Not available)	Depositor
$\langle I/\sigma(I) \rangle$ <sup>1</sup>	1.75 (at 1.92Å)	Xtriage
Refinement program	REFMAC 5.1.24	Depositor
R, $R_{free}$	0.194 , 0.233 0.200 , 0.237	Depositor DCC
$R_{free}$ test set	3361 reflections (7.58%)	DCC
Wilson B-factor (Å <sup>2</sup> )	25.0	Xtriage
Anisotropy	0.256	Xtriage
Bulk solvent $k_{sol}$ (e/Å <sup>3</sup> ), $B_{sol}$ (Å <sup>2</sup> )	0.37 , 40.7	EDS
Estimated twinning fraction	No twinning to report.	Xtriage
L-test for twinning <sup>2</sup>	$\langle  L  \rangle = 0.49$ , $\langle L^2 \rangle = 0.32$	Xtriage
Outliers	0 of 47730 reflections	Xtriage
$F_o, F_c$ correlation	0.95	EDS
Total number of atoms	4985	wwPDB-VP
Average B, all atoms (Å <sup>2</sup> )	29.0	wwPDB-VP

Xtriage's analysis on translational NCS is as follows: *The largest off-origin peak in the Patterson function is 6.76% of the height of the origin peak. No significant pseudotranslation is detected.*

<sup>1</sup>Intensities estimated from amplitudes.

<sup>2</sup>Theoretical values of  $\langle |L| \rangle$ ,  $\langle L^2 \rangle$  for acentric reflections are 0.5, 0.375 respectively for untwinned datasets, and 0.333, 0.2 for perfectly twinned datasets.



## 5 Model quality

### 5.1 Standard geometry

Bond lengths and bond angles in the following residue types are not validated in this section: PC, ZN, CA, BTB

The Z score for a bond length (or angle) is the number of standard deviations the observed value is removed from the expected value. A bond length (or angle) with  $|Z| > 5$  is considered an outlier worth inspection. RMSZ is the root-mean-square of all Z scores of the bond lengths (or angles).

Mol	Chain	Bond lengths		Bond angles	
		RMSZ	$\# Z  > 5$	RMSZ	$\# Z  > 5$
1	A	0.48	0/4571	0.77	18/6198 (0.3%)

There are no bond length outliers.

All (18) bond angle outliers are listed below:

Mol	Chain	Res	Type	Atoms	Z	Observed(°)	Ideal(°)
1	A	68	ARG	NE-CZ-NH2	-7.73	116.44	120.30
1	A	449	ASP	CB-CG-OD2	7.61	125.15	118.30
1	A	89	ASP	CB-CG-OD2	6.71	124.33	118.30
1	A	527	ASP	CB-CG-OD2	6.33	124.00	118.30
1	A	295	ASP	CB-CG-OD2	6.26	123.93	118.30
1	A	409	ASP	CB-CG-OD2	5.77	123.49	118.30
1	A	113	ASP	CB-CG-OD2	5.68	123.41	118.30
1	A	401	ASP	CB-CG-OD2	5.54	123.29	118.30
1	A	503	ASP	CB-CG-OD2	5.53	123.28	118.30
1	A	160	ASP	CB-CG-OD2	5.50	123.25	118.30
1	A	370	ASP	CB-CG-OD2	5.42	123.18	118.30
1	A	382	ASP	CB-CG-OD2	5.40	123.16	118.30
1	A	68	ARG	NE-CZ-NH1	5.30	122.95	120.30
1	A	45	ASP	CB-CG-OD2	5.11	122.90	118.30
1	A	286	ASP	CB-CG-OD2	5.10	122.89	118.30
1	A	470	ASP	CB-CG-OD2	5.06	122.86	118.30
1	A	33	ASP	CB-CA-C	5.03	120.46	110.40
1	A	64	ASP	CB-CG-OD2	5.02	122.82	118.30

There are no chirality outliers.

There are no planarity outliers.

## 5.2 Too-close contacts ⓘ

In the following table, the Non-H and H(model) columns list the number of non-hydrogen atoms and hydrogen atoms in the chain respectively. The H(added) column lists the number of hydrogen atoms added and optimized by MolProbity. The Clashes column lists the number of clashes within the asymmetric unit, whereas Symm-Clashes lists symmetry related clashes.

Mol	Chain	Non-H	H(model)	H(added)	Clashes	Symm-Clashes
1	A	4440	0	4162	36	0
2	A	11	0	13	0	0
3	A	98	0	133	16	0
4	A	2	0	0	0	0
5	A	2	0	0	0	0
6	A	432	0	0	4	0
All	All	4985	0	4308	49	0

The all-atom clashscore is defined as the number of clashes found per 1000 atoms (including hydrogen atoms). The all-atom clashscore for this structure is 6.

All (49) close contacts within the same asymmetric unit are listed below, sorted by their clash magnitude.

Atom-1	Atom-2	Interatomic distance (Å)	Clash overlap (Å)
1:A:47:ARG:NH2	6:A:2041:HOH:O	2.00	0.90
1:A:273:ARG:HG2	1:A:273:ARG:HH11	1.37	0.89
1:A:315:HIS:HE1	1:A:325:GLN:HE21	1.22	0.86
1:A:315:HIS:CE1	1:A:325:GLN:HE21	1.99	0.80
3:A:1544:BTB:H81	3:A:1544:BTB:O3	1.83	0.78
3:A:1546:BTB:H61	3:A:1546:BTB:H82	1.66	0.77
3:A:1547:BTB:H31	3:A:1547:BTB:H81	1.73	0.71
1:A:68:ARG:HD2	1:A:286:ASP:OD2	1.91	0.70
1:A:200:LEU:HB3	6:A:2005:HOH:O	1.94	0.68
1:A:431:SER:OG	1:A:433:GLU:OE2	2.12	0.67
1:A:315:HIS:HE1	1:A:325:GLN:NE2	1.94	0.63
1:A:494:ARG:HD3	1:A:512:GLY:HA3	1.81	0.62
3:A:1548:BTB:O8	3:A:1548:BTB:H61	2.01	0.60
1:A:273:ARG:NH1	1:A:273:ARG:HG2	2.07	0.59
1:A:315:HIS:CE1	1:A:325:GLN:NE2	2.71	0.58
1:A:251:GLN:NE2	1:A:277:ARG:HH11	2.01	0.57
1:A:153:HIS:HE1	1:A:160:ASP:OD1	1.89	0.56
1:A:241:ILE:HD12	1:A:269:TRP:CZ3	2.42	0.55
1:A:79:ASP:O	1:A:104:ASP:HB2	2.07	0.54
1:A:273:ARG:CG	1:A:273:ARG:NH1	2.71	0.54
3:A:1546:BTB:H61	3:A:1546:BTB:C8	2.37	0.51

*Continued on next page...*

*Continued from previous page...*

Atom-1	Atom-2	Interatomic distance (Å)	Clash overlap (Å)
1:A:241:ILE:HD12	1:A:269:TRP:HZ3	1.75	0.51
3:A:1544:BTB:H52	3:A:1544:BTB:O1	2.12	0.50
1:A:495:ALA:HB3	1:A:508:LEU:HD13	1.93	0.49
1:A:495:ALA:HB3	1:A:508:LEU:CD1	2.45	0.47
3:A:1542:BTB:H62	3:A:1542:BTB:C1	2.45	0.46
3:A:1544:BTB:H72	3:A:1544:BTB:H61	1.60	0.46
3:A:1546:BTB:O8	3:A:1546:BTB:H32	2.16	0.46
1:A:221:VAL:HG22	1:A:244:LEU:HB3	1.98	0.46
3:A:1543:BTB:C8	3:A:1543:BTB:H61	2.46	0.45
1:A:354:LEU:HB2	1:A:368:LEU:HD13	1.98	0.45
1:A:242:LYS:HG2	1:A:273:ARG:NH2	2.32	0.45
1:A:315:HIS:HD2	6:A:2290:HOH:O	2.00	0.44
1:A:241:ILE:HG12	1:A:241:ILE:O	2.18	0.44
3:A:1544:BTB:H81	3:A:1544:BTB:C3	2.48	0.43
1:A:36:GLU:HB3	1:A:60:HIS:O	2.19	0.43
1:A:405:TRP:CZ2	3:A:1545:BTB:H51	2.53	0.43
1:A:4:SER:H	1:A:26:ASN:ND2	2.16	0.43
1:A:458:GLU:OE2	1:A:481:LYS:HE3	2.19	0.43
1:A:33:ASP:C	1:A:34:THR:HG23	2.40	0.42
1:A:251:GLN:NE2	1:A:277:ARG:HD2	2.35	0.42
1:A:408:LEU:HD23	1:A:414:MET:HA	2.02	0.42
1:A:21:ILE:CD1	6:A:2005:HOH:O	2.68	0.42
1:A:4:SER:H	1:A:26:ASN:HD22	1.69	0.41
3:A:1548:BTB:C3	3:A:1548:BTB:H81	2.50	0.41
1:A:398:TRP:CG	3:A:1545:BTB:H42	2.55	0.41
3:A:1546:BTB:H12	3:A:1546:BTB:H52	1.62	0.41
1:A:406:TYR:OH	3:A:1546:BTB:H81	2.22	0.40
1:A:175:GLU:HA	1:A:175:GLU:OE1	2.20	0.40

There are no symmetry-related clashes.

## 5.3 Torsion angles ⓘ

### 5.3.1 Protein backbone ⓘ

In the following table, the Percentiles column shows the percent Ramachandran outliers of the chain as a percentile score with respect to all X-ray entries followed by that with respect to entries of similar resolution.

The Analysed column shows the number of residues for which the backbone conformation was analysed, and the total number of residues.

Mol	Chain	Analysed	Favoured	Allowed	Outliers	Percentiles	
1	A	539/547 (98%)	524 (97%)	15 (3%)	0	100	100

There are no Ramachandran outliers to report.

### 5.3.2 Protein sidechains ⓘ

In the following table, the Percentiles column shows the percent sidechain outliers of the chain as a percentile score with respect to all X-ray entries followed by that with respect to entries of similar resolution.

The Analysed column shows the number of residues for which the sidechain conformation was analysed, and the total number of residues.

Mol	Chain	Analysed	Rotameric	Outliers	Percentiles	
1	A	473/479 (99%)	453 (96%)	20 (4%)	36	23

All (20) residues with a non-rotameric sidechain are listed below:

Mol	Chain	Res	Type
1	A	26	ASN
1	A	77	LYS
1	A	112	SER
1	A	115	ARG
1	A	162	GLN
1	A	226	PHE
1	A	241	ILE
1	A	256	LEU
1	A	270	LEU
1	A	273	ARG
1	A	391	GLU
1	A	410	VAL
1	A	450	SER
1	A	456	THR
1	A	461	VAL
1	A	464	GLN
1	A	469	GLU
1	A	475	LYS
1	A	481	LYS
1	A	537	SER

Some sidechains can be flipped to improve hydrogen bonding and reduce clashes. All (15) such sidechains are listed below:

Mol	Chain	Res	Type
1	A	6	ASN
1	A	26	ASN
1	A	134	GLN
1	A	145	GLN
1	A	153	HIS
1	A	230	HIS
1	A	251	GLN
1	A	268	ASN
1	A	315	HIS
1	A	325	GLN
1	A	355	GLN
1	A	356	ASN
1	A	362	ASN
1	A	392	ASN
1	A	476	GLN

### 5.3.3 RNA [i](#)

There are no RNA molecules in this entry.

## 5.4 Non-standard residues in protein, DNA, RNA chains [i](#)

There are no non-standard protein/DNA/RNA residues in this entry.

## 5.5 Carbohydrates [i](#)

There are no carbohydrates in this entry.

## 5.6 Ligand geometry [i](#)

Of 12 ligands modelled in this entry, 4 are monoatomic - leaving 8 for Mogul analysis.

In the following table, the Counts columns list the number of bonds (or angles) for which Mogul statistics could be retrieved, the number of bonds (or angles) that are observed in the model and the number of bonds (or angles) that are defined in the chemical component dictionary. The Link column lists molecule types, if any, to which the group is linked. The Z score for a bond length (or angle) is the number of standard deviations the observed value is removed from the expected value. A bond length (or angle) with  $|Z| > 2$  is considered an outlier worth inspection. RMSZ is the root-mean-square of all Z scores of the bond lengths (or angles).

Mol	Type	Chain	Res	Link	Bond lengths			Bond angles		
					Counts	RMSZ	# Z  > 2	Counts	RMSZ	# Z  > 2
2	PC	A	1541	4	10,10,10	1.12	1 (10%)	13,15,15	0.92	1 (7%)
3	BTB	A	1542	-	12,13,13	0.25	0	8,16,16	1.42	2 (25%)
3	BTB	A	1543	-	12,13,13	0.45	0	8,16,16	1.46	2 (25%)
3	BTB	A	1544	-	12,13,13	0.32	0	8,16,16	1.47	2 (25%)
3	BTB	A	1545	-	12,13,13	0.31	0	8,16,16	1.47	2 (25%)
3	BTB	A	1546	-	12,13,13	0.37	0	8,16,16	1.34	2 (25%)
3	BTB	A	1547	-	12,13,13	0.35	0	8,16,16	1.46	2 (25%)
3	BTB	A	1548	-	12,13,13	0.26	0	8,16,16	1.42	2 (25%)

In the following table, the Chirals column lists the number of chiral outliers, the number of chiral centers analysed, the number of these observed in the model and the number defined in the chemical component dictionary. Similar counts are reported in the Torsion and Rings columns. '-' means no outliers of that kind were identified.

Mol	Type	Chain	Res	Link	Chirals	Torsions	Rings
2	PC	A	1541	4	-	0/8/8/8	0/0/0/0
3	BTB	A	1542	-	-	0/21/21/21	0/0/0/0
3	BTB	A	1543	-	-	0/21/21/21	0/0/0/0
3	BTB	A	1544	-	-	0/21/21/21	0/0/0/0
3	BTB	A	1545	-	-	0/21/21/21	0/0/0/0
3	BTB	A	1546	-	-	0/21/21/21	0/0/0/0
3	BTB	A	1547	-	-	0/21/21/21	0/0/0/0
3	BTB	A	1548	-	-	0/21/21/21	0/0/0/0

All (1) bond length outliers are listed below:

Mol	Chain	Res	Type	Atoms	Z	Observed(Å)	Ideal(Å)
2	A	1541	PC	P1-O1	2.93	1.60	1.51

All (15) bond angle outliers are listed below:

Mol	Chain	Res	Type	Atoms	Z	Observed(°)	Ideal(°)
3	A	1542	BTB	C7-N-C5	2.00	118.90	112.52
3	A	1548	BTB	C5-N-C2	2.04	119.76	113.86
3	A	1546	BTB	C7-N-C2	2.05	119.79	113.86
3	A	1543	BTB	C7-N-C5	2.07	119.13	112.52
2	A	1541	PC	O4-P1-O3	2.16	115.62	107.38
3	A	1545	BTB	C7-N-C5	2.26	119.72	112.52
3	A	1547	BTB	C5-N-C2	2.31	120.53	113.86
3	A	1545	BTB	C5-N-C2	2.38	120.73	113.86

*Continued on next page...*

*Continued from previous page...*

Mol	Chain	Res	Type	Atoms	Z	Observed(°)	Ideal(°)
3	A	1548	BTB	C7-N-C2	2.53	121.18	113.86
3	A	1546	BTB	C7-N-C5	2.54	120.61	112.52
3	A	1544	BTB	C7-N-C5	2.54	120.63	112.52
3	A	1543	BTB	C7-N-C2	2.76	121.82	113.86
3	A	1542	BTB	C5-N-C2	2.78	121.90	113.86
3	A	1547	BTB	C7-N-C2	2.80	121.96	113.86
3	A	1544	BTB	C7-N-C2	2.85	122.09	113.86

There are no chirality outliers.

There are no torsion outliers.

There are no ring outliers.

7 monomers are involved in 16 short contacts:

Mol	Chain	Res	Type	Clashes	Symm-Clashes
3	A	1542	BTB	1	0
3	A	1543	BTB	1	0
3	A	1544	BTB	4	0
3	A	1545	BTB	2	0
3	A	1546	BTB	5	0
3	A	1547	BTB	1	0
3	A	1548	BTB	2	0

## 5.7 Other polymers [i](#)

There are no such residues in this entry.

## 5.8 Polymer linkage issues [i](#)

There are no chain breaks in this entry.

## 6 Fit of model and data

### 6.1 Protein, DNA and RNA chains

In the following table, the column labelled ‘#RSRZ> 2’ contains the number (and percentage) of RSRZ outliers, followed by percent RSRZ outliers for the chain as percentile scores relative to all X-ray entries and entries of similar resolution. The OWAB column contains the minimum, median, 95<sup>th</sup> percentile and maximum values of the occupancy-weighted average B-factor per residue. The column labelled ‘Q< 0.9’ lists the number of (and percentage) of residues with an average occupancy less than 0.9.

Mol	Chain	Analysed	<RSRZ>	#RSRZ>2	OWAB(Å <sup>2</sup> )	Q<0.9
1	A	541/547 (98%)	0.23	27 (4%) 32 36	18, 27, 41, 68	0

All (27) RSRZ outliers are listed below:

Mol	Chain	Res	Type	RSRZ
1	A	539	GLU	5.3
1	A	2	GLU	4.9
1	A	1	GLN	4.4
1	A	200	LEU	3.9
1	A	21	ILE	3.6
1	A	443	GLU	3.6
1	A	10	PHE	3.6
1	A	537	SER	3.4
1	A	32	VAL	3.3
1	A	8	ILE	3.2
1	A	223	LEU	2.9
1	A	3	SER	2.6
1	A	403	GLU	2.5
1	A	225	LYS	2.5
1	A	199	TYR	2.5
1	A	517	ASN	2.4
1	A	201	GLY	2.4
1	A	381	ILE	2.4
1	A	82	LEU	2.3
1	A	440	LYS	2.3
1	A	525	THR	2.2
1	A	442	LYS	2.2
1	A	541	SER	2.1
1	A	84	THR	2.1
1	A	530	GLY	2.1
1	A	485	TRP	2.0
1	A	462	ALA	2.0



## 6.2 Non-standard residues in protein, DNA, RNA chains [i](#)

There are no non-standard protein/DNA/RNA residues in this entry.

## 6.3 Carbohydrates [i](#)

There are no carbohydrates in this entry.

## 6.4 Ligands [i](#)

In the following table, the Atoms column lists the number of modelled atoms in the group and the number defined in the chemical component dictionary. LLDF column lists the quality of electron density of the group with respect to its neighbouring residues in protein, DNA or RNA chains. The B-factors column lists the minimum, median, 95<sup>th</sup> percentile and maximum values of B factors of atoms in the group. The column labelled 'Q< 0.9' lists the number of atoms with occupancy less than 0.9.

Mol	Type	Chain	Res	Atoms	RSCC	RSR	LLDF	B-factors(Å <sup>2</sup> )	Q<0.9
3	BTB	A	1546	14/14	0.72	0.22	6.21	61,63,64,66	0
3	BTB	A	1545	14/14	0.57	0.28	6.04	68,70,71,72	0
3	BTB	A	1547	14/14	0.70	0.26	4.63	72,73,74,75	0
3	BTB	A	1544	14/14	0.66	0.19	4.45	54,58,59,61	0
3	BTB	A	1542	14/14	0.84	0.15	2.82	38,43,44,47	0
3	BTB	A	1543	14/14	0.72	0.21	2.58	58,61,62,65	0
3	BTB	A	1548	14/14	0.85	0.23	1.45	60,61,62,63	0
2	PC	A	1541	11/11	0.96	0.12	0.35	22,25,28,30	0
5	CA	A	1551	1/1	1.00	0.09	-0.41	20,20,20,20	0
5	CA	A	1552	1/1	1.00	0.06	-2.18	24,24,24,24	0
4	ZN	A	1549	1/1	0.99	0.07	-3.20	25,25,25,25	0
4	ZN	A	1550	1/1	1.00	0.06	-3.84	27,27,27,27	0

## 6.5 Other polymers [i](#)

There are no such residues in this entry.