



Full wwPDB X-ray Structure Validation Report ⓘ

Jan 31, 2016 – 06:35 PM GMT

PDB ID : 1BJG
Title : D221(169)N MUTANT DOES NOT PROMOTE OPENING OF THE CO-FACTOR IMIDAZOLIDINE RING
Authors : Sage, C.R.; Michelitsch, M.D.; Finer-Moore, J.; Stroud, R.M.
Deposited on : 1998-06-25
Resolution : 2.30 Å(reported)

This is a Full wwPDB X-ray Structure Validation Report for a publicly released PDB entry.
We welcome your comments at validation@mail.wwpdb.org
A user guide is available at
<http://wwpdb.org/validation/2016/XrayValidationReportHelp>
with specific help available everywhere you see the ⓘ symbol.

The following versions of software and data (see [references ⓘ](#)) were used in the production of this report:

MolProbity : 4.02b-467
Mogul : 1.7 (RC4), CSD as536be (2015)
Xtriage (Phenix) : **NOT EXECUTED**
EDS : **NOT EXECUTED**
Percentile statistics : 20151230.v01 (using entries in the PDB archive December 30th 2015)
Ideal geometry (proteins) : Engh & Huber (2001)
Ideal geometry (DNA, RNA) : Parkinson et al. (1996)
Validation Pipeline (wwPDB-VP) : trunk26865

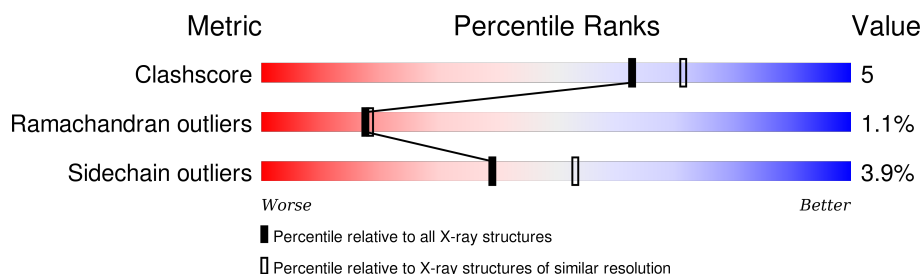
1 Overall quality at a glance

The following experimental techniques were used to determine the structure:

X-RAY DIFFRACTION

The reported resolution of this entry is 2.30 Å.

Percentile scores (ranging between 0-100) for global validation metrics of the entry are shown in the following graphic. The table shows the number of entries on which the scores are based.



Metric	Whole archive (#Entries)	Similar resolution (#Entries, resolution range(Å))
Clashscore	102246	4452 (2.30-2.30)
Ramachandran outliers	100387	4410 (2.30-2.30)
Sidechain outliers	100360	4409 (2.30-2.30)

The table below summarises the geometric issues observed across the polymeric chains and their fit to the electron density. The red, orange, yellow and green segments on the lower bar indicate the fraction of residues that contain outliers for ≥ 3 , 2, 1 and 0 types of geometric quality criteria. A grey segment represents the fraction of residues that are not modelled. The numeric value for each fraction is indicated below the corresponding segment, with a dot representing fractions $\leq 5\%$. The upper red bar (where present) indicates the fraction of residues that have poor fit to the electron density. The numeric value is given above the bar.

Note EDS was not executed.

Mol	Chain	Length	Quality of chain
1	A	264	 86% 13%

2 Entry composition [i](#)

There are 4 unique types of molecules in this entry. The entry contains 2332 atoms, of which 0 are hydrogens and 0 are deuteriums.

In the tables below, the ZeroOcc column contains the number of atoms modelled with zero occupancy, the AltConf column contains the number of residues with at least one atom in alternate conformation and the Trace column contains the number of residues modelled with at most 2 atoms.

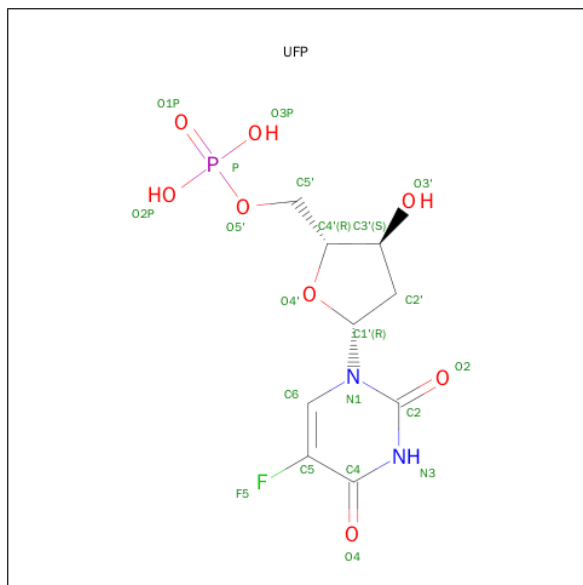
- Molecule 1 is a protein called THYMIDYLATE SYNTHASE.

Mol	Chain	Residues	Atoms					ZeroOcc	AltConf	Trace
			Total	C	N	O	S			
1	A	264	2153	1375	372	394	12	0	0	0

There is a discrepancy between the modelled and reference sequences:

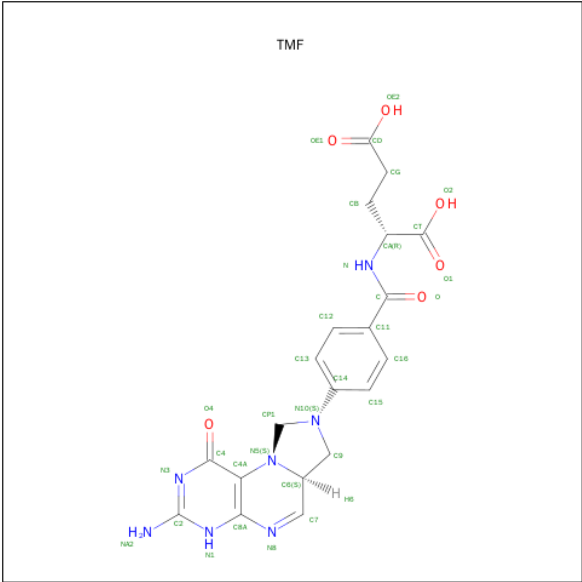
Chain	Residue	Modelled	Actual	Comment	Reference
A	169	ASN	ASP	ENGINEERED	UNP P0A884

- Molecule 2 is 5-FLUORO-2'-DEOXYURIDINE-5'-MONOPHOSPHATE (three-letter code: UFP) (formula: $C_9H_{12}FN_2O_8P$).



Mol	Chain	Residues	Atoms					ZeroOcc	AltConf
			Total	C	F	N	O P		
2	A	1	21	9	1	2	8 1	0	0

- Molecule 3 is 5,10-METHYLENE-6-HYDROFOLIC ACID (three-letter code: TMF) (formula: $C_{20}H_{21}N_7O_6$).



Mol	Chain	Residues	Atoms				ZeroOcc	AltConf
3	A	1	Total	C	N	O	0	1
			66	40	14	12		

- Molecule 4 is water.

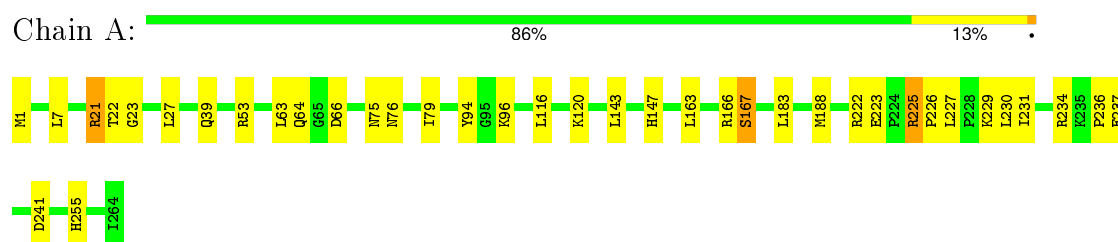
Mol	Chain	Residues	Atoms		ZeroOcc	AltConf
4	A	92	Total	O	0	0
			92	92		

3 Residue-property plots

These plots are drawn for all protein, RNA and DNA chains in the entry. The first graphic for a chain summarises the proportions of errors displayed in the second graphic. The second graphic shows the sequence view annotated by issues in geometry and electron density. Residues are color-coded according to the number of geometric quality criteria for which they contain at least one outlier: green = 0, yellow = 1, orange = 2 and red = 3 or more. A red dot above a residue indicates a poor fit to the electron density ($RSRZ > 2$). Stretches of 2 or more consecutive residues without any outlier are shown as a green connector. Residues present in the sample, but not in the model, are shown in grey.

Note EDS was not executed.

• Molecule 1: THYMIDYLATE SYNTHASE



4 Data and refinement statistics

Xtriage (Phenix) and EDS were not executed - this section will therefore be incomplete.

Property	Value	Source
Space group	I 21 3	Depositor
Cell constants a, b, c, α , β , γ	133.00Å 133.00Å 133.00Å 90.00° 90.00° 90.00°	Depositor
Resolution (Å)	7.00 – 2.30	Depositor
% Data completeness (in resolution range)	82.1 (7.00-2.30)	Depositor
R_{merge}	0.07	Depositor
R_{sym}	0.07	Depositor
Refinement program	X-PLOR 3.1	Depositor
R, R_{free}	0.190 , 0.234	Depositor
Estimated twinning fraction	No twinning to report.	Xtriage
Total number of atoms	2332	wwPDB-VP
Average B, all atoms (Å ²)	26.0	wwPDB-VP

5 Model quality [i](#)

5.1 Standard geometry [i](#)

Bond lengths and bond angles in the following residue types are not validated in this section: UFP, CXM, TMF

The Z score for a bond length (or angle) is the number of standard deviations the observed value is removed from the expected value. A bond length (or angle) with $|Z| > 5$ is considered an outlier worth inspection. RMSZ is the root-mean-square of all Z scores of the bond lengths (or angles).

Mol	Chain	Bond lengths		Bond angles	
		RMSZ	$\# Z > 5$	RMSZ	$\# Z > 5$
1	A	0.85	1/2202 (0.0%)	0.63	0/2990

All (1) bond length outliers are listed below:

Mol	Chain	Res	Type	Atoms	Z	Observed(Å)	Ideal(Å)
1	A	167	SER	CA-CB	-5.39	1.44	1.52

There are no bond angle outliers.

There are no chirality outliers.

There are no planarity outliers.

5.2 Too-close contacts [i](#)

In the following table, the Non-H and H(model) columns list the number of non-hydrogen atoms and hydrogen atoms in the chain respectively. The H(added) column lists the number of hydrogen atoms added and optimized by MolProbity. The Clashes column lists the number of clashes within the asymmetric unit, whereas Symm-Clashes lists symmetry related clashes.

Mol	Chain	Non-H	H(model)	H(added)	Clashes	Symm-Clashes
1	A	2153	0	2081	21	0
2	A	21	0	9	3	0
3	A	66	0	38	5	0
4	A	92	0	0	0	0
All	All	2332	0	2128	23	0

The all-atom clashscore is defined as the number of clashes found per 1000 atoms (including hydrogen atoms). The all-atom clashscore for this structure is 5.

All (23) close contacts within the same asymmetric unit are listed below, sorted by their clash

magnitude.

Atom-1	Atom-2	Interatomic distance (Å)	Clash overlap (Å)
1:A:229:LYS:HZ3	1:A:231:ILE:HD11	1.42	0.84
1:A:143:LEU:HD11	3:A:267[B]:TMF:HN1	1.52	0.75
1:A:229:LYS:NZ	1:A:231:ILE:HD11	2.06	0.70
1:A:53:ARG:NH2	1:A:75:ASN:O	2.39	0.55
1:A:143:LEU:HD11	3:A:267[B]:TMF:N1	2.20	0.54
1:A:147:HIS:HB2	1:A:163:LEU:HD11	1.90	0.53
1:A:225:ARG:HB3	1:A:226:PRO:HD2	1.91	0.52
2:A:266:UFP:H1'	3:A:267[A]:TMF:N8	2.25	0.52
1:A:188:MET:HB3	1:A:188:MET:HE2	1.75	0.46
1:A:27:LEU:HA	1:A:27:LEU:HD23	1.81	0.46
1:A:21:ARG:HH21	2:A:266:UFP:H4'	1.80	0.45
1:A:234:ARG:O	1:A:236:PRO:HD3	2.17	0.45
1:A:237:GLU:CD	1:A:237:GLU:H	2.21	0.44
1:A:222:ARG:HG2	1:A:255:HIS:CD2	2.53	0.43
1:A:237:GLU:HB2	1:A:241:ASP:OD2	2.19	0.43
1:A:79:ILE:HB	3:A:267[B]:TMF:H91	2.01	0.43
1:A:64:GLN:HG3	1:A:66:ASP:HB2	2.01	0.43
1:A:166:ARG:HG3	1:A:167:SER:N	2.34	0.43
1:A:1:CXM:HG3	1:A:227:LEU:HD21	2.01	0.42
1:A:223:GLU:O	1:A:255:HIS:HE1	2.03	0.42
2:A:266:UFP:C2	3:A:267[A]:TMF:H7	2.50	0.41
1:A:116:LEU:HD12	1:A:120:LYS:HE3	2.03	0.41
1:A:116:LEU:HD22	1:A:188:MET:HE1	2.02	0.40

There are no symmetry-related clashes.

5.3 Torsion angles ⓘ

5.3.1 Protein backbone ⓘ

In the following table, the Percentiles column shows the percent Ramachandran outliers of the chain as a percentile score with respect to all X-ray entries followed by that with respect to entries of similar resolution.

The Analysed column shows the number of residues for which the backbone conformation was analysed, and the total number of residues.

Mol	Chain	Analysed	Favoured	Allowed	Outliers	Percentiles
1	A	262/264 (99%)	250 (95%)	9 (3%)	3 (1%)	17 18

All (3) Ramachandran outliers are listed below:

Mol	Chain	Res	Type
1	A	94	TYR
1	A	22	THR
1	A	23	GLY

5.3.2 Protein sidechains ⓘ

In the following table, the Percentiles column shows the percent sidechain outliers of the chain as a percentile score with respect to all X-ray entries followed by that with respect to entries of similar resolution.

The Analysed column shows the number of residues for which the sidechain conformation was analysed, and the total number of residues.

Mol	Chain	Analysed	Rotameric	Outliers	Percentiles	
1	A	232/232 (100%)	223 (96%)	9 (4%)	39	53

All (9) residues with a non-rotameric sidechain are listed below:

Mol	Chain	Res	Type
1	A	7	LEU
1	A	21	ARG
1	A	39	GLN
1	A	63	LEU
1	A	76	ASN
1	A	96	LYS
1	A	183	LEU
1	A	225	ARG
1	A	230	LEU

Some sidechains can be flipped to improve hydrogen bonding and reduce clashes. All (9) such sidechains are listed below:

Mol	Chain	Res	Type
1	A	39	GLN
1	A	51	HIS
1	A	68	ASN
1	A	76	ASN
1	A	117	ASN
1	A	151	GLN
1	A	190	GLN
1	A	219	GLN

Continued on next page...

Continued from previous page...

Mol	Chain	Res	Type
1	A	255	HIS

5.3.3 RNA ⓘ

There are no RNA molecules in this entry.

5.4 Non-standard residues in protein, DNA, RNA chains ⓘ

1 non-standard protein/DNA/RNA residue is modelled in this entry.

In the following table, the Counts columns list the number of bonds (or angles) for which Mogul statistics could be retrieved, the number of bonds (or angles) that are observed in the model and the number of bonds (or angles) that are defined in the chemical component dictionary. The Link column lists molecule types, if any, to which the group is linked. The Z score for a bond length (or angle) is the number of standard deviations the observed value is removed from the expected value. A bond length (or angle) with $|Z| > 2$ is considered an outlier worth inspection. RMSZ is the root-mean-square of all Z scores of the bond lengths (or angles).

Mol	Type	Chain	Res	Link	Bond lengths			Bond angles		
					Counts	RMSZ	$\# Z > 2$	Counts	RMSZ	$\# Z > 2$
1	CXM	A	1	1	6,10,11	1.47	1 (16%)	4,11,13	0.90	0

In the following table, the Chirals column lists the number of chiral outliers, the number of chiral centers analysed, the number of these observed in the model and the number defined in the chemical component dictionary. Similar counts are reported in the Torsion and Rings columns. '-' means no outliers of that kind were identified.

Mol	Type	Chain	Res	Link	Chirals	Torsions	Rings
1	CXM	A	1	1	-	0/6/10/12	0/0/0/0

All (1) bond length outliers are listed below:

Mol	Chain	Res	Type	Atoms	Z	Observed(Å)	Ideal(Å)
1	A	1	CXM	CB-CA	-3.45	1.47	1.53

There are no bond angle outliers.

There are no chirality outliers.

There are no torsion outliers.

There are no ring outliers.

1 monomer is involved in 1 short contact:

Mol	Chain	Res	Type	Clashes	Symm-Clashes
1	A	1	CXM	1	0

5.5 Carbohydrates [i](#)

There are no carbohydrates in this entry.

5.6 Ligand geometry [i](#)

3 ligands are modelled in this entry.

In the following table, the Counts columns list the number of bonds (or angles) for which Mogul statistics could be retrieved, the number of bonds (or angles) that are observed in the model and the number of bonds (or angles) that are defined in the chemical component dictionary. The Link column lists molecule types, if any, to which the group is linked. The Z score for a bond length (or angle) is the number of standard deviations the observed value is removed from the expected value. A bond length (or angle) with $|Z| > 2$ is considered an outlier worth inspection. RMSZ is the root-mean-square of all Z scores of the bond lengths (or angles).

Mol	Type	Chain	Res	Link	Bond lengths			Bond angles		
					Counts	RMSZ	# $ Z > 2$	Counts	RMSZ	# $ Z > 2$
2	UFP	A	266	1,3	18,22,22	5.05	10 (55%)	21,33,33	3.36	5 (23%)
3	TMF	A	267[A]	-	26,36,36	3.87	5 (19%)	27,52,52	2.60	8 (29%)
3	TMF	A	267[B]	2	26,36,36	3.94	8 (30%)	27,52,52	2.91	9 (33%)

In the following table, the Chirals column lists the number of chiral outliers, the number of chiral centers analysed, the number of these observed in the model and the number defined in the chemical component dictionary. Similar counts are reported in the Torsion and Rings columns. '-' means no outliers of that kind were identified.

Mol	Type	Chain	Res	Link	Chirals	Torsions	Rings
2	UFP	A	266	1,3	-	0/6/22/22	0/2/2/2
3	TMF	A	267[A]	-	-	0/15/42/42	0/3/4/4
3	TMF	A	267[B]	2	-	0/15/42/42	0/3/4/4

All (23) bond length outliers are listed below:

Mol	Chain	Res	Type	Atoms	Z	Observed(Å)	Ideal(Å)
3	A	267[B]	TMF	C8A-N8	-5.54	1.23	1.37
3	A	267[A]	TMF	C8A-N8	-5.46	1.23	1.37
3	A	267[B]	TMF	C9-C6	-3.49	1.45	1.53
2	A	266	UFP	C2'-C3'	-3.44	1.43	1.52
3	A	267[A]	TMF	C9-C6	-2.81	1.47	1.53

Continued on next page...

Continued from previous page...

Mol	Chain	Res	Type	Atoms	Z	Observed(Å)	Ideal(Å)
3	A	267[B]	TMF	C8A-N1	-2.30	1.31	1.35
2	A	266	UFP	C2'-C1'	-2.26	1.46	1.52
2	A	266	UFP	P-O2P	-2.21	1.46	1.54
3	A	267[B]	TMF	C14-N10	-2.13	1.33	1.38
3	A	267[B]	TMF	C11-C	-2.12	1.45	1.50
3	A	267[A]	TMF	C11-C	-2.11	1.45	1.50
2	A	266	UFP	C4-N3	2.76	1.38	1.33
2	A	266	UFP	O4'-C4'	3.02	1.52	1.45
3	A	267[B]	TMF	CP1-N5	3.33	1.50	1.45
2	A	266	UFP	F5-C5	3.47	1.42	1.35
2	A	266	UFP	O4'-C1'	4.12	1.51	1.42
3	A	267[A]	TMF	O4-C4	5.49	1.37	1.24
3	A	267[B]	TMF	O4-C4	5.62	1.38	1.24
2	A	266	UFP	C6-N1	9.98	1.49	1.35
2	A	266	UFP	C6-C5	11.25	1.57	1.38
2	A	266	UFP	C4-C5	12.49	1.53	1.38
3	A	267[B]	TMF	C7-N8	16.90	1.46	1.27
3	A	267[A]	TMF	C7-N8	17.02	1.46	1.27

All (22) bond angle outliers are listed below:

Mol	Chain	Res	Type	Atoms	Z	Observed(°)	Ideal(°)
3	A	267[B]	TMF	CP1-N10-C9	-9.58	97.30	111.75
3	A	267[A]	TMF	CP1-N10-C9	-8.29	99.25	111.75
3	A	267[B]	TMF	C4A-C4-N3	-5.05	115.70	123.46
3	A	267[A]	TMF	C4A-C4-N3	-4.86	115.98	123.46
3	A	267[B]	TMF	C15-C14-N10	-4.69	115.08	121.38
2	A	266	UFP	F5-C5-C4	-3.35	112.34	118.56
3	A	267[A]	TMF	N3-C2-N1	-3.27	120.17	125.53
3	A	267[B]	TMF	N3-C2-N1	-3.26	120.19	125.53
2	A	266	UFP	O4'-C4'-C3'	-2.93	98.31	105.67
3	A	267[A]	TMF	C9-N10-C14	-2.01	120.71	122.96
3	A	267[B]	TMF	C13-C14-N10	2.11	124.22	121.38
3	A	267[A]	TMF	C11-C-N	2.16	120.78	116.93
3	A	267[B]	TMF	C8A-N8-C7	2.42	123.67	116.52
3	A	267[A]	TMF	C8A-N8-C7	2.46	123.78	116.52
3	A	267[B]	TMF	C4-C4A-C8A	2.55	116.47	114.42
3	A	267[B]	TMF	NA2-C2-N3	2.55	121.42	117.20
2	A	266	UFP	O3P-P-O5'	2.73	114.43	106.56
3	A	267[A]	TMF	C4-C4A-C8A	3.48	117.22	114.42
3	A	267[A]	TMF	C4-N3-C2	6.28	124.66	115.94
3	A	267[B]	TMF	C4-N3-C2	6.43	124.86	115.94

Continued on next page...

Continued from previous page...

Mol	Chain	Res	Type	Atoms	Z	Observed(°)	Ideal(°)
2	A	266	UFP	O4'-C1'-N1	9.08	123.44	107.72
2	A	266	UFP	C4-N3-C2	10.47	124.30	115.25

There are no chirality outliers.

There are no torsion outliers.

There are no ring outliers.

3 monomers are involved in 6 short contacts:

Mol	Chain	Res	Type	Clashes	Symm-Clashes
2	A	266	UFP	3	0
3	A	267[A]	TMF	2	0
3	A	267[B]	TMF	3	0

5.7 Other polymers [i](#)

There are no such residues in this entry.

5.8 Polymer linkage issues [i](#)

There are no chain breaks in this entry.

6 Fit of model and data ⓘ

6.1 Protein, DNA and RNA chains ⓘ

EDS was not executed - this section will therefore be empty.

6.2 Non-standard residues in protein, DNA, RNA chains ⓘ

EDS was not executed - this section will therefore be empty.

6.3 Carbohydrates ⓘ

EDS was not executed - this section will therefore be empty.

6.4 Ligands ⓘ

EDS was not executed - this section will therefore be empty.

6.5 Other polymers ⓘ

EDS was not executed - this section will therefore be empty.