



Full wwPDB X-ray Structure Validation Report ⓘ

Jan 31, 2016 – 06:36 PM GMT

PDB ID : 1BJQ
Title : THE DOLICHOS BIFLORUS SEED LECTIN IN COMPLEX WITH ADE-
NINE
Authors : Hamelryck, T.W.; Loris, R.; Bouckaert, J.; Dao-Thi, M.H.; Wyns, L.; Etzler, M.
Deposited on : 1998-06-26
Resolution : 2.65 Å(reported)

This is a Full wwPDB X-ray Structure Validation Report for a publicly released PDB entry.
We welcome your comments at validation@mail.wwpdb.org
A user guide is available at
<http://wwpdb.org/validation/2016/XrayValidationReportHelp>
with specific help available everywhere you see the ⓘ symbol.

The following versions of software and data (see [references ⓘ](#)) were used in the production of this report:

MolProbity : 4.02b-467
Mogul : 1.7 (RC4), CSD as536be (2015)
Xtriage (Phenix) : 1.9-1692
EDS : rb-20026688
Percentile statistics : 20151230.v01 (using entries in the PDB archive December 30th 2015)
Refmac : 5.8.0135
CCP4 : 6.5.0
Ideal geometry (proteins) : Engh & Huber (2001)
Ideal geometry (DNA, RNA) : Parkinson et al. (1996)
Validation Pipeline (wwPDB-VP) : trunk26865

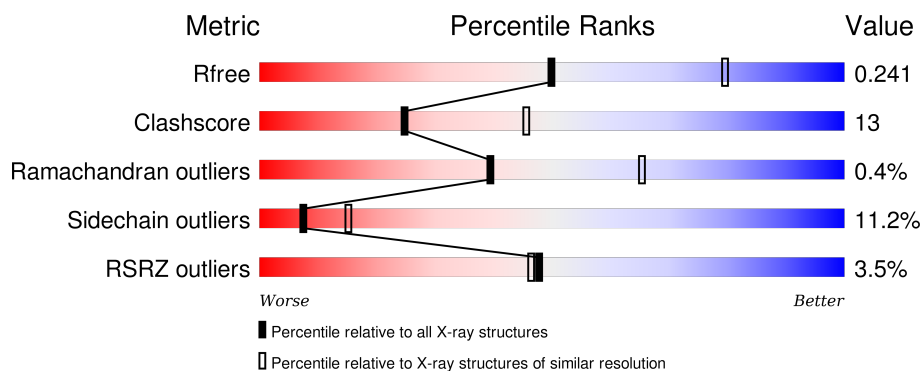
1 Overall quality at a glance ⓘ

The following experimental techniques were used to determine the structure:

X-RAY DIFFRACTION

The reported resolution of this entry is 2.65 Å.

Percentile scores (ranging between 0-100) for global validation metrics of the entry are shown in the following graphic. The table shows the number of entries on which the scores are based.



Metric	Whole archive (#Entries)	Similar resolution (#Entries, resolution range(Å))
R_{free}	91344	3152 (2.70-2.62)
Clashscore	102246	3524 (2.70-2.62)
Ramachandran outliers	100387	3469 (2.70-2.62)
Sidechain outliers	100360	3469 (2.70-2.62)
RSRZ outliers	91569	3161 (2.70-2.62)

The table below summarises the geometric issues observed across the polymeric chains and their fit to the electron density. The red, orange, yellow and green segments on the lower bar indicate the fraction of residues that contain outliers for ≥ 3 , 2, 1 and 0 types of geometric quality criteria. A grey segment represents the fraction of residues that are not modelled. The numeric value for each fraction is indicated below the corresponding segment, with a dot representing fractions $\leq 5\%$. The upper red bar (where present) indicates the fraction of residues that have poor fit to the electron density. The numeric value is given above the bar.

Mol	Chain	Length	Quality of chain
1	A	253	<div> <div>2%</div> <div>66% 31% ..</div> </div>
1	B	253	<div> <div>2%</div> <div>68% 29% .</div> </div>
1	C	253	<div> <div>%</div> <div>64% 26% . 8%</div> </div>
1	D	253	<div> <div>%</div> <div>62% 28% . 8%</div> </div>
1	E	253	<div> <div>3%</div> <div>62% 28% . 8%</div> </div>

Continued on next page...

Continued from previous page...

Mol	Chain	Length	Quality of chain
1	F	253	
1	G	253	
1	H	253	

The following table lists non-polymeric compounds, carbohydrate monomers and non-standard residues in protein, DNA, RNA chains that are outliers for geometric or electron-density-fit criteria:

Mol	Type	Chain	Res	Chirality	Geometry	Clashes	Electron density
4	ADE	A	601	-	-	-	X
4	ADE	B	601	-	-	-	X
4	ADE	C	601	-	-	-	X
4	ADE	D	601	-	-	-	X
4	ADE	E	601	-	-	-	X
4	ADE	F	601	-	-	-	X
4	ADE	G	601	-	-	-	X
4	ADE	H	601	-	-	-	X

2 Entry composition

There are 4 unique types of molecules in this entry. The entry contains 14698 atoms, of which 0 are hydrogens and 0 are deuteriums.

In the tables below, the ZeroOcc column contains the number of atoms modelled with zero occupancy, the AltConf column contains the number of residues with at least one atom in alternate conformation and the Trace column contains the number of residues modelled with at most 2 atoms.

- Molecule 1 is a protein called LECTIN.

Mol	Chain	Residues	Atoms					ZeroOcc	AltConf	Trace
1	A	251	Total	C	N	O	S	0	0	0
			1887	1198	306	382	1			
1	B	253	Total	C	N	O	S	0	0	0
			1898	1204	308	385	1			
1	C	233	Total	C	N	O	S	0	0	0
			1758	1116	287	354	1			
1	D	233	Total	C	N	O	S	0	0	0
			1758	1116	287	354	1			
1	E	233	Total	C	N	O	S	0	0	0
			1758	1116	287	354	1			
1	F	233	Total	C	N	O	S	0	0	0
			1758	1116	287	354	1			
1	G	251	Total	C	N	O	S	0	0	0
			1887	1198	306	382	1			
1	H	253	Total	C	N	O	S	0	0	0
			1898	1204	308	385	1			

There are 8 discrepancies between the modelled and reference sequences:

Chain	Residue	Modelled	Actual	Comment	Reference
A	127	LEU	PHE	CONFLICT	UNP P05045
B	127	LEU	PHE	CONFLICT	UNP P05045
C	127	LEU	PHE	CONFLICT	UNP P05045
D	127	LEU	PHE	CONFLICT	UNP P05045
E	127	LEU	PHE	CONFLICT	UNP P05045
F	127	LEU	PHE	CONFLICT	UNP P05045
G	127	LEU	PHE	CONFLICT	UNP P05045
H	127	LEU	PHE	CONFLICT	UNP P05045

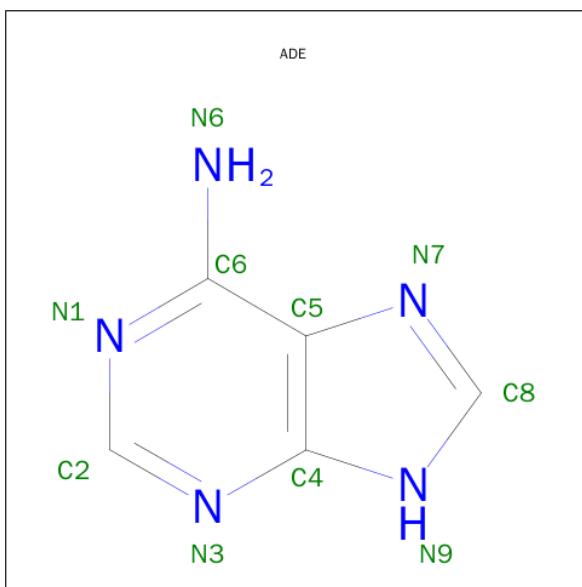
- Molecule 2 is CALCIUM ION (three-letter code: CA) (formula: Ca).

Mol	Chain	Residues	Atoms	ZeroOcc	AltConf
2	G	1	Total Ca 1 1	0	0
2	D	1	Total Ca 1 1	0	0
2	E	1	Total Ca 1 1	0	0
2	H	1	Total Ca 1 1	0	0
2	B	1	Total Ca 1 1	0	0
2	C	1	Total Ca 1 1	0	0
2	A	1	Total Ca 1 1	0	0
2	F	1	Total Ca 1 1	0	0

- Molecule 3 is MANGANESE (II) ION (three-letter code: MN) (formula: Mn).

Mol	Chain	Residues	Atoms	ZeroOcc	AltConf
3	G	1	Total Mn 1 1	0	0
3	D	1	Total Mn 1 1	0	0
3	E	1	Total Mn 1 1	0	0
3	H	1	Total Mn 1 1	0	0
3	B	1	Total Mn 1 1	0	0
3	C	1	Total Mn 1 1	0	0
3	A	1	Total Mn 1 1	0	0
3	F	1	Total Mn 1 1	0	0

- Molecule 4 is ADENINE (three-letter code: ADE) (formula: C₅H₅N₅).

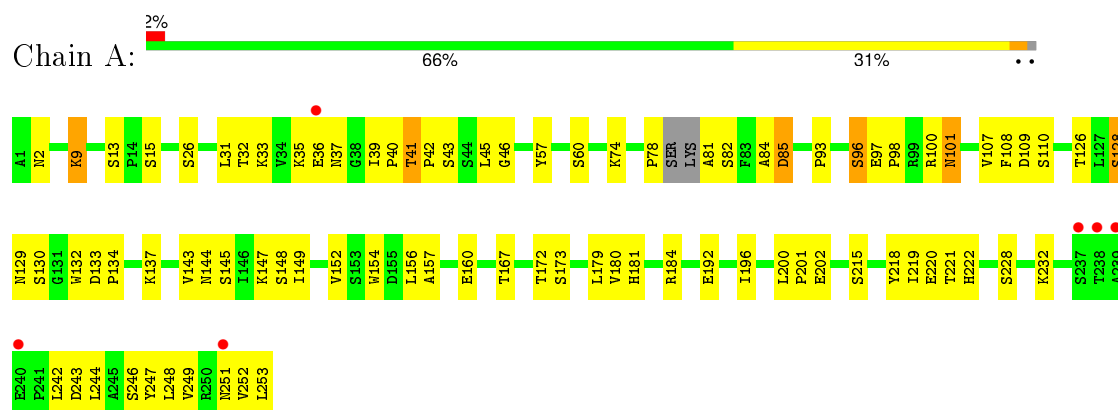


Mol	Chain	Residues	Atoms			ZeroOcc	AltConf
4	A	1	Total	C	N	0	0
			10	5	5		
4	B	1	Total	C	N	0	0
			10	5	5		
4	C	1	Total	C	N	0	0
			10	5	5		
4	D	1	Total	C	N	0	0
			10	5	5		
4	E	1	Total	C	N	0	0
			10	5	5		
4	F	1	Total	C	N	0	0
			10	5	5		
4	G	1	Total	C	N	0	0
			10	5	5		
4	H	1	Total	C	N	0	0
			10	5	5		

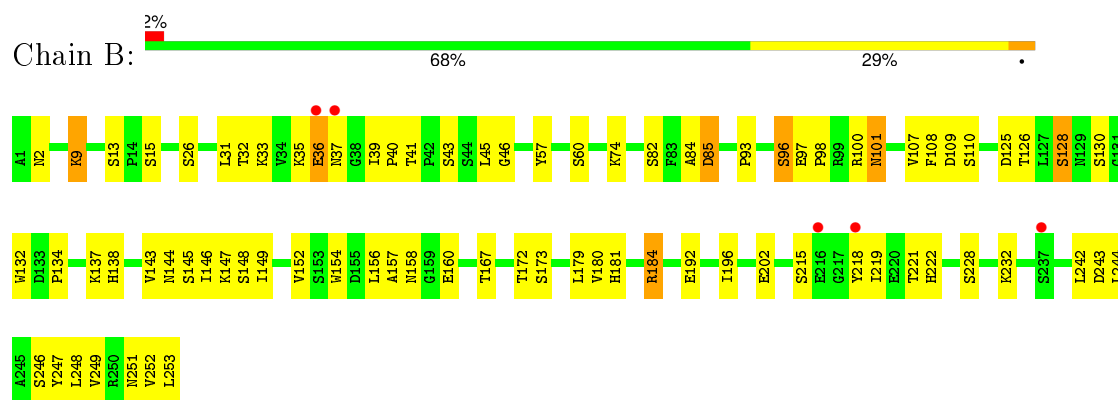
3 Residue-property plots [i](#)

These plots are drawn for all protein, RNA and DNA chains in the entry. The first graphic for a chain summarises the proportions of errors displayed in the second graphic. The second graphic shows the sequence view annotated by issues in geometry and electron density. Residues are color-coded according to the number of geometric quality criteria for which they contain at least one outlier: green = 0, yellow = 1, orange = 2 and red = 3 or more. A red dot above a residue indicates a poor fit to the electron density ($RSRZ > 2$). Stretches of 2 or more consecutive residues without any outlier are shown as a green connector. Residues present in the sample, but not in the model, are shown in grey.

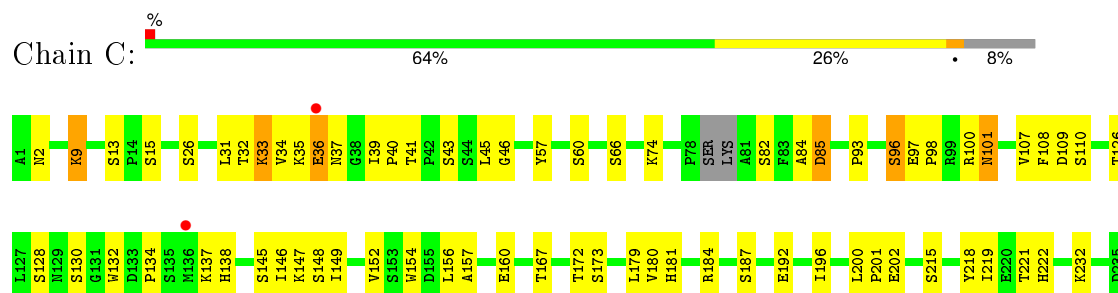
• Molecule 1: LECTIN



• Molecule 1: LECTIN



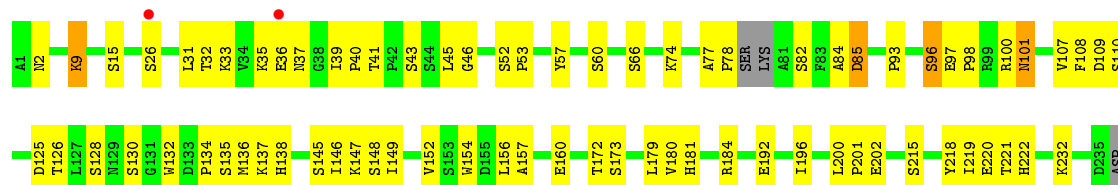
• Molecule 1: LECTIN



ASP
SER
THR
ALA
GLU
PRO
LEU
LEU
ASP
LEU
ALA
SER
SER
TYR
LEU
LEU
VAL
ARG
ASN
VAL
LEU

• Molecule 1: LECTIN

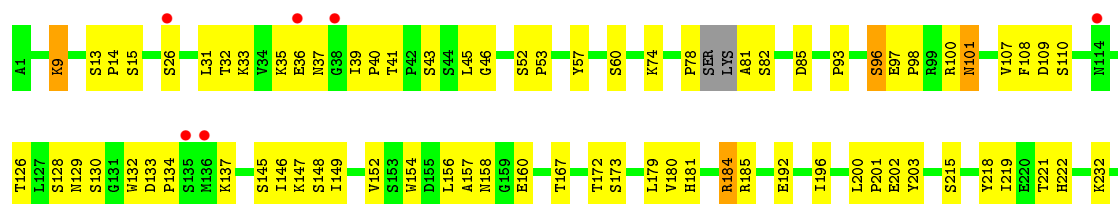
Chain D:  62% 28% 8%



SER
THR
ALA
GLU
PRO
LEU
ASP
LEU
ALA
SER
TYR
LEU
LEU
VAL
ARG
ASN
VAL
LEU

• Molecule 1: LECTIN

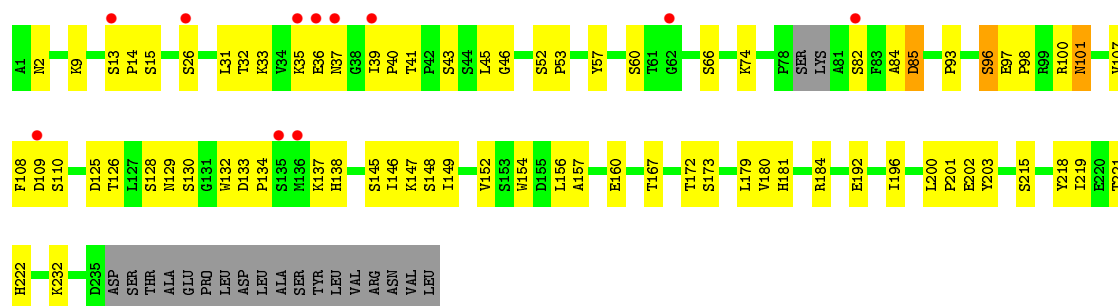
Chain E:  62% 28% 8%



D235
ASP
SER
THR
ALA
GLU
PRO
LEU
LEU
ASP
LEU
ALA
SER
TYR
LEU
LEU
VAL
ARG
ASN
VAL
LEU

• Molecule 1: LECTIN

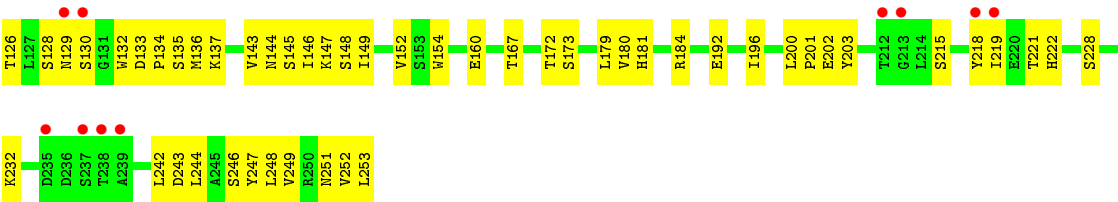
Chain F:  62% 29% 8%



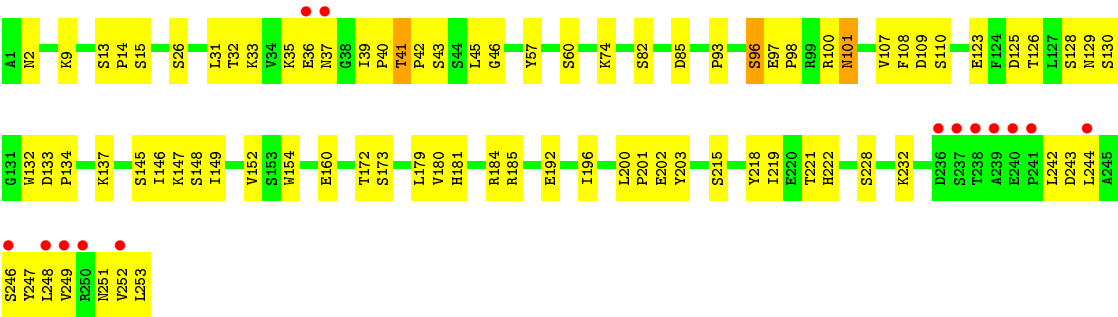
• Molecule 1: LECTIN

Chain G:  65% 32% 8%





● Molecule 1: LECTIN



4 Data and refinement statistics

Property	Value	Source
Space group	P 21 21 21	Depositor
Cell constants a, b, c, α , β , γ	81.38Å 116.14Å 224.62Å 90.00° 90.00° 90.00°	Depositor
Resolution (Å)	20.00 – 2.65 20.00 – 2.65	Depositor EDS
% Data completeness (in resolution range)	92.5 (20.00-2.65) 92.5 (20.00-2.65)	Depositor EDS
R_{merge}	0.12	Depositor
R_{sym}	(Not available)	Depositor
$\langle I/\sigma(I) \rangle$ ¹	3.98 (at 2.67Å)	Xtriage
Refinement program	X-PLOR 3.851	Depositor
R, R_{free}	0.219 , 0.246 0.216 , 0.241	Depositor DCC
R_{free} test set	5889 reflections (10.18%)	DCC
Wilson B-factor (Å ²)	28.8	Xtriage
Anisotropy	0.249	Xtriage
Bulk solvent k_{sol} (e/Å ³), B_{sol} (Å ²)	0.31 , 38.5	EDS
Estimated twinning fraction	No twinning to report.	Xtriage
L-test for twinning ²	$\langle L \rangle = 0.48$, $\langle L^2 \rangle = 0.32$	Xtriage
Outliers	1 of 57851 reflections (0.002%)	Xtriage
F_o, F_c correlation	0.91	EDS
Total number of atoms	14698	wwPDB-VP
Average B, all atoms (Å ²)	25.0	wwPDB-VP

Xtriage's analysis on translational NCS is as follows: *The largest off-origin peak in the Patterson function is 2.93% of the height of the origin peak. No significant pseudotranslation is detected.*

¹Intensities estimated from amplitudes.

²Theoretical values of $\langle |L| \rangle$, $\langle L^2 \rangle$ for acentric reflections are 0.5, 0.375 respectively for untwinned datasets, and 0.333, 0.2 for perfectly twinned datasets.

5 Model quality [i](#)

5.1 Standard geometry [i](#)

Bond lengths and bond angles in the following residue types are not validated in this section: CA, MN, ADE

The Z score for a bond length (or angle) is the number of standard deviations the observed value is removed from the expected value. A bond length (or angle) with $|Z| > 5$ is considered an outlier worth inspection. RMSZ is the root-mean-square of all Z scores of the bond lengths (or angles).

Mol	Chain	Bond lengths		Bond angles	
		RMSZ	# Z >5	RMSZ	# Z >5
1	A	0.44	0/1929	0.67	0/2634
1	B	0.44	0/1941	0.68	0/2652
1	C	0.45	0/1798	0.68	0/2453
1	D	0.45	0/1798	0.68	0/2453
1	E	0.45	0/1798	0.67	0/2453
1	F	0.46	0/1798	0.68	0/2453
1	G	0.45	0/1929	0.67	0/2634
1	H	0.44	0/1941	0.67	0/2652
All	All	0.45	0/14932	0.67	0/20384

There are no bond length outliers.

There are no bond angle outliers.

There are no chirality outliers.

There are no planarity outliers.

5.2 Too-close contacts [i](#)

In the following table, the Non-H and H(model) columns list the number of non-hydrogen atoms and hydrogen atoms in the chain respectively. The H(added) column lists the number of hydrogen atoms added and optimized by MolProbity. The Clashes column lists the number of clashes within the asymmetric unit, whereas Symm-Clashes lists symmetry related clashes.

Mol	Chain	Non-H	H(model)	H(added)	Clashes	Symm-Clashes
1	A	1887	0	1826	54	0
1	B	1898	0	1834	57	0
1	C	1758	0	1703	44	0
1	D	1758	0	1703	45	0
1	E	1758	0	1703	45	0

Continued on next page...

Continued from previous page...

Mol	Chain	Non-H	H(model)	H(added)	Clashes	Symm-Clashes
1	F	1758	0	1703	44	0
1	G	1887	0	1826	61	0
1	H	1898	0	1834	51	0
2	A	1	0	0	0	0
2	B	1	0	0	0	0
2	C	1	0	0	0	0
2	D	1	0	0	0	0
2	E	1	0	0	0	0
2	F	1	0	0	0	0
2	G	1	0	0	0	0
2	H	1	0	0	0	0
3	A	1	0	0	0	0
3	B	1	0	0	0	0
3	C	1	0	0	0	0
3	D	1	0	0	0	0
3	E	1	0	0	0	0
3	F	1	0	0	0	0
3	G	1	0	0	0	0
3	H	1	0	0	0	0
4	A	10	0	4	1	0
4	B	10	0	4	1	0
4	C	10	0	4	1	0
4	D	10	0	4	0	0
4	E	10	0	4	1	0
4	F	10	0	4	1	0
4	G	10	0	4	1	0
4	H	10	0	4	0	0
All	All	14698	0	14164	368	0

The all-atom clashscore is defined as the number of clashes found per 1000 atoms (including hydrogen atoms). The all-atom clashscore for this structure is 13.

All (368) close contacts within the same asymmetric unit are listed below, sorted by their clash magnitude.

Atom-1	Atom-2	Interatomic distance (Å)	Clash overlap (Å)
1:B:158:ASN:H	1:G:136:MET:HE1	1.01	1.12
1:B:158:ASN:N	1:G:136:MET:HE1	1.83	0.92
1:G:37:ASN:HD21	1:G:39:ILE:HG12	1.39	0.86
1:D:37:ASN:HD21	1:D:39:ILE:HG12	1.41	0.85
1:F:37:ASN:HD21	1:F:39:ILE:HG12	1.41	0.85
1:H:37:ASN:HD21	1:H:39:ILE:HG12	1.42	0.84

Continued on next page...

Continued from previous page...

Atom-1	Atom-2	Interatomic distance (Å)	Clash overlap (Å)
1:E:37:ASN:HD21	1:E:39:ILE:HG12	1.41	0.84
1:C:37:ASN:HD21	1:C:39:ILE:HG12	1.40	0.84
1:B:37:ASN:HD21	1:B:39:ILE:HG12	1.41	0.83
1:A:37:ASN:HD21	1:A:39:ILE:HG12	1.42	0.82
1:B:158:ASN:H	1:G:136:MET:CE	1.91	0.82
1:B:184:ARG:HH22	1:G:136:MET:HE3	1.47	0.77
1:G:97:GLU:HG3	1:G:98:PRO:HD2	1.67	0.75
1:B:97:GLU:HG3	1:B:98:PRO:HD2	1.67	0.74
1:C:97:GLU:HG3	1:C:98:PRO:HD2	1.70	0.74
1:H:97:GLU:HG3	1:H:98:PRO:HD2	1.68	0.74
1:E:97:GLU:HG3	1:E:98:PRO:HD2	1.70	0.73
1:F:97:GLU:HG3	1:F:98:PRO:HD2	1.70	0.73
1:A:97:GLU:HG3	1:A:98:PRO:HD2	1.69	0.73
1:D:97:GLU:HG3	1:D:98:PRO:HD2	1.71	0.72
1:F:192:GLU:OE2	1:H:185:ARG:HD2	1.92	0.70
1:B:247:TYR:O	1:B:251:ASN:HB2	1.92	0.69
1:E:35:LYS:NZ	1:E:39:ILE:HD11	2.08	0.69
1:H:247:TYR:O	1:H:251:ASN:HB2	1.91	0.69
1:G:35:LYS:NZ	1:G:39:ILE:HD11	2.08	0.69
1:B:35:LYS:NZ	1:B:39:ILE:HD11	2.07	0.69
1:H:228:SER:HB3	1:H:251:ASN:HD22	1.56	0.69
1:A:247:TYR:O	1:A:251:ASN:HB2	1.93	0.69
1:F:35:LYS:NZ	1:F:39:ILE:HD11	2.07	0.68
1:H:35:LYS:NZ	1:H:39:ILE:HD11	2.09	0.68
1:A:35:LYS:NZ	1:A:39:ILE:HD11	2.09	0.68
1:G:247:TYR:O	1:G:251:ASN:HB2	1.93	0.68
1:D:35:LYS:NZ	1:D:39:ILE:HD11	2.08	0.67
1:B:184:ARG:HH12	1:G:135:SER:CB	2.07	0.67
1:C:35:LYS:NZ	1:C:39:ILE:HD11	2.09	0.67
1:E:14:PRO:HG2	1:F:203:TYR:CZ	2.31	0.66
1:E:101:ASN:H	1:E:101:ASN:HD22	1.47	0.62
1:G:203:TYR:CZ	1:H:14:PRO:HG2	2.34	0.62
1:B:228:SER:HB3	1:B:251:ASN:HD22	1.63	0.61
1:E:31:LEU:O	1:E:46:GLY:HA3	2.00	0.61
1:E:37:ASN:ND2	1:E:39:ILE:HG12	2.15	0.61
1:F:31:LEU:O	1:F:46:GLY:HA3	2.01	0.61
1:C:57:TYR:O	1:C:202:GLU:HG2	2.00	0.61
1:B:37:ASN:ND2	1:B:39:ILE:HG12	2.16	0.61
1:B:101:ASN:H	1:B:101:ASN:HD22	1.48	0.61
1:G:37:ASN:ND2	1:G:39:ILE:HG12	2.13	0.61
1:G:101:ASN:H	1:G:101:ASN:HD22	1.49	0.61

Continued on next page...

Continued from previous page...

Atom-1	Atom-2	Interatomic distance (Å)	Clash overlap (Å)
1:D:57:TYR:O	1:D:202:GLU:HG2	1.99	0.61
1:B:57:TYR:O	1:B:202:GLU:HG2	2.01	0.60
1:H:101:ASN:HD22	1:H:101:ASN:H	1.49	0.60
1:A:248:LEU:O	1:A:252:VAL:N	2.34	0.60
1:C:37:ASN:ND2	1:C:39:ILE:HG12	2.14	0.60
1:B:248:LEU:O	1:B:252:VAL:N	2.35	0.60
1:G:31:LEU:O	1:G:46:GLY:HA3	2.00	0.60
1:H:31:LEU:O	1:H:46:GLY:HA3	2.01	0.60
1:D:136:MET:HE1	1:E:158:ASN:H	1.68	0.59
1:E:101:ASN:N	1:E:101:ASN:HD22	2.01	0.59
1:F:57:TYR:O	1:F:202:GLU:HG2	2.03	0.59
1:G:57:TYR:O	1:G:202:GLU:HG2	2.02	0.59
1:A:101:ASN:H	1:A:101:ASN:HD22	1.47	0.59
1:F:167:THR:HG23	4:F:601:ADE:N6	2.17	0.59
1:A:57:TYR:O	1:A:202:GLU:HG2	2.02	0.59
1:H:248:LEU:O	1:H:252:VAL:N	2.34	0.59
1:E:57:TYR:O	1:E:202:GLU:HG2	2.03	0.59
1:B:31:LEU:O	1:B:46:GLY:HA3	2.01	0.59
1:G:248:LEU:O	1:G:252:VAL:N	2.35	0.59
1:H:57:TYR:O	1:H:202:GLU:HG2	2.03	0.58
1:C:31:LEU:O	1:C:46:GLY:HA3	2.03	0.58
1:G:14:PRO:HG2	1:H:203:TYR:CZ	2.38	0.58
1:F:35:LYS:HZ1	1:F:39:ILE:HD11	1.68	0.58
1:D:37:ASN:ND2	1:D:39:ILE:HG12	2.15	0.58
1:C:149:ILE:HD12	1:C:192:GLU:HG2	1.84	0.58
1:H:248:LEU:HA	1:H:252:VAL:HG23	1.86	0.58
1:G:101:ASN:N	1:G:101:ASN:HD22	2.02	0.57
1:C:101:ASN:HD22	1:C:101:ASN:N	2.02	0.57
1:C:101:ASN:H	1:C:101:ASN:HD22	1.51	0.57
1:G:228:SER:HB3	1:G:251:ASN:HD22	1.70	0.57
1:A:101:ASN:N	1:A:101:ASN:HD22	2.01	0.57
1:A:228:SER:HB3	1:A:251:ASN:HD22	1.67	0.57
1:D:101:ASN:H	1:D:101:ASN:HD22	1.51	0.57
1:G:78:PRO:HD2	1:G:81:ALA:HB3	1.86	0.57
1:H:244:LEU:HA	1:H:247:TYR:HB3	1.87	0.57
1:B:101:ASN:N	1:B:101:ASN:HD22	2.02	0.57
1:F:149:ILE:HD12	1:F:192:GLU:HG2	1.86	0.56
1:A:31:LEU:O	1:A:46:GLY:HA3	2.05	0.56
1:G:248:LEU:HA	1:G:252:VAL:HG23	1.88	0.56
1:F:37:ASN:ND2	1:F:39:ILE:HG12	2.15	0.56
1:C:167:THR:HG23	4:C:601:ADE:N6	2.21	0.56

Continued on next page...

Continued from previous page...

Atom-1	Atom-2	Interatomic distance (Å)	Clash overlap (Å)
1:H:101:ASN:N	1:H:101:ASN:HD22	2.02	0.56
1:E:167:THR:HG23	4:E:601:ADE:N6	2.20	0.56
1:F:101:ASN:HD22	1:F:101:ASN:H	1.52	0.56
1:C:107:VAL:HG23	1:C:108:PHE:CD2	2.41	0.56
1:G:167:THR:HG23	4:G:601:ADE:N6	2.21	0.56
1:D:31:LEU:O	1:D:46:GLY:HA3	2.04	0.56
1:E:149:ILE:HD12	1:E:192:GLU:HG2	1.87	0.56
1:A:244:LEU:HA	1:A:247:TYR:HB3	1.87	0.55
1:B:149:ILE:HD12	1:B:192:GLU:HG2	1.87	0.55
1:A:248:LEU:HA	1:A:252:VAL:HG23	1.88	0.55
1:F:101:ASN:HD22	1:F:101:ASN:N	2.05	0.55
1:B:35:LYS:HZ2	1:B:39:ILE:HD11	1.70	0.55
1:A:149:ILE:HD12	1:A:192:GLU:HG2	1.86	0.55
1:D:107:VAL:HG23	1:D:108:PHE:CD2	2.41	0.55
1:G:244:LEU:HA	1:G:247:TYR:HB3	1.88	0.55
1:D:101:ASN:HD22	1:D:101:ASN:N	2.04	0.55
1:D:149:ILE:HD12	1:D:192:GLU:HG2	1.88	0.55
1:H:149:ILE:HD12	1:H:192:GLU:HG2	1.87	0.54
1:F:107:VAL:HG23	1:F:108:PHE:CD2	2.42	0.54
1:B:244:LEU:HA	1:B:247:TYR:HB3	1.89	0.54
1:H:37:ASN:ND2	1:H:39:ILE:HG12	2.16	0.54
1:A:93:PRO:O	1:A:96:SER:HB2	2.07	0.54
1:G:149:ILE:HD12	1:G:192:GLU:HG2	1.90	0.54
1:G:107:VAL:HG23	1:G:108:PHE:CD2	2.42	0.53
1:B:248:LEU:HA	1:B:252:VAL:HG23	1.89	0.53
1:H:107:VAL:HG23	1:H:108:PHE:CD2	2.43	0.53
1:F:66:SER:HB3	1:H:253:LEU:HB3	1.91	0.53
1:A:128:SER:OG	1:A:134:PRO:O	2.26	0.53
1:A:2:ASN:ND2	1:B:9:LYS:H	2.07	0.53
1:B:184:ARG:HH12	1:G:135:SER:HB2	1.73	0.53
1:A:78:PRO:O	1:A:81:ALA:HB3	2.08	0.53
1:H:128:SER:OG	1:H:134:PRO:O	2.27	0.53
1:H:93:PRO:O	1:H:96:SER:HB2	2.09	0.52
1:B:107:VAL:HG23	1:B:108:PHE:CD2	2.44	0.52
1:E:107:VAL:HG23	1:E:108:PHE:CD2	2.44	0.52
1:B:128:SER:OG	1:B:134:PRO:O	2.27	0.52
1:D:35:LYS:HZ2	1:D:39:ILE:HD11	1.73	0.52
1:A:37:ASN:ND2	1:A:39:ILE:HG12	2.16	0.52
1:A:2:ASN:HD21	1:B:9:LYS:H	1.56	0.52
1:G:154:TRP:HE1	1:G:181:HIS:HE1	1.57	0.52
1:B:93:PRO:O	1:B:96:SER:HB2	2.10	0.52

Continued on next page...

Continued from previous page...

Atom-1	Atom-2	Interatomic distance (Å)	Clash overlap (Å)
1:F:192:GLU:OE1	1:H:185:ARG:NH1	2.43	0.51
1:F:93:PRO:O	1:F:96:SER:HB2	2.10	0.51
1:C:2:ASN:HD21	1:D:9:LYS:H	1.59	0.51
1:G:35:LYS:HZ1	1:G:39:ILE:HD11	1.75	0.51
1:E:154:TRP:HE1	1:E:181:HIS:HE1	1.58	0.51
1:C:128:SER:OG	1:C:134:PRO:O	2.28	0.51
1:A:179:LEU:HD23	1:A:180:VAL:N	2.26	0.51
1:A:107:VAL:HG23	1:A:108:PHE:CD2	2.45	0.51
1:H:35:LYS:HZ2	1:H:39:ILE:HD11	1.73	0.50
1:B:179:LEU:HD23	1:B:180:VAL:N	2.26	0.50
1:D:179:LEU:HD23	1:D:180:VAL:N	2.26	0.50
1:E:93:PRO:O	1:E:96:SER:HB2	2.10	0.50
1:D:93:PRO:O	1:D:96:SER:HB2	2.11	0.50
1:A:253:LEU:HB3	1:C:66:SER:HB3	1.93	0.50
1:A:167:THR:HG23	4:A:601:ADE:N6	2.26	0.50
1:C:93:PRO:O	1:C:96:SER:HB2	2.12	0.50
1:B:253:LEU:HB3	1:D:66:SER:HB3	1.93	0.50
1:A:101:ASN:ND2	1:A:101:ASN:H	2.10	0.50
1:E:35:LYS:HZ1	1:E:39:ILE:HD11	1.74	0.49
1:H:154:TRP:HE1	1:H:181:HIS:HE1	1.60	0.49
1:B:126:THR:HA	1:B:137:LYS:HG2	1.94	0.49
1:F:179:LEU:HD23	1:F:180:VAL:N	2.27	0.49
1:H:179:LEU:HD23	1:H:180:VAL:N	2.27	0.49
1:F:154:TRP:HE1	1:F:181:HIS:HE1	1.59	0.49
1:G:179:LEU:HD23	1:G:180:VAL:N	2.27	0.49
1:D:128:SER:OG	1:D:134:PRO:O	2.28	0.49
1:D:136:MET:CE	1:E:158:ASN:H	2.25	0.49
1:C:101:ASN:ND2	1:C:101:ASN:H	2.10	0.49
1:E:179:LEU:HD23	1:E:180:VAL:N	2.28	0.49
1:C:97:GLU:HG3	1:C:98:PRO:CD	2.43	0.49
1:A:40:PRO:HG3	1:A:221:THR:CG2	2.43	0.49
1:H:100:ARG:HG3	1:H:109:ASP:OD1	2.13	0.49
1:E:128:SER:OG	1:E:134:PRO:O	2.29	0.48
1:G:93:PRO:O	1:G:96:SER:HB2	2.13	0.48
1:B:101:ASN:ND2	1:B:101:ASN:H	2.10	0.48
1:G:101:ASN:H	1:G:101:ASN:ND2	2.11	0.48
1:B:167:THR:HG23	4:B:601:ADE:N6	2.29	0.48
1:G:97:GLU:HG3	1:G:98:PRO:CD	2.40	0.48
1:G:248:LEU:HD23	1:G:252:VAL:HG21	1.95	0.48
1:F:128:SER:OG	1:F:134:PRO:O	2.29	0.48
1:H:97:GLU:HG3	1:H:98:PRO:CD	2.41	0.48

Continued on next page...

Continued from previous page...

Atom-1	Atom-2	Interatomic distance (Å)	Clash overlap (Å)
1:F:192:GLU:CD	1:H:185:ARG:HH11	2.17	0.48
1:E:101:ASN:H	1:E:101:ASN:ND2	2.09	0.48
1:G:128:SER:OG	1:G:134:PRO:O	2.30	0.48
1:A:154:TRP:HE1	1:A:181:HIS:HE1	1.61	0.48
1:G:9:LYS:H	1:H:2:ASN:ND2	2.10	0.48
1:B:184:ARG:HH12	1:G:135:SER:HB3	1.77	0.48
1:F:40:PRO:HG3	1:F:221:THR:CG2	2.44	0.48
1:B:154:TRP:HE1	1:B:181:HIS:HE1	1.62	0.48
1:D:154:TRP:HE1	1:D:181:HIS:HE1	1.60	0.48
1:E:97:GLU:HG3	1:E:98:PRO:CD	2.43	0.47
1:C:179:LEU:HD23	1:C:180:VAL:N	2.28	0.47
1:C:35:LYS:HZ2	1:C:39:ILE:HD11	1.79	0.47
1:H:101:ASN:ND2	1:H:101:ASN:H	2.11	0.47
1:G:100:ARG:HG3	1:G:109:ASP:OD1	2.14	0.47
1:A:35:LYS:HZ2	1:A:39:ILE:HD11	1.76	0.47
1:D:215:SER:HB2	1:D:218:TYR:HD1	1.80	0.47
1:C:154:TRP:HE1	1:C:181:HIS:HE1	1.61	0.47
1:C:126:THR:HA	1:C:137:LYS:HG2	1.97	0.47
1:E:40:PRO:HG3	1:E:221:THR:CG2	2.45	0.47
1:F:97:GLU:HG3	1:F:98:PRO:CD	2.43	0.47
1:F:40:PRO:HB2	1:F:219:ILE:HB	1.97	0.47
1:D:135:SER:HB2	1:E:184:ARG:HH12	1.80	0.47
1:G:243:ASP:OD2	1:G:246:SER:HB2	2.13	0.47
1:B:97:GLU:HG3	1:B:98:PRO:CD	2.41	0.47
1:D:101:ASN:H	1:D:101:ASN:ND2	2.12	0.47
1:G:126:THR:HA	1:G:137:LYS:HG2	1.96	0.47
1:H:40:PRO:HB2	1:H:219:ILE:HB	1.97	0.46
1:H:248:LEU:HD23	1:H:252:VAL:HG21	1.98	0.46
1:H:126:THR:HA	1:H:137:LYS:HG2	1.98	0.46
1:B:215:SER:HB2	1:B:218:TYR:HD1	1.80	0.46
1:C:35:LYS:HZ1	1:C:39:ILE:HD11	1.80	0.46
1:B:248:LEU:HD23	1:B:252:VAL:HG21	1.98	0.46
1:A:126:THR:HA	1:A:137:LYS:HG2	1.97	0.46
1:G:40:PRO:HB2	1:G:219:ILE:HB	1.97	0.46
1:G:9:LYS:H	1:H:2:ASN:HD21	1.63	0.46
1:A:100:ARG:HG3	1:A:109:ASP:OD1	2.15	0.46
1:G:36:GLU:HG3	1:G:36:GLU:H	1.51	0.46
1:G:45:LEU:HD23	1:G:45:LEU:C	2.36	0.46
1:H:40:PRO:HG3	1:H:221:THR:CG2	2.46	0.46
1:D:40:PRO:HG3	1:D:221:THR:CG2	2.46	0.46
1:F:126:THR:HA	1:F:137:LYS:HG2	1.98	0.46

Continued on next page...

Continued from previous page...

Atom-1	Atom-2	Interatomic distance (Å)	Clash overlap (Å)
1:C:215:SER:HB2	1:C:218:TYR:HD1	1.80	0.46
1:B:184:ARG:NH1	1:G:135:SER:HB2	2.31	0.46
1:D:179:LEU:C	1:D:179:LEU:HD23	2.36	0.46
1:G:35:LYS:HZ2	1:G:39:ILE:HD11	1.81	0.46
1:G:40:PRO:HG3	1:G:221:THR:CG2	2.45	0.46
1:B:40:PRO:HG3	1:B:221:THR:CG2	2.46	0.46
1:B:100:ARG:HG3	1:B:109:ASP:OD1	2.16	0.46
1:D:32:THR:OG1	1:D:222:HIS:HD2	1.98	0.46
1:F:100:ARG:HG3	1:F:109:ASP:OD1	2.15	0.46
1:A:215:SER:HB2	1:A:218:TYR:HD1	1.81	0.46
1:A:248:LEU:HD23	1:A:252:VAL:HG21	1.98	0.46
1:C:200:LEU:HB3	1:C:201:PRO:HD2	1.98	0.46
1:E:40:PRO:HB2	1:E:219:ILE:HB	1.98	0.46
1:C:2:ASN:ND2	1:D:9:LYS:H	2.13	0.46
1:A:40:PRO:HB2	1:A:219:ILE:HB	1.98	0.46
1:D:126:THR:HA	1:D:137:LYS:HG2	1.98	0.46
1:E:126:THR:HA	1:E:137:LYS:HG2	1.97	0.46
1:C:9:LYS:H	1:D:2:ASN:HD21	1.64	0.46
1:A:45:LEU:C	1:A:45:LEU:HD23	2.36	0.45
1:E:100:ARG:HG3	1:E:109:ASP:OD1	2.16	0.45
1:A:243:ASP:OD2	1:A:246:SER:HB2	2.16	0.45
1:C:40:PRO:HG3	1:C:221:THR:CG2	2.46	0.45
1:C:32:THR:OG1	1:C:222:HIS:HD2	1.99	0.45
1:D:40:PRO:HB2	1:D:219:ILE:HB	1.98	0.45
1:B:40:PRO:HB2	1:B:219:ILE:HB	1.99	0.45
1:C:36:GLU:H	1:C:36:GLU:HG3	1.51	0.45
1:H:243:ASP:OD2	1:H:246:SER:HB2	2.16	0.45
1:F:172:THR:O	1:F:173:SER:HB2	2.17	0.45
1:B:179:LEU:HD23	1:B:179:LEU:C	2.37	0.45
1:F:215:SER:HB2	1:F:218:TYR:HD1	1.82	0.45
1:G:146:ILE:O	1:G:146:ILE:HG13	2.17	0.45
1:F:179:LEU:HD23	1:F:179:LEU:C	2.37	0.45
1:H:200:LEU:HB3	1:H:201:PRO:HD2	1.99	0.45
1:H:215:SER:HB2	1:H:218:TYR:HD1	1.82	0.45
1:F:101:ASN:H	1:F:101:ASN:ND2	2.13	0.44
1:E:215:SER:HB2	1:E:218:TYR:HD1	1.82	0.44
1:G:215:SER:HB2	1:G:218:TYR:HD1	1.82	0.44
1:D:200:LEU:HB3	1:D:201:PRO:HD2	1.99	0.44
1:C:40:PRO:HB2	1:C:219:ILE:HB	1.99	0.44
1:A:9:LYS:H	1:B:2:ASN:HD21	1.65	0.44
1:E:132:TRP:HB2	1:E:147:LYS:HG3	1.98	0.44

Continued on next page...

Continued from previous page...

Atom-1	Atom-2	Interatomic distance (Å)	Clash overlap (Å)
1:A:32:THR:OG1	1:A:222:HIS:HD2	2.00	0.44
1:E:78:PRO:HD2	1:E:81:ALA:HB3	2.00	0.44
1:H:179:LEU:HD23	1:H:179:LEU:C	2.38	0.44
1:F:84:ALA:HA	1:F:85:ASP:HA	1.77	0.44
1:G:132:TRP:HB2	1:G:147:LYS:HG3	2.00	0.44
1:H:132:TRP:HB2	1:H:147:LYS:HG3	1.99	0.44
1:B:36:GLU:H	1:B:36:GLU:HG3	1.51	0.44
1:E:200:LEU:HB3	1:E:201:PRO:HD2	2.00	0.44
1:B:146:ILE:HG13	1:B:146:ILE:O	2.18	0.44
1:E:146:ILE:HG13	1:E:146:ILE:O	2.17	0.44
1:A:39:ILE:O	1:A:39:ILE:HG13	2.17	0.44
1:G:84:ALA:HA	1:G:85:ASP:HA	1.78	0.44
1:C:45:LEU:C	1:C:45:LEU:HD23	2.37	0.44
1:E:40:PRO:HG3	1:E:221:THR:HG22	1.99	0.44
1:G:200:LEU:HB3	1:G:201:PRO:HD2	1.99	0.44
1:A:132:TRP:HB2	1:A:147:LYS:HG3	2.00	0.44
1:A:35:LYS:HZ1	1:A:39:ILE:HD11	1.83	0.44
1:F:146:ILE:O	1:F:146:ILE:HG13	2.18	0.44
1:E:203:TYR:CZ	1:F:14:PRO:HG2	2.53	0.44
1:G:172:THR:O	1:G:173:SER:HB2	2.18	0.43
1:B:132:TRP:HB2	1:B:147:LYS:HG3	2.00	0.43
1:F:40:PRO:HG3	1:F:221:THR:HG22	2.00	0.43
1:H:172:THR:O	1:H:173:SER:HB2	2.17	0.43
1:F:200:LEU:HB3	1:F:201:PRO:HD2	2.00	0.43
1:C:100:ARG:HG3	1:C:109:ASP:OD1	2.19	0.43
1:H:39:ILE:HG13	1:H:39:ILE:O	2.19	0.43
1:A:9:LYS:H	1:B:2:ASN:ND2	2.16	0.43
1:B:32:THR:OG1	1:B:222:HIS:HD2	2.01	0.43
1:E:45:LEU:HD23	1:E:45:LEU:C	2.39	0.43
1:F:45:LEU:C	1:F:45:LEU:HD23	2.38	0.43
1:B:45:LEU:HD23	1:B:45:LEU:C	2.39	0.43
1:A:179:LEU:HD23	1:A:179:LEU:C	2.39	0.43
1:C:146:ILE:HG13	1:C:146:ILE:O	2.18	0.43
1:E:39:ILE:HG13	1:E:39:ILE:O	2.18	0.43
1:C:9:LYS:H	1:D:2:ASN:ND2	2.16	0.43
1:F:132:TRP:HB2	1:F:147:LYS:HG3	2.00	0.43
1:D:100:ARG:HG3	1:D:109:ASP:OD1	2.19	0.43
1:A:97:GLU:HG3	1:A:98:PRO:CD	2.43	0.43
1:H:249:VAL:HG22	1:H:253:LEU:HD12	2.00	0.43
1:C:132:TRP:HB2	1:C:147:LYS:HG3	2.00	0.43
1:C:179:LEU:HD23	1:C:179:LEU:C	2.38	0.43

Continued on next page...

Continued from previous page...

Atom-1	Atom-2	Interatomic distance (Å)	Clash overlap (Å)
1:A:200:LEU:HB3	1:A:201:PRO:HD2	2.01	0.43
1:A:40:PRO:HG3	1:A:221:THR:HG22	2.01	0.43
1:G:249:VAL:HG22	1:G:253:LEU:HD12	2.01	0.43
1:F:32:THR:OG1	1:F:222:HIS:HD2	2.02	0.43
1:B:156:LEU:HD12	1:B:157:ALA:N	2.34	0.43
1:H:32:THR:OG1	1:H:222:HIS:HD2	2.01	0.43
1:C:172:THR:O	1:C:173:SER:HB2	2.18	0.43
1:H:146:ILE:O	1:H:146:ILE:HG13	2.18	0.43
1:A:249:VAL:HA	1:A:253:LEU:HB2	2.01	0.42
1:E:9:LYS:H	1:F:2:ASN:ND2	2.17	0.42
1:B:243:ASP:OD2	1:B:246:SER:HB2	2.19	0.42
1:D:45:LEU:C	1:D:45:LEU:HD23	2.39	0.42
1:G:40:PRO:HG3	1:G:221:THR:HG22	2.00	0.42
1:B:172:THR:O	1:B:173:SER:HB2	2.19	0.42
1:D:132:TRP:HB2	1:D:147:LYS:HG3	2.01	0.42
1:E:156:LEU:HD12	1:E:157:ALA:N	2.35	0.42
1:H:45:LEU:HD23	1:H:45:LEU:C	2.39	0.42
1:A:156:LEU:HD12	1:A:157:ALA:N	2.33	0.42
1:C:84:ALA:HA	1:C:85:ASP:HA	1.78	0.42
1:E:35:LYS:HZ2	1:E:39:ILE:HD11	1.83	0.42
1:E:172:THR:O	1:E:173:SER:HB2	2.20	0.42
1:H:249:VAL:HA	1:H:253:LEU:HB2	2.01	0.42
1:B:125:ASP:HB3	1:B:138:HIS:CE1	2.54	0.42
1:A:249:VAL:HG22	1:A:253:LEU:HD12	2.01	0.42
1:E:39:ILE:HA	1:E:40:PRO:HD3	1.93	0.42
1:H:40:PRO:HG3	1:H:221:THR:HG22	2.01	0.42
1:D:172:THR:O	1:D:173:SER:HB2	2.19	0.42
1:C:156:LEU:HD12	1:C:157:ALA:N	2.35	0.41
1:F:156:LEU:HD12	1:F:157:ALA:N	2.36	0.41
1:E:32:THR:OG1	1:E:222:HIS:HD2	2.02	0.41
1:H:129:ASN:H	1:H:133:ASP:HB2	1.85	0.41
1:B:143:VAL:O	1:B:144:ASN:HB2	2.20	0.41
1:G:39:ILE:HG13	1:G:39:ILE:O	2.20	0.41
1:E:129:ASN:H	1:E:133:ASP:HB2	1.85	0.41
1:D:77:ALA:HA	1:D:78:PRO:HD3	1.92	0.41
1:B:84:ALA:HA	1:B:85:ASP:HA	1.79	0.41
1:C:39:ILE:O	1:C:39:ILE:HG13	2.19	0.41
1:G:179:LEU:HD23	1:G:179:LEU:C	2.40	0.41
1:D:220:GLU:OE2	1:D:222:HIS:HE1	2.03	0.41
1:G:32:THR:OG1	1:G:222:HIS:HD2	2.04	0.41
1:E:185:ARG:HD2	1:G:192:GLU:OE2	2.20	0.41

Continued on next page...

Continued from previous page...

Atom-1	Atom-2	Interatomic distance (Å)	Clash overlap (Å)
1:B:249:VAL:HG22	1:B:253:LEU:HD12	2.01	0.41
1:D:125:ASP:HB3	1:D:138:HIS:CE1	2.55	0.41
1:D:146:ILE:O	1:D:146:ILE:HG13	2.21	0.41
1:B:40:PRO:HG3	1:B:221:THR:HG22	2.03	0.41
1:E:52:SER:HA	1:E:53:PRO:HD3	1.95	0.41
1:F:52:SER:HA	1:F:53:PRO:HD3	1.96	0.41
1:D:52:SER:HA	1:D:53:PRO:HD3	1.96	0.41
1:A:172:THR:O	1:A:173:SER:HB2	2.20	0.41
1:G:33:LYS:HG3	1:G:34:VAL:N	2.36	0.41
1:D:156:LEU:HD12	1:D:157:ALA:N	2.35	0.41
1:H:41:THR:HA	1:H:42:PRO:HD3	1.94	0.41
1:F:129:ASN:H	1:F:133:ASP:HB2	1.86	0.41
1:A:84:ALA:HA	1:A:85:ASP:HA	1.79	0.41
1:H:123:GLU:OE2	1:H:125:ASP:HB2	2.21	0.41
1:D:40:PRO:HG3	1:D:221:THR:HG22	2.03	0.41
1:C:40:PRO:HG3	1:C:221:THR:HG22	2.03	0.41
1:D:84:ALA:HA	1:D:85:ASP:HA	1.78	0.41
1:G:129:ASN:H	1:G:133:ASP:HB2	1.86	0.41
1:A:129:ASN:H	1:A:133:ASP:HB2	1.86	0.40
1:A:143:VAL:O	1:A:144:ASN:HB2	2.21	0.40
1:F:39:ILE:HG13	1:F:39:ILE:O	2.21	0.40
1:C:134:PRO:HD2	1:C:138:HIS:CE1	2.56	0.40
1:C:180:VAL:HG22	1:C:187:SER:HB3	2.03	0.40
1:A:220:GLU:OE2	1:A:222:HIS:HE1	2.03	0.40
1:B:249:VAL:HA	1:B:253:LEU:HB2	2.02	0.40
1:F:125:ASP:HB3	1:F:138:HIS:CE1	2.56	0.40
1:G:39:ILE:HA	1:G:40:PRO:HD3	1.93	0.40
1:D:39:ILE:HG13	1:D:39:ILE:O	2.20	0.40
1:A:101:ASN:N	1:A:101:ASN:ND2	2.67	0.40
1:C:33:LYS:HG3	1:C:34:VAL:N	2.37	0.40
1:G:143:VAL:O	1:G:144:ASN:HB2	2.21	0.40
1:E:179:LEU:HD23	1:E:179:LEU:C	2.42	0.40
1:D:220:GLU:OE2	1:D:222:HIS:CE1	2.75	0.40
1:A:41:THR:HA	1:A:42:PRO:HD3	1.96	0.40

There are no symmetry-related clashes.

5.3 Torsion angles

5.3.1 Protein backbone

In the following table, the Percentiles column shows the percent Ramachandran outliers of the chain as a percentile score with respect to all X-ray entries followed by that with respect to entries of similar resolution.

The Analysed column shows the number of residues for which the backbone conformation was analysed, and the total number of residues.

Mol	Chain	Analysed	Favoured	Allowed	Outliers	Percentiles	
1	A	247/253 (98%)	231 (94%)	15 (6%)	1 (0%)	39	65
1	B	251/253 (99%)	237 (94%)	13 (5%)	1 (0%)	39	65
1	C	229/253 (90%)	217 (95%)	11 (5%)	1 (0%)	39	65
1	D	229/253 (90%)	218 (95%)	10 (4%)	1 (0%)	39	65
1	E	229/253 (90%)	217 (95%)	11 (5%)	1 (0%)	39	65
1	F	229/253 (90%)	217 (95%)	11 (5%)	1 (0%)	39	65
1	G	247/253 (98%)	230 (93%)	16 (6%)	1 (0%)	39	65
1	H	251/253 (99%)	234 (93%)	16 (6%)	1 (0%)	39	65
All	All	1912/2024 (94%)	1801 (94%)	103 (5%)	8 (0%)	39	65

All (8) Ramachandran outliers are listed below:

Mol	Chain	Res	Type
1	A	96	SER
1	B	96	SER
1	C	96	SER
1	D	96	SER
1	E	96	SER
1	F	96	SER
1	G	96	SER
1	H	96	SER

5.3.2 Protein sidechains

In the following table, the Percentiles column shows the percent sidechain outliers of the chain as a percentile score with respect to all X-ray entries followed by that with respect to entries of similar resolution.

The Analysed column shows the number of residues for which the sidechain conformation was analysed, and the total number of residues.

Mol	Chain	Analysed	Rotameric	Outliers	Percentiles	
1	A	209/214 (98%)	185 (88%)	24 (12%)	7	14
1	B	210/214 (98%)	186 (89%)	24 (11%)	7	14
1	C	195/214 (91%)	173 (89%)	22 (11%)	7	15
1	D	195/214 (91%)	174 (89%)	21 (11%)	8	16
1	E	195/214 (91%)	173 (89%)	22 (11%)	7	15
1	F	195/214 (91%)	173 (89%)	22 (11%)	7	15
1	G	209/214 (98%)	186 (89%)	23 (11%)	8	16
1	H	210/214 (98%)	187 (89%)	23 (11%)	8	16
All	All	1618/1712 (94%)	1437 (89%)	181 (11%)	7	15

All (181) residues with a non-rotameric sidechain are listed below:

Mol	Chain	Res	Type
1	A	9	LYS
1	A	13	SER
1	A	15	SER
1	A	26	SER
1	A	33	LYS
1	A	36	GLU
1	A	41	THR
1	A	43	SER
1	A	60	SER
1	A	74	LYS
1	A	82	SER
1	A	85	ASP
1	A	101	ASN
1	A	110	SER
1	A	128	SER
1	A	130	SER
1	A	145	SER
1	A	148	SER
1	A	152	VAL
1	A	160	GLU
1	A	184	ARG
1	A	196	ILE
1	A	232	LYS
1	A	242	LEU
1	B	9	LYS
1	B	13	SER
1	B	15	SER

Continued on next page...

Continued from previous page...

Mol	Chain	Res	Type
1	B	26	SER
1	B	33	LYS
1	B	36	GLU
1	B	41	THR
1	B	43	SER
1	B	60	SER
1	B	74	LYS
1	B	82	SER
1	B	85	ASP
1	B	101	ASN
1	B	110	SER
1	B	128	SER
1	B	130	SER
1	B	145	SER
1	B	148	SER
1	B	152	VAL
1	B	160	GLU
1	B	184	ARG
1	B	196	ILE
1	B	232	LYS
1	B	242	LEU
1	C	9	LYS
1	C	13	SER
1	C	15	SER
1	C	26	SER
1	C	33	LYS
1	C	36	GLU
1	C	41	THR
1	C	43	SER
1	C	60	SER
1	C	74	LYS
1	C	82	SER
1	C	85	ASP
1	C	101	ASN
1	C	110	SER
1	C	130	SER
1	C	145	SER
1	C	148	SER
1	C	152	VAL
1	C	160	GLU
1	C	184	ARG
1	C	196	ILE

Continued on next page...

Continued from previous page...

Mol	Chain	Res	Type
1	C	232	LYS
1	D	9	LYS
1	D	15	SER
1	D	26	SER
1	D	33	LYS
1	D	36	GLU
1	D	41	THR
1	D	43	SER
1	D	60	SER
1	D	74	LYS
1	D	82	SER
1	D	85	ASP
1	D	101	ASN
1	D	110	SER
1	D	130	SER
1	D	145	SER
1	D	148	SER
1	D	152	VAL
1	D	160	GLU
1	D	184	ARG
1	D	196	ILE
1	D	232	LYS
1	E	9	LYS
1	E	13	SER
1	E	15	SER
1	E	26	SER
1	E	33	LYS
1	E	36	GLU
1	E	41	THR
1	E	43	SER
1	E	60	SER
1	E	74	LYS
1	E	82	SER
1	E	85	ASP
1	E	101	ASN
1	E	110	SER
1	E	130	SER
1	E	145	SER
1	E	148	SER
1	E	152	VAL
1	E	160	GLU
1	E	184	ARG

Continued on next page...

Continued from previous page...

Mol	Chain	Res	Type
1	E	196	ILE
1	E	232	LYS
1	F	9	LYS
1	F	13	SER
1	F	15	SER
1	F	26	SER
1	F	33	LYS
1	F	36	GLU
1	F	41	THR
1	F	43	SER
1	F	60	SER
1	F	74	LYS
1	F	82	SER
1	F	85	ASP
1	F	101	ASN
1	F	110	SER
1	F	130	SER
1	F	145	SER
1	F	148	SER
1	F	152	VAL
1	F	160	GLU
1	F	184	ARG
1	F	196	ILE
1	F	232	LYS
1	G	9	LYS
1	G	13	SER
1	G	15	SER
1	G	26	SER
1	G	33	LYS
1	G	36	GLU
1	G	41	THR
1	G	43	SER
1	G	60	SER
1	G	74	LYS
1	G	82	SER
1	G	85	ASP
1	G	101	ASN
1	G	110	SER
1	G	130	SER
1	G	145	SER
1	G	148	SER
1	G	152	VAL

Continued on next page...

Continued from previous page...

Mol	Chain	Res	Type
1	G	160	GLU
1	G	184	ARG
1	G	196	ILE
1	G	232	LYS
1	G	242	LEU
1	H	9	LYS
1	H	13	SER
1	H	15	SER
1	H	26	SER
1	H	33	LYS
1	H	36	GLU
1	H	41	THR
1	H	43	SER
1	H	60	SER
1	H	74	LYS
1	H	82	SER
1	H	85	ASP
1	H	101	ASN
1	H	110	SER
1	H	130	SER
1	H	145	SER
1	H	148	SER
1	H	152	VAL
1	H	160	GLU
1	H	184	ARG
1	H	196	ILE
1	H	232	LYS
1	H	242	LEU

Some sidechains can be flipped to improve hydrogen bonding and reduce clashes. All (65) such sidechains are listed below:

Mol	Chain	Res	Type
1	A	2	ASN
1	A	30	GLN
1	A	37	ASN
1	A	55	GLN
1	A	101	ASN
1	A	161	ASN
1	A	181	HIS
1	A	222	HIS
1	A	251	ASN
1	B	2	ASN

Continued on next page...

Continued from previous page...

Mol	Chain	Res	Type
1	B	30	GLN
1	B	37	ASN
1	B	55	GLN
1	B	101	ASN
1	B	161	ASN
1	B	181	HIS
1	B	222	HIS
1	B	251	ASN
1	C	2	ASN
1	C	30	GLN
1	C	37	ASN
1	C	55	GLN
1	C	101	ASN
1	C	161	ASN
1	C	181	HIS
1	C	222	HIS
1	D	2	ASN
1	D	30	GLN
1	D	37	ASN
1	D	55	GLN
1	D	101	ASN
1	D	161	ASN
1	D	181	HIS
1	D	222	HIS
1	E	2	ASN
1	E	30	GLN
1	E	37	ASN
1	E	55	GLN
1	E	101	ASN
1	E	161	ASN
1	E	181	HIS
1	E	222	HIS
1	F	2	ASN
1	F	37	ASN
1	F	55	GLN
1	F	101	ASN
1	F	161	ASN
1	F	181	HIS
1	F	222	HIS
1	G	2	ASN
1	G	37	ASN
1	G	55	GLN

Continued on next page...

Continued from previous page...

Mol	Chain	Res	Type
1	G	101	ASN
1	G	161	ASN
1	G	181	HIS
1	G	222	HIS
1	G	251	ASN
1	H	2	ASN
1	H	37	ASN
1	H	55	GLN
1	H	101	ASN
1	H	161	ASN
1	H	181	HIS
1	H	222	HIS
1	H	251	ASN

5.3.3 RNA [i](#)

There are no RNA molecules in this entry.

5.4 Non-standard residues in protein, DNA, RNA chains [i](#)

There are no non-standard protein/DNA/RNA residues in this entry.

5.5 Carbohydrates [i](#)

There are no carbohydrates in this entry.

5.6 Ligand geometry [i](#)

Of 24 ligands modelled in this entry, 16 are monoatomic - leaving 8 for Mogul analysis.

In the following table, the Counts columns list the number of bonds (or angles) for which Mogul statistics could be retrieved, the number of bonds (or angles) that are observed in the model and the number of bonds (or angles) that are defined in the chemical component dictionary. The Link column lists molecule types, if any, to which the group is linked. The Z score for a bond length (or angle) is the number of standard deviations the observed value is removed from the expected value. A bond length (or angle) with $|Z| > 2$ is considered an outlier worth inspection. RMSZ is the root-mean-square of all Z scores of the bond lengths (or angles).

Mol	Type	Chain	Res	Link	Bond lengths			Bond angles		
					Counts	RMSZ	$\# Z > 2$	Counts	RMSZ	$\# Z > 2$
4	ADE	A	601	-	8,11,11	0.95	0	4,15,15	0.75	0

Mol	Type	Chain	Res	Link	Bond lengths			Bond angles		
					Counts	RMSZ	# Z > 2	Counts	RMSZ	# Z > 2
4	ADE	B	601	-	8,11,11	0.92	0	4,15,15	0.74	0
4	ADE	C	601	-	8,11,11	0.92	0	4,15,15	0.96	0
4	ADE	D	601	-	8,11,11	0.94	0	4,15,15	0.99	0
4	ADE	E	601	-	8,11,11	0.90	0	4,15,15	0.90	0
4	ADE	F	601	-	8,11,11	0.86	0	4,15,15	0.91	0
4	ADE	G	601	-	8,11,11	0.89	0	4,15,15	0.91	0
4	ADE	H	601	-	8,11,11	0.89	0	4,15,15	0.88	0

In the following table, the Chirals column lists the number of chiral outliers, the number of chiral centers analysed, the number of these observed in the model and the number defined in the chemical component dictionary. Similar counts are reported in the Torsion and Rings columns. '-' means no outliers of that kind were identified.

Mol	Type	Chain	Res	Link	Chirals	Torsions	Rings
4	ADE	A	601	-	-	0/0/0/0	0/2/2/2
4	ADE	B	601	-	-	0/0/0/0	0/2/2/2
4	ADE	C	601	-	-	0/0/0/0	0/2/2/2
4	ADE	D	601	-	-	0/0/0/0	0/2/2/2
4	ADE	E	601	-	-	0/0/0/0	0/2/2/2
4	ADE	F	601	-	-	0/0/0/0	0/2/2/2
4	ADE	G	601	-	-	0/0/0/0	0/2/2/2
4	ADE	H	601	-	-	0/0/0/0	0/2/2/2

There are no bond length outliers.

There are no bond angle outliers.

There are no chirality outliers.

There are no torsion outliers.

There are no ring outliers.

6 monomers are involved in 6 short contacts:

Mol	Chain	Res	Type	Clashes	Symm-Clashes
4	A	601	ADE	1	0
4	B	601	ADE	1	0
4	C	601	ADE	1	0
4	E	601	ADE	1	0
4	F	601	ADE	1	0
4	G	601	ADE	1	0

5.7 Other polymers

There are no such residues in this entry.

5.8 Polymer linkage issues

There are no chain breaks in this entry.

6 Fit of model and data ⓘ

6.1 Protein, DNA and RNA chains ⓘ

In the following table, the column labelled ‘#RSRZ > 2’ contains the number (and percentage) of RSRZ outliers, followed by percent RSRZ outliers for the chain as percentile scores relative to all X-ray entries and entries of similar resolution. The OWAB column contains the minimum, median, 95th percentile and maximum values of the occupancy-weighted average B-factor per residue. The column labelled ‘Q < 0.9’ lists the number of (and percentage) of residues with an average occupancy less than 0.9.

Mol	Chain	Analysed	<RSRZ>	#RSRZ > 2	OWAB(Å ²)	Q < 0.9
1	A	251/253 (99%)	-0.30	6 (2%) 62 60	3, 18, 49, 68	0
1	B	253/253 (100%)	-0.25	5 (1%) 68 67	4, 19, 51, 70	0
1	C	233/253 (92%)	-0.30	2 (0%) 85 86	3, 19, 37, 67	0
1	D	233/253 (92%)	-0.44	2 (0%) 85 86	3, 17, 37, 68	0
1	E	233/253 (92%)	-0.12	7 (3%) 54 52	14, 27, 46, 69	0
1	F	233/253 (92%)	0.30	11 (4%) 35 33	12, 32, 50, 76	0
1	G	251/253 (99%)	0.47	21 (8%) 14 11	12, 37, 57, 78	0
1	H	253/253 (100%)	-0.00	14 (5%) 29 26	12, 26, 56, 72	0
All	All	1940/2024 (95%)	-0.08	68 (3%) 48 46	3, 24, 51, 78	0

All (68) RSRZ outliers are listed below:

Mol	Chain	Res	Type	RSRZ
1	H	249	VAL	5.6
1	F	136	MET	5.4
1	F	36	GLU	5.3
1	G	218	TYR	5.2
1	H	238	THR	4.7
1	H	246	SER	4.4
1	G	36	GLU	4.4
1	F	37	ASN	4.4
1	H	237	SER	4.2
1	C	136	MET	4.1
1	G	38	GLY	4.1
1	E	136	MET	3.8
1	G	110	SER	3.7
1	B	36	GLU	3.7
1	H	252	VAL	3.4
1	G	111	ASP	3.3

Continued on next page...

Continued from previous page...

Mol	Chain	Res	Type	RSRZ
1	G	37	ASN	3.3
1	F	35	LYS	3.2
1	H	239	ALA	3.2
1	H	236	ASP	3.1
1	A	237	SER	3.1
1	C	36	GLU	3.1
1	F	135	SER	3.1
1	G	129	ASN	3.1
1	G	82	SER	3.1
1	D	36	GLU	3.1
1	A	239	ALA	3.0
1	A	36	GLU	2.9
1	E	235	ASP	2.9
1	G	130	SER	2.7
1	E	36	GLU	2.7
1	H	240	GLU	2.7
1	F	13	SER	2.6
1	A	238	THR	2.6
1	H	244	LEU	2.6
1	H	250	ARG	2.6
1	G	116	SER	2.6
1	G	213	GLY	2.5
1	A	240	GLU	2.4
1	D	26	SER	2.4
1	E	26	SER	2.4
1	E	38	GLY	2.4
1	G	238	THR	2.4
1	F	109	ASP	2.4
1	F	26	SER	2.4
1	G	219	ILE	2.4
1	A	251	ASN	2.3
1	G	34	VAL	2.3
1	E	135	SER	2.3
1	F	62	GLY	2.2
1	G	43	SER	2.2
1	G	109	ASP	2.2
1	B	37	ASN	2.2
1	G	239	ALA	2.2
1	E	114	ASN	2.2
1	H	248	LEU	2.1
1	B	216	GLU	2.1
1	H	36	GLU	2.1

Continued on next page...

Continued from previous page...

Mol	Chain	Res	Type	RSRZ
1	B	237	SER	2.1
1	G	212	THR	2.1
1	B	218	TYR	2.1
1	F	82	SER	2.1
1	H	37	ASN	2.1
1	F	39	ILE	2.1
1	H	241	PRO	2.0
1	G	235	ASP	2.0
1	G	237	SER	2.0
1	G	95	GLY	2.0

6.2 Non-standard residues in protein, DNA, RNA chains [i](#)

There are no non-standard protein/DNA/RNA residues in this entry.

6.3 Carbohydrates [i](#)

There are no carbohydrates in this entry.

6.4 Ligands [i](#)

In the following table, the Atoms column lists the number of modelled atoms in the group and the number defined in the chemical component dictionary. LLDF column lists the quality of electron density of the group with respect to its neighbouring residues in protein, DNA or RNA chains. The B-factors column lists the minimum, median, 95th percentile and maximum values of B factors of atoms in the group. The column labelled 'Q< 0.9' lists the number of atoms with occupancy less than 0.9.

Mol	Type	Chain	Res	Atoms	RSCC	RSR	LLDF	B-factors(Å ²)	Q<0.9
4	ADE	A	601	10/10	0.94	0.39	6.94	2,2,2,2	10
4	ADE	G	601	10/10	0.94	0.33	6.49	2,2,2,2	10
4	ADE	E	601	10/10	0.90	0.33	5.94	6,7,8,9	10
4	ADE	C	601	10/10	0.89	0.30	5.65	2,2,3,5	10
4	ADE	H	601	10/10	0.88	0.42	3.77	2,2,2,2	10
4	ADE	B	601	10/10	0.93	0.34	3.75	2,2,2,2	10
4	ADE	D	601	10/10	0.91	0.32	3.37	2,2,2,2	10
4	ADE	F	601	10/10	0.84	0.34	2.83	6,7,7,8	10
2	CA	A	301	1/1	0.95	0.15	1.05	12,12,12,12	0
2	CA	B	301	1/1	0.95	0.12	-0.94	19,19,19,19	0
2	CA	H	301	1/1	0.88	0.10	-1.05	29,29,29,29	0

Continued on next page...

Continued from previous page...

Mol	Type	Chain	Res	Atoms	RSCC	RSR	LLDF	B-factors(\AA^2)	Q<0.9
3	MN	D	302	1/1	0.81	0.08	-1.21	46,46,46,46	0
2	CA	F	301	1/1	0.77	0.15	-1.34	36,36,36,36	0
3	MN	H	302	1/1	0.94	0.09	-1.52	45,45,45,45	0
2	CA	E	301	1/1	0.95	0.10	-1.53	28,28,28,28	0
3	MN	A	302	1/1	0.94	0.08	-1.71	45,45,45,45	0
2	CA	D	301	1/1	0.94	0.08	-1.78	11,11,11,11	0
3	MN	F	302	1/1	0.91	0.10	-1.95	63,63,63,63	0
2	CA	C	301	1/1	0.92	0.11	-2.02	19,19,19,19	0
3	MN	B	302	1/1	0.96	0.07	-2.08	46,46,46,46	0
2	CA	G	301	1/1	0.89	0.08	-2.61	59,59,59,59	0
3	MN	G	302	1/1	0.78	0.11	-2.65	67,67,67,67	0
3	MN	E	302	1/1	0.92	0.07	-2.80	52,52,52,52	0
3	MN	C	302	1/1	0.96	0.07	-3.08	41,41,41,41	0

6.5 Other polymers [i](#)

There are no such residues in this entry.