



Full wwPDB X-ray Structure Validation Report ⓘ

Feb 1, 2016 – 12:46 AM GMT

PDB ID : 2BJH
Title : CRYSTAL STRUCTURE OF S133A ANFAEA-FERULIC ACID COMPLEX
Authors : Faulds, C.B.; Molina, R.; Gonzalez, R.; Husband, F.; Juge, N.; Sanz-Aparicio, J.; Hermoso, J.A.
Deposited on : 2005-02-02
Resolution : 2.54 Å(reported)

This is a Full wwPDB X-ray Structure Validation Report for a publicly released PDB entry.
We welcome your comments at validation@mail.wwpdb.org
A user guide is available at
<http://wwpdb.org/validation/2016/XrayValidationReportHelp>
with specific help available everywhere you see the ⓘ symbol.

The following versions of software and data (see [references ⓘ](#)) were used in the production of this report:

MolProbity : 4.02b-467
Mogul : 1.7 (RC4), CSD as536be (2015)
Xtriage (Phenix) : 1.9-1692
EDS : rb-20026688
Percentile statistics : 20151230.v01 (using entries in the PDB archive December 30th 2015)
Refmac : 5.8.0135
CCP4 : 6.5.0
Ideal geometry (proteins) : Engh & Huber (2001)
Ideal geometry (DNA, RNA) : Parkinson et al. (1996)
Validation Pipeline (wwPDB-VP) : trunk26865

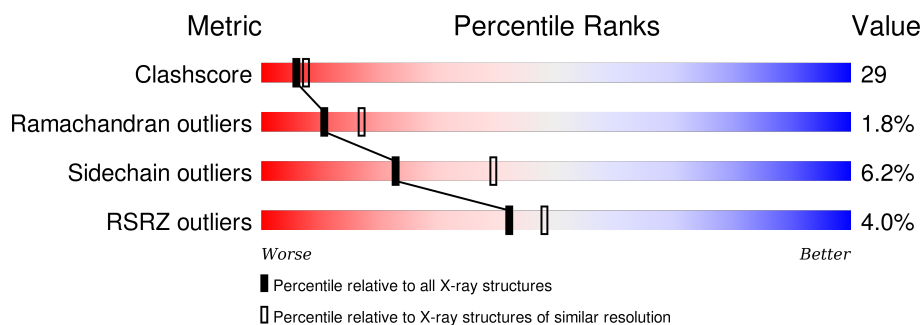
1 Overall quality at a glance

The following experimental techniques were used to determine the structure:

X-RAY DIFFRACTION

The reported resolution of this entry is 2.54 Å.

Percentile scores (ranging between 0-100) for global validation metrics of the entry are shown in the following graphic. The table shows the number of entries on which the scores are based.



Metric	Whole archive (#Entries)	Similar resolution (#Entries, resolution range(Å))
Clashscore	102246	5292 (2.58-2.50)
Ramachandran outliers	100387	5194 (2.58-2.50)
Sidechain outliers	100360	5196 (2.58-2.50)
RSRZ outliers	91569	4561 (2.58-2.50)

The table below summarises the geometric issues observed across the polymeric chains and their fit to the electron density. The red, orange, yellow and green segments on the lower bar indicate the fraction of residues that contain outliers for ≥ 3 , 2, 1 and 0 types of geometric quality criteria. A grey segment represents the fraction of residues that are not modelled. The numeric value for each fraction is indicated below the corresponding segment, with a dot representing fractions $\leq 5\%$. The upper red bar (where present) indicates the fraction of residues that have poor fit to the electron density. The numeric value is given above the bar.

Mol	Chain	Length	Quality of chain
1	A	260	
1	B	260	
1	C	260	

The following table lists non-polymeric compounds, carbohydrate monomers and non-standard residues in protein, DNA, RNA chains that are outliers for geometric or electron-density-fit criteria:

Mol	Type	Chain	Res	Chirality	Geometry	Clashes	Electron density
2	NAG	A	900	-	-	X	-
2	NAG	C	900	-	-	X	-
3	NDG	A	901	-	-	-	X
3	NDG	B	901	-	-	-	X
3	NDG	C	901	-	-	-	X
4	FER	A	908	-	-	-	X
4	FER	B	908	-	-	-	X
4	FER	C	908	-	-	X	X

2 Entry composition [i](#)

There are 5 unique types of molecules in this entry. The entry contains 6478 atoms, of which 0 are hydrogens and 0 are deuteriums.

In the tables below, the ZeroOcc column contains the number of atoms modelled with zero occupancy, the AltConf column contains the number of residues with at least one atom in alternate conformation and the Trace column contains the number of residues modelled with at most 2 atoms.

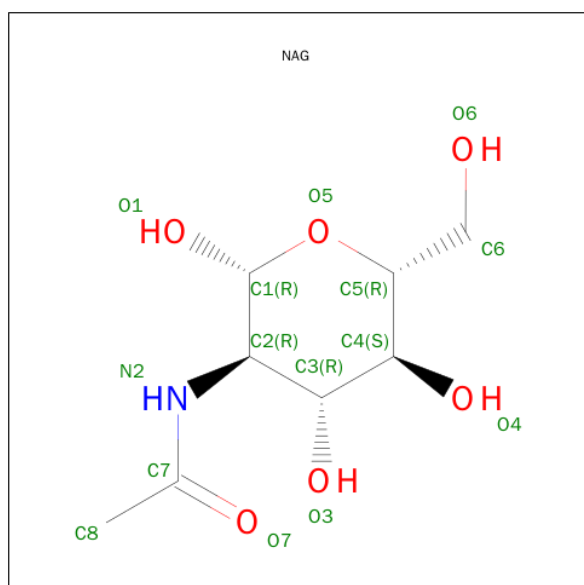
- Molecule 1 is a protein called FERULOYL ESTERASE A.

Mol	Chain	Residues	Atoms					ZeroOcc	AltConf	Trace
1	A	260	Total	C	N	O	S	0	0	0
			1991	1239	328	413	11			
1	B	260	Total	C	N	O	S	0	0	0
			1991	1239	328	413	11			
1	C	260	Total	C	N	O	S	0	0	0
			1991	1239	328	413	11			

There are 3 discrepancies between the modelled and reference sequences:

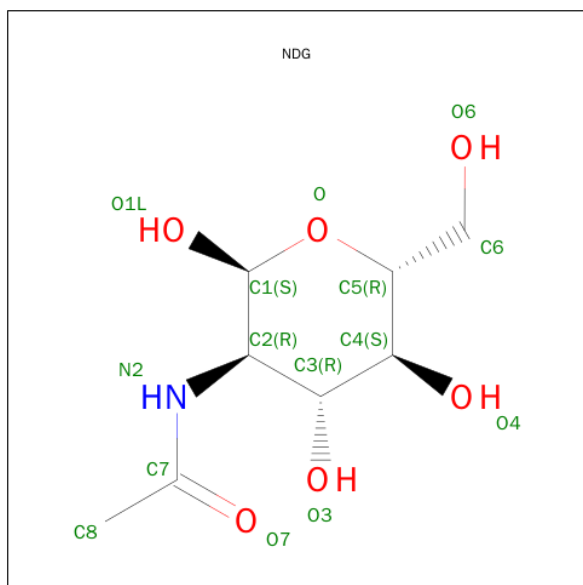
Chain	Residue	Modelled	Actual	Comment	Reference
A	133	ALA	SER	ENGINEERED MUTATION	UNP O42807
B	133	ALA	SER	ENGINEERED MUTATION	UNP O42807
C	133	ALA	SER	ENGINEERED MUTATION	UNP O42807

- Molecule 2 is SUGAR (N-ACETYL-D-GLUCOSAMINE) (three-letter code: NAG) (formula: $C_8H_{15}NO_6$).



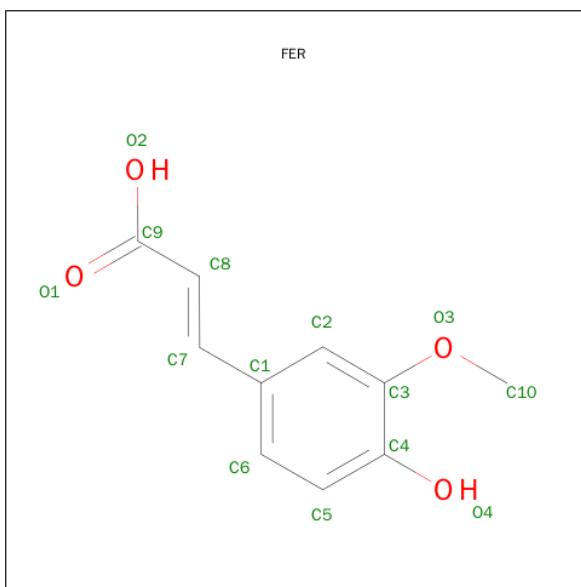
Mol	Chain	Residues	Atoms				ZeroOcc	AltConf
2	A	1	Total	C	N	O	0	0
			15	8	1	6		
2	B	1	Total	C	N	O	0	0
			15	8	1	6		
2	C	1	Total	C	N	O	0	0
			15	8	1	6		

- Molecule 3 is SUGAR (2-(ACETYLAMINO)-2-DEOXY-A-D-GLUCOPYRANOSE) (three-letter code: NDG) (formula: $C_8H_{15}NO_6$).



Mol	Chain	Residues	Atoms				ZeroOcc	AltConf
3	A	1	Total	C	N	O	0	0
			15	8	1	6		
3	B	1	Total	C	N	O	0	0
			15	8	1	6		
3	C	1	Total	C	N	O	0	0
			15	8	1	6		

- Molecule 4 is 3-(4-HYDROXY-3-METHOXYPHENYL)-2-PROPENOIC ACID (three-letter code: FER) (formula: $C_{10}H_{10}O_4$).



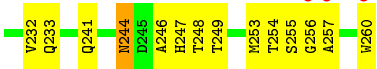
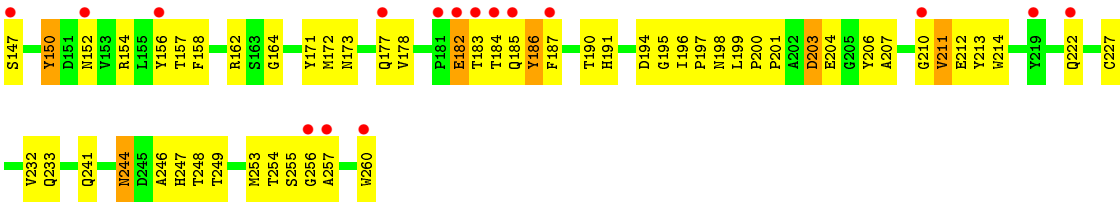
Mol	Chain	Residues	Atoms			ZeroOcc	AltConf
4	A	1	Total	C	O	0	0
			14	10	4		
4	B	1	Total	C	O	0	0
			14	10	4		
4	C	1	Total	C	O	0	0
			14	10	4		

- Molecule 5 is water.

Mol	Chain	Residues	Atoms		ZeroOcc	AltConf
5	A	157	Total	O	0	0
			157	157		
5	B	139	Total	O	0	0
			139	139		
5	C	77	Total	O	0	0
			77	77		

● Molecule 1: FERULOYL ESTERASE A





4 Data and refinement statistics

Property	Value	Source
Space group	P 1 21 1	Depositor
Cell constants a, b, c, α , β , γ	46.75Å 130.75Å 76.50Å 90.00° 98.14° 90.00°	Depositor
Resolution (Å)	49.49 – 2.54 49.49 – 2.40	Depositor EDS
% Data completeness (in resolution range)	98.3 (49.49-2.54) 98.4 (49.49-2.40)	Depositor EDS
R_{merge}	0.20	Depositor
R_{sym}	(Not available)	Depositor
$\langle I/\sigma(I) \rangle$ ¹	2.10 (at 2.39Å)	Xtriage
Refinement program	CNS 1.0	Depositor
R, R_{free}	0.216 , 0.277 0.219 , (Not available)	Depositor DCC
R_{free} test set	No test flags present.	DCC
Wilson B-factor (Å ²)	23.8	Xtriage
Anisotropy	0.733	Xtriage
Bulk solvent k_{sol} (e/Å ³), B_{sol} (Å ²)	0.36 , 54.9	EDS
Estimated twinning fraction	No twinning to report.	Xtriage
L-test for twinning ²	$\langle L \rangle = 0.47$, $\langle L^2 \rangle = 0.29$	Xtriage
Outliers	0 of 35000 reflections	Xtriage
F_o, F_c correlation	0.91	EDS
Total number of atoms	6478	wwPDB-VP
Average B, all atoms (Å ²)	29.0	wwPDB-VP

Xtriage's analysis on translational NCS is as follows: *The largest off-origin peak in the Patterson function is 5.95% of the height of the origin peak. No significant pseudotranslation is detected.*

¹Intensities estimated from amplitudes.

²Theoretical values of $\langle |L| \rangle$, $\langle L^2 \rangle$ for acentric reflections are 0.5, 0.375 respectively for untwinned datasets, and 0.333, 0.2 for perfectly twinned datasets.

5 Model quality [i](#)

5.1 Standard geometry [i](#)

Bond lengths and bond angles in the following residue types are not validated in this section: FER, NAG, NDG

The Z score for a bond length (or angle) is the number of standard deviations the observed value is removed from the expected value. A bond length (or angle) with $|Z| > 5$ is considered an outlier worth inspection. RMSZ is the root-mean-square of all Z scores of the bond lengths (or angles).

Mol	Chain	Bond lengths		Bond angles	
		RMSZ	# Z >5	RMSZ	# Z >5
1	A	0.38	0/2037	0.64	0/2784
1	B	0.37	0/2037	0.64	0/2784
1	C	0.33	0/2037	0.60	0/2784
All	All	0.36	0/6111	0.63	0/8352

There are no bond length outliers.

There are no bond angle outliers.

There are no chirality outliers.

There are no planarity outliers.

5.2 Too-close contacts [i](#)

In the following table, the Non-H and H(model) columns list the number of non-hydrogen atoms and hydrogen atoms in the chain respectively. The H(added) column lists the number of hydrogen atoms added and optimized by MolProbity. The Clashes column lists the number of clashes within the asymmetric unit, whereas Symm-Clashes lists symmetry related clashes.

Mol	Chain	Non-H	H(model)	H(added)	Clashes	Symm-Clashes
1	A	1991	0	1836	93	0
1	B	1991	0	1836	110	0
1	C	1991	0	1836	118	0
2	A	15	0	15	7	0
2	B	15	0	15	6	0
2	C	15	0	15	8	0
3	A	15	0	15	5	0
3	B	15	0	15	3	0
3	C	15	0	15	6	0
4	A	14	0	9	0	0

Continued on next page...

Continued from previous page...

Mol	Chain	Non-H	H(model)	H(added)	Clashes	Symm-Clashes
4	B	14	0	9	1	0
4	C	14	0	9	8	0
5	A	157	0	0	6	0
5	B	139	0	0	2	0
5	C	77	0	0	8	0
All	All	6478	0	5625	335	0

The all-atom clashscore is defined as the number of clashes found per 1000 atoms (including hydrogen atoms). The all-atom clashscore for this structure is 29.

All (335) close contacts within the same asymmetric unit are listed below, sorted by their clash magnitude.

Atom-1	Atom-2	Interatomic distance (Å)	Clash overlap (Å)
2:B:900:NAG:O4	3:B:901:NDG:H1	1.31	1.30
2:A:900:NAG:O4	3:A:901:NDG:H1	1.31	1.29
1:A:35:ILE:HD11	1:A:53:LEU:HB3	1.30	1.11
1:C:212:GLU:HB3	1:C:227:CYS:HB2	1.46	0.98
1:A:42:TYR:H	1:A:110:GLN:HE22	1.00	0.93
1:A:184:THR:HG22	1:A:186:TYR:H	1.32	0.91
1:B:184:THR:HG22	1:B:186:TYR:H	1.34	0.91
3:C:901:NDG:H4	5:C:2077:HOH:O	1.72	0.89
1:A:42:TYR:N	1:A:110:GLN:HE22	1.71	0.88
1:B:184:THR:HG21	1:B:211:VAL:HG12	1.53	0.88
1:B:42:TYR:H	1:B:110:GLN:HE22	1.20	0.88
1:A:90:GLN:NE2	1:A:90:GLN:H	1.72	0.87
1:A:42:TYR:H	1:A:110:GLN:NE2	1.74	0.84
1:A:39:GLU:HG2	1:A:114:LEU:HD22	1.58	0.84
1:B:152:ASN:HD22	1:B:152:ASN:H	1.23	0.82
1:A:22:GLN:HA	1:A:22:GLN:HE21	1.42	0.82
1:C:96:VAL:HA	1:C:164:GLY:HA2	1.61	0.82
1:A:1:ALA:HB3	1:A:233:GLN:HE22	1.43	0.82
1:B:201:PRO:HG2	1:B:204:GLU:HG3	1.62	0.81
2:B:900:NAG:O4	3:B:901:NDG:C1	2.24	0.80
1:C:184:THR:HG22	1:C:186:TYR:H	1.48	0.78
1:C:184:THR:HG21	1:C:211:VAL:HG12	1.65	0.78
1:B:31:ILE:HD12	1:B:35:ILE:HD12	1.65	0.77
1:B:184:THR:HG21	1:B:211:VAL:CG1	2.16	0.75
1:B:152:ASN:ND2	1:B:152:ASN:H	1.84	0.74
1:A:212:GLU:HB3	1:A:227:CYS:HB2	1.70	0.73
1:A:191:HIS:HD2	1:A:246:ALA:O	1.71	0.73
1:A:89:PRO:HD2	1:A:90:GLN:HE22	1.55	0.72

Continued on next page...

Continued from previous page...

Atom-1	Atom-2	Interatomic distance (Å)	Clash overlap (Å)
1:A:90:GLN:HE21	1:A:90:GLN:H	1.36	0.72
1:C:39:GLU:HB3	1:C:52:ILE:HD13	1.72	0.72
1:B:42:TYR:H	1:B:110:GLN:NE2	1.87	0.72
1:A:79:ASN:CG	2:A:900:NAG:O1	2.29	0.71
1:C:88:LEU:HD12	1:C:90:GLN:NE2	2.05	0.71
1:A:193:ASN:H	1:A:193:ASN:HD22	1.40	0.69
2:A:900:NAG:C4	3:A:901:NDG:H1	2.23	0.69
1:A:1:ALA:CB	1:A:233:GLN:HE22	2.05	0.69
1:B:39:GLU:HG2	1:B:114:LEU:HD22	1.74	0.68
1:B:152:ASN:HD22	1:B:152:ASN:N	1.84	0.68
2:C:900:NAG:H61	3:C:901:NDG:HA	1.57	0.68
1:B:191:HIS:HD2	1:B:246:ALA:O	1.77	0.68
1:B:103:GLY:O	1:B:106:SER:HB3	1.92	0.68
1:A:179:SER:HB2	5:A:2121:HOH:O	1.94	0.67
1:A:134:LEU:HD12	1:A:134:LEU:C	2.14	0.67
1:C:46:THR:OG1	1:C:48:ILE:HG12	1.95	0.67
1:C:8:GLU:HG2	5:C:2008:HOH:O	1.94	0.67
1:C:17:MET:HE3	1:C:130:THR:HG21	1.77	0.67
1:A:1:ALA:HB1	1:A:228:THR:O	1.94	0.66
1:B:100:TYR:CE2	1:B:134:LEU:HD22	2.30	0.66
1:B:17:MET:HE3	1:B:130:THR:HG21	1.76	0.66
1:C:196:ILE:HG23	4:C:908:FER:H2	1.76	0.66
1:A:184:THR:HG21	1:A:211:VAL:HG13	1.77	0.66
1:A:32:PRO:O	1:A:35:ILE:HG22	1.95	0.65
1:C:46:THR:HB	1:C:76:LEU:HD11	1.78	0.65
1:A:39:GLU:HG2	1:A:114:LEU:CD2	2.26	0.65
1:A:161:PRO:HG3	1:A:196:ILE:CG2	2.27	0.65
1:C:201:PRO:HG2	1:C:204:GLU:HB2	1.76	0.65
1:B:193:ASN:H	1:B:193:ASN:HD22	1.43	0.65
1:B:35:ILE:HD11	1:B:53:LEU:HD22	1.78	0.64
1:B:248:THR:O	1:B:254:THR:HA	1.98	0.64
1:B:177:GLN:HE21	1:B:185:GLN:CD	2.01	0.64
1:C:52:ILE:N	1:C:52:ILE:HD12	2.12	0.64
1:B:133:ALA:HB2	1:B:247:HIS:HE1	1.64	0.63
1:B:193:ASN:O	1:B:240:GLY:HA3	1.98	0.62
1:C:31:ILE:HD12	1:C:35:ILE:HD12	1.80	0.62
1:C:134:LEU:HD12	1:C:135:GLY:N	2.13	0.62
1:C:136:ALA:HB1	1:C:157:THR:HB	1.81	0.62
1:B:88:LEU:HD21	1:B:171:TYR:CZ	2.34	0.62
1:B:40:LYS:HG3	1:B:50:GLY:O	1.99	0.62
1:C:154:ARG:HH11	1:C:154:ARG:HG3	1.65	0.62

Continued on next page...

Continued from previous page...

Atom-1	Atom-2	Interatomic distance (Å)	Clash overlap (Å)
1:A:201:PRO:HA	5:A:2132:HOH:O	2.00	0.62
1:C:196:ILE:HD12	4:C:908:FER:H2	1.82	0.61
2:A:900:NAG:O4	3:A:901:NDG:C1	2.27	0.61
1:C:79:ASN:CG	2:C:900:NAG:O1	2.39	0.61
1:C:196:ILE:HD12	4:C:908:FER:C2	2.30	0.61
1:C:77:ASP:HB3	4:C:908:FER:H5	1.83	0.61
1:B:129:VAL:HG12	1:B:139:ALA:HB1	1.82	0.61
1:C:61:ILE:HD13	1:C:118:GLN:HB3	1.81	0.61
1:B:35:ILE:C	1:B:35:ILE:HD13	2.21	0.60
1:C:199:LEU:O	4:C:908:FER:H101	2.02	0.60
1:C:10:LEU:O	1:C:14:LEU:HG	2.01	0.60
1:C:40:LYS:HE2	1:C:42:TYR:HB2	1.82	0.60
1:B:10:LEU:O	1:B:14:LEU:HG	2.02	0.60
1:C:52:ILE:HD11	1:C:114:LEU:HD13	1.82	0.59
1:B:13:ARG:HD3	1:B:156:TYR:OH	2.02	0.59
1:A:152:ASN:ND2	1:A:152:ASN:H	1.99	0.59
1:C:222:GLN:HB2	5:C:2061:HOH:O	2.02	0.59
1:B:76:LEU:O	1:B:99:GLY:HA3	2.03	0.59
1:C:61:ILE:HD13	1:C:118:GLN:CB	2.33	0.59
1:A:9:ASP:HA	5:A:2015:HOH:O	2.02	0.59
1:C:79:ASN:ND2	2:C:900:NAG:O1	2.36	0.58
1:B:244:ASN:H	1:B:244:ASN:ND2	1.99	0.58
1:A:22:GLN:HA	1:A:22:GLN:NE2	2.17	0.58
1:B:32:PRO:HB2	1:B:35:ILE:HG22	1.84	0.58
1:C:173:ASN:HA	1:C:178:VAL:CG2	2.34	0.57
1:B:3:THR:CG2	1:B:226:VAL:HB	2.34	0.57
1:B:3:THR:HG22	1:B:226:VAL:HB	1.86	0.57
1:B:181:PRO:HG3	1:B:228:THR:HG21	1.86	0.57
1:B:133:ALA:HB2	1:B:247:HIS:CE1	2.39	0.57
1:C:74:LEU:HA	1:C:77:ASP:HB2	1.85	0.57
2:A:900:NAG:HO4	3:A:901:NDG:H1	1.64	0.57
1:C:79:ASN:CG	2:C:900:NAG:HO1	2.09	0.57
1:B:200:PRO:HG2	1:B:206:TYR:CG	2.39	0.56
1:A:41:ILE:HG23	1:A:110:GLN:HE21	1.70	0.56
1:A:69:GLY:H	1:A:73:ASN:HD22	1.52	0.56
1:A:75:GLN:HB2	5:A:2067:HOH:O	2.05	0.56
1:C:195:GLY:O	1:C:241:GLN:O	2.23	0.56
2:C:900:NAG:H62	3:C:901:NDG:H8C1	1.88	0.56
1:A:194:ASP:OD1	1:A:247:HIS:HB2	2.04	0.56
1:C:69:GLY:H	1:C:73:ASN:HD22	1.54	0.56
1:C:177:GLN:HB2	1:C:183:THR:O	2.05	0.56

Continued on next page...

Continued from previous page...

Atom-1	Atom-2	Interatomic distance (Å)	Clash overlap (Å)
1:A:244:ASN:C	1:A:244:ASN:HD22	2.07	0.56
1:B:25:TYR:OH	1:B:67:GLY:HA3	2.05	0.56
1:C:23:ALA:HB1	1:C:29:CYS:N	2.21	0.56
2:C:900:NAG:C6	3:C:901:NDG:HA	2.19	0.55
1:C:130:THR:HA	1:C:156:TYR:O	2.05	0.55
1:A:193:ASN:O	1:A:240:GLY:HA3	2.05	0.55
1:B:80:TYR:CD1	1:B:200:PRO:HB3	2.41	0.55
1:A:184:THR:HG22	1:A:186:TYR:N	2.13	0.55
1:C:191:HIS:CD2	1:C:246:ALA:O	2.59	0.55
1:C:211:VAL:HG13	1:C:213:TYR:HE1	1.72	0.55
1:B:79:ASN:CG	2:B:900:NAG:O1	2.45	0.55
1:C:244:ASN:C	1:C:244:ASN:HD22	2.11	0.55
1:A:154:ARG:HG3	5:A:2107:HOH:O	2.07	0.55
1:B:211:VAL:HG13	1:B:213:TYR:HE1	1.72	0.54
1:C:35:ILE:O	1:C:35:ILE:HD13	2.07	0.54
1:C:200:PRO:HG2	1:C:206:TYR:CG	2.42	0.54
1:A:89:PRO:HD2	1:A:90:GLN:NE2	2.22	0.54
1:C:191:HIS:HD2	1:C:246:ALA:O	1.91	0.54
1:A:200:PRO:HG2	1:A:206:TYR:CG	2.43	0.54
1:C:62:ILE:HA	1:C:128:THR:O	2.07	0.54
2:C:900:NAG:O4	3:C:901:NDG:C7	2.55	0.54
1:B:161:PRO:HG3	1:B:196:ILE:CG2	2.38	0.54
1:B:144:ALA:HB2	1:B:172:MET:SD	2.48	0.54
1:B:157:THR:HB	1:B:160:GLU:HB2	1.89	0.54
1:B:42:TYR:N	1:B:110:GLN:HE22	1.99	0.53
1:C:52:ILE:CD1	1:C:114:LEU:HD13	2.36	0.53
1:A:133:ALA:HB2	1:A:247:HIS:HE1	1.73	0.53
1:C:134:LEU:HD12	1:C:134:LEU:C	2.29	0.53
1:B:68:THR:HA	1:B:73:ASN:HD22	1.73	0.53
1:B:69:GLY:H	1:B:73:ASN:HD22	1.55	0.53
1:C:248:THR:O	1:C:254:THR:HA	2.08	0.53
1:C:10:LEU:HD11	1:C:187:PHE:CE2	2.43	0.53
1:A:28:LEU:HD12	1:A:37:LYS:HE3	1.90	0.53
1:C:90:GLN:H	1:C:90:GLN:NE2	2.07	0.53
1:B:67:GLY:HA2	1:B:135:GLY:H	1.73	0.53
1:C:196:ILE:HG23	4:C:908:FER:H103	1.91	0.53
1:B:4:GLN:HB2	1:B:225:PHE:CE2	2.44	0.53
1:C:31:ILE:HB	1:C:32:PRO:HD2	1.90	0.53
1:A:133:ALA:HB2	1:A:247:HIS:CE1	2.44	0.52
1:C:25:TYR:HA	1:C:66:ARG:HG3	1.90	0.52
1:B:173:ASN:HB3	1:B:178:VAL:HB	1.90	0.52

Continued on next page...

Continued from previous page...

Atom-1	Atom-2	Interatomic distance (Å)	Clash overlap (Å)
1:C:201:PRO:HB2	1:C:203:ASP:OD1	2.09	0.52
1:A:166:GLN:HB2	5:A:2112:HOH:O	2.08	0.52
1:A:88:LEU:C	1:A:90:GLN:HE21	2.13	0.52
1:A:1:ALA:HB3	1:A:233:GLN:NE2	2.20	0.52
1:C:36:ILE:N	1:C:36:ILE:HD12	2.24	0.52
1:B:84:PRO:HB2	1:B:86:ASP:OD1	2.09	0.52
1:C:107:VAL:O	1:C:111:VAL:HG23	2.09	0.52
1:A:111:VAL:O	1:A:115:VAL:HG23	2.09	0.52
1:C:41:ILE:HA	1:C:110:GLN:OE1	2.10	0.52
1:A:95:GLU:HB2	1:A:165:ASN:ND2	2.25	0.52
1:A:41:ILE:HD13	1:A:111:VAL:HG22	1.92	0.52
1:C:37:LYS:HA	1:C:53:LEU:HD22	1.91	0.52
1:C:88:LEU:HD21	1:C:171:TYR:CZ	2.44	0.52
1:A:177:GLN:HE21	1:A:185:GLN:NE2	2.08	0.51
1:C:11:TYR:O	1:C:15:VAL:HG23	2.11	0.51
1:A:90:GLN:HE21	1:A:90:GLN:N	2.06	0.51
1:C:29:CYS:O	1:C:31:ILE:N	2.44	0.51
1:C:35:ILE:HD11	1:C:53:LEU:HD13	1.92	0.51
1:C:178:VAL:HG21	1:C:210:GLY:HA2	1.92	0.51
1:A:136:ALA:HB1	1:A:157:THR:HB	1.92	0.51
1:B:154:ARG:CD	1:B:185:GLN:HB3	2.40	0.51
1:C:196:ILE:HG23	4:C:908:FER:C10	2.41	0.51
1:B:196:ILE:HD11	1:B:243:VAL:CG2	2.41	0.51
1:A:178:VAL:HG13	1:A:211:VAL:HG12	1.93	0.51
1:C:40:LYS:HG3	5:C:2025:HOH:O	2.10	0.50
1:B:177:GLN:HE21	1:B:185:GLN:NE2	2.10	0.50
1:C:35:ILE:HD13	1:C:35:ILE:C	2.32	0.50
1:A:129:VAL:HG12	1:A:139:ALA:HB1	1.93	0.50
1:B:31:ILE:HB	1:B:32:PRO:HD2	1.94	0.50
1:B:191:HIS:HE1	1:B:217:ASP:OD2	1.95	0.50
1:B:17:MET:HE3	1:B:130:THR:CG2	2.42	0.50
1:A:243:VAL:HG13	1:A:247:HIS:HD2	1.77	0.50
1:B:173:ASN:HA	1:B:178:VAL:CG2	2.41	0.50
1:C:178:VAL:CG2	1:C:210:GLY:HA2	2.42	0.50
1:C:191:HIS:CD2	1:C:249:THR:O	2.65	0.50
1:A:83:THR:HB	2:A:900:NAG:H62	1.94	0.50
1:C:40:LYS:HE3	5:C:2025:HOH:O	2.11	0.50
1:A:137:SER:OG	1:A:161:PRO:HD2	2.12	0.49
1:B:212:GLU:HB3	1:B:227:CYS:HB2	1.94	0.49
1:C:184:THR:HG21	1:C:211:VAL:CG1	2.38	0.49
1:B:83:THR:O	1:B:95:GLU:HA	2.13	0.49

Continued on next page...

Continued from previous page...

Atom-1	Atom-2	Interatomic distance (Å)	Clash overlap (Å)
1:C:88:LEU:HD12	1:C:90:GLN:HE21	1.74	0.49
1:A:134:LEU:HD12	1:A:134:LEU:O	2.13	0.49
1:B:193:ASN:HD22	1:B:193:ASN:N	2.04	0.49
1:B:196:ILE:HD11	1:B:243:VAL:HG23	1.94	0.48
1:C:162:ARG:NH1	1:C:198:ASN:O	2.44	0.48
1:B:79:ASN:ND2	2:B:900:NAG:H1	2.29	0.48
2:A:900:NAG:H61	3:A:901:NDG:O1L	2.14	0.48
1:C:80:TYR:CD1	1:C:200:PRO:HB3	2.48	0.48
1:B:29:CYS:O	1:B:30:ASN:C	2.51	0.48
1:B:196:ILE:N	1:B:197:PRO:HD2	2.29	0.48
1:C:150:TYR:N	1:C:150:TYR:CD1	2.80	0.48
1:A:13:ARG:NH1	1:A:156:TYR:OH	2.46	0.48
1:C:16:GLU:O	1:C:20:ILE:HG13	2.12	0.48
1:B:193:ASN:ND2	1:B:193:ASN:H	2.11	0.48
1:B:211:VAL:HG13	1:B:213:TYR:CE1	2.47	0.48
1:C:194:ASP:OD1	1:C:197:PRO:HD2	2.13	0.48
1:A:211:VAL:HG22	1:A:213:TYR:CE1	2.48	0.48
1:A:152:ASN:ND2	1:A:152:ASN:N	2.61	0.48
1:C:61:ILE:HB	1:C:127:LEU:HD23	1.96	0.47
1:A:97:HIS:CG	1:A:100:TYR:CD1	3.01	0.47
1:B:184:THR:HG22	1:B:185:GLN:N	2.30	0.47
1:A:17:MET:HE3	1:A:130:THR:HG21	1.96	0.47
1:C:122:TYR:HB3	1:C:125:TYR:CG	2.49	0.47
1:B:100:TYR:OH	4:B:908:FER:H103	2.15	0.47
1:B:66:ARG:HH21	1:B:73:ASN:HD21	1.62	0.47
1:C:257:ALA:HA	5:C:2073:HOH:O	2.14	0.47
1:B:39:GLU:HG2	1:B:114:LEU:CD2	2.42	0.47
1:B:173:ASN:HA	1:B:178:VAL:HG23	1.97	0.47
1:C:88:LEU:HD21	1:C:171:TYR:CE2	2.49	0.47
1:B:216:VAL:HG12	1:B:217:ASP:N	2.28	0.47
1:C:74:LEU:O	1:C:77:ASP:HB2	2.15	0.47
1:B:244:ASN:HD22	1:B:244:ASN:H	1.62	0.47
1:B:243:VAL:O	1:B:243:VAL:HG12	2.15	0.47
1:A:67:GLY:HA2	1:A:135:GLY:H	1.79	0.47
1:A:180:SER:HB3	1:A:183:THR:OG1	2.14	0.46
1:C:18:ALA:HB2	1:C:158:PHE:CE2	2.50	0.46
1:C:104:TRP:CZ3	1:C:142:THR:HA	2.51	0.46
1:C:4:GLN:HG3	1:C:5:GLY:N	2.31	0.46
1:B:31:ILE:CD1	1:B:35:ILE:HD12	2.41	0.46
1:B:67:GLY:HA2	1:B:134:LEU:HB3	1.97	0.46
1:C:241:GLN:NE2	5:C:2067:HOH:O	2.48	0.46

Continued on next page...

Continued from previous page...

Atom-1	Atom-2	Interatomic distance (Å)	Clash overlap (Å)
1:C:90:GLN:H	1:C:90:GLN:CD	2.19	0.46
1:C:42:TYR:CG	1:C:43:ASN:N	2.83	0.46
1:B:79:ASN:CG	2:B:900:NAG:C1	2.85	0.46
1:C:87:THR:C	1:C:89:PRO:HD3	2.35	0.46
1:A:152:ASN:N	1:A:152:ASN:HD22	2.13	0.45
1:A:143:ALA:HB2	1:A:155:LEU:HD13	1.98	0.45
1:C:232:VAL:O	1:C:233:GLN:HB3	2.15	0.45
1:B:176:PHE:O	1:B:185:GLN:HG3	2.16	0.45
1:B:23:ALA:HB1	1:B:29:CYS:N	2.31	0.45
1:C:1:ALA:HB3	1:C:233:GLN:HE22	1.81	0.45
1:A:35:ILE:HD13	1:A:35:ILE:C	2.37	0.45
1:A:35:ILE:CD1	1:A:53:LEU:HB3	2.22	0.45
1:A:52:ILE:N	1:A:52:ILE:HD12	2.31	0.45
1:A:28:LEU:HD12	1:A:37:LYS:HG3	1.99	0.45
1:A:42:TYR:N	1:A:110:GLN:NE2	2.48	0.45
1:C:35:ILE:CD1	1:C:53:LEU:HD13	2.47	0.45
1:B:129:VAL:HG12	1:B:139:ALA:CB	2.46	0.45
1:C:89:PRO:C	1:C:91:CYS:N	2.70	0.45
1:A:36:ILE:N	1:A:36:ILE:HD12	2.32	0.45
1:B:154:ARG:HD3	1:B:185:GLN:HB3	1.98	0.45
2:B:900:NAG:C4	3:B:901:NDG:H1	2.37	0.45
1:A:133:ALA:O	1:A:136:ALA:N	2.49	0.45
1:B:200:PRO:HG2	1:B:206:TYR:CD1	2.52	0.45
1:A:66:ARG:HG2	1:A:67:GLY:N	2.32	0.44
1:A:184:THR:OG1	1:A:211:VAL:HG11	2.17	0.44
1:B:154:ARG:HD2	1:B:185:GLN:HB3	1.99	0.44
1:B:101:TYR:O	1:B:105:ILE:HG23	2.18	0.44
1:C:117:GLN:HG2	1:C:121:GLN:HE21	1.82	0.44
1:A:161:PRO:HG3	1:A:196:ILE:HG22	2.00	0.44
1:B:194:ASP:OD1	1:B:247:HIS:HB2	2.17	0.44
1:A:152:ASN:HD22	1:A:152:ASN:H	1.66	0.44
1:C:173:ASN:HA	1:C:178:VAL:HG23	2.00	0.44
1:C:61:ILE:HD12	1:C:127:LEU:HD21	2.00	0.44
1:B:244:ASN:HB2	5:B:2128:HOH:O	2.17	0.44
1:C:66:ARG:HG2	1:C:67:GLY:N	2.32	0.44
1:A:97:HIS:HB3	1:A:100:TYR:HB2	1.99	0.43
1:C:101:TYR:O	1:C:105:ILE:HG12	2.18	0.43
1:B:88:LEU:HG	1:B:90:GLN:HG2	1.99	0.43
1:A:195:GLY:O	1:A:199:LEU:HD23	2.17	0.43
1:C:77:ASP:CB	4:C:908:FER:H5	2.48	0.43
1:C:154:ARG:NH1	1:C:154:ARG:HG3	2.31	0.43

Continued on next page...

Continued from previous page...

Atom-1	Atom-2	Interatomic distance (Å)	Clash overlap (Å)
1:A:178:VAL:HG21	1:A:210:GLY:HA2	2.00	0.43
1:A:134:LEU:C	1:A:134:LEU:CD1	2.86	0.43
1:C:194:ASP:OD2	1:C:247:HIS:HA	2.18	0.43
1:C:254:THR:HG22	1:C:255:SER:N	2.34	0.43
1:C:195:GLY:C	1:C:241:GLN:O	2.57	0.43
1:C:162:ARG:HD3	1:C:207:ALA:HA	2.01	0.43
1:B:196:ILE:HG13	1:B:247:HIS:CE1	2.54	0.43
1:C:22:GLN:HA	1:C:22:GLN:NE2	2.34	0.43
1:B:244:ASN:N	1:B:244:ASN:HD22	2.17	0.43
1:C:253:MET:HB3	1:C:260:TRP:CE3	2.53	0.43
1:B:31:ILE:HB	1:B:32:PRO:CD	2.48	0.43
1:C:52:ILE:HD12	1:C:52:ILE:H	1.84	0.43
1:A:253:MET:HB3	1:A:260:TRP:CZ3	2.54	0.43
1:C:194:ASP:HA	1:C:244:ASN:HD21	1.83	0.43
1:A:41:ILE:HA	1:A:110:GLN:NE2	2.34	0.42
1:C:184:THR:HG22	1:C:185:GLN:N	2.32	0.42
1:B:71:ASP:O	1:B:75:GLN:HG3	2.19	0.42
1:C:144:ALA:O	1:C:147:SER:HB2	2.19	0.42
1:B:187:PHE:N	1:B:187:PHE:CD1	2.87	0.42
1:B:100:TYR:HE2	1:B:134:LEU:HD22	1.80	0.42
1:C:196:ILE:HG13	1:C:247:HIS:CE1	2.54	0.42
1:C:190:THR:OG1	1:C:214:TRP:HA	2.19	0.42
1:A:22:GLN:HE21	1:A:22:GLN:CA	2.23	0.42
1:B:104:TRP:C	1:B:106:SER:H	2.23	0.42
1:A:35:ILE:HD13	1:A:36:ILE:N	2.34	0.42
1:B:53:LEU:HB2	1:B:62:ILE:HB	2.02	0.42
1:C:79:ASN:O	1:C:97:HIS:CE1	2.73	0.42
1:B:133:ALA:O	1:B:136:ALA:HB3	2.19	0.42
1:B:104:TRP:C	1:B:106:SER:N	2.73	0.42
1:B:162:ARG:HB3	1:B:206:TYR:HB3	2.01	0.41
1:A:253:MET:HB3	1:A:260:TRP:CE3	2.54	0.41
1:A:89:PRO:CD	1:A:90:GLN:NE2	2.83	0.41
1:A:17:MET:CE	1:A:130:THR:HB	2.51	0.41
1:B:133:ALA:O	1:B:134:LEU:C	2.58	0.41
1:B:178:VAL:O	1:B:178:VAL:HG12	2.20	0.41
1:B:122:TYR:HB3	1:B:125:TYR:CD1	2.56	0.41
1:B:180:SER:HA	1:B:181:PRO:HD3	1.92	0.41
1:A:31:ILE:O	1:A:32:PRO:C	2.58	0.41
1:B:78:THR:HG21	5:B:2059:HOH:O	2.19	0.41
1:B:17:MET:HG3	1:B:156:TYR:CG	2.56	0.41
1:C:173:ASN:HB3	1:C:178:VAL:HB	2.03	0.41

Continued on next page...

Continued from previous page...

Atom-1	Atom-2	Interatomic distance (Å)	Clash overlap (Å)
1:B:83:THR:HA	1:B:84:PRO:HD3	1.95	0.41
1:B:97:HIS:CG	1:B:100:TYR:CD1	3.08	0.41
1:C:41:ILE:HD13	1:C:111:VAL:HG22	2.02	0.41
1:B:190:THR:OG1	1:B:214:TRP:HA	2.21	0.41
1:A:248:THR:O	1:A:254:THR:HA	2.20	0.41
1:A:225:PHE:N	1:A:225:PHE:CD1	2.88	0.41
1:B:232:VAL:HG12	1:B:237:ALA:HB2	2.02	0.41
1:C:144:ALA:HB2	1:C:172:MET:SD	2.60	0.40
1:C:182:GLU:HG2	5:C:2053:HOH:O	2.20	0.40
1:B:22:GLN:HA	1:B:22:GLN:HE21	1.86	0.40
1:A:243:VAL:HG13	1:A:247:HIS:CD2	2.55	0.40
2:C:900:NAG:O4	3:C:901:NDG:N2	2.54	0.40
1:C:97:HIS:ND1	1:C:99:GLY:N	2.68	0.40
1:B:110:GLN:O	1:B:114:LEU:HG	2.21	0.40
1:A:193:ASN:H	1:A:193:ASN:ND2	2.15	0.40
1:A:80:TYR:CD1	1:A:200:PRO:HB3	2.56	0.40
1:A:173:ASN:OD1	1:A:178:VAL:HG11	2.22	0.40
1:B:66:ARG:HH21	1:B:73:ASN:ND2	2.19	0.40
1:C:1:ALA:CB	1:C:233:GLN:HE22	2.35	0.40
1:C:54:ARG:HE	1:C:56:ASP:CG	2.23	0.40

There are no symmetry-related clashes.

5.3 Torsion angles ⓘ

5.3.1 Protein backbone ⓘ

In the following table, the Percentiles column shows the percent Ramachandran outliers of the chain as a percentile score with respect to all X-ray entries followed by that with respect to entries of similar resolution.

The Analysed column shows the number of residues for which the backbone conformation was analysed, and the total number of residues.

Mol	Chain	Analysed	Favoured	Allowed	Outliers	Percentiles	
1	A	258/260 (99%)	239 (93%)	14 (5%)	5 (2%)	10	15
1	B	258/260 (99%)	235 (91%)	19 (7%)	4 (2%)	12	20
1	C	258/260 (99%)	227 (88%)	26 (10%)	5 (2%)	10	15
All	All	774/780 (99%)	701 (91%)	59 (8%)	14 (2%)	11	17

All (14) Ramachandran outliers are listed below:

Mol	Chain	Res	Type
1	A	29	CYS
1	B	241	GLN
1	B	257	ALA
1	C	29	CYS
1	C	30	ASN
1	A	256	GLY
1	B	30	ASN
1	C	256	GLY
1	A	257	ALA
1	B	256	GLY
1	A	32	PRO
1	C	33	SER
1	C	182	GLU
1	A	242	GLY

5.3.2 Protein sidechains ⓘ

In the following table, the Percentiles column shows the percent sidechain outliers of the chain as a percentile score with respect to all X-ray entries followed by that with respect to entries of similar resolution.

The Analysed column shows the number of residues for which the sidechain conformation was analysed, and the total number of residues.

Mol	Chain	Analysed	Rotameric	Outliers	Percentiles	
1	A	214/214 (100%)	199 (93%)	15 (7%)	19	33
1	B	214/214 (100%)	204 (95%)	10 (5%)	32	54
1	C	214/214 (100%)	199 (93%)	15 (7%)	19	33
All	All	642/642 (100%)	602 (94%)	40 (6%)	23	39

All (40) residues with a non-rotameric sidechain are listed below:

Mol	Chain	Res	Type
1	A	9	ASP
1	A	13	ARG
1	A	16	GLU
1	A	22	GLN
1	A	29	CYS
1	A	35	ILE
1	A	71	ASP

Continued on next page...

Continued from previous page...

Mol	Chain	Res	Type
1	A	90	GLN
1	A	117	GLN
1	A	134	LEU
1	A	152	ASN
1	A	186	TYR
1	A	193	ASN
1	A	211	VAL
1	A	244	ASN
1	B	29	CYS
1	B	35	ILE
1	B	59	LYS
1	B	124	ASP
1	B	134	LEU
1	B	152	ASN
1	B	186	TYR
1	B	193	ASN
1	B	199	LEU
1	B	244	ASN
1	C	13	ARG
1	C	27	ASP
1	C	30	ASN
1	C	35	ILE
1	C	71	ASP
1	C	74	LEU
1	C	85	PHE
1	C	90	GLN
1	C	134	LEU
1	C	150	TYR
1	C	152	ASN
1	C	186	TYR
1	C	203	ASP
1	C	211	VAL
1	C	244	ASN

Some sidechains can be flipped to improve hydrogen bonding and reduce clashes. All (41) such sidechains are listed below:

Mol	Chain	Res	Type
1	A	12	ASN
1	A	22	GLN
1	A	30	ASN
1	A	73	ASN
1	A	90	GLN

Continued on next page...

Continued from previous page...

Mol	Chain	Res	Type
1	A	108	GLN
1	A	110	GLN
1	A	152	ASN
1	A	177	GLN
1	A	185	GLN
1	A	191	HIS
1	A	193	ASN
1	A	233	GLN
1	A	244	ASN
1	A	247	HIS
1	B	12	ASN
1	B	22	GLN
1	B	73	ASN
1	B	90	GLN
1	B	110	GLN
1	B	152	ASN
1	B	177	GLN
1	B	185	GLN
1	B	191	HIS
1	B	193	ASN
1	B	233	GLN
1	B	244	ASN
1	B	247	HIS
1	C	30	ASN
1	C	73	ASN
1	C	79	ASN
1	C	90	GLN
1	C	92	ASN
1	C	121	GLN
1	C	152	ASN
1	C	185	GLN
1	C	191	HIS
1	C	193	ASN
1	C	233	GLN
1	C	241	GLN
1	C	244	ASN

5.3.3 RNA ⓘ

There are no RNA molecules in this entry.

5.4 Non-standard residues in protein, DNA, RNA chains ⓘ

There are no non-standard protein/DNA/RNA residues in this entry.

5.5 Carbohydrates ⓘ

There are no carbohydrates in this entry.

5.6 Ligand geometry ⓘ

9 ligands are modelled in this entry.

In the following table, the Counts columns list the number of bonds (or angles) for which Mogul statistics could be retrieved, the number of bonds (or angles) that are observed in the model and the number of bonds (or angles) that are defined in the chemical component dictionary. The Link column lists molecule types, if any, to which the group is linked. The Z score for a bond length (or angle) is the number of standard deviations the observed value is removed from the expected value. A bond length (or angle) with $|Z| > 2$ is considered an outlier worth inspection. RMSZ is the root-mean-square of all Z scores of the bond lengths (or angles).

Mol	Type	Chain	Res	Link	Bond lengths			Bond angles		
					Counts	RMSZ	$\# Z > 2$	Counts	RMSZ	$\# Z > 2$
2	NAG	A	900	-	15,15,15	0.47	0	17,21,21	0.62	0
3	NDG	A	901	-	15,15,15	0.37	0	17,21,21	0.51	0
4	FER	A	908	-	11,14,14	1.64	2 (18%)	14,18,18	0.72	0
2	NAG	B	900	-	15,15,15	0.45	0	17,21,21	0.73	0
3	NDG	B	901	-	15,15,15	0.40	0	17,21,21	0.53	0
4	FER	B	908	-	11,14,14	1.48	2 (18%)	14,18,18	0.67	0
2	NAG	C	900	-	15,15,15	0.36	0	17,21,21	0.57	0
3	NDG	C	901	-	15,15,15	0.44	0	17,21,21	0.53	0
4	FER	C	908	-	11,14,14	1.26	1 (9%)	14,18,18	0.56	0

In the following table, the Chirals column lists the number of chiral outliers, the number of chiral centers analysed, the number of these observed in the model and the number defined in the chemical component dictionary. Similar counts are reported in the Torsion and Rings columns. '-' means no outliers of that kind were identified.

Mol	Type	Chain	Res	Link	Chirals	Torsions	Rings
2	NAG	A	900	-	-	0/6/26/26	0/1/1/1
3	NDG	A	901	-	-	0/6/26/26	0/1/1/1
4	FER	A	908	-	-	0/5/7/7	0/1/1/1
2	NAG	B	900	-	-	0/6/26/26	0/1/1/1
3	NDG	B	901	-	-	0/6/26/26	0/1/1/1

Continued on next page...

Continued from previous page...

Mol	Type	Chain	Res	Link	Chirals	Torsions	Rings
4	FER	B	908	-	-	0/5/7/7	0/1/1/1
2	NAG	C	900	-	-	0/6/26/26	0/1/1/1
3	NDG	C	901	-	-	0/6/26/26	0/1/1/1
4	FER	C	908	-	-	0/5/7/7	0/1/1/1

All (5) bond length outliers are listed below:

Mol	Chain	Res	Type	Atoms	Z	Observed(Å)	Ideal(Å)
4	B	908	FER	C6-C1	2.18	1.43	1.39
4	A	908	FER	C6-C1	2.43	1.44	1.39
4	B	908	FER	C2-C3	2.91	1.44	1.38
4	A	908	FER	C2-C3	2.95	1.44	1.38
4	C	908	FER	C2-C3	3.04	1.44	1.38

There are no bond angle outliers.

There are no chirality outliers.

There are no torsion outliers.

There are no ring outliers.

8 monomers are involved in 31 short contacts:

Mol	Chain	Res	Type	Clashes	Symm-Clashes
2	A	900	NAG	7	0
3	A	901	NDG	5	0
2	B	900	NAG	6	0
3	B	901	NDG	3	0
4	B	908	FER	1	0
2	C	900	NAG	8	0
3	C	901	NDG	6	0
4	C	908	FER	8	0

5.7 Other polymers [i](#)

There are no such residues in this entry.

5.8 Polymer linkage issues [i](#)

There are no chain breaks in this entry.

6 Fit of model and data ⓘ

6.1 Protein, DNA and RNA chains ⓘ

In the following table, the column labelled ‘#RSRZ> 2’ contains the number (and percentage) of RSRZ outliers, followed by percent RSRZ outliers for the chain as percentile scores relative to all X-ray entries and entries of similar resolution. The OWAB column contains the minimum, median, 95th percentile and maximum values of the occupancy-weighted average B-factor per residue. The column labelled ‘Q< 0.9’ lists the number of (and percentage) of residues with an average occupancy less than 0.9.

Mol	Chain	Analysed	<RSRZ>	#RSRZ>2	OWAB(Å ²)	Q<0.9
1	A	260/260 (100%)	0.04	1 (0%) 93 94	6, 19, 36, 45	0
1	B	260/260 (100%)	-0.01	5 (1%) 70 74	7, 20, 38, 52	0
1	C	260/260 (100%)	0.90	25 (9%) 10 11	21, 44, 63, 68	0
All	All	780/780 (100%)	0.31	31 (3%) 42 48	6, 24, 57, 68	0

All (31) RSRZ outliers are listed below:

Mol	Chain	Res	Type	RSRZ
1	C	257	ALA	7.9
1	C	152	ASN	4.5
1	C	177	GLN	4.4
1	A	257	ALA	4.4
1	C	187	PHE	4.3
1	B	257	ALA	3.6
1	C	219	TYR	3.5
1	C	256	GLY	3.4
1	C	127	LEU	3.3
1	C	260	TRP	3.2
1	C	181	PRO	3.1
1	C	147	SER	3.1
1	C	31	ILE	3.1
1	C	182	GLU	3.1
1	C	183	THR	3.1
1	C	210	GLY	3.0
1	B	256	GLY	2.9
1	C	222	GLN	2.9
1	B	241	GLN	2.7
1	C	32	PRO	2.6
1	B	35	ILE	2.6
1	C	184	THR	2.5
1	C	2	SER	2.4

Continued on next page...

Continued from previous page...

Mol	Chain	Res	Type	RSRZ
1	C	6	ILE	2.4
1	C	29	CYS	2.3
1	C	156	TYR	2.2
1	B	152	ASN	2.2
1	C	185	GLN	2.2
1	C	28	LEU	2.1
1	C	137	SER	2.1
1	C	26	ALA	2.1

6.2 Non-standard residues in protein, DNA, RNA chains [i](#)

There are no non-standard protein/DNA/RNA residues in this entry.

6.3 Carbohydrates [i](#)

There are no carbohydrates in this entry.

6.4 Ligands [i](#)

In the following table, the Atoms column lists the number of modelled atoms in the group and the number defined in the chemical component dictionary. LLDF column lists the quality of electron density of the group with respect to its neighbouring residues in protein, DNA or RNA chains. The B-factors column lists the minimum, median, 95th percentile and maximum values of B factors of atoms in the group. The column labelled 'Q< 0.9' lists the number of atoms with occupancy less than 0.9.

Mol	Type	Chain	Res	Atoms	RSCC	RSR	LLDF	B-factors(Å ²)	Q<0.9
4	FER	C	908	14/14	0.80	0.44	9.72	78,81,82,82	0
4	FER	A	908	14/14	0.66	0.38	8.71	76,78,83,83	0
4	FER	B	908	14/14	0.75	0.42	8.35	71,73,77,78	0
3	NDG	C	901	15/15	0.32	0.45	8.15	85,90,91,91	0
3	NDG	A	901	15/15	0.83	0.26	7.79	33,36,41,42	0
3	NDG	B	901	15/15	0.81	0.22	3.21	24,29,31,38	0
2	NAG	A	900	15/15	0.94	0.18	1.54	17,20,24,26	0
2	NAG	C	900	15/15	0.90	0.17	0.79	38,40,42,43	0
2	NAG	B	900	15/15	0.90	0.16	0.24	25,27,30,30	0

6.5 Other polymers [i](#)

There are no such residues in this entry.