



Full wwPDB X-ray Structure Validation Report ⓘ

Jan 31, 2016 – 06:35 PM GMT

PDB ID : 1BL7
Title : THE COMPLEX STRUCTURE OF THE MAP KINASE P38/SB220025
Authors : Wang, Z.; Canagarajah, B.J.; Boehm, J.C.; Kassis, S.; Cobb, M.H.; Young, P.R.; Abdel-Meguid, S.; Adams, J.L.; Goldsmith, E.J.
Deposited on : 1998-07-23
Resolution : 2.50 Å(reported)

This is a Full wwPDB X-ray Structure Validation Report for a publicly released PDB entry.
We welcome your comments at validation@mail.wwpdb.org
A user guide is available at
<http://wwpdb.org/validation/2016/XrayValidationReportHelp>
with specific help available everywhere you see the ⓘ symbol.

The following versions of software and data (see [references ⓘ](#)) were used in the production of this report:

MolProbity : 4.02b-467
Mogul : 1.7 (RC4), CSD as536be (2015)
Xtriage (Phenix) : **NOT EXECUTED**
EDS : **NOT EXECUTED**
Percentile statistics : 20151230.v01 (using entries in the PDB archive December 30th 2015)
Ideal geometry (proteins) : Engh & Huber (2001)
Ideal geometry (DNA, RNA) : Parkinson et al. (1996)
Validation Pipeline (wwPDB-VP) : trunk26865

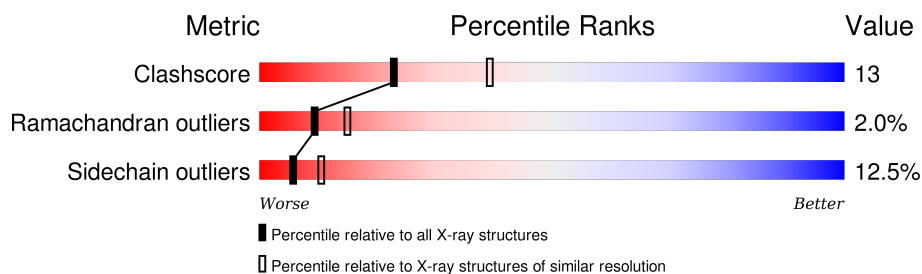
1 Overall quality at a glance

The following experimental techniques were used to determine the structure:

X-RAY DIFFRACTION

The reported resolution of this entry is 2.50 Å.

Percentile scores (ranging between 0-100) for global validation metrics of the entry are shown in the following graphic. The table shows the number of entries on which the scores are based.



Metric	Whole archive (#Entries)	Similar resolution (#Entries, resolution range(Å))
Clashscore	102246	4242 (2.50-2.50)
Ramachandran outliers	100387	4156 (2.50-2.50)
Sidechain outliers	100360	4158 (2.50-2.50)

The table below summarises the geometric issues observed across the polymeric chains and their fit to the electron density. The red, orange, yellow and green segments on the lower bar indicate the fraction of residues that contain outliers for ≥ 3 , 2, 1 and 0 types of geometric quality criteria. A grey segment represents the fraction of residues that are not modelled. The numeric value for each fraction is indicated below the corresponding segment, with a dot representing fractions $\leq 5\%$. The upper red bar (where present) indicates the fraction of residues that have poor fit to the electron density. The numeric value is given above the bar.

Note EDS was not executed.

Mol	Chain	Length	Quality of chain
1	A	379	 60% 28% • • 7%

2 Entry composition [i](#)

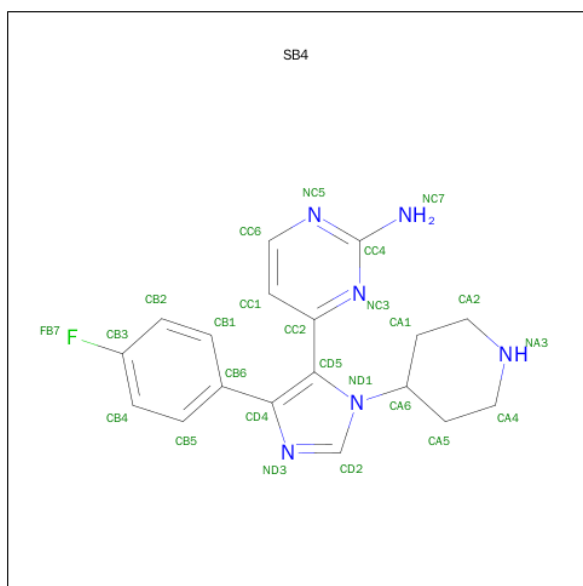
There are 3 unique types of molecules in this entry. The entry contains 2915 atoms, of which 0 are hydrogens and 0 are deuteriums.

In the tables below, the ZeroOcc column contains the number of atoms modelled with zero occupancy, the AltConf column contains the number of residues with at least one atom in alternate conformation and the Trace column contains the number of residues modelled with at most 2 atoms.

- Molecule 1 is a protein called PROTEIN (MAP KINASE P38).

Mol	Chain	Residues	Atoms					ZeroOcc	AltConf	Trace
1	A	351	Total	C	N	O	S	73	0	0
			2833	1813	483	524	13			

- Molecule 2 is 4-(4-FLUOROPHENYL)-1-(4-PIPERIDINYL)-5-(2-AMINO-4-PYRIMIDINY L)-IMIDAZOLE (three-letter code: SB4) (formula: C₁₈H₁₉FN₆).



Mol	Chain	Residues	Atoms				ZeroOcc	AltConf
2	A	1	Total	C	F	N	0	0
			25	18	1	6		

- Molecule 3 is water.

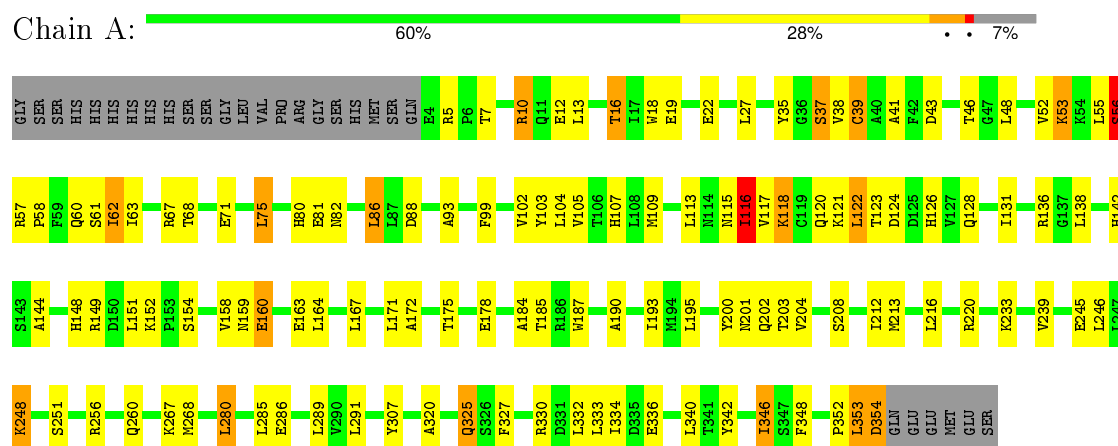
Mol	Chain	Residues	Atoms		ZeroOcc	AltConf
3	A	57	Total	O	0	0
			57	57		

3 Residue-property plots

These plots are drawn for all protein, RNA and DNA chains in the entry. The first graphic for a chain summarises the proportions of errors displayed in the second graphic. The second graphic shows the sequence view annotated by issues in geometry and electron density. Residues are color-coded according to the number of geometric quality criteria for which they contain at least one outlier: green = 0, yellow = 1, orange = 2 and red = 3 or more. A red dot above a residue indicates a poor fit to the electron density ($RSRZ > 2$). Stretches of 2 or more consecutive residues without any outlier are shown as a green connector. Residues present in the sample, but not in the model, are shown in grey.

Note EDS was not executed.

- Molecule 1: PROTEIN (MAP KINASE P38)



4 Data and refinement statistics

Xtriage (Phenix) and EDS were not executed - this section will therefore be incomplete.

Property	Value	Source
Space group	P 21 21 21	Depositor
Cell constants a, b, c, α , β , γ	45.50 Å 84.83 Å 123.67 Å 90.00° 90.00° 90.00°	Depositor
Resolution (Å)	20.00 – 2.50	Depositor
% Data completeness (in resolution range)	84.3 (20.00-2.50)	Depositor
R_{merge}	(Not available)	Depositor
R_{sym}	0.05	Depositor
Refinement program	X-PLOR	Depositor
R, R_{free}	0.193 , 0.265	Depositor
Estimated twinning fraction	No twinning to report.	Xtriage
Total number of atoms	2915	wwPDB-VP
Average B, all atoms (Å ²)	34.0	wwPDB-VP

5 Model quality ⓘ

5.1 Standard geometry ⓘ

Bond lengths and bond angles in the following residue types are not validated in this section: SB4

The Z score for a bond length (or angle) is the number of standard deviations the observed value is removed from the expected value. A bond length (or angle) with $|Z| > 5$ is considered an outlier worth inspection. RMSZ is the root-mean-square of all Z scores of the bond lengths (or angles).

Mol	Chain	Bond lengths		Bond angles	
		RMSZ	# Z >5	RMSZ	# Z >5
1	A	0.39	0/2899	0.62	0/3937

There are no bond length outliers.

There are no bond angle outliers.

There are no chirality outliers.

There are no planarity outliers.

5.2 Too-close contacts ⓘ

In the following table, the Non-H and H(model) columns list the number of non-hydrogen atoms and hydrogen atoms in the chain respectively. The H(added) column lists the number of hydrogen atoms added and optimized by MolProbity. The Clashes column lists the number of clashes within the asymmetric unit, whereas Symm-Clashes lists symmetry related clashes.

Mol	Chain	Non-H	H(model)	H(added)	Clashes	Symm-Clashes
1	A	2833	0	2821	75	0
2	A	25	0	19	0	0
3	A	57	0	0	3	0
All	All	2915	0	2840	75	0

The all-atom clashscore is defined as the number of clashes found per 1000 atoms (including hydrogen atoms). The all-atom clashscore for this structure is 13.

All (75) close contacts within the same asymmetric unit are listed below, sorted by their clash magnitude.

Atom-1	Atom-2	Interatomic distance (Å)	Clash overlap (Å)
1:A:80:HIS:HD2	1:A:82:ASN:H	1.27	0.82

Continued on next page...

Continued from previous page...

Atom-1	Atom-2	Interatomic distance (Å)	Clash overlap (Å)
1:A:57:ARG:HB3	1:A:60:GLN:HB3	1.63	0.81
1:A:124:ASP:O	1:A:128:GLN:HG3	1.89	0.73
1:A:55:LEU:HD12	1:A:102:VAL:HB	1.70	0.73
1:A:75:LEU:HB3	1:A:86:LEU:HG	1.72	0.72
1:A:62:ILE:HG22	1:A:334:ILE:HG13	1.72	0.70
1:A:80:HIS:CD2	1:A:82:ASN:H	2.11	0.68
1:A:48:LEU:HD13	1:A:107:HIS:CD2	2.31	0.66
1:A:113:LEU:HD13	1:A:158:VAL:HG21	1.82	0.60
1:A:113:LEU:O	1:A:116:ILE:HB	2.02	0.60
1:A:115:ASN:O	1:A:116:ILE:HD12	2.02	0.59
1:A:239:VAL:HG13	3:A:541:HOH:O	2.03	0.59
1:A:80:HIS:HD2	1:A:82:ASN:N	2.00	0.58
1:A:71:GLU:HG2	1:A:75:LEU:HD22	1.86	0.56
1:A:256:ARG:O	1:A:260:GLN:HG3	2.07	0.55
1:A:93:ALA:CB	1:A:99:PHE:HA	2.36	0.55
1:A:61:SER:HA	1:A:334:ILE:HD11	1.90	0.54
1:A:185:THR:HB	3:A:526:HOH:O	2.09	0.53
1:A:148:HIS:O	1:A:149:ARG:HB2	2.08	0.52
1:A:43:ASP:OD2	1:A:46:THR:HG23	2.10	0.52
1:A:342:TYR:O	1:A:346:ILE:HB	2.11	0.51
1:A:267:LYS:HE2	1:A:268:MET:O	2.10	0.51
1:A:27:LEU:HD12	1:A:41:ALA:HB2	1.92	0.51
1:A:27:LEU:HD12	1:A:41:ALA:CB	2.41	0.51
1:A:159:ASN:OD1	1:A:159:ASN:C	2.49	0.51
1:A:38:VAL:HG22	1:A:53:LYS:HG3	1.92	0.50
1:A:116:ILE:HG22	1:A:117:VAL:N	2.26	0.50
1:A:267:LYS:NZ	1:A:286:GLU:HG2	2.28	0.49
1:A:159:ASN:HD21	1:A:163:GLU:HG3	1.78	0.49
1:A:53:LYS:O	1:A:103:TYR:HA	2.11	0.49
1:A:10:ARG:HB3	1:A:19:GLU:HG3	1.93	0.49
1:A:184:ALA:HA	1:A:187:TRP:CD2	2.47	0.49
1:A:80:HIS:HE1	3:A:518:HOH:O	1.96	0.49
1:A:93:ALA:HB2	1:A:99:PHE:HA	1.95	0.49
1:A:13:LEU:HD23	1:A:39:CYS:SG	2.54	0.48
1:A:131:ILE:HD11	1:A:216:LEU:HD12	1.96	0.47
1:A:18:TRP:HZ2	1:A:37:SER:HB3	1.79	0.47
1:A:353:LEU:HB3	1:A:354:ASP:H	1.61	0.47
1:A:10:ARG:CB	1:A:19:GLU:HG3	2.45	0.47
1:A:88:ASP:HA	1:A:348:PHE:CE2	2.50	0.46
1:A:160:GLU:HG3	1:A:160:GLU:H	1.40	0.46
1:A:62:ILE:HG22	1:A:334:ILE:CG1	2.43	0.46

Continued on next page...

Continued from previous page...

Atom-1	Atom-2	Interatomic distance (Å)	Clash overlap (Å)
1:A:128:GLN:HG2	1:A:307:TYR:CZ	2.50	0.46
1:A:184:ALA:HA	1:A:187:TRP:CE3	2.51	0.46
1:A:245:GLU:O	1:A:248:LYS:HG2	2.16	0.46
1:A:56:SER:O	1:A:58:PRO:HD3	2.17	0.45
1:A:164:LEU:HD23	1:A:164:LEU:C	2.38	0.45
1:A:62:ILE:HG13	1:A:63:ILE:N	2.31	0.44
1:A:200:TYR:HB2	1:A:204:VAL:HG11	1.99	0.44
1:A:122:LEU:HD22	1:A:126:HIS:HB2	1.98	0.44
1:A:332:LEU:HB3	1:A:336:GLU:HB2	1.99	0.44
1:A:63:ILE:HD13	1:A:63:ILE:HA	1.92	0.43
1:A:56:SER:HB2	1:A:57:ARG:H	1.59	0.43
1:A:248:LYS:HE2	1:A:248:LYS:HB3	1.66	0.43
1:A:144:ALA:HB2	1:A:320:ALA:HB3	2.00	0.43
1:A:55:LEU:HD13	1:A:68:THR:HG23	2.01	0.43
1:A:213:MET:HG2	1:A:285:LEU:HD21	2.00	0.43
1:A:325:GLN:HA	1:A:327:PHE:CE2	2.54	0.43
1:A:52:VAL:HG13	1:A:105:VAL:HG22	2.01	0.42
1:A:201:ASN:ND2	1:A:203:THR:OG1	2.52	0.42
1:A:239:VAL:CG1	1:A:291:LEU:HB2	2.49	0.42
1:A:7:THR:O	1:A:22:GLU:HG2	2.20	0.42
1:A:201:ASN:O	1:A:204:VAL:HG22	2.20	0.42
1:A:35:TYR:HE1	1:A:38:VAL:HG23	1.84	0.41
1:A:117:VAL:O	1:A:118:LYS:C	2.58	0.41
1:A:53:LYS:HE3	1:A:104:LEU:HD12	2.02	0.41
1:A:16:THR:O	1:A:18:TRP:HD1	2.02	0.41
1:A:159:ASN:ND2	1:A:163:GLU:HG3	2.35	0.41
1:A:213:MET:CG	1:A:285:LEU:HD21	2.50	0.41
1:A:190:ALA:HB3	1:A:193:ILE:HG22	2.01	0.41
1:A:138:LEU:HG	1:A:142:HIS:CE1	2.56	0.41
1:A:151:LEU:HA	1:A:151:LEU:HD23	1.95	0.40
1:A:81:GLU:OE2	1:A:136:ARG:NH2	2.55	0.40
1:A:208:SER:O	1:A:212:ILE:HG13	2.21	0.40
1:A:280:LEU:HD12	1:A:280:LEU:HA	1.89	0.40

There are no symmetry-related clashes.

5.3 Torsion angles

5.3.1 Protein backbone

In the following table, the Percentiles column shows the percent Ramachandran outliers of the chain as a percentile score with respect to all X-ray entries followed by that with respect to entries of similar resolution.

The Analysed column shows the number of residues for which the backbone conformation was analysed, and the total number of residues.

Mol	Chain	Analysed	Favoured	Allowed	Outliers	Percentiles	
1	A	349/379 (92%)	322 (92%)	20 (6%)	7 (2%)	9	15

All (7) Ramachandran outliers are listed below:

Mol	Chain	Res	Type
1	A	116	ILE
1	A	120	GLN
1	A	171	LEU
1	A	172	ALA
1	A	56	SER
1	A	352	PRO
1	A	118	LYS

5.3.2 Protein sidechains

In the following table, the Percentiles column shows the percent sidechain outliers of the chain as a percentile score with respect to all X-ray entries followed by that with respect to entries of similar resolution.

The Analysed column shows the number of residues for which the sidechain conformation was analysed, and the total number of residues.

Mol	Chain	Analysed	Rotameric	Outliers	Percentiles	
1	A	311/336 (93%)	272 (88%)	39 (12%)	6	10

All (39) residues with a non-rotameric sidechain are listed below:

Mol	Chain	Res	Type
1	A	5	ARG
1	A	10	ARG
1	A	12	GLU
1	A	16	THR

Continued on next page...

Continued from previous page...

Mol	Chain	Res	Type
1	A	37	SER
1	A	39	CYS
1	A	53	LYS
1	A	56	SER
1	A	62	ILE
1	A	67	ARG
1	A	75	LEU
1	A	86	LEU
1	A	109	MET
1	A	116	ILE
1	A	121	LYS
1	A	122	LEU
1	A	123	THR
1	A	152	LYS
1	A	154	SER
1	A	160	GLU
1	A	167	LEU
1	A	175	THR
1	A	178	GLU
1	A	195	LEU
1	A	202	GLN
1	A	220	ARG
1	A	233	LYS
1	A	246	LEU
1	A	248	LYS
1	A	251	SER
1	A	280	LEU
1	A	289	LEU
1	A	325	GLN
1	A	330	ARG
1	A	333	LEU
1	A	340	LEU
1	A	346	ILE
1	A	353	LEU
1	A	354	ASP

Some sidechains can be flipped to improve hydrogen bonding and reduce clashes. All (9) such sidechains are listed below:

Mol	Chain	Res	Type
1	A	77	HIS
1	A	80	HIS
1	A	114	ASN

Continued on next page...

Continued from previous page...

Mol	Chain	Res	Type
1	A	128	GLN
1	A	155	ASN
1	A	199	HIS
1	A	202	GLN
1	A	272	ASN
1	A	312	HIS

5.3.3 RNA ⓘ

There are no RNA molecules in this entry.

5.4 Non-standard residues in protein, DNA, RNA chains ⓘ

There are no non-standard protein/DNA/RNA residues in this entry.

5.5 Carbohydrates ⓘ

There are no carbohydrates in this entry.

5.6 Ligand geometry ⓘ

1 ligand is modelled in this entry.

In the following table, the Counts columns list the number of bonds (or angles) for which Mogul statistics could be retrieved, the number of bonds (or angles) that are observed in the model and the number of bonds (or angles) that are defined in the chemical component dictionary. The Link column lists molecule types, if any, to which the group is linked. The Z score for a bond length (or angle) is the number of standard deviations the observed value is removed from the expected value. A bond length (or angle) with $|Z| > 2$ is considered an outlier worth inspection. RMSZ is the root-mean-square of all Z scores of the bond lengths (or angles).

Mol	Type	Chain	Res	Link	Bond lengths			Bond angles		
					Counts	RMSZ	$\# Z > 2$	Counts	RMSZ	$\# Z > 2$
2	SB4	A	800	-	24,28,28	1.92	9 (37%)	29,39,39	1.80	5 (17%)

In the following table, the Chirals column lists the number of chiral outliers, the number of chiral centers analysed, the number of these observed in the model and the number defined in the chemical component dictionary. Similar counts are reported in the Torsion and Rings columns. '-' means no outliers of that kind were identified.

Mol	Type	Chain	Res	Link	Chirals	Torsions	Rings
2	SB4	A	800	-	-	0/5/20/20	0/4/4/4

All (9) bond length outliers are listed below:

Mol	Chain	Res	Type	Atoms	Z	Observed(Å)	Ideal(Å)
2	A	800	SB4	CB6-CD4	-4.56	1.44	1.49
2	A	800	SB4	CC1-CC6	2.11	1.42	1.38
2	A	800	SB4	CB2-CB3	2.13	1.41	1.37
2	A	800	SB4	CC2-NC3	2.14	1.37	1.34
2	A	800	SB4	CB5-CB6	2.20	1.44	1.39
2	A	800	SB4	CB1-CB6	2.49	1.44	1.39
2	A	800	SB4	CB4-CB3	2.63	1.42	1.37
2	A	800	SB4	CD5-CD4	2.64	1.49	1.43
2	A	800	SB4	CC1-CC2	2.70	1.45	1.38

All (5) bond angle outliers are listed below:

Mol	Chain	Res	Type	Atoms	Z	Observed(°)	Ideal(°)
2	A	800	SB4	CA4-NA3-CA2	2.01	117.01	110.33
2	A	800	SB4	CA1-CA2-NA3	2.05	113.93	110.46
2	A	800	SB4	CD5-ND1-CA6	3.07	132.28	126.12
2	A	800	SB4	CA4-CA5-CA6	4.66	114.08	110.41
2	A	800	SB4	CC2-NC3-CC4	5.06	119.08	116.34

There are no chirality outliers.

There are no torsion outliers.

There are no ring outliers.

No monomer is involved in short contacts.

5.7 Other polymers ⓘ

There are no such residues in this entry.

5.8 Polymer linkage issues ⓘ

There are no chain breaks in this entry.

6 Fit of model and data ⓘ

6.1 Protein, DNA and RNA chains ⓘ

EDS was not executed - this section will therefore be empty.

6.2 Non-standard residues in protein, DNA, RNA chains ⓘ

EDS was not executed - this section will therefore be empty.

6.3 Carbohydrates ⓘ

EDS was not executed - this section will therefore be empty.

6.4 Ligands ⓘ

EDS was not executed - this section will therefore be empty.

6.5 Other polymers ⓘ

EDS was not executed - this section will therefore be empty.