



Full wwPDB X-ray Structure Validation Report ⓘ

Feb 1, 2016 – 03:09 PM GMT

PDB ID : 4BNU
Title : Crystal structure of 3-oxoacyl-(acyl-carrier-protein) reductase (FabG) from *Pseudomonas aeruginosa* in complex with 2-phenyl-4-(1,2,4- triazol-4-yl)quinazoline at 2.0Å resolution
Authors : Cukier, C.D.; Schnell, R.; Lindqvist, Y.; Schneider, G.
Deposited on : 2013-05-17
Resolution : 2.00 Å(reported)

This is a Full wwPDB X-ray Structure Validation Report for a publicly released PDB entry.
We welcome your comments at validation@mail.wwpdb.org
A user guide is available at
<http://wwpdb.org/validation/2016/XrayValidationReportHelp>
with specific help available everywhere you see the ⓘ symbol.

The following versions of software and data (see [references ⓘ](#)) were used in the production of this report:

MolProbity : 4.02b-467
Mogul : 1.7 (RC4), CSD as536be (2015)
Xtriage (Phenix) : 1.9-1692
EDS : rb-20026688
Percentile statistics : 20151230.v01 (using entries in the PDB archive December 30th 2015)
Refmac : 5.8.0135
CCP4 : 6.5.0
Ideal geometry (proteins) : Engh & Huber (2001)
Ideal geometry (DNA, RNA) : Parkinson et al. (1996)
Validation Pipeline (wwPDB-VP) : trunk26865

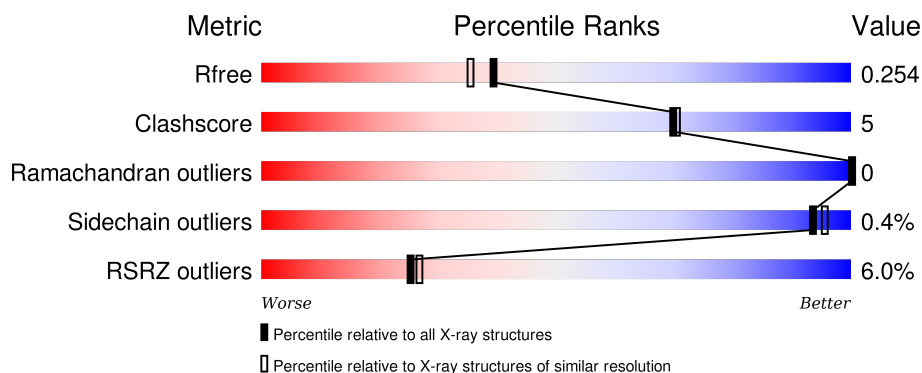
1 Overall quality at a glance

The following experimental techniques were used to determine the structure:

X-RAY DIFFRACTION

The reported resolution of this entry is 2.00 Å.

Percentile scores (ranging between 0-100) for global validation metrics of the entry are shown in the following graphic. The table shows the number of entries on which the scores are based.



Metric	Whole archive (#Entries)	Similar resolution (#Entries, resolution range(Å))
R_{free}	91344	6249 (2.00-2.00)
Clashscore	102246	7340 (2.00-2.00)
Ramachandran outliers	100387	7248 (2.00-2.00)
Sidechain outliers	100360	7247 (2.00-2.00)
RSRZ outliers	91569	6262 (2.00-2.00)

The table below summarises the geometric issues observed across the polymeric chains and their fit to the electron density. The red, orange, yellow and green segments on the lower bar indicate the fraction of residues that contain outliers for ≥ 3 , 2, 1 and 0 types of geometric quality criteria. A grey segment represents the fraction of residues that are not modelled. The numeric value for each fraction is indicated below the corresponding segment, with a dot representing fractions $\leq 5\%$. The upper red bar (where present) indicates the fraction of residues that have poor fit to the electron density. The numeric value is given above the bar.

Mol	Chain	Length	Quality of chain
1	A	269	<div> <div>3%</div> <div>84% 5% 11%</div> </div>
1	B	269	<div> <div>6%</div> <div>81% 8% 11%</div> </div>
1	C	269	<div> <div>7%</div> <div>85% 8% 7%</div> </div>
1	D	269	<div> <div>5%</div> <div>84% 8% 9%</div> </div>

2 Entry composition

There are 3 unique types of molecules in this entry. The entry contains 7423 atoms, of which 0 are hydrogens and 0 are deuteriums.

In the tables below, the ZeroOcc column contains the number of atoms modelled with zero occupancy, the AltConf column contains the number of residues with at least one atom in alternate conformation and the Trace column contains the number of residues modelled with at most 2 atoms.

- Molecule 1 is a protein called 3-OXOACYL-[ACYL-CARRIER-PROTEIN] REDUCTASE FABG.

Mol	Chain	Residues	Atoms					ZeroOcc	AltConf	Trace
1	A	239	Total	C	N	O	S	0	3	0
			1753	1090	314	342	7			
1	B	240	Total	C	N	O	S	0	4	0
			1767	1104	314	342	7			
1	C	251	Total	C	N	O	S	0	3	0
			1846	1152	335	352	7			
1	D	246	Total	C	N	O	S	0	1	0
			1794	1120	320	347	7			

There are 88 discrepancies between the modelled and reference sequences:

Chain	Residue	Modelled	Actual	Comment	Reference
A	-21	MET	-	EXPRESSION TAG	UNP O54438
A	-20	HIS	-	EXPRESSION TAG	UNP O54438
A	-19	HIS	-	EXPRESSION TAG	UNP O54438
A	-18	HIS	-	EXPRESSION TAG	UNP O54438
A	-17	HIS	-	EXPRESSION TAG	UNP O54438
A	-16	HIS	-	EXPRESSION TAG	UNP O54438
A	-15	HIS	-	EXPRESSION TAG	UNP O54438
A	-14	SER	-	EXPRESSION TAG	UNP O54438
A	-13	SER	-	EXPRESSION TAG	UNP O54438
A	-12	GLY	-	EXPRESSION TAG	UNP O54438
A	-11	VAL	-	EXPRESSION TAG	UNP O54438
A	-10	ASP	-	EXPRESSION TAG	UNP O54438
A	-9	LEU	-	EXPRESSION TAG	UNP O54438
A	-8	GLY	-	EXPRESSION TAG	UNP O54438
A	-7	THR	-	EXPRESSION TAG	UNP O54438
A	-6	GLU	-	EXPRESSION TAG	UNP O54438
A	-5	ASN	-	EXPRESSION TAG	UNP O54438
A	-4	LEU	-	EXPRESSION TAG	UNP O54438
A	-3	TYR	-	EXPRESSION TAG	UNP O54438
A	-2	PHE	-	EXPRESSION TAG	UNP O54438

Continued on next page...

Continued from previous page...

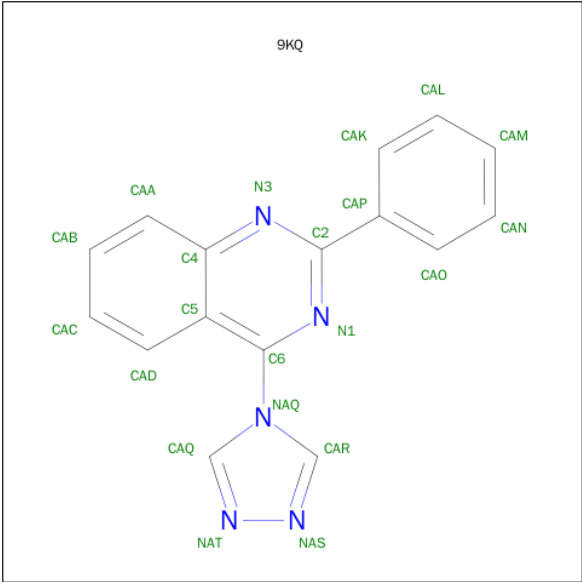
Chain	Residue	Modelled	Actual	Comment	Reference
A	-1	GLN	-	EXPRESSION TAG	UNP O54438
A	0	SER	-	EXPRESSION TAG	UNP O54438
B	-21	MET	-	EXPRESSION TAG	UNP O54438
B	-20	HIS	-	EXPRESSION TAG	UNP O54438
B	-19	HIS	-	EXPRESSION TAG	UNP O54438
B	-18	HIS	-	EXPRESSION TAG	UNP O54438
B	-17	HIS	-	EXPRESSION TAG	UNP O54438
B	-16	HIS	-	EXPRESSION TAG	UNP O54438
B	-15	HIS	-	EXPRESSION TAG	UNP O54438
B	-14	SER	-	EXPRESSION TAG	UNP O54438
B	-13	SER	-	EXPRESSION TAG	UNP O54438
B	-12	GLY	-	EXPRESSION TAG	UNP O54438
B	-11	VAL	-	EXPRESSION TAG	UNP O54438
B	-10	ASP	-	EXPRESSION TAG	UNP O54438
B	-9	LEU	-	EXPRESSION TAG	UNP O54438
B	-8	GLY	-	EXPRESSION TAG	UNP O54438
B	-7	THR	-	EXPRESSION TAG	UNP O54438
B	-6	GLU	-	EXPRESSION TAG	UNP O54438
B	-5	ASN	-	EXPRESSION TAG	UNP O54438
B	-4	LEU	-	EXPRESSION TAG	UNP O54438
B	-3	TYR	-	EXPRESSION TAG	UNP O54438
B	-2	PHE	-	EXPRESSION TAG	UNP O54438
B	-1	GLN	-	EXPRESSION TAG	UNP O54438
B	0	SER	-	EXPRESSION TAG	UNP O54438
C	-21	MET	-	EXPRESSION TAG	UNP O54438
C	-20	HIS	-	EXPRESSION TAG	UNP O54438
C	-19	HIS	-	EXPRESSION TAG	UNP O54438
C	-18	HIS	-	EXPRESSION TAG	UNP O54438
C	-17	HIS	-	EXPRESSION TAG	UNP O54438
C	-16	HIS	-	EXPRESSION TAG	UNP O54438
C	-15	HIS	-	EXPRESSION TAG	UNP O54438
C	-14	SER	-	EXPRESSION TAG	UNP O54438
C	-13	SER	-	EXPRESSION TAG	UNP O54438
C	-12	GLY	-	EXPRESSION TAG	UNP O54438
C	-11	VAL	-	EXPRESSION TAG	UNP O54438
C	-10	ASP	-	EXPRESSION TAG	UNP O54438
C	-9	LEU	-	EXPRESSION TAG	UNP O54438
C	-8	GLY	-	EXPRESSION TAG	UNP O54438
C	-7	THR	-	EXPRESSION TAG	UNP O54438
C	-6	GLU	-	EXPRESSION TAG	UNP O54438
C	-5	ASN	-	EXPRESSION TAG	UNP O54438
C	-4	LEU	-	EXPRESSION TAG	UNP O54438

Continued on next page...

Continued from previous page...

Chain	Residue	Modelled	Actual	Comment	Reference
C	-3	TYR	-	EXPRESSION TAG	UNP O54438
C	-2	PHE	-	EXPRESSION TAG	UNP O54438
C	-1	GLN	-	EXPRESSION TAG	UNP O54438
C	0	SER	-	EXPRESSION TAG	UNP O54438
D	-21	MET	-	EXPRESSION TAG	UNP O54438
D	-20	HIS	-	EXPRESSION TAG	UNP O54438
D	-19	HIS	-	EXPRESSION TAG	UNP O54438
D	-18	HIS	-	EXPRESSION TAG	UNP O54438
D	-17	HIS	-	EXPRESSION TAG	UNP O54438
D	-16	HIS	-	EXPRESSION TAG	UNP O54438
D	-15	HIS	-	EXPRESSION TAG	UNP O54438
D	-14	SER	-	EXPRESSION TAG	UNP O54438
D	-13	SER	-	EXPRESSION TAG	UNP O54438
D	-12	GLY	-	EXPRESSION TAG	UNP O54438
D	-11	VAL	-	EXPRESSION TAG	UNP O54438
D	-10	ASP	-	EXPRESSION TAG	UNP O54438
D	-9	LEU	-	EXPRESSION TAG	UNP O54438
D	-8	GLY	-	EXPRESSION TAG	UNP O54438
D	-7	THR	-	EXPRESSION TAG	UNP O54438
D	-6	GLU	-	EXPRESSION TAG	UNP O54438
D	-5	ASN	-	EXPRESSION TAG	UNP O54438
D	-4	LEU	-	EXPRESSION TAG	UNP O54438
D	-3	TYR	-	EXPRESSION TAG	UNP O54438
D	-2	PHE	-	EXPRESSION TAG	UNP O54438
D	-1	GLN	-	EXPRESSION TAG	UNP O54438
D	0	SER	-	EXPRESSION TAG	UNP O54438

- Molecule 2 is 2-PHENYL-4-(1,2,4-TRIAZOL-4-YL)QUINAZOLINE (three-letter code: 9KQ) (formula: C₁₆H₁₁N₅).



Mol	Chain	Residues	Atoms			ZeroOcc	AltConf
2	B	1	Total	C	N	0	1
			42	32	10		
2	D	1	Total	C	N	0	0
			21	16	5		

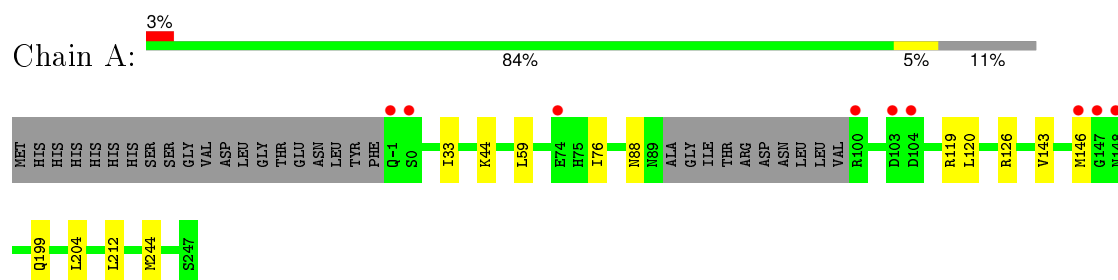
- Molecule 3 is water.

Mol	Chain	Residues	Atoms		ZeroOcc	AltConf
3	A	52	Total	O	0	0
			52	52		
3	B	53	Total	O	0	0
			53	53		
3	C	40	Total	O	0	0
			40	40		
3	D	55	Total	O	0	0
			55	55		

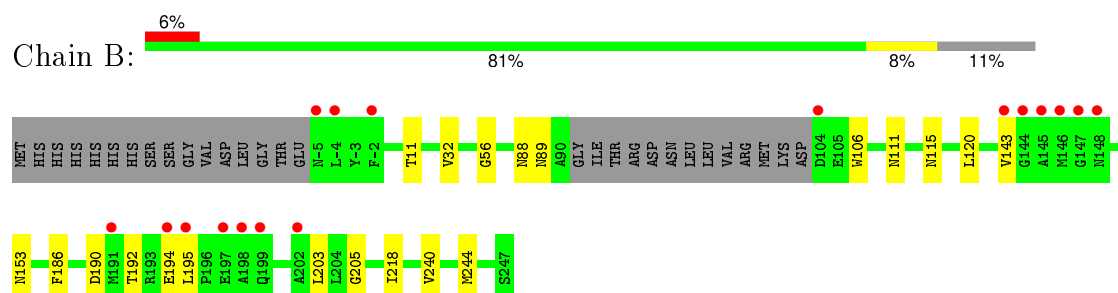
3 Residue-property plots [i](#)

These plots are drawn for all protein, RNA and DNA chains in the entry. The first graphic for a chain summarises the proportions of errors displayed in the second graphic. The second graphic shows the sequence view annotated by issues in geometry and electron density. Residues are color-coded according to the number of geometric quality criteria for which they contain at least one outlier: green = 0, yellow = 1, orange = 2 and red = 3 or more. A red dot above a residue indicates a poor fit to the electron density ($RSRZ > 2$). Stretches of 2 or more consecutive residues without any outlier are shown as a green connector. Residues present in the sample, but not in the model, are shown in grey.

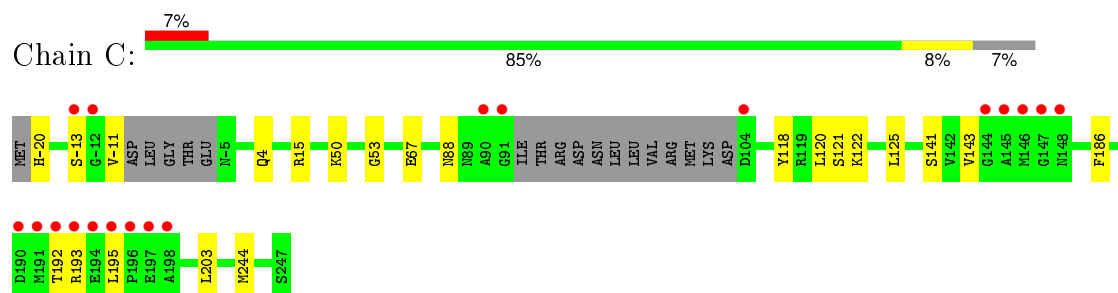
- Molecule 1: 3-OXOACYL-[ACYL-CARRIER-PROTEIN] REDUCTASE FABG



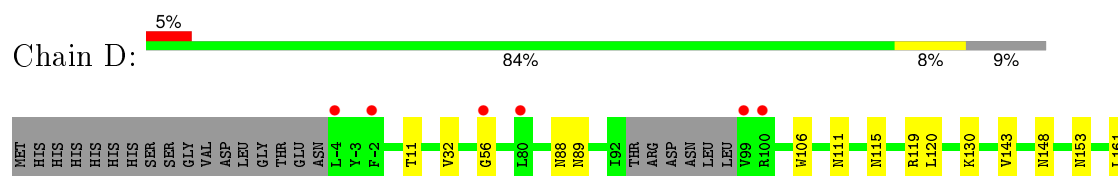
- Molecule 1: 3-OXOACYL-[ACYL-CARRIER-PROTEIN] REDUCTASE FABG

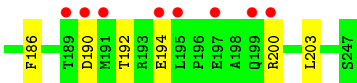


- Molecule 1: 3-OXOACYL-[ACYL-CARRIER-PROTEIN] REDUCTASE FABG



- Molecule 1: 3-OXOACYL-[ACYL-CARRIER-PROTEIN] REDUCTASE FABG





4 Data and refinement statistics

Property	Value	Source
Space group	P 21 21 21	Depositor
Cell constants a, b, c, α , β , γ	55.30Å 108.56Å 148.80Å 90.00° 90.00° 90.00°	Depositor
Resolution (Å)	37.52 – 2.00 37.49 – 2.00	Depositor EDS
% Data completeness (in resolution range)	98.1 (37.52-2.00) 98.2 (37.49-2.00)	Depositor EDS
R_{merge}	0.11	Depositor
R_{sym}	(Not available)	Depositor
$\langle I/\sigma(I) \rangle$ ¹	2.07 (at 2.00Å)	Xtriage
Refinement program	REFMAC 5.7.0032	Depositor
R, R_{free}	0.201 , 0.247 0.207 , 0.254	Depositor DCC
R_{free} test set	3065 reflections (5.36%)	DCC
Wilson B-factor (Å ²)	24.8	Xtriage
Anisotropy	0.779	Xtriage
Bulk solvent k_{sol} (e/Å ³), B_{sol} (Å ²)	0.35 , 45.3	EDS
Estimated twinning fraction	No twinning to report.	Xtriage
L-test for twinning ²	$\langle L \rangle = 0.48$, $\langle L^2 \rangle = 0.32$	Xtriage
Outliers	0 of 60280 reflections	Xtriage
F_o, F_c correlation	0.95	EDS
Total number of atoms	7423	wwPDB-VP
Average B, all atoms (Å ²)	35.0	wwPDB-VP

Xtriage's analysis on translational NCS is as follows: *The largest off-origin peak in the Patterson function is 14.71% of the height of the origin peak. No significant pseudotranslation is detected.*

¹Intensities estimated from amplitudes.

²Theoretical values of $\langle |L| \rangle$, $\langle L^2 \rangle$ for acentric reflections are 0.5, 0.375 respectively for untwinned datasets, and 0.333, 0.2 for perfectly twinned datasets.

5 Model quality [i](#)

5.1 Standard geometry [i](#)

Bond lengths and bond angles in the following residue types are not validated in this section: 9KQ

The Z score for a bond length (or angle) is the number of standard deviations the observed value is removed from the expected value. A bond length (or angle) with $|Z| > 5$ is considered an outlier worth inspection. RMSZ is the root-mean-square of all Z scores of the bond lengths (or angles).

Mol	Chain	Bond lengths		Bond angles	
		RMSZ	$\# Z > 5$	RMSZ	$\# Z > 5$
1	A	0.76	0/1779	0.83	2/2404 (0.1%)
1	B	0.74	0/1796	0.81	0/2430
1	C	0.75	0/1879	0.82	1/2541 (0.0%)
1	D	0.76	0/1816	0.84	2/2455 (0.1%)
All	All	0.75	0/7270	0.82	5/9830 (0.1%)

There are no bond length outliers.

All (5) bond angle outliers are listed below:

Mol	Chain	Res	Type	Atoms	Z	Observed(°)	Ideal(°)
1	D	119	ARG	NE-CZ-NH1	7.25	123.92	120.30
1	A	119	ARG	NE-CZ-NH1	6.22	123.41	120.30
1	C	193	ARG	NE-CZ-NH2	-5.56	117.52	120.30
1	A	126	ARG	NE-CZ-NH1	5.22	122.91	120.30
1	D	119	ARG	NE-CZ-NH2	-5.03	117.78	120.30

There are no chirality outliers.

There are no planarity outliers.

5.2 Too-close contacts [i](#)

In the following table, the Non-H and H(model) columns list the number of non-hydrogen atoms and hydrogen atoms in the chain respectively. The H(added) column lists the number of hydrogen atoms added and optimized by MolProbity. The Clashes column lists the number of clashes within the asymmetric unit, whereas Symm-Clashes lists symmetry related clashes.

Mol	Chain	Non-H	H(model)	H(added)	Clashes	Symm-Clashes
1	A	1753	0	1789	8	0
1	B	1767	0	1796	17	0

Continued on next page...

Continued from previous page...

Mol	Chain	Non-H	H(model)	H(added)	Clashes	Symm-Clashes
1	C	1846	0	1867	19	0
1	D	1794	0	1825	14	0
2	B	42	0	22	6	0
2	D	21	0	11	3	0
3	A	52	0	0	0	0
3	B	53	0	0	0	0
3	C	40	0	0	2	0
3	D	55	0	0	1	0
All	All	7423	0	7310	66	0

The all-atom clashscore is defined as the number of clashes found per 1000 atoms (including hydrogen atoms). The all-atom clashscore for this structure is 5.

All (66) close contacts within the same asymmetric unit are listed below, sorted by their clash magnitude.

Atom-1	Atom-2	Interatomic distance (Å)	Clash overlap (Å)
2:B:1248[B]:9KQ:HAR	2:B:1248[B]:9KQ:HAD	1.20	1.19
2:D:1248:9KQ:HAQ	2:D:1248:9KQ:HAD	1.39	1.01
2:B:1248[B]:9KQ:CAR	2:B:1248[B]:9KQ:HAD	1.95	0.96
1:C:186:PHE:CE2	1:C:244[B]:MET:SD	2.70	0.84
2:D:1248:9KQ:HAD	2:D:1248:9KQ:CAQ	2.09	0.82
2:B:1248[B]:9KQ:HAR	2:B:1248[B]:9KQ:CAD	2.10	0.72
1:C:186:PHE:CD2	1:C:244[B]:MET:SD	2.83	0.71
1:C:186:PHE:HE2	1:C:244[B]:MET:SD	2.16	0.66
1:C:67:GLU:OE2	3:C:2010:HOH:O	2.15	0.64
2:B:1248[A]:9KQ:HAD	2:B:1248[A]:9KQ:HAQ	1.79	0.64
2:B:1248[B]:9KQ:CAR	2:B:1248[B]:9KQ:CAD	2.67	0.63
1:A:204:LEU:HD21	1:A:212:LEU:HD12	1.81	0.60
1:B:186:PHE:HE2	1:B:244[A]:MET:SD	2.25	0.59
1:B:186:PHE:CE2	1:B:203:LEU:HD11	2.38	0.59
1:D:192:THR:O	1:D:200:ARG:NH2	2.36	0.58
1:C:186:PHE:CE2	1:C:203:LEU:HD11	2.39	0.57
1:B:186:PHE:CE2	1:B:244[A]:MET:SD	2.98	0.57
1:B:186:PHE:CZ	1:B:203:LEU:HD11	2.40	0.57
1:C:186:PHE:CZ	1:C:203:LEU:HD11	2.40	0.56
1:D:186:PHE:CE2	1:D:203:LEU:HD11	2.41	0.56
1:A:204:LEU:HD21	1:A:212:LEU:CD1	2.36	0.56
1:C:4:GLN:O	1:C:4:GLN:HG3	2.06	0.55
2:D:1248:9KQ:CAD	2:D:1248:9KQ:CAQ	2.81	0.53
1:D:186:PHE:CZ	1:D:203:LEU:HD11	2.44	0.53
1:B:190:ASP:O	1:B:194:GLU:HG3	2.10	0.52

Continued on next page...

Continued from previous page...

Atom-1	Atom-2	Interatomic distance (Å)	Clash overlap (Å)
1:D:143:VAL:HG11	1:D:186:PHE:CZ	2.45	0.52
1:A:146:MET:SD	1:A:199:GLN:NE2	2.83	0.52
1:D:88:ASN:OD1	1:D:120:LEU:HD23	2.11	0.51
1:B:88:ASN:OD1	1:B:120:LEU:HD23	2.11	0.51
1:C:141:SER:HB3	3:C:2023:HOH:O	2.10	0.51
1:A:33:ILE:HD13	1:A:76:ILE:HG12	1.93	0.51
2:B:1248[A]:9KQ:CAQ	2:B:1248[A]:9KQ:HAD	2.41	0.49
1:C:118:TYR:CZ	1:C:122:LYS:HE3	2.47	0.49
1:A:44:LYS:O	1:A:44:LYS:HG3	2.13	0.49
1:B:143:VAL:HG11	1:B:186:PHE:CZ	2.47	0.49
1:D:190:ASP:O	1:D:194:GLU:HG3	2.13	0.49
1:C:143:VAL:HG11	1:C:186:PHE:CZ	2.48	0.48
1:C:88:ASN:OD1	1:C:120:LEU:HD23	2.14	0.48
1:A:88:ASN:OD1	1:A:120:LEU:HD23	2.14	0.47
1:A:59:LEU:HD12	1:A:59:LEU:C	2.36	0.47
1:C:-13:SER:O	1:C:50:LYS:HE2	2.14	0.46
1:C:192:THR:HA	1:C:195:LEU:HD13	1.96	0.46
1:B:192:THR:HA	1:B:195:LEU:HD13	1.98	0.45
1:C:-13:SER:O	1:C:50:LYS:HB2	2.16	0.44
1:A:143:VAL:HG21	1:A:244:MET:CE	2.47	0.44
1:C:186:PHE:CZ	1:C:203:LEU:CD1	3.02	0.43
1:C:-11:VAL:HG21	1:C:53:GLY:HA2	2.01	0.43
1:B:205:GLY:O	1:D:148:ASN:ND2	2.49	0.43
1:B:244[B]:MET:SD	1:B:244[B]:MET:C	2.98	0.42
1:B:186:PHE:CD2	1:B:203:LEU:HD11	2.53	0.42
1:C:121:SER:O	1:C:125:LEU:HG	2.19	0.42
1:D:32:VAL:O	1:D:56:GLY:HA3	2.20	0.42
1:B:186:PHE:CZ	1:B:203:LEU:CD1	3.02	0.41
1:D:11:THR:O	1:D:89:ASN:HB3	2.20	0.41
1:D:186:PHE:CD2	1:D:203:LEU:HD11	2.55	0.41
1:D:106:TRP:HB3	1:D:153:ASN:OD1	2.20	0.41
1:D:186:PHE:CZ	1:D:203:LEU:CD1	3.03	0.41
1:C:186:PHE:CD2	1:C:203:LEU:HD11	2.56	0.41
1:D:111:ASN:O	1:D:115:ASN:ND2	2.46	0.41
1:B:32:VAL:O	1:B:56:GLY:HA3	2.20	0.41
1:D:161:LEU:HD23	3:D:2015:HOH:O	2.21	0.41
1:B:218:ILE:HD13	1:B:240:VAL:HG11	2.02	0.40
1:B:106:TRP:HB3	1:B:153:ASN:OD1	2.22	0.40
1:B:11:THR:O	1:B:89:ASN:HB3	2.21	0.40
1:B:111:ASN:O	1:B:115:ASN:ND2	2.48	0.40

There are no symmetry-related clashes.

5.3 Torsion angles [i](#)

5.3.1 Protein backbone [i](#)

In the following table, the Percentiles column shows the percent Ramachandran outliers of the chain as a percentile score with respect to all X-ray entries followed by that with respect to entries of similar resolution.

The Analysed column shows the number of residues for which the backbone conformation was analysed, and the total number of residues.

Mol	Chain	Analysed	Favoured	Allowed	Outliers	Percentiles	
1	A	238/269 (88%)	234 (98%)	4 (2%)	0	100	100
1	B	240/269 (89%)	236 (98%)	4 (2%)	0	100	100
1	C	248/269 (92%)	244 (98%)	4 (2%)	0	100	100
1	D	243/269 (90%)	238 (98%)	5 (2%)	0	100	100
All	All	969/1076 (90%)	952 (98%)	17 (2%)	0	100	100

There are no Ramachandran outliers to report.

5.3.2 Protein sidechains [i](#)

In the following table, the Percentiles column shows the percent sidechain outliers of the chain as a percentile score with respect to all X-ray entries followed by that with respect to entries of similar resolution.

The Analysed column shows the number of residues for which the sidechain conformation was analysed, and the total number of residues.

Mol	Chain	Analysed	Rotameric	Outliers	Percentiles	
1	A	178/201 (89%)	178 (100%)	0	100	100
1	B	179/201 (89%)	179 (100%)	0	100	100
1	C	187/201 (93%)	185 (99%)	2 (1%)	80	83
1	D	180/201 (90%)	179 (99%)	1 (1%)	90	93
All	All	724/804 (90%)	721 (100%)	3 (0%)	93	95

All (3) residues with a non-rotameric sidechain are listed below:

Mol	Chain	Res	Type
1	C	-20	HIS
1	C	15	ARG
1	D	130	LYS

Some sidechains can be flipped to improve hydrogen bonding and reduce clashes. All (8) such sidechains are listed below:

Mol	Chain	Res	Type
1	A	89	ASN
1	A	111	ASN
1	B	111	ASN
1	C	-17	HIS
1	C	-15	HIS
1	C	111	ASN
1	D	75	HIS
1	D	111	ASN

5.3.3 RNA [i](#)

There are no RNA molecules in this entry.

5.4 Non-standard residues in protein, DNA, RNA chains [i](#)

There are no non-standard protein/DNA/RNA residues in this entry.

5.5 Carbohydrates [i](#)

There are no carbohydrates in this entry.

5.6 Ligand geometry [i](#)

3 ligands are modelled in this entry.

In the following table, the Counts columns list the number of bonds (or angles) for which Mogul statistics could be retrieved, the number of bonds (or angles) that are observed in the model and the number of bonds (or angles) that are defined in the chemical component dictionary. The Link column lists molecule types, if any, to which the group is linked. The Z score for a bond length (or angle) is the number of standard deviations the observed value is removed from the expected value. A bond length (or angle) with $|Z| > 2$ is considered an outlier worth inspection. RMSZ is the root-mean-square of all Z scores of the bond lengths (or angles).

Mol	Type	Chain	Res	Link	Bond lengths			Bond angles		
					Counts	RMSZ	$\# Z > 2$	Counts	RMSZ	$\# Z > 2$
2	9KQ	B	1248[A]	-	21,24,24	2.51	6 (28%)	27,33,33	2.91	10 (37%)
2	9KQ	B	1248[B]	-	21,24,24	3.18	6 (28%)	27,33,33	2.51	7 (25%)
2	9KQ	D	1248	-	21,24,24	2.67	5 (23%)	27,33,33	3.10	9 (33%)

In the following table, the Chirals column lists the number of chiral outliers, the number of chiral centers analysed, the number of these observed in the model and the number defined in the chemical component dictionary. Similar counts are reported in the Torsion and Rings columns. '-' means no outliers of that kind were identified.

Mol	Type	Chain	Res	Link	Chirals	Torsions	Rings
2	9KQ	B	1248[A]	-	-	0/8/8/8	0/4/4/4
2	9KQ	B	1248[B]	-	-	0/8/8/8	0/4/4/4
2	9KQ	D	1248	-	-	1/8/8/8	0/4/4/4

All (17) bond length outliers are listed below:

Mol	Chain	Res	Type	Atoms	Z	Observed(Å)	Ideal(Å)
2	B	1248[B]	9KQ	C6-NAQ	-10.70	1.32	1.46
2	D	1248	9KQ	C6-NAQ	-8.51	1.35	1.46
2	B	1248[B]	9KQ	NAT-NAS	-7.82	1.22	1.37
2	B	1248[A]	9KQ	C6-NAQ	-6.53	1.38	1.46
2	B	1248[A]	9KQ	NAT-NAS	-6.36	1.25	1.37
2	D	1248	9KQ	C5-C4	-5.32	1.34	1.42
2	D	1248	9KQ	CAP-C2	-4.11	1.37	1.48
2	B	1248[B]	9KQ	CAP-C2	-3.09	1.40	1.48
2	B	1248[A]	9KQ	CAP-C2	-2.99	1.40	1.48
2	B	1248[B]	9KQ	C5-C4	-2.51	1.38	1.42
2	B	1248[A]	9KQ	C5-C4	-2.44	1.38	1.42
2	B	1248[B]	9KQ	CAQ-NAT	2.11	1.33	1.30
2	B	1248[B]	9KQ	CAR-NAS	2.40	1.34	1.30
2	D	1248	9KQ	CAR-NAS	2.78	1.34	1.30
2	B	1248[A]	9KQ	CAR-NAS	2.80	1.35	1.30
2	D	1248	9KQ	CAQ-NAT	3.34	1.35	1.30
2	B	1248[A]	9KQ	CAQ-NAT	4.27	1.37	1.30

All (26) bond angle outliers are listed below:

Mol	Chain	Res	Type	Atoms	Z	Observed(°)	Ideal(°)
2	D	1248	9KQ	N3-C2-N1	-9.70	119.94	126.20
2	B	1248[A]	9KQ	N3-C2-N1	-8.74	120.56	126.20
2	B	1248[B]	9KQ	N3-C2-N1	-8.35	120.81	126.20
2	B	1248[B]	9KQ	CAD-C5-C6	-3.91	120.63	126.23
2	D	1248	9KQ	C5-C4-N3	-3.88	119.11	122.90
2	D	1248	9KQ	CAR-NAQ-C6	-3.83	118.50	126.02
2	B	1248[B]	9KQ	C5-C4-N3	-3.75	119.24	122.90
2	B	1248[A]	9KQ	CAR-NAQ-C6	-3.60	118.95	126.02
2	B	1248[A]	9KQ	CAR-NAQ-CAQ	-2.67	102.15	108.23
2	B	1248[A]	9KQ	C5-C4-N3	-2.41	120.55	122.90

Continued on next page...

Continued from previous page...

Mol	Chain	Res	Type	Atoms	Z	Observed(°)	Ideal(°)
2	D	1248	9KQ	CAL-CAK-CAP	-2.25	117.58	120.56
2	D	1248	9KQ	CAM-CAN-CAO	-2.09	117.13	120.19
2	B	1248[A]	9KQ	CAD-C5-C6	-2.07	123.28	126.23
2	B	1248[B]	9KQ	CAD-C5-C4	2.07	120.44	118.33
2	D	1248	9KQ	C6-N1-C2	2.15	120.28	116.35
2	B	1248[B]	9KQ	C6-N1-C2	2.59	121.08	116.35
2	D	1248	9KQ	CAP-C2-N1	2.65	121.90	117.26
2	B	1248[B]	9KQ	C6-C5-C4	2.79	118.93	116.04
2	B	1248[A]	9KQ	C6-N1-C2	3.26	122.32	116.35
2	B	1248[A]	9KQ	C5-C6-NAQ	3.32	124.77	120.23
2	B	1248[A]	9KQ	C6-C5-C4	3.55	119.71	116.04
2	D	1248	9KQ	CAQ-NAQ-C6	4.32	134.50	126.02
2	B	1248[A]	9KQ	C2-N3-C4	5.34	119.85	116.21
2	B	1248[B]	9KQ	C2-N3-C4	5.83	120.18	116.21
2	B	1248[A]	9KQ	CAQ-NAQ-C6	6.55	138.87	126.02
2	D	1248	9KQ	C2-N3-C4	8.79	122.19	116.21

There are no chirality outliers.

All (1) torsion outliers are listed below:

Mol	Chain	Res	Type	Atoms
2	D	1248	9KQ	C5-C6-NAQ-CAQ

There are no ring outliers.

3 monomers are involved in 9 short contacts:

Mol	Chain	Res	Type	Clashes	Symm-Clashes
2	B	1248[A]	9KQ	2	0
2	B	1248[B]	9KQ	4	0
2	D	1248	9KQ	3	0

5.7 Other polymers ⓘ

There are no such residues in this entry.

5.8 Polymer linkage issues ⓘ

There are no chain breaks in this entry.

6 Fit of model and data ⓘ

6.1 Protein, DNA and RNA chains ⓘ

In the following table, the column labelled ‘#RSRZ> 2’ contains the number (and percentage) of RSRZ outliers, followed by percent RSRZ outliers for the chain as percentile scores relative to all X-ray entries and entries of similar resolution. The OWAB column contains the minimum, median, 95th percentile and maximum values of the occupancy-weighted average B-factor per residue. The column labelled ‘Q< 0.9’ lists the number of (and percentage) of residues with an average occupancy less than 0.9.

Mol	Chain	Analysed	<RSRZ>	#RSRZ>2	OWAB(Å ²)	Q<0.9
1	A	239/269 (88%)	0.20	9 (3%) 44 45	17, 28, 64, 88	0
1	B	240/269 (89%)	0.35	17 (7%) 19 20	15, 32, 70, 100	0
1	C	251/269 (93%)	0.28	19 (7%) 17 18	19, 30, 77, 96	0
1	D	246/269 (91%)	0.33	14 (5%) 27 29	17, 29, 81, 110	0
All	All	976/1076 (90%)	0.29	59 (6%) 25 27	15, 30, 75, 110	0

All (59) RSRZ outliers are listed below:

Mol	Chain	Res	Type	RSRZ
1	D	-4	LEU	6.9
1	D	99	VAL	6.3
1	C	198	ALA	5.7
1	B	146	MET	5.3
1	C	91	GLY	5.2
1	B	197	GLU	5.1
1	B	104	ASP	5.0
1	A	146	MET	5.0
1	D	199	GLN	4.7
1	B	148	ASN	4.6
1	B	191	MET	4.4
1	D	191	MET	4.4
1	B	145	ALA	4.3
1	D	190	ASP	4.2
1	B	198	ALA	4.1
1	C	146	MET	4.1
1	C	195	LEU	4.0
1	A	147	GLY	4.0
1	D	100	ARG	3.9
1	B	-2	PHE	3.8
1	C	191	MET	3.7

Continued on next page...

Continued from previous page...

Mol	Chain	Res	Type	RSRZ
1	A	74	GLU	3.7
1	C	197	GLU	3.7
1	B	195	LEU	3.5
1	A	103	ASP	3.4
1	B	-5	ASN	3.3
1	D	194	GLU	3.2
1	C	145	ALA	3.2
1	D	197	GLU	3.2
1	B	-4	LEU	3.2
1	D	-2	PHE	3.2
1	D	189	THR	3.1
1	A	100	ARG	3.1
1	C	147	GLY	3.0
1	A	104	ASP	3.0
1	C	90	ALA	2.9
1	C	-12	GLY	2.9
1	D	195	LEU	2.9
1	D	200	ARG	2.8
1	B	144	GLY	2.8
1	C	190	ASP	2.7
1	C	104	ASP	2.6
1	B	199	GLN	2.6
1	C	193	ARG	2.5
1	B	202	ALA	2.4
1	C	194	GLU	2.4
1	A	148	ASN	2.4
1	C	148	ASN	2.3
1	D	80	LEU	2.3
1	C	144	GLY	2.3
1	A	-1	GLN	2.3
1	B	147	GLY	2.2
1	D	56	GLY	2.2
1	C	196	PRO	2.2
1	C	192	THR	2.1
1	B	194	GLU	2.1
1	B	143	VAL	2.0
1	A	0	SER	2.0
1	C	-13	SER	2.0

6.2 Non-standard residues in protein, DNA, RNA chains ⓘ

There are no non-standard protein/DNA/RNA residues in this entry.

6.3 Carbohydrates [i](#)

There are no carbohydrates in this entry.

6.4 Ligands [i](#)

In the following table, the Atoms column lists the number of modelled atoms in the group and the number defined in the chemical component dictionary. LLDF column lists the quality of electron density of the group with respect to its neighbouring residues in protein, DNA or RNA chains. The B-factors column lists the minimum, median, 95th percentile and maximum values of B factors of atoms in the group. The column labelled 'Q< 0.9' lists the number of atoms with occupancy less than 0.9.

Mol	Type	Chain	Res	Atoms	RSCC	RSR	LLDF	B-factors(\AA^2)	Q<0.9
2	9KQ	D	1248	21/21	0.91	0.15	1.19	23,26,30,32	0
2	9KQ	B	1248[B]	21/21	0.96	0.13	0.83	12,12,14,15	21
2	9KQ	B	1248[A]	21/21	0.96	0.13	0.83	21,28,31,32	21

6.5 Other polymers [i](#)

There are no such residues in this entry.