



Full wwPDB X-ray Structure Validation Report ⓘ

Feb 1, 2016 – 03:10 PM GMT

PDB ID : 4BQC
Title : Crystal structure of the FN5 and FN6 domains of NEO1 bound to SOS
Authors : Bell, C.H.; Healey, E.; vanErp, S.; Bishop, B.; Tang, C.; Gilbert, R.J.C.; Aricescu, A.R.; Pasterkamp, R.J.; Siebold, C.
Deposited on : 2013-05-30
Resolution : 3.20 Å(reported)

This is a Full wwPDB X-ray Structure Validation Report for a publicly released PDB entry.
We welcome your comments at validation@mail.wwpdb.org
A user guide is available at
<http://wwpdb.org/validation/2016/XrayValidationReportHelp>
with specific help available everywhere you see the ⓘ symbol.

The following versions of software and data (see [references ⓘ](#)) were used in the production of this report:

MolProbity : 4.02b-467
Mogul : 1.7 (RC4), CSD as536be (2015)
Xtriage (Phenix) : 1.9-1692
EDS : rb-20026688
Percentile statistics : 20151230.v01 (using entries in the PDB archive December 30th 2015)
Refmac : 5.8.0135
CCP4 : 6.5.0
Ideal geometry (proteins) : Engh & Huber (2001)
Ideal geometry (DNA, RNA) : Parkinson et al. (1996)
Validation Pipeline (wwPDB-VP) : trunk26865

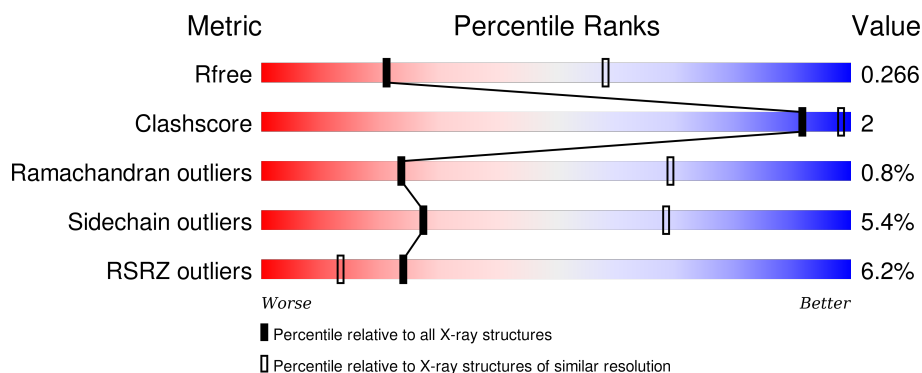
1 Overall quality at a glance

The following experimental techniques were used to determine the structure:

X-RAY DIFFRACTION

The reported resolution of this entry is 3.20 Å.

Percentile scores (ranging between 0-100) for global validation metrics of the entry are shown in the following graphic. The table shows the number of entries on which the scores are based.



Metric	Whole archive (#Entries)	Similar resolution (#Entries, resolution range(Å))
R_{free}	91344	1124 (3.24-3.16)
Clashscore	102246	1024 (3.22-3.18)
Ramachandran outliers	100387	1004 (3.22-3.18)
Sidechain outliers	100360	1003 (3.22-3.18)
RSRZ outliers	91569	1129 (3.24-3.16)

The table below summarises the geometric issues observed across the polymeric chains and their fit to the electron density. The red, orange, yellow and green segments on the lower bar indicate the fraction of residues that contain outliers for ≥ 3 , 2, 1 and 0 types of geometric quality criteria. A grey segment represents the fraction of residues that are not modelled. The numeric value for each fraction is indicated below the corresponding segment, with a dot representing fractions $\leq 5\%$. The upper red bar (where present) indicates the fraction of residues that have poor fit to the electron density. The numeric value is given above the bar.

Mol	Chain	Length	Quality of chain
1	A	264	<div> <div>8%</div> <div>67%</div> <div>6%</div> <div>25%</div> </div>
1	B	264	<div> <div>8%</div> <div>59%</div> <div>7%</div> <div>33%</div> </div>

The following table lists non-polymeric compounds, carbohydrate monomers and non-standard residues in protein, DNA, RNA chains that are outliers for geometric or electron-density-fit criteria:

Mol	Type	Chain	Res	Chirality	Geometry	Clashes	Electron density
4	NA	A	2086	-	-	-	X
4	NA	B	2084	-	-	-	X

2 Entry composition [i](#)

There are 4 unique types of molecules in this entry. The entry contains 3079 atoms, of which 0 are hydrogens and 0 are deuteriums.

In the tables below, the ZeroOcc column contains the number of atoms modelled with zero occupancy, the AltConf column contains the number of residues with at least one atom in alternate conformation and the Trace column contains the number of residues modelled with at most 2 atoms.

- Molecule 1 is a protein called NEOGENIN.

Mol	Chain	Residues	Atoms					ZeroOcc	AltConf	Trace
1	A	197	Total	C	N	O	S	0	0	0
			1555	990	265	294	6			
1	B	176	Total	C	N	O	S	0	0	0
			1398	901	233	260	4			

There are 26 discrepancies between the modelled and reference sequences:

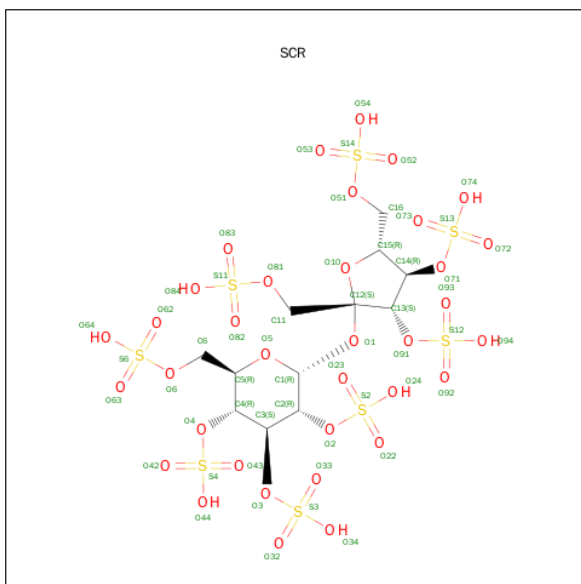
Chain	Residue	Modelled	Actual	Comment	Reference
A	880	GLU	-	EXPRESSION TAG	UNP P97798
A	881	THR	-	EXPRESSION TAG	UNP P97798
A	882	GLY	-	EXPRESSION TAG	UNP P97798
A	1134	ASN	-	EXPRESSION TAG	UNP P97798
A	1135	GLY	-	EXPRESSION TAG	UNP P97798
A	1136	THR	-	EXPRESSION TAG	UNP P97798
A	1137	LYS	-	EXPRESSION TAG	UNP P97798
A	1138	HIS	-	EXPRESSION TAG	UNP P97798
A	1139	HIS	-	EXPRESSION TAG	UNP P97798
A	1140	HIS	-	EXPRESSION TAG	UNP P97798
A	1141	HIS	-	EXPRESSION TAG	UNP P97798
A	1142	HIS	-	EXPRESSION TAG	UNP P97798
A	1143	HIS	-	EXPRESSION TAG	UNP P97798
B	880	GLU	-	EXPRESSION TAG	UNP P97798
B	881	THR	-	EXPRESSION TAG	UNP P97798
B	882	GLY	-	EXPRESSION TAG	UNP P97798
B	1134	ASN	-	EXPRESSION TAG	UNP P97798
B	1135	GLY	-	EXPRESSION TAG	UNP P97798
B	1136	THR	-	EXPRESSION TAG	UNP P97798
B	1137	LYS	-	EXPRESSION TAG	UNP P97798
B	1138	HIS	-	EXPRESSION TAG	UNP P97798
B	1139	HIS	-	EXPRESSION TAG	UNP P97798
B	1140	HIS	-	EXPRESSION TAG	UNP P97798
B	1141	HIS	-	EXPRESSION TAG	UNP P97798
B	1142	HIS	-	EXPRESSION TAG	UNP P97798

Continued on next page...

Continued from previous page...

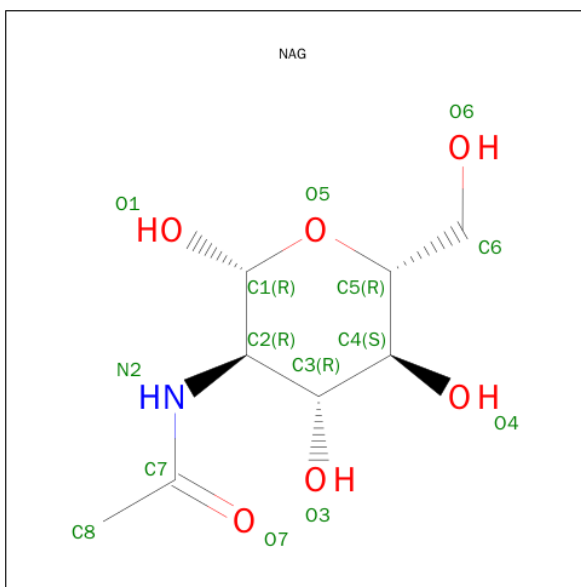
Chain	Residue	Modelled	Actual	Comment	Reference
B	1143	HIS	-	EXPRESSION TAG	UNP P97798

- Molecule 2 is SUGAR (SUCROSE OCTASULFATE) (three-letter code: SCR) (formula: $C_{12}H_{22}O_{35}S_8$).



Mol	Chain	Residues	Atoms				ZeroOcc	AltConf
2	A	1	Total	C	O	S	0	0
			55	12	35	8		
2	B	1	Total	C	O	S	0	0
			55	12	35	8		

- Molecule 3 is SUGAR (N-ACETYL-D-GLUCOSAMINE) (three-letter code: NAG) (formula: $C_8H_{15}NO_6$).



Mol	Chain	Residues	Atoms				ZeroOcc	AltConf
3	A	1	Total	C	N	O	0	0
			14	8	1	5		

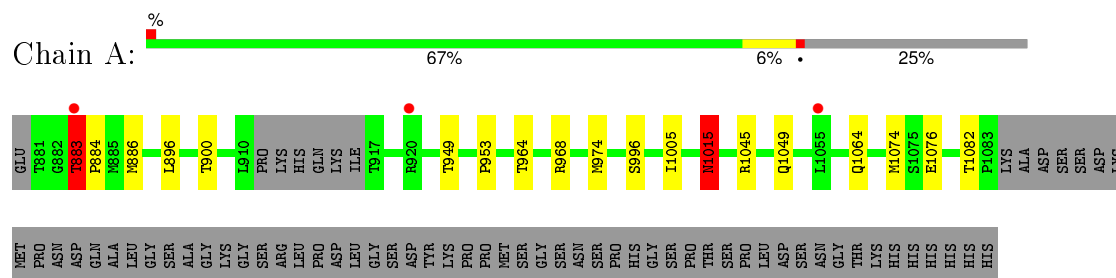
- Molecule 4 is SODIUM ION (three-letter code: NA) (formula: Na).

Mol	Chain	Residues	Atoms		ZeroOcc	AltConf
4	B	1	Total	Na	0	0
			1	1		
4	A	1	Total	Na	0	0
			1	1		

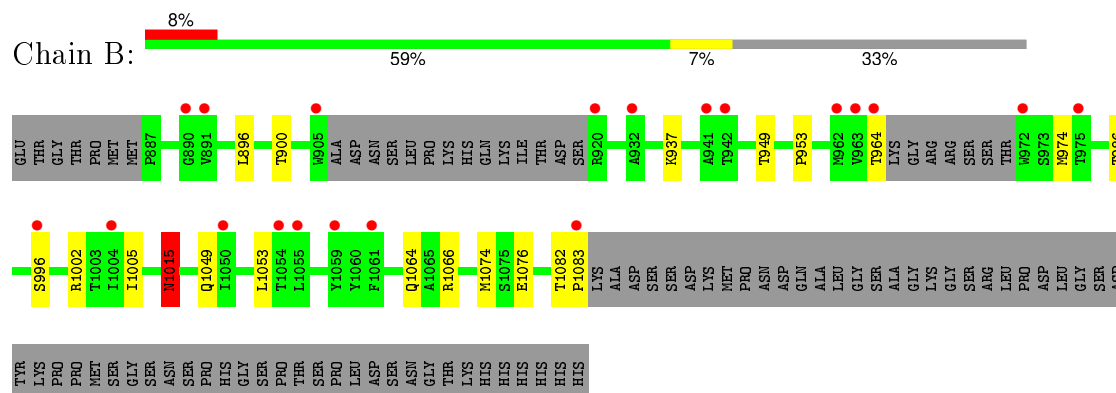
3 Residue-property plots [i](#)

These plots are drawn for all protein, RNA and DNA chains in the entry. The first graphic for a chain summarises the proportions of errors displayed in the second graphic. The second graphic shows the sequence view annotated by issues in geometry and electron density. Residues are color-coded according to the number of geometric quality criteria for which they contain at least one outlier: green = 0, yellow = 1, orange = 2 and red = 3 or more. A red dot above a residue indicates a poor fit to the electron density ($RSRZ > 2$). Stretches of 2 or more consecutive residues without any outlier are shown as a green connector. Residues present in the sample, but not in the model, are shown in grey.

• Molecule 1: NEOGENIN



• Molecule 1: NEOGENIN



4 Data and refinement statistics

Property	Value	Source
Space group	C 2 2 21	Depositor
Cell constants a, b, c, α , β , γ	96.16Å 157.84Å 89.92Å 90.00° 90.00° 90.00°	Depositor
Resolution (Å)	30.00 – 3.20 42.40 – 3.20	Depositor EDS
% Data completeness (in resolution range)	99.5 (30.00-3.20) 99.5 (42.40-3.20)	Depositor EDS
R_{merge}	0.11	Depositor
R_{sym}	(Not available)	Depositor
$\langle I/\sigma(I) \rangle$ ¹	2.37 (at 3.19Å)	Xtriage
Refinement program	BUSTER 2.11.2	Depositor
R, R_{free}	0.217 , 0.259 0.225 , 0.266	Depositor DCC
R_{free} test set	554 reflections (5.04%)	DCC
Wilson B-factor (Å ²)	79.6	Xtriage
Anisotropy	0.590	Xtriage
Bulk solvent k_{sol} (e/Å ³), B_{sol} (Å ²)	0.28 , 65.5	EDS
Estimated twinning fraction	0.000 for 1/2*h-1/2*k,-3/2*h-1/2*k,-l 0.003 for 1/2*h+1/2*k,3/2*h-1/2*k,-l	Xtriage
L-test for twinning ²	$\langle L \rangle = 0.48$, $\langle L^2 \rangle = 0.31$	Xtriage
Outliers	1 of 11559 reflections (0.009%)	Xtriage
F_o, F_c correlation	0.92	EDS
Total number of atoms	3079	wwPDB-VP
Average B, all atoms (Å ²)	102.0	wwPDB-VP

Xtriage's analysis on translational NCS is as follows: *The analyses of the Patterson function reveals a significant off-origin peak that is 37.62 % of the origin peak, indicating pseudo translational symmetry. The chance of finding a peak of this or larger height randomly in a structure without pseudo translational symmetry is equal to 4.1721e-04. The detected translational NCS is most likely also responsible for the elevated intensity ratio.*

¹Intensities estimated from amplitudes.

²Theoretical values of $\langle |L| \rangle$, $\langle L^2 \rangle$ for acentric reflections are 0.5, 0.375 respectively for untwinned datasets, and 0.333, 0.2 for perfectly twinned datasets.

5 Model quality [i](#)

5.1 Standard geometry [i](#)

Bond lengths and bond angles in the following residue types are not validated in this section: NA, NAG, SCR

The Z score for a bond length (or angle) is the number of standard deviations the observed value is removed from the expected value. A bond length (or angle) with $|Z| > 5$ is considered an outlier worth inspection. RMSZ is the root-mean-square of all Z scores of the bond lengths (or angles).

Mol	Chain	Bond lengths		Bond angles	
		RMSZ	$\# Z > 5$	RMSZ	$\# Z > 5$
1	A	0.50	0/1596	0.71	1/2181 (0.0%)
1	B	0.45	0/1437	0.68	0/1966
All	All	0.48	0/3033	0.69	1/4147 (0.0%)

There are no bond length outliers.

All (1) bond angle outliers are listed below:

Mol	Chain	Res	Type	Atoms	Z	Observed(°)	Ideal(°)
1	A	1045	ARG	CD-NE-CZ	5.47	131.25	123.60

There are no chirality outliers.

There are no planarity outliers.

5.2 Too-close contacts [i](#)

In the following table, the Non-H and H(model) columns list the number of non-hydrogen atoms and hydrogen atoms in the chain respectively. The H(added) column lists the number of hydrogen atoms added and optimized by MolProbity. The Clashes column lists the number of clashes within the asymmetric unit, whereas Symm-Clashes lists symmetry related clashes.

Mol	Chain	Non-H	H(model)	H(added)	Clashes	Symm-Clashes
1	A	1555	0	1545	7	0
1	B	1398	0	1387	7	0
2	A	55	0	21	0	0
2	B	55	0	22	0	0
3	A	14	0	13	0	0
4	A	1	0	0	0	0
4	B	1	0	0	0	0
All	All	3079	0	2988	13	0

The all-atom clashscore is defined as the number of clashes found per 1000 atoms (including hydrogen atoms). The all-atom clashscore for this structure is 2.

All (13) close contacts within the same asymmetric unit are listed below, sorted by their clash magnitude.

Atom-1	Atom-2	Interatomic distance (Å)	Clash overlap (Å)
1:A:1005:ILE:HG13	1:A:1049:GLN:HG3	1.94	0.49
1:B:1064:GLN:HB3	1:B:1074:MET:HG2	1.94	0.49
1:B:953:PRO:HB2	1:B:1015:ASN:HB3	1.95	0.48
1:B:1005:ILE:HG13	1:B:1049:GLN:HG3	1.96	0.48
1:A:1064:GLN:HB3	1:A:1074:MET:HG2	1.97	0.47
1:A:953:PRO:HB2	1:A:1015:ASN:HB3	1.97	0.46
1:A:883:THR:HG22	1:A:884:PRO:HA	1.99	0.44
1:B:1002:ARG:HD2	1:B:1053:LEU:O	2.17	0.44
1:A:883:THR:HA	1:A:968:ARG:HH21	1.83	0.44
1:A:896:LEU:HB2	1:A:900:THR:HG22	2.01	0.42
1:B:896:LEU:HB2	1:B:900:THR:HG22	2.02	0.42
1:A:896:LEU:O	1:B:1066:ARG:NH1	2.40	0.41
1:B:986:THR:HG23	1:B:1015:ASN:ND2	2.36	0.40

There are no symmetry-related clashes.

5.3 Torsion angles [i](#)

5.3.1 Protein backbone [i](#)

In the following table, the Percentiles column shows the percent Ramachandran outliers of the chain as a percentile score with respect to all X-ray entries followed by that with respect to entries of similar resolution.

The Analysed column shows the number of residues for which the backbone conformation was analysed, and the total number of residues.

Mol	Chain	Analysed	Favoured	Allowed	Outliers	Percentiles	
1	A	193/264 (73%)	181 (94%)	10 (5%)	2 (1%)	19	65
1	B	170/264 (64%)	160 (94%)	9 (5%)	1 (1%)	30	75
All	All	363/528 (69%)	341 (94%)	19 (5%)	3 (1%)	24	69

All (3) Ramachandran outliers are listed below:

Mol	Chain	Res	Type
1	A	1015	ASN

Continued on next page...

Continued from previous page...

Mol	Chain	Res	Type
1	B	1015	ASN
1	A	883	THR

5.3.2 Protein sidechains ⓘ

In the following table, the Percentiles column shows the percent sidechain outliers of the chain as a percentile score with respect to all X-ray entries followed by that with respect to entries of similar resolution.

The Analysed column shows the number of residues for which the sidechain conformation was analysed, and the total number of residues.

Mol	Chain	Analysed	Rotameric	Outliers	Percentiles	
1	A	175/232 (75%)	166 (95%)	9 (5%)	29	70
1	B	156/232 (67%)	147 (94%)	9 (6%)	25	66
All	All	331/464 (71%)	313 (95%)	18 (5%)	27	68

All (18) residues with a non-rotameric sidechain are listed below:

Mol	Chain	Res	Type
1	A	883	THR
1	A	886	MET
1	A	949	THR
1	A	964	THR
1	A	974	MET
1	A	996	SER
1	A	1015	ASN
1	A	1076	GLU
1	A	1082	THR
1	B	937	LYS
1	B	949	THR
1	B	964	THR
1	B	974	MET
1	B	996	SER
1	B	1015	ASN
1	B	1076	GLU
1	B	1082	THR
1	B	1083	PRO

Some sidechains can be flipped to improve hydrogen bonding and reduce clashes. There are no such sidechains identified.

5.3.3 RNA ⓘ

There are no RNA molecules in this entry.

5.4 Non-standard residues in protein, DNA, RNA chains ⓘ

There are no non-standard protein/DNA/RNA residues in this entry.

5.5 Carbohydrates ⓘ

There are no carbohydrates in this entry.

5.6 Ligand geometry ⓘ

Of 5 ligands modelled in this entry, 2 are monoatomic - leaving 3 for Mogul analysis.

In the following table, the Counts columns list the number of bonds (or angles) for which Mogul statistics could be retrieved, the number of bonds (or angles) that are observed in the model and the number of bonds (or angles) that are defined in the chemical component dictionary. The Link column lists molecule types, if any, to which the group is linked. The Z score for a bond length (or angle) is the number of standard deviations the observed value is removed from the expected value. A bond length (or angle) with $|Z| > 2$ is considered an outlier worth inspection. RMSZ is the root-mean-square of all Z scores of the bond lengths (or angles).

Mol	Type	Chain	Res	Link	Bond lengths			Bond angles		
					Counts	RMSZ	$\# Z > 2$	Counts	RMSZ	$\# Z > 2$
2	SCR	A	2084	-	56,56,56	1.95	26 (46%)	79,92,92	1.81	17 (21%)
3	NAG	A	2085	1	14,14,15	0.36	0	15,19,21	0.47	0
2	SCR	B	2085	-	56,56,56	1.72	24 (42%)	79,92,92	1.49	9 (11%)

In the following table, the Chirals column lists the number of chiral outliers, the number of chiral centers analysed, the number of these observed in the model and the number defined in the chemical component dictionary. Similar counts are reported in the Torsion and Rings columns. '-' means no outliers of that kind were identified.

Mol	Type	Chain	Res	Link	Chirals	Torsions	Rings
2	SCR	A	2084	-	-	0/48/88/88	0/2/2/2
3	NAG	A	2085	1	-	0/6/23/26	0/1/1/1
2	SCR	B	2085	-	-	0/48/88/88	0/2/2/2

All (50) bond length outliers are listed below:

Mol	Chain	Res	Type	Atoms	Z	Observed(Å)	Ideal(Å)
2	A	2084	SCR	O1-C12	2.02	1.52	1.43
2	B	2085	SCR	O5-C5	2.04	1.49	1.44
2	A	2084	SCR	O53-S14	2.05	1.52	1.45
2	B	2085	SCR	O10-C12	2.12	1.47	1.42
2	B	2085	SCR	C12-C13	2.16	1.57	1.54
2	B	2085	SCR	O53-S14	2.19	1.53	1.45
2	B	2085	SCR	O22-S2	2.20	1.53	1.45
2	A	2084	SCR	O2-C2	2.20	1.51	1.46
2	A	2084	SCR	O5-C1	2.21	1.47	1.41
2	B	2085	SCR	O42-S4	2.22	1.53	1.45
2	B	2085	SCR	O52-S14	2.23	1.53	1.45
2	A	2084	SCR	O52-S14	2.23	1.53	1.45
2	B	2085	SCR	O83-S11	2.23	1.53	1.45
2	A	2084	SCR	O33-S3	2.24	1.53	1.45
2	B	2085	SCR	O5-C1	2.24	1.47	1.41
2	A	2084	SCR	O42-S4	2.25	1.53	1.45
2	A	2084	SCR	O93-S12	2.26	1.53	1.45
2	B	2085	SCR	O93-S12	2.26	1.53	1.45
2	B	2085	SCR	O73-S13	2.27	1.53	1.45
2	B	2085	SCR	O63-S6	2.27	1.53	1.45
2	B	2085	SCR	O82-S11	2.28	1.53	1.45
2	B	2085	SCR	O62-S6	2.28	1.53	1.45
2	A	2084	SCR	O23-S2	2.29	1.53	1.45
2	B	2085	SCR	O23-S2	2.30	1.53	1.45
2	A	2084	SCR	O1-C1	2.31	1.51	1.40
2	B	2085	SCR	O92-S12	2.32	1.53	1.45
2	A	2084	SCR	O92-S12	2.32	1.53	1.45
2	A	2084	SCR	O32-S3	2.35	1.53	1.45
2	B	2085	SCR	O43-S4	2.37	1.53	1.45
2	A	2084	SCR	O83-S11	2.38	1.53	1.45
2	B	2085	SCR	O33-S3	2.38	1.53	1.45
2	B	2085	SCR	C4-C5	2.39	1.59	1.52
2	A	2084	SCR	O73-S13	2.40	1.53	1.45
2	A	2084	SCR	O72-S13	2.41	1.54	1.45
2	B	2085	SCR	O32-S3	2.44	1.54	1.45
2	B	2085	SCR	O72-S13	2.45	1.54	1.45
2	A	2084	SCR	O63-S6	2.48	1.54	1.45
2	A	2084	SCR	O62-S6	2.49	1.54	1.45
2	A	2084	SCR	O43-S4	2.52	1.54	1.45
2	A	2084	SCR	O82-S11	2.52	1.54	1.45
2	A	2084	SCR	C12-C13	2.58	1.58	1.54
2	B	2085	SCR	C3-C2	2.58	1.57	1.52
2	A	2084	SCR	C4-C5	2.62	1.60	1.52

Continued on next page...

Continued from previous page...

Mol	Chain	Res	Type	Atoms	Z	Observed(Å)	Ideal(Å)
2	A	2084	SCR	O4-C4	2.62	1.51	1.46
2	B	2085	SCR	C11-C12	2.93	1.55	1.52
2	A	2084	SCR	C3-C2	3.01	1.58	1.52
2	B	2085	SCR	C4-C3	3.86	1.60	1.52
2	A	2084	SCR	O10-C12	4.22	1.52	1.42
2	A	2084	SCR	C4-C3	4.35	1.61	1.52
2	A	2084	SCR	C11-C12	4.46	1.57	1.52

All (26) bond angle outliers are listed below:

Mol	Chain	Res	Type	Atoms	Z	Observed(°)	Ideal(°)
2	A	2084	SCR	O10-C15-C14	-3.49	97.63	103.52
2	A	2084	SCR	C15-C14-C13	-2.83	94.23	103.40
2	B	2085	SCR	O1-C12-O10	-2.16	103.66	110.52
2	A	2084	SCR	O3-C3-C4	2.02	112.95	108.48
2	A	2084	SCR	O3-C3-C2	2.08	113.08	108.48
2	B	2085	SCR	C14-O71-S13	2.47	123.48	118.77
2	B	2085	SCR	O4-C4-C3	2.48	113.97	108.48
2	A	2084	SCR	O1-C1-C2	2.61	112.42	107.57
2	A	2084	SCR	C4-C3-C2	2.62	116.22	110.43
2	A	2084	SCR	C3-C4-C5	2.68	116.36	110.55
2	B	2085	SCR	O2-C2-C1	2.72	111.35	107.65
2	A	2084	SCR	O71-C14-C15	2.74	116.27	109.09
2	A	2084	SCR	O2-C2-C3	2.76	114.59	108.48
2	A	2084	SCR	C2-O2-S2	2.76	124.04	118.77
2	A	2084	SCR	O51-C16-C15	2.85	113.38	107.90
2	B	2085	SCR	C3-O3-S3	2.96	124.41	118.77
2	A	2084	SCR	O5-C5-C4	2.99	116.05	109.75
2	A	2084	SCR	O91-C13-C14	3.08	118.73	108.80
2	B	2085	SCR	C2-O2-S2	3.31	125.08	118.77
2	A	2084	SCR	O71-C14-C13	3.66	118.69	109.09
2	B	2085	SCR	C12-O1-C1	3.68	127.22	117.53
2	A	2084	SCR	O2-C2-C1	3.69	112.68	107.65
2	B	2085	SCR	C13-O91-S12	4.38	125.92	118.36
2	B	2085	SCR	C4-O4-S4	5.72	129.67	118.77
2	A	2084	SCR	C4-O4-S4	5.80	129.82	118.77
2	A	2084	SCR	O10-C15-C16	5.95	123.03	109.49

There are no chirality outliers.

There are no torsion outliers.

There are no ring outliers.

No monomer is involved in short contacts.

5.7 Other polymers

There are no such residues in this entry.

5.8 Polymer linkage issues

There are no chain breaks in this entry.

6 Fit of model and data

6.1 Protein, DNA and RNA chains

In the following table, the column labelled ‘#RSRZ> 2’ contains the number (and percentage) of RSRZ outliers, followed by percent RSRZ outliers for the chain as percentile scores relative to all X-ray entries and entries of similar resolution. The OWAB column contains the minimum, median, 95th percentile and maximum values of the occupancy-weighted average B-factor per residue. The column labelled ‘Q< 0.9’ lists the number of (and percentage) of residues with an average occupancy less than 0.9.

Mol	Chain	Analysed	<RSRZ>	#RSRZ>2	OWAB(Å ²)	Q<0.9
1	A	197/264 (74%)	0.15	3 (1%) 76 63	47, 77, 126, 145	0
1	B	176/264 (66%)	0.61	20 (11%) 7 4	57, 116, 178, 201	0
All	All	373/528 (70%)	0.36	23 (6%) 24 13	47, 91, 167, 201	0

All (23) RSRZ outliers are listed below:

Mol	Chain	Res	Type	RSRZ
1	B	1055	LEU	4.7
1	B	964	THR	3.3
1	B	972	TRP	3.2
1	B	920	ARG	3.0
1	B	1054	THR	2.9
1	B	1083	PRO	2.9
1	B	891	VAL	2.9
1	B	975	THR	2.8
1	B	942	THR	2.7
1	B	905	TRP	2.6
1	B	996	SER	2.6
1	B	962	MET	2.6
1	B	963	VAL	2.4
1	B	1004	ILE	2.4
1	B	1050	ILE	2.4
1	B	890	GLY	2.3
1	B	1059	TYR	2.3
1	B	932	ALA	2.2
1	A	883	THR	2.2
1	B	941	ALA	2.2
1	A	1055	LEU	2.2
1	A	920	ARG	2.1
1	B	1061	PHE	2.1

6.2 Non-standard residues in protein, DNA, RNA chains [i](#)

There are no non-standard protein/DNA/RNA residues in this entry.

6.3 Carbohydrates [i](#)

There are no carbohydrates in this entry.

6.4 Ligands [i](#)

In the following table, the Atoms column lists the number of modelled atoms in the group and the number defined in the chemical component dictionary. LLDF column lists the quality of electron density of the group with respect to its neighbouring residues in protein, DNA or RNA chains. The B-factors column lists the minimum, median, 95th percentile and maximum values of B factors of atoms in the group. The column labelled 'Q< 0.9' lists the number of atoms with occupancy less than 0.9.

Mol	Type	Chain	Res	Atoms	RSCC	RSR	LLDF	B-factors(\AA^2)	Q<0.9
4	NA	A	2086	1/1	0.97	0.46	7.03	51,51,51,51	0
4	NA	B	2084	1/1	0.95	0.32	2.85	71,71,71,71	0
2	SCR	A	2084	55/55	0.72	0.18	-1.23	136,164,180,180	0
2	SCR	B	2085	55/55	0.61	0.23	-	228,236,245,246	0
3	NAG	A	2085	14/15	0.86	0.18	-	102,107,115,119	0

6.5 Other polymers [i](#)

There are no such residues in this entry.