



Full wwPDB X-ray Structure Validation Report ⓘ

Feb 1, 2016 – 12:49 AM GMT

PDB ID : 2BTE
Title : THERMUS THERMOPHILUS LEUCYL-TRNA SYNTHETASE COM-
PLEXED WITH WITH A TRNALEU TRANSCRIPT IN THE POST-
EDITING CONFORMATION AND A POST-TRANSFER EDITING SUB-
STRATE ANALOGUE
Authors : Cusack, S.; Tukalo, M.; Yaremchuk, A.; Fukunaga, R.; Yokoyama, S.
Deposited on : 2005-05-31
Resolution : 2.90 Å(reported)

This is a Full wwPDB X-ray Structure Validation Report for a publicly released PDB entry.
We welcome your comments at validation@mail.wwpdb.org
A user guide is available at
<http://wwpdb.org/validation/2016/XrayValidationReportHelp>
with specific help available everywhere you see the ⓘ symbol.

The following versions of software and data (see [references ⓘ](#)) were used in the production of this report:

MolProbity : 4.02b-467
Mogul : 1.7 (RC4), CSD as536be (2015)
Xtriage (Phenix) : 1.9-1692
EDS : rb-20026688
Percentile statistics : 20151230.v01 (using entries in the PDB archive December 30th 2015)
Refmac : 5.8.0135
CCP4 : 6.5.0
Ideal geometry (proteins) : Engh & Huber (2001)
Ideal geometry (DNA, RNA) : Parkinson et al. (1996)
Validation Pipeline (wwPDB-VP) : trunk26865

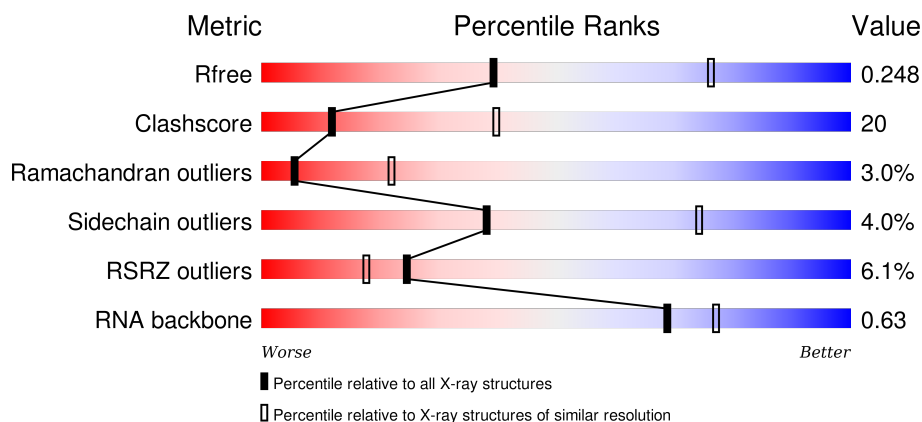
1 Overall quality at a glance

The following experimental techniques were used to determine the structure:

X-RAY DIFFRACTION

The reported resolution of this entry is 2.90 Å.

Percentile scores (ranging between 0-100) for global validation metrics of the entry are shown in the following graphic. The table shows the number of entries on which the scores are based.



Metric	Whole archive (#Entries)	Similar resolution (#Entries, resolution range(Å))
R_{free}	91344	1451 (2.90-2.90)
Clashscore	102246	1668 (2.90-2.90)
Ramachandran outliers	100387	1630 (2.90-2.90)
Sidechain outliers	100360	1632 (2.90-2.90)
RSRZ outliers	91569	1456 (2.90-2.90)
RNA backbone	2183	1093 (3.30-2.50)

The table below summarises the geometric issues observed across the polymeric chains and their fit to the electron density. The red, orange, yellow and green segments on the lower bar indicate the fraction of residues that contain outliers for ≥ 3 , 2, 1 and 0 types of geometric quality criteria. A grey segment represents the fraction of residues that are not modelled. The numeric value for each fraction is indicated below the corresponding segment, with a dot representing fractions $\leq 5\%$. The upper red bar (where present) indicates the fraction of residues that have poor fit to the electron density. The numeric value is given above the bar.

Mol	Chain	Length	Quality of chain
1	A	878	<div> <div>4%</div> <div>58% 37%</div> <div>.</div> </div>
1	D	878	<div> <div>9%</div> <div>58% 38%</div> <div>.</div> </div>
2	B	83	<div> <div>6%</div> <div>42% 34% 17%</div> <div>6%</div> </div>
2	E	83	<div> <div>6%</div> <div>46% 40% 7%</div> <div>6%</div> </div>

The following table lists non-polymeric compounds, carbohydrate monomers and non-standard residues in protein, DNA, RNA chains that are outliers for geometric or electron-density-fit criteria:

Mol	Type	Chain	Res	Chirality	Geometry	Clashes	Electron density
6	SO4	A	1890	-	-	-	X

2 Entry composition [i](#)

There are 9 unique types of molecules in this entry. The entry contains 17815 atoms, of which 0 are hydrogens and 0 are deuteriums.

In the tables below, the ZeroOcc column contains the number of atoms modelled with zero occupancy, the AltConf column contains the number of residues with at least one atom in alternate conformation and the Trace column contains the number of residues modelled with at most 2 atoms.

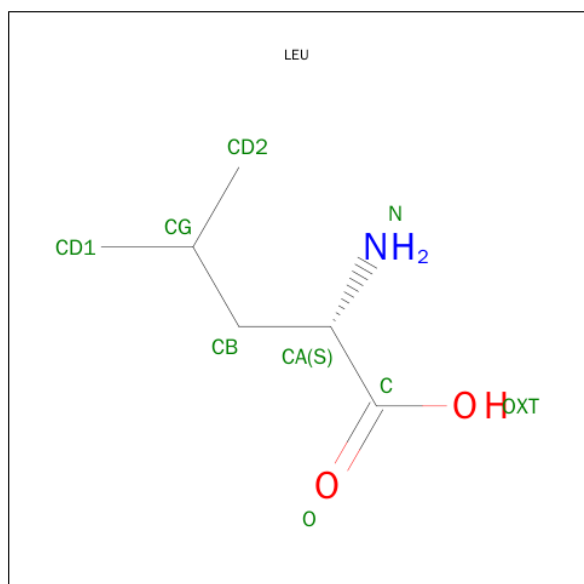
- Molecule 1 is a protein called AMINOACYL-TRNA SYNTHETASE.

Mol	Chain	Residues	Atoms					ZeroOcc	AltConf	Trace
1	A	876	Total	C	N	O	S	0	0	0
			7122	4593	1223	1275	31			
1	D	876	Total	C	N	O	S	0	0	0
			7122	4593	1223	1275	31			

- Molecule 2 is a RNA chain called TRNALEU TRANSCRIPT WITH ANTICODON CAG.

Mol	Chain	Residues	Atoms					ZeroOcc	AltConf	Trace
2	B	78	Total	C	N	O	P	0	0	0
			1676	745	309	544	78			
2	E	78	Total	C	N	O	P	0	0	0
			1676	745	309	544	78			

- Molecule 3 is LEUCINE (three-letter code: LEU) (formula: C₆H₁₃NO₂).



Mol	Chain	Residues	Atoms				ZeroOcc	AltConf
3	A	1	Total	C	N	O	0	0
			9	6	1	2		
3	D	1	Total	C	N	O	0	0
			9	6	1	2		

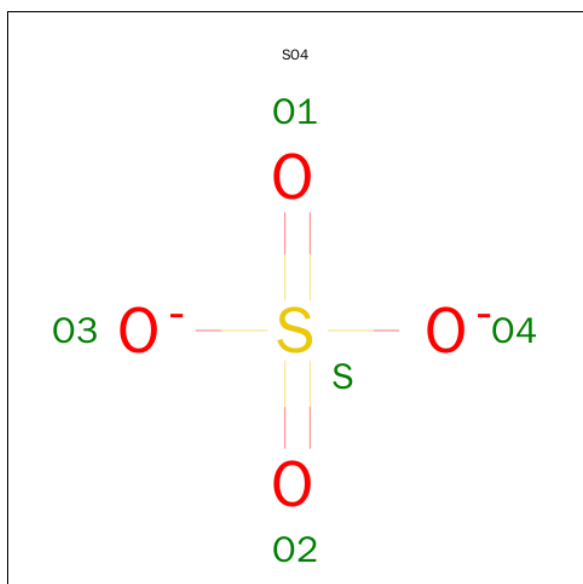
- Molecule 4 is ZINC ION (three-letter code: ZN) (formula: Zn).

Mol	Chain	Residues	Atoms		ZeroOcc	AltConf
4	A	2	Total	Zn	0	0
			2	2		
4	D	2	Total	Zn	0	0
			2	2		

- Molecule 5 is MERCURY (II) ION (three-letter code: HG) (formula: Hg).

Mol	Chain	Residues	Atoms		ZeroOcc	AltConf
5	A	1	Total	Hg	0	0
			1	1		
5	D	1	Total	Hg	0	0
			1	1		

- Molecule 6 is SULFATE ION (three-letter code: SO4) (formula: O₄S).



Mol	Chain	Residues	Atoms			ZeroOcc	AltConf
6	A	1	Total	O	S	0	0
			5	4	1		

Continued on next page...

Continued from previous page...

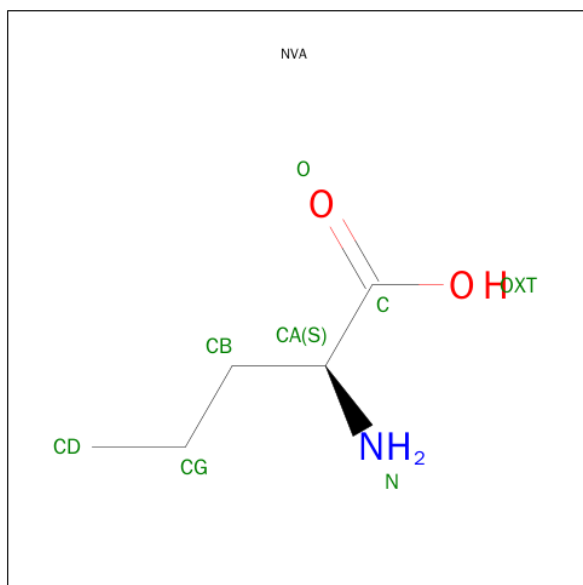
Mol	Chain	Residues	Atoms			ZeroOcc	AltConf
6	A	1	Total	O	S	0	0
			5	4	1		
6	A	1	Total	O	S	0	0
			5	4	1		
6	A	1	Total	O	S	0	0
			5	4	1		
6	A	1	Total	O	S	0	0
			5	4	1		
6	A	1	Total	O	S	0	0
			5	4	1		
6	A	1	Total	O	S	0	0
			5	4	1		
6	A	1	Total	O	S	0	0
			5	4	1		
6	A	1	Total	O	S	0	0
			5	4	1		
6	A	1	Total	O	S	0	0
			5	4	1		
6	D	1	Total	O	S	0	0
			5	4	1		
6	D	1	Total	O	S	0	0
			5	4	1		
6	D	1	Total	O	S	0	0
			5	4	1		
6	D	1	Total	O	S	0	0
			5	4	1		
6	D	1	Total	O	S	0	0
			5	4	1		
6	D	1	Total	O	S	0	0
			5	4	1		
6	D	1	Total	O	S	0	0
			5	4	1		
6	D	1	Total	O	S	0	0
			5	4	1		

Continued on next page...

Continued from previous page...

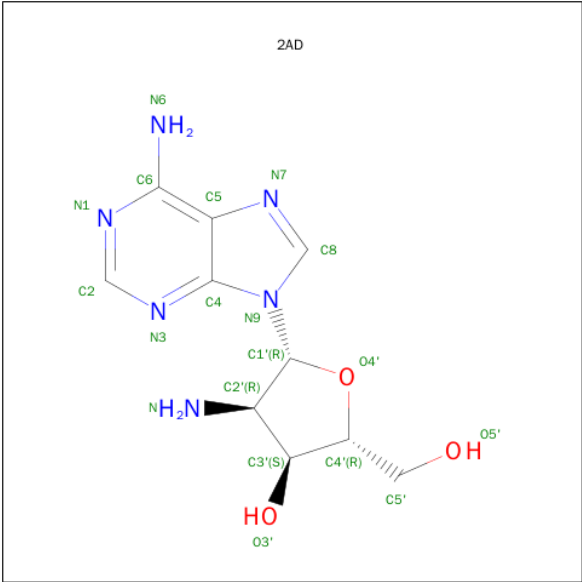
Mol	Chain	Residues	Atoms			ZeroOcc	AltConf
6	D	1	Total	O	S	0	0
			5	4	1		
6	D	1	Total	O	S	0	0
			5	4	1		
6	D	1	Total	O	S	0	0
			5	4	1		

- Molecule 7 is NORVALINE (three-letter code: NVA) (formula: $C_5H_{11}NO_2$).



Mol	Chain	Residues	Atoms				ZeroOcc	AltConf
7	A	1	Total	C	N	O	0	0
			7	5	1	1		
7	D	1	Total	C	N	O	0	0
			7	5	1	1		

- Molecule 8 is 2'-AMINO-2'-DEOXYADENOSINE (three-letter code: 2AD) (formula: $C_{10}H_{14}N_6O_3$).



Mol	Chain	Residues	Atoms				ZeroOcc	AltConf
8	A	1	Total	C	N	O	0	0
			19	10	6	3		
8	D	1	Total	C	N	O	0	0
			19	10	6	3		

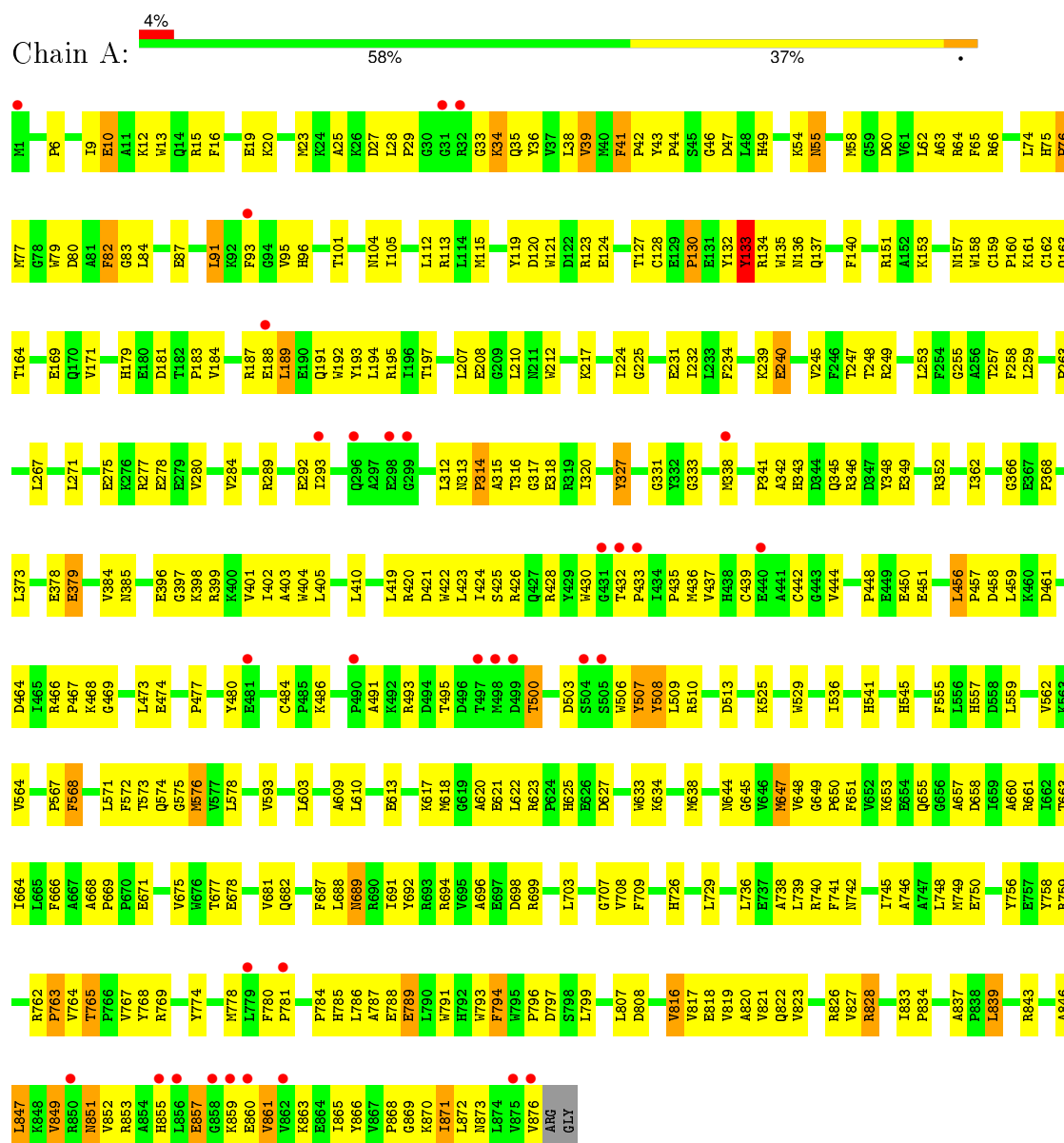
- Molecule 9 is water.

Mol	Chain	Residues	Atoms		ZeroOcc	AltConf
9	A	8	Total	O	0	0
			8	8		
9	B	5	Total	O	0	0
			5	5		
9	D	1	Total	O	0	0
			1	1		
9	E	4	Total	O	0	0
			4	4		

3 Residue-property plots

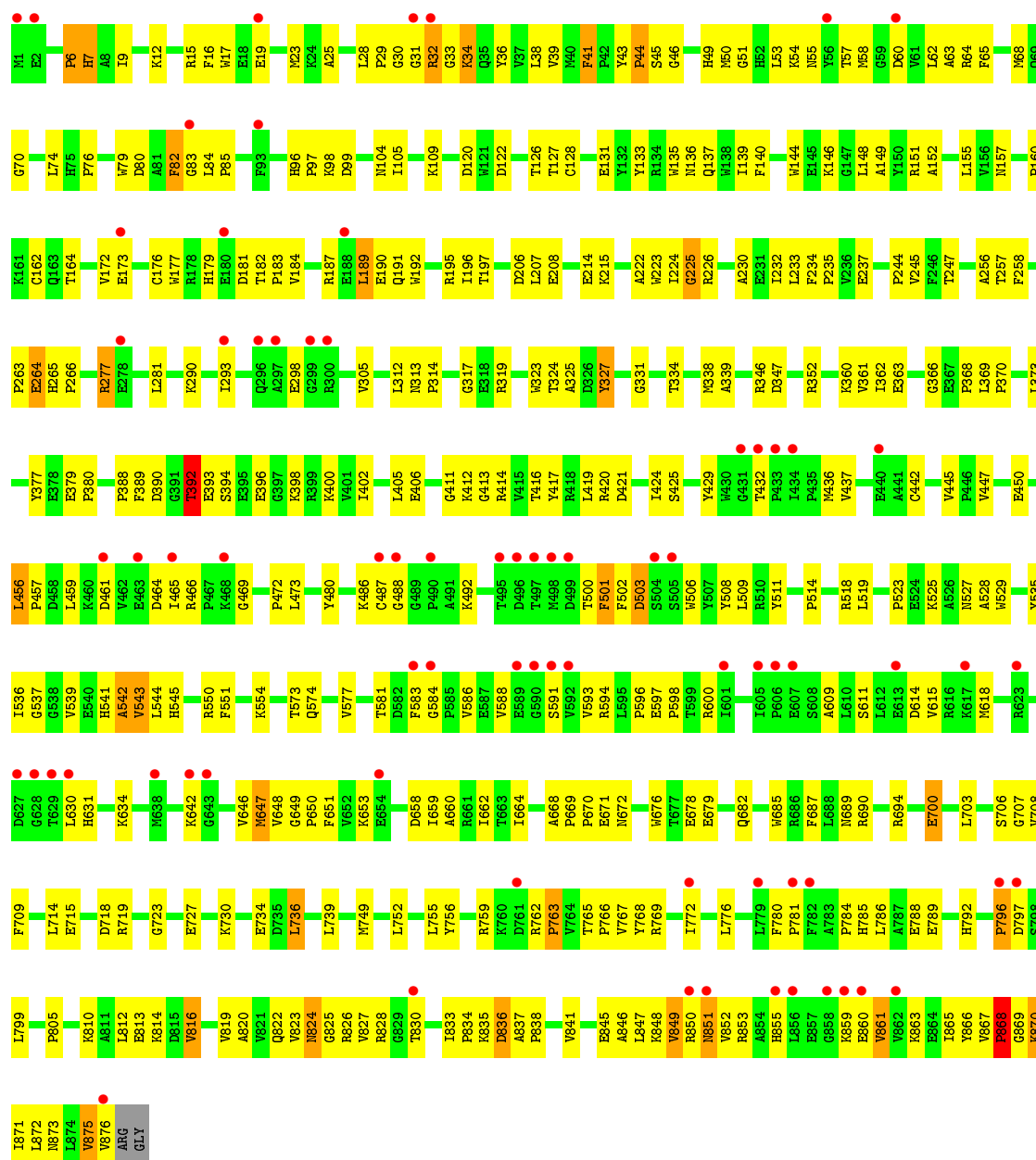
These plots are drawn for all protein, RNA and DNA chains in the entry. The first graphic for a chain summarises the proportions of errors displayed in the second graphic. The second graphic shows the sequence view annotated by issues in geometry and electron density. Residues are color-coded according to the number of geometric quality criteria for which they contain at least one outlier: green = 0, yellow = 1, orange = 2 and red = 3 or more. A red dot above a residue indicates a poor fit to the electron density ($RSRZ > 2$). Stretches of 2 or more consecutive residues without any outlier are shown as a green connector. Residues present in the sample, but not in the model, are shown in grey.

• Molecule 1: AMINOACYL-TRNA SYNTHETASE

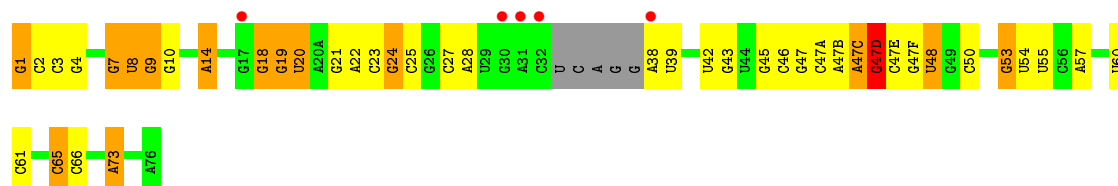
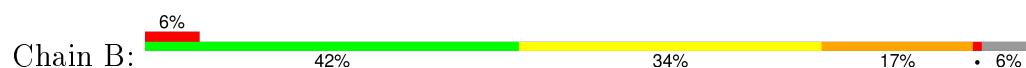


• Molecule 1: AMINOACYL-TRNA SYNTHETASE



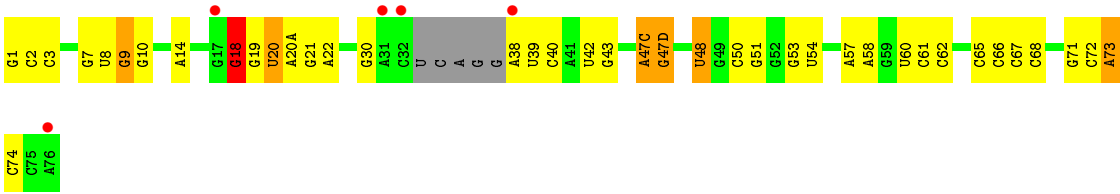


• Molecule 2: TRNALEU TRANSCRIPT WITH ANTICODON CAG



• Molecule 2: TRNALEU TRANSCRIPT WITH ANTICODON CAG





4 Data and refinement statistics

Property	Value	Source
Space group	C 1 2 1	Depositor
Cell constants a, b, c, α , β , γ	204.12Å 125.70Å 175.43Å 90.00° 120.86° 90.00°	Depositor
Resolution (Å)	24.89 – 2.90 24.89 – 2.90	Depositor EDS
% Data completeness (in resolution range)	93.6 (24.89-2.90) 93.7 (24.89-2.90)	Depositor EDS
R_{merge}	0.11	Depositor
R_{sym}	(Not available)	Depositor
$\langle I/\sigma(I) \rangle$ ¹	2.59 (at 2.89Å)	Xtriage
Refinement program	CNS 1.0	Depositor
R, R_{free}	0.217 , 0.253 0.218 , 0.248	Depositor DCC
R_{free} test set	2369 reflections (3.00%)	DCC
Wilson B-factor (Å ²)	63.0	Xtriage
Anisotropy	0.168	Xtriage
Bulk solvent k_{sol} (e/Å ³), B_{sol} (Å ²)	0.33 , 81.2	EDS
Estimated twinning fraction	No twinning to report.	Xtriage
L-test for twinning ²	$\langle L \rangle = 0.47$, $\langle L^2 \rangle = 0.30$	Xtriage
Outliers	0 of 78937 reflections	Xtriage
F_o, F_c correlation	0.93	EDS
Total number of atoms	17815	wwPDB-VP
Average B, all atoms (Å ²)	82.0	wwPDB-VP

Xtriage's analysis on translational NCS is as follows: *The largest off-origin peak in the Patterson function is 3.15% of the height of the origin peak. No significant pseudotranslation is detected.*

¹Intensities estimated from amplitudes.

²Theoretical values of $\langle |L| \rangle$, $\langle L^2 \rangle$ for acentric reflections are 0.5, 0.375 respectively for untwinned datasets, and 0.333, 0.2 for perfectly twinned datasets.

5 Model quality [i](#)

5.1 Standard geometry [i](#)

Bond lengths and bond angles in the following residue types are not validated in this section: HG, 2AD, ZN, NVA, SO4

The Z score for a bond length (or angle) is the number of standard deviations the observed value is removed from the expected value. A bond length (or angle) with $|Z| > 5$ is considered an outlier worth inspection. RMSZ is the root-mean-square of all Z scores of the bond lengths (or angles).

Mol	Chain	Bond lengths		Bond angles	
		RMSZ	$\# Z > 5$	RMSZ	$\# Z > 5$
1	A	0.48	0/7327	0.65	0/9945
1	D	0.38	0/7327	0.54	0/9945
2	B	0.63	1/1873 (0.1%)	0.83	5/2917 (0.2%)
2	E	0.58	1/1873 (0.1%)	0.76	3/2917 (0.1%)
All	All	0.48	2/18400 (0.0%)	0.65	8/25724 (0.0%)

Chiral center outliers are detected by calculating the chiral volume of a chiral center and verifying if the center is modelled as a planar moiety or with the opposite hand. A planarity outlier is detected by checking planarity of atoms in a peptide group, atoms in a mainchain group or atoms of a sidechain that are expected to be planar.

Mol	Chain	#Chirality outliers	#Planarity outliers
1	A	0	2
2	B	0	4
All	All	0	6

All (2) bond length outliers are listed below:

Mol	Chain	Res	Type	Atoms	Z	Observed(Å)	Ideal(Å)
2	B	1	G	OP3-P	-7.19	1.52	1.61
2	E	1	G	OP3-P	-6.97	1.52	1.61

All (8) bond angle outliers are listed below:

Mol	Chain	Res	Type	Atoms	Z	Observed(°)	Ideal(°)
2	B	9	G	N9-C1'-C2'	10.60	127.78	114.00
2	B	48	U	C5'-C4'-C3'	-7.96	103.26	116.00
2	B	65	C	O4'-C1'-N1	6.01	113.01	108.20
2	E	21	G	N9-C1'-C2'	5.82	121.57	114.00
2	E	18	G	C2'-C3'-O3'	5.34	122.25	113.70

Continued on next page...

Continued from previous page...

Mol	Chain	Res	Type	Atoms	Z	Observed(°)	Ideal(°)
2	B	47(F)	G	OP2-P-O3'	5.22	116.69	105.20
2	E	9	G	N9-C1'-C2'	5.17	120.73	114.00
2	B	53	G	O4'-C1'-N9	5.14	112.32	108.20

There are no chirality outliers.

All (6) planarity outliers are listed below:

Mol	Chain	Res	Type	Group
1	A	133	TYR	Sidechain
1	A	507	TYR	Sidechain
2	B	14	A	Sidechain
2	B	21	G	Sidechain
2	B	24	G	Sidechain
2	B	47(D)	G	Sidechain

5.2 Too-close contacts

In the following table, the Non-H and H(model) columns list the number of non-hydrogen atoms and hydrogen atoms in the chain respectively. The H(added) column lists the number of hydrogen atoms added and optimized by MolProbity. The Clashes column lists the number of clashes within the asymmetric unit, whereas Symm-Clashes lists symmetry related clashes.

Mol	Chain	Non-H	H(model)	H(added)	Clashes	Symm-Clashes
1	A	7122	0	7031	317	0
1	D	7122	0	7031	290	0
2	B	1676	0	849	34	0
2	E	1676	0	849	38	0
3	A	9	0	10	0	0
3	D	9	0	10	1	0
4	A	2	0	0	0	0
4	D	2	0	0	0	0
5	A	1	0	0	0	0
5	D	1	0	0	0	0
6	A	60	0	0	0	0
6	D	65	0	0	0	0
7	A	7	0	10	2	0
7	D	7	0	10	0	0
8	A	19	0	12	3	0
8	D	19	0	12	1	0
9	A	8	0	0	1	0
9	B	5	0	0	2	0

Continued on next page...

Continued from previous page...

Mol	Chain	Non-H	H(model)	H(added)	Clashes	Symm-Clashes
9	D	1	0	0	0	0
9	E	4	0	0	0	0
All	All	17815	0	15824	672	0

The all-atom clashscore is defined as the number of clashes found per 1000 atoms (including hydrogen atoms). The all-atom clashscore for this structure is 20.

All (672) close contacts within the same asymmetric unit are listed below, sorted by their clash magnitude.

Atom-1	Atom-2	Interatomic distance (Å)	Clash overlap (Å)
1:D:826:ARG:HB2	1:D:828:ARG:HH21	1.12	1.08
1:D:826:ARG:HB2	1:D:828:ARG:NH2	1.80	0.96
1:D:851:ASN:HD22	1:D:853:ARG:HG3	1.30	0.94
1:D:62:LEU:HD11	1:D:739:LEU:HD11	1.47	0.93
1:A:839:LEU:H	1:A:839:LEU:HD12	1.33	0.92
1:A:687:PHE:O	1:A:691:ILE:HG13	1.72	0.89
1:A:821:VAL:HG13	1:A:872:LEU:HD23	1.56	0.88
1:D:870:LYS:O	1:D:871:ILE:HD12	1.75	0.87
1:A:688:LEU:HA	1:A:691:ILE:HD12	1.57	0.86
1:D:852:VAL:HG12	1:D:855:HIS:HB2	1.57	0.86
1:D:679:GLU:HA	1:D:682:GLN:HE21	1.40	0.86
1:D:649:GLY:O	1:D:653:LYS:HG2	1.74	0.86
1:A:183:PRO:HB3	1:A:293:ILE:HD12	1.60	0.83
1:D:277:ARG:HH11	1:D:277:ARG:HB2	1.45	0.80
1:D:581:THR:HG21	1:D:642:LYS:HD2	1.62	0.79
1:D:824:ASN:HD21	1:D:876:VAL:HB	1.46	0.79
2:B:47(C):A:H5'	2:B:47(D):G:OP2	1.84	0.78
1:D:39:VAL:HG12	1:D:536:ILE:HB	1.65	0.78
1:D:34:LYS:HD2	1:D:34:LYS:C	2.04	0.78
1:A:726:HIS:HD2	1:A:808:ASP:H	1.28	0.78
1:A:823:VAL:HG23	1:A:828:ARG:HG3	1.65	0.77
1:D:189:LEU:HD22	1:D:191:GLN:HE21	1.49	0.77
1:D:224:ILE:HA	1:D:419:LEU:HB2	1.67	0.77
2:E:14:A:H1'	2:E:22:A:N7	2.01	0.76
1:A:726:HIS:CD2	1:A:808:ASP:H	2.03	0.76
1:A:331:GLY:HA3	1:A:420:ARG:HH22	1.50	0.76
1:D:83:GLY:HA3	1:D:500:THR:HB	1.67	0.75
1:A:823:VAL:HB	1:A:828:ARG:HD2	1.67	0.75
1:A:248:THR:HG23	8:A:1893:2AD:H5'1	1.67	0.75
1:A:82:PHE:CD2	1:A:128:CYS:HA	2.22	0.74
1:D:189:LEU:HD23	1:D:190:GLU:H	1.53	0.74

Continued on next page...

Continued from previous page...

Atom-1	Atom-2	Interatomic distance (Å)	Clash overlap (Å)
1:D:450:GLU:H	1:D:450:GLU:CD	1.91	0.74
1:D:687:PHE:CE1	1:D:749:MET:HG2	2.23	0.74
1:A:817:VAL:CG1	1:A:870:LYS:HE2	2.19	0.73
1:A:439:CYS:HB2	1:A:484:CYS:HB2	1.70	0.73
1:D:647:MET:HB3	1:D:650:PRO:HD2	1.69	0.73
1:A:774:TYR:O	1:A:778:MET:HG3	1.89	0.72
1:A:474:GLU:OE2	1:A:495:THR:HG21	1.88	0.72
2:E:7:G:H3'	2:E:8:U:H5'	1.69	0.72
1:D:863:LYS:HE2	1:D:865:ILE:HD11	1.72	0.72
1:A:780:PHE:HB3	1:A:781:PRO:HD3	1.69	0.72
2:E:18:G:N2	2:E:57:A:H2'	2.05	0.71
1:A:765:THR:OG1	1:A:767:VAL:HG12	1.91	0.71
1:A:822:GLN:HB3	1:A:827:VAL:HA	1.71	0.71
8:D:1895:2AD:H5'1	2:E:74:C:H5''	1.72	0.71
1:A:819:VAL:HG22	1:A:870:LYS:HA	1.70	0.71
1:A:457:PRO:HG2	1:A:473:LEU:HD22	1.72	0.71
1:A:852:VAL:HG12	1:A:855:HIS:HB2	1.72	0.70
1:D:700:GLU:HA	1:D:703:LEU:HD12	1.73	0.70
1:D:406:GLU:HG2	1:D:412:LYS:HA	1.72	0.70
1:A:187:ARG:HH11	1:A:187:ARG:HG3	1.55	0.70
1:A:677:THR:O	1:A:681:VAL:HG23	1.92	0.70
1:A:823:VAL:CG2	1:A:828:ARG:HG3	2.21	0.70
1:D:823:VAL:CG2	1:D:828:ARG:HD2	2.22	0.69
2:E:66:C:H2'	2:E:67:C:H6	1.57	0.69
1:D:537:GLY:O	1:D:573:THR:HA	1.93	0.69
1:D:851:ASN:HD22	1:D:853:ARG:CG	2.05	0.69
1:A:817:VAL:HG12	1:A:818:GLU:H	1.58	0.69
1:A:647:MET:HB3	1:A:650:PRO:HD2	1.75	0.68
1:A:189:LEU:HD22	1:A:191:GLN:NE2	2.08	0.68
1:A:609:ALA:O	1:A:610:LEU:HD23	1.92	0.68
1:A:823:VAL:HB	1:A:828:ARG:CD	2.24	0.68
1:D:392:THR:HG22	1:D:393:GLU:H	1.58	0.67
1:A:658:ASP:OD2	1:A:785:HIS:HB2	1.94	0.67
1:D:849:VAL:HG23	1:D:852:VAL:HA	1.75	0.67
1:A:456:LEU:HD23	1:A:457:PRO:HD2	1.77	0.67
1:A:846:ALA:O	1:A:849:VAL:HG13	1.94	0.67
1:A:870:LYS:O	1:A:871:ILE:HD12	1.95	0.67
1:D:709:PHE:CE2	1:D:714:LEU:HD11	2.30	0.67
1:D:860:GLU:HB2	1:D:876:VAL:HG13	1.77	0.67
1:D:338:MET:O	1:D:338:MET:HG3	1.94	0.66
1:D:851:ASN:ND2	1:D:853:ARG:HG3	2.08	0.66

Continued on next page...

Continued from previous page...

Atom-1	Atom-2	Interatomic distance (Å)	Clash overlap (Å)
1:A:240:GLU:CD	1:A:240:GLU:H	1.99	0.66
1:D:823:VAL:HG23	1:D:828:ARG:HD2	1.78	0.66
1:A:450:GLU:H	1:A:450:GLU:CD	1.98	0.66
1:D:55:ASN:ND2	1:D:574:GLN:HG3	2.10	0.66
1:A:249:ARG:HG3	7:A:1892:NVA:HD1	1.78	0.66
1:A:41:PHE:HD1	1:A:41:PHE:O	1.79	0.66
1:A:194:LEU:HD11	1:A:424:ILE:HD13	1.78	0.65
1:D:851:ASN:HB2	1:D:853:ARG:HG3	1.78	0.65
1:A:331:GLY:HA3	1:A:420:ARG:NH2	2.10	0.65
1:D:9:ILE:O	1:D:12:LYS:HB3	1.97	0.65
1:D:861:VAL:HA	1:D:876:VAL:HA	1.79	0.65
1:A:75:HIS:NE2	9:A:2003:HOH:O	2.26	0.65
2:E:66:C:H2'	2:E:67:C:C6	2.32	0.65
1:D:816:VAL:HA	1:D:834:PRO:HA	1.79	0.65
1:A:192:TRP:HB2	1:A:425:SER:HB3	1.79	0.65
1:A:839:LEU:HD12	1:A:839:LEU:N	2.08	0.64
1:A:572:PHE:CD1	1:A:573:THR:N	2.65	0.64
1:A:507:TYR:O	1:A:510:ARG:N	2.30	0.64
1:A:823:VAL:CB	1:A:828:ARG:HG3	2.28	0.64
1:A:466:ARG:HD3	1:A:468:LYS:NZ	2.13	0.64
1:A:162:CYS:HB3	1:A:164:THR:HG22	1.80	0.63
1:D:523:PRO:O	1:D:527:ASN:ND2	2.31	0.63
1:A:649:GLY:O	1:A:653:LYS:HG2	1.99	0.63
1:D:752:LEU:HA	1:D:755:LEU:HD12	1.79	0.63
1:D:105:ILE:O	1:D:109:LYS:HB2	1.99	0.63
1:D:814:LYS:O	1:D:835:LYS:HE3	1.98	0.63
1:D:162:CYS:SG	1:D:179:HIS:HE1	2.21	0.63
1:A:750:GLU:OE1	2:B:23:C:H5'	1.99	0.63
1:D:660:ALA:O	1:D:664:ILE:HG13	1.99	0.63
1:A:82:PHE:HE2	1:A:133:TYR:CD1	2.17	0.63
1:D:195:ARG:HA	1:D:421:ASP:OD1	1.99	0.63
1:A:623:ARG:HD2	1:A:633:TRP:CD1	2.34	0.62
1:D:574:GLN:HE21	1:D:574:GLN:HA	1.65	0.62
1:D:588:VAL:HG22	1:D:593:VAL:HG13	1.81	0.62
1:A:833:ILE:HD13	1:A:837:ALA:HB3	1.81	0.62
1:A:83:GLY:HA3	1:A:500:THR:HB	1.82	0.62
1:A:819:VAL:HG13	1:A:870:LYS:C	2.20	0.62
1:A:745:ILE:HG22	1:A:749:MET:HE3	1.80	0.62
1:A:38:LEU:HD12	1:A:39:VAL:N	2.15	0.62
1:D:263:PRO:HD3	1:D:325:ALA:O	2.01	0.61
2:E:20:U:O2'	2:E:20(A):A:H5'	2.00	0.61

Continued on next page...

Continued from previous page...

Atom-1	Atom-2	Interatomic distance (Å)	Clash overlap (Å)
1:D:833:ILE:HD13	1:D:837:ALA:HB3	1.81	0.61
1:A:29:PRO:HG3	1:A:529:TRP:CZ2	2.34	0.61
1:D:23:MET:CE	1:D:63:ALA:HB1	2.30	0.61
1:D:709:PHE:HE2	1:D:714:LEU:HD11	1.63	0.61
1:A:157:ASN:HB3	1:A:184:VAL:HG11	1.82	0.61
1:A:169:GLU:OE1	1:A:169:GLU:N	2.32	0.61
1:D:759:ARG:HD3	1:D:768:TYR:CE1	2.36	0.61
1:D:456:LEU:HD23	1:D:457:PRO:HD2	1.83	0.60
1:D:394:SER:O	1:D:398:LYS:HG3	2.00	0.60
1:A:41:PHE:CE1	1:A:80:ASP:HB2	2.37	0.60
2:E:47(C):A:H5'	2:E:47(D):G:OP2	2.01	0.60
1:A:668:ALA:HB1	1:A:669:PRO:CD	2.31	0.60
1:D:136:ASN:HD21	1:D:506:TRP:HE1	1.49	0.60
1:D:28:LEU:HD21	1:D:525:LYS:HG2	1.81	0.60
1:D:55:ASN:HD21	1:D:574:GLN:HB2	1.66	0.60
1:A:263:PRO:O	1:A:284:VAL:HG13	2.02	0.60
1:D:668:ALA:HB1	1:D:669:PRO:CD	2.32	0.59
1:D:678:GLU:O	1:D:682:GLN:HG3	2.02	0.59
1:A:255:GLY:O	1:A:257:THR:HG23	2.01	0.59
1:D:780:PHE:HB3	1:D:781:PRO:HD3	1.84	0.59
1:D:277:ARG:NH1	1:D:277:ARG:HB2	2.16	0.59
1:A:484:CYS:SG	1:A:486:LYS:HB3	2.42	0.59
2:E:50:C:H2'	2:E:51:G:H8	1.67	0.59
2:E:65:C:O2'	2:E:66:C:H5'	2.02	0.59
2:E:14:A:H1'	2:E:22:A:C5	2.37	0.59
1:A:43:TYR:CE1	1:A:80:ASP:OD2	2.56	0.59
1:D:694:ARG:HD2	1:D:756:TYR:CE1	2.38	0.59
1:A:707:GLY:N	1:A:769:ARG:HD3	2.17	0.59
1:D:816:VAL:HG22	1:D:834:PRO:HG3	1.84	0.58
1:D:668:ALA:HB1	1:D:669:PRO:HD2	1.85	0.58
1:D:82:PHE:CD2	1:D:128:CYS:HA	2.37	0.58
1:A:764:VAL:O	1:A:764:VAL:HG12	2.03	0.58
1:A:863:LYS:HE2	1:A:865:ILE:HD11	1.85	0.58
1:A:9:ILE:HG21	1:A:789:GLU:HG2	1.85	0.58
1:A:817:VAL:HG11	1:A:870:LYS:HE2	1.84	0.58
2:E:42:U:H2'	2:E:43:G:H8	1.69	0.58
1:D:869:GLY:C	1:D:870:LYS:HD3	2.24	0.58
1:A:466:ARG:HH11	1:A:468:LYS:HZ1	1.52	0.58
2:B:47(D):G:O2'	2:B:47(E):C:H5'	2.03	0.58
1:A:663:THR:HG22	1:A:663:THR:O	2.03	0.58
1:A:816:VAL:H	1:A:834:PRO:HA	1.69	0.58

Continued on next page...

Continued from previous page...

Atom-1	Atom-2	Interatomic distance (Å)	Clash overlap (Å)
1:D:511:TYR:O	1:D:514:PRO:HD3	2.02	0.57
2:E:7:G:H3'	2:E:8:U:C5'	2.33	0.57
1:A:79:TRP:CE2	1:A:105:ILE:HG23	2.39	0.57
1:A:817:VAL:HG12	1:A:870:LYS:HE2	1.87	0.57
1:A:826:ARG:HD3	1:A:828:ARG:HH21	1.69	0.57
1:D:51:GLY:HA2	1:D:577:VAL:HB	1.85	0.57
1:D:823:VAL:HB	1:D:828:ARG:CZ	2.33	0.57
1:A:46:GLY:N	1:A:104:ASN:HD21	2.03	0.57
1:A:651:PHE:CZ	1:A:655:GLN:HG3	2.40	0.57
1:A:826:ARG:HD3	1:A:828:ARG:NH2	2.20	0.57
1:D:327:TYR:CE1	1:D:346:ARG:HD3	2.40	0.57
1:A:426:ARG:HG2	1:A:426:ARG:HH11	1.69	0.57
1:A:93:PHE:O	1:A:95:VAL:HG23	2.04	0.57
1:D:256:ALA:HB2	1:D:338:MET:HE3	1.85	0.56
1:A:437:VAL:HG12	1:A:491:ALA:HB1	1.86	0.56
1:A:195:ARG:HA	1:A:421:ASP:OD1	2.06	0.56
1:D:172:VAL:HG12	1:D:173:GLU:HG3	1.88	0.56
1:A:112:LEU:HD13	1:A:119:TYR:HE2	1.70	0.56
1:A:338:MET:HG3	1:A:338:MET:O	2.05	0.56
1:A:258:PHE:HA	1:A:320:ILE:HB	1.86	0.56
1:D:847:LEU:O	1:D:852:VAL:HG13	2.06	0.56
1:A:187:ARG:NH1	1:A:187:ARG:HG3	2.21	0.56
1:A:541:HIS:HB3	1:A:545:HIS:HB3	1.86	0.56
1:A:823:VAL:HB	1:A:828:ARG:HG3	1.88	0.56
1:D:29:PRO:HD2	1:D:528:ALA:HB1	1.87	0.56
1:D:215:LYS:HE2	1:D:539:VAL:HG11	1.87	0.56
1:A:54:LYS:O	1:A:58:MET:HG3	2.06	0.56
1:D:232:ILE:HG12	1:D:405:LEU:HD13	1.87	0.56
1:A:726:HIS:CD2	1:A:808:ASP:N	2.74	0.55
1:A:726:HIS:HD2	1:A:808:ASP:N	2.02	0.55
1:A:823:VAL:H	1:A:828:ARG:CG	2.19	0.55
1:A:669:PRO:HA	1:A:742:ASN:ND2	2.21	0.55
1:A:707:GLY:CA	1:A:769:ARG:HD3	2.36	0.55
1:A:74:LEU:CD1	1:A:76:PRO:HD3	2.35	0.55
1:D:96:HIS:HB3	1:D:99:ASP:OD2	2.06	0.55
1:D:290:LYS:HE3	1:D:298:GLU:OE2	2.06	0.55
1:A:657:ALA:O	1:A:660:ALA:N	2.39	0.55
1:A:866:TYR:O	1:A:868:PRO:HD3	2.06	0.55
1:A:843:ARG:O	1:A:847:LEU:HG	2.07	0.55
1:A:153:LYS:HG2	1:A:188:GLU:OE2	2.05	0.55
1:A:506:TRP:O	1:A:509:LEU:HB2	2.07	0.55

Continued on next page...

Continued from previous page...

Atom-1	Atom-2	Interatomic distance (Å)	Clash overlap (Å)
1:D:245:VAL:HA	1:D:334:THR:OG1	2.07	0.55
1:A:423:LEU:HD23	1:A:423:LEU:C	2.26	0.55
2:E:53:G:O2'	2:E:54:U:H5'	2.07	0.55
1:D:331:GLY:HA3	1:D:420:ARG:NH2	2.22	0.55
1:D:187:ARG:HH11	1:D:187:ARG:HG3	1.71	0.55
1:D:586:VAL:HG22	1:D:630:LEU:O	2.07	0.55
1:A:493:ARG:HH11	1:A:493:ARG:HG2	1.72	0.55
2:E:61:C:O2'	2:E:62:C:H5'	2.07	0.54
1:D:225:GLY:HA2	2:E:73:A:N3	2.23	0.54
1:A:239:LYS:HD2	1:A:239:LYS:N	2.22	0.54
1:D:852:VAL:HG12	1:D:855:HIS:CB	2.35	0.54
1:A:234:PHE:CE2	1:A:259:LEU:HD21	2.42	0.54
1:A:248:THR:CG2	8:A:1893:2AD:H5'1	2.36	0.54
1:A:54:LYS:HG2	1:A:58:MET:HE3	1.89	0.54
1:A:823:VAL:HB	1:A:828:ARG:CG	2.37	0.54
2:B:42:U:O2'	2:B:43:G:H5'	2.08	0.54
1:D:370:PRO:O	1:D:373:LEU:HD12	2.06	0.54
1:A:694:ARG:HD2	1:A:756:TYR:CE1	2.42	0.54
1:D:870:LYS:HD3	1:D:870:LYS:N	2.21	0.54
1:D:820:ALA:HA	1:D:830:THR:HG22	1.89	0.54
1:D:658:ASP:OD2	1:D:785:HIS:HB2	2.08	0.54
1:D:257:THR:HG1	1:D:258:PHE:HD1	1.56	0.54
1:D:136:ASN:OD1	1:D:503:ASP:HB3	2.08	0.53
1:A:43:TYR:HE1	1:A:80:ASP:OD2	1.90	0.53
2:B:47(A):C:H2'	2:B:47(B):A:O4'	2.08	0.53
1:D:772:ILE:O	1:D:776:LEU:HG	2.08	0.53
2:B:38:A:O2'	2:B:39:U:H5'	2.07	0.53
2:E:65:C:H2'	2:E:66:C:H6	1.74	0.53
1:D:398:LYS:O	1:D:402:ILE:HG13	2.08	0.53
1:D:574:GLN:NE2	1:D:574:GLN:HA	2.22	0.53
1:D:501:PHE:CE2	1:D:544:LEU:HD22	2.43	0.53
1:D:870:LYS:C	1:D:871:ILE:HD12	2.29	0.53
1:A:610:LEU:HD13	1:A:618:MET:CE	2.39	0.53
1:D:55:ASN:HD21	1:D:574:GLN:CB	2.22	0.53
1:D:256:ALA:HB2	1:D:338:MET:CE	2.39	0.53
1:D:84:LEU:HB2	1:D:85:PRO:HD3	1.89	0.53
1:A:396:GLU:HA	1:A:399:ARG:HE	1.73	0.53
1:D:863:LYS:HB3	1:D:875:VAL:HB	1.89	0.53
1:D:380:PRO:HB3	1:D:394:SER:HB2	1.91	0.53
1:D:845:GLU:HA	1:D:848:LYS:HE3	1.90	0.53
2:B:1:G:H2'	2:B:2:C:C6	2.44	0.53

Continued on next page...

Continued from previous page...

Atom-1	Atom-2	Interatomic distance (Å)	Clash overlap (Å)
2:B:18:G:N2	2:B:57:A:H2'	2.24	0.53
1:A:267:LEU:HB3	1:A:271:LEU:HD12	1.90	0.53
1:A:568:PHE:N	1:A:568:PHE:CD1	2.74	0.53
1:A:623:ARG:HD2	1:A:633:TRP:NE1	2.23	0.53
1:D:396:GLU:HG2	1:D:400:LYS:HE3	1.91	0.53
1:A:833:ILE:HD12	1:A:834:PRO:O	2.09	0.53
1:D:841:VAL:O	1:D:845:GLU:HB2	2.08	0.53
1:D:65:PHE:CG	1:D:736:LEU:HD13	2.44	0.53
1:A:745:ILE:CG2	1:A:749:MET:HE3	2.39	0.52
1:D:866:TYR:O	1:D:868:PRO:HD3	2.09	0.52
1:D:863:LYS:HE2	1:D:865:ILE:CD1	2.39	0.52
1:D:136:ASN:ND2	1:D:506:TRP:HE1	2.07	0.52
1:A:694:ARG:HH21	1:A:698:ASP:CG	2.12	0.52
2:B:1:G:H2'	2:B:2:C:H6	1.74	0.52
1:A:64:ARG:HG2	1:A:64:ARG:HH11	1.73	0.52
1:A:852:VAL:HG12	1:A:855:HIS:CB	2.38	0.52
2:E:50:C:H2'	2:E:51:G:C8	2.45	0.52
1:A:15:ARG:HB3	1:A:19:GLU:OE2	2.10	0.52
1:A:696:ALA:HA	1:A:793:TRP:HZ3	1.75	0.52
1:A:793:TRP:HB2	1:A:794:PHE:CE2	2.44	0.52
2:E:18:G:H5'	2:E:18:G:H8	1.74	0.52
1:A:780:PHE:CD1	1:A:784:PRO:HA	2.45	0.52
1:D:43:TYR:O	1:D:45:SER:N	2.43	0.52
1:D:583:PHE:HE2	1:D:634:LYS:HB3	1.75	0.52
1:D:352:ARG:HG3	1:D:352:ARG:HH11	1.75	0.52
1:A:666:PHE:HE1	1:A:746:ALA:HB2	1.75	0.52
1:D:226:ARG:HH11	1:D:226:ARG:HG3	1.75	0.51
1:A:13:TRP:CE3	1:A:788:GLU:HG2	2.45	0.51
1:D:277:ARG:HD2	1:D:281:LEU:CD1	2.40	0.51
1:A:823:VAL:H	1:A:828:ARG:HG2	1.74	0.51
1:A:133:TYR:HB2	1:A:432:THR:HG23	1.91	0.51
2:E:18:G:H21	2:E:57:A:H2'	1.73	0.51
1:D:715:GLU:HA	1:D:719:ARG:HB2	1.91	0.51
1:A:442:CYS:SG	1:A:486:LYS:HD3	2.51	0.51
1:A:137:GLN:NE2	1:A:433:PRO:O	2.37	0.51
1:D:594:ARG:HA	1:D:609:ALA:HA	1.91	0.51
1:D:133:TYR:O	1:D:137:GLN:HG3	2.10	0.51
1:D:162:CYS:HB3	1:D:164:THR:HG22	1.90	0.51
1:A:275:GLU:H	1:A:275:GLU:CD	2.13	0.51
1:D:327:TYR:CD1	1:D:327:TYR:C	2.84	0.51
1:A:745:ILE:O	1:A:748:LEU:N	2.37	0.51

Continued on next page...

Continued from previous page...

Atom-1	Atom-2	Interatomic distance (Å)	Clash overlap (Å)
1:A:341:PRO:HB3	1:A:348:TYR:HA	1.92	0.51
2:B:7:G:H3'	2:B:8:U:H5'	1.91	0.51
1:A:46:GLY:H	1:A:104:ASN:HD21	1.59	0.51
1:A:25:ALA:N	1:A:120:ASP:OD2	2.42	0.51
1:D:706:SER:O	1:D:766:PRO:HB3	2.11	0.51
1:D:50:MET:HE2	1:D:648:VAL:HG22	1.93	0.51
2:B:47(D):G:C2'	2:B:47(E):C:H5'	2.41	0.51
1:D:687:PHE:CD1	1:D:749:MET:HG2	2.46	0.51
1:A:327:TYR:CE1	1:A:346:ARG:HD3	2.46	0.50
1:A:625:HIS:ND1	1:A:627:ASP:OD2	2.44	0.50
1:A:557:HIS:HD2	1:A:562:VAL:O	1.94	0.50
1:D:366:GLY:O	1:D:368:PRO:HD3	2.11	0.50
1:D:369:LEU:HD11	1:D:377:TYR:CD2	2.46	0.50
1:A:267:LEU:HB3	1:A:271:LEU:CD1	2.41	0.50
1:D:133:TYR:HB2	1:D:432:THR:HG23	1.94	0.50
1:A:253:LEU:HA	1:A:338:MET:HE3	1.92	0.50
1:A:638:MET:HA	1:A:644:ASN:OD1	2.11	0.50
1:D:34:LYS:HD2	1:D:34:LYS:O	2.11	0.50
1:D:96:HIS:CD2	1:D:98:LYS:HB3	2.47	0.50
1:D:16:PHE:HA	1:D:19:GLU:OE1	2.11	0.50
1:D:277:ARG:CB	1:D:277:ARG:HH11	2.19	0.50
1:D:647:MET:HB3	1:D:650:PRO:CD	2.40	0.50
1:D:140:PHE:HE2	1:D:424:ILE:HD11	1.76	0.50
1:D:816:VAL:CA	1:D:834:PRO:HA	2.40	0.50
1:A:826:ARG:CD	1:A:828:ARG:HH21	2.24	0.50
1:A:280:VAL:O	1:A:284:VAL:HG23	2.12	0.50
1:A:9:ILE:CG2	1:A:789:GLU:OE1	2.59	0.50
1:A:121:TRP:C	1:A:123:ARG:H	2.14	0.50
1:D:679:GLU:HA	1:D:682:GLN:NE2	2.20	0.50
1:A:9:ILE:HG22	1:A:789:GLU:OE1	2.11	0.50
1:A:55:ASN:N	1:A:55:ASN:HD22	2.10	0.50
1:D:50:MET:CE	1:D:648:VAL:HG22	2.42	0.50
1:D:312:LEU:HD12	1:D:317:GLY:O	2.12	0.50
1:D:312:LEU:HD11	1:D:319:ARG:HG3	1.93	0.50
1:A:34:LYS:C	1:A:34:LYS:HD2	2.32	0.50
1:D:388:PRO:HG2	1:D:389:PHE:CD2	2.47	0.50
1:D:867:VAL:HG12	1:D:867:VAL:O	2.12	0.49
1:A:823:VAL:HG11	1:A:857:GLU:HB3	1.93	0.49
1:D:597:GLU:HB2	1:D:598:PRO:HD3	1.94	0.49
1:D:414:ARG:HH21	1:D:416:THR:CG2	2.25	0.49
1:D:723:GLY:O	1:D:727:GLU:HB2	2.12	0.49

Continued on next page...

Continued from previous page...

Atom-1	Atom-2	Interatomic distance (Å)	Clash overlap (Å)
1:A:312:LEU:HD12	1:A:317:GLY:O	2.11	0.49
2:E:8:U:H1'	2:E:48:U:H1'	1.94	0.49
1:D:588:VAL:HG13	1:D:593:VAL:HG22	1.94	0.49
1:D:671:GLU:HG2	1:D:672:ASN:N	2.28	0.49
1:A:189:LEU:HD22	1:A:191:GLN:HE21	1.75	0.49
1:A:197:THR:HG23	1:A:421:ASP:OD1	2.12	0.49
1:A:477:PRO:HG3	1:A:480:TYR:OH	2.12	0.49
1:D:54:LYS:O	1:D:58:MET:HG3	2.12	0.49
1:A:397:GLY:O	1:A:401:VAL:HG23	2.11	0.49
1:A:668:ALA:HB1	1:A:669:PRO:HD3	1.94	0.49
1:D:659:ILE:HD12	1:D:659:ILE:N	2.27	0.49
1:A:822:GLN:O	1:A:873:ASN:HA	2.13	0.49
1:A:136:ASN:ND2	1:A:506:TRP:HE1	2.10	0.49
1:A:699:ARG:O	1:A:703:LEU:HD12	2.13	0.49
1:D:339:ALA:HA	1:D:347:ASP:OD2	2.12	0.49
1:D:363:GLU:OE2	1:D:368:PRO:HB3	2.13	0.49
1:D:207:LEU:HD21	1:D:550:ARG:NH1	2.28	0.49
1:D:152:ALA:O	1:D:190:GLU:HA	2.13	0.49
1:A:638:MET:HG3	1:A:645:GLY:HA2	1.95	0.49
1:A:101:THR:O	1:A:105:ILE:HG13	2.13	0.49
1:A:253:LEU:HG	1:A:315:ALA:HB2	1.94	0.49
1:D:313:ASN:O	1:D:317:GLY:N	2.41	0.49
1:A:27:ASP:O	1:A:28:LEU:HD23	2.12	0.49
1:A:758:TYR:OH	1:A:765:THR:HG21	2.12	0.48
1:D:49:HIS:HB2	1:D:646:VAL:O	2.13	0.48
1:D:135:TRP:O	1:D:139:ILE:HG13	2.13	0.48
1:A:593:VAL:HG12	1:A:593:VAL:O	2.13	0.48
1:D:38:LEU:HD23	1:D:535:TYR:CE1	2.48	0.48
1:D:442:CYS:SG	1:D:486:LYS:HD3	2.52	0.48
1:A:42:PRO:HD3	1:A:77:MET:HE1	1.95	0.48
2:E:42:U:H2'	2:E:43:G:C8	2.48	0.48
2:B:14:A:H1'	2:B:22:A:C5	2.48	0.48
1:A:507:TYR:O	1:A:509:LEU:N	2.46	0.48
1:D:694:ARG:NH1	1:D:759:ARG:HG3	2.28	0.48
1:A:651:PHE:CE1	1:A:655:GLN:HG3	2.48	0.48
1:A:423:LEU:CD2	1:A:423:LEU:C	2.81	0.48
1:A:678:GLU:HG2	1:A:682:GLN:HE21	1.77	0.48
1:A:194:LEU:HD12	1:A:424:ILE:HG21	1.96	0.48
1:A:480:TYR:HA	1:A:493:ARG:HB2	1.96	0.48
1:A:791:TRP:CD2	1:A:799:LEU:HD21	2.49	0.48
2:B:47(C):A:C8	2:B:47(D):G:H1'	2.48	0.48

Continued on next page...

Continued from previous page...

Atom-1	Atom-2	Interatomic distance (Å)	Clash overlap (Å)
1:D:222:ALA:HA	2:E:73:A:C5	2.48	0.48
1:A:671:GLU:CD	1:A:671:GLU:H	2.17	0.48
1:A:458:ASP:C	1:A:459:LEU:HD12	2.34	0.48
1:D:402:ILE:O	1:D:406:GLU:HG3	2.13	0.48
1:A:785:HIS:O	1:A:787:ALA:N	2.46	0.48
1:D:796:PRO:HG2	1:D:797:ASP:H	1.78	0.48
1:D:465:ILE:HG13	1:D:466:ARG:N	2.28	0.48
1:D:46:GLY:H	1:D:104:ASN:ND2	2.12	0.48
1:A:58:MET:SD	1:A:574:GLN:OE1	2.72	0.48
1:D:206:ASP:OD2	1:D:554:LYS:HE3	2.13	0.48
2:B:53:G:O2'	2:B:54:U:H5'	2.13	0.48
1:D:151:ARG:HG3	1:D:192:TRP:CZ3	2.49	0.48
1:A:620:ALA:HB1	1:A:633:TRP:O	2.14	0.47
1:D:237:GLU:HB2	1:D:312:LEU:HD21	1.95	0.47
1:A:729:LEU:HD23	1:A:807:LEU:HA	1.96	0.47
1:D:687:PHE:HE1	1:D:749:MET:HA	1.79	0.47
1:D:574:GLN:CA	1:D:574:GLN:NE2	2.77	0.47
1:A:194:LEU:CD1	1:A:424:ILE:HG21	2.44	0.47
1:D:730:LYS:O	1:D:734:GLU:HG3	2.14	0.47
1:A:758:TYR:OH	1:A:765:THR:CG2	2.63	0.47
1:D:148:LEU:HD23	1:D:195:ARG:HB3	1.96	0.47
1:D:690:ARG:HH21	1:D:756:TYR:HD2	1.60	0.47
1:A:555:PHE:CE2	1:A:559:LEU:HD11	2.49	0.47
2:B:24:G:O2'	2:B:25:C:H5'	2.14	0.47
1:A:578:LEU:HB2	1:A:675:VAL:HG22	1.96	0.47
1:A:316:THR:OG1	1:A:318:GLU:HG2	2.15	0.47
1:A:851:ASN:H	1:A:851:ASN:ND2	2.12	0.47
1:A:571:LEU:HG	1:A:571:LEU:O	2.14	0.47
1:A:851:ASN:CG	1:A:853:ARG:HB2	2.35	0.47
1:A:420:ARG:NH1	1:A:420:ARG:HG2	2.28	0.47
2:B:7:G:H3'	2:B:8:U:C5'	2.45	0.47
1:A:861:VAL:HA	1:A:876:VAL:HA	1.96	0.47
2:B:19:G:OP1	2:B:60:U:N3	2.47	0.47
1:A:428:ARG:NH1	1:A:467:PRO:HG3	2.30	0.47
2:E:60:U:C5'	2:E:61:C:H5	2.27	0.47
1:D:583:PHE:CE2	1:D:634:LYS:HB3	2.49	0.47
1:D:226:ARG:HG3	1:D:417:TYR:HE1	1.79	0.47
2:B:20:U:H5'	2:B:20:U:H6	1.79	0.47
1:D:406:GLU:HA	1:D:411:GLY:O	2.15	0.47
1:D:17:TRP:CH2	1:D:784:PRO:HB2	2.50	0.47
1:D:361:VAL:HG23	1:D:362:ILE:HG12	1.97	0.47

Continued on next page...

Continued from previous page...

Atom-1	Atom-2	Interatomic distance (Å)	Clash overlap (Å)
1:A:171:VAL:HG13	1:A:184:VAL:HG21	1.96	0.47
1:A:16:PHE:CE1	1:A:20:LYS:HG3	2.50	0.47
1:A:466:ARG:HD3	1:A:468:LYS:HZ2	1.79	0.46
1:A:663:THR:O	1:A:663:THR:CG2	2.62	0.46
1:A:210:LEU:HG	1:A:212:TRP:CD1	2.50	0.46
1:D:518:ARG:O	1:D:519:LEU:HG	2.14	0.46
2:B:60:U:H5''	2:B:61:C:H5	1.80	0.46
1:D:822:GLN:HB3	1:D:827:VAL:HA	1.96	0.46
1:A:121:TRP:C	1:A:123:ARG:N	2.68	0.46
1:D:312:LEU:HD13	1:D:319:ARG:HA	1.96	0.46
1:A:373:LEU:HD12	1:A:373:LEU:N	2.30	0.46
1:D:866:TYR:HD1	1:D:872:LEU:HD13	1.80	0.46
1:D:819:VAL:HG22	1:D:870:LYS:HA	1.96	0.46
2:E:18:G:C8	2:E:18:G:H5'	2.50	0.46
1:A:183:PRO:CB	1:A:293:ILE:HD12	2.39	0.46
2:E:2:C:H2'	2:E:3:C:H6	1.81	0.46
1:A:29:PRO:CG	1:A:529:TRP:CZ2	2.99	0.46
1:D:508:TYR:CD1	1:D:509:LEU:HG	2.51	0.46
1:D:55:ASN:ND2	1:D:574:GLN:CG	2.79	0.46
1:A:161:LYS:HD3	1:A:179:HIS:CD2	2.50	0.46
1:D:157:ASN:HB3	1:D:184:VAL:HG11	1.98	0.46
2:E:38:A:O2'	2:E:39:U:H5'	2.16	0.46
1:A:513:ASP:OD2	1:A:525:LYS:HD2	2.16	0.46
1:A:748:LEU:HD21	1:A:778:MET:CE	2.45	0.46
1:A:240:GLU:CD	1:A:240:GLU:N	2.68	0.46
1:D:826:ARG:HG3	1:D:826:ARG:HH11	1.79	0.46
1:A:313:ASN:O	1:A:315:ALA:N	2.48	0.46
1:A:60:ASP:OD1	1:A:661:ARG:NH2	2.40	0.46
1:D:851:ASN:HB2	1:D:853:ARG:CG	2.45	0.45
2:E:67:C:O2'	2:E:68:C:H5'	2.15	0.45
1:D:38:LEU:CD1	1:D:76:PRO:HG2	2.46	0.45
1:D:41:PHE:CE1	3:D:1893:LEU:HG	2.50	0.45
1:D:823:VAL:C	1:D:825:GLY:H	2.20	0.45
1:D:189:LEU:CD2	1:D:190:GLU:H	2.24	0.45
1:A:623:ARG:HD2	1:A:633:TRP:CE2	2.51	0.45
1:D:480:TYR:HB2	1:D:492:LYS:HG3	1.97	0.45
1:D:824:ASN:ND2	1:D:876:VAL:HB	2.22	0.45
1:A:853:ARG:O	1:A:857:GLU:HB2	2.17	0.45
1:A:159:CYS:HB3	1:A:162:CYS:HB2	1.97	0.45
1:D:183:PRO:HG3	1:D:293:ILE:HD12	1.97	0.45
1:D:196:ILE:HG13	1:D:551:PHE:CG	2.52	0.45

Continued on next page...

Continued from previous page...

Atom-1	Atom-2	Interatomic distance (Å)	Clash overlap (Å)
1:D:96:HIS:ND1	1:D:97:PRO:HD2	2.32	0.45
2:E:71:G:O2'	2:E:72:C:H5'	2.16	0.45
1:A:738:ALA:HB1	1:A:740:ARG:HH12	1.82	0.45
2:B:65:C:H2'	2:B:66:C:H6	1.81	0.45
1:A:95:VAL:HG12	1:A:96:HIS:N	2.32	0.45
1:D:38:LEU:HD13	1:D:76:PRO:HG2	1.98	0.45
2:B:60:U:C5'	2:B:61:C:H5	2.30	0.45
1:A:163:GLN:NE2	1:A:469:GLY:HA2	2.32	0.45
1:D:144:TRP:HA	1:D:149:ALA:HB3	1.98	0.45
1:D:816:VAL:HA	1:D:833:ILE:O	2.17	0.45
1:D:79:TRP:CE2	1:D:105:ILE:HG23	2.52	0.45
1:A:366:GLY:O	1:A:368:PRO:HD3	2.17	0.45
1:D:867:VAL:O	1:D:869:GLY:N	2.50	0.45
1:A:780:PHE:HB3	1:A:781:PRO:CD	2.44	0.45
1:A:849:VAL:HG23	1:A:852:VAL:H	1.81	0.45
1:A:507:TYR:O	1:A:508:TYR:C	2.54	0.45
1:D:457:PRO:O	1:D:459:LEU:HD13	2.17	0.45
1:A:859:LYS:HB2	1:A:860:GLU:OE2	2.16	0.45
1:D:819:VAL:HG13	1:D:870:LYS:C	2.37	0.45
1:A:826:ARG:O	1:A:828:ARG:HG2	2.16	0.45
1:D:176:CYS:HB3	1:D:179:HIS:HB2	1.98	0.45
1:D:181:ASP:O	1:D:183:PRO:HD3	2.17	0.44
1:A:74:LEU:HD12	1:A:76:PRO:HD3	1.98	0.44
1:A:689:ASN:O	1:A:692:TYR:N	2.50	0.44
1:A:249:ARG:HG3	1:A:249:ARG:HH11	1.82	0.44
1:D:690:ARG:NH2	1:D:756:TYR:HD2	2.16	0.44
2:E:2:C:O2'	2:E:3:C:H5'	2.17	0.44
2:B:65:C:H2'	2:B:66:C:C6	2.53	0.44
1:A:426:ARG:NH1	1:A:426:ARG:HG2	2.32	0.44
2:B:3:C:H2'	2:B:4:G:H8	1.82	0.44
1:A:232:ILE:HG12	1:A:405:LEU:HD13	1.99	0.44
1:A:157:ASN:HB3	1:A:184:VAL:CG1	2.47	0.44
1:A:555:PHE:CZ	1:A:559:LEU:HD11	2.53	0.44
1:D:57:THR:O	1:D:60:ASP:N	2.51	0.44
1:A:193:TYR:HA	1:A:422:TRP:O	2.16	0.44
1:D:836:ASP:O	1:D:837:ALA:C	2.56	0.44
1:D:152:ALA:O	1:D:190:GLU:HG3	2.17	0.44
1:A:104:ASN:O	1:A:105:ILE:C	2.56	0.44
1:A:575:GLY:O	1:A:576:MET:O	2.36	0.44
1:A:84:LEU:HD22	1:A:162:CYS:SG	2.58	0.44
1:D:25:ALA:HB2	1:D:74:LEU:HA	1.99	0.44

Continued on next page...

Continued from previous page...

Atom-1	Atom-2	Interatomic distance (Å)	Clash overlap (Å)
1:D:191:GLN:HB3	1:D:425:SER:OG	2.18	0.44
1:A:133:TYR:CD2	1:A:133:TYR:C	2.90	0.44
1:A:507:TYR:CD2	1:A:508:TYR:N	2.85	0.43
1:D:323:TRP:HB3	1:D:324:THR:H	1.71	0.43
1:D:31:GLY:C	1:D:33:GLY:H	2.21	0.43
1:D:833:ILE:HG13	1:D:833:ILE:H	1.71	0.43
1:D:846:ALA:O	1:D:849:VAL:HG13	2.17	0.43
1:A:748:LEU:HD21	1:A:778:MET:HE2	1.99	0.43
1:A:759:ARG:NH2	1:A:764:VAL:HG23	2.34	0.43
1:A:179:HIS:C	1:A:181:ASP:H	2.22	0.43
1:A:345:GLN:HG3	1:A:349:GLU:OE2	2.18	0.43
1:D:600:ARG:NH1	1:D:600:ARG:HG2	2.33	0.43
1:D:664:ILE:HG12	1:D:676:TRP:HZ3	1.83	0.43
1:D:445:VAL:HG11	1:D:486:LYS:HB2	2.00	0.43
1:D:822:GLN:HG3	1:D:873:ASN:OD1	2.19	0.43
1:D:83:GLY:CA	1:D:500:THR:HB	2.44	0.43
1:A:817:VAL:HG12	1:A:818:GLU:N	2.29	0.43
1:A:647:MET:H	1:A:647:MET:HE1	1.82	0.43
1:D:429:TYR:CE1	1:D:456:LEU:HD22	2.54	0.43
1:D:762:ARG:HA	1:D:763:PRO:HD3	1.83	0.43
1:A:851:ASN:N	1:A:851:ASN:HD22	2.16	0.43
1:D:43:TYR:CE1	1:D:80:ASP:OD2	2.71	0.43
1:D:183:PRO:HB3	1:D:293:ILE:HD12	1.99	0.43
1:D:541:HIS:HB3	1:D:545:HIS:HB3	2.01	0.43
1:D:819:VAL:HG21	1:D:833:ILE:HD11	2.00	0.43
1:D:44:PRO:HD2	1:D:80:ASP:O	2.18	0.43
1:D:810:LYS:HA	1:D:813:GLU:OE1	2.17	0.43
1:D:651:PHE:CE1	1:D:676:TRP:HZ2	2.36	0.43
1:A:79:TRP:CD2	1:A:105:ILE:HG23	2.54	0.43
1:A:234:PHE:CD2	1:A:259:LEU:HD21	2.54	0.43
1:D:658:ASP:O	1:D:662:ILE:HG12	2.19	0.43
1:D:845:GLU:HA	1:D:848:LYS:CE	2.48	0.43
1:D:541:HIS:O	1:D:542:ALA:C	2.57	0.43
2:B:28:A:P	9:B:2002:HOH:O	2.75	0.43
1:D:234:PHE:HA	1:D:235:PRO:HD3	1.87	0.43
1:A:133:TYR:O	1:A:134:ARG:C	2.57	0.43
1:D:136:ASN:HA	1:D:136:ASN:HD22	1.63	0.43
1:D:29:PRO:HG3	1:D:529:TRP:CZ2	2.53	0.43
1:A:120:ASP:C	1:A:120:ASP:OD1	2.56	0.43
1:D:32:ARG:HG2	1:D:70:GLY:O	2.17	0.43
1:A:127:THR:HA	1:A:132:TYR:CD1	2.53	0.43

Continued on next page...

Continued from previous page...

Atom-1	Atom-2	Interatomic distance (Å)	Clash overlap (Å)
1:A:9:ILE:O	1:A:12:LYS:HB3	2.19	0.43
1:D:838:PRO:HD2	1:D:841:VAL:CG2	2.49	0.43
1:D:15:ARG:O	1:D:19:GLU:HG3	2.19	0.43
1:A:402:ILE:HG22	1:A:403:ALA:N	2.33	0.43
1:A:133:TYR:HB2	1:A:432:THR:CG2	2.49	0.43
1:A:767:VAL:HG13	1:A:768:TYR:N	2.34	0.43
2:B:50:C:O4'	2:E:47(C):A:C2	2.71	0.43
1:A:799:LEU:HD23	1:A:799:LEU:HA	1.80	0.43
1:A:738:ALA:HB1	1:A:740:ARG:NH1	2.33	0.43
1:D:360:LYS:HB3	1:D:360:LYS:HE2	1.90	0.43
1:A:225:GLY:HA2	2:B:73:A:N3	2.34	0.43
1:D:393:GLU:O	1:D:394:SER:C	2.57	0.42
1:A:75:HIS:O	1:A:119:TYR:HD1	2.02	0.42
2:B:45:G:H2'	2:B:46:C:H6	1.84	0.42
1:D:277:ARG:HD2	1:D:281:LEU:HD11	2.01	0.42
1:A:823:VAL:N	1:A:828:ARG:HG3	2.34	0.42
1:A:745:ILE:O	1:A:748:LEU:HB2	2.19	0.42
1:A:741:PHE:O	1:A:742:ASN:C	2.55	0.42
1:D:671:GLU:HG2	1:D:672:ASN:H	1.83	0.42
2:B:47(B):A:C6	2:B:47(C):A:N1	2.87	0.42
2:B:47:G:N2	2:B:47(C):A:OP2	2.48	0.42
1:A:507:TYR:C	1:A:509:LEU:N	2.71	0.42
1:A:742:ASN:OD1	1:A:742:ASN:N	2.49	0.42
1:A:373:LEU:H	1:A:373:LEU:HD12	1.83	0.42
1:D:788:GLU:OE2	1:D:799:LEU:HB2	2.18	0.42
1:A:207:LEU:O	1:A:217:LYS:HE2	2.19	0.42
1:A:140:PHE:CD1	1:A:140:PHE:C	2.93	0.42
1:D:131:GLU:CD	1:D:131:GLU:H	2.23	0.42
1:A:762:ARG:HA	1:A:763:PRO:HD3	1.87	0.42
1:A:849:VAL:HG23	1:A:852:VAL:N	2.34	0.42
1:A:135:TRP:O	1:A:136:ASN:C	2.58	0.42
1:A:507:TYR:CG	1:A:508:TYR:N	2.87	0.42
1:A:158:TRP:HZ2	1:A:163:GLN:NE2	2.17	0.42
1:A:160:PRO:O	1:A:163:GLN:HG2	2.20	0.42
2:B:28:A:H8	9:B:2002:HOH:O	2.01	0.42
1:A:621:GLU:O	1:A:622:LEU:HD23	2.20	0.42
1:D:707:GLY:N	1:D:769:ARG:HD3	2.35	0.42
1:A:79:TRP:NE1	1:A:124:GLU:OE2	2.42	0.42
1:A:239:LYS:N	1:A:239:LYS:CD	2.82	0.42
1:D:859:LYS:C	1:D:860:GLU:OE2	2.58	0.42
1:D:457:PRO:HG2	1:D:473:LEU:HD22	2.01	0.42

Continued on next page...

Continued from previous page...

Atom-1	Atom-2	Interatomic distance (Å)	Clash overlap (Å)
1:D:465:ILE:O	1:D:472:PRO:HG2	2.19	0.42
1:A:613:GLU:O	1:A:617:LYS:HG3	2.20	0.42
1:D:120:ASP:OD1	1:D:122:ASP:HB2	2.18	0.42
1:D:160:PRO:HG2	1:D:182:THR:CG2	2.49	0.42
1:D:461:ASP:OD1	1:D:464:ASP:HB2	2.20	0.42
1:D:500:THR:C	1:D:502:PHE:H	2.23	0.42
1:A:758:TYR:CZ	1:A:762:ARG:HG2	2.54	0.42
1:A:675:VAL:HG12	1:A:677:THR:HG23	2.01	0.42
1:D:226:ARG:NH1	1:D:226:ARG:HG3	2.33	0.42
1:D:64:ARG:O	1:D:68:MET:HG3	2.19	0.42
1:A:35:GLN:HG3	1:A:66:ARG:HD2	2.01	0.42
1:A:620:ALA:HB2	1:A:634:LYS:HB2	2.01	0.42
1:A:55:ASN:ND2	1:A:574:GLN:HG3	2.35	0.42
1:D:226:ARG:HA	1:D:417:TYR:HD1	1.84	0.42
1:D:727:GLU:HA	1:D:812:LEU:HD22	2.02	0.42
2:E:30:G:H1	2:E:40:C:H42	1.66	0.42
1:D:233:LEU:CD2	1:D:244:PRO:HB3	2.49	0.42
1:A:791:TRP:CE3	1:A:799:LEU:HD21	2.54	0.42
1:D:146:LYS:O	1:D:146:LYS:HG2	2.19	0.42
1:A:819:VAL:HG12	1:A:820:ALA:N	2.35	0.42
1:A:477:PRO:HG3	1:A:480:TYR:CZ	2.55	0.41
1:D:225:GLY:HA2	2:E:73:A:C2	2.55	0.41
1:D:133:TYR:HB2	1:D:432:THR:CG2	2.49	0.41
1:D:234:PHE:CE2	1:D:314:PRO:HD2	2.55	0.41
1:D:223:TRP:HB2	1:D:543:VAL:HG11	2.02	0.41
1:A:384:VAL:HG22	1:A:385:ASN:N	2.35	0.41
1:A:231:GLU:HA	1:A:245:VAL:O	2.20	0.41
1:A:401:VAL:O	1:A:404:TRP:HB3	2.20	0.41
1:D:41:PHE:N	1:D:41:PHE:CD1	2.88	0.41
1:A:249:ARG:CG	7:A:1892:NVA:HD1	2.48	0.41
1:D:151:ARG:HG3	1:D:192:TRP:CE3	2.55	0.41
1:A:343:HIS:CE1	1:A:362:ILE:HB	2.56	0.41
1:A:23:MET:HE1	1:A:63:ALA:HB1	2.02	0.41
1:D:836:ASP:N	1:D:836:ASP:OD2	2.53	0.41
1:D:687:PHE:CE1	1:D:749:MET:HA	2.55	0.41
1:A:192:TRP:CH2	1:A:436:MET:HG3	2.55	0.41
1:A:466:ARG:NH1	1:A:468:LYS:HE3	2.35	0.41
1:A:493:ARG:NH1	1:A:493:ARG:HG2	2.34	0.41
1:D:312:LEU:CD1	1:D:319:ARG:HG3	2.49	0.41
1:D:480:TYR:O	1:D:492:LYS:HA	2.19	0.41
1:D:487:CYS:SG	1:D:488:GLY:N	2.93	0.41

Continued on next page...

Continued from previous page...

Atom-1	Atom-2	Interatomic distance (Å)	Clash overlap (Å)
1:A:762:ARG:HG3	1:A:763:PRO:HD2	2.01	0.41
1:A:657:ALA:O	1:A:658:ASP:C	2.58	0.41
1:D:388:PRO:HG2	1:D:389:PHE:H	1.84	0.41
1:D:685:TRP:O	1:D:689:ASN:HB2	2.21	0.41
1:D:614:ASP:O	1:D:618:MET:HG2	2.20	0.41
1:D:265:HIS:ND1	1:D:266:PRO:HD2	2.35	0.41
1:D:823:VAL:HB	1:D:828:ARG:NH1	2.36	0.41
2:E:14:A:H1'	2:E:22:A:C8	2.54	0.41
1:A:436:MET:HE3	1:A:444:VAL:HG12	2.02	0.41
1:A:567:PRO:HB2	1:A:568:PHE:CE1	2.56	0.41
1:A:678:GLU:HG2	1:A:682:GLN:NE2	2.36	0.41
1:A:621:GLU:C	1:A:622:LEU:HD23	2.41	0.41
1:D:584:GLY:O	1:D:631:HIS:HA	2.20	0.41
2:B:55:U:H2'	2:B:57:A:OP2	2.19	0.41
1:A:461:ASP:OD1	1:A:464:ASP:HB2	2.21	0.41
1:D:230:ALA:HA	1:D:413:GLY:HA2	2.03	0.41
1:D:49:HIS:O	1:D:50:MET:C	2.59	0.41
1:D:58:MET:CE	1:D:670:PRO:HB3	2.51	0.41
1:D:305:VAL:O	1:D:324:THR:HG22	2.20	0.41
1:D:786:LEU:O	1:D:789:GLU:HB3	2.21	0.41
1:A:151:ARG:HH11	1:A:151:ARG:HG2	1.86	0.41
2:B:47(C):A:N3	2:E:66:C:H1'	2.35	0.41
1:A:610:LEU:HD13	1:A:618:MET:HE1	2.03	0.41
1:A:41:PHE:CE1	1:A:80:ASP:CB	3.03	0.41
1:D:765:THR:O	1:D:768:TYR:HB3	2.20	0.41
1:A:253:LEU:O	1:A:253:LEU:HD12	2.21	0.41
1:D:58:MET:HE1	1:D:670:PRO:HB3	2.02	0.41
1:A:536:ILE:HD12	1:A:536:ILE:N	2.35	0.41
1:A:378:GLU:O	1:A:379:GLU:O	2.39	0.41
1:A:739:LEU:N	1:A:739:LEU:HD12	2.36	0.41
1:A:87:GLU:HG2	1:A:91:LEU:HD22	2.03	0.41
1:D:767:VAL:HG13	1:D:768:TYR:N	2.34	0.41
1:D:126:THR:O	1:D:128:CYS:N	2.54	0.41
2:E:58:A:C2	2:E:60:U:H2'	2.56	0.41
1:A:448:PRO:HD2	1:A:451:GLU:OE1	2.21	0.41
1:D:177:TRP:HD1	1:D:177:TRP:H	1.66	0.41
1:D:816:VAL:H	1:D:834:PRO:HA	1.86	0.40
2:E:66:C:C2	2:E:67:C:C5	3.09	0.40
1:A:133:TYR:HD2	1:A:133:TYR:C	2.24	0.40
1:D:392:THR:HG22	1:D:393:GLU:N	2.30	0.40
1:D:708:VAL:O	1:D:709:PHE:HB3	2.21	0.40

Continued on next page...

Continued from previous page...

Atom-1	Atom-2	Interatomic distance (Å)	Clash overlap (Å)
1:D:144:TRP:CE3	1:D:436:MET:HE2	2.56	0.40
1:A:708:VAL:O	1:A:709:PHE:HB3	2.21	0.40
1:D:591:SER:O	1:D:611:SER:HA	2.21	0.40
1:D:155:LEU:HD12	1:D:264:GLU:HG2	2.02	0.40
1:A:342:ALA:O	1:A:343:HIS:ND1	2.55	0.40
1:D:611:SER:O	1:D:615:VAL:HG23	2.21	0.40
1:A:115:MET:CE	1:A:648:VAL:HG13	2.51	0.40
1:A:224:ILE:HA	1:A:419:LEU:HB2	2.02	0.40
1:A:247:THR:HA	8:A:1893:2AD:H3'	2.03	0.40
2:E:60:U:H5'	2:E:61:C:H5	1.85	0.40
1:A:625:HIS:HB3	1:A:627:ASP:OD2	2.21	0.40
1:D:600:ARG:HH11	1:D:600:ARG:HG2	1.86	0.40
1:A:65:PHE:CG	1:A:736:LEU:HD13	2.56	0.40
1:A:314:PRO:HB2	1:A:410:LEU:HD22	2.02	0.40
1:D:6:PRO:O	1:D:7:HIS:C	2.60	0.40
1:A:826:ARG:HB2	1:A:828:ARG:HH21	1.87	0.40
2:B:18:G:H21	2:B:57:A:H2'	1.87	0.40
1:A:64:ARG:HG2	1:A:64:ARG:NH1	2.36	0.40
1:D:437:VAL:HG23	1:D:447:VAL:HG22	2.04	0.40
1:D:816:VAL:N	1:D:834:PRO:HA	2.36	0.40
1:A:130:PRO:HA	1:A:133:TYR:CE2	2.56	0.40
1:A:82:PHE:HE2	1:A:133:TYR:HD1	1.66	0.40
1:A:457:PRO:O	1:A:459:LEU:HD13	2.22	0.40
1:A:740:ARG:HG3	1:A:740:ARG:HH11	1.86	0.40
2:B:27:C:O2'	2:B:28:A:H5'	2.21	0.40
1:A:603:LEU:HD23	1:A:603:LEU:HA	1.87	0.40

There are no symmetry-related clashes.

5.3 Torsion angles [i](#)

5.3.1 Protein backbone [i](#)

In the following table, the Percentiles column shows the percent Ramachandran outliers of the chain as a percentile score with respect to all X-ray entries followed by that with respect to entries of similar resolution.

The Analysed column shows the number of residues for which the backbone conformation was analysed, and the total number of residues.

Mol	Chain	Analysed	Favoured	Allowed	Outliers	Percentiles	
1	A	874/878 (100%)	728 (83%)	120 (14%)	26 (3%)	5	22
1	D	874/878 (100%)	735 (84%)	113 (13%)	26 (3%)	5	22
All	All	1748/1756 (100%)	1463 (84%)	233 (13%)	52 (3%)	5	22

All (52) Ramachandran outliers are listed below:

Mol	Chain	Res	Type
1	A	576	MET
1	A	796	PRO
1	D	208	GLU
1	D	542	ALA
1	D	861	VAL
1	A	430	TRP
1	A	763	PRO
1	A	786	LEU
1	A	861	VAL
1	D	53	LEU
1	D	127	THR
1	D	225	GLY
1	D	390	ASP
1	D	392	THR
1	D	501	PHE
1	D	850	ARG
1	A	398	LYS
1	A	789	GLU
1	A	797	ASP
1	D	6	PRO
1	D	596	PRO
1	D	868	PRO
1	A	10	GLU
1	A	208	GLU
1	A	333	GLY
1	A	847	LEU
1	D	7	HIS
1	D	30	GLY
1	D	32	ARG
1	D	44	PRO
1	A	277	ARG
1	A	508	TYR
1	D	792	HIS
1	D	796	PRO
1	D	824	ASN

Continued on next page...

Continued from previous page...

Mol	Chain	Res	Type
1	A	6	PRO
1	A	689	ASN
1	A	869	GLY
1	D	469	GLY
1	D	543	VAL
1	D	875	VAL
1	A	379	GLU
1	A	33	GLY
1	A	314	PRO
1	A	435	PRO
1	A	564	VAL
1	D	763	PRO
1	D	805	PRO
1	A	44	PRO
1	A	816	VAL
1	A	849	VAL
1	D	816	VAL

5.3.2 Protein sidechains ⓘ

In the following table, the Percentiles column shows the percent sidechain outliers of the chain as a percentile score with respect to all X-ray entries followed by that with respect to entries of similar resolution.

The Analysed column shows the number of residues for which the sidechain conformation was analysed, and the total number of residues.

Mol	Chain	Analysed	Rotameric	Outliers	Percentiles	
1	A	741/742 (100%)	706 (95%)	35 (5%)	32	68
1	D	741/742 (100%)	717 (97%)	24 (3%)	46	81
All	All	1482/1484 (100%)	1423 (96%)	59 (4%)	38	74

All (59) residues with a non-rotameric sidechain are listed below:

Mol	Chain	Res	Type
1	A	10	GLU
1	A	34	LYS
1	A	36	TYR
1	A	39	VAL
1	A	41	PHE
1	A	47	ASP

Continued on next page...

Continued from previous page...

Mol	Chain	Res	Type
1	A	49	HIS
1	A	55	ASN
1	A	62	LEU
1	A	76	PRO
1	A	82	PHE
1	A	91	LEU
1	A	113	ARG
1	A	130	PRO
1	A	133	TYR
1	A	189	LEU
1	A	240	GLU
1	A	278	GLU
1	A	289	ARG
1	A	292	GLU
1	A	327	TYR
1	A	352	ARG
1	A	456	LEU
1	A	500	THR
1	A	503	ASP
1	A	568	PHE
1	A	647	MET
1	A	664	ILE
1	A	765	THR
1	A	794	PHE
1	A	828	ARG
1	A	839	LEU
1	A	851	ASN
1	A	857	GLU
1	A	871	ILE
1	D	34	LYS
1	D	36	TYR
1	D	41	PHE
1	D	82	PHE
1	D	189	LEU
1	D	197	THR
1	D	214	GLU
1	D	247	THR
1	D	264	GLU
1	D	277	ARG
1	D	327	TYR
1	D	379	GLU
1	D	392	THR

Continued on next page...

Continued from previous page...

Mol	Chain	Res	Type
1	D	456	LEU
1	D	503	ASP
1	D	647	MET
1	D	700	GLU
1	D	718	ASP
1	D	736	LEU
1	D	836	ASP
1	D	849	VAL
1	D	851	ASN
1	D	868	PRO
1	D	870	LYS

Some sidechains can be flipped to improve hydrogen bonding and reduce clashes. All (22) such sidechains are listed below:

Mol	Chain	Res	Type
1	A	55	ASN
1	A	104	ASN
1	A	107	GLN
1	A	163	GLN
1	A	179	HIS
1	A	557	HIS
1	A	574	GLN
1	A	682	GLN
1	A	726	HIS
1	A	822	GLN
1	A	851	ASN
1	D	5	ASN
1	D	55	ASN
1	D	104	ASN
1	D	136	ASN
1	D	163	GLN
1	D	515	HIS
1	D	655	GLN
1	D	682	GLN
1	D	726	HIS
1	D	824	ASN
1	D	851	ASN

5.3.3 RNA ⓘ

Mol	Chain	Analysed	Backbone Outliers	Pucker Outliers
2	B	76/83 (91%)	10 (13%)	2 (2%)
2	E	76/83 (91%)	8 (10%)	2 (2%)
All	All	152/166 (91%)	18 (11%)	4 (2%)

All (18) RNA backbone outliers are listed below:

Mol	Chain	Res	Type
2	B	7	G
2	B	8	U
2	B	10	G
2	B	18	G
2	B	19	G
2	B	20	U
2	B	47(C)	A
2	B	47(D)	G
2	B	48	U
2	B	73	A
2	E	10	G
2	E	18	G
2	E	19	G
2	E	20	U
2	E	47(C)	A
2	E	47(D)	G
2	E	48	U
2	E	73	A

All (4) RNA pucker outliers are listed below:

Mol	Chain	Res	Type
2	B	9	G
2	B	18	G
2	E	9	G
2	E	18	G

5.4 Non-standard residues in protein, DNA, RNA chains ⓘ

There are no non-standard protein/DNA/RNA residues in this entry.

5.5 Carbohydrates ⓘ

There are no carbohydrates in this entry.

5.6 Ligand geometry

Of 37 ligands modelled in this entry, 6 are monoatomic - leaving 31 for Mogul analysis.

In the following table, the Counts columns list the number of bonds (or angles) for which Mogul statistics could be retrieved, the number of bonds (or angles) that are observed in the model and the number of bonds (or angles) that are defined in the chemical component dictionary. The Link column lists molecule types, if any, to which the group is linked. The Z score for a bond length (or angle) is the number of standard deviations the observed value is removed from the expected value. A bond length (or angle) with $|Z| > 2$ is considered an outlier worth inspection. RMSZ is the root-mean-square of all Z scores of the bond lengths (or angles).

Mol	Type	Chain	Res	Link	Bond lengths			Bond angles		
					Counts	RMSZ	$\# Z > 2$	Counts	RMSZ	$\# Z > 2$
6	SO4	A	1880	-	4,4,4	0.25	0	6,6,6	0.12	0
6	SO4	A	1881	-	4,4,4	0.21	0	6,6,6	0.16	0
6	SO4	A	1882	-	4,4,4	0.19	0	6,6,6	0.19	0
6	SO4	A	1883	-	4,4,4	0.24	0	6,6,6	0.15	0
6	SO4	A	1884	-	4,4,4	0.24	0	6,6,6	0.10	0
6	SO4	A	1885	-	4,4,4	0.25	0	6,6,6	0.06	0
6	SO4	A	1886	-	4,4,4	0.20	0	6,6,6	0.11	0
6	SO4	A	1887	-	4,4,4	0.23	0	6,6,6	0.09	0
6	SO4	A	1888	-	4,4,4	0.23	0	6,6,6	0.09	0
6	SO4	A	1889	-	4,4,4	0.22	0	6,6,6	0.12	0
6	SO4	A	1890	-	4,4,4	0.23	0	6,6,6	0.12	0
6	SO4	A	1891	-	4,4,4	0.22	0	6,6,6	0.12	0
7	NVA	A	1892	8	5,6,7	0.50	0	4,6,8	0.88	0
8	2AD	A	1893	7	17,21,21	0.63	0	14,31,31	0.66	0
3	LEU	A	1894	-	5,8,8	0.17	0	5,10,10	0.72	0
6	SO4	D	1880	-	4,4,4	0.22	0	6,6,6	0.09	0
6	SO4	D	1881	-	4,4,4	0.22	0	6,6,6	0.11	0
6	SO4	D	1882	-	4,4,4	0.24	0	6,6,6	0.08	0
6	SO4	D	1883	-	4,4,4	0.21	0	6,6,6	0.10	0
6	SO4	D	1884	-	4,4,4	0.22	0	6,6,6	0.06	0
6	SO4	D	1885	-	4,4,4	0.22	0	6,6,6	0.09	0
6	SO4	D	1886	-	4,4,4	0.22	0	6,6,6	0.11	0
6	SO4	D	1887	-	4,4,4	0.23	0	6,6,6	0.10	0
6	SO4	D	1888	-	4,4,4	0.20	0	6,6,6	0.07	0
6	SO4	D	1889	-	4,4,4	0.22	0	6,6,6	0.08	0
6	SO4	D	1890	-	4,4,4	0.24	0	6,6,6	0.12	0
6	SO4	D	1891	-	4,4,4	0.21	0	6,6,6	0.07	0
6	SO4	D	1892	-	4,4,4	0.25	0	6,6,6	0.09	0
3	LEU	D	1893	-	5,8,8	0.16	0	5,10,10	0.28	0
7	NVA	D	1894	8	5,6,7	0.44	0	4,6,8	0.87	0
8	2AD	D	1895	7	17,21,21	0.61	0	14,31,31	0.73	0

In the following table, the Chirals column lists the number of chiral outliers, the number of chiral centers analysed, the number of these observed in the model and the number defined in the chemical component dictionary. Similar counts are reported in the Torsion and Rings columns. '-' means no outliers of that kind were identified.

Mol	Type	Chain	Res	Link	Chirals	Torsions	Rings
6	SO4	A	1880	-	-	0/0/0/0	0/0/0/0
6	SO4	A	1881	-	-	0/0/0/0	0/0/0/0
6	SO4	A	1882	-	-	0/0/0/0	0/0/0/0
6	SO4	A	1883	-	-	0/0/0/0	0/0/0/0
6	SO4	A	1884	-	-	0/0/0/0	0/0/0/0
6	SO4	A	1885	-	-	0/0/0/0	0/0/0/0
6	SO4	A	1886	-	-	0/0/0/0	0/0/0/0
6	SO4	A	1887	-	-	0/0/0/0	0/0/0/0
6	SO4	A	1888	-	-	0/0/0/0	0/0/0/0
6	SO4	A	1889	-	-	0/0/0/0	0/0/0/0
6	SO4	A	1890	-	-	0/0/0/0	0/0/0/0
6	SO4	A	1891	-	-	0/0/0/0	0/0/0/0
7	NVA	A	1892	8	-	0/3/5/7	0/0/0/0
8	2AD	A	1893	7	-	0/2/22/22	0/3/3/3
3	LEU	A	1894	-	-	0/4/8/8	0/0/0/0
6	SO4	D	1880	-	-	0/0/0/0	0/0/0/0
6	SO4	D	1881	-	-	0/0/0/0	0/0/0/0
6	SO4	D	1882	-	-	0/0/0/0	0/0/0/0
6	SO4	D	1883	-	-	0/0/0/0	0/0/0/0
6	SO4	D	1884	-	-	0/0/0/0	0/0/0/0
6	SO4	D	1885	-	-	0/0/0/0	0/0/0/0
6	SO4	D	1886	-	-	0/0/0/0	0/0/0/0
6	SO4	D	1887	-	-	0/0/0/0	0/0/0/0
6	SO4	D	1888	-	-	0/0/0/0	0/0/0/0
6	SO4	D	1889	-	-	0/0/0/0	0/0/0/0
6	SO4	D	1890	-	-	0/0/0/0	0/0/0/0
6	SO4	D	1891	-	-	0/0/0/0	0/0/0/0
6	SO4	D	1892	-	-	0/0/0/0	0/0/0/0
3	LEU	D	1893	-	-	0/4/8/8	0/0/0/0
7	NVA	D	1894	8	-	0/3/5/7	0/0/0/0
8	2AD	D	1895	7	-	0/2/22/22	0/3/3/3

There are no bond length outliers.

There are no bond angle outliers.

There are no chirality outliers.

There are no torsion outliers.

There are no ring outliers.

4 monomers are involved in 7 short contacts:

Mol	Chain	Res	Type	Clashes	Symm-Clashes
7	A	1892	NVA	2	0
8	A	1893	2AD	3	0
3	D	1893	LEU	1	0
8	D	1895	2AD	1	0

5.7 Other polymers [i](#)

There are no such residues in this entry.

5.8 Polymer linkage issues [i](#)

There are no chain breaks in this entry.

6 Fit of model and data

6.1 Protein, DNA and RNA chains

In the following table, the column labelled ‘#RSRZ> 2’ contains the number (and percentage) of RSRZ outliers, followed by percent RSRZ outliers for the chain as percentile scores relative to all X-ray entries and entries of similar resolution. The OWAB column contains the minimum, median, 95th percentile and maximum values of the occupancy-weighted average B-factor per residue. The column labelled ‘Q< 0.9’ lists the number of (and percentage) of residues with an average occupancy less than 0.9.

Mol	Chain	Analysed	<RSRZ>	#RSRZ>2	OWAB(Å ²)	Q<0.9
1	A	876/878 (99%)	0.10	32 (3%) 45 38	25, 67, 104, 136	0
1	D	876/878 (99%)	0.43	75 (8%) 13 8	57, 93, 139, 161	0
2	B	78/83 (93%)	0.31	5 (6%) 23 16	35, 70, 150, 186	0
2	E	78/83 (93%)	0.34	5 (6%) 23 16	50, 79, 157, 189	0
All	All	1908/1922 (99%)	0.27	117 (6%) 25 18	25, 79, 130, 189	0

All (117) RSRZ outliers are listed below:

Mol	Chain	Res	Type	RSRZ
1	D	1	MET	6.9
2	B	17	G	6.5
2	E	17	G	6.3
1	A	858	GLY	5.9
1	D	591	SER	5.2
1	D	855	HIS	5.0
1	D	432	THR	5.0
1	D	858	GLY	4.9
2	B	32	C	4.7
1	D	497	THR	4.7
1	D	431	GLY	4.6
1	D	487	CYS	4.4
1	D	583	PHE	4.3
1	D	584	GLY	4.2
1	D	498	MET	4.2
1	D	627	ASP	4.2
1	D	433	PRO	3.9
1	D	629	THR	3.9
1	A	855	HIS	3.9
1	D	642	LYS	3.8
2	E	32	C	3.8

Continued on next page...

Continued from previous page...

Mol	Chain	Res	Type	RSRZ
1	D	505	SER	3.7
1	D	32	ARG	3.6
1	D	300	ARG	3.6
1	D	797	ASP	3.6
1	A	497	THR	3.5
2	B	31	A	3.5
1	D	590	GLY	3.5
1	D	589	GLU	3.5
1	D	496	ASP	3.4
1	D	605	ILE	3.4
1	D	180	GLU	3.4
1	D	856	LEU	3.4
1	D	630	LEU	3.3
1	D	606	PRO	3.3
1	A	1	MET	3.2
1	D	851	ASN	3.2
1	A	490	PRO	3.2
1	D	876	VAL	3.2
1	D	2	GLU	3.2
2	E	31	A	3.2
1	A	440	GLU	3.1
1	D	850	ARG	3.1
1	D	488	GLY	3.1
1	D	862	VAL	3.1
1	A	432	THR	2.9
1	A	338	MET	2.9
1	A	431	GLY	2.9
1	D	860	GLU	2.9
1	A	433	PRO	2.9
1	D	173	GLU	2.9
1	A	31	GLY	2.9
1	A	850	ARG	2.9
1	D	504	SER	2.8
1	A	860	GLU	2.8
1	D	296	GLN	2.8
1	D	617	LYS	2.8
1	A	876	VAL	2.7
1	A	498	MET	2.7
1	D	592	VAL	2.7
1	A	862	VAL	2.6
1	A	781	PRO	2.6
1	A	505	SER	2.6

Continued on next page...

Continued from previous page...

Mol	Chain	Res	Type	RSRZ
1	D	654	GLU	2.5
1	D	781	PRO	2.5
1	D	607	GLU	2.5
1	D	623	ARG	2.5
1	D	60	ASP	2.5
1	D	83	GLY	2.4
2	E	76	A	2.4
1	D	490	PRO	2.4
1	D	830	THR	2.4
1	D	299	GLY	2.4
1	D	31	GLY	2.4
1	D	93	PHE	2.4
1	D	643	GLY	2.3
1	D	461	ASP	2.3
1	D	434	ILE	2.3
1	A	296	GLN	2.3
1	D	601	ILE	2.3
1	D	495	THR	2.3
1	A	188	GLU	2.2
1	D	19	GLU	2.2
1	A	499	ASP	2.2
1	D	613	GLU	2.2
1	D	779	LEU	2.2
2	E	38	A	2.2
1	A	32	ARG	2.2
1	D	56	TYR	2.2
1	A	859	LYS	2.2
1	D	859	LYS	2.2
1	D	468	LYS	2.2
1	D	463	GLU	2.2
1	D	293	ILE	2.1
1	D	278	GLU	2.1
1	D	796	PRO	2.1
1	D	188	GLU	2.1
1	D	440	GLU	2.1
1	D	782	PHE	2.1
2	B	38	A	2.1
1	A	298	GLU	2.1
1	A	875	VAL	2.1
1	D	638	MET	2.1
1	D	628	GLY	2.1
1	A	293	ILE	2.1

Continued on next page...

Continued from previous page...

Mol	Chain	Res	Type	RSRZ
1	D	499	ASP	2.1
1	D	772	ILE	2.1
1	D	761	ASP	2.0
1	D	465	ILE	2.0
1	A	856	LEU	2.0
2	B	30	G	2.0
1	A	504	SER	2.0
1	A	93	PHE	2.0
1	A	299	GLY	2.0
1	A	779	LEU	2.0
1	D	297	ALA	2.0
1	A	481	GLU	2.0

6.2 Non-standard residues in protein, DNA, RNA chains [i](#)

There are no non-standard protein/DNA/RNA residues in this entry.

6.3 Carbohydrates [i](#)

There are no carbohydrates in this entry.

6.4 Ligands [i](#)

In the following table, the Atoms column lists the number of modelled atoms in the group and the number defined in the chemical component dictionary. LLDF column lists the quality of electron density of the group with respect to its neighbouring residues in protein, DNA or RNA chains. The B-factors column lists the minimum, median, 95th percentile and maximum values of B factors of atoms in the group. The column labelled 'Q < 0.9' lists the number of atoms with occupancy less than 0.9.

Mol	Type	Chain	Res	Atoms	RSCC	RSR	LLDF	B-factors(Å ²)	Q<0.9
6	SO4	A	1890	5/5	0.82	0.35	3.50	148,150,150,151	0
6	SO4	A	1891	5/5	0.83	0.27	1.02	143,144,145,145	0
3	LEU	D	1893	9/9	0.93	0.27	0.41	91,94,95,95	0
7	NVA	A	1892	7/8	0.92	0.28	0.28	75,77,81,84	0
6	SO4	D	1889	5/5	0.92	0.21	0.23	136,137,138,139	0
8	2AD	A	1893	19/19	0.96	0.21	0.13	50,58,75,76	0
8	2AD	D	1895	19/19	0.97	0.20	-0.03	59,66,71,71	0
4	ZN	A	1878	1/1	0.97	0.17	-0.16	68,68,68,68	0
6	SO4	D	1882	5/5	0.83	0.21	-0.29	153,154,155,155	0

Continued on next page...

Continued from previous page...

Mol	Type	Chain	Res	Atoms	RSCC	RSR	LLDF	B-factors(\AA^2)	Q<0.9
7	NVA	D	1894	7/8	0.95	0.23	-0.31	58,61,66,67	0
4	ZN	D	1878	1/1	0.97	0.15	-0.75	97,97,97,97	0
6	SO4	A	1889	5/5	0.94	0.13	-0.95	117,117,119,120	0
5	HG	D	1879	1/1	0.99	0.14	-1.00	156,156,156,156	0
6	SO4	D	1881	5/5	0.96	0.10	-1.45	101,101,103,104	0
5	HG	A	1879	1/1	0.99	0.14	-1.61	109,109,109,109	0
6	SO4	A	1881	5/5	0.98	0.11	-1.65	69,75,76,76	0
3	LEU	A	1894	9/9	0.97	0.16	-1.71	41,50,58,60	0
4	ZN	D	1877	1/1	0.95	0.11	-1.73	142,142,142,142	0
4	ZN	A	1877	1/1	0.81	0.06	-2.01	117,117,117,117	0
6	SO4	A	1882	5/5	0.96	0.09	-2.60	86,89,92,93	0
6	SO4	A	1886	5/5	0.89	0.26	-	144,144,145,146	0
6	SO4	D	1892	5/5	0.91	0.20	-	135,136,138,138	0
6	SO4	D	1880	5/5	0.92	0.28	-	152,152,153,153	0
6	SO4	A	1885	5/5	0.94	0.12	-	122,122,123,123	0
6	SO4	D	1888	5/5	0.95	0.14	-	153,154,154,154	0
6	SO4	A	1880	5/5	0.87	0.29	-	148,148,149,149	0
6	SO4	A	1884	5/5	0.95	0.13	-	95,96,98,98	0
6	SO4	A	1883	5/5	0.93	0.11	-	132,133,134,134	0
6	SO4	D	1884	5/5	0.97	0.08	-	119,119,121,121	0
6	SO4	A	1888	5/5	0.92	0.24	-	146,147,147,148	0
6	SO4	D	1886	5/5	0.87	0.21	-	133,135,136,136	0
6	SO4	D	1883	5/5	0.89	0.19	-	140,140,141,142	0
6	SO4	D	1890	5/5	0.88	0.40	-	153,153,154,155	0
6	SO4	A	1887	5/5	0.96	0.13	-	113,114,115,116	0
6	SO4	D	1885	5/5	0.79	0.24	-	143,145,146,146	0
6	SO4	D	1887	5/5	0.96	0.12	-	103,104,105,106	0
6	SO4	D	1891	5/5	0.95	0.10	-	112,113,115,115	0

6.5 Other polymers [i](#)

There are no such residues in this entry.