



wwPDB X-ray Structure Validation Summary Report ⓘ

Feb 19, 2016 – 09:51 PM GMT

PDB ID : 5BU2
Title : Structure of the C-terminal domain of lpg1496 from Legionella pneumophila in complex with nucleotide
Authors : Wong, K.; Kozlov, G.; Gehring, K.; Montreal-Kingston Bacterial Structural Genomics Initiative (BSGI)
Deposited on : 2015-06-03
Resolution : 2.11 Å(reported)

This is a wwPDB X-ray Structure Validation Summary Report for a publicly released PDB entry.
We welcome your comments at validation@mail.wwpdb.org
A user guide is available at
<http://wwpdb.org/validation/2016/XrayValidationReportHelp>
with specific help available everywhere you see the ⓘ symbol.

The following versions of software and data (see [references ⓘ](#)) were used in the production of this report:

MolProbity : 4.02b-467
Mogul : 1.7.1 (RC1), CSD as537be (2016)
Xtriage (Phenix) : 1.9-1692
EDS : rb-20026982
Percentile statistics : 20151230.v01 (using entries in the PDB archive December 30th 2015)
Refmac : 5.8.0135
CCP4 : 6.5.0
Ideal geometry (proteins) : Engh & Huber (2001)
Ideal geometry (DNA, RNA) : Parkinson et al. (1996)
Validation Pipeline (wwPDB-VP) : rb-20026982

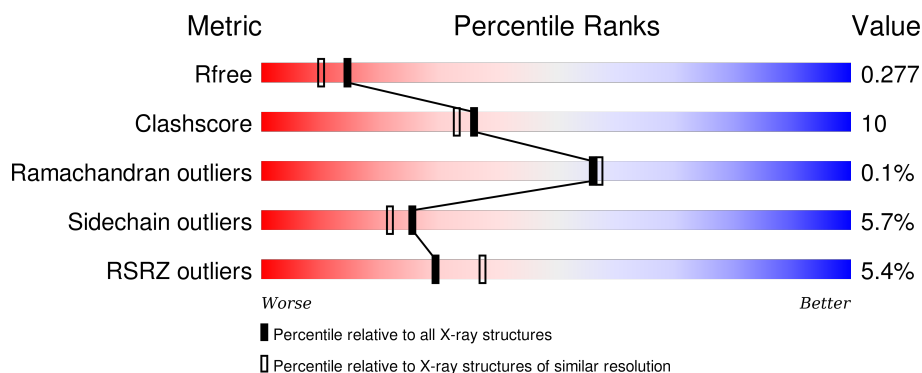
1 Overall quality at a glance

The following experimental techniques were used to determine the structure:

X-RAY DIFFRACTION

The reported resolution of this entry is 2.11 Å.

Percentile scores (ranging between 0-100) for global validation metrics of the entry are shown in the following graphic. The table shows the number of entries on which the scores are based.



Metric	Whole archive (#Entries)	Similar resolution (#Entries, resolution range(Å))
R_{free}	91344	4587 (2.14-2.10)
Clashscore	102246	5132 (2.14-2.10)
Ramachandran outliers	100387	5080 (2.14-2.10)
Sidechain outliers	100360	5081 (2.14-2.10)
RSRZ outliers	91569	4597 (2.14-2.10)

The table below summarises the geometric issues observed across the polymeric chains and their fit to the electron density. The red, orange, yellow and green segments on the lower bar indicate the fraction of residues that contain outliers for ≥ 3 , 2, 1 and 0 types of geometric quality criteria. A grey segment represents the fraction of residues that are not modelled. The numeric value for each fraction is indicated below the corresponding segment, with a dot representing fractions $\leq 5\%$. The upper red bar (where present) indicates the fraction of residues that have poor fit to the electron density. The numeric value is given above the bar.

Mol	Chain	Length	Quality of chain
1	A	454	<div> <div>4%</div> <div>49% 13% • 37%</div> </div>
1	B	454	<div> <div>2%</div> <div>51% 12% • 36%</div> </div>
1	C	454	<div> <div>2%</div> <div>52% 11% • 36%</div> </div>
1	D	454	<div> <div>6%</div> <div>50% 13% • 36%</div> </div>

The following table lists non-polymeric compounds, carbohydrate monomers and non-standard

residues in protein, DNA, RNA chains that are outliers for geometric or electron-density-fit criteria:

Mol	Type	Chain	Res	Chirality	Geometry	Clashes	Electron density
2	ADP	A	701	-	-	X	-
2	ADP	A	702	-	-	X	X
2	ADP	B	702	-	-	X	X
2	ADP	C	701	-	-	-	X
4	RIB	D	701	-	-	-	X

2 Entry composition

There are 5 unique types of molecules in this entry. The entry contains 9504 atoms, of which 0 are hydrogens and 0 are deuteriums.

In the tables below, the ZeroOcc column contains the number of atoms modelled with zero occupancy, the AltConf column contains the number of residues with at least one atom in alternate conformation and the Trace column contains the number of residues modelled with at most 2 atoms.

- Molecule 1 is a protein called lpg1496.

Mol	Chain	Residues	Atoms					ZeroOcc	AltConf	Trace
1	A	288	Total	C	N	O	S	0	0	0
			2295	1461	390	432	12			
1	B	290	Total	C	N	O	S	0	1	0
			2313	1473	392	436	12			
1	C	290	Total	C	N	O	S	0	3	0
			2325	1480	392	441	12			
1	D	289	Total	C	N	O	S	0	1	0
			2309	1471	391	435	12			

There are 36 discrepancies between the modelled and reference sequences:

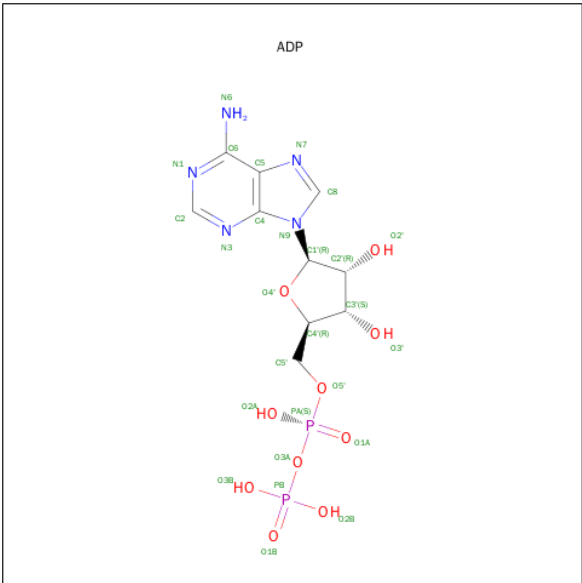
Chain	Residue	Modelled	Actual	Comment	Reference
A	153	MET	-	initiating methionine	UNP G8UY02
A	599	LEU	-	expression tag	UNP G8UY02
A	600	GLU	-	expression tag	UNP G8UY02
A	601	HIS	-	expression tag	UNP G8UY02
A	602	HIS	-	expression tag	UNP G8UY02
A	603	HIS	-	expression tag	UNP G8UY02
A	604	HIS	-	expression tag	UNP G8UY02
A	605	HIS	-	expression tag	UNP G8UY02
A	606	HIS	-	expression tag	UNP G8UY02
B	153	MET	-	initiating methionine	UNP G8UY02
B	599	LEU	-	expression tag	UNP G8UY02
B	600	GLU	-	expression tag	UNP G8UY02
B	601	HIS	-	expression tag	UNP G8UY02
B	602	HIS	-	expression tag	UNP G8UY02
B	603	HIS	-	expression tag	UNP G8UY02
B	604	HIS	-	expression tag	UNP G8UY02
B	605	HIS	-	expression tag	UNP G8UY02
B	606	HIS	-	expression tag	UNP G8UY02
C	153	MET	-	initiating methionine	UNP G8UY02
C	599	LEU	-	expression tag	UNP G8UY02
C	600	GLU	-	expression tag	UNP G8UY02

Continued on next page...

Continued from previous page...

Chain	Residue	Modelled	Actual	Comment	Reference
C	601	HIS	-	expression tag	UNP G8UY02
C	602	HIS	-	expression tag	UNP G8UY02
C	603	HIS	-	expression tag	UNP G8UY02
C	604	HIS	-	expression tag	UNP G8UY02
C	605	HIS	-	expression tag	UNP G8UY02
C	606	HIS	-	expression tag	UNP G8UY02
D	153	MET	-	initiating methionine	UNP G8UY02
D	599	LEU	-	expression tag	UNP G8UY02
D	600	GLU	-	expression tag	UNP G8UY02
D	601	HIS	-	expression tag	UNP G8UY02
D	602	HIS	-	expression tag	UNP G8UY02
D	603	HIS	-	expression tag	UNP G8UY02
D	604	HIS	-	expression tag	UNP G8UY02
D	605	HIS	-	expression tag	UNP G8UY02
D	606	HIS	-	expression tag	UNP G8UY02

- Molecule 2 is ADENOSINE-5'-DIPHOSPHATE (three-letter code: ADP) (formula: C₁₀H₁₅N₅O₁₀P₂).



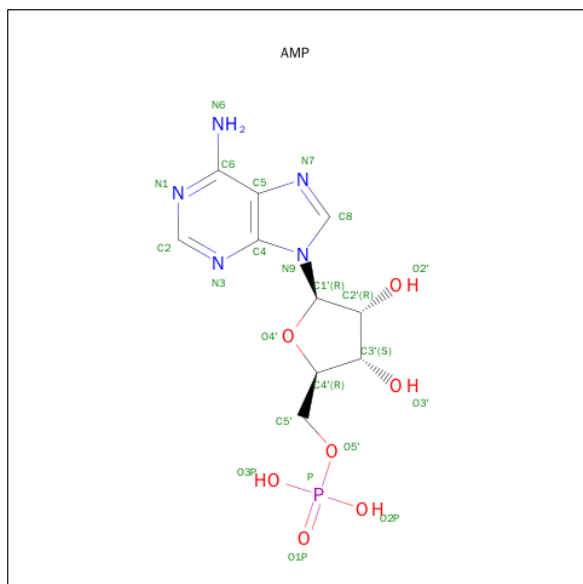
Mol	Chain	Residues	Atoms					ZeroOcc	AltConf
2	A	1	Total	C	N	O	P	0	0
			27	10	5	10	2		
2	A	1	Total	C	N	O	P	0	0
			27	10	5	10	2		
2	B	1	Total	C	N	O	P	0	0
			27	10	5	10	2		

Continued on next page...

Continued from previous page...

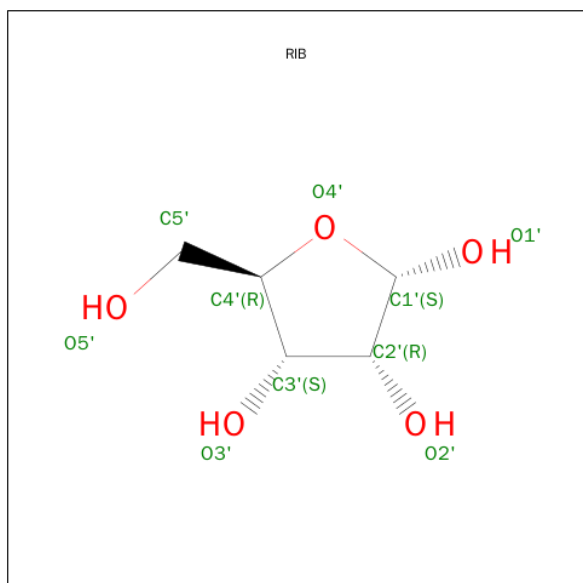
Mol	Chain	Residues	Atoms					ZeroOcc	AltConf
2	C	1	Total	C	N	O	P	0	0
			27	10	5	10	2		

- Molecule 3 is ADENOSINE MONOPHOSPHATE (three-letter code: AMP) (formula: $C_{10}H_{14}N_5O_7P$).



Mol	Chain	Residues	Atoms					ZeroOcc	AltConf
3	B	1	Total	C	N	O	P	0	0
			23	10	5	7	1		

- Molecule 4 is RIBOSE (three-letter code: RIB) (formula: $C_5H_{10}O_5$).



Mol	Chain	Residues	Atoms			ZeroOcc	AltConf
4	D	1	Total	C	O	0	0
			10	5	5		

- Molecule 5 is water.

Mol	Chain	Residues	Atoms		ZeroOcc	AltConf
5	A	34	Total	O	0	0
			34	34		
5	B	28	Total	O	0	0
			28	28		
5	C	29	Total	O	0	0
			29	29		
5	D	30	Total	O	0	0
			30	30		

- Molecule 1: lpg1496



4 Data and refinement statistics

Property	Value	Source
Space group	P 1	Depositor
Cell constants a, b, c, α , β , γ	56.87Å 69.71Å 77.03Å 89.87° 72.30° 70.31°	Depositor
Resolution (Å)	34.00 – 2.11 33.29 – 2.11	Depositor EDS
% Data completeness (in resolution range)	94.3 (34.00-2.11) 91.5 (33.29-2.11)	Depositor EDS
R_{merge}	(Not available)	Depositor
R_{sym}	0.10	Depositor
$\langle I/\sigma(I) \rangle$ ¹	2.39 (at 2.12Å)	Xtriage
Refinement program	REFMAC 5.8.0049	Depositor
R, R_{free}	0.229 , 0.273 0.232 , 0.277	Depositor DCC
R_{free} test set	2884 reflections (5.32%)	DCC
Wilson B-factor (Å ²)	33.5	Xtriage
Anisotropy	0.025	Xtriage
Bulk solvent k_{sol} (e/Å ³), B_{sol} (Å ²)	0.39 , 38.6	EDS
Estimated twinning fraction	No twinning to report.	Xtriage
L-test for twinning ²	$\langle L \rangle = 0.49$, $\langle L^2 \rangle = 0.32$	Xtriage
Outliers	0 of 57093 reflections	Xtriage
F_o, F_c correlation	0.93	EDS
Total number of atoms	9504	wwPDB-VP
Average B, all atoms (Å ²)	37.0	wwPDB-VP

Xtriage's analysis on translational NCS is as follows: *The largest off-origin peak in the Patterson function is 6.04% of the height of the origin peak. No significant pseudotranslation is detected.*

¹Intensities estimated from amplitudes.

²Theoretical values of $\langle |L| \rangle$, $\langle L^2 \rangle$ for acentric reflections are 0.5, 0.375 respectively for untwinned datasets, and 0.333, 0.2 for perfectly twinned datasets.

5 Model quality [i](#)

5.1 Standard geometry [i](#)

Bond lengths and bond angles in the following residue types are not validated in this section: AMP, RIB, ADP

The Z score for a bond length (or angle) is the number of standard deviations the observed value is removed from the expected value. A bond length (or angle) with $|Z| > 5$ is considered an outlier worth inspection. RMSZ is the root-mean-square of all Z scores of the bond lengths (or angles).

Mol	Chain	Bond lengths		Bond angles	
		RMSZ	$\# Z > 5$	RMSZ	$\# Z > 5$
1	A	0.40	0/2354	0.56	0/3185
1	B	0.39	0/2375	0.58	0/3214
1	C	0.38	0/2393	0.58	2/3239 (0.1%)
1	D	0.39	0/2371	0.55	0/3208
All	All	0.39	0/9493	0.57	2/12846 (0.0%)

There are no bond length outliers.

All (2) bond angle outliers are listed below:

Mol	Chain	Res	Type	Atoms	Z	Observed(°)	Ideal(°)
1	C	416	ARG	NE-CZ-NH2	-5.22	117.69	120.30
1	C	363	ARG	NE-CZ-NH2	-5.17	117.71	120.30

There are no chirality outliers.

There are no planarity outliers.

5.2 Too-close contacts [i](#)

In the following table, the Non-H and H(model) columns list the number of non-hydrogen atoms and hydrogen atoms in the chain respectively. The H(added) column lists the number of hydrogen atoms added and optimized by MolProbity. The Clashes column lists the number of clashes within the asymmetric unit, whereas Symm-Clashes lists symmetry related clashes.

Mol	Chain	Non-H	H(model)	H(added)	Clashes	Symm-Clashes
1	A	2295	0	2222	65	1
1	B	2313	0	2245	48	0
1	C	2325	0	2252	37	0
1	D	2309	0	2239	29	1
2	A	54	0	24	25	0

Continued on next page...

Continued from previous page...

Mol	Chain	Non-H	H(model)	H(added)	Clashes	Symm-Clashes
2	B	27	0	12	13	0
2	C	27	0	12	4	0
3	B	23	0	12	1	0
4	D	10	0	10	2	0
5	A	34	0	0	2	0
5	B	28	0	0	2	1
5	C	29	0	0	1	0
5	D	30	0	0	0	1
All	All	9504	0	9028	177	2

The all-atom clashscore is defined as the number of clashes found per 1000 atoms (including hydrogen atoms). The all-atom clashscore for this structure is 10.

The worst 5 of 177 close contacts within the same asymmetric unit are listed below, sorted by their clash magnitude.

Atom-1	Atom-2	Interatomic distance (Å)	Clash overlap (Å)
1:B:549:ALA:HB2	1:B:585:ILE:HD11	1.36	1.05
1:A:393:LYS:HD2	2:A:701:ADP:N6	1.74	1.03
1:A:504:HIS:NE2	2:A:702:ADP:H2'	1.74	1.02
1:A:393:LYS:HD2	2:A:701:ADP:C6	1.95	1.01
1:B:413:VAL:HG12	2:B:702:ADP:H4'	1.39	1.01

All (2) symmetry-related close contacts are listed below. The label for Atom-2 includes the symmetry operator and encoded unit-cell translations to be applied.

Atom-1	Atom-2	Interatomic distance (Å)	Clash overlap (Å)
5:B:826:HOH:O	5:D:829:HOH:O[1_565]	1.50	0.70
1:A:393:LYS:NZ	1:D:476:SER:OG[1_556]	2.10	0.10

5.3 Torsion angles [i](#)

5.3.1 Protein backbone [i](#)

In the following table, the Percentiles column shows the percent Ramachandran outliers of the chain as a percentile score with respect to all X-ray entries followed by that with respect to entries of similar resolution.

The Analysed column shows the number of residues for which the backbone conformation was analysed, and the total number of residues.

Mol	Chain	Analysed	Favoured	Allowed	Outliers	Percentiles	
1	A	284/454 (63%)	277 (98%)	7 (2%)	0	100	100
1	B	287/454 (63%)	281 (98%)	6 (2%)	0	100	100
1	C	289/454 (64%)	283 (98%)	6 (2%)	0	100	100
1	D	286/454 (63%)	278 (97%)	7 (2%)	1 (0%)	46	44
All	All	1146/1816 (63%)	1119 (98%)	26 (2%)	1 (0%)	56	57

All (1) Ramachandran outliers are listed below:

Mol	Chain	Res	Type
1	D	397	LEU

5.3.2 Protein sidechains ⓘ

In the following table, the Percentiles column shows the percent sidechain outliers of the chain as a percentile score with respect to all X-ray entries followed by that with respect to entries of similar resolution.

The Analysed column shows the number of residues for which the sidechain conformation was analysed, and the total number of residues.

Mol	Chain	Analysed	Rotameric	Outliers	Percentiles	
1	A	245/394 (62%)	233 (95%)	12 (5%)	31	27
1	B	248/394 (63%)	236 (95%)	12 (5%)	31	28
1	C	250/394 (64%)	237 (95%)	13 (5%)	29	25
1	D	247/394 (63%)	228 (92%)	19 (8%)	16	11
All	All	990/1576 (63%)	934 (94%)	56 (6%)	25	22

5 of 56 residues with a non-rotameric sidechain are listed below:

Mol	Chain	Res	Type
1	C	397	LEU
1	C	523	LYS
1	D	528	ARG
1	C	399	GLN
1	C	440	TYR

Some sidechains can be flipped to improve hydrogen bonding and reduce clashes. 5 of 12 such sidechains are listed below:

Mol	Chain	Res	Type
1	B	583	GLN
1	C	315	ASN
1	C	544	HIS
1	B	344	HIS
1	C	504	HIS

5.3.3 RNA [i](#)

There are no RNA molecules in this entry.

5.4 Non-standard residues in protein, DNA, RNA chains [i](#)

There are no non-standard protein/DNA/RNA residues in this entry.

5.5 Carbohydrates [i](#)

There are no carbohydrates in this entry.

5.6 Ligand geometry [i](#)

6 ligands are modelled in this entry.

In the following table, the Counts columns list the number of bonds (or angles) for which Mogul statistics could be retrieved, the number of bonds (or angles) that are observed in the model and the number of bonds (or angles) that are defined in the chemical component dictionary. The Link column lists molecule types, if any, to which the group is linked. The Z score for a bond length (or angle) is the number of standard deviations the observed value is removed from the expected value. A bond length (or angle) with $|Z| > 2$ is considered an outlier worth inspection. RMSZ is the root-mean-square of all Z scores of the bond lengths (or angles).

Mol	Type	Chain	Res	Link	Bond lengths			Bond angles		
					Counts	RMSZ	$\# Z > 2$	Counts	RMSZ	$\# Z > 2$
2	ADP	A	701	-	24,29,29	1.05	2 (8%)	23,45,45	2.07	6 (26%)
2	ADP	A	702	-	24,29,29	1.07	1 (4%)	23,45,45	1.78	3 (13%)
3	AMP	B	701	-	22,25,25	1.05	1 (4%)	22,38,38	2.26	4 (18%)
2	ADP	B	702	-	24,29,29	1.18	2 (8%)	23,45,45	2.29	6 (26%)
2	ADP	C	701	-	24,29,29	1.20	2 (8%)	23,45,45	2.92	8 (34%)
4	RIB	D	701	-	10,10,10	1.04	1 (10%)	13,14,14	1.85	5 (38%)

In the following table, the Chirals column lists the number of chiral outliers, the number of chiral

centers analysed, the number of these observed in the model and the number defined in the chemical component dictionary. Similar counts are reported in the Torsion and Rings columns. '-' means no outliers of that kind were identified.

Mol	Type	Chain	Res	Link	Chirals	Torsions	Rings
2	ADP	A	701	-	-	0/12/32/32	0/3/3/3
2	ADP	A	702	-	-	0/12/32/32	0/3/3/3
3	AMP	B	701	-	-	0/6/26/26	0/3/3/3
2	ADP	B	702	-	-	0/12/32/32	0/3/3/3
2	ADP	C	701	-	-	0/12/32/32	0/3/3/3
4	RIB	D	701	-	-	0/2/18/18	0/1/1/1

The worst 5 of 9 bond length outliers are listed below:

Mol	Chain	Res	Type	Atoms	Z	Observed(Å)	Ideal(Å)
4	D	701	RIB	C1'-C2'	-2.56	1.49	1.52
2	B	702	ADP	C2-N3	2.08	1.35	1.32
2	A	701	ADP	O4'-C1'	2.28	1.44	1.41
2	C	701	ADP	C2-N3	2.29	1.36	1.32
2	A	701	ADP	C5-C4	2.80	1.46	1.40

The worst 5 of 32 bond angle outliers are listed below:

Mol	Chain	Res	Type	Atoms	Z	Observed(°)	Ideal(°)
2	C	701	ADP	C4'-O4'-C1'	-8.41	100.73	109.64
3	B	701	AMP	N3-C2-N1	-8.01	122.58	128.87
2	B	702	ADP	N3-C2-N1	-7.71	122.81	128.87
2	A	701	ADP	N3-C2-N1	-6.95	123.41	128.87
2	C	701	ADP	N3-C2-N1	-6.47	123.79	128.87

There are no chirality outliers.

There are no torsion outliers.

There are no ring outliers.

6 monomers are involved in 45 short contacts:

Mol	Chain	Res	Type	Clashes	Symm-Clashes
2	A	701	ADP	15	0
2	A	702	ADP	10	0
3	B	701	AMP	1	0
2	B	702	ADP	13	0
2	C	701	ADP	4	0
4	D	701	RIB	2	0

5.7 Other polymers [i](#)

There are no such residues in this entry.

5.8 Polymer linkage issues [i](#)

There are no chain breaks in this entry.

6 Fit of model and data [i](#)

6.1 Protein, DNA and RNA chains [i](#)

In the following table, the column labelled ‘#RSRZ> 2’ contains the number (and percentage) of RSRZ outliers, followed by percent RSRZ outliers for the chain as percentile scores relative to all X-ray entries and entries of similar resolution. The OWAB column contains the minimum, median, 95th percentile and maximum values of the occupancy-weighted average B-factor per residue. The column labelled ‘Q< 0.9’ lists the number of (and percentage) of residues with an average occupancy less than 0.9.

Mol	Chain	Analysed	<RSRZ>	#RSRZ>2	OWAB(Å ²)	Q<0.9
1	A	288/454 (63%)	0.41	17 (5%) 26 33	22, 34, 64, 81	0
1	B	290/454 (63%)	0.36	8 (2%) 56 64	23, 35, 53, 66	0
1	C	290/454 (63%)	0.41	10 (3%) 49 58	23, 36, 55, 77	0
1	D	289/454 (63%)	0.45	27 (9%) 11 15	23, 35, 64, 79	0
All	All	1157/1816 (63%)	0.41	62 (5%) 29 37	22, 35, 59, 81	0

The worst 5 of 62 RSRZ outliers are listed below:

Mol	Chain	Res	Type	RSRZ
1	C	440	TYR	10.0
1	A	437	ASN	7.3
1	D	440	TYR	6.2
1	A	440	TYR	6.2
1	B	440	TYR	6.0

6.2 Non-standard residues in protein, DNA, RNA chains [i](#)

There are no non-standard protein/DNA/RNA residues in this entry.

6.3 Carbohydrates [i](#)

There are no carbohydrates in this entry.

6.4 Ligands [i](#)

In the following table, the Atoms column lists the number of modelled atoms in the group and the number defined in the chemical component dictionary. LLDF column lists the quality of electron density of the group with respect to its neighbouring residues in protein, DNA or RNA chains. The B-factors column lists the minimum, median, 95th percentile and maximum values of B factors

of atoms in the group. The column labelled 'Q< 0.9' lists the number of atoms with occupancy less than 0.9.

Mol	Type	Chain	Res	Atoms	RSCC	RSR	LLDF	B-factors(\AA^2)	Q<0.9
2	ADP	A	702	27/27	0.73	0.27	4.08	35,41,45,47	8
2	ADP	B	702	27/27	0.71	0.27	3.93	32,35,43,46	8
2	ADP	C	701	27/27	0.76	0.27	3.07	33,35,40,40	8
4	RIB	D	701	10/10	0.84	0.17	2.10	33,34,37,37	0
2	ADP	A	701	27/27	0.63	0.27	1.47	36,62,67,69	8
3	AMP	B	701	23/23	0.85	0.14	-0.45	40,55,60,62	4

6.5 Other polymers [i](#)

There are no such residues in this entry.