



Full wwPDB X-ray Structure Validation Report ⓘ

Jan 31, 2016 – 06:40 PM GMT

PDB ID : 1BVR
Title : M.TB. ENOYL-ACP REDUCTASE (INHA) IN COMPLEX WITH NAD+ AND C16-FATTY-ACYL-SUBSTRATE
Authors : Rozwarski, D.A.; Vilcheze, C.; Sugantino, M.; Bittman, R.; Jacobs, W.; TB Structural Genomics Consortium (TBSGC)
Deposited on : 1998-09-17
Resolution : 2.80 Å(reported)

This is a Full wwPDB X-ray Structure Validation Report for a publicly released PDB entry.
We welcome your comments at validation@mail.wwpdb.org
A user guide is available at
<http://wwpdb.org/validation/2016/XrayValidationReportHelp>
with specific help available everywhere you see the ⓘ symbol.

The following versions of software and data (see [references ⓘ](#)) were used in the production of this report:

MolProbity	:	4.02b-467
Mogul	:	1.7 (RC4), CSD as536be (2015)
Xtriage (Phenix)	:	NOT EXECUTED
EDS	:	NOT EXECUTED
Percentile statistics	:	20151230.v01 (using entries in the PDB archive December 30th 2015)
Ideal geometry (proteins)	:	Engh & Huber (2001)
Ideal geometry (DNA, RNA)	:	Parkinson et al. (1996)
Validation Pipeline (wwPDB-VP)	:	trunk26865

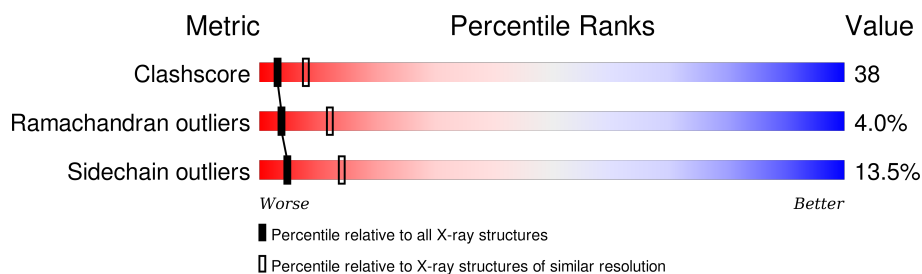
1 Overall quality at a glance

The following experimental techniques were used to determine the structure:

X-RAY DIFFRACTION

The reported resolution of this entry is 2.80 Å.

Percentile scores (ranging between 0-100) for global validation metrics of the entry are shown in the following graphic. The table shows the number of entries on which the scores are based.



Metric	Whole archive (#Entries)	Similar resolution (#Entries, resolution range(Å))
Clashscore	102246	2827 (2.80-2.80)
Ramachandran outliers	100387	2782 (2.80-2.80)
Sidechain outliers	100360	2784 (2.80-2.80)

The table below summarises the geometric issues observed across the polymeric chains and their fit to the electron density. The red, orange, yellow and green segments on the lower bar indicate the fraction of residues that contain outliers for ≥ 3 , 2, 1 and 0 types of geometric quality criteria. A grey segment represents the fraction of residues that are not modelled. The numeric value for each fraction is indicated below the corresponding segment, with a dot representing fractions $\leq 5\%$. The upper red bar (where present) indicates the fraction of residues that have poor fit to the electron density. The numeric value is given above the bar.

Note EDS was not executed.

Mol	Chain	Length	Quality of chain
1	A	268	<div> <div>50%</div> <div>45%</div> <div>5%</div> </div>
1	B	268	<div> <div>51%</div> <div>43%</div> <div>5%</div> </div>
1	C	268	<div> <div>49%</div> <div>46%</div> <div>5%</div> </div>
1	D	268	<div> <div>47%</div> <div>44%</div> <div>8%</div> </div>
1	E	268	<div> <div>21%</div> <div>53%</div> <div>23%</div> <div>•</div> </div>
1	F	268	<div> <div>47%</div> <div>47%</div> <div>6%</div> </div>

2 Entry composition [i](#)

There are 4 unique types of molecules in this entry. The entry contains 12987 atoms, of which 0 are hydrogens and 0 are deuteriums.

In the tables below, the ZeroOcc column contains the number of atoms modelled with zero occupancy, the AltConf column contains the number of residues with at least one atom in alternate conformation and the Trace column contains the number of residues modelled with at most 2 atoms.

- Molecule 1 is a protein called PROTEIN (ENOYL-ACYL CARRIER PROTEIN (ACP) REDUCTASE).

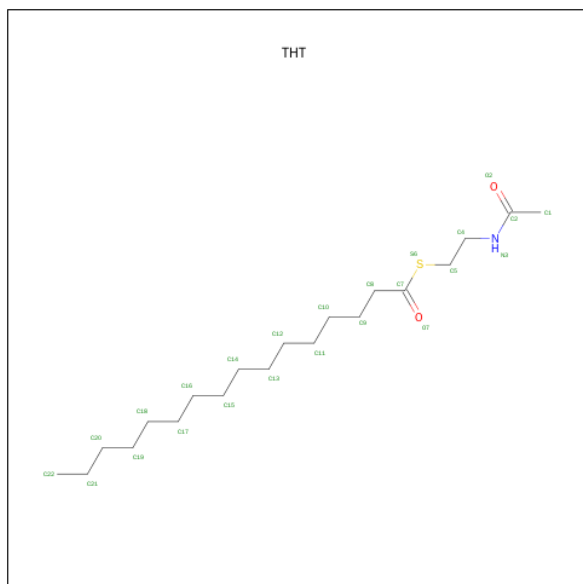
Mol	Chain	Residues	Atoms					ZeroOcc	AltConf	Trace
1	A	268	Total	C	N	O	S	0	0	0
			1994	1263	348	373	10			
1	B	268	Total	C	N	O	S	0	0	0
			1994	1263	348	373	10			
1	C	268	Total	C	N	O	S	0	0	0
			1994	1263	348	373	10			
1	D	268	Total	C	N	O	S	0	0	0
			1994	1263	348	373	10			
1	E	268	Total	C	N	O	S	0	0	0
			1994	1263	348	373	10			
1	F	268	Total	C	N	O	S	0	0	0
			1994	1263	348	373	10			

- Molecule 2 is NICOTINAMIDE-ADENINE-DINUCLEOTIDE (three-letter code: NAD) (formula: $C_{21}H_{27}N_7O_{14}P_2$).



Mol	Chain	Residues	Atoms					ZeroOcc	AltConf
2	A	1	Total	C	N	O	P	0	0
			44	21	7	14	2		
2	B	1	Total	C	N	O	P	0	0
			44	21	7	14	2		
2	C	1	Total	C	N	O	P	0	0
			44	21	7	14	2		
2	D	1	Total	C	N	O	P	0	0
			44	21	7	14	2		
2	E	1	Total	C	N	O	P	0	0
			44	21	7	14	2		
2	F	1	Total	C	N	O	P	0	0
			44	21	7	14	2		

- Molecule 3 is TRANS-2-HEXADECENOYL-(N-ACETYL-CYSTEAMINE)-THIOESTER (three-letter code: THT) (formula: $C_{20}H_{39}NO_2S$).



Mol	Chain	Residues	Atoms					ZeroOcc	AltConf
3	A	1	Total	C	N	O	S	0	0
			24	20	1	2	1		
3	B	1	Total	C	N	O	S	0	0
			24	20	1	2	1		
3	C	1	Total	C	N	O	S	0	0
			24	20	1	2	1		
3	F	1	Total	C	N	O	S	0	0
			24	20	1	2	1		

- Molecule 4 is water.

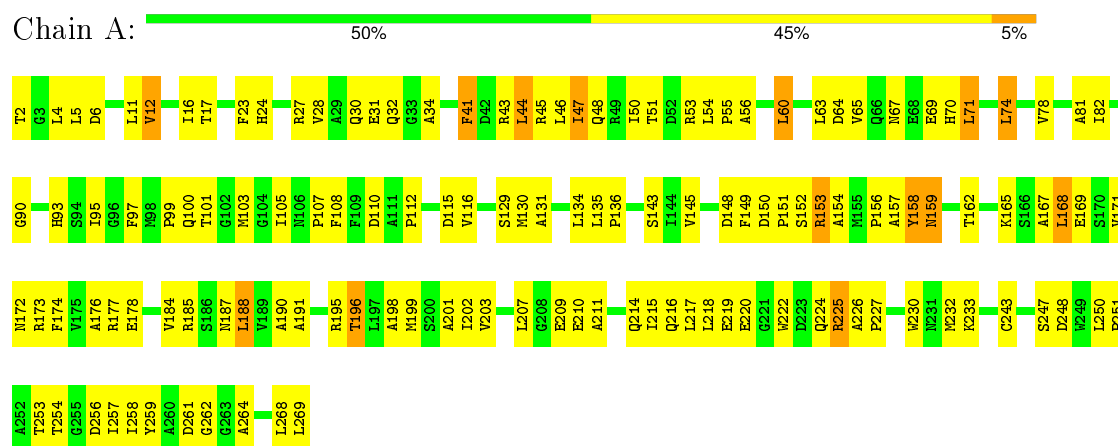
Mol	Chain	Residues	Atoms		ZeroOcc	AltConf
4	A	110	Total 110	O 110	0	0
4	B	114	Total 114	O 114	0	0
4	C	106	Total 106	O 106	0	0
4	D	104	Total 104	O 104	0	0
4	E	119	Total 119	O 119	0	0
4	F	110	Total 110	O 110	0	0

3 Residue-property plots

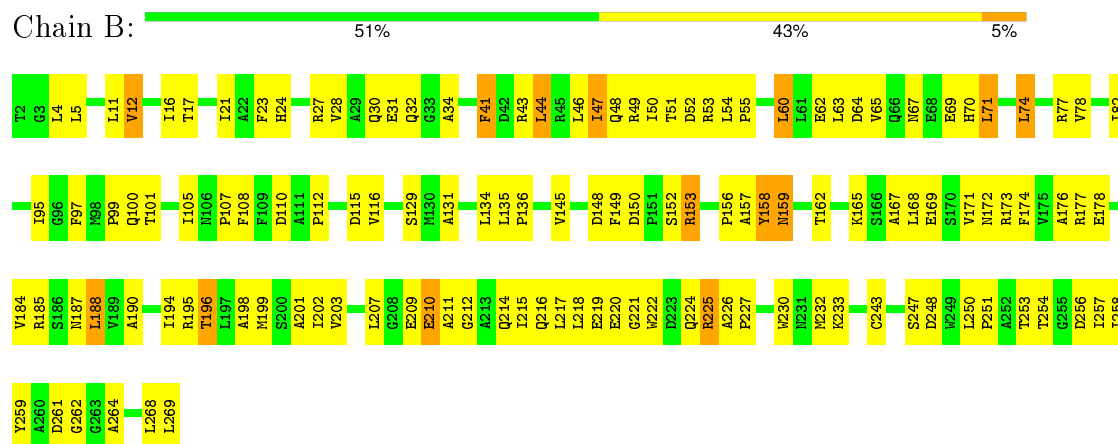
These plots are drawn for all protein, RNA and DNA chains in the entry. The first graphic for a chain summarises the proportions of errors displayed in the second graphic. The second graphic shows the sequence view annotated by issues in geometry and electron density. Residues are color-coded according to the number of geometric quality criteria for which they contain at least one outlier: green = 0, yellow = 1, orange = 2 and red = 3 or more. A red dot above a residue indicates a poor fit to the electron density ($RSRZ > 2$). Stretches of 2 or more consecutive residues without any outlier are shown as a green connector. Residues present in the sample, but not in the model, are shown in grey.

Note EDS was not executed.

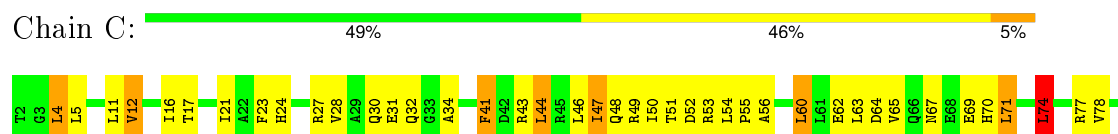
• Molecule 1: PROTEIN (ENOYL-ACYL CARRIER PROTEIN (ACP) REDUCTASE)

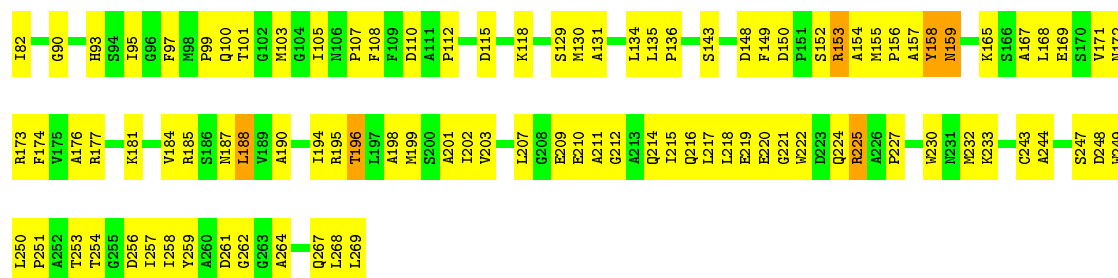


• Molecule 1: PROTEIN (ENOYL-ACYL CARRIER PROTEIN (ACP) REDUCTASE)



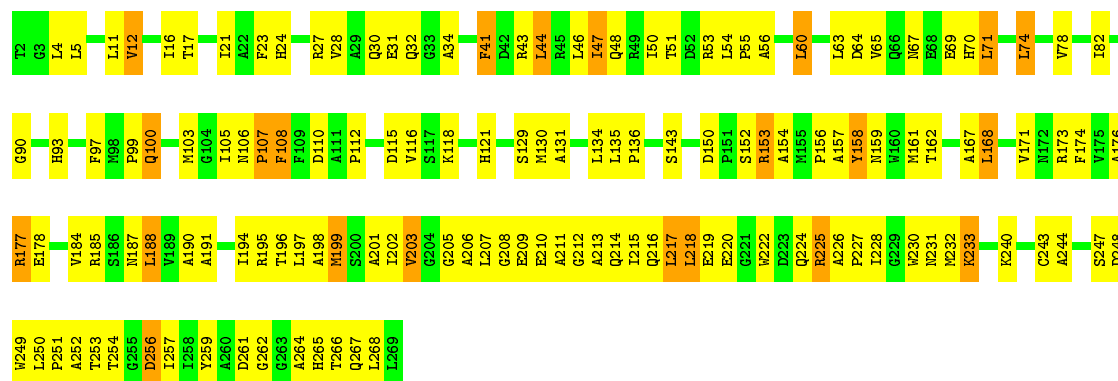
• Molecule 1: PROTEIN (ENOYL-ACYL CARRIER PROTEIN (ACP) REDUCTASE)





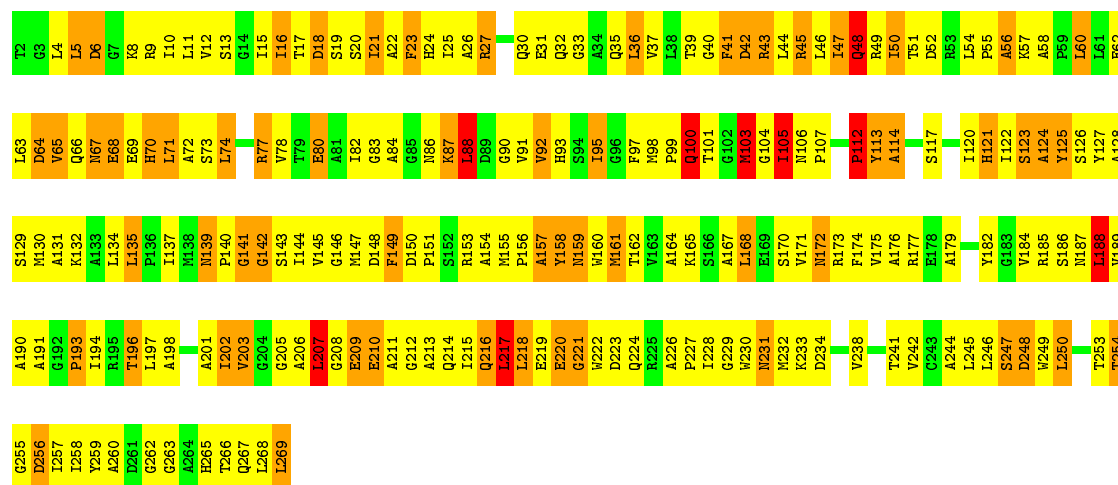
• Molecule 1: PROTEIN (ENOYL-ACYL CARRIER PROTEIN (ACP) REDUCTASE)

Chain D: 47% 44% 8%



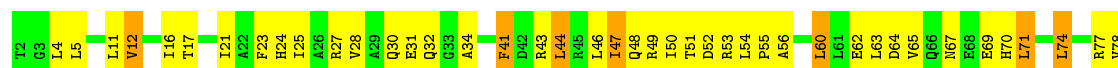
• Molecule 1: PROTEIN (ENOYL-ACYL CARRIER PROTEIN (ACP) REDUCTASE)

Chain E: 21% 53% 23%



• Molecule 1: PROTEIN (ENOYL-ACYL CARRIER PROTEIN (ACP) REDUCTASE)

Chain F: 47% 47% 6%





4 Data and refinement statistics

Xtriage (Phenix) and EDS were not executed - this section will therefore be incomplete.

Property	Value	Source
Space group	C 1 2 1	Depositor
Cell constants a, b, c, α , β , γ	101.08 Å 83.45 Å 192.81 Å 90.00° 95.24° 90.00°	Depositor
Resolution (Å)	10.00 – 2.80	Depositor
% Data completeness (in resolution range)	90.2 (10.00-2.80)	Depositor
R_{merge}	(Not available)	Depositor
R_{sym}	0.16	Depositor
Refinement program	X-PLOR	Depositor
R, R_{free}	0.217 , 0.344	Depositor
Estimated twinning fraction	No twinning to report.	Xtriage
Total number of atoms	12987	wwPDB-VP
Average B, all atoms (Å ²)	48.0	wwPDB-VP

5 Model quality

5.1 Standard geometry

Bond lengths and bond angles in the following residue types are not validated in this section: THT, NAD

The Z score for a bond length (or angle) is the number of standard deviations the observed value is removed from the expected value. A bond length (or angle) with $|Z| > 5$ is considered an outlier worth inspection. RMSZ is the root-mean-square of all Z scores of the bond lengths (or angles).

Mol	Chain	Bond lengths		Bond angles	
		RMSZ	$\# Z > 5$	RMSZ	$\# Z > 5$
1	A	0.59	0/2032	0.76	0/2758
1	B	0.60	0/2032	0.78	0/2758
1	C	0.60	0/2032	0.76	0/2758
1	D	0.65	0/2032	0.81	0/2758
1	E	0.86	0/2032	1.13	14/2758 (0.5%)
1	F	0.59	0/2032	0.77	0/2758
All	All	0.66	0/12192	0.85	14/16548 (0.1%)

Chiral center outliers are detected by calculating the chiral volume of a chiral center and verifying if the center is modelled as a planar moiety or with the opposite hand. A planarity outlier is detected by checking planarity of atoms in a peptide group, atoms in a mainchain group or atoms of a sidechain that are expected to be planar.

Mol	Chain	#Chirality outliers	#Planarity outliers
1	E	0	1

There are no bond length outliers.

All (14) bond angle outliers are listed below:

Mol	Chain	Res	Type	Atoms	Z	Observed(°)	Ideal(°)
1	E	217	LEU	CA-CB-CG	6.70	130.71	115.30
1	E	27	ARG	NE-CZ-NH1	5.96	123.28	120.30
1	E	255	GLY	N-CA-C	-5.84	98.50	113.10
1	E	188	LEU	CA-CB-CG	5.67	128.34	115.30
1	E	41	PHE	N-CA-C	5.60	126.11	111.00
1	E	135	LEU	N-CA-C	5.56	126.02	111.00
1	E	141	GLY	N-CA-C	-5.45	99.47	113.10
1	E	27	ARG	NE-CZ-NH2	-5.42	117.59	120.30
1	E	88	LEU	CA-CB-CG	5.40	127.72	115.30
1	E	5	LEU	CA-CB-CG	5.36	127.62	115.30

Continued on next page...

Continued from previous page...

Mol	Chain	Res	Type	Atoms	Z	Observed(°)	Ideal(°)
1	E	100	GLN	N-CA-C	5.30	125.31	111.00
1	E	188	LEU	CB-CG-CD2	-5.23	102.10	111.00
1	E	250	LEU	N-CA-C	-5.18	97.01	111.00
1	E	87	LYS	N-CA-C	5.02	124.56	111.00

There are no chirality outliers.

All (1) planarity outliers are listed below:

Mol	Chain	Res	Type	Group
1	E	113	TYR	Sidechain

5.2 Too-close contacts

In the following table, the Non-H and H(model) columns list the number of non-hydrogen atoms and hydrogen atoms in the chain respectively. The H(added) column lists the number of hydrogen atoms added and optimized by MolProbity. The Clashes column lists the number of clashes within the asymmetric unit, whereas Symm-Clashes lists symmetry related clashes.

Mol	Chain	Non-H	H(model)	H(added)	Clashes	Symm-Clashes
1	A	1994	0	2008	127	0
1	B	1994	0	2008	121	0
1	C	1994	0	2008	150	0
1	D	1994	0	2008	136	0
1	E	1994	0	2008	338	0
1	F	1994	0	2008	141	0
2	A	44	0	26	2	0
2	B	44	0	26	1	0
2	C	44	0	26	1	0
2	D	44	0	26	2	0
2	E	44	0	25	9	0
2	F	44	0	26	1	0
3	A	24	0	39	17	0
3	B	24	0	39	15	0
3	C	24	0	39	17	0
3	F	24	0	39	17	0
4	A	110	0	0	13	0
4	B	114	0	0	15	0
4	C	106	0	0	11	0
4	D	104	0	0	11	0
4	E	119	0	0	46	0
4	F	110	0	0	13	0

Continued on next page...

Continued from previous page...

Mol	Chain	Non-H	H(model)	H(added)	Clashes	Symm-Clashes
All	All	12987	0	12359	948	0

The all-atom clashscore is defined as the number of clashes found per 1000 atoms (including hydrogen atoms). The all-atom clashscore for this structure is 38.

All (948) close contacts within the same asymmetric unit are listed below, sorted by their clash magnitude.

Atom-1	Atom-2	Interatomic distance (Å)	Clash overlap (Å)
1:F:198:ALA:HB2	3:F:1310:THT:HC12	1.22	1.15
1:A:198:ALA:HB2	3:A:1302:THT:HC12	1.18	1.08
1:B:198:ALA:HB2	3:B:1304:THT:HC12	1.25	1.08
1:C:198:ALA:HB2	3:C:1306:THT:HC12	1.19	1.08
1:E:135:LEU:HD11	1:E:144:ILE:HD11	1.38	1.02
1:E:156:PRO:HB3	1:F:177:ARG:NH1	1.83	0.93
1:E:6:ASP:HA	1:E:33:GLY:HA3	1.50	0.91
1:E:233:LYS:HG2	4:E:445:HOH:O	1.70	0.91
1:E:224:GLN:HA	4:E:499:HOH:O	1.72	0.90
1:E:187:ASN:OD1	1:E:254:THR:HA	1.71	0.89
1:E:47:ILE:O	1:E:47:ILE:HG13	1.73	0.88
1:C:155:MET:SD	1:E:268:LEU:HD23	2.16	0.85
1:E:100:GLN:HE22	1:E:105:ILE:HD12	1.41	0.85
1:D:178:GLU:HG3	4:D:1312:HOH:O	1.78	0.84
1:E:100:GLN:NE2	1:E:105:ILE:HD12	1.92	0.84
1:C:269:LEU:HD21	1:E:218:LEU:HD13	1.58	0.83
1:D:208:GLY:HA2	1:D:212:GLY:HA3	1.59	0.83
1:E:213:ALA:O	1:E:217:LEU:HB2	1.79	0.82
1:E:43:ARG:O	1:E:46:LEU:HB3	1.79	0.82
1:A:198:ALA:CB	3:A:1302:THT:HC12	2.07	0.82
1:D:105:ILE:HD12	1:D:211:ALA:HB3	1.62	0.82
1:E:48:GLN:HA	4:E:500:HOH:O	1.79	0.80
1:E:93:HIS:O	1:E:146:GLY:HA2	1.80	0.80
1:A:225:ARG:HB2	1:A:225:ARG:NH1	1.96	0.80
1:D:158:TYR:HB3	1:D:162:THR:OG1	1.81	0.80
1:C:199:MET:O	1:C:203:VAL:HG23	1.81	0.80
1:F:17:THR:HA	1:F:50:ILE:HD13	1.64	0.79
1:D:215:ILE:O	1:D:219:GLU:HG3	1.83	0.79
1:B:158:TYR:HE1	3:B:1304:THT:HC92	1.47	0.79
1:C:225:ARG:HB2	1:C:225:ARG:NH1	1.98	0.79
1:A:225:ARG:HB2	1:A:225:ARG:HH11	1.48	0.78
1:B:158:TYR:CE1	3:B:1304:THT:HC92	2.17	0.78
1:E:12:VAL:HA	1:E:92:VAL:HG23	1.63	0.78

Continued on next page...

Continued from previous page...

Atom-1	Atom-2	Interatomic distance (Å)	Clash overlap (Å)
1:C:155:MET:HB2	1:E:269:LEU:HD23	1.65	0.78
1:E:144:ILE:O	1:E:186:SER:HA	1.84	0.77
1:D:225:ARG:NH1	1:D:225:ARG:HB2	1.99	0.77
1:E:101:THR:HA	1:E:106:ASN:HB3	1.65	0.77
1:C:225:ARG:HH12	1:C:264:ALA:HB1	1.49	0.77
1:C:198:ALA:CB	3:C:1306:THT:HC12	2.10	0.77
1:C:225:ARG:HB2	1:C:225:ARG:HH11	1.50	0.77
1:C:158:TYR:CE1	3:C:1306:THT:HC92	2.20	0.76
1:C:5:LEU:HB3	1:C:34:ALA:HB2	1.67	0.76
1:A:225:ARG:HH12	1:A:264:ALA:HB1	1.50	0.76
1:A:17:THR:HA	1:A:50:ILE:HD13	1.66	0.76
1:F:158:TYR:CE1	3:F:1310:THT:HC92	2.20	0.76
1:D:213:ALA:O	1:D:216:GLN:HB2	1.85	0.76
1:E:98:MET:SD	1:E:161:MET:HB2	2.26	0.75
1:A:5:LEU:HB3	1:A:34:ALA:HB2	1.66	0.75
1:E:156:PRO:HB3	1:F:177:ARG:HH12	1.49	0.75
1:E:67:ASN:HD22	1:E:68:GLU:N	1.84	0.75
1:A:199:MET:O	1:A:203:VAL:HG23	1.86	0.75
1:B:17:THR:HA	1:B:50:ILE:HD13	1.67	0.75
1:C:153:ARG:HE	1:E:153:ARG:CZ	2.00	0.75
1:A:108:PHE:HD2	4:B:1309:HOH:O	1.69	0.74
1:D:201:ALA:HB1	1:D:206:ALA:HB3	1.67	0.74
1:F:108:PHE:HD1	1:F:159:ASN:HB3	1.51	0.74
1:C:17:THR:HA	1:C:50:ILE:HD13	1.69	0.74
1:F:5:LEU:HB3	1:F:34:ALA:HB2	1.69	0.74
1:F:225:ARG:NH1	1:F:225:ARG:HB2	2.02	0.74
1:C:108:PHE:HD1	1:C:159:ASN:HB3	1.52	0.74
1:B:225:ARG:HB2	1:B:225:ARG:NH1	2.03	0.74
1:E:188:LEU:O	1:E:257:ILE:HA	1.89	0.73
1:D:225:ARG:HH11	1:D:225:ARG:HB2	1.54	0.73
1:B:207:LEU:HD23	1:B:211:ALA:HB1	1.70	0.73
1:B:44:LEU:O	1:B:48:GLN:HB2	1.89	0.73
1:E:131:ALA:O	1:E:135:LEU:HD13	1.88	0.72
1:E:155:MET:SD	4:E:469:HOH:O	2.48	0.72
1:B:5:LEU:HB3	1:B:34:ALA:HB2	1.70	0.72
1:C:156:PRO:HD2	1:E:269:LEU:HD23	1.70	0.72
1:D:107:PRO:HB2	1:D:110:ASP:OD2	1.90	0.72
1:E:37:VAL:HG21	1:E:78:VAL:HG13	1.71	0.72
1:E:134:LEU:O	1:E:137:ILE:HG13	1.89	0.72
1:E:174:PHE:CE2	1:F:159:ASN:HA	2.24	0.71
1:F:158:TYR:HE1	3:F:1310:THT:HC92	1.55	0.71

Continued on next page...

Continued from previous page...

Atom-1	Atom-2	Interatomic distance (Å)	Clash overlap (Å)
1:C:158:TYR:HE1	3:C:1306:THT:HC92	1.53	0.71
1:E:214:GLN:O	1:E:217:LEU:HB3	1.89	0.71
1:A:202:ILE:HD13	1:A:215:ILE:HG21	1.72	0.71
1:E:91:VAL:HB	1:E:144:ILE:HA	1.73	0.70
1:E:207:LEU:CD2	1:E:211:ALA:HB3	2.21	0.70
1:C:207:LEU:HD23	1:C:211:ALA:HB1	1.74	0.70
1:D:131:ALA:O	1:D:135:LEU:HB2	1.91	0.70
1:F:225:ARG:HH12	1:F:264:ALA:HB1	1.55	0.70
1:F:199:MET:O	1:F:203:VAL:HG23	1.91	0.70
1:E:17:THR:HG21	1:E:197:LEU:HD23	1.72	0.70
1:D:17:THR:HA	1:D:50:ILE:HD13	1.73	0.70
1:E:95:ILE:HG23	1:E:122:ILE:CG2	2.20	0.70
1:E:128:ALA:HB2	1:E:171:VAL:CG1	2.22	0.70
1:E:74:LEU:HD22	1:E:74:LEU:O	1.92	0.70
1:B:198:ALA:CB	3:B:1304:THT:HC12	2.15	0.70
1:A:178:GLU:HG3	4:A:1412:HOH:O	1.92	0.70
1:B:202:ILE:HD13	1:B:215:ILE:HG21	1.74	0.70
1:E:95:ILE:HG23	1:E:122:ILE:HG22	1.74	0.70
1:E:176:ALA:HB1	1:E:254:THR:HG23	1.73	0.69
1:E:15:ILE:HG12	1:E:22:ALA:HB1	1.71	0.69
1:F:46:LEU:HD21	4:F:1365:HOH:O	1.92	0.69
1:F:44:LEU:O	1:F:48:GLN:HB2	1.92	0.69
1:A:44:LEU:O	1:A:48:GLN:HB2	1.92	0.69
1:D:5:LEU:HB3	1:D:34:ALA:HB2	1.73	0.69
1:A:108:PHE:HD1	1:A:159:ASN:HB3	1.57	0.69
1:E:10:ILE:HG23	1:E:90:GLY:HA3	1.74	0.69
1:B:225:ARG:HH12	1:B:264:ALA:HB1	1.57	0.69
1:A:149:PHE:CE2	3:A:1302:THT:H102	2.27	0.69
1:F:5:LEU:HD21	1:F:243:CYS:HB3	1.75	0.69
1:D:44:LEU:O	1:D:48:GLN:HB2	1.92	0.69
1:E:105:ILE:HG21	1:E:207:LEU:HD11	1.73	0.69
1:E:43:ARG:HB2	1:E:46:LEU:HB3	1.75	0.69
1:E:10:ILE:HD13	1:E:246:LEU:HD13	1.74	0.69
1:E:151:PRO:HG3	1:E:165:LYS:HB3	1.74	0.69
1:A:158:TYR:CE1	3:A:1302:THT:HC92	2.27	0.69
1:E:15:ILE:HG12	1:E:22:ALA:CB	2.23	0.69
1:D:225:ARG:HH12	1:D:264:ALA:HB1	1.56	0.69
1:F:225:ARG:HH11	1:F:225:ARG:HB2	1.55	0.69
1:D:5:LEU:HD21	1:D:243:CYS:HB3	1.73	0.69
1:B:199:MET:O	1:B:203:VAL:HG23	1.93	0.69
1:D:249:TRP:CD2	1:E:4:LEU:HD11	2.28	0.69

Continued on next page...

Continued from previous page...

Atom-1	Atom-2	Interatomic distance (Å)	Clash overlap (Å)
1:F:207:LEU:HD23	1:F:211:ALA:HB1	1.74	0.69
1:B:108:PHE:HD1	1:B:159:ASN:HB3	1.56	0.69
1:B:225:ARG:HB2	1:B:225:ARG:HH11	1.59	0.68
1:C:44:LEU:O	1:C:48:GLN:HB2	1.92	0.68
1:A:158:TYR:HE1	3:A:1302:THT:HC92	1.58	0.68
1:A:45:ARG:HG3	1:C:136:PRO:HB3	1.75	0.68
1:A:149:PHE:CZ	3:A:1302:THT:H111	2.29	0.68
1:E:63:LEU:HG	1:E:64:ASP:H	1.56	0.68
1:C:135:LEU:HB3	1:C:136:PRO:HD3	1.75	0.68
1:E:207:LEU:HD23	1:E:211:ALA:HB3	1.74	0.68
4:A:1412:HOH:O	1:B:108:PHE:HD2	1.77	0.68
1:D:67:ASN:HB3	1:D:70:HIS:HD2	1.59	0.68
1:C:202:ILE:HD13	1:C:215:ILE:HG21	1.75	0.67
1:C:153:ARG:HE	1:E:153:ARG:NH1	1.92	0.67
1:D:64:ASP:HB3	1:D:70:HIS:CD2	2.29	0.67
1:F:202:ILE:HD13	1:F:215:ILE:HG21	1.75	0.67
1:D:199:MET:O	1:D:202:ILE:HG22	1.93	0.67
1:C:244:ALA:HB2	1:F:249:TRP:HB3	1.75	0.67
1:C:43:ARG:HD2	1:C:46:LEU:HD13	1.76	0.67
1:A:135:LEU:HB3	1:A:136:PRO:HD3	1.77	0.67
1:E:171:VAL:O	1:E:175:VAL:HG23	1.94	0.67
1:A:64:ASP:HB3	1:A:70:HIS:CD2	2.30	0.67
1:E:173:ARG:O	1:E:176:ALA:HB3	1.95	0.67
1:B:5:LEU:HD21	1:B:243:CYS:HB3	1.76	0.67
1:D:27:ARG:O	1:D:31:GLU:HG3	1.94	0.67
1:E:20:SER:HA	1:E:196:THR:HG22	1.76	0.67
1:D:112:PRO:O	1:D:116:VAL:HG23	1.95	0.67
1:E:57:LYS:HE2	4:E:521:HOH:O	1.94	0.67
1:A:60:LEU:HG	4:A:1370:HOH:O	1.95	0.67
1:D:225:ARG:HD2	4:D:1363:HOH:O	1.95	0.66
1:A:5:LEU:HD21	1:A:243:CYS:HB3	1.76	0.66
1:C:249:TRP:HB3	1:F:244:ALA:HB2	1.76	0.66
1:F:16:ILE:HD12	1:F:47:ILE:HG21	1.78	0.66
1:A:16:ILE:HD12	1:A:47:ILE:HG21	1.77	0.66
1:A:131:ALA:O	1:A:135:LEU:HB2	1.96	0.66
1:E:48:GLN:HG2	4:E:500:HOH:O	1.94	0.66
4:A:1390:HOH:O	1:C:181:LYS:HB3	1.96	0.66
1:E:122:ILE:HG21	2:E:1308:NAD:C5A	2.26	0.66
1:E:198:ALA:O	1:E:202:ILE:HG12	1.96	0.65
1:E:105:ILE:O	1:E:107:PRO:HD3	1.96	0.65
1:B:43:ARG:HD2	1:B:46:LEU:HD13	1.76	0.65

Continued on next page...

Continued from previous page...

Atom-1	Atom-2	Interatomic distance (Å)	Clash overlap (Å)
1:E:114:ALA:HB1	4:E:545:HOH:O	1.96	0.65
1:E:77:ARG:O	4:E:538:HOH:O	2.14	0.65
1:A:207:LEU:HD23	1:A:211:ALA:HB1	1.79	0.65
1:E:159:ASN:HA	1:F:174:PHE:CE2	2.32	0.65
1:F:198:ALA:CB	3:F:1310:THT:HC12	2.14	0.65
4:E:663:HOH:O	1:F:108:PHE:HD2	1.80	0.65
1:B:225:ARG:HD2	4:B:1362:HOH:O	1.96	0.65
1:A:43:ARG:HD2	1:A:46:LEU:HD13	1.77	0.65
1:C:149:PHE:CZ	3:C:1306:THT:H111	2.32	0.64
1:E:179:ALA:O	1:E:182:TYR:HB2	1.97	0.64
1:F:219:GLU:OE1	1:F:232:MET:SD	2.55	0.64
1:E:68:GLU:OE1	1:E:71:LEU:HD23	1.98	0.64
1:C:99:PRO:HB2	1:C:101:THR:HG22	1.79	0.64
1:A:67:ASN:HB3	1:A:70:HIS:HD2	1.62	0.64
1:E:27:ARG:O	1:E:31:GLU:HG3	1.97	0.64
1:C:67:ASN:HB3	1:C:70:HIS:HD2	1.63	0.64
1:F:43:ARG:HD2	1:F:46:LEU:HD13	1.79	0.64
1:A:46:LEU:HD21	4:A:1352:HOH:O	1.98	0.64
1:B:135:LEU:HB3	1:B:136:PRO:HD3	1.80	0.64
1:C:149:PHE:CE2	3:C:1306:THT:H102	2.32	0.64
1:E:44:LEU:HA	1:E:47:ILE:HG23	1.78	0.64
1:D:201:ALA:HA	1:D:206:ALA:H	1.63	0.64
1:E:265:HIS:HB2	4:E:473:HOH:O	1.98	0.64
1:E:50:ILE:HG22	1:E:51:THR:N	2.13	0.64
1:E:65:VAL:HG12	1:E:71:LEU:HD11	1.80	0.64
1:B:202:ILE:HG21	3:B:1304:THT:C19	2.28	0.64
1:E:12:VAL:HG22	1:E:92:VAL:CG2	2.28	0.63
1:B:131:ALA:O	1:B:135:LEU:HB2	1.98	0.63
1:B:158:TYR:CD1	3:B:1304:THT:H112	2.33	0.63
1:C:155:MET:HB3	1:E:268:LEU:HB3	1.80	0.63
1:C:64:ASP:HB3	1:C:70:HIS:CD2	2.33	0.63
1:E:113:TYR:OH	1:F:120:ILE:HG22	1.99	0.63
1:D:135:LEU:HB3	1:D:136:PRO:HD3	1.81	0.63
1:F:225:ARG:HD2	4:F:1367:HOH:O	1.98	0.63
1:B:202:ILE:HG22	1:B:207:LEU:HD22	1.80	0.63
1:E:18:ASP:HA	1:E:23:PHE:CG	2.33	0.63
1:C:43:ARG:O	1:C:47:ILE:HG12	1.98	0.63
1:F:64:ASP:HB3	1:F:70:HIS:CD2	2.32	0.63
1:B:67:ASN:HB3	1:B:70:HIS:HD2	1.64	0.63
1:E:161:MET:O	1:E:161:MET:HG3	1.99	0.62
1:A:215:ILE:HG12	3:A:1302:THT:H141	1.81	0.62

Continued on next page...

Continued from previous page...

Atom-1	Atom-2	Interatomic distance (Å)	Clash overlap (Å)
1:A:225:ARG:NH1	1:A:264:ALA:HB1	2.14	0.62
1:C:78:VAL:O	1:C:82:ILE:HG12	1.99	0.62
1:E:101:THR:HA	1:E:106:ASN:CB	2.29	0.62
1:B:43:ARG:O	1:B:47:ILE:HG12	2.00	0.62
1:D:108:PHE:HD2	1:D:159:ASN:HB3	1.64	0.62
1:D:43:ARG:O	1:D:47:ILE:HG12	2.00	0.62
1:D:67:ASN:OD1	1:D:69:GLU:HB2	1.99	0.62
1:D:214:GLN:O	1:D:218:LEU:HB2	2.00	0.62
1:B:64:ASP:HB3	1:B:70:HIS:CD2	2.35	0.62
1:B:16:ILE:HD12	1:B:47:ILE:HG21	1.81	0.62
1:F:149:PHE:CZ	3:F:1310:THT:H111	2.34	0.62
1:C:112:PRO:HG2	1:C:115:ASP:OD1	1.99	0.62
1:D:215:ILE:HD12	1:D:215:ILE:H	1.64	0.62
1:D:249:TRP:O	1:E:241:THR:HA	2.00	0.62
1:E:30:GLN:HG2	1:E:55:PRO:O	1.98	0.62
1:F:67:ASN:HB3	1:F:70:HIS:HD2	1.65	0.62
1:C:71:LEU:O	1:C:74:LEU:HB2	2.00	0.61
1:B:202:ILE:CG2	3:B:1304:THT:H191	2.30	0.61
1:A:202:ILE:HG22	1:A:207:LEU:HD22	1.81	0.61
1:B:158:TYR:CE1	3:B:1304:THT:H112	2.36	0.61
1:C:227:PRO:HD2	1:C:262:GLY:O	2.00	0.61
1:E:212:GLY:O	1:E:215:ILE:HG22	2.00	0.61
1:B:207:LEU:HD23	1:B:211:ALA:CB	2.31	0.61
1:C:16:ILE:HD12	1:C:47:ILE:HG21	1.81	0.61
1:F:99:PRO:HB2	1:F:101:THR:HG22	1.82	0.61
1:E:47:ILE:O	1:E:51:THR:HG23	2.01	0.61
1:E:127:TYR:CZ	1:E:144:ILE:HG22	2.36	0.61
1:C:267:GLN:OE1	1:E:154:ALA:HB3	2.01	0.61
1:E:51:THR:O	1:E:54:LEU:HB2	1.99	0.61
1:D:202:ILE:HA	1:D:207:LEU:HB2	1.83	0.61
1:B:46:LEU:HD21	4:B:1360:HOH:O	2.01	0.61
1:E:228:ILE:HD12	1:E:229:GLY:O	2.01	0.61
1:E:22:ALA:O	1:E:24:HIS:N	2.34	0.61
1:C:225:ARG:NH1	1:C:264:ALA:HB1	2.16	0.61
1:E:97:PHE:HB2	2:E:1308:NAD:H8A	1.82	0.60
1:A:16:ILE:HD12	1:A:47:ILE:CG2	2.31	0.60
1:F:215:ILE:HG12	3:F:1310:THT:H141	1.82	0.60
1:E:54:LEU:HD13	1:E:55:PRO:HD2	1.81	0.60
1:D:208:GLY:HA2	1:D:212:GLY:CA	2.29	0.60
1:C:225:ARG:HD2	4:C:1355:HOH:O	2.00	0.60
1:A:225:ARG:HD2	4:A:1354:HOH:O	2.00	0.60

Continued on next page...

Continued from previous page...

Atom-1	Atom-2	Interatomic distance (Å)	Clash overlap (Å)
1:F:43:ARG:O	1:F:47:ILE:HG12	2.01	0.60
1:C:131:ALA:O	1:C:135:LEU:HB2	2.00	0.60
1:E:121:HIS:CD2	4:E:504:HOH:O	2.55	0.60
1:F:135:LEU:HB3	1:F:136:PRO:HD3	1.83	0.60
1:C:108:PHE:HD2	4:D:1312:HOH:O	1.83	0.60
1:B:202:ILE:HG21	3:B:1304:THT:H191	1.84	0.60
1:B:149:PHE:CE2	3:B:1304:THT:H102	2.37	0.60
1:C:153:ARG:HH21	1:E:153:ARG:NH2	2.00	0.60
1:F:131:ALA:O	1:F:135:LEU:HB2	2.01	0.60
1:B:219:GLU:OE1	1:B:232:MET:SD	2.59	0.60
1:F:227:PRO:HD2	1:F:262:GLY:O	2.02	0.60
1:E:23:PHE:CD1	1:E:23:PHE:O	2.54	0.60
1:F:16:ILE:HD12	1:F:47:ILE:CG2	2.32	0.60
1:C:202:ILE:HG21	3:C:1306:THT:C19	2.31	0.60
1:C:5:LEU:HD21	1:C:243:CYS:HB3	1.82	0.60
1:E:78:VAL:O	1:E:82:ILE:HG12	2.02	0.60
1:C:156:PRO:CD	1:E:269:LEU:HB2	2.32	0.59
1:C:46:LEU:HD21	4:C:1353:HOH:O	2.01	0.59
1:A:71:LEU:O	1:A:74:LEU:HB2	2.01	0.59
1:E:87:LYS:HB2	1:E:139:ASN:HD21	1.66	0.59
1:A:99:PRO:HB2	1:A:101:THR:HG22	1.84	0.59
1:E:26:ALA:O	1:E:30:GLN:HB2	2.02	0.59
1:C:158:TYR:CD1	3:C:1306:THT:H112	2.36	0.59
1:F:149:PHE:CE1	3:F:1310:THT:H102	2.37	0.59
1:F:202:ILE:HG21	3:F:1310:THT:C19	2.32	0.59
1:D:60:LEU:HG	4:D:1379:HOH:O	2.02	0.59
1:E:63:LEU:CG	1:E:64:ASP:H	2.15	0.59
1:D:187:ASN:HD21	1:D:253:THR:HG23	1.68	0.59
1:E:265:HIS:HB3	4:E:477:HOH:O	2.03	0.59
1:F:78:VAL:O	1:F:82:ILE:HG12	2.03	0.59
1:E:21:ILE:HD11	1:E:194:ILE:HD13	1.85	0.59
1:A:227:PRO:HD2	1:A:262:GLY:O	2.02	0.59
1:F:225:ARG:NH1	1:F:264:ALA:HB1	2.18	0.59
1:E:49:ARG:O	1:E:49:ARG:HD2	2.03	0.59
1:B:78:VAL:O	1:B:82:ILE:HG12	2.02	0.59
1:B:99:PRO:HB2	1:B:101:THR:HG22	1.84	0.59
1:F:202:ILE:HG22	1:F:207:LEU:HD22	1.85	0.58
1:B:149:PHE:CZ	3:B:1304:THT:H111	2.38	0.58
1:E:162:THR:HA	1:E:165:LYS:HB2	1.84	0.58
1:E:202:ILE:HG23	1:E:207:LEU:HD22	1.84	0.58
1:D:222:TRP:HE1	1:D:261:ASP:HB2	1.68	0.58

Continued on next page...

Continued from previous page...

Atom-1	Atom-2	Interatomic distance (Å)	Clash overlap (Å)
1:B:178:GLU:HG3	4:B:1309:HOH:O	2.03	0.58
1:D:67:ASN:HB3	1:D:70:HIS:CD2	2.38	0.58
1:E:104:GLY:HA2	1:E:159:ASN:ND2	2.19	0.58
1:E:127:TYR:CE2	1:E:172:ASN:HB2	2.38	0.58
1:E:247:SER:HB2	4:E:435:HOH:O	2.04	0.58
1:D:240:LYS:HG2	1:E:249:TRP:CZ3	2.38	0.58
1:B:227:PRO:HD2	1:B:262:GLY:O	2.03	0.58
1:E:65:VAL:HA	1:E:71:LEU:HD21	1.85	0.58
1:D:16:ILE:HD12	1:D:47:ILE:HG21	1.86	0.58
1:B:215:ILE:HG12	3:B:1304:THT:H141	1.86	0.58
1:C:16:ILE:HD12	1:C:47:ILE:CG2	2.34	0.58
1:F:112:PRO:HG2	1:F:115:ASP:OD1	2.04	0.58
1:E:21:ILE:HG22	1:E:22:ALA:N	2.19	0.57
1:D:219:GLU:OE1	1:D:232:MET:SD	2.61	0.57
1:C:27:ARG:O	1:C:31:GLU:HG3	2.04	0.57
1:C:207:LEU:HD23	1:C:211:ALA:CB	2.34	0.57
1:C:155:MET:SD	1:E:268:LEU:CD2	2.91	0.57
1:C:202:ILE:CG2	3:C:1306:THT:H191	2.34	0.57
1:C:156:PRO:HD3	1:E:269:LEU:HB2	1.85	0.57
1:E:46:LEU:HD21	4:E:482:HOH:O	2.03	0.57
1:E:230:TRP:HE3	4:E:446:HOH:O	1.87	0.57
1:E:48:GLN:NE2	4:E:500:HOH:O	2.34	0.57
1:E:122:ILE:HD12	1:E:122:ILE:N	2.20	0.57
1:B:112:PRO:HG2	1:B:115:ASP:OD1	2.05	0.57
1:C:158:TYR:CE1	3:C:1306:THT:H112	2.39	0.57
1:C:202:ILE:HG22	1:C:207:LEU:HD22	1.86	0.57
1:C:215:ILE:HG12	3:C:1306:THT:H141	1.86	0.57
1:B:71:LEU:O	1:B:74:LEU:HB2	2.04	0.57
1:F:24:HIS:O	1:F:28:VAL:HG23	2.05	0.57
1:C:202:ILE:HG21	3:C:1306:THT:H191	1.87	0.57
1:E:114:ALA:HB2	4:E:467:HOH:O	2.04	0.57
1:D:244:ALA:HB2	1:E:249:TRP:HB3	1.86	0.57
1:D:71:LEU:O	1:D:74:LEU:HB2	2.05	0.57
1:F:202:ILE:CG2	3:F:1310:THT:H191	2.35	0.57
1:E:98:MET:SD	1:E:161:MET:N	2.78	0.57
1:D:216:GLN:O	1:D:220:GLU:N	2.37	0.57
1:A:219:GLU:OE1	1:A:232:MET:SD	2.63	0.57
1:D:196:THR:H	1:D:199:MET:HB3	1.70	0.56
1:E:10:ILE:O	1:E:36:LEU:HA	2.05	0.56
1:E:149:PHE:CZ	1:E:193:PRO:HD3	2.40	0.56
1:E:259:TYR:CD2	1:E:265:HIS:NE2	2.73	0.56

Continued on next page...

Continued from previous page...

Atom-1	Atom-2	Interatomic distance (Å)	Clash overlap (Å)
1:E:87:LYS:HB2	1:E:139:ASN:ND2	2.20	0.56
1:D:78:VAL:O	1:D:82:ILE:HG12	2.05	0.56
1:D:74:LEU:HD13	1:D:134:LEU:HG	1.86	0.56
1:E:135:LEU:HD11	1:E:144:ILE:CD1	2.24	0.56
1:E:46:LEU:HD11	4:E:482:HOH:O	2.06	0.56
1:E:93:HIS:CD2	1:E:95:ILE:HB	2.40	0.56
1:C:148:ASP:HA	1:C:165:LYS:HE3	1.87	0.56
1:F:207:LEU:HD23	1:F:211:ALA:CB	2.35	0.56
1:A:159:ASN:HA	1:B:174:PHE:CE2	2.40	0.56
1:D:195:ARG:HB2	4:D:1373:HOH:O	2.06	0.56
1:D:225:ARG:NH1	1:D:264:ALA:HB1	2.21	0.56
1:A:67:ASN:HB3	1:A:70:HIS:CD2	2.41	0.56
1:D:252:ALA:HB3	1:E:260:ALA:HB1	1.88	0.56
1:E:9:ARG:NH2	1:E:86:ASN:HB3	2.20	0.56
1:A:154:ALA:HB2	1:B:173:ARG:HB3	1.88	0.56
1:E:189:VAL:HA	1:E:258:ILE:O	2.06	0.56
1:B:225:ARG:NH1	1:B:264:ALA:HB1	2.21	0.56
1:D:43:ARG:HD2	1:D:46:LEU:HD13	1.88	0.56
1:D:176:ALA:HB1	1:D:254:THR:HG22	1.88	0.56
1:F:74:LEU:HD13	1:F:134:LEU:HG	1.88	0.56
1:F:158:TYR:CD1	3:F:1310:THT:H112	2.41	0.56
1:E:12:VAL:HG22	1:E:92:VAL:HG21	1.87	0.56
1:B:60:LEU:HG	4:B:1378:HOH:O	2.05	0.56
1:B:107:PRO:HB2	1:B:110:ASP:OD2	2.06	0.56
1:A:202:ILE:HG21	3:A:1302:THT:C19	2.36	0.56
1:F:71:LEU:O	1:F:74:LEU:HB2	2.06	0.56
1:A:148:ASP:HA	1:A:165:LYS:HE3	1.88	0.56
1:C:269:LEU:HD21	1:E:218:LEU:CD1	2.34	0.55
1:E:147:MET:SD	1:E:191:ALA:N	2.78	0.55
1:E:16:ILE:HB	2:E:1308:NAD:O3B	2.06	0.55
1:F:107:PRO:HB2	1:F:110:ASP:OD2	2.06	0.55
1:A:217:LEU:HD12	1:A:218:LEU:N	2.21	0.55
1:A:248:ASP:O	1:A:251:PRO:HD3	2.06	0.55
1:F:108:PHE:CD1	1:F:159:ASN:HB3	2.37	0.55
1:D:190:ALA:HB1	4:D:1340:HOH:O	2.06	0.55
1:C:198:ALA:HB2	3:C:1306:THT:C1	2.13	0.55
1:E:191:ALA:O	2:E:1308:NAD:H5N	2.06	0.55
1:E:67:ASN:C	1:E:67:ASN:HD22	2.10	0.55
1:D:105:ILE:HG22	1:D:105:ILE:O	2.07	0.55
1:E:93:HIS:HE2	1:E:95:ILE:HG22	1.70	0.55
1:E:92:VAL:HG13	1:E:246:LEU:HD21	1.88	0.55

Continued on next page...

Continued from previous page...

Atom-1	Atom-2	Interatomic distance (Å)	Clash overlap (Å)
1:D:248:ASP:O	1:D:251:PRO:HD3	2.07	0.55
1:A:112:PRO:HG2	1:A:115:ASP:OD1	2.07	0.55
1:A:190:ALA:HB1	4:A:1331:HOH:O	2.06	0.55
1:E:209:GLU:OE2	1:E:213:ALA:HB2	2.07	0.55
1:C:268:LEU:HD13	1:E:153:ARG:HG3	1.88	0.55
1:A:185:ARG:NH2	4:A:1393:HOH:O	2.39	0.55
1:C:190:ALA:HB1	4:C:1332:HOH:O	2.07	0.55
1:F:202:ILE:HG21	3:F:1310:THT:H191	1.88	0.55
1:E:127:TYR:OH	1:E:144:ILE:HG22	2.07	0.55
1:E:83:GLY:HA3	1:E:86:ASN:HB2	1.87	0.55
1:D:112:PRO:HG2	1:D:115:ASP:OD1	2.07	0.55
1:D:46:LEU:HD21	4:D:1361:HOH:O	2.07	0.55
1:B:248:ASP:O	1:B:251:PRO:HD3	2.08	0.54
1:E:168:LEU:HD12	1:E:168:LEU:O	2.07	0.54
1:B:16:ILE:HD12	1:B:47:ILE:CG2	2.38	0.54
1:E:148:ASP:O	1:E:190:ALA:HA	2.06	0.54
1:C:219:GLU:OE1	1:C:232:MET:SD	2.65	0.54
1:B:108:PHE:CD1	1:B:159:ASN:HB3	2.42	0.54
1:E:143:SER:HA	1:E:185:ARG:O	2.08	0.54
1:D:201:ALA:HB1	1:D:206:ALA:CB	2.37	0.54
1:C:60:LEU:HG	4:C:1370:HOH:O	2.08	0.54
1:F:158:TYR:CE1	3:F:1310:THT:H112	2.42	0.54
1:A:202:ILE:HG12	3:A:1302:THT:H191	1.89	0.54
1:E:10:ILE:HB	1:E:36:LEU:HD23	1.89	0.54
1:F:67:ASN:OD1	1:F:69:GLU:HB2	2.07	0.54
1:E:105:ILE:HB	1:E:207:LEU:HD21	1.90	0.54
1:D:4:LEU:HB3	1:D:5:LEU:HD22	1.90	0.54
1:A:27:ARG:O	1:A:31:GLU:HG3	2.08	0.54
1:A:5:LEU:CB	1:A:34:ALA:HB2	2.38	0.54
1:F:190:ALA:HB1	4:F:1344:HOH:O	2.08	0.54
1:C:202:ILE:HG12	3:C:1306:THT:H191	1.90	0.53
1:F:60:LEU:HG	4:F:1383:HOH:O	2.07	0.53
1:C:101:THR:HG21	1:C:115:ASP:CG	2.29	0.53
1:B:97:PHE:CZ	1:B:99:PRO:HG3	2.42	0.53
1:F:248:ASP:O	1:F:251:PRO:HD3	2.08	0.53
1:B:148:ASP:HA	1:B:165:LYS:HE3	1.89	0.53
1:C:155:MET:CB	1:E:269:LEU:HD23	2.37	0.53
1:C:43:ARG:HB3	1:C:46:LEU:HB3	1.89	0.53
1:B:67:ASN:OD1	1:B:69:GLU:HB2	2.09	0.53
1:F:195:ARG:HB2	4:F:1377:HOH:O	2.07	0.53
1:C:107:PRO:HB2	1:C:110:ASP:OD2	2.08	0.53

Continued on next page...

Continued from previous page...

Atom-1	Atom-2	Interatomic distance (Å)	Clash overlap (Å)
1:E:182:TYR:HB3	1:E:184:VAL:HG23	1.90	0.53
1:D:201:ALA:O	1:D:207:LEU:N	2.42	0.53
1:A:67:ASN:OD1	1:A:69:GLU:HB2	2.09	0.53
1:F:148:ASP:HA	1:F:165:LYS:HE3	1.90	0.53
1:A:202:ILE:CG2	3:A:1302:THT:H191	2.39	0.53
1:C:108:PHE:CD1	1:C:159:ASN:HB3	2.38	0.53
1:D:254:THR:HG21	4:D:1332:HOH:O	2.08	0.53
1:F:103:MET:HE2	3:F:1310:THT:H202	1.91	0.53
1:C:218:LEU:HD12	1:E:269:LEU:HD21	1.90	0.53
1:E:55:PRO:O	1:E:56:ALA:HB3	2.08	0.53
1:D:201:ALA:CA	1:D:206:ALA:H	2.22	0.53
1:A:112:PRO:O	1:A:116:VAL:HG23	2.08	0.53
1:F:202:ILE:HG12	3:F:1310:THT:H191	1.89	0.53
1:D:217:LEU:HA	1:D:220:GLU:HB3	1.90	0.53
1:C:74:LEU:HD13	1:C:134:LEU:HG	1.91	0.53
1:A:158:TYR:HB3	1:A:162:THR:OG1	2.08	0.53
1:D:194:ILE:O	1:D:199:MET:SD	2.67	0.53
1:F:198:ALA:HB2	3:F:1310:THT:C1	2.16	0.52
1:E:244:ALA:HA	1:E:247:SER:OG	2.09	0.52
1:D:63:LEU:HD12	1:D:70:HIS:HB3	1.91	0.52
1:E:114:ALA:HB1	4:E:527:HOH:O	2.09	0.52
1:E:44:LEU:O	1:E:48:GLN:HB2	2.08	0.52
1:E:9:ARG:O	1:E:88:LEU:HD23	2.09	0.52
1:A:47:ILE:O	1:A:51:THR:HG23	2.09	0.52
1:F:112:PRO:O	1:F:116:VAL:HG23	2.09	0.52
1:A:30:GLN:OE1	1:A:54:LEU:HB3	2.09	0.52
1:B:202:ILE:HG12	3:B:1304:THT:H191	1.89	0.52
1:E:65:VAL:HG22	1:E:95:ILE:HD13	1.90	0.52
1:D:176:ALA:HB1	1:D:254:THR:CG2	2.39	0.52
1:E:39:THR:HG22	4:E:546:HOH:O	2.08	0.52
1:E:209:GLU:O	1:E:211:ALA:N	2.43	0.52
1:F:176:ALA:HB1	1:F:254:THR:CG2	2.40	0.52
1:E:41:PHE:HD1	1:E:42:ASP:HB2	1.74	0.52
1:A:43:ARG:HB3	1:A:46:LEU:HB3	1.90	0.52
1:B:43:ARG:HB3	1:B:46:LEU:HB3	1.90	0.52
1:A:207:LEU:HD23	1:A:211:ALA:CB	2.40	0.52
1:E:30:GLN:HG3	4:E:505:HOH:O	2.08	0.52
1:C:5:LEU:H	1:C:32:GLN:HB3	1.74	0.52
1:B:4:LEU:HD13	1:B:247:SER:HB3	1.90	0.52
1:C:67:ASN:HB3	1:C:70:HIS:CD2	2.43	0.52
1:C:63:LEU:HD12	1:C:70:HIS:HB3	1.92	0.52

Continued on next page...

Continued from previous page...

Atom-1	Atom-2	Interatomic distance (Å)	Clash overlap (Å)
1:B:196:THR:HB	4:B:1410:HOH:O	2.09	0.52
1:E:230:TRP:HH2	1:E:238:VAL:HG21	1.74	0.52
1:E:19:SER:O	1:E:196:THR:HG22	2.09	0.52
1:C:97:PHE:CZ	1:C:99:PRO:HG3	2.45	0.52
1:A:78:VAL:O	1:A:82:ILE:HG12	2.09	0.52
1:A:158:TYR:CD1	3:A:1302:THT:H112	2.45	0.52
1:B:202:ILE:HG21	3:B:1304:THT:H192	1.91	0.52
1:A:158:TYR:CE1	3:A:1302:THT:H112	2.45	0.52
1:E:187:ASN:ND2	1:E:253:THR:O	2.40	0.52
1:B:47:ILE:O	1:B:51:THR:HG23	2.10	0.52
1:F:65:VAL:HG22	2:F:1309:NAD:N1A	2.25	0.52
1:D:267:GLN:OE1	1:F:154:ALA:HB3	2.09	0.52
1:E:202:ILE:O	1:E:203:VAL:HG23	2.08	0.52
1:E:48:GLN:CG	4:E:500:HOH:O	2.55	0.52
1:A:43:ARG:O	1:A:47:ILE:HG12	2.10	0.52
1:F:101:THR:HG21	1:F:115:ASP:CG	2.30	0.52
1:B:65:VAL:HG22	2:B:1303:NAD:N1A	2.25	0.52
1:E:221:GLY:O	1:E:224:GLN:N	2.43	0.52
1:A:63:LEU:HD12	1:A:70:HIS:HB3	1.92	0.52
1:C:30:GLN:OE1	1:C:54:LEU:HB3	2.10	0.52
1:E:238:VAL:O	1:E:242:VAL:HG23	2.10	0.51
1:B:63:LEU:HD12	1:B:70:HIS:HB3	1.92	0.51
1:B:176:ALA:HB1	1:B:254:THR:CG2	2.40	0.51
1:B:27:ARG:O	1:B:31:GLU:HG3	2.10	0.51
1:E:129:SER:O	1:E:132:LYS:HG2	2.10	0.51
1:D:216:GLN:O	1:D:219:GLU:N	2.44	0.51
1:C:167:ALA:O	1:C:171:VAL:HG23	2.11	0.51
1:D:201:ALA:HA	1:D:205:GLY:HA3	1.92	0.51
1:C:154:ALA:HB2	1:D:173:ARG:HB3	1.92	0.51
1:A:24:HIS:O	1:A:28:VAL:HG23	2.10	0.51
1:A:202:ILE:CG2	1:A:207:LEU:HD22	2.40	0.51
1:C:155:MET:HB3	1:E:268:LEU:CB	2.40	0.51
1:F:67:ASN:HB3	1:F:70:HIS:CD2	2.45	0.51
1:D:47:ILE:O	1:D:51:THR:HG23	2.11	0.51
1:E:202:ILE:HG22	1:E:202:ILE:O	2.10	0.51
1:C:174:PHE:CE2	1:D:159:ASN:HA	2.45	0.51
1:F:198:ALA:HB3	4:F:1413:HOH:O	2.09	0.51
1:C:67:ASN:OD1	1:C:69:GLU:HB2	2.10	0.51
1:F:97:PHE:CZ	1:F:99:PRO:HG3	2.45	0.51
1:B:30:GLN:OE1	1:B:54:LEU:HB3	2.11	0.51
1:B:41:PHE:HB3	4:B:1387:HOH:O	2.11	0.51

Continued on next page...

Continued from previous page...

Atom-1	Atom-2	Interatomic distance (Å)	Clash overlap (Å)
1:A:65:VAL:HG22	2:A:1301:NAD:N1A	2.26	0.51
1:C:217:LEU:HD12	1:C:218:LEU:N	2.26	0.51
1:E:43:ARG:CB	1:E:46:LEU:HB3	2.40	0.51
1:A:202:ILE:HG21	3:A:1302:THT:H191	1.93	0.51
1:E:179:ALA:O	1:E:182:TYR:N	2.43	0.51
1:E:142:GLY:O	1:E:184:VAL:HG13	2.11	0.51
1:E:147:MET:SD	1:E:148:ASP:O	2.69	0.51
1:C:47:ILE:O	1:C:51:THR:HG23	2.11	0.51
1:A:187:ASN:HD21	1:A:253:THR:HG23	1.76	0.51
1:C:222:TRP:HE1	1:C:261:ASP:HB2	1.75	0.51
1:E:141:GLY:O	1:E:142:GLY:O	2.29	0.50
1:E:127:TYR:CE1	1:E:144:ILE:HG22	2.45	0.50
1:C:4:LEU:HD13	1:C:247:SER:HB3	1.93	0.50
1:A:196:THR:HB	4:A:1401:HOH:O	2.11	0.50
1:E:112:PRO:HA	1:F:125:TYR:OH	2.11	0.50
1:B:190:ALA:HB1	4:B:1339:HOH:O	2.10	0.50
1:B:198:ALA:O	1:B:201:ALA:HB3	2.11	0.50
1:E:44:LEU:HD13	1:E:62:GLU:HB2	1.92	0.50
1:E:162:THR:CA	1:E:165:LYS:HB2	2.41	0.50
1:E:154:ALA:HB2	1:F:173:ARG:HB3	1.93	0.50
1:E:41:PHE:CD1	1:E:42:ASP:HB2	2.46	0.50
1:E:191:ALA:O	2:E:1308:NAD:C5N	2.60	0.50
1:E:65:VAL:HA	1:E:71:LEU:CD2	2.41	0.50
1:D:256:ASP:OD2	1:E:259:TYR:HB2	2.11	0.50
1:C:248:ASP:O	1:C:251:PRO:HD3	2.11	0.50
1:A:195:ARG:HB2	4:A:1364:HOH:O	2.12	0.50
1:F:43:ARG:HB3	1:F:46:LEU:HB3	1.91	0.50
1:B:67:ASN:HB3	1:B:70:HIS:CD2	2.44	0.50
1:B:195:ARG:HB2	4:B:1372:HOH:O	2.12	0.50
1:E:248:ASP:HB3	4:E:479:HOH:O	2.11	0.50
1:E:129:SER:OG	1:E:130:MET:N	2.45	0.50
1:E:15:ILE:HB	1:E:47:ILE:CD1	2.42	0.50
1:D:215:ILE:HG22	1:D:219:GLU:HG3	1.92	0.50
1:C:149:PHE:CE1	3:C:1306:THT:H111	2.47	0.50
1:E:25:ILE:HD11	1:E:242:VAL:HG21	1.94	0.50
1:C:268:LEU:HB2	1:E:153:ARG:HB2	1.94	0.50
1:E:148:ASP:HB2	1:E:188:LEU:CD2	2.41	0.50
1:D:177:ARG:HA	1:E:227:PRO:HB3	1.94	0.50
1:C:176:ALA:HB1	1:C:254:THR:CG2	2.42	0.50
1:A:107:PRO:HB2	1:A:110:ASP:OD2	2.11	0.50
1:E:18:ASP:O	1:E:24:HIS:NE2	2.45	0.50

Continued on next page...

Continued from previous page...

Atom-1	Atom-2	Interatomic distance (Å)	Clash overlap (Å)
1:E:24:HIS:O	1:E:25:ILE:C	2.48	0.50
1:E:44:LEU:CD2	1:E:60:LEU:HD13	2.42	0.50
1:F:4:LEU:HD13	1:F:247:SER:HB3	1.94	0.50
1:A:174:PHE:CE2	1:B:159:ASN:HA	2.47	0.50
1:E:139:ASN:N	1:E:139:ASN:OD1	2.43	0.50
1:F:27:ARG:O	1:F:31:GLU:HG3	2.11	0.50
1:E:120:ILE:HG23	1:E:124:ALA:HB3	1.94	0.50
1:E:120:ILE:HG23	1:E:125:TYR:H	1.76	0.50
1:A:188:LEU:O	1:A:257:ILE:HA	2.12	0.50
1:E:50:ILE:CG2	1:E:51:THR:N	2.74	0.50
1:F:5:LEU:H	1:F:32:GLN:HB3	1.76	0.50
1:D:154:ALA:HB3	1:F:267:GLN:OE1	2.12	0.50
1:E:201:ALA:C	1:E:203:VAL:H	2.15	0.49
1:E:114:ALA:CB	4:E:467:HOH:O	2.59	0.49
1:D:184:VAL:HG12	1:D:185:ARG:N	2.27	0.49
1:E:95:ILE:HG23	1:E:122:ILE:HG23	1.91	0.49
1:F:47:ILE:O	1:F:51:THR:HG23	2.12	0.49
1:C:99:PRO:O	1:C:101:THR:N	2.45	0.49
1:A:156:PRO:O	1:A:157:ALA:HB3	2.11	0.49
1:B:202:ILE:CG2	1:B:207:LEU:HD22	2.41	0.49
1:E:215:ILE:O	1:E:219:GLU:HG3	2.12	0.49
1:D:97:PHE:CZ	1:D:99:PRO:HG3	2.46	0.49
1:F:217:LEU:HD12	1:F:218:LEU:N	2.27	0.49
1:E:22:ALA:C	1:E:24:HIS:N	2.66	0.49
1:D:4:LEU:HD13	1:D:247:SER:HB3	1.94	0.49
1:F:30:GLN:OE1	1:F:54:LEU:HB3	2.12	0.49
1:A:198:ALA:O	1:A:201:ALA:HB3	2.12	0.49
1:D:266:THR:HB	1:E:173:ARG:HD3	1.94	0.49
1:E:42:ASP:C	1:E:43:ARG:HG2	2.32	0.49
1:A:101:THR:HG21	1:A:115:ASP:CG	2.32	0.49
1:D:244:ALA:HB2	1:E:249:TRP:O	2.12	0.49
1:E:128:ALA:HB2	1:E:171:VAL:HG11	1.92	0.49
1:D:213:ALA:HA	1:D:216:GLN:HE21	1.78	0.49
1:E:54:LEU:CD1	1:E:55:PRO:HD2	2.43	0.49
1:F:16:ILE:O	1:F:47:ILE:HG22	2.13	0.49
1:C:24:HIS:O	1:C:28:VAL:HG23	2.13	0.49
1:D:190:ALA:HB3	1:D:259:TYR:CD2	2.48	0.49
1:E:209:GLU:HG3	1:E:210:GLU:N	2.27	0.49
1:C:159:ASN:HA	1:D:174:PHE:CE2	2.47	0.49
1:C:268:LEU:C	1:C:269:LEU:HD22	2.33	0.49
1:F:202:ILE:HG21	3:F:1310:THT:H192	1.94	0.49

Continued on next page...

Continued from previous page...

Atom-1	Atom-2	Interatomic distance (Å)	Clash overlap (Å)
1:E:71:LEU:HD13	1:E:71:LEU:HA	1.64	0.49
1:A:74:LEU:HD13	1:A:134:LEU:HG	1.94	0.49
1:C:196:THR:HB	4:C:1401:HOH:O	2.12	0.49
1:D:227:PRO:HD2	1:D:262:GLY:O	2.13	0.49
1:E:156:PRO:CB	1:F:177:ARG:HH12	2.23	0.49
1:F:222:TRP:HE1	1:F:261:ASP:HB2	1.77	0.49
1:E:47:ILE:HG12	1:E:60:LEU:HD11	1.95	0.48
1:A:93:HIS:HD2	1:A:130:MET:SD	2.36	0.48
1:A:168:LEU:HD13	1:A:188:LEU:HD21	1.94	0.48
1:C:188:LEU:O	1:C:257:ILE:HA	2.13	0.48
1:E:67:ASN:O	1:E:70:HIS:HB2	2.13	0.48
1:E:11:LEU:HD23	1:E:11:LEU:C	2.34	0.48
1:D:41:PHE:HB3	4:D:1388:HOH:O	2.13	0.48
1:C:5:LEU:HD23	1:C:32:GLN:HB2	1.94	0.48
1:C:4:LEU:HB3	1:C:5:LEU:HD22	1.95	0.48
1:E:63:LEU:HG	1:E:64:ASP:N	2.25	0.48
1:B:156:PRO:O	1:B:157:ALA:HB3	2.12	0.48
1:A:41:PHE:HB3	4:A:1379:HOH:O	2.13	0.48
1:D:208:GLY:CA	1:D:212:GLY:HA3	2.36	0.48
1:E:16:ILE:HG23	1:E:17:THR:HG23	1.96	0.48
1:E:97:PHE:CG	1:E:98:MET:N	2.80	0.48
1:A:4:LEU:HD13	1:A:247:SER:HB3	1.94	0.48
1:F:4:LEU:HB3	1:F:5:LEU:HD22	1.95	0.48
1:B:5:LEU:H	1:B:32:GLN:HB3	1.78	0.48
1:A:16:ILE:O	1:A:47:ILE:HG22	2.14	0.48
1:C:24:HIS:ND1	1:C:27:ARG:NH2	2.61	0.48
1:D:16:ILE:HD12	1:D:47:ILE:CG2	2.43	0.48
1:A:93:HIS:CD2	1:A:95:ILE:HD12	2.49	0.48
1:E:149:PHE:CE1	1:E:155:MET:SD	3.06	0.48
1:B:247:SER:HB2	4:B:1313:HOH:O	2.14	0.48
1:D:249:TRP:CD1	1:E:4:LEU:HD21	2.48	0.48
1:C:41:PHE:HB3	4:C:1379:HOH:O	2.12	0.48
1:A:103:MET:HE2	3:A:1302:THT:H202	1.96	0.48
1:A:149:PHE:CE1	3:A:1302:THT:H111	2.49	0.48
1:E:156:PRO:O	1:E:157:ALA:HB3	2.14	0.48
1:F:63:LEU:HD12	1:F:70:HIS:HB3	1.94	0.48
1:D:250:LEU:HD11	1:E:250:LEU:HD11	1.94	0.48
1:E:228:ILE:HD11	1:E:262:GLY:HA2	1.95	0.48
1:C:187:ASN:HD21	1:C:253:THR:HG23	1.79	0.48
1:A:222:TRP:HE1	1:A:261:ASP:HB2	1.77	0.48
1:E:230:TRP:CH2	1:E:238:VAL:HG21	2.49	0.48

Continued on next page...

Continued from previous page...

Atom-1	Atom-2	Interatomic distance (Å)	Clash overlap (Å)
1:B:212:GLY:O	1:B:216:GLN:HB2	2.14	0.48
1:C:202:ILE:HG21	3:C:1306:THT:H192	1.95	0.48
1:B:217:LEU:O	1:B:220:GLU:HB3	2.14	0.48
1:E:44:LEU:HD22	1:E:60:LEU:HD13	1.96	0.47
1:B:74:LEU:HD13	1:B:134:LEU:HG	1.95	0.47
1:D:11:LEU:HD23	1:D:12:VAL:N	2.29	0.47
1:C:156:PRO:O	1:C:157:ALA:HB3	2.14	0.47
1:E:20:SER:HB2	4:E:432:HOH:O	2.14	0.47
1:B:250:LEU:HB3	1:B:253:THR:HG22	1.97	0.47
1:D:93:HIS:HD2	1:D:130:MET:SD	2.37	0.47
1:E:100:GLN:HA	1:E:103:MET:HB2	1.96	0.47
1:C:153:ARG:NH2	1:E:153:ARG:NH2	2.63	0.47
1:D:5:LEU:H	1:D:32:GLN:HB3	1.79	0.47
1:D:51:THR:HG21	1:D:60:LEU:CD2	2.44	0.47
1:C:250:LEU:HB3	1:C:253:THR:HG22	1.95	0.47
1:E:184:VAL:HG12	1:E:185:ARG:N	2.30	0.47
1:E:154:ALA:O	1:E:156:PRO:HD3	2.13	0.47
1:E:105:ILE:HB	1:E:207:LEU:CD2	2.44	0.47
1:E:41:PHE:CD1	1:E:42:ASP:N	2.83	0.47
1:E:69:GLU:O	1:E:72:ALA:HB3	2.14	0.47
1:C:47:ILE:HG13	4:C:1370:HOH:O	2.15	0.47
1:D:24:HIS:O	1:D:28:VAL:HG23	2.13	0.47
1:D:30:GLN:OE1	1:D:54:LEU:HB3	2.15	0.47
1:E:93:HIS:NE2	1:E:95:ILE:HG22	2.29	0.47
1:A:5:LEU:H	1:A:32:GLN:HB3	1.80	0.47
1:B:16:ILE:O	1:B:47:ILE:HG22	2.15	0.47
1:B:188:LEU:O	1:B:257:ILE:HA	2.15	0.47
1:D:188:LEU:O	1:D:257:ILE:HA	2.13	0.47
1:A:268:LEU:C	1:A:269:LEU:HD22	2.35	0.47
1:B:222:TRP:HE1	1:B:261:ASP:HB2	1.78	0.47
1:E:254:THR:HG21	4:E:453:HOH:O	2.14	0.47
1:D:196:THR:O	1:D:198:ALA:N	2.48	0.47
1:C:173:ARG:O	1:C:176:ALA:HB3	2.15	0.47
1:D:65:VAL:HG22	2:D:1307:NAD:N1A	2.29	0.47
1:C:49:ARG:O	1:C:52:ASP:HB2	2.14	0.47
1:F:167:ALA:O	1:F:171:VAL:HG23	2.15	0.47
1:A:202:ILE:HG21	3:A:1302:THT:H192	1.97	0.47
1:E:55:PRO:O	1:E:56:ALA:CB	2.62	0.47
1:E:151:PRO:HB2	4:E:464:HOH:O	2.15	0.47
1:E:259:TYR:CD2	1:E:265:HIS:CE1	3.03	0.47
1:E:212:GLY:HA2	1:E:215:ILE:HG22	1.97	0.47

Continued on next page...

Continued from previous page...

Atom-1	Atom-2	Interatomic distance (Å)	Clash overlap (Å)
1:F:65:VAL:HG11	1:F:95:ILE:HD13	1.97	0.47
1:B:221:GLY:HA3	4:B:1408:HOH:O	2.14	0.47
1:E:128:ALA:HB2	1:E:171:VAL:HG13	1.97	0.47
1:D:228:ILE:HG23	4:E:453:HOH:O	2.14	0.47
1:E:151:PRO:HA	1:E:162:THR:HG23	1.96	0.47
1:E:259:TYR:CG	1:E:265:HIS:NE2	2.83	0.47
1:A:97:PHE:CZ	1:A:99:PRO:HG3	2.49	0.47
1:B:112:PRO:O	1:B:116:VAL:HG23	2.15	0.47
1:F:156:PRO:O	1:F:157:ALA:HB3	2.15	0.47
1:F:169:GLU:O	1:F:172:ASN:HB3	2.15	0.47
1:F:190:ALA:HB3	1:F:259:TYR:CD2	2.50	0.47
1:A:90:GLY:HA2	1:A:143:SER:O	2.15	0.47
1:C:103:MET:HE2	3:C:1306:THT:H202	1.96	0.46
1:E:206:ALA:O	1:E:207:LEU:HB2	2.15	0.46
1:D:5:LEU:HD23	1:D:32:GLN:HB2	1.97	0.46
1:C:195:ARG:HB2	4:C:1365:HOH:O	2.15	0.46
1:E:210:GLU:O	1:E:214:GLN:HB2	2.16	0.46
1:B:5:LEU:HD23	1:B:32:GLN:HB2	1.96	0.46
1:E:57:LYS:HD2	1:E:58:ALA:H	1.79	0.46
1:A:173:ARG:O	1:A:176:ALA:HB3	2.14	0.46
1:C:11:LEU:HD23	1:C:12:VAL:N	2.30	0.46
1:C:198:ALA:O	1:C:201:ALA:HB3	2.16	0.46
1:E:18:ASP:HA	1:E:23:PHE:CD2	2.50	0.46
1:F:5:LEU:HD23	1:F:32:GLN:HB2	1.97	0.46
1:C:62:GLU:O	1:C:77:ARG:NH1	2.48	0.46
1:E:157:ALA:HB2	1:E:214:GLN:CD	2.36	0.46
1:E:97:PHE:CE2	1:E:99:PRO:HD3	2.49	0.46
1:A:176:ALA:HB1	1:A:254:THR:CG2	2.46	0.46
1:F:23:PHE:HZ	1:F:53:ARG:HB2	1.81	0.46
1:F:173:ARG:O	1:F:176:ALA:HB3	2.15	0.46
1:A:4:LEU:HB3	1:A:5:LEU:HD22	1.97	0.46
1:D:173:ARG:O	1:D:176:ALA:HB3	2.16	0.46
1:E:6:ASP:N	1:E:32:GLN:O	2.49	0.46
1:E:67:ASN:C	1:E:67:ASN:ND2	2.69	0.46
1:E:68:GLU:O	1:E:72:ALA:HB2	2.16	0.46
1:E:171:VAL:HG23	1:F:163:VAL:CG1	2.45	0.46
1:A:45:ARG:CG	1:C:136:PRO:HB3	2.43	0.46
1:C:65:VAL:HG11	1:C:95:ILE:HD13	1.98	0.46
1:B:167:ALA:O	1:B:171:VAL:HG23	2.16	0.46
1:E:156:PRO:HB2	1:E:214:GLN:OE1	2.16	0.46
1:E:60:LEU:HD12	4:E:500:HOH:O	2.15	0.46

Continued on next page...

Continued from previous page...

Atom-1	Atom-2	Interatomic distance (Å)	Clash overlap (Å)
1:C:217:LEU:O	1:C:220:GLU:HB3	2.16	0.46
1:D:43:ARG:HB3	1:D:46:LEU:HB3	1.98	0.46
1:F:250:LEU:HB3	1:F:253:THR:HG22	1.97	0.46
1:A:250:LEU:HB3	1:A:253:THR:HG22	1.98	0.46
1:E:156:PRO:O	1:E:157:ALA:CB	2.64	0.45
1:C:90:GLY:HA2	1:C:143:SER:O	2.15	0.45
1:F:184:VAL:HG12	1:F:185:ARG:N	2.31	0.45
1:B:149:PHE:CE1	3:B:1304:THT:H111	2.52	0.45
1:E:175:VAL:O	1:E:179:ALA:HB3	2.16	0.45
1:E:231:ASN:HD22	1:E:233:LYS:H	1.64	0.45
1:B:4:LEU:HB3	1:B:5:LEU:HD22	1.98	0.45
1:B:51:THR:HG21	1:B:60:LEU:CD2	2.45	0.45
1:E:168:LEU:C	1:E:168:LEU:HD12	2.35	0.45
1:F:149:PHE:CE2	3:F:1310:THT:H111	2.51	0.45
1:E:100:GLN:HA	1:E:103:MET:CG	2.47	0.45
1:E:207:LEU:O	1:E:209:GLU:N	2.49	0.45
1:C:176:ALA:HB1	1:C:254:THR:HG22	1.98	0.45
1:E:221:GLY:O	1:E:223:ASP:N	2.49	0.45
1:C:5:LEU:HD22	1:C:5:LEU:N	2.30	0.45
1:D:156:PRO:O	1:D:157:ALA:HB3	2.16	0.45
1:B:198:ALA:HB3	4:B:1410:HOH:O	2.16	0.45
1:E:134:LEU:HA	1:E:137:ILE:HD11	1.99	0.45
1:B:268:LEU:C	1:B:269:LEU:HD22	2.37	0.45
1:E:67:ASN:ND2	1:E:69:GLU:H	2.15	0.45
1:D:249:TRP:HB3	1:E:244:ALA:HB2	1.99	0.45
1:F:217:LEU:O	1:F:220:GLU:HB3	2.15	0.45
1:F:188:LEU:O	1:F:257:ILE:HA	2.16	0.45
1:A:108:PHE:CD1	1:A:159:ASN:HB3	2.43	0.45
1:D:44:LEU:HA	1:D:44:LEU:HD22	1.81	0.45
1:F:176:ALA:HB1	1:F:254:THR:HG22	1.99	0.45
1:E:40:GLY:HA3	1:E:44:LEU:HD23	1.99	0.45
1:E:160:TRP:CZ3	1:F:171:VAL:HG22	2.51	0.45
1:C:153:ARG:HE	1:E:153:ARG:NH2	2.15	0.45
1:D:47:ILE:HG13	4:D:1379:HOH:O	2.17	0.45
1:B:153:ARG:HG3	4:B:1332:HOH:O	2.17	0.45
1:F:202:ILE:CG2	1:F:207:LEU:HD22	2.47	0.45
1:E:43:ARG:HB2	1:E:46:LEU:CD2	2.46	0.45
1:E:65:VAL:CA	1:E:71:LEU:HD21	2.47	0.45
1:A:217:LEU:O	1:A:220:GLU:HB3	2.17	0.45
1:D:153:ARG:HH11	1:D:153:ARG:HB3	1.82	0.45
1:F:198:ALA:O	1:F:201:ALA:HB3	2.17	0.44

Continued on next page...

Continued from previous page...

Atom-1	Atom-2	Interatomic distance (Å)	Clash overlap (Å)
1:A:5:LEU:HD23	1:A:32:GLN:HB2	1.98	0.44
1:F:226:ALA:HB2	1:F:264:ALA:HB2	1.98	0.44
1:B:217:LEU:HD12	1:B:218:LEU:N	2.32	0.44
1:B:11:LEU:HD23	1:B:12:VAL:N	2.31	0.44
1:E:128:ALA:CB	1:F:160:TRP:HH2	2.30	0.44
1:E:220:GLU:HA	4:E:501:HOH:O	2.16	0.44
1:E:21:ILE:O	1:E:24:HIS:HB2	2.18	0.44
1:E:265:HIS:CD2	4:E:447:HOH:O	2.70	0.44
1:C:154:ALA:HB3	1:E:267:GLN:OE1	2.16	0.44
1:F:145:VAL:HA	1:F:187:ASN:O	2.17	0.44
1:C:65:VAL:HG22	2:C:1305:NAD:N1A	2.32	0.44
1:C:221:GLY:HA3	4:C:1399:HOH:O	2.16	0.44
1:D:5:LEU:CB	1:D:34:ALA:HB2	2.45	0.44
1:B:187:ASN:HD21	1:B:253:THR:HG23	1.82	0.44
1:C:202:ILE:CG2	1:C:207:LEU:HD22	2.47	0.44
1:E:144:ILE:N	1:E:185:ARG:O	2.47	0.44
1:C:5:LEU:CB	1:C:34:ALA:HB2	2.43	0.44
1:F:247:SER:HB2	4:F:1320:HOH:O	2.16	0.44
1:F:47:ILE:HG13	4:F:1383:HOH:O	2.17	0.44
1:E:165:LYS:HA	1:E:165:LYS:HD3	1.72	0.44
1:E:226:ALA:HB1	1:E:262:GLY:O	2.18	0.44
1:D:23:PHE:HZ	1:D:53:ARG:HB2	1.82	0.44
1:E:253:THR:OG1	1:E:256:ASP:HB2	2.18	0.44
1:E:95:ILE:HG12	2:E:1308:NAD:C2A	2.47	0.44
1:C:169:GLU:O	1:C:172:ASN:HB3	2.18	0.44
1:B:62:GLU:O	1:B:77:ARG:NH1	2.49	0.44
1:A:198:ALA:HB2	3:A:1302:THT:C1	2.13	0.44
1:E:23:PHE:CE1	1:E:27:ARG:HD3	2.53	0.44
1:E:269:LEU:HD22	1:E:269:LEU:N	2.33	0.44
1:E:97:PHE:HB2	2:E:1308:NAD:C8A	2.45	0.44
1:C:257:ILE:C	1:C:258:ILE:HD12	2.38	0.44
1:C:184:VAL:HG12	1:C:185:ARG:N	2.33	0.44
1:D:21:ILE:HD11	1:D:194:ILE:HG13	1.99	0.44
1:B:101:THR:HG21	1:B:115:ASP:CG	2.37	0.44
1:A:65:VAL:HG11	1:A:95:ILE:HD13	2.00	0.44
1:E:174:PHE:O	1:E:177:ARG:HG3	2.18	0.44
1:F:5:LEU:CB	1:F:34:ALA:HB2	2.45	0.44
1:F:187:ASN:HD21	1:F:253:THR:HG23	1.82	0.44
1:E:98:MET:SD	1:E:161:MET:CB	3.02	0.43
1:B:5:LEU:HD22	1:B:5:LEU:N	2.33	0.43
1:B:173:ARG:O	1:B:176:ALA:HB3	2.17	0.43

Continued on next page...

Continued from previous page...

Atom-1	Atom-2	Interatomic distance (Å)	Clash overlap (Å)
1:A:190:ALA:HB3	1:A:259:TYR:CD2	2.52	0.43
1:F:221:GLY:HA3	4:F:1411:HOH:O	2.18	0.43
1:E:245:LEU:HD12	1:E:245:LEU:HA	1.78	0.43
1:E:44:LEU:HA	1:E:47:ILE:CG2	2.45	0.43
1:E:80:GLU:HB3	4:E:538:HOH:O	2.18	0.43
1:D:230:TRP:CZ3	1:D:261:ASP:HA	2.53	0.43
1:F:41:PHE:HB3	4:F:1392:HOH:O	2.17	0.43
1:F:268:LEU:C	1:F:269:LEU:HD22	2.38	0.43
1:E:20:SER:HA	1:E:196:THR:CG2	2.44	0.43
1:D:74:LEU:HD22	1:D:134:LEU:HD21	2.00	0.43
1:D:191:ALA:HB3	2:D:1307:NAD:H5N	1.99	0.43
1:A:23:PHE:HZ	1:A:53:ARG:HB2	1.82	0.43
1:F:129:SER:O	1:F:132:LYS:HB3	2.19	0.43
1:C:23:PHE:HZ	1:C:53:ARG:HB2	1.83	0.43
1:B:190:ALA:HB3	1:B:259:TYR:CD2	2.53	0.43
1:F:90:GLY:HA2	1:F:143:SER:O	2.19	0.43
1:E:51:THR:HA	1:E:54:LEU:HD23	1.99	0.43
1:E:43:ARG:HB2	1:E:46:LEU:HD23	2.00	0.43
1:D:211:ALA:O	1:D:214:GLN:HB2	2.19	0.43
1:E:263:GLY:O	1:E:267:GLN:HG2	2.19	0.43
1:D:168:LEU:HD13	1:D:188:LEU:HD21	2.00	0.43
1:D:231:ASN:OD1	1:D:233:LYS:HG2	2.17	0.43
1:B:49:ARG:O	1:B:52:ASP:HB2	2.18	0.43
1:E:129:SER:C	1:E:131:ALA:N	2.70	0.43
1:E:203:VAL:CG1	4:E:543:HOH:O	2.67	0.43
1:E:20:SER:CB	4:E:432:HOH:O	2.65	0.43
1:E:13:SER:OG	1:E:93:HIS:HA	2.18	0.43
1:E:113:TYR:O	1:E:114:ALA:C	2.57	0.43
1:A:167:ALA:O	1:A:171:VAL:HG23	2.19	0.43
1:C:51:THR:HG21	1:C:60:LEU:CD2	2.48	0.43
1:B:226:ALA:HA	1:B:227:PRO:HD3	1.84	0.43
1:D:210:GLU:C	1:D:212:GLY:H	2.22	0.43
1:D:202:ILE:O	1:D:215:ILE:HD13	2.18	0.43
1:F:54:LEU:O	1:F:56:ALA:N	2.52	0.43
1:C:93:HIS:HD2	1:C:130:MET:SD	2.42	0.43
1:C:93:HIS:CD2	1:C:95:ILE:HD12	2.54	0.43
1:F:196:THR:HB	4:F:1413:HOH:O	2.18	0.43
1:E:48:GLN:O	1:E:51:THR:N	2.51	0.43
1:E:82:ILE:HG13	1:E:83:GLY:H	1.83	0.43
1:C:16:ILE:O	1:C:47:ILE:HG22	2.19	0.43
1:E:228:ILE:C	1:E:228:ILE:HD12	2.38	0.43

Continued on next page...

Continued from previous page...

Atom-1	Atom-2	Interatomic distance (Å)	Clash overlap (Å)
1:A:54:LEU:O	1:A:56:ALA:N	2.52	0.43
1:F:62:GLU:O	1:F:77:ARG:NH1	2.51	0.43
1:C:155:MET:HB2	1:E:269:LEU:CD2	2.45	0.43
1:E:147:MET:CE	1:E:191:ALA:HB3	2.49	0.43
1:E:101:THR:CA	1:E:106:ASN:HB3	2.41	0.43
1:B:44:LEU:HD22	1:B:44:LEU:HA	1.87	0.43
1:E:82:ILE:HD11	4:E:536:HOH:O	2.19	0.43
1:D:250:LEU:HB3	1:D:253:THR:HG22	2.01	0.43
1:E:121:HIS:HD2	4:E:504:HOH:O	1.99	0.43
1:E:164:ALA:O	1:E:167:ALA:HB3	2.19	0.43
1:B:65:VAL:HG11	1:B:95:ILE:HD13	2.01	0.43
1:F:11:LEU:HD23	1:F:12:VAL:N	2.33	0.43
1:E:67:ASN:HB3	1:E:70:HIS:HB2	2.00	0.42
1:D:219:GLU:HB3	1:D:232:MET:SD	2.58	0.42
1:D:253:THR:HB	1:E:259:TYR:O	2.19	0.42
1:D:74:LEU:HD13	1:D:134:LEU:CG	2.49	0.42
1:F:118:LYS:HE2	1:F:118:LYS:HB3	1.80	0.42
1:F:250:LEU:N	1:F:251:PRO:CD	2.82	0.42
1:E:220:GLU:OE1	1:E:221:GLY:N	2.53	0.42
1:E:15:ILE:HB	1:E:47:ILE:HD12	2.02	0.42
1:E:149:PHE:CD1	1:E:149:PHE:C	2.92	0.42
1:C:221:GLY:CA	4:C:1399:HOH:O	2.67	0.42
1:D:90:GLY:HA2	1:D:143:SER:O	2.19	0.42
1:B:185:ARG:NH2	4:B:1402:HOH:O	2.51	0.42
1:B:21:ILE:HD11	1:B:194:ILE:HG13	2.01	0.42
1:D:167:ALA:O	1:D:171:VAL:HG23	2.19	0.42
1:E:63:LEU:CG	1:E:64:ASP:N	2.82	0.42
1:A:51:THR:HG21	1:A:60:LEU:CD2	2.48	0.42
1:F:74:LEU:HD22	1:F:134:LEU:HD21	2.01	0.42
1:D:118:LYS:HE2	1:D:118:LYS:HB3	1.74	0.42
1:B:258:ILE:HG22	1:B:258:ILE:O	2.19	0.42
1:F:172:ASN:HB2	1:F:188:LEU:HD22	2.02	0.42
1:E:211:ALA:O	1:E:214:GLN:HB3	2.20	0.42
1:F:254:THR:HG21	4:F:1336:HOH:O	2.19	0.42
1:E:65:VAL:CG2	1:E:95:ILE:HD13	2.49	0.42
1:F:51:THR:HG21	1:F:60:LEU:CD2	2.50	0.42
1:A:44:LEU:HD22	1:A:44:LEU:HA	1.86	0.42
1:E:113:TYR:OH	1:F:120:ILE:CG2	2.66	0.42
1:B:176:ALA:HB1	1:B:254:THR:HG22	2.01	0.42
1:D:121:HIS:HE1	4:D:1389:HOH:O	2.02	0.42
1:B:169:GLU:O	1:B:172:ASN:HB3	2.19	0.42

Continued on next page...

Continued from previous page...

Atom-1	Atom-2	Interatomic distance (Å)	Clash overlap (Å)
1:F:49:ARG:O	1:F:52:ASP:HB2	2.20	0.42
1:A:158:TYR:O	1:A:159:ASN:C	2.58	0.42
1:C:153:ARG:HG3	4:C:1326:HOH:O	2.20	0.42
1:F:44:LEU:HA	1:F:44:LEU:HD22	1.87	0.42
1:A:151:PRO:O	1:B:173:ARG:NH1	2.53	0.42
1:C:190:ALA:HB3	1:C:259:TYR:CD2	2.55	0.42
1:A:257:ILE:C	1:A:258:ILE:HD12	2.40	0.42
1:B:158:TYR:HB3	1:B:162:THR:OG1	2.19	0.42
1:E:215:ILE:HG23	1:E:216:GLN:N	2.35	0.42
1:E:66:GLN:HB3	4:E:488:HOH:O	2.18	0.42
1:E:120:ILE:HA	1:E:123:SER:HB2	2.01	0.42
1:B:23:PHE:HZ	1:B:53:ARG:HB2	1.84	0.42
1:C:212:GLY:O	1:C:216:GLN:HB2	2.20	0.42
1:E:67:ASN:OD1	1:E:70:HIS:CG	2.73	0.42
1:A:203:VAL:HG13	1:A:216:GLN:HE22	1.85	0.42
1:C:250:LEU:N	1:C:251:PRO:CD	2.83	0.42
1:B:145:VAL:HA	1:B:187:ASN:O	2.19	0.42
1:A:184:VAL:HG12	1:A:185:ARG:N	2.35	0.41
1:B:24:HIS:O	1:B:28:VAL:HG23	2.20	0.41
1:D:265:HIS:O	1:F:153:ARG:NH1	2.53	0.41
1:C:202:ILE:HG13	1:C:202:ILE:H	1.68	0.41
1:E:128:ALA:HB3	1:F:160:TRP:HH2	1.84	0.41
1:E:15:ILE:HG12	1:E:22:ALA:HB3	2.01	0.41
1:C:155:MET:HB3	1:E:268:LEU:HD23	2.03	0.41
1:C:230:TRP:CZ3	1:C:261:ASP:HA	2.56	0.41
1:F:153:ARG:HG3	4:F:1337:HOH:O	2.19	0.41
1:A:226:ALA:HB2	1:A:264:ALA:HB2	2.01	0.41
1:D:153:ARG:NH1	1:F:265:HIS:O	2.53	0.41
1:F:21:ILE:O	1:F:25:ILE:HG13	2.20	0.41
1:C:207:LEU:HB3	1:C:211:ALA:HB3	2.01	0.41
1:D:250:LEU:N	1:D:251:PRO:CD	2.83	0.41
1:B:221:GLY:CA	4:B:1408:HOH:O	2.68	0.41
1:B:184:VAL:HG12	1:B:185:ARG:N	2.36	0.41
1:E:8:LYS:HA	4:E:486:HOH:O	2.19	0.41
4:A:1390:HOH:O	1:C:181:LYS:CB	2.64	0.41
1:D:268:LEU:HD12	1:D:268:LEU:HA	1.84	0.41
1:C:118:LYS:HE2	1:C:118:LYS:HB3	1.78	0.41
1:A:11:LEU:HD23	1:A:12:VAL:N	2.34	0.41
1:E:177:ARG:C	1:E:179:ALA:H	2.24	0.41
1:E:257:ILE:HD11	4:E:434:HOH:O	2.20	0.41
1:E:71:LEU:HG	4:E:511:HOH:O	2.20	0.41

Continued on next page...

Continued from previous page...

Atom-1	Atom-2	Interatomic distance (Å)	Clash overlap (Å)
1:B:257:ILE:C	1:B:258:ILE:HD12	2.41	0.41
1:E:253:THR:HA	4:E:351:HOH:O	2.21	0.41
1:E:95:ILE:HG12	2:E:1308:NAD:N3A	2.36	0.41
1:E:149:PHE:HD1	1:E:149:PHE:C	2.24	0.41
1:A:217:LEU:HD12	1:A:217:LEU:C	2.40	0.41
1:F:165:LYS:O	1:F:168:LEU:HB3	2.21	0.41
1:A:78:VAL:O	1:A:81:ALA:HB3	2.21	0.41
1:B:258:ILE:N	1:B:258:ILE:HD12	2.35	0.41
1:B:230:TRP:CZ3	1:B:261:ASP:HA	2.55	0.41
1:E:230:TRP:CE3	4:E:446:HOH:O	2.58	0.41
1:E:121:HIS:O	1:E:126:SER:HB2	2.21	0.41
1:E:69:GLU:HG3	4:E:544:HOH:O	2.20	0.41
1:E:98:MET:HA	1:E:99:PRO:HD2	1.80	0.41
1:A:226:ALA:HA	1:A:227:PRO:HD3	1.85	0.41
1:F:5:LEU:N	1:F:5:LEU:HD22	2.35	0.41
1:E:74:LEU:CD2	1:E:74:LEU:O	2.67	0.41
1:C:54:LEU:O	1:C:56:ALA:N	2.53	0.41
1:B:24:HIS:ND1	1:B:27:ARG:NH2	2.69	0.41
1:A:191:ALA:HB3	2:A:1301:NAD:H5N	2.03	0.41
1:A:145:VAL:HA	1:A:187:ASN:O	2.20	0.41
1:A:2:THR:HA	1:A:6:ASP:OD2	2.21	0.41
1:A:202:ILE:HG13	1:A:202:ILE:H	1.68	0.41
1:B:207:LEU:HB3	1:B:211:ALA:HB3	2.03	0.41
1:E:148:ASP:HB2	1:E:188:LEU:HD23	2.02	0.41
1:E:20:SER:HB2	2:E:1308:NAD:O2N	2.21	0.41
1:D:158:TYR:CE2	1:D:161:MET:HG3	2.55	0.41
1:D:54:LEU:O	1:D:56:ALA:N	2.54	0.41
1:A:153:ARG:CD	4:A:1409:HOH:O	2.68	0.41
1:E:164:ALA:O	1:E:168:LEU:N	2.54	0.40
1:D:184:VAL:CG1	1:D:185:ARG:N	2.85	0.40
1:D:226:ALA:HA	1:D:227:PRO:HD3	1.89	0.40
1:E:45:ARG:HB2	4:E:520:HOH:O	2.21	0.40
1:E:147:MET:HB3	4:E:440:HOH:O	2.22	0.40
1:A:230:TRP:CZ3	1:A:261:ASP:HA	2.56	0.40
1:F:268:LEU:HD12	1:F:268:LEU:HA	1.78	0.40
1:A:169:GLU:O	1:A:172:ASN:HB3	2.20	0.40
1:C:21:ILE:HD11	1:C:194:ILE:HG13	2.03	0.40
1:E:189:VAL:HG21	1:E:242:VAL:HG13	2.03	0.40
1:E:21:ILE:HD11	1:E:194:ILE:CD1	2.51	0.40
1:E:10:ILE:HG23	1:E:90:GLY:CA	2.46	0.40
1:E:149:PHE:CD2	1:E:158:TYR:CZ	3.10	0.40

Continued on next page...

Continued from previous page...

Atom-1	Atom-2	Interatomic distance (Å)	Clash overlap (Å)
1:A:24:HIS:ND1	1:A:27:ARG:NH2	2.70	0.40
1:B:268:LEU:HD12	1:B:268:LEU:HA	1.80	0.40
1:E:173:ARG:NH2	4:E:437:HOH:O	2.54	0.40
1:D:100:GLN:HE22	1:D:207:LEU:HD11	1.86	0.40
1:E:26:ALA:O	1:E:30:GLN:CB	2.69	0.40
1:E:23:PHE:CE2	1:E:54:LEU:HD22	2.56	0.40
1:A:5:LEU:HD22	1:A:5:LEU:N	2.36	0.40
1:E:64:ASP:C	1:E:66:GLN:H	2.25	0.40
1:A:99:PRO:O	1:A:101:THR:N	2.54	0.40
1:C:173:ARG:HB3	1:D:154:ALA:HB2	2.03	0.40
1:F:230:TRP:CZ3	1:F:261:ASP:HA	2.56	0.40
1:F:142:GLY:O	1:F:184:VAL:HA	2.21	0.40
1:F:93:HIS:HD2	1:F:130:MET:SD	2.45	0.40

There are no symmetry-related clashes.

5.3 Torsion angles [i](#)

5.3.1 Protein backbone [i](#)

In the following table, the Percentiles column shows the percent Ramachandran outliers of the chain as a percentile score with respect to all X-ray entries followed by that with respect to entries of similar resolution.

The Analysed column shows the number of residues for which the backbone conformation was analysed, and the total number of residues.

Mol	Chain	Analysed	Favoured	Allowed	Outliers	Percentiles	
1	A	266/268 (99%)	238 (90%)	22 (8%)	6 (2%)	8	26
1	B	266/268 (99%)	238 (90%)	21 (8%)	7 (3%)	7	22
1	C	266/268 (99%)	241 (91%)	18 (7%)	7 (3%)	7	22
1	D	266/268 (99%)	231 (87%)	27 (10%)	8 (3%)	5	18
1	E	266/268 (99%)	190 (71%)	46 (17%)	30 (11%)	0	1
1	F	266/268 (99%)	239 (90%)	21 (8%)	6 (2%)	8	26
All	All	1596/1608 (99%)	1377 (86%)	155 (10%)	64 (4%)	4	12

All (64) Ramachandran outliers are listed below:

Mol	Chain	Res	Type
1	B	209	GLU
1	D	103	MET
1	D	197	LEU
1	E	21	ILE
1	E	56	ALA
1	E	64	ASP
1	E	65	VAL
1	E	100	GLN
1	E	124	ALA
1	E	142	GLY
1	E	203	VAL
1	E	207	LEU
1	E	208	GLY
1	E	210	GLU
1	E	222	TRP
1	A	41	PHE
1	A	209	GLU
1	C	41	PHE
1	C	100	GLN
1	C	209	GLU
1	E	23	PHE
1	E	48	GLN
1	E	114	ALA
1	E	123	SER
1	E	193	PRO
1	E	221	GLY
1	F	209	GLU
1	A	100	GLN
1	A	159	ASN
1	B	41	PHE
1	B	100	GLN
1	B	159	ASN
1	C	159	ASN
1	D	41	PHE
1	D	100	GLN
1	D	108	PHE
1	E	103	MET
1	E	157	ALA
1	F	41	PHE
1	F	100	GLN
1	A	150	ASP
1	B	150	ASP
1	B	210	GLU

Continued on next page...

Continued from previous page...

Mol	Chain	Res	Type
1	C	150	ASP
1	D	150	ASP
1	E	84	ALA
1	F	150	ASP
1	F	159	ASN
1	C	74	LEU
1	D	55	PRO
1	E	112	PRO
1	E	125	TYR
1	E	159	ASN
1	E	202	ILE
1	E	209	GLU
1	F	55	PRO
1	A	55	PRO
1	B	55	PRO
1	C	55	PRO
1	E	247	SER
1	E	150	ASP
1	D	203	VAL
1	E	205	GLY
1	E	105	ILE

5.3.2 Protein sidechains ⓘ

In the following table, the Percentiles column shows the percent sidechain outliers of the chain as a percentile score with respect to all X-ray entries followed by that with respect to entries of similar resolution.

The Analysed column shows the number of residues for which the sidechain conformation was analysed, and the total number of residues.

Mol	Chain	Analysed	Rotameric	Outliers	Percentiles	
1	A	203/204 (100%)	182 (90%)	21 (10%)	9	26
1	B	203/204 (100%)	182 (90%)	21 (10%)	9	26
1	C	203/204 (100%)	181 (89%)	22 (11%)	8	23
1	D	203/204 (100%)	179 (88%)	24 (12%)	6	19
1	E	203/204 (100%)	148 (73%)	55 (27%)	0	1
1	F	203/204 (100%)	182 (90%)	21 (10%)	9	26
All	All	1218/1224 (100%)	1054 (86%)	164 (14%)	5	14

All (164) residues with a non-rotameric sidechain are listed below:

Mol	Chain	Res	Type
1	A	12	VAL
1	A	44	LEU
1	A	47	ILE
1	A	60	LEU
1	A	71	LEU
1	A	74	LEU
1	A	105	ILE
1	A	129	SER
1	A	152	SER
1	A	153	ARG
1	A	158	TYR
1	A	168	LEU
1	A	177	ARG
1	A	188	LEU
1	A	196	THR
1	A	210	GLU
1	A	214	GLN
1	A	224	GLN
1	A	225	ARG
1	A	233	LYS
1	A	256	ASP
1	B	12	VAL
1	B	44	LEU
1	B	47	ILE
1	B	60	LEU
1	B	71	LEU
1	B	74	LEU
1	B	105	ILE
1	B	129	SER
1	B	152	SER
1	B	153	ARG
1	B	158	TYR
1	B	168	LEU
1	B	177	ARG
1	B	188	LEU
1	B	196	THR
1	B	210	GLU
1	B	214	GLN
1	B	224	GLN
1	B	225	ARG
1	B	233	LYS
1	B	256	ASP

Continued on next page...

Continued from previous page...

Mol	Chain	Res	Type
1	C	4	LEU
1	C	12	VAL
1	C	44	LEU
1	C	47	ILE
1	C	60	LEU
1	C	71	LEU
1	C	74	LEU
1	C	105	ILE
1	C	129	SER
1	C	152	SER
1	C	153	ARG
1	C	158	TYR
1	C	168	LEU
1	C	177	ARG
1	C	188	LEU
1	C	196	THR
1	C	210	GLU
1	C	214	GLN
1	C	224	GLN
1	C	225	ARG
1	C	233	LYS
1	C	256	ASP
1	D	12	VAL
1	D	44	LEU
1	D	47	ILE
1	D	60	LEU
1	D	71	LEU
1	D	74	LEU
1	D	106	ASN
1	D	107	PRO
1	D	129	SER
1	D	152	SER
1	D	153	ARG
1	D	158	TYR
1	D	168	LEU
1	D	177	ARG
1	D	188	LEU
1	D	199	MET
1	D	203	VAL
1	D	209	GLU
1	D	217	LEU
1	D	218	LEU

Continued on next page...

Continued from previous page...

Mol	Chain	Res	Type
1	D	224	GLN
1	D	225	ARG
1	D	233	LYS
1	D	256	ASP
1	E	5	LEU
1	E	6	ASP
1	E	16	ILE
1	E	18	ASP
1	E	35	GLN
1	E	36	LEU
1	E	42	ASP
1	E	43	ARG
1	E	45	ARG
1	E	47	ILE
1	E	48	GLN
1	E	50	ILE
1	E	52	ASP
1	E	60	LEU
1	E	67	ASN
1	E	68	GLU
1	E	70	HIS
1	E	71	LEU
1	E	73	SER
1	E	74	LEU
1	E	77	ARG
1	E	80	GLU
1	E	88	LEU
1	E	92	VAL
1	E	95	ILE
1	E	100	GLN
1	E	103	MET
1	E	105	ILE
1	E	112	PRO
1	E	117	SER
1	E	121	HIS
1	E	139	ASN
1	E	140	PRO
1	E	145	VAL
1	E	149	PHE
1	E	158	TYR
1	E	161	MET
1	E	168	LEU

Continued on next page...

Continued from previous page...

Mol	Chain	Res	Type
1	E	170	SER
1	E	172	ASN
1	E	188	LEU
1	E	196	THR
1	E	207	LEU
1	E	216	GLN
1	E	217	LEU
1	E	218	LEU
1	E	220	GLU
1	E	231	ASN
1	E	232	MET
1	E	234	ASP
1	E	248	ASP
1	E	254	THR
1	E	256	ASP
1	E	266	THR
1	E	269	LEU
1	F	12	VAL
1	F	44	LEU
1	F	47	ILE
1	F	60	LEU
1	F	71	LEU
1	F	74	LEU
1	F	105	ILE
1	F	129	SER
1	F	152	SER
1	F	153	ARG
1	F	158	TYR
1	F	168	LEU
1	F	177	ARG
1	F	188	LEU
1	F	196	THR
1	F	210	GLU
1	F	214	GLN
1	F	224	GLN
1	F	225	ARG
1	F	233	LYS
1	F	256	ASP

Some sidechains can be flipped to improve hydrogen bonding and reduce clashes. All (19) such sidechains are listed below:

Mol	Chain	Res	Type
1	A	70	HIS
1	A	214	GLN
1	B	70	HIS
1	B	214	GLN
1	C	70	HIS
1	C	121	HIS
1	C	214	GLN
1	D	70	HIS
1	D	100	GLN
1	D	106	ASN
1	D	216	GLN
1	E	67	ASN
1	E	70	HIS
1	E	86	ASN
1	E	100	GLN
1	E	121	HIS
1	E	231	ASN
1	F	70	HIS
1	F	214	GLN

5.3.3 RNA [i](#)

There are no RNA molecules in this entry.

5.4 Non-standard residues in protein, DNA, RNA chains [i](#)

There are no non-standard protein/DNA/RNA residues in this entry.

5.5 Carbohydrates [i](#)

There are no carbohydrates in this entry.

5.6 Ligand geometry [i](#)

10 ligands are modelled in this entry.

In the following table, the Counts columns list the number of bonds (or angles) for which Mogul statistics could be retrieved, the number of bonds (or angles) that are observed in the model and the number of bonds (or angles) that are defined in the chemical component dictionary. The Link column lists molecule types, if any, to which the group is linked. The Z score for a bond length (or angle) is the number of standard deviations the observed value is removed from the expected

value. A bond length (or angle) with $|Z| > 2$ is considered an outlier worth inspection. RMSZ is the root-mean-square of all Z scores of the bond lengths (or angles).

Mol	Type	Chain	Res	Link	Bond lengths			Bond angles		
					Counts	RMSZ	$\# Z > 2$	Counts	RMSZ	$\# Z > 2$
2	NAD	A	1301	-	38,48,48	1.03	2 (5%)	47,73,73	2.33	7 (14%)
3	THT	A	1302	-	23,23,23	1.16	2 (8%)	24,24,24	2.42	5 (20%)
2	NAD	B	1303	-	38,48,48	1.07	1 (2%)	47,73,73	2.37	8 (17%)
3	THT	B	1304	-	23,23,23	1.39	4 (17%)	24,24,24	2.56	5 (20%)
2	NAD	C	1305	-	38,48,48	1.20	3 (7%)	47,73,73	2.33	9 (19%)
3	THT	C	1306	-	23,23,23	1.52	4 (17%)	24,24,24	2.58	5 (20%)
2	NAD	D	1307	-	38,48,48	1.23	4 (10%)	47,73,73	2.52	10 (21%)
2	NAD	E	1308	4	38,48,48	1.01	3 (7%)	47,73,73	4.01	15 (31%)
2	NAD	F	1309	-	38,48,48	1.09	2 (5%)	47,73,73	2.23	7 (14%)
3	THT	F	1310	-	23,23,23	1.19	4 (17%)	24,24,24	2.26	5 (20%)

In the following table, the Chirals column lists the number of chiral outliers, the number of chiral centers analysed, the number of these observed in the model and the number defined in the chemical component dictionary. Similar counts are reported in the Torsion and Rings columns. '-' means no outliers of that kind were identified.

Mol	Type	Chain	Res	Link	Chirals	Torsions	Rings
2	NAD	A	1301	-	-	0/22/62/62	0/5/5/5
3	THT	A	1302	-	-	0/22/22/22	0/0/0/0
2	NAD	B	1303	-	-	0/22/62/62	0/5/5/5
3	THT	B	1304	-	-	0/22/22/22	0/0/0/0
2	NAD	C	1305	-	-	0/22/62/62	0/5/5/5
3	THT	C	1306	-	-	0/22/22/22	0/0/0/0
2	NAD	D	1307	-	-	0/22/62/62	0/5/5/5
2	NAD	E	1308	4	-	0/22/62/62	0/5/5/5
2	NAD	F	1309	-	-	0/22/62/62	0/5/5/5
3	THT	F	1310	-	-	0/22/22/22	0/0/0/0

All (29) bond length outliers are listed below:

Mol	Chain	Res	Type	Atoms	Z	Observed(Å)	Ideal(Å)
3	B	1304	THT	C9-C8	-3.69	1.38	1.52
3	A	1302	THT	C9-C8	-3.62	1.38	1.52
3	C	1306	THT	C9-C8	-3.38	1.39	1.52
3	F	1310	THT	C9-C8	-3.33	1.39	1.52
2	E	1308	NAD	C5A-N7A	-2.26	1.31	1.39
2	C	1305	NAD	C3N-C7N	2.02	1.53	1.50

Continued on next page...

Continued from previous page...

Mol	Chain	Res	Type	Atoms	Z	Observed(Å)	Ideal(Å)
3	F	1310	THT	C1-C2	2.05	1.54	1.50
3	B	1304	THT	O7-C7	2.05	1.24	1.21
2	C	1305	NAD	C6N-N1N	2.09	1.41	1.35
3	F	1310	THT	C8-C7	2.18	1.53	1.50
2	A	1301	NAD	C6N-N1N	2.21	1.41	1.35
2	F	1309	NAD	C6N-N1N	2.21	1.41	1.35
3	F	1310	THT	C7-S6	2.31	1.81	1.76
2	D	1307	NAD	C6N-N1N	2.39	1.41	1.35
2	E	1308	NAD	C6N-N1N	2.53	1.42	1.35
3	B	1304	THT	C8-C7	2.64	1.53	1.50
2	E	1308	NAD	C3N-C7N	2.66	1.54	1.50
2	D	1307	NAD	C3N-C7N	2.73	1.54	1.50
2	D	1307	NAD	O4B-C1B	2.77	1.44	1.41
3	A	1302	THT	C7-S6	2.92	1.82	1.76
3	C	1306	THT	O7-C7	2.92	1.25	1.21
2	A	1301	NAD	O4D-C1D	2.98	1.45	1.41
3	C	1306	THT	C8-C7	3.29	1.54	1.50
3	B	1304	THT	C7-S6	3.74	1.84	1.76
2	F	1309	NAD	O4D-C1D	3.80	1.46	1.41
3	C	1306	THT	C7-S6	3.90	1.84	1.76
2	D	1307	NAD	O4D-C1D	4.14	1.46	1.41
2	B	1303	NAD	O4D-C1D	4.43	1.46	1.41
2	C	1305	NAD	O4D-C1D	4.99	1.47	1.41

All (76) bond angle outliers are listed below:

Mol	Chain	Res	Type	Atoms	Z	Observed(°)	Ideal(°)
2	E	1308	NAD	C4B-O4B-C1B	-19.91	87.84	109.72
2	D	1307	NAD	N3A-C2A-N1A	-10.86	120.58	128.89
2	B	1303	NAD	N3A-C2A-N1A	-10.21	121.08	128.89
2	C	1305	NAD	N3A-C2A-N1A	-10.02	121.22	128.89
2	E	1308	NAD	N3A-C2A-N1A	-9.62	121.53	128.89
2	A	1301	NAD	N3A-C2A-N1A	-9.50	121.62	128.89
2	F	1309	NAD	N3A-C2A-N1A	-8.89	122.09	128.89
2	A	1301	NAD	C4B-O4B-C1B	-7.37	101.62	109.72
2	D	1307	NAD	C4B-O4B-C1B	-7.02	102.00	109.72
2	C	1305	NAD	C4B-O4B-C1B	-6.81	102.23	109.72
2	E	1308	NAD	C1B-N9A-C4A	-6.28	117.47	126.94
3	C	1306	THT	O7-C7-C8	-6.20	119.67	123.94
2	F	1309	NAD	C4B-O4B-C1B	-6.08	103.03	109.72
3	B	1304	THT	O7-C7-C8	-5.89	119.88	123.94
3	A	1302	THT	O7-C7-C8	-5.78	119.96	123.94

Continued on next page...

Continued from previous page...

Mol	Chain	Res	Type	Atoms	Z	Observed(°)	Ideal(°)
2	B	1303	NAD	C4B-O4B-C1B	-5.26	103.94	109.72
2	E	1308	NAD	O5D-PN-O1N	-4.93	90.47	109.62
3	F	1310	THT	O7-C7-C8	-4.29	120.99	123.94
3	B	1304	THT	O7-C7-S6	-3.76	119.85	122.83
3	F	1310	THT	O7-C7-S6	-3.27	120.23	122.83
2	E	1308	NAD	O3B-C3B-C2B	-3.25	101.26	111.83
3	C	1306	THT	O7-C7-S6	-3.23	120.27	122.83
3	A	1302	THT	O7-C7-S6	-3.04	120.42	122.83
2	B	1303	NAD	O4B-C4B-C3B	-3.00	99.09	105.15
2	E	1308	NAD	O3-PA-O5B	-2.50	96.31	102.94
2	E	1308	NAD	C5N-C6N-N1N	-2.36	116.39	120.47
2	C	1305	NAD	C1B-N9A-C4A	-2.26	123.54	126.94
2	C	1305	NAD	O4B-C4B-C3B	-2.03	101.05	105.15
2	D	1307	NAD	O4B-C4B-C3B	-2.01	101.10	105.15
2	E	1308	NAD	O4B-C4B-C5B	2.01	116.52	109.32
2	E	1308	NAD	C5B-C4B-C3B	2.09	123.52	115.21
2	D	1307	NAD	C2A-N1A-C6A	2.26	122.80	118.77
2	D	1307	NAD	O5B-C5B-C4B	2.34	117.73	109.12
2	A	1301	NAD	PN-O3-PA	2.41	139.49	132.73
3	F	1310	THT	C5-S6-C7	2.41	110.69	102.09
2	C	1305	NAD	O4D-C1D-N1N	2.42	110.79	108.13
3	C	1306	THT	C5-S6-C7	2.43	110.77	102.09
2	F	1309	NAD	O5B-C5B-C4B	2.44	118.11	109.12
2	D	1307	NAD	PN-O3-PA	2.49	139.73	132.73
3	B	1304	THT	C5-S6-C7	2.52	111.08	102.09
2	E	1308	NAD	O2A-PA-O3	2.53	116.58	105.09
2	D	1307	NAD	N6A-C6A-N1A	2.54	124.66	119.20
2	B	1303	NAD	O5B-C5B-C4B	2.57	118.58	109.12
2	B	1303	NAD	PN-O3-PA	2.63	140.13	132.73
2	C	1305	NAD	O5B-C5B-C4B	2.70	119.09	109.12
3	A	1302	THT	C5-S6-C7	2.76	111.94	102.09
2	E	1308	NAD	C4A-C5A-N7A	2.78	112.04	109.48
2	F	1309	NAD	PN-O3-PA	2.79	140.55	132.73
2	F	1309	NAD	O4D-C1D-N1N	2.92	111.34	108.13
2	E	1308	NAD	C2A-N1A-C6A	2.93	124.00	118.77
2	B	1303	NAD	C4A-C5A-N7A	2.98	112.22	109.48
2	A	1301	NAD	O5B-C5B-C4B	3.07	120.43	109.12
2	E	1308	NAD	O3B-C3B-C4B	3.17	120.56	111.05
2	C	1305	NAD	PN-O3-PA	3.17	141.64	132.73
2	C	1305	NAD	C4A-C5A-N7A	3.19	112.42	109.48
2	A	1301	NAD	C4A-C5A-N7A	3.32	112.53	109.48
2	A	1301	NAD	O4D-C1D-N1N	3.55	112.03	108.13

Continued on next page...

Continued from previous page...

Mol	Chain	Res	Type	Atoms	Z	Observed(°)	Ideal(°)
2	F	1309	NAD	C4A-C5A-N7A	3.56	112.76	109.48
2	D	1307	NAD	C4A-C5A-N7A	4.19	113.33	109.48
2	B	1303	NAD	O4D-C1D-N1N	4.28	112.83	108.13
2	D	1307	NAD	O4D-C1D-N1N	4.72	113.32	108.13
3	A	1302	THT	C9-C8-C7	4.94	120.41	113.12
3	B	1304	THT	C9-C8-C7	5.11	120.67	113.12
3	C	1306	THT	C9-C8-C7	5.34	121.00	113.12
2	C	1305	NAD	O4B-C1B-N9A	5.35	119.30	108.10
2	A	1301	NAD	O4B-C1B-N9A	5.39	119.38	108.10
2	D	1307	NAD	O4B-C1B-N9A	5.60	119.82	108.10
3	F	1310	THT	C9-C8-C7	5.61	121.40	113.12
2	F	1309	NAD	O4B-C1B-N9A	5.97	120.60	108.10
3	F	1310	THT	C8-C7-S6	6.02	118.77	113.36
2	E	1308	NAD	PN-O3-PA	6.13	149.93	132.73
2	B	1303	NAD	O4B-C1B-N9A	6.26	121.21	108.10
3	A	1302	THT	C8-C7-S6	6.96	119.62	113.36
2	E	1308	NAD	O4B-C1B-N9A	7.40	123.59	108.10
3	C	1306	THT	C8-C7-S6	7.45	120.06	113.36
3	B	1304	THT	C8-C7-S6	7.68	120.26	113.36

There are no chirality outliers.

There are no torsion outliers.

There are no ring outliers.

10 monomers are involved in 82 short contacts:

Mol	Chain	Res	Type	Clashes	Symm-Clashes
2	A	1301	NAD	2	0
3	A	1302	THT	17	0
2	B	1303	NAD	1	0
3	B	1304	THT	15	0
2	C	1305	NAD	1	0
3	C	1306	THT	17	0
2	D	1307	NAD	2	0
2	E	1308	NAD	9	0
2	F	1309	NAD	1	0
3	F	1310	THT	17	0

5.7 Other polymers ⓘ

There are no such residues in this entry.

5.8 Polymer linkage issues ⓘ

There are no chain breaks in this entry.

6 Fit of model and data [i](#)

6.1 Protein, DNA and RNA chains [i](#)

EDS was not executed - this section will therefore be empty.

6.2 Non-standard residues in protein, DNA, RNA chains [i](#)

EDS was not executed - this section will therefore be empty.

6.3 Carbohydrates [i](#)

EDS was not executed - this section will therefore be empty.

6.4 Ligands [i](#)

EDS was not executed - this section will therefore be empty.

6.5 Other polymers [i](#)

EDS was not executed - this section will therefore be empty.