



Full wwPDB X-ray Structure Validation Report ⓘ

Feb 1, 2016 – 07:42 AM GMT

PDB ID : 3BV2
Title : Morpholino pyrrolotriazine P38 Alpha map kinase inhibitor compound 30
Authors : Sack, J.S.
Deposited on : 2008-01-04
Resolution : 2.40 Å(reported)

This is a Full wwPDB X-ray Structure Validation Report for a publicly released PDB entry.
We welcome your comments at validation@mail.wwpdb.org
A user guide is available at
<http://wwpdb.org/validation/2016/XrayValidationReportHelp>
with specific help available everywhere you see the ⓘ symbol.

The following versions of software and data (see [references ⓘ](#)) were used in the production of this report:

MolProbity : 4.02b-467
Mogul : 1.7 (RC4), CSD as536be (2015)
Xtriage (Phenix) : 1.9-1692
EDS : rb-20026688
Percentile statistics : 20151230.v01 (using entries in the PDB archive December 30th 2015)
Refmac : 5.8.0135
CCP4 : 6.5.0
Ideal geometry (proteins) : Engh & Huber (2001)
Ideal geometry (DNA, RNA) : Parkinson et al. (1996)
Validation Pipeline (wwPDB-VP) : trunk26865

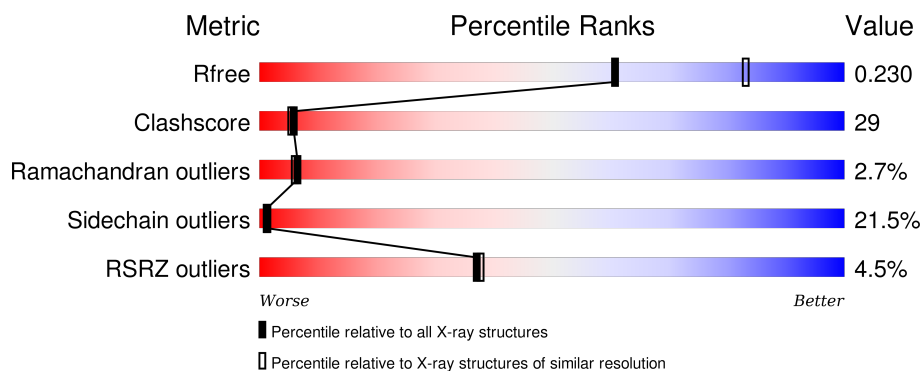
1 Overall quality at a glance

The following experimental techniques were used to determine the structure:

X-RAY DIFFRACTION

The reported resolution of this entry is 2.40 Å.

Percentile scores (ranging between 0-100) for global validation metrics of the entry are shown in the following graphic. The table shows the number of entries on which the scores are based.



Metric	Whole archive (#Entries)	Similar resolution (#Entries, resolution range(Å))
R_{free}	91344	2919 (2.40-2.40)
Clashscore	102246	3407 (2.40-2.40)
Ramachandran outliers	100387	3351 (2.40-2.40)
Sidechain outliers	100360	3352 (2.40-2.40)
RSRZ outliers	91569	2928 (2.40-2.40)

The table below summarises the geometric issues observed across the polymeric chains and their fit to the electron density. The red, orange, yellow and green segments on the lower bar indicate the fraction of residues that contain outliers for ≥ 3 , 2, 1 and 0 types of geometric quality criteria. A grey segment represents the fraction of residues that are not modelled. The numeric value for each fraction is indicated below the corresponding segment, with a dot representing fractions $\leq 5\%$. The upper red bar (where present) indicates the fraction of residues that have poor fit to the electron density. The numeric value is given above the bar.

Mol	Chain	Length	Quality of chain
1	A	366	

2 Entry composition [i](#)

There are 3 unique types of molecules in this entry. The entry contains 2862 atoms, of which 0 are hydrogens and 0 are deuteriums.

In the tables below, the ZeroOcc column contains the number of atoms modelled with zero occupancy, the AltConf column contains the number of residues with at least one atom in alternate conformation and the Trace column contains the number of residues modelled with at most 2 atoms.

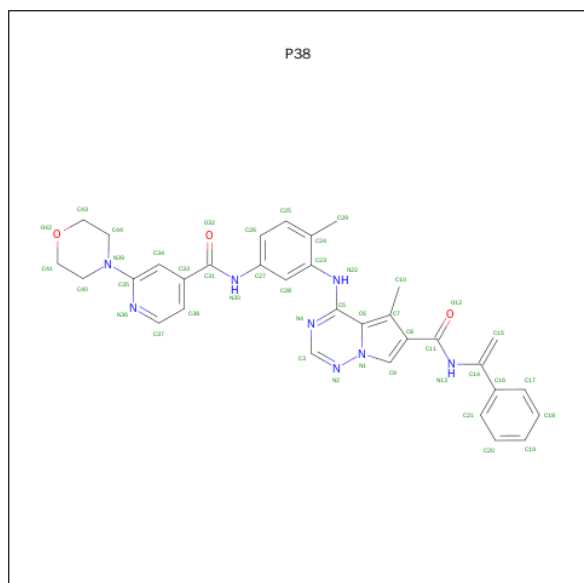
- Molecule 1 is a protein called Mitogen-activated protein kinase 14.

Mol	Chain	Residues	Atoms					ZeroOcc	AltConf	Trace
			Total	C	N	O	S			
1	A	337	2721	1745	467	497	12	0	0	0

There are 7 discrepancies between the modelled and reference sequences:

Chain	Residue	Modelled	Actual	Comment	Reference
A	-5	MET	-	EXPRESSION TAG	UNP Q16539
A	-4	ALA	-	EXPRESSION TAG	UNP Q16539
A	-3	HIS	-	EXPRESSION TAG	UNP Q16539
A	-2	HIS	-	EXPRESSION TAG	UNP Q16539
A	-1	HIS	-	EXPRESSION TAG	UNP Q16539
A	0	HIS	-	EXPRESSION TAG	UNP Q16539
A	1	HIS	-	EXPRESSION TAG	UNP Q16539

- Molecule 2 is 5-METHYL-4-[(2-METHYL-5-[(2-MORPHOLIN-4-YLPYRIDIN-4-YL)CARBONYL]AMINO}PHENYL)AMINO]-N-(1-PHENYLETHENYL)PYRROLO[2,1-F][1,2,4]TRIAZINE-6-CARBOXAMIDE (three-letter code: P38) (formula: C₃₃H₃₂N₈O₃).



Mol	Chain	Residues	Atoms				ZeroOcc	AltConf
2	A	1	Total	C	N	O	0	0
			44	33	8	3		

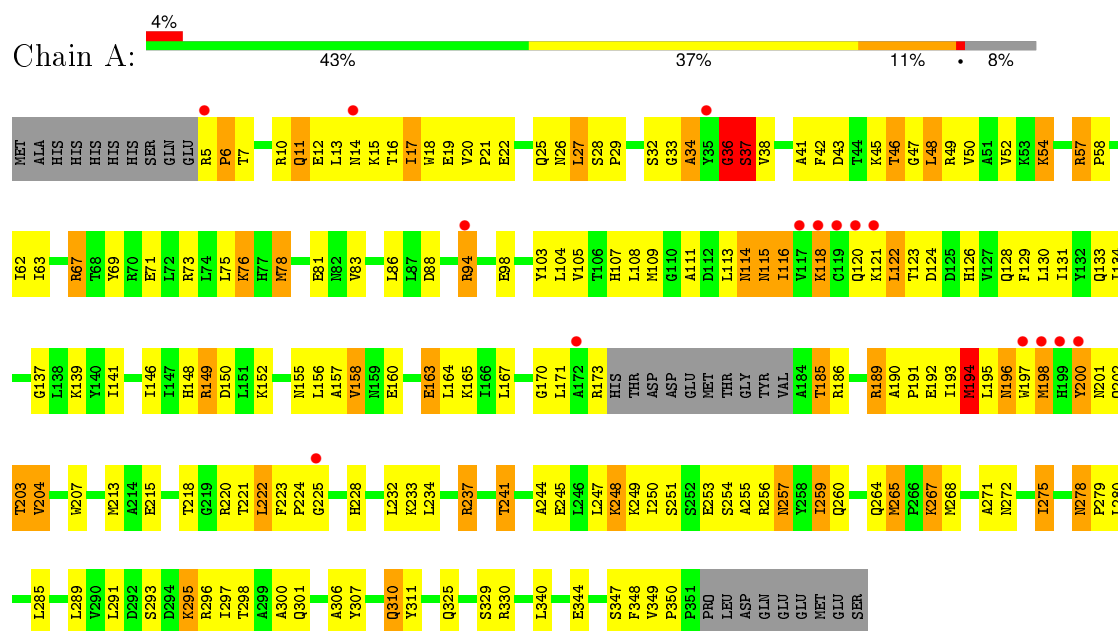
- Molecule 3 is water.

Mol	Chain	Residues	Atoms		ZeroOcc	AltConf
3	A	97	Total	O	0	0
			97	97		

3 Residue-property plots [i](#)

These plots are drawn for all protein, RNA and DNA chains in the entry. The first graphic for a chain summarises the proportions of errors displayed in the second graphic. The second graphic shows the sequence view annotated by issues in geometry and electron density. Residues are color-coded according to the number of geometric quality criteria for which they contain at least one outlier: green = 0, yellow = 1, orange = 2 and red = 3 or more. A red dot above a residue indicates a poor fit to the electron density ($RSRZ > 2$). Stretches of 2 or more consecutive residues without any outlier are shown as a green connector. Residues present in the sample, but not in the model, are shown in grey.

- Molecule 1: Mitogen-activated protein kinase 14



4 Data and refinement statistics

Property	Value	Source
Space group	P 21 21 21	Depositor
Cell constants a, b, c, α , β , γ	64.88Å 74.17Å 77.85Å 90.00° 90.00° 90.00°	Depositor
Resolution (Å)	37.09 – 2.40 37.09 – 2.40	Depositor EDS
% Data completeness (in resolution range)	93.3 (37.09-2.40) 93.5 (37.09-2.40)	Depositor EDS
R_{merge}	0.07	Depositor
R_{sym}	(Not available)	Depositor
$\langle I/\sigma(I) \rangle$ ¹	1.73 (at 2.39Å)	Xtriage
Refinement program	BUSTER-TNT 2.1.1	Depositor
R, R_{free}	0.206 , 0.263 0.216 , 0.230	Depositor DCC
R_{free} test set	718 reflections (5.31%)	DCC
Wilson B-factor (Å ²)	41.3	Xtriage
Anisotropy	0.440	Xtriage
Bulk solvent k_{sol} (e/Å ³), B_{sol} (Å ²)	0.33 , 47.1	EDS
Estimated twinning fraction	0.024 for -h,l,k	Xtriage
L-test for twinning ²	$\langle L \rangle = 0.48$, $\langle L^2 \rangle = 0.31$	Xtriage
Outliers	0 of 14230 reflections	Xtriage
F_o, F_c correlation	0.94	EDS
Total number of atoms	2862	wwPDB-VP
Average B, all atoms (Å ²)	47.0	wwPDB-VP

Xtriage's analysis on translational NCS is as follows: *The largest off-origin peak in the Patterson function is 6.17% of the height of the origin peak. No significant pseudotranslation is detected.*

¹Intensities estimated from amplitudes.

²Theoretical values of $\langle |L| \rangle$, $\langle L^2 \rangle$ for acentric reflections are 0.5, 0.375 respectively for untwinned datasets, and 0.333, 0.2 for perfectly twinned datasets.

5 Model quality [i](#)

5.1 Standard geometry [i](#)

Bond lengths and bond angles in the following residue types are not validated in this section: P38

The Z score for a bond length (or angle) is the number of standard deviations the observed value is removed from the expected value. A bond length (or angle) with $|Z| > 5$ is considered an outlier worth inspection. RMSZ is the root-mean-square of all Z scores of the bond lengths (or angles).

Mol	Chain	Bond lengths		Bond angles	
		RMSZ	$\# Z > 5$	RMSZ	$\# Z > 5$
1	A	0.37	0/2783	0.58	1/3776 (0.0%)

There are no bond length outliers.

All (1) bond angle outliers are listed below:

Mol	Chain	Res	Type	Atoms	Z	Observed($^{\circ}$)	Ideal($^{\circ}$)
1	A	36	GLY	N-CA-C	5.07	125.77	113.10

There are no chirality outliers.

There are no planarity outliers.

5.2 Too-close contacts [i](#)

In the following table, the Non-H and H(model) columns list the number of non-hydrogen atoms and hydrogen atoms in the chain respectively. The H(added) column lists the number of hydrogen atoms added and optimized by MolProbity. The Clashes column lists the number of clashes within the asymmetric unit, whereas Symm-Clashes lists symmetry related clashes.

Mol	Chain	Non-H	H(model)	H(added)	Clashes	Symm-Clashes
1	A	2721	0	2727	159	0
2	A	44	0	32	9	0
3	A	97	0	0	6	0
All	All	2862	0	2759	159	0

The all-atom clashscore is defined as the number of clashes found per 1000 atoms (including hydrogen atoms). The all-atom clashscore for this structure is 29.

All (159) close contacts within the same asymmetric unit are listed below, sorted by their clash magnitude.

Atom-1	Atom-2	Interatomic distance (Å)	Clash overlap (Å)
1:A:78:MET:HG2	1:A:83:VAL:HG11	1.32	1.08
1:A:195:LEU:HD21	1:A:232:LEU:HD13	1.42	0.99
1:A:131:ILE:HG13	1:A:213:MET:HE3	1.46	0.96
1:A:78:MET:HG2	1:A:83:VAL:CG1	2.01	0.90
1:A:222:LEU:HD13	1:A:223:PHE:CE2	2.08	0.87
1:A:32:SER:HA	1:A:37:SER:HA	1.58	0.86
1:A:131:ILE:CG1	1:A:213:MET:HE3	2.07	0.83
1:A:109:MET:O	2:A:501:P38:H21	1.83	0.79
1:A:222:LEU:HD13	1:A:223:PHE:CZ	2.18	0.78
1:A:5:ARG:NH2	1:A:94:ARG:HA	2.00	0.77
1:A:111:ALA:HA	2:A:501:P38:C15	2.15	0.77
1:A:27:LEU:HD22	1:A:41:ALA:HB2	1.67	0.75
1:A:116:ILE:HG22	1:A:122:LEU:HD21	1.69	0.74
1:A:78:MET:CG	1:A:83:VAL:HG11	2.16	0.73
1:A:124:ASP:O	1:A:128:GLN:HG3	1.90	0.72
1:A:155:ASN:ND2	1:A:170:GLY:H	1.88	0.71
1:A:155:ASN:HD21	1:A:170:GLY:H	1.38	0.71
1:A:141:ILE:HG23	1:A:146:ILE:HB	1.73	0.70
1:A:298:THR:OG1	1:A:301:GLN:HG2	1.92	0.69
1:A:115:ASN:ND2	1:A:116:ILE:HG12	2.06	0.69
1:A:278:ASN:ND2	1:A:280:LEU:H	1.91	0.69
1:A:297:ILE:CG1	1:A:301:GLN:HG3	2.23	0.69
1:A:195:LEU:HD23	1:A:195:LEU:N	2.08	0.68
1:A:186:ARG:HG2	1:A:186:ARG:HH11	1.59	0.68
1:A:250:ILE:O	1:A:256:ARG:NH1	2.27	0.68
1:A:5:ARG:HG2	1:A:6:PRO:O	1.93	0.67
1:A:297:ILE:HG12	1:A:301:GLN:HG3	1.77	0.67
1:A:49:ARG:HG2	1:A:49:ARG:HH11	1.62	0.65
1:A:186:ARG:NH1	1:A:225:GLY:O	2.29	0.65
1:A:109:MET:HA	1:A:109:MET:HE3	1.80	0.64
1:A:310:GLN:NE2	3:A:569:HOH:O	2.29	0.64
1:A:12:GLU:HG3	3:A:592:HOH:O	1.99	0.63
1:A:203:THR:OG1	1:A:296:ARG:HD2	1.98	0.63
1:A:271:ALA:O	1:A:275:ILE:HG23	1.99	0.62
1:A:52:VAL:HG22	1:A:105:VAL:HG22	1.82	0.61
1:A:131:ILE:HG21	1:A:213:MET:CE	2.30	0.61
1:A:137:GLY:O	1:A:141:ILE:HD12	2.00	0.61
1:A:201:ASN:O	1:A:204:VAL:HB	2.00	0.61
1:A:129:PHE:O	1:A:133:GLN:HG3	2.02	0.60
1:A:201:ASN:ND2	1:A:203:THR:HG22	2.16	0.59
1:A:196:ASN:C	1:A:198:MET:H	2.07	0.58
1:A:298:THR:H	1:A:301:GLN:CG	2.16	0.58

Continued on next page...

Continued from previous page...

Atom-1	Atom-2	Interatomic distance (Å)	Clash overlap (Å)
1:A:115:ASN:ND2	1:A:116:ILE:N	2.51	0.58
1:A:245:GLU:OE1	1:A:295:LYS:NZ	2.29	0.58
1:A:189:ARG:HD3	1:A:193:ILE:CD1	2.33	0.58
1:A:278:ASN:HD22	1:A:279:PRO:N	2.02	0.58
1:A:186:ARG:HD3	1:A:228:HIS:HD2	1.68	0.58
1:A:36:GLY:O	1:A:54:LYS:O	2.22	0.58
1:A:189:ARG:HD3	1:A:193:ILE:HD11	1.85	0.57
1:A:158:VAL:HA	1:A:163:GLU:O	2.05	0.57
1:A:173:ARG:HB3	2:A:501:P38:H17	1.86	0.56
1:A:215:GLU:O	1:A:218:THR:O	2.24	0.56
1:A:202:GLN:NE2	3:A:545:HOH:O	2.30	0.56
1:A:111:ALA:HA	2:A:501:P38:H15A	1.87	0.55
1:A:76:LYS:HE3	1:A:344:GLU:O	2.07	0.55
1:A:131:ILE:HG13	1:A:213:MET:HB2	1.88	0.55
1:A:160:GLU:N	1:A:160:GLU:OE1	2.39	0.55
1:A:195:LEU:HD11	1:A:232:LEU:CD1	2.37	0.54
1:A:49:ARG:NH1	1:A:49:ARG:HG2	2.22	0.54
1:A:196:ASN:O	1:A:197:TRP:HB3	2.06	0.54
1:A:278:ASN:HD22	1:A:278:ASN:C	2.11	0.54
1:A:111:ALA:HA	2:A:501:P38:H15	1.90	0.54
1:A:5:ARG:CG	1:A:6:PRO:N	2.71	0.53
1:A:241:THR:HB	1:A:265:MET:H	1.73	0.53
1:A:131:ILE:HG21	1:A:213:MET:HE3	1.89	0.53
1:A:186:ARG:HD3	1:A:228:HIS:CD2	2.44	0.52
1:A:131:ILE:CB	1:A:213:MET:HE3	2.38	0.52
1:A:297:ILE:HG13	1:A:301:GLN:HG3	1.90	0.52
1:A:256:ARG:O	1:A:260:GLN:HB2	2.08	0.52
1:A:25:GLN:O	1:A:26:ASN:HB2	2.10	0.52
1:A:27:LEU:HD22	1:A:41:ALA:CB	2.38	0.52
1:A:150:ASP:OD1	1:A:185:THR:OG1	2.27	0.52
1:A:13:LEU:O	1:A:14:ASN:HB2	2.10	0.52
1:A:42:PHE:CZ	1:A:47:GLY:HA2	2.44	0.52
1:A:54:LYS:HB2	1:A:103:TYR:CE2	2.45	0.52
1:A:194:MET:C	1:A:196:ASN:H	2.13	0.51
1:A:71:GLU:HG3	2:A:501:P38:C38	2.41	0.51
1:A:134:ILE:CD1	1:A:156:LEU:HD13	2.40	0.51
1:A:149:ARG:HG3	1:A:200:TYR:HE2	1.75	0.51
1:A:256:ARG:HA	1:A:259:ILE:CG1	2.41	0.51
1:A:33:GLY:O	1:A:34:ALA:HB3	2.10	0.51
1:A:190:ALA:HA	1:A:207:TRP:CD1	2.45	0.51
1:A:107:HIS:HD2	3:A:574:HOH:O	1.93	0.50

Continued on next page...

Continued from previous page...

Atom-1	Atom-2	Interatomic distance (Å)	Clash overlap (Å)
1:A:83:VAL:HG22	1:A:141:ILE:HD11	1.94	0.50
1:A:201:ASN:HD21	1:A:203:THR:CG2	2.24	0.50
1:A:5:ARG:HG3	1:A:6:PRO:HD2	1.94	0.50
1:A:130:LEU:O	1:A:134:ILE:HG13	2.12	0.50
1:A:253:GLU:O	1:A:257:ASN:HB2	2.11	0.50
1:A:278:ASN:HD22	1:A:280:LEU:H	1.59	0.50
1:A:186:ARG:CG	1:A:186:ARG:HH11	2.23	0.50
1:A:38:VAL:HG13	1:A:171:LEU:HD12	1.95	0.49
1:A:109:MET:HG3	1:A:157:ALA:HB1	1.93	0.49
1:A:109:MET:HG3	1:A:157:ALA:CB	2.43	0.49
1:A:241:THR:HG22	1:A:264:GLN:HE21	1.77	0.49
1:A:256:ARG:HA	1:A:259:ILE:HG12	1.94	0.48
1:A:83:VAL:CG2	1:A:141:ILE:HD11	2.43	0.48
1:A:244:ALA:O	1:A:248:LYS:HG2	2.13	0.48
1:A:195:LEU:O	1:A:196:ASN:HB2	2.13	0.48
1:A:201:ASN:ND2	1:A:203:THR:CG2	2.76	0.48
1:A:201:ASN:OD1	1:A:203:THR:HG23	2.14	0.48
1:A:46:THR:OG1	1:A:48:LEU:HB2	2.14	0.48
1:A:267:LYS:HE2	1:A:268:MET:O	2.13	0.48
1:A:310:GLN:NE2	1:A:311:TYR:CZ	2.81	0.48
1:A:71:GLU:OE2	2:A:501:P38:H38	2.14	0.47
1:A:141:ILE:CG2	1:A:146:ILE:HB	2.43	0.47
1:A:13:LEU:HD22	1:A:29:PRO:HD3	1.97	0.47
1:A:134:ILE:HD11	1:A:156:LEU:HD13	1.95	0.47
1:A:241:THR:CG2	1:A:264:GLN:NE2	2.78	0.47
1:A:195:LEU:HD11	1:A:232:LEU:HD11	1.96	0.46
1:A:280:LEU:HD22	1:A:306:ALA:HB3	1.96	0.46
1:A:241:THR:HG22	1:A:264:GLN:NE2	2.31	0.46
1:A:17:ILE:HG12	1:A:18:TRP:N	2.28	0.46
1:A:104:LEU:HB2	2:A:501:P38:H25	1.97	0.45
1:A:193:ILE:HG13	1:A:193:ILE:O	2.14	0.45
1:A:20:VAL:HB	1:A:21:PRO:CD	2.47	0.45
1:A:114:ASN:O	1:A:118:LYS:HB2	2.17	0.44
1:A:5:ARG:HH22	1:A:94:ARG:HA	1.82	0.44
1:A:191:PRO:O	1:A:195:LEU:HG	2.17	0.44
1:A:201:ASN:HD21	1:A:203:THR:HG22	1.80	0.44
1:A:123:THR:O	1:A:126:HIS:HB2	2.17	0.43
1:A:63:ILE:O	1:A:67:ARG:HB3	2.18	0.43
1:A:225:GLY:N	1:A:234:LEU:HD12	2.33	0.43
1:A:88:ASP:HA	1:A:348:PHE:CE2	2.54	0.43
1:A:45:LYS:HE3	1:A:45:LYS:HB2	1.44	0.43

Continued on next page...

Continued from previous page...

Atom-1	Atom-2	Interatomic distance (Å)	Clash overlap (Å)
1:A:221:THR:HB	1:A:224:PRO:HG3	2.01	0.43
1:A:10:ARG:O	1:A:11:GLN:HB3	2.19	0.43
1:A:164:LEU:HD23	1:A:164:LEU:C	2.38	0.43
1:A:81:GLU:HG3	3:A:534:HOH:O	2.19	0.43
1:A:139:LYS:HD2	1:A:300:ALA:HB2	2.01	0.43
1:A:115:ASN:ND2	1:A:116:ILE:H	2.17	0.42
1:A:186:ARG:CG	1:A:186:ARG:NH1	2.79	0.42
1:A:148:HIS:O	1:A:149:ARG:HB2	2.19	0.42
1:A:18:TRP:CH2	1:A:54:LYS:HB3	2.55	0.42
1:A:43:ASP:OD2	1:A:46:THR:HG23	2.19	0.42
1:A:7:THR:HB	1:A:22:GLU:HG3	2.00	0.42
1:A:186:ARG:HB3	1:A:186:ARG:CZ	2.50	0.42
1:A:43:ASP:HB2	1:A:50:VAL:CG1	2.49	0.42
1:A:75:LEU:HB3	1:A:86:LEU:HB2	2.02	0.42
1:A:131:ILE:HG21	1:A:213:MET:HE1	2.02	0.42
1:A:131:ILE:CG2	1:A:213:MET:HE3	2.49	0.42
1:A:111:ALA:HB1	1:A:115:ASN:ND2	2.34	0.41
1:A:69:TYR:CE1	1:A:340:LEU:HB3	2.54	0.41
1:A:195:LEU:HD11	1:A:232:LEU:CD2	2.50	0.41
1:A:71:GLU:HG3	2:A:501:P38:H38	2.01	0.41
1:A:128:GLN:HG2	1:A:307:TYR:CZ	2.55	0.41
1:A:164:LEU:HD23	1:A:165:LYS:N	2.35	0.41
1:A:237:ARG:N	3:A:571:HOH:O	2.54	0.41
1:A:57:ARG:N	1:A:58:PRO:HD3	2.35	0.41
1:A:114:ASN:C	1:A:114:ASN:HD22	2.24	0.41
1:A:222:LEU:HA	1:A:222:LEU:HD23	1.91	0.41
1:A:255:ALA:O	1:A:259:ILE:HG12	2.19	0.41
1:A:192:GLU:HG2	1:A:193:ILE:N	2.36	0.41
1:A:194:MET:HE3	1:A:194:MET:HB3	1.87	0.41
1:A:196:ASN:C	1:A:198:MET:N	2.73	0.40
1:A:113:LEU:HD23	1:A:156:LEU:HD12	2.02	0.40
1:A:248:LYS:HA	1:A:248:LYS:HD3	1.82	0.40
1:A:194:MET:C	1:A:196:ASN:N	2.75	0.40
1:A:155:ASN:HA	1:A:155:ASN:HD22	1.77	0.40
1:A:272:ASN:HA	1:A:272:ASN:HD22	1.72	0.40

There are no symmetry-related clashes.

5.3 Torsion angles [i](#)

5.3.1 Protein backbone [i](#)

In the following table, the Percentiles column shows the percent Ramachandran outliers of the chain as a percentile score with respect to all X-ray entries followed by that with respect to entries of similar resolution.

The Analysed column shows the number of residues for which the backbone conformation was analysed, and the total number of residues.

Mol	Chain	Analysed	Favoured	Allowed	Outliers	Percentiles
1	A	333/366 (91%)	303 (91%)	21 (6%)	9 (3%)	6 6

All (9) Ramachandran outliers are listed below:

Mol	Chain	Res	Type
1	A	15	LYS
1	A	6	PRO
1	A	34	ALA
1	A	37	SER
1	A	194	MET
1	A	196	ASN
1	A	11	GLN
1	A	36	GLY
1	A	350	PRO

5.3.2 Protein sidechains [i](#)

In the following table, the Percentiles column shows the percent sidechain outliers of the chain as a percentile score with respect to all X-ray entries followed by that with respect to entries of similar resolution.

The Analysed column shows the number of residues for which the sidechain conformation was analysed, and the total number of residues.

Mol	Chain	Analysed	Rotameric	Outliers	Percentiles
1	A	298/325 (92%)	234 (78%)	64 (22%)	1 1

All (64) residues with a non-rotameric sidechain are listed below:

Mol	Chain	Res	Type
1	A	16	THR
1	A	17	ILE

Continued on next page...

Continued from previous page...

Mol	Chain	Res	Type
1	A	19	GLU
1	A	27	LEU
1	A	28	SER
1	A	37	SER
1	A	46	THR
1	A	48	LEU
1	A	54	LYS
1	A	57	ARG
1	A	62	ILE
1	A	67	ARG
1	A	73	ARG
1	A	76	LYS
1	A	78	MET
1	A	94	ARG
1	A	98	GLU
1	A	108	LEU
1	A	114	ASN
1	A	115	ASN
1	A	116	ILE
1	A	118	LYS
1	A	120	GLN
1	A	121	LYS
1	A	122	LEU
1	A	149	ARG
1	A	152	LYS
1	A	158	VAL
1	A	163	GLU
1	A	167	LEU
1	A	185	THR
1	A	189	ARG
1	A	194	MET
1	A	198	MET
1	A	200	TYR
1	A	203	THR
1	A	204	VAL
1	A	220	ARG
1	A	222	LEU
1	A	233	LYS
1	A	237	ARG
1	A	241	THR
1	A	247	LEU
1	A	248	LYS

Continued on next page...

Continued from previous page...

Mol	Chain	Res	Type
1	A	249	LYS
1	A	251	SER
1	A	254	SER
1	A	257	ASN
1	A	259	ILE
1	A	265	MET
1	A	267	LYS
1	A	275	ILE
1	A	278	ASN
1	A	285	LEU
1	A	289	LEU
1	A	291	LEU
1	A	293	SER
1	A	295	LYS
1	A	310	GLN
1	A	325	GLN
1	A	329	SER
1	A	330	ARG
1	A	347	SER
1	A	349	VAL

Some sidechains can be flipped to improve hydrogen bonding and reduce clashes. All (11) such sidechains are listed below:

Mol	Chain	Res	Type
1	A	25	GLN
1	A	77	HIS
1	A	107	HIS
1	A	115	ASN
1	A	128	GLN
1	A	155	ASN
1	A	228	HIS
1	A	264	GLN
1	A	272	ASN
1	A	278	ASN
1	A	310	GLN

5.3.3 RNA ⓘ

There are no RNA molecules in this entry.

5.4 Non-standard residues in protein, DNA, RNA chains [i](#)

There are no non-standard protein/DNA/RNA residues in this entry.

5.5 Carbohydrates [i](#)

There are no carbohydrates in this entry.

5.6 Ligand geometry [i](#)

1 ligand is modelled in this entry.

In the following table, the Counts columns list the number of bonds (or angles) for which Mogul statistics could be retrieved, the number of bonds (or angles) that are observed in the model and the number of bonds (or angles) that are defined in the chemical component dictionary. The Link column lists molecule types, if any, to which the group is linked. The Z score for a bond length (or angle) is the number of standard deviations the observed value is removed from the expected value. A bond length (or angle) with $|Z| > 2$ is considered an outlier worth inspection. RMSZ is the root-mean-square of all Z scores of the bond lengths (or angles).

Mol	Type	Chain	Res	Link	Bond lengths			Bond angles		
					Counts	RMSZ	$\# Z > 2$	Counts	RMSZ	$\# Z > 2$
2	P38	A	501	-	43,49,49	3.29	20 (46%)	52,69,69	2.85	25 (48%)

In the following table, the Chirals column lists the number of chiral outliers, the number of chiral centers analysed, the number of these observed in the model and the number defined in the chemical component dictionary. Similar counts are reported in the Torsion and Rings columns. '-' means no outliers of that kind were identified.

Mol	Type	Chain	Res	Link	Chirals	Torsions	Rings
2	P38	A	501	-	-	0/26/36/36	0/6/6/6

All (20) bond length outliers are listed below:

Mol	Chain	Res	Type	Atoms	Z	Observed(Å)	Ideal(Å)
2	A	501	P38	C8-C11	-7.44	1.34	1.50
2	A	501	P38	C33-C31	-2.30	1.45	1.50
2	A	501	P38	C19-C18	2.05	1.43	1.38
2	A	501	P38	C3-N4	2.20	1.38	1.33
2	A	501	P38	C20-C21	2.22	1.43	1.38
2	A	501	P38	C37-N36	2.28	1.39	1.34
2	A	501	P38	C31-N30	2.34	1.41	1.35
2	A	501	P38	C10-C7	2.42	1.56	1.51

Continued on next page...

Continued from previous page...

Mol	Chain	Res	Type	Atoms	Z	Observed(Å)	Ideal(Å)
2	A	501	P38	C40-N39	2.63	1.50	1.46
2	A	501	P38	C34-C35	2.72	1.43	1.39
2	A	501	P38	C29-C24	2.87	1.56	1.51
2	A	501	P38	C21-C16	2.90	1.44	1.39
2	A	501	P38	C38-C33	3.30	1.44	1.39
2	A	501	P38	C26-C27	3.59	1.45	1.39
2	A	501	P38	C11-N13	3.65	1.44	1.37
2	A	501	P38	C28-C27	4.35	1.46	1.39
2	A	501	P38	C25-C24	5.64	1.52	1.39
2	A	501	P38	C23-C24	7.25	1.53	1.40
2	A	501	P38	C14-N13	8.75	1.55	1.40
2	A	501	P38	C15-C14	9.62	1.53	1.33

All (25) bond angle outliers are listed below:

Mol	Chain	Res	Type	Atoms	Z	Observed(°)	Ideal(°)
2	A	501	P38	C37-C38-C33	-8.62	110.10	119.06
2	A	501	P38	N2-C3-N4	-5.65	119.10	128.66
2	A	501	P38	C8-C7-C6	-3.87	102.36	107.56
2	A	501	P38	C26-C25-C24	-3.75	116.79	122.00
2	A	501	P38	C8-C11-N13	-3.73	108.49	115.27
2	A	501	P38	C34-C35-N36	-3.33	116.54	122.49
2	A	501	P38	C17-C16-C14	-2.76	118.19	121.02
2	A	501	P38	C29-C24-C25	-2.62	114.98	120.33
2	A	501	P38	C16-C14-N13	-2.15	110.09	116.89
2	A	501	P38	C19-C20-C21	-2.10	117.12	120.19
2	A	501	P38	O32-C31-C33	-2.07	117.44	120.97
2	A	501	P38	C34-C33-C31	-2.03	114.11	120.49
2	A	501	P38	C40-N39-C35	-2.01	115.44	120.22
2	A	501	P38	C40-N39-C44	2.19	116.18	111.59
2	A	501	P38	C43-O42-C41	2.34	117.77	109.89
2	A	501	P38	O32-C31-N30	2.53	129.24	123.68
2	A	501	P38	C38-C33-C34	2.72	122.53	119.24
2	A	501	P38	C37-N36-C35	2.79	120.53	116.92
2	A	501	P38	C25-C24-C23	2.88	119.65	117.39
2	A	501	P38	C26-C27-C28	3.68	124.09	119.69
2	A	501	P38	C29-C24-C23	3.81	125.33	121.36
2	A	501	P38	O12-C11-N13	4.19	128.86	122.36
2	A	501	P38	C38-C37-N36	4.68	129.25	123.90
2	A	501	P38	N36-C35-N39	4.69	123.72	116.96
2	A	501	P38	C3-N4-C5	7.59	121.95	116.48

There are no chirality outliers.

There are no torsion outliers.

There are no ring outliers.

1 monomer is involved in 9 short contacts:

Mol	Chain	Res	Type	Clashes	Symm-Clashes
2	A	501	P38	9	0

5.7 Other polymers [i](#)

There are no such residues in this entry.

5.8 Polymer linkage issues [i](#)

There are no chain breaks in this entry.

6 Fit of model and data [i](#)

6.1 Protein, DNA and RNA chains [i](#)

In the following table, the column labelled ‘#RSRZ> 2’ contains the number (and percentage) of RSRZ outliers, followed by percent RSRZ outliers for the chain as percentile scores relative to all X-ray entries and entries of similar resolution. The OWAB column contains the minimum, median, 95th percentile and maximum values of the occupancy-weighted average B-factor per residue. The column labelled ‘Q< 0.9’ lists the number of (and percentage) of residues with an average occupancy less than 0.9.

Mol	Chain	Analysed	<RSRZ>	#RSRZ>2	OWAB(Å ²)	Q<0.9
1	A	337/366 (92%)	-0.01	15 (4%) 37 38	26, 44, 76, 96	0

All (15) RSRZ outliers are listed below:

Mol	Chain	Res	Type	RSRZ
1	A	200	TYR	4.5
1	A	198	MET	4.4
1	A	197	TRP	3.7
1	A	118	LYS	3.6
1	A	120	GLN	3.5
1	A	5	ARG	3.4
1	A	94	ARG	3.4
1	A	172	ALA	3.2
1	A	119	CYS	3.0
1	A	14	ASN	2.9
1	A	117	VAL	2.9
1	A	225	GLY	2.8
1	A	199	HIS	2.7
1	A	35	TYR	2.5
1	A	121	LYS	2.2

6.2 Non-standard residues in protein, DNA, RNA chains [i](#)

There are no non-standard protein/DNA/RNA residues in this entry.

6.3 Carbohydrates [i](#)

There are no carbohydrates in this entry.

6.4 Ligands [i](#)

In the following table, the Atoms column lists the number of modelled atoms in the group and the number defined in the chemical component dictionary. LLDF column lists the quality of electron density of the group with respect to its neighbouring residues in protein, DNA or RNA chains. The B-factors column lists the minimum, median, 95th percentile and maximum values of B factors of atoms in the group. The column labelled 'Q< 0.9' lists the number of atoms with occupancy less than 0.9.

Mol	Type	Chain	Res	Atoms	RSCC	RSR	LLDF	B-factors(\AA^2)	Q<0.9
2	P38	A	501	44/44	0.94	0.14	-0.26	27,33,48,49	0

6.5 Other polymers [i](#)

There are no such residues in this entry.