



# Full wwPDB X-ray Structure Validation Report ⓘ

Feb 1, 2016 – 07:42 AM GMT

PDB ID : 3BWK  
Title : Crystal Structure of Falcipain-3 with Its inhibitor, K11017  
Authors : Kerr, I.; Lee, J.H.; Brinen, L.S.  
Deposited on : 2008-01-09  
Resolution : 2.42 Å(reported)

This is a Full wwPDB X-ray Structure Validation Report for a publicly released PDB entry.  
We welcome your comments at [validation@mail.wwpdb.org](mailto:validation@mail.wwpdb.org)  
A user guide is available at  
<http://wwpdb.org/validation/2016/XrayValidationReportHelp>  
with specific help available everywhere you see the ⓘ symbol.

---

The following versions of software and data (see [references ⓘ](#)) were used in the production of this report:

MolProbity : 4.02b-467  
Mogul : 1.7 (RC4), CSD as536be (2015)  
Xtriage (Phenix) : 1.9-1692  
EDS : rb-20026688  
Percentile statistics : 20151230.v01 (using entries in the PDB archive December 30th 2015)  
Refmac : 5.8.0135  
CCP4 : 6.5.0  
Ideal geometry (proteins) : Engh & Huber (2001)  
Ideal geometry (DNA, RNA) : Parkinson et al. (1996)  
Validation Pipeline (wwPDB-VP) : trunk26865

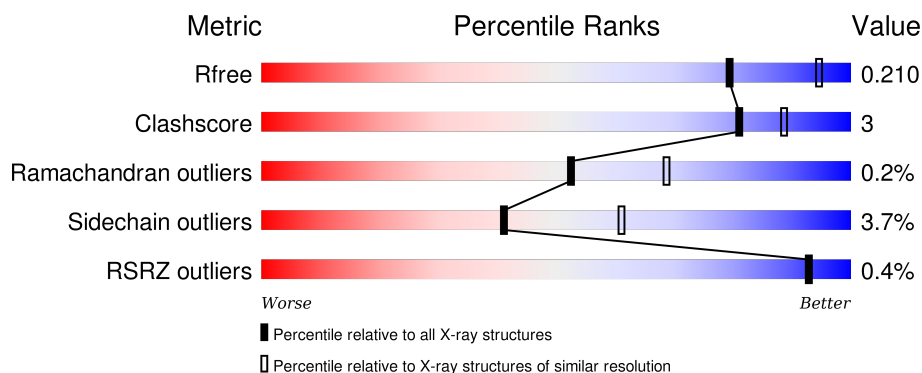
# 1 Overall quality at a glance

The following experimental techniques were used to determine the structure:

## *X-RAY DIFFRACTION*





The reported resolution of this entry is 2.42 Å.

Percentile scores (ranging between 0-100) for global validation metrics of the entry are shown in the following graphic. The table shows the number of entries on which the scores are based.



Metric	Whole archive (#Entries)	Similar resolution (#Entries, resolution range(Å))
$R_{free}$	91344	3386 (2.44-2.40)
Clashscore	102246	3897 (2.44-2.40)
Ramachandran outliers	100387	3837 (2.44-2.40)
Sidechain outliers	100360	3838 (2.44-2.40)
RSRZ outliers	91569	3396 (2.44-2.40)

The table below summarises the geometric issues observed across the polymeric chains and their fit to the electron density. The red, orange, yellow and green segments on the lower bar indicate the fraction of residues that contain outliers for  $\geq 3$ , 2, 1 and 0 types of geometric quality criteria. A grey segment represents the fraction of residues that are not modelled. The numeric value for each fraction is indicated below the corresponding segment, with a dot representing fractions  $\leq 5\%$ . The upper red bar (where present) indicates the fraction of residues that have poor fit to the electron density. The numeric value is given above the bar.

Mol	Chain	Length	Quality of chain
1	A	243	 90% 8% •
1	B	243	 91% 7% •
1	C	243	 89% 7% •
1	D	243	 2% 86% 9% 5%

## 2 Entry composition [i](#)

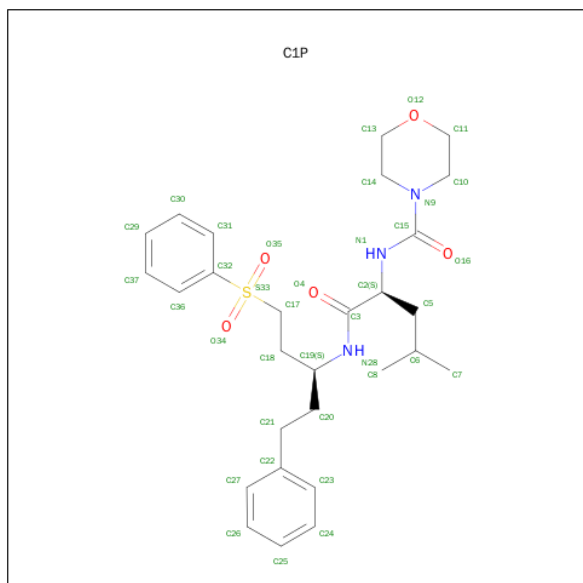
There are 4 unique types of molecules in this entry. The entry contains 8185 atoms, of which 0 are hydrogens and 0 are deuteriums.

In the tables below, the ZeroOcc column contains the number of atoms modelled with zero occupancy, the AltConf column contains the number of residues with at least one atom in alternate conformation and the Trace column contains the number of residues modelled with at most 2 atoms.

- Molecule 1 is a protein called Cysteine protease falcipain-3.

Mol	Chain	Residues	Atoms					ZeroOcc	AltConf	Trace
1	A	242	Total	C	N	O	S	0	1	0
			1921	1225	307	377	12			
1	B	242	Total	C	N	O	S	0	0	0
			1916	1222	307	375	12			
1	C	234	Total	C	N	O	S	0	0	0
			1849	1183	295	360	11			
1	D	231	Total	C	N	O	S	0	1	0
			1829	1171	292	355	11			

- Molecule 2 is N 2 -(MORPHOLIN-4-YLCARBONYL)-N-[(3S)-1-PHENYL-5-(PHENYLSULFONYL)PENTAN-3-YL]-L-LEUCINAMIDE (three-letter code: C1P) (formula: C<sub>28</sub>H<sub>39</sub>N<sub>3</sub>O<sub>5</sub>S).



Mol	Chain	Residues	Atoms					ZeroOcc	AltConf
2	A	1	Total	C	N	O	S	0	0
			37	28	3	5	1		

*Continued on next page...*

Continued from previous page...

Mol	Chain	Residues	Atoms					ZeroOcc	AltConf
2	B	1	Total	C	N	O	S	0	0
			37	28	3	5	1		
2	C	1	Total	C	N	O	S	0	0
			37	28	3	5	1		
2	D	1	Total	C	N	O	S	0	0
			37	28	3	5	1		

- Molecule 3 is SULFATE ION (three-letter code: SO4) (formula: O<sub>4</sub>S).



Mol	Chain	Residues	Atoms			ZeroOcc	AltConf
3	A	1	Total	O	S	0	0
			5	4	1		
3	B	1	Total	O	S	0	0
			5	4	1		
3	B	1	Total	O	S	0	0
			5	4	1		
3	C	1	Total	O	S	0	0
			5	4	1		
3	D	1	Total	O	S	0	0
			5	4	1		

- Molecule 4 is water.

Mol	Chain	Residues	Atoms		ZeroOcc	AltConf
4	A	153	Total	O	0	0
			153	153		

Continued on next page...


*Continued from previous page...*

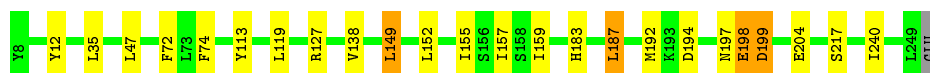
Mol	Chain	Residues	Atoms		ZeroOcc	AltConf
4	B	131	Total 131	O 131	0	0
4	C	129	Total 129	O 129	0	0
4	D	84	Total 84	O 84	0	0

### 3 Residue-property plots

These plots are drawn for all protein, RNA and DNA chains in the entry. The first graphic for a chain summarises the proportions of errors displayed in the second graphic. The second graphic shows the sequence view annotated by issues in geometry and electron density. Residues are color-coded according to the number of geometric quality criteria for which they contain at least one outlier: green = 0, yellow = 1, orange = 2 and red = 3 or more. A red dot above a residue indicates a poor fit to the electron density ( $RSRZ > 2$ ). Stretches of 2 or more consecutive residues without any outlier are shown as a green connector. Residues present in the sample, but not in the model, are shown in grey.

- Molecule 1: Cysteine protease falcipain-3

Chain A: 



- Molecule 1: Cysteine protease falcipain-3

Chain B: 




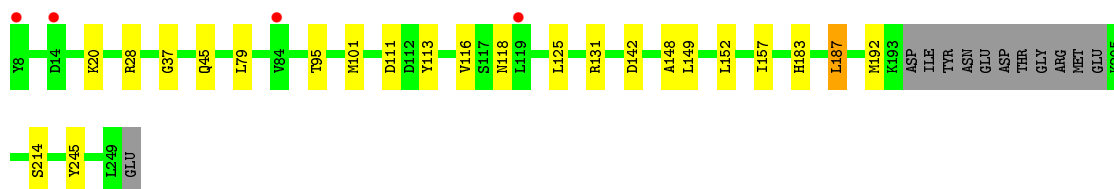
- Molecule 1: Cysteine protease falcipain-3

Chain C: 



- Molecule 1: Cysteine protease falcipain-3

Chain D: 



## 4 Data and refinement statistics

Property	Value	Source
Space group	P 41 21 2	Depositor
Cell constants a, b, c, $\alpha$ , $\beta$ , $\gamma$	114.00Å 114.00Å 226.12Å 90.00° 90.00° 90.00°	Depositor
Resolution (Å)	101.53 – 2.42 101.79 – 2.42	Depositor EDS
% Data completeness (in resolution range)	100.0 (101.53-2.42) 99.9 (101.79-2.42)	Depositor EDS
$R_{merge}$	0.09	Depositor
$R_{sym}$	(Not available)	Depositor
$\langle I/\sigma(I) \rangle$ <sup>1</sup>	6.53 (at 2.42Å)	Xtriage
Refinement program	REFMAC 5.2.0019	Depositor
R, $R_{free}$	0.175 , 0.209 0.177 , 0.210	Depositor DCC
$R_{free}$ test set	2924 reflections (5.35%)	DCC
Wilson B-factor (Å <sup>2</sup> )	33.3	Xtriage
Anisotropy	0.395	Xtriage
Bulk solvent $k_{sol}$ (e/Å <sup>3</sup> ), $B_{sol}$ (Å <sup>2</sup> )	0.35 , 53.5	EDS
Estimated twinning fraction	No twinning to report.	Xtriage
L-test for twinning <sup>2</sup>	$\langle  L  \rangle = 0.49$ , $\langle L^2 \rangle = 0.32$	Xtriage
Outliers	0 of 57610 reflections	Xtriage
$F_o, F_c$ correlation	0.94	EDS
Total number of atoms	8185	wwPDB-VP
Average B, all atoms (Å <sup>2</sup> )	31.0	wwPDB-VP

Xtriage's analysis on translational NCS is as follows: *The largest off-origin peak in the Patterson function is 8.03% of the height of the origin peak. No significant pseudotranslation is detected.*

<sup>1</sup>Intensities estimated from amplitudes.

<sup>2</sup>Theoretical values of  $\langle |L| \rangle$ ,  $\langle L^2 \rangle$  for acentric reflections are 0.5, 0.375 respectively for untwinned datasets, and 0.333, 0.2 for perfectly twinned datasets.

## 5 Model quality

### 5.1 Standard geometry

Bond lengths and bond angles in the following residue types are not validated in this section: C1P, SO4

The Z score for a bond length (or angle) is the number of standard deviations the observed value is removed from the expected value. A bond length (or angle) with  $|Z| > 5$  is considered an outlier worth inspection. RMSZ is the root-mean-square of all Z scores of the bond lengths (or angles).

Mol	Chain	Bond lengths		Bond angles	
		RMSZ	$\# Z  > 5$	RMSZ	$\# Z  > 5$
1	A	0.73	0/1972	0.79	1/2669 (0.0%)
1	B	0.68	0/1964	0.75	2/2658 (0.1%)
1	C	0.70	0/1895	0.71	1/2564 (0.0%)
1	D	0.65	0/1878	0.71	0/2541
All	All	0.69	0/7709	0.74	4/10432 (0.0%)

Chiral center outliers are detected by calculating the chiral volume of a chiral center and verifying if the center is modelled as a planar moiety or with the opposite hand. A planarity outlier is detected by checking planarity of atoms in a peptide group, atoms in a mainchain group or atoms of a sidechain that are expected to be planar.

Mol	Chain	#Chirality outliers	#Planarity outliers
1	A	0	1

There are no bond length outliers.

All (4) bond angle outliers are listed below:

Mol	Chain	Res	Type	Atoms	Z	Observed(°)	Ideal(°)
1	B	131	ARG	NE-CZ-NH2	-5.58	117.51	120.30
1	A	127	ARG	NE-CZ-NH2	-5.54	117.53	120.30
1	B	81	ASP	CB-CG-OD2	-5.17	113.65	118.30
1	C	218	ASP	CB-CG-OD2	5.14	122.92	118.30

There are no chirality outliers.

All (1) planarity outliers are listed below:

Mol	Chain	Res	Type	Group
1	A	198	GLU	Peptide



## 5.2 Too-close contacts ⓘ

In the following table, the Non-H and H(model) columns list the number of non-hydrogen atoms and hydrogen atoms in the chain respectively. The H(added) column lists the number of hydrogen atoms added and optimized by MolProbity. The Clashes column lists the number of clashes within the asymmetric unit, whereas Symm-Clashes lists symmetry related clashes.

Mol	Chain	Non-H	H(model)	H(added)	Clashes	Symm-Clashes
1	A	1921	0	1809	13	0
1	B	1916	0	1805	16	0
1	C	1849	0	1749	6	0
1	D	1829	0	1730	16	0
2	A	37	0	38	1	0
2	B	37	0	38	1	0
2	C	37	0	38	1	0
2	D	37	0	38	1	0
3	A	5	0	0	0	0
3	B	10	0	0	0	0
3	C	5	0	0	0	0
3	D	5	0	0	1	0
4	A	153	0	0	0	0
4	B	131	0	0	1	0
4	C	129	0	0	1	0
4	D	84	0	0	0	0
All	All	8185	0	7245	47	0

The all-atom clashscore is defined as the number of clashes found per 1000 atoms (including hydrogen atoms). The all-atom clashscore for this structure is 3.

All (47) close contacts within the same asymmetric unit are listed below, sorted by their clash magnitude.

Atom-1	Atom-2	Interatomic distance (Å)	Clash overlap (Å)
1:D:157:ILE:CD1	1:D:187:LEU:HD13	2.25	0.67
1:D:125:LEU:HD13	1:D:131:ARG:HH22	1.65	0.61
1:B:218:ASP:HB2	4:B:341:HOH:O	2.00	0.61
1:D:157:ILE:HD13	1:D:187:LEU:HD13	1.84	0.59
1:A:149:LEU:HD13	1:A:155:ILE:HG13	1.84	0.59
1:C:183:HIS:ND1	2:C:300:C1P:H17	2.19	0.57
1:D:20:LYS:NZ	3:D:301:SO4:O4	2.35	0.57
1:C:144:LYS:NZ	4:C:417:HOH:O	2.37	0.56
1:D:45:GLN:HG2	1:D:214:SER:O	2.06	0.56
1:D:125:LEU:HD13	1:D:131:ARG:NH2	2.22	0.54
1:A:157:ILE:CD1	1:A:187:LEU:HD13	2.38	0.54

*Continued on next page...*

*Continued from previous page...*

Atom-1	Atom-2	Interatomic distance (Å)	Clash overlap (Å)
1:A:35:LEU:O	1:D:37:GLY:HA2	2.08	0.53
1:B:157:ILE:HD13	1:B:187:LEU:HG	1.91	0.53
1:D:116:VAL:HG22	1:D:116:VAL:O	2.08	0.53
1:D:79:LEU:HD11	1:D:101:MET:CE	2.40	0.51
1:B:149:LEU:HD13	1:B:155:ILE:HG13	1.93	0.50
1:A:197:ASN:OD1	1:A:199:ASP:HB3	2.12	0.50
1:B:35:LEU:O	1:C:37:GLY:HA2	2.12	0.49
1:D:157:ILE:HD11	1:D:187:LEU:HD13	1.93	0.49
1:A:198:GLU:CA	1:A:199:ASP:HB2	2.43	0.49
1:B:200:THR:HG21	1:B:204:GLU:OE2	2.12	0.48
1:A:157:ILE:HD13	1:A:187:LEU:HD13	1.96	0.48
1:A:157:ILE:HG21	1:A:187:LEU:HD22	1.96	0.48
1:B:187:LEU:HD22	1:B:209:TYR:HB3	1.95	0.47
1:B:183:HIS:ND1	2:B:300:C1P:H17	2.29	0.47
1:D:95:THR:HG23	1:D:245:TYR:CZ	2.50	0.47
1:B:192:MET:HE3	1:B:193:LYS:CA	2.45	0.47
1:D:79:LEU:HD11	1:D:101:MET:HE2	1.98	0.46
1:D:148:ALA:O	1:D:152:LEU:HB2	2.17	0.45
1:A:197:ASN:ND2	1:A:204:GLU:OE2	2.51	0.44
1:D:183:HIS:ND1	2:D:300:C1P:H17	2.32	0.44
1:B:200:THR:HG21	1:B:204:GLU:CG	2.48	0.43
1:B:145:PHE:O	1:B:149:LEU:HB2	2.18	0.43
1:A:35:LEU:HB3	1:D:37:GLY:HA2	2.00	0.43
1:A:183:HIS:ND1	2:A:300:C1P:H17	2.34	0.43
1:C:81:ASP:OD2	1:C:121:GLU:OE1	2.36	0.42
1:B:125:LEU:HD13	1:B:131:ARG:HH22	1.84	0.42
1:A:72:PHE:HB3	1:A:74:PHE:CZ	2.54	0.42
1:B:200:THR:HG23	1:B:202:ARG:HG2	2.00	0.42
1:C:168:TYR:CD1	1:C:220:GLY:HA2	2.55	0.42
1:B:125:LEU:HD13	1:B:131:ARG:NH2	2.35	0.41
1:B:197:ASN:HB3	1:B:200:THR:HG22	2.02	0.41
1:B:167:PHE:HA	1:D:118:ASN:HD22	1.85	0.41
1:A:12:TYR:HA	1:A:138:VAL:HG21	2.02	0.40
1:B:192:MET:HE3	1:B:193:LYS:C	2.42	0.40
1:A:159:ILE:HD12	1:A:240:ILE:HG22	2.04	0.40
1:C:192:MET:HG3	1:C:207:TYR:CE2	2.57	0.40

There are no symmetry-related clashes.

## 5.3 Torsion angles [i](#)

### 5.3.1 Protein backbone [i](#)

In the following table, the Percentiles column shows the percent Ramachandran outliers of the chain as a percentile score with respect to all X-ray entries followed by that with respect to entries of similar resolution.

The Analysed column shows the number of residues for which the backbone conformation was analysed, and the total number of residues.

Mol	Chain	Analysed	Favoured	Allowed	Outliers	Percentiles	
1	A	241/243 (99%)	233 (97%)	7 (3%)	1 (0%)	39	54
1	B	240/243 (99%)	231 (96%)	9 (4%)	0	100	100
1	C	230/243 (95%)	223 (97%)	6 (3%)	1 (0%)	39	54
1	D	228/243 (94%)	220 (96%)	8 (4%)	0	100	100
All	All	939/972 (97%)	907 (97%)	30 (3%)	2 (0%)	52	69

All (2) Ramachandran outliers are listed below:

Mol	Chain	Res	Type
1	A	199	ASP
1	C	117	SER

### 5.3.2 Protein sidechains [i](#)

In the following table, the Percentiles column shows the percent sidechain outliers of the chain as a percentile score with respect to all X-ray entries followed by that with respect to entries of similar resolution.

The Analysed column shows the number of residues for which the sidechain conformation was analysed, and the total number of residues.

Mol	Chain	Analysed	Rotameric	Outliers	Percentiles	
1	A	203/203 (100%)	194 (96%)	9 (4%)	35	52
1	B	202/203 (100%)	196 (97%)	6 (3%)	48	69
1	C	195/203 (96%)	188 (96%)	7 (4%)	42	62
1	D	193/203 (95%)	185 (96%)	8 (4%)	37	56
All	All	793/812 (98%)	763 (96%)	30 (4%)	41	59

All (30) residues with a non-rotameric sidechain are listed below:

Mol	Chain	Res	Type
1	A	47	LEU
1	A	113	TYR
1	A	119	LEU
1	A	149	LEU
1	A	152	LEU
1	A	187	LEU
1	A	192	MET
1	A	194	ASP
1	A	217	SER
1	B	113	TYR
1	B	149	LEU
1	B	152	LEU
1	B	192	MET
1	B	200	THR
1	B	203	MET
1	C	11	ASN
1	C	42	VAL
1	C	47	LEU
1	C	111	ASP
1	C	113	TYR
1	C	144	LYS
1	C	242	THR
1	D	28	ARG
1	D	111[A]	ASP
1	D	111[B]	ASP
1	D	113	TYR
1	D	142	ASP
1	D	149	LEU
1	D	187	LEU
1	D	192	MET

Some sidechains can be flipped to improve hydrogen bonding and reduce clashes. All (1) such sidechains are listed below:

Mol	Chain	Res	Type
1	A	226	ASN

### 5.3.3 RNA ⓘ

There are no RNA molecules in this entry.

## 5.4 Non-standard residues in protein, DNA, RNA chains ⓘ

There are no non-standard protein/DNA/RNA residues in this entry.

## 5.5 Carbohydrates ⓘ

There are no carbohydrates in this entry.

## 5.6 Ligand geometry ⓘ

9 ligands are modelled in this entry.

In the following table, the Counts columns list the number of bonds (or angles) for which Mogul statistics could be retrieved, the number of bonds (or angles) that are observed in the model and the number of bonds (or angles) that are defined in the chemical component dictionary. The Link column lists molecule types, if any, to which the group is linked. The Z score for a bond length (or angle) is the number of standard deviations the observed value is removed from the expected value. A bond length (or angle) with  $|Z| > 2$  is considered an outlier worth inspection. RMSZ is the root-mean-square of all Z scores of the bond lengths (or angles).

Mol	Type	Chain	Res	Link	Bond lengths			Bond angles		
					Counts	RMSZ	# $ Z  > 2$	Counts	RMSZ	# $ Z  > 2$
2	C1P	A	300	1	39,39,39	1.01	2 (5%)	50,52,52	1.92	8 (16%)
3	SO4	A	301	-	4,4,4	0.14	0	6,6,6	0.44	0
2	C1P	B	300	1	39,39,39	1.14	2 (5%)	50,52,52	1.86	11 (22%)
3	SO4	B	301	-	4,4,4	0.28	0	6,6,6	0.19	0
3	SO4	B	302	-	4,4,4	0.13	0	6,6,6	0.27	0
2	C1P	C	300	1	39,39,39	1.19	4 (10%)	50,52,52	1.84	6 (12%)
3	SO4	C	301	-	4,4,4	0.14	0	6,6,6	0.72	0
2	C1P	D	300	1	39,39,39	0.94	3 (7%)	50,52,52	1.92	9 (18%)
3	SO4	D	301	-	4,4,4	0.32	0	6,6,6	0.46	0

In the following table, the Chirals column lists the number of chiral outliers, the number of chiral centers analysed, the number of these observed in the model and the number defined in the chemical component dictionary. Similar counts are reported in the Torsion and Rings columns. '-' means no outliers of that kind were identified.

Mol	Type	Chain	Res	Link	Chirals	Torsions	Rings
2	C1P	A	300	1	-	0/37/45/45	0/3/3/3
3	SO4	A	301	-	-	0/0/0/0	0/0/0/0
2	C1P	B	300	1	-	0/37/45/45	0/3/3/3
3	SO4	B	301	-	-	0/0/0/0	0/0/0/0
3	SO4	B	302	-	-	0/0/0/0	0/0/0/0

*Continued on next page...*

*Continued from previous page...*

Mol	Type	Chain	Res	Link	Chirals	Torsions	Rings
2	C1P	C	300	1	-	0/37/45/45	0/3/3/3
3	SO4	C	301	-	-	0/0/0/0	0/0/0/0
2	C1P	D	300	1	-	0/37/45/45	0/3/3/3
3	SO4	D	301	-	-	0/0/0/0	0/0/0/0

All (11) bond length outliers are listed below:

Mol	Chain	Res	Type	Atoms	Z	Observed(Å)	Ideal(Å)
2	B	300	C1P	C32-S33	-4.34	1.68	1.76
2	C	300	C1P	C32-S33	-3.89	1.69	1.76
2	C	300	C1P	C10-N9	2.07	1.50	1.47
2	D	300	C1P	C31-C32	2.16	1.42	1.38
2	A	300	C1P	C17-S33	2.25	1.83	1.78
2	A	300	C1P	O35-S33	2.30	1.48	1.44
2	D	300	C1P	O34-S33	2.34	1.48	1.44
2	C	300	C1P	O35-S33	2.36	1.48	1.44
2	D	300	C1P	O35-S33	2.37	1.48	1.44
2	B	300	C1P	C17-S33	2.51	1.83	1.78
2	C	300	C1P	C17-S33	3.10	1.85	1.78

All (34) bond angle outliers are listed below:

Mol	Chain	Res	Type	Atoms	Z	Observed(°)	Ideal(°)
2	A	300	C1P	O35-S33-O34	-8.65	106.97	118.40
2	D	300	C1P	O35-S33-O34	-8.08	107.73	118.40
2	C	300	C1P	O35-S33-O34	-7.41	108.61	118.40
2	B	300	C1P	O12-C11-C10	-5.13	100.08	111.84
2	C	300	C1P	C3-C2-N1	-3.87	100.36	111.26
2	B	300	C1P	C3-C2-N1	-3.85	100.40	111.26
2	B	300	C1P	C21-C20-C19	-3.69	107.79	114.40
2	C	300	C1P	O16-C15-N9	-3.58	116.30	121.77
2	A	300	C1P	C3-C2-N1	-3.53	101.31	111.26
2	C	300	C1P	C21-C20-C19	-3.41	108.28	114.40
2	A	300	C1P	O12-C11-C10	-3.41	104.03	111.84
2	D	300	C1P	C21-C20-C19	-3.01	109.01	114.40
2	D	300	C1P	O34-S33-C32	-2.80	105.31	108.38
2	B	300	C1P	O34-S33-C17	-2.67	104.71	108.08
2	A	300	C1P	O16-C15-N9	-2.57	117.85	121.77
2	D	300	C1P	C3-C2-N1	-2.57	104.03	111.26
2	B	300	C1P	C36-C32-S33	-2.48	116.50	119.47
2	B	300	C1P	O16-C15-N9	-2.48	117.98	121.77
2	B	300	C1P	O35-S33-O34	-2.40	115.23	118.40

*Continued on next page...*

*Continued from previous page...*

Mol	Chain	Res	Type	Atoms	Z	Observed(°)	Ideal(°)
2	A	300	C1P	C21-C20-C19	-2.36	110.16	114.40
2	B	300	C1P	C29-C37-C36	-2.33	116.77	120.19
2	D	300	C1P	C20-C19-N28	-2.12	107.58	110.27
2	B	300	C1P	C17-S33-C32	-2.08	102.08	105.09
2	D	300	C1P	C11-O12-C13	2.09	116.92	109.89
2	D	300	C1P	C30-C31-C32	2.15	121.28	118.95
2	B	300	C1P	C10-N9-C14	2.30	116.82	112.56
2	D	300	C1P	C36-C32-S33	2.34	122.28	119.47
2	C	300	C1P	C10-N9-C14	2.37	116.96	112.56
2	A	300	C1P	C37-C36-C32	2.44	121.59	118.95
2	A	300	C1P	O35-S33-C32	3.54	112.26	108.38
2	A	300	C1P	C17-S33-C32	4.27	111.27	105.09
2	C	300	C1P	O34-S33-C32	6.01	114.96	108.38
2	D	300	C1P	C17-S33-C32	6.44	114.42	105.09
2	B	300	C1P	O34-S33-C32	7.08	116.14	108.38

There are no chirality outliers.

There are no torsion outliers.

There are no ring outliers.

5 monomers are involved in 5 short contacts:

Mol	Chain	Res	Type	Clashes	Symm-Clashes
2	A	300	C1P	1	0
2	B	300	C1P	1	0
2	C	300	C1P	1	0
2	D	300	C1P	1	0
3	D	301	SO4	1	0

## 5.7 Other polymers [i](#)

There are no such residues in this entry.

## 5.8 Polymer linkage issues [i](#)

There are no chain breaks in this entry.

## 6 Fit of model and data [i](#)

### 6.1 Protein, DNA and RNA chains [i](#)

In the following table, the column labelled ‘#RSRZ> 2’ contains the number (and percentage) of RSRZ outliers, followed by percent RSRZ outliers for the chain as percentile scores relative to all X-ray entries and entries of similar resolution. The OWAB column contains the minimum, median, 95<sup>th</sup> percentile and maximum values of the occupancy-weighted average B-factor per residue. The column labelled ‘Q< 0.9’ lists the number of (and percentage) of residues with an average occupancy less than 0.9.

Mol	Chain	Analysed	<RSRZ>	#RSRZ>2		OWAB(Å²)	Q<0.9	
1	A	242/243 (99%)	0.06	0	100	100	18, 26, 35, 46	11 (4%)
1	B	242/243 (99%)	0.01	0	100	100	21, 30, 38, 44	11 (4%)
1	C	234/243 (96%)	0.11	0	100	100	23, 31, 39, 47	15 (6%)
1	D	231/243 (95%)	0.21	4 (1%)	73	72	29, 35, 48, 51	17 (7%)
All	All	949/972 (97%)	0.10	4 (0%)	93	93	18, 31, 41, 51	54 (5%)

All (4) RSRZ outliers are listed below:

Mol	Chain	Res	Type	RSRZ
1	D	119	LEU	4.7
1	D	8	TYR	3.3
1	D	14	ASP	2.8
1	D	84	VAL	2.2

### 6.2 Non-standard residues in protein, DNA, RNA chains [i](#)

There are no non-standard protein/DNA/RNA residues in this entry.

### 6.3 Carbohydrates [i](#)

There are no carbohydrates in this entry.

### 6.4 Ligands [i](#)

In the following table, the Atoms column lists the number of modelled atoms in the group and the number defined in the chemical component dictionary. LLDF column lists the quality of electron density of the group with respect to its neighbouring residues in protein, DNA or RNA chains. The B-factors column lists the minimum, median, 95<sup>th</sup> percentile and maximum values of B factors



of atoms in the group. The column labelled 'Q< 0.9' lists the number of atoms with occupancy less than 0.9.

Mol	Type	Chain	Res	Atoms	RSCC	RSR	LLDF	B-factors( $\text{\AA}^2$ )	Q<0.9
3	SO4	B	301	5/5	0.96	0.21	1.94	66,66,68,69	0
2	C1P	D	300	37/37	0.94	0.20	1.86	32,40,48,50	0
2	C1P	A	300	37/37	0.95	0.18	1.51	10,26,41,43	0
2	C1P	B	300	37/37	0.95	0.18	0.87	20,32,40,42	0
3	SO4	D	301	5/5	0.96	0.16	-0.47	59,59,62,63	0
2	C1P	C	300	37/37	0.96	0.15	-0.59	15,29,37,38	0
3	SO4	A	301	5/5	0.97	0.15	-0.92	42,45,46,47	0
3	SO4	C	301	5/5	0.96	0.15	-1.12	54,57,57,60	0
3	SO4	B	302	5/5	0.88	0.24	-	95,95,96,96	0

## 6.5 Other polymers [i](#)

There are no such residues in this entry.