



# Full wwPDB X-ray Structure Validation Report ⓘ

Feb 1, 2016 – 12:50 AM GMT

PDB ID : 2BY0  
Title : IS RADIATION DAMAGE DEPENDENT ON THE DOSE-RATE USED DURING MACROMOLECULAR CRYSTALLOGRAPHY DATA COLLECTION  
Authors : Leiros, H.-K.S.; Timmins, J.; Ravelli, R.B.G.; Mcsweeney, S.M.  
Deposited on : 2005-07-28  
Resolution : 1.55 Å(reported)

This is a Full wwPDB X-ray Structure Validation Report for a publicly released PDB entry.  
We welcome your comments at [validation@mail.wwpdb.org](mailto:validation@mail.wwpdb.org)  
A user guide is available at  
<http://wwpdb.org/validation/2016/XrayValidationReportHelp>  
with specific help available everywhere you see the ⓘ symbol.

---

The following versions of software and data (see [references ⓘ](#)) were used in the production of this report:

MolProbity : 4.02b-467  
Mogul : 1.7 (RC4), CSD as536be (2015)  
Xtriage (Phenix) : 1.9-1692  
EDS : rb-20026688  
Percentile statistics : 20151230.v01 (using entries in the PDB archive December 30th 2015)  
Refmac : 5.8.0135  
CCP4 : 6.5.0  
Ideal geometry (proteins) : Engh & Huber (2001)  
Ideal geometry (DNA, RNA) : Parkinson et al. (1996)  
Validation Pipeline (wwPDB-VP) : trunk26865

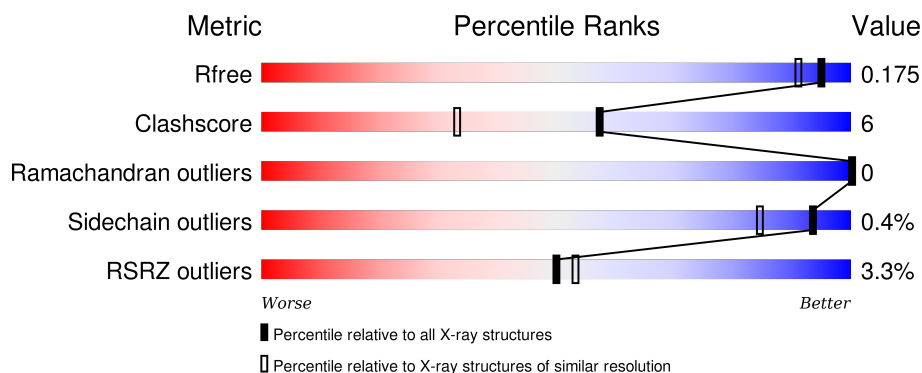
# 1 Overall quality at a glance

The following experimental techniques were used to determine the structure:

## *X-RAY DIFFRACTION*


The reported resolution of this entry is 1.55 Å.

Percentile scores (ranging between 0-100) for global validation metrics of the entry are shown in the following graphic. The table shows the number of entries on which the scores are based.



Metric	Whole archive (#Entries)	Similar resolution (#Entries, resolution range(Å))
$R_{free}$	91344	1665 (1.58-1.54)
Clashscore	102246	1014 (1.56-1.56)
Ramachandran outliers	100387	1704 (1.58-1.54)
Sidechain outliers	100360	1702 (1.58-1.54)
RSRZ outliers	91569	1668 (1.58-1.54)

The table below summarises the geometric issues observed across the polymeric chains and their fit to the electron density. The red, orange, yellow and green segments on the lower bar indicate the fraction of residues that contain outliers for  $\geq 3$ , 2, 1 and 0 types of geometric quality criteria. A grey segment represents the fraction of residues that are not modelled. The numeric value for each fraction is indicated below the corresponding segment, with a dot representing fractions  $\leq 5\%$ . The upper red bar (where present) indicates the fraction of residues that have poor fit to the electron density. The numeric value is given above the bar.

Mol	Chain	Length	Quality of chain
1	A	602	

The following table lists non-polymeric compounds, carbohydrate monomers and non-standard residues in protein, DNA, RNA chains that are outliers for geometric or electron-density-fit criteria:

Mol	Type	Chain	Res	Chirality	Geometry	Clashes	Electron density
2	TRS	A	1603	-	-	-	X

*Continued on next page...*

*Continued from previous page...*

Mol	Type	Chain	Res	Chirality	Geometry	Clashes	Electron density
3	TRE	A	1606	-	-	-	X
4	GLC	A	1605	X	-	-	X
5	BME	A	1607	-	-	-	X
6	MG	A	1608	-	-	-	X

## 2 Entry composition [i](#)

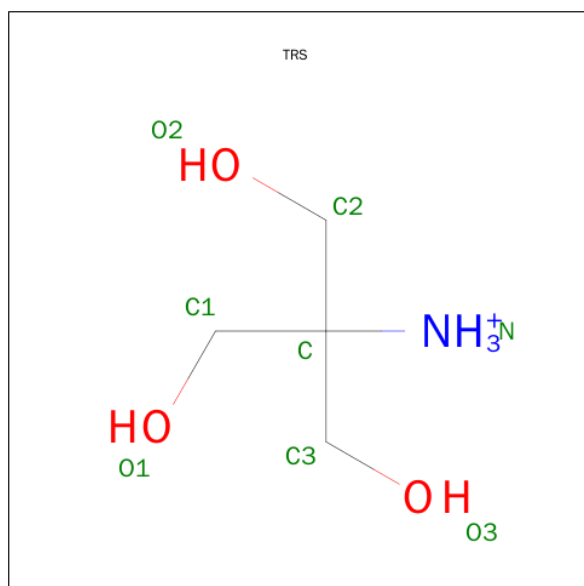
There are 7 unique types of molecules in this entry. The entry contains 5869 atoms, of which 0 are hydrogens and 0 are deuteriums.

In the tables below, the ZeroOcc column contains the number of atoms modelled with zero occupancy, the AltConf column contains the number of residues with at least one atom in alternate conformation and the Trace column contains the number of residues modelled with at most 2 atoms.

- Molecule 1 is a protein called MALTOOLIGOSYLTREHALOSE TREHALOHYDROLASE.

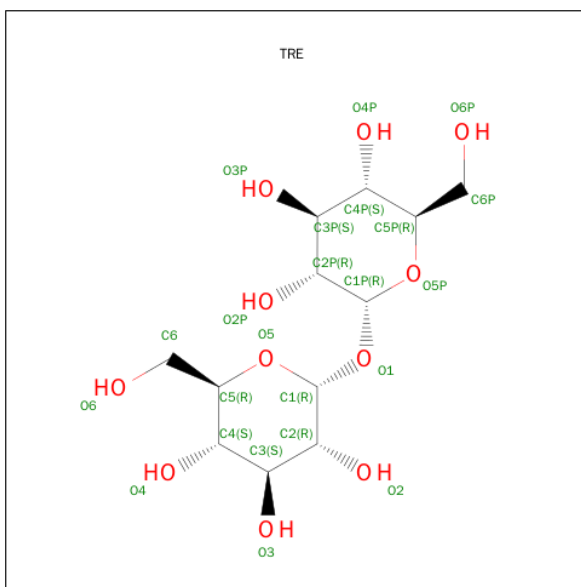
Mol	Chain	Residues	Atoms							ZeroOcc	AltConf	Trace
			Total	C	N	O	S	Se				
1	A	580	4865	3076	868	909	2	10		32	29	0

- Molecule 2 is 2-AMINO-2-HYDROXYMETHYL-PROPANE-1,3-DIOL (three-letter code: TRS) (formula:  $C_4H_{12}NO_3$ ).



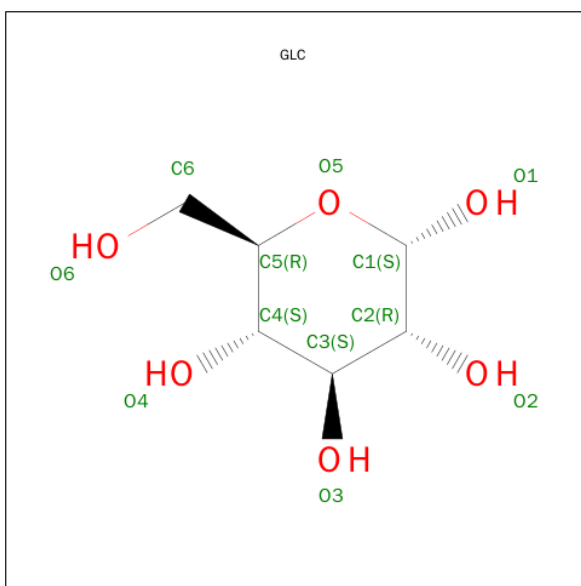
Mol	Chain	Residues	Atoms				ZeroOcc	AltConf
			Total	C	N	O		
2	A	1	8	4	1	3	0	0

- Molecule 3 is TREHALOSE (three-letter code: TRE) (formula:  $C_{12}H_{22}O_{11}$ ).



Mol	Chain	Residues	Atoms			ZeroOcc	AltConf
3	A	1	Total	C	O	0	0
			23	12	11		
3	A	1	Total	C	O	0	0
			23	12	11		

- Molecule 4 is SUGAR (ALPHA-D-GLUCOSE) (three-letter code: GLC) (formula:  $C_6H_{12}O_6$ ).



Mol	Chain	Residues	Atoms			ZeroOcc	AltConf
4	A	1	Total	C	O	0	0
			12	6	6		

- Molecule 5 is BETA-MERCAPTOETHANOL (three-letter code: BME) (formula:  $C_2H_6OS$ ).



Mol	Chain	Residues	Atoms				ZeroOcc	AltConf
5	A	1	Total	C	O	S	0	0
			4	2	1	1		

- Molecule 6 is MAGNESIUM ION (three-letter code: MG) (formula: Mg).

Mol	Chain	Residues	Atoms		ZeroOcc	AltConf
6	A	1	Total	Mg	0	0
			1	1		

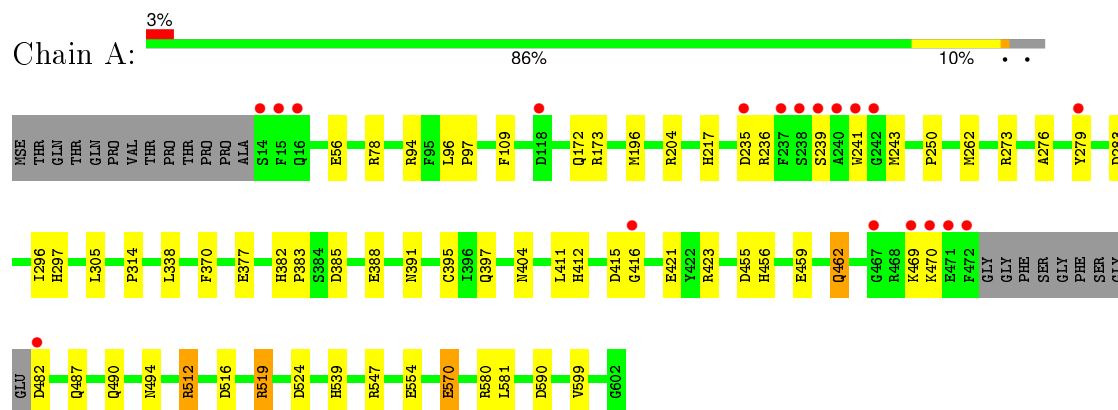
- Molecule 7 is water.

Mol	Chain	Residues	Atoms		ZeroOcc	AltConf
7	A	933	Total	O	0	0
			933	933		

### 3 Residue-property plots [i](#)

These plots are drawn for all protein, RNA and DNA chains in the entry. The first graphic for a chain summarises the proportions of errors displayed in the second graphic. The second graphic shows the sequence view annotated by issues in geometry and electron density. Residues are color-coded according to the number of geometric quality criteria for which they contain at least one outlier: green = 0, yellow = 1, orange = 2 and red = 3 or more. A red dot above a residue indicates a poor fit to the electron density ( $RSRZ > 2$ ). Stretches of 2 or more consecutive residues without any outlier are shown as a green connector. Residues present in the sample, but not in the model, are shown in grey.

#### • Molecule 1: MALTOOLIGOSYLTREHALOSE TREHALOHYDROLASE



## 4 Data and refinement statistics

Property	Value	Source
Space group	P 21 21 21	Depositor
Cell constants a, b, c, $\alpha$ , $\beta$ , $\gamma$	59.51Å 66.65Å 153.10Å 90.00° 90.00° 90.00°	Depositor
Resolution (Å)	20.00 – 1.55 19.67 – 1.55	Depositor EDS
% Data completeness (in resolution range)	99.9 (20.00-1.55) 99.9 (19.67-1.55)	Depositor EDS
$R_{merge}$	0.08	Depositor
$R_{sym}$	(Not available)	Depositor
$\langle I/\sigma(I) \rangle$ <sup>1</sup>	2.99 (at 1.55Å)	Xtriage
Refinement program	REFMAC 5.2.0003	Depositor
R, $R_{free}$	0.146 , 0.175 0.146 , 0.175	Depositor DCC
$R_{free}$ test set	3594 reflections (4.21%)	DCC
Wilson B-factor (Å <sup>2</sup> )	10.1	Xtriage
Anisotropy	0.056	Xtriage
Bulk solvent $k_{sol}$ (e/Å <sup>3</sup> ), $B_{sol}$ (Å <sup>2</sup> )	0.38 , 63.0	EDS
Estimated twinning fraction	No twinning to report.	Xtriage
L-test for twinning <sup>2</sup>	$\langle  L  \rangle = 0.49$ , $\langle L^2 \rangle = 0.32$	Xtriage
Outliers	0 of 88980 reflections	Xtriage
$F_o, F_c$ correlation	0.97	EDS
Total number of atoms	5869	wwPDB-VP
Average B, all atoms (Å <sup>2</sup> )	12.0	wwPDB-VP

Xtriage's analysis on translational NCS is as follows: *The largest off-origin peak in the Patterson function is 4.68% of the height of the origin peak. No significant pseudotranslation is detected.*

<sup>1</sup>Intensities estimated from amplitudes.

<sup>2</sup>Theoretical values of  $\langle |L| \rangle$ ,  $\langle L^2 \rangle$  for acentric reflections are 0.5, 0.375 respectively for untwinned datasets, and 0.333, 0.2 for perfectly twinned datasets.



## 5 Model quality

### 5.1 Standard geometry

Bond lengths and bond angles in the following residue types are not validated in this section: MG, GLC, TRE, TRS, BME

The Z score for a bond length (or angle) is the number of standard deviations the observed value is removed from the expected value. A bond length (or angle) with  $|Z| > 5$  is considered an outlier worth inspection. RMSZ is the root-mean-square of all Z scores of the bond lengths (or angles).

Mol	Chain	Bond lengths		Bond angles	
		RMSZ	$\# Z  > 5$	RMSZ	$\# Z  > 5$
1	A	1.06	6/4992 (0.1%)	0.99	17/6780 (0.3%)

Chiral center outliers are detected by calculating the chiral volume of a chiral center and verifying if the center is modelled as a planar moiety or with the opposite hand. A planarity outlier is detected by checking planarity of atoms in a peptide group, atoms in a mainchain group or atoms of a sidechain that are expected to be planar.

Mol	Chain	#Chirality outliers	#Planarity outliers
1	A	0	3

All (6) bond length outliers are listed below:

Mol	Chain	Res	Type	Atoms	Z	Observed(Å)	Ideal(Å)
1	A	570	GLU	CD-OE2	-42.15	0.79	1.25
1	A	469	LYS	CD-CE	12.70	1.82	1.51
1	A	519	ARG	CZ-NH1	-11.48	1.18	1.33
1	A	459	GLU	CG-CD	11.46	1.69	1.51
1	A	580	ARG	CZ-NH1	-6.00	1.25	1.33
1	A	470	LYS	CG-CD	5.21	1.70	1.52

All (17) bond angle outliers are listed below:

Mol	Chain	Res	Type	Atoms	Z	Observed(°)	Ideal(°)
1	A	580	ARG	NE-CZ-NH1	-23.32	108.64	120.30
1	A	570	GLU	OE1-CD-OE2	-14.75	105.60	123.30
1	A	580	ARG	NH1-CZ-NH2	11.28	131.81	119.40
1	A	462	GLN	OE1-CD-NE2	-8.03	103.42	121.90
1	A	470	LYS	CB-CG-CD	-7.31	92.60	111.60
1	A	423	ARG	NE-CZ-NH2	-6.17	117.21	120.30
1	A	570	GLU	CG-CD-OE2	-5.95	106.40	118.30

*Continued on next page...*

*Continued from previous page...*

Mol	Chain	Res	Type	Atoms	Z	Observed(°)	Ideal(°)
1	A	273	ARG	NE-CZ-NH2	-5.87	117.37	120.30
1	A	455	ASP	CB-CG-OD2	5.67	123.41	118.30
1	A	590	ASP	CB-CG-OD2	5.62	123.36	118.30
1	A	235	ASP	CB-CG-OD2	5.40	123.16	118.30
1	A	283	ASP	CB-CG-OD2	5.38	123.14	118.30
1	A	482	ASP	CB-CG-OD2	-5.24	113.59	118.30
1	A	94	ARG	NE-CZ-NH1	5.21	122.90	120.30
1	A	94	ARG	NE-CZ-NH2	-5.20	117.70	120.30
1	A	524	ASP	CB-CG-OD2	5.18	122.97	118.30
1	A	482	ASP	CB-CG-OD1	5.18	122.96	118.30

There are no chirality outliers.

All (3) planarity outliers are listed below:

Mol	Chain	Res	Type	Group
1	A	462	GLN	Sidechain
1	A	512[A]	ARG	Sidechain
1	A	570	GLU	Sidechain

## 5.2 Too-close contacts ⓘ

In the following table, the Non-H and H(model) columns list the number of non-hydrogen atoms and hydrogen atoms in the chain respectively. The H(added) column lists the number of hydrogen atoms added and optimized by MolProbity. The Clashes column lists the number of clashes within the asymmetric unit, whereas Symm-Clashes lists symmetry related clashes.

Mol	Chain	Non-H	H(model)	H(added)	Clashes	Symm-Clashes
1	A	4865	0	4598	55	0
2	A	8	0	12	5	0
3	A	46	0	44	5	0
4	A	12	0	12	1	0
5	A	4	0	5	1	0
6	A	1	0	0	0	0
7	A	933	0	0	24	1
All	All	5869	0	4671	57	1

The all-atom clashscore is defined as the number of clashes found per 1000 atoms (including hydrogen atoms). The all-atom clashscore for this structure is 6.

All (57) close contacts within the same asymmetric unit are listed below, sorted by their clash magnitude.

Atom-1	Atom-2	Interatomic distance (Å)	Clash overlap (Å)
1:A:395:CYS:SG	5:A:1607:BME:S2	2.31	1.29
1:A:239:SER:HB2	7:A:2473:HOH:O	1.50	1.09
1:A:404[A]:ASN:OD1	7:A:2678:HOH:O	1.70	1.08
1:A:196[B]:MSE:HE1	7:A:2091:HOH:O	1.49	1.08
1:A:296[B]:ILE:HD13	1:A:305:LEU:HD21	1.35	1.05
1:A:204:ARG:HG2	7:A:2404:HOH:O	1.65	0.96
1:A:56[A]:GLU:OE2	7:A:2123:HOH:O	1.85	0.93
1:A:172:GLN:OE1	7:A:2365:HOH:O	1.89	0.91
1:A:314:PRO:HG2	3:A:1606:TRE:O2P	1.71	0.89
1:A:239:SER:CB	7:A:2473:HOH:O	2.15	0.87
1:A:296[B]:ILE:CD1	1:A:305:LEU:HD21	2.05	0.85
1:A:314:PRO:HG2	3:A:1606:TRE:C2P	2.10	0.81
1:A:456:HIS:H	1:A:487:GLN:HE22	1.27	0.81
1:A:297[A]:HIS:NE2	7:A:2538:HOH:O	2.13	0.79
1:A:388:GLU:H	1:A:391:ASN:HD22	1.34	0.74
1:A:296[B]:ILE:HD12	1:A:305:LEU:HD11	1.74	0.70
1:A:314:PRO:HG2	3:A:1606:TRE:HC2P	1.77	0.66
1:A:338:LEU:O	2:A:1603:TRS:H21	1.96	0.66
1:A:217:HIS:CD2	1:A:241:TRP:HD1	2.15	0.65
1:A:415:ASP:HB3	7:A:2696:HOH:O	2.00	0.62
1:A:581[B]:LEU:CD2	1:A:599:VAL:CG2	2.78	0.61
1:A:421:GLU:OE2	2:A:1603:TRS:H22	2.01	0.60
1:A:516:ASP:OD1	1:A:519:ARG:NH2	2.38	0.57
2:A:1603:TRS:H31	7:A:2911:HOH:O	2.05	0.55
1:A:388:GLU:H	1:A:391:ASN:ND2	2.01	0.55
1:A:78:ARG:CZ	1:A:97:PRO:HG2	2.38	0.54
4:A:1605:GLC:H3	7:A:2655:HOH:O	2.08	0.54
1:A:204:ARG:CD	7:A:2404:HOH:O	2.56	0.53
1:A:196[B]:MSE:CE	7:A:2091:HOH:O	2.26	0.53
1:A:236:ARG:NH2	7:A:2466:HOH:O	2.38	0.53
1:A:314:PRO:CG	3:A:1606:TRE:HC2P	2.39	0.52
1:A:296[B]:ILE:HD13	1:A:305:LEU:CD2	2.24	0.52
1:A:512[A]:ARG:HD3	7:A:2780:HOH:O	2.10	0.52
1:A:382:HIS:HD2	7:A:2932:HOH:O	1.92	0.51
1:A:262[B]:MSE:SE	1:A:262[B]:MSE:C	2.99	0.51
1:A:397:GLN:NE2	1:A:411:LEU:H	2.09	0.50
1:A:412:HIS:H	1:A:412:HIS:CD2	2.29	0.50
1:A:539:HIS:HD2	7:A:2628:HOH:O	1.95	0.49
1:A:250:PRO:HG3	7:A:2482:HOH:O	2.11	0.49
1:A:416[A]:GLY:O	2:A:1603:TRS:H11	2.12	0.49
1:A:109:PHE:HD1	1:A:196[A]:MSE:HE1	1.78	0.49
1:A:490:GLN:NE2	1:A:494[A]:ASN:OD1	2.33	0.48

Continued on next page...

Continued from previous page...

Atom-1	Atom-2	Interatomic distance (Å)	Clash overlap (Å)
1:A:236:ARG:HD2	7:A:2518:HOH:O	2.14	0.47
1:A:370:PHE:CZ	1:A:377:GLU:HB3	2.49	0.47
1:A:96:LEU:HD21	7:A:2194:HOH:O	2.15	0.46
1:A:581[B]:LEU:HD21	1:A:599:VAL:HG23	1.97	0.45
1:A:404[A]:ASN:ND2	7:A:2675:HOH:O	2.39	0.43
1:A:397:GLN:HE22	1:A:411:LEU:H	1.67	0.43
1:A:383:PRO:HG2	3:A:1606:TRE:H6P1	2.00	0.42
1:A:338:LEU:O	2:A:1603:TRS:C2	2.66	0.42
1:A:243:MSE:N	7:A:2475:HOH:O	2.51	0.42
1:A:581[B]:LEU:CD2	1:A:599:VAL:HG23	2.49	0.42
1:A:217:HIS:CD2	1:A:241:TRP:CD1	3.03	0.42
1:A:276:ALA:HB1	1:A:279:TYR:HD2	1.86	0.41
1:A:547:ARG:HE	1:A:554[B]:GLU:CD	2.23	0.41
1:A:236:ARG:CD	7:A:2518:HOH:O	2.67	0.41
1:A:204:ARG:CG	7:A:2404:HOH:O	2.40	0.40

All (1) symmetry-related close contacts are listed below. The label for Atom-2 includes the symmetry operator and encoded unit-cell translations to be applied.

Atom-1	Atom-2	Interatomic distance (Å)	Clash overlap (Å)
7:A:2274:HOH:O	7:A:2528:HOH:O[4_555]	2.16	0.04

## 5.3 Torsion angles [i](#)

### 5.3.1 Protein backbone [i](#)

In the following table, the Percentiles column shows the percent Ramachandran outliers of the chain as a percentile score with respect to all X-ray entries followed by that with respect to entries of similar resolution.

The Analysed column shows the number of residues for which the backbone conformation was analysed, and the total number of residues.

Mol	Chain	Analysed	Favoured	Allowed	Outliers	Percentiles
1	A	607/602 (101%)	603 (99%)	4 (1%)	0	<b>100</b> <b>100</b>

There are no Ramachandran outliers to report.

### 5.3.2 Protein sidechains [i](#)

In the following table, the Percentiles column shows the percent sidechain outliers of the chain as a percentile score with respect to all X-ray entries followed by that with respect to entries of similar resolution.

The Analysed column shows the number of residues for which the sidechain conformation was analysed, and the total number of residues.

Mol	Chain	Analysed	Rotameric	Outliers	Percentiles	
1	A	497/475 (105%)	495 (100%)	2 (0%)	93	84

All (2) residues with a non-rotameric sidechain are listed below:

Mol	Chain	Res	Type
1	A	173	ARG
1	A	385	ASP

Some sidechains can be flipped to improve hydrogen bonding and reduce clashes. All (8) such sidechains are listed below:

Mol	Chain	Res	Type
1	A	172	GLN
1	A	342	GLN
1	A	382	HIS
1	A	391	ASN
1	A	397	GLN
1	A	412	HIS
1	A	487	GLN
1	A	539	HIS

### 5.3.3 RNA [i](#)

There are no RNA molecules in this entry.

## 5.4 Non-standard residues in protein, DNA, RNA chains [i](#)

There are no non-standard protein/DNA/RNA residues in this entry.

## 5.5 Carbohydrates [i](#)

There are no carbohydrates in this entry.

## 5.6 Ligand geometry

Of 6 ligands modelled in this entry, 1 is monoatomic - leaving 5 for Mogul analysis.

In the following table, the Counts columns list the number of bonds (or angles) for which Mogul statistics could be retrieved, the number of bonds (or angles) that are observed in the model and the number of bonds (or angles) that are defined in the chemical component dictionary. The Link column lists molecule types, if any, to which the group is linked. The Z score for a bond length (or angle) is the number of standard deviations the observed value is removed from the expected value. A bond length (or angle) with  $|Z| > 2$  is considered an outlier worth inspection. RMSZ is the root-mean-square of all Z scores of the bond lengths (or angles).

Mol	Type	Chain	Res	Link	Bond lengths			Bond angles		
					Counts	RMSZ	# Z  > 2	Counts	RMSZ	# Z  > 2
2	TRS	A	1603	1	7,7,7	1.06	0	9,9,9	1.67	2 (22%)
3	TRE	A	1604	-	24,24,24	0.75	0	35,35,35	1.19	2 (5%)
4	GLC	A	1605	-	12,12,12	0.73	0	17,17,17	2.37	4 (23%)
3	TRE	A	1606	-	24,24,24	0.85	0	35,35,35	1.01	1 (2%)
5	BME	A	1607	-	3,3,3	0.33	0	2,2,2	0.06	0

In the following table, the Chirals column lists the number of chiral outliers, the number of chiral centers analysed, the number of these observed in the model and the number defined in the chemical component dictionary. Similar counts are reported in the Torsion and Rings columns. '-' means no outliers of that kind were identified.

Mol	Type	Chain	Res	Link	Chirals	Torsions	Rings
2	TRS	A	1603	1	-	0/9/9/9	0/0/0/0
3	TRE	A	1604	-	-	0/8/48/48	0/2/2/2
4	GLC	A	1605	-	1/1/5/5	0/2/22/22	0/1/1/1
3	TRE	A	1606	-	-	0/8/48/48	0/2/2/2
5	BME	A	1607	-	-	0/1/1/1	0/0/0/0

There are no bond length outliers.

All (9) bond angle outliers are listed below:

Mol	Chain	Res	Type	Atoms	Z	Observed(°)	Ideal(°)
4	A	1605	GLC	C1-C2-C3	-5.97	101.56	110.43
4	A	1605	GLC	C1-O5-C5	-5.54	103.22	113.47
3	A	1604	TRE	C1P-O1-C1	-3.79	108.44	114.39
3	A	1606	TRE	C1P-O1-C1	-3.39	109.06	114.39
3	A	1604	TRE	O5-C5-C4	-2.71	104.59	109.68
2	A	1603	TRS	O2-C2-C	-2.55	106.03	111.18
4	A	1605	GLC	O4-C4-C3	-2.08	105.66	110.34
4	A	1605	GLC	O1-C1-C2	2.10	114.83	109.21

*Continued on next page...*

*Continued from previous page...*

Mol	Chain	Res	Type	Atoms	Z	Observed(°)	Ideal(°)
2	A	1603	TRS	C1-C-N	2.69	112.98	108.09

All (1) chirality outliers are listed below:

Mol	Chain	Res	Type	Atom
4	A	1605	GLC	C1

There are no torsion outliers.

There are no ring outliers.

4 monomers are involved in 12 short contacts:

Mol	Chain	Res	Type	Clashes	Symm-Clashes
2	A	1603	TRS	5	0
4	A	1605	GLC	1	0
3	A	1606	TRE	5	0
5	A	1607	BME	1	0

## 5.7 Other polymers [i](#)

There are no such residues in this entry.

## 5.8 Polymer linkage issues [i](#)

There are no chain breaks in this entry.

## 6 Fit of model and data ⓘ

### 6.1 Protein, DNA and RNA chains ⓘ

In the following table, the column labelled ‘#RSRZ> 2’ contains the number (and percentage) of RSRZ outliers, followed by percent RSRZ outliers for the chain as percentile scores relative to all X-ray entries and entries of similar resolution. The OWAB column contains the minimum, median, 95<sup>th</sup> percentile and maximum values of the occupancy-weighted average B-factor per residue. The column labelled ‘Q< 0.9’ lists the number of (and percentage) of residues with an average occupancy less than 0.9.

Mol	Chain	Analysed	<RSRZ>	#RSRZ>2	OWAB(Å <sup>2</sup> )	Q<0.9
1	A	572/602 (95%)	-0.19	19 (3%) 50 53	5, 9, 20, 39	39 (6%)

All (19) RSRZ outliers are listed below:

Mol	Chain	Res	Type	RSRZ
1	A	240	ALA	8.9
1	A	241	TRP	7.0
1	A	239	SER	5.3
1	A	472	PHE	5.1
1	A	482	ASP	3.9
1	A	470	LYS	3.7
1	A	242	GLY	3.3
1	A	15	PHE	2.8
1	A	14	SER	2.8
1	A	237	PHE	2.8
1	A	16	GLN	2.7
1	A	469	LYS	2.7
1	A	238	SER	2.6
1	A	118	ASP	2.4
1	A	416[A]	GLY	2.4
1	A	471	GLU	2.3
1	A	279	TYR	2.2
1	A	235	ASP	2.1
1	A	467	GLY	2.0

### 6.2 Non-standard residues in protein, DNA, RNA chains ⓘ

There are no non-standard protein/DNA/RNA residues in this entry.



### 6.3 Carbohydrates [i](#)

There are no carbohydrates in this entry.

### 6.4 Ligands [i](#)

In the following table, the Atoms column lists the number of modelled atoms in the group and the number defined in the chemical component dictionary. LLDF column lists the quality of electron density of the group with respect to its neighbouring residues in protein, DNA or RNA chains. The B-factors column lists the minimum, median, 95<sup>th</sup> percentile and maximum values of B factors of atoms in the group. The column labelled 'Q< 0.9' lists the number of atoms with occupancy less than 0.9.

Mol	Type	Chain	Res	Atoms	RSCC	RSR	LLDF	B-factors(Å <sup>2</sup> )	Q<0.9
3	TRE	A	1606	23/23	0.82	0.22	6.67	12,23,26,27	23
4	GLC	A	1605	12/12	0.81	0.22	4.68	17,21,25,27	0
2	TRS	A	1603	8/8	0.75	0.26	3.25	21,23,24,27	2
5	BME	A	1607	4/4	0.97	0.10	2.41	8,8,9,11	2
6	MG	A	1608	1/1	0.98	0.18	2.27	16,16,16,16	1
3	TRE	A	1604	23/23	0.98	0.06	-0.30	4,7,14,18	0

### 6.5 Other polymers [i](#)

There are no such residues in this entry.