



wwPDB X-ray Structure Validation Summary Report ⓘ

Feb 1, 2016 – 12:51 AM GMT

PDB ID : 2BYB
Title : HUMAN MONOAMINE OXIDASE B IN COMPLEX WITH DEPRENYL
Authors : Binda, C.; De Colibus, L.; Edmondson, D.E.; Mattevi, A.
Deposited on : 2005-07-29
Resolution : 2.20 Å(reported)

This is a wwPDB X-ray Structure Validation Summary Report for a publicly released PDB entry.
We welcome your comments at validation@mail.wwpdb.org
A user guide is available at
<http://wwpdb.org/validation/2016/XrayValidationReportHelp>
with specific help available everywhere you see the ⓘ symbol.

The following versions of software and data (see [references ⓘ](#)) were used in the production of this report:

MolProbity : 4.02b-467
Mogul : 1.7 (RC4), CSD as536be (2015)
Xtriage (Phenix) : 1.9-1692
EDS : rb-20026688
Percentile statistics : 20151230.v01 (using entries in the PDB archive December 30th 2015)
Refmac : 5.8.0135
CCP4 : 6.5.0
Ideal geometry (proteins) : Engh & Huber (2001)
Ideal geometry (DNA, RNA) : Parkinson et al. (1996)
Validation Pipeline (wwPDB-VP) : trunk26865

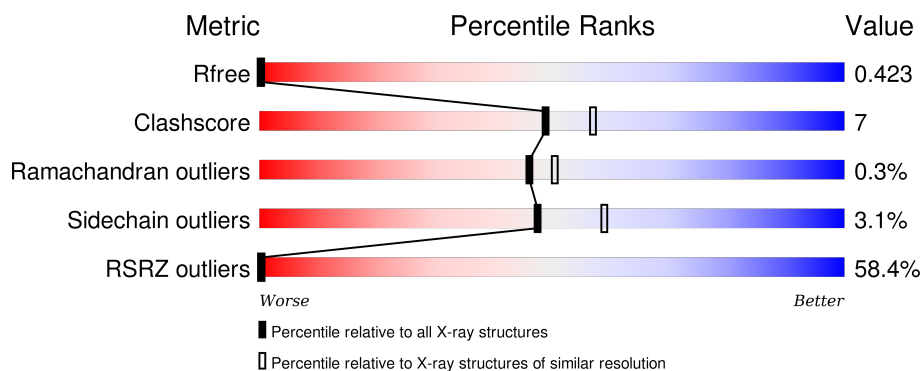
1 Overall quality at a glance

The following experimental techniques were used to determine the structure:

X-RAY DIFFRACTION

The reported resolution of this entry is 2.20 Å.

Percentile scores (ranging between 0-100) for global validation metrics of the entry are shown in the following graphic. The table shows the number of entries on which the scores are based.



Metric	Whole archive (#Entries)	Similar resolution (#Entries, resolution range(Å))
R_{free}	91344	3774 (2.20-2.20)
Clashscore	102246	4477 (2.20-2.20)
Ramachandran outliers	100387	4404 (2.20-2.20)
Sidechain outliers	100360	4405 (2.20-2.20)
RSRZ outliers	91569	3781 (2.20-2.20)

The table below summarises the geometric issues observed across the polymeric chains and their fit to the electron density. The red, orange, yellow and green segments on the lower bar indicate the fraction of residues that contain outliers for ≥ 3 , 2, 1 and 0 types of geometric quality criteria. A grey segment represents the fraction of residues that are not modelled. The numeric value for each fraction is indicated below the corresponding segment, with a dot representing fractions $\leq 5\%$. The upper red bar (where present) indicates the fraction of residues that have poor fit to the electron density. The numeric value is given above the bar.

Mol	Chain	Length	Quality of chain
1	A	520	<div> <div>55%</div> <div>50%44%••</div> </div>
1	B	520	<div> <div>57%</div> <div>75%19%•5%</div> </div>

The following table lists non-polymeric compounds, carbohydrate monomers and non-standard residues in protein, DNA, RNA chains that are outliers for geometric or electron-density-fit criteria:

Mol	Type	Chain	Res	Chirality	Geometry	Clashes	Electron density
2	FAD	A	600	-	-	X	-
3	DPK	A	601	-	-	-	X
3	DPK	B	601	-	-	-	X

2 Entry composition [i](#)

There are 4 unique types of molecules in this entry. The entry contains 8534 atoms, of which 0 are hydrogens and 0 are deuteriums.

In the tables below, the ZeroOcc column contains the number of atoms modelled with zero occupancy, the AltConf column contains the number of residues with at least one atom in alternate conformation and the Trace column contains the number of residues modelled with at most 2 atoms.

- Molecule 1 is a protein called AMINE OXIDASE [FLAVIN-CONTAINING] B.

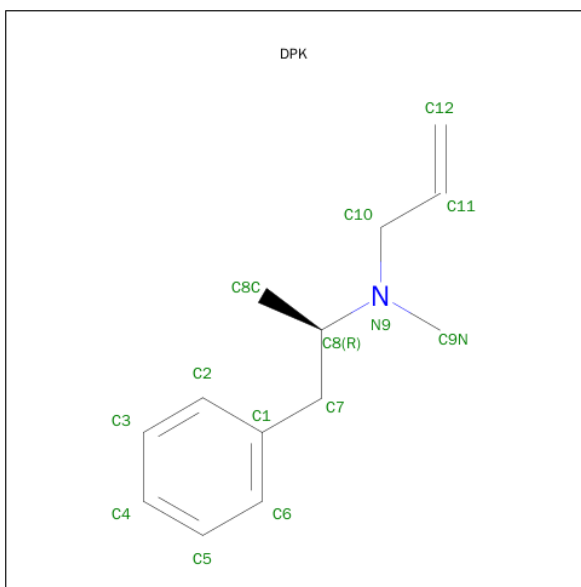
Mol	Chain	Residues	Atoms					ZeroOcc	AltConf	Trace
1	A	499	Total	C	N	O	S	0	0	0
			3971	2538	681	728	24			
1	B	494	Total	C	N	O	S	0	0	0
			3940	2519	676	721	24			

- Molecule 2 is FLAVIN-ADENINE DINUCLEOTIDE (three-letter code: FAD) (formula: $C_{27}H_{33}N_9O_{15}P_2$).



Mol	Chain	Residues	Atoms					ZeroOcc	AltConf
2	A	1	Total	C	N	O	P	0	0
			53	27	9	15	2		
2	B	1	Total	C	N	O	P	0	0
			53	27	9	15	2		

- Molecule 3 is DEPRENYL (three-letter code: DPK) (formula: $C_{13}H_{19}N$).



Mol	Chain	Residues	Atoms			ZeroOcc	AltConf
3	A	1	Total	C	N	0	0
			14	13	1		
3	B	1	Total	C	N	0	0
			14	13	1		

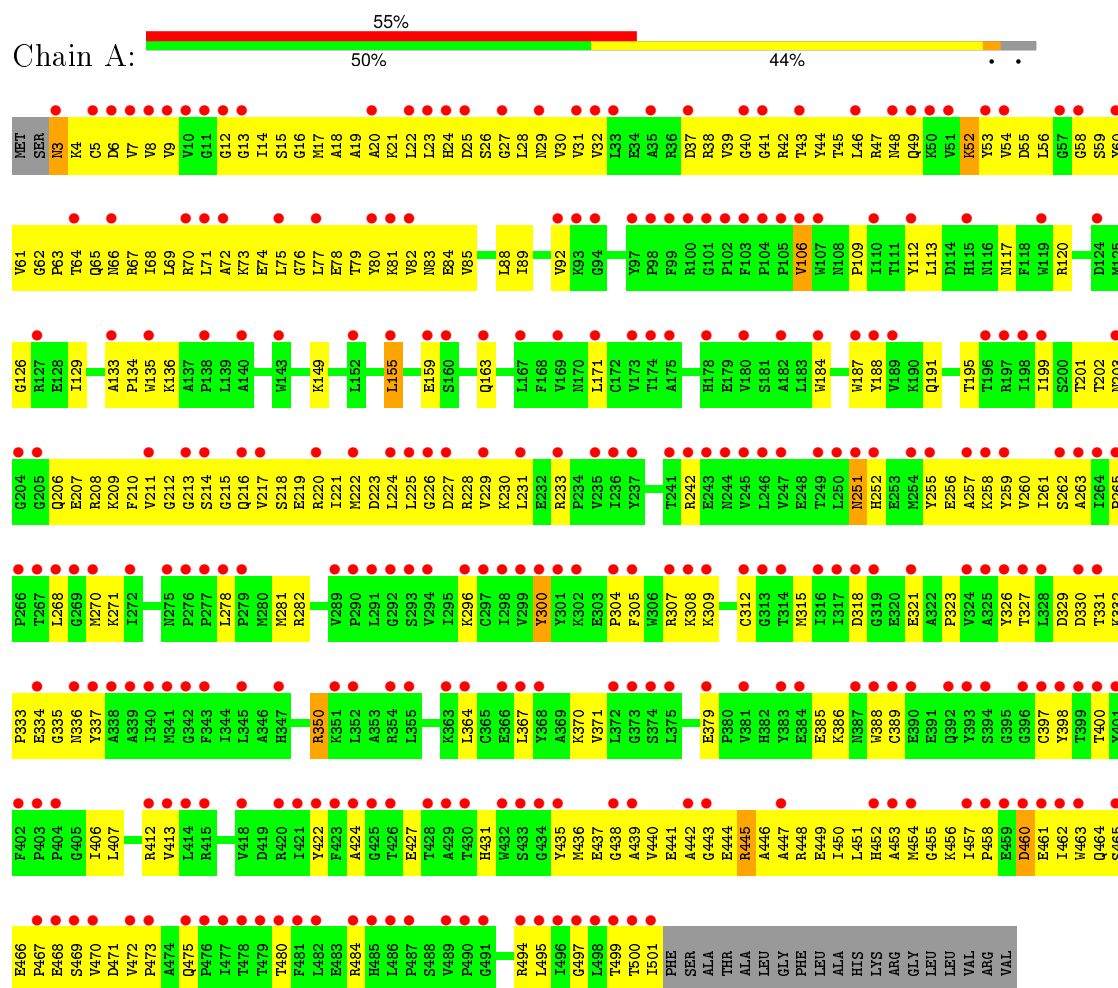
- Molecule 4 is water.

Mol	Chain	Residues	Atoms		ZeroOcc	AltConf
4	A	233	Total	O	0	0
			233	233		
4	B	256	Total	O	0	0
			256	256		

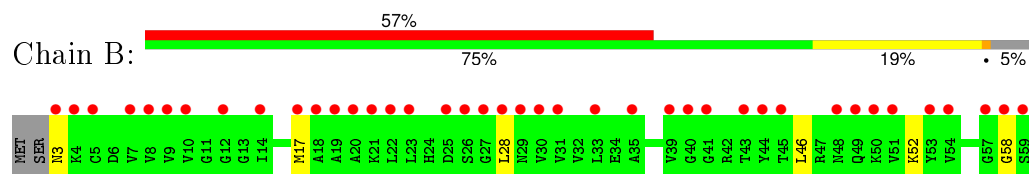
3 Residue-property plots

These plots are drawn for all protein, RNA and DNA chains in the entry. The first graphic for a chain summarises the proportions of errors displayed in the second graphic. The second graphic shows the sequence view annotated by issues in geometry and electron density. Residues are color-coded according to the number of geometric quality criteria for which they contain at least one outlier: green = 0, yellow = 1, orange = 2 and red = 3 or more. A red dot above a residue indicates a poor fit to the electron density ($RSRZ > 2$). Stretches of 2 or more consecutive residues without any outlier are shown as a green connector. Residues present in the sample, but not in the model, are shown in grey.

• Molecule 1: AMINE OXIDASE [FLAVIN-CONTAINING] B



• Molecule 1: AMINE OXIDASE [FLAVIN-CONTAINING] B



A474	Q475	P476	I477	T478	T479	T480	F481	L482	E483	R484	H485	V489	P490	G491	L492	L493	R494	L495	I496	GLY	LEU	THR	THR	THR	ILE	PHE	SER	ALA	ALA	THR	ALA	LEU	LEU	GLY	PHE	LEU	LEU	ALA	HIS	LYS	ARG	GLY	LEU	LEU	VAL	ARG	VAL											
G411	R412	V413	I414	R415	Q416	P417	V418	D419	R420	I421	Y422	F423	A424	G425	T426	E427	T428	A429	T430	H431	W432	S433	G434	Y435	V440	E441	A442	G443	E444	R445	A446	A447	R448	E449	I450	L451	H452	A453	M454	G455	K456	I457	P458	E459	D460	E461	I462	W463	Q464	S465	E466	P467	E468	S469	V470	D471	V472	P473
I340	R341	F342	F343	I344	I345	I346	H347	K351	L352	A353	R354	L355	E358	L361	K362	K363	I364	L367	V368	A369	L372	E376	A377	I378	E379	P380	V381	H382	V383	E384	E385	K386	N387	W388	Q392	Y393	S394	G395	G396	C397	Y398	T399	T400	V401	F402	P403	I406	L407	T408	Q409	Y410							
G269	M270	K271	I272	H273	F274	N275	M280	M281	R282	N283	I286	L291	V294	I295	K296	C297	I298	V299	Y300	Y301	K302	E303	P304	F305	W306	R307	K308	K309	D310	Y311	C312	G313	I317	G319	E320	E321	A322	P323	V324	A325	H252	Y326	T327	L328	D329	D330	T331	K332	P333	E334	G335	N336	Y337					
G204	R208	K209	F210	V211	G212	T214	M215	S214	G215	Q216	V217	R220	Y221	D222	L224	L225	G226	D227	R228	V229	K230	E231	R232	R233	P234	V235	I236	G237	D238	D239	Q240	T241	R242	E243	M244	V245	L246	V247	E248	T249	F250	N251	H252	Y255	Y256	K258	Y259	V260	I261	S262	A263	L264	P265	Y268				
L139	A140	W143	D144	M145	M146	T147	K148	K149	E150	L151	L152	D153	K154	L155	C156	T157	E159	K162	Q163	L164	A165	T166	F167	F168	V169	M170	L171	G172	V173	T174	A175	E176	T177	H178	E179	V180	S181	A182	L183	W184	F185	L186	W187	Y188	Y189	K190	Q191	C192	E193	G194	T195	I198	I199	S200	T201			
M66	R67	I68	L69	R70	L71	A72	K73	L77	Y80	K81	V82	M83	E84	V85	L88	V92	K93	G94	K95	S96	Y97	P98	F99	R100	G101	P102	F103	P104	P105	V106	W107	P108	P109	I110	T111	Y112	N116	N117	F118	W119	R120	T121	M122	G126	R127	E128	I129	A133	K136	A137	P138							

4 Data and refinement statistics

Property	Value	Source
Space group	C 2 2 21	Depositor
Cell constants a, b, c, α , β , γ	132.84Å 225.84Å 85.68Å 90.00° 90.00° 90.00°	Depositor
Resolution (Å)	15.00 – 2.20 29.86 – 2.00	Depositor EDS
% Data completeness (in resolution range)	95.0 (15.00-2.20) 95.7 (29.86-2.00)	Depositor EDS
R_{merge}	0.09	Depositor
R_{sym}	(Not available)	Depositor
$\langle I/\sigma(I) \rangle$ ¹	1.72 (at 2.00Å)	Xtriage
Refinement program	REFMAC 5.2.0005	Depositor
R, R_{free}	0.237 , 0.299 0.399 , 0.423	Depositor DCC
R_{free} test set	1606 reflections (2.65%)	DCC
Wilson B-factor (Å ²)	25.8	Xtriage
Anisotropy	0.758	Xtriage
Bulk solvent k_{sol} (e/Å ³), B_{sol} (Å ²)	0.35 , 46.9	EDS
Estimated twinning fraction	0.006 for 1/2*h-1/2*k,-3/2*h-1/2*k,-l 0.021 for 1/2*h+1/2*k,3/2*h-1/2*k,-l	Xtriage
L-test for twinning ²	$\langle L \rangle = 0.47$, $\langle L^2 \rangle = 0.30$	Xtriage
Outliers	23 of 83353 reflections (0.028%)	Xtriage
F_o, F_c correlation	0.74	EDS
Total number of atoms	8534	wwPDB-VP
Average B, all atoms (Å ²)	32.0	wwPDB-VP

Xtriage's analysis on translational NCS is as follows: *The largest off-origin peak in the Patterson function is 4.11% of the height of the origin peak. No significant pseudotranslation is detected.*

¹ Intensities estimated from amplitudes.

² Theoretical values of $\langle |L| \rangle$, $\langle L^2 \rangle$ for acentric reflections are 0.5, 0.375 respectively for untwinned datasets, and 0.333, 0.2 for perfectly twinned datasets.

5 Model quality [i](#)

5.1 Standard geometry [i](#)

Bond lengths and bond angles in the following residue types are not validated in this section: DPK, FAD

The Z score for a bond length (or angle) is the number of standard deviations the observed value is removed from the expected value. A bond length (or angle) with $|Z| > 5$ is considered an outlier worth inspection. RMSZ is the root-mean-square of all Z scores of the bond lengths (or angles).

Mol	Chain	Bond lengths		Bond angles	
		RMSZ	$\# Z > 5$	RMSZ	$\# Z > 5$
1	A	0.79	1/4068 (0.0%)	0.80	2/5522 (0.0%)
1	B	0.88	3/4037 (0.1%)	0.86	5/5479 (0.1%)
All	All	0.84	4/8105 (0.0%)	0.83	7/11001 (0.1%)

All (4) bond length outliers are listed below:

Mol	Chain	Res	Type	Atoms	Z	Observed(Å)	Ideal(Å)
1	B	156	CYS	CB-SG	-6.55	1.71	1.82
1	B	176	GLU	CB-CG	5.24	1.62	1.52
1	B	393	TYR	CD1-CE1	5.11	1.47	1.39
1	A	300	TYR	CD2-CE2	5.03	1.46	1.39

The worst 5 of 7 bond angle outliers are listed below:

Mol	Chain	Res	Type	Atoms	Z	Observed(°)	Ideal(°)
1	B	144	ASP	CB-CG-OD2	-6.15	112.77	118.30
1	B	144	ASP	CB-CG-OD1	5.88	123.60	118.30
1	A	445	ARG	NE-CZ-NH2	-5.81	117.40	120.30
1	B	310	ASP	CB-CG-OD1	5.71	123.44	118.30
1	B	448	ARG	NE-CZ-NH2	-5.24	117.68	120.30

There are no chirality outliers.

There are no planarity outliers.

5.2 Too-close contacts [i](#)

In the following table, the Non-H and H(model) columns list the number of non-hydrogen atoms and hydrogen atoms in the chain respectively. The H(added) column lists the number of hydrogen atoms added and optimized by MolProbity. The Clashes column lists the number of clashes within

the asymmetric unit, whereas Symm-Clashes lists symmetry related clashes.

Mol	Chain	Non-H	H(model)	H(added)	Clashes	Symm-Clashes
1	A	3971	0	3967	59	1344
1	B	3940	0	3937	60	22
2	A	53	0	29	2	60
2	B	53	0	29	2	0
3	A	14	0	17	0	0
3	B	14	0	17	1	0
4	A	233	0	0	7	132
4	B	256	0	0	16	3
All	All	8534	0	7996	116	1369

The all-atom clashscore is defined as the number of clashes found per 1000 atoms (including hydrogen atoms). The all-atom clashscore for this structure is 7.

The worst 5 of 116 close contacts within the same asymmetric unit are listed below, sorted by their clash magnitude.

Atom-1	Atom-2	Interatomic distance (Å)	Clash overlap (Å)
1:B:464:GLN:NE2	4:B:2244:HOH:O	1.79	1.14
1:B:117:ASN:HD22	1:B:120:ARG:HH21	1.12	0.96
1:A:92:VAL:HG22	1:A:318:ASP:OD2	1.75	0.84
1:B:414:LEU:HD12	4:B:2217:HOH:O	1.78	0.83
1:A:117:ASN:HD22	1:A:120:ARG:HH21	1.29	0.80

The worst 5 of 1369 symmetry-related close contacts are listed below. The label for Atom-2 includes the symmetry operator and encoded unit-cell translations to be applied.

Atom-1	Atom-2	Interatomic distance (Å)	Clash overlap (Å)
1:A:67:ARG:NE	1:A:222:MET:CB[3_655]	0.21	1.99
1:A:76:GLY:C	2:A:600:FAD:N1[3_655]	0.29	1.91
1:A:223:ASP:O	1:A:441:GLU:OE2[3_655]	0.32	1.88
1:A:228:ARG:CB	1:A:462:ILE:O[3_655]	0.37	1.83
1:A:223:ASP:CA	1:A:441:GLU:OE1[3_655]	0.37	1.83

5.3 Torsion angles ⓘ

5.3.1 Protein backbone ⓘ

In the following table, the Percentiles column shows the percent Ramachandran outliers of the chain as a percentile score with respect to all X-ray entries followed by that with respect to entries of similar resolution.

The Analysed column shows the number of residues for which the backbone conformation was analysed, and the total number of residues.

Mol	Chain	Analysed	Favoured	Allowed	Outliers	Percentiles	
1	A	497/520 (96%)	476 (96%)	20 (4%)	1 (0%)	52	59
1	B	492/520 (95%)	470 (96%)	20 (4%)	2 (0%)	39	42
All	All	989/1040 (95%)	946 (96%)	40 (4%)	3 (0%)	46	50

All (3) Ramachandran outliers are listed below:

Mol	Chain	Res	Type
1	B	52	LYS
1	A	52	LYS
1	B	460	ASP

5.3.2 Protein sidechains ⓘ

In the following table, the Percentiles column shows the percent sidechain outliers of the chain as a percentile score with respect to all X-ray entries followed by that with respect to entries of similar resolution.

The Analysed column shows the number of residues for which the sidechain conformation was analysed, and the total number of residues.

Mol	Chain	Analysed	Rotameric	Outliers	Percentiles	
1	A	427/444 (96%)	413 (97%)	14 (3%)	45	56
1	B	424/444 (96%)	412 (97%)	12 (3%)	51	63
All	All	851/888 (96%)	825 (97%)	26 (3%)	47	59

5 of 26 residues with a non-rotameric sidechain are listed below:

Mol	Chain	Res	Type
1	A	460	ASP
1	B	3	ASN
1	B	460	ASP
1	A	494	ARG
1	A	495	LEU

Some sidechains can be flipped to improve hydrogen bonding and reduce clashes. 5 of 6 such sidechains are listed below:

Mol	Chain	Res	Type
1	A	431	HIS
1	B	431	HIS
1	B	117	ASN
1	A	251	ASN
1	B	251	ASN

5.3.3 RNA [i](#)

There are no RNA molecules in this entry.

5.4 Non-standard residues in protein, DNA, RNA chains [i](#)

There are no non-standard protein/DNA/RNA residues in this entry.

5.5 Carbohydrates [i](#)

There are no carbohydrates in this entry.

5.6 Ligand geometry [i](#)

4 ligands are modelled in this entry.

In the following table, the Counts columns list the number of bonds (or angles) for which Mogul statistics could be retrieved, the number of bonds (or angles) that are observed in the model and the number of bonds (or angles) that are defined in the chemical component dictionary. The Link column lists molecule types, if any, to which the group is linked. The Z score for a bond length (or angle) is the number of standard deviations the observed value is removed from the expected value. A bond length (or angle) with $|Z| > 2$ is considered an outlier worth inspection. RMSZ is the root-mean-square of all Z scores of the bond lengths (or angles).

Mol	Type	Chain	Res	Link	Bond lengths			Bond angles		
					Counts	RMSZ	$\# Z > 2$	Counts	RMSZ	$\# Z > 2$
2	FAD	A	600	1,3	48,58,58	1.61	7 (14%)	54,89,89	2.39	11 (20%)
3	DPK	A	601	2	14,14,14	0.54	0	15,17,17	2.26	4 (26%)
2	FAD	B	600	1,3	48,58,58	1.42	9 (18%)	54,89,89	2.45	12 (22%)
3	DPK	B	601	2	14,14,14	0.61	0	15,17,17	2.35	4 (26%)

In the following table, the Chirals column lists the number of chiral outliers, the number of chiral centers analysed, the number of these observed in the model and the number defined in the chemical component dictionary. Similar counts are reported in the Torsion and Rings columns. '-' means no outliers of that kind were identified.

Mol	Type	Chain	Res	Link	Chirals	Torsions	Rings
2	FAD	A	600	1,3	-	0/30/50/50	0/6/6/6
3	DPK	A	601	2	-	1/11/11/11	0/1/1/1
2	FAD	B	600	1,3	-	0/30/50/50	0/6/6/6
3	DPK	B	601	2	-	1/11/11/11	0/1/1/1

The worst 5 of 16 bond length outliers are listed below:

Mol	Chain	Res	Type	Atoms	Z	Observed(Å)	Ideal(Å)
2	B	600	FAD	O4B-C4B	-2.34	1.39	1.45
2	A	600	FAD	C10-N10	-2.28	1.36	1.39
2	B	600	FAD	C9A-N10	2.03	1.41	1.38
2	B	600	FAD	C5'-C4'	2.13	1.54	1.51
2	B	600	FAD	C10-N1	2.13	1.39	1.35

The worst 5 of 31 bond angle outliers are listed below:

Mol	Chain	Res	Type	Atoms	Z	Observed(°)	Ideal(°)
2	B	600	FAD	N3A-C2A-N1A	-12.64	119.22	128.89
2	A	600	FAD	N3A-C2A-N1A	-10.17	121.11	128.89
2	A	600	FAD	C4X-C4-N3	-4.85	116.96	123.59
2	A	600	FAD	C4A-C5A-N7A	-3.84	105.94	109.48
2	B	600	FAD	C9A-C5X-N5	-3.79	116.75	122.36

There are no chirality outliers.

All (2) torsion outliers are listed below:

Mol	Chain	Res	Type	Atoms
3	A	601	DPK	C11-C10-N9-C9N
3	B	601	DPK	C11-C10-N9-C9N

There are no ring outliers.

3 monomers are involved in 65 short contacts:

Mol	Chain	Res	Type	Clashes	Symm-Clashes
2	A	600	FAD	2	60
2	B	600	FAD	2	0
3	B	601	DPK	1	0

5.7 Other polymers ⓘ

There are no such residues in this entry.

5.8 Polymer linkage issues ⓘ

There are no chain breaks in this entry.

6 Fit of model and data [i](#)

6.1 Protein, DNA and RNA chains [i](#)

In the following table, the column labelled ‘#RSRZ> 2’ contains the number (and percentage) of RSRZ outliers, followed by percent RSRZ outliers for the chain as percentile scores relative to all X-ray entries and entries of similar resolution. The OWAB column contains the minimum, median, 95th percentile and maximum values of the occupancy-weighted average B-factor per residue. The column labelled ‘Q< 0.9’ lists the number of (and percentage) of residues with an average occupancy less than 0.9.

Mol	Chain	Analysed	<RSRZ>	#RSRZ>2	OWAB(Å ²)	Q<0.9
1	A	499/520 (95%)	2.56	284 (56%) 0 0	24, 31, 46, 64	0
1	B	494/520 (95%)	2.63	296 (59%) 0 0	23, 31, 42, 60	0
All	All	993/1040 (95%)	2.59	580 (58%) 0 0	23, 31, 44, 64	0

The worst 5 of 580 RSRZ outliers are listed below:

Mol	Chain	Res	Type	RSRZ
1	B	495	LEU	14.6
1	B	212	GLY	12.7
1	B	496	ILE	12.1
1	B	244	ASN	11.8
1	A	13	GLY	10.5

6.2 Non-standard residues in protein, DNA, RNA chains [i](#)

There are no non-standard protein/DNA/RNA residues in this entry.

6.3 Carbohydrates [i](#)

There are no carbohydrates in this entry.

6.4 Ligands [i](#)

In the following table, the Atoms column lists the number of modelled atoms in the group and the number defined in the chemical component dictionary. LLDF column lists the quality of electron density of the group with respect to its neighbouring residues in protein, DNA or RNA chains. The B-factors column lists the minimum, median, 95th percentile and maximum values of B factors of atoms in the group. The column labelled ‘Q< 0.9’ lists the number of atoms with occupancy less than 0.9.

Mol	Type	Chain	Res	Atoms	RSCC	RSR	LLDF	B-factors(\AA^2)	Q<0.9
3	DPK	A	601	14/14	0.59	0.56	5.28	49,57,64,64	0
3	DPK	B	601	14/14	0.54	0.57	4.79	49,57,64,64	0
2	FAD	A	600	53/53	0.83	0.22	-0.82	23,29,32,33	0
2	FAD	B	600	53/53	0.79	0.20	-1.33	22,29,32,33	0

6.5 Other polymers [i](#)

There are no such residues in this entry.