



# Full wwPDB X-ray Structure Validation Report ⓘ

Jan 31, 2016 – 06:41 PM GMT

PDB ID : 1BZZ  
Title : HEMOGLOBIN (ALPHA V1M) MUTANT  
Authors : Kavanaugh, J.S.; Arnone, A.  
Deposited on : 1998-11-04  
Resolution : 1.59 Å(reported)

This is a Full wwPDB X-ray Structure Validation Report for a publicly released PDB entry.  
We welcome your comments at [validation@mail.wwpdb.org](mailto:validation@mail.wwpdb.org)  
A user guide is available at  
<http://wwpdb.org/validation/2016/XrayValidationReportHelp>  
with specific help available everywhere you see the ⓘ symbol.

---

The following versions of software and data (see [references ⓘ](#)) were used in the production of this report:

MolProbity : 4.02b-467  
Mogul : 1.7 (RC4), CSD as536be (2015)  
Xtriage (Phenix) : 1.9-1692  
EDS : rb-20026688  
Percentile statistics : 20151230.v01 (using entries in the PDB archive December 30th 2015)  
Refmac : 5.8.0135  
CCP4 : 6.5.0  
Ideal geometry (proteins) : Engh & Huber (2001)  
Ideal geometry (DNA, RNA) : Parkinson et al. (1996)  
Validation Pipeline (wwPDB-VP) : trunk26865

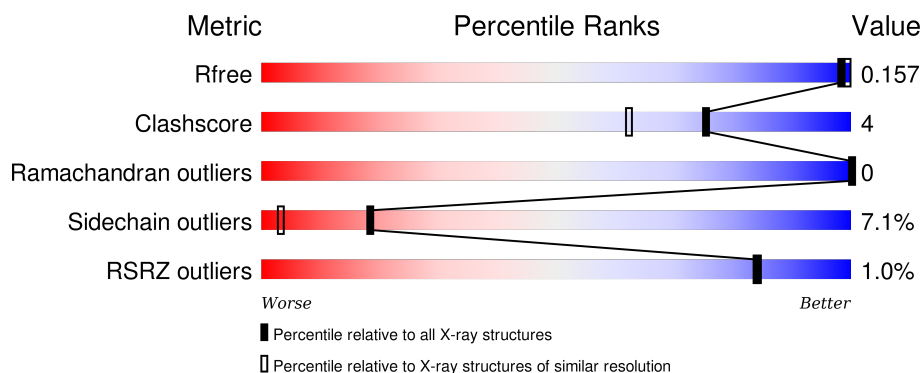
# 1 Overall quality at a glance

The following experimental techniques were used to determine the structure:

## *X-RAY DIFFRACTION*

The reported resolution of this entry is 1.59 Å.

Percentile scores (ranging between 0-100) for global validation metrics of the entry are shown in the following graphic. The table shows the number of entries on which the scores are based.



Metric	Whole archive (#Entries)	Similar resolution (#Entries, resolution range(Å))
$R_{free}$	91344	2475 (1.60-1.60)
Clashscore	102246	2732 (1.60-1.60)
Ramachandran outliers	100387	2654 (1.60-1.60)
Sidechain outliers	100360	2653 (1.60-1.60)
RSRZ outliers	91569	2479 (1.60-1.60)

The table below summarises the geometric issues observed across the polymeric chains and their fit to the electron density. The red, orange, yellow and green segments on the lower bar indicate the fraction of residues that contain outliers for  $\geq 3$ , 2, 1 and 0 types of geometric quality criteria. A grey segment represents the fraction of residues that are not modelled. The numeric value for each fraction is indicated below the corresponding segment, with a dot representing fractions  $\leq 5\%$ . The upper red bar (where present) indicates the fraction of residues that have poor fit to the electron density. The numeric value is given above the bar.

Mol	Chain	Length	Quality of chain
1	A	141	<div> <div>%</div> <div> <div></div> <div>78%</div> <div>18%</div> <div>••</div> </div> </div>
1	C	141	<div> <div>%</div> <div> <div></div> <div>81%</div> <div>16%</div> <div>•</div> </div> </div>
2	B	146	<div> <div>%</div> <div> <div></div> <div>85%</div> <div>12%</div> <div>•</div> </div> </div>
2	D	146	<div> <div>%</div> <div> <div></div> <div>78%</div> <div>20%</div> <div>•</div> </div> </div>

## 2 Entry composition

There are 4 unique types of molecules in this entry. The entry contains 4756 atoms, of which 0 are hydrogens and 0 are deuteriums.

In the tables below, the ZeroOcc column contains the number of atoms modelled with zero occupancy, the AltConf column contains the number of residues with at least one atom in alternate conformation and the Trace column contains the number of residues modelled with at most 2 atoms.

- Molecule 1 is a protein called PROTEIN (HEMOGLOBIN ALPHA CHAIN).

Mol	Chain	Residues	Atoms					ZeroOcc	AltConf	Trace
1	A	141	Total	C	N	O	S	0	0	0
			1070	685	187	194	4			
1	C	141	Total	C	N	O	S	0	0	0
			1070	685	187	194	4			

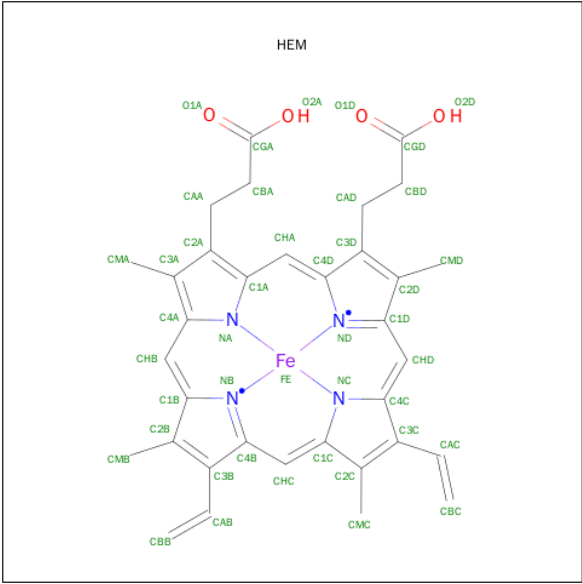
There are 2 discrepancies between the modelled and reference sequences:

Chain	Residue	Modelled	Actual	Comment	Reference
A	1	MET	VAL	ENGINEERED	UNP P69905
C	1	MET	VAL	ENGINEERED	UNP P68871

- Molecule 2 is a protein called PROTEIN (HEMOGLOBIN BETA CHAIN).

Mol	Chain	Residues	Atoms					ZeroOcc	AltConf	Trace
2	B	146	Total	C	N	O	S	0	0	0
			1123	724	195	201	3			
2	D	146	Total	C	N	O	S	0	0	0
			1123	724	195	201	3			

- Molecule 3 is PROTOPORPHYRIN IX CONTAINING FE (three-letter code: HEM) (formula: C<sub>34</sub>H<sub>32</sub>FeN<sub>4</sub>O<sub>4</sub>).



Mol	Chain	Residues	Atoms					ZeroOcc	AltConf
3	A	1	Total	C	Fe	N	O	0	0
			43	34	1	4	4		
3	B	1	Total	C	Fe	N	O	0	0
			43	34	1	4	4		
3	C	1	Total	C	Fe	N	O	0	0
			43	34	1	4	4		
3	D	1	Total	C	Fe	N	O	0	0
			43	34	1	4	4		

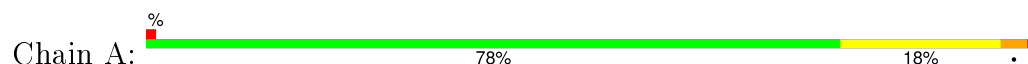
- Molecule 4 is water.

Mol	Chain	Residues	Atoms		ZeroOcc	AltConf
4	A	46	Total	O	0	0
			46	46		
4	B	51	Total	O	0	0
			51	51		
4	C	57	Total	O	0	0
			57	57		
4	D	44	Total	O	0	0
			44	44		

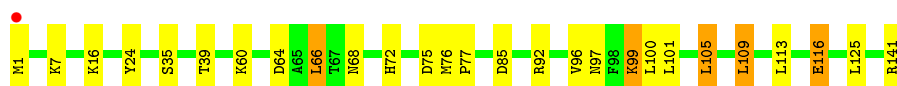
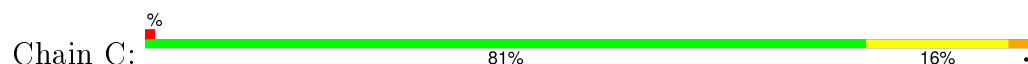
### 3 Residue-property plots [i](#)

These plots are drawn for all protein, RNA and DNA chains in the entry. The first graphic for a chain summarises the proportions of errors displayed in the second graphic. The second graphic shows the sequence view annotated by issues in geometry and electron density. Residues are color-coded according to the number of geometric quality criteria for which they contain at least one outlier: green = 0, yellow = 1, orange = 2 and red = 3 or more. A red dot above a residue indicates a poor fit to the electron density ( $RSRZ > 2$ ). Stretches of 2 or more consecutive residues without any outlier are shown as a green connector. Residues present in the sample, but not in the model, are shown in grey.

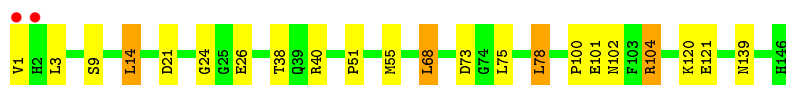
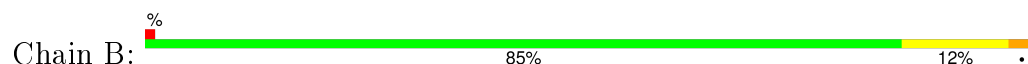
- Molecule 1: PROTEIN (HEMOGLOBIN ALPHA CHAIN)



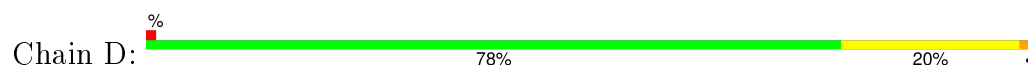
- Molecule 1: PROTEIN (HEMOGLOBIN ALPHA CHAIN)



- Molecule 2: PROTEIN (HEMOGLOBIN BETA CHAIN)



- Molecule 2: PROTEIN (HEMOGLOBIN BETA CHAIN)



## 4 Data and refinement statistics

Property	Value	Source
Space group	P 1 21 1	Depositor
Cell constants a, b, c, $\alpha$ , $\beta$ , $\gamma$	63.30Å 83.60Å 53.80Å 90.00° 99.40° 90.00°	Depositor
Resolution (Å)	8.00 – 1.59 44.81 – 1.61	Depositor EDS
% Data completeness (in resolution range)	88.7 (8.00-1.59) 89.6 (44.81-1.61)	Depositor EDS
$R_{merge}$	0.05	Depositor
$R_{sym}$	0.05	Depositor
$\langle I/\sigma(I) \rangle$ <sup>1</sup>	3.07 (at 1.61Å)	Xtriage
Refinement program	PROLSQ	Depositor
R, $R_{free}$	0.163 , 0.214 0.157 , 0.157	Depositor DCC
$R_{free}$ test set	5833 reflections (10.03%)	DCC
Wilson B-factor (Å <sup>2</sup> )	15.8	Xtriage
Anisotropy	0.105	Xtriage
Bulk solvent $k_{sol}$ (e/Å <sup>3</sup> ), $B_{sol}$ (Å <sup>2</sup> )	0.33 , 63.1	EDS
Estimated twinning fraction	No twinning to report.	Xtriage
L-test for twinning <sup>2</sup>	$\langle  L  \rangle = 0.51$ , $\langle L^2 \rangle = 0.34$	Xtriage
Outliers	0 of 64636 reflections	Xtriage
$F_o, F_c$ correlation	0.97	EDS
Total number of atoms	4756	wwPDB-VP
Average B, all atoms (Å <sup>2</sup> )	20.0	wwPDB-VP

Xtriage's analysis on translational NCS is as follows: *The largest off-origin peak in the Patterson function is 6.78% of the height of the origin peak. No significant pseudotranslation is detected.*

<sup>1</sup>Intensities estimated from amplitudes.

<sup>2</sup>Theoretical values of  $\langle |L| \rangle$ ,  $\langle L^2 \rangle$  for acentric reflections are 0.5, 0.375 respectively for untwinned datasets, and 0.333, 0.2 for perfectly twinned datasets.

## 5 Model quality

### 5.1 Standard geometry

Bond lengths and bond angles in the following residue types are not validated in this section: HEM

The Z score for a bond length (or angle) is the number of standard deviations the observed value is removed from the expected value. A bond length (or angle) with  $|Z| > 5$  is considered an outlier worth inspection. RMSZ is the root-mean-square of all Z scores of the bond lengths (or angles).

Mol	Chain	Bond lengths		Bond angles	
		RMSZ	# Z  >5	RMSZ	# Z  >5
1	A	0.90	0/1098	1.52	12/1491 (0.8%)
1	C	0.91	0/1098	1.49	11/1491 (0.7%)
2	B	0.93	0/1153	1.46	10/1566 (0.6%)
2	D	0.91	0/1153	1.47	18/1566 (1.1%)
All	All	0.91	0/4502	1.48	51/6114 (0.8%)

Chiral center outliers are detected by calculating the chiral volume of a chiral center and verifying if the center is modelled as a planar moiety or with the opposite hand. A planarity outlier is detected by checking planarity of atoms in a peptide group, atoms in a mainchain group or atoms of a sidechain that are expected to be planar.

Mol	Chain	#Chirality outliers	#Planarity outliers
2	B	0	1

There are no bond length outliers.

All (51) bond angle outliers are listed below:

Mol	Chain	Res	Type	Atoms	Z	Observed(°)	Ideal(°)
1	A	92	ARG	NE-CZ-NH2	-16.45	112.08	120.30
2	B	40	ARG	NE-CZ-NH1	12.34	126.47	120.30
1	C	141	ARG	NE-CZ-NH2	-10.97	114.81	120.30
1	C	92	ARG	NE-CZ-NH2	-10.63	114.98	120.30
2	B	73	ASP	CB-CG-OD1	9.24	126.62	118.30
1	C	105	LEU	CA-CB-CG	9.04	136.08	115.30
2	B	40	ARG	NE-CZ-NH2	-8.77	115.92	120.30
1	A	75	ASP	CB-CG-OD2	-8.67	110.50	118.30
2	B	121	GLU	OE1-CD-OE2	8.55	133.56	123.30
1	C	64	ASP	CB-CG-OD2	-7.91	111.18	118.30
1	C	75	ASP	CB-CG-OD2	-7.60	111.46	118.30
2	D	40	ARG	NE-CZ-NH2	-7.10	116.75	120.30

*Continued on next page...*

*Continued from previous page...*

Mol	Chain	Res	Type	Atoms	Z	Observed(°)	Ideal(°)
2	B	101	GLU	OE1-CD-OE2	7.08	131.80	123.30
1	A	31	ARG	NE-CZ-NH2	-6.98	116.81	120.30
1	A	6	ASP	CB-CG-OD2	-6.89	112.10	118.30
2	D	7	GLU	OE1-CD-OE2	6.65	131.28	123.30
2	D	121	GLU	OE1-CD-OE2	6.33	130.90	123.30
2	D	121	GLU	N-CA-CB	6.19	121.74	110.60
2	D	47	ASP	O-C-N	6.13	132.50	122.70
1	A	92	ARG	NE-CZ-NH1	6.01	123.30	120.30
1	A	141	ARG	NE-CZ-NH2	-6.01	117.30	120.30
2	D	52	ASP	CB-CG-OD1	5.95	123.66	118.30
1	C	141	ARG	NE-CZ-NH1	5.94	123.27	120.30
1	C	92	ARG	NH1-CZ-NH2	5.87	125.86	119.40
2	D	1	VAL	CA-C-N	-5.80	104.44	117.20
2	B	26	GLU	CA-CB-CG	5.79	126.14	113.40
2	D	22	GLU	CA-CB-CG	5.77	126.10	113.40
1	A	105	LEU	CA-CB-CG	5.76	128.55	115.30
2	D	121	GLU	CA-CB-CG	5.76	126.07	113.40
1	A	140	TYR	CB-CG-CD2	-5.67	117.60	121.00
1	C	64	ASP	CB-CG-OD1	5.65	123.38	118.30
2	B	40	ARG	CD-NE-CZ	5.60	131.44	123.60
1	A	46	PHE	CB-CG-CD1	5.58	124.71	120.80
2	D	121	GLU	CG-CD-OE2	-5.43	107.45	118.30
1	A	33	PHE	CB-CG-CD2	-5.41	117.01	120.80
2	D	43	GLU	CG-CD-OE1	5.38	129.06	118.30
2	B	21	ASP	CB-CG-OD1	5.35	123.12	118.30
1	C	85	ASP	CB-CG-OD2	-5.34	113.49	118.30
1	C	66	LEU	CB-CG-CD1	5.29	120.00	111.00
2	D	40	ARG	NE-CZ-NH1	5.29	122.95	120.30
1	A	72	HIS	CA-CB-CG	-5.28	104.62	113.60
2	B	101	GLU	CG-CD-OE2	-5.28	107.74	118.30
2	D	121	GLU	CB-CA-C	-5.23	99.93	110.40
2	B	14	LEU	CA-CB-CG	5.20	127.26	115.30
2	D	142	ALA	N-CA-CB	-5.20	102.83	110.10
2	D	70	ALA	CB-CA-C	5.16	117.83	110.10
1	C	24	TYR	CB-CG-CD2	-5.15	117.91	121.00
1	A	78	ASN	CA-CB-CG	-5.10	102.17	113.40
2	D	139	ASN	CA-CB-CG	-5.09	102.19	113.40
2	D	30	ARG	NE-CZ-NH2	-5.08	117.76	120.30
2	D	129	ALA	CB-CA-C	5.01	117.61	110.10

There are no chirality outliers.

All (1) planarity outliers are listed below:



Mol	Chain	Res	Type	Group
2	B	104	ARG	Sidechain

## 5.2 Too-close contacts ⓘ

In the following table, the Non-H and H(model) columns list the number of non-hydrogen atoms and hydrogen atoms in the chain respectively. The H(added) column lists the number of hydrogen atoms added and optimized by MolProbity. The Clashes column lists the number of clashes within the asymmetric unit, whereas Symm-Clashes lists symmetry related clashes.

Mol	Chain	Non-H	H(model)	H(added)	Clashes	Symm-Clashes
1	A	1070	0	1073	11	0
1	C	1070	0	1073	10	0
2	B	1123	0	1118	7	0
2	D	1123	0	1118	8	0
3	A	43	0	30	1	0
3	B	43	0	30	0	0
3	C	43	0	30	0	0
3	D	43	0	30	1	0
4	A	46	0	0	0	0
4	B	51	0	0	1	0
4	C	57	0	0	0	0
4	D	44	0	0	0	0
All	All	4756	0	4502	35	0

The all-atom clashscore is defined as the number of clashes found per 1000 atoms (including hydrogen atoms). The all-atom clashscore for this structure is 4.

All (35) close contacts within the same asymmetric unit are listed below, sorted by their clash magnitude.

Atom-1	Atom-2	Interatomic distance (Å)	Clash overlap (Å)
1:C:113:LEU:HB3	1:C:116:GLU:HG2	1.75	0.67
1:A:75:ASP:OD2	1:A:78:ASN:HB2	1.95	0.67
2:D:5:PRO:HB2	2:D:6:GLU:OE2	1.97	0.64
1:A:76:MET:N	1:A:77:PRO:CD	2.61	0.63
2:D:20:VAL:HG13	2:D:68:LEU:HB3	1.87	0.55
1:A:61:LYS:HD2	3:A:142:HEM:HAA2	1.91	0.53
2:D:38:THR:HG22	2:D:102:ASN:ND2	2.24	0.53
1:C:109:LEU:HD23	1:C:125:LEU:HD13	1.91	0.52
2:B:100:PRO:HB2	2:B:104:ARG:HH12	1.75	0.52
2:D:51:PRO:O	2:D:55:MET:HG2	2.11	0.51
1:A:96:VAL:O	1:A:99:LYS:HG3	2.10	0.51

*Continued on next page...*

*Continued from previous page...*

Atom-1	Atom-2	Interatomic distance (Å)	Clash overlap (Å)
2:B:1:VAL:N	2:B:78:LEU:O	2.43	0.50
1:A:99:LYS:HD2	1:A:100:LEU:HD23	1.95	0.48
1:C:99:LYS:HE2	1:C:100:LEU:HD21	1.96	0.47
1:C:68:ASN:O	1:C:72:HIS:HD2	1.96	0.47
1:C:39:THR:HG22	1:C:97:ASN:HD22	1.80	0.47
1:C:113:LEU:HD13	1:C:116:GLU:HG3	1.98	0.46
1:C:76:MET:N	1:C:77:PRO:CD	2.79	0.46
2:B:1:VAL:HG23	2:B:3:LEU:HG	1.98	0.45
2:B:139:ASN:ND2	4:B:485:HOH:O	2.47	0.44
1:A:28:ALA:CB	1:A:105:LEU:HD13	2.47	0.44
1:A:68:ASN:O	1:A:72:HIS:HD2	2.00	0.44
1:A:83:LEU:HD12	1:A:83:LEU:HA	1.89	0.44
1:A:3:SER:O	1:A:7:LYS:HG3	2.18	0.43
1:A:21:ALA:HB1	1:A:63:ALA:HB1	2.01	0.43
1:C:113:LEU:HD13	1:C:116:GLU:CG	2.48	0.43
2:D:7:GLU:OE1	2:D:132:LYS:NZ	2.47	0.43
2:B:24:GLY:HA2	2:B:68:LEU:HG	2.01	0.43
2:B:51:PRO:O	2:B:55:MET:HG2	2.18	0.42
1:C:99:LYS:HG2	1:C:100:LEU:N	2.34	0.42
2:B:38:THR:HG22	2:B:102:ASN:ND2	2.35	0.42
2:D:102:ASN:HB3	3:D:147:HEM:HMC1	2.02	0.42
1:A:39:THR:HG22	1:A:97:ASN:HD22	1.85	0.42
2:D:21:ASP:OD1	2:D:65:LYS:HG3	2.20	0.41
1:C:35:SER:HB3	2:D:131:GLN:HG3	2.03	0.41

There are no symmetry-related clashes.

## 5.3 Torsion angles [i](#)

### 5.3.1 Protein backbone [i](#)

In the following table, the Percentiles column shows the percent Ramachandran outliers of the chain as a percentile score with respect to all X-ray entries followed by that with respect to entries of similar resolution.

The Analysed column shows the number of residues for which the backbone conformation was analysed, and the total number of residues.

Mol	Chain	Analysed	Favoured	Allowed	Outliers	Percentiles
1	A	139/141 (99%)	136 (98%)	3 (2%)	0	100 100

*Continued on next page...*

*Continued from previous page...*

Mol	Chain	Analysed	Favoured	Allowed	Outliers	Percentiles	
1	C	139/141 (99%)	136 (98%)	3 (2%)	0	100	100
2	B	144/146 (99%)	143 (99%)	1 (1%)	0	100	100
2	D	144/146 (99%)	143 (99%)	1 (1%)	0	100	100
All	All	566/574 (99%)	558 (99%)	8 (1%)	0	100	100

There are no Ramachandran outliers to report.

### 5.3.2 Protein sidechains ⓘ

In the following table, the Percentiles column shows the percent sidechain outliers of the chain as a percentile score with respect to all X-ray entries followed by that with respect to entries of similar resolution.

The Analysed column shows the number of residues for which the sidechain conformation was analysed, and the total number of residues.

Mol	Chain	Analysed	Rotameric	Outliers	Percentiles	
1	A	113/113 (100%)	106 (94%)	7 (6%)	23	5
1	C	113/113 (100%)	102 (90%)	11 (10%)	10	1
2	B	118/118 (100%)	112 (95%)	6 (5%)	29	7
2	D	118/118 (100%)	109 (92%)	9 (8%)	16	2
All	All	462/462 (100%)	429 (93%)	33 (7%)	18	3

All (33) residues with a non-rotameric sidechain are listed below:

Mol	Chain	Res	Type
1	A	1	MET
1	A	52	SER
1	A	66	LEU
1	A	99	LYS
1	A	101	LEU
1	A	105	LEU
1	A	109	LEU
2	B	9	SER
2	B	14	LEU
2	B	68	LEU
2	B	75	LEU
2	B	78	LEU
2	B	120	LYS

*Continued on next page...*

*Continued from previous page...*

Mol	Chain	Res	Type
1	C	1	MET
1	C	7	LYS
1	C	16	LYS
1	C	60	LYS
1	C	66	LEU
1	C	96	VAL
1	C	99	LYS
1	C	101	LEU
1	C	105	LEU
1	C	109	LEU
1	C	116	GLU
2	D	14	LEU
2	D	32	LEU
2	D	59	LYS
2	D	68	LEU
2	D	75	LEU
2	D	78	LEU
2	D	82	LYS
2	D	104	ARG
2	D	139	ASN

Some sidechains can be flipped to improve hydrogen bonding and reduce clashes. All (6) such sidechains are listed below:

Mol	Chain	Res	Type
1	A	72	HIS
1	A	97	ASN
2	B	102	ASN
1	C	72	HIS
1	C	97	ASN
2	D	102	ASN

### 5.3.3 RNA ⓘ

There are no RNA molecules in this entry.

## 5.4 Non-standard residues in protein, DNA, RNA chains ⓘ

There are no non-standard protein/DNA/RNA residues in this entry.

## 5.5 Carbohydrates [i](#)

There are no carbohydrates in this entry.

## 5.6 Ligand geometry [i](#)

4 ligands are modelled in this entry.

In the following table, the Counts columns list the number of bonds (or angles) for which Mogul statistics could be retrieved, the number of bonds (or angles) that are observed in the model and the number of bonds (or angles) that are defined in the chemical component dictionary. The Link column lists molecule types, if any, to which the group is linked. The Z score for a bond length (or angle) is the number of standard deviations the observed value is removed from the expected value. A bond length (or angle) with  $|Z| > 2$  is considered an outlier worth inspection. RMSZ is the root-mean-square of all Z scores of the bond lengths (or angles).

Mol	Type	Chain	Res	Link	Bond lengths			Bond angles		
					Counts	RMSZ	# $ Z  > 2$	Counts	RMSZ	# $ Z  > 2$
3	HEM	A	142	1	30,50,50	2.50	11 (36%)	24,82,82	2.61	10 (41%)
3	HEM	B	147	2	30,50,50	2.38	10 (33%)	24,82,82	2.92	12 (50%)
3	HEM	C	142	1	30,50,50	2.86	7 (23%)	24,82,82	2.45	8 (33%)
3	HEM	D	147	2	30,50,50	2.65	9 (30%)	24,82,82	2.60	9 (37%)

In the following table, the Chirals column lists the number of chiral outliers, the number of chiral centers analysed, the number of these observed in the model and the number defined in the chemical component dictionary. Similar counts are reported in the Torsion and Rings columns. '-' means no outliers of that kind were identified.

Mol	Type	Chain	Res	Link	Chirals	Torsions	Rings
3	HEM	A	142	1	-	0/10/54/54	0/0/8/8
3	HEM	B	147	2	-	0/10/54/54	0/0/8/8
3	HEM	C	142	1	-	0/10/54/54	0/0/8/8
3	HEM	D	147	2	-	0/10/54/54	0/0/8/8

All (37) bond length outliers are listed below:

Mol	Chain	Res	Type	Atoms	Z	Observed(Å)	Ideal(Å)
3	C	142	HEM	C3B-C4B	-8.95	1.43	1.51
3	D	147	HEM	C3B-C4B	-7.15	1.45	1.51
3	D	147	HEM	C3D-C4D	-7.08	1.42	1.51
3	C	142	HEM	C3D-C4D	-6.85	1.42	1.51
3	B	147	HEM	C2D-C3D	-6.68	1.34	1.54
3	C	142	HEM	C2D-C3D	-6.45	1.35	1.54

*Continued on next page...*

*Continued from previous page...*

Mol	Chain	Res	Type	Atoms	Z	Observed(Å)	Ideal(Å)
3	D	147	HEM	C2D-C3D	-6.42	1.35	1.54
3	A	142	HEM	C3B-C4B	-6.24	1.46	1.51
3	A	142	HEM	C2D-C3D	-6.23	1.35	1.54
3	A	142	HEM	C3D-C4D	-5.84	1.44	1.51
3	B	147	HEM	C3B-C4B	-4.93	1.47	1.51
3	B	147	HEM	C3D-C4D	-4.80	1.45	1.51
3	C	142	HEM	C2C-C1C	-4.44	1.44	1.52
3	A	142	HEM	C2C-C1C	-4.09	1.44	1.52
3	D	147	HEM	C2C-C1C	-3.72	1.45	1.52
3	B	147	HEM	C2C-C1C	-3.62	1.45	1.52
3	A	142	HEM	C2B-C1B	-2.21	1.44	1.51
3	A	142	HEM	C2D-C1D	-2.12	1.44	1.51
3	D	147	HEM	C2B-C1B	-2.09	1.45	1.51
3	B	147	HEM	CMA-C3A	2.02	1.55	1.51
3	B	147	HEM	C3C-CAC	2.04	1.55	1.51
3	A	142	HEM	C3B-CAB	2.05	1.55	1.51
3	D	147	HEM	C3B-CAB	2.06	1.55	1.51
3	A	142	HEM	CHC-C1C	2.10	1.41	1.36
3	A	142	HEM	FE-NB	2.14	2.08	1.97
3	C	142	HEM	C4C-NC	2.24	1.38	1.36
3	B	147	HEM	FE-NC	2.38	2.05	1.95
3	C	142	HEM	FE-NC	2.45	2.05	1.95
3	D	147	HEM	C4C-NC	2.48	1.39	1.36
3	D	147	HEM	C1C-NC	2.51	1.39	1.36
3	B	147	HEM	C3B-CAB	2.56	1.56	1.51
3	B	147	HEM	C4C-NC	2.65	1.39	1.36
3	C	142	HEM	C1C-NC	2.72	1.39	1.36
3	D	147	HEM	FE-NC	2.89	2.07	1.95
3	A	142	HEM	FE-NC	2.92	2.07	1.95
3	A	142	HEM	C1C-NC	3.09	1.39	1.36
3	B	147	HEM	C1C-NC	4.15	1.41	1.36

All (39) bond angle outliers are listed below:

Mol	Chain	Res	Type	Atoms	Z	Observed(°)	Ideal(°)
3	B	147	HEM	CAA-C2A-C1A	-5.52	121.02	127.01
3	D	147	HEM	C3B-CAB-CBB	-4.58	117.43	124.46
3	A	142	HEM	CAA-C2A-C1A	-4.04	122.62	127.01
3	B	147	HEM	CMA-C3A-C4A	-3.50	122.57	128.36
3	A	142	HEM	CMA-C3A-C4A	-2.77	123.78	128.36
3	C	142	HEM	CMA-C3A-C4A	-2.73	123.84	128.36
3	C	142	HEM	CAA-C2A-C1A	-2.72	124.05	127.01

*Continued on next page...*

*Continued from previous page...*

Mol	Chain	Res	Type	Atoms	Z	Observed(°)	Ideal(°)
3	B	147	HEM	CBA-CAA-C2A	-2.60	107.86	112.53
3	D	147	HEM	CMA-C3A-C4A	-2.47	124.28	128.36
3	D	147	HEM	C3C-CAC-CBC	-2.34	120.87	124.46
3	A	142	HEM	C1D-CHD-C4C	-2.24	122.08	125.82
3	B	147	HEM	C3B-CAB-CBB	-2.23	121.04	124.46
3	A	142	HEM	CMA-C3A-C2A	2.27	129.99	125.24
3	B	147	HEM	C3B-C4B-CHC	2.56	126.77	123.16
3	A	142	HEM	CMD-C2D-C3D	2.65	126.06	114.35
3	B	147	HEM	CMA-C3A-C2A	3.04	131.59	125.24
3	C	142	HEM	CMD-C2D-C3D	3.12	128.13	114.35
3	B	147	HEM	CAD-C3D-C4D	3.14	123.55	112.47
3	A	142	HEM	CAD-C3D-C4D	3.27	123.99	112.47
3	B	147	HEM	CMD-C2D-C3D	3.36	129.23	114.35
3	D	147	HEM	CAD-C3D-C4D	3.43	124.57	112.47
3	C	142	HEM	CAD-C3D-C4D	3.43	124.58	112.47
3	D	147	HEM	CMD-C2D-C3D	3.64	130.44	114.35
3	D	147	HEM	CMC-C2C-C3C	4.17	126.93	116.53
3	A	142	HEM	CMC-C2C-C3C	4.20	127.01	116.53
3	D	147	HEM	CAD-C3D-C2D	4.28	125.52	113.22
3	C	142	HEM	C2D-C3D-C4D	4.38	108.92	101.50
3	B	147	HEM	C2D-C3D-C4D	4.42	108.98	101.50
3	A	142	HEM	C2D-C3D-C4D	4.58	109.27	101.50
3	C	142	HEM	CAD-C3D-C2D	4.60	126.46	113.22
3	A	142	HEM	CAD-C3D-C2D	4.69	126.70	113.22
3	B	147	HEM	CAD-C3D-C2D	4.87	127.22	113.22
3	C	142	HEM	CMB-C2B-C3B	4.91	128.78	116.53
3	D	147	HEM	C2D-C3D-C4D	4.93	109.87	101.50
3	B	147	HEM	CMC-C2C-C3C	4.95	128.90	116.53
3	D	147	HEM	CMB-C2B-C3B	5.00	129.02	116.53
3	C	142	HEM	CMC-C2C-C3C	5.25	129.63	116.53
3	A	142	HEM	CMB-C2B-C3B	5.48	130.20	116.53
3	B	147	HEM	CMB-C2B-C3B	5.78	130.95	116.53

There are no chirality outliers.

There are no torsion outliers.

There are no ring outliers.

2 monomers are involved in 2 short contacts:

Mol	Chain	Res	Type	Clashes	Symm-Clashes
3	A	142	HEM	1	0
3	D	147	HEM	1	0

## 5.7 Other polymers

There are no such residues in this entry.

## 5.8 Polymer linkage issues

There are no chain breaks in this entry.



## 6 Fit of model and data [i](#)

### 6.1 Protein, DNA and RNA chains [i](#)

In the following table, the column labelled ‘#RSRZ> 2’ contains the number (and percentage) of RSRZ outliers, followed by percent RSRZ outliers for the chain as percentile scores relative to all X-ray entries and entries of similar resolution. The OWAB column contains the minimum, median, 95<sup>th</sup> percentile and maximum values of the occupancy-weighted average B-factor per residue. The column labelled ‘Q< 0.9’ lists the number of (and percentage) of residues with an average occupancy less than 0.9.

Mol	Chain	Analysed	<RSRZ>	#RSRZ>2	OWAB(Å <sup>2</sup> )	Q<0.9
1	A	141/141 (100%)	-0.52	1 (0%) 89 89	9, 15, 38, 76	0
1	C	141/141 (100%)	-0.55	1 (0%) 89 89	8, 14, 35, 83	0
2	B	146/146 (100%)	-0.55	2 (1%) 78 77	9, 16, 42, 99	0
2	D	146/146 (100%)	-0.52	2 (1%) 78 77	9, 16, 45, 90	0
All	All	574/574 (100%)	-0.54	6 (1%) 84 84	8, 15, 43, 99	0

All (6) RSRZ outliers are listed below:

Mol	Chain	Res	Type	RSRZ
2	B	1	VAL	6.0
2	D	1	VAL	3.3
1	A	1	MET	2.6
2	D	2	HIS	2.5
1	C	1	MET	2.4
2	B	2	HIS	2.1

### 6.2 Non-standard residues in protein, DNA, RNA chains [i](#)

There are no non-standard protein/DNA/RNA residues in this entry.

### 6.3 Carbohydrates [i](#)

There are no carbohydrates in this entry.

### 6.4 Ligands [i](#)

In the following table, the Atoms column lists the number of modelled atoms in the group and the number defined in the chemical component dictionary. LLDF column lists the quality of electron

density of the group with respect to its neighbouring residues in protein, DNA or RNA chains. The B-factors column lists the minimum, median, 95<sup>th</sup> percentile and maximum values of B factors of atoms in the group. The column labelled 'Q< 0.9' lists the number of atoms with occupancy less than 0.9.

Mol	Type	Chain	Res	Atoms	RSCC	RSR	LLDF	B-factors(Å <sup>2</sup> )	Q<0.9
3	HEM	C	142	43/43	0.99	0.07	1.03	8,11,30,42	0
3	HEM	D	147	43/43	0.99	0.06	0.63	8,12,45,63	0
3	HEM	A	142	43/43	0.99	0.07	0.26	8,12,27,48	0
3	HEM	B	147	43/43	0.99	0.06	0.19	7,11,26,51	0

## 6.5 Other polymers

There are no such residues in this entry.