



wwPDB X-ray Structure Validation Summary Report ⓘ

Feb 1, 2016 – 03:15 PM GMT

PDB ID : 4BZS
Title : Human angiotensin converting enzyme N-domain in complex with K-26
Authors : Kramer, G.J.; Mohd, A.; Schwager, S.L.U.; MAsuyer, G.; Acharya, K.R.;
Sturrock, E.D.; Bachmann, B.O.
Deposited on : 2013-07-29
Resolution : 2.10 Å(reported)

This is a wwPDB X-ray Structure Validation Summary Report for a publicly released PDB entry.
We welcome your comments at validation@mail.wwpdb.org
A user guide is available at
<http://wwpdb.org/validation/2016/XrayValidationReportHelp>
with specific help available everywhere you see the ⓘ symbol.

The following versions of software and data (see [references ⓘ](#)) were used in the production of this report:

MolProbity : 4.02b-467
Mogul : 1.7 (RC4), CSD as536be (2015)
Xtriage (Phenix) : 1.9-1692
EDS : rb-20026688
Percentile statistics : 20151230.v01 (using entries in the PDB archive December 30th 2015)
Refmac : 5.8.0135
CCP4 : 6.5.0
Ideal geometry (proteins) : Engh & Huber (2001)
Ideal geometry (DNA, RNA) : Parkinson et al. (1996)
Validation Pipeline (wwPDB-VP) : trunk26865

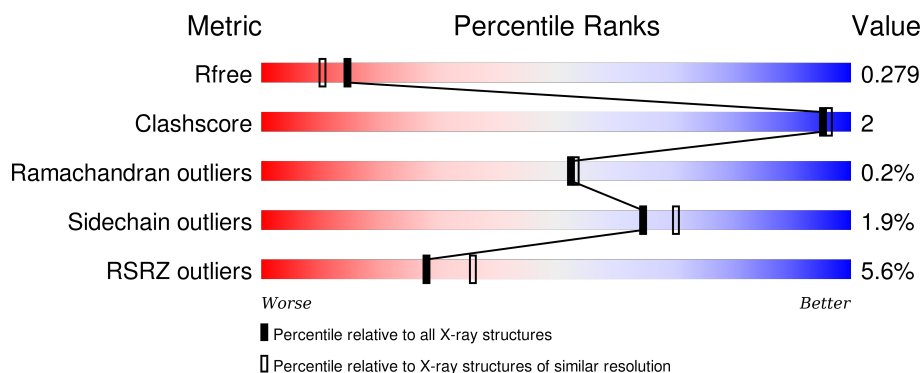
1 Overall quality at a glance ⓘ

The following experimental techniques were used to determine the structure:

X-RAY DIFFRACTION

The reported resolution of this entry is 2.10 Å.

Percentile scores (ranging between 0-100) for global validation metrics of the entry are shown in the following graphic. The table shows the number of entries on which the scores are based.



Metric	Whole archive (#Entries)	Similar resolution (#Entries, resolution range(Å))
R_{free}	91344	3939 (2.10-2.10)
Clashscore	102246	4460 (2.10-2.10)
Ramachandran outliers	100387	4413 (2.10-2.10)
Sidechain outliers	100360	4414 (2.10-2.10)
RSRZ outliers	91569	3948 (2.10-2.10)

The table below summarises the geometric issues observed across the polymeric chains and their fit to the electron density. The red, orange, yellow and green segments on the lower bar indicate the fraction of residues that contain outliers for ≥ 3 , 2, 1 and 0 types of geometric quality criteria. A grey segment represents the fraction of residues that are not modelled. The numeric value for each fraction is indicated below the corresponding segment, with a dot representing fractions $\leq 5\%$. The upper red bar (where present) indicates the fraction of residues that have poor fit to the electron density. The numeric value is given above the bar.

Mol	Chain	Length	Quality of chain
1	A	629	<div> <div>7%</div> <div>92%</div> <div>5%</div> <div>.</div> </div>
1	B	629	<div> <div>4%</div> <div>90%</div> <div>7%</div> <div>.</div> </div>

The following table lists non-polymeric compounds, carbohydrate monomers and non-standard residues in protein, DNA, RNA chains that are outliers for geometric or electron-density-fit criteria:

Mol	Type	Chain	Res	Chirality	Geometry	Clashes	Electron density
6	PEG	B	704	-	-	-	X

2 Entry composition

There are 13 unique types of molecules in this entry. The entry contains 10447 atoms, of which 0 are hydrogens and 0 are deuteriums.

In the tables below, the ZeroOcc column contains the number of atoms modelled with zero occupancy, the AltConf column contains the number of residues with at least one atom in alternate conformation and the Trace column contains the number of residues modelled with at most 2 atoms.

- Molecule 1 is a protein called ANGIOTENSIN-CONVERTING ENZYME.

Mol	Chain	Residues	Atoms					ZeroOcc	AltConf	Trace
1	A	612	Total	C	N	O	S	4	0	0
			4980	3197	855	909	19			
1	B	610	Total	C	N	O	S	1	0	0
			4961	3186	853	903	19			

There are 4 discrepancies between the modelled and reference sequences:

Chain	Residue	Modelled	Actual	Comment	Reference
A	629	LEU	-	EXPRESSION TAG	UNP P12821
A	576	LEU	PRO	ENGINEERED MUTATION	UNP P12821
B	629	LEU	-	EXPRESSION TAG	UNP P12821
B	576	LEU	PRO	ENGINEERED MUTATION	UNP P12821

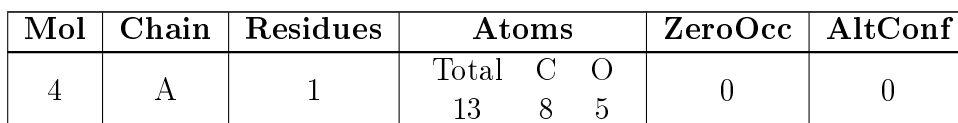
- Molecule 2 is ZINC ION (three-letter code: ZN) (formula: Zn).

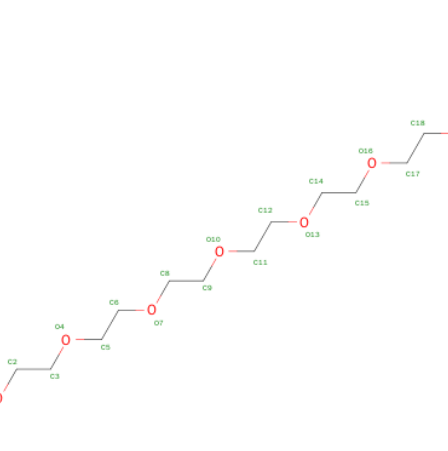
Mol	Chain	Residues	Atoms		ZeroOcc	AltConf
2	B	1	Total	Zn	0	0
			1	1		
2	A	1	Total	Zn	0	0
			1	1		

- Molecule 3 is CHLORIDE ION (three-letter code: CL) (formula: Cl).

Mol	Chain	Residues	Atoms		ZeroOcc	AltConf
3	B	1	Total	Cl	0	0
			1	1		
3	A	1	Total	Cl	0	0
			1	1		

- Molecule 4 is 2-{2-[2-(2-{2-[2-(2-ETHOXY-ETHOXY)-ETHOXY]-ETHOXY}-ETHOXY)-ETHOXY]-ETHOXY}-ETHANOL (three-letter code: PE4) (formula: C₁₆H₃₄O₈).



- P6G
- 
- Chemical structure of P6G (Poly(6-gramine) derivative) is shown. The structure is a linear chain of repeating units, with atoms labeled C1 through C18 and O1 through O6. The terminal groups are hydroxyl groups (HO-C1 and C18-OH).

Mol	Chain	Residues	Atoms			ZeroOcc	AltConf
5	A	1	Total	C	O	0	0
			19	12	7		

- 



Mol	Chain	Residues	Atoms			ZeroOcc	AltConf
6	A	1	Total	C	O	0	0
			7	4	3		
6	B	1	Total	C	O	0	0
			7	4	3		
6	B	1	Total	C	O	0	0
			7	4	3		
6	B	1	Total	C	O	0	0
			7	4	3		

- Molecule 7 is a polymer of unknown type called SUGAR (2-MER).

Mol	Chain	Residues	Atoms				ZeroOcc	AltConf
7	A	2	Total	C	N	O	0	0
			24	14	1	9		
7	B	2	Total	C	N	O	0	0
			24	14	1	9		

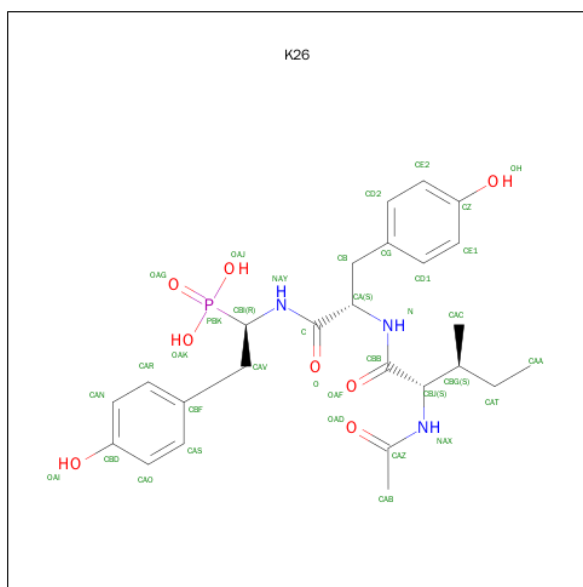
- Molecule 8 is a polymer of unknown type called SUGAR (2-MER).

Mol	Chain	Residues	Atoms				ZeroOcc	AltConf
8	A	2	Total	C	N	O	0	0
			28	16	2	10		
8	B	2	Total	C	N	O	0	0
			28	16	2	10		

- Molecule 9 is a polymer of unknown type called SUGAR (3-MER).

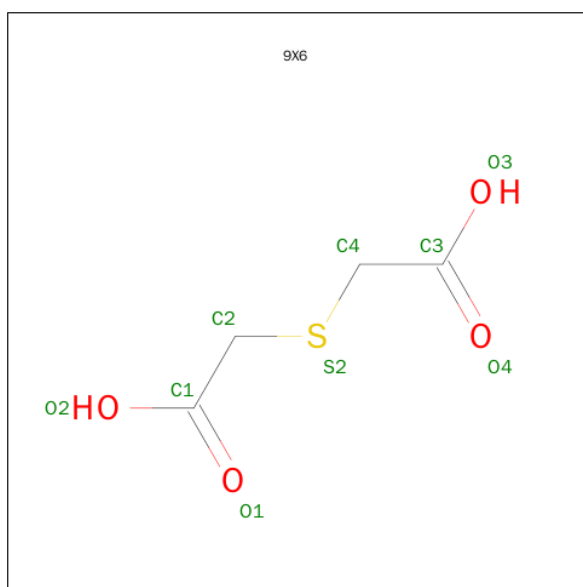
Mol	Chain	Residues	Atoms				ZeroOcc	AltConf
9	A	3	Total	C	N	O	0	0
			39	22	2	15		
9	B	3	Total	C	N	O	0	0
			39	22	2	15		

- Molecule 10 is N-ACETYL-L-ILE-L-TYR-(R)-1-AMINO-2-(4-HYDROXYPHENYL)ETHYLPHOSPHONIC ACID (three-letter code: K26) (formula: $C_{25}H_{34}N_3O_8P$).



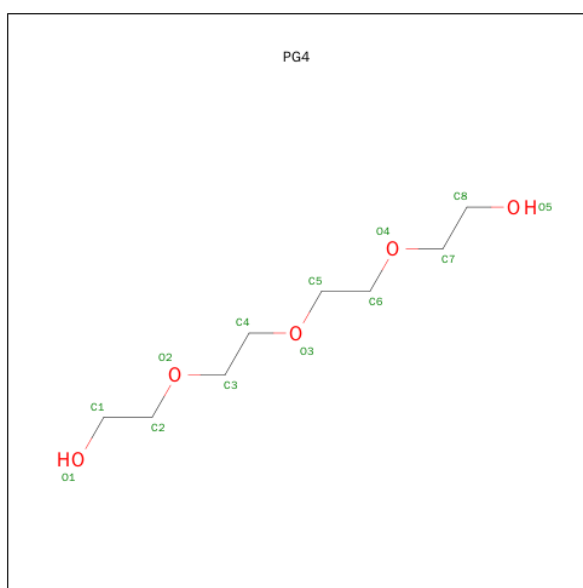
Mol	Chain	Residues	Atoms					ZeroOcc	AltConf
10	A	1	Total	C	N	O	P	0	0
			37	25	3	8	1		
10	B	1	Total	C	N	O	P	0	0
			37	25	3	8	1		

- Molecule 11 is THIODIGLYCOLIC ACID (three-letter code: 9X6) (formula: $C_4H_6O_4S$).



Mol	Chain	Residues	Atoms				ZeroOcc	AltConf
11	A	1	Total	C	O	S	0	0
			9	4	4	1		
11	B	1	Total	C	O	S	0	0
			9	4	4	1		

- Molecule 12 is TETRAETHYLENE GLYCOL (three-letter code: PG4) (formula: $C_8H_{18}O_5$).



Mol	Chain	Residues	Atoms			ZeroOcc	AltConf
12	B	1	Total	C	O	0	0
			7	4	3		

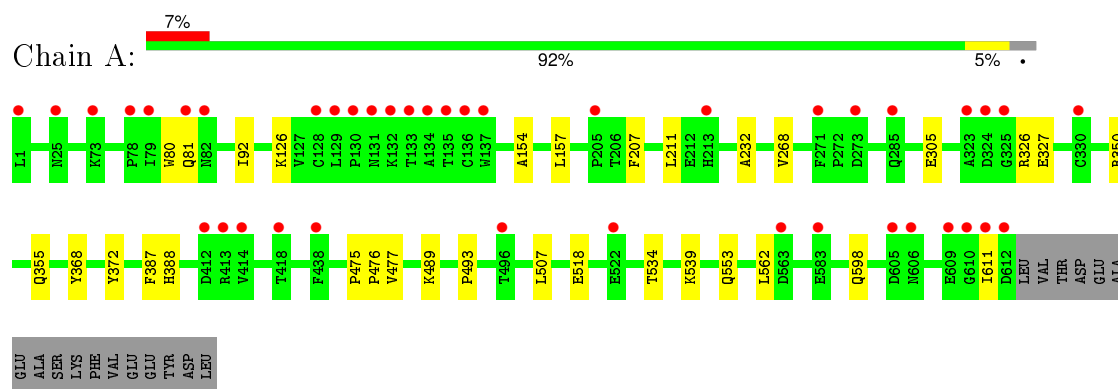
- Molecule 13 is water.

Mol	Chain	Residues	Atoms		ZeroOcc	AltConf
13	A	65	Total 65	O 65	0	0
13	B	96	Total 96	O 96	0	0

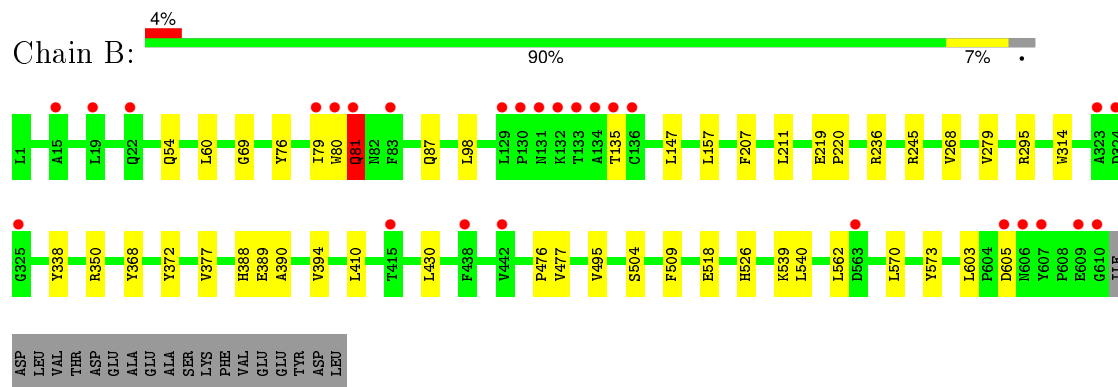
3 Residue-property plots [i](#)

These plots are drawn for all protein, RNA and DNA chains in the entry. The first graphic for a chain summarises the proportions of errors displayed in the second graphic. The second graphic shows the sequence view annotated by issues in geometry and electron density. Residues are color-coded according to the number of geometric quality criteria for which they contain at least one outlier: green = 0, yellow = 1, orange = 2 and red = 3 or more. A red dot above a residue indicates a poor fit to the electron density ($RSRZ > 2$). Stretches of 2 or more consecutive residues without any outlier are shown as a green connector. Residues present in the sample, but not in the model, are shown in grey.

• Molecule 1: ANGIOTENSIN-CONVERTING ENZYME



• Molecule 1: ANGIOTENSIN-CONVERTING ENZYME



4 Data and refinement statistics

Property	Value	Source
Space group	P 1	Depositor
Cell constants a, b, c, α , β , γ	73.00Å 77.32Å 82.07Å 88.69° 64.53° 75.29°	Depositor
Resolution (Å)	36.61 – 2.10 36.58 – 2.10	Depositor EDS
% Data completeness (in resolution range)	83.5 (36.61-2.10) 81.8 (36.58-2.10)	Depositor EDS
R_{merge}	0.08	Depositor
R_{sym}	(Not available)	Depositor
$\langle I/\sigma(I) \rangle$ ¹	1.62 (at 2.10Å)	Xtriage
Refinement program	REFMAC 5.7.0029	Depositor
R, R_{free}	0.233 , 0.277 0.235 , 0.279	Depositor DCC
R_{free} test set	3837 reflections (5.29%)	DCC
Wilson B-factor (Å ²)	37.1	Xtriage
Anisotropy	0.240	Xtriage
Bulk solvent k_{sol} (e/Å ³), B_{sol} (Å ²)	0.37 , 41.7	EDS
Estimated twinning fraction	No twinning to report.	Xtriage
L-test for twinning ²	$\langle L \rangle = 0.50$, $\langle L^2 \rangle = 0.33$	Xtriage
Outliers	0 of 76412 reflections	Xtriage
F_o, F_c correlation	0.94	EDS
Total number of atoms	10447	wwPDB-VP
Average B, all atoms (Å ²)	41.0	wwPDB-VP

Xtriage's analysis on translational NCS is as follows: *The largest off-origin peak in the Patterson function is 5.43% of the height of the origin peak. No significant pseudotranslation is detected.*

¹Intensities estimated from amplitudes.

²Theoretical values of $\langle |L| \rangle$, $\langle L^2 \rangle$ for acentric reflections are 0.5, 0.375 respectively for untwinned datasets, and 0.333, 0.2 for perfectly twinned datasets.

5 Model quality [i](#)

5.1 Standard geometry [i](#)

Bond lengths and bond angles in the following residue types are not validated in this section: ZN, BMA, NAG, CL, PE4, K26, 9X6, PG4, FUC, P6G, PEG

The Z score for a bond length (or angle) is the number of standard deviations the observed value is removed from the expected value. A bond length (or angle) with $|Z| > 5$ is considered an outlier worth inspection. RMSZ is the root-mean-square of all Z scores of the bond lengths (or angles).

Mol	Chain	Bond lengths		Bond angles	
		RMSZ	# $ Z > 5$	RMSZ	# $ Z > 5$
1	A	0.29	1/5137 (0.0%)	0.45	1/7002 (0.0%)
1	B	0.28	0/5118	0.46	0/6976
All	All	0.29	1/10255 (0.0%)	0.46	1/13978 (0.0%)

All (1) bond length outliers are listed below:

Mol	Chain	Res	Type	Atoms	Z	Observed(Å)	Ideal(Å)
1	A	126	LYS	CG-CD	-6.45	1.30	1.52

All (1) bond angle outliers are listed below:

Mol	Chain	Res	Type	Atoms	Z	Observed(°)	Ideal(°)
1	A	92	ILE	CB-CG1-CD1	-5.70	97.95	113.90

There are no chirality outliers.

There are no planarity outliers.

5.2 Too-close contacts [i](#)

In the following table, the Non-H and H(model) columns list the number of non-hydrogen atoms and hydrogen atoms in the chain respectively. The H(added) column lists the number of hydrogen atoms added and optimized by MolProbity. The Clashes column lists the number of clashes within the asymmetric unit, whereas Symm-Clashes lists symmetry related clashes.

Mol	Chain	Non-H	H(model)	H(added)	Clashes	Symm-Clashes
1	A	4980	0	4752	13	0
1	B	4961	0	4735	18	0
2	A	1	0	0	0	0
2	B	1	0	0	0	0

Continued on next page...

Continued from previous page...

Mol	Chain	Non-H	H(model)	H(added)	Clashes	Symm-Clashes
3	A	1	0	0	0	0
3	B	1	0	0	0	0
4	A	13	0	17	0	0
5	A	19	0	26	0	0
6	A	7	0	10	0	0
6	B	21	0	30	0	0
7	A	24	0	22	0	0
7	B	24	0	22	0	0
8	A	28	0	25	1	0
8	B	28	0	25	0	0
9	A	39	0	34	0	0
9	B	39	0	33	0	0
10	A	37	0	31	0	0
10	B	37	0	30	0	0
11	A	9	0	4	0	0
11	B	9	0	4	1	0
12	B	7	0	9	0	0
13	A	65	0	0	1	0
13	B	96	0	0	0	0
All	All	10447	0	9809	32	0

The all-atom clashscore is defined as the number of clashes found per 1000 atoms (including hydrogen atoms). The all-atom clashscore for this structure is 2.

The worst 5 of 32 close contacts within the same asymmetric unit are listed below, sorted by their clash magnitude.

Atom-1	Atom-2	Interatomic distance (Å)	Clash overlap (Å)
1:A:598:GLN:NE2	13:A:2064:HOH:O	2.19	0.65
1:A:326:ARG:HD3	8:A:803:NAG:H82	1.86	0.56
1:B:76:TYR:HD1	1:B:79:ILE:HD11	1.76	0.51
1:B:477:VAL:HG12	1:B:603:LEU:HD21	1.93	0.51
1:A:305:GLU:HG3	1:A:534:THR:HG22	1.93	0.50

There are no symmetry-related clashes.

5.3 Torsion angles

5.3.1 Protein backbone

In the following table, the Percentiles column shows the percent Ramachandran outliers of the chain as a percentile score with respect to all X-ray entries followed by that with respect to entries of similar resolution.

The Analysed column shows the number of residues for which the backbone conformation was analysed, and the total number of residues.

Mol	Chain	Analysed	Favoured	Allowed	Outliers	Percentiles	
1	A	610/629 (97%)	589 (97%)	21 (3%)	0	100	100
1	B	608/629 (97%)	592 (97%)	14 (2%)	2 (0%)	46	45
All	All	1218/1258 (97%)	1181 (97%)	35 (3%)	2 (0%)	52	53

All (2) Ramachandran outliers are listed below:

Mol	Chain	Res	Type
1	B	135	THR
1	B	81	GLN

5.3.2 Protein sidechains

In the following table, the Percentiles column shows the percent sidechain outliers of the chain as a percentile score with respect to all X-ray entries followed by that with respect to entries of similar resolution.

The Analysed column shows the number of residues for which the sidechain conformation was analysed, and the total number of residues.

Mol	Chain	Analysed	Rotameric	Outliers	Percentiles	
1	A	524/541 (97%)	518 (99%)	6 (1%)	80	85
1	B	521/541 (96%)	507 (97%)	14 (3%)	52	56
All	All	1045/1082 (97%)	1025 (98%)	20 (2%)	65	70

5 of 20 residues with a non-rotameric sidechain are listed below:

Mol	Chain	Res	Type
1	B	87	GLN
1	B	147	LEU
1	B	388	HIS
1	B	60	LEU

Continued on next page...

Continued from previous page...

Mol	Chain	Res	Type
1	B	81	GLN

Some sidechains can be flipped to improve hydrogen bonding and reduce clashes. 5 of 8 such sidechains are listed below:

Mol	Chain	Res	Type
1	A	568	GLN
1	B	526	HIS
1	B	81	GLN
1	A	553	GLN
1	A	582	GLN

5.3.3 RNA ⓘ

There are no RNA molecules in this entry.

5.4 Non-standard residues in protein, DNA, RNA chains ⓘ

There are no non-standard protein/DNA/RNA residues in this entry.

5.5 Carbohydrates ⓘ

14 carbohydrates are modelled in this entry.

In the following table, the Counts columns list the number of bonds (or angles) for which Mogul statistics could be retrieved, the number of bonds (or angles) that are observed in the model and the number of bonds (or angles) that are defined in the chemical component dictionary. The Link column lists molecule types, if any, to which the group is linked. The Z score for a bond length (or angle) is the number of standard deviations the observed value is removed from the expected value. A bond length (or angle) with $|Z| > 2$ is considered an outlier worth inspection. RMSZ is the root-mean-square of all Z scores of the bond lengths (or angles).

Mol	Type	Chain	Res	Link	Bond lengths			Bond angles		
					Counts	RMSZ	$\# Z > 2$	Counts	RMSZ	$\# Z > 2$
7	NAG	A	801	1,7	14,14,15	0.48	0	15,19,21	0.79	0
7	FUC	A	802	7	10,10,11	0.58	0	14,14,16	0.79	0
8	NAG	A	803	1,8	14,14,15	0.51	0	15,19,21	0.90	1 (6%)
8	NAG	A	804	8	14,14,15	0.48	0	15,19,21	0.72	0
9	NAG	A	805	1,9	14,14,15	0.46	0	15,19,21	0.76	0
9	NAG	A	806	9	14,14,15	0.52	0	15,19,21	0.59	0
9	BMA	A	807	9	11,11,12	0.29	0	14,15,17	0.56	0

Mol	Type	Chain	Res	Link	Bond lengths			Bond angles		
					Counts	RMSZ	# Z > 2	Counts	RMSZ	# Z > 2
7	NAG	B	801	1,7	14,14,15	0.49	0	15,19,21	0.76	0
7	FUC	B	802	7	10,10,11	0.58	0	14,14,16	0.79	0
8	NAG	B	803	1,8	14,14,15	0.51	0	15,19,21	0.96	1 (6%)
8	NAG	B	804	8	14,14,15	0.46	0	15,19,21	0.77	0
9	NAG	B	805	1,9	14,14,15	0.48	0	15,19,21	0.62	0
9	NAG	B	806	9	14,14,15	0.44	0	15,19,21	0.75	0
9	BMA	B	807	9	11,11,12	0.33	0	14,15,17	0.68	0

In the following table, the Chirals column lists the number of chiral outliers, the number of chiral centers analysed, the number of these observed in the model and the number defined in the chemical component dictionary. Similar counts are reported in the Torsion and Rings columns. '-' means no outliers of that kind were identified.

Mol	Type	Chain	Res	Link	Chirals	Torsions	Rings
7	NAG	A	801	1,7	-	0/6/23/26	0/1/1/1
7	FUC	A	802	7	-	0/0/17/20	0/1/1/1
8	NAG	A	803	1,8	-	0/6/23/26	0/1/1/1
8	NAG	A	804	8	-	0/6/23/26	0/1/1/1
9	NAG	A	805	1,9	-	0/6/23/26	0/1/1/1
9	NAG	A	806	9	-	0/6/23/26	0/1/1/1
9	BMA	A	807	9	-	0/2/19/22	0/1/1/1
7	NAG	B	801	1,7	-	0/6/23/26	0/1/1/1
7	FUC	B	802	7	-	0/0/17/20	0/1/1/1
8	NAG	B	803	1,8	-	0/6/23/26	0/1/1/1
8	NAG	B	804	8	-	0/6/23/26	0/1/1/1
9	NAG	B	805	1,9	-	0/6/23/26	0/1/1/1
9	NAG	B	806	9	-	0/6/23/26	0/1/1/1
9	BMA	B	807	9	-	0/2/19/22	0/1/1/1

There are no bond length outliers.

All (2) bond angle outliers are listed below:

Mol	Chain	Res	Type	Atoms	Z	Observed(°)	Ideal(°)
8	A	803	NAG	C1-O5-C5	2.10	114.92	112.25
8	B	803	NAG	C1-O5-C5	2.71	115.68	112.25

There are no chirality outliers.

There are no torsion outliers.

There are no ring outliers.

1 monomer is involved in 1 short contact:

Mol	Chain	Res	Type	Clashes	Symm-Clashes
8	A	803	NAG	1	0

5.6 Ligand geometry

Of 15 ligands modelled in this entry, 4 are monoatomic - leaving 11 for Mogul analysis.

In the following table, the Counts columns list the number of bonds (or angles) for which Mogul statistics could be retrieved, the number of bonds (or angles) that are observed in the model and the number of bonds (or angles) that are defined in the chemical component dictionary. The Link column lists molecule types, if any, to which the group is linked. The Z score for a bond length (or angle) is the number of standard deviations the observed value is removed from the expected value. A bond length (or angle) with $|Z| > 2$ is considered an outlier worth inspection. RMSZ is the root-mean-square of all Z scores of the bond lengths (or angles).

Mol	Type	Chain	Res	Link	Bond lengths			Bond angles		
					Counts	RMSZ	# Z > 2	Counts	RMSZ	# Z > 2
10	K26	A	1001	2	37,38,38	1.60	4 (10%)	46,53,53	1.19	4 (8%)
11	9X6	A	1613	-	2,8,8	3.19	2 (100%)	3,9,9	1.75	1 (33%)
4	PE4	A	703	-	12,12,23	0.47	0	11,11,22	0.18	0
5	P6G	A	704	-	18,18,18	0.50	0	17,17,17	0.18	0
6	PEG	A	705	-	6,6,6	0.47	0	5,5,5	0.24	0
10	K26	B	1001	2	37,38,38	1.63	4 (10%)	46,53,53	1.24	3 (6%)
12	PG4	B	1611	-	6,6,12	0.45	0	5,5,11	0.20	0
11	9X6	B	1612	-	2,8,8	2.80	2 (100%)	3,9,9	3.03	1 (33%)
6	PEG	B	703	-	6,6,6	0.50	0	5,5,5	0.26	0
6	PEG	B	704	-	6,6,6	0.43	0	5,5,5	0.27	0
6	PEG	B	705	-	6,6,6	0.46	0	5,5,5	0.27	0

In the following table, the Chirals column lists the number of chiral outliers, the number of chiral centers analysed, the number of these observed in the model and the number defined in the chemical component dictionary. Similar counts are reported in the Torsion and Rings columns. '-' means no outliers of that kind were identified.

Mol	Type	Chain	Res	Link	Chirals	Torsions	Rings
10	K26	A	1001	2	-	0/40/40/40	0/2/2/2
11	9X6	A	1613	-	-	0/2/6/6	0/0/0/0
4	PE4	A	703	-	-	0/10/10/21	0/0/0/0
5	P6G	A	704	-	-	0/16/16/16	0/0/0/0
6	PEG	A	705	-	-	0/4/4/4	0/0/0/0
10	K26	B	1001	2	-	0/40/40/40	0/2/2/2
12	PG4	B	1611	-	-	0/4/4/10	0/0/0/0
11	9X6	B	1612	-	-	0/2/6/6	0/0/0/0
6	PEG	B	703	-	-	0/4/4/4	0/0/0/0

Continued on next page...

Continued from previous page...

Mol	Type	Chain	Res	Link	Chirals	Torsions	Rings
6	PEG	B	704	-	-	0/4/4/4	0/0/0/0
6	PEG	B	705	-	-	0/4/4/4	0/0/0/0

The worst 5 of 12 bond length outliers are listed below:

Mol	Chain	Res	Type	Atoms	Z	Observed(Å)	Ideal(Å)
10	B	1001	K26	PBK-OAJ	-5.20	1.46	1.54
10	A	1001	K26	PBK-OAJ	-5.11	1.46	1.54
10	B	1001	K26	PBK-OAK	-5.03	1.46	1.54
10	A	1001	K26	PBK-OAK	-4.95	1.46	1.54
10	B	1001	K26	CAV-CBF	-4.11	1.41	1.51

The worst 5 of 9 bond angle outliers are listed below:

Mol	Chain	Res	Type	Atoms	Z	Observed(°)	Ideal(°)
10	B	1001	K26	OAG-PBK-CBI	-6.17	101.13	113.97
10	A	1001	K26	OAG-PBK-CBI	-5.60	102.32	113.97
10	A	1001	K26	C-CA-N	-2.63	103.84	111.26
10	B	1001	K26	C-CA-N	-2.20	105.06	111.26
10	A	1001	K26	CG-CB-CA	-2.07	107.38	113.41

There are no chirality outliers.

There are no torsion outliers.

There are no ring outliers.

1 monomer is involved in 1 short contact:

Mol	Chain	Res	Type	Clashes	Symm-Clashes
11	B	1612	9X6	1	0

5.7 Other polymers ⓘ

There are no such residues in this entry.

5.8 Polymer linkage issues ⓘ

There are no chain breaks in this entry.

6 Fit of model and data [i](#)

6.1 Protein, DNA and RNA chains [i](#)

In the following table, the column labelled ‘#RSRZ> 2’ contains the number (and percentage) of RSRZ outliers, followed by percent RSRZ outliers for the chain as percentile scores relative to all X-ray entries and entries of similar resolution. The OWAB column contains the minimum, median, 95th percentile and maximum values of the occupancy-weighted average B-factor per residue. The column labelled ‘Q< 0.9’ lists the number of (and percentage) of residues with an average occupancy less than 0.9.

Mol	Chain	Analysed	<RSRZ>	#RSRZ>2		OWAB(Å ²)	Q<0.9
1	A	612/629 (97%)	0.45	41 (6%)	21 28	22, 40, 70, 102	2 (0%)
1	B	610/629 (96%)	0.21	27 (4%)	38 47	22, 36, 61, 89	1 (0%)
All	All	1222/1258 (97%)	0.33	68 (5%)	28 36	22, 38, 65, 102	3 (0%)

The worst 5 of 68 RSRZ outliers are listed below:

Mol	Chain	Res	Type	RSRZ
1	A	610	GLY	8.4
1	B	610	GLY	8.0
1	A	133	THR	7.6
1	A	134	ALA	6.8
1	A	132	LYS	6.6

6.2 Non-standard residues in protein, DNA, RNA chains [i](#)

There are no non-standard protein/DNA/RNA residues in this entry.

6.3 Carbohydrates [i](#)

In the following table, the Atoms column lists the number of modelled atoms in the group and the number defined in the chemical component dictionary. LLDF column lists the quality of electron density of the group with respect to its neighbouring residues in protein, DNA or RNA chains. The B-factors column lists the minimum, median, 95th percentile and maximum values of B factors of atoms in the group. The column labelled ‘Q< 0.9’ lists the number of atoms with occupancy less than 0.9.

Mol	Type	Chain	Res	Atoms	RSCC	RSR	LLDF	B-factors(Å ²)	Q<0.9
7	NAG	A	801	14/15	0.88	0.14	0.41	50,53,59,64	0
7	NAG	B	801	14/15	0.84	0.15	0.30	47,50,55,60	0
9	NAG	B	805	14/15	0.86	0.14	0.09	56,58,62,62	0

Continued on next page...

Continued from previous page...

Mol	Type	Chain	Res	Atoms	RSCC	RSR	LLDF	B-factors(\AA^2)	Q<0.9
8	NAG	B	803	14/15	0.90	0.13	-0.29	49,50,51,52	0
9	NAG	A	805	14/15	0.85	0.17	-	74,75,76,78	0
7	FUC	A	802	10/11	0.58	0.44	-	68,70,71,71	0
8	NAG	B	804	14/15	0.90	0.26	-	54,55,57,58	0
8	NAG	A	804	14/15	0.85	0.48	-	73,76,78,79	0
7	FUC	B	802	10/11	0.75	0.36	-	63,64,65,66	0
9	NAG	A	806	14/15	0.83	0.27	-	81,82,85,87	0
9	BMA	B	807	11/12	0.66	0.31	-	72,74,74,74	0
8	NAG	A	803	14/15	0.91	0.28	-	56,61,63,68	0
9	BMA	A	807	11/12	0.72	0.40	-	89,91,92,93	0
9	NAG	B	806	14/15	0.91	0.17	-	65,67,69,70	0

6.4 Ligands [i](#)

In the following table, the Atoms column lists the number of modelled atoms in the group and the number defined in the chemical component dictionary. LLDF column lists the quality of electron density of the group with respect to its neighbouring residues in protein, DNA or RNA chains. The B-factors column lists the minimum, median, 95th percentile and maximum values of B factors of atoms in the group. The column labelled 'Q< 0.9' lists the number of atoms with occupancy less than 0.9.

Mol	Type	Chain	Res	Atoms	RSCC	RSR	LLDF	B-factors(\AA^2)	Q<0.9
6	PEG	B	704	7/7	0.84	0.18	3.93	58,59,61,62	0
11	9X6	B	1612	9/9	0.86	0.21	1.64	41,43,44,47	0
5	P6G	A	704	19/19	0.80	0.17	1.41	53,56,57,57	0
4	PE4	A	703	13/24	0.86	0.13	0.99	43,45,51,51	0
11	9X6	A	1613	9/9	0.86	0.20	0.63	37,39,40,42	0
10	K26	B	1001	37/37	0.94	0.16	0.60	26,31,36,37	0
10	K26	A	1001	37/37	0.94	0.17	0.27	25,30,33,34	0
12	PG4	B	1611	7/13	0.89	0.13	-0.21	48,49,49,49	0
3	CL	B	702	1/1	0.99	0.10	-1.72	27,27,27,27	0
3	CL	A	702	1/1	0.99	0.05	-3.77	29,29,29,29	0
2	ZN	B	701	1/1	0.98	0.10	-	37,37,37,37	0
6	PEG	A	705	7/7	0.79	0.17	-	54,55,55,56	0
6	PEG	B	705	7/7	0.74	0.17	-	52,53,53,53	0
6	PEG	B	703	7/7	0.81	0.18	-	44,46,47,47	0
2	ZN	A	701	1/1	0.99	0.06	-	35,35,35,35	0

6.5 Other polymers [i](#)

There are no such residues in this entry.