



Full wwPDB X-ray Structure Validation Report ⓘ

Feb 1, 2016 – 03:16 PM GMT

PDB ID : 4C02
Title : Crystal structure of human ACVR1 (ALK2) in complex with FKBP12.6 and dorsomorphin
Authors : Williams, E.; Riesebo, E.; Vollmar, M.; Krojer, T.; Bradley, A.; Shrestha, L.; Kupinska, K.; von Delft, F.; Arrowsmith, C.H.; Edwards, A.M.; Bountra, C.; Bullock, A.
Deposited on : 2013-07-31
Resolution : 2.17 Å(reported)

This is a Full wwPDB X-ray Structure Validation Report for a publicly released PDB entry.
We welcome your comments at validation@mail.wwpdb.org
A user guide is available at
<http://wwpdb.org/validation/2016/XrayValidationReportHelp>
with specific help available everywhere you see the ⓘ symbol.

The following versions of software and data (see [references ⓘ](#)) were used in the production of this report:

MolProbity : 4.02b-467
Mogul : 1.7 (RC4), CSD as536be (2015)
Xtriage (Phenix) : 1.9-1692
EDS : rb-20026688
Percentile statistics : 20151230.v01 (using entries in the PDB archive December 30th 2015)
Refmac : 5.8.0135
CCP4 : 6.5.0
Ideal geometry (proteins) : Engh & Huber (2001)
Ideal geometry (DNA, RNA) : Parkinson et al. (1996)
Validation Pipeline (wwPDB-VP) : trunk26865

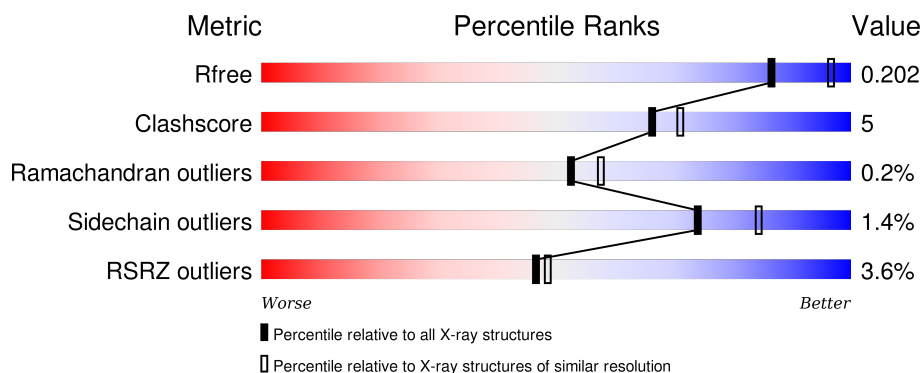
1 Overall quality at a glance

The following experimental techniques were used to determine the structure:

X-RAY DIFFRACTION



The reported resolution of this entry is 2.17 Å.

Percentile scores (ranging between 0-100) for global validation metrics of the entry are shown in the following graphic. The table shows the number of entries on which the scores are based.



Metric	Whole archive (#Entries)	Similar resolution (#Entries, resolution range(Å))
R_{free}	91344	5130 (2.20-2.16)
Clashscore	102246	5965 (2.20-2.16)
Ramachandran outliers	100387	5863 (2.20-2.16)
Sidechain outliers	100360	5864 (2.20-2.16)
RSRZ outliers	91569	5142 (2.20-2.16)

The table below summarises the geometric issues observed across the polymeric chains and their fit to the electron density. The red, orange, yellow and green segments on the lower bar indicate the fraction of residues that contain outliers for ≥ 3 , 2, 1 and 0 types of geometric quality criteria. A grey segment represents the fraction of residues that are not modelled. The numeric value for each fraction is indicated below the corresponding segment, with a dot representing fractions $\leq 5\%$. The upper red bar (where present) indicates the fraction of residues that have poor fit to the electron density. The numeric value is given above the bar.

Mol	Chain	Length	Quality of chain
1	A	330	 4% 83% 12% 5%
2	B	108	 2% 89% 11%

The following table lists non-polymeric compounds, carbohydrate monomers and non-standard residues in protein, DNA, RNA chains that are outliers for geometric or electron-density-fit criteria:

Mol	Type	Chain	Res	Chirality	Geometry	Clashes	Electron density
3	FLC	A	1500	-	-	-	X
3	FLC	A	1505	-	-	-	X
3	FLC	A	1506	-	-	-	X
3	FLC	B	1108	-	-	-	X
5	EDO	A	1509	-	-	-	X
5	EDO	A	1511	-	-	-	X
5	EDO	A	1512	-	-	-	X
5	EDO	A	1516	-	-	-	X
5	EDO	B	1110	-	-	-	X
5	EDO	B	1111	-	-	-	X
5	EDO	B	1112	-	-	-	X

2 Entry composition [i](#)

There are 6 unique types of molecules in this entry. The entry contains 3756 atoms, of which 0 are hydrogens and 0 are deuteriums.

In the tables below, the ZeroOcc column contains the number of atoms modelled with zero occupancy, the AltConf column contains the number of residues with at least one atom in alternate conformation and the Trace column contains the number of residues modelled with at most 2 atoms.

- Molecule 1 is a protein called ACTIVIN RECEPTOR TYPE-1.

Mol	Chain	Residues	Atoms					ZeroOcc	AltConf	Trace
			Total	C	N	O	S			
1	A	313	2520	1618	428	459	15	0	11	0

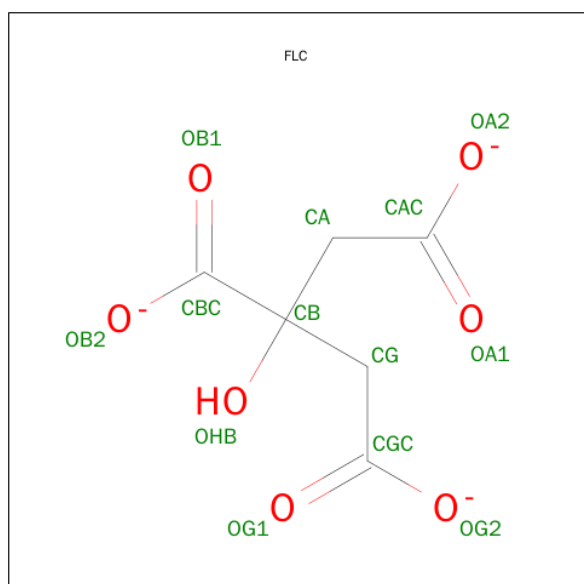
There are 2 discrepancies between the modelled and reference sequences:

Chain	Residue	Modelled	Actual	Comment	Reference
A	170	SER	-	EXPRESSION TAG	UNP Q04771
A	171	MET	-	EXPRESSION TAG	UNP Q04771

- Molecule 2 is a protein called PEPTIDYL-PROLYL CIS-TRANS ISOMERASE FKBP1B.

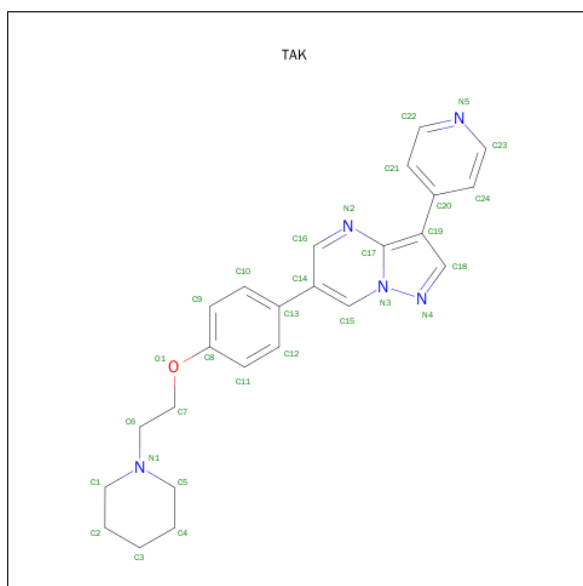
Mol	Chain	Residues	Atoms					ZeroOcc	AltConf	Trace
			Total	C	N	O	S			
2	B	108	826	523	142	155	6	0	2	0

- Molecule 3 is CITRATE ANION (three-letter code: FLC) (formula: $C_6H_5O_7$).



Mol	Chain	Residues	Atoms			ZeroOcc	AltConf
3	A	1	Total	C	O	0	0
			13	6	7		
3	A	1	Total	C	O	0	0
			13	6	7		
3	A	1	Total	C	O	0	0
			13	6	7		
3	A	1	Total	C	O	0	0
			13	6	7		
3	A	1	Total	C	O	0	0
			13	6	7		
3	A	1	Total	C	O	0	0
			13	6	7		
3	B	1	Total	C	O	0	0
			13	6	7		

- Molecule 4 is 6-[4-(2-PIPERIDIN-1-YLETHOXY)PHENYL]-3-PYRIDIN-4-YLPYRAZOL O[1,5-A]PYRIMIDINE (three-letter code: TAK) (formula: C₂₄H₂₅N₅O).



Mol	Chain	Residues	Atoms				ZeroOcc	AltConf
4	A	1	Total	C	N	O	0	0
			23	18	4	1		

- Molecule 5 is 1,2-ETHANEDIOL (three-letter code: EDO) (formula: C₂H₆O₂).



Mol	Chain	Residues	Atoms			ZeroOcc	AltConf
5	A	1	Total	C	O	0	0
			4	2	2		
5	A	1	Total	C	O	0	0
			4	2	2		
5	A	1	Total	C	O	0	0
			4	2	2		
5	A	1	Total	C	O	0	0
			4	2	2		
5	A	1	Total	C	O	0	0
			4	2	2		
5	A	1	Total	C	O	0	0
			4	2	2		
5	A	1	Total	C	O	0	0
			4	2	2		
5	B	1	Total	C	O	0	0
			4	2	2		
5	B	1	Total	C	O	0	0
			4	2	2		
5	B	1	Total	C	O	0	0
			4	2	2		
5	B	1	Total	C	O	0	0
			4	2	2		

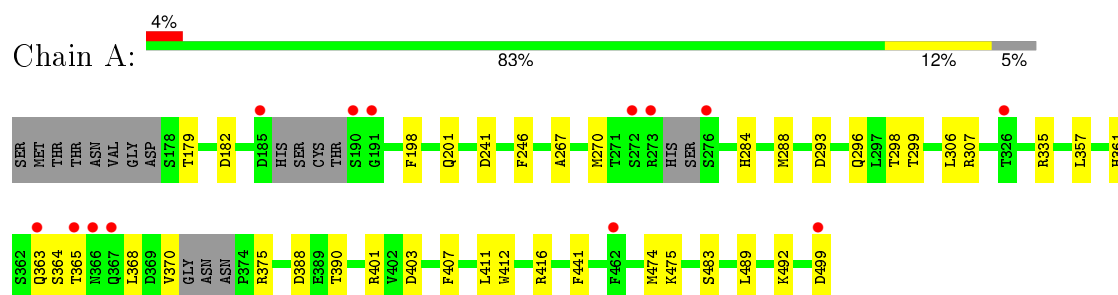
- Molecule 6 is water.

Mol	Chain	Residues	Atoms		ZeroOcc	AltConf
6	A	189	Total 189	O 189	0	0
6	B	42	Total 42	O 42	0	0

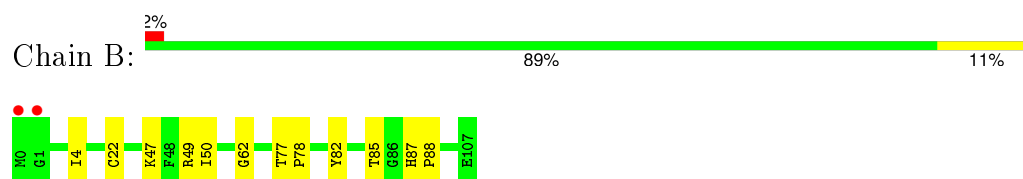
3 Residue-property plots [i](#)

These plots are drawn for all protein, RNA and DNA chains in the entry. The first graphic for a chain summarises the proportions of errors displayed in the second graphic. The second graphic shows the sequence view annotated by issues in geometry and electron density. Residues are color-coded according to the number of geometric quality criteria for which they contain at least one outlier: green = 0, yellow = 1, orange = 2 and red = 3 or more. A red dot above a residue indicates a poor fit to the electron density ($\text{RSRZ} > 2$). Stretches of 2 or more consecutive residues without any outlier are shown as a green connector. Residues present in the sample, but not in the model, are shown in grey.

• Molecule 1: ACTIVIN RECEPTOR TYPE-1



• Molecule 2: PEPTIDYL-PROLYL CIS-TRANS ISOMERASE FKBP1B



4 Data and refinement statistics

Property	Value	Source
Space group	P 41 3 2	Depositor
Cell constants a, b, c, α , β , γ	182.33Å 182.33Å 182.33Å 90.00° 90.00° 90.00°	Depositor
Resolution (Å)	39.82 – 2.17 39.79 – 2.17	Depositor EDS
% Data completeness (in resolution range)	99.8 (39.82-2.17) 99.8 (39.79-2.17)	Depositor EDS
R_{merge}	0.17	Depositor
R_{sym}	(Not available)	Depositor
$\langle I/\sigma(I) \rangle$ ¹	1.86 (at 2.18Å)	Xtriage
Refinement program	REFMAC 5.7.0032	Depositor
R, R_{free}	0.177 , 0.198 0.183 , 0.202	Depositor DCC
R_{free} test set	2787 reflections (5.34%)	DCC
Wilson B-factor (Å ²)	33.2	Xtriage
Anisotropy	0.000	Xtriage
Bulk solvent k_{sol} (e/Å ³), B_{sol} (Å ²)	0.34 , 35.2	EDS
Estimated twinning fraction	No twinning to report.	Xtriage
L-test for twinning ²	$\langle L \rangle = 0.49$, $\langle L^2 \rangle = 0.32$	Xtriage
Outliers	1 of 54946 reflections (0.002%)	Xtriage
F_o, F_c correlation	0.96	EDS
Total number of atoms	3756	wwPDB-VP
Average B, all atoms (Å ²)	37.0	wwPDB-VP

Xtriage's analysis on translational NCS is as follows: *The largest off-origin peak in the Patterson function is 2.27% of the height of the origin peak. No significant pseudotranslation is detected.*

¹Intensities estimated from amplitudes.

²Theoretical values of $\langle |L| \rangle$, $\langle L^2 \rangle$ for acentric reflections are 0.5, 0.375 respectively for untwinned datasets, and 0.333, 0.2 for perfectly twinned datasets.

5 Model quality

5.1 Standard geometry

Bond lengths and bond angles in the following residue types are not validated in this section: FLC, EDO, TAK

The Z score for a bond length (or angle) is the number of standard deviations the observed value is removed from the expected value. A bond length (or angle) with $|Z| > 5$ is considered an outlier worth inspection. RMSZ is the root-mean-square of all Z scores of the bond lengths (or angles).

Mol	Chain	Bond lengths		Bond angles	
		RMSZ	$\# Z > 5$	RMSZ	$\# Z > 5$
1	A	0.60	0/2594	0.73	2/3520 (0.1%)
2	B	0.60	0/848	0.73	0/1144
All	All	0.60	0/3442	0.73	2/4664 (0.0%)

There are no bond length outliers.

All (2) bond angle outliers are listed below:

Mol	Chain	Res	Type	Atoms	Z	Observed(°)	Ideal(°)
1	A	474	MET	CG-SD-CE	-5.83	90.88	100.20
1	A	403	ASP	CB-CG-OD1	5.29	123.06	118.30

There are no chirality outliers.

There are no planarity outliers.

5.2 Too-close contacts

In the following table, the Non-H and H(model) columns list the number of non-hydrogen atoms and hydrogen atoms in the chain respectively. The H(added) column lists the number of hydrogen atoms added and optimized by MolProbity. The Clashes column lists the number of clashes within the asymmetric unit, whereas Symm-Clashes lists symmetry related clashes.

Mol	Chain	Non-H	H(model)	H(added)	Clashes	Symm-Clashes
1	A	2520	0	2488	27	0
2	B	826	0	824	10	0
3	A	91	0	35	3	0
3	B	13	0	5	2	0
4	A	23	0	11	0	0
5	A	36	0	54	3	0
5	B	16	0	24	1	0

Continued on next page...

Continued from previous page...

Mol	Chain	Non-H	H(model)	H(added)	Clashes	Symm-Clashes
6	A	189	0	0	4	1
6	B	42	0	0	0	1
All	All	3756	0	3441	34	1

The all-atom clashscore is defined as the number of clashes found per 1000 atoms (including hydrogen atoms). The all-atom clashscore for this structure is 5.

All (34) close contacts within the same asymmetric unit are listed below, sorted by their clash magnitude.

Atom-1	Atom-2	Interatomic distance (Å)	Clash overlap (Å)
1:A:407[B]:PHE:CE1	1:A:411[B]:LEU:HD11	2.12	0.85
1:A:407[B]:PHE:HE1	1:A:411[B]:LEU:HD11	1.42	0.84
3:A:1502:FLC:OA1	3:A:1502:FLC:OB1	2.08	0.72
1:A:307:ARG:NH1	6:A:2060:HOH:O	2.31	0.62
1:A:293:ASP:OD2	6:A:2047:HOH:O	2.16	0.61
2:B:22[A]:CYS:SG	2:B:50:ILE:HD11	2.44	0.57
1:A:375:ARG:HD2	1:A:441:PHE:CE1	2.40	0.56
1:A:407[B]:PHE:CE1	1:A:411[B]:LEU:CD1	2.89	0.54
1:A:483[A]:SER:OG	6:A:2178:HOH:O	2.18	0.54
1:A:198[B]:PHE:CE1	2:B:87:HIS:CD2	2.96	0.53
1:A:284:HIS:HB2	5:A:1513:EDO:H11	1.90	0.52
1:A:198[B]:PHE:HE1	2:B:87:HIS:CD2	2.28	0.51
1:A:298:THR:HG22	1:A:299:THR:O	2.14	0.47
1:A:388[B]:ASP:OD1	1:A:390:THR:HG23	2.15	0.46
1:A:492:LYS:HZ3	3:A:1500:FLC:CBC	2.29	0.46
1:A:201:GLN:HB3	1:A:267:ALA:HB1	1.99	0.45
1:A:246:PHE:CD2	2:B:88:PRO:HG3	2.52	0.44
1:A:361:HIS:ND1	6:A:2101:HOH:O	2.36	0.44
1:A:270:MET:CE	3:B:1108:FLC:HG2	2.48	0.44
1:A:489:LEU:HD23	3:A:1505:FLC:HA2	2.00	0.43
1:A:306:LEU:HD13	1:A:499:ASP:HA	2.01	0.43
1:A:368[B]:LEU:HD12	1:A:368[B]:LEU:HA	1.83	0.43
1:A:179:THR:HG23	1:A:182:ASP:H	1.84	0.43
1:A:401:ARG:HD2	5:A:1509:EDO:H21	2.01	0.42
2:B:50:ILE:HG22	5:B:1112:EDO:H12	2.01	0.42
1:A:363:GLN:O	1:A:365:THR:N	2.50	0.42
1:A:475:LYS:HE2	5:A:1512:EDO:H12	2.02	0.41
2:B:77:THR:HB	2:B:78:PRO:HD2	2.02	0.41
1:A:335:ARG:HD3	1:A:357:LEU:O	2.21	0.41
2:B:85:THR:H	3:B:1108:FLC:HOB	1.68	0.41
1:A:198[B]:PHE:CZ	2:B:82:TYR:CZ	3.09	0.40

Continued on next page...

Continued from previous page...

Atom-1	Atom-2	Interatomic distance (Å)	Clash overlap (Å)
2:B:4[A]:ILE:HD11	2:B:62:GLY:HA2	2.03	0.40
1:A:412:TRP:CZ2	1:A:416:ARG:HD2	2.56	0.40

All (1) symmetry-related close contacts are listed below. The label for Atom-2 includes the symmetry operator and encoded unit-cell translations to be applied.

Atom-1	Atom-2	Interatomic distance (Å)	Clash overlap (Å)
6:A:2176:HOH:O	6:B:2037:HOH:O[6_445]	1.79	0.41

5.3 Torsion angles [i](#)

5.3.1 Protein backbone [i](#)

In the following table, the Percentiles column shows the percent Ramachandran outliers of the chain as a percentile score with respect to all X-ray entries followed by that with respect to entries of similar resolution.

The Analysed column shows the number of residues for which the backbone conformation was analysed, and the total number of residues.

Mol	Chain	Analysed	Favoured	Allowed	Outliers	Percentiles	
1	A	316/330 (96%)	307 (97%)	8 (2%)	1 (0%)	46	48
2	B	108/108 (100%)	105 (97%)	3 (3%)	0	100	100
All	All	424/438 (97%)	412 (97%)	11 (3%)	1 (0%)	52	57

All (1) Ramachandran outliers are listed below:

Mol	Chain	Res	Type
1	A	364	SER

5.3.2 Protein sidechains [i](#)

In the following table, the Percentiles column shows the percent sidechain outliers of the chain as a percentile score with respect to all X-ray entries followed by that with respect to entries of similar resolution.

The Analysed column shows the number of residues for which the sidechain conformation was analysed, and the total number of residues.

Mol	Chain	Analysed	Rotameric	Outliers	Percentiles	
1	A	273/294 (93%)	269 (98%)	4 (2%)	72	82
2	B	88/89 (99%)	87 (99%)	1 (1%)	80	88
All	All	361/383 (94%)	356 (99%)	5 (1%)	74	84

All (5) residues with a non-rotameric sidechain are listed below:

Mol	Chain	Res	Type
1	A	241	ASP
1	A	288	MET
1	A	296	GLN
1	A	370	VAL
2	B	49	ARG

Some sidechains can be flipped to improve hydrogen bonding and reduce clashes. All (1) such sidechains are listed below:

Mol	Chain	Res	Type
2	B	87	HIS

5.3.3 RNA [i](#)

There are no RNA molecules in this entry.

5.4 Non-standard residues in protein, DNA, RNA chains [i](#)

There are no non-standard protein/DNA/RNA residues in this entry.

5.5 Carbohydrates [i](#)

There are no carbohydrates in this entry.

5.6 Ligand geometry [i](#)

22 ligands are modelled in this entry.

In the following table, the Counts columns list the number of bonds (or angles) for which Mogul statistics could be retrieved, the number of bonds (or angles) that are observed in the model and the number of bonds (or angles) that are defined in the chemical component dictionary. The Link column lists molecule types, if any, to which the group is linked. The Z score for a bond length (or angle) is the number of standard deviations the observed value is removed from the expected

value. A bond length (or angle) with $|Z| > 2$ is considered an outlier worth inspection. RMSZ is the root-mean-square of all Z scores of the bond lengths (or angles).

Mol	Type	Chain	Res	Link	Bond lengths			Bond angles		
					Counts	RMSZ	$\# Z > 2$	Counts	RMSZ	$\# Z > 2$
3	FLC	A	1500	-	3,12,12	1.96	1 (33%)	3,17,17	1.33	0
3	FLC	A	1501	-	3,12,12	1.01	0	3,17,17	1.24	0
3	FLC	A	1502	-	3,12,12	1.32	1 (33%)	3,17,17	2.88	1 (33%)
3	FLC	A	1503	-	3,12,12	1.60	0	3,17,17	2.04	1 (33%)
3	FLC	A	1504	-	3,12,12	0.73	0	3,17,17	5.01	2 (66%)
3	FLC	A	1505	-	3,12,12	1.04	0	3,17,17	1.42	0
3	FLC	A	1506	-	3,12,12	1.18	0	3,17,17	1.16	0
4	TAK	A	1507	-	21,26,34	1.68	4 (19%)	25,36,46	1.49	5 (20%)
5	EDO	A	1508	-	3,3,3	0.48	0	2,2,2	0.50	0
5	EDO	A	1509	-	3,3,3	0.54	0	2,2,2	0.55	0
5	EDO	A	1510	-	3,3,3	0.63	0	2,2,2	0.21	0
5	EDO	A	1511	-	3,3,3	0.55	0	2,2,2	0.51	0
5	EDO	A	1512	-	3,3,3	0.66	0	2,2,2	0.15	0
5	EDO	A	1513	-	3,3,3	0.45	0	2,2,2	0.36	0
5	EDO	A	1514	-	3,3,3	0.54	0	2,2,2	0.35	0
5	EDO	A	1515	-	3,3,3	0.50	0	2,2,2	0.20	0
5	EDO	A	1516	-	3,3,3	0.45	0	2,2,2	0.97	0
3	FLC	B	1108	-	3,12,12	1.16	0	3,17,17	2.94	1 (33%)
5	EDO	B	1109	-	3,3,3	0.60	0	2,2,2	0.27	0
5	EDO	B	1110	-	3,3,3	0.99	0	2,2,2	0.41	0
5	EDO	B	1111	-	3,3,3	0.73	0	2,2,2	0.42	0
5	EDO	B	1112	-	3,3,3	0.76	0	2,2,2	0.48	0

In the following table, the Chirals column lists the number of chiral outliers, the number of chiral centers analysed, the number of these observed in the model and the number defined in the chemical component dictionary. Similar counts are reported in the Torsion and Rings columns. '-' means no outliers of that kind were identified.

Mol	Type	Chain	Res	Link	Chirals	Torsions	Rings
3	FLC	A	1500	-	-	0/6/16/16	0/0/0/0
3	FLC	A	1501	-	-	0/6/16/16	0/0/0/0
3	FLC	A	1502	-	-	0/6/16/16	0/0/0/0
3	FLC	A	1503	-	-	0/6/16/16	0/0/0/0
3	FLC	A	1504	-	-	0/6/16/16	0/0/0/0
3	FLC	A	1505	-	-	0/6/16/16	0/0/0/0
3	FLC	A	1506	-	-	0/6/16/16	0/0/0/0
4	TAK	A	1507	-	-	0/10/10/22	0/4/4/5
5	EDO	A	1508	-	-	0/1/1/1	0/0/0/0

Continued on next page...

Continued from previous page...

Mol	Type	Chain	Res	Link	Chirals	Torsions	Rings
5	EDO	A	1509	-	-	0/1/1/1	0/0/0/0
5	EDO	A	1510	-	-	0/1/1/1	0/0/0/0
5	EDO	A	1511	-	-	0/1/1/1	0/0/0/0
5	EDO	A	1512	-	-	0/1/1/1	0/0/0/0
5	EDO	A	1513	-	-	0/1/1/1	0/0/0/0
5	EDO	A	1514	-	-	0/1/1/1	0/0/0/0
5	EDO	A	1515	-	-	0/1/1/1	0/0/0/0
5	EDO	A	1516	-	-	0/1/1/1	0/0/0/0
3	FLC	B	1108	-	-	0/6/16/16	0/0/0/0
5	EDO	B	1109	-	-	0/1/1/1	0/0/0/0
5	EDO	B	1110	-	-	0/1/1/1	0/0/0/0
5	EDO	B	1111	-	-	0/1/1/1	0/0/0/0
5	EDO	B	1112	-	-	0/1/1/1	0/0/0/0

All (6) bond length outliers are listed below:

Mol	Chain	Res	Type	Atoms	Z	Observed(Å)	Ideal(Å)
4	A	1507	TAK	C19-C20	-5.22	1.40	1.49
3	A	1502	FLC	OHB-CB	2.09	1.46	1.43
4	A	1507	TAK	C16-N2	2.28	1.35	1.31
4	A	1507	TAK	C17-N2	2.66	1.39	1.35
3	A	1500	FLC	OHB-CB	2.97	1.47	1.43
4	A	1507	TAK	O1-C8	3.18	1.44	1.37

All (10) bond angle outliers are listed below:

Mol	Chain	Res	Type	Atoms	Z	Observed(°)	Ideal(°)
3	A	1504	FLC	CB-CG-CGC	-6.24	104.97	114.96
3	A	1503	FLC	CB-CA-CAC	-2.92	110.28	114.96
4	A	1507	TAK	C14-C16-N2	-2.86	121.84	125.46
4	A	1507	TAK	C21-C22-N5	-2.72	118.90	123.64
4	A	1507	TAK	C23-N5-C22	2.10	121.91	116.83
4	A	1507	TAK	C16-N2-C17	2.70	120.43	116.86
4	A	1507	TAK	C18-N4-N3	3.22	106.12	103.70
3	A	1502	FLC	CG-CB-CA	4.59	120.79	109.81
3	B	1108	FLC	CB-CG-CGC	4.87	122.74	114.96
3	A	1504	FLC	CG-CB-CA	5.94	124.01	109.81

There are no chirality outliers.

There are no torsion outliers.

There are no ring outliers.

8 monomers are involved in 9 short contacts:

Mol	Chain	Res	Type	Clashes	Symm-Clashes
3	A	1500	FLC	1	0
3	A	1502	FLC	1	0
3	A	1505	FLC	1	0
5	A	1509	EDO	1	0
5	A	1512	EDO	1	0
5	A	1513	EDO	1	0
3	B	1108	FLC	2	0
5	B	1112	EDO	1	0

5.7 Other polymers [i](#)

There are no such residues in this entry.

5.8 Polymer linkage issues [i](#)

There are no chain breaks in this entry.

6 Fit of model and data [i](#)

6.1 Protein, DNA and RNA chains [i](#)

In the following table, the column labelled ‘#RSRZ> 2’ contains the number (and percentage) of RSRZ outliers, followed by percent RSRZ outliers for the chain as percentile scores relative to all X-ray entries and entries of similar resolution. The OWAB column contains the minimum, median, 95th percentile and maximum values of the occupancy-weighted average B-factor per residue. The column labelled ‘Q< 0.9’ lists the number of (and percentage) of residues with an average occupancy less than 0.9.

Mol	Chain	Analysed	<RSRZ>	#RSRZ>2	OWAB(Å ²)	Q<0.9
1	A	313/330 (94%)	-0.08	13 (4%) 40 42	20, 31, 75, 113	0
2	B	108/108 (100%)	-0.45	2 (1%) 70 71	24, 37, 57, 89	0
All	All	421/438 (96%)	-0.17	15 (3%) 46 48	20, 33, 72, 113	0

All (15) RSRZ outliers are listed below:

Mol	Chain	Res	Type	RSRZ
1	A	365	THR	4.0
1	A	273	ARG	3.9
1	A	190	SER	3.7
1	A	366	ASN	3.6
1	A	185	ASP	3.6
1	A	191	GLY	3.5
1	A	272	SER	3.0
1	A	367	GLN	2.9
1	A	276	SER	2.9
1	A	499	ASP	2.8
1	A	326	THR	2.5
2	B	1	GLY	2.4
1	A	462	PHE	2.3
1	A	363	GLN	2.2
2	B	0	MET	2.0

6.2 Non-standard residues in protein, DNA, RNA chains [i](#)

There are no non-standard protein/DNA/RNA residues in this entry.

6.3 Carbohydrates [i](#)

There are no carbohydrates in this entry.

6.4 Ligands ⓘ

In the following table, the Atoms column lists the number of modelled atoms in the group and the number defined in the chemical component dictionary. LLDF column lists the quality of electron density of the group with respect to its neighbouring residues in protein, DNA or RNA chains. The B-factors column lists the minimum, median, 95th percentile and maximum values of B factors of atoms in the group. The column labelled 'Q< 0.9' lists the number of atoms with occupancy less than 0.9.

Mol	Type	Chain	Res	Atoms	RSCC	RSR	LLDF	B-factors(Å ²)	Q<0.9
3	FLC	A	1505	13/13	0.74	0.23	10.71	57,80,98,98	0
3	FLC	A	1500	13/13	0.89	0.20	10.63	36,46,57,67	0
3	FLC	B	1108	13/13	0.89	0.34	8.66	51,67,81,96	0
5	EDO	A	1512	4/4	0.89	0.37	8.29	47,56,59,74	0
5	EDO	B	1111	4/4	0.94	0.26	6.91	42,52,54,71	0
5	EDO	B	1112	4/4	0.85	0.21	6.38	47,57,59,66	0
3	FLC	A	1506	13/13	0.83	0.20	5.58	47,81,97,97	0
5	EDO	A	1516	4/4	0.93	0.20	4.25	45,46,50,60	0
5	EDO	A	1511	4/4	0.82	0.26	3.65	63,66,69,70	0
5	EDO	A	1509	4/4	0.91	0.18	3.62	43,48,62,65	0
5	EDO	B	1110	4/4	0.83	0.19	2.87	36,51,69,77	0
5	EDO	A	1515	4/4	0.93	0.15	1.96	56,57,61,65	0
5	EDO	A	1508	4/4	0.95	0.13	1.44	36,42,45,45	0
3	FLC	A	1504	13/13	0.84	0.19	0.79	34,89,105,106	0
3	FLC	A	1502	13/13	0.88	0.16	0.76	28,53,82,102	0
3	FLC	A	1501	13/13	0.96	0.17	0.68	36,45,60,60	0
4	TAK	A	1507	23/30	0.98	0.12	-0.39	21,28,47,71	0
3	FLC	A	1503	13/13	0.96	0.08	-1.94	18,30,43,52	0
5	EDO	A	1514	4/4	0.76	0.18	-	64,80,83,84	0
5	EDO	B	1109	4/4	0.73	0.43	-	65,74,82,94	0
5	EDO	A	1510	4/4	0.80	0.19	-	51,85,86,88	0
5	EDO	A	1513	4/4	0.94	0.22	-	49,59,67,77	0

6.5 Other polymers ⓘ

There are no such residues in this entry.