



Full wwPDB X-ray Structure Validation Report ⓘ

Jan 31, 2016 – 06:41 PM GMT

PDB ID : 1C12
Title : INSIGHT IN ODORANT PERCEPTION: THE CRYSTAL STRUCTURE AND BINDING CHARACTERISTICS OF ANTIBODY FRAGMENTS DIRECTED AGAINST THE MUSK ODORANT TRASEOLIDE
Authors : Langedijk, A.C.; Spinelli, S.; Anguille, C.; Hermans, P.; Nederlof, J.; Bute-nandt, J.; Honegger, A.; Cambillau, C.; Pluckthun, A.
Deposited on : 1999-07-20
Resolution : 2.60 Å(reported)

This is a Full wwPDB X-ray Structure Validation Report for a publicly released PDB entry.
We welcome your comments at validation@mail.wwpdb.org
A user guide is available at
<http://wwpdb.org/validation/2016/XrayValidationReportHelp>
with specific help available everywhere you see the ⓘ symbol.

The following versions of software and data (see [references ⓘ](#)) were used in the production of this report:

MolProbity : 4.02b-467
Mogul : 1.7 (RC4), CSD as536be (2015)
Xtriage (Phenix) : **NOT EXECUTED**
EDS : **NOT EXECUTED**
Percentile statistics : 20151230.v01 (using entries in the PDB archive December 30th 2015)
Ideal geometry (proteins) : Engh & Huber (2001)
Ideal geometry (DNA, RNA) : Parkinson et al. (1996)
Validation Pipeline (wwPDB-VP) : trunk26865

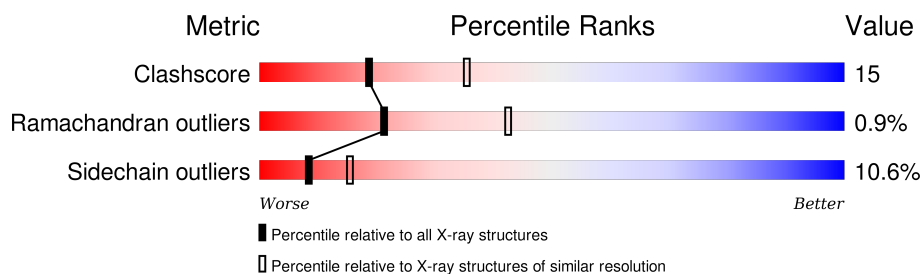
1 Overall quality at a glance

The following experimental techniques were used to determine the structure:

X-RAY DIFFRACTION

The reported resolution of this entry is 2.60 Å.

Percentile scores (ranging between 0-100) for global validation metrics of the entry are shown in the following graphic. The table shows the number of entries on which the scores are based.



Metric	Whole archive (#Entries)	Similar resolution (#Entries, resolution range(Å))
Clashscore	102246	2679 (2.60-2.60)
Ramachandran outliers	100387	2635 (2.60-2.60)
Sidechain outliers	100360	2635 (2.60-2.60)

The table below summarises the geometric issues observed across the polymeric chains and their fit to the electron density. The red, orange, yellow and green segments on the lower bar indicate the fraction of residues that contain outliers for ≥ 3 , 2, 1 and 0 types of geometric quality criteria. A grey segment represents the fraction of residues that are not modelled. The numeric value for each fraction is indicated below the corresponding segment, with a dot representing fractions $\leq 5\%$. The upper red bar (where present) indicates the fraction of residues that have poor fit to the electron density. The numeric value is given above the bar.

Note EDS was not executed.

Mol	Chain	Length	Quality of chain
1	A	214	
2	B	220	

The following table lists non-polymeric compounds, carbohydrate monomers and non-standard residues in protein, DNA, RNA chains that are outliers for geometric or electron-density-fit criteria:

Mol	Type	Chain	Res	Chirality	Geometry	Clashes	Electron density
3	TRZ	A	215	-	-	X	-

2 Entry composition [i](#)

There are 4 unique types of molecules in this entry. The entry contains 3459 atoms, of which 0 are hydrogens and 0 are deuteriums.

In the tables below, the ZeroOcc column contains the number of atoms modelled with zero occupancy, the AltConf column contains the number of residues with at least one atom in alternate conformation and the Trace column contains the number of residues modelled with at most 2 atoms.

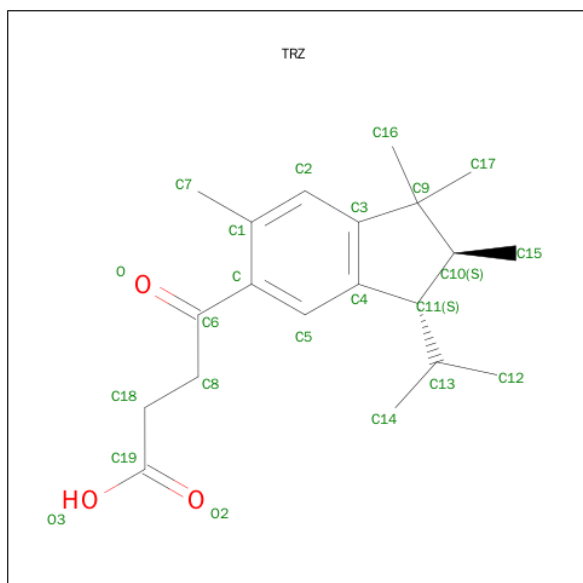
- Molecule 1 is a protein called PROTEIN (ANTIBODY FRAGMENT FAB).

Mol	Chain	Residues	Atoms					ZeroOcc	AltConf	Trace
1	A	214	Total	C	N	O	S	11	0	0
			1644	1024	271	343	6			

- Molecule 2 is a protein called PROTEIN (ANTIBODY FRAGMENT FAB).

Mol	Chain	Residues	Atoms					ZeroOcc	AltConf	Trace
2	B	220	Total	C	N	O	S	19	0	0
			1678	1063	277	332	6			

- Molecule 3 is TRAZEOLIDE (three-letter code: TRZ) (formula: C₂₀H₂₈O₃).



Mol	Chain	Residues	Atoms			ZeroOcc	AltConf
3	A	1	Total	C	O	0	0
			23	20	3		

- Molecule 4 is water.

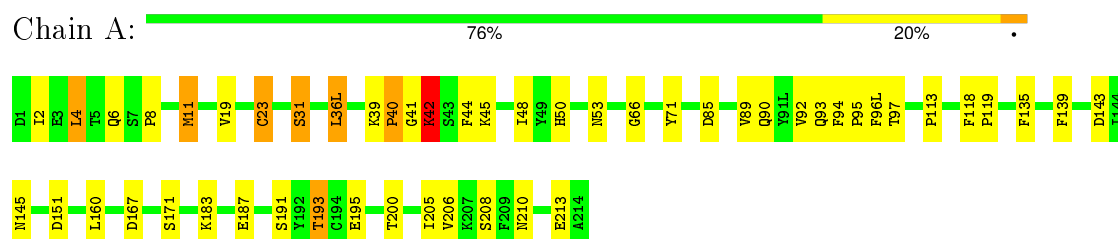
Mol	Chain	Residues	Atoms		ZeroOcc	AltConf
4	A	48	Total 48	O 48	0	0
4	B	66	Total 66	O 66	0	0

3 Residue-property plots

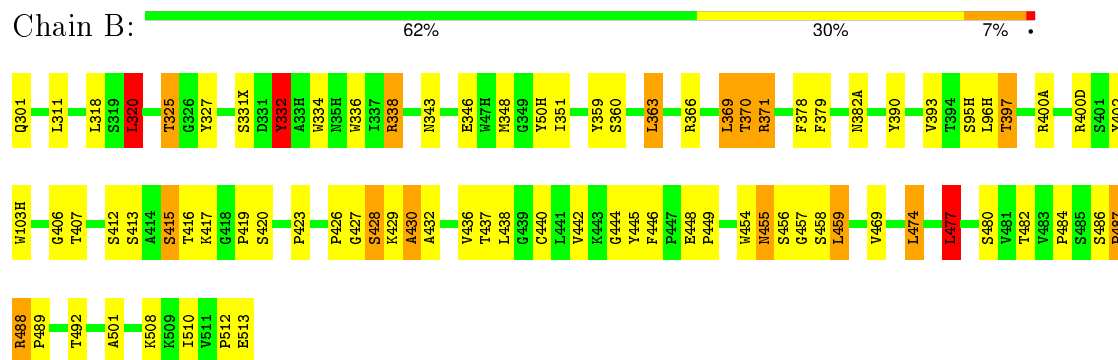
These plots are drawn for all protein, RNA and DNA chains in the entry. The first graphic for a chain summarises the proportions of errors displayed in the second graphic. The second graphic shows the sequence view annotated by issues in geometry and electron density. Residues are color-coded according to the number of geometric quality criteria for which they contain at least one outlier: green = 0, yellow = 1, orange = 2 and red = 3 or more. A red dot above a residue indicates a poor fit to the electron density ($RSRZ > 2$). Stretches of 2 or more consecutive residues without any outlier are shown as a green connector. Residues present in the sample, but not in the model, are shown in grey.

Note EDS was not executed.

• Molecule 1: PROTEIN (ANTIBODY FRAGMENT FAB)



• Molecule 2: PROTEIN (ANTIBODY FRAGMENT FAB)



4 Data and refinement statistics

Xtriage (Phenix) and EDS were not executed - this section will therefore be incomplete.

Property	Value	Source
Space group	P 2 21 21	Depositor
Cell constants a, b, c, α , β , γ	40.40Å 84.10Å 134.30Å 90.00° 90.00° 90.00°	Depositor
Resolution (Å)	12.00 – 2.60	Depositor
% Data completeness (in resolution range)	(Not available) (12.00-2.60)	Depositor
R_{merge}	0.13	Depositor
R_{sym}	(Not available)	Depositor
Refinement program	X-PLOR	Depositor
R, R_{free}	0.205 , 0.270	Depositor
Estimated twinning fraction	No twinning to report.	Xtriage
Total number of atoms	3459	wwPDB-VP
Average B, all atoms (Å ²)	33.0	wwPDB-VP

5 Model quality

5.1 Standard geometry

Bond lengths and bond angles in the following residue types are not validated in this section: TRZ

The Z score for a bond length (or angle) is the number of standard deviations the observed value is removed from the expected value. A bond length (or angle) with $|Z| > 5$ is considered an outlier worth inspection. RMSZ is the root-mean-square of all Z scores of the bond lengths (or angles).

Mol	Chain	Bond lengths		Bond angles	
		RMSZ	$\# Z > 5$	RMSZ	$\# Z > 5$
1	A	0.47	0/1681	0.76	6/2280 (0.3%)
2	B	4.20	15/1720 (0.9%)	1.60	13/2349 (0.6%)
All	All	3.00	15/3401 (0.4%)	1.26	19/4629 (0.4%)

All (15) bond length outliers are listed below:

Mol	Chain	Res	Type	Atoms	Z	Observed(Å)	Ideal(Å)
2	B	455	ASN	C-O	130.93	3.72	1.23
2	B	455	ASN	CB-CG	106.97	3.97	1.51
2	B	430	ALA	C-O	-21.91	0.81	1.23
2	B	456	SER	CA-CB	-15.87	1.29	1.52
2	B	455	ASN	CA-C	10.23	1.79	1.52
2	B	430	ALA	CA-C	9.27	1.77	1.52
2	B	458	SER	N-CA	8.86	1.64	1.46
2	B	458	SER	CA-CB	6.95	1.63	1.52
2	B	455	ASN	CA-CB	6.94	1.71	1.53
2	B	458	SER	CA-C	-6.32	1.36	1.52
2	B	457	GLY	N-CA	-6.08	1.36	1.46
2	B	457	GLY	CA-C	-5.59	1.43	1.51
2	B	456	SER	C-O	5.54	1.33	1.23
2	B	430	ALA	N-CA	5.29	1.56	1.46
2	B	455	ASN	CG-OD1	5.29	1.35	1.24

All (19) bond angle outliers are listed below:

Mol	Chain	Res	Type	Atoms	Z	Observed(°)	Ideal(°)
2	B	455	ASN	CA-C-O	-45.39	24.78	120.10
2	B	455	ASN	CA-CB-CG	-32.90	41.02	113.40
2	B	456	SER	N-CA-CB	21.02	142.04	110.50
2	B	430	ALA	CA-C-O	10.78	142.73	120.10

Continued on next page...

Continued from previous page...

Mol	Chain	Res	Type	Atoms	Z	Observed(°)	Ideal(°)
2	B	456	SER	N-CA-C	-10.58	82.43	111.00
2	B	455	ASN	CB-CA-C	10.23	130.87	110.40
2	B	457	GLY	O-C-N	10.22	139.06	122.70
2	B	455	ASN	N-CA-CB	9.57	127.83	110.60
2	B	455	ASN	N-CA-C	-9.36	85.74	111.00
1	A	42	LYS	N-CA-C	9.17	135.76	111.00
2	B	457	GLY	CA-C-N	-8.56	98.38	117.20
2	B	458	SER	N-CA-CB	-7.66	99.02	110.50
1	A	40	PRO	C-N-CA	-7.24	107.10	122.30
1	A	40	PRO	CA-C-N	-6.95	102.31	116.20
1	A	40	PRO	CA-C-O	6.36	135.46	120.20
1	A	41	GLY	C-N-CA	6.06	136.84	121.70
1	A	42	LYS	N-CA-CB	-5.48	100.73	110.60
2	B	477	LEU	CA-CB-CG	5.10	127.03	115.30
2	B	320	LEU	CA-CB-CG	5.00	126.80	115.30

There are no chirality outliers.

There are no planarity outliers.

5.2 Too-close contacts ⓘ

In the following table, the Non-H and H(model) columns list the number of non-hydrogen atoms and hydrogen atoms in the chain respectively. The H(added) column lists the number of hydrogen atoms added and optimized by MolProbity. The Clashes column lists the number of clashes within the asymmetric unit, whereas Symm-Clashes lists symmetry related clashes.

Mol	Chain	Non-H	H(model)	H(added)	Clashes	Symm-Clashes
1	A	1644	0	1556	31	0
2	B	1678	0	1655	66	0
3	A	23	0	27	13	0
4	A	48	0	0	3	0
4	B	66	0	0	2	0
All	All	3459	0	3238	100	0

The all-atom clashscore is defined as the number of clashes found per 1000 atoms (including hydrogen atoms). The all-atom clashscore for this structure is 15.

All (100) close contacts within the same asymmetric unit are listed below, sorted by their clash magnitude.

Atom-1	Atom-2	Interatomic distance (Å)	Clash overlap (Å)
2:B:430:ALA:C	2:B:430:ALA:CA	1.77	1.53
2:B:455:ASN:C	2:B:455:ASN:CA	1.79	1.50
2:B:455:ASN:CG	2:B:455:ASN:C	1.77	1.40
2:B:430:ALA:HA	2:B:432:ALA:HA	1.31	1.12
1:A:6:GLN:HG2	1:A:23:CYS:SG	1.89	1.11
2:B:430:ALA:C	2:B:430:ALA:O	0.81	1.01
3:A:215:TRZ:H181	2:B:96(H):LEU:HD23	1.45	0.98
2:B:455:ASN:N	2:B:455:ASN:C	2.22	0.92
1:A:90:GLN:NE2	1:A:93:GLN:H	1.78	0.81
2:B:427:GLY:O	2:B:428:SER:HB2	1.81	0.79
2:B:415:SER:HB3	2:B:417:LYS:HE3	1.65	0.78
2:B:336:TRP:CD1	2:B:369:LEU:HD21	2.22	0.74
2:B:359:TYR:HE1	2:B:369:LEU:HB2	1.53	0.74
1:A:39:LYS:HB3	1:A:40:PRO:HD2	1.69	0.73
2:B:370:THR:HG22	2:B:379:PHE:HD1	1.53	0.73
1:A:8:PRO:HG3	1:A:11:MET:HE3	1.71	0.71
2:B:430:ALA:CA	2:B:432:ALA:HA	2.17	0.70
2:B:336:TRP:HD1	2:B:369:LEU:HD21	1.58	0.68
2:B:318:LEU:HD21	2:B:320:LEU:HD22	1.75	0.68
2:B:455:ASN:C	2:B:455:ASN:OD1	2.31	0.68
2:B:430:ALA:C	2:B:432:ALA:HB1	2.14	0.68
1:A:205:ILE:HD12	1:A:205:ILE:H	1.58	0.68
1:A:90:GLN:HE21	1:A:93:GLN:H	1.43	0.66
1:A:193:THR:HB	1:A:208:SER:HB3	1.77	0.65
2:B:351:ILE:HD11	2:B:371:ARG:HD2	1.77	0.65
2:B:484:PRO:O	2:B:487:PRO:HD2	1.97	0.65
3:A:215:TRZ:C18	2:B:96(H):LEU:HD23	2.24	0.62
3:A:215:TRZ:C12	2:B:96(H):LEU:HD21	2.29	0.62
2:B:370:THR:HG22	2:B:379:PHE:CD1	2.34	0.62
2:B:397:THR:HG21	2:B:402:TYR:HE1	1.63	0.62
1:A:210:ASN:HB3	1:A:213:GLU:HG3	1.81	0.62
2:B:486:SER:HB2	2:B:487:PRO:HD3	1.81	0.61
1:A:195:GLU:HG3	1:A:206:VAL:HG22	1.80	0.61
2:B:430:ALA:CB	2:B:430:ALA:C	2.63	0.60
3:A:215:TRZ:H122	2:B:96(H):LEU:CD2	2.31	0.60
3:A:215:TRZ:H5	3:A:215:TRZ:H122	1.85	0.59
3:A:215:TRZ:C14	4:A:262:HOH:O	2.50	0.58
1:A:36(L):LEU:HD12	1:A:36(L):LEU:N	2.18	0.58
2:B:437:THR:OG1	2:B:482:THR:HG22	2.05	0.57
2:B:455:ASN:ND2	2:B:459:LEU:HD12	2.22	0.55
1:A:96(L):PHE:HE1	3:A:215:TRZ:H73	1.72	0.55
2:B:455:ASN:OD1	2:B:492:THR:O	2.25	0.53

Continued on next page...

Continued from previous page...

Atom-1	Atom-2	Interatomic distance (Å)	Clash overlap (Å)
1:A:2:ILE:HG22	1:A:4:LEU:CD2	2.39	0.53
1:A:135:PHE:CE1	2:B:480:SER:HB3	2.44	0.53
2:B:430:ALA:C	2:B:432:ALA:CB	2.77	0.52
1:A:160:LEU:HG	2:B:469:VAL:HG21	1.92	0.52
3:A:215:TRZ:C12	2:B:96(H):LEU:CD2	2.88	0.52
3:A:215:TRZ:H71	3:A:215:TRZ:O	2.10	0.52
2:B:332:TYR:HB3	2:B:95(H):SER:OG	2.10	0.52
3:A:215:TRZ:H142	4:A:262:HOH:O	2.09	0.52
1:A:113:PRO:HB3	1:A:139:PHE:HB3	1.92	0.51
3:A:215:TRZ:H122	2:B:96(H):LEU:HD21	1.92	0.51
2:B:318:LEU:HD21	2:B:320:LEU:CD2	2.39	0.51
1:A:94:PHE:HE1	1:A:96(L):PHE:CZ	2.29	0.50
2:B:343:ASN:HD22	2:B:343:ASN:N	2.09	0.50
2:B:426:PRO:HD3	2:B:438:LEU:HD23	1.93	0.50
3:A:215:TRZ:C5	3:A:215:TRZ:H122	2.40	0.49
2:B:417:LYS:O	2:B:445:TYR:HA	2.12	0.49
2:B:415:SER:CB	2:B:417:LYS:HE3	2.40	0.49
2:B:338:ARG:HG2	2:B:348:MET:SD	2.52	0.49
1:A:167:ASP:O	1:A:171:SER:HA	2.12	0.49
1:A:66:GLY:HA3	1:A:71:TYR:HA	1.95	0.49
2:B:488:ARG:HG2	2:B:489:PRO:HA	1.94	0.49
1:A:205:ILE:HD12	1:A:205:ILE:N	2.28	0.48
2:B:390:TYR:O	2:B:406:GLY:HA2	2.14	0.48
1:A:50:HIS:HB3	1:A:53:ASN:HD22	1.79	0.48
2:B:397:THR:HG21	2:B:402:TYR:CE1	2.46	0.47
2:B:366:ARG:HD2	2:B:382(A):ASN:O	2.14	0.47
2:B:318:LEU:CD2	2:B:320:LEU:HD22	2.44	0.47
1:A:39:LYS:HB3	1:A:40:PRO:CD	2.42	0.47
2:B:423:PRO:HD3	2:B:508:LYS:HG2	1.95	0.47
2:B:360:SER:HB3	2:B:363:LEU:HD22	1.97	0.47
1:A:183:LYS:O	1:A:187:GLU:HG2	2.16	0.46
1:A:90:GLN:HG2	1:A:92:VAL:HG12	1.97	0.46
2:B:484:PRO:C	2:B:487:PRO:HD2	2.36	0.45
2:B:438:LEU:HB3	2:B:510:ILE:HG21	1.99	0.45
2:B:488:ARG:NH1	2:B:512:PRO:HG3	2.31	0.45
1:A:95:PRO:O	1:A:97:THR:HG23	2.17	0.44
2:B:338:ARG:HD2	2:B:346:GLU:OE2	2.18	0.43
2:B:426:PRO:O	2:B:513:GLU:HG3	2.19	0.43
2:B:412:SER:HB3	2:B:446:PHE:CZ	2.54	0.43
2:B:482:THR:HG23	4:B:527:HOH:O	2.17	0.43
1:A:151:ASP:HA	1:A:191:SER:HB3	2.00	0.43

Continued on next page...

Continued from previous page...

Atom-1	Atom-2	Interatomic distance (Å)	Clash overlap (Å)
2:B:444:GLY:HA2	2:B:474:LEU:HB3	2.01	0.43
1:A:11:MET:SD	1:A:19:VAL:HG13	2.59	0.43
2:B:325:THR:HG23	4:B:525:HOH:O	2.19	0.42
1:A:48:ILE:C	1:A:48:ILE:HD12	2.39	0.42
2:B:327:TYR:CE1	2:B:331(X):SER:HB2	2.53	0.42
2:B:419:PRO:HB2	2:B:442:VAL:HG13	2.00	0.42
2:B:477:LEU:C	2:B:477:LEU:HD12	2.40	0.42
1:A:36(L):LEU:HD11	1:A:89:VAL:HG12	2.02	0.42
1:A:118:PHE:HA	1:A:119:PRO:HD3	1.77	0.42
1:A:31:SER:HA	1:A:71:TYR:CE2	2.55	0.42
2:B:440:CYS:HB2	2:B:454:TRP:CH2	2.55	0.41
2:B:427:GLY:O	2:B:428:SER:CB	2.52	0.41
2:B:484:PRO:HB2	2:B:487:PRO:HD2	2.03	0.41
2:B:334:TRP:HB3	2:B:378:PHE:CZ	2.55	0.40
1:A:44:PHE:HB2	2:B:103(H):TRP:CE3	2.55	0.40
3:A:215:TRZ:H141	4:A:262:HOH:O	2.15	0.40
2:B:484:PRO:HB2	2:B:487:PRO:CD	2.52	0.40

There are no symmetry-related clashes.

5.3 Torsion angles ⓘ

5.3.1 Protein backbone ⓘ

In the following table, the Percentiles column shows the percent Ramachandran outliers of the chain as a percentile score with respect to all X-ray entries followed by that with respect to entries of similar resolution.

The Analysed column shows the number of residues for which the backbone conformation was analysed, and the total number of residues.

Mol	Chain	Analysed	Favoured	Allowed	Outliers	Percentiles	
1	A	212/214 (99%)	198 (93%)	13 (6%)	1 (0%)	34	60
2	B	214/220 (97%)	198 (92%)	13 (6%)	3 (1%)	14	28
All	All	426/434 (98%)	396 (93%)	26 (6%)	4 (1%)	21	42

All (4) Ramachandran outliers are listed below:

Mol	Chain	Res	Type
1	A	42	LYS

Continued on next page...

Continued from previous page...

Mol	Chain	Res	Type
2	B	332	TYR
2	B	428	SER
2	B	501	ALA

5.3.2 Protein sidechains ⓘ

In the following table, the Percentiles column shows the percent sidechain outliers of the chain as a percentile score with respect to all X-ray entries followed by that with respect to entries of similar resolution.

The Analysed column shows the number of residues for which the sidechain conformation was analysed, and the total number of residues.

Mol	Chain	Analysed	Rotameric	Outliers	Percentiles	
1	A	189/189 (100%)	177 (94%)	12 (6%)	22	44
2	B	196/196 (100%)	167 (85%)	29 (15%)	4	6
All	All	385/385 (100%)	344 (89%)	41 (11%)	8	15

All (41) residues with a non-rotameric sidechain are listed below:

Mol	Chain	Res	Type
1	A	4	LEU
1	A	11	MET
1	A	23	CYS
1	A	31	SER
1	A	36(L)	LEU
1	A	42	LYS
1	A	45	LYS
1	A	85	ASP
1	A	143	ASP
1	A	145	ASN
1	A	193	THR
1	A	200	THR
2	B	301	GLN
2	B	311	LEU
2	B	320	LEU
2	B	325	THR
2	B	332	TYR
2	B	338	ARG
2	B	50(H)	TYR
2	B	363	LEU

Continued on next page...

Continued from previous page...

Mol	Chain	Res	Type
2	B	369	LEU
2	B	370	THR
2	B	371	ARG
2	B	393	VAL
2	B	397	THR
2	B	400(A)	ARG
2	B	400(D)	ARG
2	B	407	THR
2	B	413	SER
2	B	415	SER
2	B	416	THR
2	B	420	SER
2	B	429	LYS
2	B	436	VAL
2	B	448	GLU
2	B	449	PRO
2	B	459	LEU
2	B	474	LEU
2	B	477	LEU
2	B	487	PRO
2	B	488	ARG

Some sidechains can be flipped to improve hydrogen bonding and reduce clashes. All (9) such sidechains are listed below:

Mol	Chain	Res	Type
1	A	37	GLN
1	A	53	ASN
1	A	90	GLN
1	A	124	GLN
1	A	161	ASN
1	A	166	GLN
2	B	301	GLN
2	B	343	ASN
2	B	455	ASN

5.3.3 RNA ⓘ

There are no RNA molecules in this entry.

5.4 Non-standard residues in protein, DNA, RNA chains ⓘ

There are no non-standard protein/DNA/RNA residues in this entry.

5.5 Carbohydrates ⓘ

There are no carbohydrates in this entry.

5.6 Ligand geometry ⓘ

1 ligand is modelled in this entry.

In the following table, the Counts columns list the number of bonds (or angles) for which Mogul statistics could be retrieved, the number of bonds (or angles) that are observed in the model and the number of bonds (or angles) that are defined in the chemical component dictionary. The Link column lists molecule types, if any, to which the group is linked. The Z score for a bond length (or angle) is the number of standard deviations the observed value is removed from the expected value. A bond length (or angle) with $|Z| > 2$ is considered an outlier worth inspection. RMSZ is the root-mean-square of all Z scores of the bond lengths (or angles).

Mol	Type	Chain	Res	Link	Bond lengths			Bond angles		
					Counts	RMSZ	$\# Z > 2$	Counts	RMSZ	$\# Z > 2$
3	TRZ	A	215	-	21,24,24	2.41	9 (42%)	26,37,37	1.64	6 (23%)

In the following table, the Chirals column lists the number of chiral outliers, the number of chiral centers analysed, the number of these observed in the model and the number defined in the chemical component dictionary. Similar counts are reported in the Torsion and Rings columns. '-' means no outliers of that kind were identified.

Mol	Type	Chain	Res	Link	Chirals	Torsions	Rings
3	TRZ	A	215	-	-	0/11/33/33	0/2/2/2

All (9) bond length outliers are listed below:

Mol	Chain	Res	Type	Atoms	Z	Observed(Å)	Ideal(Å)
3	A	215	TRZ	C9-C10	-5.04	1.42	1.55
3	A	215	TRZ	C4-C3	-3.75	1.34	1.39
3	A	215	TRZ	C-C6	-3.73	1.41	1.48
3	A	215	TRZ	C17-C9	-3.71	1.47	1.54
3	A	215	TRZ	C15-C10	-3.48	1.44	1.53
3	A	215	TRZ	C9-C3	-3.15	1.46	1.51
3	A	215	TRZ	C11-C13	-2.06	1.50	1.54
3	A	215	TRZ	O-C6	2.46	1.26	1.22

Continued on next page...

Continued from previous page...

Mol	Chain	Res	Type	Atoms	Z	Observed(Å)	Ideal(Å)
3	A	215	TRZ	C4-C11	3.27	1.56	1.51

All (6) bond angle outliers are listed below:

Mol	Chain	Res	Type	Atoms	Z	Observed(°)	Ideal(°)
3	A	215	TRZ	C17-C9-C16	-4.90	97.57	109.54
3	A	215	TRZ	C1-C2-C3	-2.63	119.44	123.54
3	A	215	TRZ	C2-C3-C9	-2.35	124.67	128.03
3	A	215	TRZ	C14-C13-C12	-2.32	103.86	110.67
3	A	215	TRZ	C17-C9-C3	2.44	117.11	111.13
3	A	215	TRZ	C16-C9-C3	2.59	117.48	111.13

There are no chirality outliers.

There are no torsion outliers.

There are no ring outliers.

1 monomer is involved in 13 short contacts:

Mol	Chain	Res	Type	Clashes	Symm-Clashes
3	A	215	TRZ	13	0

5.7 Other polymers [i](#)

There are no such residues in this entry.

5.8 Polymer linkage issues [i](#)

There are no chain breaks in this entry.

6 Fit of model and data ⓘ

6.1 Protein, DNA and RNA chains ⓘ

EDS was not executed - this section will therefore be empty.

6.2 Non-standard residues in protein, DNA, RNA chains ⓘ

EDS was not executed - this section will therefore be empty.

6.3 Carbohydrates ⓘ

EDS was not executed - this section will therefore be empty.

6.4 Ligands ⓘ

EDS was not executed - this section will therefore be empty.

6.5 Other polymers ⓘ

EDS was not executed - this section will therefore be empty.