



wwPDB X-ray Structure Validation Summary Report ⓘ

Feb 1, 2016 – 03:20 PM GMT

PDB ID : 4C2Y
Title : Human N-myristoyltransferase (NMT1) with Myristoyl-CoA co-factor
Authors : Thinon, E.; Serwa, R.A.; Brannigan, J.A.; Brassat, U.; Wright, M.H.; Heal, W.P.; Wilkinson, A.J.; Mann, D.J.; Tate, E.W.
Deposited on : 2013-08-20
Resolution : 1.64 Å(reported)

This is a wwPDB X-ray Structure Validation Summary Report for a publicly released PDB entry.
We welcome your comments at validation@mail.wwpdb.org
A user guide is available at
<http://wwpdb.org/validation/2016/XrayValidationReportHelp>
with specific help available everywhere you see the ⓘ symbol.

The following versions of software and data (see [references ⓘ](#)) were used in the production of this report:

MolProbity : 4.02b-467
Mogul : 1.7 (RC4), CSD as536be (2015)
Xtriage (Phenix) : 1.9-1692
EDS : rb-20026688
Percentile statistics : 20151230.v01 (using entries in the PDB archive December 30th 2015)
Refmac : 5.8.0135
CCP4 : 6.5.0
Ideal geometry (proteins) : Engh & Huber (2001)
Ideal geometry (DNA, RNA) : Parkinson et al. (1996)
Validation Pipeline (wwPDB-VP) : trunk26865

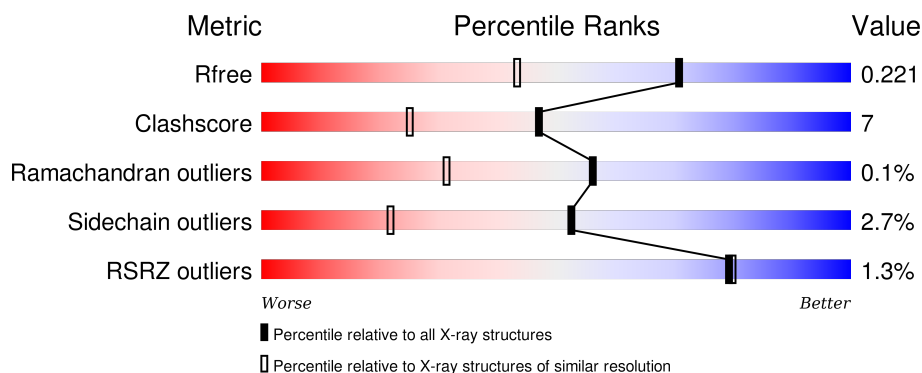
1 Overall quality at a glance

The following experimental techniques were used to determine the structure:

X-RAY DIFFRACTION

The reported resolution of this entry is 1.64 Å.

Percentile scores (ranging between 0-100) for global validation metrics of the entry are shown in the following graphic. The table shows the number of entries on which the scores are based.



Metric	Whole archive (#Entries)	Similar resolution (#Entries, resolution range(Å))
R_{free}	91344	1953 (1.66-1.62)
Clashscore	102246	2091 (1.66-1.62)
Ramachandran outliers	100387	2052 (1.66-1.62)
Sidechain outliers	100360	2052 (1.66-1.62)
RSRZ outliers	91569	1955 (1.66-1.62)

The table below summarises the geometric issues observed across the polymeric chains and their fit to the electron density. The red, orange, yellow and green segments on the lower bar indicate the fraction of residues that contain outliers for ≥ 3 , 2, 1 and 0 types of geometric quality criteria. A grey segment represents the fraction of residues that are not modelled. The numeric value for each fraction is indicated below the corresponding segment, with a dot representing fractions $\leq 5\%$. The upper red bar (where present) indicates the fraction of residues that have poor fit to the electron density. The numeric value is given above the bar.

Mol	Chain	Length	Quality of chain
1	A	410	
1	B	410	

The following table lists non-polymeric compounds, carbohydrate monomers and non-standard residues in protein, DNA, RNA chains that are outliers for geometric or electron-density-fit criteria:

Mol	Type	Chain	Res	Chirality	Geometry	Clashes	Electron density
4	CIT	A	1499	-	-	-	X
4	CIT	B	1499	-	-	-	X
5	GOL	A	1500	-	-	-	X
5	GOL	A	1501	-	-	-	X
5	GOL	A	1502	-	-	-	X
5	GOL	B	1500	-	-	X	-
5	GOL	B	1501	-	-	-	X
5	GOL	B	1502	-	-	-	X
5	GOL	B	1503	-	-	X	X

2 Entry composition

There are 6 unique types of molecules in this entry. The entry contains 7569 atoms, of which 0 are hydrogens and 0 are deuteriums.

In the tables below, the ZeroOcc column contains the number of atoms modelled with zero occupancy, the AltConf column contains the number of residues with at least one atom in alternate conformation and the Trace column contains the number of residues modelled with at most 2 atoms.

- Molecule 1 is a protein called GLYCYLPEPTIDE N-TETRADECANOYLTRANSFERASE 1.

Mol	Chain	Residues	Atoms					ZeroOcc	AltConf	Trace
1	A	382	Total	C	N	O	S	0	27	0
			3286	2137	553	579	17			
1	B	382	Total	C	N	O	S	0	25	0
			3285	2138	547	583	17			

There are 44 discrepancies between the modelled and reference sequences:

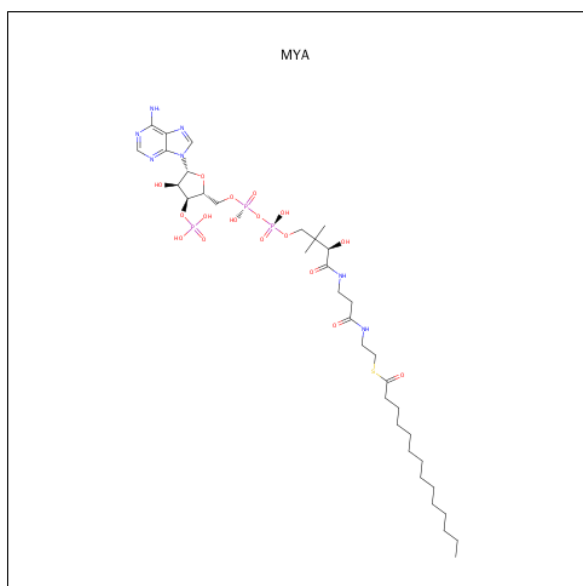
Chain	Residue	Modelled	Actual	Comment	Reference
A	87	MET	-	EXPRESSION TAG	UNP P30419
A	88	GLY	-	EXPRESSION TAG	UNP P30419
A	89	SER	-	EXPRESSION TAG	UNP P30419
A	90	SER	-	EXPRESSION TAG	UNP P30419
A	91	HIS	-	EXPRESSION TAG	UNP P30419
A	92	HIS	-	EXPRESSION TAG	UNP P30419
A	93	HIS	-	EXPRESSION TAG	UNP P30419
A	94	HIS	-	EXPRESSION TAG	UNP P30419
A	95	HIS	-	EXPRESSION TAG	UNP P30419
A	96	HIS	-	EXPRESSION TAG	UNP P30419
A	97	SER	-	EXPRESSION TAG	UNP P30419
A	98	SER	-	EXPRESSION TAG	UNP P30419
A	99	GLY	-	EXPRESSION TAG	UNP P30419
A	100	LEU	-	EXPRESSION TAG	UNP P30419
A	101	GLU	-	EXPRESSION TAG	UNP P30419
A	102	VAL	-	EXPRESSION TAG	UNP P30419
A	103	LEU	-	EXPRESSION TAG	UNP P30419
A	104	PHE	-	EXPRESSION TAG	UNP P30419
A	105	GLN	-	EXPRESSION TAG	UNP P30419
A	106	GLY	-	EXPRESSION TAG	UNP P30419
A	107	PRO	-	EXPRESSION TAG	UNP P30419
A	108	HIS	-	EXPRESSION TAG	UNP P30419
B	87	MET	-	EXPRESSION TAG	UNP P30419
B	88	GLY	-	EXPRESSION TAG	UNP P30419

Continued on next page...

Continued from previous page...

Chain	Residue	Modelled	Actual	Comment	Reference
B	89	SER	-	EXPRESSION TAG	UNP P30419
B	90	SER	-	EXPRESSION TAG	UNP P30419
B	91	HIS	-	EXPRESSION TAG	UNP P30419
B	92	HIS	-	EXPRESSION TAG	UNP P30419
B	93	HIS	-	EXPRESSION TAG	UNP P30419
B	94	HIS	-	EXPRESSION TAG	UNP P30419
B	95	HIS	-	EXPRESSION TAG	UNP P30419
B	96	HIS	-	EXPRESSION TAG	UNP P30419
B	97	SER	-	EXPRESSION TAG	UNP P30419
B	98	SER	-	EXPRESSION TAG	UNP P30419
B	99	GLY	-	EXPRESSION TAG	UNP P30419
B	100	LEU	-	EXPRESSION TAG	UNP P30419
B	101	GLU	-	EXPRESSION TAG	UNP P30419
B	102	VAL	-	EXPRESSION TAG	UNP P30419
B	103	LEU	-	EXPRESSION TAG	UNP P30419
B	104	PHE	-	EXPRESSION TAG	UNP P30419
B	105	GLN	-	EXPRESSION TAG	UNP P30419
B	106	GLY	-	EXPRESSION TAG	UNP P30419
B	107	PRO	-	EXPRESSION TAG	UNP P30419
B	108	HIS	-	EXPRESSION TAG	UNP P30419

- Molecule 2 is TETRADECANOYL-COA (three-letter code: MYA) (formula: $C_{35}H_{62}N_7O_{17}P_3S$).



Mol	Chain	Residues	Atoms						ZeroOcc	AltConf
2	A	1	Total	C	N	O	P	S	0	0
			63	35	7	17	3	1		

Continued on next page...

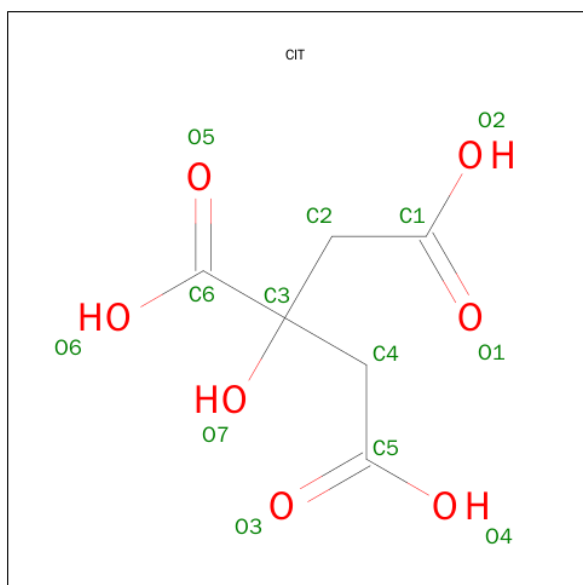
Continued from previous page...

Mol	Chain	Residues	Atoms						ZeroOcc	AltConf
2	B	1	Total	C	N	O	P	S	0	0
			63	35	7	17	3	1		

- Molecule 3 is MAGNESIUM ION (three-letter code: MG) (formula: Mg).

Mol	Chain	Residues	Atoms		ZeroOcc	AltConf
3	B	1	Total	Mg	0	0
			1	1		
3	A	1	Total	Mg	0	0
			1	1		

- Molecule 4 is CITRIC ACID (three-letter code: CIT) (formula: C₆H₈O₇).



Mol	Chain	Residues	Atoms			ZeroOcc	AltConf
4	A	1	Total	C	O	0	0
			13	6	7		
4	B	1	Total	C	O	0	0
			13	6	7		

- Molecule 5 is GLYCEROL (three-letter code: GOL) (formula: C₃H₈O₃).



Mol	Chain	Residues	Atoms			ZeroOcc	AltConf
5	A	1	Total	C	O	0	0
			6	3	3		
5	A	1	Total	C	O	0	0
			6	3	3		
5	A	1	Total	C	O	0	0
			6	3	3		
5	B	1	Total	C	O	0	0
			6	3	3		
5	B	1	Total	C	O	0	0
			6	3	3		
5	B	1	Total	C	O	0	0
			6	3	3		
5	B	1	Total	C	O	0	0
			6	3	3		

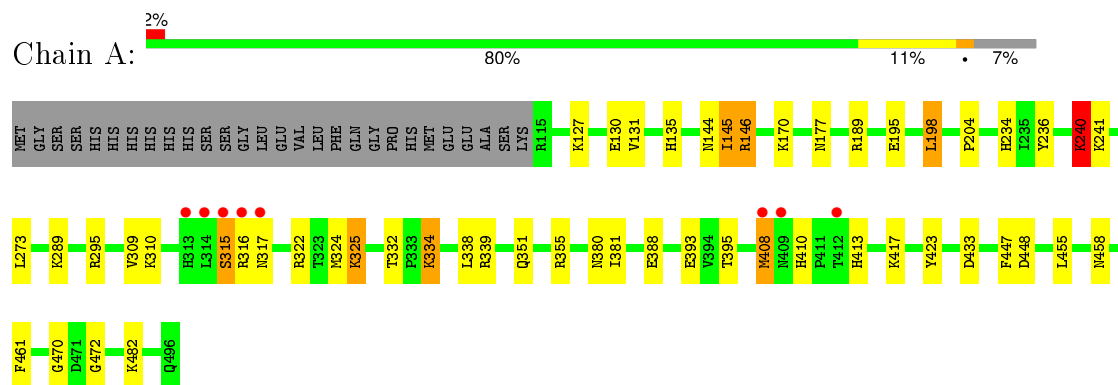
- Molecule 6 is water.

Mol	Chain	Residues	Atoms		ZeroOcc	AltConf
6	A	389	Total	O	0	0
			389	389		
6	B	413	Total	O	0	0
			413	413		

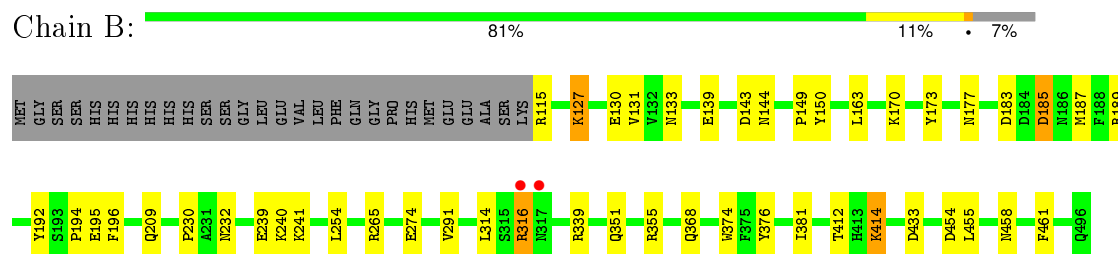
3 Residue-property plots [i](#)

These plots are drawn for all protein, RNA and DNA chains in the entry. The first graphic for a chain summarises the proportions of errors displayed in the second graphic. The second graphic shows the sequence view annotated by issues in geometry and electron density. Residues are color-coded according to the number of geometric quality criteria for which they contain at least one outlier: green = 0, yellow = 1, orange = 2 and red = 3 or more. A red dot above a residue indicates a poor fit to the electron density ($RSRZ > 2$). Stretches of 2 or more consecutive residues without any outlier are shown as a green connector. Residues present in the sample, but not in the model, are shown in grey.

• Molecule 1: GLYCYLPEPTIDE N-TETRADECANOYLTRANSFERASE 1



• Molecule 1: GLYCYLPEPTIDE N-TETRADECANOYLTRANSFERASE 1



4 Data and refinement statistics

Property	Value	Source
Space group	P 2 ₁ 2 ₁ 2	Depositor
Cell constants a, b, c, α , β , γ	78.74Å 178.48Å 58.55Å 90.00° 90.00° 90.00°	Depositor
Resolution (Å)	89.24 – 1.64 72.04 – 1.64	Depositor EDS
% Data completeness (in resolution range)	97.9 (89.24-1.64) 97.9 (72.04-1.64)	Depositor EDS
R_{merge}	0.07	Depositor
R_{sym}	(Not available)	Depositor
$\langle I/\sigma(I) \rangle$ ¹	2.38 (at 1.64Å)	Xtriage
Refinement program	REFMAC 5.8.0033	Depositor
R, R_{free}	0.170 , 0.222 0.169 , 0.221	Depositor DCC
R_{free} test set	4944 reflections (5.26%)	DCC
Wilson B-factor (Å ²)	17.2	Xtriage
Anisotropy	0.524	Xtriage
Bulk solvent k_{sol} (e/Å ³), B_{sol} (Å ²)	0.35 , 47.5	EDS
Estimated twinning fraction	No twinning to report.	Xtriage
L-test for twinning ²	$\langle L \rangle = 0.47$, $\langle L^2 \rangle = 0.30$	Xtriage
Outliers	0 of 98938 reflections	Xtriage
F_o, F_c correlation	0.96	EDS
Total number of atoms	7569	wwPDB-VP
Average B, all atoms (Å ²)	21.0	wwPDB-VP

Xtriage's analysis on translational NCS is as follows: *The largest off-origin peak in the Patterson function is 13.53% of the height of the origin peak. No significant pseudotranslation is detected.*

¹Intensities estimated from amplitudes.

²Theoretical values of $\langle |L| \rangle$, $\langle L^2 \rangle$ for acentric reflections are 0.5, 0.375 respectively for untwinned datasets, and 0.333, 0.2 for perfectly twinned datasets.

5 Model quality

5.1 Standard geometry

Bond lengths and bond angles in the following residue types are not validated in this section: MYA, GOL, MG, CIT

The Z score for a bond length (or angle) is the number of standard deviations the observed value is removed from the expected value. A bond length (or angle) with $|Z| > 5$ is considered an outlier worth inspection. RMSZ is the root-mean-square of all Z scores of the bond lengths (or angles).

Mol	Chain	Bond lengths		Bond angles	
		RMSZ	$\# Z > 5$	RMSZ	$\# Z > 5$
1	A	1.09	1/3454 (0.0%)	1.11	11/4684 (0.2%)
1	B	1.17	3/3446 (0.1%)	1.14	9/4679 (0.2%)
All	All	1.13	4/6900 (0.1%)	1.13	20/9363 (0.2%)

Chiral center outliers are detected by calculating the chiral volume of a chiral center and verifying if the center is modelled as a planar moiety or with the opposite hand. A planarity outlier is detected by checking planarity of atoms in a peptide group, atoms in a mainchain group or atoms of a sidechain that are expected to be planar.

Mol	Chain	#Chirality outliers	#Planarity outliers
1	A	0	1

All (4) bond length outliers are listed below:

Mol	Chain	Res	Type	Atoms	Z	Observed(Å)	Ideal(Å)
1	B	376	TYR	CE1-CZ	6.26	1.46	1.38
1	B	150	TYR	CG-CD1	5.29	1.46	1.39
1	A	423	TYR	CE1-CZ	5.15	1.45	1.38
1	B	374	TRP	CZ3-CH2	5.12	1.48	1.40

The worst 5 of 20 bond angle outliers are listed below:

Mol	Chain	Res	Type	Atoms	Z	Observed(°)	Ideal(°)
1	A	146	ARG	NE-CZ-NH1	9.66	125.13	120.30
1	B	254	LEU	CA-CB-CG	8.58	135.03	115.30
1	B	189	ARG	NE-CZ-NH1	8.23	124.41	120.30
1	B	339	ARG	NE-CZ-NH2	-8.09	116.26	120.30
1	B	189	ARG	NE-CZ-NH2	-7.67	116.47	120.30

There are no chirality outliers.

All (1) planarity outliers are listed below:

Mol	Chain	Res	Type	Group
1	A	315	SER	Peptide

5.2 Too-close contacts

In the following table, the Non-H and H(model) columns list the number of non-hydrogen atoms and hydrogen atoms in the chain respectively. The H(added) column lists the number of hydrogen atoms added and optimized by MolProbity. The Clashes column lists the number of clashes within the asymmetric unit, whereas Symm-Clashes lists symmetry related clashes.

Mol	Chain	Non-H	H(model)	H(added)	Clashes	Symm-Clashes
1	A	3286	0	3359	49	2
1	B	3285	0	3324	56	0
2	A	63	0	58	0	0
2	B	63	0	58	0	0
3	A	1	0	0	0	0
3	B	1	0	0	0	0
4	A	13	0	5	0	0
4	B	13	0	5	2	0
5	A	18	0	24	0	0
5	B	24	0	32	22	0
6	A	389	0	0	11	2
6	B	413	0	0	11	0
All	All	7569	0	6865	102	2

The all-atom clashscore is defined as the number of clashes found per 1000 atoms (including hydrogen atoms). The all-atom clashscore for this structure is 7.

The worst 5 of 102 close contacts within the same asymmetric unit are listed below, sorted by their clash magnitude.

Atom-1	Atom-2	Interatomic distance (Å)	Clash overlap (Å)
1:B:355[B]:ARG:HH11	1:B:355[B]:ARG:CG	1.48	1.25
1:A:240[A]:LYS:HE2	6:A:2200:HOH:O	1.31	1.25
1:B:291[A]:VAL:CG1	5:B:1500:GOL:H2	1.73	1.16
1:B:355[B]:ARG:HG2	1:B:355[B]:ARG:NH1	1.37	1.15
1:B:274:GLU:OE1	5:B:1503:GOL:H31	1.51	1.11

All (2) symmetry-related close contacts are listed below. The label for Atom-2 includes the symmetry operator and encoded unit-cell translations to be applied.

Atom-1	Atom-2	Interatomic distance (Å)	Clash overlap (Å)
1:A:393[B]:GLU:OE2	6:A:2022:HOH:O[1_554]	1.92	0.28
1:A:393[B]:GLU:CD	6:A:2022:HOH:O[1_554]	2.17	0.03

5.3 Torsion angles [i](#)

5.3.1 Protein backbone [i](#)

In the following table, the Percentiles column shows the percent Ramachandran outliers of the chain as a percentile score with respect to all X-ray entries followed by that with respect to entries of similar resolution.

The Analysed column shows the number of residues for which the backbone conformation was analysed, and the total number of residues.

Mol	Chain	Analysed	Favoured	Allowed	Outliers	Percentiles	
1	A	407/410 (99%)	395 (97%)	12 (3%)	0	100	100
1	B	405/410 (99%)	392 (97%)	11 (3%)	2 (0%)	34	12
All	All	812/820 (99%)	787 (97%)	23 (3%)	2 (0%)	56	28

All (2) Ramachandran outliers are listed below:

Mol	Chain	Res	Type
1	B	183[A]	ASP
1	B	183[B]	ASP

5.3.2 Protein sidechains [i](#)

In the following table, the Percentiles column shows the percent sidechain outliers of the chain as a percentile score with respect to all X-ray entries followed by that with respect to entries of similar resolution.

The Analysed column shows the number of residues for which the sidechain conformation was analysed, and the total number of residues.

Mol	Chain	Analysed	Rotameric	Outliers	Percentiles	
1	A	375/372 (101%)	361 (96%)	14 (4%)	41	12
1	B	373/372 (100%)	364 (98%)	9 (2%)	57	26
All	All	748/744 (100%)	725 (97%)	23 (3%)	52	16

5 of 23 residues with a non-rotameric sidechain are listed below:

Mol	Chain	Res	Type
1	A	334[A]	LYS
1	A	408	MET
1	B	414	LYS
1	A	334[B]	LYS
1	A	455	LEU

Some sidechains can be flipped to improve hydrogen bonding and reduce clashes. 5 of 6 such sidechains are listed below:

Mol	Chain	Res	Type
1	A	351	GLN
1	B	133	ASN
1	A	410	HIS
1	A	317	ASN
1	A	413	HIS

5.3.3 RNA [i](#)

There are no RNA molecules in this entry.

5.4 Non-standard residues in protein, DNA, RNA chains [i](#)

There are no non-standard protein/DNA/RNA residues in this entry.

5.5 Carbohydrates [i](#)

There are no carbohydrates in this entry.

5.6 Ligand geometry [i](#)

Of 13 ligands modelled in this entry, 2 are monoatomic - leaving 11 for Mogul analysis.

In the following table, the Counts columns list the number of bonds (or angles) for which Mogul statistics could be retrieved, the number of bonds (or angles) that are observed in the model and the number of bonds (or angles) that are defined in the chemical component dictionary. The Link column lists molecule types, if any, to which the group is linked. The Z score for a bond length (or angle) is the number of standard deviations the observed value is removed from the expected value. A bond length (or angle) with $|Z| > 2$ is considered an outlier worth inspection. RMSZ is the root-mean-square of all Z scores of the bond lengths (or angles).

Mol	Type	Chain	Res	Link	Bond lengths			Bond angles		
					Counts	RMSZ	# Z > 2	Counts	RMSZ	# Z > 2
2	MYA	A	1497	3	53,65,65	1.10	5 (9%)	65,91,91	2.00	12 (18%)
4	CIT	A	1499	-	3,12,12	1.42	0	3,17,17	3.58	2 (66%)
5	GOL	A	1500	-	5,5,5	0.73	0	5,5,5	0.33	0
5	GOL	A	1501	-	5,5,5	0.45	0	5,5,5	0.97	0
5	GOL	A	1502	-	5,5,5	0.49	0	5,5,5	0.81	0
2	MYA	B	1497	3	53,65,65	1.15	3 (5%)	65,91,91	2.10	11 (16%)
4	CIT	B	1499	-	3,12,12	1.70	1 (33%)	3,17,17	1.08	0
5	GOL	B	1500	-	5,5,5	0.71	0	5,5,5	0.75	0
5	GOL	B	1501	-	5,5,5	0.90	0	5,5,5	0.74	0
5	GOL	B	1502	-	5,5,5	0.28	0	5,5,5	0.66	0
5	GOL	B	1503	-	5,5,5	0.69	0	5,5,5	1.30	0

In the following table, the Chirals column lists the number of chiral outliers, the number of chiral centers analysed, the number of these observed in the model and the number defined in the chemical component dictionary. Similar counts are reported in the Torsion and Rings columns. '-' means no outliers of that kind were identified.

Mol	Type	Chain	Res	Link	Chirals	Torsions	Rings
2	MYA	A	1497	3	-	0/59/80/80	0/3/3/3
4	CIT	A	1499	-	-	0/6/16/16	0/0/0/0
5	GOL	A	1500	-	-	0/4/4/4	0/0/0/0
5	GOL	A	1501	-	-	0/4/4/4	0/0/0/0
5	GOL	A	1502	-	-	0/4/4/4	0/0/0/0
2	MYA	B	1497	3	-	0/59/80/80	0/3/3/3
4	CIT	B	1499	-	-	0/6/16/16	0/0/0/0
5	GOL	B	1500	-	-	0/4/4/4	0/0/0/0
5	GOL	B	1501	-	-	0/4/4/4	0/0/0/0
5	GOL	B	1502	-	-	0/4/4/4	0/0/0/0
5	GOL	B	1503	-	-	0/4/4/4	0/0/0/0

The worst 5 of 9 bond length outliers are listed below:

Mol	Chain	Res	Type	Atoms	Z	Observed(Å)	Ideal(Å)
2	A	1497	MYA	P3X-O7A	-2.47	1.45	1.54
4	B	1499	CIT	C2-C3	-2.45	1.51	1.54
2	B	1497	MYA	P3X-O7A	-2.04	1.47	1.54
2	A	1497	MYA	C2A-N1A	2.02	1.37	1.33
2	A	1497	MYA	C2A-N3A	2.32	1.36	1.32

The worst 5 of 25 bond angle outliers are listed below:

Mol	Chain	Res	Type	Atoms	Z	Observed(°)	Ideal(°)
2	B	1497	MYA	N3A-C2A-N1A	-12.06	119.66	128.89
2	A	1497	MYA	N3A-C2A-N1A	-7.49	123.16	128.89
2	A	1497	MYA	C4A-C5A-N7A	-4.87	105.00	109.48
2	A	1497	MYA	O6A-C12-C11	-3.50	104.92	110.55
4	A	1499	CIT	C3-C2-C1	-3.42	109.49	114.96

There are no chirality outliers.

There are no torsion outliers.

There are no ring outliers.

4 monomers are involved in 24 short contacts:

Mol	Chain	Res	Type	Clashes	Symm-Clashes
4	B	1499	CIT	2	0
5	B	1500	GOL	14	0
5	B	1501	GOL	3	0
5	B	1503	GOL	5	0

5.7 Other polymers [i](#)

There are no such residues in this entry.

5.8 Polymer linkage issues [i](#)

There are no chain breaks in this entry.

6 Fit of model and data [i](#)

6.1 Protein, DNA and RNA chains [i](#)

In the following table, the column labelled ‘#RSRZ> 2’ contains the number (and percentage) of RSRZ outliers, followed by percent RSRZ outliers for the chain as percentile scores relative to all X-ray entries and entries of similar resolution. The OWAB column contains the minimum, median, 95th percentile and maximum values of the occupancy-weighted average B-factor per residue. The column labelled ‘Q< 0.9’ lists the number of (and percentage) of residues with an average occupancy less than 0.9.

Mol	Chain	Analysed	<RSRZ>	#RSRZ>2	OWAB(Å ²)	Q<0.9
1	A	382/410 (93%)	-0.37	8 (2%) 67 67	11, 19, 41, 84	0
1	B	382/410 (93%)	-0.32	2 (0%) 91 92	10, 16, 42, 70	0
All	All	764/820 (93%)	-0.35	10 (1%) 79 80	10, 17, 42, 84	0

The worst 5 of 10 RSRZ outliers are listed below:

Mol	Chain	Res	Type	RSRZ
1	A	316	ARG	6.7
1	B	317	ASN	4.0
1	A	409	ASN	3.1
1	A	317	ASN	2.8
1	A	314	LEU	2.8

6.2 Non-standard residues in protein, DNA, RNA chains [i](#)

There are no non-standard protein/DNA/RNA residues in this entry.

6.3 Carbohydrates [i](#)

There are no carbohydrates in this entry.

6.4 Ligands [i](#)

In the following table, the Atoms column lists the number of modelled atoms in the group and the number defined in the chemical component dictionary. LLDF column lists the quality of electron density of the group with respect to its neighbouring residues in protein, DNA or RNA chains. The B-factors column lists the minimum, median, 95th percentile and maximum values of B factors of atoms in the group. The column labelled ‘Q< 0.9’ lists the number of atoms with occupancy less than 0.9.

Mol	Type	Chain	Res	Atoms	RSCC	RSR	LLDF	B-factors(\AA^2)	Q<0.9
4	CIT	A	1499	13/13	0.81	0.21	14.32	35,43,45,45	0
4	CIT	B	1499	13/13	0.86	0.15	8.18	27,33,40,41	0
5	GOL	A	1501	6/6	0.87	0.18	6.74	27,36,41,55	0
5	GOL	B	1503	6/6	0.78	0.28	6.03	31,33,34,40	0
5	GOL	A	1502	6/6	0.81	0.27	5.96	42,47,48,49	0
5	GOL	A	1500	6/6	0.96	0.15	5.03	21,23,26,30	0
5	GOL	B	1501	6/6	0.71	0.29	4.58	29,33,38,38	0
5	GOL	B	1502	6/6	0.89	0.18	3.55	32,41,43,45	0
5	GOL	B	1500	6/6	0.92	0.10	1.33	19,23,26,32	0
3	MG	A	1498	1/1	0.97	0.09	-0.06	28,28,28,28	0
2	MYA	B	1497	63/63	0.98	0.07	-0.34	9,14,18,20	0
2	MYA	A	1497	63/63	0.97	0.06	-0.49	9,16,21,23	0
3	MG	B	1498	1/1	1.00	0.03	-2.46	25,25,25,25	0

6.5 Other polymers [i](#)

There are no such residues in this entry.