



# Full wwPDB X-ray Structure Validation Report ⓘ

Feb 1, 2016 – 03:18 PM GMT

PDB ID : 4C39  
Title : Structure of rat neuronal nitric oxide synthase heme domain in complex with 6-((((3S, 5R)-5-(((6-amino-4-methylpyridin-2-yl)methoxy) methyl)pyrrolidin-3-yl)oxy)methyl)-4-methylpyridin-2-amine  
Authors : Li, H.; Poulos, T.L.  
Deposited on : 2013-08-22  
Resolution : 1.98 Å(reported)

This is a Full wwPDB X-ray Structure Validation Report for a publicly released PDB entry.  
We welcome your comments at [validation@mail.wwpdb.org](mailto:validation@mail.wwpdb.org)  
A user guide is available at  
<http://wwpdb.org/validation/2016/XrayValidationReportHelp>  
with specific help available everywhere you see the ⓘ symbol.

---

The following versions of software and data (see [references ⓘ](#)) were used in the production of this report:

MolProbity : 4.02b-467  
Mogul : 1.7 (RC4), CSD as536be (2015)  
Xtriage (Phenix) : 1.9-1692  
EDS : rb-20026688  
Percentile statistics : 20151230.v01 (using entries in the PDB archive December 30th 2015)  
Refmac : 5.8.0135  
CCP4 : 6.5.0  
Ideal geometry (proteins) : Engh & Huber (2001)  
Ideal geometry (DNA, RNA) : Parkinson et al. (1996)  
Validation Pipeline (wwPDB-VP) : trunk26865

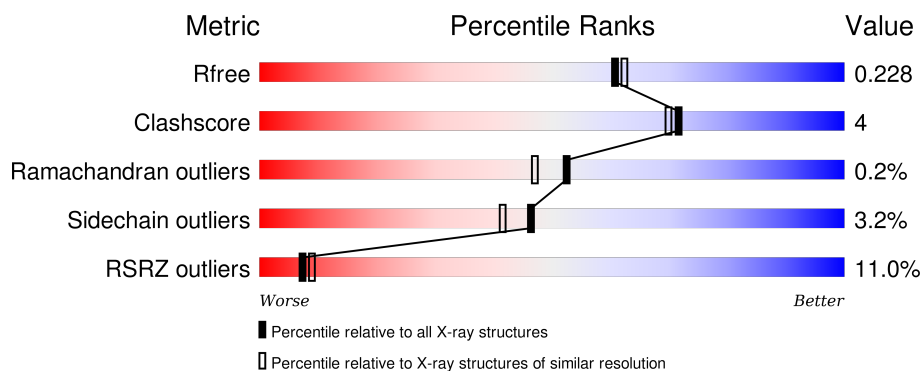
# 1 Overall quality at a glance

The following experimental techniques were used to determine the structure:

## *X-RAY DIFFRACTION*

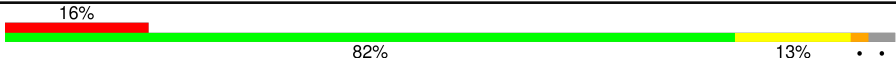

The reported resolution of this entry is 1.98 Å.

Percentile scores (ranging between 0-100) for global validation metrics of the entry are shown in the following graphic. The table shows the number of entries on which the scores are based.



Metric	Whole archive (#Entries)	Similar resolution (#Entries, resolution range(Å))
$R_{free}$	91344	8664 (2.00-1.96)
Clashscore	102246	9905 (2.00-1.96)
Ramachandran outliers	100387	9792 (2.00-1.96)
Sidechain outliers	100360	9791 (2.00-1.96)
RSRZ outliers	91569	8679 (2.00-1.96)

The table below summarises the geometric issues observed across the polymeric chains and their fit to the electron density. The red, orange, yellow and green segments on the lower bar indicate the fraction of residues that contain outliers for  $\geq 3$ , 2, 1 and 0 types of geometric quality criteria. A grey segment represents the fraction of residues that are not modelled. The numeric value for each fraction is indicated below the corresponding segment, with a dot representing fractions  $\leq 5\%$ . The upper red bar (where present) indicates the fraction of residues that have poor fit to the electron density. The numeric value is given above the bar.

Mol	Chain	Length	Quality of chain
1	A	422	
1	B	422	

The following table lists non-polymeric compounds, carbohydrate monomers and non-standard residues in protein, DNA, RNA chains that are outliers for geometric or electron-density-fit criteria:

Mol	Type	Chain	Res	Chirality	Geometry	Clashes	Electron density
5	ACT	A	860	-	-	-	X

## 2 Entry composition [i](#)

There are 7 unique types of molecules in this entry. The entry contains 7179 atoms, of which 0 are hydrogens and 0 are deuteriums.

In the tables below, the ZeroOcc column contains the number of atoms modelled with zero occupancy, the AltConf column contains the number of residues with at least one atom in alternate conformation and the Trace column contains the number of residues modelled with at most 2 atoms.

- Molecule 1 is a protein called NITRIC OXIDE SYNTHASE, BRAIN.

Mol	Chain	Residues	Atoms					ZeroOcc	AltConf	Trace
1	A	408	Total	C	N	O	S	0	0	1
			3314	2121	567	605	21			
1	B	411	Total	C	N	O	S	0	0	0
			3345	2140	574	610	21			

- Molecule 2 is PROTOPORPHYRIN IX CONTAINING FE (three-letter code: HEM) (formula:  $C_{34}H_{32}FeN_4O_4$ ).



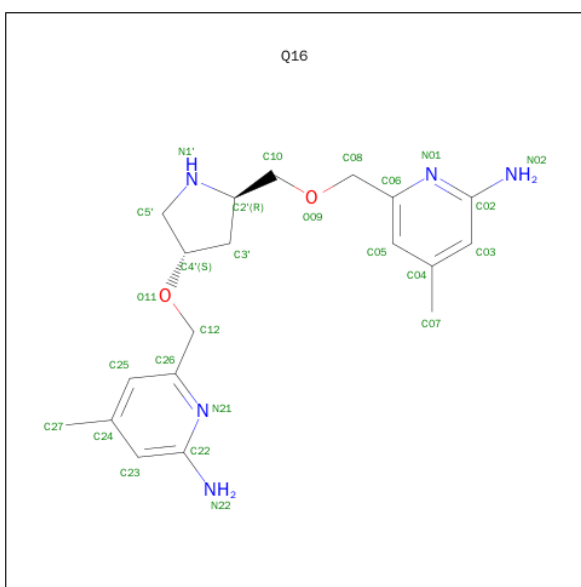
Mol	Chain	Residues	Atoms					ZeroOcc	AltConf
2	A	1	Total	C	Fe	N	O	0	0
			43	34	1	4	4		
2	B	1	Total	C	Fe	N	O	0	0
			43	34	1	4	4		

- Molecule 3 is 5,6,7,8-TETRAHYDROBIOPTERIN (three-letter code: H4B) (formula:  $C_9H_{15}N_5O_3$ ).



Mol	Chain	Residues	Atoms				ZeroOcc	AltConf
3	A	1	Total	C	N	O	0	0
			17	9	5	3		
3	B	1	Total	C	N	O	0	0
			17	9	5	3		

- Molecule 4 is 6-((((3S, 5R)-5-(((6-AMINO-4-METHYLPYRIDIN-2-YL)METHOXY)METHYL)PYRROLIDIN-3-YL)OXY)METHYL)-4-METHYLPYRIDIN-2-AMINE (three-letter code: Q16) (formula: C<sub>19</sub>H<sub>27</sub>N<sub>5</sub>O<sub>2</sub>).



Mol	Chain	Residues	Atoms				ZeroOcc	AltConf
4	A	1	Total	C	N	O	0	0
			26	19	5	2		

Continued on next page...

*Continued from previous page...*

Mol	Chain	Residues	Atoms				ZeroOcc	AltConf
4	B	1	Total	C	N	O	0	0
			26	19	5	2		

- Molecule 5 is ACETATE ION (three-letter code: ACT) (formula: C<sub>2</sub>H<sub>3</sub>O<sub>2</sub>).



Mol	Chain	Residues	Atoms			ZeroOcc	AltConf
5	A	1	Total	C	O	0	0
			4	2	2		
5	B	1	Total	C	O	0	0
			4	2	2		

- Molecule 6 is ZINC ION (three-letter code: ZN) (formula: Zn).

Mol	Chain	Residues	Atoms		ZeroOcc	AltConf
6	A	1	Total	Zn	0	0
			1	1		

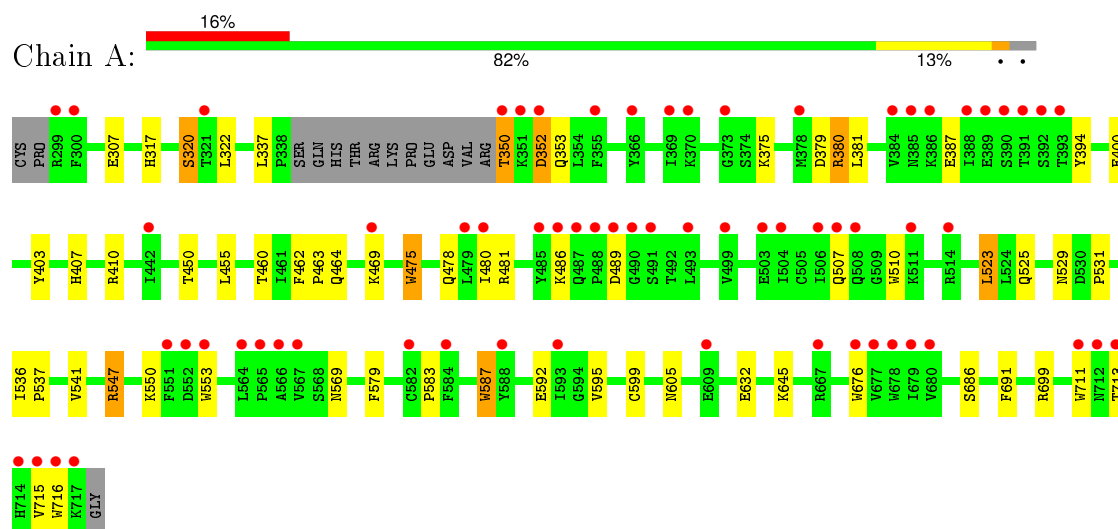
- Molecule 7 is water.

Mol	Chain	Residues	Atoms		ZeroOcc	AltConf
7	A	139	Total	O	0	0
			139	139		
7	B	200	Total	O	0	0
			200	200		

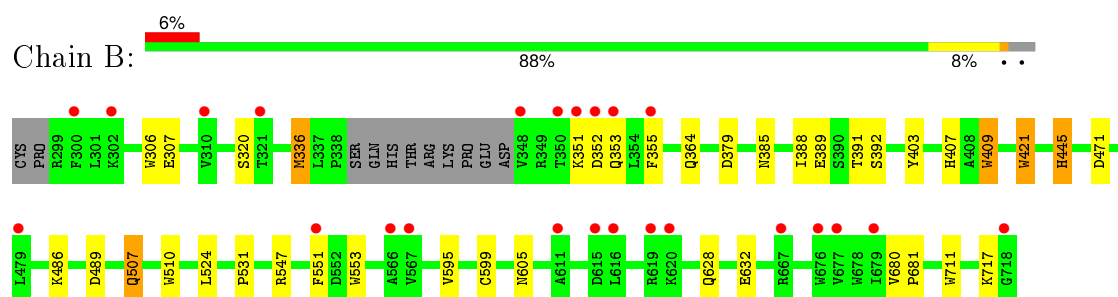
### 3 Residue-property plots [i](#)

These plots are drawn for all protein, RNA and DNA chains in the entry. The first graphic for a chain summarises the proportions of errors displayed in the second graphic. The second graphic shows the sequence view annotated by issues in geometry and electron density. Residues are color-coded according to the number of geometric quality criteria for which they contain at least one outlier: green = 0, yellow = 1, orange = 2 and red = 3 or more. A red dot above a residue indicates a poor fit to the electron density ( $RSRZ > 2$ ). Stretches of 2 or more consecutive residues without any outlier are shown as a green connector. Residues present in the sample, but not in the model, are shown in grey.

#### • Molecule 1: NITRIC OXIDE SYNTHASE, BRAIN



#### • Molecule 1: NITRIC OXIDE SYNTHASE, BRAIN



## 4 Data and refinement statistics

Property	Value	Source
Space group	P 21 21 21	Depositor
Cell constants a, b, c, $\alpha$ , $\beta$ , $\gamma$	51.93Å 110.87Å 164.44Å 90.00° 90.00° 90.00°	Depositor
Resolution (Å)	92.19 – 1.98 40.82 – 1.98	Depositor EDS
% Data completeness (in resolution range)	99.6 (92.19-1.98) 99.4 (40.82-1.98)	Depositor EDS
$R_{merge}$	0.06	Depositor
$R_{sym}$	(Not available)	Depositor
$\langle I/\sigma(I) \rangle$ <sup>1</sup>	2.21 (at 1.98Å)	Xtriage
Refinement program	REFMAC 5.6.0117	Depositor
R, $R_{free}$	0.181 , 0.228 0.180 , 0.228	Depositor DCC
$R_{free}$ test set	3293 reflections (5.18%)	DCC
Wilson B-factor (Å <sup>2</sup> )	32.3	Xtriage
Anisotropy	0.753	Xtriage
Bulk solvent $k_{sol}$ (e/Å <sup>3</sup> ), $B_{sol}$ (Å <sup>2</sup> )	0.36 , 42.7	EDS
Estimated twinning fraction	No twinning to report.	Xtriage
L-test for twinning <sup>2</sup>	$\langle  L  \rangle = 0.48$ , $\langle L^2 \rangle = 0.32$	Xtriage
Outliers	2 of 66876 reflections (0.003%)	Xtriage
$F_o, F_c$ correlation	0.97	EDS
Total number of atoms	7179	wwPDB-VP
Average B, all atoms (Å <sup>2</sup> )	47.0	wwPDB-VP

Xtriage's analysis on translational NCS is as follows: *The largest off-origin peak in the Patterson function is 4.71% of the height of the origin peak. No significant pseudotranslation is detected.*

<sup>1</sup>Intensities estimated from amplitudes.

<sup>2</sup>Theoretical values of  $\langle |L| \rangle$ ,  $\langle L^2 \rangle$  for acentric reflections are 0.5, 0.375 respectively for untwinned datasets, and 0.333, 0.2 for perfectly twinned datasets.



## 5 Model quality [i](#)

### 5.1 Standard geometry [i](#)

Bond lengths and bond angles in the following residue types are not validated in this section: HEM, ZN, Q16, H4B, ACT

The Z score for a bond length (or angle) is the number of standard deviations the observed value is removed from the expected value. A bond length (or angle) with  $|Z| > 5$  is considered an outlier worth inspection. RMSZ is the root-mean-square of all Z scores of the bond lengths (or angles).

Mol	Chain	Bond lengths		Bond angles	
		RMSZ	# $ Z  > 5$	RMSZ	# $ Z  > 5$
1	A	0.77	7/3407 (0.2%)	0.77	2/4623 (0.0%)
1	B	0.82	6/3438 (0.2%)	0.79	3/4661 (0.1%)
All	All	0.79	13/6845 (0.2%)	0.78	5/9284 (0.1%)

All (13) bond length outliers are listed below:

Mol	Chain	Res	Type	Atoms	Z	Observed(Å)	Ideal(Å)
1	A	676	TRP	CD2-CE2	6.22	1.48	1.41
1	A	587	TRP	CD2-CE2	5.56	1.48	1.41
1	B	711	TRP	CD2-CE2	5.54	1.48	1.41
1	A	716	TRP	CD2-CE2	5.49	1.48	1.41
1	B	409	TRP	CD2-CE2	5.46	1.47	1.41
1	B	553	TRP	CD2-CE2	5.41	1.47	1.41
1	B	421	TRP	CD2-CE2	5.37	1.47	1.41
1	B	306	TRP	CD2-CE2	5.34	1.47	1.41
1	A	475	TRP	CD2-CE2	5.27	1.47	1.41
1	A	510	TRP	CD2-CE2	5.27	1.47	1.41
1	A	553	TRP	CD2-CE2	5.22	1.47	1.41
1	A	711	TRP	CD2-CE2	5.02	1.47	1.41
1	B	510	TRP	CD2-CE2	5.02	1.47	1.41

All (5) bond angle outliers are listed below:

Mol	Chain	Res	Type	Atoms	Z	Observed(°)	Ideal(°)
1	B	471	ASP	CB-CG-OD1	5.44	123.19	118.30
1	A	410	ARG	NE-CZ-NH1	5.40	123.00	120.30
1	A	547	ARG	NE-CZ-NH1	5.22	122.91	120.30
1	B	489	ASP	CB-CG-OD1	5.15	122.93	118.30
1	B	379	ASP	CB-CG-OD1	5.05	122.85	118.30

There are no chirality outliers.

There are no planarity outliers.

## 5.2 Too-close contacts

In the following table, the Non-H and H(model) columns list the number of non-hydrogen atoms and hydrogen atoms in the chain respectively. The H(added) column lists the number of hydrogen atoms added and optimized by MolProbity. The Clashes column lists the number of clashes within the asymmetric unit, whereas Symm-Clashes lists symmetry related clashes.

Mol	Chain	Non-H	H(model)	H(added)	Clashes	Symm-Clashes
1	A	3314	0	3221	31	0
1	B	3345	0	3259	18	0
2	A	43	0	30	5	0
2	B	43	0	30	6	0
3	A	17	0	15	0	0
3	B	17	0	15	1	0
4	A	26	0	27	8	0
4	B	26	0	27	3	0
5	A	4	0	3	0	0
5	B	4	0	3	0	0
6	A	1	0	0	0	0
7	A	139	0	0	2	0
7	B	200	0	0	4	0
All	All	7179	0	6630	58	0

The all-atom clashscore is defined as the number of clashes found per 1000 atoms (including hydrogen atoms). The all-atom clashscore for this structure is 4.

All (58) close contacts within the same asymmetric unit are listed below, sorted by their clash magnitude.

Atom-1	Atom-2	Interatomic distance (Å)	Clash overlap (Å)
2:B:750:HEM:HBA1	4:B:800:Q16:H082	1.67	0.76
2:A:750:HEM:HMC2	2:A:750:HEM:HBC2	1.67	0.75
7:A:2102:HOH:O	1:B:307:GLU:HG3	1.95	0.67
1:B:355:PHE:CE1	1:B:385:ASN:HB2	2.30	0.66
1:A:375:LYS:NZ	1:A:379:ASP:OD2	2.33	0.61
1:B:364:GLN:NE2	7:B:2022:HOH:O	2.33	0.60
1:A:337:LEU:HD21	4:A:800:Q16:H273	1.83	0.60
1:B:351:LYS:HE2	1:B:389:GLU:HA	1.85	0.58
2:B:750:HEM:C1C	4:B:800:Q16:H073	2.40	0.57
1:A:478:GLN:HB2	1:A:481:ARG:HG3	1.87	0.56

*Continued on next page...*

*Continued from previous page...*

Atom-1	Atom-2	Interatomic distance (Å)	Clash overlap (Å)
2:A:750:HEM:CMC	2:A:750:HEM:HBC2	2.33	0.55
2:B:750:HEM:HHC	2:B:750:HEM:HBB2	1.90	0.54
1:A:525:GLN:HG3	1:A:529:ASN:O	2.08	0.53
1:A:350:THR:N	1:A:353:GLN:NE2	2.58	0.52
1:A:380:ARG:HD3	1:A:400:GLU:OE2	2.10	0.52
1:A:337:LEU:CD2	4:A:800:Q16:H23	2.40	0.51
2:A:750:HEM:C1C	4:A:800:Q16:H073	2.45	0.51
1:A:480:ILE:HD13	1:A:541:VAL:HG13	1.92	0.51
1:B:403:TYR:CE1	1:B:407:HIS:CE1	2.99	0.50
1:A:322:LEU:HB2	1:A:699:ARG:HE	1.76	0.50
1:A:317:HIS:O	1:A:320:SER:HB3	2.13	0.49
1:A:455:LEU:HD12	1:A:587:TRP:HB3	1.94	0.49
1:A:605:ASN:ND2	7:A:2100:HOH:O	2.39	0.49
1:A:337:LEU:HD21	4:A:800:Q16:C27	2.43	0.49
1:A:523:LEU:HD22	1:A:531:PRO:HB2	1.94	0.48
1:B:388:ILE:O	1:B:392:SER:N	2.42	0.48
1:A:475:TRP:HB2	1:A:523:LEU:HB3	1.95	0.48
4:A:800:Q16:H5'1	4:A:800:Q16:H122	1.57	0.47
1:B:336:MET:HE2	3:B:760:H4B:H9	1.97	0.47
1:A:350:THR:N	1:A:353:GLN:HE21	2.13	0.47
1:B:409:TRP:CE3	1:B:421:TRP:HA	2.50	0.47
2:B:750:HEM:HHC	2:B:750:HEM:CBB	2.45	0.47
1:A:352:ASP:N	1:A:352:ASP:OD1	2.47	0.47
1:A:592:GLU:OE1	4:A:800:Q16:N01	2.49	0.46
2:B:750:HEM:O2A	4:B:800:Q16:H5'2	2.16	0.46
1:A:337:LEU:HD21	4:A:800:Q16:H23	1.97	0.46
1:B:595:VAL:O	1:B:599:CYS:HB2	2.16	0.46
1:A:307:GLU:HG3	7:B:2172:HOH:O	2.15	0.45
1:A:632:GLU:OE2	1:B:628:GLN:NE2	2.50	0.45
1:B:391:THR:O	1:B:392:SER:HB2	2.17	0.45
1:A:686:SER:HA	1:A:691:PHE:CG	2.52	0.44
1:B:605:ASN:ND2	7:B:2171:HOH:O	2.48	0.44
1:A:587:TRP:H	2:A:750:HEM:CAB	2.31	0.44
1:B:445:HIS:C	1:B:445:HIS:CD2	2.92	0.43
1:B:680:VAL:HA	1:B:681:PRO:HD3	1.92	0.42
1:B:551:PHE:HE2	1:B:632:GLU:HG3	1.84	0.42
1:B:524:LEU:O	1:B:531:PRO:HA	2.20	0.42
1:A:403:TYR:CE1	1:A:407:HIS:CE1	3.08	0.42
1:A:460:THR:O	1:A:583:PRO:HD2	2.19	0.41
2:A:750:HEM:NC	4:A:800:Q16:H073	2.35	0.41
1:A:464:GLN:HB3	1:A:579:PHE:CE1	2.56	0.41

*Continued on next page...*

*Continued from previous page...*

Atom-1	Atom-2	Interatomic distance (Å)	Clash overlap (Å)
1:B:409:TRP:CH2	2:B:750:HEM:HMC3	2.56	0.41
1:A:450:THR:HA	1:A:455:LEU:HD22	2.02	0.41
1:A:462:PHE:HB3	1:A:463:PRO:CD	2.51	0.41
1:B:507:GLN:NE2	7:B:2127:HOH:O	2.53	0.41
1:A:595:VAL:O	1:A:599:CYS:HB2	2.22	0.40
1:A:536:ILE:O	1:A:537:PRO:C	2.58	0.40
1:A:387:GLU:OE2	1:A:394:TYR:HA	2.21	0.40

There are no symmetry-related clashes.

## 5.3 Torsion angles [i](#)

### 5.3.1 Protein backbone [i](#)

In the following table, the Percentiles column shows the percent Ramachandran outliers of the chain as a percentile score with respect to all X-ray entries followed by that with respect to entries of similar resolution.

The Analysed column shows the number of residues for which the backbone conformation was analysed, and the total number of residues.

Mol	Chain	Analysed	Favoured	Allowed	Outliers	Percentiles	
1	A	404/422 (96%)	393 (97%)	10 (2%)	1 (0%)	52	47
1	B	407/422 (96%)	397 (98%)	9 (2%)	1 (0%)	52	47
All	All	811/844 (96%)	790 (97%)	19 (2%)	2 (0%)	52	47

All (2) Ramachandran outliers are listed below:

Mol	Chain	Res	Type
1	A	489	ASP
1	B	352	ASP

### 5.3.2 Protein sidechains [i](#)

In the following table, the Percentiles column shows the percent sidechain outliers of the chain as a percentile score with respect to all X-ray entries followed by that with respect to entries of similar resolution.

The Analysed column shows the number of residues for which the sidechain conformation was analysed, and the total number of residues.

Mol	Chain	Analysed	Rotameric	Outliers	Percentiles	
1	A	363/377 (96%)	348 (96%)	15 (4%)	37	30
1	B	366/377 (97%)	358 (98%)	8 (2%)	60	59
All	All	729/754 (97%)	706 (97%)	23 (3%)	46	41

All (23) residues with a non-rotameric sidechain are listed below:

Mol	Chain	Res	Type
1	A	320	SER
1	A	350	THR
1	A	352	ASP
1	A	380	ARG
1	A	381	LEU
1	A	469	LYS
1	A	486	LYS
1	A	507	GLN
1	A	523	LEU
1	A	547	ARG
1	A	550	LYS
1	A	569	ASN
1	A	645	LYS
1	A	713	THR
1	A	715	VAL
1	B	320	SER
1	B	336	MET
1	B	353	GLN
1	B	445	HIS
1	B	486	LYS
1	B	507	GLN
1	B	547	ARG
1	B	717	LYS

Some sidechains can be flipped to improve hydrogen bonding and reduce clashes. All (13) such sidechains are listed below:

Mol	Chain	Res	Type
1	A	353	GLN
1	A	454	ASN
1	A	527	ASN
1	A	569	ASN
1	A	605	ASN
1	A	697	ASN
1	B	364	GLN

*Continued on next page...*

*Continued from previous page...*

Mol	Chain	Res	Type
1	B	454	ASN
1	B	535	GLN
1	B	601	ASN
1	B	605	ASN
1	B	642	GLN
1	B	697	ASN

### 5.3.3 RNA ⓘ

There are no RNA molecules in this entry.

## 5.4 Non-standard residues in protein, DNA, RNA chains ⓘ

There are no non-standard protein/DNA/RNA residues in this entry.

## 5.5 Carbohydrates ⓘ

There are no carbohydrates in this entry.

## 5.6 Ligand geometry ⓘ

Of 9 ligands modelled in this entry, 1 is monoatomic - leaving 8 for Mogul analysis.

In the following table, the Counts columns list the number of bonds (or angles) for which Mogul statistics could be retrieved, the number of bonds (or angles) that are observed in the model and the number of bonds (or angles) that are defined in the chemical component dictionary. The Link column lists molecule types, if any, to which the group is linked. The Z score for a bond length (or angle) is the number of standard deviations the observed value is removed from the expected value. A bond length (or angle) with  $|Z| > 2$  is considered an outlier worth inspection. RMSZ is the root-mean-square of all Z scores of the bond lengths (or angles).

Mol	Type	Chain	Res	Link	Bond lengths			Bond angles		
					Counts	RMSZ	$\# Z  > 2$	Counts	RMSZ	$\# Z  > 2$
2	HEM	A	750	1	30,50,50	2.87	13 (43%)	24,82,82	2.80	10 (41%)
3	H4B	A	760	-	13,18,18	0.92	0	11,26,26	2.93	6 (54%)
4	Q16	A	800	-	28,28,28	0.93	0	30,38,38	2.21	10 (33%)
5	ACT	A	860	-	1,3,3	2.16	1 (100%)	0,3,3	0.00	-
2	HEM	B	750	1	30,50,50	2.38	11 (36%)	24,82,82	3.09	10 (41%)
3	H4B	B	760	-	13,18,18	1.08	1 (7%)	11,26,26	2.48	4 (36%)

Mol	Type	Chain	Res	Link	Bond lengths			Bond angles		
					Counts	RMSZ	# Z  > 2	Counts	RMSZ	# Z  > 2
4	Q16	B	800	-	28,28,28	0.83	1 (3%)	30,38,38	2.37	9 (30%)
5	ACT	B	860	-	1,3,3	1.77	0	0,3,3	0.00	-

In the following table, the Chirals column lists the number of chiral outliers, the number of chiral centers analysed, the number of these observed in the model and the number defined in the chemical component dictionary. Similar counts are reported in the Torsion and Rings columns. '-' means no outliers of that kind were identified.

Mol	Type	Chain	Res	Link	Chirals	Torsions	Rings
2	HEM	A	750	1	-	0/10/54/54	0/0/8/8
3	H4B	A	760	-	-	0/8/17/17	0/2/2/2
4	Q16	A	800	-	-	0/11/20/20	0/3/3/3
5	ACT	A	860	-	-	0/0/0/0	0/0/0/0
2	HEM	B	750	1	-	0/10/54/54	0/0/8/8
3	H4B	B	760	-	-	0/8/17/17	0/2/2/2
4	Q16	B	800	-	-	0/11/20/20	0/3/3/3
5	ACT	B	860	-	-	0/0/0/0	0/0/0/0

All (27) bond length outliers are listed below:

Mol	Chain	Res	Type	Atoms	Z	Observed(Å)	Ideal(Å)
2	A	750	HEM	C3D-C4D	-5.27	1.44	1.51
2	A	750	HEM	C3B-C4B	-4.53	1.47	1.51
2	B	750	HEM	C3D-C4D	-4.37	1.46	1.51
2	B	750	HEM	C2C-C1C	-3.00	1.46	1.52
2	B	750	HEM	C2D-C3D	-2.78	1.46	1.54
2	A	750	HEM	C2D-C3D	-2.42	1.47	1.54
3	B	760	H4B	C7-N8	2.04	1.48	1.46
4	B	800	Q16	C26-N21	2.12	1.38	1.34
5	A	860	ACT	CH3-C	2.16	1.51	1.48
2	A	750	HEM	FE-ND	2.22	2.09	1.97
2	A	750	HEM	C2A-C3A	2.26	1.44	1.37
2	B	750	HEM	C1A-CHA	2.40	1.46	1.39
2	B	750	HEM	FE-ND	2.41	2.10	1.97
2	A	750	HEM	C4A-CHB	2.51	1.46	1.39
2	B	750	HEM	CHC-C4B	2.56	1.46	1.38
2	B	750	HEM	C2A-C3A	2.57	1.45	1.37
2	A	750	HEM	FE-NB	2.75	2.12	1.97
2	A	750	HEM	CHD-C1D	2.99	1.47	1.38
2	A	750	HEM	CHC-C4B	3.01	1.47	1.38
2	B	750	HEM	CHC-C1C	3.73	1.45	1.36
2	B	750	HEM	CHD-C4C	4.42	1.46	1.36

*Continued on next page...*

*Continued from previous page...*

Mol	Chain	Res	Type	Atoms	Z	Observed(Å)	Ideal(Å)
2	A	750	HEM	CHC-C1C	4.84	1.47	1.36
2	B	750	HEM	C4C-NC	5.09	1.42	1.36
2	B	750	HEM	C1C-NC	5.41	1.42	1.36
2	A	750	HEM	C4C-NC	5.64	1.43	1.36
2	A	750	HEM	CHD-C4C	5.69	1.49	1.36
2	A	750	HEM	C1C-NC	6.84	1.44	1.36

All (49) bond angle outliers are listed below:

Mol	Chain	Res	Type	Atoms	Z	Observed(°)	Ideal(°)
2	B	750	HEM	CBA-CAA-C2A	-7.66	98.79	112.53
2	A	750	HEM	CBA-CAA-C2A	-6.00	101.78	112.53
4	A	800	Q16	C24-C25-C26	-5.74	116.69	120.28
2	B	750	HEM	C3B-CAB-CBB	-4.19	118.03	124.46
4	B	800	Q16	C24-C25-C26	-4.17	117.67	120.28
3	A	760	H4B	N3-C2-N1	-3.67	119.52	125.53
4	A	800	Q16	C05-C06-N01	-3.31	119.22	122.96
2	A	750	HEM	C3C-CAC-CBC	-3.27	119.44	124.46
4	B	800	Q16	C05-C06-N01	-3.21	119.33	122.96
2	A	750	HEM	CBD-CAD-C3D	-3.17	104.32	113.55
2	A	750	HEM	C3B-CAB-CBB	-2.60	120.46	124.46
4	A	800	Q16	C12-C26-C25	-2.58	117.26	120.75
3	B	760	H4B	N3-C2-N1	-2.48	121.47	125.53
4	B	800	Q16	C12-C26-C25	-2.38	117.52	120.75
4	A	800	Q16	C08-O09-C10	-2.23	107.47	112.81
2	B	750	HEM	C3C-CAC-CBC	-2.23	121.04	124.46
2	B	750	HEM	CBD-CAD-C3D	-2.18	107.21	113.55
4	A	800	Q16	C27-C24-C25	-2.11	117.74	120.95
4	A	800	Q16	C12-C26-N21	2.05	120.13	115.83
2	A	750	HEM	C3B-C4B-NB	2.10	115.66	111.63
2	B	750	HEM	C2C-C1C-NC	2.27	114.04	110.21
3	B	760	H4B	N2-C2-N1	2.42	121.21	117.20
4	B	800	Q16	C12-C26-N21	2.43	120.93	115.83
4	B	800	Q16	C4'-C3'-C2'	2.51	108.05	102.69
4	A	800	Q16	N22-C22-N21	2.57	121.19	116.50
4	B	800	Q16	N22-C22-N21	2.81	121.62	116.50
2	A	750	HEM	CMD-C2D-C3D	3.06	127.91	114.35
4	B	800	Q16	O09-C08-C06	3.10	120.01	110.87
2	B	750	HEM	CMD-C2D-C3D	3.24	128.70	114.35
3	A	760	H4B	C2-N1-C8A	3.27	121.90	114.54
3	A	760	H4B	N2-C2-N3	3.42	122.86	117.20
4	A	800	Q16	C02-N01-C06	3.43	120.67	118.23

*Continued on next page...*



*Continued from previous page...*

Mol	Chain	Res	Type	Atoms	Z	Observed(°)	Ideal(°)
4	A	800	Q16	C3'-C4'-C5'	3.46	106.81	103.59
3	A	760	H4B	C4A-C8A-N8	3.90	123.02	118.43
3	B	760	H4B	C4-N3-C2	4.17	121.72	115.94
3	A	760	H4B	C4-N3-C2	4.17	121.72	115.94
2	A	750	HEM	CAD-C3D-C4D	4.26	127.49	112.47
2	B	750	HEM	CAD-C3D-C4D	4.60	128.68	112.47
2	A	750	HEM	CMB-C2B-C3B	4.64	128.11	116.53
3	A	760	H4B	C4-C4A-C8A	4.98	119.07	114.56
4	B	800	Q16	C22-N21-C26	5.08	121.84	118.23
2	B	750	HEM	CAD-C3D-C2D	5.23	128.25	113.22
3	B	760	H4B	C4-C4A-C8A	5.33	119.39	114.56
2	A	750	HEM	CAD-C3D-C2D	5.36	128.62	113.22
2	A	750	HEM	CMC-C2C-C3C	5.42	130.07	116.53
4	A	800	Q16	C22-N21-C26	5.49	122.13	118.23
2	B	750	HEM	CMC-C2C-C3C	5.68	130.72	116.53
2	B	750	HEM	CMB-C2B-C3B	5.73	130.83	116.53
4	B	800	Q16	C02-N01-C06	7.30	123.42	118.23

There are no chirality outliers.

There are no torsion outliers.

There are no ring outliers.

5 monomers are involved in 18 short contacts:

Mol	Chain	Res	Type	Clashes	Symm-Clashes
2	A	750	HEM	5	0
4	A	800	Q16	8	0
2	B	750	HEM	6	0
3	B	760	H4B	1	0
4	B	800	Q16	3	0

## 5.7 Other polymers [i](#)

There are no such residues in this entry.

## 5.8 Polymer linkage issues [i](#)

There are no chain breaks in this entry.

## 6 Fit of model and data ⓘ

### 6.1 Protein, DNA and RNA chains ⓘ

In the following table, the column labelled ‘#RSRZ> 2’ contains the number (and percentage) of RSRZ outliers, followed by percent RSRZ outliers for the chain as percentile scores relative to all X-ray entries and entries of similar resolution. The OWAB column contains the minimum, median, 95<sup>th</sup> percentile and maximum values of the occupancy-weighted average B-factor per residue. The column labelled ‘Q< 0.9’ lists the number of (and percentage) of residues with an average occupancy less than 0.9.

Mol	Chain	Analysed	<RSRZ>	#RSRZ>2	OWAB(Å <sup>2</sup> )	Q<0.9
1	A	408/422 (96%)	0.87	66 (16%) 3 3	25, 49, 91, 118	0
1	B	411/422 (97%)	0.30	24 (5%) 26 30	25, 39, 67, 90	0
All	All	819/844 (97%)	0.58	90 (10%) 7 9	25, 43, 83, 118	0

All (90) RSRZ outliers are listed below:

Mol	Chain	Res	Type	RSRZ
1	B	300	PHE	8.3
1	A	716	TRP	7.8
1	A	715	VAL	7.2
1	A	717	LYS	5.8
1	A	355	PHE	5.8
1	A	488	PRO	5.5
1	B	348	VAL	5.2
1	A	352	ASP	5.2
1	B	350	THR	4.7
1	A	713	THR	4.6
1	B	718	GLY	4.4
1	A	506	ILE	4.4
1	A	507	GLN	4.4
1	A	300	PHE	4.1
1	B	619	ARG	4.0
1	A	299	ARG	4.0
1	A	567	VAL	3.8
1	B	616	LEU	3.7
1	A	351	LYS	3.6
1	A	714	HIS	3.6
1	A	490	GLY	3.6
1	B	352	ASP	3.6
1	A	503	GLU	3.5
1	A	491	SER	3.5

*Continued on next page...*

*Continued from previous page...*

Mol	Chain	Res	Type	RSRZ
1	A	678	TRP	3.5
1	A	508	GLN	3.4
1	B	321	THR	3.4
1	A	712	ASN	3.3
1	A	370	LYS	3.3
1	A	373	GLY	3.2
1	A	486	LYS	3.2
1	A	469	LYS	3.2
1	A	321	THR	3.2
1	A	514	ARG	3.1
1	A	489	ASP	3.1
1	B	351	LYS	3.1
1	A	511	LYS	3.1
1	A	551	PHE	3.1
1	A	677	VAL	3.1
1	B	567	VAL	3.1
1	A	392	SER	3.0
1	A	504	ILE	3.0
1	A	390	SER	3.0
1	A	386	LYS	3.0
1	B	566	ALA	2.9
1	A	480	ILE	2.9
1	A	389	GLU	2.7
1	A	676	TRP	2.7
1	B	667	ARG	2.7
1	A	584	PHE	2.7
1	B	611	ALA	2.6
1	A	493	LEU	2.6
1	A	385	ASN	2.6
1	A	485	TYR	2.5
1	A	553	TRP	2.5
1	A	388	ILE	2.5
1	A	593	ILE	2.5
1	A	391	THR	2.5
1	A	479	LEU	2.5
1	B	615	ASP	2.4
1	B	677	VAL	2.4
1	A	588	TYR	2.4
1	B	355	PHE	2.4
1	A	552	ASP	2.4
1	A	487	GLN	2.3
1	A	564	LEU	2.3

*Continued on next page...*

*Continued from previous page...*

Mol	Chain	Res	Type	RSRZ
1	A	499	VAL	2.3
1	A	378	MET	2.3
1	B	302	LYS	2.3
1	A	680	VAL	2.3
1	B	676	TRP	2.3
1	A	679	ILE	2.2
1	A	609	GLU	2.2
1	A	667	ARG	2.2
1	A	442	ILE	2.2
1	A	366	TYR	2.2
1	A	369	ILE	2.1
1	B	551	PHE	2.1
1	B	679	ILE	2.1
1	B	479	LEU	2.1
1	A	566	ALA	2.1
1	A	711	TRP	2.1
1	A	582	CYS	2.1
1	A	565	PRO	2.1
1	A	350	THR	2.1
1	B	620	LYS	2.0
1	B	310	VAL	2.0
1	A	393	THR	2.0
1	A	384	VAL	2.0
1	B	353	GLN	2.0

## 6.2 Non-standard residues in protein, DNA, RNA chains [i](#)

There are no non-standard protein/DNA/RNA residues in this entry.

## 6.3 Carbohydrates [i](#)

There are no carbohydrates in this entry.

## 6.4 Ligands [i](#)

In the following table, the Atoms column lists the number of modelled atoms in the group and the number defined in the chemical component dictionary. LLDF column lists the quality of electron density of the group with respect to its neighbouring residues in protein, DNA or RNA chains. The B-factors column lists the minimum, median, 95<sup>th</sup> percentile and maximum values of B factors of atoms in the group. The column labelled 'Q < 0.9' lists the number of atoms with occupancy less than 0.9.

Mol	Type	Chain	Res	Atoms	RSCC	RSR	LLDF	B-factors( $\text{\AA}^2$ )	Q<0.9
5	ACT	A	860	4/4	0.97	0.16	2.55	50,52,56,57	0
4	Q16	A	800	26/26	0.90	0.23	1.04	26,44,56,61	0
4	Q16	B	800	26/26	0.93	0.20	1.04	30,43,52,54	0
2	HEM	A	750	43/43	0.98	0.19	0.74	25,31,39,42	0
2	HEM	B	750	43/43	0.99	0.16	0.72	21,29,38,43	0
3	H4B	B	760	17/17	0.96	0.15	0.22	30,34,37,37	0
3	H4B	A	760	17/17	0.96	0.14	-0.20	34,36,39,39	0
5	ACT	B	860	4/4	0.98	0.09	-0.27	45,46,53,53	0
6	ZN	A	1717	1/1	0.99	0.08	-0.77	35,35,35,35	0

## 6.5 Other polymers [i](#)

There are no such residues in this entry.