



Full wwPDB X-ray Structure Validation Report ⓘ

Feb 1, 2016 – 03:20 PM GMT

PDB ID : 4C48
Title : Crystal structure of AcrB-AcrZ complex
Authors : Du, D.; James, N.; Klimont, E.; Luisi, B.F.
Deposited on : 2013-09-02
Resolution : 3.30 Å(reported)

This is a Full wwPDB X-ray Structure Validation Report for a publicly released PDB entry.
We welcome your comments at validation@mail.wwpdb.org
A user guide is available at
<http://wwpdb.org/validation/2016/XrayValidationReportHelp>
with specific help available everywhere you see the ⓘ symbol.

The following versions of software and data (see [references ⓘ](#)) were used in the production of this report:

MolProbity : 4.02b-467
Mogul : 1.7 (RC4), CSD as536be (2015)
Xtriage (Phenix) : 1.9-1692
EDS : rb-20026688
Percentile statistics : 20151230.v01 (using entries in the PDB archive December 30th 2015)
Refmac : 5.8.0135
CCP4 : 6.5.0
Ideal geometry (proteins) : Engh & Huber (2001)
Ideal geometry (DNA, RNA) : Parkinson et al. (1996)
Validation Pipeline (wwPDB-VP) : trunk26865

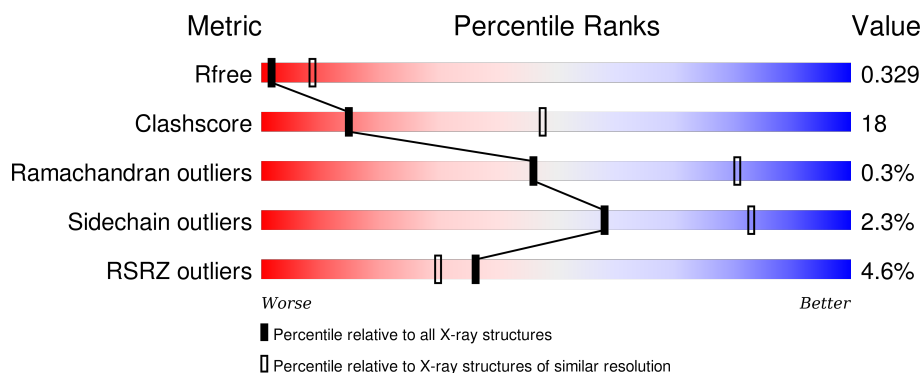
1 Overall quality at a glance

The following experimental techniques were used to determine the structure:

X-RAY DIFFRACTION

The reported resolution of this entry is 3.30 Å.

Percentile scores (ranging between 0-100) for global validation metrics of the entry are shown in the following graphic. The table shows the number of entries on which the scores are based.



Metric	Whole archive (#Entries)	Similar resolution (#Entries, resolution range(Å))
R_{free}	91344	2060 (3.40-3.20)
Clashscore	102246	1058 (3.38-3.22)
Ramachandran outliers	100387	1038 (3.38-3.22)
Sidechain outliers	100360	1037 (3.38-3.22)
RSRZ outliers	91569	2070 (3.40-3.20)

The table below summarises the geometric issues observed across the polymeric chains and their fit to the electron density. The red, orange, yellow and green segments on the lower bar indicate the fraction of residues that contain outliers for ≥ 3 , 2, 1 and 0 types of geometric quality criteria. A grey segment represents the fraction of residues that are not modelled. The numeric value for each fraction is indicated below the corresponding segment, with a dot representing fractions $\leq 5\%$. The upper red bar (where present) indicates the fraction of residues that have poor fit to the electron density. The numeric value is given above the bar.

Mol	Chain	Length	Quality of chain
1	A	1047	<div> <div>3%</div> <div>64%</div> <div>33%</div> <div>..</div> </div>
2	B	169	<div> <div>11%</div> <div>64%</div> <div>25%</div> <div>10%</div> </div>
3	C	49	<div> <div>6%</div> <div>57%</div> <div>37%</div> <div>6%</div> </div>

The following table lists non-polymeric compounds, carbohydrate monomers and non-standard residues in protein, DNA, RNA chains that are outliers for geometric or electron-density-fit criteria:

Mol	Type	Chain	Res	Chirality	Geometry	Clashes	Electron density
4	LMT	A	2043	-	-	-	X
4	LMT	A	2044	-	-	-	X
4	LMT	A	2046	-	-	-	X

2 Entry composition [i](#)

There are 6 unique types of molecules in this entry. The entry contains 9390 atoms, of which 0 are hydrogens and 0 are deuteriums.

In the tables below, the ZeroOcc column contains the number of atoms modelled with zero occupancy, the AltConf column contains the number of residues with at least one atom in alternate conformation and the Trace column contains the number of residues modelled with at most 2 atoms.

- Molecule 1 is a protein called ACRIFLAVINE RESISTANCE PROTEIN B.

Mol	Chain	Residues	Atoms					ZeroOcc	AltConf	Trace
			Total	C	N	O	S			
1	A	1032	7788	5013	1285	1446	44	0	0	0

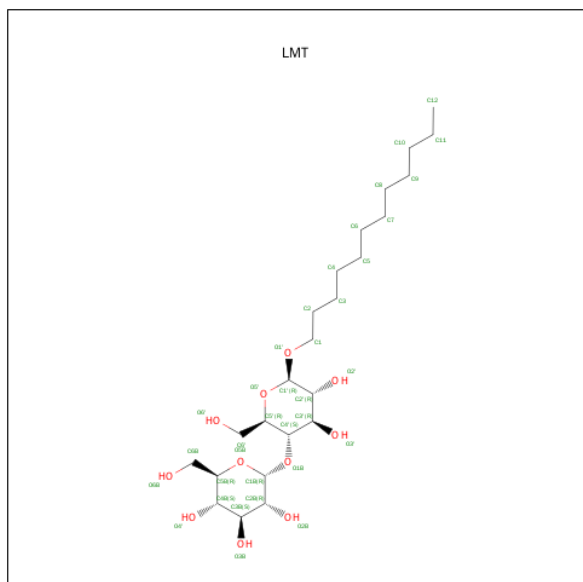
- Molecule 2 is a protein called DARPIN.

Mol	Chain	Residues	Atoms					ZeroOcc	AltConf	Trace
			Total	C	N	O	S			
2	B	152	1145	723	199	222	1	0	0	0

- Molecule 3 is a protein called UNCHARACTERIZED MEMBRANE PROTEIN YBHT.

Mol	Chain	Residues	Atoms					ZeroOcc	AltConf	Trace
			Total	C	N	O	S			
3	C	46	326	219	48	56	3	0	0	0

- Molecule 4 is DODECYL-BETA-D-MALTOSE (three-letter code: LMT) (formula: $C_{24}H_{46}O_{11}$).



Mol	Chain	Residues	Atoms	ZeroOcc	AltConf
4	A	1	Total C 10 10	0	0
4	A	1	Total C 6 6	0	0
4	A	1	Total C 8 8	0	0
4	A	1	Total C 12 12	0	0
4	A	1	Total C O 35 24 11	0	0
4	A	1	Total C 8 8	0	0
4	A	1	Total C 4 4	0	0
4	A	1	Total C 6 6	0	0
4	A	1	Total C 6 6	0	0

- Molecule 5 is NICKEL (II) ION (three-letter code: NI) (formula: Ni).

Mol	Chain	Residues	Atoms	ZeroOcc	AltConf
5	A	1	Total Ni 1 1	0	0

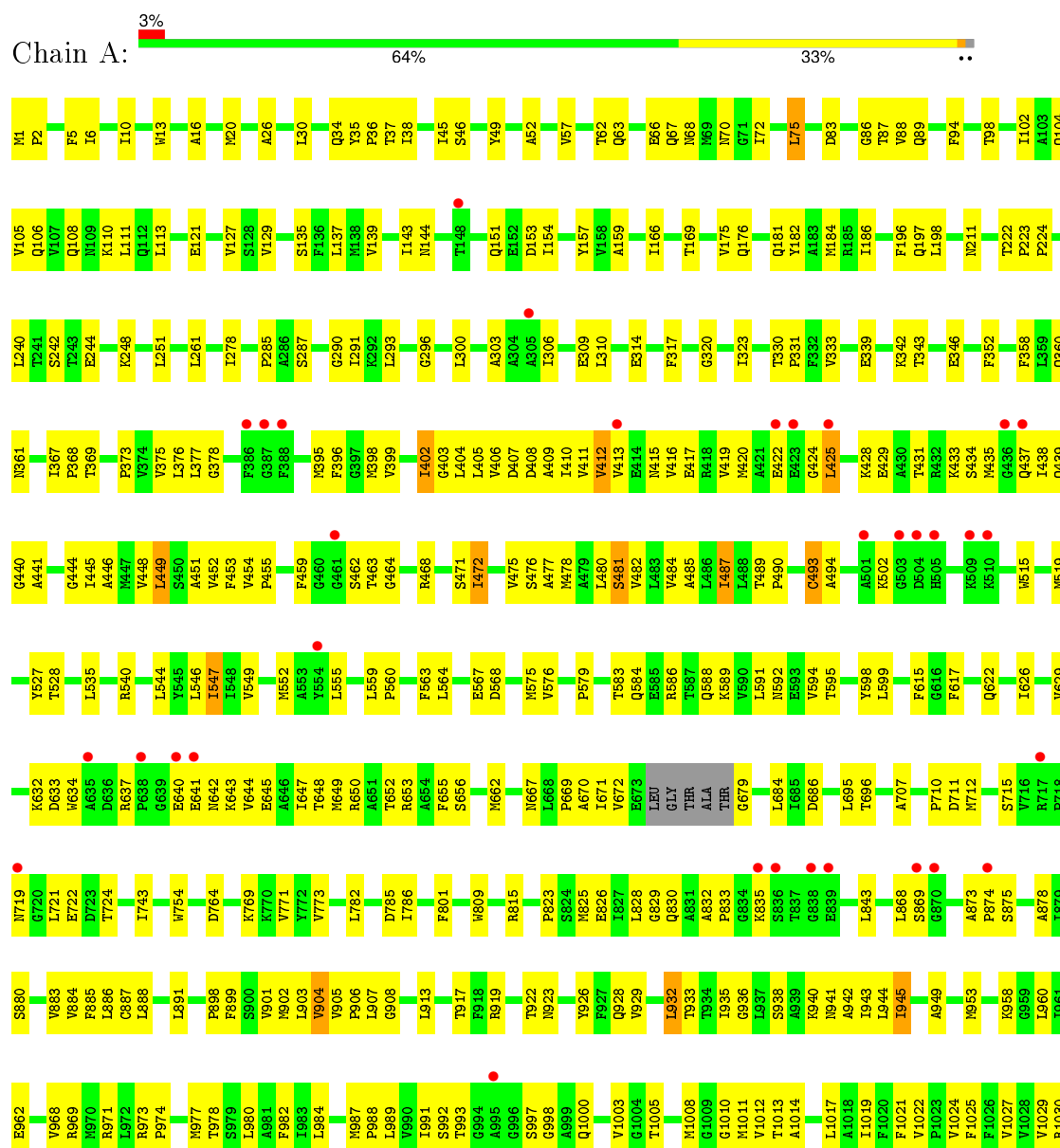
- Molecule 6 is water.

Mol	Chain	Residues	Atoms	ZeroOcc	AltConf
6	A	28	Total O 28 28	0	0
6	B	7	Total O 7 7	0	0

3 Residue-property plots

These plots are drawn for all protein, RNA and DNA chains in the entry. The first graphic for a chain summarises the proportions of errors displayed in the second graphic. The second graphic shows the sequence view annotated by issues in geometry and electron density. Residues are color-coded according to the number of geometric quality criteria for which they contain at least one outlier: green = 0, yellow = 1, orange = 2 and red = 3 or more. A red dot above a residue indicates a poor fit to the electron density ($\text{RSRZ} > 2$). Stretches of 2 or more consecutive residues without any outlier are shown as a green connector. Residues present in the sample, but not in the model, are shown in grey.

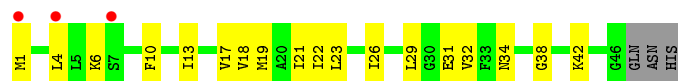
• Molecule 1: ACRIFLAVINE RESISTANCE PROTEIN B



- Molecule 2: DARPIN



- Molecule 3: UNCHARACTERIZED MEMBRANE PROTEIN YBHT



4 Data and refinement statistics

Property	Value	Source
Space group	H 3 2	Depositor
Cell constants a, b, c, α , β , γ	145.01Å 145.01Å 538.34Å 90.00° 90.00° 120.00°	Depositor
Resolution (Å)	29.67 – 3.30 29.66 – 3.30	Depositor EDS
% Data completeness (in resolution range)	99.5 (29.67-3.30) 92.7 (29.66-3.30)	Depositor EDS
R_{merge}	0.13	Depositor
R_{sym}	(Not available)	Depositor
$\langle I/\sigma(I) \rangle$ ¹	2.07 (at 3.31Å)	Xtriage
Refinement program	REFMAC 5.7.0029	Depositor
R, R_{free}	0.281 , 0.322 0.283 , 0.329	Depositor DCC
R_{free} test set	1656 reflections (5.65%)	DCC
Wilson B-factor (Å ²)	81.5	Xtriage
Anisotropy	0.246	Xtriage
Bulk solvent k_{sol} (e/Å ³), B_{sol} (Å ²)	0.26 , 60.8	EDS
Estimated twinning fraction	No twinning to report.	Xtriage
L-test for twinning ²	$\langle L \rangle = 0.46$, $\langle L^2 \rangle = 0.28$	Xtriage
Outliers	0 of 33270 reflections	Xtriage
F_o, F_c correlation	0.86	EDS
Total number of atoms	9390	wwPDB-VP
Average B, all atoms (Å ²)	97.0	wwPDB-VP

Xtriage's analysis on translational NCS is as follows: *The largest off-origin peak in the Patterson function is 2.81% of the height of the origin peak. No significant pseudotranslation is detected.*

¹Intensities estimated from amplitudes.

²Theoretical values of $\langle |L| \rangle$, $\langle L^2 \rangle$ for acentric reflections are 0.5, 0.375 respectively for untwinned datasets, and 0.333, 0.2 for perfectly twinned datasets.

5 Model quality

5.1 Standard geometry

Bond lengths and bond angles in the following residue types are not validated in this section: NI, LMT

The Z score for a bond length (or angle) is the number of standard deviations the observed value is removed from the expected value. A bond length (or angle) with $|Z| > 5$ is considered an outlier worth inspection. RMSZ is the root-mean-square of all Z scores of the bond lengths (or angles).

Mol	Chain	Bond lengths		Bond angles	
		RMSZ	# Z >5	RMSZ	# Z >5
1	A	0.58	0/7936	0.70	1/10780 (0.0%)
2	B	0.44	0/1164	0.59	0/1584
3	C	0.50	0/330	0.63	0/448
All	All	0.56	0/9430	0.68	1/12812 (0.0%)

Chiral center outliers are detected by calculating the chiral volume of a chiral center and verifying if the center is modelled as a planar moiety or with the opposite hand. A planarity outlier is detected by checking planarity of atoms in a peptide group, atoms in a mainchain group or atoms of a sidechain that are expected to be planar.

Mol	Chain	#Chirality outliers	#Planarity outliers
1	A	0	2

There are no bond length outliers.

All (1) bond angle outliers are listed below:

Mol	Chain	Res	Type	Atoms	Z	Observed(°)	Ideal(°)
1	A	449	LEU	CA-CB-CG	5.27	127.41	115.30

There are no chirality outliers.

All (2) planarity outliers are listed below:

Mol	Chain	Res	Type	Group
1	A	222	THR	Mainchain,Peptide

5.2 Too-close contacts

In the following table, the Non-H and H(model) columns list the number of non-hydrogen atoms and hydrogen atoms in the chain respectively. The H(added) column lists the number of hydrogen

atoms added and optimized by MolProbity. The Clashes column lists the number of clashes within the asymmetric unit, whereas Symm-Clashes lists symmetry related clashes.

Mol	Chain	Non-H	H(model)	H(added)	Clashes	Symm-Clashes
1	A	7788	0	7885	278	0
2	B	1145	0	1125	29	0
3	C	326	0	346	23	0
4	A	95	0	137	10	0
5	A	1	0	0	0	0
6	A	28	0	0	1	0
6	B	7	0	0	0	0
All	All	9390	0	9493	333	0

The all-atom clashscore is defined as the number of clashes found per 1000 atoms (including hydrogen atoms). The all-atom clashscore for this structure is 18.

All (333) close contacts within the same asymmetric unit are listed below, sorted by their clash magnitude.

Atom-1	Atom-2	Interatomic distance (Å)	Clash overlap (Å)
3:C:6:LYS:HG3	3:C:10:PHE:CE2	1.51	1.46
3:C:6:LYS:CG	3:C:10:PHE:HE2	1.45	1.28
1:A:575:MET:HE2	1:A:662:MET:CE	1.64	1.24
1:A:575:MET:CE	1:A:662:MET:HE2	1.74	1.16
3:C:6:LYS:CG	3:C:10:PHE:CE2	2.28	1.02
1:A:575:MET:CE	1:A:662:MET:CE	2.37	0.98
2:B:60:LEU:HD21	2:B:94:GLU:HB3	1.48	0.93
4:A:2043:LMT:H2O1	4:A:2043:LMT:H3O2	1.19	0.87
3:C:6:LYS:O	3:C:10:PHE:HD2	1.56	0.87
4:A:2043:LMT:O2B	4:A:2043:LMT:H4'	1.76	0.86
1:A:70:ASN:O	1:A:110:LYS:NZ	2.08	0.86
1:A:960:LEU:HD21	1:A:1030:ARG:HB2	1.57	0.85
1:A:555:LEU:HD22	1:A:913:LEU:HB3	1.62	0.82
3:C:6:LYS:O	3:C:10:PHE:CD2	2.35	0.79
3:C:6:LYS:HG3	3:C:10:PHE:HE2	0.64	0.79
2:B:26:ARG:NH1	2:B:29:GLU:OE1	2.19	0.76
1:A:291:ILE:HD13	1:A:306:ILE:HD13	1.68	0.75
1:A:938:SER:HB3	1:A:1014:ALA:HB1	1.69	0.74
1:A:360:GLN:O	1:A:361:ASN:ND2	2.20	0.73
1:A:901:VAL:HG21	1:A:943:ILE:HG13	1.70	0.72
1:A:575:MET:HE2	1:A:662:MET:HE2	0.81	0.72
1:A:568:ASP:OD1	1:A:634:TRP:NE1	2.23	0.72
2:B:41:ASN:HD21	2:B:72:ASP:H	1.34	0.71
1:A:632:LYS:O	1:A:637:ARG:NH1	2.23	0.71

Continued on next page...

Continued from previous page...

Atom-1	Atom-2	Interatomic distance (Å)	Clash overlap (Å)
1:A:422:GLU:N	1:A:422:GLU:OE1	2.24	0.70
1:A:463:THR:HG21	6:A:2019:HOH:O	1.91	0.69
4:A:2043:LMT:O2B	4:A:2043:LMT:O3'	2.01	0.69
1:A:684:LEU:HD22	1:A:695:LEU:HD11	1.75	0.69
1:A:633:ASP:OD1	1:A:634:TRP:N	2.26	0.69
1:A:137:LEU:HD21	1:A:303:ALA:HB2	1.75	0.69
4:A:2043:LMT:O2B	4:A:2043:LMT:C4'	2.41	0.68
1:A:57:VAL:HG21	1:A:86:GLY:HA2	1.76	0.68
1:A:375:VAL:HG11	1:A:405:LEU:HD22	1.75	0.68
1:A:454:VAL:HG12	1:A:475:VAL:HG21	1.76	0.68
4:A:2043:LMT:O6B	4:A:2043:LMT:H1B	1.93	0.67
1:A:721:LEU:HD13	1:A:815:ARG:HD3	1.77	0.67
2:B:89:HIS:HB2	2:B:119:LEU:HD22	1.77	0.66
1:A:712:MET:SD	1:A:835:LYS:HE2	2.36	0.66
1:A:984:LEU:HA	1:A:987:MET:HG2	1.78	0.65
1:A:885:PHE:HA	1:A:902:MET:HE3	1.79	0.64
1:A:404:LEU:HD11	1:A:449:LEU:HD21	1.79	0.64
1:A:453:PHE:HB3	1:A:932:LEU:HD22	1.79	0.63
1:A:598:TYR:HE2	1:A:629:VAL:HG21	1.61	0.63
1:A:1030:ARG:O	1:A:1034:SER:OG	2.15	0.63
1:A:899:PHE:O	1:A:903:LEU:HD12	1.97	0.63
1:A:424:GLY:HA3	1:A:502:LYS:HB3	1.81	0.63
1:A:6:ILE:O	1:A:428:LYS:NZ	2.32	0.63
1:A:898:PRO:O	1:A:901:VAL:HG12	1.99	0.63
1:A:248:LYS:HA	1:A:261:LEU:HD23	1.80	0.62
1:A:544:LEU:HD12	1:A:547:ILE:HG12	1.80	0.62
1:A:38:ILE:HG22	1:A:462:SER:HB2	1.81	0.62
1:A:546:LEU:O	1:A:549:VAL:HG12	1.99	0.62
1:A:898:PRO:O	1:A:902:MET:HG2	2.00	0.62
1:A:446:ALA:HB2	1:A:482:VAL:HG21	1.82	0.62
1:A:485:ALA:O	1:A:490:PRO:HD3	2.00	0.61
2:B:63:VAL:HG11	2:B:99:LEU:HD11	1.82	0.61
2:B:59:HIS:O	2:B:63:VAL:HG23	2.00	0.61
1:A:563:PHE:O	1:A:564:LEU:HD23	2.00	0.61
1:A:451:ALA:HB1	1:A:883:VAL:HG13	1.82	0.60
1:A:453:PHE:CE1	1:A:475:VAL:HG22	2.36	0.60
1:A:20:MET:HA	1:A:377:LEU:HD11	1.84	0.60
1:A:110:LYS:HA	1:A:113:LEU:HG	1.82	0.60
1:A:375:VAL:CG1	1:A:405:LEU:HD22	2.32	0.60
1:A:402:ILE:O	1:A:406:VAL:HG13	2.00	0.60
1:A:153:ASP:OD1	1:A:182:TYR:OH	2.20	0.59

Continued on next page...

Continued from previous page...

Atom-1	Atom-2	Interatomic distance (Å)	Clash overlap (Å)
1:A:926:TYR:HB3	1:A:1003:VAL:HG23	1.82	0.59
1:A:884:VAL:HG12	1:A:902:MET:CE	2.32	0.59
2:B:61:GLU:O	2:B:65:VAL:HG23	2.03	0.59
1:A:104:GLN:O	1:A:108:GLN:HG2	2.02	0.59
1:A:139:VAL:HG22	1:A:290:GLY:HA2	1.83	0.59
1:A:102:ILE:HA	1:A:105:VAL:HG22	1.85	0.58
1:A:903:LEU:O	1:A:906:PRO:HD2	2.02	0.58
2:B:82:THR:HG22	2:B:84:LEU:H	1.69	0.57
1:A:901:VAL:HG23	1:A:942:ALA:HB3	1.86	0.57
1:A:984:LEU:HD23	1:A:987:MET:HG3	1.85	0.57
1:A:407:ASP:HA	1:A:410:ILE:HG12	1.86	0.57
1:A:637:ARG:HB2	1:A:642:ASN:HB3	1.85	0.57
1:A:35:TYR:HE2	1:A:672:VAL:H	1.53	0.57
4:A:2043:LMT:O6B	4:A:2043:LMT:C1B	2.53	0.57
1:A:1021:PHE:HB3	1:A:1025:PHE:CZ	2.39	0.57
1:A:454:VAL:N	1:A:455:PRO:HD2	2.20	0.57
2:B:109:LYS:HD2	2:B:113:GLY:HA2	1.85	0.57
1:A:169:THR:OG1	1:A:309:GLU:OE2	2.22	0.57
1:A:644:VAL:O	1:A:648:THR:HG23	2.05	0.57
1:A:330:THR:OG1	1:A:331:PRO:HD3	2.05	0.57
1:A:94:PHE:HB3	1:A:98:THR:HG21	1.87	0.56
1:A:137:LEU:HD13	1:A:293:LEU:HD21	1.88	0.56
1:A:944:LEU:HD12	1:A:971:ARG:HH21	1.71	0.56
1:A:110:LYS:HB2	1:A:113:LEU:HD12	1.88	0.56
1:A:973:ARG:NH1	1:A:977:MET:SD	2.79	0.56
1:A:884:VAL:HG12	1:A:902:MET:HE1	1.86	0.56
1:A:434:SER:HA	1:A:437:GLN:OE1	2.05	0.56
1:A:339:GLU:O	1:A:343:THR:HG23	2.05	0.56
1:A:448:VAL:CG2	1:A:884:VAL:HG13	2.36	0.55
1:A:358:PHE:CD2	1:A:977:MET:HG2	2.41	0.55
1:A:444:GLY:HA3	1:A:891:LEU:HD12	1.89	0.55
1:A:425:LEU:HD12	1:A:429:GLU:HB3	1.87	0.55
1:A:36:PRO:O	1:A:38:ILE:HG13	2.07	0.55
1:A:721:LEU:HD13	1:A:815:ARG:CD	2.36	0.55
1:A:396:PHE:O	1:A:399:VAL:HG12	2.07	0.55
1:A:83:ASP:OD1	1:A:87:THR:OG1	2.25	0.54
1:A:310:LEU:HD21	1:A:323:ILE:HD12	1.89	0.54
1:A:37:THR:HG21	1:A:296:GLY:HA2	1.89	0.54
4:A:2043:LMT:O6'	4:A:2043:LMT:H2B	2.07	0.54
1:A:415:ASN:ND2	1:A:437:GLN:HE21	2.05	0.54
1:A:653:ARG:O	1:A:656:SER:OG	2.25	0.54

Continued on next page...

Continued from previous page...

Atom-1	Atom-2	Interatomic distance (Å)	Clash overlap (Å)
1:A:707:ALA:O	1:A:710:PRO:HD3	2.08	0.54
1:A:974:PRO:O	1:A:978:THR:HG23	2.07	0.54
1:A:477:ALA:O	1:A:481:SER:HB3	2.07	0.54
1:A:719:ASN:HB2	1:A:828:LEU:HD13	1.90	0.54
3:C:6:LYS:CD	3:C:10:PHE:HE2	2.18	0.54
1:A:1021:PHE:O	1:A:1024:VAL:HG22	2.08	0.54
1:A:989:LEU:HG	1:A:1000:GLN:HB2	1.90	0.53
1:A:476:SER:O	1:A:480:LEU:HG	2.08	0.53
1:A:2:PRO:O	1:A:6:ILE:HD12	2.07	0.53
1:A:412:VAL:O	1:A:416:VAL:HG23	2.09	0.53
3:C:13:ILE:O	3:C:17:VAL:HG23	2.08	0.53
1:A:453:PHE:HE1	1:A:475:VAL:HG22	1.73	0.53
1:A:997:SER:HA	1:A:1000:GLN:HE22	1.74	0.53
1:A:62:THR:O	1:A:66:GLU:HG3	2.07	0.53
1:A:588:GLN:O	1:A:592:ASN:ND2	2.41	0.53
1:A:449:LEU:HD13	1:A:936:GLY:HA3	1.90	0.53
1:A:20:MET:HA	1:A:377:LEU:CD1	2.38	0.53
1:A:971:ARG:NH1	1:A:974:PRO:HB2	2.24	0.53
1:A:144:ASN:HA	1:A:320:GLY:O	2.08	0.53
2:B:28:ASP:O	2:B:32:ILE:HG13	2.09	0.53
1:A:919:ARG:HH11	1:A:1005:THR:HG21	1.74	0.53
1:A:885:PHE:HA	1:A:902:MET:CE	2.39	0.53
1:A:540:ARG:HD2	3:C:38:GLY:HA3	1.90	0.53
2:B:40:VAL:HG21	2:B:69:ASN:OD1	2.09	0.52
1:A:431:THR:O	1:A:435:MET:HG2	2.09	0.52
1:A:10:ILE:O	1:A:13:TRP:N	2.42	0.52
1:A:932:LEU:O	1:A:935:ILE:HG13	2.09	0.52
1:A:375:VAL:HG13	1:A:480:LEU:HD12	1.92	0.52
1:A:559:LEU:HD23	1:A:923:ASN:HB2	1.92	0.52
1:A:560:PRO:HG2	1:A:922:THR:HG22	1.92	0.52
4:A:2043:LMT:O2'	4:A:2043:LMT:H11	2.10	0.52
1:A:528:THR:HG21	1:A:969:ARG:HD3	1.92	0.52
3:C:6:LYS:CD	3:C:10:PHE:CE2	2.91	0.51
1:A:34:GLN:HB3	1:A:333:VAL:HG11	1.93	0.51
1:A:712:MET:HG2	1:A:843:LEU:HD22	1.92	0.51
1:A:568:ASP:OD2	1:A:644:VAL:HG23	2.10	0.51
1:A:982:PHE:CD2	1:A:1011:MET:HG3	2.46	0.51
1:A:111:LEU:HD12	1:A:129:VAL:HG23	1.92	0.51
1:A:1013:THR:O	1:A:1017:LEU:HB3	2.11	0.51
1:A:352:PHE:HD1	1:A:369:THR:HG21	1.75	0.51
1:A:679:GLY:HA2	1:A:830:GLN:HB3	1.91	0.51

Continued on next page...

Continued from previous page...

Atom-1	Atom-2	Interatomic distance (Å)	Clash overlap (Å)
1:A:398:MET:O	1:A:402:ILE:HG23	2.10	0.51
1:A:949:ALA:O	1:A:953:MET:HG2	2.11	0.51
1:A:615:PHE:CD1	1:A:615:PHE:O	2.63	0.51
1:A:83:ASP:HA	1:A:815:ARG:HA	1.93	0.51
1:A:26:ALA:O	1:A:30:LEU:HB2	2.11	0.51
1:A:377:LEU:HD12	1:A:378:GLY:N	2.26	0.50
1:A:903:LEU:HD22	1:A:1025:PHE:CD1	2.46	0.50
1:A:413:VAL:HA	1:A:493:CYS:SG	2.52	0.50
1:A:868:LEU:O	1:A:869:SER:OG	2.26	0.50
1:A:410:ILE:HD11	1:A:978:THR:HA	1.92	0.50
1:A:437:GLN:HG2	1:A:438:ILE:HG23	1.93	0.50
1:A:464:GLY:O	1:A:468:ARG:HG2	2.11	0.50
1:A:102:ILE:O	1:A:106:GLN:HG3	2.12	0.50
1:A:417:GLU:O	1:A:420:MET:HG2	2.11	0.50
1:A:449:LEU:O	1:A:452:VAL:HG22	2.12	0.50
1:A:2:PRO:HB2	1:A:435:MET:HG3	1.93	0.50
1:A:143:ILE:HD13	1:A:285:PRO:O	2.12	0.50
1:A:595:THR:HG22	1:A:599:LEU:HD12	1.93	0.50
1:A:584:GLN:HB2	1:A:622:GLN:HG2	1.93	0.50
1:A:431:THR:HG21	1:A:494:ALA:HB2	1.94	0.49
1:A:143:ILE:HD12	1:A:144:ASN:H	1.76	0.49
3:C:18:VAL:HA	3:C:21:ILE:HD12	1.94	0.49
1:A:1027:VAL:O	1:A:1031:ARG:N	2.45	0.49
1:A:904:VAL:HG11	1:A:1022:VAL:HG22	1.93	0.49
1:A:905:VAL:HB	1:A:906:PRO:HD3	1.92	0.49
2:B:78:THR:O	2:B:79:LEU:HB2	2.12	0.49
1:A:449:LEU:CD1	1:A:936:GLY:HA3	2.42	0.49
1:A:715:SER:O	1:A:829:GLY:HA2	2.13	0.49
2:B:89:HIS:HB2	2:B:119:LEU:CD2	2.43	0.49
1:A:409:ALA:O	1:A:413:VAL:HG13	2.13	0.49
1:A:527:TYR:OH	1:A:1019:ILE:O	2.30	0.49
1:A:63:GLN:O	1:A:67:GLN:HG3	2.13	0.49
1:A:641:GLU:O	1:A:650:ARG:NH2	2.38	0.49
1:A:880:SER:O	1:A:884:VAL:HG23	2.12	0.49
4:A:2043:LMT:O3B	4:A:2043:LMT:H6'2	2.13	0.49
1:A:913:LEU:O	1:A:917:THR:HG23	2.13	0.49
1:A:45:ILE:HG12	1:A:129:VAL:HG22	1.95	0.49
1:A:428:LYS:HZ2	1:A:494:ALA:HB1	1.78	0.48
1:A:369:THR:O	1:A:373:PRO:HD2	2.14	0.48
1:A:764:ASP:OD2	1:A:769:LYS:NZ	2.38	0.48
1:A:184:MET:HB3	1:A:771:VAL:HG22	1.96	0.48

Continued on next page...

Continued from previous page...

Atom-1	Atom-2	Interatomic distance (Å)	Clash overlap (Å)
1:A:438:ILE:O	1:A:441:ALA:N	2.41	0.48
1:A:719:ASN:ND2	1:A:826:GLU:OE2	2.47	0.48
1:A:157:TYR:HH	1:A:317:PHE:HD1	1.61	0.48
1:A:686:ASP:HB2	1:A:695:LEU:HD22	1.95	0.48
1:A:645:GLU:O	1:A:649:MET:HG2	2.13	0.48
1:A:211:ASN:HA	1:A:240:LEU:HD13	1.96	0.48
1:A:940:LYS:HE3	1:A:941:ASN:OD1	2.13	0.48
1:A:49:TYR:CD2	1:A:52:ALA:HB2	2.49	0.47
1:A:445:ILE:HG22	1:A:943:ILE:HD13	1.96	0.47
2:B:34:MET:SD	2:B:40:VAL:HG22	2.54	0.47
1:A:449:LEU:HD23	1:A:478:MET:SD	2.55	0.47
1:A:901:VAL:HG23	1:A:942:ALA:CB	2.44	0.47
2:B:63:VAL:HG11	2:B:99:LEU:CD1	2.45	0.47
1:A:809:TRP:CE2	2:B:46:VAL:HG23	2.50	0.47
2:B:56:TYR:HD1	2:B:57:TRP:CD1	2.32	0.47
1:A:314:GLU:N	1:A:314:GLU:OE1	2.47	0.47
1:A:448:VAL:O	1:A:452:VAL:HG13	2.14	0.47
1:A:111:LEU:HD11	1:A:127:VAL:HG12	1.97	0.47
1:A:960:LEU:HD21	1:A:1030:ARG:CB	2.39	0.47
1:A:1:MET:HB3	1:A:2:PRO:HD3	1.97	0.46
1:A:72:ILE:HG22	1:A:106:GLN:HB3	1.97	0.46
1:A:242:SER:OG	1:A:244:GLU:OE1	2.33	0.46
1:A:198:LEU:HD13	1:A:251:LEU:HD13	1.96	0.46
1:A:643:LYS:O	1:A:647:ILE:HG13	2.15	0.46
1:A:412:VAL:HB	1:A:438:ILE:HD11	1.95	0.46
1:A:34:GLN:HB3	1:A:333:VAL:CG1	2.45	0.46
1:A:358:PHE:CG	1:A:977:MET:HG2	2.50	0.46
1:A:35:TYR:OH	1:A:670:ALA:O	2.24	0.46
1:A:151:GLN:HE22	1:A:278:ILE:HG23	1.80	0.46
1:A:415:ASN:O	1:A:419:VAL:HG23	2.16	0.46
1:A:468:ARG:O	1:A:472:ILE:HG23	2.15	0.46
2:B:113:GLY:O	2:B:143:ASP:HA	2.16	0.46
1:A:154:ILE:HG22	1:A:287:SER:HB3	1.98	0.46
1:A:480:LEU:O	1:A:484:VAL:HG13	2.16	0.46
1:A:135:SER:OG	1:A:672:VAL:O	2.17	0.46
1:A:873:ALA:N	1:A:874:PRO:HD2	2.30	0.45
1:A:399:VAL:O	1:A:402:ILE:HG13	2.16	0.45
1:A:782:LEU:O	1:A:785:ASP:HB2	2.15	0.45
1:A:711:ASP:N	1:A:711:ASP:OD1	2.49	0.45
1:A:72:ILE:HG13	1:A:75:LEU:HD22	1.97	0.45
1:A:471:SER:O	1:A:475:VAL:HG23	2.16	0.45

Continued on next page...

Continued from previous page...

Atom-1	Atom-2	Interatomic distance (Å)	Clash overlap (Å)
1:A:586:ARG:O	1:A:589:LYS:HB3	2.16	0.45
1:A:962:GLU:N	1:A:962:GLU:OE1	2.44	0.45
1:A:992:SER:CB	1:A:1000:GLN:HE21	2.30	0.45
1:A:722:GLU:O	1:A:724:THR:HG23	2.17	0.45
1:A:549:VAL:O	1:A:552:MET:HB3	2.16	0.45
1:A:367:ILE:HB	1:A:368:PRO:HD3	1.97	0.45
1:A:440:GLY:O	1:A:891:LEU:HD13	2.17	0.45
1:A:137:LEU:CD2	1:A:303:ALA:HB2	2.44	0.45
1:A:696:THR:HA	1:A:825:MET:HE1	1.98	0.45
1:A:567:GLU:HG2	1:A:998:GLY:HA3	1.99	0.45
1:A:540:ARG:HD2	3:C:38:GLY:CA	2.48	0.44
1:A:594:VAL:HG13	1:A:655:PHE:CZ	2.52	0.44
1:A:888:LEU:HD13	1:A:901:VAL:HG11	1.99	0.44
2:B:30:VAL:O	2:B:34:MET:HG2	2.17	0.44
1:A:402:ILE:HG13	1:A:403:GLY:N	2.32	0.44
1:A:754:TRP:CZ2	1:A:786:ILE:HD13	2.52	0.44
1:A:373:PRO:O	1:A:377:LEU:HG	2.17	0.44
2:B:51:LEU:HD23	2:B:83:PRO:HG2	1.99	0.44
1:A:411:VAL:O	1:A:415:ASN:HB2	2.17	0.44
2:B:48:TRP:NE1	2:B:77:ASP:OD2	2.51	0.44
1:A:433:LYS:O	1:A:437:GLN:OE1	2.36	0.44
1:A:980:LEU:HD21	3:C:19:MET:HB2	1.99	0.43
2:B:67:LEU:HD22	2:B:73:VAL:HG22	2.00	0.43
1:A:176:GLN:N	1:A:290:GLY:O	2.50	0.43
1:A:1032:ARG:NH2	3:C:42:LYS:O	2.51	0.43
1:A:352:PHE:CD1	1:A:369:THR:HG21	2.52	0.43
1:A:583:THR:HG22	1:A:586:ARG:HD3	2.00	0.43
3:C:29:LEU:HA	3:C:32:VAL:HG22	1.99	0.43
1:A:110:LYS:HE2	1:A:110:LYS:HB3	1.52	0.43
1:A:888:LEU:HD12	1:A:902:MET:HE1	1.99	0.43
1:A:644:VAL:HG11	1:A:667:ASN:ND2	2.33	0.43
2:B:25:GLY:O	2:B:62:ILE:HD11	2.19	0.43
1:A:721:LEU:CD1	1:A:815:ARG:HD3	2.48	0.43
4:A:2043:LMT:O2B	4:A:2043:LMT:C3'	2.66	0.43
1:A:1024:VAL:HA	1:A:1027:VAL:HG22	2.00	0.43
1:A:997:SER:HA	1:A:1000:GLN:NE2	2.33	0.43
1:A:988:PRO:O	1:A:991:ILE:HG13	2.18	0.43
1:A:1025:PHE:O	1:A:1029:VAL:HG23	2.19	0.43
2:B:52:HIS:CE1	2:B:83:PRO:HD3	2.54	0.43
1:A:342:LYS:O	1:A:346:GLU:HG2	2.19	0.43
1:A:575:MET:HE1	1:A:662:MET:CE	2.39	0.43

Continued on next page...

Continued from previous page...

Atom-1	Atom-2	Interatomic distance (Å)	Clash overlap (Å)
1:A:407:ASP:OD1	1:A:408:ASP:N	2.52	0.43
1:A:459:PHE:O	1:A:464:GLY:HA3	2.19	0.42
1:A:809:TRP:CD2	2:B:46:VAL:HG23	2.54	0.42
3:C:31:GLU:O	3:C:34:ASN:HB2	2.19	0.42
1:A:669:PRO:O	1:A:671:ILE:N	2.52	0.42
1:A:535:LEU:HA	1:A:535:LEU:HD12	1.83	0.42
1:A:559:LEU:HD12	1:A:560:PRO:HD2	2.01	0.42
3:C:6:LYS:CG	3:C:10:PHE:CD2	2.97	0.42
1:A:16:ALA:O	1:A:20:MET:HG3	2.19	0.42
1:A:102:ILE:O	1:A:105:VAL:HG22	2.18	0.42
1:A:904:VAL:HA	1:A:907:LEU:HG	2.01	0.42
1:A:576:VAL:HG11	1:A:591:LEU:HD12	2.00	0.42
1:A:875:SER:O	1:A:878:ALA:HB3	2.19	0.42
1:A:422:GLU:O	1:A:502:LYS:HB2	2.19	0.42
2:B:51:LEU:HD11	2:B:63:VAL:HG13	2.00	0.42
3:C:1:MET:O	3:C:4:LEU:HB2	2.19	0.42
3:C:6:LYS:HG2	3:C:10:PHE:CE2	2.41	0.42
1:A:686:ASP:HB3	1:A:823:PRO:HB2	2.01	0.42
1:A:1019:ILE:HD11	3:C:26:ILE:HG21	2.01	0.42
3:C:6:LYS:HG3	3:C:10:PHE:CD2	2.33	0.42
1:A:928:GLN:O	1:A:932:LEU:HD12	2.19	0.42
1:A:832:ALA:HB1	1:A:833:PRO:HD2	2.02	0.42
1:A:449:LEU:HG	1:A:453:PHE:CE2	2.54	0.42
1:A:376:LEU:HD12	1:A:377:LEU:N	2.35	0.42
1:A:1008:MET:HB2	1:A:1008:MET:HE3	1.83	0.42
1:A:929:VAL:O	1:A:933:THR:HG23	2.20	0.41
1:A:454:VAL:N	1:A:455:PRO:CD	2.83	0.41
1:A:395:MET:O	1:A:398:MET:HG2	2.20	0.41
2:B:143:ASP:OD1	2:B:146:GLY:N	2.53	0.41
1:A:958:LYS:HE3	1:A:962:GLU:HG2	2.02	0.41
1:A:515:TRP:NE1	1:A:519:MET:SD	2.82	0.41
1:A:617:PHE:HD2	1:A:626:ILE:HD11	1.84	0.41
1:A:186:ILE:HB	1:A:773:VAL:HG23	2.02	0.41
1:A:743:ILE:HD12	1:A:743:ILE:H	1.85	0.41
1:A:438:ILE:O	1:A:439:GLN:C	2.59	0.41
1:A:166:ILE:HG22	1:A:175:VAL:HG21	2.02	0.41
3:C:19:MET:O	3:C:22:ILE:HG13	2.20	0.41
1:A:908:GLY:O	1:A:1010:GLY:HA2	2.20	0.41
2:B:109:LYS:HG2	2:B:110:ASP:O	2.20	0.41
1:A:987:MET:HB2	1:A:988:PRO:HD3	2.01	0.41
1:A:992:SER:HB3	1:A:1000:GLN:HE21	1.86	0.41

Continued on next page...

Continued from previous page...

Atom-1	Atom-2	Interatomic distance (Å)	Clash overlap (Å)
3:C:23:LEU:HD23	3:C:26:ILE:HD11	2.02	0.41
1:A:886:LEU:HD12	1:A:887:CYS:N	2.36	0.41
1:A:159:ALA:HB1	1:A:181:GLN:HB2	2.03	0.41
1:A:984:LEU:HA	1:A:987:MET:CG	2.47	0.41
1:A:1012:VAL:HG23	1:A:1013:THR:N	2.36	0.41
1:A:1017:LEU:O	1:A:1021:PHE:HD2	2.04	0.41
1:A:330:THR:O	1:A:333:VAL:N	2.53	0.41
1:A:88:VAL:HG12	1:A:89:GLN:N	2.36	0.41
1:A:448:VAL:HG11	1:A:888:LEU:HD21	2.01	0.41
1:A:403:GLY:O	1:A:406:VAL:HG22	2.20	0.41
1:A:415:ASN:ND2	1:A:437:GLN:NE2	2.69	0.41
1:A:649:MET:O	1:A:652:THR:OG1	2.26	0.41
1:A:49:TYR:CE1	1:A:121:GLU:HB2	2.56	0.41
1:A:5:PHE:CD1	1:A:487:ILE:HG23	2.56	0.41
1:A:300:LEU:O	1:A:300:LEU:HD23	2.21	0.41
1:A:453:PHE:CD1	1:A:475:VAL:HG22	2.57	0.40
1:A:945:ILE:HD13	1:A:968:VAL:HG23	2.02	0.40
2:B:128:ILE:O	2:B:131:VAL:HG12	2.21	0.40
1:A:110:LYS:O	1:A:113:LEU:HB2	2.21	0.40
1:A:166:ILE:HA	1:A:309:GLU:HG2	2.03	0.40
1:A:407:ASP:O	1:A:411:VAL:HG22	2.20	0.40
1:A:196:PHE:O	1:A:197:GLN:HB2	2.22	0.40

There are no symmetry-related clashes.

5.3 Torsion angles [i](#)

5.3.1 Protein backbone [i](#)

In the following table, the Percentiles column shows the percent Ramachandran outliers of the chain as a percentile score with respect to all X-ray entries followed by that with respect to entries of similar resolution.

The Analysed column shows the number of residues for which the backbone conformation was analysed, and the total number of residues.

Mol	Chain	Analysed	Favoured	Allowed	Outliers	Percentiles	
1	A	1028/1047 (98%)	959 (93%)	66 (6%)	3 (0%)	46	81
2	B	150/169 (89%)	143 (95%)	6 (4%)	1 (1%)	26	66
3	C	44/49 (90%)	43 (98%)	1 (2%)	0	100	100

Continued on next page...

Continued from previous page...

Mol	Chain	Analysed	Favoured	Allowed	Outliers	Percentiles
All	All	1222/1265 (97%)	1145 (94%)	73 (6%)	4 (0%)	46 81

All (4) Ramachandran outliers are listed below:

Mol	Chain	Res	Type
1	A	223	PRO
1	A	224	PRO
2	B	139	VAL
1	A	579	PRO

5.3.2 Protein sidechains ⓘ

In the following table, the Percentiles column shows the percent sidechain outliers of the chain as a percentile score with respect to all X-ray entries followed by that with respect to entries of similar resolution.

The Analysed column shows the number of residues for which the sidechain conformation was analysed, and the total number of residues.

Mol	Chain	Analysed	Rotameric	Outliers	Percentiles
1	A	823/853 (96%)	804 (98%)	19 (2%)	58 83
2	B	116/132 (88%)	113 (97%)	3 (3%)	54 81
3	C	34/41 (83%)	34 (100%)	0	100 100
All	All	973/1026 (95%)	951 (98%)	22 (2%)	58 83

All (22) residues with a non-rotameric sidechain are listed below:

Mol	Chain	Res	Type
1	A	46	SER
1	A	68	ASN
1	A	75	LEU
1	A	402	ILE
1	A	412	VAL
1	A	425	LEU
1	A	472	ILE
1	A	481	SER
1	A	487	ILE
1	A	489	THR
1	A	493	CYS
1	A	547	ILE

Continued on next page...

Continued from previous page...

Mol	Chain	Res	Type
1	A	640	GLU
1	A	801	PHE
1	A	904	VAL
1	A	932	LEU
1	A	945	ILE
1	A	993	THR
1	A	1034	SER
2	B	60	LEU
2	B	119	LEU
2	B	133	LEU

Some sidechains can be flipped to improve hydrogen bonding and reduce clashes. All (6) such sidechains are listed below:

Mol	Chain	Res	Type
1	A	360	GLN
1	A	361	ASN
1	A	415	ASN
1	A	517	ASN
1	A	592	ASN
2	B	41	ASN

5.3.3 RNA [i](#)

There are no RNA molecules in this entry.

5.4 Non-standard residues in protein, DNA, RNA chains [i](#)

There are no non-standard protein/DNA/RNA residues in this entry.

5.5 Carbohydrates [i](#)

There are no carbohydrates in this entry.

5.6 Ligand geometry [i](#)

Of 10 ligands modelled in this entry, 1 is monoatomic - leaving 9 for Mogul analysis.

In the following table, the Counts columns list the number of bonds (or angles) for which Mogul statistics could be retrieved, the number of bonds (or angles) that are observed in the model and

the number of bonds (or angles) that are defined in the chemical component dictionary. The Link column lists molecule types, if any, to which the group is linked. The Z score for a bond length (or angle) is the number of standard deviations the observed value is removed from the expected value. A bond length (or angle) with $|Z| > 2$ is considered an outlier worth inspection. RMSZ is the root-mean-square of all Z scores of the bond lengths (or angles).

Mol	Type	Chain	Res	Link	Bond lengths			Bond angles		
					Counts	RMSZ	$\# Z > 2$	Counts	RMSZ	$\# Z > 2$
4	LMT	A	2038	-	9,9,36	0.27	0	8,8,47	0.48	0
4	LMT	A	2039	-	5,5,36	0.25	0	4,4,47	0.42	0
4	LMT	A	2041	-	7,7,36	0.24	0	6,6,47	0.49	0
4	LMT	A	2042	-	11,11,36	0.21	0	10,10,47	0.61	0
4	LMT	A	2043	-	36,36,36	0.44	0	47,47,47	0.89	1 (2%)
4	LMT	A	2044	-	7,7,36	0.30	0	6,6,47	0.44	0
4	LMT	A	2045	-	3,3,36	0.49	0	2,2,47	0.65	0
4	LMT	A	2046	-	5,5,36	0.30	0	4,4,47	0.29	0
4	LMT	A	2047	-	5,5,36	0.31	0	4,4,47	0.28	0

In the following table, the Chirals column lists the number of chiral outliers, the number of chiral centers analysed, the number of these observed in the model and the number defined in the chemical component dictionary. Similar counts are reported in the Torsion and Rings columns. '-' means no outliers of that kind were identified.

Mol	Type	Chain	Res	Link	Chirals	Torsions	Rings
4	LMT	A	2038	-	-	0/7/7/61	0/0/0/2
4	LMT	A	2039	-	-	0/3/3/61	0/0/0/2
4	LMT	A	2041	-	-	0/5/5/61	0/0/0/2
4	LMT	A	2042	-	-	0/9/9/61	0/0/0/2
4	LMT	A	2043	-	-	0/21/61/61	0/2/2/2
4	LMT	A	2044	-	-	0/5/5/61	0/0/0/2
4	LMT	A	2045	-	-	0/1/1/61	0/0/0/2
4	LMT	A	2046	-	-	0/3/3/61	0/0/0/2
4	LMT	A	2047	-	-	0/3/3/61	0/0/0/2

There are no bond length outliers.

All (1) bond angle outliers are listed below:

Mol	Chain	Res	Type	Atoms	Z	Observed(°)	Ideal(°)
4	A	2043	LMT	O5'-C5'-C4'	2.29	114.59	109.75

There are no chirality outliers.

There are no torsion outliers.

There are no ring outliers.

1 monomer is involved in 10 short contacts:

Mol	Chain	Res	Type	Clashes	Symm-Clashes
4	A	2043	LMT	10	0

5.7 Other polymers [i](#)

There are no such residues in this entry.

5.8 Polymer linkage issues [i](#)

There are no chain breaks in this entry.

6 Fit of model and data

6.1 Protein, DNA and RNA chains

In the following table, the column labelled ‘#RSRZ> 2’ contains the number (and percentage) of RSRZ outliers, followed by percent RSRZ outliers for the chain as percentile scores relative to all X-ray entries and entries of similar resolution. The OWAB column contains the minimum, median, 95th percentile and maximum values of the occupancy-weighted average B-factor per residue. The column labelled ‘Q< 0.9’ lists the number of (and percentage) of residues with an average occupancy less than 0.9.

Mol	Chain	Analysed	<RSRZ>	#RSRZ>2	OWAB(Å ²)	Q<0.9
1	A	1032/1047 (98%)	-0.02	35 (3%) 49 42	41, 97, 120, 120	0
2	B	152/169 (89%)	0.56	19 (12%) 5 4	92, 119, 120, 120	0
3	C	46/49 (93%)	-0.03	3 (6%) 22 18	83, 118, 120, 120	0
All	All	1230/1265 (97%)	0.05	57 (4%) 36 30	41, 104, 120, 120	0

All (57) RSRZ outliers are listed below:

Mol	Chain	Res	Type	RSRZ
1	A	836	SER	5.6
2	B	35	ALA	5.5
2	B	76	TYR	4.6
1	A	870	GLY	4.3
2	B	77	ASP	4.0
1	A	869	SER	4.0
1	A	425	LEU	3.8
1	A	386	PHE	3.8
1	A	874	PRO	3.6
1	A	388	PHE	3.5
1	A	387	GLY	3.5
2	B	36	ASN	3.5
1	A	422	GLU	3.4
1	A	835	LYS	3.3
2	B	84	LEU	3.3
1	A	839	GLU	3.3
2	B	80	GLY	3.3
2	B	103	GLY	3.2
1	A	501	ALA	3.1
2	B	102	ASN	3.0
3	C	4	LEU	3.0
1	A	305	ALA	3.0
1	A	1034	SER	2.9

Continued on next page...

Continued from previous page...

Mol	Chain	Res	Type	RSRZ
2	B	78	THR	2.9
1	A	509	LYS	2.8
1	A	503	GLY	2.8
2	B	162	ALA	2.7
1	A	505	HIS	2.7
2	B	141	ALA	2.7
1	A	504	ASP	2.7
1	A	436	GLY	2.6
1	A	461	GLY	2.6
1	A	554	TYR	2.6
1	A	1035	ARG	2.5
3	C	1	MET	2.5
1	A	635	ALA	2.5
2	B	96	VAL	2.5
1	A	510	LYS	2.5
1	A	838	GLY	2.4
1	A	638	PRO	2.4
2	B	150	PHE	2.4
1	A	640	GLU	2.4
1	A	717	ARG	2.4
1	A	413	VAL	2.3
2	B	157	GLY	2.3
2	B	109	LYS	2.3
1	A	641	GLU	2.3
2	B	158	ASN	2.3
1	A	148	THR	2.2
1	A	423	GLU	2.1
2	B	107	ASN	2.1
1	A	437	GLN	2.1
3	C	7	SER	2.1
1	A	719	ASN	2.1
2	B	140	ASN	2.1
2	B	26	ARG	2.0
1	A	995	ALA	2.0

6.2 Non-standard residues in protein, DNA, RNA chains ⓘ

There are no non-standard protein/DNA/RNA residues in this entry.

6.3 Carbohydrates [i](#)

There are no carbohydrates in this entry.

6.4 Ligands [i](#)

In the following table, the Atoms column lists the number of modelled atoms in the group and the number defined in the chemical component dictionary. LLDF column lists the quality of electron density of the group with respect to its neighbouring residues in protein, DNA or RNA chains. The B-factors column lists the minimum, median, 95th percentile and maximum values of B factors of atoms in the group. The column labelled 'Q< 0.9' lists the number of atoms with occupancy less than 0.9.

Mol	Type	Chain	Res	Atoms	RSCC	RSR	LLDF	B-factors(\AA^2)	Q<0.9
4	LMT	A	2044	8/35	0.76	0.43	4.94	88,95,99,100	0
4	LMT	A	2046	6/35	0.71	0.45	2.56	97,105,113,114	0
4	LMT	A	2043	35/35	0.66	0.48	2.19	68,89,98,100	35
4	LMT	A	2041	8/35	0.83	0.41	-	95,101,105,107	0
4	LMT	A	2045	4/35	0.79	0.20	-	58,58,60,60	4
4	LMT	A	2038	10/35	0.71	0.37	-	111,120,120,120	0
5	NI	A	2040	1/1	0.97	0.05	-	120,120,120,120	0
4	LMT	A	2042	12/35	0.76	0.51	-	59,66,69,70	12
4	LMT	A	2047	6/35	0.52	0.42	-	81,88,89,89	6
4	LMT	A	2039	6/35	0.74	0.38	-	57,60,62,63	6

6.5 Other polymers [i](#)

There are no such residues in this entry.