



Full wwPDB X-ray Structure Validation Report ⓘ

Feb 1, 2016 – 07:47 AM GMT

PDB ID : 3C6K
Title : Crystal structure of human spermine synthase in complex with spermidine and 5-methylthioadenosine
Authors : Min, J.; Wu, H.; Zeng, H.; Loppnau, P.; Weigelt, J.; Sundstrom, M.; Arrowsmith, C.H.; Edwards, A.M.; Bochkarev, A.; Pegg, A.E.; Plotnikov, A.N.; Structural Genomics Consortium (SGC)
Deposited on : 2008-02-04
Resolution : 1.95 Å(reported)

This is a Full wwPDB X-ray Structure Validation Report for a publicly released PDB entry.
We welcome your comments at validation@mail.wwpdb.org
A user guide is available at
<http://wwpdb.org/validation/2016/XrayValidationReportHelp>
with specific help available everywhere you see the ⓘ symbol.

The following versions of software and data (see [references ⓘ](#)) were used in the production of this report:

MolProbity : 4.02b-467
Mogul : 1.7 (RC4), CSD as536be (2015)
Xtriage (Phenix) : 1.9-1692
EDS : rb-20026688
Percentile statistics : 20151230.v01 (using entries in the PDB archive December 30th 2015)
Refmac : 5.8.0135
CCP4 : 6.5.0
Ideal geometry (proteins) : Engh & Huber (2001)
Ideal geometry (DNA, RNA) : Parkinson et al. (1996)
Validation Pipeline (wwPDB-VP) : trunk26865

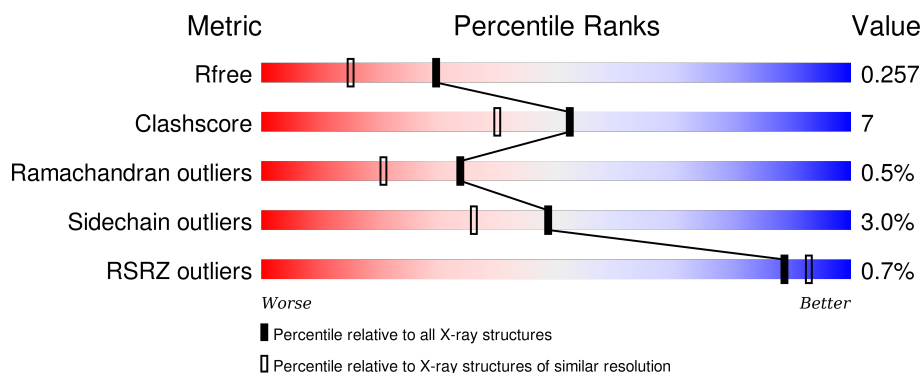
1 Overall quality at a glance

The following experimental techniques were used to determine the structure:

X-RAY DIFFRACTION

The reported resolution of this entry is 1.95 Å.

Percentile scores (ranging between 0-100) for global validation metrics of the entry are shown in the following graphic. The table shows the number of entries on which the scores are based.



Metric	Whole archive (#Entries)	Similar resolution (#Entries, resolution range(Å))
R_{free}	91344	1833 (1.96-1.96)
Clashscore	102246	1953 (1.96-1.96)
Ramachandran outliers	100387	1936 (1.96-1.96)
Sidechain outliers	100360	1936 (1.96-1.96)
RSRZ outliers	91569	1835 (1.96-1.96)

The table below summarises the geometric issues observed across the polymeric chains and their fit to the electron density. The red, orange, yellow and green segments on the lower bar indicate the fraction of residues that contain outliers for ≥ 3 , 2, 1 and 0 types of geometric quality criteria. A grey segment represents the fraction of residues that are not modelled. The numeric value for each fraction is indicated below the corresponding segment, with a dot representing fractions $\leq 5\%$. The upper red bar (where present) indicates the fraction of residues that have poor fit to the electron density. The numeric value is given above the bar.

Mol	Chain	Length	Quality of chain
1	A	381	<div> <div>%</div> <div> <div></div> <div>76%</div> <div>12%</div> <div>•</div> <div>12%</div> </div> </div>
1	B	381	<div> <div></div> <div> <div>76%</div> <div>13%</div> <div>•</div> <div>9%</div> </div> </div>
1	C	381	<div> <div>2%</div> <div> <div></div> <div>77%</div> <div>12%</div> <div>•</div> <div>9%</div> </div> </div>
1	D	381	<div> <div>%</div> <div> <div></div> <div>78%</div> <div>13%</div> <div>•</div> <div>9%</div> </div> </div>

The following table lists non-polymeric compounds, carbohydrate monomers and non-standard

residues in protein, DNA, RNA chains that are outliers for geometric or electron-density-fit criteria:

Mol	Type	Chain	Res	Chirality	Geometry	Clashes	Electron density
2	SPD	A	501	-	-	-	X
2	SPD	C	501	-	-	-	X

2 Entry composition

There are 4 unique types of molecules in this entry. The entry contains 12240 atoms, of which 0 are hydrogens and 0 are deuteriums.

In the tables below, the ZeroOcc column contains the number of atoms modelled with zero occupancy, the AltConf column contains the number of residues with at least one atom in alternate conformation and the Trace column contains the number of residues modelled with at most 2 atoms.

- Molecule 1 is a protein called Spermine synthase.

Mol	Chain	Residues	Atoms					ZeroOcc	AltConf	Trace
1	A	335	Total	C	N	O	S	0	0	0
			2681	1717	440	508	16			
1	B	345	Total	C	N	O	S	0	0	0
			2753	1762	451	524	16			
1	C	346	Total	C	N	O	S	0	0	0
			2758	1764	451	527	16			
1	D	348	Total	C	N	O	S	0	0	0
			2764	1767	452	529	16			

There are 76 discrepancies between the modelled and reference sequences:

Chain	Residue	Modelled	Actual	Comment	Reference
A	-12	MET	-	EXPRESSION TAG	UNP P52788
A	-11	GLY	-	EXPRESSION TAG	UNP P52788
A	-10	SER	-	EXPRESSION TAG	UNP P52788
A	-9	SER	-	EXPRESSION TAG	UNP P52788
A	-8	HIS	-	EXPRESSION TAG	UNP P52788
A	-7	HIS	-	EXPRESSION TAG	UNP P52788
A	-6	HIS	-	EXPRESSION TAG	UNP P52788
A	-5	HIS	-	EXPRESSION TAG	UNP P52788
A	-4	HIS	-	EXPRESSION TAG	UNP P52788
A	-3	HIS	-	EXPRESSION TAG	UNP P52788
A	-2	SER	-	EXPRESSION TAG	UNP P52788
A	-1	SER	-	EXPRESSION TAG	UNP P52788
A	0	GLY	-	EXPRESSION TAG	UNP P52788
A	1	LEU	-	EXPRESSION TAG	UNP P52788
A	2	VAL	-	EXPRESSION TAG	UNP P52788
A	3	PRO	-	EXPRESSION TAG	UNP P52788
A	4	ARG	-	EXPRESSION TAG	UNP P52788
A	5	GLY	-	EXPRESSION TAG	UNP P52788
A	6	SER	-	EXPRESSION TAG	UNP P52788
B	-12	MET	-	EXPRESSION TAG	UNP P52788
B	-11	GLY	-	EXPRESSION TAG	UNP P52788

Continued on next page...

Continued from previous page...

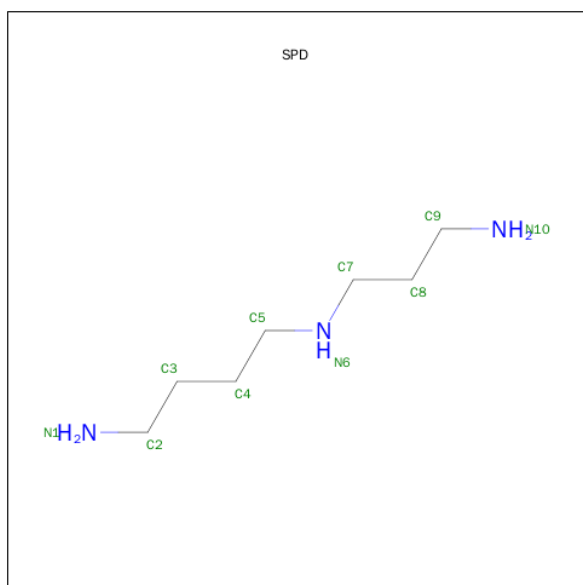
Chain	Residue	Modelled	Actual	Comment	Reference
B	-10	SER	-	EXPRESSION TAG	UNP P52788
B	-9	SER	-	EXPRESSION TAG	UNP P52788
B	-8	HIS	-	EXPRESSION TAG	UNP P52788
B	-7	HIS	-	EXPRESSION TAG	UNP P52788
B	-6	HIS	-	EXPRESSION TAG	UNP P52788
B	-5	HIS	-	EXPRESSION TAG	UNP P52788
B	-4	HIS	-	EXPRESSION TAG	UNP P52788
B	-3	HIS	-	EXPRESSION TAG	UNP P52788
B	-2	SER	-	EXPRESSION TAG	UNP P52788
B	-1	SER	-	EXPRESSION TAG	UNP P52788
B	0	GLY	-	EXPRESSION TAG	UNP P52788
B	1	LEU	-	EXPRESSION TAG	UNP P52788
B	2	VAL	-	EXPRESSION TAG	UNP P52788
B	3	PRO	-	EXPRESSION TAG	UNP P52788
B	4	ARG	-	EXPRESSION TAG	UNP P52788
B	5	GLY	-	EXPRESSION TAG	UNP P52788
B	6	SER	-	EXPRESSION TAG	UNP P52788
C	-12	MET	-	EXPRESSION TAG	UNP P52788
C	-11	GLY	-	EXPRESSION TAG	UNP P52788
C	-10	SER	-	EXPRESSION TAG	UNP P52788
C	-9	SER	-	EXPRESSION TAG	UNP P52788
C	-8	HIS	-	EXPRESSION TAG	UNP P52788
C	-7	HIS	-	EXPRESSION TAG	UNP P52788
C	-6	HIS	-	EXPRESSION TAG	UNP P52788
C	-5	HIS	-	EXPRESSION TAG	UNP P52788
C	-4	HIS	-	EXPRESSION TAG	UNP P52788
C	-3	HIS	-	EXPRESSION TAG	UNP P52788
C	-2	SER	-	EXPRESSION TAG	UNP P52788
C	-1	SER	-	EXPRESSION TAG	UNP P52788
C	0	GLY	-	EXPRESSION TAG	UNP P52788
C	1	LEU	-	EXPRESSION TAG	UNP P52788
C	2	VAL	-	EXPRESSION TAG	UNP P52788
C	3	PRO	-	EXPRESSION TAG	UNP P52788
C	4	ARG	-	EXPRESSION TAG	UNP P52788
C	5	GLY	-	EXPRESSION TAG	UNP P52788
C	6	SER	-	EXPRESSION TAG	UNP P52788
D	-12	MET	-	EXPRESSION TAG	UNP P52788
D	-11	GLY	-	EXPRESSION TAG	UNP P52788
D	-10	SER	-	EXPRESSION TAG	UNP P52788
D	-9	SER	-	EXPRESSION TAG	UNP P52788
D	-8	HIS	-	EXPRESSION TAG	UNP P52788
D	-7	HIS	-	EXPRESSION TAG	UNP P52788

Continued on next page...

Continued from previous page...

Chain	Residue	Modelled	Actual	Comment	Reference
D	-6	HIS	-	EXPRESSION TAG	UNP P52788
D	-5	HIS	-	EXPRESSION TAG	UNP P52788
D	-4	HIS	-	EXPRESSION TAG	UNP P52788
D	-3	HIS	-	EXPRESSION TAG	UNP P52788
D	-2	SER	-	EXPRESSION TAG	UNP P52788
D	-1	SER	-	EXPRESSION TAG	UNP P52788
D	0	GLY	-	EXPRESSION TAG	UNP P52788
D	1	LEU	-	EXPRESSION TAG	UNP P52788
D	2	VAL	-	EXPRESSION TAG	UNP P52788
D	3	PRO	-	EXPRESSION TAG	UNP P52788
D	4	ARG	-	EXPRESSION TAG	UNP P52788
D	5	GLY	-	EXPRESSION TAG	UNP P52788
D	6	SER	-	EXPRESSION TAG	UNP P52788

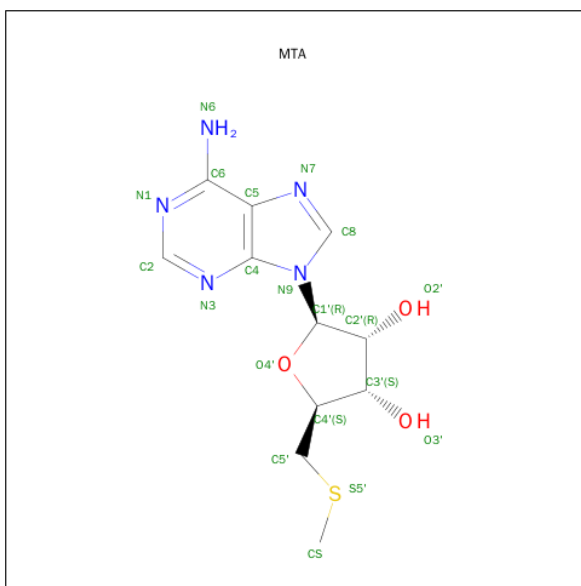
- Molecule 2 is SPERMIDINE (three-letter code: SPD) (formula: $C_7H_{19}N_3$).



Mol	Chain	Residues	Atoms			ZeroOcc	AltConf
2	A	1	Total	C	N	0	0
			10	7	3		
2	B	1	Total	C	N	0	0
			10	7	3		
2	C	1	Total	C	N	0	0
			10	7	3		
2	D	1	Total	C	N	0	0
			10	7	3		

- Molecule 3 is 5'-DEOXY-5'-METHYLTHIOADENOSINE (three-letter code: MTA)

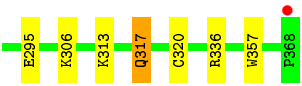
(formula: C₁₁H₁₅N₅O₃S).



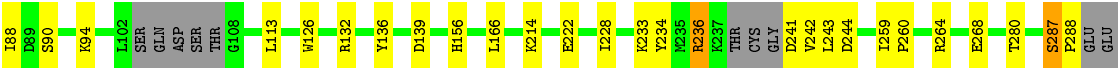
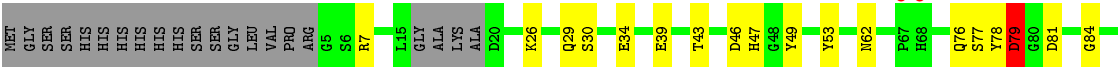
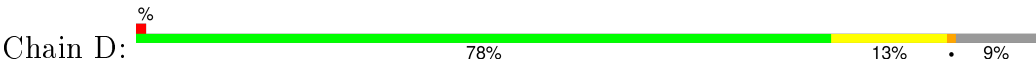
Mol	Chain	Residues	Atoms					ZeroOcc	AltConf
3	A	1	Total	C	N	O	S	0	0
			20	11	5	3	1		
3	B	1	Total	C	N	O	S	0	0
			20	11	5	3	1		
3	C	1	Total	C	N	O	S	0	0
			20	11	5	3	1		
3	D	1	Total	C	N	O	S	0	0
			20	11	5	3	1		

- Molecule 4 is water.

Mol	Chain	Residues	Atoms		ZeroOcc	AltConf
4	A	283	Total	O	0	0
			283	283		
4	B	295	Total	O	0	0
			295	295		
4	C	272	Total	O	0	0
			272	272		
4	D	314	Total	O	0	0
			314	314		



● Molecule 1: Spermine synthase



4 Data and refinement statistics

Property	Value	Source
Space group	P 1	Depositor
Cell constants a, b, c, α , β , γ	43.38Å 74.03Å 143.23Å 94.23° 92.88° 107.07°	Depositor
Resolution (Å)	40.56 – 1.95 40.54 – 1.95	Depositor EDS
% Data completeness (in resolution range)	94.0 (40.56-1.95) 92.2 (40.54-1.95)	Depositor EDS
R_{merge}	(Not available)	Depositor
R_{sym}	(Not available)	Depositor
$\langle I/\sigma(I) \rangle$ ¹	2.62 (at 1.95Å)	Xtriage
Refinement program	REFMAC 5.2.0019	Depositor
R, R_{free}	0.198 , 0.257 0.198 , 0.257	Depositor DCC
R_{free} test set	5758 reflections (5.24%)	DCC
Wilson B-factor (Å ²)	21.3	Xtriage
Anisotropy	0.052	Xtriage
Bulk solvent k_{sol} (e/Å ³), B_{sol} (Å ²)	0.34 , 27.1	EDS
Estimated twinning fraction	0.077 for h,-h-k,-l	Xtriage
L-test for twinning ²	$\langle L \rangle = 0.46$, $\langle L^2 \rangle = 0.29$	Xtriage
Outliers	0 of 115644 reflections	Xtriage
F_o, F_c correlation	0.94	EDS
Total number of atoms	12240	wwPDB-VP
Average B, all atoms (Å ²)	22.0	wwPDB-VP

Xtriage's analysis on translational NCS is as follows: *The largest off-origin peak in the Patterson function is 6.21% of the height of the origin peak. No significant pseudotranslation is detected.*

¹Intensities estimated from amplitudes.

²Theoretical values of $\langle |L| \rangle$, $\langle L^2 \rangle$ for acentric reflections are 0.5, 0.375 respectively for untwinned datasets, and 0.333, 0.2 for perfectly twinned datasets.

5 Model quality

5.1 Standard geometry

Bond lengths and bond angles in the following residue types are not validated in this section: MTA, SPD

The Z score for a bond length (or angle) is the number of standard deviations the observed value is removed from the expected value. A bond length (or angle) with $|Z| > 5$ is considered an outlier worth inspection. RMSZ is the root-mean-square of all Z scores of the bond lengths (or angles).

Mol	Chain	Bond lengths		Bond angles	
		RMSZ	# Z >5	RMSZ	# Z >5
1	A	0.83	1/2727 (0.0%)	0.79	0/3677
1	B	0.82	0/2802	0.81	4/3779 (0.1%)
1	C	0.85	1/2807 (0.0%)	0.85	3/3786 (0.1%)
1	D	0.82	1/2813 (0.0%)	0.79	3/3795 (0.1%)
All	All	0.83	3/11149 (0.0%)	0.81	10/15037 (0.1%)

Chiral center outliers are detected by calculating the chiral volume of a chiral center and verifying if the center is modelled as a planar moiety or with the opposite hand. A planarity outlier is detected by checking planarity of atoms in a peptide group, atoms in a mainchain group or atoms of a sidechain that are expected to be planar.

Mol	Chain	#Chirality outliers	#Planarity outliers
1	B	0	2
1	C	0	1
1	D	0	2
All	All	0	5

All (3) bond length outliers are listed below:

Mol	Chain	Res	Type	Atoms	Z	Observed(Å)	Ideal(Å)
1	C	320	CYS	CB-SG	-8.47	1.67	1.82
1	A	320	CYS	CB-SG	-7.61	1.69	1.82
1	D	320	CYS	CB-SG	-5.86	1.72	1.81

All (10) bond angle outliers are listed below:

Mol	Chain	Res	Type	Atoms	Z	Observed(°)	Ideal(°)
1	C	336	ARG	NE-CZ-NH2	-13.11	113.75	120.30
1	C	336	ARG	NE-CZ-NH1	11.04	125.82	120.30
1	D	132	ARG	NE-CZ-NH1	5.77	123.19	120.30

Continued on next page...

Continued from previous page...

Mol	Chain	Res	Type	Atoms	Z	Observed(°)	Ideal(°)
1	B	278	ASP	CB-CG-OD1	5.67	123.41	118.30
1	B	176	ASP	CB-CG-OD1	5.54	123.28	118.30
1	D	79	ASP	N-CA-C	5.37	125.49	111.00
1	C	46	ASP	CB-CG-OD2	-5.24	113.59	118.30
1	B	176	ASP	CB-CG-OD2	-5.14	113.67	118.30
1	D	132	ARG	NE-CZ-NH2	-5.09	117.76	120.30
1	B	278	ASP	CB-CG-OD2	-5.07	113.73	118.30

There are no chirality outliers.

All (5) planarity outliers are listed below:

Mol	Chain	Res	Type	Group
1	B	45	GLN	Peptide
1	B	46	ASP	Peptide
1	C	66	TYR	Peptide
1	D	78	TYR	Peptide
1	D	79	ASP	Peptide

5.2 Too-close contacts ⓘ

In the following table, the Non-H and H(model) columns list the number of non-hydrogen atoms and hydrogen atoms in the chain respectively. The H(added) column lists the number of hydrogen atoms added and optimized by MolProbity. The Clashes column lists the number of clashes within the asymmetric unit, whereas Symm-Clashes lists symmetry related clashes.

Mol	Chain	Non-H	H(model)	H(added)	Clashes	Symm-Clashes
1	A	2681	0	2687	31	0
1	B	2753	0	2752	40	0
1	C	2758	0	2750	42	0
1	D	2764	0	2753	42	0
2	A	10	0	19	1	0
2	B	10	0	19	0	0
2	C	10	0	19	0	0
2	D	10	0	19	0	0
3	A	20	0	15	0	0
3	B	20	0	15	0	0
3	C	20	0	15	0	0
3	D	20	0	15	2	0
4	A	283	0	0	4	0
4	B	295	0	0	9	0
4	C	272	0	0	5	1

Continued on next page...

Continued from previous page...

Mol	Chain	Non-H	H(model)	H(added)	Clashes	Symm-Clashes
4	D	314	0	0	8	1
All	All	12240	0	11078	148	1

The all-atom clashscore is defined as the number of clashes found per 1000 atoms (including hydrogen atoms). The all-atom clashscore for this structure is 7.

All (148) close contacts within the same asymmetric unit are listed below, sorted by their clash magnitude.

Atom-1	Atom-2	Interatomic distance (Å)	Clash overlap (Å)
1:C:14:MET:HG2	4:D:869:HOH:O	1.47	1.15
1:D:236:ARG:HH11	1:D:236:ARG:HG3	0.95	1.10
1:D:287:SER:HB3	1:D:288:PRO:HD2	1.39	1.03
1:D:236:ARG:NH1	1:D:236:ARG:HG3	1.69	0.97
1:A:207:LEU:HD23	1:A:243:LEU:HD21	1.51	0.93
1:D:236:ARG:CG	1:D:236:ARG:HH11	1.84	0.91
1:B:77:SER:OG	1:B:79:ASP:HB2	1.70	0.91
1:C:65:ILE:HG22	1:C:67:PRO:HD3	1.52	0.91
1:B:83:GLN:N	4:B:623:HOH:O	2.05	0.89
1:A:277:ASN:ND2	4:A:528:HOH:O	2.06	0.89
1:D:77:SER:CB	1:D:79:ASP:HB2	2.03	0.88
1:D:293:THR:HG21	4:D:894:HOH:O	1.76	0.84
1:A:25:LEU:O	1:A:29:GLN:HG3	1.78	0.84
1:D:77:SER:OG	1:D:79:ASP:HB2	1.79	0.82
1:D:77:SER:HB2	1:D:79:ASP:HB2	1.61	0.82
1:D:94:LYS:HE3	4:D:924:HOH:O	1.81	0.80
1:C:77:SER:C	1:C:79:ASP:H	1.85	0.78
1:B:139:ASP:OD1	1:B:156:HIS:HD2	1.67	0.78
1:C:139:ASP:OD1	1:C:156:HIS:HD2	1.68	0.76
1:C:78:TYR:CE1	1:D:47:HIS:HD2	2.05	0.75
1:B:288:PRO:C	4:B:722:HOH:O	2.25	0.74
1:D:77:SER:OG	1:D:79:ASP:CB	2.35	0.73
1:B:228:ILE:CD1	1:B:255:ILE:CD1	2.68	0.72
1:A:62:ASN:ND2	1:B:62:ASN:OD1	2.22	0.72
1:D:236:ARG:CG	1:D:236:ARG:NH1	2.47	0.71
1:D:287:SER:HB3	1:D:288:PRO:CD	2.20	0.70
1:B:207:LEU:HD23	1:B:243:LEU:HD11	1.74	0.70
1:D:43:THR:HG23	4:D:800:HOH:O	1.91	0.69
1:B:77:SER:HG	1:B:79:ASP:HB2	1.55	0.69
1:C:77:SER:O	1:C:79:ASP:N	2.24	0.67
1:B:83:GLN:NE2	4:B:566:HOH:O	2.28	0.67
1:B:317:GLN:HE21	1:B:357:TRP:HE1	1.41	0.67

Continued on next page...

Continued from previous page...

Atom-1	Atom-2	Interatomic distance (Å)	Clash overlap (Å)
1:D:317:GLN:HE21	1:D:357:TRP:HE1	1.41	0.66
1:D:139:ASP:OD1	1:D:156:HIS:HD2	1.78	0.66
1:A:236:ARG:O	1:A:237:LYS:HB2	1.94	0.66
1:A:317:GLN:HE21	1:A:357:TRP:HE1	1.45	0.65
4:A:731:HOH:O	1:B:158:LYS:HE2	1.97	0.65
1:B:109:ARG:N	4:B:769:HOH:O	2.30	0.65
1:A:228:ILE:CD1	1:A:255:ILE:CD1	2.75	0.64
1:B:77:SER:CB	1:B:79:ASP:HB2	2.28	0.63
1:B:207:LEU:CD2	1:B:243:LEU:HD11	2.29	0.62
1:B:228:ILE:HD13	1:B:255:ILE:HD11	1.81	0.62
1:C:65:ILE:O	1:C:67:PRO:HD2	2.00	0.62
1:C:25:LEU:O	1:C:29:GLN:HG3	2.01	0.61
1:B:43:THR:HG23	4:B:632:HOH:O	2.01	0.61
1:C:21:GLY:HA3	1:C:67:PRO:HG3	1.83	0.60
1:A:259:ILE:HD11	1:A:300:ILE:HG12	1.82	0.60
1:D:236:ARG:HG2	4:D:876:HOH:O	2.01	0.60
1:A:309:LYS:NZ	4:A:586:HOH:O	2.34	0.60
1:C:75:LEU:HD22	1:C:88:ILE:HD12	1.84	0.59
1:B:292:SER:N	1:B:295:GLU:OE1	2.35	0.59
1:A:242:VAL:HG23	1:A:243:LEU:HD23	1.84	0.59
1:D:39:GLU:HG3	1:D:53:TYR:CE1	2.38	0.59
1:B:228:ILE:HD12	1:B:255:ILE:HD12	1.85	0.59
1:A:8:HIS:HE1	1:A:74:ASP:OD2	1.86	0.58
1:B:313:LYS:NZ	4:B:744:HOH:O	2.35	0.58
1:A:171:ASN:ND2	2:A:501:SPD:H22	2.18	0.58
1:C:77:SER:C	1:C:79:ASP:N	2.56	0.57
1:D:233:LYS:HD2	1:D:234:TYR:CZ	2.40	0.56
1:B:228:ILE:CD1	1:B:255:ILE:HD11	2.35	0.56
1:A:207:LEU:CD2	1:A:243:LEU:HD21	2.29	0.56
1:C:139:ASP:OD1	1:C:156:HIS:CD2	2.56	0.55
1:C:317:GLN:HE21	1:C:357:TRP:HE1	1.55	0.55
1:D:313:LYS:CE	4:D:839:HOH:O	2.54	0.55
1:C:20:ASP:N	4:C:974:HOH:O	2.40	0.55
1:C:11:LEU:HD13	1:C:13:PHE:CE1	2.42	0.55
1:B:228:ILE:HD12	1:B:255:ILE:CD1	2.37	0.54
1:A:228:ILE:HD12	1:A:255:ILE:CD1	2.37	0.54
1:B:249:ASP:CG	4:B:701:HOH:O	2.44	0.54
1:D:30:SER:O	1:D:34:GLU:HG2	2.08	0.54
1:C:39:GLU:HG3	1:C:53:TYR:CE1	2.41	0.54
1:D:259:ILE:HB	1:D:260:PRO:HD3	1.89	0.54
1:C:313:LYS:NZ	4:C:892:HOH:O	2.40	0.54

Continued on next page...

Continued from previous page...

Atom-1	Atom-2	Interatomic distance (Å)	Clash overlap (Å)
1:D:214:LYS:H	1:D:214:LYS:HE2	1.72	0.53
1:D:214:LYS:N	1:D:214:LYS:HE2	2.22	0.53
1:A:317:GLN:NE2	1:A:357:TRP:HE1	2.06	0.53
1:B:109:ARG:HB3	1:B:109:ARG:CZ	2.38	0.52
1:B:317:GLN:NE2	1:B:357:TRP:HE1	2.07	0.52
1:A:228:ILE:HD12	1:A:255:ILE:HD12	1.93	0.51
1:C:75:LEU:HD22	1:C:88:ILE:CD1	2.40	0.51
1:B:38:ALA:O	1:B:53:TYR:HA	2.11	0.51
1:C:7:ARG:HD2	4:C:928:HOH:O	2.11	0.51
1:B:26:LYS:O	1:B:29:GLN:HG2	2.10	0.51
1:C:29:GLN:HG2	1:C:39:GLU:OE1	2.11	0.50
1:D:77:SER:OG	1:D:79:ASP:HB3	2.10	0.50
1:B:320:CYS:SG	1:B:323:LEU:HG	2.52	0.50
1:D:264:ARG:O	1:D:268:GLU:HG3	2.13	0.49
1:D:242:VAL:HG12	1:D:243:LEU:HD23	1.94	0.49
1:B:86:GLU:OE1	4:B:617:HOH:O	2.20	0.49
1:D:241:ASP:HA	4:D:882:HOH:O	2.11	0.49
1:B:139:ASP:OD1	1:B:156:HIS:CD2	2.56	0.49
1:B:320:CYS:HB3	1:B:357:TRP:CZ3	2.48	0.49
1:A:47:HIS:HD2	1:B:78:TYR:CZ	2.31	0.48
1:C:47:HIS:HD2	4:C:853:HOH:O	1.96	0.48
1:C:317:GLN:NE2	1:C:357:TRP:HE1	2.11	0.48
1:C:7:ARG:NH2	1:C:89:ASP:OD1	2.45	0.48
1:A:22:GLU:HB2	1:A:49:TYR:CE2	2.48	0.48
1:C:207:LEU:HD11	1:C:251:TYR:HB2	1.93	0.48
1:D:43:THR:HG22	1:D:49:TYR:HD1	1.78	0.48
1:C:78:TYR:CD2	1:C:78:TYR:O	2.67	0.48
1:C:38:ALA:O	1:C:53:TYR:HA	2.14	0.47
1:B:237:LYS:HE3	4:B:679:HOH:O	2.13	0.47
1:C:27:GLY:O	1:C:98:ARG:NH1	2.43	0.47
1:C:133:LEU:HD11	1:D:113:LEU:HD13	1.97	0.47
1:B:218:VAL:O	1:B:251:TYR:HA	2.14	0.47
1:C:292:SER:HA	1:C:295:GLU:HB2	1.97	0.47
1:B:84:GLY:O	1:B:88:ILE:HG12	2.14	0.47
1:A:13:PHE:CD2	1:A:110:VAL:HG22	2.50	0.46
1:A:349:CYS:SG	1:B:349:CYS:SG	3.13	0.46
1:C:243:LEU:HG	1:C:244:ASP:N	2.29	0.46
1:A:232:LYS:HD2	1:A:243:LEU:O	2.16	0.46
1:A:228:ILE:CD1	1:A:255:ILE:HD11	2.44	0.46
1:C:62:ASN:OD1	1:D:62:ASN:OD1	2.35	0.45
1:D:222:GLU:HG2	1:D:228:ILE:HD11	1.99	0.45

Continued on next page...

Continued from previous page...

Atom-1	Atom-2	Interatomic distance (Å)	Clash overlap (Å)
1:C:78:TYR:CD1	1:D:47:HIS:HD2	2.34	0.45
1:D:295:GLU:HA	1:D:295:GLU:OE2	2.17	0.45
1:D:313:LYS:HE3	4:D:839:HOH:O	2.16	0.45
1:C:228:ILE:HD12	1:C:255:ILE:HD12	1.97	0.45
1:A:228:ILE:HD13	1:A:255:ILE:HD11	1.99	0.45
1:A:122:ILE:CG2	1:A:138:ILE:HG22	2.46	0.44
1:C:145:GLU:HG3	4:C:842:HOH:O	2.16	0.44
1:A:14:MET:O	1:A:109:ARG:HB2	2.17	0.44
1:A:311:ASP:HB3	4:A:752:HOH:O	2.18	0.44
1:C:97:GLU:OE1	1:C:100:LYS:NZ	2.44	0.43
1:A:38:ALA:O	1:A:53:TYR:HA	2.18	0.43
1:D:84:GLY:O	1:D:88:ILE:HG12	2.18	0.43
1:D:26:LYS:HA	1:D:29:GLN:HG3	2.00	0.43
1:C:222:GLU:O	1:C:255:ILE:HA	2.18	0.43
1:C:35:GLN:NE2	1:C:87:GLU:OE1	2.51	0.43
1:C:243:LEU:HG	1:C:244:ASP:H	1.85	0.42
1:C:137:ASP:OD1	1:C:137:ASP:N	2.50	0.42
1:B:7:ARG:NH2	1:B:115:PRO:HG2	2.35	0.42
1:D:317:GLN:NE2	1:D:357:TRP:HE1	2.12	0.42
1:A:8:HIS:CD2	1:A:76:GLN:HG2	2.55	0.41
1:B:8:HIS:HB2	1:B:76:GLN:OE1	2.20	0.41
1:D:126:TRP:HB2	1:D:136:TYR:CE2	2.55	0.41
1:C:78:TYR:O	1:C:78:TYR:HD2	2.03	0.41
1:C:114:PRO:HA	1:C:115:PRO:HD3	1.92	0.41
1:B:210:ILE:O	1:B:215:PRO:HD3	2.21	0.41
1:D:166:LEU:CD1	3:D:401:MTA:H3'	2.51	0.41
1:B:137:ASP:OD1	1:B:137:ASP:N	2.53	0.41
1:A:149:TYR:HB3	1:A:284:ILE:HD13	2.03	0.41
1:B:44:TRP:CG	1:B:47:HIS:HB2	2.56	0.41
1:D:280:THR:OG1	3:D:401:MTA:H8	2.21	0.40
1:D:139:ASP:OD1	1:D:156:HIS:CD2	2.67	0.40
1:A:15:LEU:HD11	1:A:99:MET:CE	2.52	0.40
1:A:183:ILE:HG21	1:A:206:ILE:HD11	2.02	0.40
1:C:30:SER:O	1:C:34:GLU:HG2	2.22	0.40

All (1) symmetry-related close contacts are listed below. The label for Atom-2 includes the symmetry operator and encoded unit-cell translations to be applied.

Atom-1	Atom-2	Interatomic distance (Å)	Clash overlap (Å)
4:C:782:HOH:O	4:D:851:HOH:O[1_455]	2.01	0.19

5.3 Torsion angles [i](#)

5.3.1 Protein backbone [i](#)

In the following table, the Percentiles column shows the percent Ramachandran outliers of the chain as a percentile score with respect to all X-ray entries followed by that with respect to entries of similar resolution.

The Analysed column shows the number of residues for which the backbone conformation was analysed, and the total number of residues.

Mol	Chain	Analysed	Favoured	Allowed	Outliers	Percentiles	
1	A	323/381 (85%)	313 (97%)	10 (3%)	0	100	100
1	B	333/381 (87%)	322 (97%)	10 (3%)	1 (0%)	46	35
1	C	334/381 (88%)	325 (97%)	6 (2%)	3 (1%)	21	9
1	D	338/381 (89%)	326 (96%)	10 (3%)	2 (1%)	30	16
All	All	1328/1524 (87%)	1286 (97%)	36 (3%)	6 (0%)	34	21

All (6) Ramachandran outliers are listed below:

Mol	Chain	Res	Type
1	B	46	ASP
1	C	67	PRO
1	C	78	TYR
1	D	81	ASP
1	C	66	TYR
1	D	287	SER

5.3.2 Protein sidechains [i](#)

In the following table, the Percentiles column shows the percent sidechain outliers of the chain as a percentile score with respect to all X-ray entries followed by that with respect to entries of similar resolution.

The Analysed column shows the number of residues for which the sidechain conformation was analysed, and the total number of residues.

Mol	Chain	Analysed	Rotameric	Outliers	Percentiles	
1	A	297/333 (89%)	289 (97%)	8 (3%)	52	41
1	B	305/333 (92%)	292 (96%)	13 (4%)	35	20
1	C	305/333 (92%)	299 (98%)	6 (2%)	63	55
1	D	304/333 (91%)	295 (97%)	9 (3%)	48	36

Continued on next page...

Continued from previous page...

Mol	Chain	Analysed	Rotameric	Outliers	Percentiles
All	All	1211/1332 (91%)	1175 (97%)	36 (3%)	48 36

All (36) residues with a non-rotameric sidechain are listed below:

Mol	Chain	Res	Type
1	A	23	THR
1	A	33	GLN
1	A	34	GLU
1	A	90	SER
1	A	243	LEU
1	A	287	SER
1	A	317	GLN
1	A	351	PRO
1	B	6	SER
1	B	40	SER
1	B	46	ASP
1	B	75	LEU
1	B	76	GLN
1	B	79	ASP
1	B	94	LYS
1	B	103	SER
1	B	109	ARG
1	B	194	LYS
1	B	249	ASP
1	B	287	SER
1	B	317	GLN
1	C	11	LEU
1	C	30	SER
1	C	68	HIS
1	C	75	LEU
1	C	306	LYS
1	C	317	GLN
1	D	7	ARG
1	D	46	ASP
1	D	76	GLN
1	D	79	ASP
1	D	90	SER
1	D	236	ARG
1	D	244	ASP
1	D	292	SER
1	D	317	GLN

Some sidechains can be flipped to improve hydrogen bonding and reduce clashes. All (27) such sidechains are listed below:

Mol	Chain	Res	Type
1	A	8	HIS
1	A	33	GLN
1	A	47	HIS
1	A	162	ASN
1	A	171	ASN
1	A	225	GLN
1	A	317	GLN
1	B	42	HIS
1	B	156	HIS
1	B	162	ASN
1	B	171	ASN
1	B	225	GLN
1	B	317	GLN
1	C	45	GLN
1	C	47	HIS
1	C	83	GLN
1	C	156	HIS
1	C	162	ASN
1	C	171	ASN
1	C	317	GLN
1	D	33	GLN
1	D	47	HIS
1	D	62	ASN
1	D	76	GLN
1	D	156	HIS
1	D	162	ASN
1	D	317	GLN

5.3.3 RNA ⓘ

There are no RNA molecules in this entry.

5.4 Non-standard residues in protein, DNA, RNA chains ⓘ

There are no non-standard protein/DNA/RNA residues in this entry.

5.5 Carbohydrates ⓘ

There are no carbohydrates in this entry.

5.6 Ligand geometry

8 ligands are modelled in this entry.

In the following table, the Counts columns list the number of bonds (or angles) for which Mogul statistics could be retrieved, the number of bonds (or angles) that are observed in the model and the number of bonds (or angles) that are defined in the chemical component dictionary. The Link column lists molecule types, if any, to which the group is linked. The Z score for a bond length (or angle) is the number of standard deviations the observed value is removed from the expected value. A bond length (or angle) with $|Z| > 2$ is considered an outlier worth inspection. RMSZ is the root-mean-square of all Z scores of the bond lengths (or angles).

Mol	Type	Chain	Res	Link	Bond lengths			Bond angles		
					Counts	RMSZ	# $ Z > 2$	Counts	RMSZ	# $ Z > 2$
3	MTA	A	401	-	17,22,22	1.41	2 (11%)	17,32,32	2.39	6 (35%)
2	SPD	A	501	-	9,9,9	0.39	0	8,8,8	1.36	1 (12%)
3	MTA	B	401	-	17,22,22	1.32	2 (11%)	17,32,32	2.45	6 (35%)
2	SPD	B	501	-	9,9,9	0.53	0	8,8,8	1.60	3 (37%)
3	MTA	C	401	-	17,22,22	1.14	2 (11%)	17,32,32	2.60	6 (35%)
2	SPD	C	501	-	9,9,9	0.44	0	8,8,8	1.33	2 (25%)
3	MTA	D	401	-	17,22,22	1.44	3 (17%)	17,32,32	2.78	5 (29%)
2	SPD	D	501	-	9,9,9	0.42	0	8,8,8	1.39	1 (12%)

In the following table, the Chirals column lists the number of chiral outliers, the number of chiral centers analysed, the number of these observed in the model and the number defined in the chemical component dictionary. Similar counts are reported in the Torsion and Rings columns. '-' means no outliers of that kind were identified.

Mol	Type	Chain	Res	Link	Chirals	Torsions	Rings
3	MTA	A	401	-	-	0/3/23/23	0/3/3/3
2	SPD	A	501	-	-	0/7/7/7	0/0/0/0
3	MTA	B	401	-	-	0/3/23/23	0/3/3/3
2	SPD	B	501	-	-	0/7/7/7	0/0/0/0
3	MTA	C	401	-	-	0/3/23/23	0/3/3/3
2	SPD	C	501	-	-	0/7/7/7	0/0/0/0
3	MTA	D	401	-	-	0/3/23/23	0/3/3/3
2	SPD	D	501	-	-	0/7/7/7	0/0/0/0

All (9) bond length outliers are listed below:

Mol	Chain	Res	Type	Atoms	Z	Observed(Å)	Ideal(Å)
3	A	401	MTA	C5'-S5'	-3.53	1.76	1.80
3	D	401	MTA	C5-N7	-2.13	1.32	1.39

Continued on next page...

Continued from previous page...

Mol	Chain	Res	Type	Atoms	Z	Observed(Å)	Ideal(Å)
3	C	401	MTA	C2-N3	2.15	1.36	1.32
3	D	401	MTA	C2-N3	2.42	1.36	1.32
3	B	401	MTA	C2-N3	2.90	1.37	1.32
3	A	401	MTA	C5-C4	3.14	1.47	1.40
3	B	401	MTA	C5-C4	3.16	1.47	1.40
3	C	401	MTA	C5-C4	3.41	1.48	1.40
3	D	401	MTA	C5-C4	3.60	1.48	1.40

All (30) bond angle outliers are listed below:

Mol	Chain	Res	Type	Atoms	Z	Observed(°)	Ideal(°)
3	C	401	MTA	N3-C2-N1	-7.83	122.90	128.89
3	D	401	MTA	N3-C2-N1	-7.73	122.98	128.89
3	A	401	MTA	N3-C2-N1	-6.37	124.02	128.89
3	B	401	MTA	N3-C2-N1	-5.46	124.72	128.89
3	B	401	MTA	C4-C5-N7	-4.61	105.23	109.48
3	D	401	MTA	C4-C5-N7	-4.42	105.41	109.48
3	B	401	MTA	C1'-N9-C4	-4.18	120.64	126.94
3	C	401	MTA	C1'-N9-C4	-4.12	120.72	126.94
3	D	401	MTA	C4'-O4'-C1'	-3.65	105.71	109.72
3	D	401	MTA	C1'-N9-C4	-3.60	121.51	126.94
3	A	401	MTA	C4-C5-N7	-3.20	106.54	109.48
3	A	401	MTA	C4'-O4'-C1'	-3.05	106.37	109.72
3	B	401	MTA	C4'-O4'-C1'	-2.96	106.46	109.72
3	A	401	MTA	C1'-N9-C4	-2.93	122.53	126.94
3	C	401	MTA	C4'-O4'-C1'	-2.86	106.58	109.72
2	D	501	SPD	C7-C8-C9	-2.72	103.15	114.31
3	A	401	MTA	CS-S5'-C5'	-2.45	97.22	101.21
3	A	401	MTA	C5'-C4'-C3'	-2.36	108.87	114.98
2	C	501	SPD	C7-C8-C9	-2.28	104.96	114.31
3	C	401	MTA	C2'-C1'-N9	-2.24	110.87	114.29
2	B	501	SPD	C7-C8-C9	-2.15	105.50	114.31
2	B	501	SPD	C3-C4-C5	-2.07	103.81	113.69
3	C	401	MTA	O4'-C1'-N9	2.05	112.40	108.10
2	C	501	SPD	C8-C7-N6	2.13	117.29	111.96
3	B	401	MTA	C2-N1-C6	2.18	122.66	118.77
3	B	401	MTA	O4'-C4'-C5'	2.38	115.34	108.85
3	C	401	MTA	C2-N1-C6	2.49	123.21	118.77
2	A	501	SPD	C8-C7-N6	2.62	118.51	111.96
3	D	401	MTA	C2-N1-C6	2.97	124.07	118.77
2	B	501	SPD	C8-C7-N6	3.13	119.78	111.96

There are no chirality outliers.

There are no torsion outliers.

There are no ring outliers.

2 monomers are involved in 3 short contacts:

Mol	Chain	Res	Type	Clashes	Symm-Clashes
2	A	501	SPD	1	0
3	D	401	MTA	2	0

5.7 Other polymers [i](#)

There are no such residues in this entry.

5.8 Polymer linkage issues [i](#)

There are no chain breaks in this entry.

6 Fit of model and data [i](#)

6.1 Protein, DNA and RNA chains [i](#)

In the following table, the column labelled ‘#RSRZ> 2’ contains the number (and percentage) of RSRZ outliers, followed by percent RSRZ outliers for the chain as percentile scores relative to all X-ray entries and entries of similar resolution. The OWAB column contains the minimum, median, 95th percentile and maximum values of the occupancy-weighted average B-factor per residue. The column labelled ‘Q< 0.9’ lists the number of (and percentage) of residues with an average occupancy less than 0.9.

Mol	Chain	Analysed	<RSRZ>	#RSRZ>2	OWAB(Å ²)	Q<0.9
1	A	335/381 (87%)	-0.42	2 (0%) 90 94	10, 20, 37, 50	0
1	B	345/381 (90%)	-0.42	0 100 100	11, 20, 37, 47	0
1	C	346/381 (90%)	-0.38	6 (1%) 73 81	10, 20, 38, 54	0
1	D	348/381 (91%)	-0.39	2 (0%) 90 94	11, 20, 40, 49	0
All	All	1374/1524 (90%)	-0.40	10 (0%) 89 93	10, 20, 38, 54	0

All (10) RSRZ outliers are listed below:

Mol	Chain	Res	Type	RSRZ
1	C	67	PRO	3.6
1	C	78	TYR	3.4
1	C	68	HIS	3.4
1	C	368	PRO	3.2
1	A	68	HIS	2.4
1	C	104	GLN	2.4
1	D	67	PRO	2.3
1	D	68	HIS	2.2
1	C	79	ASP	2.1
1	A	367	LYS	2.0

6.2 Non-standard residues in protein, DNA, RNA chains [i](#)

There are no non-standard protein/DNA/RNA residues in this entry.

6.3 Carbohydrates [i](#)

There are no carbohydrates in this entry.

6.4 Ligands [i](#)

In the following table, the Atoms column lists the number of modelled atoms in the group and the number defined in the chemical component dictionary. LLDF column lists the quality of electron density of the group with respect to its neighbouring residues in protein, DNA or RNA chains. The B-factors column lists the minimum, median, 95th percentile and maximum values of B factors of atoms in the group. The column labelled 'Q< 0.9' lists the number of atoms with occupancy less than 0.9.

Mol	Type	Chain	Res	Atoms	RSCC	RSR	LLDF	B-factors(Å ²)	Q<0.9
2	SPD	A	501	10/10	0.94	0.12	3.14	10,13,20,21	0
2	SPD	C	501	10/10	0.96	0.09	2.03	10,13,15,15	0
2	SPD	D	501	10/10	0.96	0.10	1.40	11,16,20,21	0
2	SPD	B	501	10/10	0.95	0.10	1.31	8,11,16,17	0
3	MTA	B	401	20/20	0.97	0.08	0.49	9,13,16,17	0
3	MTA	C	401	20/20	0.97	0.07	-0.44	11,14,18,19	0
3	MTA	A	401	20/20	0.98	0.07	-0.59	13,16,18,19	0
3	MTA	D	401	20/20	0.97	0.07	-0.77	13,15,21,21	0

6.5 Other polymers [i](#)

There are no such residues in this entry.