



Full wwPDB X-ray Structure Validation Report ⓘ

Feb 1, 2016 – 01:14 AM GMT

PDB ID : 2C9E
Title : Peridinin-chlorophyll a protein, high-salt form
Authors : Schulte, T.; Sharples, F.P.; Hiller, R.G.; Hofmann, E.
Deposited on : 2005-12-09
Resolution : 2.10 Å(reported)

This is a Full wwPDB X-ray Structure Validation Report for a publicly released PDB entry.
We welcome your comments at validation@mail.wwpdb.org
A user guide is available at
<http://wwpdb.org/validation/2016/XrayValidationReportHelp>
with specific help available everywhere you see the ⓘ symbol.

The following versions of software and data (see [references ⓘ](#)) were used in the production of this report:

MolProbity : 4.02b-467
Mogul : 1.7 (RC4), CSD as536be (2015)
Xtriage (Phenix) : 1.9-1692
EDS : rb-20026688
Percentile statistics : 20151230.v01 (using entries in the PDB archive December 30th 2015)
Refmac : 5.8.0135
CCP4 : 6.5.0
Ideal geometry (proteins) : Engh & Huber (2001)
Ideal geometry (DNA, RNA) : Parkinson et al. (1996)
Validation Pipeline (wwPDB-VP) : trunk26865

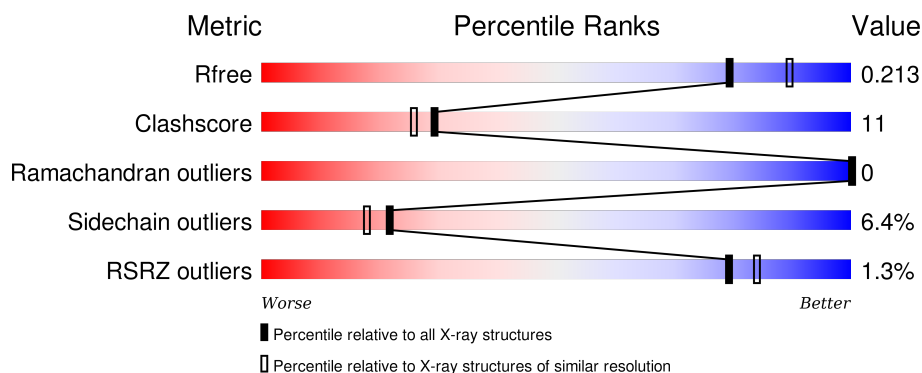
1 Overall quality at a glance

The following experimental techniques were used to determine the structure:

X-RAY DIFFRACTION

The reported resolution of this entry is 2.10 Å.

Percentile scores (ranging between 0-100) for global validation metrics of the entry are shown in the following graphic. The table shows the number of entries on which the scores are based.



Metric	Whole archive (#Entries)	Similar resolution (#Entries, resolution range(Å))
R_{free}	91344	3939 (2.10-2.10)
Clashscore	102246	4460 (2.10-2.10)
Ramachandran outliers	100387	4413 (2.10-2.10)
Sidechain outliers	100360	4414 (2.10-2.10)
RSRZ outliers	91569	3948 (2.10-2.10)

The table below summarises the geometric issues observed across the polymeric chains and their fit to the electron density. The red, orange, yellow and green segments on the lower bar indicate the fraction of residues that contain outliers for ≥ 3 , 2, 1 and 0 types of geometric quality criteria. A grey segment represents the fraction of residues that are not modelled. The numeric value for each fraction is indicated below the corresponding segment, with a dot representing fractions $\leq 5\%$. The upper red bar (where present) indicates the fraction of residues that have poor fit to the electron density. The numeric value is given above the bar.

Mol	Chain	Length	Quality of chain
1	A	327	

The following table lists non-polymeric compounds, carbohydrate monomers and non-standard residues in protein, DNA, RNA chains that are outliers for geometric or electron-density-fit criteria:

Mol	Type	Chain	Res	Chirality	Geometry	Clashes	Electron density
2	CLA	A	1327	X	-	-	-

Continued on next page...

Continued from previous page...

Mol	Type	Chain	Res	Chirality	Geometry	Clashes	Electron density
2	CLA	A	1328	X	-	-	-
4	DGD	A	1336	-	-	-	X

2 Entry composition [i](#)

There are 6 unique types of molecules in this entry. The entry contains 3188 atoms, of which 0 are hydrogens and 0 are deuteriums.

In the tables below, the ZeroOcc column contains the number of atoms modelled with zero occupancy, the AltConf column contains the number of residues with at least one atom in alternate conformation and the Trace column contains the number of residues modelled with at most 2 atoms.

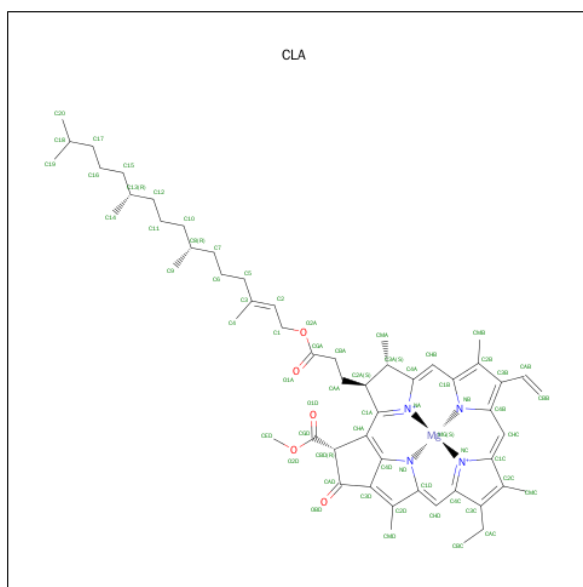
- Molecule 1 is a protein called PERIDININ-CHLOROPHYLL A PROTEIN.

Mol	Chain	Residues	Atoms					ZeroOcc	AltConf	Trace
			Total	C	N	O	S			
1	A	317	2360	1490	406	455	9	0	0	0

There are 5 discrepancies between the modelled and reference sequences:

Chain	Residue	Modelled	Actual	Comment	Reference
A	2	ALA	GLY	SEE REMARK 999	UNP O76183
A	128	ALA	GLY	SEE REMARK 999	UNP O76183
A	39	GLY	SER	SEE REMARK 999	UNP O76183
A	79	LYS	THR	SEE REMARK 999	UNP O76183
A	279	ASP	HIS	SEE REMARK 999	UNP O76183

- Molecule 2 is CHLOROPHYLL A (three-letter code: CLA) (formula: $C_{55}H_{72}MgN_4O_5$).



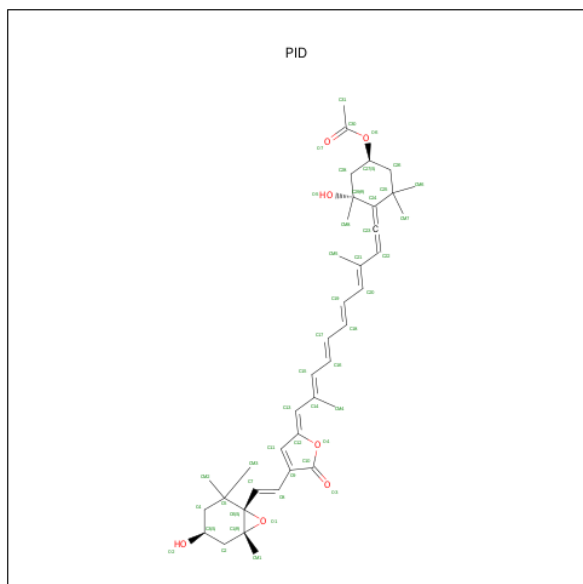
Mol	Chain	Residues	Atoms					ZeroOcc	AltConf
			Total	C	Mg	N	O		
2	A	1	65	55	1	4	5	0	0

Continued on next page...

Continued from previous page...

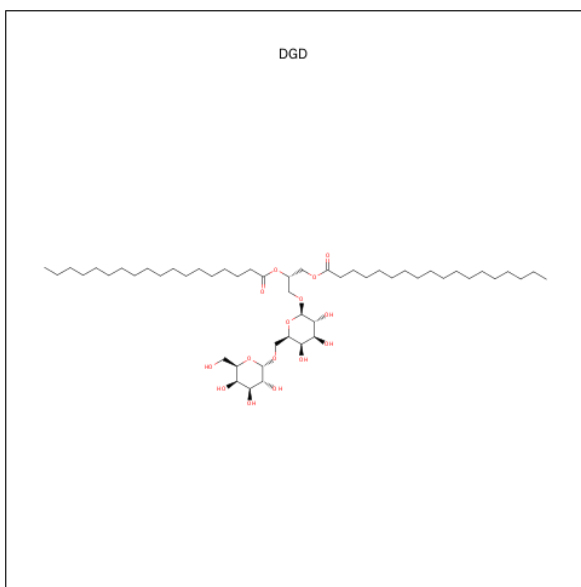
Mol	Chain	Residues	Atoms					ZeroOcc	AltConf
2	A	1	Total	C	Mg	N	O	0	0
			65	55	1	4	5		

- Molecule 3 is PERIDININ (three-letter code: PID) (formula: $C_{39}H_{50}O_7$).



Mol	Chain	Residues	Atoms			ZeroOcc	AltConf
3	A	1	Total	C	O	0	0
			46	39	7		
3	A	1	Total	C	O	0	0
			46	39	7		
3	A	1	Total	C	O	0	0
			46	39	7		
3	A	1	Total	C	O	0	0
			46	39	7		
3	A	1	Total	C	O	0	0
			46	39	7		
3	A	1	Total	C	O	0	0
			46	39	7		

- Molecule 4 is DIGALACTOSYL DIACYL GLYCEROL (DGDG) (three-letter code: DGD) (formula: $C_{51}H_{96}O_{15}$).



Mol	Chain	Residues	Atoms			ZeroOcc	AltConf
4	A	1	Total	C	O	0	0
			66	51	15		
4	A	1	Total	C	O	0	0
			66	51	15		

- Molecule 5 is MAGNESIUM ION (three-letter code: MG) (formula: Mg).

Mol	Chain	Residues	Atoms		ZeroOcc	AltConf
5	A	1	Total	Mg	0	0
			1	1		

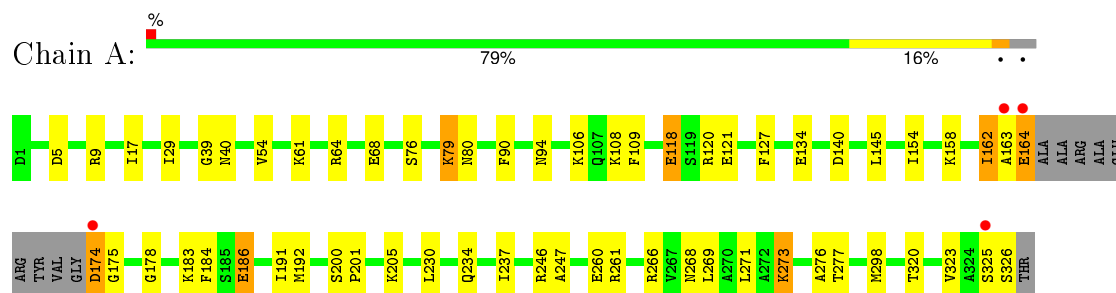
- Molecule 6 is water.

Mol	Chain	Residues	Atoms		ZeroOcc	AltConf
6	A	289	Total	O	0	0
			289	289		

3 Residue-property plots

These plots are drawn for all protein, RNA and DNA chains in the entry. The first graphic for a chain summarises the proportions of errors displayed in the second graphic. The second graphic shows the sequence view annotated by issues in geometry and electron density. Residues are color-coded according to the number of geometric quality criteria for which they contain at least one outlier: green = 0, yellow = 1, orange = 2 and red = 3 or more. A red dot above a residue indicates a poor fit to the electron density ($\text{RSRZ} > 2$). Stretches of 2 or more consecutive residues without any outlier are shown as a green connector. Residues present in the sample, but not in the model, are shown in grey.

- Molecule 1: PERIDININ-CHLOROPHYLL A PROTEIN



4 Data and refinement statistics

Property	Value	Source
Space group	P 1 21 1	Depositor
Cell constants a, b, c, α , β , γ	46.58Å 62.67Å 63.34Å 90.00° 100.89° 90.00°	Depositor
Resolution (Å)	36.95 – 2.10 36.95 – 2.10	Depositor EDS
% Data completeness (in resolution range)	97.4 (36.95-2.10) 97.6 (36.95-2.10)	Depositor EDS
R_{merge}	0.11	Depositor
R_{sym}	(Not available)	Depositor
$\langle I/\sigma(I) \rangle$ ¹	3.07 (at 2.10Å)	Xtriage
Refinement program	CNS 1.1	Depositor
R, R_{free}	0.174 , 0.219 0.169 , 0.213	Depositor DCC
R_{free} test set	1027 reflections (5.27%)	DCC
Wilson B-factor (Å ²)	25.6	Xtriage
Anisotropy	0.461	Xtriage
Bulk solvent k_{sol} (e/Å ³), B_{sol} (Å ²)	0.32 , 53.9	EDS
Estimated twinning fraction	No twinning to report.	Xtriage
L-test for twinning ²	$\langle L \rangle = 0.49$, $\langle L^2 \rangle = 0.32$	Xtriage
Outliers	0 of 20528 reflections	Xtriage
F_o, F_c correlation	0.96	EDS
Total number of atoms	3188	wwPDB-VP
Average B, all atoms (Å ²)	28.0	wwPDB-VP

Xtriage's analysis on translational NCS is as follows: *The largest off-origin peak in the Patterson function is 9.65% of the height of the origin peak. No significant pseudotranslation is detected.*

¹Intensities estimated from amplitudes.

²Theoretical values of $\langle |L| \rangle$, $\langle L^2 \rangle$ for acentric reflections are 0.5, 0.375 respectively for untwinned datasets, and 0.333, 0.2 for perfectly twinned datasets.

5 Model quality [i](#)

5.1 Standard geometry [i](#)

Bond lengths and bond angles in the following residue types are not validated in this section: MG, PID, CLA, DGD

The Z score for a bond length (or angle) is the number of standard deviations the observed value is removed from the expected value. A bond length (or angle) with $|Z| > 5$ is considered an outlier worth inspection. RMSZ is the root-mean-square of all Z scores of the bond lengths (or angles).

Mol	Chain	Bond lengths		Bond angles	
		RMSZ	$\# Z > 5$	RMSZ	$\# Z > 5$
1	A	0.82	0/2398	0.82	1/3239 (0.0%)

There are no bond length outliers.

All (1) bond angle outliers are listed below:

Mol	Chain	Res	Type	Atoms	Z	Observed($^{\circ}$)	Ideal($^{\circ}$)
1	A	175	GLY	N-CA-C	-7.28	94.89	113.10

There are no chirality outliers.

There are no planarity outliers.

5.2 Too-close contacts [i](#)

In the following table, the Non-H and H(model) columns list the number of non-hydrogen atoms and hydrogen atoms in the chain respectively. The H(added) column lists the number of hydrogen atoms added and optimized by MolProbity. The Clashes column lists the number of clashes within the asymmetric unit, whereas Symm-Clashes lists symmetry related clashes.

Mol	Chain	Non-H	H(model)	H(added)	Clashes	Symm-Clashes
1	A	2360	0	2382	47	0
2	A	130	0	144	8	0
3	A	276	0	300	20	0
4	A	132	0	192	19	0
5	A	1	0	0	0	0
6	A	289	0	0	4	0
All	All	3188	0	3018	67	0

The all-atom clashscore is defined as the number of clashes found per 1000 atoms (including hydrogen atoms). The all-atom clashscore for this structure is 11.

All (67) close contacts within the same asymmetric unit are listed below, sorted by their clash magnitude.

Atom-1	Atom-2	Interatomic distance (Å)	Clash overlap (Å)
1:A:163:ALA:O	1:A:164:GLU:HB2	1.74	0.86
1:A:246:ARG:NH1	1:A:266:ARG:HD2	1.90	0.85
1:A:320:THR:HG21	3:A:1335:PID:HM13	1.63	0.79
2:A:1328:CLA:HED3	4:A:1336:DGD:HBG2	1.63	0.79
1:A:192:MET:HB2	4:A:1336:DGD:HBW1	1.66	0.76
3:A:1330:PID:H22	4:A:1332:DGD:HAE2	1.68	0.75
1:A:320:THR:CG2	3:A:1335:PID:HM13	2.18	0.74
1:A:269:LEU:HG	1:A:273:LYS:HE2	1.70	0.73
1:A:268:ASN:ND2	3:A:1335:PID:H18	2.07	0.70
1:A:40:ASN:HB2	6:A:2050:HOH:O	1.93	0.68
1:A:79:LYS:HG2	1:A:80:ASN:N	2.08	0.67
1:A:162:ILE:HD13	1:A:163:ALA:N	2.12	0.65
1:A:79:LYS:HE2	1:A:80:ASN:HD22	1.64	0.62
2:A:1328:CLA:CED	4:A:1336:DGD:HBG2	2.29	0.61
1:A:273:LYS:O	1:A:277:THR:HG23	2.00	0.61
1:A:184:PHE:HZ	4:A:1336:DGD:HBS2	1.64	0.61
1:A:325:SER:O	1:A:326:SER:HB3	2.01	0.60
1:A:64:ARG:O	1:A:68:GLU:HG3	2.02	0.59
4:A:1336:DGD:HB31	4:A:1336:DGD:HBG1	1.84	0.59
1:A:200:SER:HB2	6:A:2184:HOH:O	2.02	0.59
1:A:76:SER:O	1:A:79:LYS:HD3	2.03	0.59
1:A:118:GLU:HG3	1:A:121:GLU:OE1	2.03	0.58
1:A:174:ASP:HA	1:A:178:GLY:HA3	1.86	0.57
1:A:246:ARG:HH12	1:A:266:ARG:HD2	1.69	0.56
1:A:94:ASN:OD1	3:A:1331:PID:H18	2.04	0.56
1:A:54:VAL:HG22	1:A:108:LYS:HB3	1.88	0.56
1:A:268:ASN:HD21	3:A:1335:PID:H18	1.69	0.56
1:A:154:ILE:CD1	1:A:158:LYS:HG3	2.35	0.56
2:A:1327:CLA:HHC	2:A:1327:CLA:HBB1	1.88	0.55
1:A:271:LEU:HD22	2:A:1328:CLA:HMD3	1.89	0.53
1:A:191:ILE:HG21	4:A:1336:DGD:HB91	1.93	0.51
1:A:5:ASP:HB3	1:A:9:ARG:NH2	2.26	0.50
2:A:1328:CLA:H171	4:A:1332:DGD:HAG2	1.93	0.50
3:A:1330:PID:H7	3:A:1330:PID:O3	2.11	0.50
1:A:260:GLU:HG3	6:A:2224:HOH:O	2.13	0.49
3:A:1331:PID:O5	3:A:1331:PID:HM72	2.12	0.49
1:A:234:GLN:OE1	1:A:237:ILE:HD12	2.13	0.48
3:A:1334:PID:H22	4:A:1336:DGD:HAF1	1.96	0.48
1:A:184:PHE:CZ	4:A:1336:DGD:HBS2	2.48	0.48
4:A:1332:DGD:HAS2	3:A:1334:PID:HM81	1.95	0.48

Continued on next page...

Continued from previous page...

Atom-1	Atom-2	Interatomic distance (Å)	Clash overlap (Å)
3:A:1334:PID:O5	3:A:1334:PID:HM72	2.14	0.47
1:A:39:GLY:HA3	6:A:2049:HOH:O	2.15	0.47
1:A:247:ALA:HB1	3:A:1335:PID:HM73	1.97	0.47
1:A:298:MET:HE3	4:A:1336:DGD:HE4	1.97	0.46
1:A:154:ILE:HD12	1:A:158:LYS:HG3	1.96	0.46
4:A:1332:DGD:HB91	4:A:1332:DGD:HBG2	1.96	0.46
1:A:174:ASP:HA	1:A:178:GLY:CA	2.45	0.46
1:A:186:GLU:HA	1:A:186:GLU:OE1	2.16	0.45
2:A:1328:CLA:HMB1	2:A:1328:CLA:HAB	1.75	0.45
3:A:1333:PID:HM43	4:A:1336:DGD:HBT2	1.98	0.45
4:A:1336:DGD:HB81	4:A:1336:DGD:HB52	1.77	0.45
2:A:1328:CLA:HHC	2:A:1328:CLA:HBB1	2.00	0.43
1:A:298:MET:HE3	4:A:1336:DGD:HE62	1.99	0.43
1:A:200:SER:HA	1:A:201:PRO:HD2	1.66	0.43
1:A:29:ILE:HG21	3:A:1329:PID:HM53	1.99	0.43
4:A:1332:DGD:HB82	4:A:1332:DGD:HB52	1.44	0.43
1:A:127:PHE:CE1	3:A:1329:PID:HM22	2.53	0.43
1:A:106:LYS:HG2	3:A:1331:PID:H42	2.01	0.42
1:A:320:THR:HG23	3:A:1335:PID:HM13	2.01	0.41
2:A:1328:CLA:HAC1	3:A:1334:PID:HM62	2.02	0.41
1:A:90:PHE:HZ	4:A:1332:DGD:HBF2	1.84	0.41
1:A:276:ALA:HB2	1:A:323:VAL:HG13	2.02	0.41
3:A:1335:PID:H7	3:A:1335:PID:O3	2.20	0.41
4:A:1336:DGD:HA92	4:A:1336:DGD:HAW2	1.71	0.41
1:A:17:ILE:HD11	1:A:134:GLU:HG2	2.03	0.40
1:A:109:PHE:CE1	3:A:1330:PID:C15	3.04	0.40
1:A:162:ILE:HD13	1:A:162:ILE:C	2.41	0.40

There are no symmetry-related clashes.

5.3 Torsion angles

5.3.1 Protein backbone

In the following table, the Percentiles column shows the percent Ramachandran outliers of the chain as a percentile score with respect to all X-ray entries followed by that with respect to entries of similar resolution.

The Analysed column shows the number of residues for which the backbone conformation was analysed, and the total number of residues.

Mol	Chain	Analysed	Favoured	Allowed	Outliers	Percentiles	
1	A	313/327 (96%)	308 (98%)	5 (2%)	0	100	100

There are no Ramachandran outliers to report.

5.3.2 Protein sidechains ⓘ

In the following table, the Percentiles column shows the percent sidechain outliers of the chain as a percentile score with respect to all X-ray entries followed by that with respect to entries of similar resolution.

The Analysed column shows the number of residues for which the sidechain conformation was analysed, and the total number of residues.

Mol	Chain	Analysed	Rotameric	Outliers	Percentiles	
1	A	233/239 (98%)	218 (94%)	15 (6%)	22	18

All (15) residues with a non-rotameric sidechain are listed below:

Mol	Chain	Res	Type
1	A	61	LYS
1	A	79	LYS
1	A	118	GLU
1	A	120	ARG
1	A	140	ASP
1	A	145	LEU
1	A	162	ILE
1	A	164	GLU
1	A	174	ASP
1	A	183	LYS
1	A	186	GLU
1	A	205	LYS
1	A	230	LEU
1	A	261	ARG
1	A	273	LYS

Some sidechains can be flipped to improve hydrogen bonding and reduce clashes. All (2) such sidechains are listed below:

Mol	Chain	Res	Type
1	A	107	GLN
1	A	268	ASN

5.3.3 RNA ⓘ

There are no RNA molecules in this entry.

5.4 Non-standard residues in protein, DNA, RNA chains ⓘ

There are no non-standard protein/DNA/RNA residues in this entry.

5.5 Carbohydrates ⓘ

There are no carbohydrates in this entry.

5.6 Ligand geometry ⓘ

Of 11 ligands modelled in this entry, 1 is monoatomic - leaving 10 for Mogul analysis.

In the following table, the Counts columns list the number of bonds (or angles) for which Mogul statistics could be retrieved, the number of bonds (or angles) that are observed in the model and the number of bonds (or angles) that are defined in the chemical component dictionary. The Link column lists molecule types, if any, to which the group is linked. The Z score for a bond length (or angle) is the number of standard deviations the observed value is removed from the expected value. A bond length (or angle) with $|Z| > 2$ is considered an outlier worth inspection. RMSZ is the root-mean-square of all Z scores of the bond lengths (or angles).

Mol	Type	Chain	Res	Link	Bond lengths			Bond angles		
					Counts	RMSZ	$\# Z > 2$	Counts	RMSZ	$\# Z > 2$
2	CLA	A	1327	6	55,73,73	1.11	6 (10%)	61,113,113	1.47	8 (13%)
2	CLA	A	1328	6	55,73,73	1.59	11 (20%)	61,113,113	1.49	7 (11%)
3	PID	A	1329	-	42,49,49	2.09	9 (21%)	49,76,76	1.64	10 (20%)
3	PID	A	1330	-	42,49,49	2.10	9 (21%)	49,76,76	1.45	8 (16%)
3	PID	A	1331	-	42,49,49	2.08	9 (21%)	49,76,76	1.49	6 (12%)
4	DGD	A	1332	-	67,67,67	0.78	2 (2%)	81,81,81	1.25	6 (7%)
3	PID	A	1333	-	42,49,49	2.09	9 (21%)	49,76,76	1.72	12 (24%)
3	PID	A	1334	-	42,49,49	2.08	9 (21%)	49,76,76	1.48	7 (14%)
3	PID	A	1335	-	42,49,49	2.08	9 (21%)	49,76,76	1.65	8 (16%)
4	DGD	A	1336	-	67,67,67	0.91	2 (2%)	81,81,81	1.06	7 (8%)

In the following table, the Chirals column lists the number of chiral outliers, the number of chiral centers analysed, the number of these observed in the model and the number defined in the chemical component dictionary. Similar counts are reported in the Torsion and Rings columns. '-' means no outliers of that kind were identified.

Mol	Type	Chain	Res	Link	Chirals	Torsions	Rings
2	CLA	A	1327	6	1/1/20/25	0/37/135/135	0/0/9/9
2	CLA	A	1328	6	2/2/20/25	0/37/135/135	0/0/9/9
3	PID	A	1329	-	-	0/24/93/93	0/3/4/4
3	PID	A	1330	-	-	0/24/93/93	0/3/4/4
3	PID	A	1331	-	-	0/24/93/93	0/3/4/4
4	DGD	A	1332	-	-	0/55/95/95	0/2/2/2
3	PID	A	1333	-	-	0/24/93/93	0/3/4/4
3	PID	A	1334	-	-	0/24/93/93	0/3/4/4
3	PID	A	1335	-	-	0/24/93/93	0/3/4/4
4	DGD	A	1336	-	-	0/55/95/95	0/2/2/2

All (75) bond length outliers are listed below:

Mol	Chain	Res	Type	Atoms	Z	Observed(Å)	Ideal(Å)
3	A	1333	PID	C11-C12	-7.15	1.33	1.44
3	A	1329	PID	C11-C12	-7.11	1.33	1.44
3	A	1334	PID	C11-C12	-7.06	1.34	1.44
3	A	1330	PID	C11-C12	-7.03	1.34	1.44
3	A	1335	PID	C11-C12	-6.97	1.34	1.44
3	A	1331	PID	C11-C12	-6.92	1.34	1.44
3	A	1330	PID	C6-C7	-6.43	1.40	1.50
3	A	1335	PID	C6-C7	-6.32	1.40	1.50
3	A	1334	PID	C6-C7	-6.26	1.40	1.50
3	A	1329	PID	C6-C7	-6.25	1.40	1.50
3	A	1333	PID	C6-C7	-6.24	1.40	1.50
3	A	1331	PID	C6-C7	-6.24	1.40	1.50
2	A	1328	CLA	O2D-CED	-5.18	1.32	1.45
2	A	1328	CLA	C1-C2	-2.84	1.39	1.49
3	A	1333	PID	C13-C14	-2.80	1.40	1.46
3	A	1335	PID	C13-C14	-2.79	1.40	1.46
3	A	1331	PID	C13-C14	-2.75	1.40	1.46
3	A	1333	PID	C9-C10	-2.75	1.39	1.47
3	A	1334	PID	C13-C14	-2.74	1.40	1.46
3	A	1330	PID	C13-C14	-2.73	1.40	1.46
3	A	1330	PID	C9-C10	-2.73	1.39	1.47
3	A	1331	PID	C9-C10	-2.72	1.39	1.47
3	A	1329	PID	C13-C14	-2.71	1.40	1.46
3	A	1330	PID	C8-C9	-2.68	1.40	1.46
3	A	1335	PID	C9-C10	-2.66	1.39	1.47
3	A	1334	PID	C9-C10	-2.66	1.39	1.47
3	A	1329	PID	C9-C10	-2.60	1.39	1.47
3	A	1333	PID	C8-C9	-2.59	1.40	1.46
4	A	1332	DGD	O1G-C1G	-2.58	1.39	1.45

Continued on next page...

Continued from previous page...

Mol	Chain	Res	Type	Atoms	Z	Observed(Å)	Ideal(Å)
3	A	1335	PID	C8-C9	-2.56	1.40	1.46
3	A	1331	PID	C8-C9	-2.55	1.40	1.46
3	A	1329	PID	C8-C9	-2.55	1.40	1.46
3	A	1334	PID	C8-C9	-2.49	1.40	1.46
2	A	1327	CLA	O2D-CED	-2.48	1.39	1.45
2	A	1327	CLA	C3B-C2B	-2.37	1.37	1.40
2	A	1328	CLA	C3D-C2D	-2.31	1.34	1.40
3	A	1333	PID	C11-C9	-2.23	1.33	1.39
3	A	1335	PID	C11-C9	-2.22	1.33	1.39
3	A	1334	PID	C11-C9	-2.22	1.33	1.39
3	A	1330	PID	C11-C9	-2.18	1.33	1.39
3	A	1331	PID	C11-C9	-2.17	1.33	1.39
3	A	1329	PID	C11-C9	-2.10	1.34	1.39
2	A	1328	CLA	C3B-C2B	-2.08	1.37	1.40
2	A	1327	CLA	CHC-C1C	2.08	1.41	1.35
4	A	1332	DGD	O5D-C1E	2.29	1.44	1.40
2	A	1327	CLA	CMA-C3A	2.31	1.58	1.53
4	A	1336	DGD	O5D-C1E	2.31	1.44	1.40
2	A	1327	CLA	C2-C3	2.38	1.37	1.33
2	A	1328	CLA	CHC-C1C	2.40	1.42	1.35
2	A	1328	CLA	CMD-C2D	2.74	1.57	1.51
4	A	1336	DGD	O6D-C1D	2.74	1.48	1.41
2	A	1328	CLA	CMB-C2B	3.03	1.57	1.51
2	A	1328	CLA	C4-C3	3.06	1.58	1.50
3	A	1334	PID	C20-C21	3.08	1.39	1.35
3	A	1334	PID	C15-C14	3.18	1.40	1.35
3	A	1335	PID	C20-C21	3.23	1.40	1.35
3	A	1331	PID	C20-C21	3.23	1.40	1.35
3	A	1333	PID	C20-C21	3.25	1.40	1.35
3	A	1335	PID	C15-C14	3.25	1.40	1.35
3	A	1333	PID	C15-C14	3.26	1.40	1.35
3	A	1329	PID	C20-C21	3.27	1.40	1.35
3	A	1330	PID	C20-C21	3.28	1.40	1.35
2	A	1328	CLA	C5-C3	3.30	1.58	1.51
2	A	1327	CLA	CMC-C2C	3.34	1.57	1.50
3	A	1329	PID	C15-C14	3.34	1.40	1.35
3	A	1331	PID	C15-C14	3.35	1.40	1.35
2	A	1328	CLA	C2-C3	3.36	1.39	1.33
3	A	1330	PID	C15-C14	3.39	1.40	1.35
3	A	1330	PID	C8-C7	3.82	1.39	1.32
3	A	1333	PID	C8-C7	3.86	1.40	1.32
3	A	1329	PID	C8-C7	3.91	1.40	1.32

Continued on next page...

Continued from previous page...

Mol	Chain	Res	Type	Atoms	Z	Observed(Å)	Ideal(Å)
3	A	1334	PID	C8-C7	3.94	1.40	1.32
3	A	1331	PID	C8-C7	3.97	1.40	1.32
3	A	1335	PID	C8-C7	3.97	1.40	1.32
2	A	1328	CLA	O2A-CGA	4.78	1.47	1.33

All (79) bond angle outliers are listed below:

Mol	Chain	Res	Type	Atoms	Z	Observed(°)	Ideal(°)
3	A	1335	PID	C12-O4-C10	-4.54	104.83	107.68
4	A	1332	DGD	O3G-C3G-C2G	-4.30	100.76	110.99
3	A	1331	PID	C12-O4-C10	-3.96	105.20	107.68
4	A	1332	DGD	O6E-C5E-C4E	-3.95	102.26	109.68
3	A	1334	PID	C12-O4-C10	-3.89	105.24	107.68
3	A	1333	PID	C12-O4-C10	-3.81	105.29	107.68
3	A	1333	PID	CM7-C25-C24	-3.53	107.31	110.48
2	A	1328	CLA	OBD-CAD-CBD	-3.41	120.80	125.94
2	A	1328	CLA	O1D-CGD-CBD	-3.36	119.81	124.62
3	A	1329	PID	CM7-C25-C24	-3.31	107.50	110.48
4	A	1336	DGD	C1E-O6E-C5E	-3.26	107.42	113.75
4	A	1336	DGD	C1D-O6D-C5D	-3.19	107.56	113.75
4	A	1332	DGD	O6D-C5D-C6D	-3.15	100.18	106.61
2	A	1327	CLA	O1D-CGD-CBD	-3.15	120.11	124.62
4	A	1332	DGD	O1G-C1A-O1A	-3.14	115.39	123.49
4	A	1332	DGD	C1E-O6E-C5E	-2.87	108.17	113.75
2	A	1328	CLA	C3B-CAB-CBB	-2.85	120.49	126.32
3	A	1330	PID	C12-O4-C10	-2.83	105.91	107.68
3	A	1329	PID	CM8-C29-C28	-2.66	107.66	110.97
3	A	1329	PID	C12-O4-C10	-2.64	106.02	107.68
3	A	1329	PID	C1-C2-C3	-2.58	108.84	113.03
3	A	1335	PID	O3-C10-C9	-2.56	125.92	130.70
3	A	1335	PID	C1-C2-C3	-2.52	108.93	113.03
3	A	1331	PID	O3-C10-C9	-2.51	126.00	130.70
2	A	1328	CLA	C2C-C1C-NC	-2.35	108.49	110.24
2	A	1327	CLA	OBD-CAD-CBD	-2.35	122.40	125.94
2	A	1327	CLA	C3B-CAB-CBB	-2.32	121.56	126.32
3	A	1334	PID	O3-C10-C9	-2.31	126.38	130.70
3	A	1333	PID	CM2-C5-C4	-2.25	104.92	108.94
4	A	1336	DGD	O2G-C1B-O1B	-2.18	117.82	123.67
4	A	1336	DGD	O3G-C1D-C2D	-2.17	105.30	108.04
3	A	1335	PID	C5-C4-C3	-2.16	111.38	115.02
3	A	1333	PID	O3-C10-C9	-2.13	126.71	130.70
3	A	1330	PID	O3-C10-C9	-2.13	126.72	130.70

Continued on next page...

Continued from previous page...

Mol	Chain	Res	Type	Atoms	Z	Observed(°)	Ideal(°)
4	A	1336	DGD	O6D-C1D-O3G	-2.07	105.08	110.05
3	A	1334	PID	CM2-C5-C4	-2.06	105.25	108.94
3	A	1333	PID	O2-C3-C4	-2.03	105.75	109.91
3	A	1330	PID	C1-C2-C3	-2.03	109.73	113.03
4	A	1336	DGD	C6D-O5D-C1E	-2.01	109.60	113.82
2	A	1327	CLA	CAC-C3C-C4C	2.12	127.91	124.83
3	A	1329	PID	O6-C27-C28	2.16	112.92	107.61
3	A	1333	PID	O6-C27-C26	2.35	113.39	107.61
3	A	1334	PID	O4-C10-O3	2.41	124.14	120.12
3	A	1330	PID	O1-C1-CM1	2.48	117.88	114.99
3	A	1333	PID	O4-C10-O3	2.55	124.37	120.12
3	A	1331	PID	O4-C10-O3	2.66	124.56	120.12
4	A	1332	DGD	O1G-C1A-C2A	2.74	120.24	111.90
3	A	1331	PID	C6-O1-C1	2.75	64.49	61.25
4	A	1336	DGD	O2G-C1B-C2B	2.76	117.52	111.53
3	A	1333	PID	C6-O1-C1	2.77	64.52	61.25
3	A	1334	PID	C6-O1-C1	2.81	64.56	61.25
3	A	1329	PID	O4-C10-O3	2.83	124.83	120.12
3	A	1335	PID	C6-O1-C1	2.86	64.62	61.25
3	A	1330	PID	C6-O1-C1	2.87	64.63	61.25
3	A	1335	PID	O4-C10-O3	2.89	124.94	120.12
3	A	1329	PID	C6-O1-C1	3.00	64.78	61.25
3	A	1334	PID	O6-C30-C31	3.00	116.76	111.10
2	A	1327	CLA	CED-O2D-CGD	3.02	123.08	115.99
3	A	1330	PID	O4-C10-O3	3.17	125.40	120.12
3	A	1333	PID	C26-C25-C24	3.20	112.25	109.24
3	A	1333	PID	O1-C1-CM1	3.21	118.74	114.99
2	A	1327	CLA	O2A-CGA-CBA	3.22	121.70	111.90
2	A	1328	CLA	C4A-NA-C1A	3.32	110.65	106.36
2	A	1327	CLA	C4A-NA-C1A	3.35	110.69	106.36
2	A	1328	CLA	O2A-CGA-CBA	3.39	122.24	111.90
3	A	1331	PID	O4-C12-C11	3.41	109.61	107.50
3	A	1330	PID	O6-C30-C31	3.53	117.76	111.10
3	A	1335	PID	O6-C30-C31	3.61	117.92	111.10
3	A	1329	PID	O4-C12-C11	3.62	109.74	107.50
3	A	1329	PID	O6-C30-C31	3.66	118.00	111.10
3	A	1329	PID	C26-C25-C24	3.68	112.70	109.24
3	A	1334	PID	O4-C12-C11	3.82	109.86	107.50
3	A	1333	PID	O4-C12-C11	3.86	109.89	107.50
3	A	1333	PID	O6-C30-C31	4.03	118.71	111.10
3	A	1331	PID	O6-C30-C31	4.19	119.00	111.10
3	A	1330	PID	O4-C12-C11	4.19	110.09	107.50

Continued on next page...

Continued from previous page...

Mol	Chain	Res	Type	Atoms	Z	Observed(°)	Ideal(°)
3	A	1335	PID	O4-C12-C11	4.86	110.51	107.50
2	A	1327	CLA	O2D-CGD-CBD	5.20	118.43	111.30
2	A	1328	CLA	O2D-CGD-CBD	5.85	119.33	111.30

All (3) chirality outliers are listed below:

Mol	Chain	Res	Type	Atom
2	A	1327	CLA	NC
2	A	1328	CLA	NC
2	A	1328	CLA	NA

There are no torsion outliers.

There are no ring outliers.

10 monomers are involved in 39 short contacts:

Mol	Chain	Res	Type	Clashes	Symm-Clashes
2	A	1327	CLA	1	0
2	A	1328	CLA	7	0
3	A	1329	PID	2	0
3	A	1330	PID	3	0
3	A	1331	PID	3	0
4	A	1332	DGD	6	0
3	A	1333	PID	1	0
3	A	1334	PID	4	0
3	A	1335	PID	7	0
4	A	1336	DGD	13	0

5.7 Other polymers [i](#)

There are no such residues in this entry.

5.8 Polymer linkage issues [i](#)

There are no chain breaks in this entry.

6 Fit of model and data [i](#)

6.1 Protein, DNA and RNA chains [i](#)

In the following table, the column labelled ‘#RSRZ> 2’ contains the number (and percentage) of RSRZ outliers, followed by percent RSRZ outliers for the chain as percentile scores relative to all X-ray entries and entries of similar resolution. The OWAB column contains the minimum, median, 95th percentile and maximum values of the occupancy-weighted average B-factor per residue. The column labelled ‘Q< 0.9’ lists the number of (and percentage) of residues with an average occupancy less than 0.9.

Mol	Chain	Analysed	<RSRZ>	#RSRZ>2	OWAB(Å ²)	Q<0.9
1	A	317/327 (96%)	-0.25	4 (1%) 79 84	15, 27, 41, 70	0

All (4) RSRZ outliers are listed below:

Mol	Chain	Res	Type	RSRZ
1	A	163	ALA	6.2
1	A	174	ASP	4.1
1	A	325	SER	2.1
1	A	164	GLU	2.1

6.2 Non-standard residues in protein, DNA, RNA chains [i](#)

There are no non-standard protein/DNA/RNA residues in this entry.

6.3 Carbohydrates [i](#)

There are no carbohydrates in this entry.

6.4 Ligands [i](#)

In the following table, the Atoms column lists the number of modelled atoms in the group and the number defined in the chemical component dictionary. LLDF column lists the quality of electron density of the group with respect to its neighbouring residues in protein, DNA or RNA chains. The B-factors column lists the minimum, median, 95th percentile and maximum values of B factors of atoms in the group. The column labelled ‘Q< 0.9’ lists the number of atoms with occupancy less than 0.9.

Mol	Type	Chain	Res	Atoms	RSCC	RSR	LLDF	B-factors(Å ²)	Q<0.9
4	DGD	A	1336	66/66	0.90	0.13	2.08	20,28,38,42	0

Continued on next page...

Continued from previous page...

Mol	Type	Chain	Res	Atoms	RSCC	RSR	LLDF	B-factors(\AA^2)	Q<0.9
4	DGD	A	1332	66/66	0.86	0.15	1.80	21,27,44,51	0
2	CLA	A	1328	65/65	0.96	0.12	1.06	11,20,25,26	0
2	CLA	A	1327	65/65	0.96	0.13	1.00	15,19,22,24	0
3	PID	A	1333	46/46	0.92	0.13	0.77	12,21,30,33	0
3	PID	A	1330	46/46	0.95	0.12	0.62	13,21,27,29	0
3	PID	A	1334	46/46	0.93	0.12	0.24	18,25,32,33	0
3	PID	A	1335	46/46	0.93	0.12	0.17	13,21,28,32	0
3	PID	A	1329	46/46	0.94	0.10	0.16	14,21,26,26	0
3	PID	A	1331	46/46	0.96	0.08	-0.21	16,21,24,27	0
5	MG	A	1337	1/1	0.97	0.05	-	27,27,27,27	0

6.5 Other polymers [i](#)

There are no such residues in this entry.