



Full wwPDB X-ray Structure Validation Report ⓘ

Mar 17, 2016 – 03:18 PM EDT

PDB ID : 4CAW
Title : Crystal structure of *Aspergillus fumigatus* N-myristoyl transferase in complex with myristoyl CoA and a pyrazole sulphonamide ligand
Authors : Robinson, D.A.; Fang, W.; Raimi, O.G.; Blair, D.E.; Harrison, J.; Ruda, G.F.; Lockhart, D.E.A.; Torrie, L.S.; Wyatt, P.G.; Gilbert, I.H.; Van Aalten, D.M.F.
Deposited on : 2013-10-09
Resolution : 2.50 Å(reported)

This is a Full wwPDB X-ray Structure Validation Report for a publicly released PDB entry.
We welcome your comments at validation@mail.wwpdb.org
A user guide is available at
<http://wwpdb.org/validation/2016/XrayValidationReportHelp>
with specific help available everywhere you see the ⓘ symbol.

The following versions of software and data (see [references ⓘ](#)) were used in the production of this report:

MolProbity : 4.02b-467
Mogul : 1.7.1 (RC1), CSD as537be (2016)
Xtriage (Phenix) : 1.9-1692
EDS : rb-20027107
Percentile statistics : 20151230.v01 (using entries in the PDB archive December 30th 2015)
Refmac : 5.8.0122
CCP4 : 6.5.0
Ideal geometry (proteins) : Engh & Huber (2001)
Ideal geometry (DNA, RNA) : Parkinson et al. (1996)
Validation Pipeline (wwPDB-VP) : rb-20027107

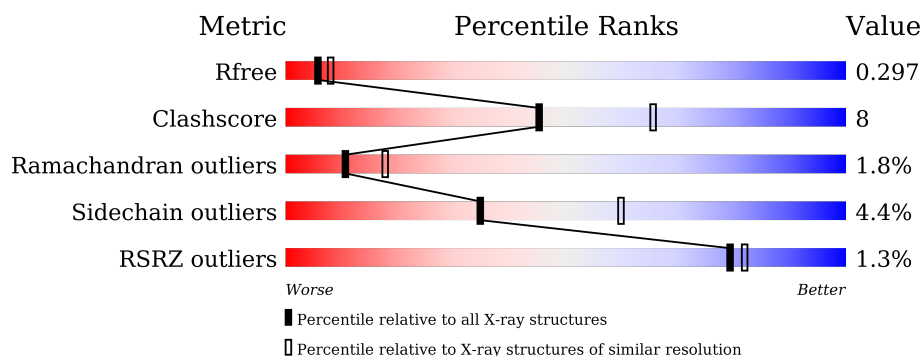
1 Overall quality at a glance

The following experimental techniques were used to determine the structure:

X-RAY DIFFRACTION

The reported resolution of this entry is 2.50 Å.

Percentile scores (ranging between 0-100) for global validation metrics of the entry are shown in the following graphic. The table shows the number of entries on which the scores are based.



Metric	Whole archive (#Entries)	Similar resolution (#Entries, resolution range(Å))
R_{free}	91344	3553 (2.50-2.50)
Clashscore	102246	4242 (2.50-2.50)
Ramachandran outliers	100387	4156 (2.50-2.50)
Sidechain outliers	100360	4158 (2.50-2.50)
RSRZ outliers	91569	3562 (2.50-2.50)

The table below summarises the geometric issues observed across the polymeric chains and their fit to the electron density. The red, orange, yellow and green segments on the lower bar indicate the fraction of residues that contain outliers for ≥ 3 , 2, 1 and 0 types of geometric quality criteria. A grey segment represents the fraction of residues that are not modelled. The numeric value for each fraction is indicated below the corresponding segment, with a dot representing fractions $\leq 5\%$. The upper red bar (where present) indicates the fraction of residues that have poor fit to the electron density. The numeric value is given above the bar.

Mol	Chain	Length	Quality of chain
1	A	411	<div> <div></div> <div>77%</div> <div>15%</div> <div>5%</div> </div>

2 Entry composition [i](#)

There are 4 unique types of molecules in this entry. The entry contains 3362 atoms, of which 0 are hydrogens and 0 are deuteriums.

In the tables below, the ZeroOcc column contains the number of atoms modelled with zero occupancy, the AltConf column contains the number of residues with at least one atom in alternate conformation and the Trace column contains the number of residues modelled with at most 2 atoms.

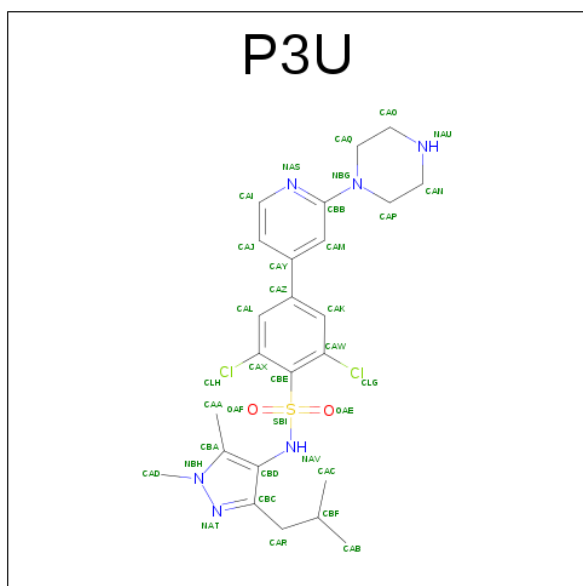
- Molecule 1 is a protein called GLYCYLPEPTIDE N-TETRADECANOYLTRANSFERASE.

Mol	Chain	Residues	Atoms					ZeroOcc	AltConf	Trace
1	A	390	Total	C	N	O	S	0	0	0
			3171	2052	539	568	12			

There are 4 discrepancies between the modelled and reference sequences:

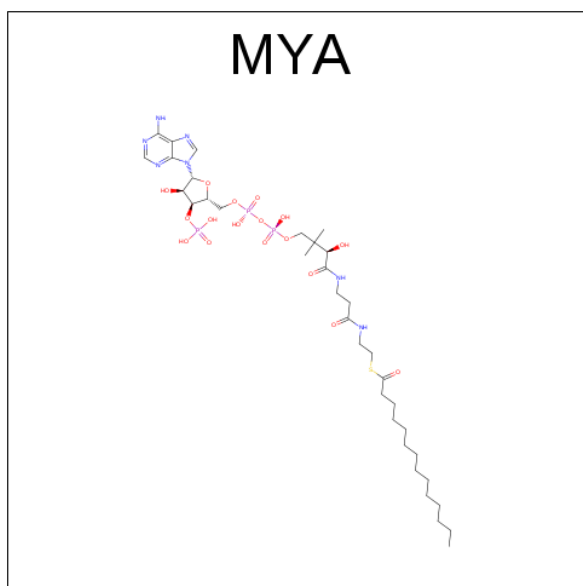
Chain	Residue	Modelled	Actual	Comment	Reference
A	82	GLY	-	EXPRESSION TAG	UNP Q9UVX3
A	83	PRO	-	EXPRESSION TAG	UNP Q9UVX3
A	84	ARG	-	EXPRESSION TAG	UNP Q9UVX3
A	85	SER	-	EXPRESSION TAG	UNP Q9UVX3

- Molecule 2 is 2,6-DICHLORO-4-(2-PIPERAZIN-1-YLPYRIDIN-4-YL)-N-(1,5-DIMETHYL,3-ISOBUTYL-1H-PYRAZOL-4-YL)BENZENESULFONAMIDE (three-letter code: P3U) (formula: C₂₄H₃₀Cl₂N₆O₂S).



Mol	Chain	Residues	Atoms					ZeroOcc	AltConf
2	A	1	Total	C	Cl	N	O	S	
			35	24	2	6	2	1	
								0	0

- Molecule 3 is TETRADECANOYL-COA (three-letter code: MYA) (formula: $C_{35}H_{62}N_7O_{17}P_3S$).



Mol	Chain	Residues	Atoms					ZeroOcc	AltConf
3	A	1	Total	C	N	O	P	S	
			63	35	7	17	3	1	
								0	0

- Molecule 4 is water.

Mol	Chain	Residues	Atoms		ZeroOcc	AltConf
4	A	93	Total	O		
			93	93	0	0

4 Data and refinement statistics

Property	Value	Source
Space group	P 21 21 21	Depositor
Cell constants a, b, c, α , β , γ	50.87Å 57.83Å 147.51Å 90.00° 90.00° 90.00°	Depositor
Resolution (Å)	73.00 – 2.50 38.20 – 2.50	Depositor EDS
% Data completeness (in resolution range)	85.5 (73.00-2.50) 85.6 (38.20-2.50)	Depositor EDS
R_{merge}	0.12	Depositor
R_{sym}	(Not available)	Depositor
$\langle I/\sigma(I) \rangle$ ¹	2.70 (at 2.51Å)	Xtriage
Refinement program	REFMAC 5.5.0109	Depositor
R, R_{free}	0.240 , 0.299 0.238 , 0.297	Depositor DCC
R_{free} test set	960 reflections (7.68%)	DCC
Wilson B-factor (Å ²)	27.4	Xtriage
Anisotropy	0.341	Xtriage
Bulk solvent k_{sol} (e/Å ³), B_{sol} (Å ²)	0.30 , -4.9	EDS
Estimated twinning fraction	No twinning to report.	Xtriage
L-test for twinning ²	$\langle L \rangle = 0.44$, $\langle L^2 \rangle = 0.27$	Xtriage
Outliers	0 of 13452 reflections	Xtriage
F_o, F_c correlation	0.89	EDS
Total number of atoms	3362	wwPDB-VP
Average B, all atoms (Å ²)	22.0	wwPDB-VP

Xtriage's analysis on translational NCS is as follows: *The largest off-origin peak in the Patterson function is 5.44% of the height of the origin peak. No significant pseudotranslation is detected.*

¹Intensities estimated from amplitudes.

²Theoretical values of $\langle |L| \rangle$, $\langle L^2 \rangle$ for acentric reflections are 0.5, 0.375 respectively for untwinned datasets, and 0.333, 0.2 for perfectly twinned datasets.

5 Model quality [i](#)

5.1 Standard geometry [i](#)

Bond lengths and bond angles in the following residue types are not validated in this section: MYA, P3U

The Z score for a bond length (or angle) is the number of standard deviations the observed value is removed from the expected value. A bond length (or angle) with $|Z| > 5$ is considered an outlier worth inspection. RMSZ is the root-mean-square of all Z scores of the bond lengths (or angles).

Mol	Chain	Bond lengths		Bond angles	
		RMSZ	$\# Z > 5$	RMSZ	$\# Z > 5$
1	A	0.34	0/3256	0.53	1/4422 (0.0%)

There are no bond length outliers.

All (1) bond angle outliers are listed below:

Mol	Chain	Res	Type	Atoms	Z	Observed($^{\circ}$)	Ideal($^{\circ}$)
1	A	384	PRO	N-CA-CB	6.78	111.44	103.30

There are no chirality outliers.

There are no planarity outliers.

5.2 Too-close contacts [i](#)

In the following table, the Non-H and H(model) columns list the number of non-hydrogen atoms and hydrogen atoms in the chain respectively. The H(added) column lists the number of hydrogen atoms added and optimized by MolProbity. The Clashes column lists the number of clashes within the asymmetric unit, whereas Symm-Clashes lists symmetry related clashes.

Mol	Chain	Non-H	H(model)	H(added)	Clashes	Symm-Clashes
1	A	3171	0	3158	49	0
2	A	35	0	30	5	0
3	A	63	0	58	1	0
4	A	93	0	0	2	0
All	All	3362	0	3246	51	0

The all-atom clashscore is defined as the number of clashes found per 1000 atoms (including hydrogen atoms). The all-atom clashscore for this structure is 8.

All (51) close contacts within the same asymmetric unit are listed below, sorted by their clash

magnitude.

Atom-1	Atom-2	Interatomic distance (Å)	Clash overlap (Å)
1:A:407:MET:N	1:A:408:LYS:HA	1.71	1.02
1:A:150:ASP:HB3	2:A:1493:P3U:HAA2	1.54	0.88
1:A:223:SER:HA	1:A:225:ARG:H	1.50	0.77
1:A:359:VAL:HA	1:A:360:GLU:HB2	1.67	0.76
1:A:249:THR:HG22	2:A:1493:P3U:HAN2	1.67	0.74
1:A:153:ALA:HA	1:A:154:MET:HB2	1.69	0.73
1:A:360:GLU:H	1:A:367:ILE:HA	1.54	0.73
1:A:185:LYS:HE2	4:A:2034:HOH:O	1.93	0.67
1:A:249:THR:HG23	1:A:457:LEU:HD11	1.81	0.62
1:A:361:ASP:HB3	1:A:364:THR:OG1	2.00	0.62
1:A:347:GLU:HB3	1:A:348:THR:OG1	2.00	0.61
1:A:480:ASP:HB3	1:A:483:ARG:HB2	1.86	0.57
1:A:254:LEU:HB3	1:A:255:PRO:HD2	1.86	0.56
2:A:1493:P3U:HAA3	2:A:1493:P3U:CAW	2.36	0.55
1:A:170:SER:HB2	1:A:171:PRO:HD2	1.88	0.55
1:A:364:THR:HB	1:A:366:LYS:H	1.73	0.54
1:A:456:GLN:HE22	1:A:477:ASN:HD21	1.57	0.53
1:A:306:ARG:NE	1:A:360:GLU:HG3	2.23	0.53
1:A:348:THR:HG22	1:A:349:VAL:HG23	1.90	0.53
1:A:150:ASP:HB3	2:A:1493:P3U:CAA	2.35	0.51
1:A:347:GLU:H	1:A:348:THR:HB	1.76	0.51
1:A:158:ARG:HH11	1:A:379:THR:CG2	2.25	0.50
1:A:359:VAL:CA	1:A:360:GLU:HB2	2.38	0.50
1:A:358:VAL:HG12	1:A:370:PHE:HB2	1.94	0.49
1:A:158:ARG:HB2	1:A:379:THR:HG23	1.95	0.48
1:A:306:ARG:HE	1:A:360:GLU:HG3	1.78	0.48
1:A:359:VAL:HA	1:A:360:GLU:CB	2.42	0.48
1:A:153:ALA:HA	1:A:155:PHE:H	1.79	0.48
1:A:347:GLU:HB3	1:A:348:THR:CB	2.44	0.47
1:A:418:MET:O	1:A:422:LEU:HG	2.14	0.47
2:A:1493:P3U:CLH	2:A:1493:P3U:OAF	2.70	0.47
1:A:282:PRO:HA	1:A:283:ALA:HA	1.62	0.46
1:A:158:ARG:HH11	1:A:379:THR:HG22	1.81	0.46
1:A:223:SER:HA	1:A:225:ARG:N	2.26	0.45
1:A:215:LEU:HD12	3:A:1494:MYA:H4MA	1.98	0.44
1:A:263:TYR:HB3	1:A:265:HIS:CE1	2.53	0.44
1:A:249:THR:CG2	1:A:457:LEU:HD11	2.46	0.44
1:A:153:ALA:CA	1:A:154:MET:HB2	2.43	0.44
1:A:339:ASP:O	1:A:343:VAL:HG13	2.18	0.43
1:A:221:LEU:HA	1:A:224:LYS:HE2	2.00	0.43
1:A:254:LEU:HB3	1:A:255:PRO:CD	2.49	0.43

Continued on next page...

Continued from previous page...

Atom-1	Atom-2	Interatomic distance (Å)	Clash overlap (Å)
1:A:376:LEU:HB3	1:A:393:TYR:CE1	2.54	0.42
1:A:205:GLN:HG2	4:A:2045:HOH:O	2.19	0.42
1:A:420:ASP:HA	1:A:423:ILE:HD12	2.02	0.42
1:A:170:SER:HB2	1:A:171:PRO:CD	2.49	0.42
1:A:111:LYS:HB2	1:A:111:LYS:HE3	1.93	0.42
1:A:441:ASN:HA	1:A:444:PHE:CE2	2.56	0.41
1:A:246:ALA:HB3	1:A:462:TYR:HB3	2.02	0.41
1:A:414:LEU:HD12	1:A:443:LEU:HD12	2.03	0.41
1:A:195:GLY:HA2	1:A:211:GLU:O	2.22	0.40
1:A:286:THR:HG23	1:A:289:ARG:H	1.86	0.40

There are no symmetry-related clashes.

5.3 Torsion angles [i](#)

5.3.1 Protein backbone [i](#)

In the following table, the Percentiles column shows the percent Ramachandran outliers of the chain as a percentile score with respect to all X-ray entries followed by that with respect to entries of similar resolution.

The Analysed column shows the number of residues for which the backbone conformation was analysed, and the total number of residues.

Mol	Chain	Analysed	Favoured	Allowed	Outliers	Percentiles
1	A	386/411 (94%)	353 (92%)	26 (7%)	7 (2%)	11 18

All (7) Ramachandran outliers are listed below:

Mol	Chain	Res	Type
1	A	348	THR
1	A	384	PRO
1	A	153	ALA
1	A	223	SER
1	A	154	MET
1	A	360	GLU
1	A	383	ASN

5.3.2 Protein sidechains ⓘ

In the following table, the Percentiles column shows the percent sidechain outliers of the chain as a percentile score with respect to all X-ray entries followed by that with respect to entries of similar resolution.

The Analysed column shows the number of residues for which the sidechain conformation was analysed, and the total number of residues.

Mol	Chain	Analysed	Rotameric	Outliers	Percentiles
1	A	343/367 (94%)	328 (96%)	15 (4%)	35 60

All (15) residues with a non-rotameric sidechain are listed below:

Mol	Chain	Res	Type
1	A	206	LYS
1	A	215	LEU
1	A	249	THR
1	A	266	ARG
1	A	315	THR
1	A	342	LEU
1	A	343	VAL
1	A	350	LYS
1	A	363	GLU
1	A	370	PHE
1	A	376	LEU
1	A	404	THR
1	A	413	ARG
1	A	438	LEU
1	A	476	LYS

Some sidechains can be flipped to improve hydrogen bonding and reduce clashes. All (6) such sidechains are listed below:

Mol	Chain	Res	Type
1	A	165	HIS
1	A	205	GLN
1	A	388	ASN
1	A	439	HIS
1	A	458	HIS
1	A	477	ASN

5.3.3 RNA ⓘ

There are no RNA molecules in this entry.

5.4 Non-standard residues in protein, DNA, RNA chains ⓘ

There are no non-standard protein/DNA/RNA residues in this entry.

5.5 Carbohydrates ⓘ

There are no carbohydrates in this entry.

5.6 Ligand geometry ⓘ

2 ligands are modelled in this entry.

In the following table, the Counts columns list the number of bonds (or angles) for which Mogul statistics could be retrieved, the number of bonds (or angles) that are observed in the model and the number of bonds (or angles) that are defined in the chemical component dictionary. The Link column lists molecule types, if any, to which the group is linked. The Z score for a bond length (or angle) is the number of standard deviations the observed value is removed from the expected value. A bond length (or angle) with $|Z| > 2$ is considered an outlier worth inspection. RMSZ is the root-mean-square of all Z scores of the bond lengths (or angles).

Mol	Type	Chain	Res	Link	Bond lengths			Bond angles		
					Counts	RMSZ	# $ Z > 2$	Counts	RMSZ	# $ Z > 2$
2	P3U	A	1493	-	36,38,38	2.97	7 (19%)	46,56,56	2.35	11 (23%)
3	MYA	A	1494	-	53,65,65	0.91	2 (3%)	64,91,91	2.06	8 (12%)

In the following table, the Chirals column lists the number of chiral outliers, the number of chiral centers analysed, the number of these observed in the model and the number defined in the chemical component dictionary. Similar counts are reported in the Torsion and Rings columns. '-' means no outliers of that kind were identified.

Mol	Type	Chain	Res	Link	Chirals	Torsions	Rings
2	P3U	A	1493	-	-	0/19/31/31	0/4/4/4
3	MYA	A	1494	-	-	0/59/80/80	0/3/3/3

All (9) bond length outliers are listed below:

Mol	Chain	Res	Type	Atoms	Z	Observed(Å)	Ideal(Å)
2	A	1493	P3U	NAT-NBH	-13.12	1.24	1.37

Continued on next page...

Continued from previous page...

Mol	Chain	Res	Type	Atoms	Z	Observed(Å)	Ideal(Å)
2	A	1493	P3U	CBD-NAV	-4.46	1.34	1.44
3	A	1494	MYA	C2-S1	-3.40	1.76	1.81
2	A	1493	P3U	CAZ-CAY	-3.27	1.40	1.49
2	A	1493	P3U	CBA-NBH	-2.74	1.33	1.37
2	A	1493	P3U	CBB-NBG	2.09	1.42	1.37
3	A	1494	MYA	P3X-O9A	3.41	1.61	1.50
2	A	1493	P3U	OAF-SBI	6.26	1.50	1.43
2	A	1493	P3U	OAE-SBI	6.70	1.50	1.43

All (19) bond angle outliers are listed below:

Mol	Chain	Res	Type	Atoms	Z	Observed(°)	Ideal(°)
3	A	1494	MYA	N3A-C2A-N1A	-10.13	120.91	128.87
2	A	1493	P3U	OAF-SBI-OAE	-7.83	109.16	119.54
2	A	1493	P3U	CAW-CBE-SBI	-5.21	120.12	123.26
2	A	1493	P3U	CAX-CBE-SBI	-4.14	120.76	123.26
2	A	1493	P3U	CAP-NBG-CBB	-3.65	112.01	120.45
3	A	1494	MYA	C2-C3-N4	-3.24	105.92	112.43
2	A	1493	P3U	CAQ-NBG-CBB	-3.05	113.38	120.45
2	A	1493	P3U	CAD-NBH-CBA	-2.67	125.22	129.03
2	A	1493	P3U	CAJ-CAI-NAS	-2.45	121.00	123.88
2	A	1493	P3U	CAR-CBC-CBD	-2.22	127.96	130.95
3	A	1494	MYA	C6-C7-N8	-2.10	107.24	111.94
3	A	1494	MYA	C3X-C2X-C1X	2.10	104.64	100.06
3	A	1494	MYA	C7-N8-C9	3.17	128.98	122.62
2	A	1493	P3U	CAD-NBH-NAT	3.27	123.66	118.04
3	A	1494	MYA	C3-N4-C5	3.35	129.44	122.79
2	A	1493	P3U	CAI-NAS-CBB	4.05	121.97	116.89
3	A	1494	MYA	O2M-C2M-C3M	6.11	120.33	109.26
2	A	1493	P3U	CBC-NAT-NBH	7.37	110.78	104.42
3	A	1494	MYA	C2-S1-C2M	7.42	110.69	100.70

There are no chirality outliers.

There are no torsion outliers.

There are no ring outliers.

2 monomers are involved in 6 short contacts:

Mol	Chain	Res	Type	Clashes	Symm-Clashes
2	A	1493	P3U	5	0
3	A	1494	MYA	1	0

5.7 Other polymers

There are no such residues in this entry.

5.8 Polymer linkage issues

There are no chain breaks in this entry.

6 Fit of model and data [i](#)

6.1 Protein, DNA and RNA chains [i](#)

In the following table, the column labelled ‘#RSRZ> 2’ contains the number (and percentage) of RSRZ outliers, followed by percent RSRZ outliers for the chain as percentile scores relative to all X-ray entries and entries of similar resolution. The OWAB column contains the minimum, median, 95th percentile and maximum values of the occupancy-weighted average B-factor per residue. The column labelled ‘Q< 0.9’ lists the number of (and percentage) of residues with an average occupancy less than 0.9.

Mol	Chain	Analysed	<RSRZ>	#RSRZ>2	OWAB(Å ²)	Q<0.9
1	A	390/411 (94%)	-0.10	5 (1%) 79 82	11, 21, 40, 51	0

All (5) RSRZ outliers are listed below:

Mol	Chain	Res	Type	RSRZ
1	A	282	PRO	3.8
1	A	407	MET	3.4
1	A	283	ALA	3.0
1	A	365	HIS	2.7
1	A	359	VAL	2.2

6.2 Non-standard residues in protein, DNA, RNA chains [i](#)

There are no non-standard protein/DNA/RNA residues in this entry.

6.3 Carbohydrates [i](#)

There are no carbohydrates in this entry.

6.4 Ligands [i](#)

In the following table, the Atoms column lists the number of modelled atoms in the group and the number defined in the chemical component dictionary. LLDF column lists the quality of electron density of the group with respect to its neighbouring residues in protein, DNA or RNA chains. The B-factors column lists the minimum, median, 95th percentile and maximum values of B factors of atoms in the group. The column labelled ‘Q< 0.9’ lists the number of atoms with occupancy less than 0.9.

Mol	Type	Chain	Res	Atoms	RSCC	RSR	LLDF	B-factors(Å ²)	Q<0.9
2	P3U	A	1493	35/35	0.92	0.18	1.01	20,22,24,24	0

Continued on next page...

Continued from previous page...

Mol	Type	Chain	Res	Atoms	RSCC	RSR	LLDF	B-factors(\AA^2)	Q<0.9
3	MYA	A	1494	63/63	0.94	0.14	-0.36	9,14,23,24	0

6.5 Other polymers [i](#)

There are no such residues in this entry.