



Full wwPDB X-ray Structure Validation Report ⓘ

Jan 31, 2016 – 06:46 PM GMT

PDB ID : 1CF8
Title : Convergence of catalytic antibody and terpene cyclase mechanisms: polyene cyclization directed by carbocation-pi interactions
Authors : Paschall, C.M.; Hasserodt, J.; Jones, T.; Lerner, R.A.; Janda, K.D.; Christianson, D.W.
Deposited on : 1999-03-24
Resolution : 2.70 Å(reported)

This is a Full wwPDB X-ray Structure Validation Report for a publicly released PDB entry.
We welcome your comments at validation@mail.wwpdb.org
A user guide is available at
<http://wwpdb.org/validation/2016/XrayValidationReportHelp>
with specific help available everywhere you see the ⓘ symbol.

The following versions of software and data (see [references ⓘ](#)) were used in the production of this report:

MolProbity : 4.02b-467
Mogul : 1.7 (RC4), CSD as536be (2015)
Xtriage (Phenix) : **NOT EXECUTED**
EDS : **NOT EXECUTED**
Percentile statistics : 20151230.v01 (using entries in the PDB archive December 30th 2015)
Ideal geometry (proteins) : Engh & Huber (2001)
Ideal geometry (DNA, RNA) : Parkinson et al. (1996)
Validation Pipeline (wwPDB-VP) : trunk26865

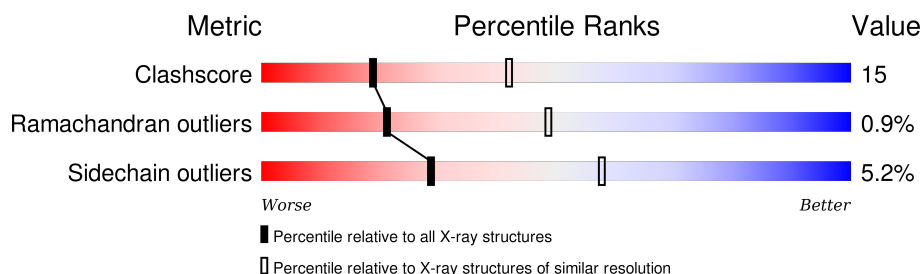
1 Overall quality at a glance

The following experimental techniques were used to determine the structure:

X-RAY DIFFRACTION

The reported resolution of this entry is 2.70 Å.

Percentile scores (ranging between 0-100) for global validation metrics of the entry are shown in the following graphic. The table shows the number of entries on which the scores are based.



Metric	Whole archive (#Entries)	Similar resolution (#Entries, resolution range(Å))
Clashscore	102246	2422 (2.70-2.70)
Ramachandran outliers	100387	2382 (2.70-2.70)
Sidechain outliers	100360	2382 (2.70-2.70)

The table below summarises the geometric issues observed across the polymeric chains and their fit to the electron density. The red, orange, yellow and green segments on the lower bar indicate the fraction of residues that contain outliers for ≥ 3 , 2, 1 and 0 types of geometric quality criteria. A grey segment represents the fraction of residues that are not modelled. The numeric value for each fraction is indicated below the corresponding segment, with a dot representing fractions $\leq 5\%$. The upper red bar (where present) indicates the fraction of residues that have poor fit to the electron density. The numeric value is given above the bar.

Note EDS was not executed.

Mol	Chain	Length	Quality of chain
1	L	215	
2	H	218	

The following table lists non-polymeric compounds, carbohydrate monomers and non-standard residues in protein, DNA, RNA chains that are outliers for geometric or electron-density-fit criteria:

Mol	Type	Chain	Res	Chirality	Geometry	Clashes	Electron density
4	HAZ	H	800	X	-	-	-

2 Entry composition

There are 5 unique types of molecules in this entry. The entry contains 3348 atoms, of which 0 are hydrogens and 0 are deuteriums.

In the tables below, the ZeroOcc column contains the number of atoms modelled with zero occupancy, the AltConf column contains the number of residues with at least one atom in alternate conformation and the Trace column contains the number of residues modelled with at most 2 atoms.

- Molecule 1 is a protein called PROTEIN (CATALYTIC ANTIBODY 19A4 (LIGHT CHAIN)).

Mol	Chain	Residues	Atoms					ZeroOcc	AltConf	Trace
1	L	215	Total	C	N	O	S	0	0	0
			1650	1032	268	342	8			

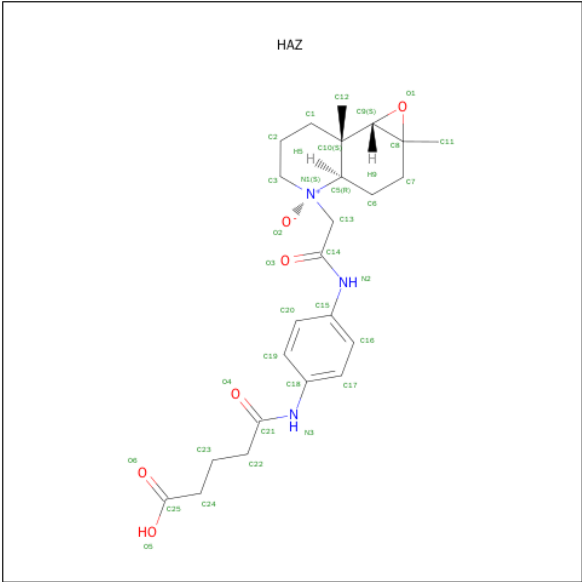
- Molecule 2 is a protein called PROTEIN (CATALYTIC ANTIBODY 19A4 (HEAVY CHAIN)).

Mol	Chain	Residues	Atoms					ZeroOcc	AltConf	Trace
2	H	218	Total	C	N	O	S	0	0	0
			1652	1041	268	335	8			

- Molecule 3 is CADMIUM ION (three-letter code: CD) (formula: Cd).

Mol	Chain	Residues	Atoms		ZeroOcc	AltConf
3	H	1	Total	Cd	0	0
			1	1		
3	L	1	Total	Cd	0	0
			1	1		

- Molecule 4 is 4-{4-[2-(1A,7A-DIMETHYL-4-OXY-OCTAHYDRO-1-OXA-4-AZA-CYCLO PROPA[A]NAPHTHALEN-4-YL) -ACETYLAMINO]-PHENYLCARBAMOYL}-BUTYRIC ACID (three-letter code: HAZ) (formula: C₂₄H₃₃N₃O₆).



Mol	Chain	Residues	Atoms				ZeroOcc	AltConf
4	H	1	Total	C	N	O	0	0
			33	24	3	6		

- Molecule 5 is water.

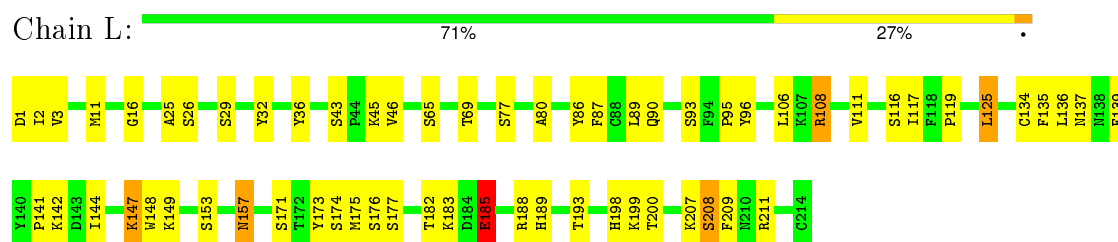
Mol	Chain	Residues	Atoms		ZeroOcc	AltConf
5	H	7	Total	O	0	0
			7	7		
5	L	4	Total	O	0	0
			4	4		

3 Residue-property plots

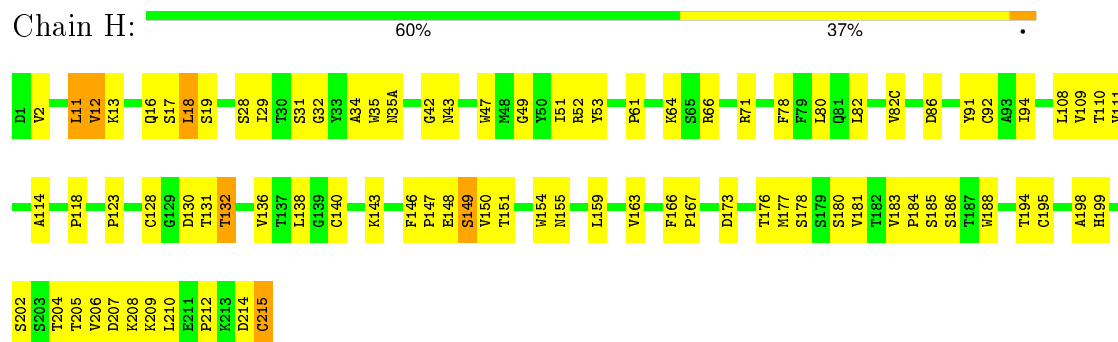
These plots are drawn for all protein, RNA and DNA chains in the entry. The first graphic for a chain summarises the proportions of errors displayed in the second graphic. The second graphic shows the sequence view annotated by issues in geometry and electron density. Residues are color-coded according to the number of geometric quality criteria for which they contain at least one outlier: green = 0, yellow = 1, orange = 2 and red = 3 or more. A red dot above a residue indicates a poor fit to the electron density ($RSRZ > 2$). Stretches of 2 or more consecutive residues without any outlier are shown as a green connector. Residues present in the sample, but not in the model, are shown in grey.

Note EDS was not executed.

• Molecule 1: PROTEIN (CATALYTIC ANTIBODY 19A4 (LIGHT CHAIN))



• Molecule 2: PROTEIN (CATALYTIC ANTIBODY 19A4 (HEAVY CHAIN))



4 Data and refinement statistics

Xtriage (Phenix) and EDS were not executed - this section will therefore be incomplete.

Property	Value	Source
Space group	C 1 2 1	Depositor
Cell constants a, b, c, α , β , γ	101.30 Å 70.30 Å 69.60 Å 90.00° 114.20° 90.00°	Depositor
Resolution (Å)	20.00 – 2.70	Depositor
% Data completeness (in resolution range)	93.5 (20.00-2.70)	Depositor
R_{merge}	0.09	Depositor
R_{sym}	(Not available)	Depositor
Refinement program	X-PLOR 3.1	Depositor
R, R_{free}	0.165 , 0.257	Depositor
Estimated twinning fraction	No twinning to report.	Xtriage
Total number of atoms	3348	wwPDB-VP
Average B, all atoms (Å ²)	25.0	wwPDB-VP

5 Model quality

5.1 Standard geometry

Bond lengths and bond angles in the following residue types are not validated in this section: HAZ, CD

The Z score for a bond length (or angle) is the number of standard deviations the observed value is removed from the expected value. A bond length (or angle) with $|Z| > 5$ is considered an outlier worth inspection. RMSZ is the root-mean-square of all Z scores of the bond lengths (or angles).

Mol	Chain	Bond lengths		Bond angles	
		RMSZ	$\# Z > 5$	RMSZ	$\# Z > 5$
1	L	0.47	1/1691 (0.1%)	0.69	0/2300
2	H	0.44	0/1696	0.75	0/2322
All	All	0.46	1/3387 (0.0%)	0.72	0/4622

All (1) bond length outliers are listed below:

Mol	Chain	Res	Type	Atoms	Z	Observed(Å)	Ideal(Å)
1	L	185	GLU	CB-CG	5.22	1.62	1.52

There are no bond angle outliers.

There are no chirality outliers.

There are no planarity outliers.

5.2 Too-close contacts

In the following table, the Non-H and H(model) columns list the number of non-hydrogen atoms and hydrogen atoms in the chain respectively. The H(added) column lists the number of hydrogen atoms added and optimized by MolProbity. The Clashes column lists the number of clashes within the asymmetric unit, whereas Symm-Clashes lists symmetry related clashes.

Mol	Chain	Non-H	H(model)	H(added)	Clashes	Symm-Clashes
1	L	1650	0	1569	47	0
2	H	1652	0	1593	55	0
3	H	1	0	0	0	0
3	L	1	0	0	0	0
4	H	33	0	30	3	0
5	H	7	0	0	0	0
5	L	4	0	0	0	0
All	All	3348	0	3192	100	0

The all-atom clashscore is defined as the number of clashes found per 1000 atoms (including hydrogen atoms). The all-atom clashscore for this structure is 15.

All (100) close contacts within the same asymmetric unit are listed below, sorted by their clash magnitude.

Atom-1	Atom-2	Interatomic distance (Å)	Clash overlap (Å)
1:L:149:LYS:HB2	1:L:193:THR:HB	1.54	0.90
1:L:185:GLU:HG2	1:L:188:ARG:NH1	1.92	0.84
2:H:138:LEU:HB3	2:H:210:LEU:HD13	1.59	0.83
1:L:185:GLU:HG2	1:L:188:ARG:HH11	1.44	0.81
1:L:175:MET:HG2	1:L:176:SER:H	1.50	0.76
2:H:18:LEU:HD22	2:H:109:VAL:HG11	1.69	0.72
2:H:151:THR:HG22	2:H:198:ALA:HB3	1.71	0.72
1:L:193:THR:HA	1:L:208:SER:HB3	1.78	0.65
2:H:128:CYS:HA	2:H:214:ASP:HB3	1.81	0.62
1:L:80:ALA:HA	1:L:106:LEU:HG	1.81	0.62
2:H:143:LYS:HG3	2:H:176:THR:HG23	1.82	0.60
2:H:194:THR:HA	2:H:209:LYS:HA	1.83	0.60
2:H:18:LEU:HD12	2:H:18:LEU:O	2.01	0.60
2:H:177:MET:HG2	2:H:178:SER:N	2.17	0.59
2:H:148:GLU:O	2:H:149:SER:HB2	2.04	0.57
1:L:175:MET:HG2	1:L:176:SER:N	2.20	0.54
1:L:188:ARG:HG2	1:L:188:ARG:O	2.08	0.54
2:H:147:PRO:O	2:H:199:HIS:HE1	1.91	0.54
1:L:2:ILE:HG21	1:L:25:ALA:HB1	1.90	0.53
1:L:116:SER:O	1:L:134:CYS:HA	2.07	0.53
1:L:89:LEU:HG	1:L:90:GLN:N	2.24	0.53
2:H:19:SER:HA	2:H:80:LEU:O	2.09	0.52
1:L:3:VAL:HB	1:L:26:SER:OG	2.10	0.52
2:H:140:CYS:HB2	2:H:154:TRP:CH2	2.45	0.52
1:L:1:ASP:HB2	1:L:95:PRO:HD2	1.91	0.52
2:H:163:VAL:HG12	2:H:181:VAL:HG23	1.93	0.51
1:L:148:TRP:HE1	1:L:177:SER:HB3	1.76	0.51
2:H:18:LEU:HD12	2:H:18:LEU:C	2.32	0.50
4:H:800:HAZ:O3	4:H:800:HAZ:H20	2.11	0.50
1:L:185:GLU:CD	1:L:189:HIS:HE2	2.14	0.50
2:H:118:PRO:HG3	2:H:202:SER:HB2	1.93	0.50
2:H:130:ASP:O	2:H:131:THR:HB	2.12	0.50
2:H:123:PRO:HD3	2:H:208:LYS:HG2	1.94	0.49
1:L:149:LYS:HA	1:L:153:SER:O	2.12	0.49
1:L:135:PHE:CD2	2:H:180:SER:HB3	2.48	0.49
2:H:35(A):ASN:O	2:H:92:CYS:HA	2.13	0.48
2:H:35:TRP:HB3	2:H:78:PHE:CZ	2.48	0.48

Continued on next page...

Continued from previous page...

Atom-1	Atom-2	Interatomic distance (Å)	Clash overlap (Å)
2:H:16:GLN:O	2:H:82(C):VAL:HG22	2.13	0.48
2:H:71:ARG:HA	2:H:78:PHE:HA	1.95	0.48
2:H:28:SER:HB2	2:H:31:SER:OG	2.13	0.48
2:H:35:TRP:HB2	2:H:51:ILE:HG23	1.95	0.48
2:H:47:TRP:CZ2	2:H:49:GLY:HA2	2.49	0.48
1:L:144:ILE:HG23	1:L:175:MET:CE	2.44	0.47
1:L:189:HIS:O	1:L:211:ARG:HD3	2.14	0.47
1:L:108:ARG:HG2	1:L:171:SER:CB	2.45	0.47
2:H:34:ALA:O	2:H:94:ILE:HG22	2.15	0.47
1:L:45:LYS:HD3	1:L:46:VAL:N	2.30	0.47
2:H:118:PRO:HB3	2:H:204:THR:HG21	1.96	0.46
2:H:11:LEU:HD23	2:H:110:THR:HB	1.98	0.46
1:L:147:LYS:NZ	1:L:147:LYS:HB2	2.31	0.46
1:L:135:PHE:CE2	2:H:180:SER:HB3	2.51	0.46
4:H:800:HAZ:O4	4:H:800:HAZ:H17	2.16	0.45
2:H:17:SER:HA	2:H:82:LEU:O	2.16	0.45
2:H:29:ILE:HA	2:H:35:TRP:CZ2	2.51	0.45
2:H:199:HIS:HD2	2:H:202:SER:OG	2.00	0.45
2:H:205:THR:O	2:H:205:THR:HG23	2.16	0.45
2:H:12:VAL:O	2:H:111:VAL:HA	2.16	0.44
2:H:195:CYS:O	2:H:207:ASP:HA	2.17	0.44
2:H:66:ARG:HH22	2:H:86:ASP:CG	2.20	0.44
2:H:42:GLY:O	2:H:43:ASN:HB2	2.18	0.44
2:H:114:ALA:HB3	2:H:146:PHE:CE1	2.53	0.44
2:H:52:ARG:HG2	2:H:53:TYR:CD2	2.53	0.44
1:L:95:PRO:HB3	2:H:61:PRO:HD2	1.99	0.43
1:L:141:PRO:HG2	1:L:199:LYS:CE	2.49	0.43
2:H:136:VAL:HG23	2:H:185:SER:HA	2.00	0.43
1:L:29:SER:HB3	1:L:32:TYR:HD2	1.83	0.43
1:L:141:PRO:HG2	1:L:199:LYS:HE3	2.00	0.43
1:L:119:PRO:HB3	1:L:209:PHE:CE1	2.53	0.43
1:L:2:ILE:HD13	1:L:93:SER:HB2	1.99	0.43
2:H:130:ASP:C	2:H:132:THR:H	2.21	0.43
1:L:111:VAL:HG13	1:L:139:PHE:HA	2.00	0.43
1:L:142:LYS:HB3	1:L:173:TYR:CE2	2.54	0.43
1:L:16:GLY:HA2	1:L:77:SER:OG	2.19	0.43
1:L:117:ILE:HG22	1:L:207:LYS:HG3	2.00	0.42
2:H:155:ASN:ND2	2:H:194:THR:H	2.18	0.42
1:L:125:LEU:O	1:L:183:LYS:HD3	2.19	0.42
1:L:25:ALA:O	1:L:69:THR:HG23	2.19	0.42
2:H:13:LYS:O	2:H:16:GLN:HB2	2.19	0.42

Continued on next page...

Continued from previous page...

Atom-1	Atom-2	Interatomic distance (Å)	Clash overlap (Å)
2:H:183:VAL:HB	2:H:184:PRO:HD2	2.01	0.42
1:L:142:LYS:HB2	1:L:142:LYS:HE3	1.83	0.42
1:L:137:ASN:HD22	1:L:174:SER:HB3	1.85	0.42
2:H:11:LEU:HA	2:H:110:THR:O	2.19	0.42
1:L:136:LEU:N	1:L:136:LEU:HD12	2.35	0.41
2:H:123:PRO:CB	2:H:210:LEU:HD23	2.50	0.41
1:L:2:ILE:HG23	1:L:26:SER:H	1.85	0.41
1:L:43:SER:HB3	2:H:91:TYR:CE2	2.55	0.41
2:H:166:PHE:HA	2:H:167:PRO:HD3	1.94	0.41
2:H:32:GLY:O	2:H:53:TYR:HB3	2.21	0.41
1:L:157:ASN:HA	1:L:157:ASN:HD22	1.63	0.41
2:H:148:GLU:HG3	2:H:149:SER:N	2.35	0.41
1:L:108:ARG:HG2	1:L:171:SER:HB3	2.03	0.41
1:L:36:TYR:O	1:L:86:TYR:HA	2.21	0.40
2:H:138:LEU:HD22	2:H:138:LEU:N	2.36	0.40
2:H:214:ASP:CG	2:H:215:CYS:H	2.24	0.40
1:L:108:ARG:HG2	1:L:171:SER:HB2	2.03	0.40
2:H:148:GLU:O	2:H:149:SER:CB	2.68	0.40
1:L:36:TYR:N	1:L:87:PHE:O	2.47	0.40
1:L:96:TYR:CD2	4:H:800:HAZ:H21	2.57	0.40
1:L:141:PRO:O	1:L:198:HIS:HE1	2.05	0.40
2:H:188:TRP:CH2	2:H:212:PRO:HB3	2.57	0.40

There are no symmetry-related clashes.

5.3 Torsion angles [i](#)

5.3.1 Protein backbone [i](#)

In the following table, the Percentiles column shows the percent Ramachandran outliers of the chain as a percentile score with respect to all X-ray entries followed by that with respect to entries of similar resolution.

The Analysed column shows the number of residues for which the backbone conformation was analysed, and the total number of residues.

Mol	Chain	Analysed	Favoured	Allowed	Outliers	Percentiles	
1	L	213/215 (99%)	204 (96%)	8 (4%)	1 (0%)	34	63
2	H	216/218 (99%)	199 (92%)	14 (6%)	3 (1%)	14	35
All	All	429/433 (99%)	403 (94%)	22 (5%)	4 (1%)	21	49

All (4) Ramachandran outliers are listed below:

Mol	Chain	Res	Type
1	L	200	THR
2	H	64	LYS
2	H	149	SER
2	H	2	VAL

5.3.2 Protein sidechains ⓘ

In the following table, the Percentiles column shows the percent sidechain outliers of the chain as a percentile score with respect to all X-ray entries followed by that with respect to entries of similar resolution.

The Analysed column shows the number of residues for which the sidechain conformation was analysed, and the total number of residues.

Mol	Chain	Analysed	Rotameric	Outliers	Percentiles	
1	L	192/192 (100%)	183 (95%)	9 (5%)	32	63
2	H	191/191 (100%)	180 (94%)	11 (6%)	25	52
All	All	383/383 (100%)	363 (95%)	20 (5%)	29	58

All (20) residues with a non-rotameric sidechain are listed below:

Mol	Chain	Res	Type
1	L	11	MET
1	L	65	SER
1	L	108	ARG
1	L	125	LEU
1	L	147	LYS
1	L	157	ASN
1	L	182	THR
1	L	185	GLU
1	L	208	SER
2	H	11	LEU
2	H	12	VAL
2	H	18	LEU
2	H	108	LEU
2	H	132	THR
2	H	150	VAL
2	H	159	LEU
2	H	173	ASP
2	H	186	SER
2	H	206	VAL

Continued on next page...

Continued from previous page...

Mol	Chain	Res	Type
2	H	215	CYS

Some sidechains can be flipped to improve hydrogen bonding and reduce clashes. All (9) such sidechains are listed below:

Mol	Chain	Res	Type
1	L	38	GLN
1	L	137	ASN
1	L	138	ASN
1	L	157	ASN
1	L	198	HIS
1	L	210	ASN
2	H	39	GLN
2	H	155	ASN
2	H	199	HIS

5.3.3 RNA [i](#)

There are no RNA molecules in this entry.

5.4 Non-standard residues in protein, DNA, RNA chains [i](#)

There are no non-standard protein/DNA/RNA residues in this entry.

5.5 Carbohydrates [i](#)

There are no carbohydrates in this entry.

5.6 Ligand geometry [i](#)

Of 3 ligands modelled in this entry, 2 are monoatomic - leaving 1 for Mogul analysis.

In the following table, the Counts columns list the number of bonds (or angles) for which Mogul statistics could be retrieved, the number of bonds (or angles) that are observed in the model and the number of bonds (or angles) that are defined in the chemical component dictionary. The Link column lists molecule types, if any, to which the group is linked. The Z score for a bond length (or angle) is the number of standard deviations the observed value is removed from the expected value. A bond length (or angle) with $|Z| > 2$ is considered an outlier worth inspection. RMSZ is the root-mean-square of all Z scores of the bond lengths (or angles).

Mol	Type	Chain	Res	Link	Bond lengths			Bond angles		
					Counts	RMSZ	# Z > 2	Counts	RMSZ	# Z > 2
4	HAZ	H	800	-	32,36,36	4.33	10 (31%)	39,55,55	6.43	14 (35%)

In the following table, the Chirals column lists the number of chiral outliers, the number of chiral centers analysed, the number of these observed in the model and the number defined in the chemical component dictionary. Similar counts are reported in the Torsion and Rings columns. '-' means no outliers of that kind were identified.

Mol	Type	Chain	Res	Link	Chirals	Torsions	Rings
4	HAZ	H	800	-	1/1/8/10	0/16/59/59	0/3/4/4

All (10) bond length outliers are listed below:

Mol	Chain	Res	Type	Atoms	Z	Observed(Å)	Ideal(Å)
4	H	800	HAZ	O1-C9	-12.88	1.26	1.44
4	H	800	HAZ	C18-N3	-6.86	1.28	1.41
4	H	800	HAZ	C15-N2	-6.26	1.29	1.41
4	H	800	HAZ	O2-N1	-3.62	1.36	1.40
4	H	800	HAZ	C8-C9	-3.46	1.42	1.47
4	H	800	HAZ	C7-C8	2.01	1.56	1.52
4	H	800	HAZ	C17-C18	2.08	1.42	1.39
4	H	800	HAZ	C20-C15	2.27	1.42	1.39
4	H	800	HAZ	C10-C9	2.97	1.58	1.54
4	H	800	HAZ	O1-C8	16.94	1.71	1.46

All (14) bond angle outliers are listed below:

Mol	Chain	Res	Type	Atoms	Z	Observed(°)	Ideal(°)
4	H	800	HAZ	O1-C8-C9	-16.68	46.51	59.23
4	H	800	HAZ	C8-O1-C9	-7.77	54.69	60.87
4	H	800	HAZ	O1-C8-C11	-7.18	102.26	113.64
4	H	800	HAZ	C12-C10-C9	-3.02	103.68	109.88
4	H	800	HAZ	C11-C8-C9	-2.74	115.76	121.51
4	H	800	HAZ	O2-N1-C3	-2.01	104.76	109.03
4	H	800	HAZ	C18-N3-C21	2.06	131.38	127.47
4	H	800	HAZ	C15-N2-C14	2.25	131.74	127.47
4	H	800	HAZ	C3-N1-C13	2.77	114.58	109.71
4	H	800	HAZ	C13-N1-C5	3.06	115.96	110.23
4	H	800	HAZ	C12-C10-C1	3.75	114.51	108.20
4	H	800	HAZ	O1-C8-C7	7.81	119.94	113.94
4	H	800	HAZ	C11-C8-C7	12.96	124.94	116.43
4	H	800	HAZ	O1-C9-C8	30.26	78.80	59.68

All (1) chirality outliers are listed below:

Mol	Chain	Res	Type	Atom
4	H	800	HAZ	C8

There are no torsion outliers.

There are no ring outliers.

1 monomer is involved in 3 short contacts:

Mol	Chain	Res	Type	Clashes	Symm-Clashes
4	H	800	HAZ	3	0

5.7 Other polymers [i](#)

There are no such residues in this entry.

5.8 Polymer linkage issues [i](#)

There are no chain breaks in this entry.

6 Fit of model and data ⓘ

6.1 Protein, DNA and RNA chains ⓘ

EDS was not executed - this section will therefore be empty.

6.2 Non-standard residues in protein, DNA, RNA chains ⓘ

EDS was not executed - this section will therefore be empty.

6.3 Carbohydrates ⓘ

EDS was not executed - this section will therefore be empty.

6.4 Ligands ⓘ

EDS was not executed - this section will therefore be empty.

6.5 Other polymers ⓘ

EDS was not executed - this section will therefore be empty.